

# DFO Science Vessel Charters

Stock Assessment and Research

# Projects

- Stock Assessment Surveys
  - Single species stock assessment (lobster, snow crab, etc)
  - Multi-species surveys (ecosystem survey)
- Research Projects
  - Fish tagging
  - Acoustic receiver deployment / retrieval
  - Juvenile lobster collectors
  - Diving
  - ROV Deployment
- Transportation
  - Moving gear / equipment to remote working locations

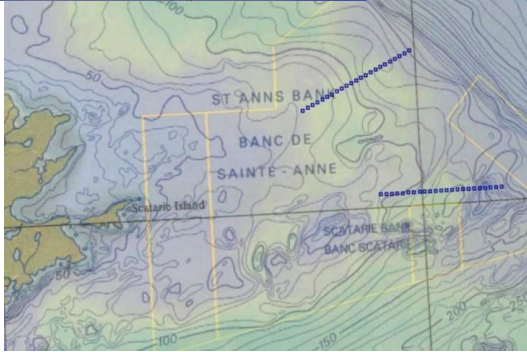
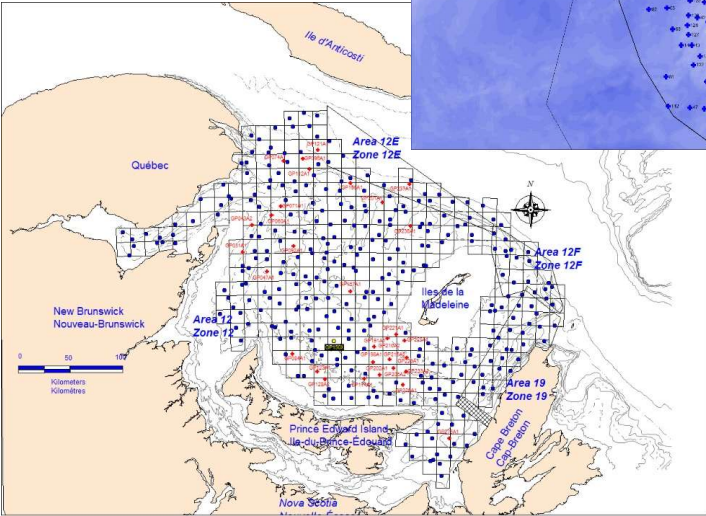
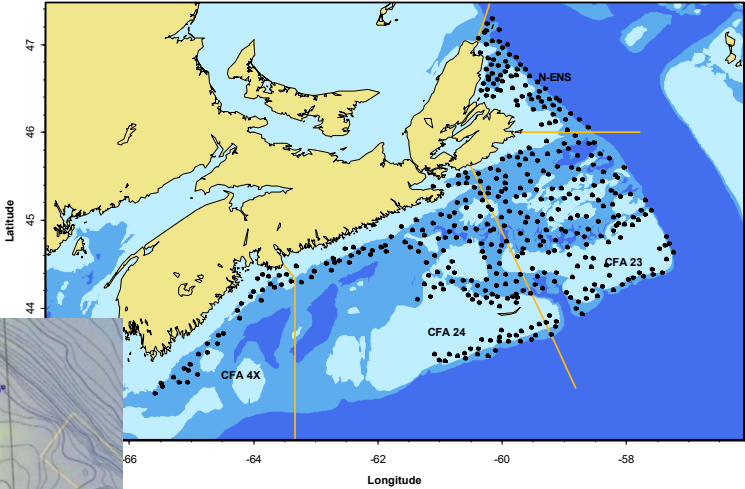
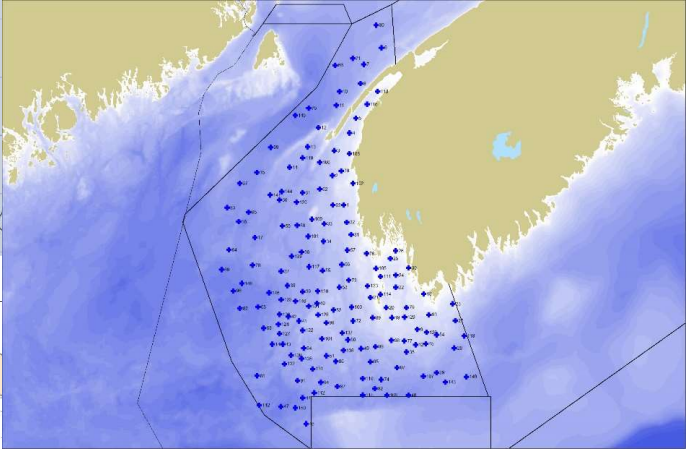
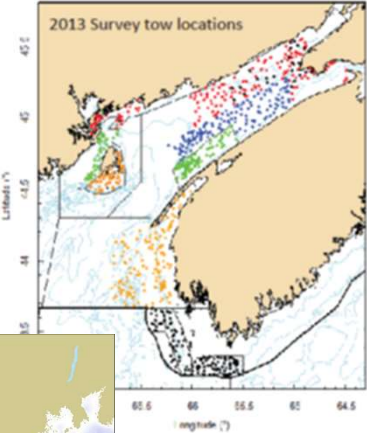
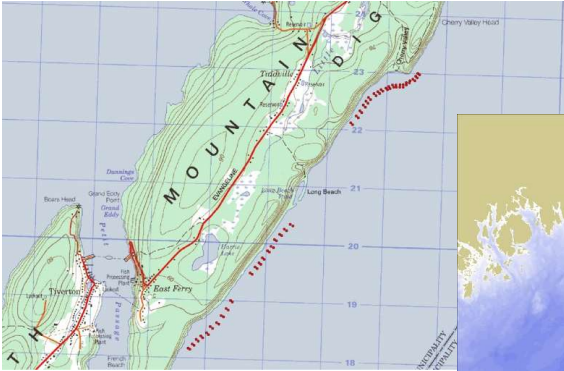
# Vessels Required

- Commercial fishing vessels
  - Draggers / trawlers
  - Scallop dragger
  - Longliners
  - Trap vessels (lobster / crab)
- Commercial Cargo Vessels
- Dive Tenders

# Area of Operation

- Stock Assessment Surveys (2-10 day trips)
  - Wide-scale offshore surveys
  - Near shore / mid-shore
- Research Projects (day trips or overnight)
  - Generally more focused areas of operation
    - St Anns Bank MPA
    - LFA 34 inshore
- Transportation (transit, unloading / loading)
  - Sable Island, etc

# Area of Operation



# Personnel Onboard

- Stock Assessment Surveys
  - 2-4 vessel personnel
  - 2-8 DFO science staff
- Research Projects (day trips or overnight)
  - 2-4 vessel personnel
  - 1-3 DFO science staff
- Transportation (transit, unloading / loading)
  - Variable crew compliment
  - Limited DFO staff

# Timing

- Stock Assessment Surveys
  - 1-4 month commitment
- Research Projects
  - Highly variable depending on project
  - 1 day up to 2-3 weeks
- Transportation (transit, unloading / loading)
  - 1 day- 2 weeks