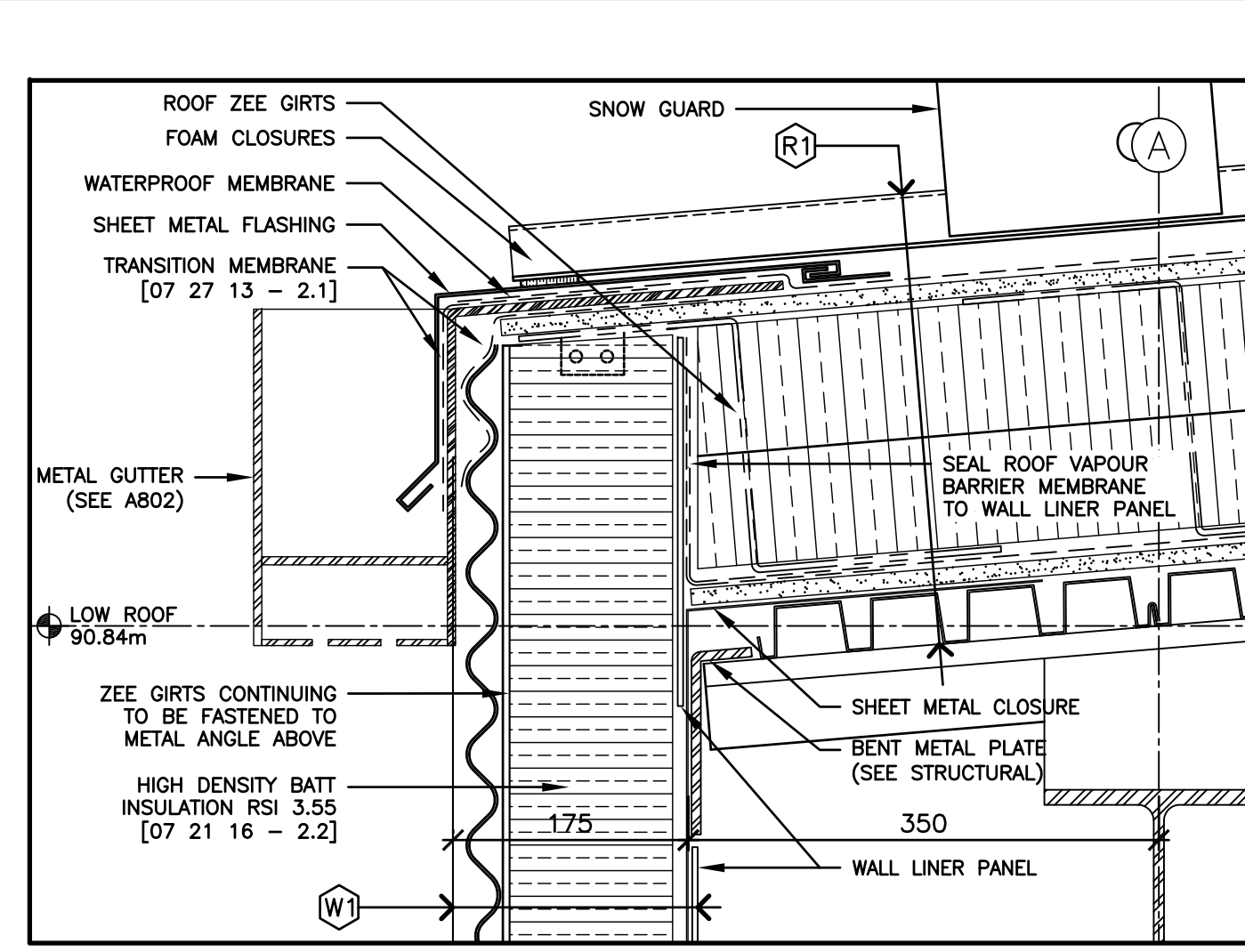
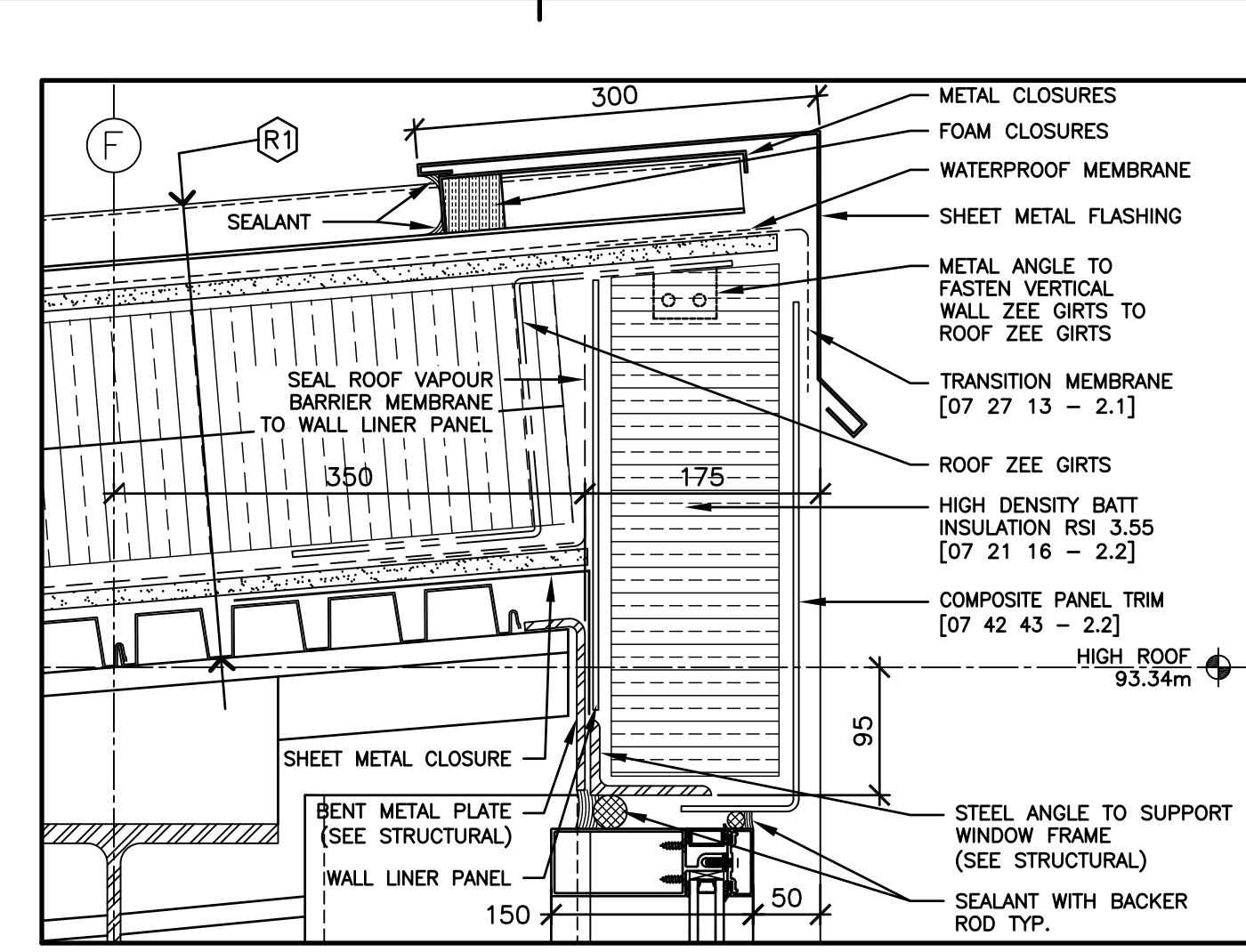


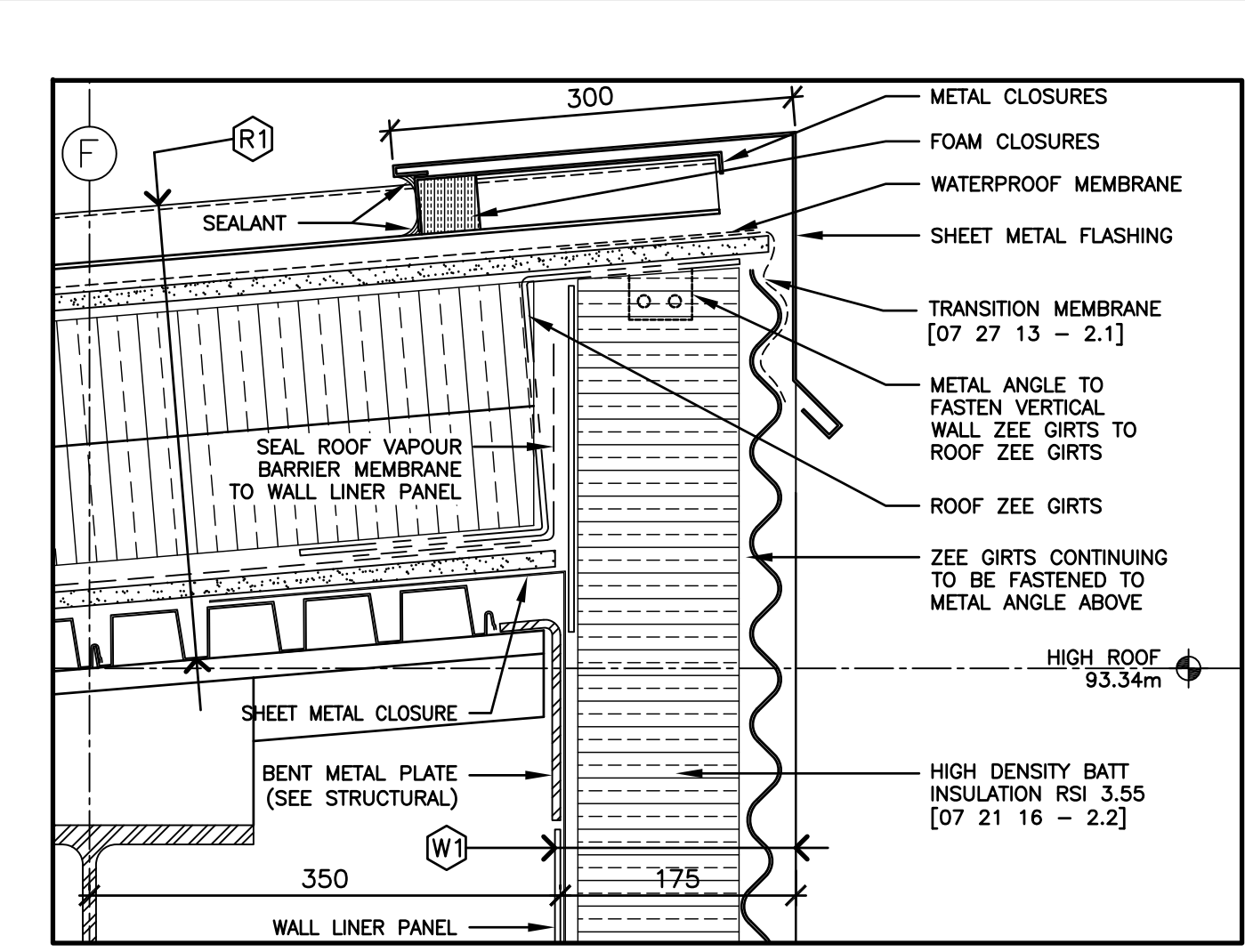
16 SECTION DETAIL
A600 SCALE: 1:5



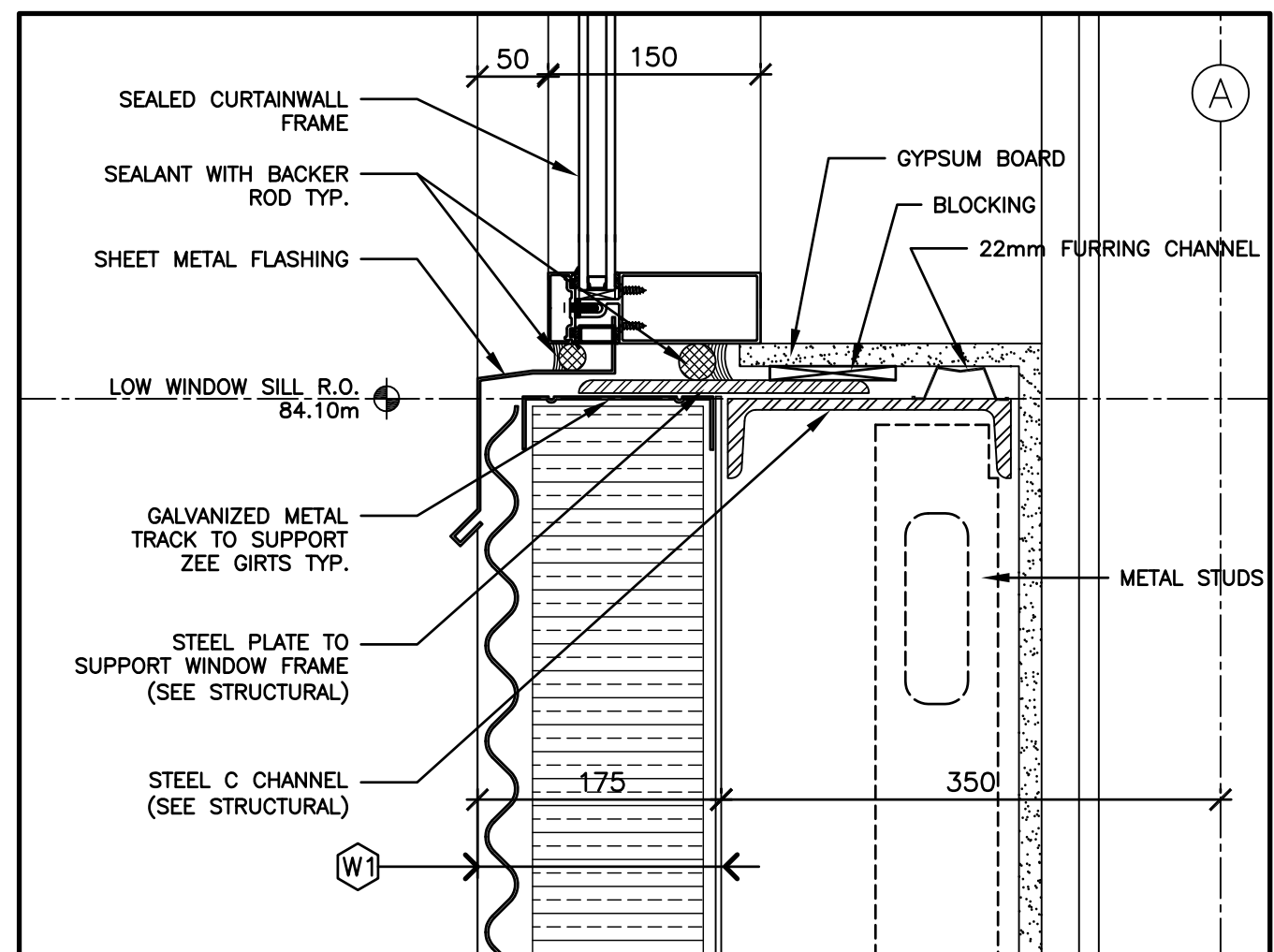
15 SECTION DETAIL
A600 SCALE: 1:5



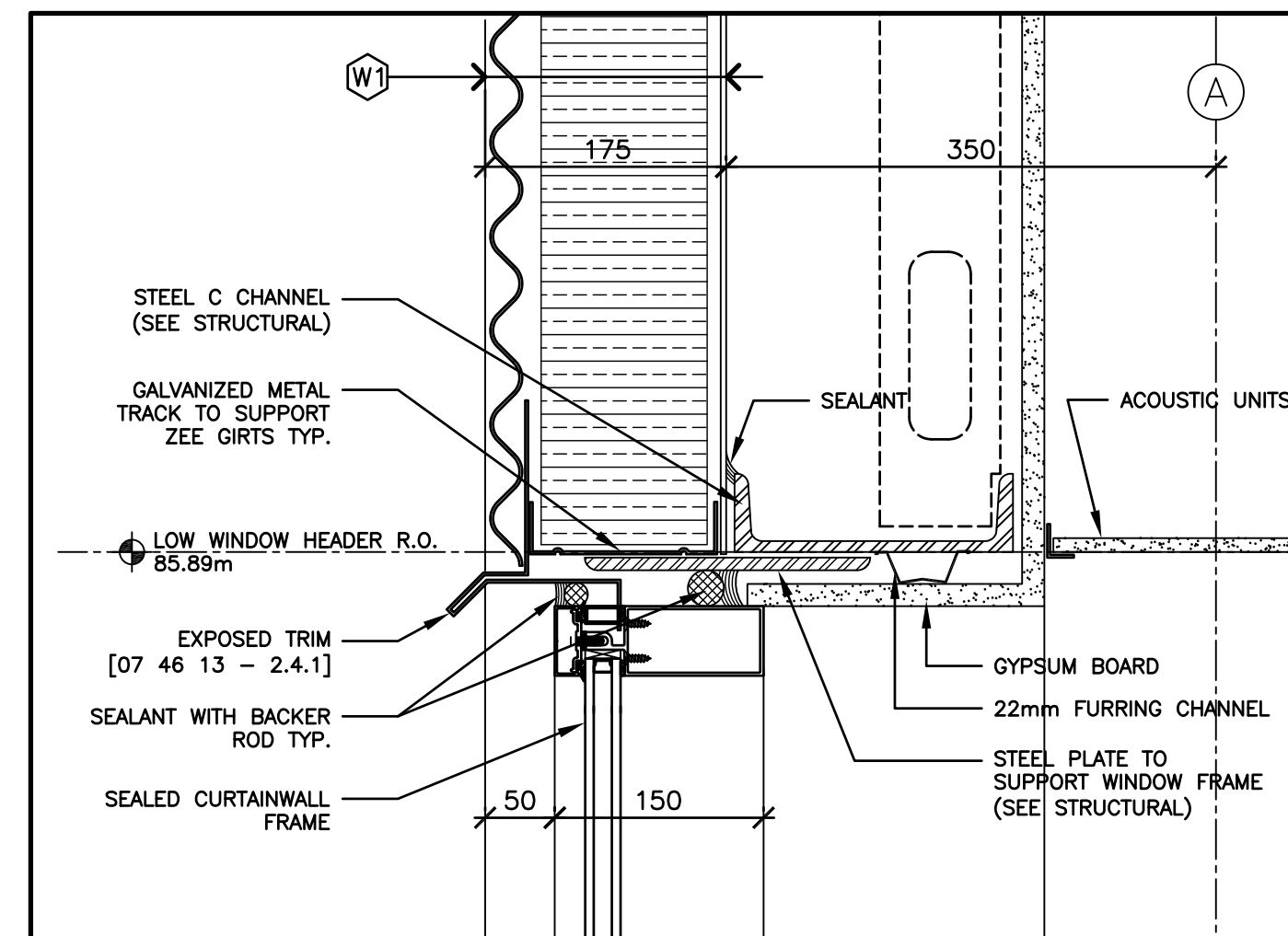
14 SECTION DETAIL
A600 SCALE: 1:5



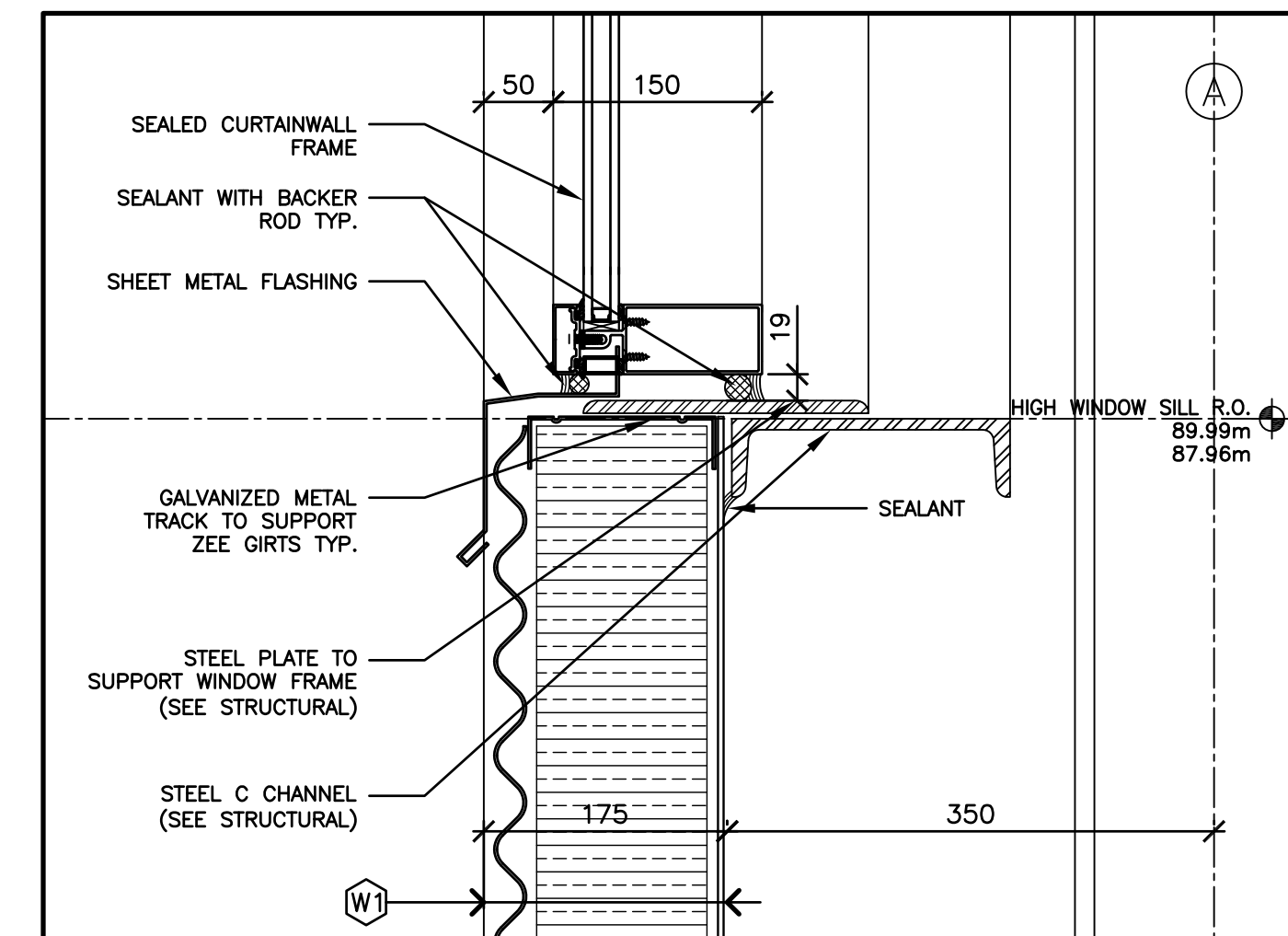
13 SECTION DETAIL
A600 SCALE: 1:5



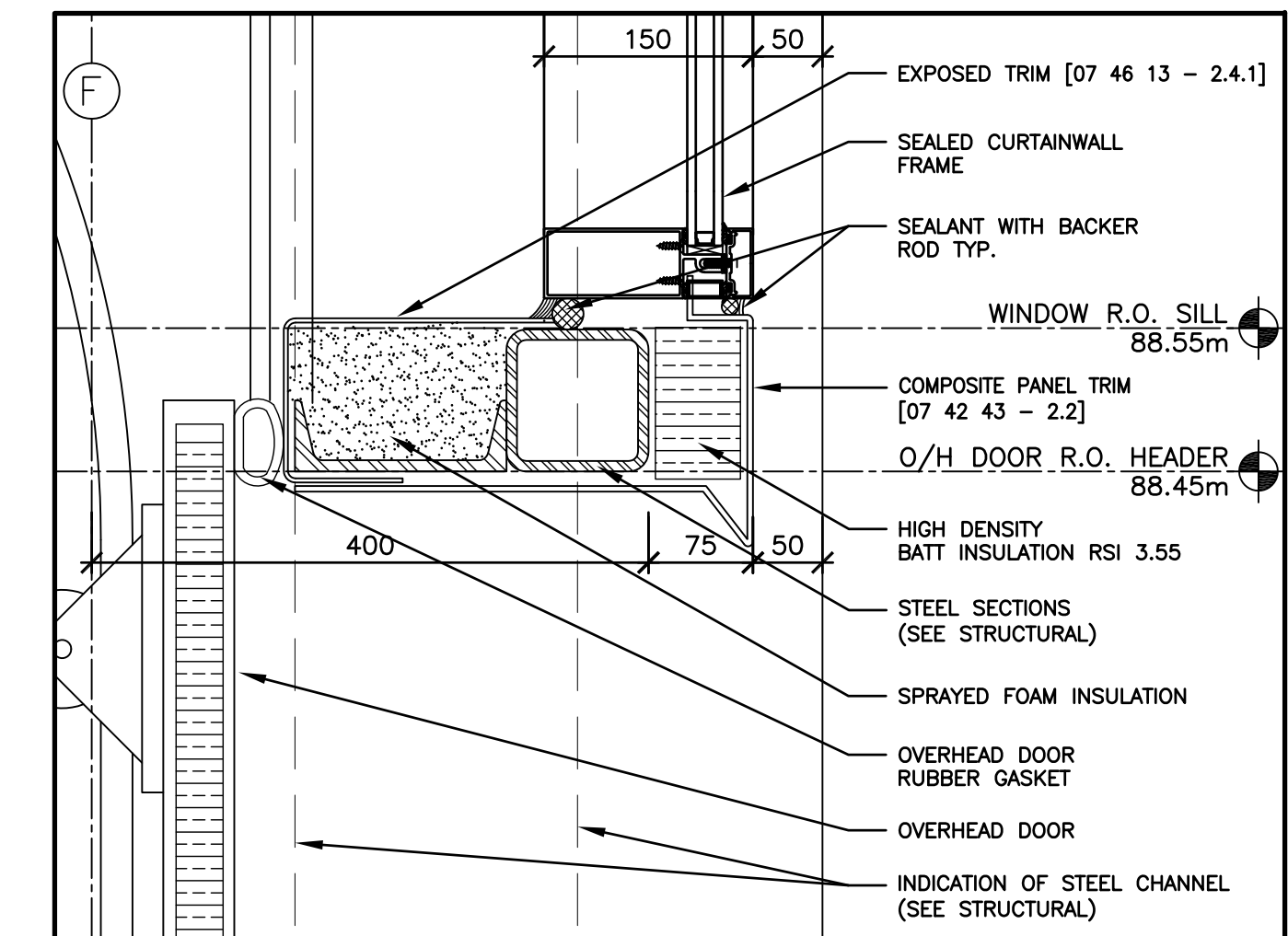
12 SECTION DETAIL
A600 SCALE: 1:5



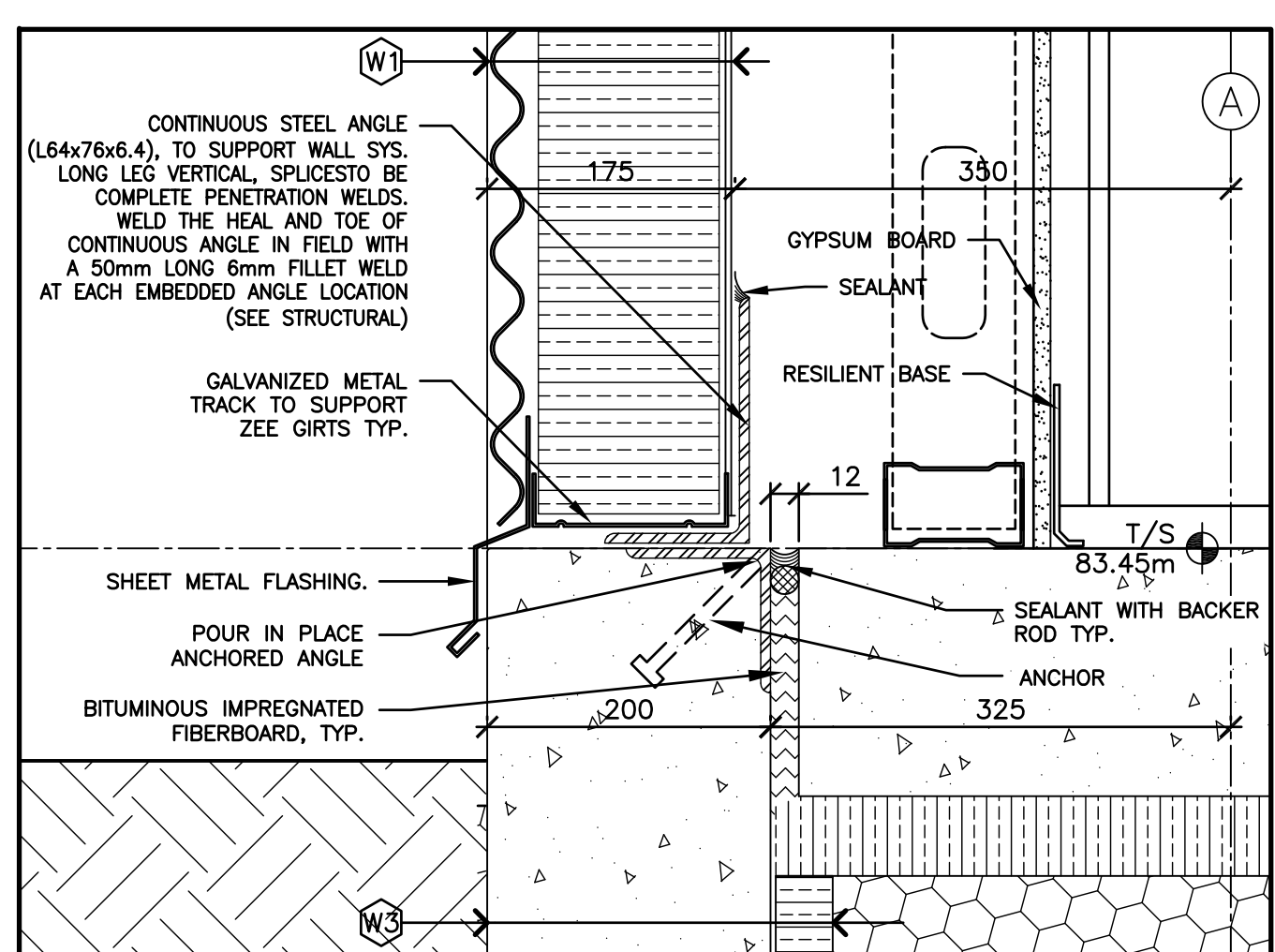
11 SECTION DETAIL
A600 SCALE: 1:5



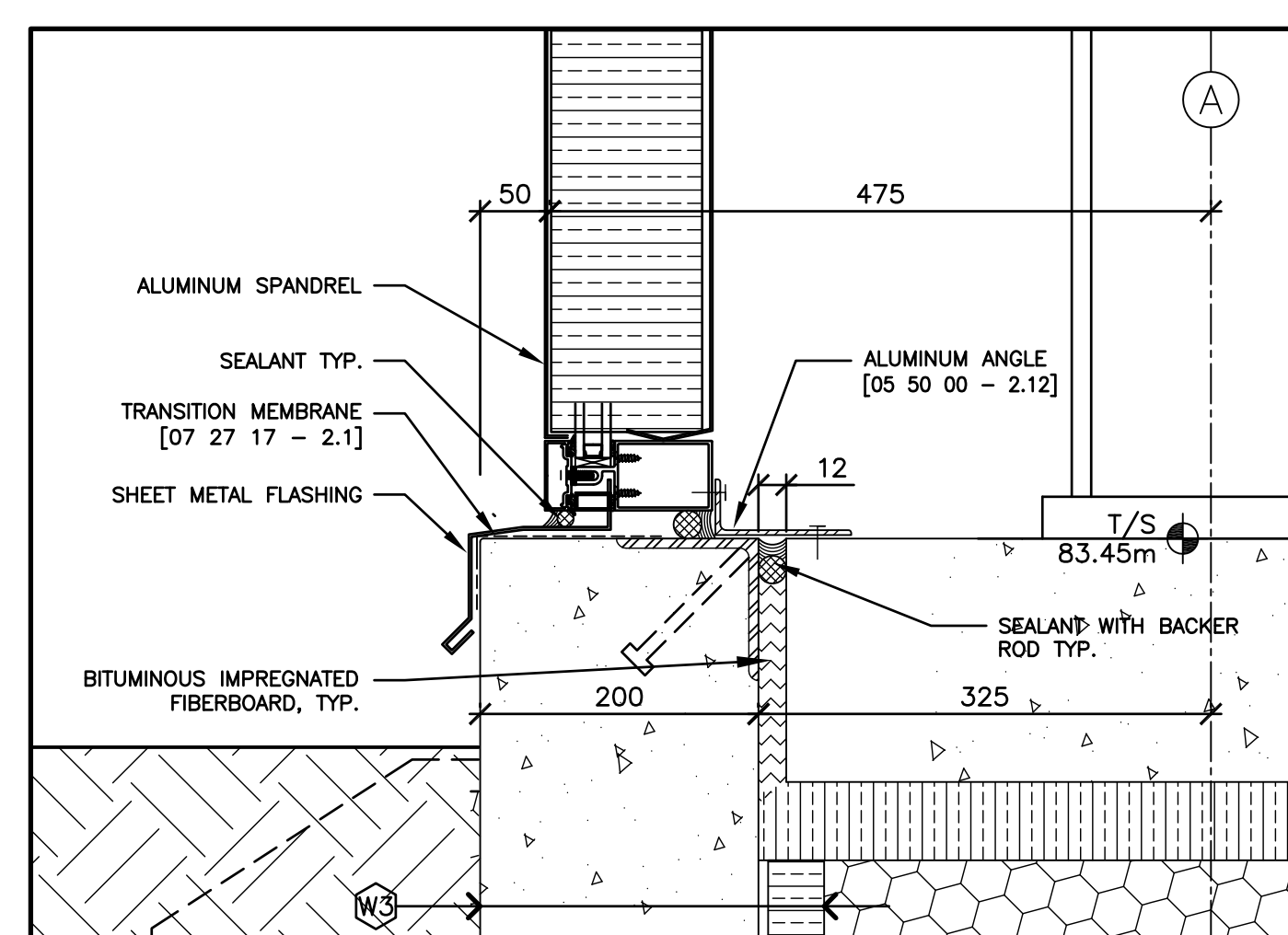
10 SECTION DETAIL
A600 SCALE: 1:5



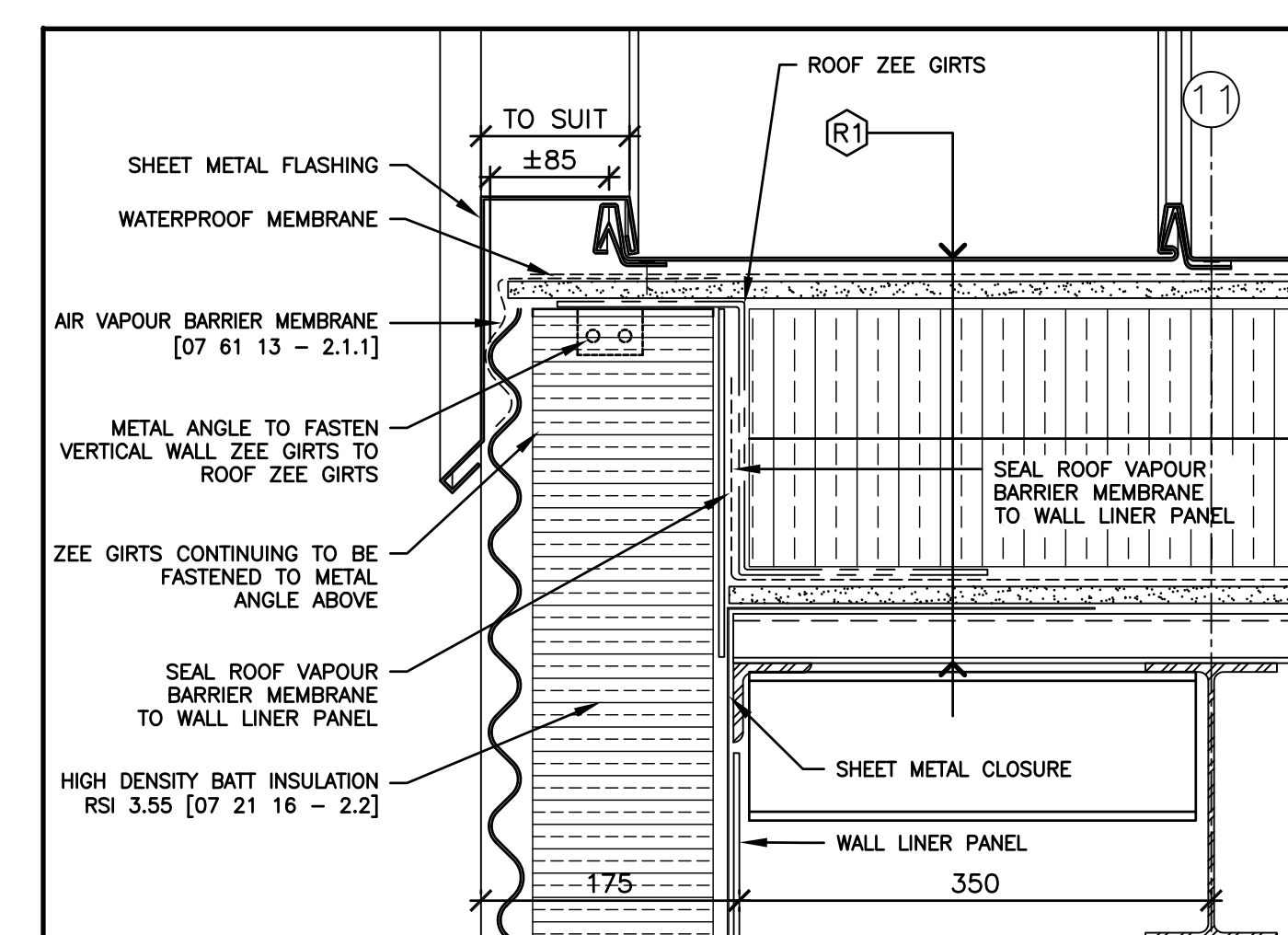
9 SECTION DETAIL
A600 SCALE: 1:5



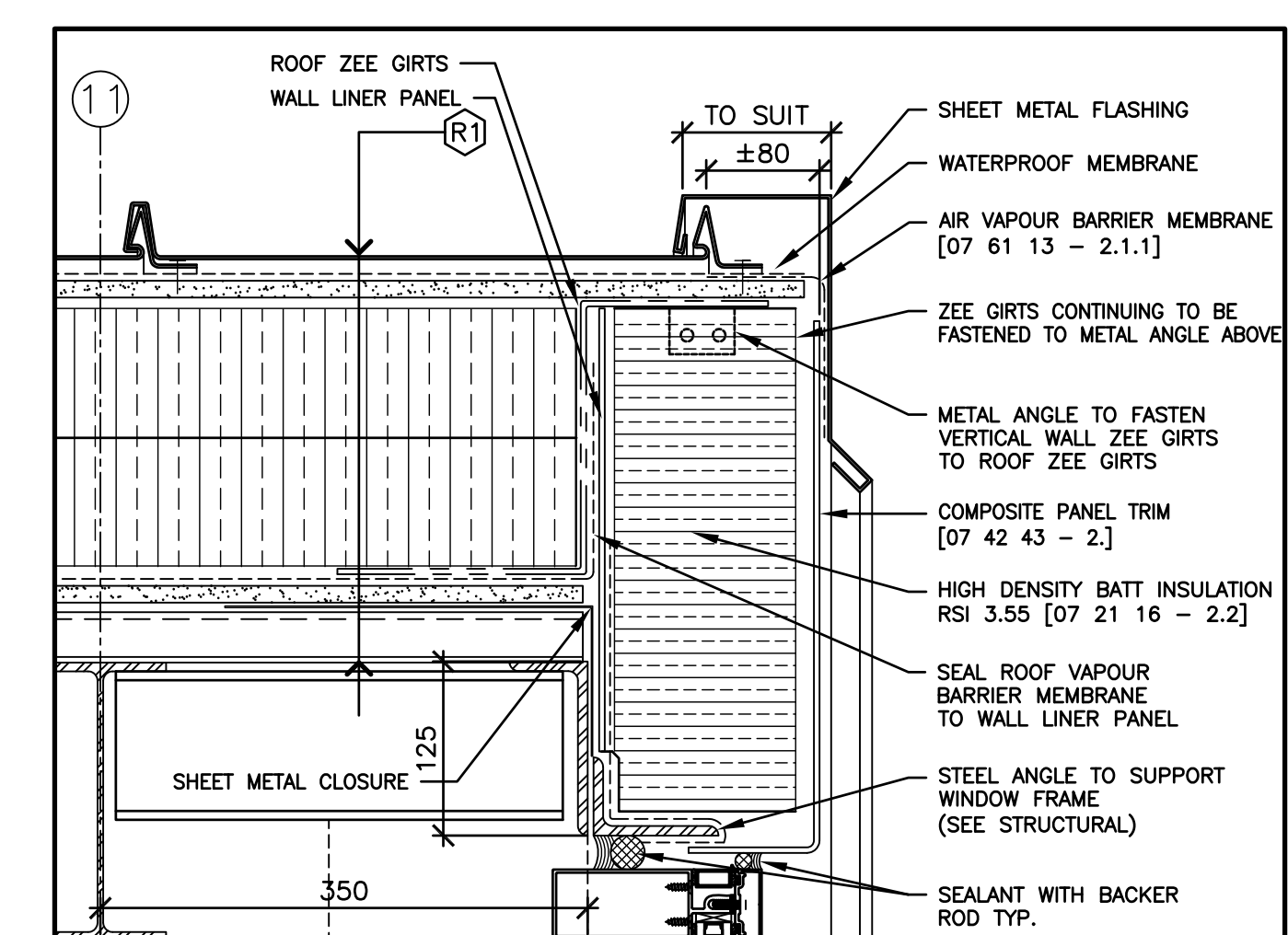
8 SECTION DETAIL
A600 SCALE: 1:5



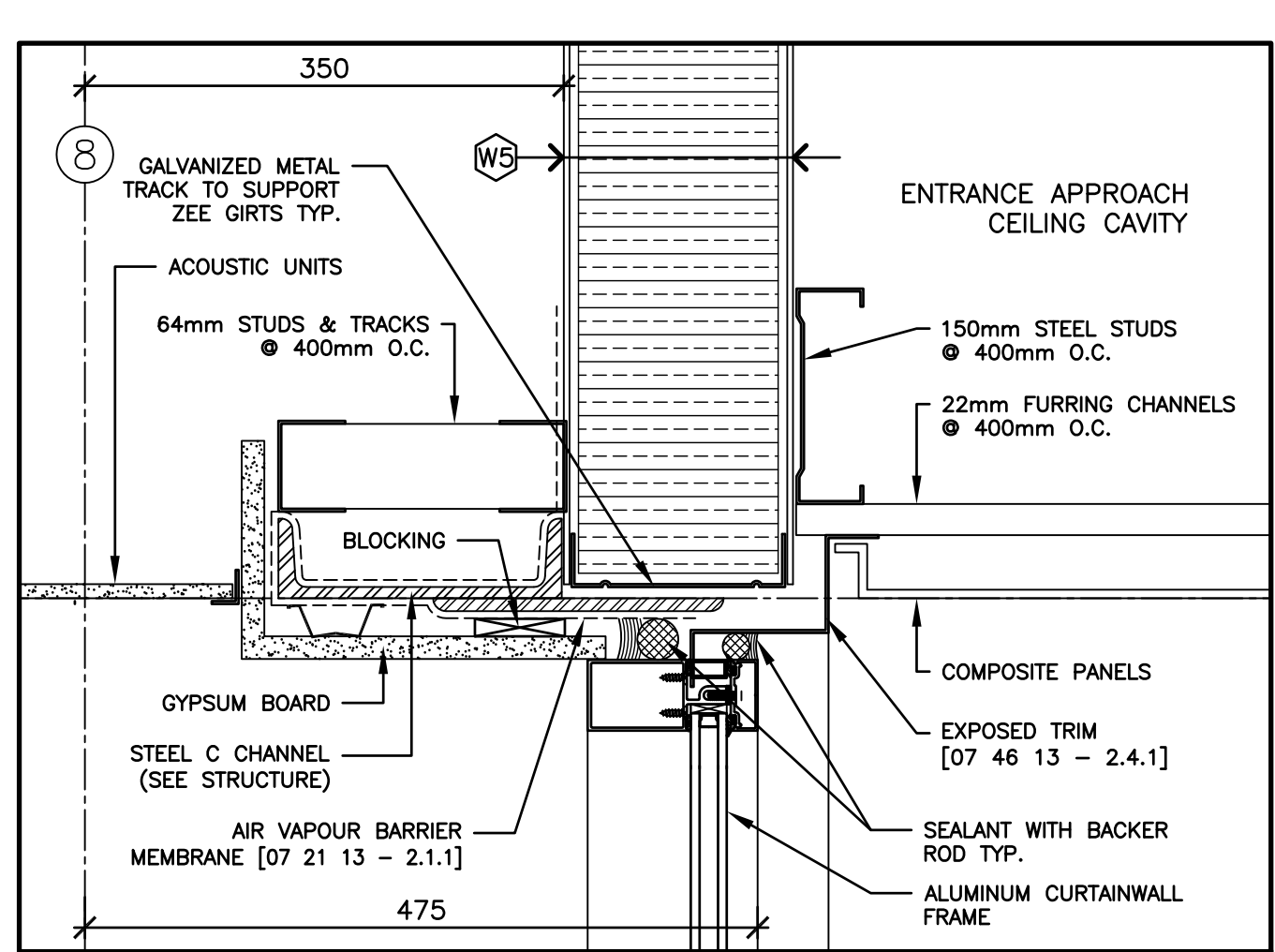
7 SECTION DETAIL
A600 SCALE: 1:5



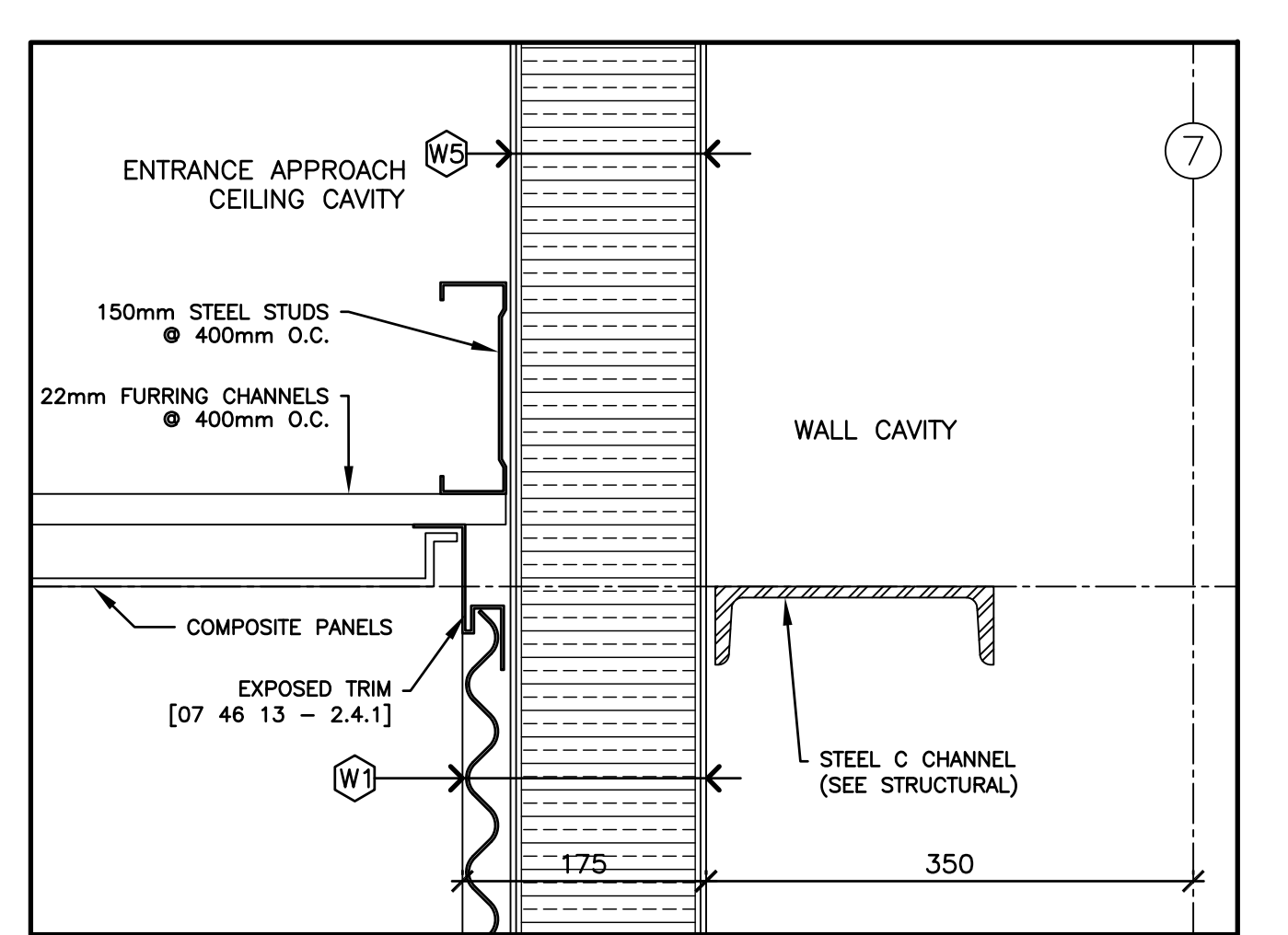
6 SECTION DETAIL
A600 SCALE: 1:5



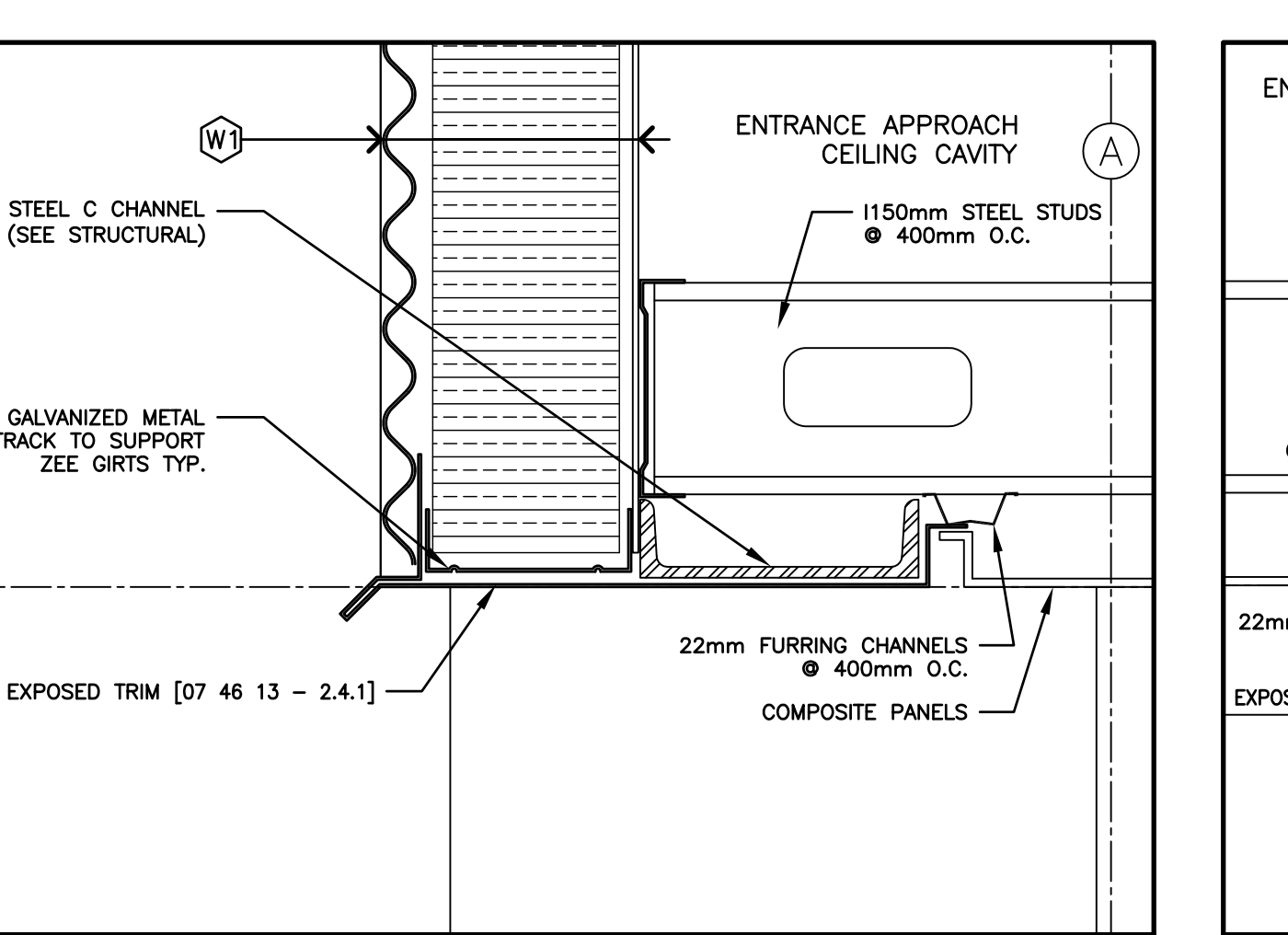
5 SECTION DETAIL
A600 SCALE: 1:5



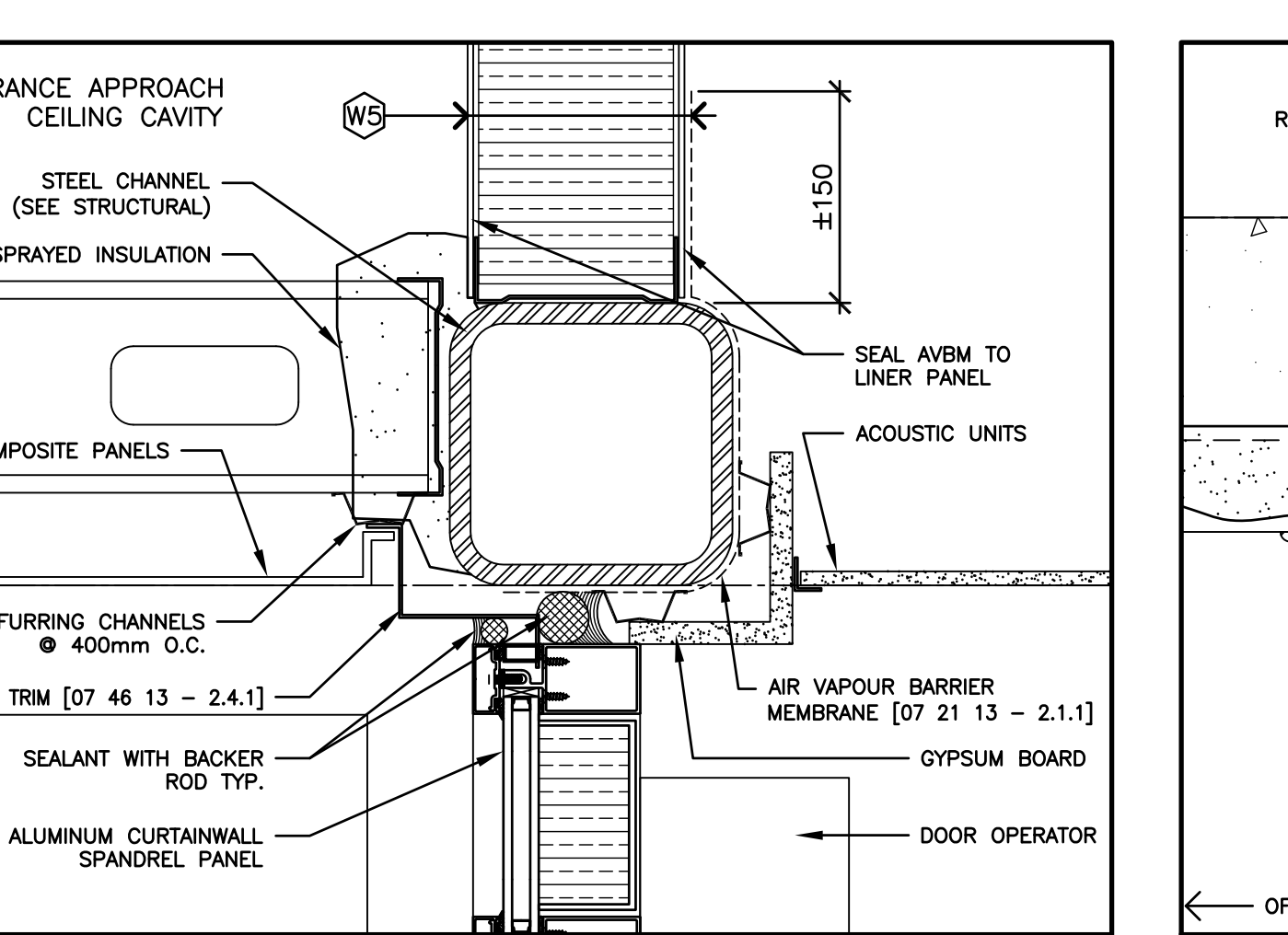
4 SECTION DETAIL
A600 SCALE: 1:5



3 SECTION DETAIL
A600 SCALE: 1:5



2 SECTION DETAIL
A600 SCALE: 1:5



1 SECTION DETAIL
A600 SCALE: 1:5

- KEYNOTES**
- R1** ROOF ASSEMBLY (±300mm OVERALL THICKNESS):
 - PREFORMED STANDING SEAM PANEL WITH 22mm HIGH SEAM [07 61 00 - 2.1.1.4.1]
 - ±15mm AIR SPACE
 - WATERPROOF MEMBRANE [07 61 00 - 2.2.1]
 - 12mm SHEATHING [07 61 00 - 2.2.2]
 - ±200mm ZEE GIRTS [07 61 00 - 2.3.1]
 - C/O 2 LAYERS ±100mm RIGID EXTRUDED POLYSTYRENE INSULATION RSI 7.04 [07 21 12 - 2.1.2]
 - VAPOR BARRIER MEMBRANE [07 61 00 - 2.2.4]
 - 12mm DECK SHEATHING [07 61 00 - 2.2.2]
 - 38mm STEEL DECKING [05 31 00 - 2.2.1]
 - W1** WALL ASSEMBLY (±175mm OVERALL THICKNESS):
 - 22mm EXTERIOR STEEL CLADDING PANELS [07 46 13 - 2.1.1]
 - ±25mm AIR SPACE
 - ±152mm VERTICAL ZEE GIRTS [07 46 13 - 2.4.2]
 - C/W HIGH DENSITY BATT INSULATION RSI 3.55 [07 21 16 - 2.2]
 - INTERIOR LINER PANEL [07 46 13 - 2.2]
 - W3** FOUNDATION WALL ASSEMBLY:
 - CAST-IN-PLACE CONCRETE WALL - SEE STRUCTURAL
 - ±40mm RIGID EXTRUDED POLYSTYRENE INSULATION RSI 1.32 [07 21 12 - 2.1.2]
 - WS** BULKHEAD ASSEMBLY (±130mm OVERALL THICKNESS):
 - INTERIOR LINER PANEL [07 46 13 - 2.2]
 - ±127mm VERTICAL ZEE GIRTS [07 46 13 - 2.4.2]
 - C/W HIGH DENSITY BATT INSULATION RSI 3.55 [07 21 16 - 2.2]
 - INTERIOR LINER PANEL [07 46 13 - 2.2]

Public Works and Government Services Canada / Travaux publics et Services gouvernementaux Canada

Real Property Operations Branch
Real Property Operations Solutions
Direction générale des opérations immobilières
Solutions - Opérations immobilières

Project Delivery & Professional and Technical Services
Exécution de projets et Services experts/consils techniques

Watson MacEwen Teramura Architects
400-116 Lisgar Street
Ottawa, ON K2P 0C2
1613.232.0330
1613.232.6253

Structural Engineers
Halsall Associates
4001-210 Gladstone Avenue
Kingston, Ontario K2P 0V6
613.237.2462

Mechanical / Electrical Eng.
Bouthillier Parizeau & Associates
100 - 1960 Robertson Road
Ottawa, ON K2H 5B9
613.596.6454

Civil Engineers
WSP Group
201-1224 Gardiners Road
Kingston, Ontario K7P 0G2
613.634.7373

IT-Telecommunications
The Attain Group
208-1600 Woodward Drive
Ottawa, ON K2C 3R7
613.739.9424

key plan plan-06

01 ISSUED FOR TENDER 15/03/16

A detail no. n° du détail
B location drawing no. sur dessin n°
C drawing no. dessin n°

project project

**CSC MULTI-PURPOSE BUILDING
CBI MINIMUM INSTITUTION (FRONTENAC)**
KINGSTON, ONTARIO

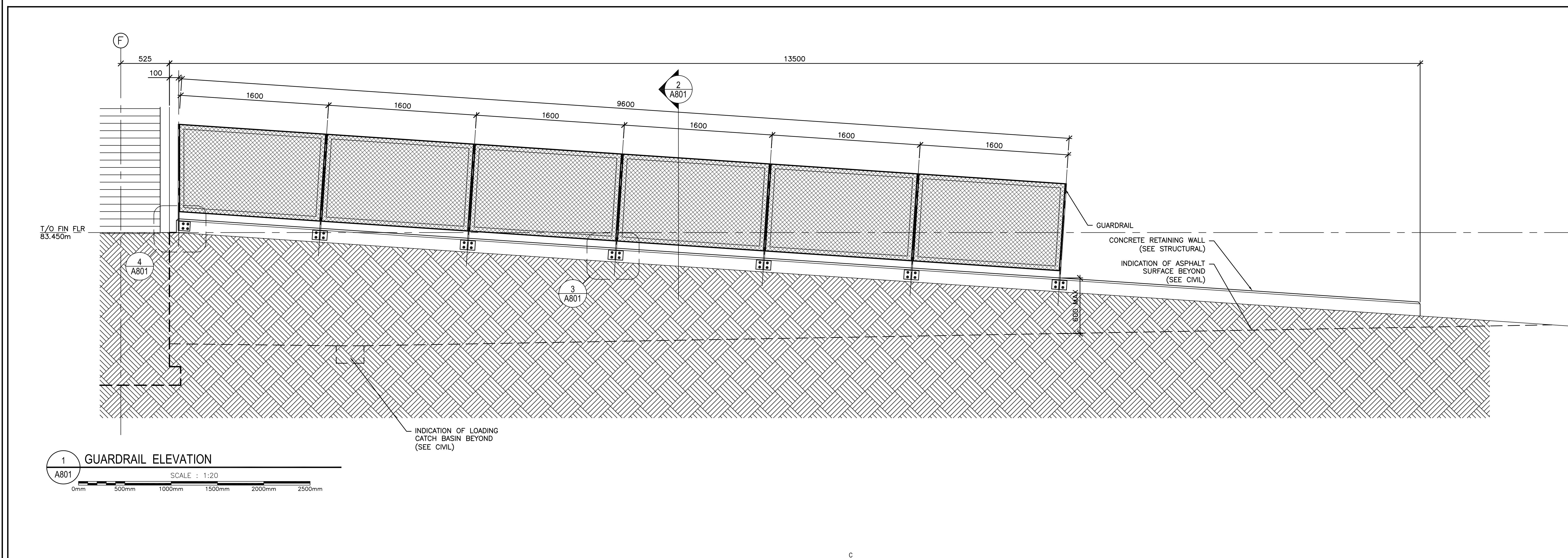
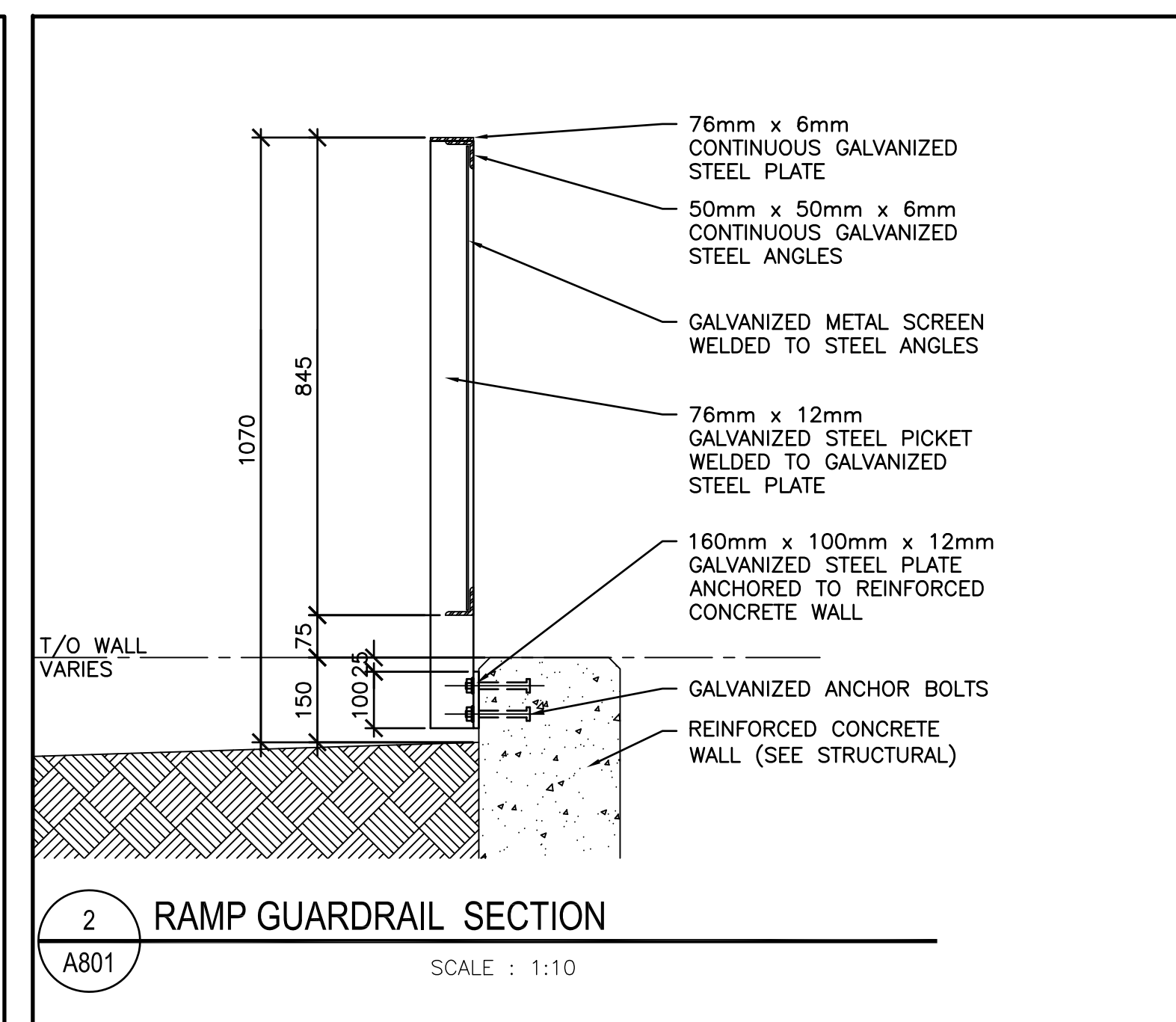
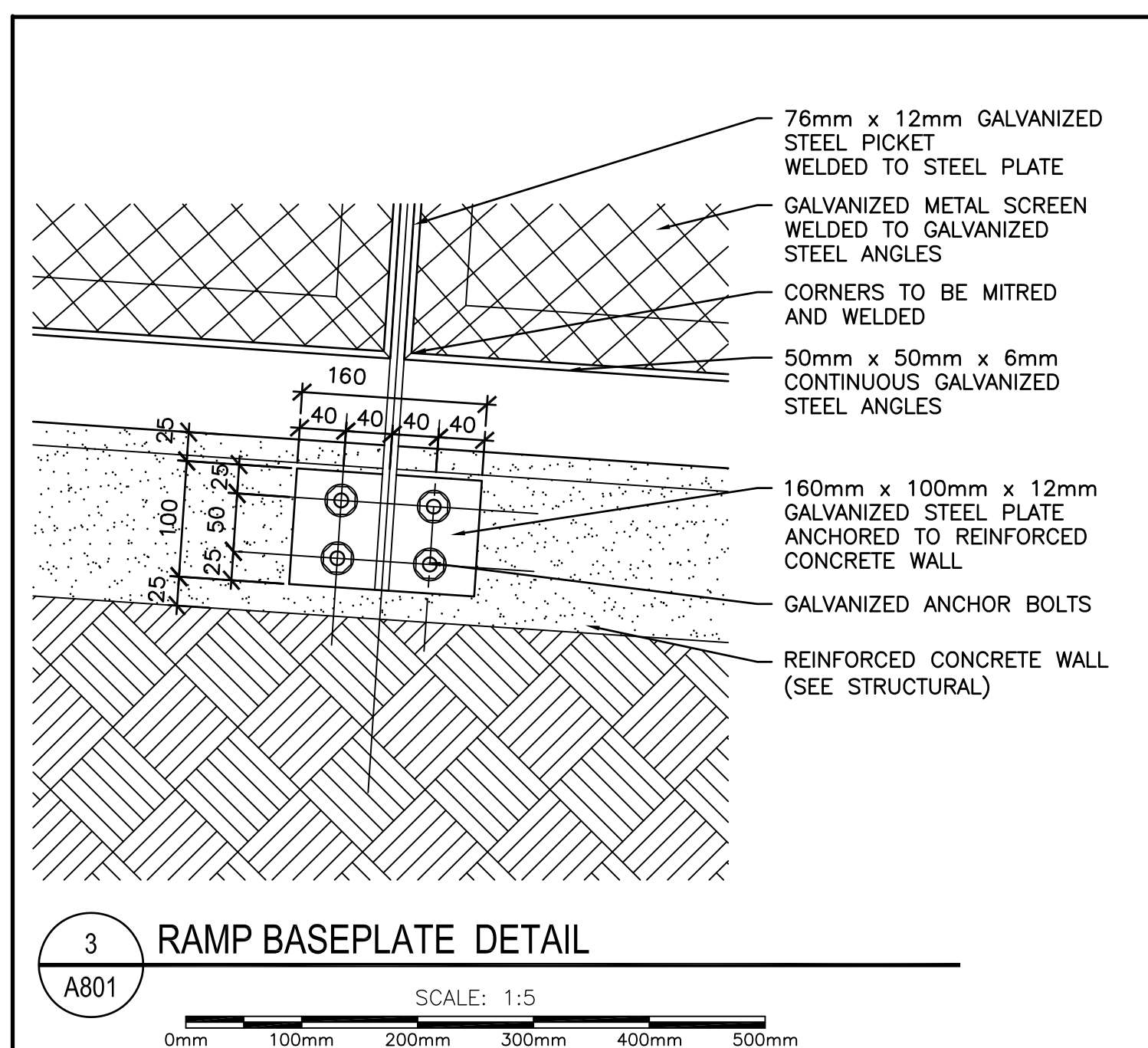
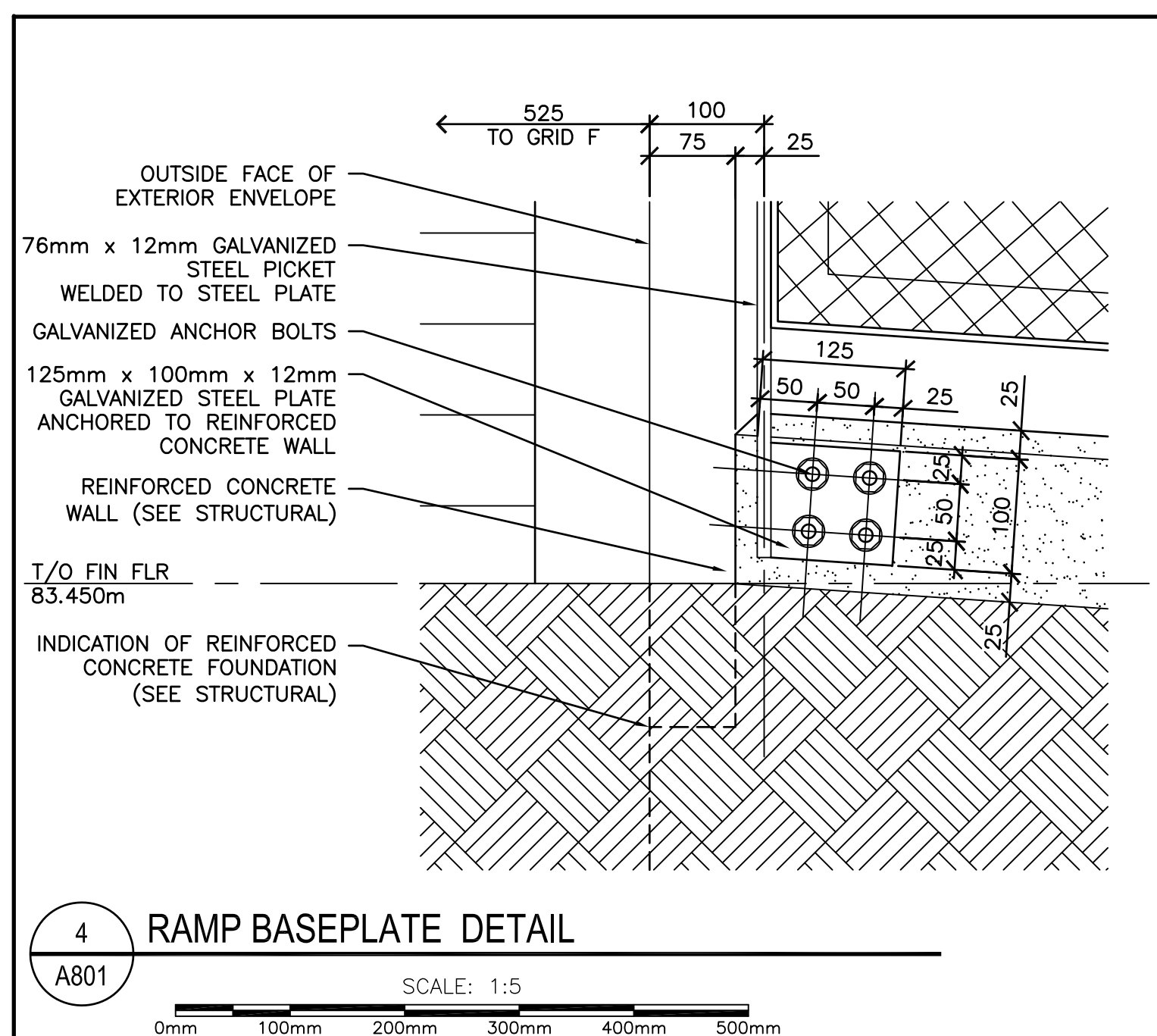
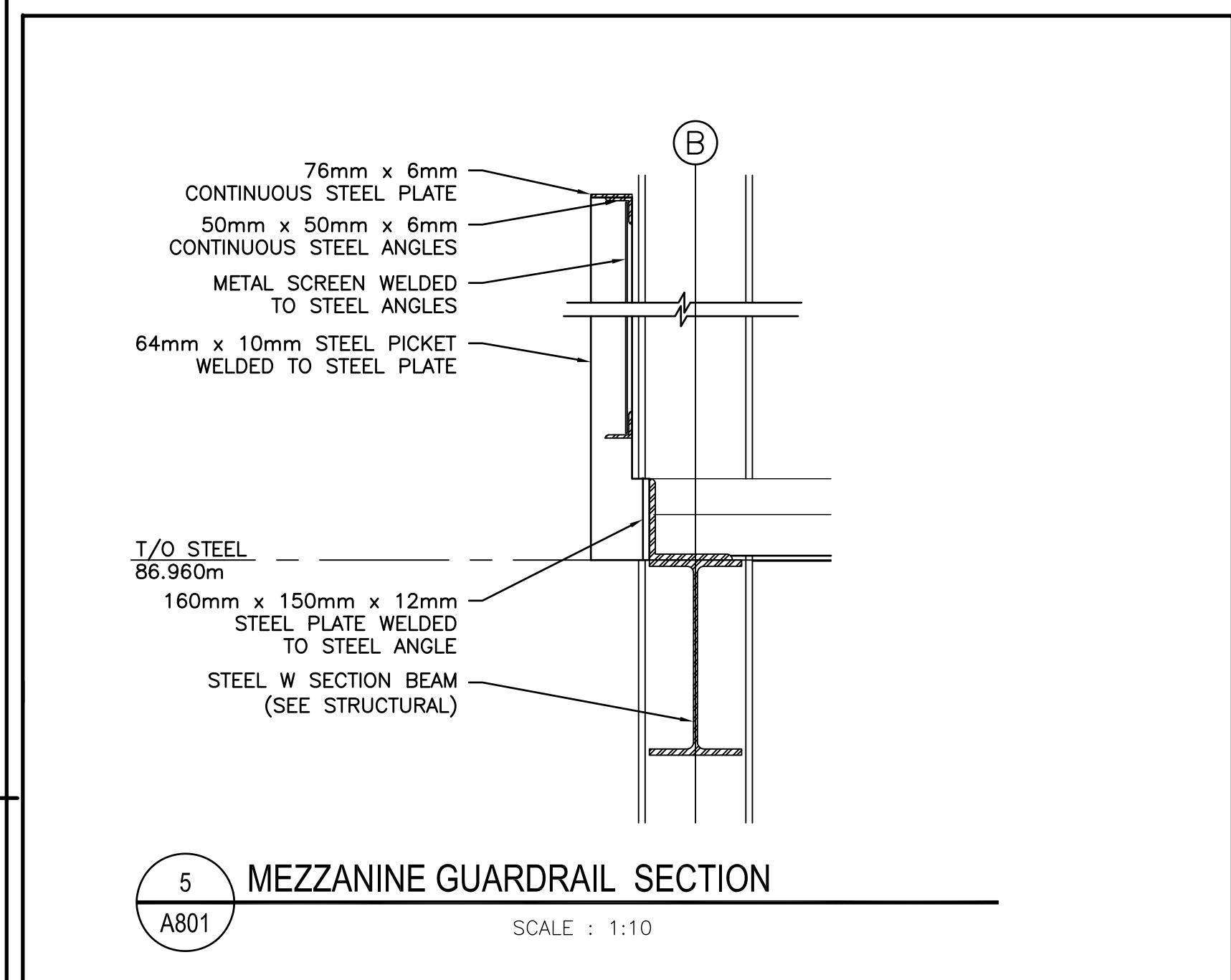
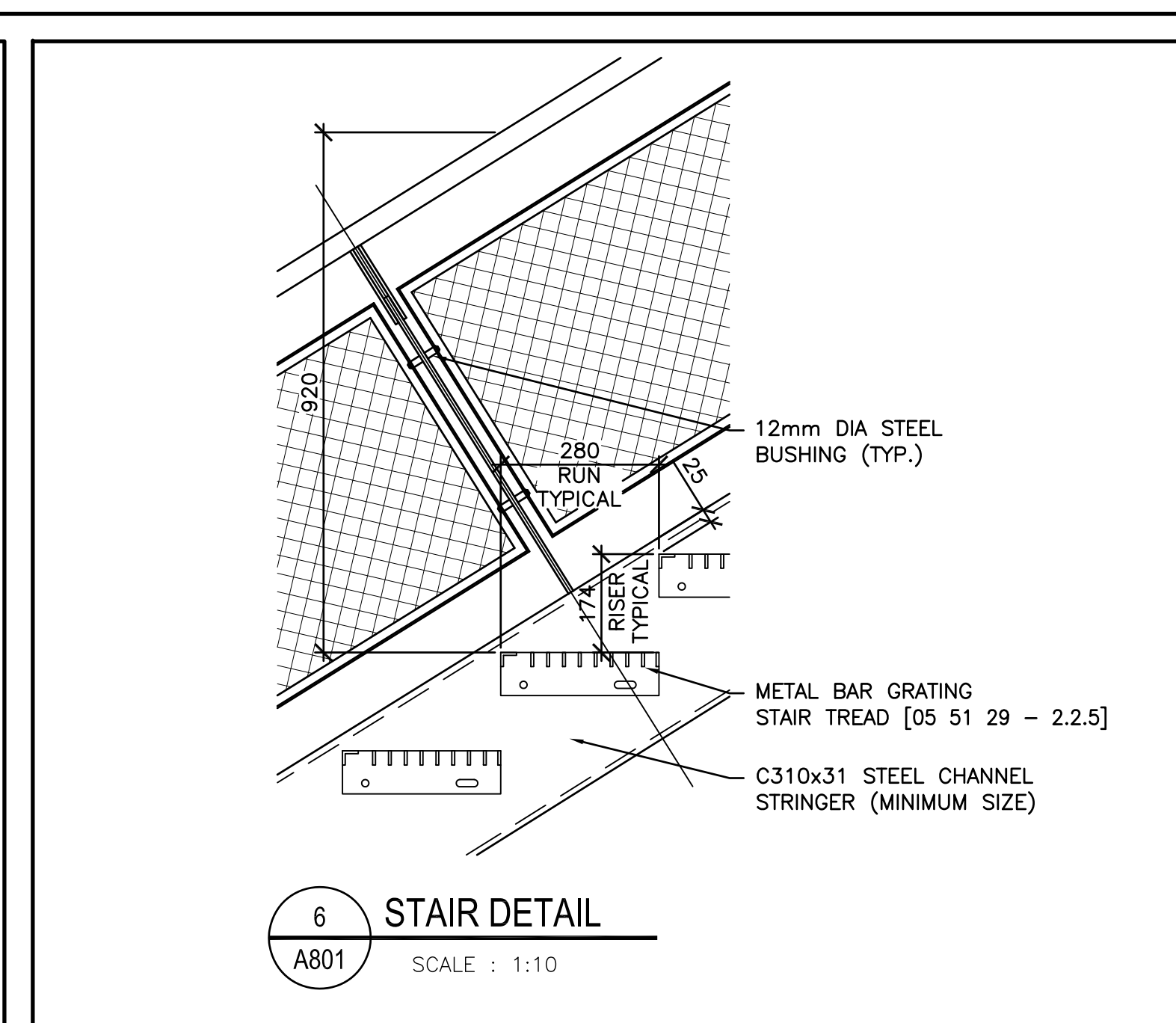
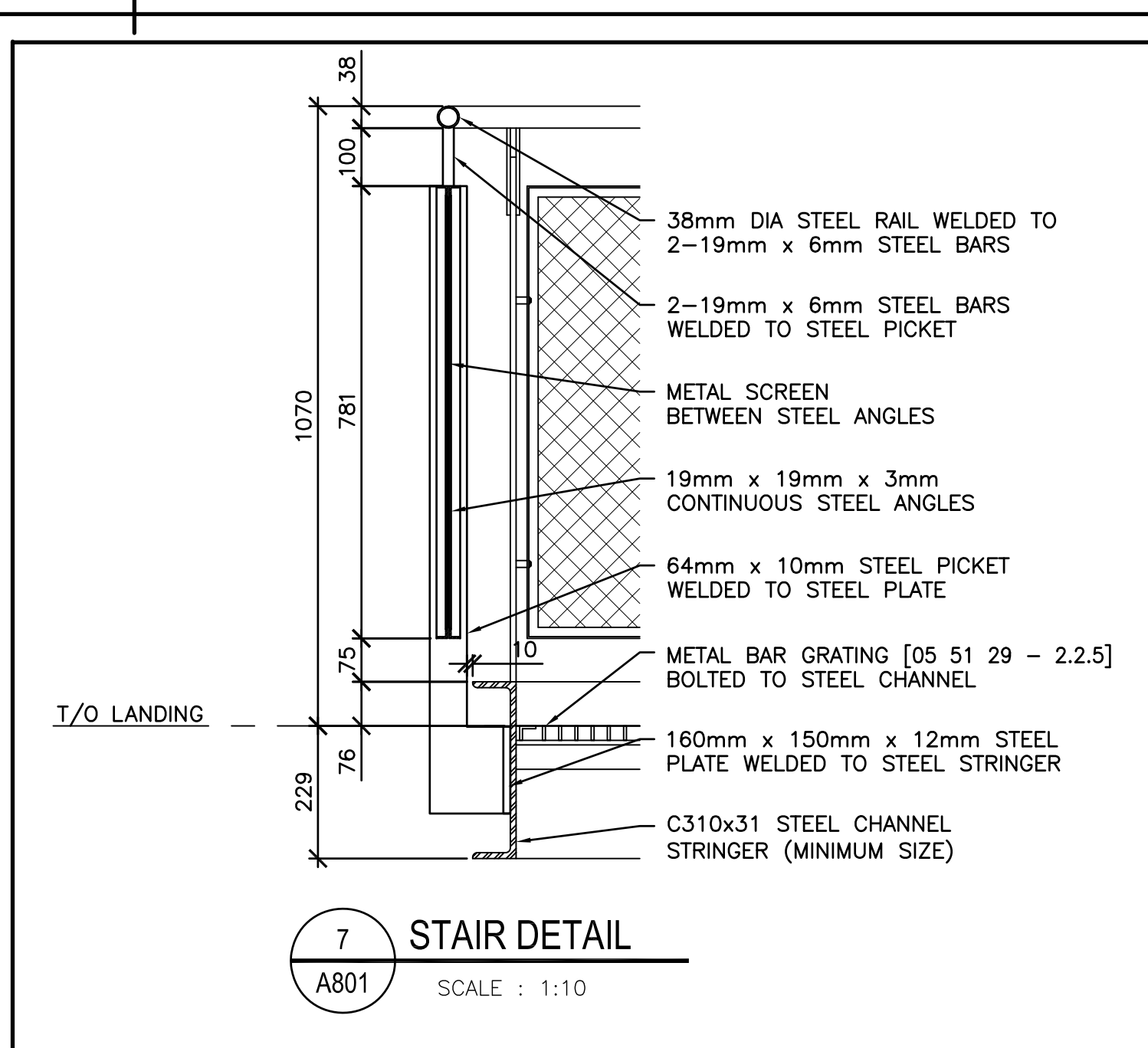
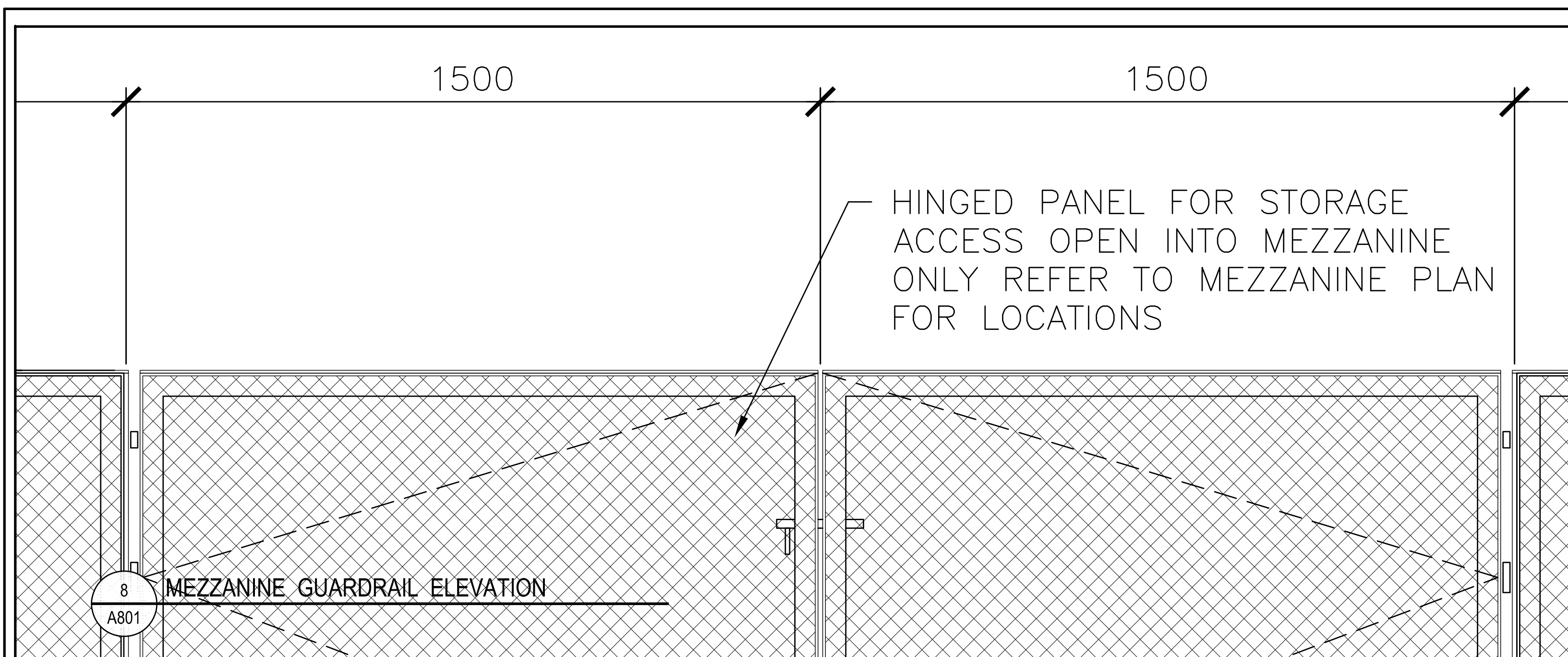
drawing dessin

designed Mackay-Lyons Sweetapple compu
date 2012/01/01 (yyyy/mm/dd)
drawn BML dessin
date 2012/11/16 (yyyy/mm/dd)
reviewed DC / CF examiné
date 2016/02/23 (yyyy/mm/dd)
approved RM approuvé
date 2015/03/12 (yyyy/mm/dd)
Tender DUNCAN PARKER Soumission

Project Manager Administrateur de projets
project no. no. du projet

R.055776.001
drawing no. no. du dessin
A600

08.07.2014
1403-A600 SectionDetails-003.dwg
PWGSC B1 (1000x707)



Public Works and Government Services Canada / Travaux publics et Services gouvernementaux Canada

Real Property Operations Branch / Direction générale des opérations immobilières / Solutions - Opérations immobilières

Project Delivery & Professional and Technical Services / Exécution de projets et Services experts/consils techniques

Watson MacEwen Teramura Architects
400-116 Lisgar Street
Ottawa ON K2P 0Z2
613.232.0330
613.232.6253

Structural Engineers / Mechanical / Electrical Eng. / Associates
Halsall Associates / 4001-210 Gladstone Avenue / Ottawa, ON K2P 0V6 / 613.237.2462
Bouthillier Parizeau & Associates / 100 - 1960 Robertson Road / Ottawa, ON K2H 5B9 / 613.596.6454

Civil Engineers / IT-Telecommunications / WSP Group / The Attain Group
201-1224 Gardiners Road / 208-1800 Woodward Drive / Kingston, Ontario K7P 0G2 / Kingston, ON K2C 3R7 / 613.634.7373 / 613.739.9424

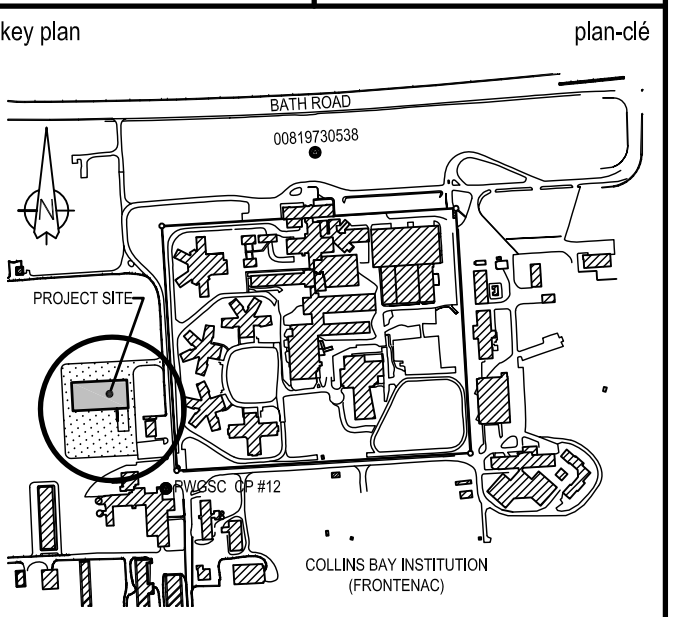
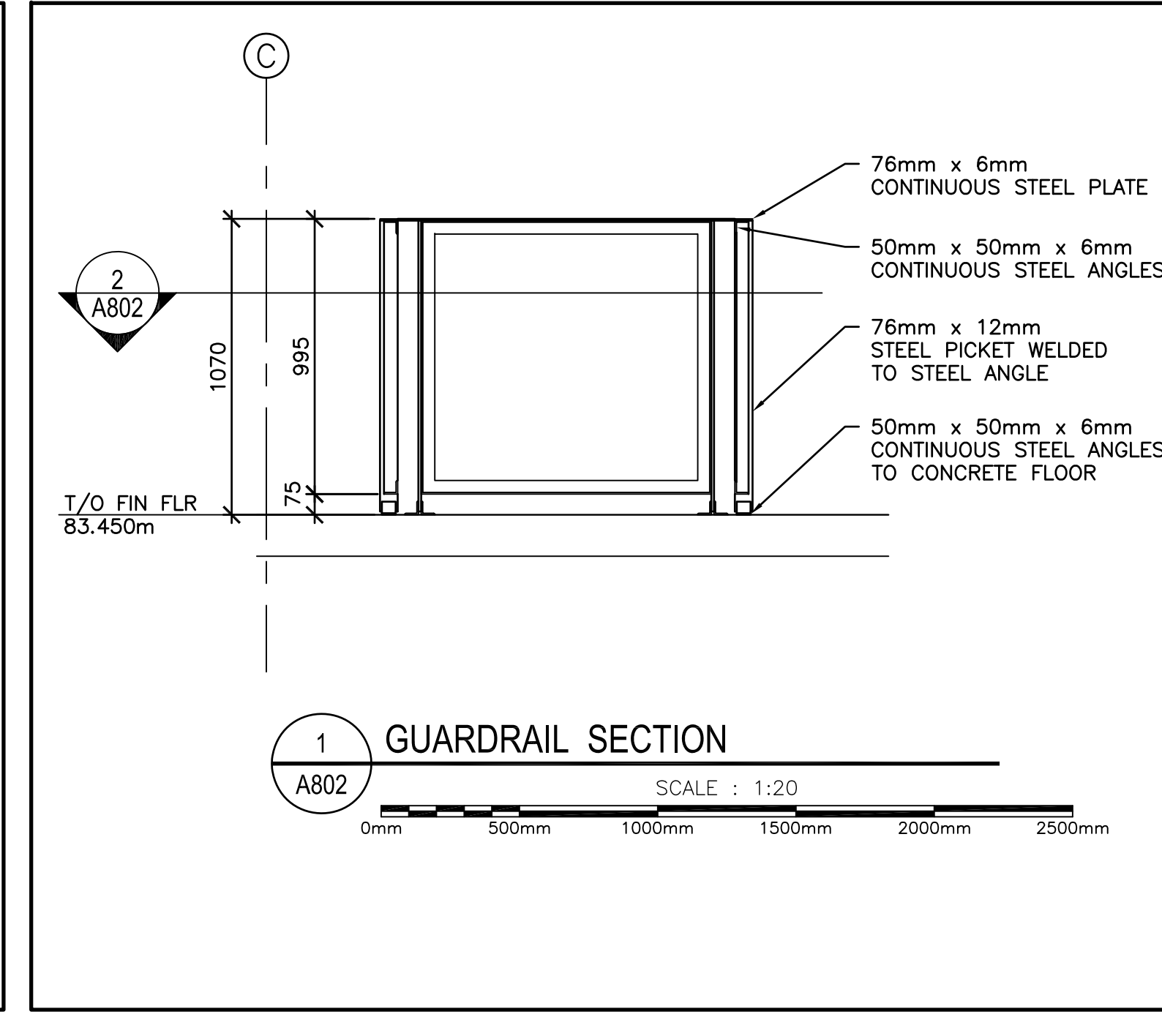
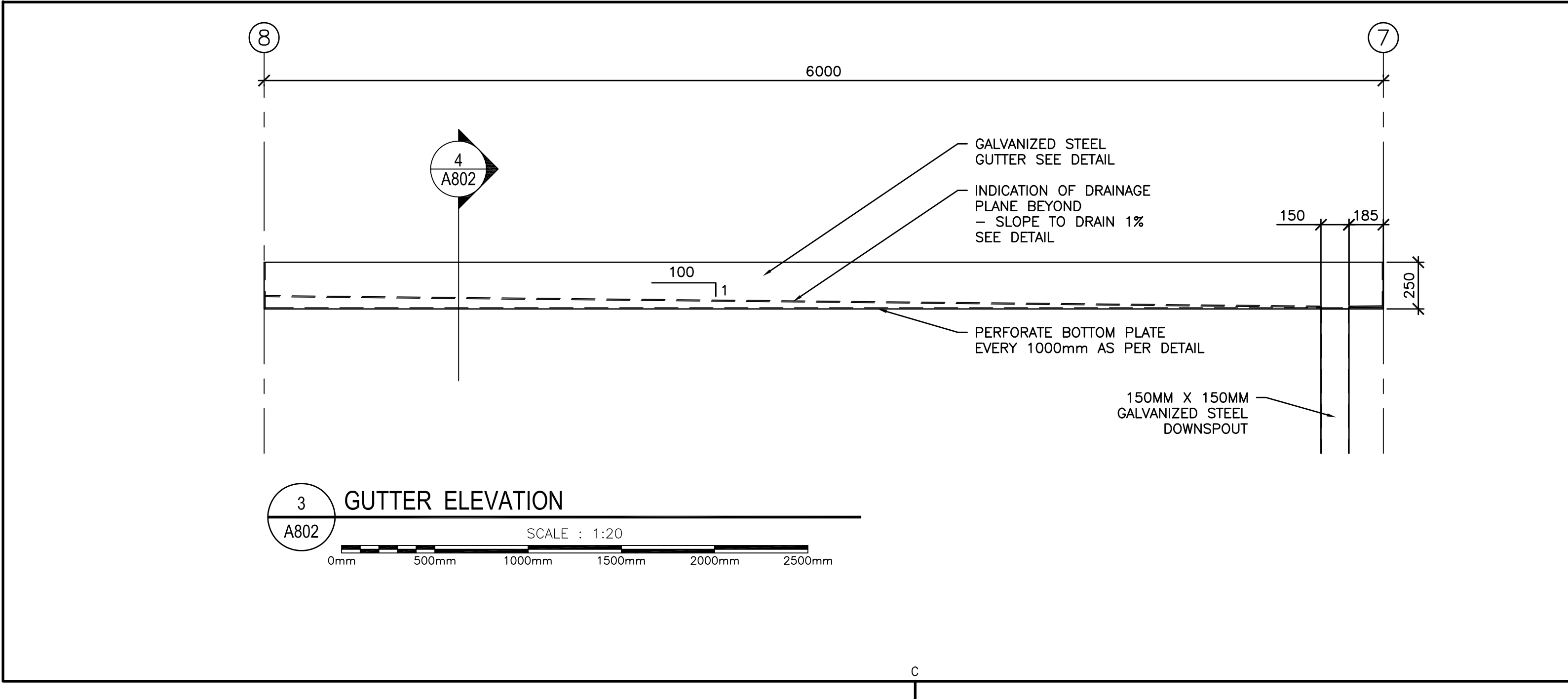
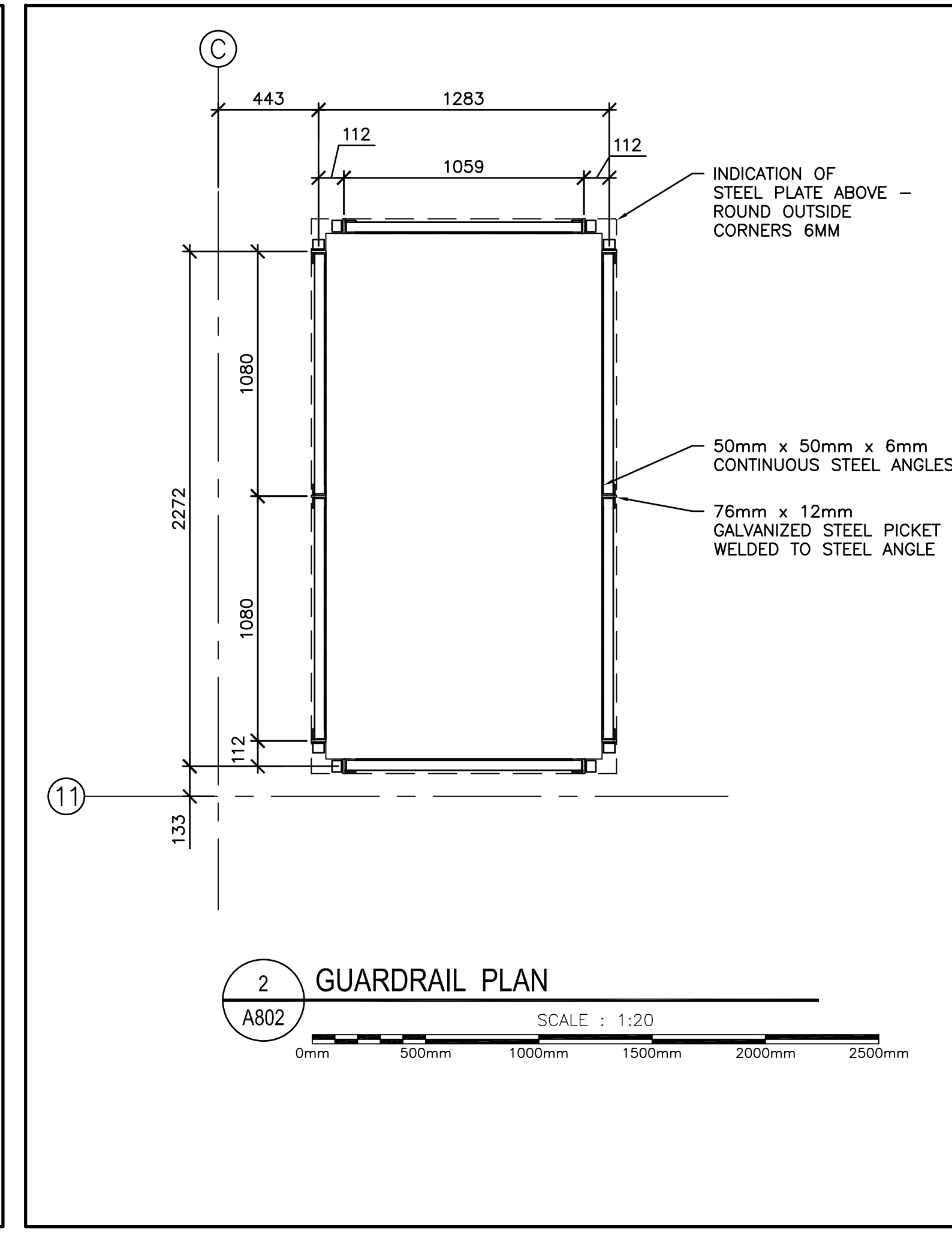
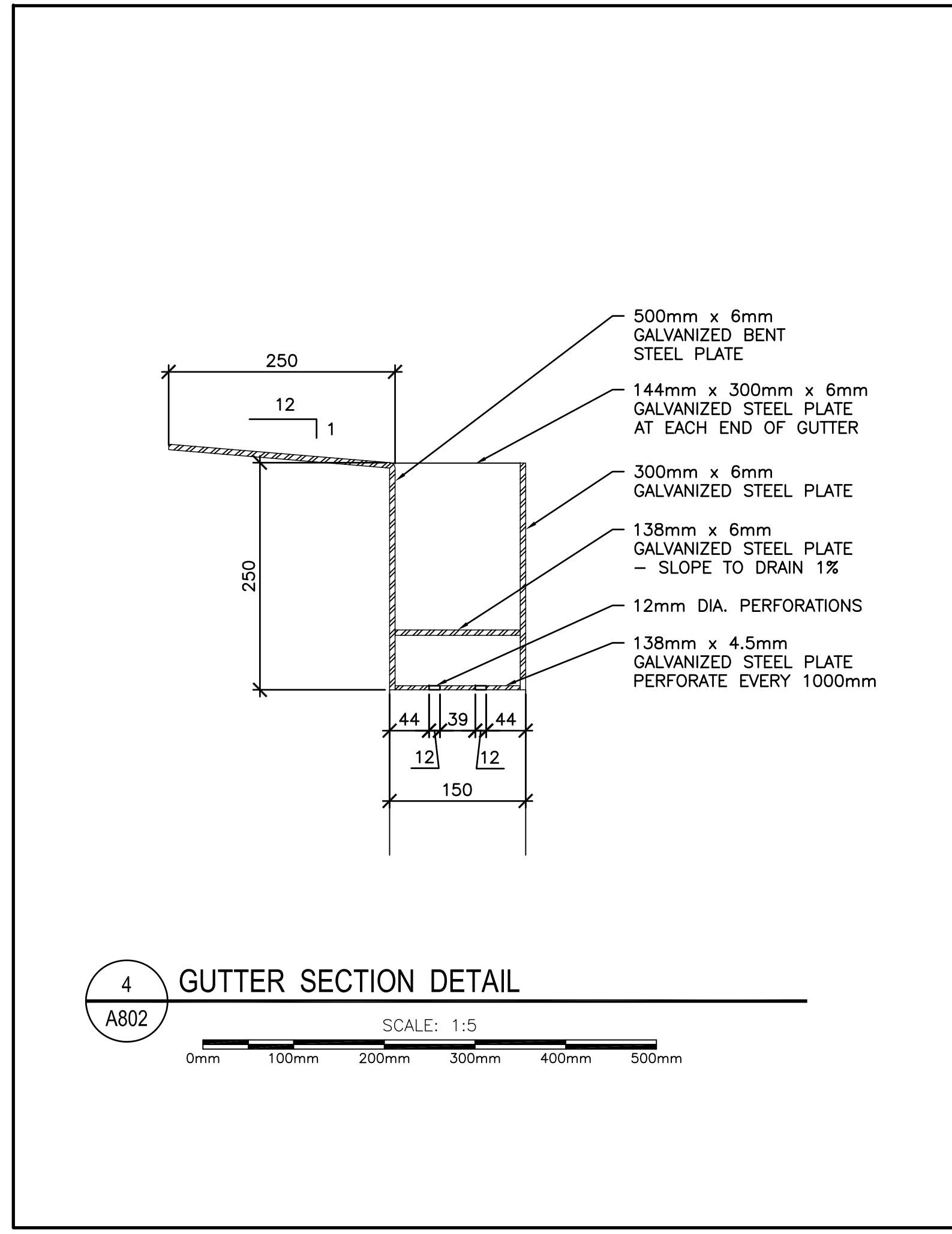
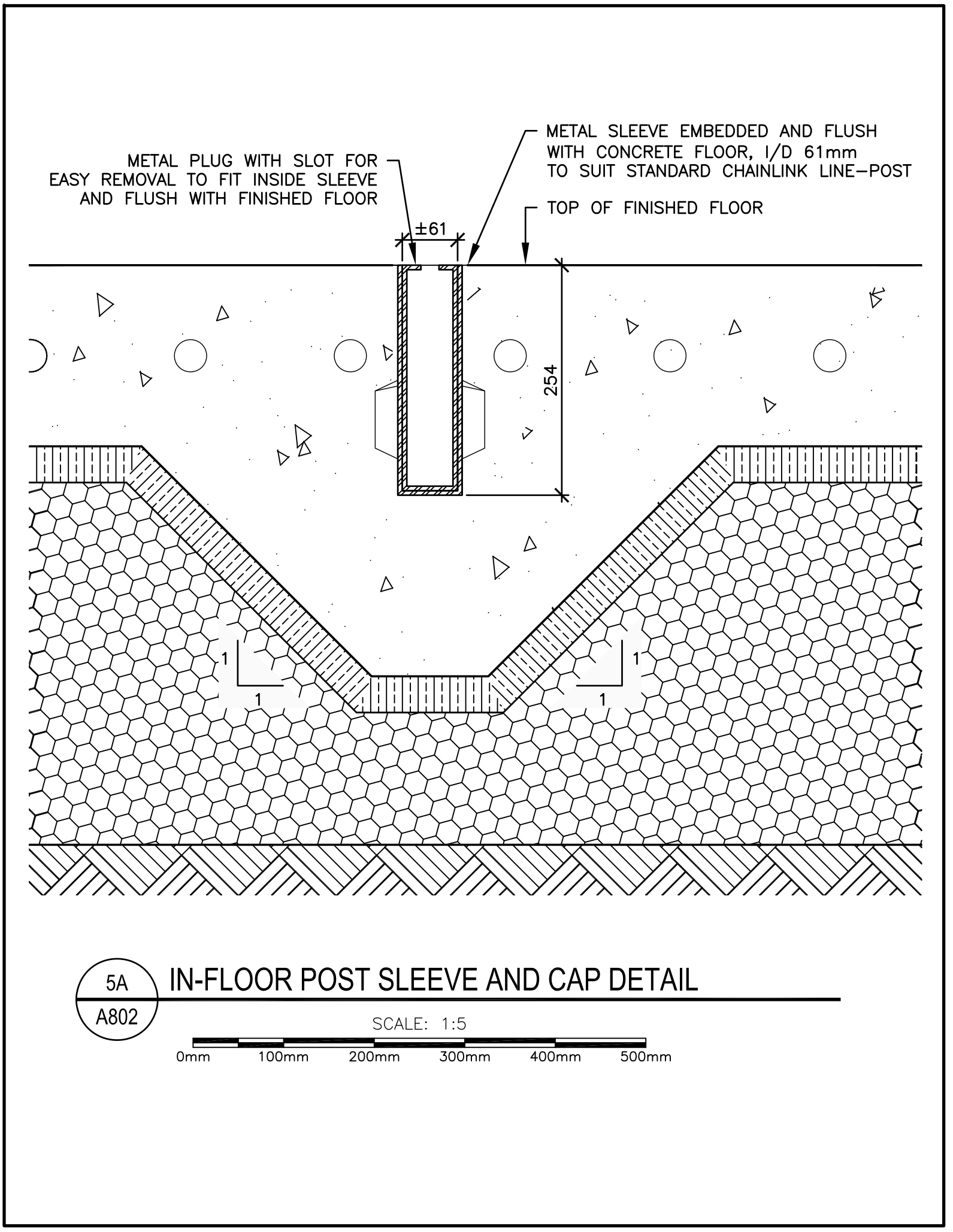
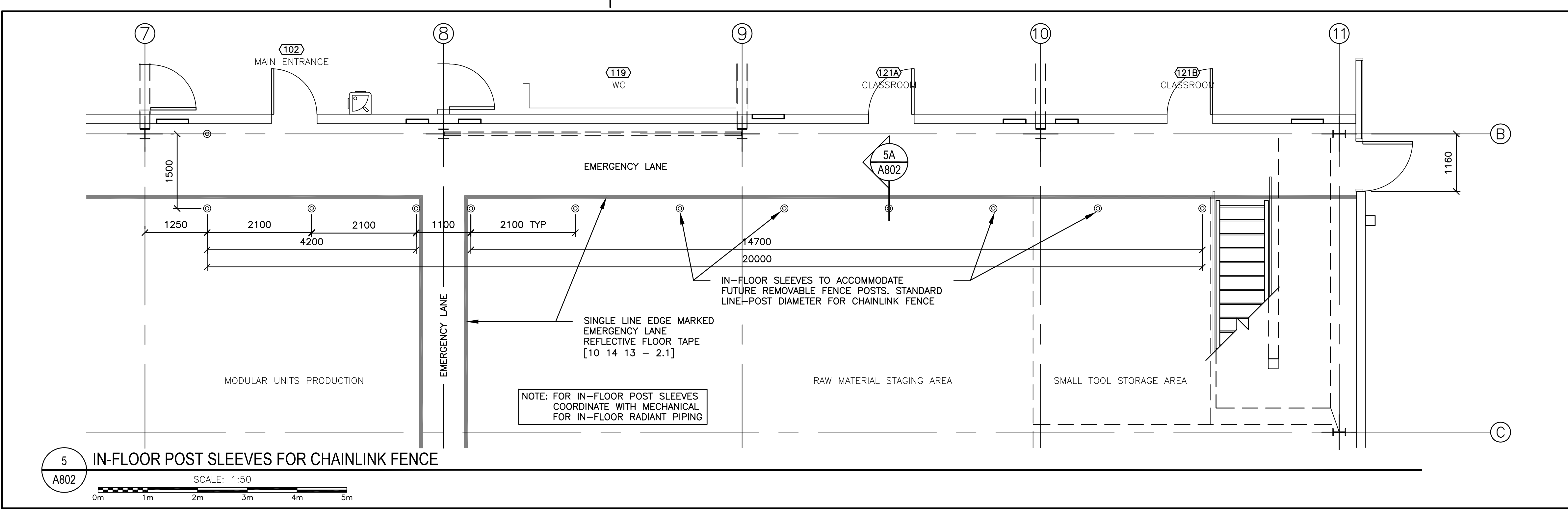
key plan / plan-clé

ONTARIO ASSOCIATION OF ARCHITECTS
SERIES ST. CLAIR MACEWEN LICENCE 3878

01	ISSUED FOR TENDER	15/03/26
revision	description	date
A	A detail no. n° du détail	A
C	B location drawing no. sur dessin n°	B
	C drawing no. dessin n°	C
project	CSC MULTI-PURPOSE BUILDING CBI MINIMUM INSTITUTION (FRONTENAC) KINGSTON, ONTARIO	project
drawing	MISCELLANEOUS METALS	dessin
designed	Mackay-Lyons Sweetapple	compu
date	2012/01/01	(yyyy/mm/dd)
drawn	BML	dessiné
date	2012/11/16	(yyyy/mm/dd)
reviewed	DC / CF	examiné
date	2015/02/23	(yyyy/mm/dd)
approved	RM	approuvé
date	2015/03/12	(yyyy/mm/dd)
tender	DUNCAN PARKER	Soumission
Project Manager	Administrateur de projets	project no.
		R.055776.001
drawing no.		no. du dessin
		A801

08.07.2014

1403-A800_A802 MiscDetails-004.dwg



revision	description	date
01	ISSUED FOR TENDER	15/03/26

A	B	C
detail no. n° du détail	location drawing no. sur dessin n°	drawing no. dessin n°

CSC MULTI-PURPOSE BUILDING
 CBI MINIMUM INSTITUTION (FRONTENAC)
 KINGSTON, ONTARIO

MISCELLANEOUS METALS

designed	drawn	date	reviewed	approved	date	Tender
Mackay-Lyons Sweetapple	BML	2012/01/01	DC / GF	RM	2015/03/12	DUNCAN PARKER

Project Manager / Administrateur de projets
 project no. / no. du projet
R.055776.001
 drawing no. / no. du dessin
A802