



Royal Canadian Mounted Police
Gendarmerie royale du Canada

Doc. no: G.S. 1045-264
Date: 2019-04-02

Specification

Trouser, Blue, Officer's

This document has 25 pages including the drawings.

This document was created in English.

The document is available in English and French.

English/Anglais
Français/French

The photograph on this page is for reference only.



Modifications

Date	Para. No's	Modifications
1990-11-08		Original specification.
1998-08-07	Entire Specification	Specification re-issued. Eliminate belt loop from back of trousers. Scale of Measurements amended.
2000-09-25	Updated CGSB Page 2, Para. 4.1.2 Page 6, Para. 4.3.12 Page 8, Table I Appendix "A" Scale of Measurement	2.2, 2.3, 2.6, 4.1.4.1, 4.1.4.2, 4.1.4.3, 4.3.12 Pre-folded stripe to be purchased from RCMP Added care label chart in English & French New Table updated with current information Deleted page Changed height range for females.
2003-08-13	Entire Specification	Re-issued and updated entire specification. Revised Scale of Measurements. Size rolls expanded.
2003-11-21	Scale of Measurement	Scale of Measurement outseam amended.
2006-06-27	Entire Specification	Re-issued and updated entire specification to include newly released patterns.
2006-07-24	Scale of Measurement	Scale of Measurement adjusted to reflect patterns.
2007-05-07	Entire Specification	Re-issued and updated entire specification to ensure consistency with other trouser specs. Technical data added for waistbanding.
2012-11-02	Para. 4.1.3.1 Para. 4.1.4.1, 4.1.4.2 Para. 4.3.13	Lining waistband, pocket, fly Table added. Certificate of compliance required. Updated the thread requirement as per industry recommendation and added Certificate of Compliance requirement. Specify date in numeric form.
2016-06-17		Re-formatted specification.
2019-04-02	Para. 2.2 Para. 4.1.3 Para. 4.1.4 Para. 4.1.6 Para. 4.1.7, 4.3.6 Scale of Measurements Drawings Patterns	Updated Test Methods. Remove reference to lining product. Thread requirement updated Revise fly zipper lengths. Update waistbanding and waistband width to reflect pattern and viewing samples. Revised Scale of Measurements Revised Drawings Revised Patterns

RCMP VIEWING SAMPLE

A viewing sample, when available, will be supplied to the successful bidder.

This will be used for the guidance of the manufacturer in all factors not covered by this specification or referred to therein. Variation from the specification may appear in the sample in which case the specification must govern.

It may be obtained from:

Royal Canadian Mounted Police
ATTN: Uniform & Equipment Program
(440 Coventry Road, Warehouse Building)
73 Leikin Drive
Ottawa, Ontario
K1A 0R2

It will be sent “prepaid” and is to be returned “prepaid”.

The viewing sample must be returned to the RCMP in the same condition as received by the manufacturer. Lost or damaged viewing samples must be replaced by an identical item or the RCMP must be reimbursed for the cost of an acceptable replacement.

SPECIFICATION
Trousers, Blue, Officer's

1. Definitions

- 1.1 This specification must govern the manufacture and inspection of Trousers, Blue, Officer's. The specific items covered under this specification with stock numbers is as follows:
- i. 4900 – Trousers, Blue, Officer's Male / Pantalon bleu pour officiers, hommes;
 - ii. 4902-100 – Trousers, Blue, Officer's Male, Special / Pantalon bleu pour officiers, hommes, taille spéciale;
 - iii. 4905 – Trousers, Blue, Officer's Female / Pantalon bleu pour officiers, femmes;
 - iv. 4903-100 – Trousers, Blue, Officer's Female, Special / Pantalon bleu pour officiers, femmes, taille spéciale.
- 1.2 This specification, pattern, drawing, viewing sample, or other information issued in connection therewith, may only be used for specific enquiries, solicitations, or orders placed on behalf of the Royal Canadian Mounted Police.
- 1.3 This specification supersedes all previous specifications for RCMP Trousers, Blue, Officer's.
- 1.4 This specification has been translated into French from this original English language document.

2. Applicable Specifications

- 2.1 The following publications are applicable to this specification and to the issues in effect on the date of the solicitation, unless otherwise specified.
- 2.2 **Canadian General Standards Board (CAN/CGSB)**
- | | |
|-------------------------|--|
| 4.2 No. 5.1-M90 (R2013) | Unit Mass of Fabrics |
| 4.2 No. 6-2013 | Textiles – Woven Fabrics – Construction – Methods of Analysis – Part 2: Determination of number of threads per unit length |

4.2 No. 9.2-M90 (R2013)	Breaking Strength of Fabrics – Grab Method
4.2 No. 15-2003 (R2013)	Non-fibrous Materials on Textiles
4.2 No. 18.3-97 (R2010)	Textiles – Tests for Colourfastness – Part B02: Colourfastness to Artificial Light: Xenon Arc Fading Lamp Test
4.2 No. 19.1-2004 (R2013)	Colourfastness to Washing – Accelerated Test
4.2 No. 22-2004 (R2013)	Colourfastness to Rubbing (Crocking)
4.2 No. 23-M90 (R2013)	Colourfastness to Perspiration
4.2 No 29.1-M89	Colourfastness to Dry Cleaning Solvent
4.2 No 30-M90	Dimensional Change in Dry Cleaning
4.2 No 45-M88 (R2013)	Textile Fabrics – Determination of the Recovery from Creasing
4.2 No 51.2-M87	Resistance to Pilling – Random Tumble Pilling Tester
4.2 No 58-2004	Dimensions Change in Domestic Laundering of Textiles
86.1-2003	Care Labelling of Textiles

2.3 **General Services Administration – US Government**
Commercial Item Description

A-A-50199A Thread, Polyester Core, Cotton or Polyester-Covered

2.4 **International Standards Organization (ISO)**

4915:1991 Textiles – Stitch Types – Classification and Terminology

4916:1991 Textiles – Seam Types – Classification and Terminology

2.5 **Royal Canadian Mounted Police**

G.S.1045-258 Cloth, Wool, Fine, Serge.

G.S.1045-278 Cloth, Wool, Superfine.

3. **General Requirements**

3.1 The article or material covered by this specification must be free from material and manufacturing defects that may affect its appearance or serviceability. In all

particulars not covered by this specification or contract documents, production must be equivalent in all respects to the pattern and viewing sample.

- 3.2 **Design** - The Trousers, Blue, Officer are designed with a yellow stripe, with front slash pockets, back welt pockets and a fly front with slide fastener. The Trousers, Blue, Officer must be constructed from material purchased from the RCMP and must conform to the pattern, attached drawings, and viewing sample which are part of this specification.

4. **Detail Requirements**

4.1 **Components**

- 4.1.1 **Shell Material** – The shell material is RCMP stock item number 9300-000, Cloth, Wool, Fine Serge Blue and must be purchased from the RCMP.
- 4.1.2 **Stripes** – The stripes are RCMP stock item number 8705-100, pre-folded yellow wool superfine stripe material, 45 mm wide and must be purchased from the RCMP.
- 4.1.3 **Pocket, Waistband, Fly and Crotch Lining** – The lining must be 65% Polyester/ 35% ± 3% Cotton, black in colour and must meet the requirements outlined in Table I forming part of this specification.
- 4.1.4 **Thread, Seaming, Stitching, Buttonhole and Bar-Tack** – The thread must be polyester wrap, polyester core, Tex 40, Type II of matching colour to the shell material and stripes, meeting U.S. government standard A-A-50199A.
- 4.1.5 **Buttons** – The buttons must be four hole, 15 mm, plastic composition buttons of matching shade.
- 4.1.6 **Slide Fasteners** – The slide fasteners must be a closed ended, brass slide fastener with Y type teeth and a 4.5 mm chain width. The slide fastener must come complete with one bottom stop and a minimum of one top stop. There must be a semi-locking slider with stainless steel locking pin, and brass pull tab. The tape must be comprised of a polyester yarn and must be black in colour. YKK YGC-459½ is known to meet this requirement.

Waist Sizes	Slide Fastener Length (inches)	
	Male	Female
26 - 46 Short	5 ½"	5"
26 - 46 Regular	6"	5 ½"
26 - 46 Tall	6½"	6"

- 4.1.7 **Waistbanding** – The waistbanding must be constructed using waistband lining as specified in Para. 4.1.3 and must have a finished width of 6 cm. The waistbanding must be constructed with the following components, a rubber inner grip, non-woven interlining and a no roll reinforcement, which must meet the requirements below.
- 4.1.7.1 **Rubber Inner Grip** – The rubber inner grip must be narrow mono, 19 mm overall width, with a 6-8 mm rubber at the center. It must be constructed using a leno weave with a warp of 59% polyester/41% rubber and a weft of 100% polyester. The thickness must be 0.5 mm ± .05 mm. The inner grip must meet a colourfastness of grey scale 4 (min.) and be dry cleanable and washable up to 60°C with a maximum shrinkage of 2%.
- 4.1.7.2 **Non-Woven Interlining** – The non-woven interlining must be 90% polyester 10% cellulose wet laid construction treated with a chemical binder. It must have a base weight of 102 g/m² ± 8 g/m² and a tensile strength of MD (machine direction) 1500grams and CD (cross direction) 8000 grams with a thickness of 525 microns ± 5%. It must be washable and dry cleanable with a maximum shrinkage of 2%.
- 4.1.7.3 **No Roll Reinforcement** – The no roll reinforcement must be ultra ban roll, ultra white acrylic finish, 2.5 cm minimum width sewn around the entire waistband, with a thickness of 0.048 cm (0.019"). It must be comprised of a yarn size of 20.5 spun polyester warp and a 750 denier polyester monofilament weft and a weight of 200 g/m² ± 8 g/m². The ban roll must be washable and dry cleanable with a 3% maximum shrinkage.
- 4.1.8 **Hook & Eye** – The hook and eye must be made of steel components, nickel plated on the outside and zinc plated on the inside with a glossy finish. YKK Elite brand part number HE10, HE50, HH10, HH50.
- 4.2 **Size and Dimensions** – Trousers, Blue, Officer's to this specification must be supplied in the sizes specified by the RCMP and to the dimensions given in the scale of measurements and drawings forming part of this specification. The garment components must be shaped, dimensioned and positioned in accordance

with the pattern components and pattern requirements as outlined in Appendix "A" forming part of this specification.

4.3 **Construction**

- 4.3.1 **Cutting** – All component parts of the trousers must be cut from the same piece of material and must be cut following the grain line on the pattern piece to ensure uniformity of shade.
- 4.3.2 **Stitching & Seams** – Using the specified thread, there must be not less than 3 and no more than 4 stitches per cm. All stitching must be lock or lock chain stitch. The beginning and ending of all stitching must be securely backstitched and tacked unless secured by other stitching. Where seaming, turning and stitching are required the edges must be properly worked out before stitching. Side seams and inseams must be constructed in accordance with a plain seam type #1.01.01 and serging type #6.01.01(edge finishing) of ISO 4916:1991.
- 4.3.3 **Inseam & Outseam** – The back leg inseam must have a 3.5 cm wide seam allowance, starting at the crotch, and continuing a minimum length of 40 cm as per the patterns changing to a 1 cm seam allowance towards the hem. Both side seam and inseam allowances must be serged and pressed open.
- 4.3.4 **Hem** – The bottom of the leg must be serged and left unfinished. The completed leg must conform in all respects to the patterns, drawings and viewing sample.
- 4.3.5 **Stripes** – The yellow stripes, specified in Para. 4.1.2, must be centered over the side seam extending from the pocket opening throughout the full length of the leg and stitched using a 1.5 mm gauge, using yellow thread to match the colour of the stripes. The stripes when applied to the trouser leg must be folded in line with the pocket opening following the same angle. Care must be taken to ensure that a crisp sharp edge is achieved with no loose or fraying ends. The stripes when folded under must not have raw edges exposed. The application of the yellow stripes must conform in all respects to the viewing sample.
- 4.3.6 **Waistband** – The face of the waistband when finished must be 4.5 cm wide as per the drawings and the pattern. The waistbanding constructed from materials as specified in Para 4.1.7, when applied to the waistband, must roll inwards 3mm below the top edge. The waistband must be equipped with seven belt loops, positioned as per the scale of measurements. The belt loops must be 1 cm wide with a functional opening of no less than 5 cm. The belt loops must be securely bar

tacked through the shell material and waistband lining, with no less than 18 cover stitches per tack. The top front of the waistband above the fly must be equipped with a metal hook and eye. The hook and eye must be properly supported with a piece of woven interlining on the interior of the waistband. The waistband when completed must conform in all respects to the patterns, drawings and viewing sample.

- 4.3.7 **Pockets** – The trousers must have two front slash pockets and two back welt pockets, shaped and dimensioned as per the patterns and drawings. They must be bar tacked at each end of the openings with no less than 18 cover stitches per tack. The front slash pocket openings must be must be reinforced with a stabilizing tape. Both front and back pockets must be lined with material as specified in Para. 4.1.3. The back pockets must have a 15 cm opening for all male sizes and 14 cm opening for all female sizes. Both rear pockets must be equipped with a button as specified in Para. 4.1.5 and a suitably sized button hole.
- 4.3.8 **Fly Opening** – The fly front, lined with material specified in Para. 4.1.3, must be equipped with a slide fastener in accordance with Para. 4.1.6. The fly front must be supported by a button sewn to the underside of the top left portion of the opening with a corresponding buttonhole applied to the curtain. The end of the fly curtain, extending below the bottom of the fly opening, must be tacked to the fly facing. Care must be taken to ensure that no shell material is caught during this operation. The bottom of the fly opening must be reinforced with a 10 mm to 13 mm long bar tack, with no less than 18 cover stitches. The completed fly opening, must conform in all respects to the patterns, drawings and viewing sample.
- 4.3.9 **Buttonholes** – Buttonholes must be eyelet type, gimp reinforced, with a bar tacked or fish-tailed end and having a minimum of 28 stitches per inch or 11.2 stitches per centimetre. The buttonholes may be “cut first” or “cut after”, dimensioned to fit a button as specified in 4.1.5. When “cut after” buttonholes are used, the cut must be clean, close to the stitches so they are equal in appearance to the “cut first” buttonholes.
- 4.3.10 **Crotch Lining** – The forepart of the crotch must be lined with a triangular piece of lining as specified in Para. 4.1.3, shaped and dimensioned in accordance with the patterns, drawing and viewing sample.
- 4.3.11 **Crotch and Seat Seam** – The crotch and seat seam must be joined together by stitching the seat seam continuously from the crotch through the waistband using 401 lockchain stitch. The finish of the waistband must allow for alterations of the

waistband to be performed without opening the waistband. The seam allowance must be 1 cm at the crotch, widening gradually to 4.5 cm below the bottom of the waistband and continuing through the waistband with a completed width of 4 cm each side after seaming and turning. All seams must be serged. The seat when finished must conform in all respects to the patterns, drawings and viewing sample.

4.3.12 **Pressing and Shaping** – The trousers must be pressed and shaped in accordance with good commercial practice to conform with the shaping and style of the viewing sample.

4.3.13 **Marking & Cleaning Instructions and Identification Labels** – Each trouser must have two labels sewn separately to the right front pocket bag as identified in drawing # 3. The marking and cleaning label must be no less than 7.5 cm x 6.5 cm. The identification label must be no less than 7.5 cm x 2 cm. The label information must be as outlined below in a text no less than a size 8 font. The text must be of permanent inks of a contrasting colour lasting the life of the garment and showing no apparent change in appearance. The label must contain the following information in English and French.

1. Item name in English as written in Para. 1.1
2. Item name in French as written in Para. 1.1
3. RCMP stock number - reference contract documents. (Ex. 4900 000)
4. Size and height group of the article, combining the size designation referenced in the English and French contract documents. (Ex. 34 T/L)
5. Date of manufacture, in numeric format year/month (Ex. 2001/11)
6. Your manufacturer identification (Company name or number).
7. Print information as shown below.

1		
2		
3		
4		
5		
6		
7	DRY CLEAN ONLY.	NETTOYER À SEC SEULEMENT.
	Steam iron – medium	Repasser à la vapeur – à température moyenne

Identification label (Sewn on only): As illustrated below.

Name/Nom:

Note: The manufacturer's identification must not appear anywhere on the garment except on the garment label as indicated.

5. **Quality Assurance Provisions**

- 5.1 **Responsibility for Inspection** - Unless otherwise stipulated in the contract, it is the prime contractor's responsibility to satisfy the RCMP, Uniform and Equipment Program that the material and services being supplied conform to this specification. This may be accomplished by performing the tests specified in this specification or by demonstrating to the satisfaction of the RCMP, Uniform and Equipment Program that conformity to this specification of manufacturing processes is assured. The contractor must use any independent, North American, ISO 9001 certified and ISO 17025 "Textile" certified testing facilities. Certification will be required.
- 5.2 The RCMP, Uniform and Equipment Program reserves the right to perform any inspection considered necessary to ensure the material and services conform to the specified requirements. For the purpose of inspection, a portion of each delivery not exceeding two percent or two out of any number delivered under 100 may be put to tests that could destroy the articles. If found to be inferior or not in accordance with this specification, all articles so destroyed must be replaced by others of proper quality and pattern at the expense of the contractor. The entire delivery may also be rejected if it is found that articles previously rejected due to non-repairable defects are redelivered for inspection.
- 5.3 The contractor will be promptly notified when any articles are not accepted and such articles will be returned at the contractor's risk and expense.

6. **Scale of Measurement Definitions and Location References**

(Refer to the Scale of Measurements and Drawing No. 4).

- 6.1 **Waist Circumference (total circumference)** - When the waistband is closed, the waist measurement is the total circumference from centre front to centre front at the centre of the waistband. (A).
- 6.2 **Seat Circumference (total circumference)** - When placed flat, fly facing up, the seat is measured across the width of the trouser at the distance specified in the drawing from the bottom of the waistband. The result must be doubled to measure total circumference. (B).
- 6.3 **Inseam Length** - The length is the distance measured from the crotch to the unfinished hem. (C).
- 6.4 **Outseam Length** - The length is the distance measured from the top of the waistband to the unfinished hem. (D).
- 6.5 **Front Rise** - The measurement from the crotch to the top of the front waistband along the seam. (E).
- 6.6 **Back Rise** - The measurement from the crotch to the top of the back waistband along the seam. (F).
- 6.7 **Bottom Circumference (total circumference)** - When placed flat, the bottom is measured across the width at the bottom of leg. The result must be doubled to measure total circumference. (G).

SCALE OF MEASUREMENTS - TROUSERS, BLUE, OFFICER - MALE SIZES

SIZE DESIGNATION		GARMENT MEASUREMENTS						
Rise	Size (Inches)	Waist	Seat	Inseam	Outseam - <u>Top of Waistband to Hem</u>	Front Rise	Back Rise	Bottom
<u>SHORT RISE</u>	30 S	77.5	102	86.40	112.5	29.8	39.4	46.9
	32 S	82.5	106	86.45	113.0	30.0	40.0	47.5
	34 S	87.5	110	86.50	113.5	30.2	40.6	48.2
	36 S	92.5	114	86.55	114.0	30.4	41.2	48.9
	38 S	97.5	118	86.60	114.5	30.6	41.8	49.5
	40 S	102.5	122	86.65	115.0	30.8	42.4	50.2
	42 S	107.5	126	86.70	115.5	31.0	43.0	50.9
	44 S	112.5	130	86.75	116.0	31.3	43.6	51.5
<u>REGULAR RISE</u>	46 S	117.5	134	86.80	116.5	31.5	44.2	52.2
	30 R	77.5	102	91.40	119.5	31.4	41.0	46.9
	32 R	82.5	106	91.45	120.0	31.6	41.6	47.5
	34 R	87.5	110	91.50	120.5	31.8	42.2	48.2
	36 R	92.5	114	91.55	121.0	32.0	42.8	48.9
	38 R	97.5	118	91.60	121.5	32.2	43.4	49.5
	40 R	102.5	122	91.65	122.0	32.4	44.0	50.2
	42 R	107.5	126	91.70	122.5	32.7	44.6	50.9
44 R	112.5	130	91.75	123.0	33.0	45.2	51.5	
46 R	117.5	134	91.80	123.5	33.2	45.8	52.2	
MEASUREMENT LOCATION		A	B	C	D	E	F	G
TOLERANCES ±		1 cm	1 cm	1.5 cm	1.5 cm	1 cm	1 cm	1 cm

NOTE: All measurements are in centimetres unless otherwise indicated.

SCALE OF MEASUREMENTS - TROUSERS, BLUE, OFFICER - MALE SIZES

SIZE DESIGNATION		GARMENT MEASUREMENTS						
Rise	Size (Inches)	Waist	Seat	Inseam	Outseam - <u>Top of Waistband to Hem</u>	Front Rise	Back Rise	Bottom
<u>TALL RISE</u>	30 T	77.5	102	96.40	126.5	33.0	42.7	46.9
	32 T	82.5	106	96.45	127.0	33.2	43.3	47.5
	34 T	87.5	110	96.50	127.5	33.4	43.9	48.2
	36 T	92.5	114	96.55	128.0	33.6	44.6	48.9
	38 T	97.5	118	96.60	128.5	33.8	45.2	49.5
	40 T	102.5	122	96.65	129.0	34.0	45.8	50.2
	42 T	107.5	126	96.70	129.5	34.3	46.4	50.9
	44 T	112.5	130	96.75	130.0	34.6	47.0	51.5
	46 T	117.5	134	96.80	130.5	34.8	47.6	52.2
MEASUREMENT LOCATION		A	B	C	D	E	F	G
TOLERANCES ±		1 cm	1 cm	1.5 cm	1.5 cm	1 cm	1 cm	1 cm

NOTE: All measurements are in centimetres unless otherwise indicated.

SCALE OF MEASUREMENTS TROUSERS, BLUE, OFFICER - FEMALE SIZES

SIZE DESIGNATION		GARMENT MEASUREMENTS						
Rise	Size (Inches)	Waist	Seat	Inseam	Outseam - <u>Top of Waistband to Hem</u>	Front Rise	Back Rise	Bottom
<u>SHORT RISE</u>	26 S	67.5	93.8	83.20	110.0	29.0	34.7	44.5
	28 S	72.5	98.4	83.25	110.5	29.3	35.3	45.1
	30 S	77.5	103.0	83.30	111.0	29.6	35.9	45.8
	32 S	82.5	107.6	83.35	111.5	29.9	36.5	46.5
	34 S	87.5	112.2	83.40	112.0	30.2	37.1	47.1
	36 S	92.5	116.8	83.45	112.5	30.5	37.7	47.8
	38 S	97.5	121.4	83.50	113.0	30.8	38.3	48.5
	40 S	102.5	126	83.55	113.5	31.1	38.9	49.1
	42 S	107.5	130.6	83.60	114.0	31.4	39.5	49.8
<u>REGULAR RISE</u>	26 R	67.5	93.8	88.20	117.0	30.9	36.4	44.5
	28 R	72.5	98.4	88.25	117.5	31.2	37.0	45.1
	30 R	77.5	103.0	88.30	118.0	31.5	37.6	45.8
	32 R	82.5	107.6	88.35	118.5	31.8	38.2	46.5
	34 R	87.5	112.2	88.40	119.0	32.1	38.8	47.1
	36 R	92.5	116.8	88.45	119.5	32.4	39.4	47.8
	38 R	97.5	121.4	88.50	120.0	32.7	40	48.5
	40 R	102.5	126	88.55	120.5	33.0	40.6	49.1
	42 R	107.5	130.6	88.60	121.0	33.3	41.2	49.8
MEASUREMENT LOCATION		A	B	C	D	E	F	G
TOLERANCES ±		1 cm	1 cm	1.5 cm	1.5 cm	1 cm	1 cm	1 cm

NOTE: All measurements are in centimetre unless otherwise indicated.

SCALE OF MEASUREMENTS - TROUSERS, BLUE, OFFICER - FEMALE

SIZE DESIGNATION		GARMENT MEASUREMENTS						
Rise	Size (Inches)	Waist	Seat	Inseam	Outseam - <u>Top of Waistband to Hem</u>	Front Rise	Back Rise	Bottom
<u>TALL RISE</u>	26 T	67.5	93.8	93.15	124.0	32.8	38.2	44.5
	28 T	72.5	98.4	93.20	124.5	33.1	38.8	45.1
	30 T	77.5	103.0	93.25	125.0	33.4	39.4	45.8
	32 T	82.5	107.6	93.30	125.5	33.7	40.0	46.5
	34 T	87.5	112.2	93.35	126.0	34.0	40.6	47.1
	36 T	92.5	116.8	93.40	126.5	34.3	41.2	47.8
	38 T	97.5	121.4	93.45	127.0	34.6	41.8	48.5
	40 T	102.5	126	93.50	127.5	34.9	42.4	49.1
	42 T	107.5	130.6	93.55	128	35.2	43.0	49.8
MEASUREMENT LOCATION		A	B	C	D	E	F	G
TOLERANCES ±		1 cm	1 cm	1.5 cm	1.5 cm	1 cm	1 cm	1 cm

NOTE: All measurements are in centimetres unless otherwise indicated.

SCALE OF MEASUREMENTS - TROUSERS, BLUE, OFFICER

SIZE DESIGNATION	Belt Loop placement Measured to the centre of the Belt Loop			
	1st Belt Loops from centre front (cm)	2nd Belt Loops from centre front (cm)	3rd Belt Loops from centre front (cm)	Last Beltloop
MALE Sizes				
30	7	Centred over side seam	29.75	Placed over centre back seam
32	8		31.5	
34	9		33.25	
36	10		35.5	
38	11		37.25	
40	12		39	
42	13		41.25	
44	14		43	
46	15		44.75	
FEMALE Sizes				
26	6.5	Centred over side seam	27	Placed over centre back seam
28	7.5		28.75	
30	8.5		30.5	
32	10		32.25	
34	11		34	
36	12		35.75	
38	13		37.5	
40	14		39.25	
42	15		41	
TOLERANCES ±	.25 cm		.25 cm	

TABLE I
Pocket, Waistband, Fly and Crotch Lining

		Requirement		Test Method
1	Weave	Plain		Visual
2	Mass	150 to 170 g/m ²		<ul style="list-style-type: none"> • CAN/CGSB 4.2 No. 5.1-M90 (R2013)
3	Yarns per cm	Warp	39 (min.)	<ul style="list-style-type: none"> • CAN/CGSB 4.2 No. 6-2013
		Weft	21 (min.)	
4	Breaking Strength	Warp	537 Newtons (min.)	<ul style="list-style-type: none"> • CAN/CGSB 4.2 No. 9.2-M90 (R2013)
		Weft	220 Newtons (min.)	
5	Dimensional Change in Dry Cleaning	Warp	2% (max.)	<ul style="list-style-type: none"> • CAN/CGSB 4.2 No. 30-M90
		Weft	2% (max.)	
6	Colourfastness to Dry Cleaning Solvent	Colour Change	Grey Scale 4 or better	<ul style="list-style-type: none"> • CAN/CGSB 4.2 No. 29.1-M89
		Colour Staining	Grey Scale 4 or better	
7	Colourfastness to Light	Equal to AATCC Standard L4 or better		<ul style="list-style-type: none"> • CAN/CGSB 4.2 No. 18.3-97 (R2010)
8	Colourfastness to Perspiration	Colour Change	Grey Scale 4 or better	<ul style="list-style-type: none"> • CAN/CGSB 4.2 No. 23-M90 (R2013)
		Colour Staining	Grey Scale 4 or better	
9	Colourfastness to Crocking	Dry	Grey Scale 4 or better	<ul style="list-style-type: none"> • CAN/CGSB 4.2 No. 22-2004 (R2013)
		Wet	Grey Scale 4 or better	
10	Pilling	3 (min.) after 90 min		<ul style="list-style-type: none"> • CAN/CGSB 4.2 No. 51.2-M87
11	Crease Recovery	70%		<ul style="list-style-type: none"> • CAN/CGSB 4.2 No. 45-M88 (R2013)
12	Non-Fibrous Material	3.1% (max.)		<ul style="list-style-type: none"> • CAN/CGSB 4.2 No. 15-2003 (R2013)

APPENDIX A

Sealed Pattern Identifier

Pattern #: 1045-264
 Titles: Trousers, Blue, Officer, Male
 Trousers, Blue, Officer, Female

Paper Patterns - Paper patterns are available from the RCMP, Uniform and Equipment Program, Ottawa Ontario, under Pattern # G.S. 1045-264 Trousers, Blue, Officer's - Male & G.S. 1045-264 Trousers, Blue, Officer's - Female. Firms requested to produce Pre-contract Award Samples will be provided with the base pattern only. The full set of patterns either in individual sizes or as a graded nest will be provided to the successful bidder after the contract is awarded.

The paper patterns include seam allowances, drill holes and/or placement templates. Contractors may make changes required to suit their production process, however, the design and grade must not be affected or changed.

All shell parts must be cut in the direction indicated on the grain line of the pattern pieces.

All patterns are the property of the RCMP and must be returned upon completion of the contract.

Pattern Pieces - This design has 14 pattern components.

<u>Legend:</u>	
Shell Material	= Para. 4.1.1
Lining Material	= Para. 4.1.3
Cut 1 Single	= Cut 1
Cut 1 Paired	= Cut 2
(RSU)	= Right Side Up

APPENDIX A

Pattern #: G.S. 1045-264
 Title: Trousers, Blue, Officer - Male

Pattern Components	Nomenclature	Quantity to be cut	Material
# 1 of 14	Back	1 Paired	Shell Material
# 2 of 14	Front	1 Paired	Shell Material
# 3 of 14	Waistband - Right	1 Single	Shell Material (RSU)
# 4 of 14	Waistband - Left	1 Single	Shell Material (RSU)
# 5 of 14	Fly Front	1 Single	Shell Material (RSU)
# 6 of 14	Fly Curtain	1 Single	Shell Material (RSU)
# 7 of 14	Belt Loops	1 Single	Shell Material
# 8 of 14	Pocket Bag - Front Facing	1 Paired	Shell Material
# 9 of 14	Pocket Jetting	1 Paired	Shell Material
#10 of 14	Pocket Bag - Front	1 Paired	Lining Material
#11 of 14	Fly Lining	1 Single	Lining Material (RSU)
#12 of 14	Front Gusset	1 Paired	Lining Material
#13 of 14	Pocket Bag - Back	1 Paired	Lining Material
#14 of 14	Pocket - Front Facing	1 Paired	Shell Material

APPENDIX A

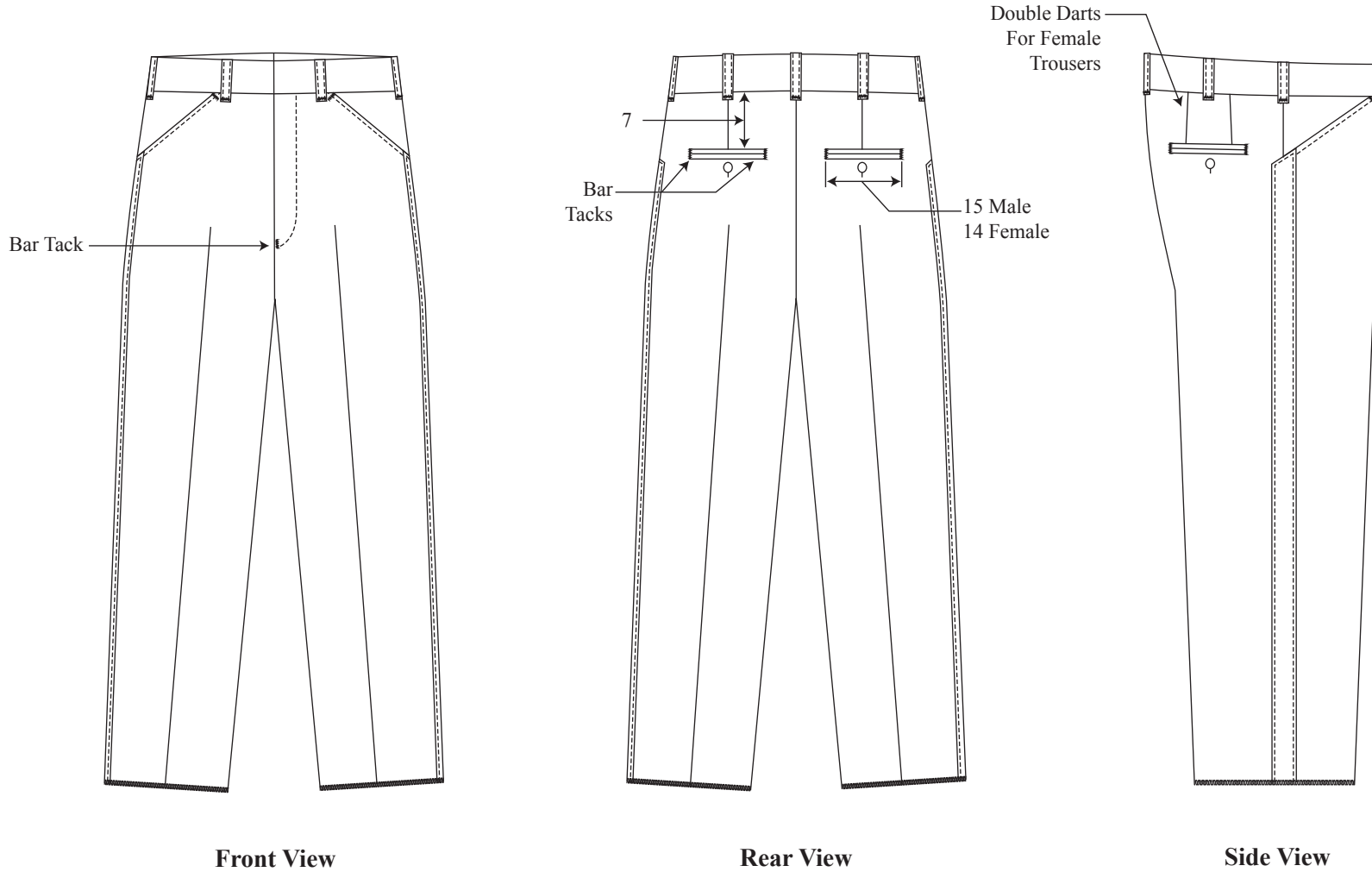
Pattern #: G.S. 1045-264
 Title: Trousers, Blue, Officer - Female

Pattern Components	Nomenclature	Quantity to be cut	Material
# 1 of 14	Back	1 Paired	Shell Material
# 2 of 14	Front	1 Paired	Shell Material
# 3 of 14	Waistband - Right	1 Single	Shell Material (RSU)
# 4 of 14	Waistband - Left	1 Single	Shell Material (RSU)
# 5 of 14	Fly Front	1 Single	Shell Material (RSU)
# 6 of 14	Fly Curtain	1 Single	Shell Material (RSU)
# 7 of 14	Belt Loops	1 Single	Shell Material
# 8 of 14	Pocket Bag - Front Facing	1 Paired	Shell Material
# 9 of 14	Pocket Jetting	1 Paired	Shell Material
#10 of 14	Pocket Bag - Front	1 Paired	Lining Material
#11 of 14	Fly Lining	1 Single	Lining Material (RSU)
#12 of 14	Front Gusset	1 Paired	Lining Material
#13 of 14	Pocket Bag - Back	1 Paired	Lining Material
#14 of 14	Pocket - Front Facing	1 Paired	Shell Material

Drawing 1

G.S. 1045 - 264

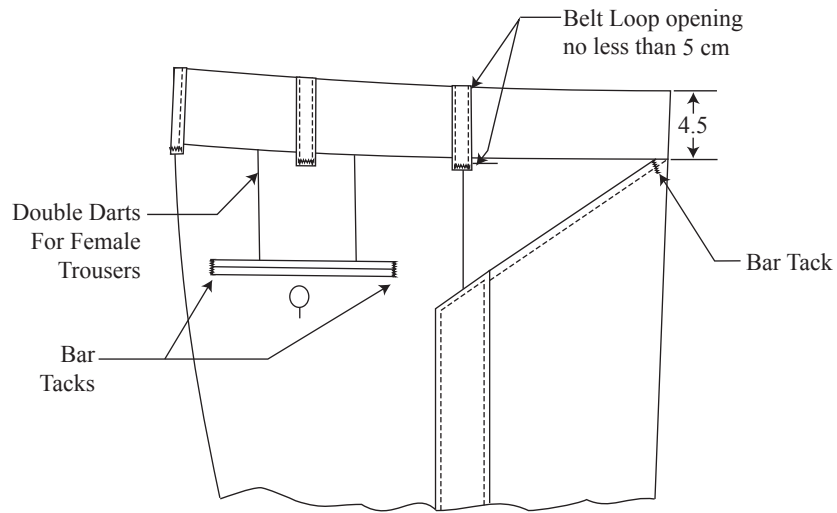
Trousers, Blue, Officer's, Male and Female



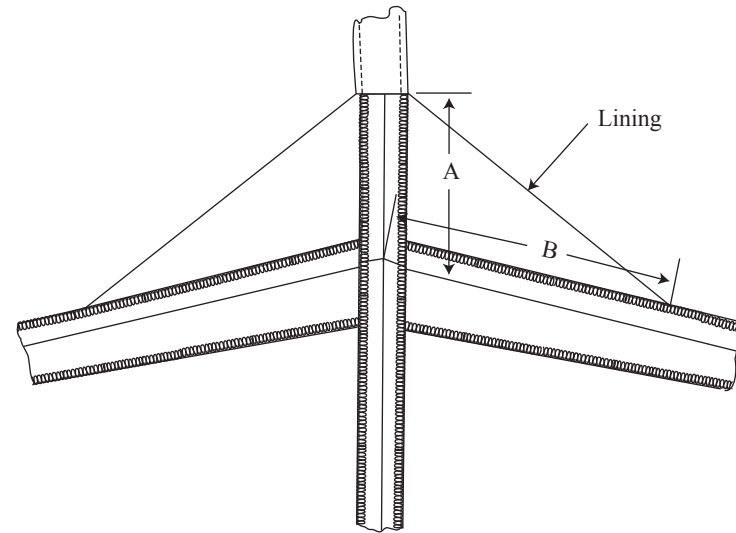
NOT TO SCALE
All measurements are shown in centimeters.
± 0.5 cm tolerance acceptable unless otherwise indicated.

Drawing 2

Trousers, Blue, Officer's, Male and Female



Pocket Detail



Crotch Detail

Crotch Detail	A	B
Male	7 cm	12 cm
Female	6 cm	11.5 cm

NOT TO SCALE

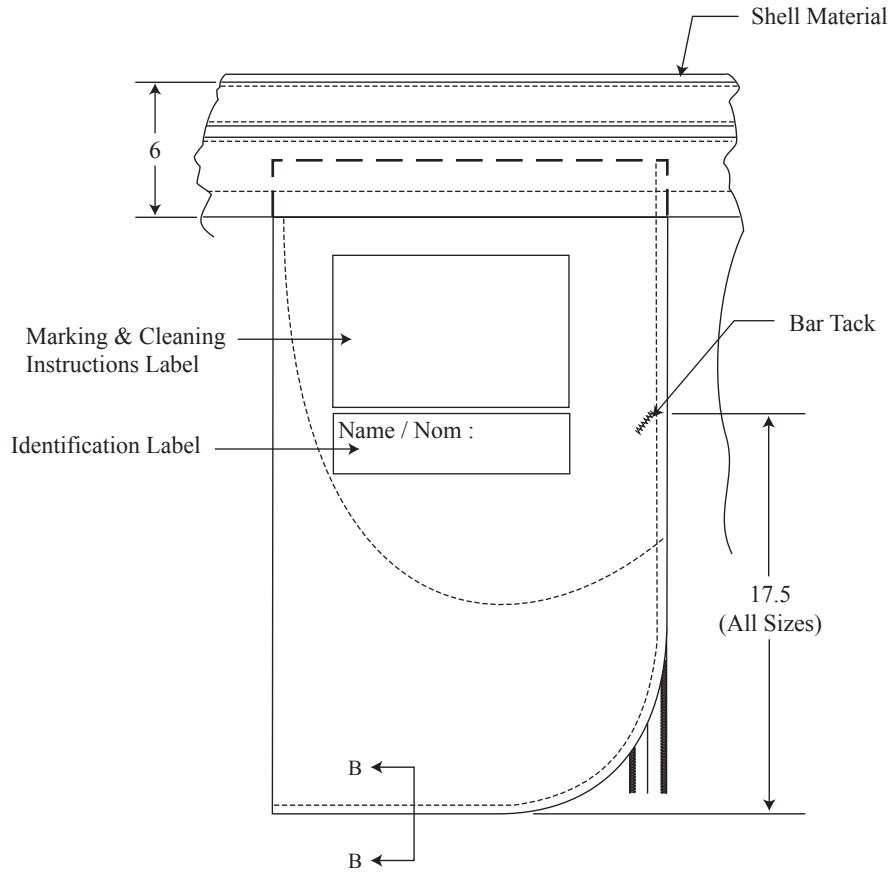
All measurements are shown in centimeters.

± 0.5 cm tolerance acceptable unless otherwise indicated.

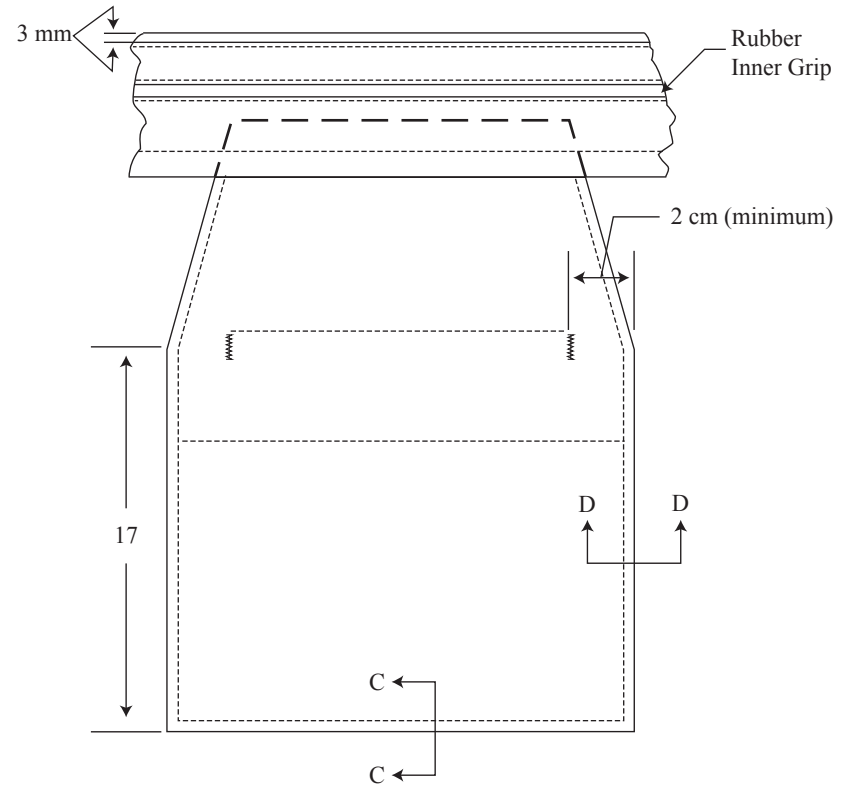
Drawing 3

G.S. 1045 - 264

Trousers, Blue, Officer's, Male and Female



Front Pocket Detail



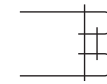
Back Hip Pocket Detail



Section B-B



Section C-C



Section D-D

NOT TO SCALE

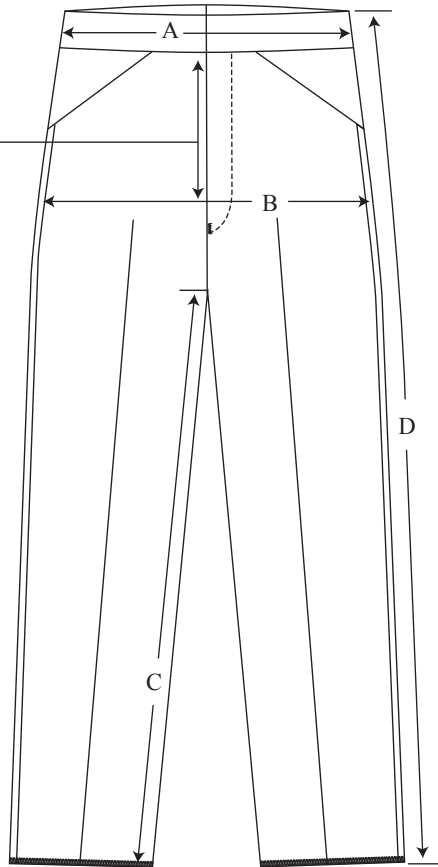
All measurements are shown in centimeters.

± 0.5 cm tolerance acceptable unless otherwise indicated.

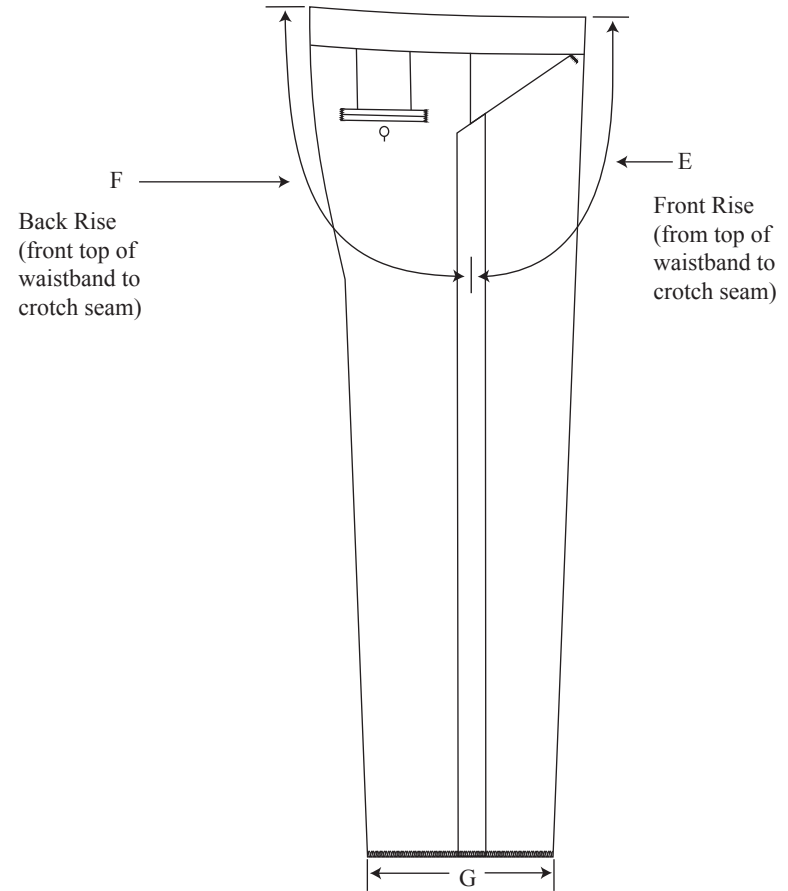
Drawing 4

Measurement Location Chart

Male Trousers
Short - 14.2 cm (5 1/2")
Reg - 15.5 cm (6")
Tall - 16.8 cm (6 1/2")
Female Trousers
Short - 13.3 cm (5 1/4")
Reg - 14.6 cm (5 3/4")
Tall - 15.9 cm (6 1/4")



Front View



Side View

NOT TO SCALE

All measurements are shown in centimeters.

± 0.5 cm tolerance acceptable unless otherwise indicated.