



Fisheries and Oceans
Canada

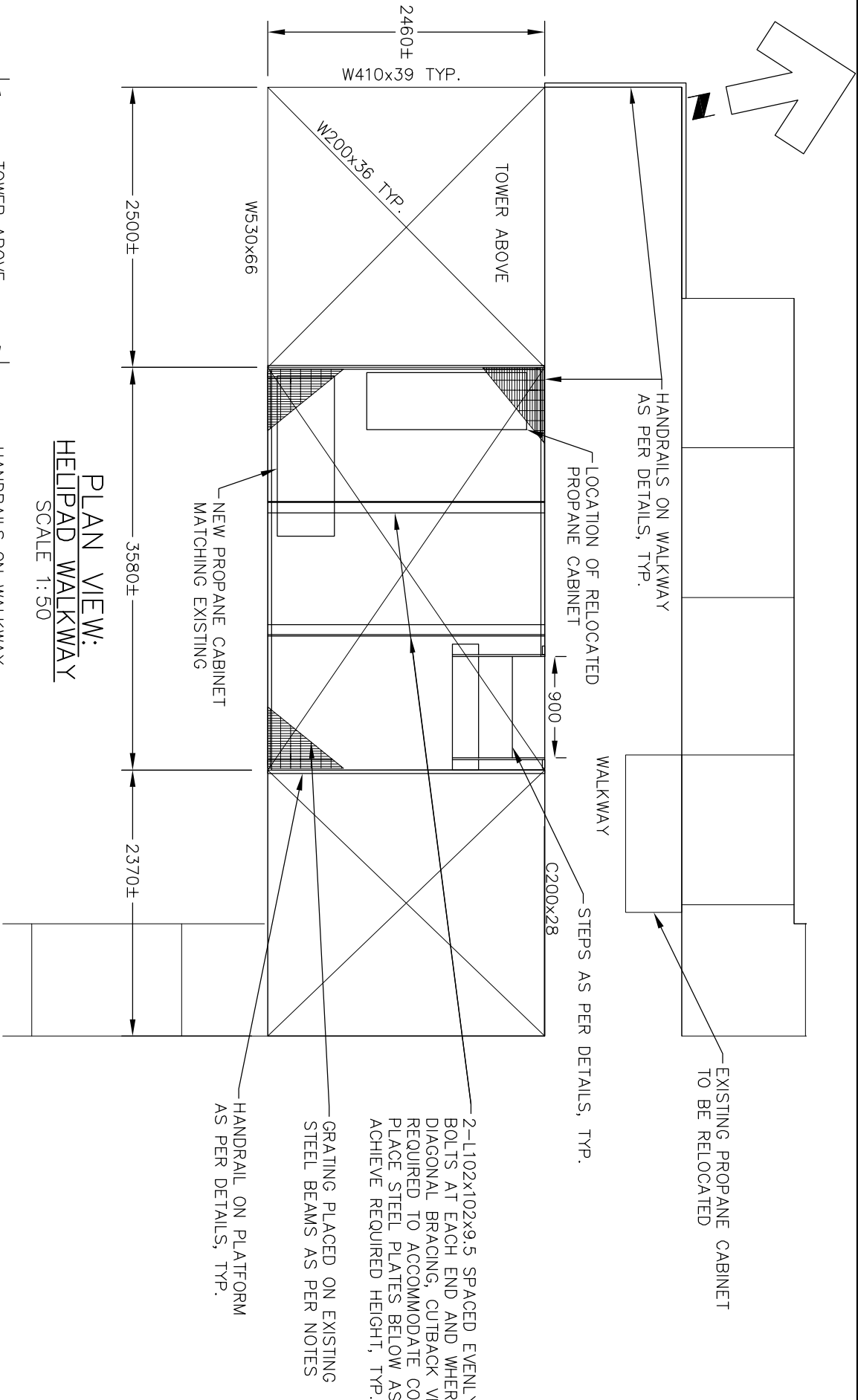
Pêches et Océans
Canada

Canadian
Coast Guard

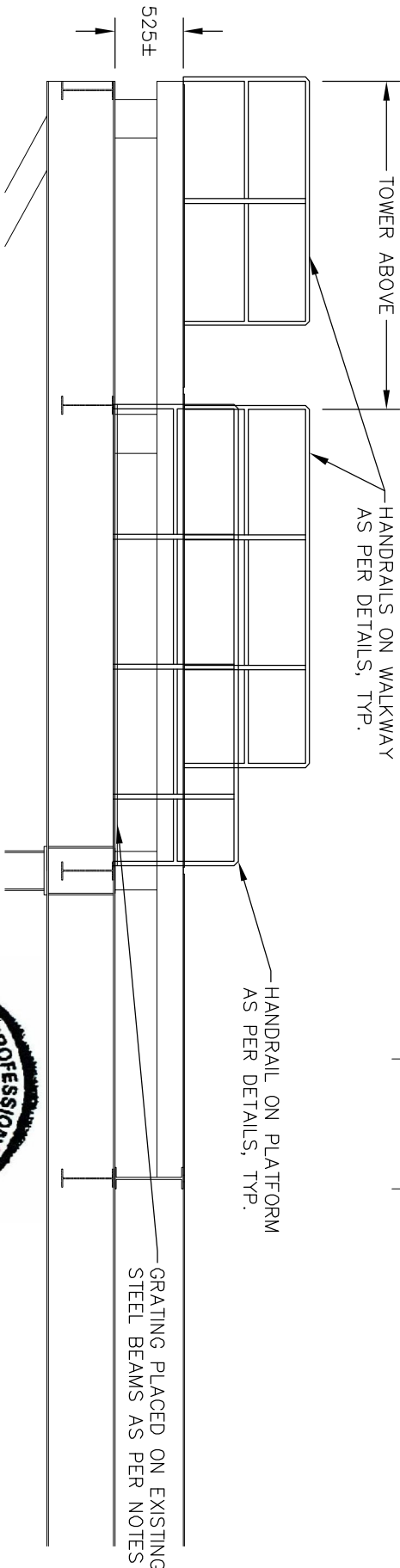
Garde côtière
canadienne



ANNEX C– CONTRACT DRAWINGS



PLAN VIEW:
HELIPAD WALKWAY
SCALE 1:50



ELEVATION VIEW:
HELIPAD WALKWAY
SCALE 1:50



Design By: J.P.J.

Checked By: A.I.R.



Department of Fisheries
and Oceans Canada

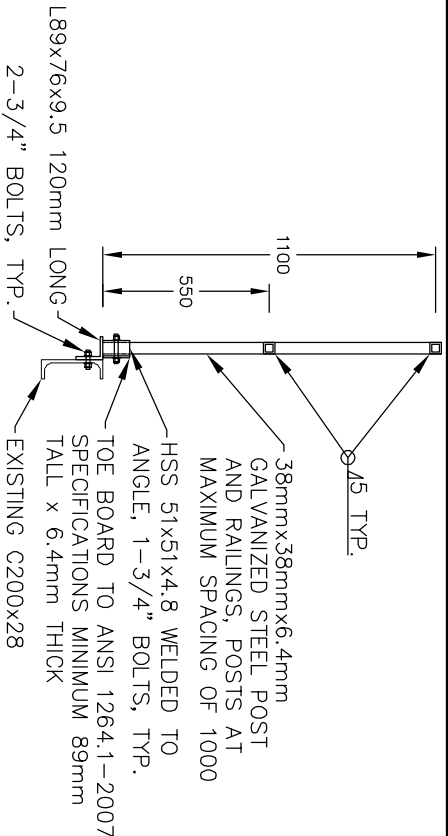
LL620 Helipad
Details

Date
March 6, 2019

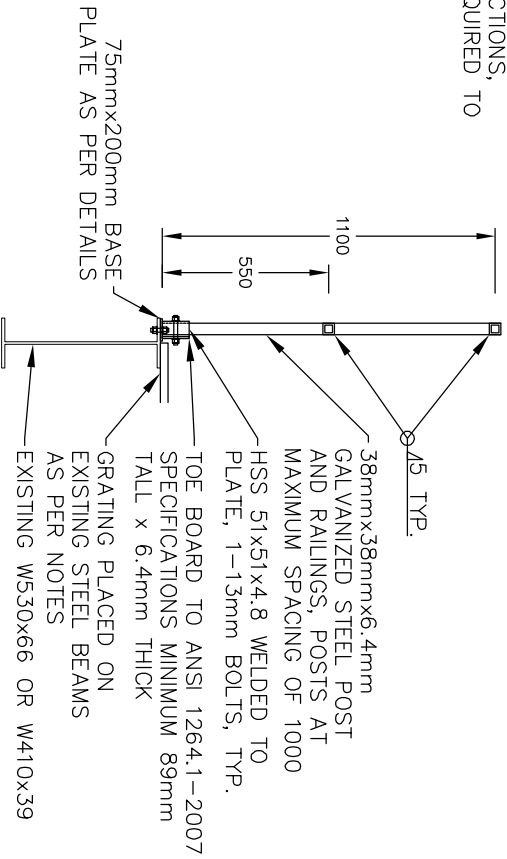
PROJECT No
18291

SCALE
As Shown

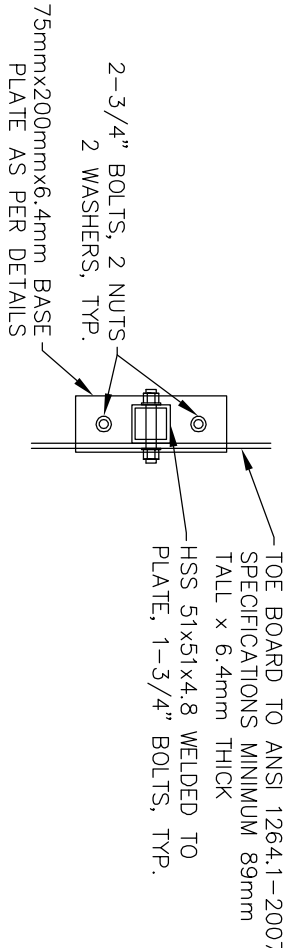
DRAWING No
2 of 2



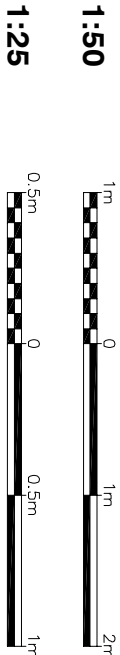
RAILING DETAIL
ON WALKWAY
SCALE 1:25



RAILING DETAIL
ON PLATFORM
SCALE 1:25

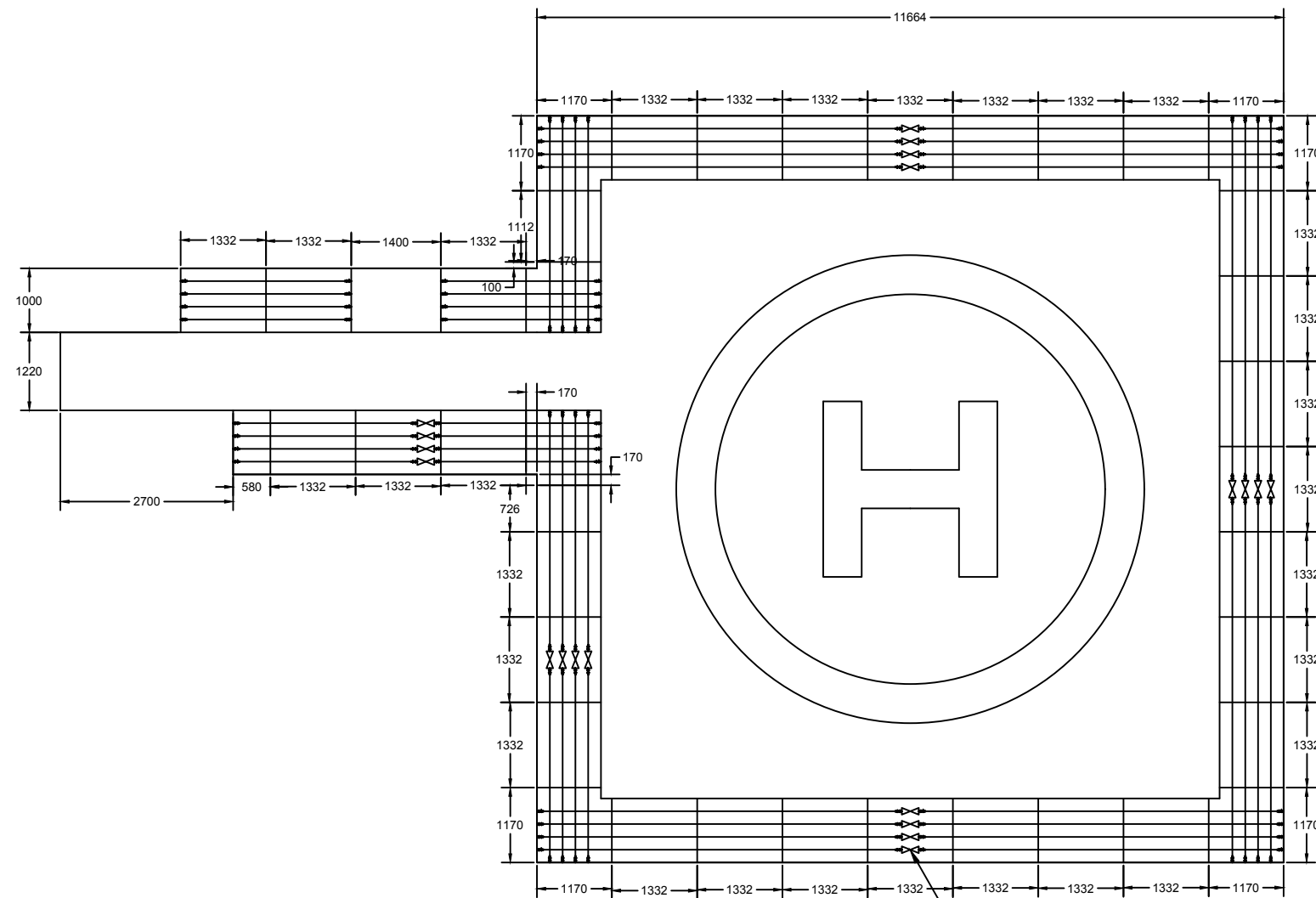


RAILING BASE PLATE
PLATFORM
SCALE 1:10

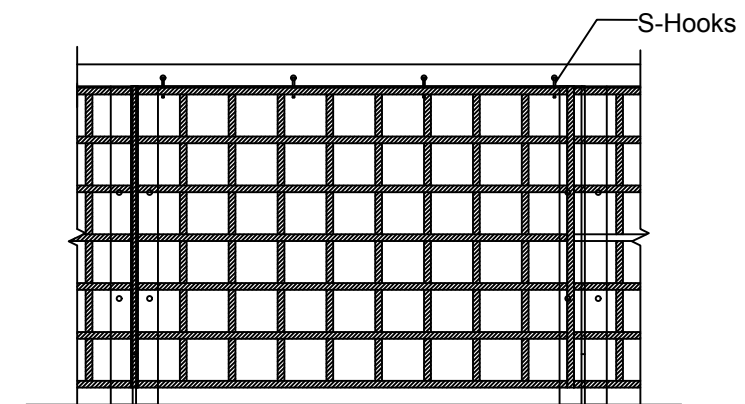




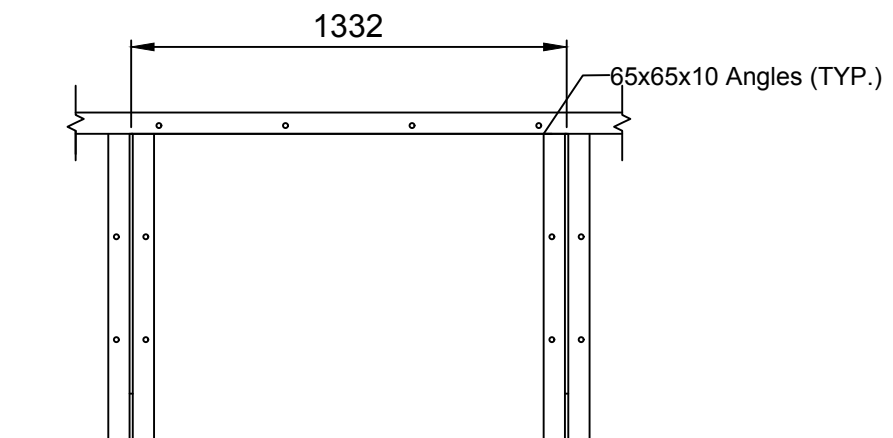
Vendor / Sous-traitant



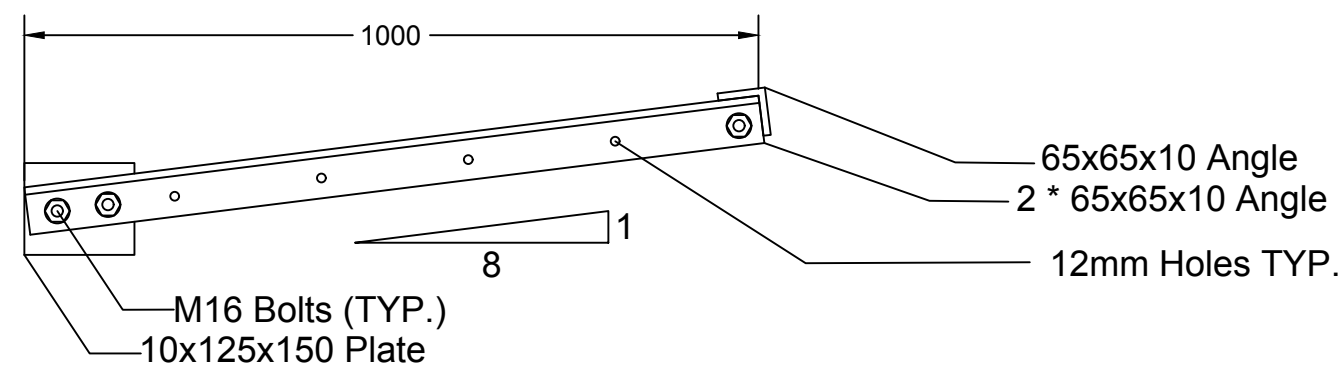
1 Helipad Safety Net Framing Layout



3 Safety Net Orientation

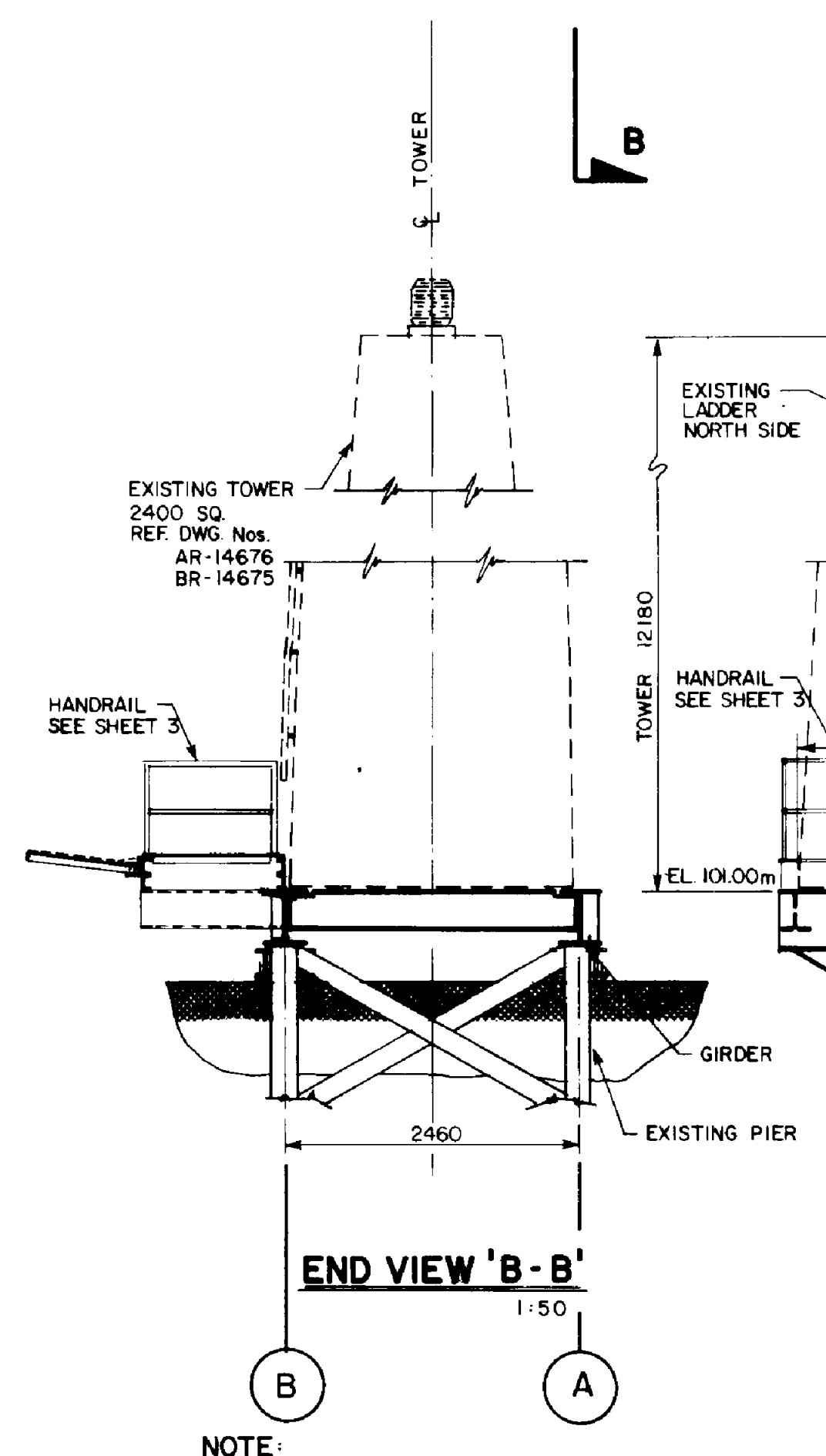
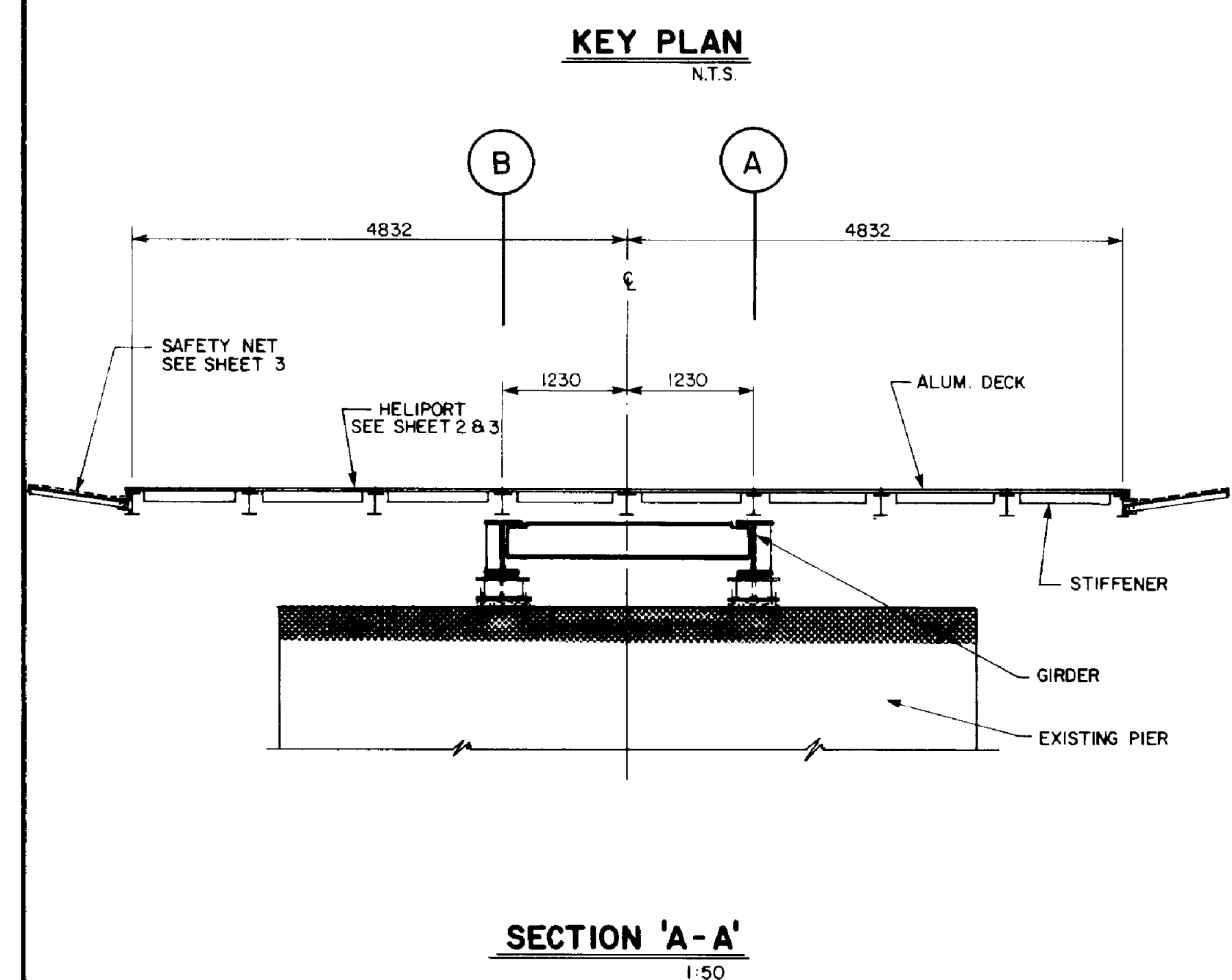
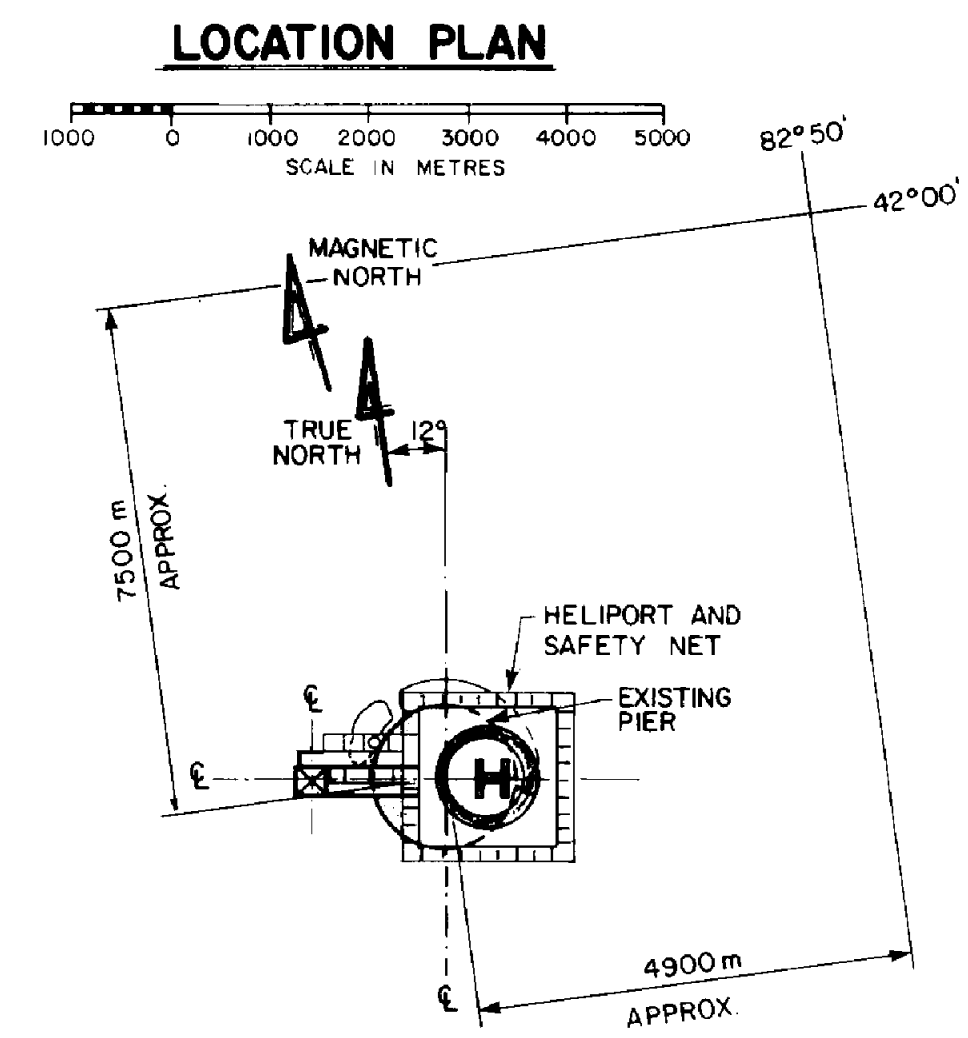
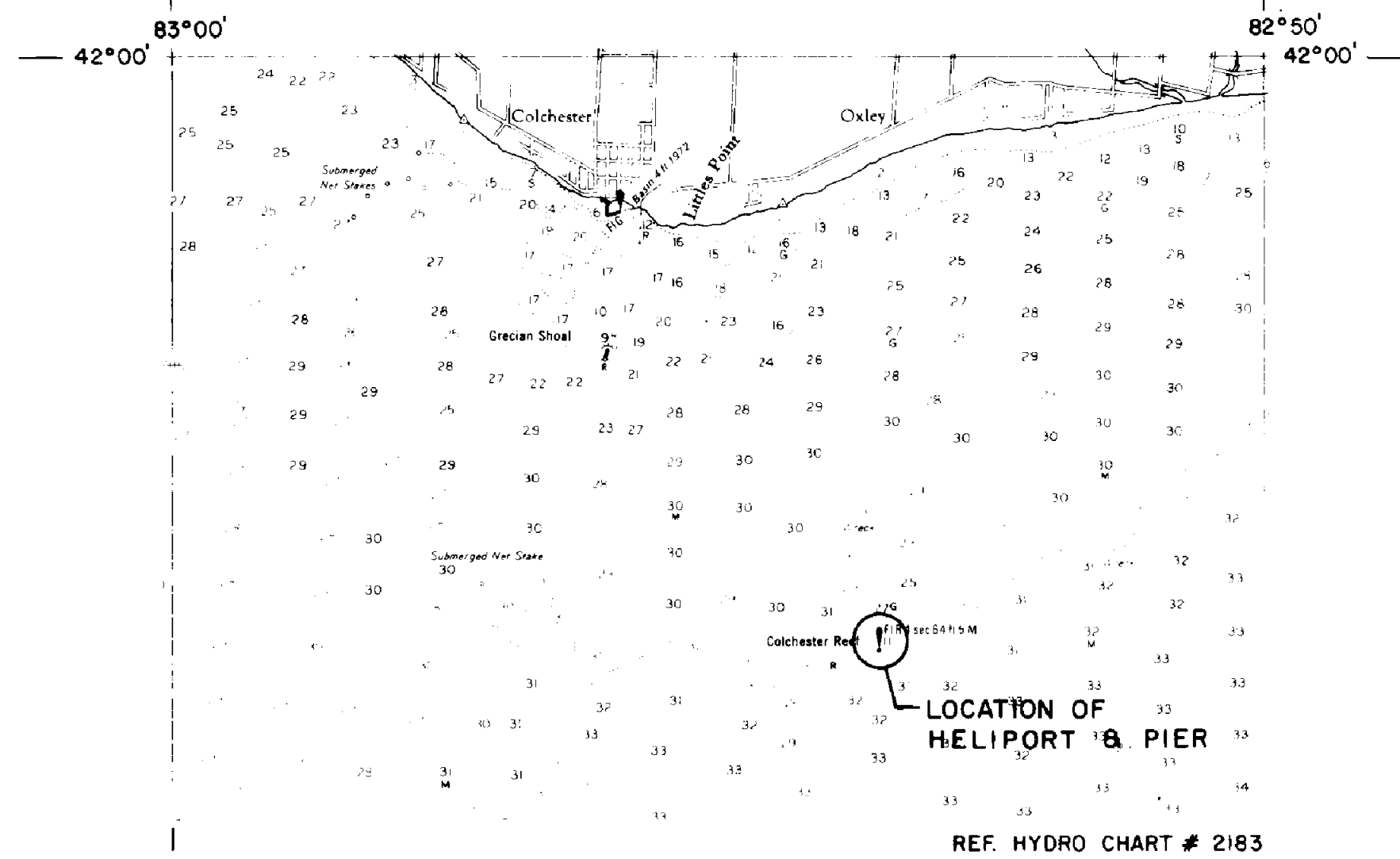


4 Typical Safety Net Framing Detail

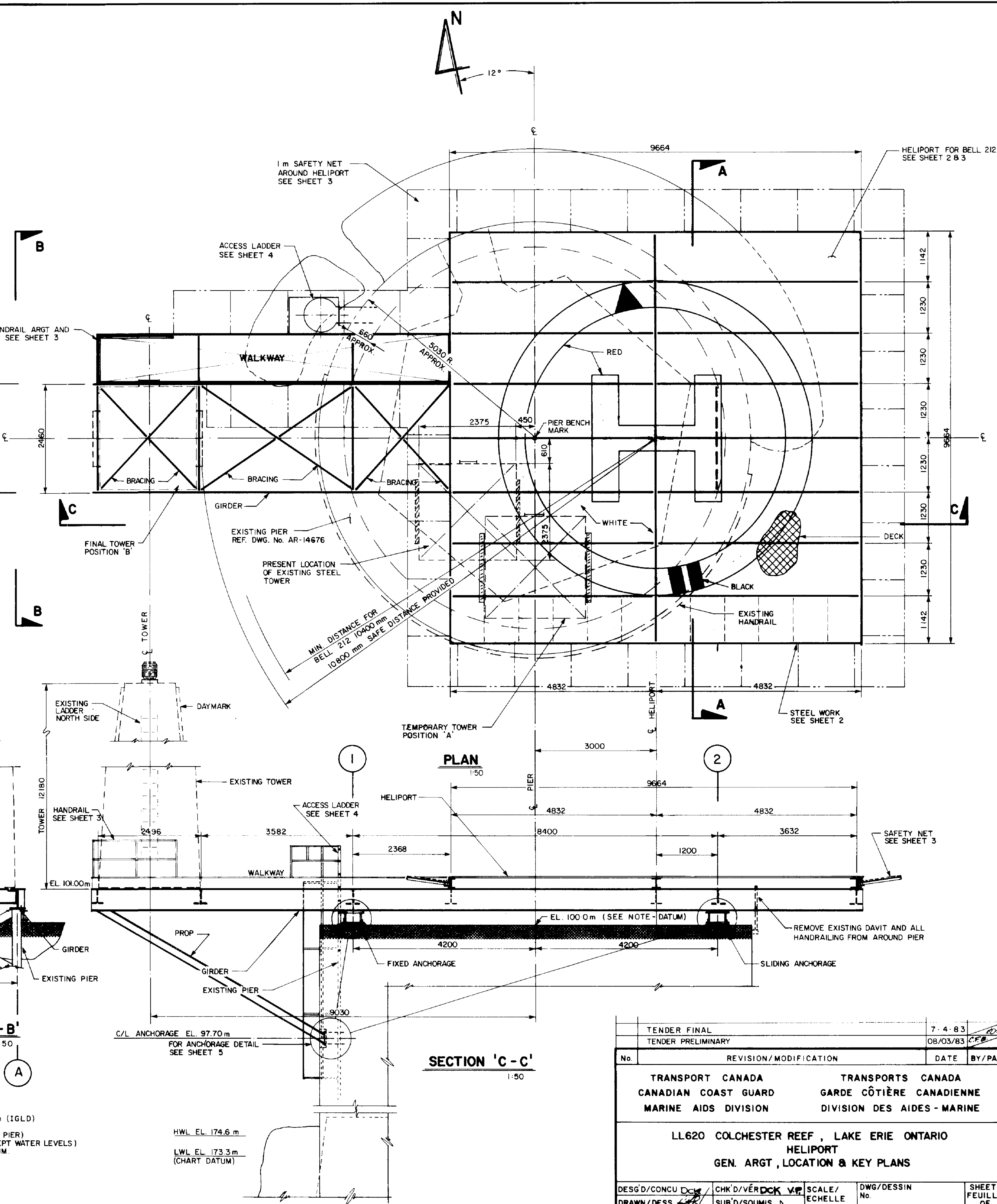


2 Typical Angle Connection Detail

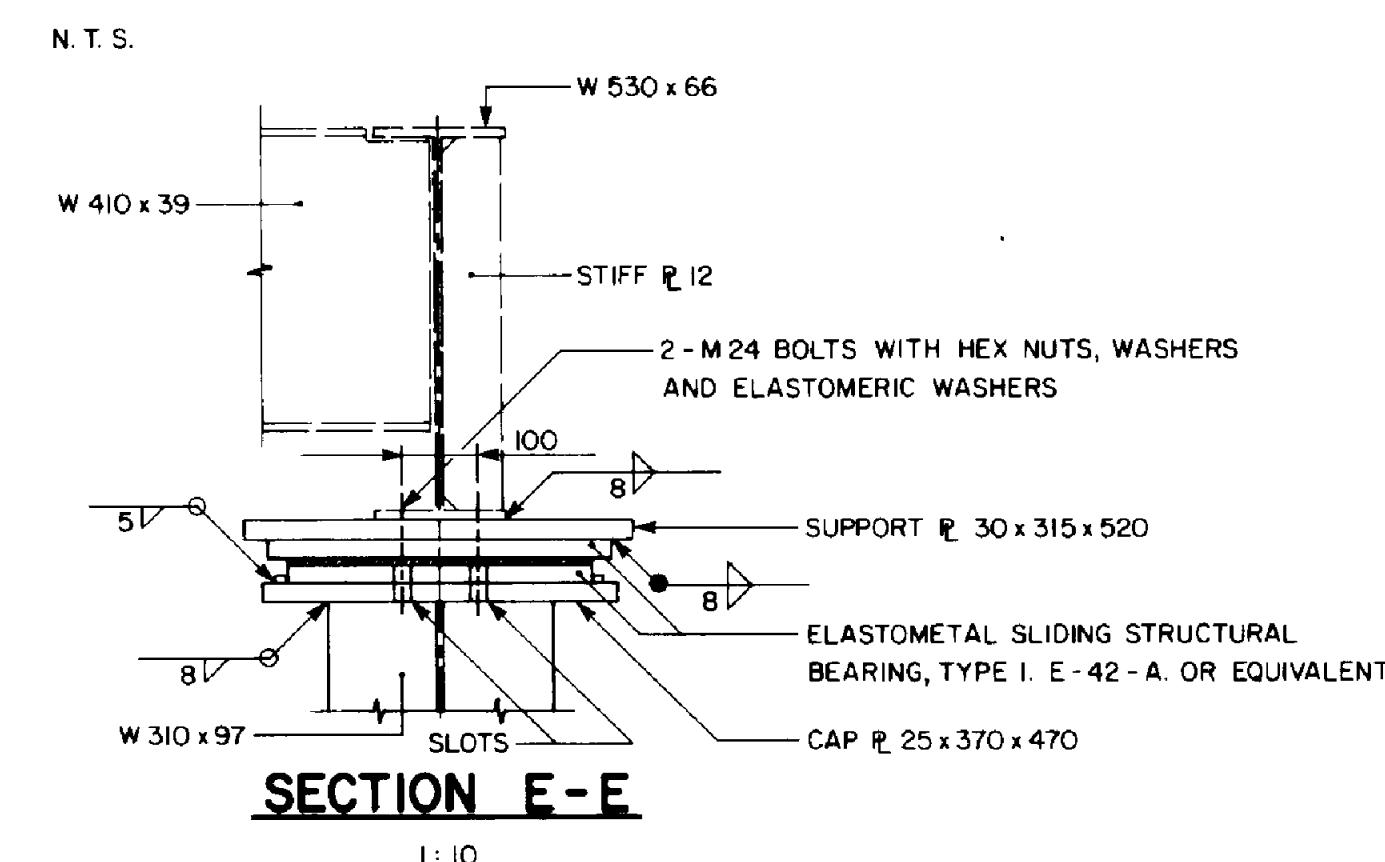
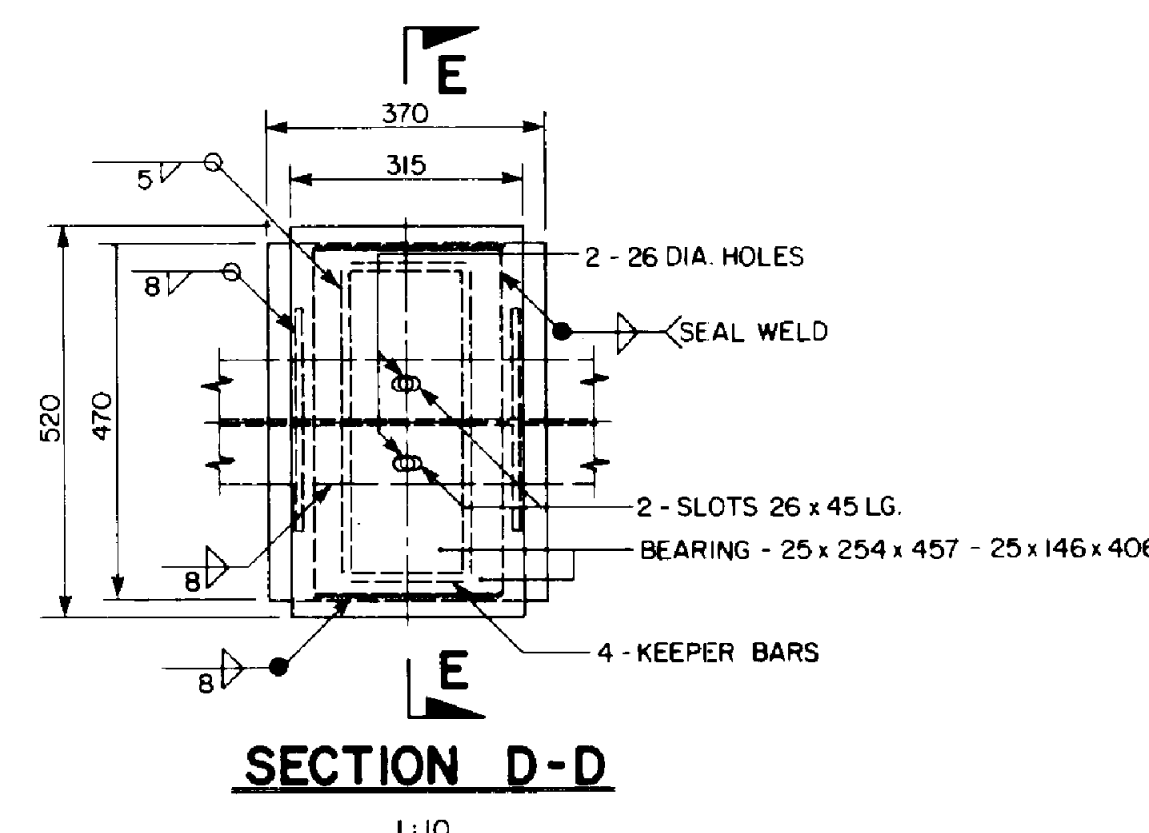
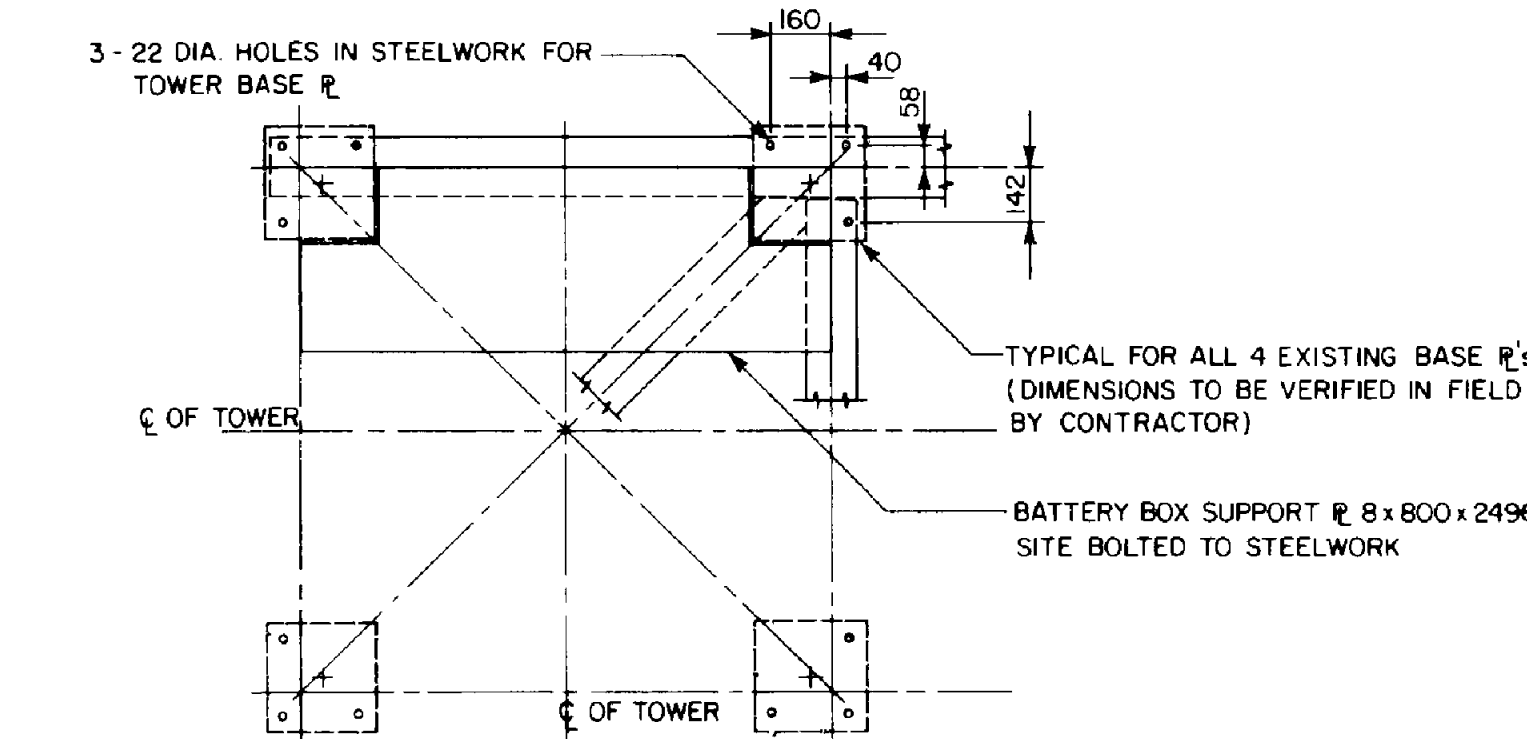
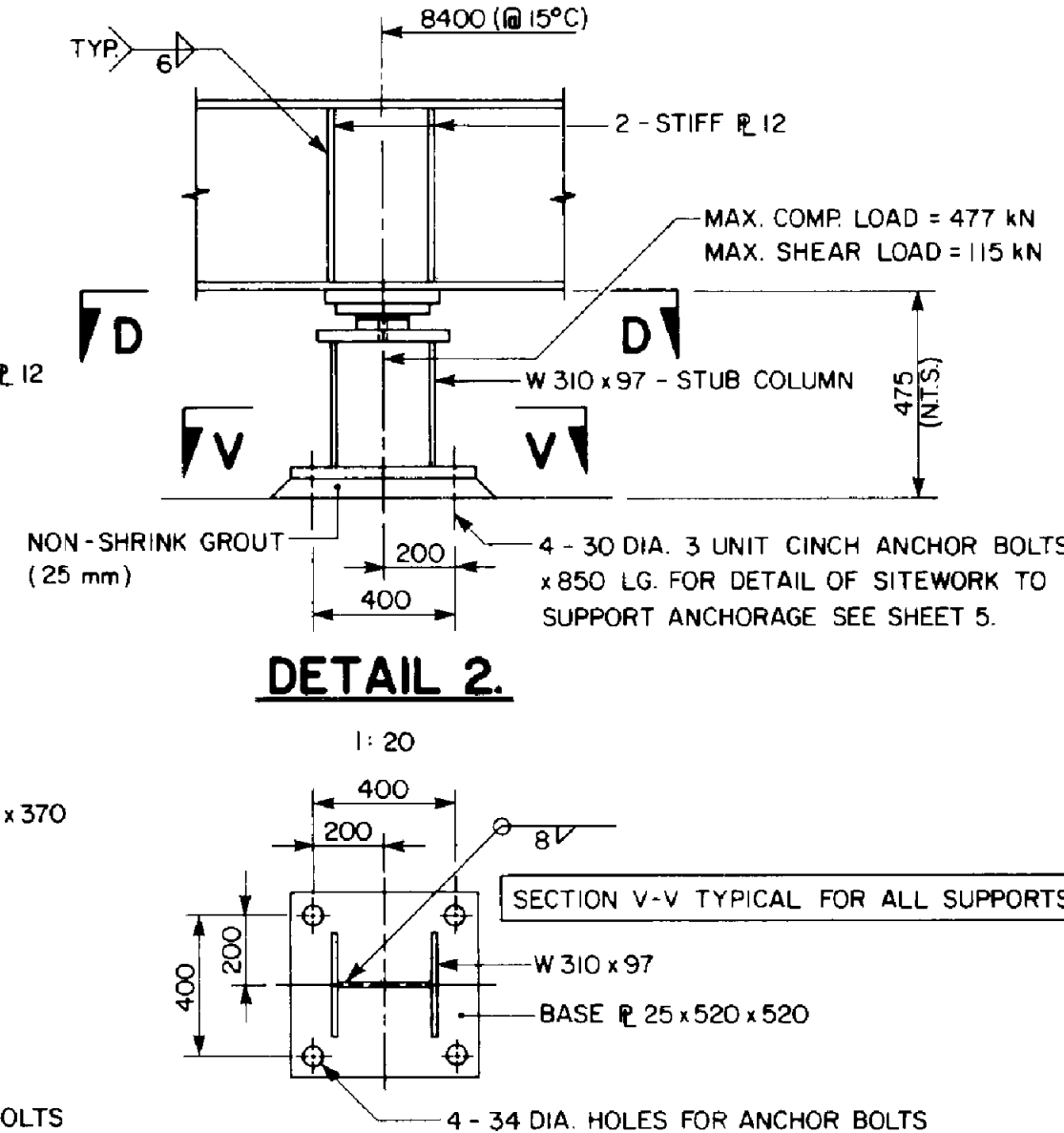
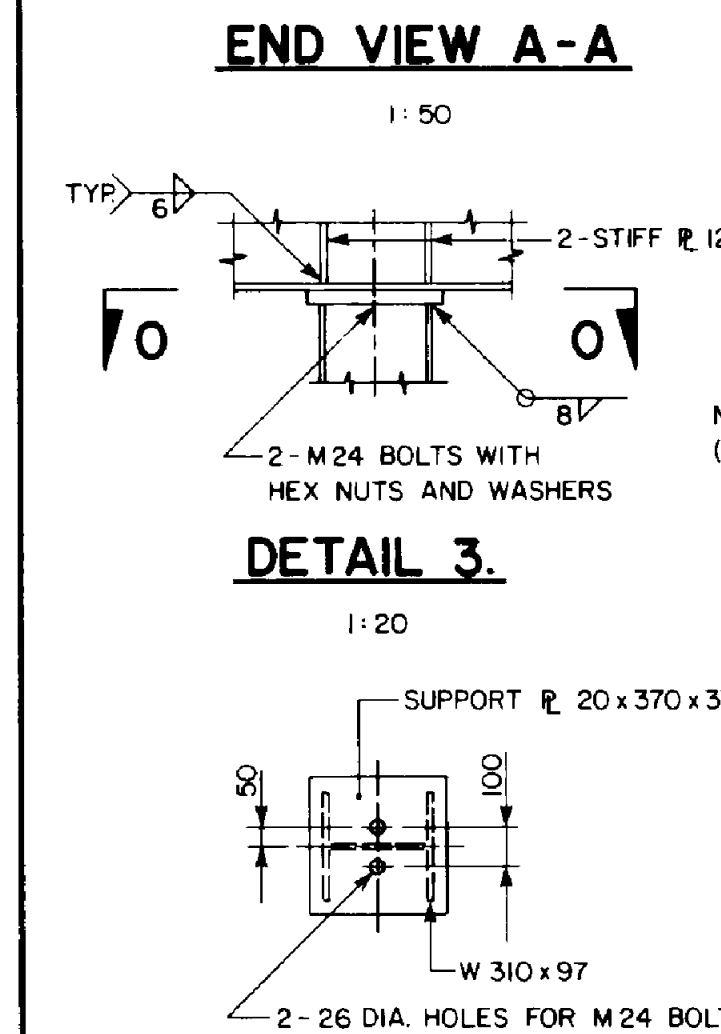
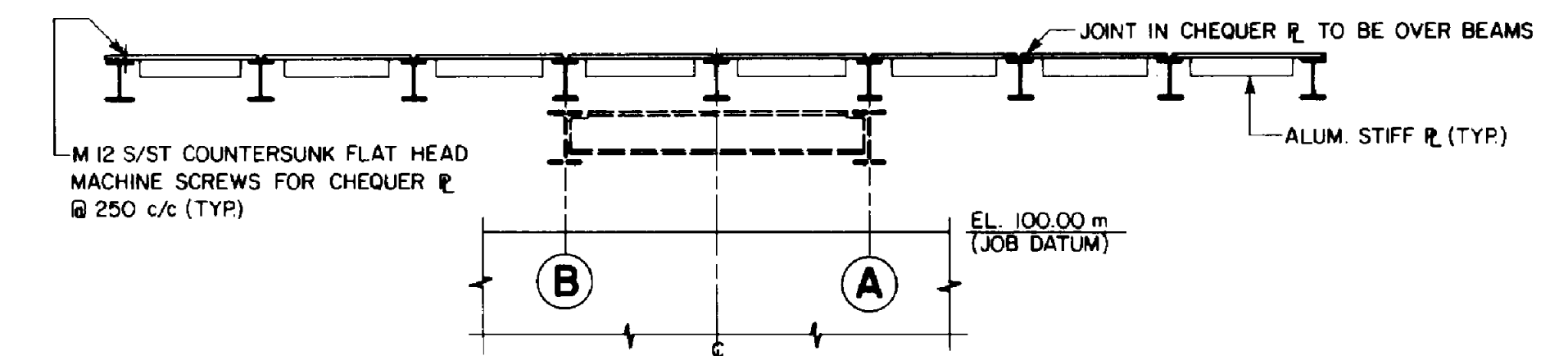
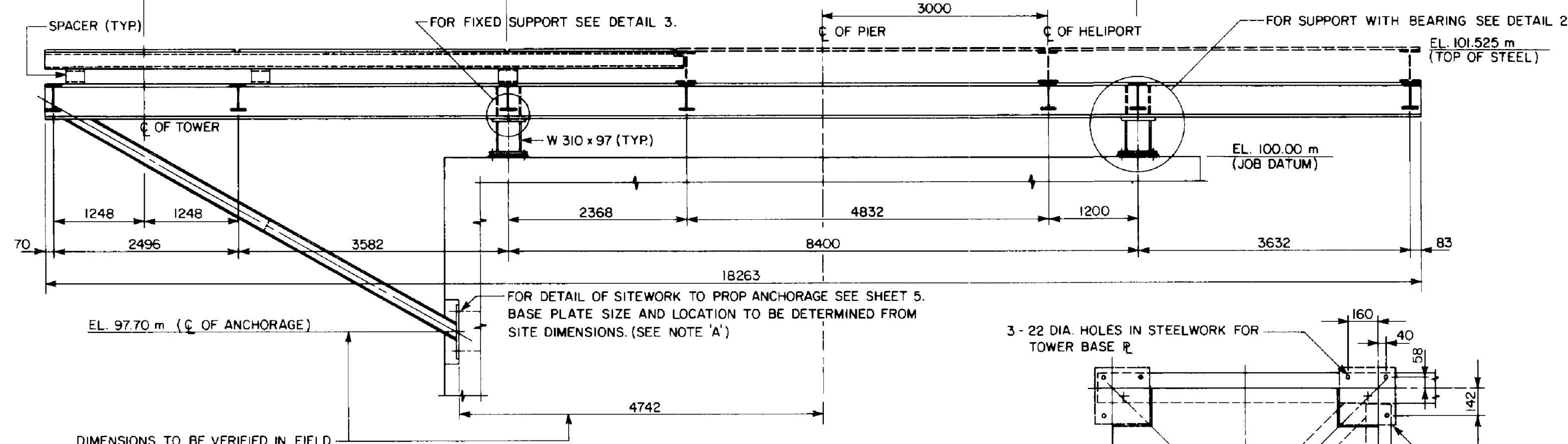
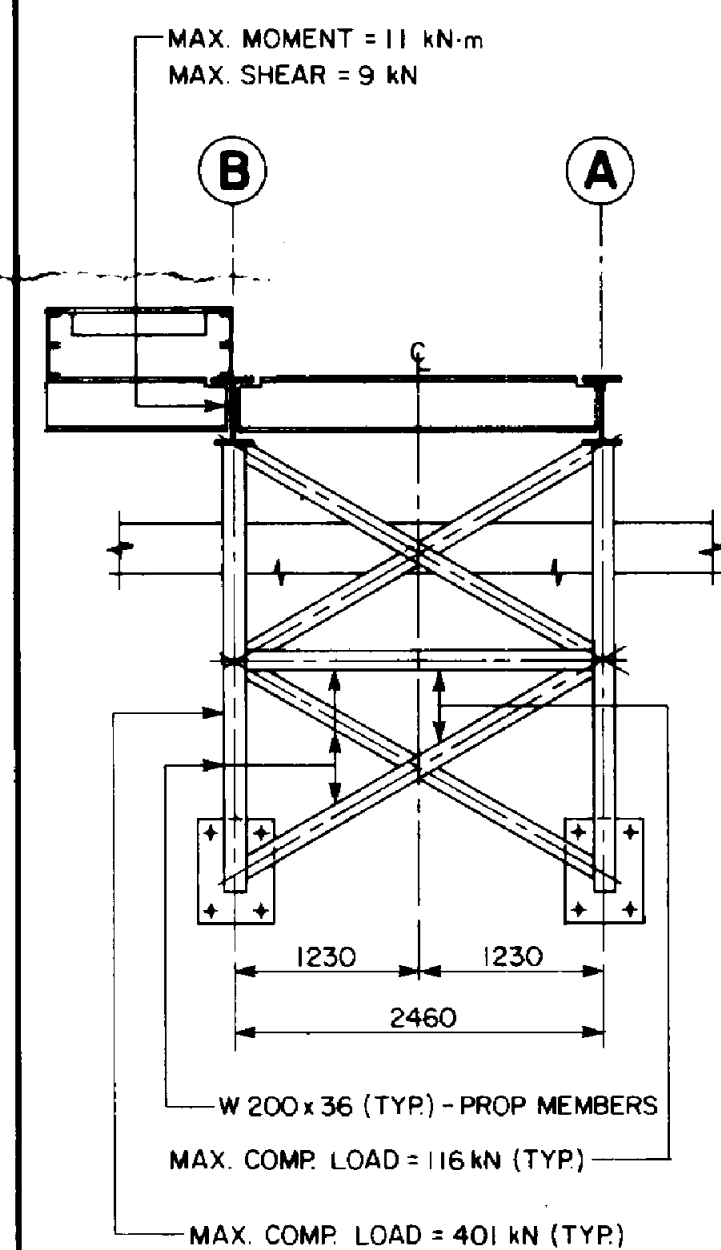
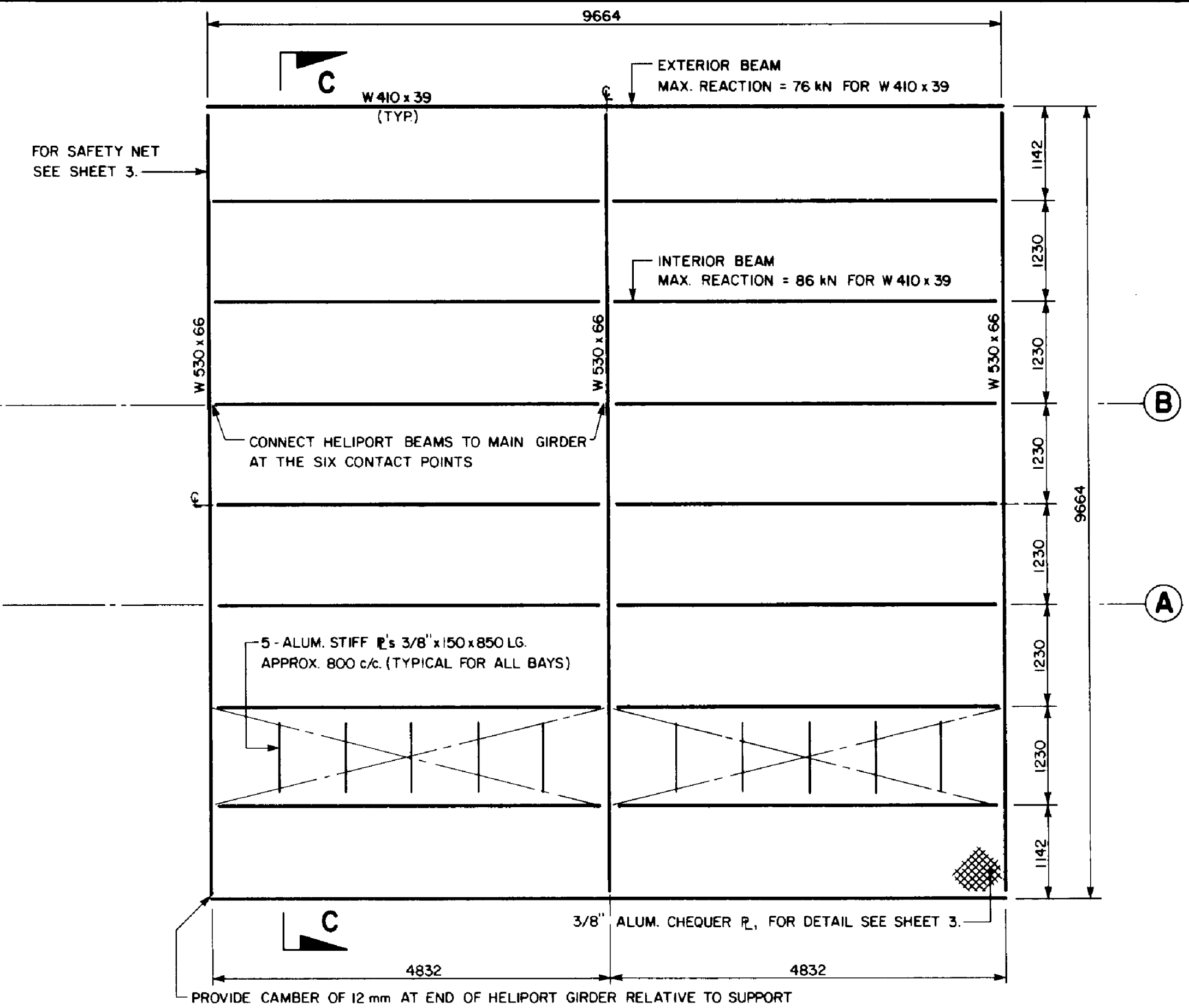
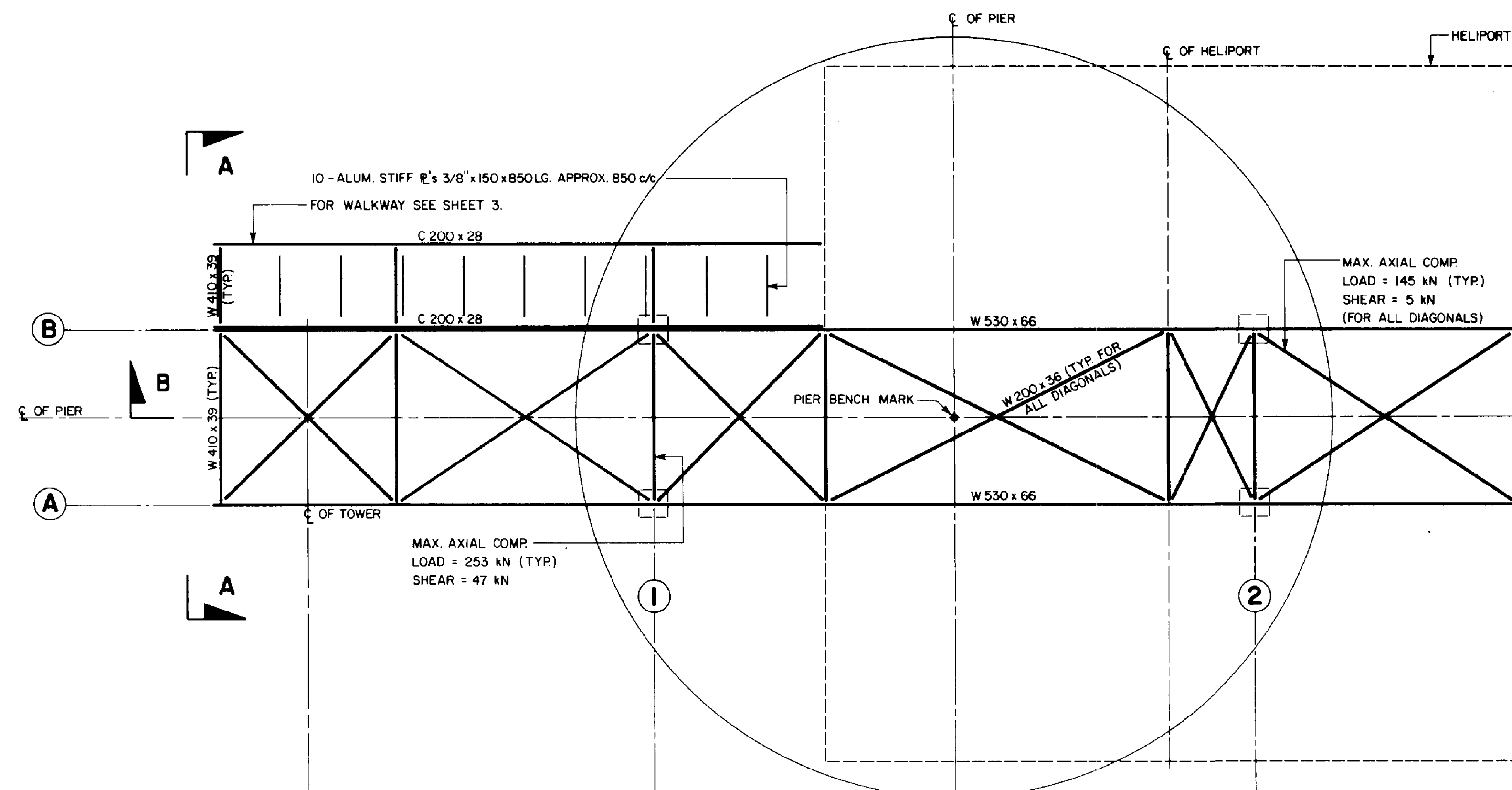
0	DESCRIPTION	BY	yyyy-mm-dd
rev	description	by par	date
Asset - Actif			
Colchester Reef			
LL620			
Drawing - Dessin			
Helipad Safety Net			
designed - conception			date
DESIGNED			YYYY-MM-DD
drawn - dessiné			date
MF			2018-09-13
checked - vérifié			date
CHECKED			YYYY-MM-DD
approved - approuvé			date
APPROVED			YYYY-MM-DD
CCG ref. no. - no. réf. GCC		scale - échelle	
REF NO / PROJ NO / FILE NO		N/A	
drawing no. - no. dessin		sheet-feuille	rev
		01/01	0



NOTE:
 REF. CHART 2813
 CHART DATUM = 173.3 m (IGLD)
 JOB DATUM = 100.0 m
 (ASSUMED CENTRE OF PIER)
 ALL ELEVATIONS (EXCEPT WATER LEVELS)
 REFERRED TO JOB DATUM.



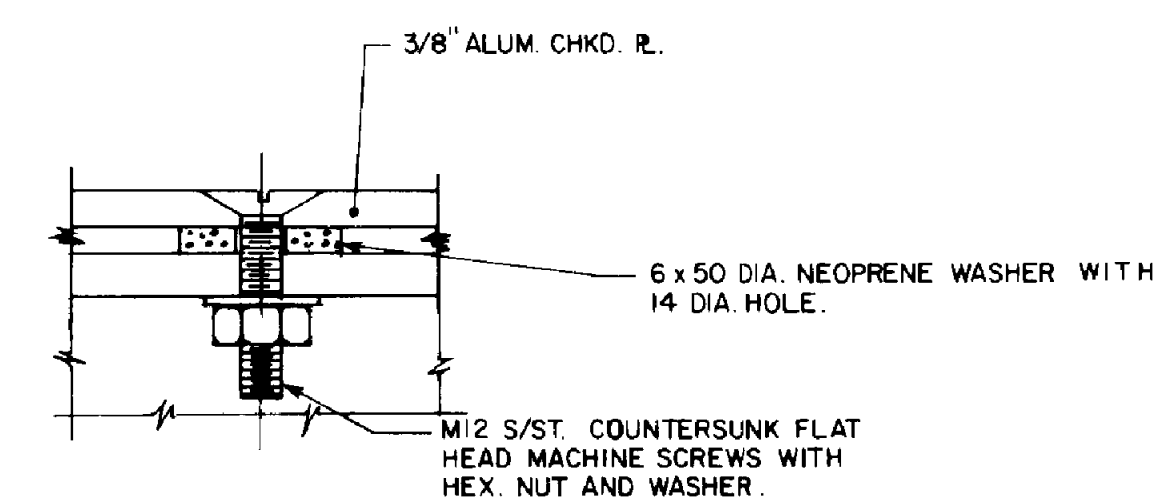
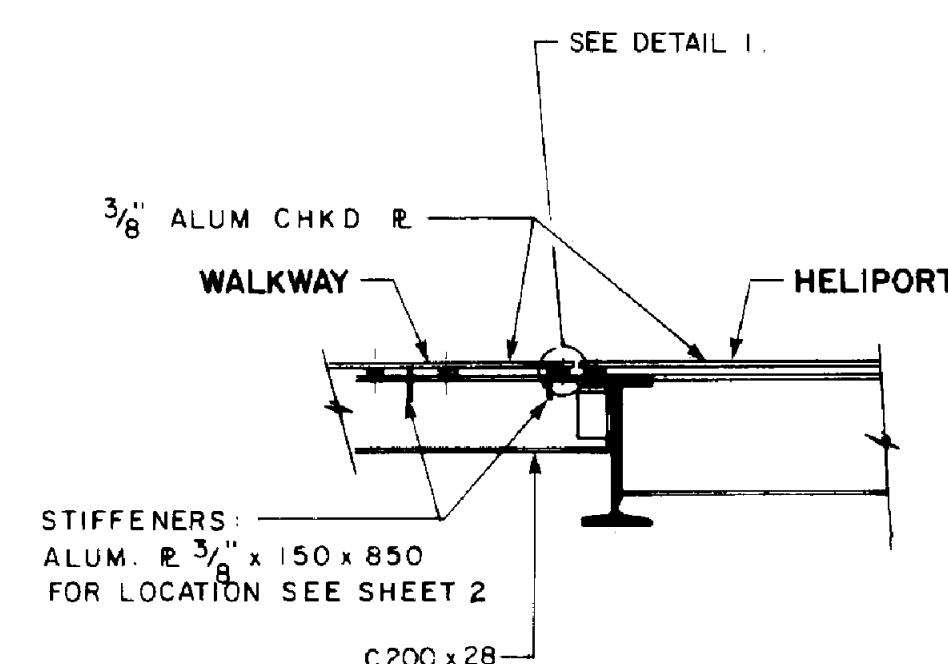
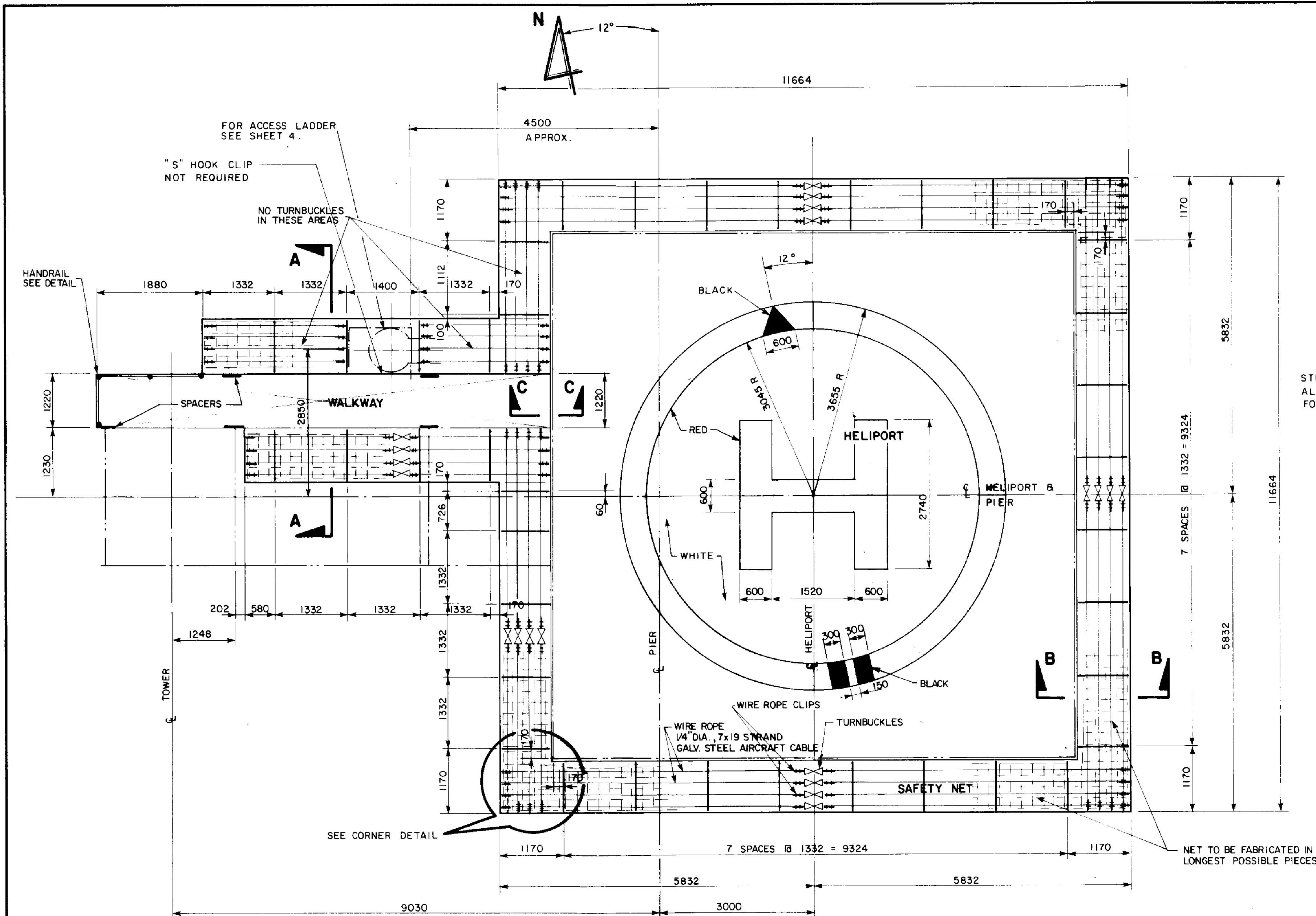
TENDER FINAL		7-4-83	BY/ PAR
TENDER PRELIMINARY		08/03/83	
No.	REVISION/MODIFICATION		DATE
TRANSPORT CANADA CANADIAN COAST GUARD MARINE AIDS DIVISION		TRANSPORTS CANADA GARDE CÔTIÈRE CANADIENNE DIVISION DES AIDES - MARINE	
LL620 COLCHESTER REEF , LAKE ERIE ONTARIO HELIPORT GEN. ARGT , LOCATION & KEY PLANS			
DES'G'D/CONCU'D	CHK'D/VÉRIF'G	SCALE/ÉCHELLE	DWG/DESSIN
DRAWN/DESS	SUB'D/SOUMIS	AS SHOWN	No.
DATE	NOV. 82	APP'D/APPR	CR-15680
			SHEET/FEUILLE 1 OF 5



NOTES:

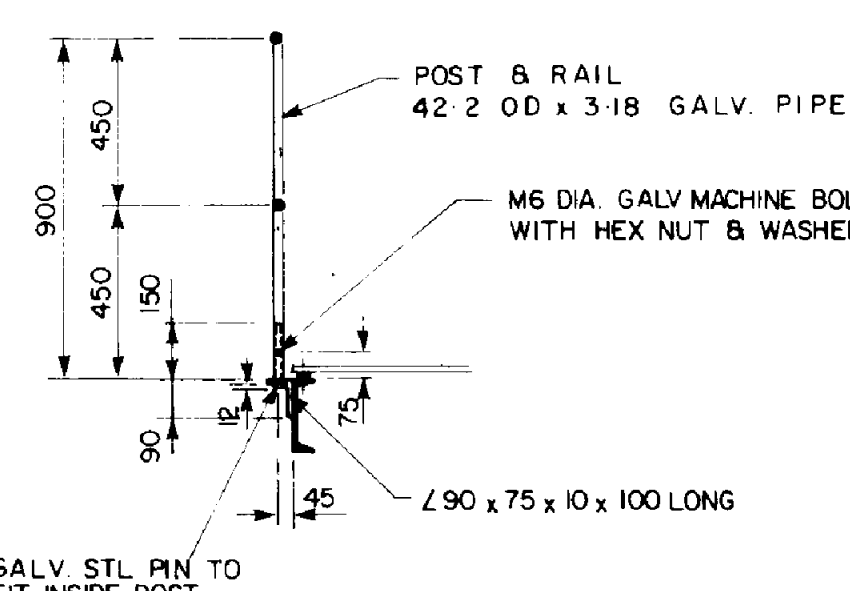
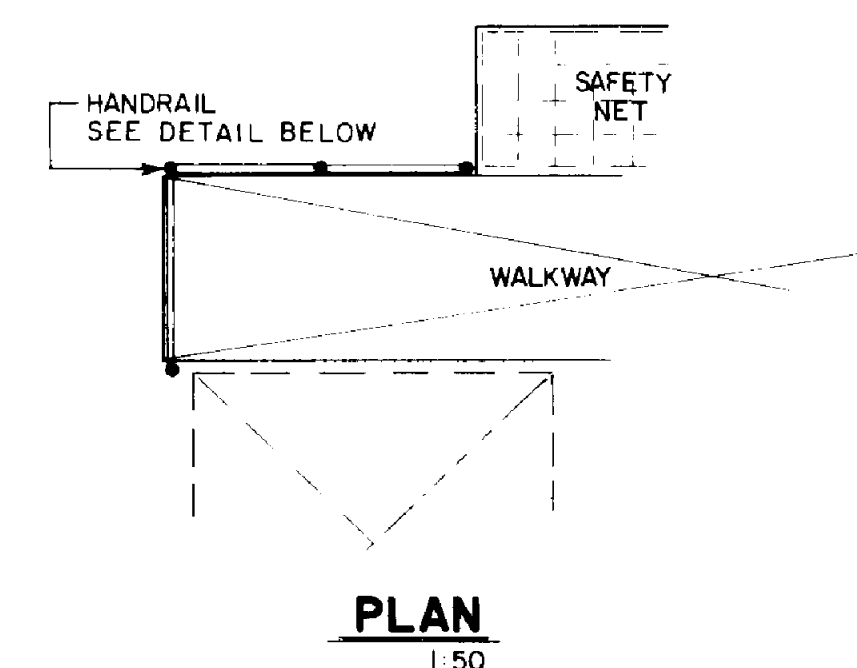
1. STRUCTURAL STEEL:
TO CSA G40.21-M 1981, GRADE 300 W.
2. STRUCTURAL BOLTS, NUTS & WASHERS:
TO ASTM A 325 - 76 C (GALV).
3. GALVANIZING:
ALL STEEL & FASTENERS HOT-DIPPED GALVANIZED AFTER FABRICATION IN ACCORDANCE TO CSA STANDARD G 164 - M1981 UNLESS OTHERWISE NOTED.
4. WELDING:
TO CSA W 59 - 1977 UNLESS SPECIFIED OTHERWISE. MANUFACTURER TO BE QUALIFIED TO CSA W 47.2 - 1978.
5. WELDING ELECTRODES:
TO CSA W 48.1 - 1976.
6. ALL LOADS AND REACTIONS SHOWN ARE FACTORED LOADS IN ACCORDANCE WITH CAN3 - S16.1 - M78. CONTRACTOR TO DESIGN SUITABLE CONNECTIONS.
7. CHEQUER PLATE BOLTS:
STAINLESS STEEL - 18-8
8. ALUMINUM CHEQUER PLATE: TO CSA H44 - 1975 - .6061T651.

TENDER FINAL		7.4.83	
TENDER PRELIMINARY		08/03/83	A.W.
No.	REVISION/MODIFICATION	DATE	BY/PAR
TRANSPORT CANADA CANADIAN COAST GUARD MARINE AIDS DIVISION			
TRANSPORTS CANADA GARDE CÔTIÈRE CANADIENNE DIVISION DES AIDES-MARINE			
LL620 COLCHESTER REEF, LAKE ERIE, ONTARIO HELIPORT STEEL ARG'T & DETAILS			
DESIG'D/CONCU	CHK'D/VÉRIF'D	SCALE/ÉCHELLE	DWG/DESSIN
DRAWN/DESS	SUB'D/SOUMIS	AS SHOWN	CR-15680
DATE DEC 21, 82	APP'D/APPR		SHEET/FEUILLE 2 OF 5



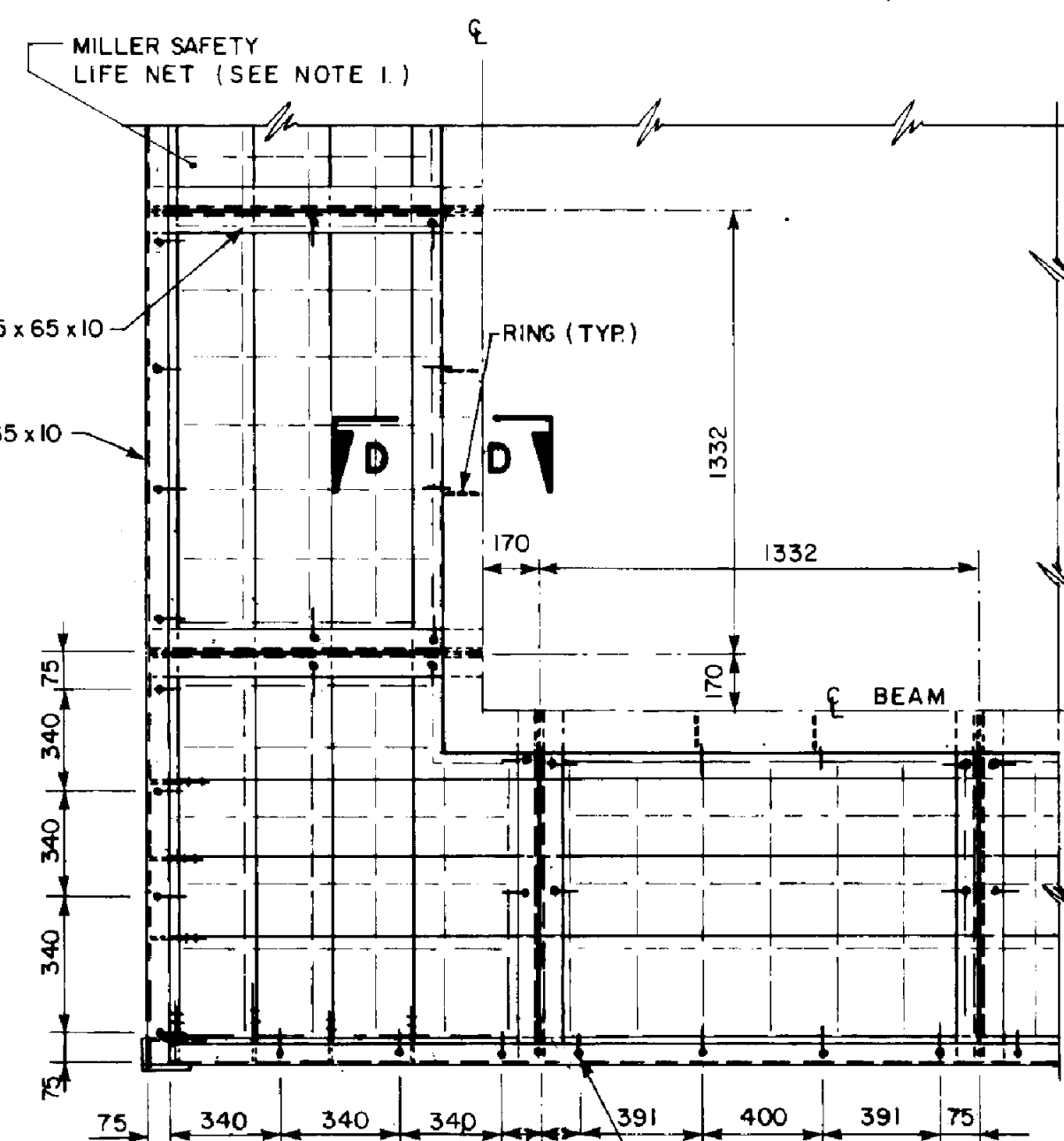
SECTION 'C-C'
1:20

DETAIL 1
NTS

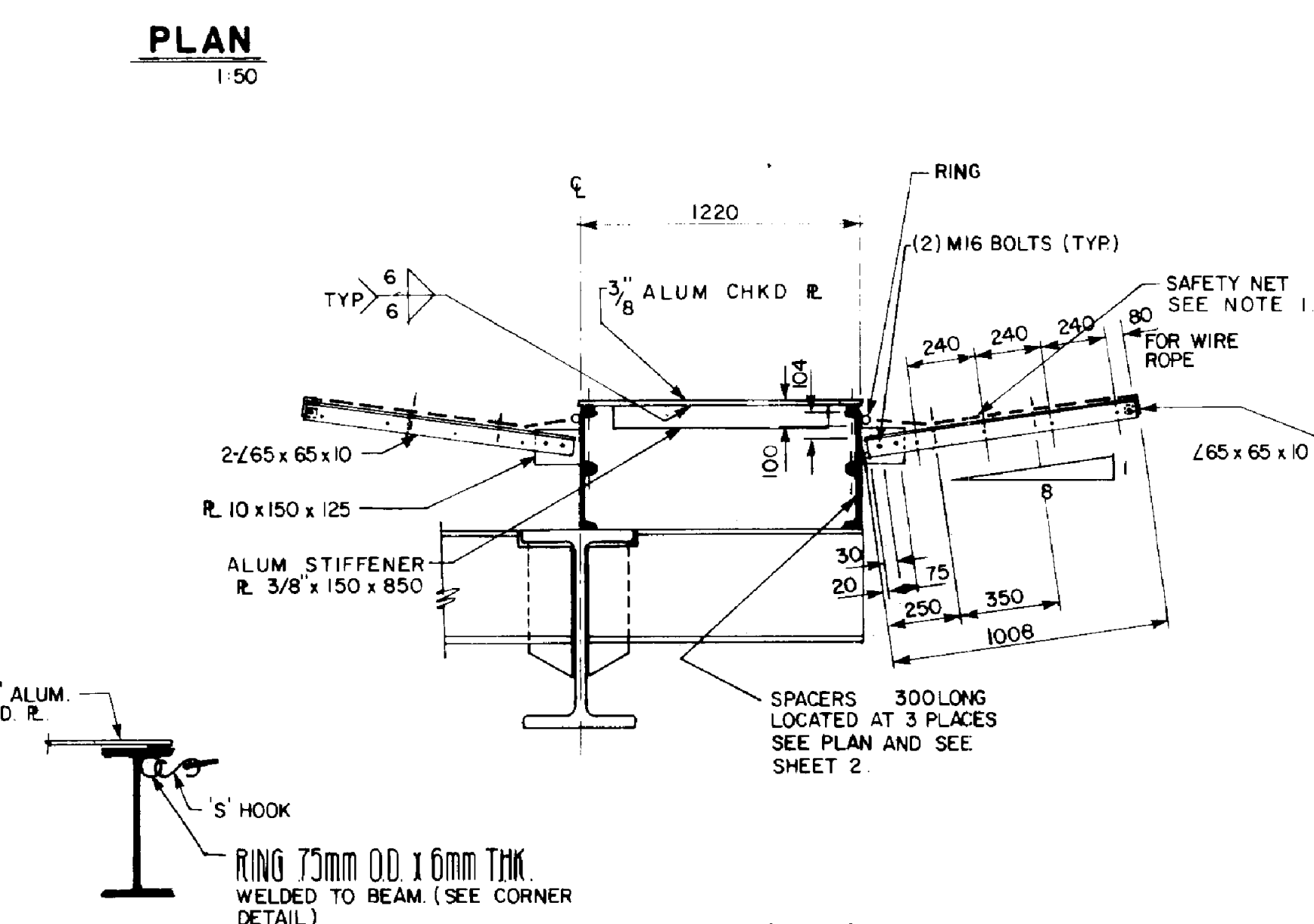


DETAIL (TYP)
1:20

- NOTES:
- MILLER 25 NYLON WEBBING SAFETY NET: WEBBING ON 150 CENTRES WITH OPENINGS BETWEEN WEBBINGS 125 ALL CROSSINGS SEWN WITH BOX STITCH PATTERN TO ANSI A10.11.
 - GALVANIZING: ALL STEEL & FASTENERS HOT-DIPPED GALVANIZED AFTER FABRICATION IN ACCORDANCE TO CSA STANDARD G164-M1981 UNLESS OTHERWISE NOTED.
 - STRUCTURAL STEEL: TO CSA G40.21-M 1981 GRADE 300W
 - BOLTS NUTS & WASHERS: TO ASTM A 325 - 76 C
 - WELDING: TO CSA W59 - 1977 UNLESS SPECIFIED OTHERWISE MANUFACTURER TO BE QUALIFIED TO CSA W47.2 - 1978
 - WELDING ELECTRODES: TO CSA W48.1-1976
 - ALUMINUM CHKD. PLATE: TO CSA H44 - 1975 - 6061T651
 - NEOPRENE WASHER: TO CAN 3-56-M78 CLAUSE 11.10 TABLE 40 GRADE (DOROMETER) 60

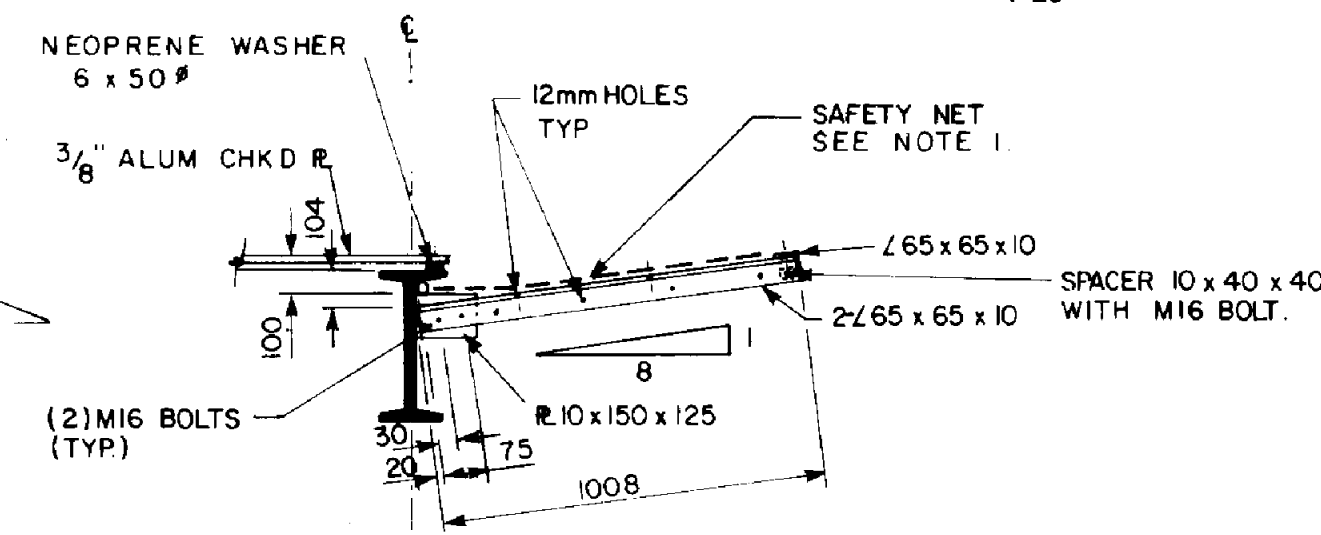


CORNER DETAIL (TYP.)
1:20



SECTION 'D-D'
NTS

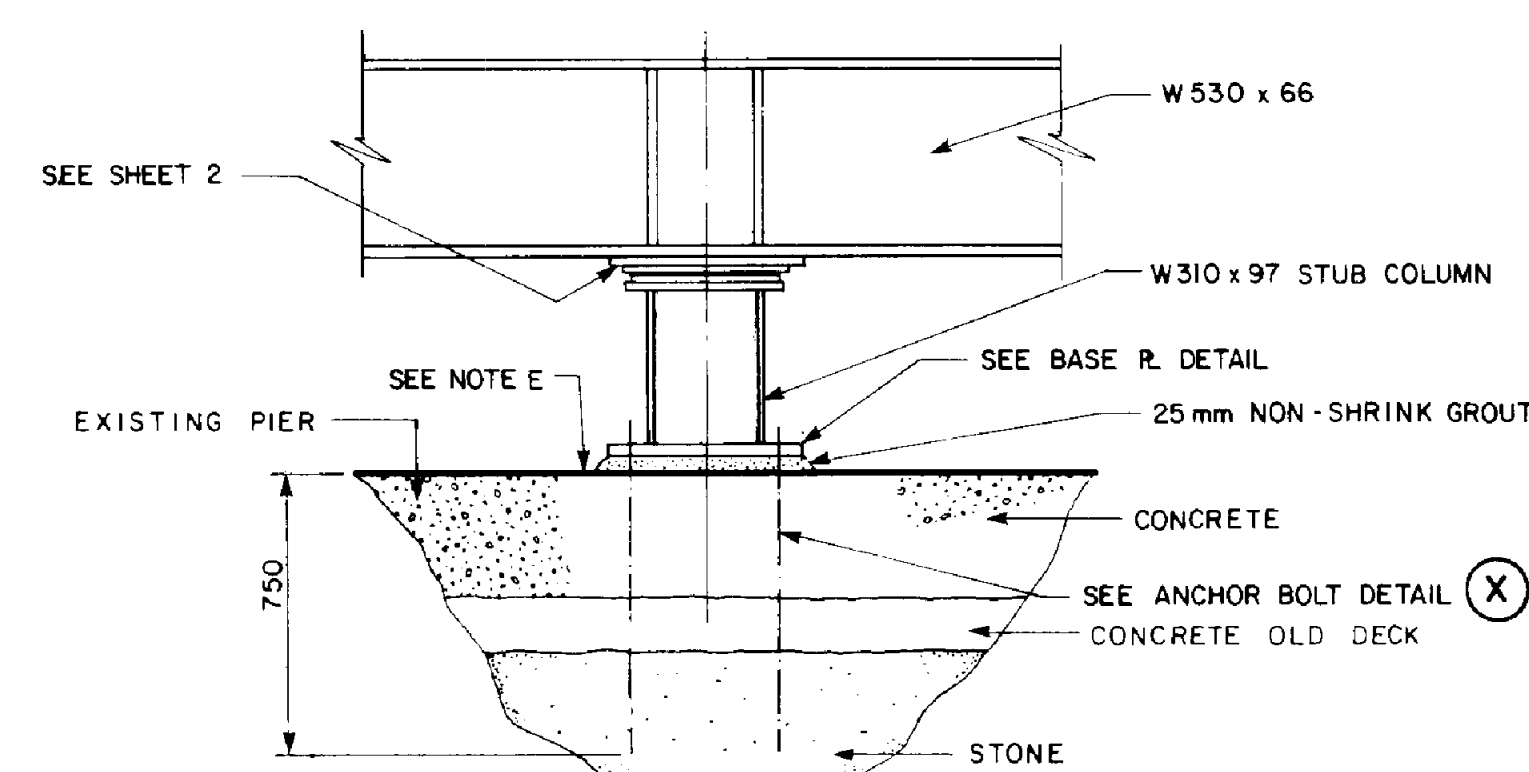
SECTION 'A-A'
1:20



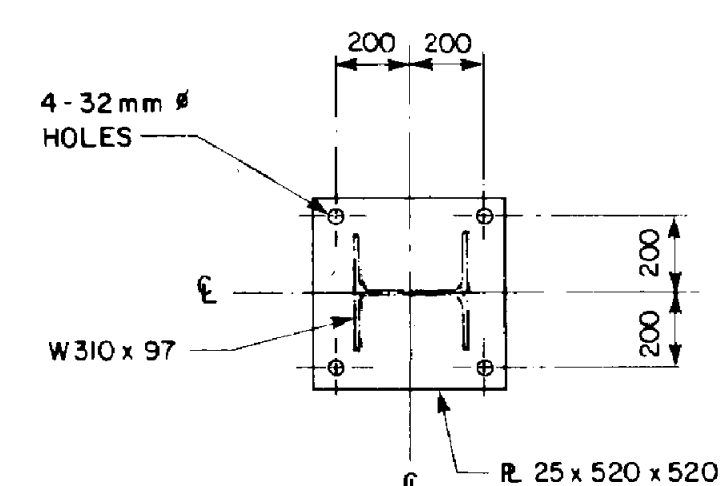
SECTION 'B-B' (TYP.)
1:20

TENDER FINAL	7-4-83	
TENDER PRELIMINARY	08/03/83	C.F.B.
No.	REVISION/MODIFICATION	DATE
TRANSPORT CANADA CANADIAN COAST GUARD MARINE AIDS DIVISION		
TRANSPORTS CANADA GARDE CÔTIÈRE CANADIENNE DIVISION DES AIDES-MARINE		
LL620 COLCHESTER REEF, LAKE ERIE ONTARIO HELIPORT SAFETY NET ARGT.		
DES'G'D/CONCU DCK	CHK'D/VÉR DCK	V.P.
DRAWN/DESS	SUB'D/SOUMIS	AS SHOWN
DATE DEC. 82	APP'D/APPR	
DWG/DESSIN No.		SHEET/FEUILLE OF 3 DE 5
SCALE/ECHELLE		CR-15680

② SLIDING
① FIXED

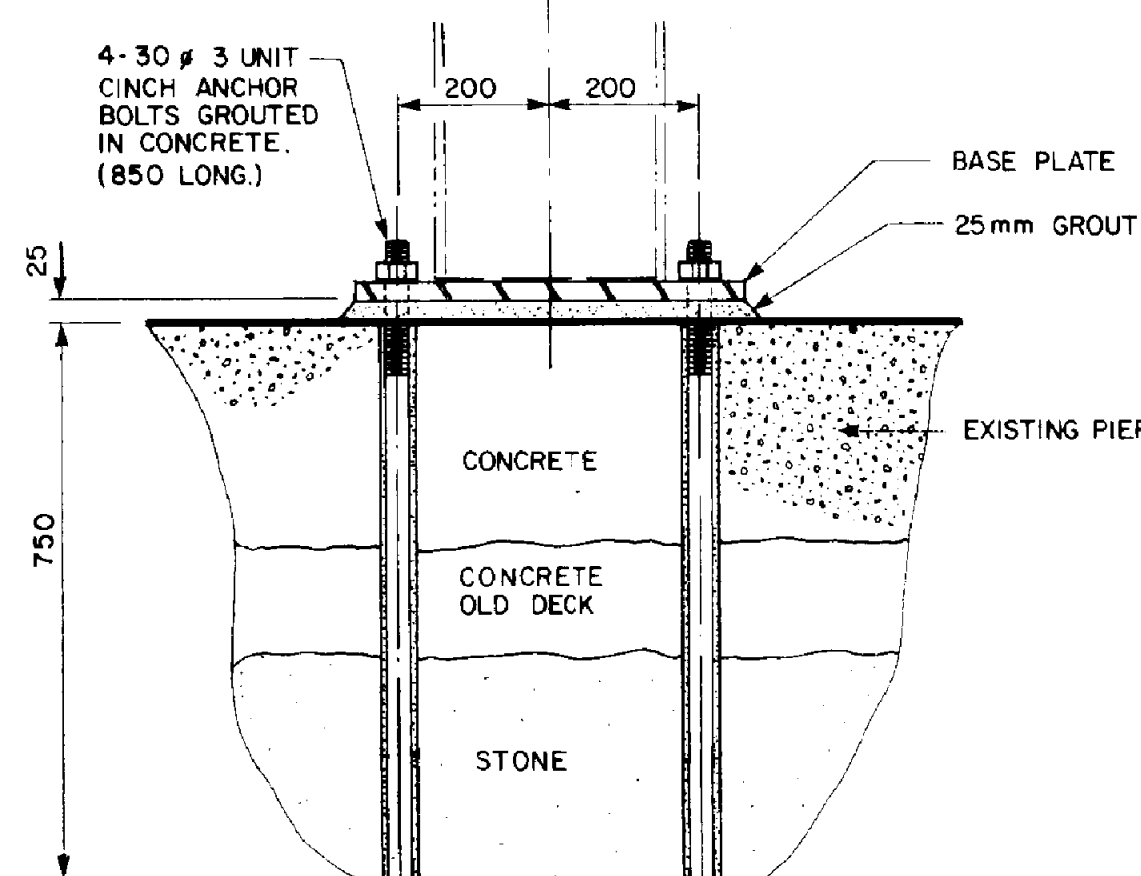


STUD DETAIL
FOR LOCATION SEE SHEET 2
1:20



BASE P. DETAIL
1:20

SLIDING ②
FIXED ①

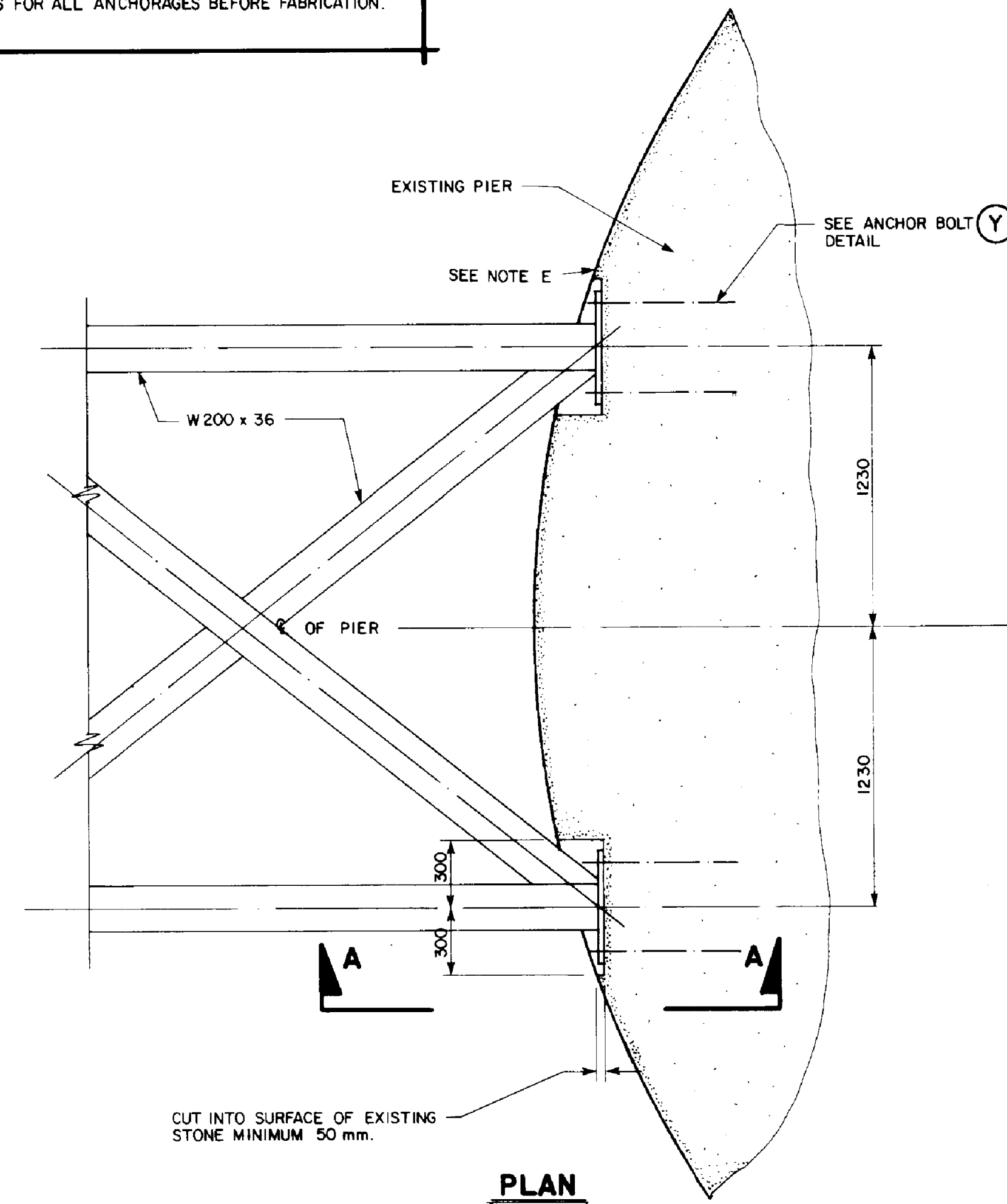


(X) ANCHOR BOLT DETAIL
1:10

NOTE E:
SURVEY THE PIER TO VERIFY THE EXISTING SURFACES FOR ALL ANCHORAGES BEFORE FABRICATION.

B

A



NOTES FOR SITEWORK

- A. LOCATE ANCHOR BOLTS IN STONE WITH A MINIMUM EDGE DISTANCE OF 100mm. VERIFY ANCHOR BOLT LOCATION AND BASE PLATE SIZE IN FIELD BEFORE FABRICATION.
- B. DRILL FIRST ANCHOR BOLT HOLE COMPLETELY THROUGH STONE AT EACH ANCHORAGE POINT. MEASURE AND REPORT THICKNESS OF STONE TO ENGINEER BEFORE PROCEEDING WITH FURTHER WORK.
- C. REMOVE MORTAR FROM BETWEEN STONES BEHIND AND WITHIN 400 mm. OF THE EDGE OF THE BASE PLATE AND TO A DEPTH OF 300 mm. REGROUT WITH HIGH EARLY STRENGTH GROUT.
- D. SURFACE BEHIND ANCHORAGES SHALL BE SOUND, FLAT, PLUMB (OR LEVEL) TO RECEIVE GROUT.
- * SUBJECT TO MODIFICATION

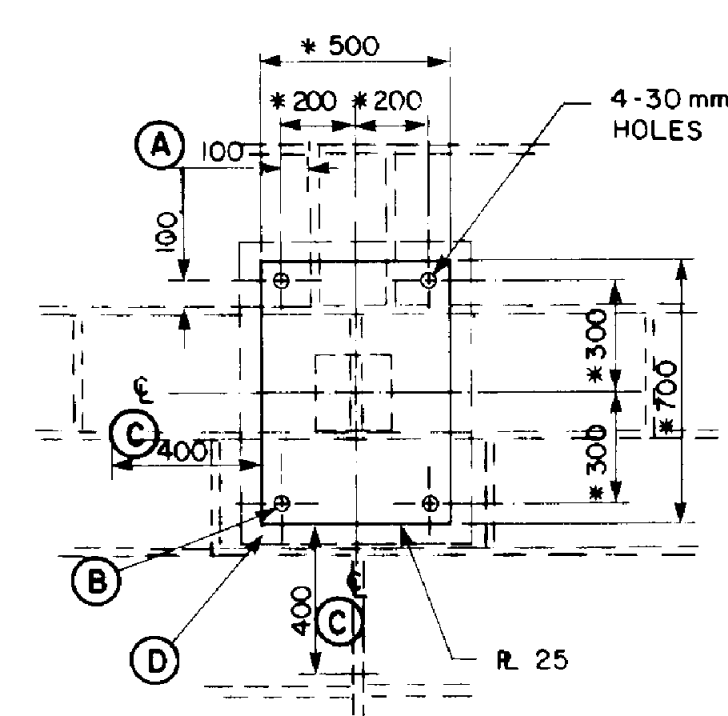
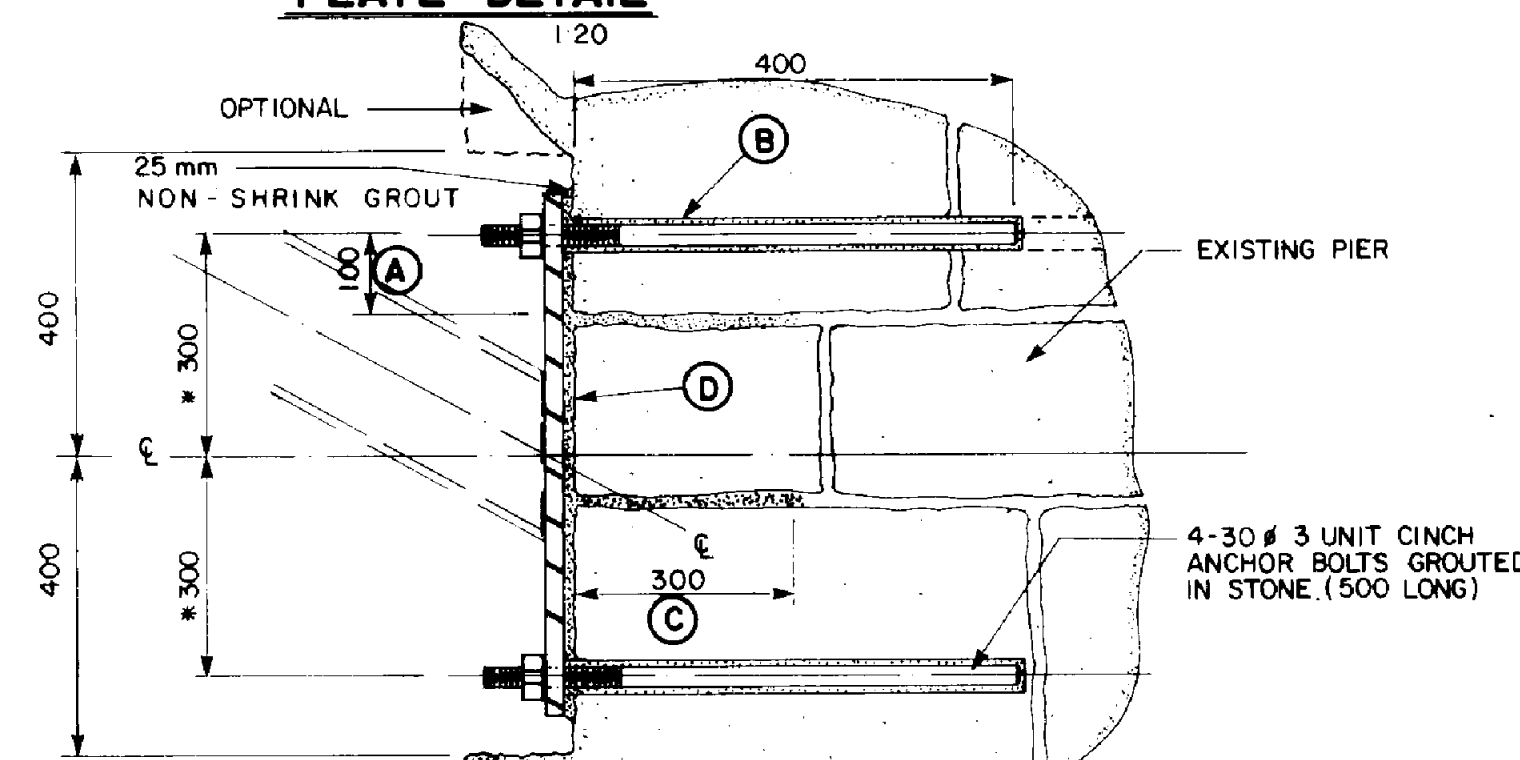


PLATE DETAIL
1:20



TENDER FINAL		7-4-83	CFB <i>100m</i>	
TENDER PRELIMINARY		08/03/83		
No.	REVISION/MODIFICATION		DATE	BY/ PAR
TRANSPORT CANADA CANADIAN COAST GUARD MARINE AIDS DIVISION		TRANSPORTS CANADA GARDE CÔTIÈRE CANADIENNE DIVISION DES AIDES - MARINE		
LL620 COLCHESTER REEF, LAKE ERIE ONTARIO HELIPORT SITE WORK				
DESIG'D/CONCU	CHK'D/VÉR <i>DCK</i>	V.R.	SCALE/ECHELLE	SHEET/FEUILLE 5 OF 5
DRAWN/DESS <i>201</i>	SUB'D/SOUMIS		AS SHOWN	
DATE FEB. 83	APP'D/APPR <i>AK</i>		CR - 15680	