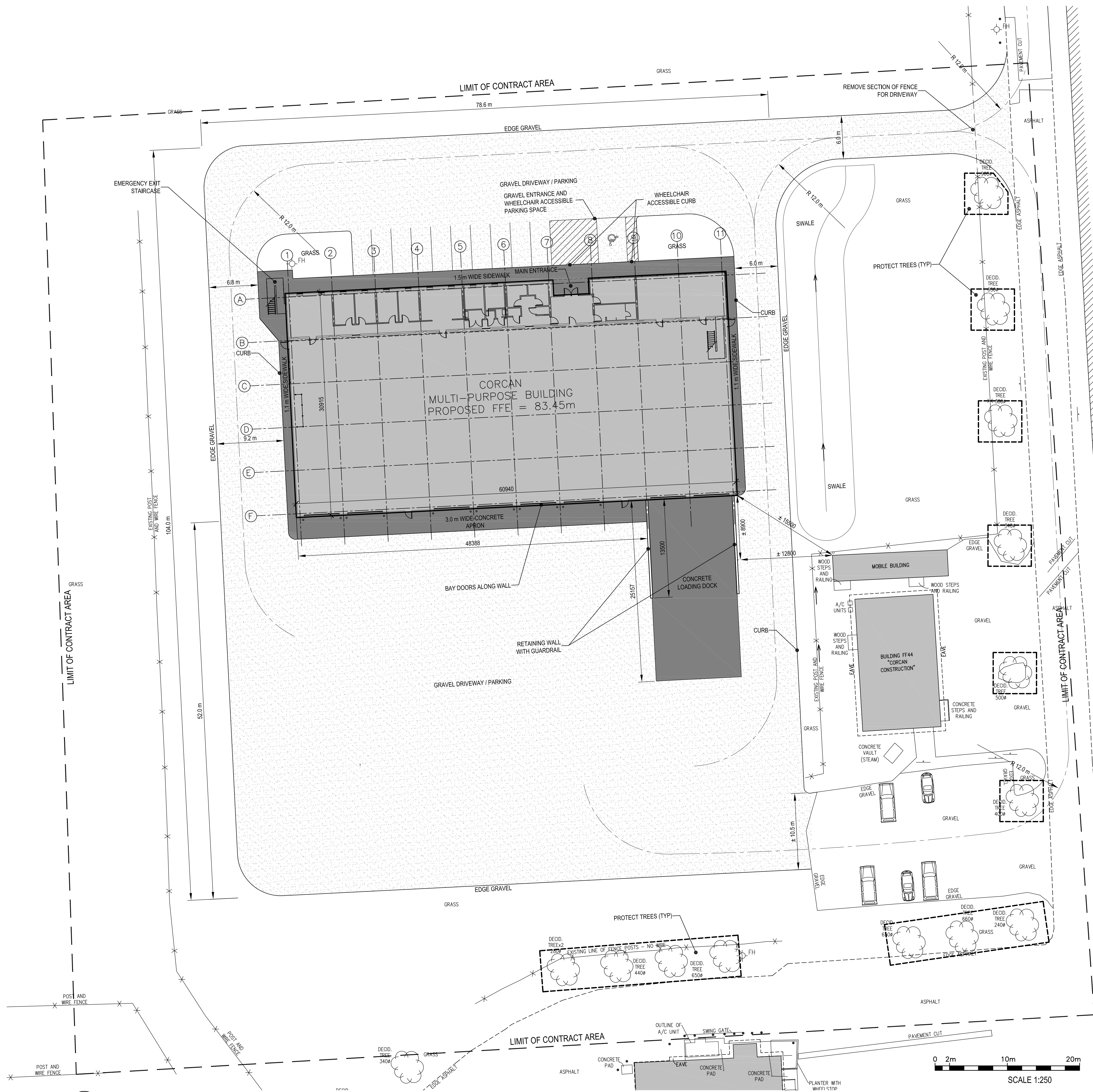


08.07.2014

1403-A100-SitePlan-002.dwg

PWGSC B1 (1000x707)



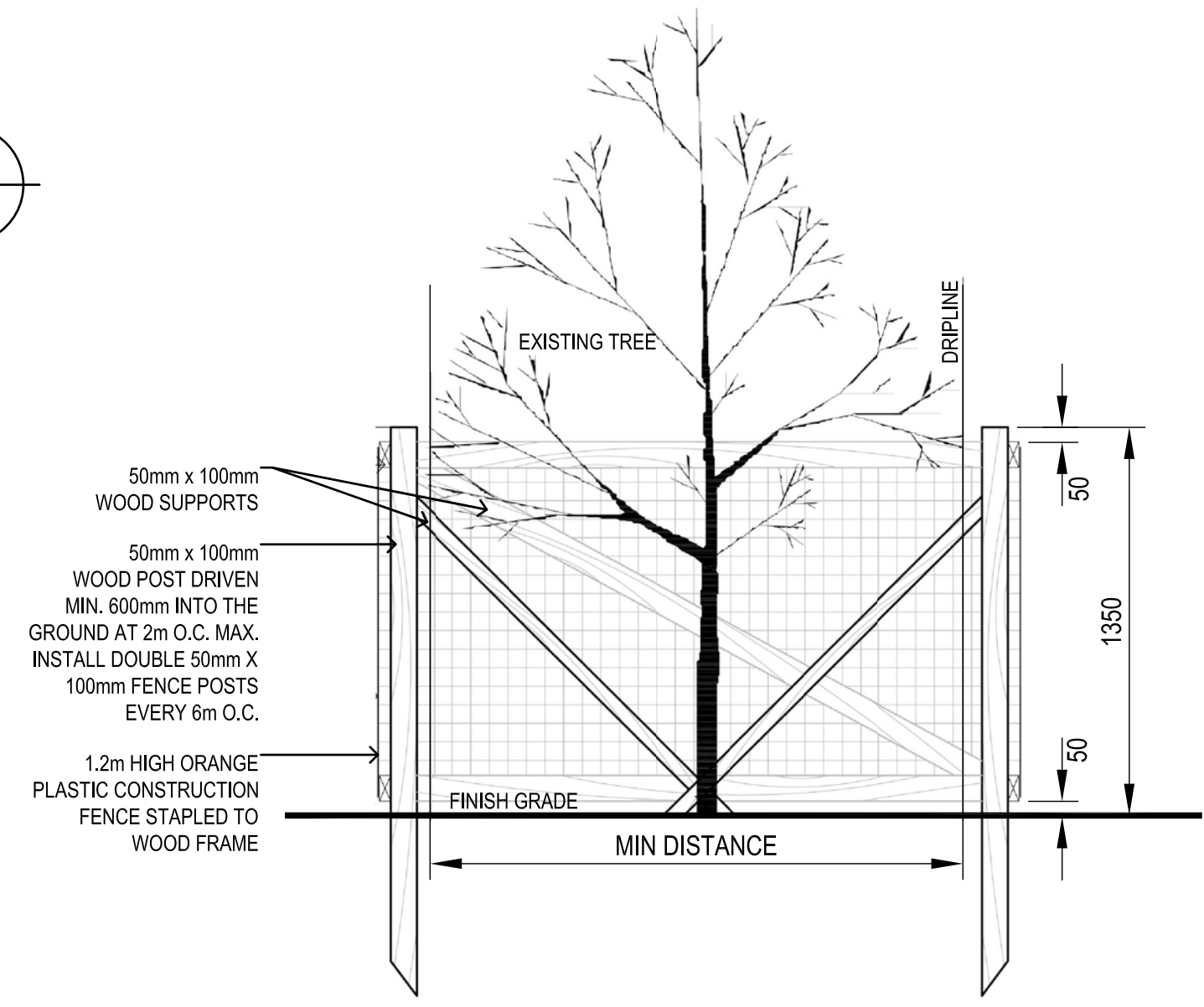
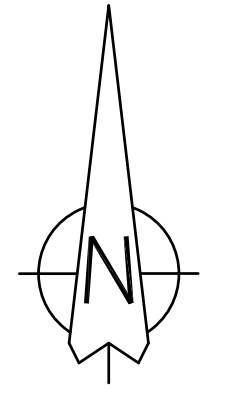
1 SITE PLAN
A100

1:250

0 2m 10m 20m
SCALE 1:250

KEYNOTES	
①	PERIMETRE SECURITY FENCE
②	SITE OFFICE TRAILER
③	SECURITY OFFICE AND WORK SITE ACCESS FOR WORKERS
④	WORK SITE GATE AND ACCESS FOR DELIVERIES
⑤	OPTIONAL PARKING SPACES
⑥	PROPOSED CONTRACTOR ON-SITE STORAGE AREA

LEGEND	
	GRAVEL
	FIRE DEPARTMENT ACCESS ROUTE
	DRAINAGE SLOPE
	TREE PROTECTION FENCING



NOTES:

DO NOT OPERATE, PARK, REPAIR OR REFUEL EQUIPMENT WITHIN 5M OF THE FENCE.

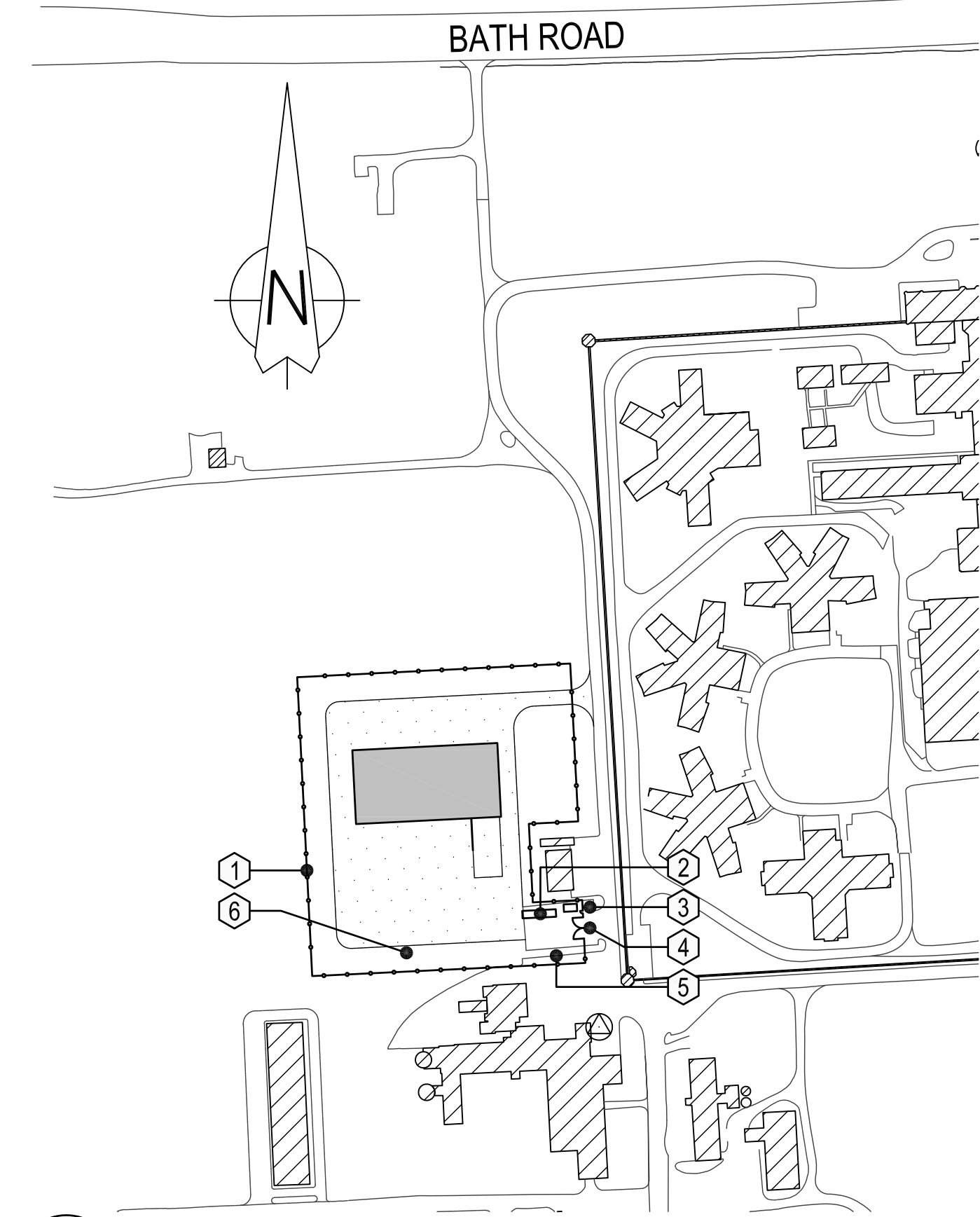
DO NOT STORE MATERIAL OR STOCKPILE ANY EARTH MATERIALS WITHIN 5M OF THE FENCE.

DO NOT RAISE OR LOWER THE EXISTING GRADE WITHIN THE CRZ WITHOUT APPROVAL IF EXCAVATION MUST TAKE PLACE WITHIN THE DRIPLINE OR CRZ WHICHEVER IS GREATER. A TRENCH SHOULD BE DUG CAREFULLY BY HAND OR WITH A ROOT CUTTER (STUMP GRINDER) OR STONE CUTTING (CUT OFF) MACHINE ALONG THE FURTHEST REACH OF THE CUT.

IF ANY ROOTS ARE EXPOSED DURING CONSTRUCTION, THEY SHOULD BE IMMEDIATELY REBURIED WITH SOIL OR COVERED WITH FILTER CLOTH OR WOOD CHIPS AND KEPT MOIST UNTIL THEY CAN BE BURIED PERMANENTLY.

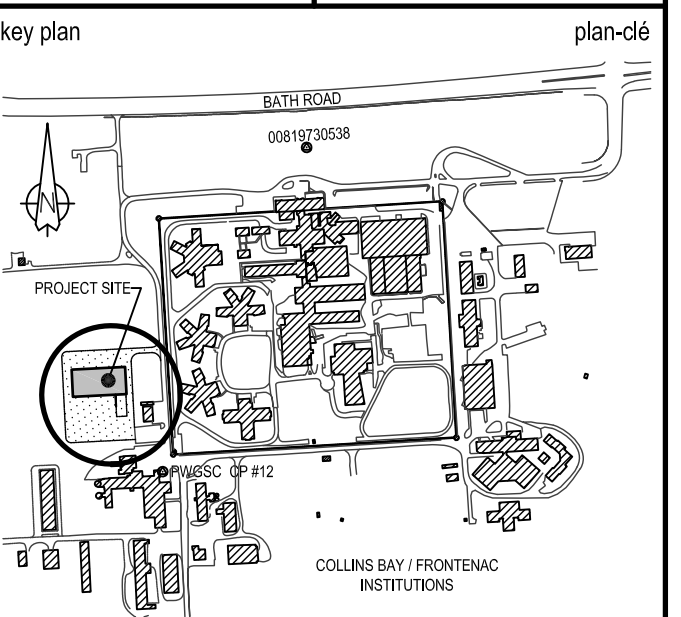
2 TREE PROTECTION FENCING
A100

N.T.S.



3 LIMIT OF CONTRACT AREA AND CONSTRUCTION FACILITIES
A100

N.T.S.



01	ISSUED FOR TENDER	15/03/26
revision	description	date

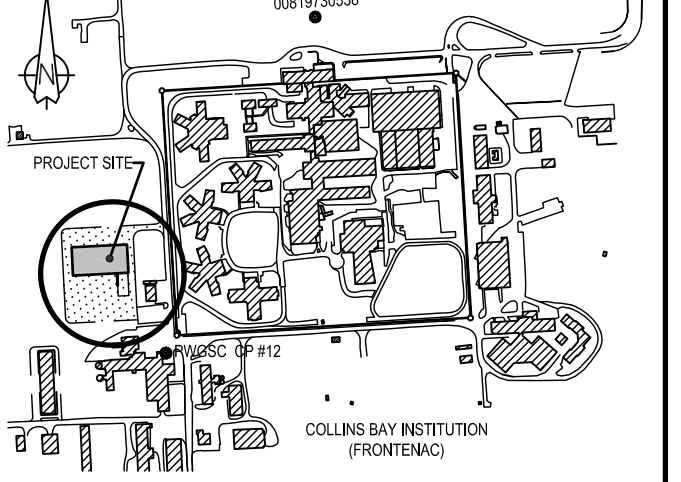
A	A detail no. n° du détail	A
B	B location drawing no. sur dessin n°	B
C	C drawing no. dessin n°	C

project
**CSC MULTI-PURPOSE BUILDING
CBI MINIMUM INSTITUTION (FRONTENAC)**
KINGSTON, ONTARIO

drawing
**SITE PLAN,
LIMIT OF CONTRACT AREA AND
CONSTRUCTION FACILITIES**

designed	Mackay-Lyons Sweetapple	compé
date	2012/01/01	(yyyy/mm/dd)
drawn	BML	dessiné
date	2012/11/16	(yyyy/mm/dd)
reviewed	DC / GF	examiné
date	2015/02/23	(yyyy/mm/dd)
approved	RM	approuvé
date	2015/03/12	(yyyy/mm/dd)
Tender	DUNCAN PARKER	Soumission

Project Manager / Administrateur de projets
project no. / no. du projet
R.055776.001
drawing no. / no. du dessin
A100



01	ISSUED FOR TENDER	15/03/26
revision	description	date

A	detail no. n° du détail	A
B	location drawing no. sur dessin n°	B
C	C drawing no. dessin n°	C

project / projet
CSC MULTI-PURPOSE BUILDING
CBI MINIMUM INSTITUTION (FRONTENAC)
 KINGSTON, ONTARIO

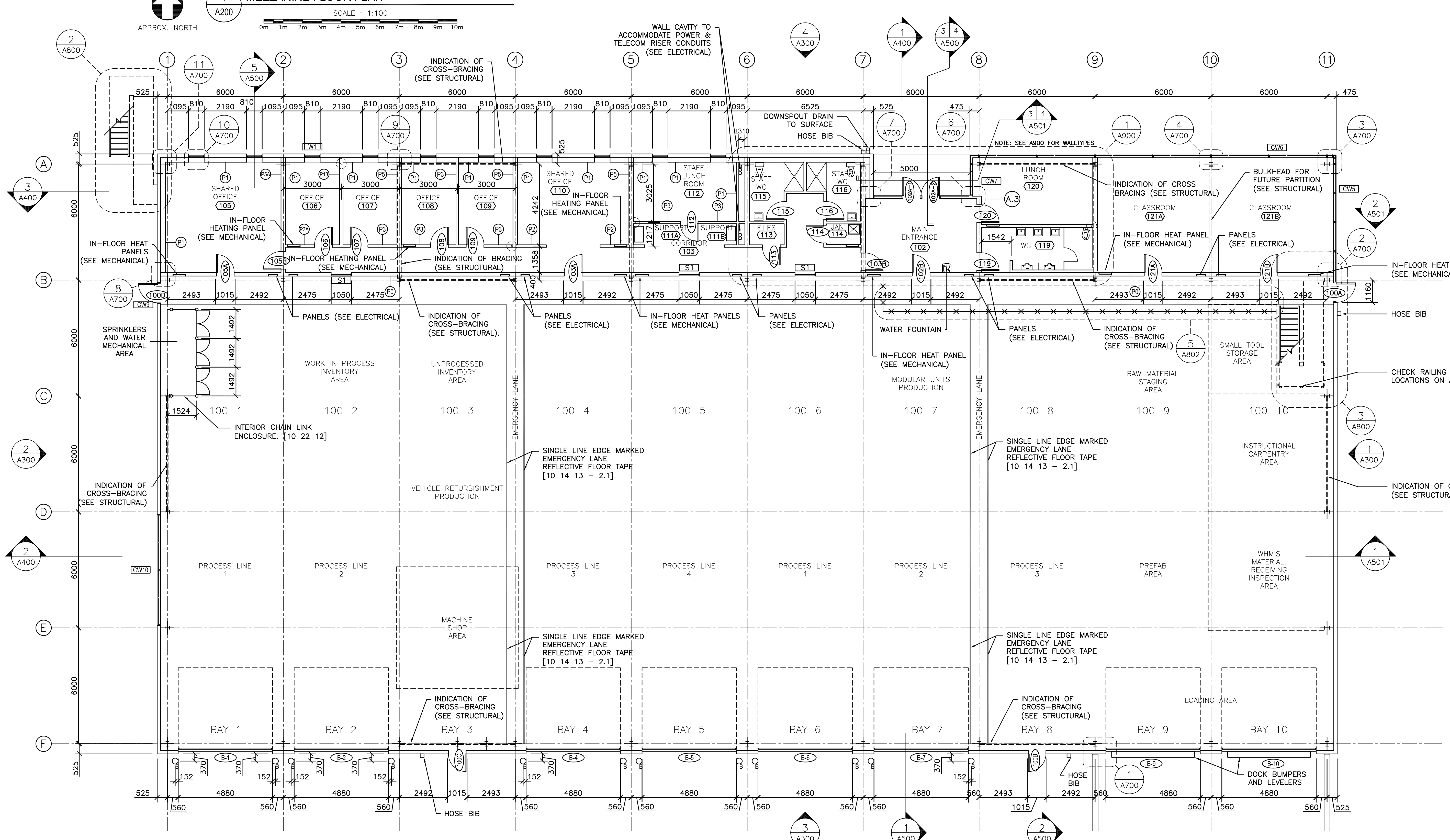
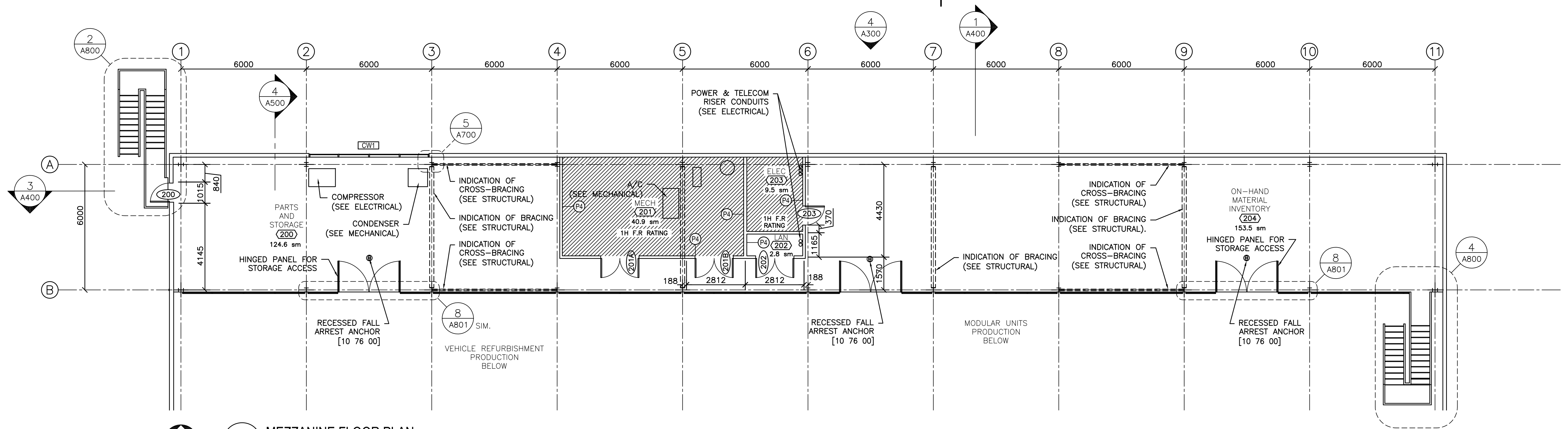
drawing / dessin
FLOOR PLANS

designed	Mackay-Lyons Sweetapple	conçu
date	2012/01/01	(yyyy/mm/dd)
drawn	BML	dessiné
date	2012/11/16	(yyyy/mm/dd)
reviewed	DC / GF	examiné
date	2015/02/23	(yyyy/mm/dd)
approved	RM	approuvé
date	2015/03/12	(yyyy/mm/dd)
Tender	DUNCAN PARKER	Soumission

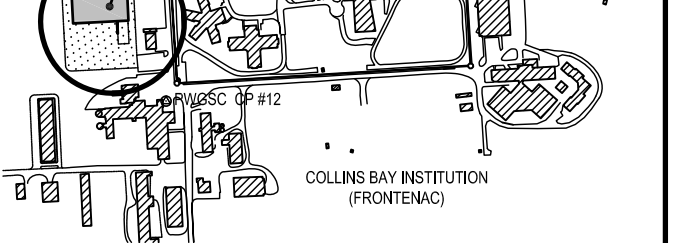
Project Manager / Administrateur de projets
 project no. / no. du projet
R.055776.001
 drawing no. / no. du dessin
A200

LEGEND

- FIRE RESISTANT RATED ZONE
- EMERGENCY LANE
- FOR INTERIOR PARTITION TYPES REFER TO PARTITION SCHEDULE ON LEGEND / GLOSSARY PAGE
- PLUMBING RISERS TO BE LOCATED WITHIN WALL CAVITY
- BOLLARD
- LOCATION OF IN-FLOOR POST SLEEVES (FENCE N.I.C.)



08.07.2014
 1403-A200 FloorPlan-004.dwg
 PWGSC B1 (1000x707)



revision	description	date
01	ISSUED FOR TENDER	15/03/26

A	A detail no. n° du détail	A
B	B location drawing no. sur dessin n°	B
C	C drawing no. dessin n°	C

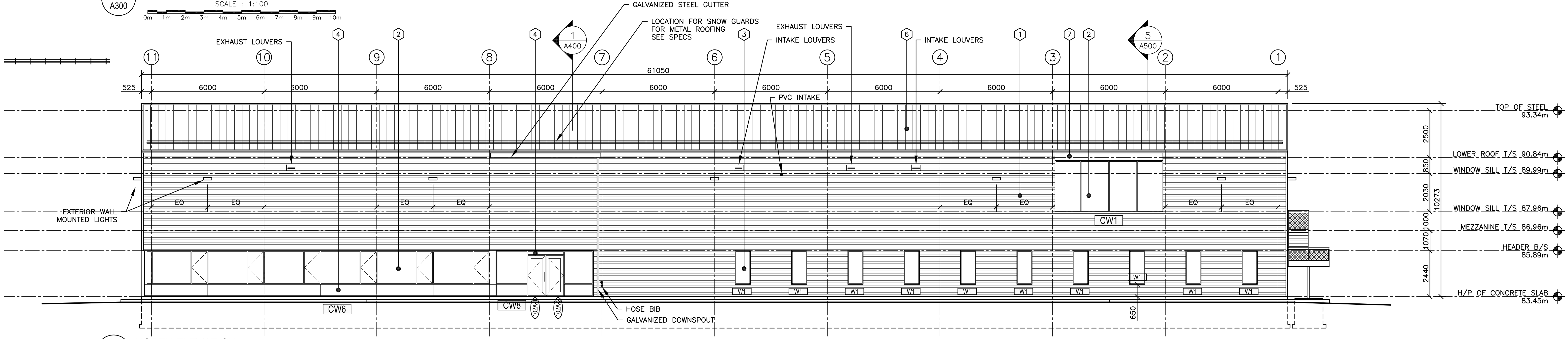
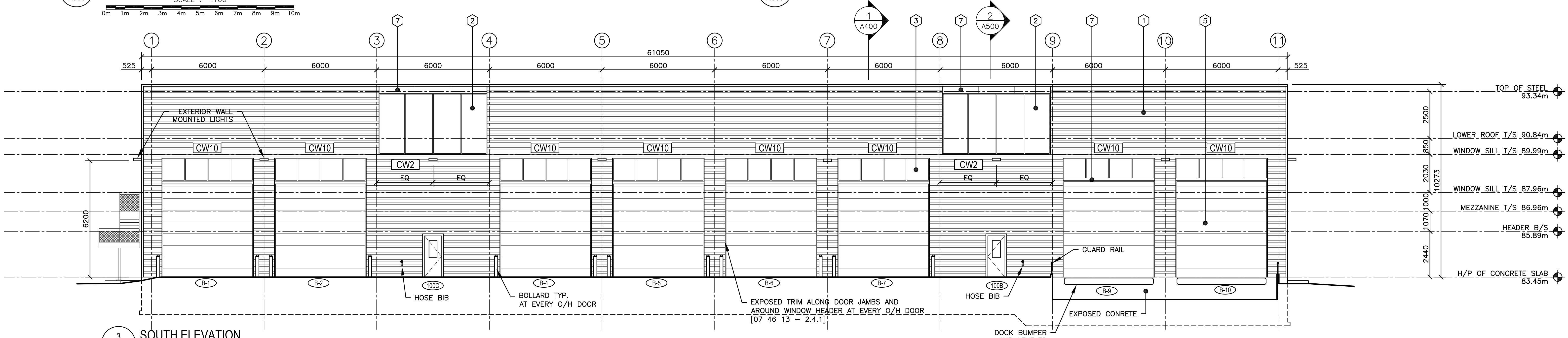
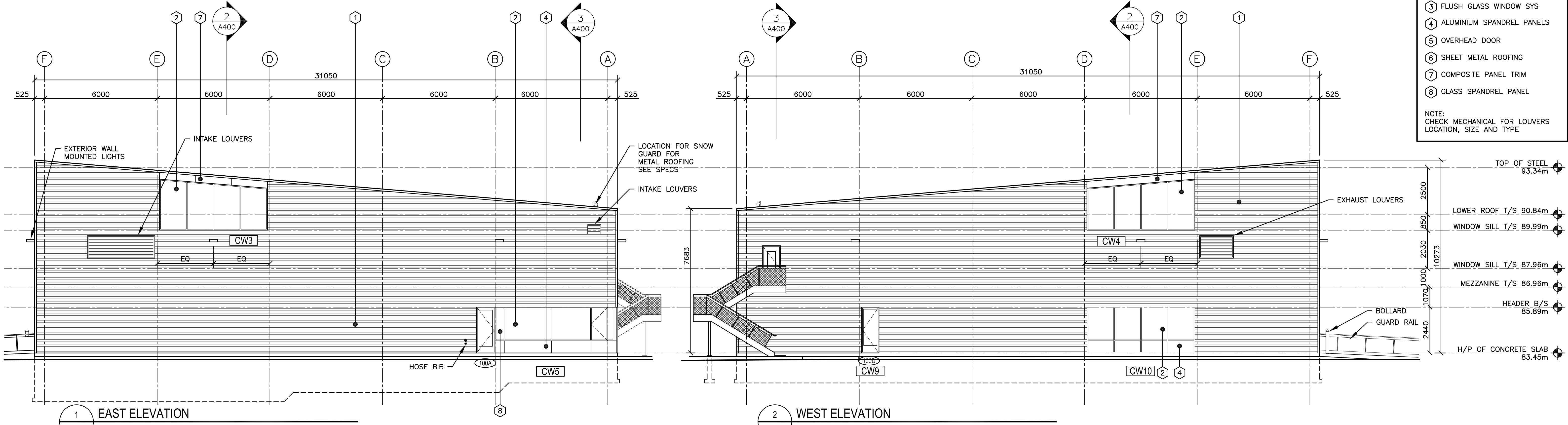
project: **CSC MULTI-PURPOSE BUILDING
CBI MINIMUM INSTITUTION (FRONTENAC)**
KINGSTON, ONTARIO

drawing: **BUILDING ELEVATIONS**

designed	Mackay-Lyons Sweetapple	compé
date	2012/01/01	(yyyy/mm/dd)
drawn	BML	dessiné
date	2012/11/16	(yyyy/mm/dd)
reviewed	DC / GF	examiné
date	2015/02/23	(yyyy/mm/dd)
approved	RM	approuvé
date	2015/03/12	(yyyy/mm/dd)
tender	DUNCAN PARKER	Soumission

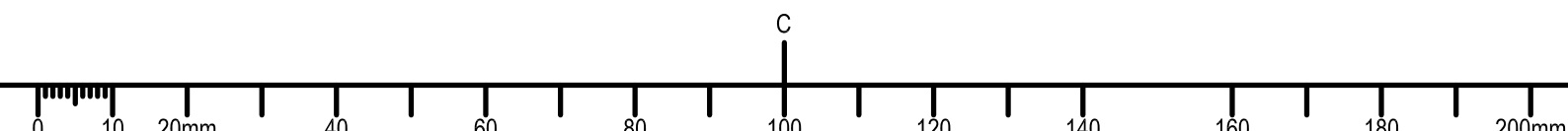
Project Manager: **R.055776.001**
no. du projet
drawing no.: **A300**
no. du dessin

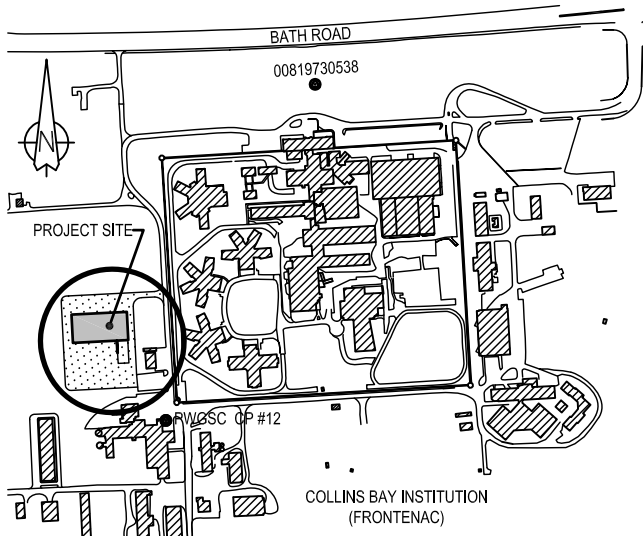
- KEYNOTES**
- 1 CORRUGATED METAL SIDING
 - 2 STORE FRONT CURTAIN WALL
 - 3 FLUSH GLASS WINDOW SYS
 - 4 ALUMINIUM SPANDREL PANELS
 - 5 OVERHEAD DOOR
 - 6 SHEET METAL ROOFING
 - 7 COMPOSITE PANEL TRIM
 - 8 GLASS SPANDREL PANEL
- NOTE:
CHECK MECHANICAL FOR LOUVERS
LOCATION, SIZE AND TYPE



08.07.2014

1403-A300 Elevation-005.dwg





01	ISSUED FOR TENDER	15/03/26
----	-------------------	----------

A	detail no. n° du détail	A
B	location drawing no. sur dessin n°	B
C	drawing no. dessin n°	C

project project
CSC MULTI-PURPOSE BUILDING
CBI MINIMUM INSTITUTION (FRONTENAC)
KINGSTON, ONTARIO

drawing dessin

WALL SECTIONS

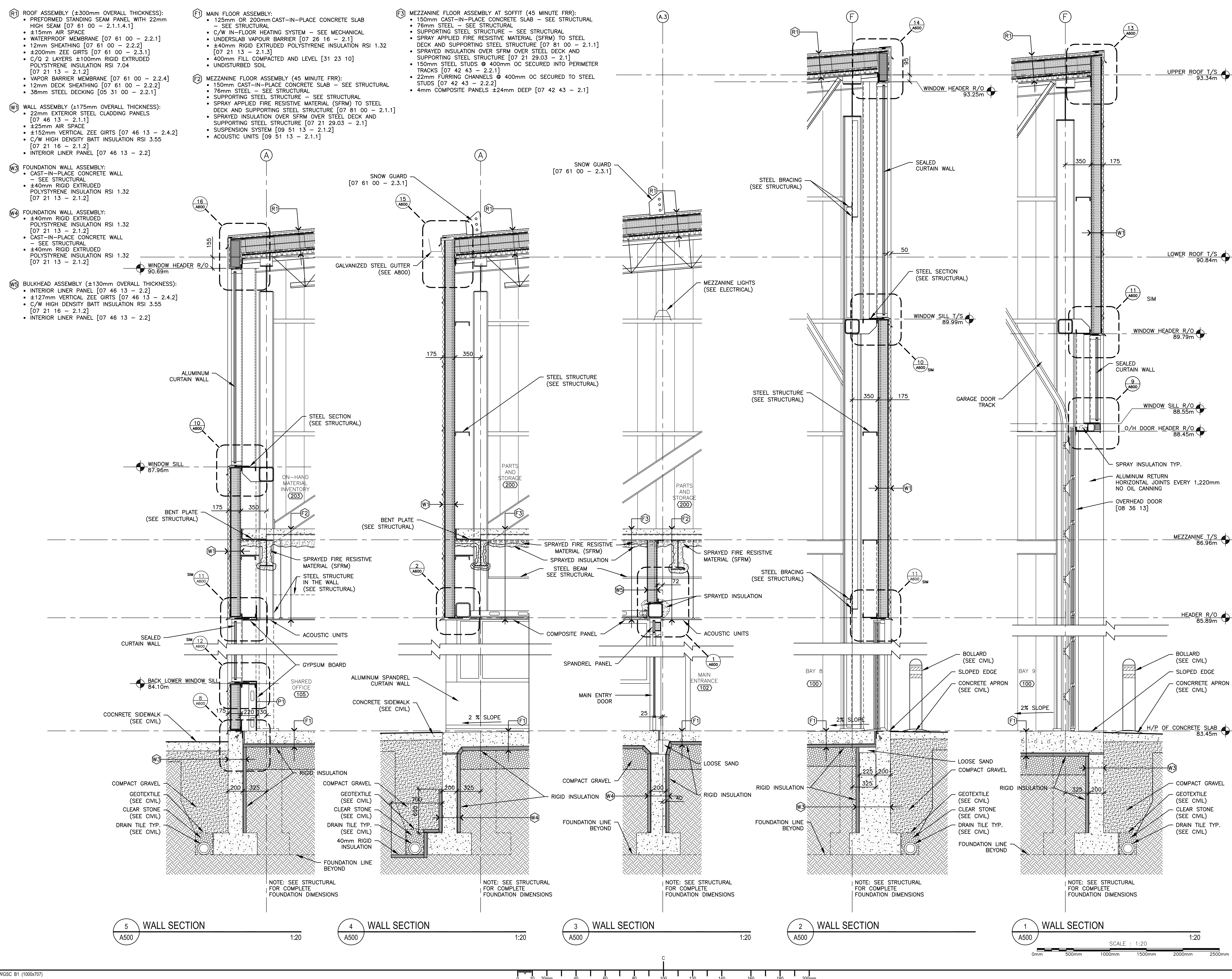
designed	Mackay-Lyons Sweetapple	compé
date	2012/01/01	(yyyy/mm/dd)
drawn	BML	dessiné
date	2012/11/16	(yyyy/mm/dd)
reviewed	DC / CF	examiné
date	2015/02/23	(yyyy/mm/dd)
approved	RM	approuvé
date	2015/03/12	(yyyy/mm/dd)
Tender	DUNCAN PARKER	Sourmission

Project Manager / Administrateur de projets
project no. / no. du projet

R.055776.001

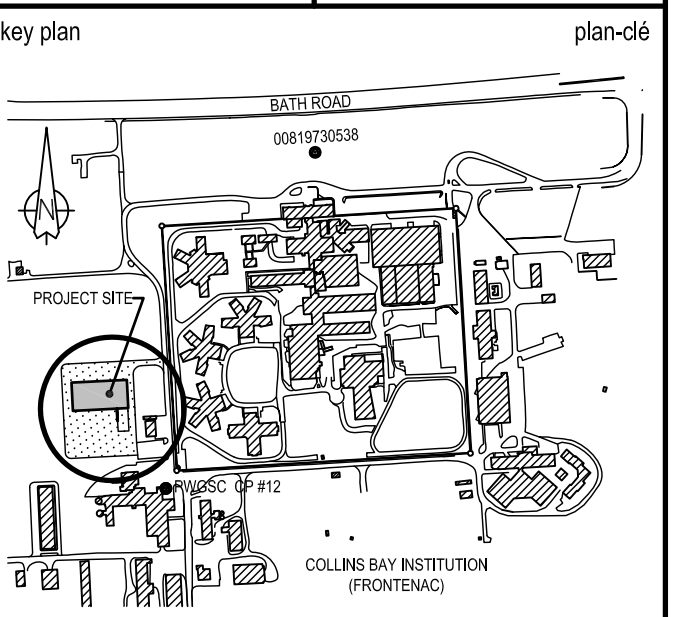
drawing no. / no. du dessin

A500

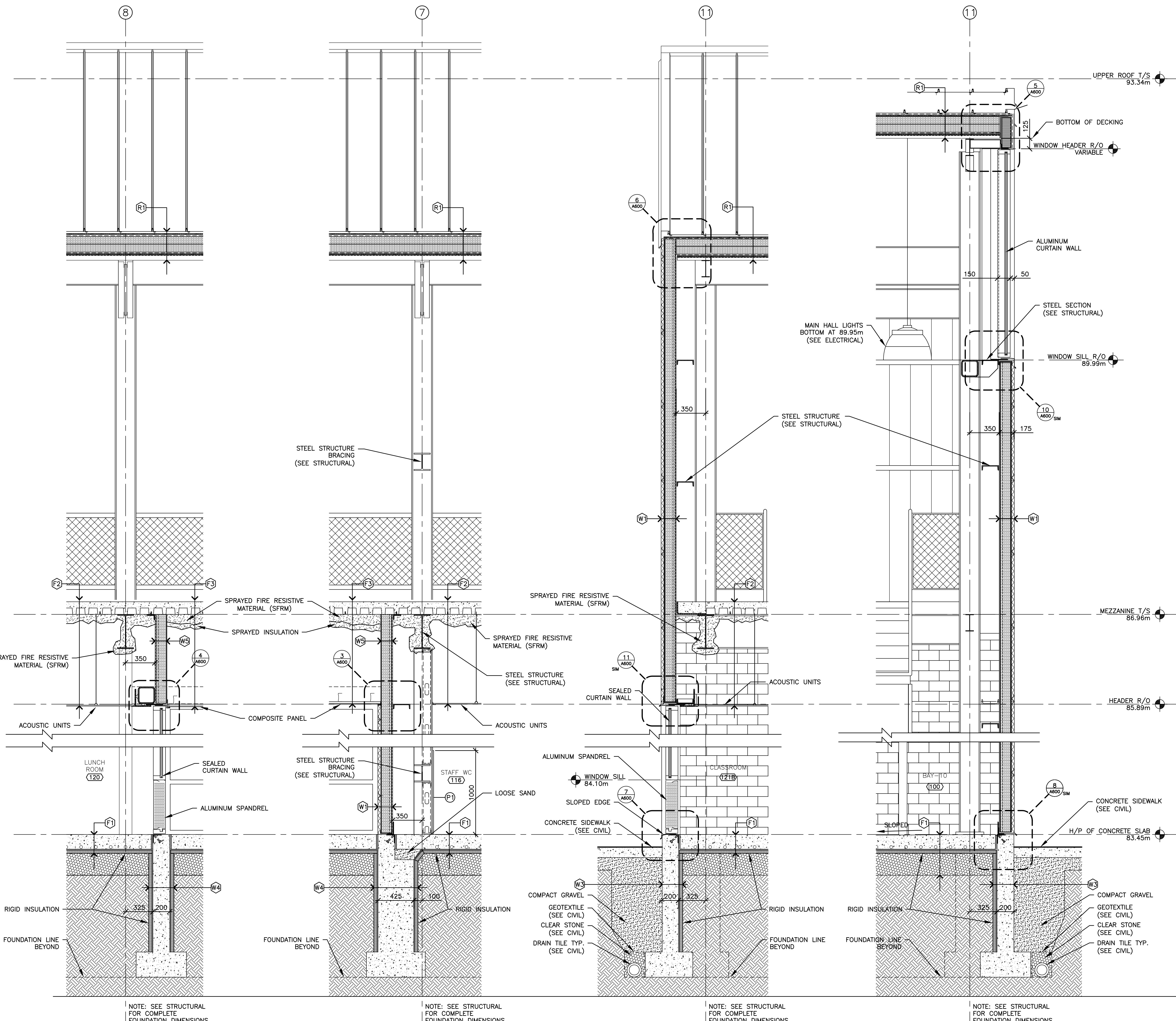


08.07.2014

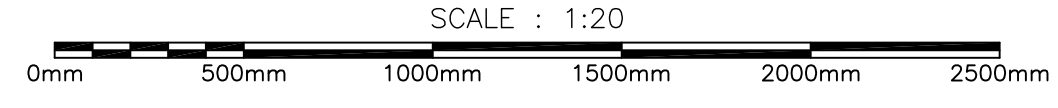
1403-A500_A501 WallSection-003.dwg



- KEYNOTES**
- (R1) ROOF ASSEMBLY (±300mm OVERALL THICKNESS):
 - PREFORMED STANDING SEAM PANEL WITH 22mm HIGH SEAM [07 61 00 - 2.1.4.1]
 - ±15mm AIR SPACE
 - WATERPROOF MEMBRANE [07 61 00 - 2.2.1]
 - 12mm SHEATHING [07 61 00 - 2.2.2]
 - ±200mm ZEE GIRTS [07 61 00 - 2.3.1]
 - C/Q 2 LAYERS ±100mm RIGID EXTRUDED POLYSTYRENE INSULATION RSI 7.04 [07 21 13 - 2.1.2]
 - VAPOR BARRIER MEMBRANE [07 61 00 - 2.2.4]
 - 12mm DECK SHEATHING [07 61 00 - 2.2.2]
 - 38mm STEEL DECKING [05 31 00 - 2.2.1]
 - (W1) WALL ASSEMBLY (±175mm OVERALL THICKNESS):
 - 22mm EXTERIOR STEEL CLADDING PANELS [07 46 13 - 2.1.1]
 - ±25mm AIR SPACE
 - ±152mm VERTICAL ZEE GIRTS [07 46 13 - 2.4.2]
 - C/W HIGH DENSITY BATT INSULATION RSI 3.55 [07 21 16 - 2.1.2]
 - INTERIOR LINER PANEL [07 46 13 - 2.2]
 - (W3) FOUNDATION WALL ASSEMBLY:
 - CAST-IN-PLACE CONCRETE WALL - SEE STRUCTURAL
 - 40mm RIGID EXTRUDED POLYSTYRENE INSULATION RSI 1.32 [07 21 13 - 2.1.2]
 - (W4) FOUNDATION WALL ASSEMBLY:
 - 40mm RIGID EXTRUDED POLYSTYRENE INSULATION RSI 1.32 [07 21 13 - 2.1.2]
 - CAST-IN-PLACE CONCRETE WALL - SEE STRUCTURAL
 - 40mm RIGID EXTRUDED POLYSTYRENE INSULATION RSI 1.32 [07 21 13 - 2.1.2]
 - (W5) BULKHEAD ASSEMBLY (±130mm OVERALL THICKNESS):
 - INTERIOR LINER PANEL [07 46 13 - 2.2]
 - ±127mm VERTICAL ZEE GIRTS [07 46 13 - 2.4.2]
 - C/W HIGH DENSITY BATT INSULATION RSI 3.55 [07 21 16 - 2.1.2]
 - INTERIOR LINER PANEL [07 46 13 - 2.2]
 - (F1) MAIN FLOOR ASSEMBLY:
 - 125mm OR 200mm CAST-IN-PLACE CONCRETE SLAB - SEE STRUCTURAL
 - C/W IN-FLOOR HEATING SYSTEM - SEE MECHANICAL
 - UNDERSLAB VAPOR BARRIER [07 26 16 - 2.1]
 - 40mm RIGID EXTRUDED POLYSTYRENE INSULATION RSI 1.32 [07 21 13 - 2.1.3]
 - 400mm FILL COMPACTED AND LEVEL [31 23 10]
 - UNDISTURBED SOIL
 - (F2) MEZZANINE FLOOR ASSEMBLY (45 MINUTE FRR):
 - 150mm CAST-IN-PLACE CONCRETE SLAB - SEE STRUCTURAL
 - 76mm STEEL - SEE STRUCTURAL
 - SUPPORTING STEEL STRUCTURE - SEE STRUCTURAL
 - SPRAY APPLIED FIRE RESISTIVE MATERIAL (SFRM) TO STEEL DECK AND SUPPORTING STEEL STRUCTURE [07 81 00 - 2.1.1]
 - SPRAYED INSULATION OVER SFRM OVER STEEL DECK AND SUPPORTING STEEL STRUCTURE [07 21 29.03 - 2.1]
 - SUSPENSION SYSTEM [09 51 13 - 2.1.2]
 - ACOUSTIC UNITS [09 51 13 - 2.1.1]
 - (F3) MEZZANINE FLOOR ASSEMBLY AT SOFFIT (45 MIN. FRR):
 - 150mm CAST-IN-PLACE CONCRETE SLAB - SEE STRUCTURAL
 - 76mm STEEL - SEE STRUCTURAL
 - SUPPORTING STEEL STRUCTURE - SEE STRUCTURAL
 - SPRAY APPLIED FIRE RESISTIVE MATERIAL (SFRM) TO STEEL DECK AND SUPPORTING STEEL STRUCTURE [07 81 00 - 2.1.1]
 - SPRAYED INSULATION OVER SFRM OVER STEEL DECK AND SUPPORTING STEEL STRUCTURE [07 21 29.03 - 2.1]
 - 150mm STEEL STUDS @ 400mm OC SECURED INTO PERIMETER TRACKS [07 42 43 - 2.2.1]
 - 22mm FURRING CHANNELS @ 400mm OC SECURED TO STEEL STUDS [07 42 43 - 2.2.2]
 - 4mm COMPOSITE PANELS ±24mm DEEP [07 42 43 - 2.1]



4 WALL SECTION A501 1:20
3 WALL SECTION A501 1:20
2 WALL SECTION A501 1:20
1 WALL SECTION A501 1:20



08.07.2014

1403-A500_A501 WallSection-003.dwg

01	ISSUED FOR TENDER	15/03/26
revision	description	date

A	A detail no. n° du détail	A
B	B location drawing no. sur dessin n°	B
C	C drawing no. dessin n°	C

project
CSC MULTI-PURPOSE BUILDING
CBI MINIMUM INSTITUTION (FRONTENAC)
 KINGSTON, ONTARIO

drawing
 dessin

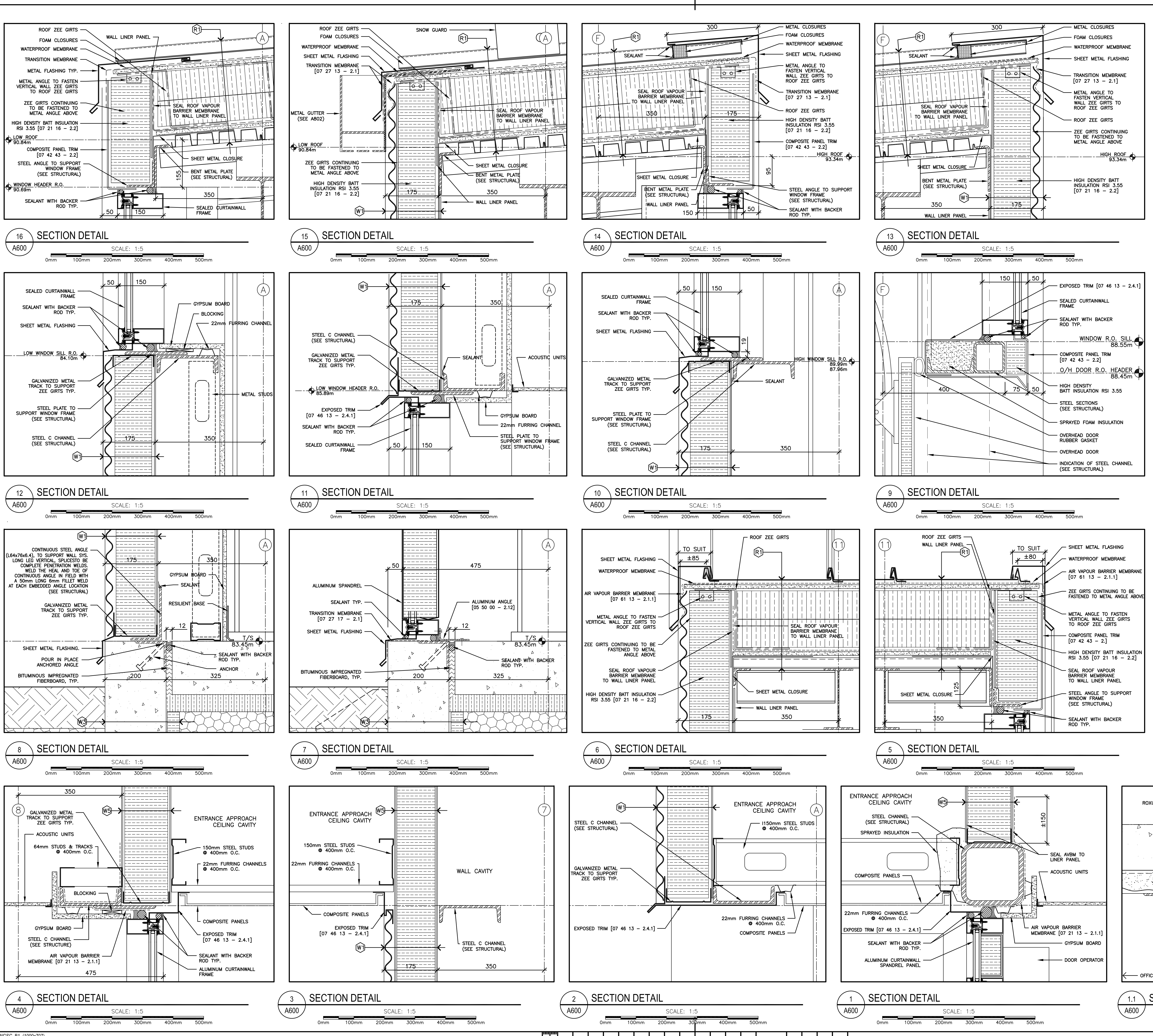
WALL SECTIONS

designed	Mackay-Lyons Sweetapple	compé
date	2012/01/01	(yyyy/mm/dd)
drawn	BML	dessiné
date	2012/11/16	(yyyy/mm/dd)
reviewed	DC / GF	examiné
date	2015/02/23	(yyyy/mm/dd)
approved	RM	approuvé
date	2015/03/12	(yyyy/mm/dd)
Tender	DUNCAN PARKER	Soumission

Project Manager / Administrateur de projets
 project no. / no. du projet

R.055776.001

drawing no. / no. du dessin
A501



KEYNOTES

(R1) ROOF ASSEMBLY (±300mm OVERALL THICKNESS):

- PREFORMED STANDING SEAM PANEL WITH 22mm HIGH SEAM [07 61 00 - 2.1.1.4.1]
- ±15mm AIR SPACE
- WATERPROOF MEMBRANE [07 61 00 - 2.2.1]
- 12mm SHEATHING [07 61 00 - 2.2.2]
- ±200mm ZEE GIRTS [07 61 00 - 2.3.1]
- C/O 2 LAYERS ±100mm RIGID EXTRUDED POLYSTYRENE INSULATION RSI 7.04 [07 21 12 - 2.1.2]
- VAPOR BARRIER MEMBRANE [07 61 00 - 2.2.4]
- 12mm DECK SHEATHING [07 61 00 - 2.2.2]
- 38mm STEEL DECKING [05 31 00 - 2.2.1]

(W1) WALL ASSEMBLY (±175mm OVERALL THICKNESS):

- 22mm EXTERIOR STEEL CLADDING PANELS [07 46 13 - 2.1.1]
- ±25mm AIR SPACE
- ±152mm VERTICAL ZEE GIRTS [07 46 13 - 2.4.2]
- C/W HIGH DENSITY BATT INSULATION RSI 3.55 [07 21 16 - 2.2]
- INTERIOR LINER PANEL [07 46 13 - 2.2]

(W3) FOUNDATION WALL ASSEMBLY:

- CAST-IN-PLACE CONCRETE WALL - SEE STRUCTURAL
- ±40mm RIGID EXTRUDED POLYSTYRENE INSULATION RSI 1.32 [07 21 12 - 2.1.2]

(W5) BULKHEAD ASSEMBLY (±130mm OVERALL THICKNESS):

- INTERIOR LINER PANEL [07 46 13 - 2.2]
- ±127mm VERTICAL ZEE GIRTS [07 46 13 - 2.4.2]
- C/W HIGH DENSITY BATT INSULATION RSI 3.55 [07 21 16 - 2.2]
- INTERIOR LINER PANEL [07 46 13 - 2.2]

Public Works and Government Services Canada / Travaux publics et Services gouvernementaux Canada

Real Property Operations Branch
Real Property Operations Solutions
Direction générale des opérations immobilières
Solutions - Opérations immobilières

Project Delivery & Professional and Technical Services
Exécution de projets et Services experts/consils techniques

Watson MacEwen Teramura Architects
400-116 Lisgar Street
Ottawa, ON K2P 0C2
1613.232.0330
1613.232.6253

Structural Engineers
Halsall Associates
4001-210 Gladstone Avenue
Kingston, Ontario K2P 0V6
613.237.2462

Mechanical / Electrical Eng.
Bouthillier Parizeau & Associates
100 - 1960 Robertson Road
Ottawa, ON K2H 5B9
613.596.6454

Civil Engineers
WSP Group
201-1224 Gardiners Road
Kingston, Ontario K7P 0G2
613.634.7373

IT-Telecommunications
The Attain Group
208-1600 Woodward Drive
Ottawa, ON K2C 3R7
613.739.9424

key plan plan-06

01 ISSUED FOR TENDER 15/03/16

revision description date

A detail no. n° du détail
B location drawing no. sur dessin n°
C drawing no. dessin n°

project project

**CSC MULTI-PURPOSE BUILDING
CBI MINIMUM INSTITUTION (FRONTENAC)**
KINGSTON, ONTARIO

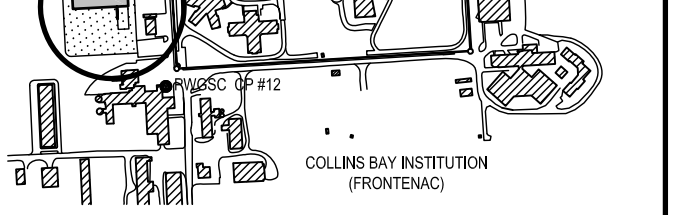
drawing dessin

designed Mackay-Lyons Sweetapple compu
date 2012/01/01 (yyyy/mm/dd)
drawn BML dessin
date 2012/11/16 (yyyy/mm/dd)
reviewed DC / CF examiné
date 2015/02/23 (yyyy/mm/dd)
approved RM approuvé
date 2015/03/12 (yyyy/mm/dd)
Tender DUNCAN PARKER Soumission

Project Manager Administrateur de projets
project no. no. du projet

R.055776.001
drawing no. no. du dessin
A600

08.07.2014
1403-A600 SectionDetails-003.dwg
PWGSC B1 (1000x707)



01	ISSUED FOR TENDER	15/03/26
revision	description	date

A	A detail no. n° du détail	A
B	B location drawing no. sur dessin n°	B
C	C drawing no. dessin n°	C

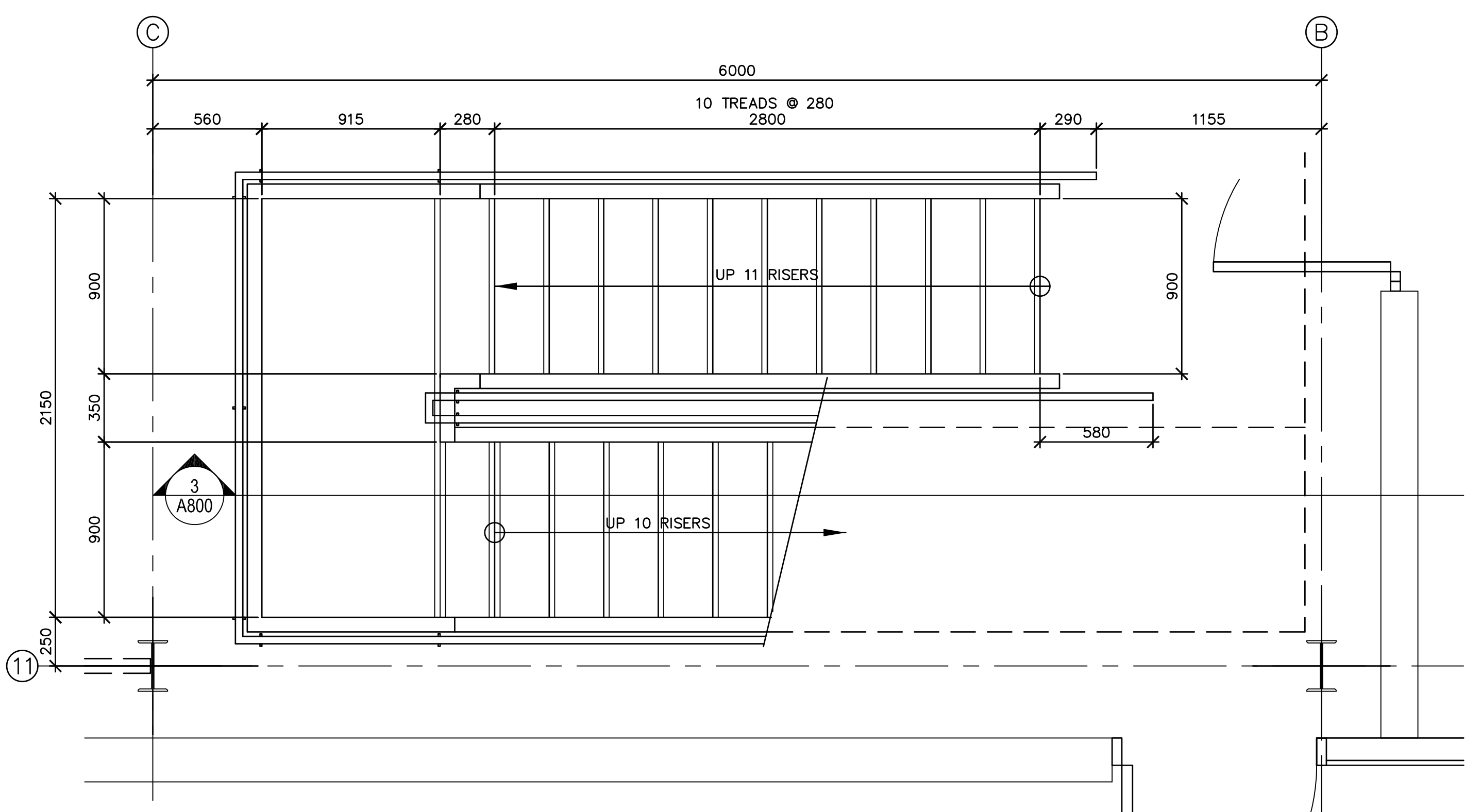
project
**CSC MULTI-PURPOSE BUILDING
CBI MINIMUM INSTITUTION (FRONTENAC)**
KINGSTON, ONTARIO

drawing
MISCELLANEOUS METALS

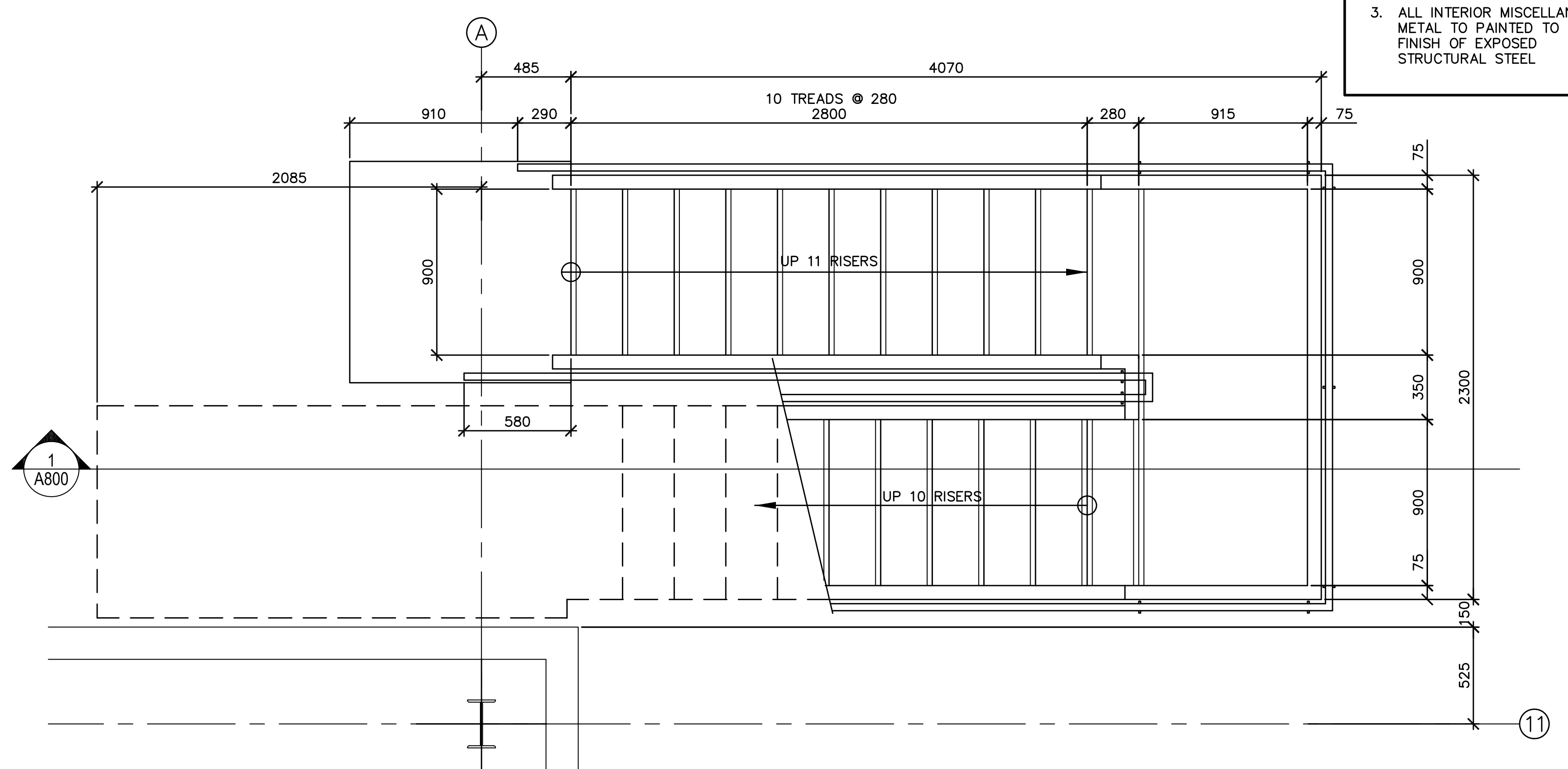
designed	Mackay-Lyons Sweetapple	compu
date	2012/01/01	(yyyy/mm/dd)
drawn	BML	dessiné
date	2012/11/16	(yyyy/mm/dd)
reviewed	DC / CF	examiné
date	2015/02/23	(yyyy/mm/dd)
approved	RM	approuvé
date	2015/03/12	(yyyy/mm/dd)
Tender	DUNCAN PARKER	Soumission

Project Manager / Administrateur de projets
no. du projet
R.055776.001
drawing no. / no. du dessin
A800

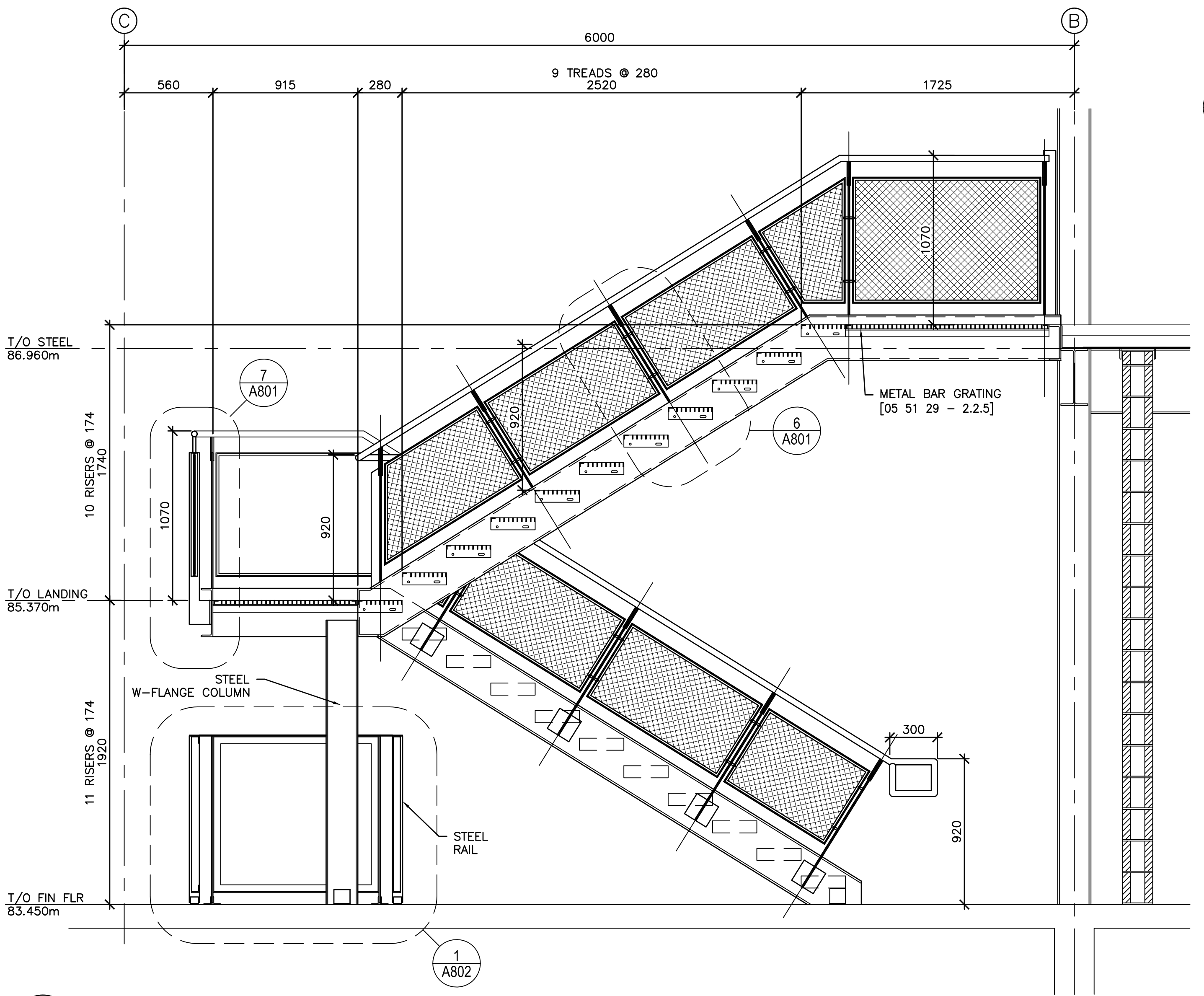
- GENERAL NOTES**
- EXTERIOR STAIRS SHALL BE BOLTED TO BUILDING FOR FUTURE DISASSEMBLY AND RELOCATION
 - ALL STEEL FOR EXTERIOR APPLICATIONS TO BE GALVANIZED FINISH
 - ALL INTERIOR MISCELLANEOUS METAL TO PAINTED TO MATCH FINISH OF EXPOSED STRUCTURAL STEEL



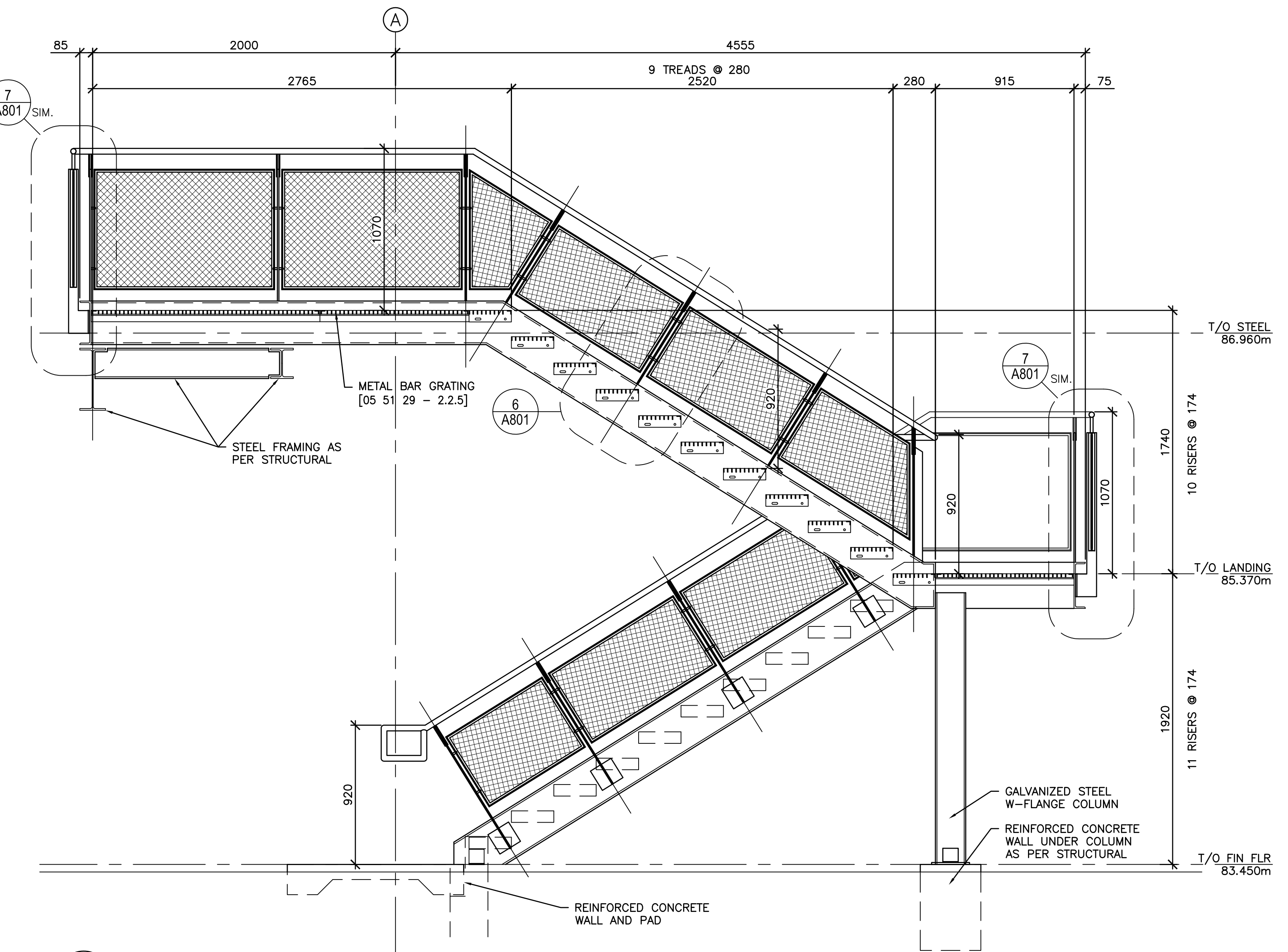
4 STAIR PLAN
A800
SCALE : 1:20
0mm 500mm 1000mm 1500mm 2000mm 2500mm



2 STAIR PLAN
A800
SCALE : 1:20
0mm 500mm 1000mm 1500mm 2000mm 2500mm



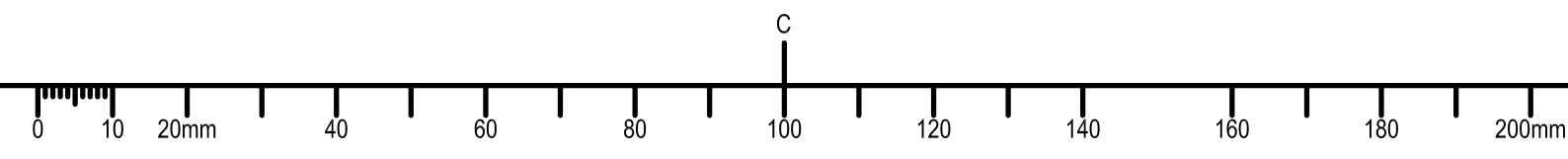
3 STAIR SECTION
A800
SCALE : 1:20
0mm 500mm 1000mm 1500mm 2000mm 2500mm

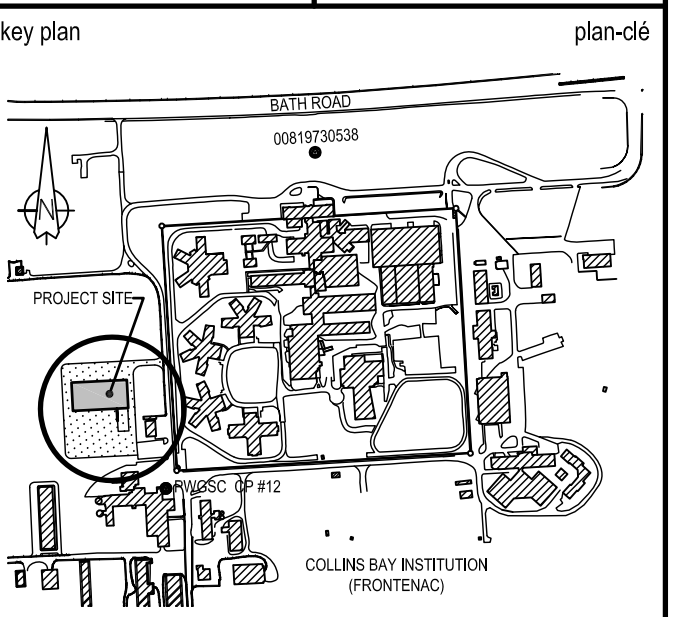
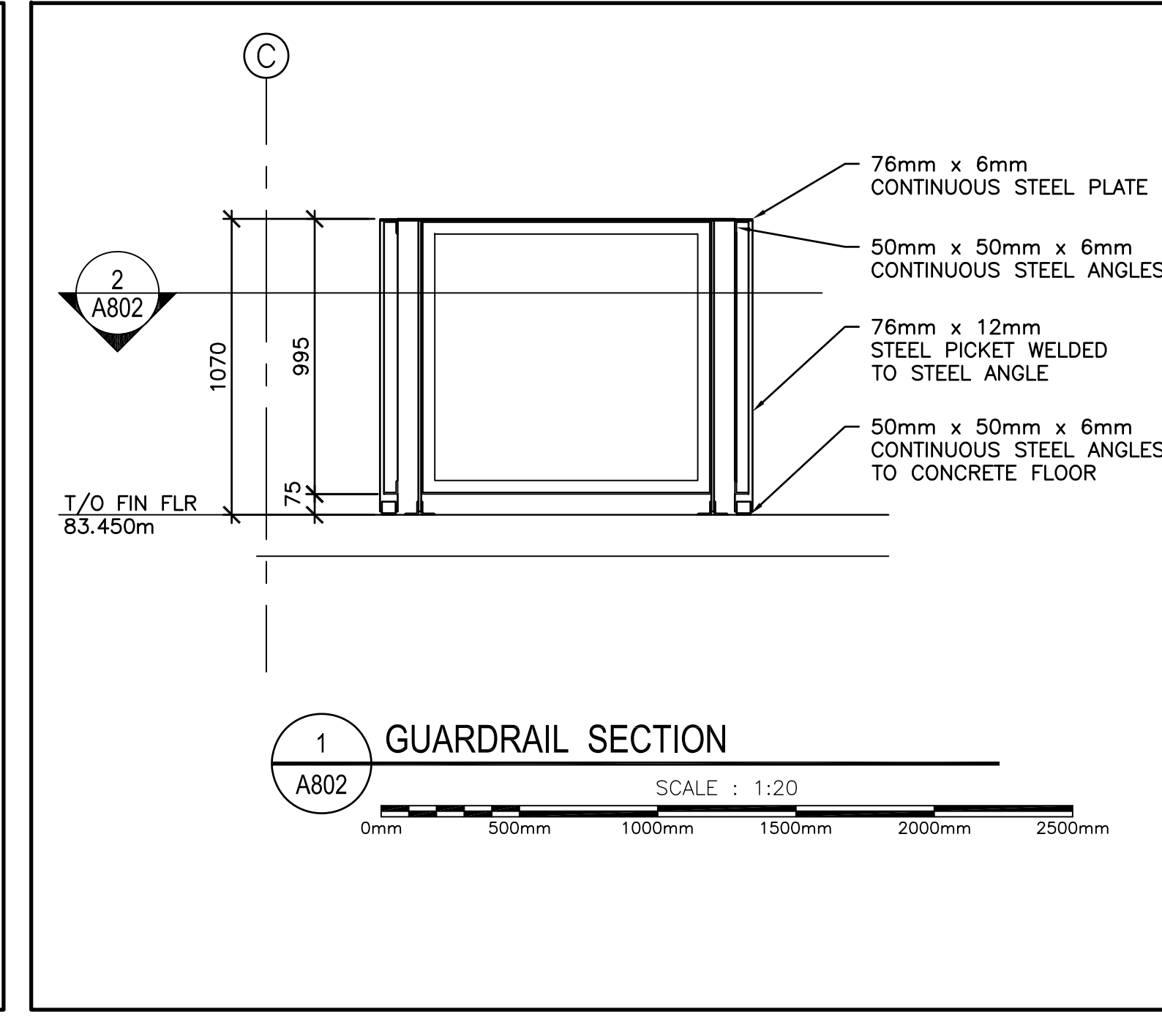
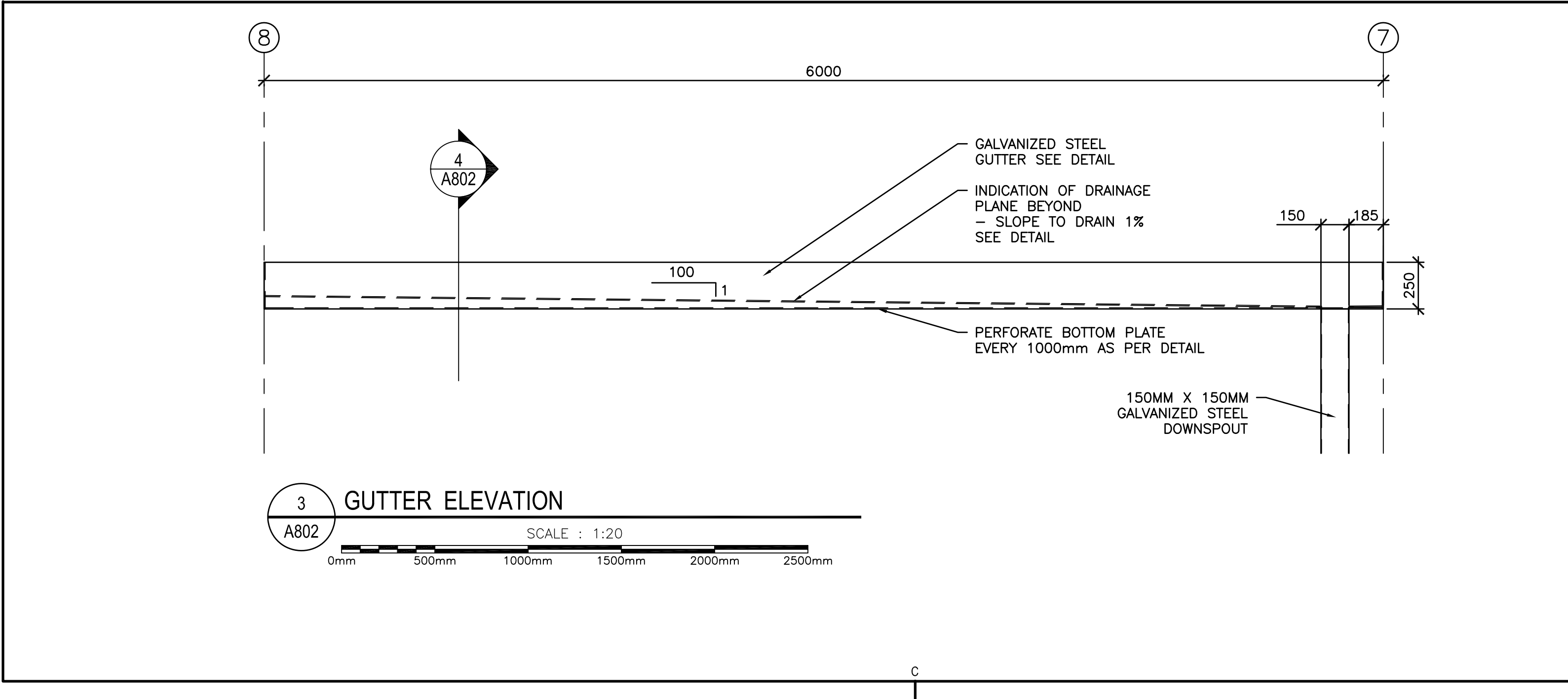
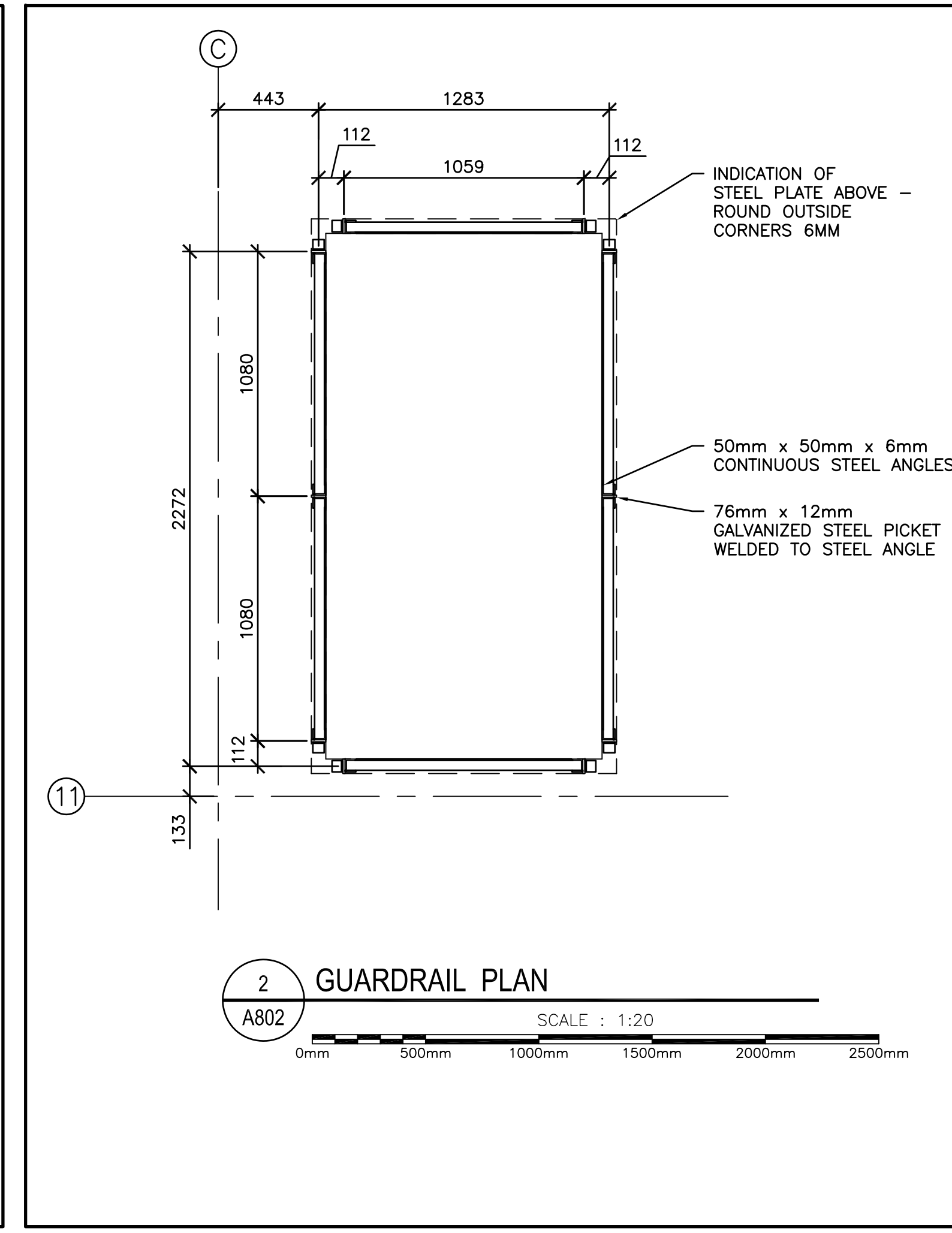
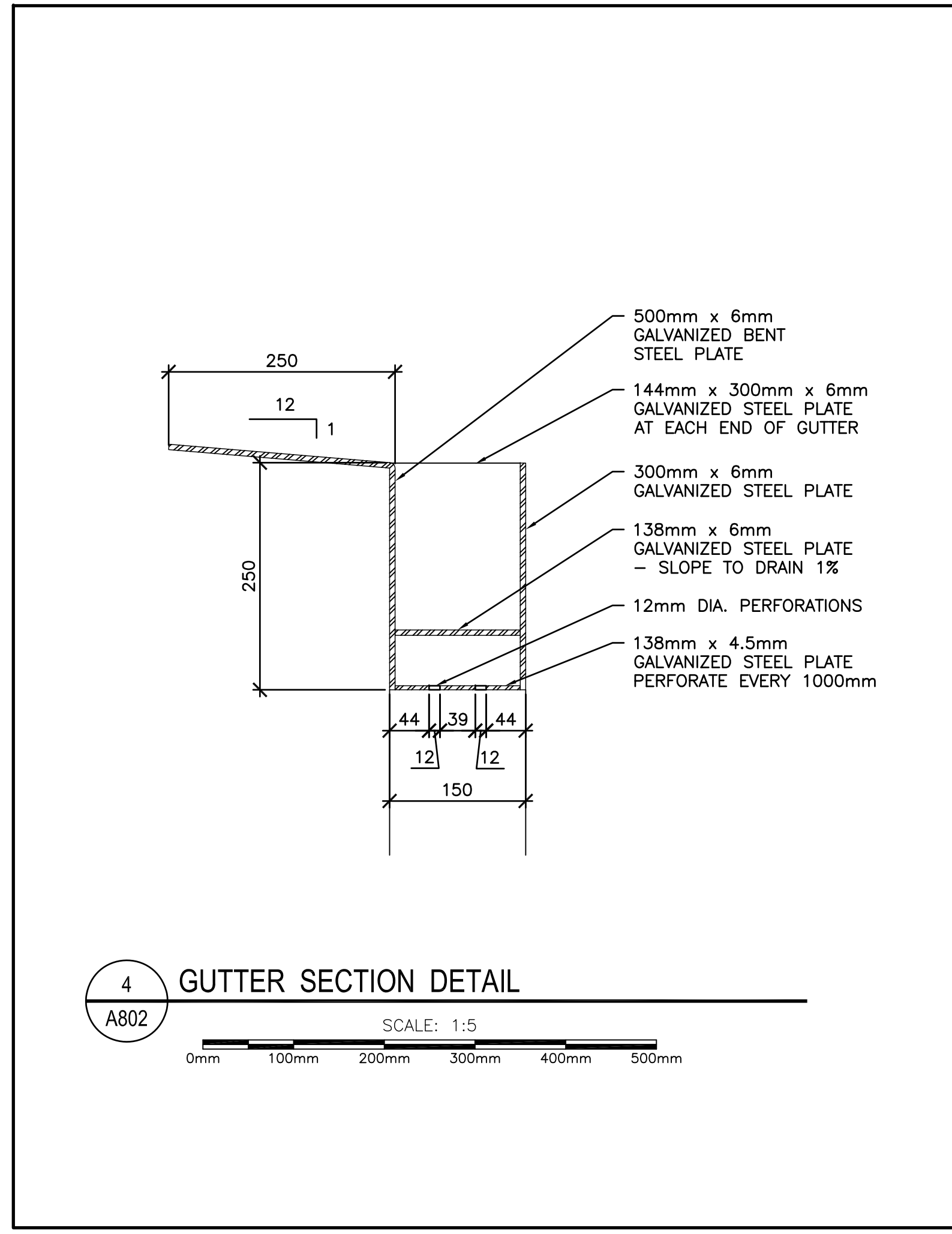
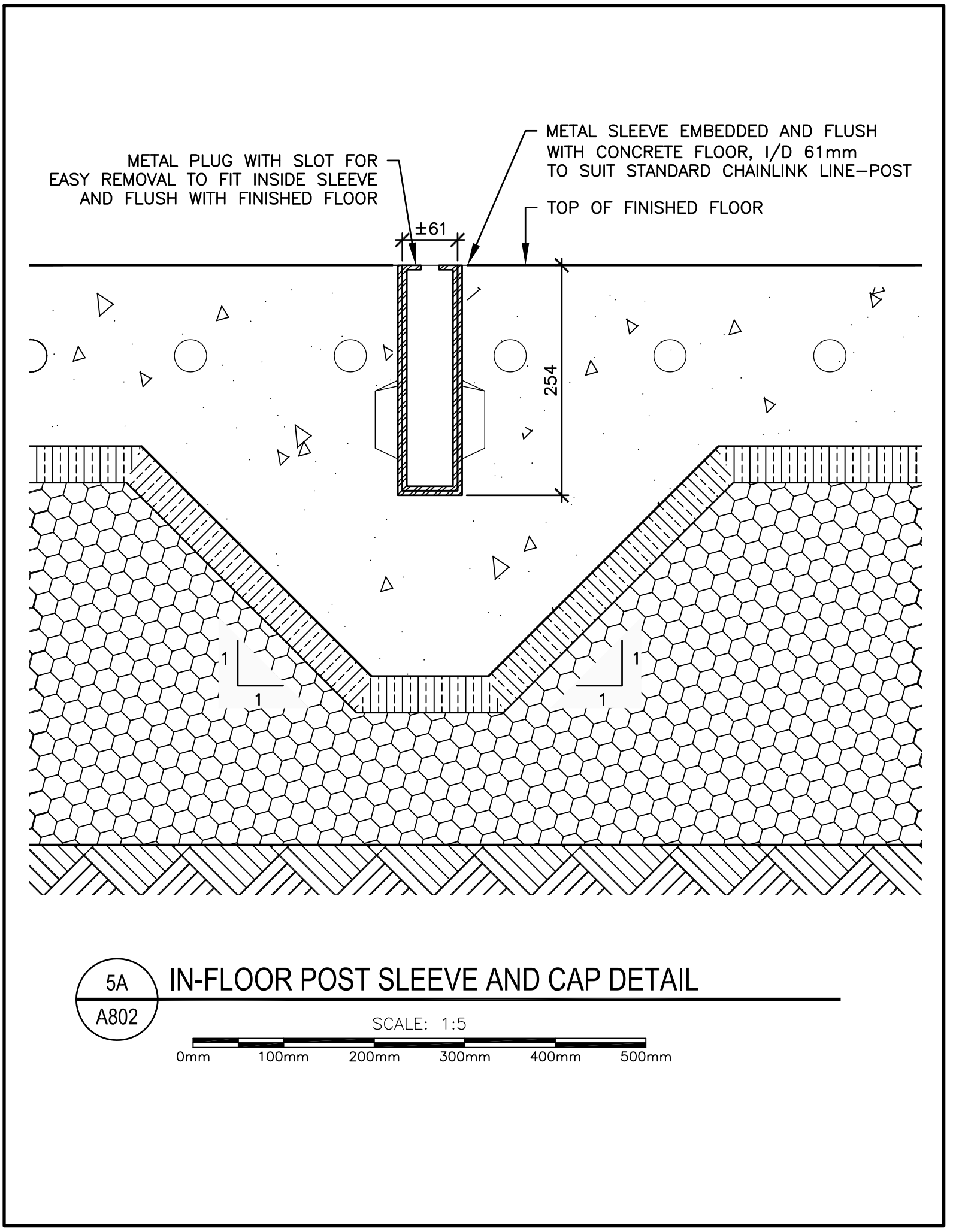
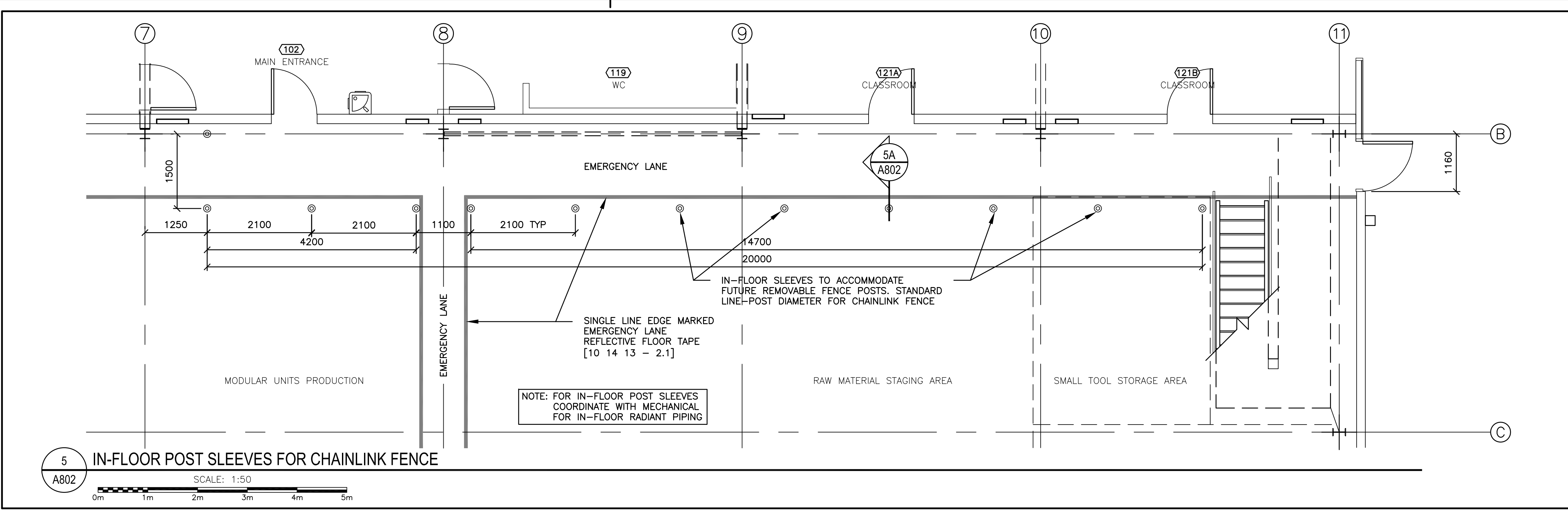


1 STAIR SECTION
A800
SCALE : 1:20
0mm 500mm 1000mm 1500mm 2000mm 2500mm

08.07.2014

1403-A800_A802_MiscDetails-004.dwg





revision	description	date
01	ISSUED FOR TENDER	15/03/26

A	B	C
detail no. n° du détail	location drawing no. sur dessin n°	drawing no. dessin n°

project / projet
CSC MULTI-PURPOSE BUILDING
CBI MINIMUM INSTITUTION (FRONTENAC)
 KINGSTON, ONTARIO

drawing / dessin
MISCELLANEOUS METALS

designed	drawn	date	reviewed	approved	date	Tender
Mackay-Lyons Sweetapple	BML	2012/01/01	DC / GF	RM	2015/03/12	DUNCAN PARKER

Project Manager / Administrateur de projets
 project no. / no. du projet
R.055776.001
 drawing no. / no. du dessin
A802

08.07.2014

1403-A800_A802_MiscDetails-004.dwg

