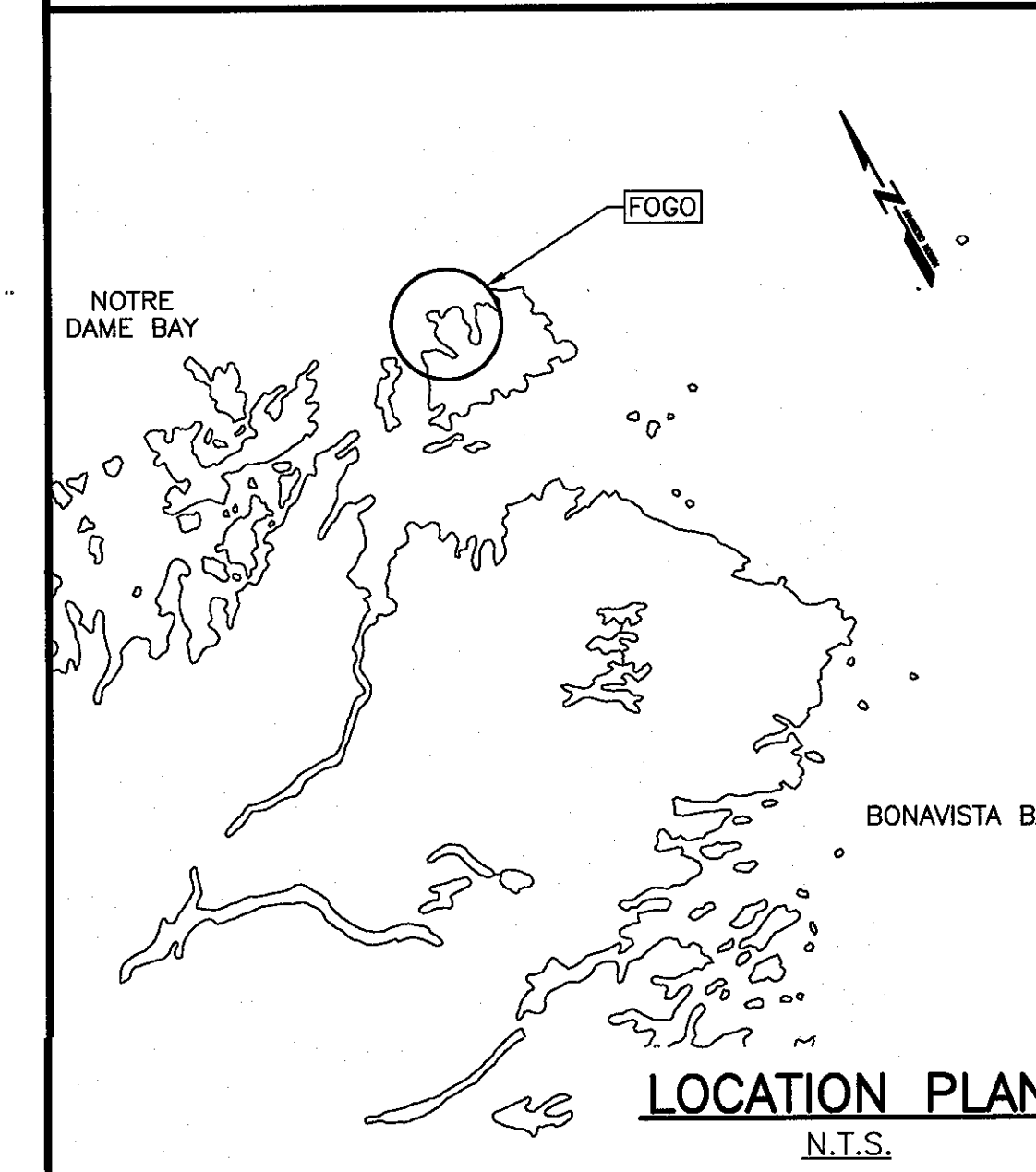
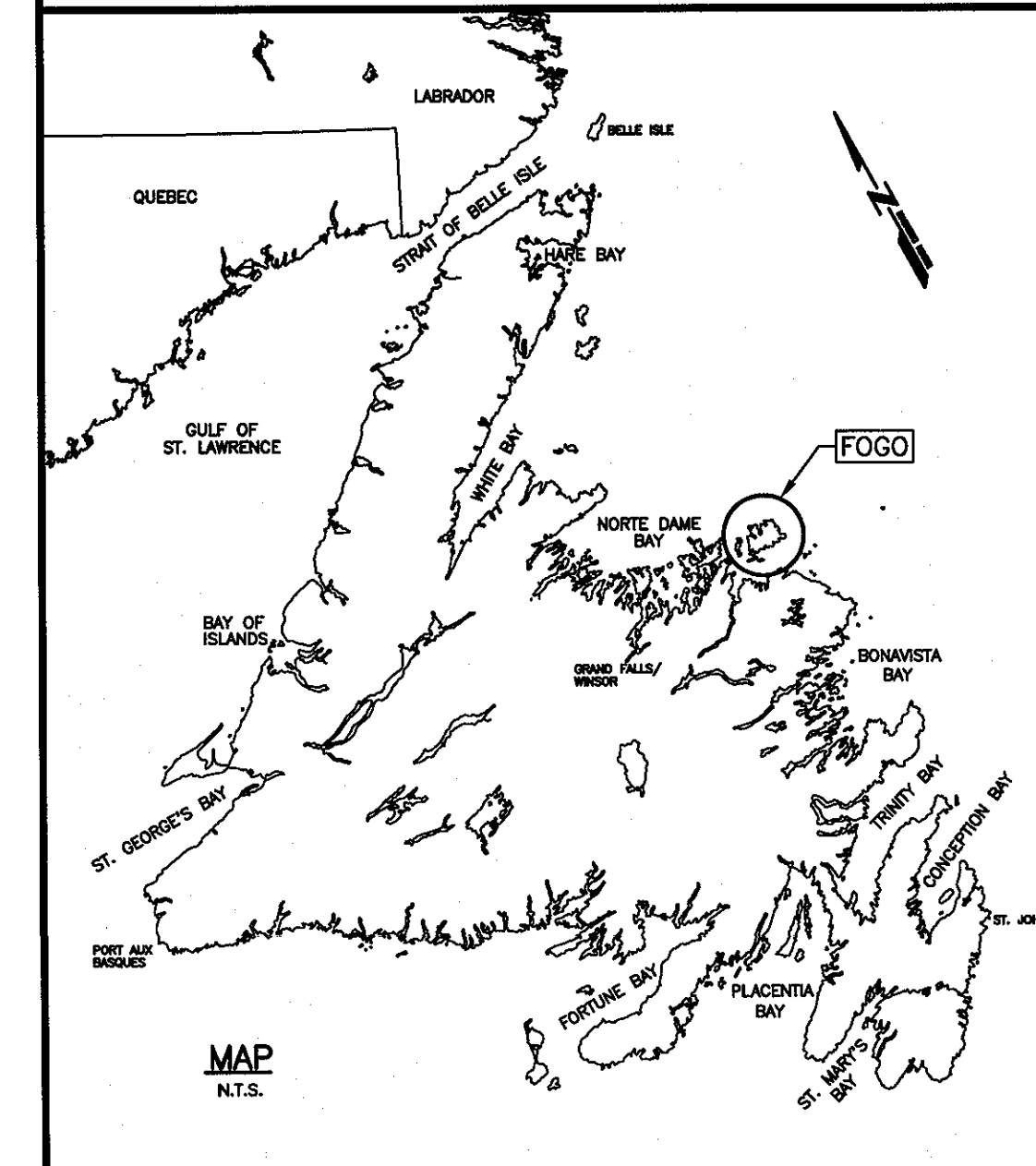


FISHERIES AND OCEANS
CANADA

UPLAND IMPROVEMENTS
FOGO
NEWFOUNDLAND AND LABRADOR

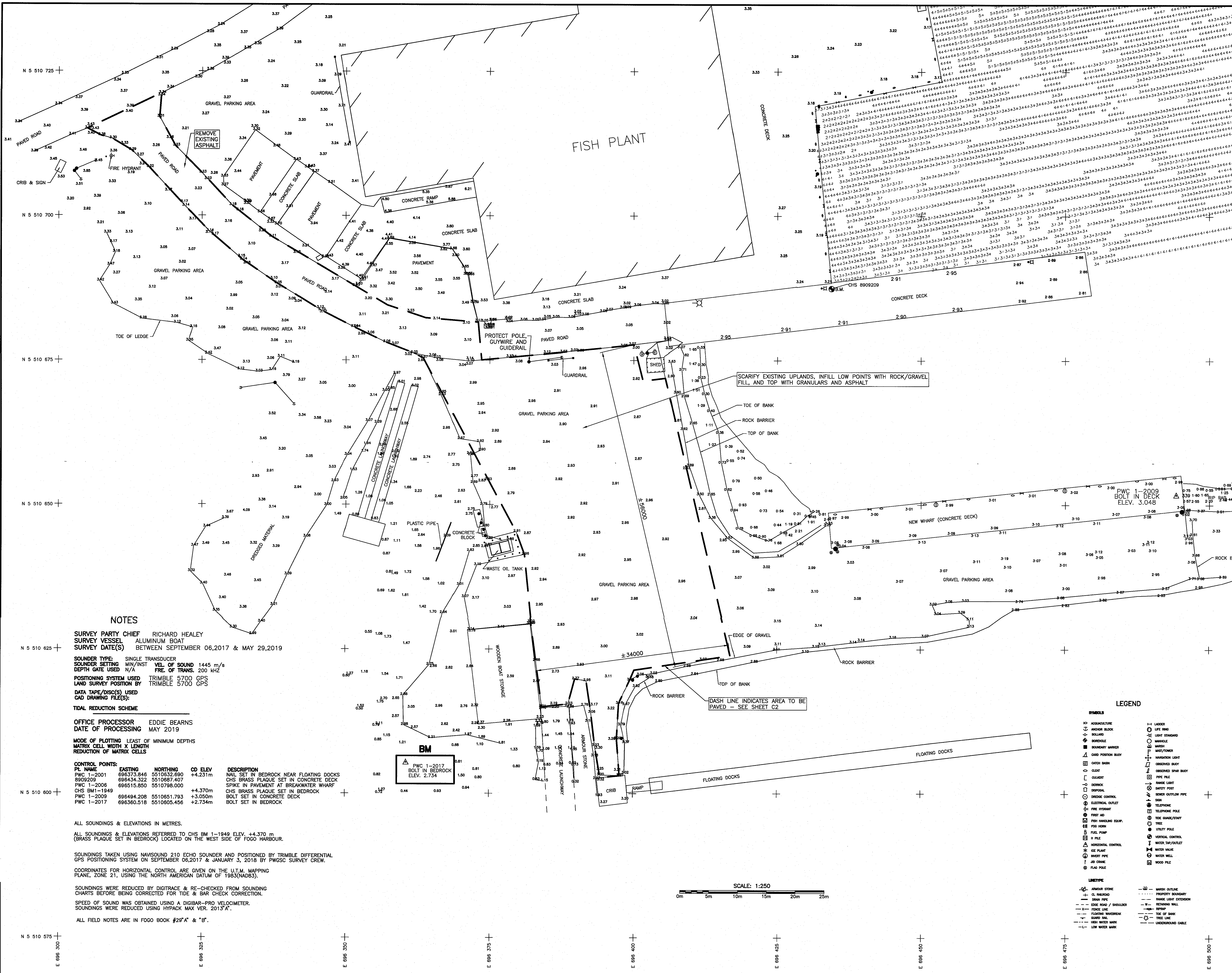
PROJECT No. 723028
ISSUED FOR TENDER

SMALL CRAFT HARBOURS



LIST OF DRAWINGS:

C1 OF 3	SOUNDING AND TOPOGRAPHIC SURVEY
C2 OF 3	NEW SITE PLAN
C3 OF 3	SECTIONS



NOTES

SURVEY PARTY CHIEF RICHARD HEALEY
SURVEY VESSEL ALUMINUM BOAT
SURVEY DATE(S) BETWEEN SEPTEMBER 06,2017 & MAY 29,2019

SOUNDER TYPE SINGLE TRANSDUCER
SOUNDER SETTING MIN/INST VEL OF SOUND 1445 m/s
DEPTH GATE USED N/A FREQ. OF TRANS. 200 KHZ

POSITIONING SYSTEM USED TRIMBLE 5700 GPS
LAND SURVEY POSITION BY TRIMBLE 5700 GPS

DATA TAPE/DISC(S) USED
CAD DRAWING FILE(S)

TIDAL REDUCTION SCHEME

OFFICE PROCESSOR EDDIE BEARNS
DATE OF PROCESSING MAY 2019

MODE OF PLOTTING LEAST OF MINIMUM DEPTHS
MATRIX CELL WIDTH X LENGTH
REDUCTION OF MATRIX CELLS

CONTROL POINTS:	PL. NAME	EASTING	NORTHING	CD ELEV	DESCRIPTION
PWC 1-2001	696373.846	5510632.890	+4.231m		NAIL SET IN BEDROCK NEAR FLOATING DOCKS
890209	696344.222	5510897.407			CHS BRASS PLAQUE SET IN CONCRETE DECK
PWC 1-2006	696515.850	5510798.000			SPIKE IN PAVEMENT AT BREAKWATER WHARF
CHS BM1-1949			+4.370m		CHS BRASS PLAQUE SET IN BEDROCK
PWC 1-2009	696494.208	5510651.793	+3.050m		BOLT SET IN CONCRETE DECK
PWC 1-2017	696360.518	5510605.456	+2.734m		BOLT SET IN BEDROCK

ALL SOUNDINGS & ELEVATIONS IN METRES.
 ALL SOUNDINGS & ELEVATIONS REFERRED TO CHS BM 1-1949 ELEV. +4.370 m
 (BRASS PLAQUE SET IN BEDROCK) LOCATED ON THE WEST SIDE OF FOGO HARBOUR.

SOUNDINGS TAKEN USING NAVISOUND 210 ECHO SOUNDER AND POSITIONED BY TRIMBLE DIFFERENTIAL GPS POSITIONING SYSTEM ON SEPTEMBER 06,2017 & JANUARY 3, 2018 BY PWGSC SURVEY CREW.

COORDINATES FOR HORIZONTAL CONTROL ARE GIVEN ON THE U.T.M. MAPPING PLANE, ZONE 21, USING THE NORTH AMERICAN DATUM OF 1983(NAD83).

SOUNDINGS WERE REDUCED BY DIGITRACE & RE-CHECKED FROM SOUNDING CHARTS BEFORE BEING CORRECTED FOR TIDE & BAR CHECK CORRECTION.

SPEED OF SOUND WAS OBTAINED USING A DIGIBAR-PRO VELOCIMETER.

SOUNDINGS WERE REDUCED USING HYPACK MAX VER. 2013.A.

ALL FIELD NOTES ARE IN FOGO BOOK #29 "A" & "B".

Fisheries and Oceans **Package of Oceans**
Canada

SMALL CRAFT HARBOURS

NOTES:

- ALL ELEVATIONS ARE IN METRES UNLESS OTHERWISE NOTED.
- ALL DIMENSIONS ARE IN MILLIMETRES UNLESS OTHERWISE NOTED.

PROVINCE OF NEWFOUNDLAND
PERMIT HOLDER
 This Permit Allows
APN ENGINEERING INC.

To practice Professional Engineering in Newfoundland and Labrador, P.E. No. 100
 Permit No. as issued by APENL, F0892, which is valid for the year 2019.

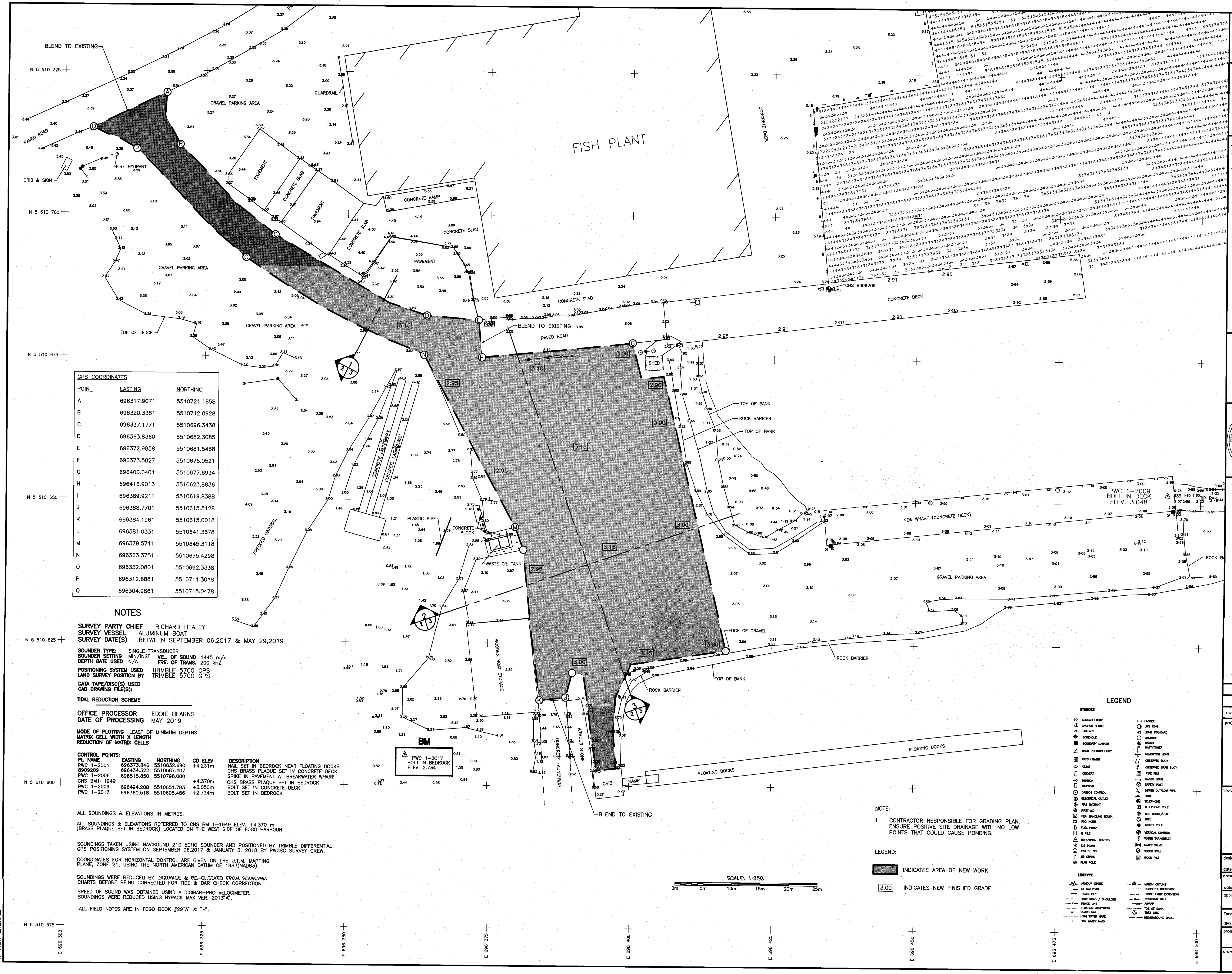
STAMP

A	ISSUED FOR TENDER	6/14/19
B	ISSUED FOR REVIEW	6/11/19
revisions		date

UPLANDS IMPROVEMENTS
FOGO, NL

SOUNDING AND TOPOGRAPHIC SURVEY

designed N.H.	concu
date JUNE 14, 2019	
drawn P.H.	deslin
date JUNE 14, 2019	
approved	approve
Tender <i>Paul Curran</i>	Submission
DFO Project Manager	
project number	no. du projet
723028	
drawing no.	no. du dessin
C1	



GPS COORDINATES

POINT	EASTING	NORTHING
A	696317.9071	5510721.1858
B	696320.3381	5510712.0928
C	696337.1771	5510696.3438
D	696363.8360	5510682.3085
E	696372.9858	5510681.5488
F	696373.5827	5510675.0521
G	696400.0401	5510677.6934
H	696416.9013	5510623.8836
I	696389.9211	5510619.8388
J	696388.7701	5510615.5128
K	696384.1961	5510615.0018
L	696381.0331	5510641.3678
M	696379.5711	5510645.3118
N	696363.3751	5510675.4298
O	696332.0801	5510692.3338
P	696312.6881	5510711.3018
Q	696304.9861	5510715.0478

NOTES

SURVEY PARTY CHIEF RICHARD HEALEY
SURVEY VESSEL ALUMINUM BOAT
SURVEY DATE(S) BETWEEN SEPTEMBER 06, 2017 & MAY 29, 2019

SOUNDER TYPE: SINGLE TRANSDUCER
SOUNDER SETTING: MIN./INST VEL. OF SOUND 1445 m/s
DEPTH GATE USED: N/A
POSITIONING SYSTEM USED: TRIMBLE 5700 GPS
LAND SURVEY POSITION BY: TRIMBLE 5700 GPS
DATA TAPE/DISC(S) USED:
CAD DRAWING FILE(S):

TIDAL REDUCTION SCHEME

OFFICE PROCESSOR EDDIE BEARNS
DATE OF PROCESSING MAY 2019

MODE OF PLOTTING LEAST OF MINIMUM DEPTHS
MATRIX CELL WIDTH X LENGTH:
REDUCTION OF MATRIX CELLS:

CONTROL POINTS:

PT. NAME	EASTING	NORTHING	CD ELEV	DESCRIPTION
PWC 1-2001	696373.846	5510632.690	+4.231m	NAIL SET IN BEDROCK NEAR FLOATING DOCKS
PWC 1-2002	696434.322	5510687.407		CHS BRASS PLAQUE SET IN CONCRETE DECK
PWC 1-2006	696515.850	5510798.000		SPIKE IN PAVEMENT AT BREAKWATER WHARF
PWC 1-1949			+4.370m	CHS BRASS PLAQUE SET IN BEDROCK
PWC 1-2009	696494.208	5510651.793	+3.050m	BOLT SET IN CONCRETE DECK
PWC 1-2017	696360.518	5510685.456	+2.734m	BOLT SET IN BEDROCK

ALL SOUNDINGS & ELEVATIONS IN METRES.
ALL SOUNDINGS & ELEVATIONS REFERRED TO CHS BM 1-1949 ELEV. +4.370 m (BRASS PLAQUE SET IN BEDROCK) LOCATED ON THE WEST SIDE OF FOGO HARBOUR.

SOUNDINGS TAKEN USING NAVSOUND 210 ECHO SOUNDER AND POSITIONED BY TRIMBLE DIFFERENTIAL GPS POSITIONING SYSTEM ON SEPTEMBER 06, 2017 & JANUARY 3, 2018 BY PWGSC SURVEY CREW.

COORDINATES FOR HORIZONTAL CONTROL ARE GIVEN ON THE U.T.M. MAPPING PLANE, ZONE 21, USING THE NORTH AMERICAN DATUM OF 1983 (NAD83).

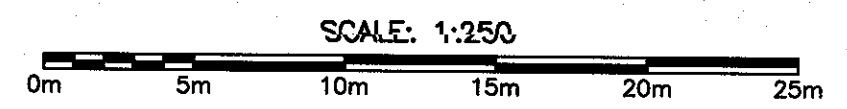
SOUNDINGS WERE REDUCED BY DIGITRACE & PE-CHECKED FROM SOUNDING CHARTS BEFORE BEING CORRECTED FOR TIDE & BAR CHECK CORRECTION.

SPEED OF SOUND WAS OBTAINED USING A DIGIBAR-PRO VELOCIMETER. SOUNDINGS WERE REDUCED USING HYPACK MAX VER. 2013 A.

ALL FIELD NOTES ARE IN FOGO BOOK #29 A" & "B."

NOTE:
 1. CONTRACTOR RESPONSIBLE FOR GRADING PLAN. ENSURE POSITIVE SITE DRAINAGE WITH NO LOW POINTS THAT COULD CAUSE PONDING.

LEGEND:
 [Symbol] INDICATES AREA OF NEW WORK
 [Symbol] INDICATES NEW FINISHED GRADE



Maritime and Coastal Package of Coastal

SMALL CRAFT HARBOURS

NOTES:
 1. ALL ELEVATIONS ARE IN METRES UNLESS OTHERWISE NOTED.
 2. ALL DIMENSIONS ARE IN MILLIMETRES UNLESS OTHERWISE NOTED.

PROVINCE OF NEWFOUNDLAND PERMIT HOLDER This Permit Allows APN ENGINEERING INC.

APN ENGINEERING INC.
 To practice Professional Engineering in Newfoundland and Labrador, Permit No. as issued by APREGU, P0282, which is valid for the year 2019.

REGISTERED PROFESSIONAL ENGINEER
 NEIL C. HUNT
 REGISTRATION NO. 1203
 EXPIRES 6/14/19

NO.	ISSUED FOR TENDER	DATE
B	ISSUED FOR TENDER	6/14/19
A	ISSUED FOR REVIEW	6/11/19

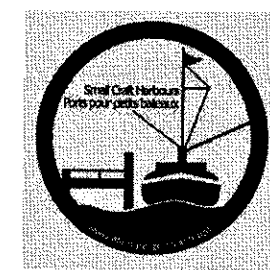
UPLANDS IMPROVEMENTS FOGO, NL

NEW SITE PLAN

designed N.H. concu
 date JUNE 14, 2019
 drawn P.H. dessine
 date JUNE 14, 2019
 approved approve

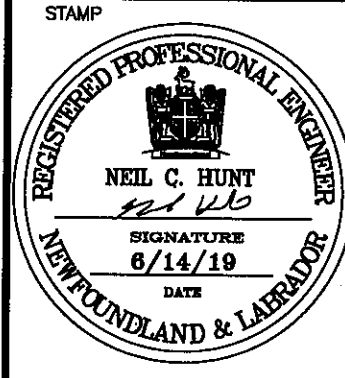
Tender Paul Curran Submission
 DFO Project Manager
 project number no. du projet
723028
 drawing no. no. du dessin
C2

SMALL CRAFT HARBOURS



NOTES:
1. ALL ELEVATIONS ARE IN METRES UNLESS OTHERWISE NOTED.
2. ALL DIMENSIONS ARE IN MILLIMETRES UNLESS OTHERWISE NOTED.

PROVINCE OF NEWFOUNDLAND
PERMIT HOLDER
This Permit Allows
APN ENGINEERING INC.
To practice Professional Engineering in Newfoundland and Labrador. Permit No. as issued by APREGO, F0582 which is valid for the year 2019.



B	ISSUED FOR TENDER	6/14/19
A	ISSUED FOR REVIEW	6/11/19
revisions		date
project		project

UPLANDS IMPROVEMENTS
FOGO, NL

drawing design

SECTIONS

designed N.H. concu
date JUNE 14, 2019
drawn P.H. desina
date JUNE 14, 2019
approved approve

Tender	Paul Hunt	Submission
DFO Project Manager		
project number	723028	no. du projet
drawing no.	C3	no. du dessin

