

**ANNEX A Site  
Photographs**

R.087575.004 Reay Creek Remediation – Victoria Airport Lands  
1640 Electra Boulevard, Sidney, BC  
SLR Project No.: 205.03892.00004



**Photo 1:** Existing soil stockpiles in contaminated soil stockpile area, looking west. BC Aviation Museum shown in background right. Stockpiles to be removed under contract.



**Photo 2:** Shack and overhead power lines at south end of work area, looking south. Protect from disturbance.



Reay Creek Remediation Specifications  
Reay Creek, Victoria International Airport  
Sidney, BC

SITE PHOTOGRAPHS

Project No: 205.03892.00004



**Photo 3:** Paved road bisecting Reach 1C, looking north. Maintain roadway during and after construction.



**Photo 4:** Remove and dispose debris if encountered.



Reay Creek Remediation Specifications  
Reay Creek, Victoria International Airport  
Sidney, BC

SITE PHOTOGRAPHS

Project No: 205.03892.00004



**Photo 5:** View of Norseman Road crossing Reay Creek, looking west. Reach 3 tributary channel with riparian vegetation visible along left of roadway.



**Photo 6:** Potential alternate stockpile or laydown area south of Reach 3 area, looking northwest.



Reay Creek Remediation Specifications  
Reay Creek, Victoria International Airport  
Sidney, BC

SITE PHOTOGRAPHS

Project No: 205.03892.00004



**Photo 7:** Access to potential alternate stockpile or laydown area, looking west. Cycling / Pedestrian path visible between Canora Road (foreground) and field. Access gate visible in background.



**Photo 8:** Access over road-side ditch to potential alternate stockpile or laydown area, looking southwest. Crossing to be maintained and protected.



Reay Creek Remediation Specifications  
Reay Creek, Victoria International Airport  
Sidney, BC

SITE PHOTOGRAPHS

Project No: 205.03892.00004



**Photo 9:** Alternate road-side ditch crossing to potential alternate stockpile or laydown area, looking south. Cycling / Pedestrian path visible in right of photograph. Crossing to be maintained and protected.



**Photo 10:** Access gate to potential alternate stockpile or laydown area, looking west. Cycling / Pedestrian path visible in foreground.



SITE PHOTOGRAPHS

Reay Creek Remediation Specifications  
Reay Creek, Victoria International Airport  
Sidney, BC


Project No: 205.03892.00004



**Photo 11:** View of north side of Reach 1A and Reach 1C, looking west. Reay Creek channel with riparian vegetation visible on left of photograph



**Photo 12:** Monitoring wells adjacent to Reach 1A and Reach 1C to be protected.

	Reay Creek Remediation Specifications Reay Creek, Victoria International Airport Sidney, BC
SITE PHOTOGRAPHS	Project No: 205.03892.00004



**Photo 13:** Invasive plant material along north bank of Reach 1A to be removed, looking west. Monitoring well to be protected.



**Photo 14:** Stormwater outlet headwall adjacent to Reach 1A to be protected, looking northwest. Monitoring well in background to be protected.



SITE PHOTOGRAPHS

Reay Creek Remediation Specifications  
Reay Creek, Victoria International Airport  
Sidney, BC

Project No: 205.03892.00004





**Photo 15:** Storm lines adjacent to Reach 1C and Reach 1A to be protected, looking south.



**Photo 16:** Utility infrastructure along north side of Reach 1A at upstream end, looking west.



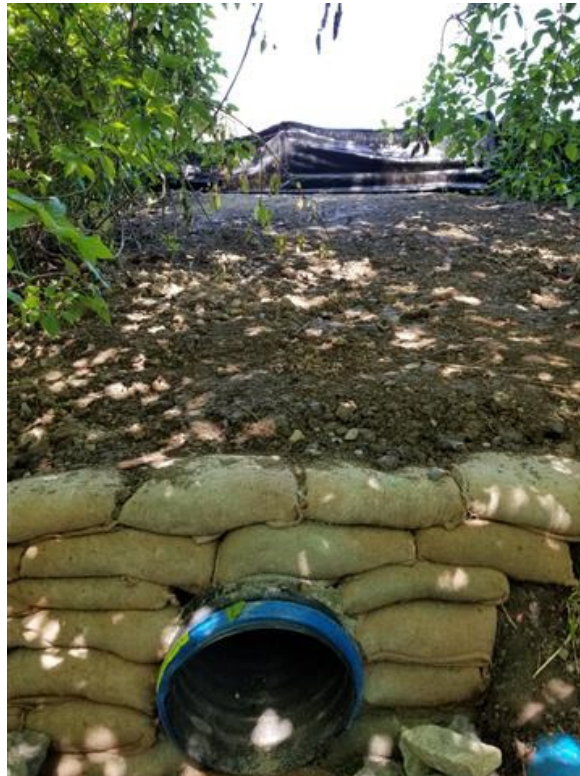
Reay Creek Remediation Specifications  
Reay Creek, Victoria International Airport  
Sidney, BC

SITE PHOTOGRAPHS

Project No: 205.03892.00004



**Photo 17:** Pumphouse along north side of Reach 1A at upstream end, looking northwest.



**Photo 18:** Newly installed storm outlet pipe from pumphouse to upstream end of Reach 1A and old abandoned PVC storm pipe to be protected, looking north.



SITE PHOTOGRAPHS

Reay Creek Remediation Specifications  
Reay Creek, Victoria International Airport  
Sidney, BC

Project No: 205.03892.00004



**Photo 19:** Newly installed storm outlet pipe from pumphouse to upstream end of Reach 1A and old abandoned PVC storm pipe to be protected, looking north.



**Photo 20:** Culvert outlet on north side of berm near Reach 1B, looking east. Protect from disturbance.



Reay Creek Remediation Specifications  
Reay Creek, Victoria International Airport  
Sidney, BC

SITE PHOTOGRAPHS

Project No: 205.03892.00004



**Photo 21:** Stacked rock wall adjacent to Garry oak tree along Reach 1B, looking southeast. No machine access. Rock wall to be protected.



**Photo 22:** Stacked rock wall adjacent to Garry oak tree along Reach 1B, looking northwest. No machine access. Rock wall to be protected.



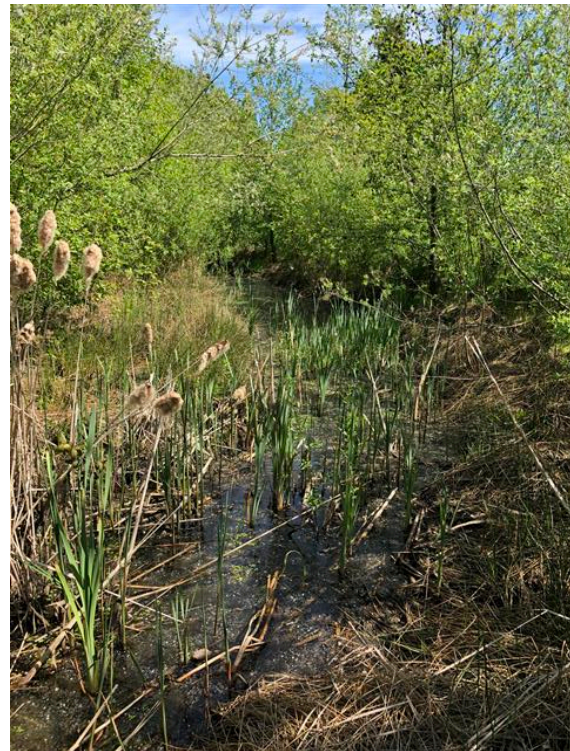
Reay Creek Remediation Specifications  
Reay Creek, Victoria International Airport  
Sidney, BC

SITE PHOTOGRAPHS

Project No: 205.03892.00004



**Photo 23:** Potential access area around Garry oak tree along Reach 1B, looking east. Do not disturb existing berm to right.



**Photo 24:** Reach 1B typical channel condition, looking east.



SITE PHOTOGRAPHS

Reay Creek Remediation Specifications  
Reay Creek, Victoria International Airport  
Sidney, BC

Project No: 205.03892.00004



**Photo 25:** Reach 1B typical channel condition, looking west.



**Photo 26:** Invasive plant material along channel edge in Reach 1C, looking northwest.



SITE PHOTOGRAPHS

Reay Creek Remediation Specifications  
Reay Creek, Victoria International Airport  
Sidney, BC


Project No: 205.03892.00004



**Photo 27:** Monitoring well adjacent to berm near Reach 1C, looking east. Protect from disturbance.



**Photo 28:** Oak tree adjacent to roadway bisecting Reach 1C, looking north. Retain significant trees on-site to fullest extent possible.


	Reay Creek Remediation Specifications Reay Creek, Victoria International Airport Sidney, BC
SITE PHOTOGRAPHS	Project No: 205.03892.00004



**Photo 29:** Potential access to Reach 1B, looking northwest. Relocation of end of berm on left may be required for significant tree protection.



**Photo 30:** Downstream end of Reach 1C, looking northeast. Airside fence line and overhead power lines visible.

	Reay Creek Remediation Specifications Reay Creek, Victoria International Airport Sidney, BC
SITE PHOTOGRAPHS	Project No: 205.03892.00004






**Photo 31:** View of Reach 1C channel, looking south.



**Photo 32:** Reach 3 tributary channel typical condition, looking west.

	Reay Creek Remediation Specifications Reay Creek, Victoria International Airport Sidney, BC
SITE PHOTOGRAPHS	Project No: 205.03892.00004



**Photo 33:** Tree adjacent to Reach 3 channel, looking east. Certified arborist to determine tree removal requirements for trees adjacent to creek.



**Photo 34:** Root mass spanning bottom of Reach 3 channel, looking south. Maintain creek morphology to extent practicable. Use hand removal methods adjacent to tree roots.



Reay Creek Remediation Specifications  
Reay Creek, Victoria International Airport  
Sidney, BC

SITE PHOTOGRAPHS

Project No: 205.03892.00004



**Photo 35:** Eroded bank along south side of Reach 3 tributary channel, looking southwest.



**Photo 36:** Water quality sampling infrastructure and power pole at upstream end of Reach 4, looking southwest. Sampling infrastructure within creek to be removed prior to project. Adjacent infrastructure to remain and be protected.



Reay Creek Remediation Specifications  
 Reay Creek, Victoria International Airport  
 Sidney, BC

SITE PHOTOGRAPHS

Project No: 205.03892.00004



**Photo 37:** Upstream section of Reach 4, looking northwest. Water sampling infrastructure visible in background. To be removed prior to project.



**Photo 38:** Natural drop structure within Reach 4 channel, looking northwest. Existing stream morphology to be retained to extent possible.



Reay Creek Remediation Specifications  
Reay Creek, Victoria International Airport  
Sidney, BC

SITE PHOTOGRAPHS

Project No: 205.03892.00004



**Photo 39:** Reach 4 channel typical condition, looking northwest.



**Photo 40:** Undercut bank along east side of Reach 4 to be maintained for fish habitat, looking northeast.



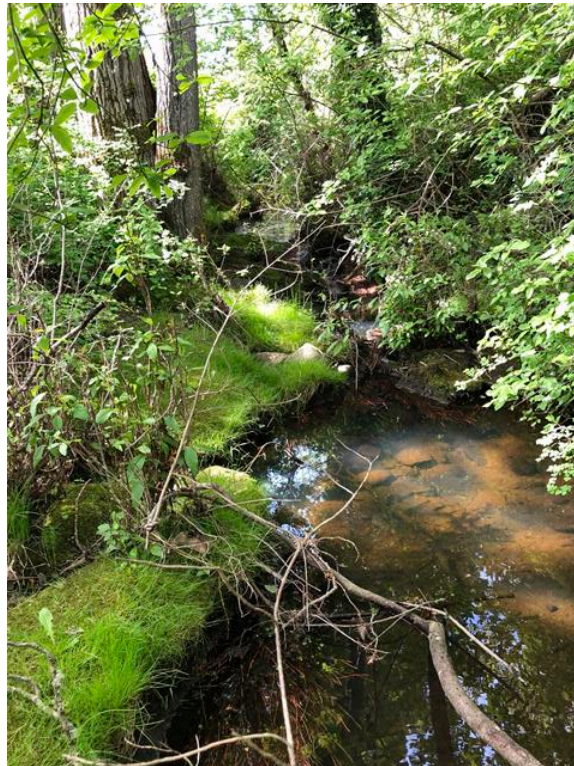
Reay Creek Remediation Specifications  
Reay Creek, Victoria International Airport  
Sidney, BC

SITE PHOTOGRAPHS

Project No: 205.03892.00004



**Photo 41:** Pool area along Reach 4 typical condition, looking northwest.



**Photo 42:** Reach 4 channel typical condition, looking northwest.



Reay Creek Remediation Specifications  
Reay Creek, Victoria International Airport  
Sidney, BC

SITE PHOTOGRAPHS

Project No: 205.03892.00004



**Photo 43:** Old metal-coiled wood stave water pipe at downstream end of Reach 4 near Canora Road culvert, looking south. Pipe has collapsed into Reay Creek.



Reay Creek Remediation Specifications  
Reay Creek, Victoria International Airport  
Sidney, BC

SITE PHOTOGRAPHS

Project No: 205.03892.00004