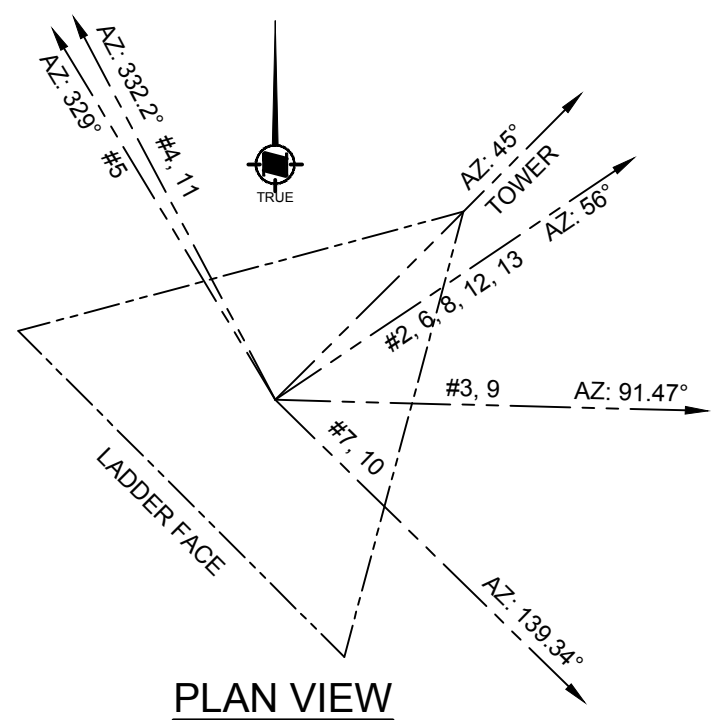


**TOWER ELEVATION**  
SCALE 1:150



**PLAN VIEW**  
SCALE 1:50

**TOWER SPECIFICATIONS**

SITE:	CAPE LAZO
Latitude-NAD83:	49° 42' 21.63" N
Longitude-NAD83:	124° 51' 46.71" W
Site Elevation:	32.5m
Design Standard:	CSA S37-18
Design Wind:	TBD (based on data from Environment Canada)
Design Ice:	TBD (from CSA S37)
Reliability:	Class 1
Serviceability:	1
Tower Twist:	0.05°
Tower Tilt:	0.5°
Tower Type:	Self Support - Triangular in cross section
Tower Height:	24.38m (80'-0")
Tower Section Height:	6.096m (20'-0")
Paint:	7 solid color bands in accordance with Transport Canada Standard 621.
Lights:	Obstruction Light - Dual CL810 c/w Control
Ice Guard:	None
Safety Climb:	None
Anticlimb:	On ladder face
Lighting Protection:	Lightning Rod to provide 45° protection for top antenna
Tx Brackets:	Tx Brackets on either side of ladder rail or tower face - 6 line capacity
Antenna Mounts:	Required for all initial antennas

**ANTENNA SCHEDULE - CAPE LAZO**

ANTENNA (#)	USER	ELEV	ANTENNA TYPE	INITIAL or FUTURE	AZIMUTH	Tx-LINE	ANTENNA MOUNT TYPE
1	CCG	26.4m (86'-8")	RADAR-HIGH GAIN X-BAND SWG ANTENNA	INITIAL	OMNI	EW85	PEDESTAL
2	CCG	24.4m (80'-0")	COMPROD 872F-70 VHF RECEIVE DIPOLE	INITIAL	56°	LDF4-50A	LEG
3	CCG	24.0m (78'-8")	HSX4-107 MICROWAVE ANTENNA (main) - TEXADA	INITIAL	91.47°	EWP90	FACE
4	CCG	24.0m (78'-8")	HX8-6W MICROWAVE ANTENNA (main) - DISCOVERY	INITIAL	332.2°	EWP63 (x2)	FACE
5	CCG	19.8m (65'-0")	SY206-SF2SNM YAGI ANTENNA - ALEN	INITIAL	329°	LDF4-50A	FACE
6	CCG	18.3m (60'-0")	COMPROD 872F-70 VHF TRANSMIT DIPOLE	INITIAL	56°	LDF4-50A	LEG
7	CCG	17.0m (55'-10")	HSX8-59 MICROWAVE ANTENNA (main) - LITTLE MOUNTAIN	INITIAL	139.34°	EWP63 (x2)	FACE
8	CCG	12.2m (40'-0")	COMPROD 872F-70 VHF MULTI DIPOLE	INITIAL	56°	LDF4-50A	LEG
9	CCG	12.0m (39'-5")	HSX4-107 MICROWAVE ANTENNA (diversity) - TEXADA	INITIAL	91.47°	EWP90	FACE
10	CCG	12.0m (39'-5")	HSX6-59A MICROWAVE ANTENNA (diversity) - LITTLE MOUNTAIN	INITIAL	139.34°	EWP63 (x2)	FACE
11	CCG	11.0m (36'-1")	HX6-6W MICROWAVE ANTENNA (diversity) - DISCOVERY	INITIAL	332.2°	EWP63 (x2)	FACE
12	CCG	9.1m (30'-0")	SINCLAIR SD210 VHF SINGLE - TECH'S	INITIAL	56°	LDF4-50A	LEG
13	CCG	6.1m (20'-0")	SINCLAIR SD210 VHF SINGLE - TEST	INITIAL	56°	LDF4-50A	FACE

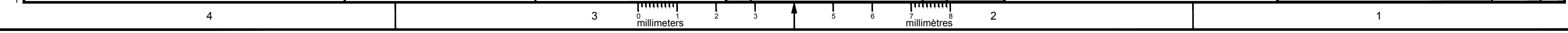
Fisheries and Oceans Canada  
 Pêches et Océans Canada  
 Canadian Coast Guard  
 Garde côtière Canadienne

designed - conception	date	checked - vérifié	date
SMC	2018-04-06	SMC	2018-04-06
drawn - dessiné	date	approved - approuvé	date
TDK	2018-04-06	-	-
CCG ref. no. - no. réf. GCC	scale - échelle	rev	description
8B200	AS SHOWN		

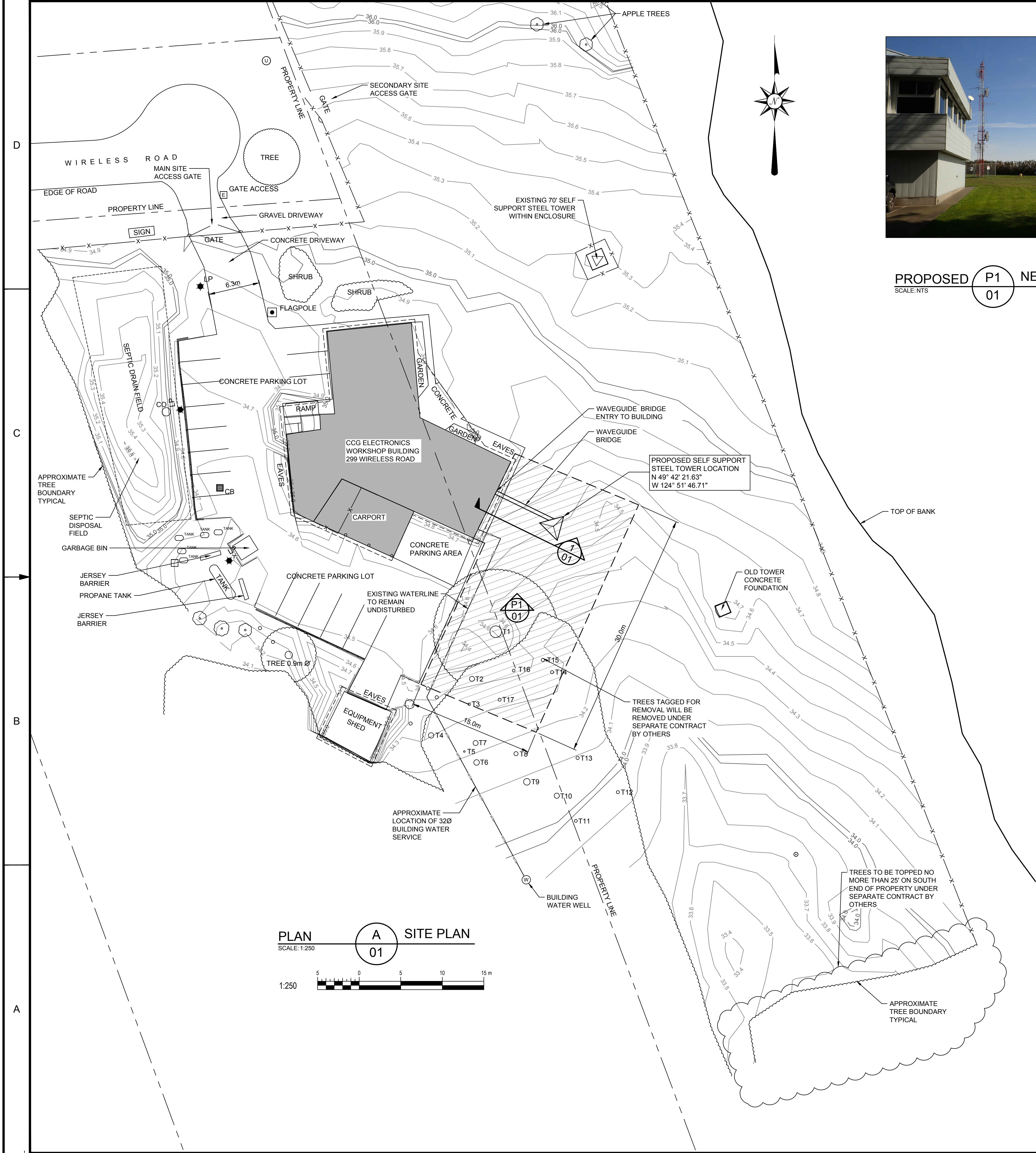
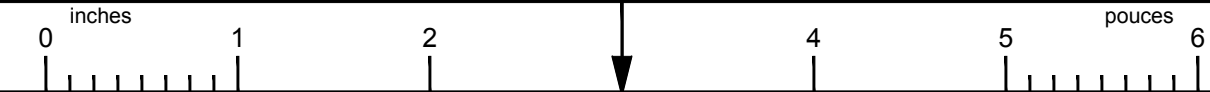
Asset - Actif	CAPE LAZO
	VHF PERIPHERAL RADIO STATION
by par	Date
TDK	2019-06-05

Drawing - Dessin  
 80' TOWER ANTENNA LAYOUT  
 drawing no. - no. dessin  
 WM-110-1009

sheet-feuille	rev
01/01	0



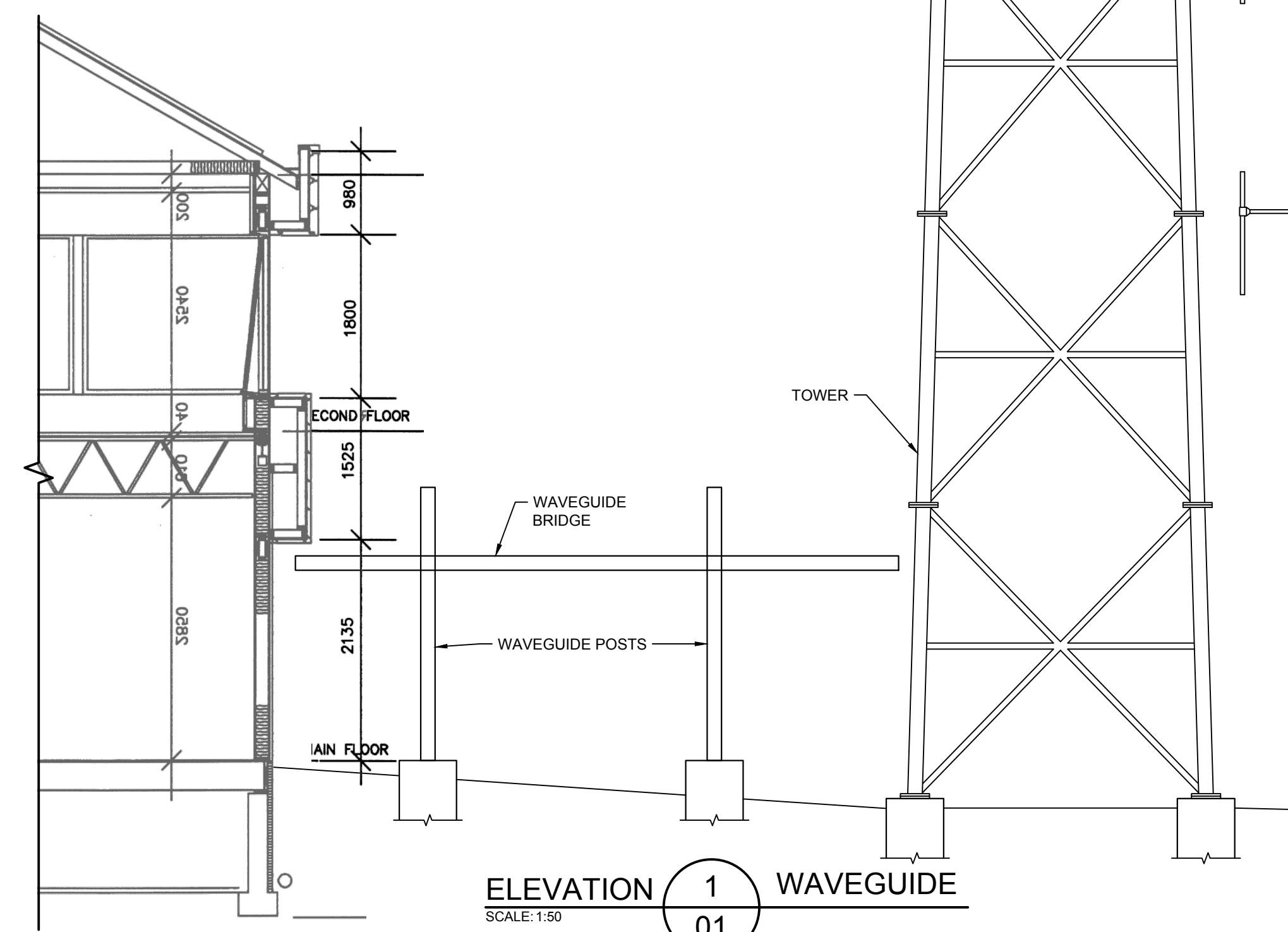
File / Fichier: C:\USERS\KLASSENT\DOCUMENTS\WM-110-1009 CAPE LAZO- ANTENNA TOWER LAYOUT REV 01.DWG - Printed / Imprimé: 2019/06/05 2:58  
 ANSI B



**PROPOSED P1 NEW TOWER LOCATION**  
SCALE: NTS 01



**PLAN B LOCATION PLAN**  
SCALE: 1:50,000



Fisheries and Oceans Canada  
Pêches et Océans Canada

Canadian Coast Guard  
Garde côtière Canadienne

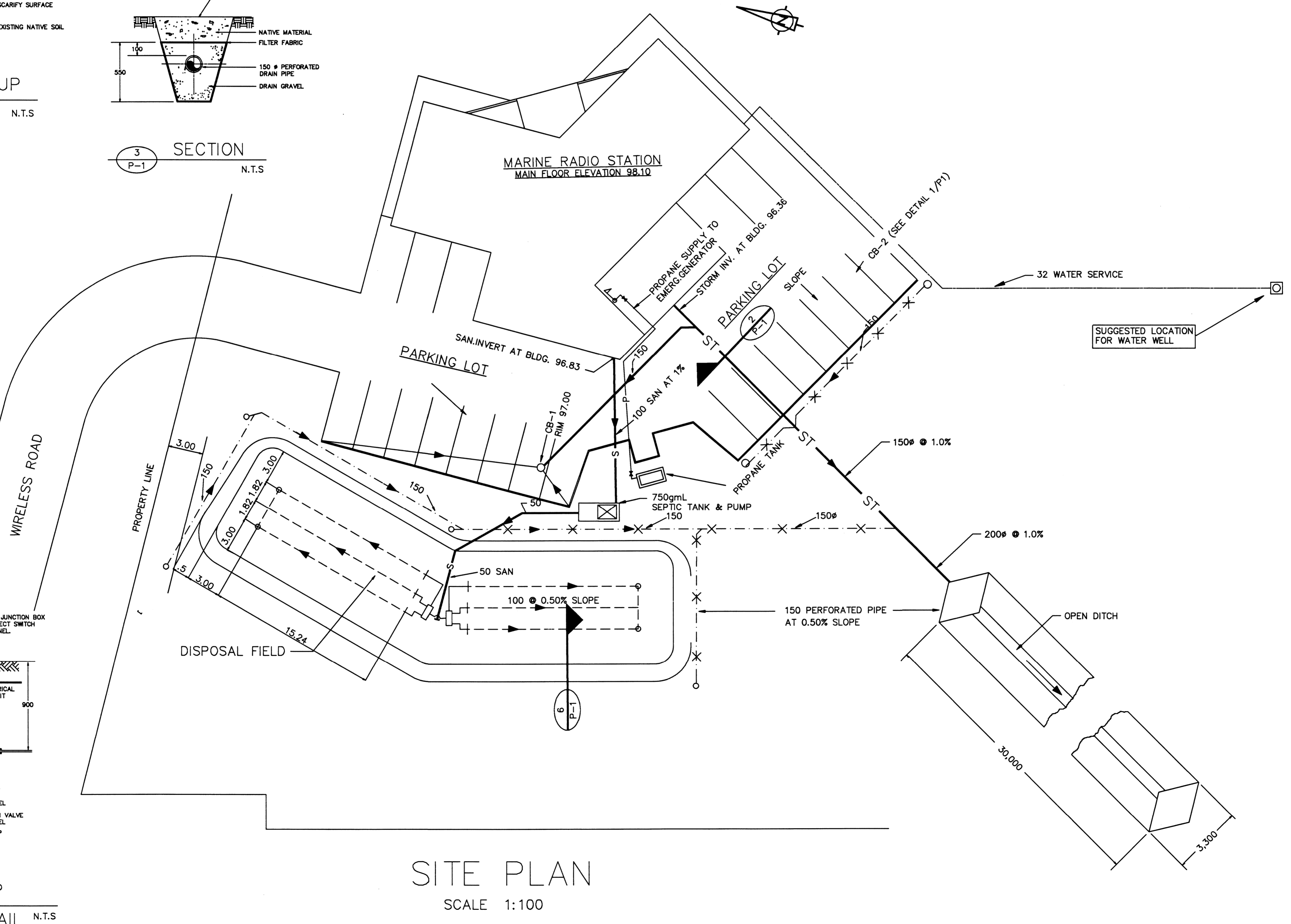
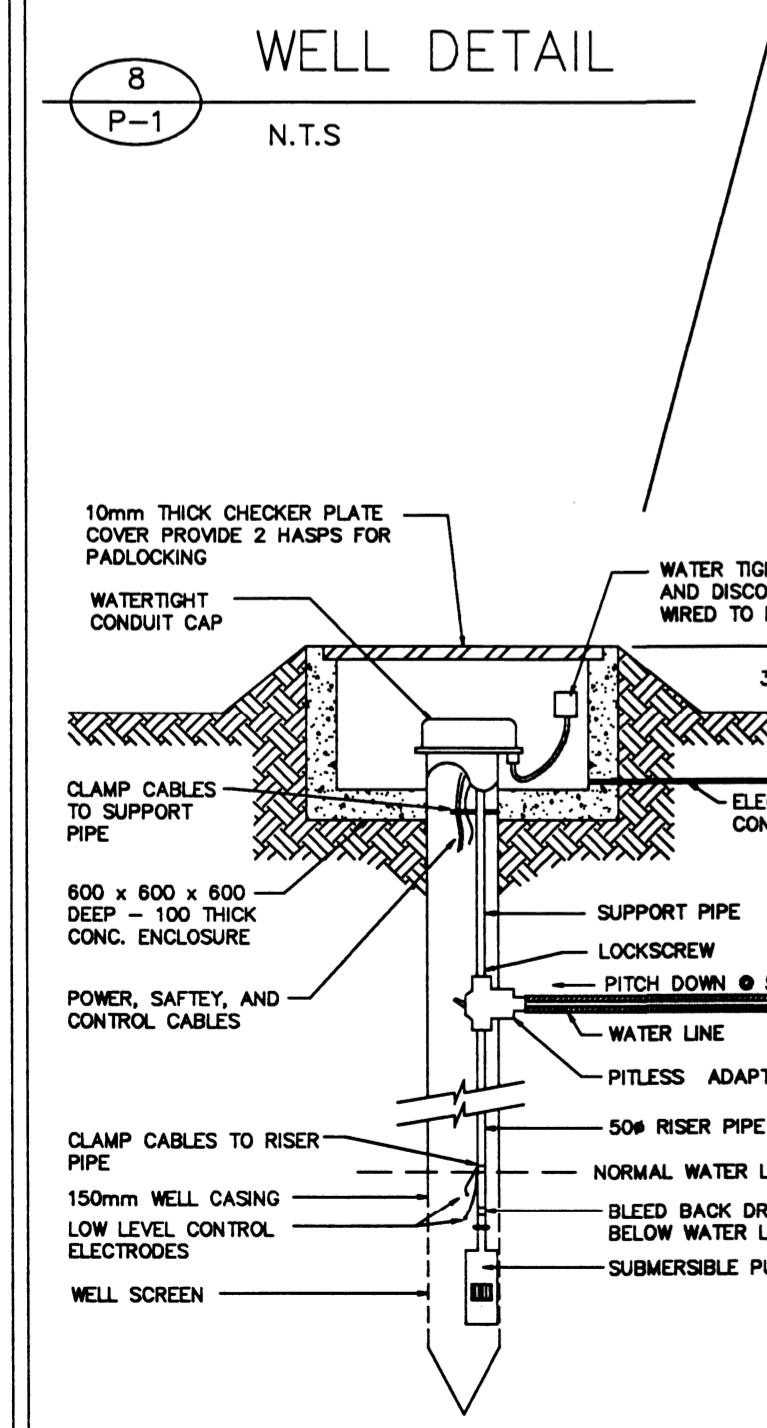
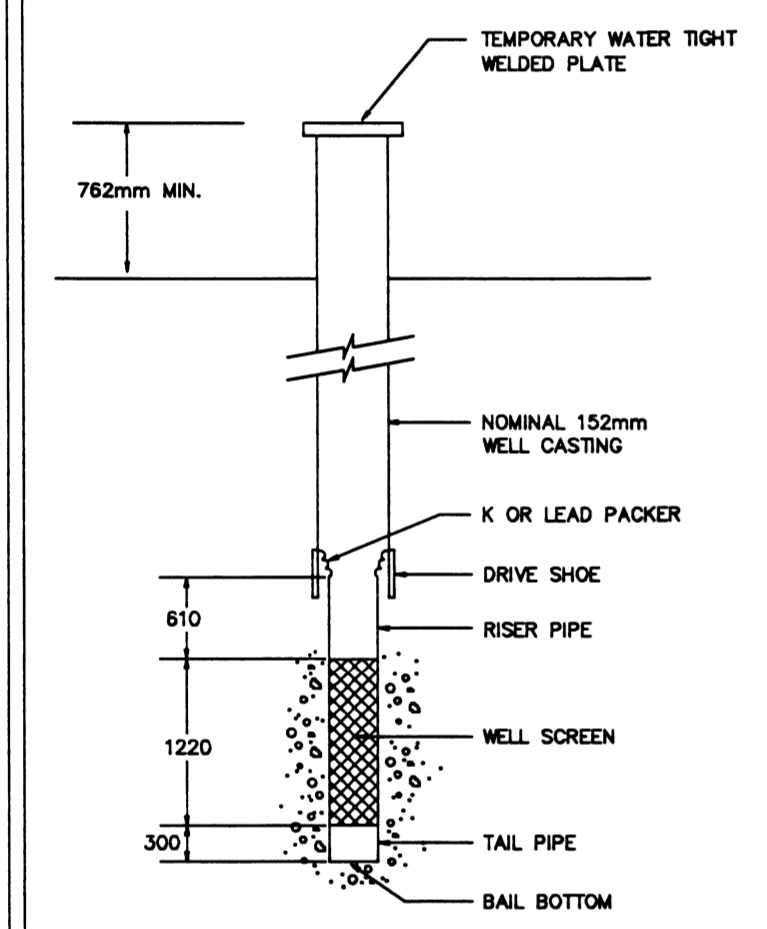
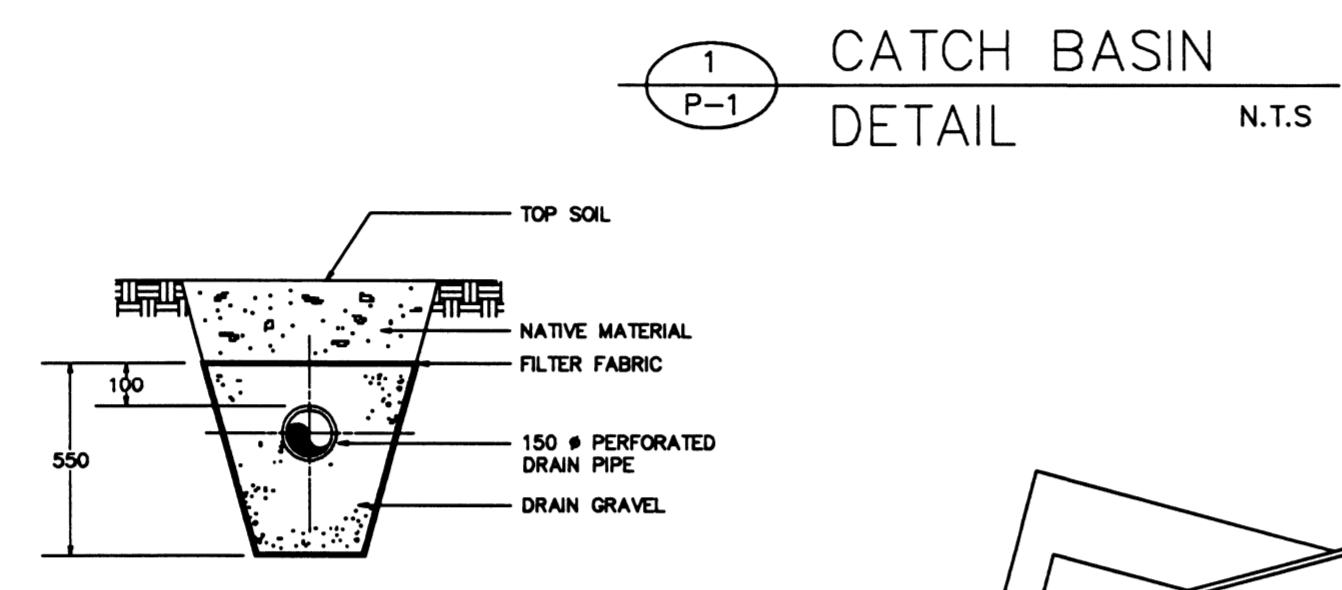
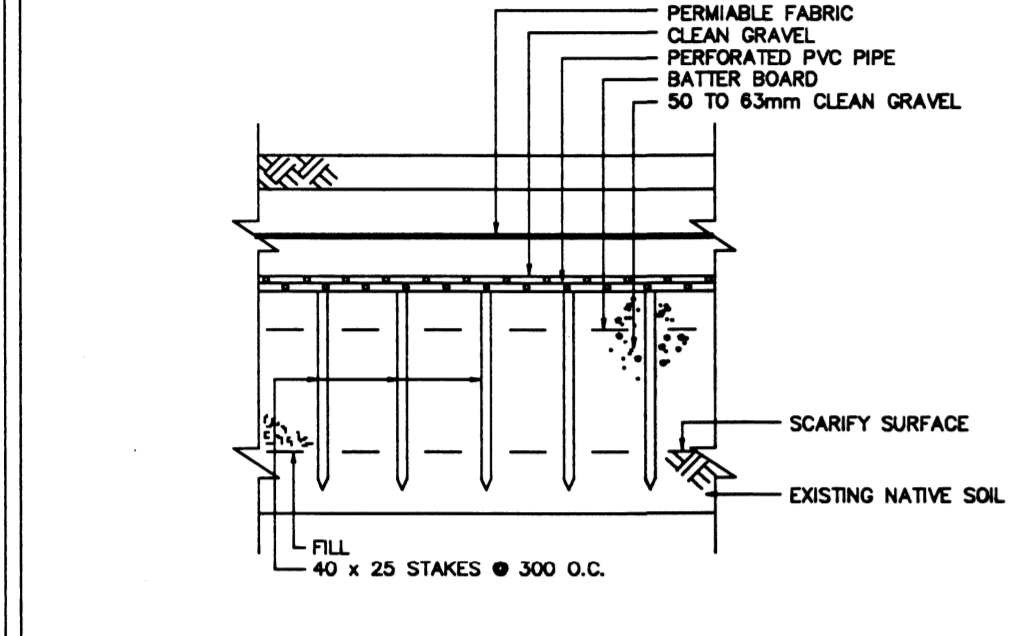
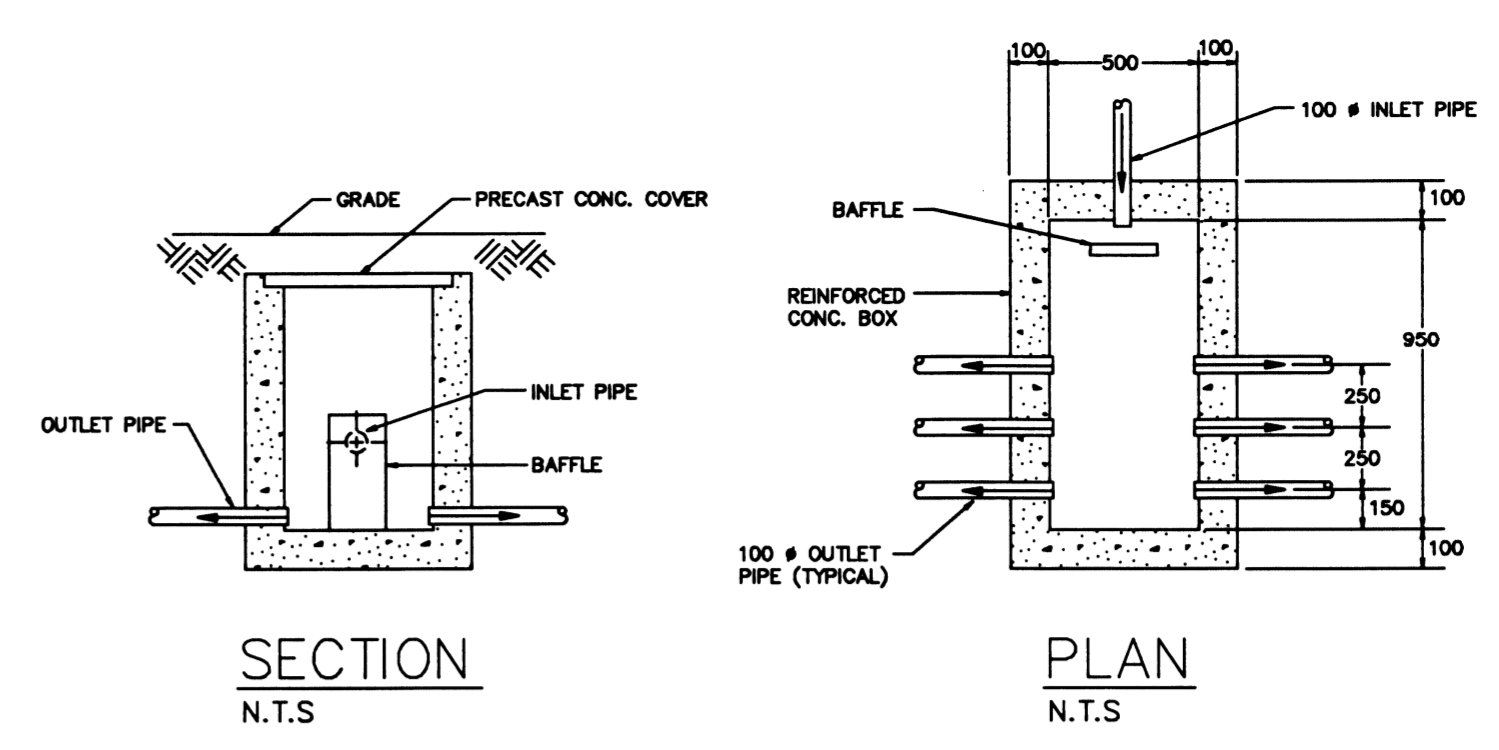
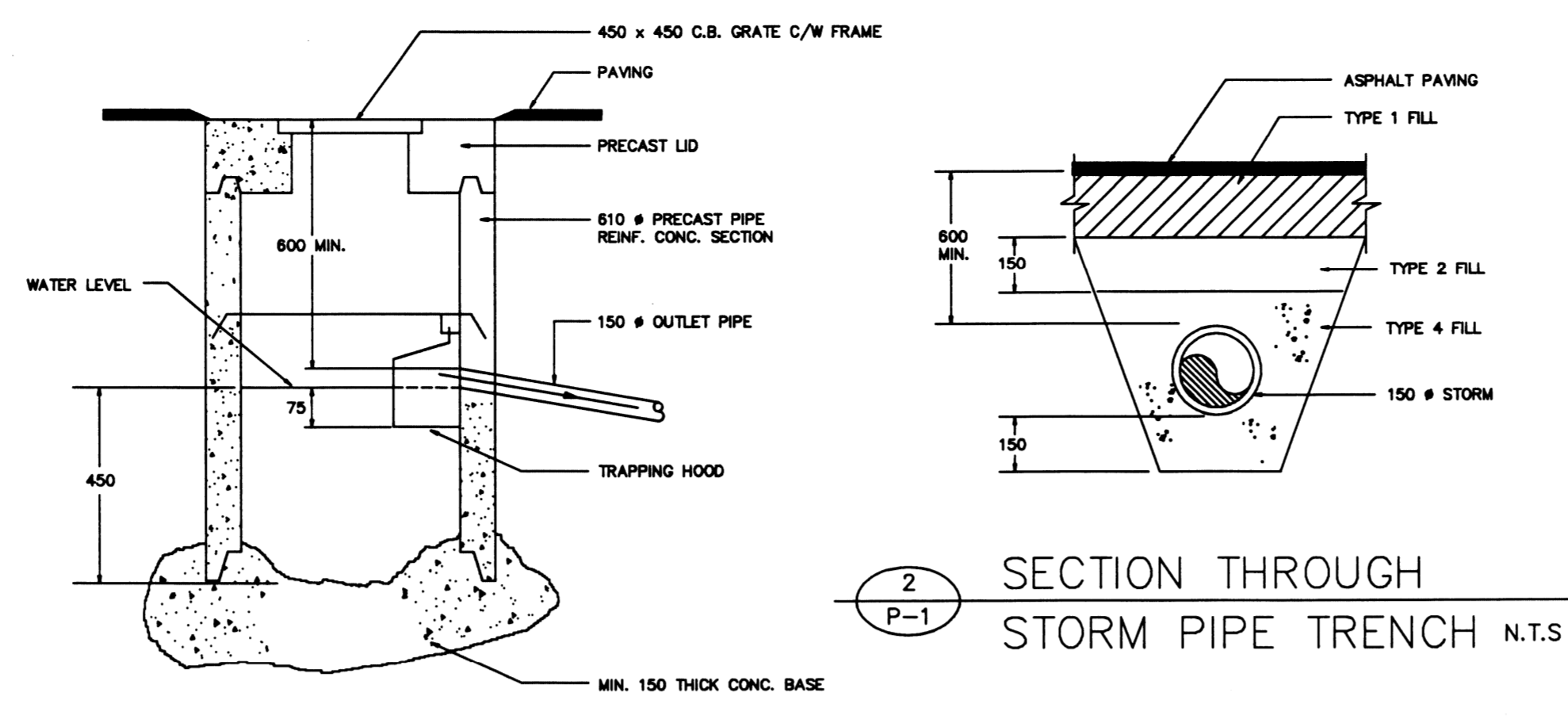
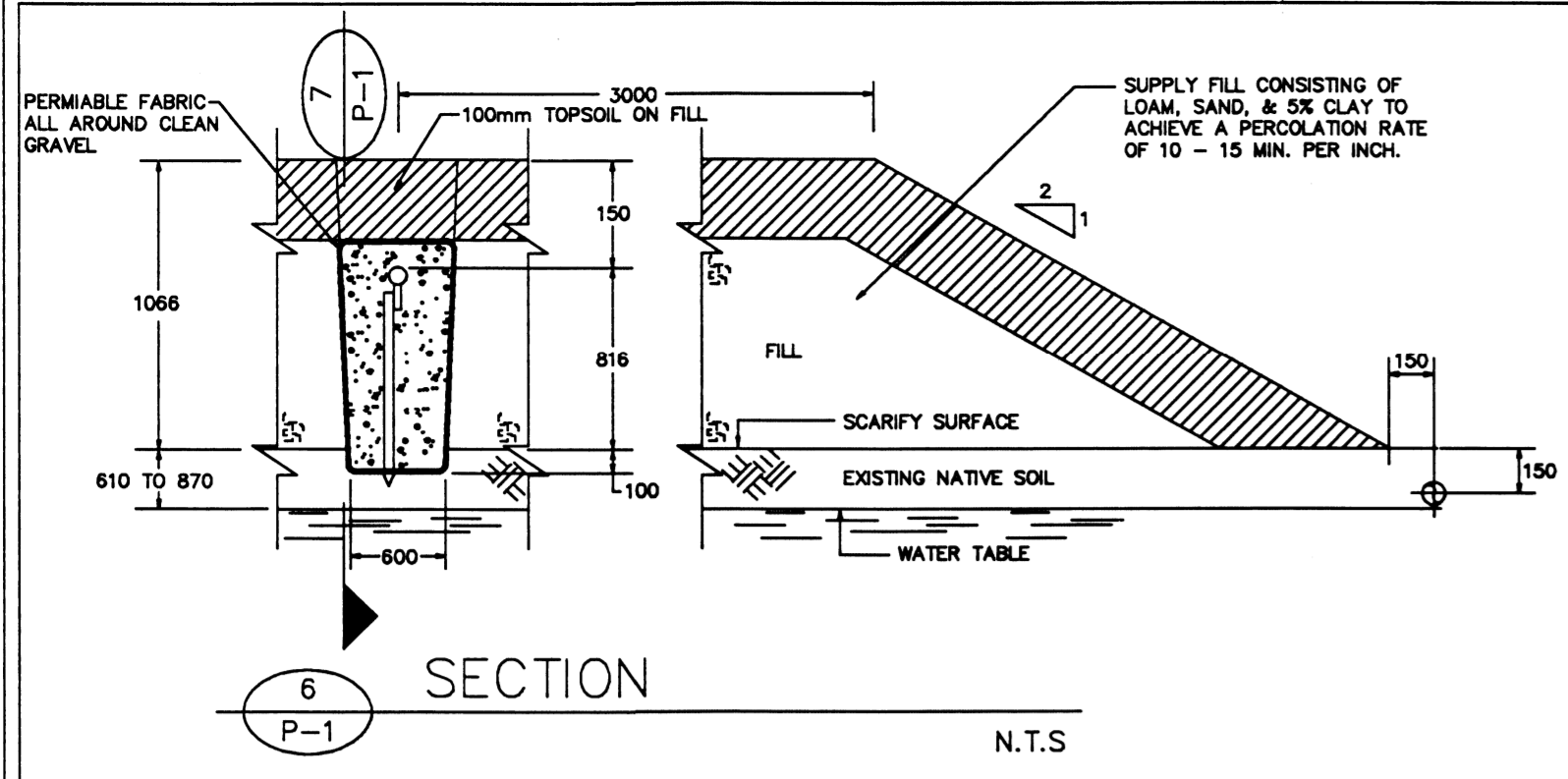
Vendor Information / Sous-traitant

**KEY PLAN**

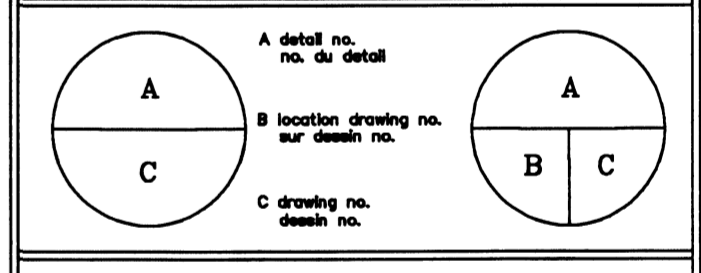
**LEGEND**

- X — X — FENCE LINE
- 34.0 — CONTOUR LINE
- WTR — WTR — WATER LINE (E)
- TREE LINE
- TXX TREE TAGGED FOR REMOVAL
- ▨ CONTRACTOR WORK ZONE

0 ISSUED FOR TENDER	TDK 2019-06-05
rev description	by par date
Asset - Actif	
<b>CAPE LAZO CANADIAN COAST GUARD ELECTRONICS WORKSHOP</b>	
Drawing - Dessin	
<b>PROPOSED TOWER SITE PLAN</b>	
drawn - dessiné	date
TDK	2019-05-16
designed - conception	date
S.CHILDS	2019-05-16
checked - vérifié	date
S.CHILDS	2019-05-16
approved - approuvé	date
-	
CCG ref. no. - no. ref. GCC	scale - échelle
8B200	AS SHOWN
drawing no. - no. dessin	sheet/feuille rev-rév
WM-110-1012	01/01 0



0	AS-BUILT	JAN. 1993
revisions		date



project  
CAPE LAZO  
COMOX B.C.  
CANADIAN COAST GUARD  
MARINE RADIO STATION

drawing  
SITE SERVICES  
AND  
DETAILS

designed	S. FRIDAY	conced
date	MAY 1991	
drawn		designed
date		
reviewed	D. ROWLANDS	examined
date	MAY 1991	
approved	J. BROWN	approved
date	MAY 1991	
leader	D. REEVES	Supervision
PWC Project Manager		Administrateur de projets TPC
project number	709901	no. du projet
drawing no.		no. du dessin