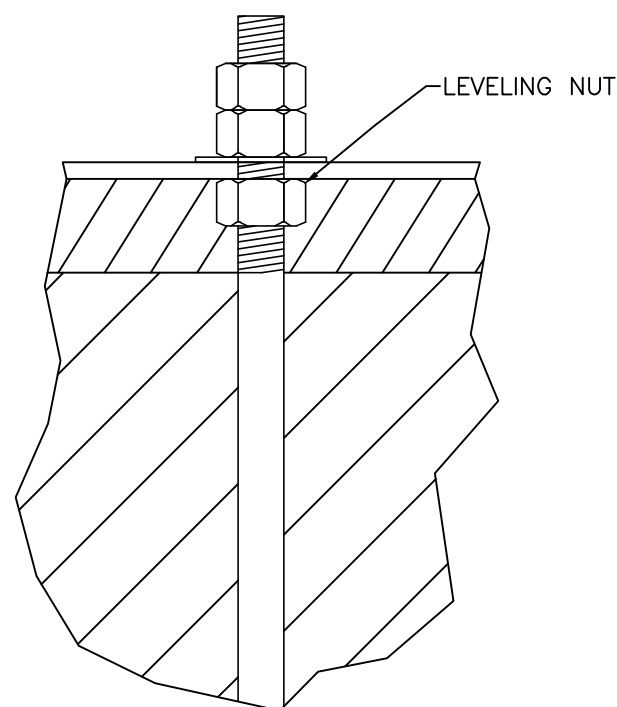


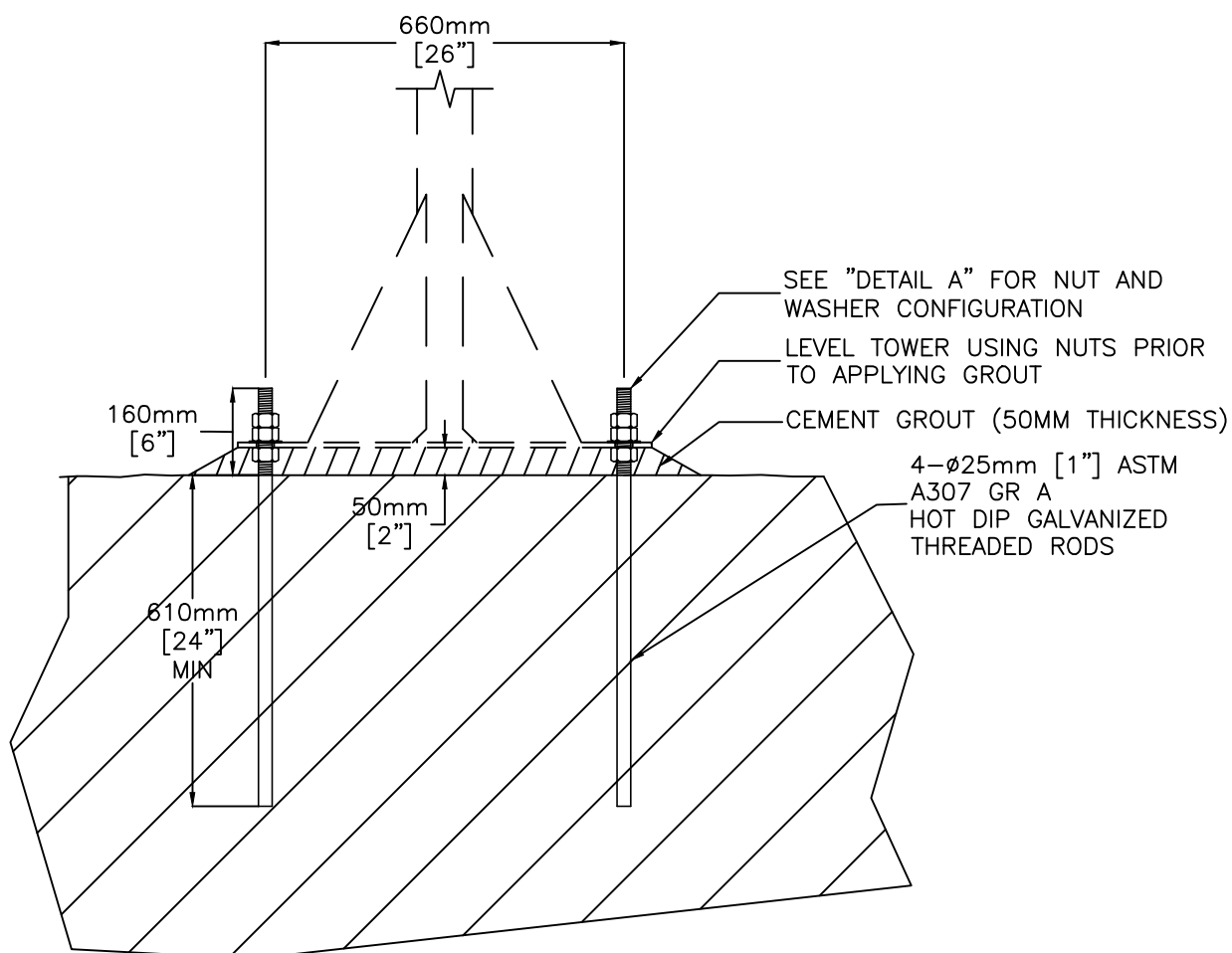
Vendor / Sous-traitant

NOTES:

1. CONFIRM INSTALLATION LOCATION WITH COAST GUARD
2. USING TEMPLATE, DRILL 4- $\phi$ 1-1/8" HOLES
3. CLEAN ALL HOLES AND REMOVE ANY LOOSE MATERIALS
4. INJECT HILTI RE 500 V3 EPOXY ADHESIVE AS PER MANUFACTURERS INSTALLATION INSTRUCTIONS
5. PLACE 4- $\phi$ 25MM [1"] ASTM A307 GR A GALVANIZED THREADED RODS IN HOLES IMMEDIATELY AFTER EPOXY INJECTION
6. USE LEVELING NUT AS NOTED IN DETAIL A TO ENSURE THE TOWER IS PLUMB
7. UPON COMPLETION OF INSTALLATION, CUT ANY EXCESS THREADS EXTENDING 25MM BEYOND TOP NUT, AND COLD-GALV SPRAY 2 COATS ON EXPOSED END OF ROD
8. GROUT - SIKA M-BED OR APPROVED ALTERNATE, MINIMUM THICKNESS OF 50MM
9. ROCK AT TOWER LOCATION WILL NOT BE LEVEL AS SHOWN. AS SUCH, THE CONTRACTOR SHALL MAKE CONSIDERATIONS TO ACCOMMODATE THE ROCK SLOPE. BARS SHALL NOT BE PRE-CUT TO THE MINIMUM 30 INCHES SHOWN (24+6)
10. IF A VOID IS ENCOUNTERED IN THE DRILLED HOLE, THE HOLE WILL BE DRILLED UNTIL A COMBINED 24 INCHES OF SOLID ROCK HAS BEEN ENCOUNTERED
11. THIS DRAWING APPLIES ONLY TO THE INSTALLATIONS NOTED UNDER "ASSET"



DETAIL A:  
COMPLETE WITH 3 NUTS  
AND 1 WASHER



SEE "DETAIL A" FOR NUT AND WASHER CONFIGURATION  
LEVEL TOWER USING NUTS PRIOR TO APPLYING GROUT  
CEMENT GROUT (50MM THICKNESS)  
4- $\phi$ 25mm [1"] ASTM A307 GR A HOT DIP GALVANIZED THREADED RODS

0	DESCRIPTION	BY	yyyy-mm-dd
rev	description	by	date

Asset - Actif  
**TOWER ANCHORING**  
LL1027, LL1028, LL1028.5,  
LL1029, LL1029.5

Drawing - Dessin  
**TOWER ROCK ANCHOR DETAILS**

designed - conception	date
BH	2019-06-27
drawn - dessiné	date
BH	2019-06-27
checked - vérifié	date
BH	2019-06-27
approved - approuvé	date
BY	2019-06-28

CCG ref. no. - no. réf. GCC	scale - échelle	
EWTM 8010-1027000	N.T.S	
drawing no. - no. dessin	sheet-feuille	rev
F2563-190036	01/01	0

C

B

A