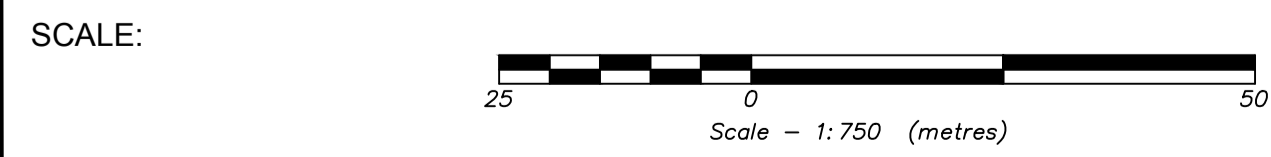


LEGEND:

2.0m MAJOR CONTOUR LINE

0.5m MINOR CONTOUR LINE

7.5m x 7.5m Grid Elev.




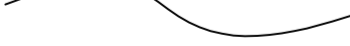
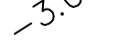
- NOTES:**
1. SURVEY PERFORMED ON AUG.1, 2018 BY V.P.D.L. SURVEY DEPARTMENT.
 2. DATA COLLECTION PARAMETERS:
 VESSEL: **STELLAR**
 HORIZONTAL POSITIONING: APPLANIX POSMV WAVEMASTER with CAN NET VRS RTK CORRECTIONS
 SOUNDING DATA: NORBIT iWBMS MULTIBEAM SONAR.
 3. SOUNDINGS ARE IN METRES AND REDUCED TO CHART DATUM . Chart Datum is 2.25m Lower than CGVD28.
 4. HORIZONTAL POSITIONS ARE REFERENCED TO NAD83 CSRS DATUM.
 5. EXISTING STRUCTURES FOR REFERENCE ONLY.
 6. DRAWING PLOTS 1:1 ON ISO A1 FORMAT AT SCALE SHOWN.

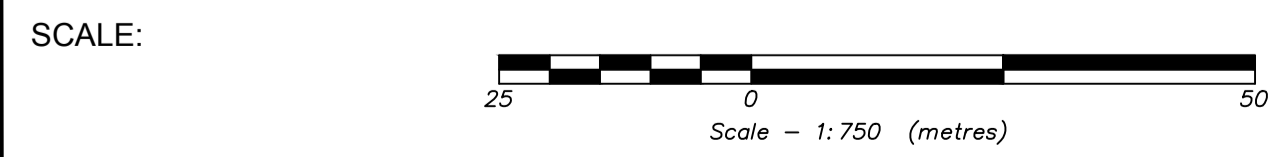
REV.	DESCRIPTION	BY	DATE
JOB NAME: CANNERY CHANNEL - PARAMOUNT SITE		SURVEY BY: JE / WY	DRAWN BY: WY
LOCATION: STEVESTON, BC		SCALE: 1:750	
		DATE: AUG.15, 2018	
		JOB NUMBER	DWG.
DESCRIPTION: BATHYMETRIC MONITOR		318008 80-01-101	PARA-01

C:\Autodesk\3-18-008\80-01-101_Steveston Channel Bathymetry\316008-8001102.dwg



LEGEND:

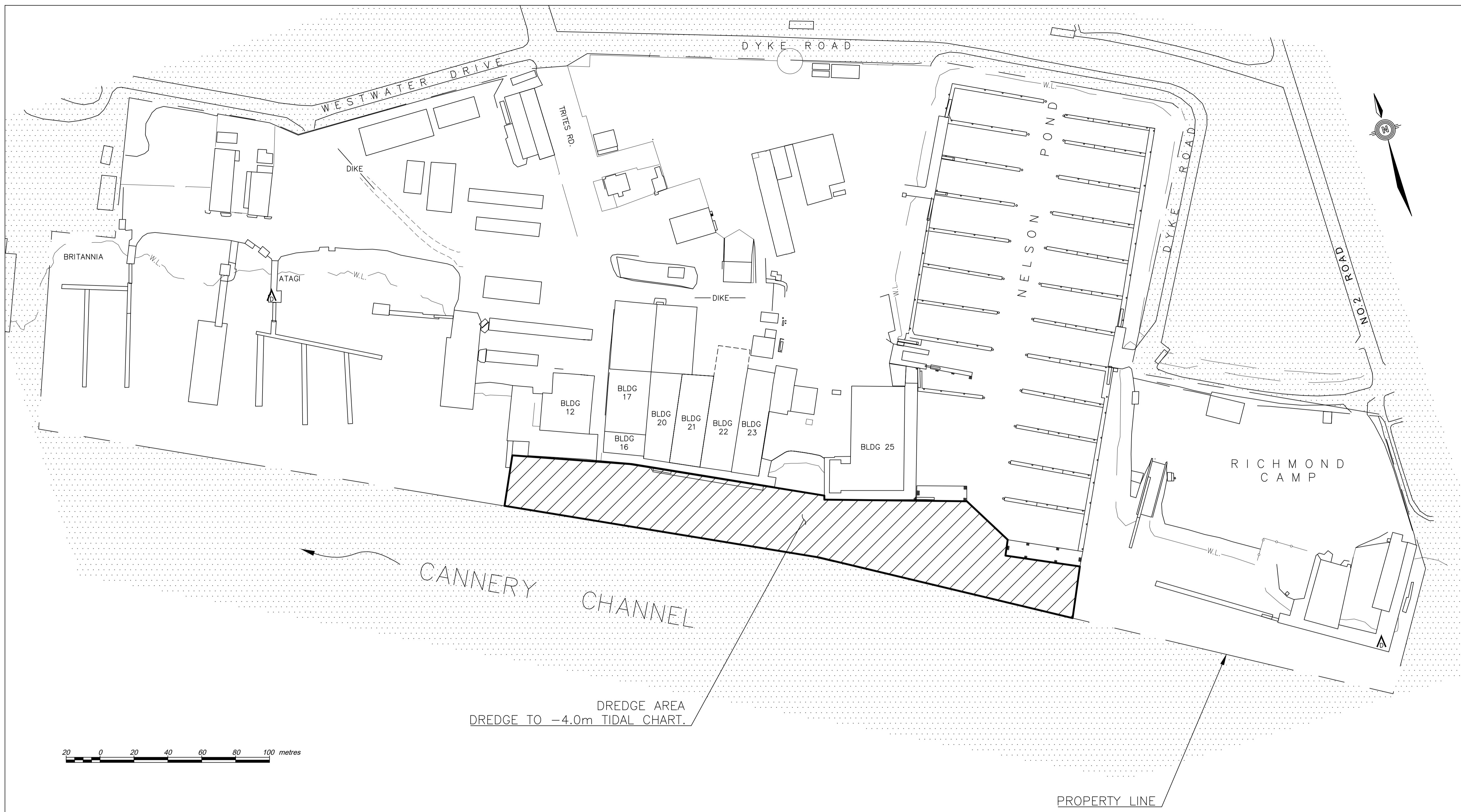
	2.0m MAJOR CONTOUR LINE
	0.5m MINOR CONTOUR LINE
	7.5m x 7.5m Grid Elev.



- NOTES:**
1. SURVEY PERFORMED ON AUG.1, 2018 BY V.P.D.L. SURVEY DEPARTMENT.
 2. DATA COLLECTION PARAMETERS:
 VESSEL: **STELLAR**
 HORIZONTAL POSITIONING: APPLANIX POSMV WAVEMASTER with CAN NET VRS RTK CORRECTIONS
 SOUNDING DATA: NORBIT iwBMS MULTIBEAM SONAR.
 3. SOUNDINGS ARE IN METRES AND REDUCED TO CHART DATUM . Chart Datum is 2.25m Lower than CGVD28.
 4. HORIZONTAL POSITIONS ARE REFERENCED TO NAD83 CSRS DATUM.
 5. EXISTING STRUCTURES FOR REFERENCE ONLY.
 6. DRAWING PLOTS 1:1 ON ISO A1 FORMAT AT SCALE SHOWN.

REV.	DESCRIPTION	BY	DATE

JOB NAME: CANNERY CHANNEL - PARAMOUNT SITE	SURVEY BY: JE / WY	DRAWN BY: WY
LOCATION: STEVESTON, BC	SCALE: 1:750	DATE: AUG.15, 2018
DESCRIPTION: BATHYMETRIC MONITOR	JOB NUMBER: 318008 80-01-101	DWG. PARA-02



DREDGE AREA
DREDGE TO -4.0m TIDAL CHART.

PROPERTY LINE

DRAWING NOTES:

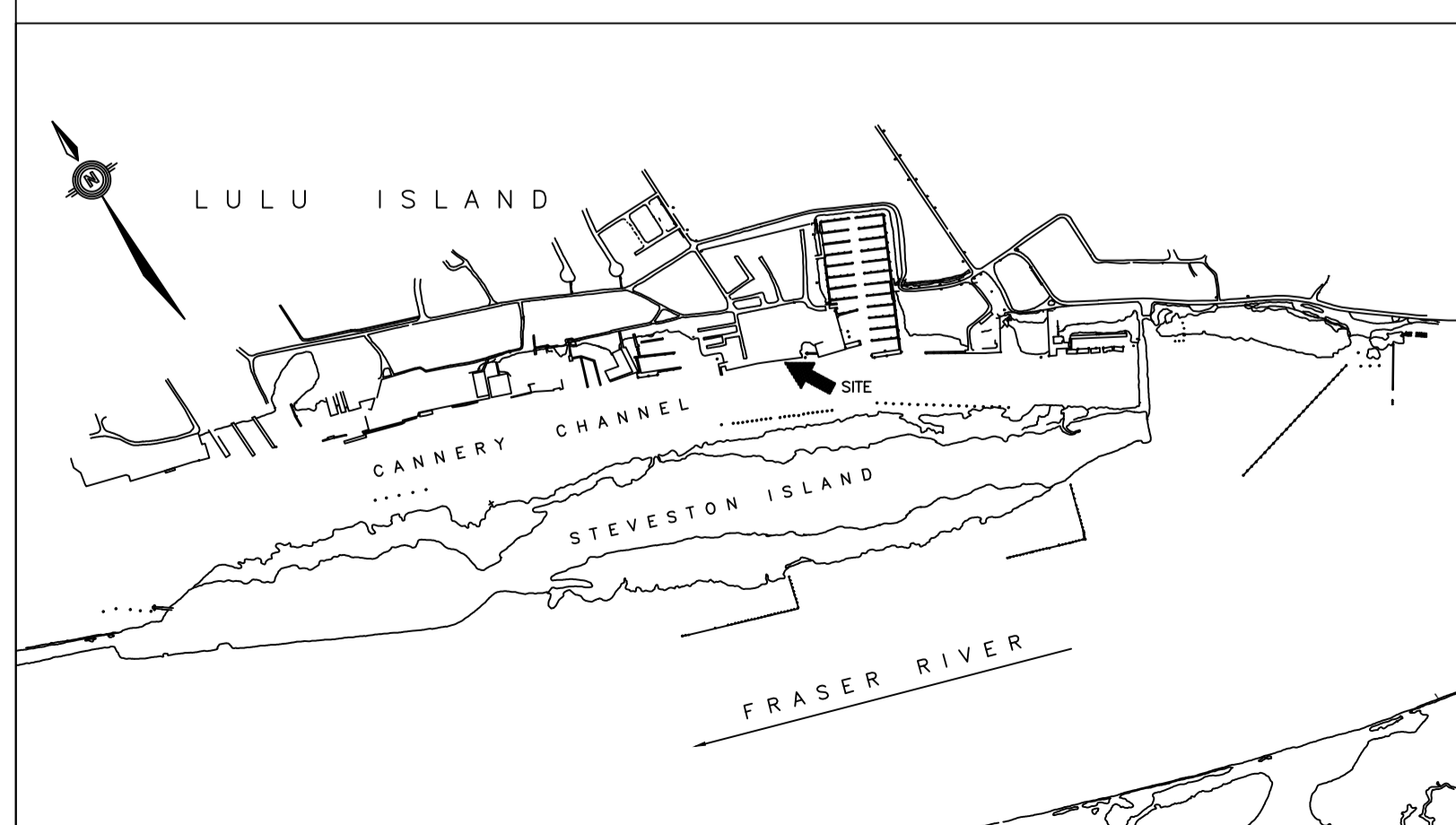
- NOT AN AS BUILT DRAWING.
- ALL ELEVATIONS IN METERS AND RELATED TO CANADIAN HYDROGRAPHIC SERVICES CHART DATUM.

TIDES:

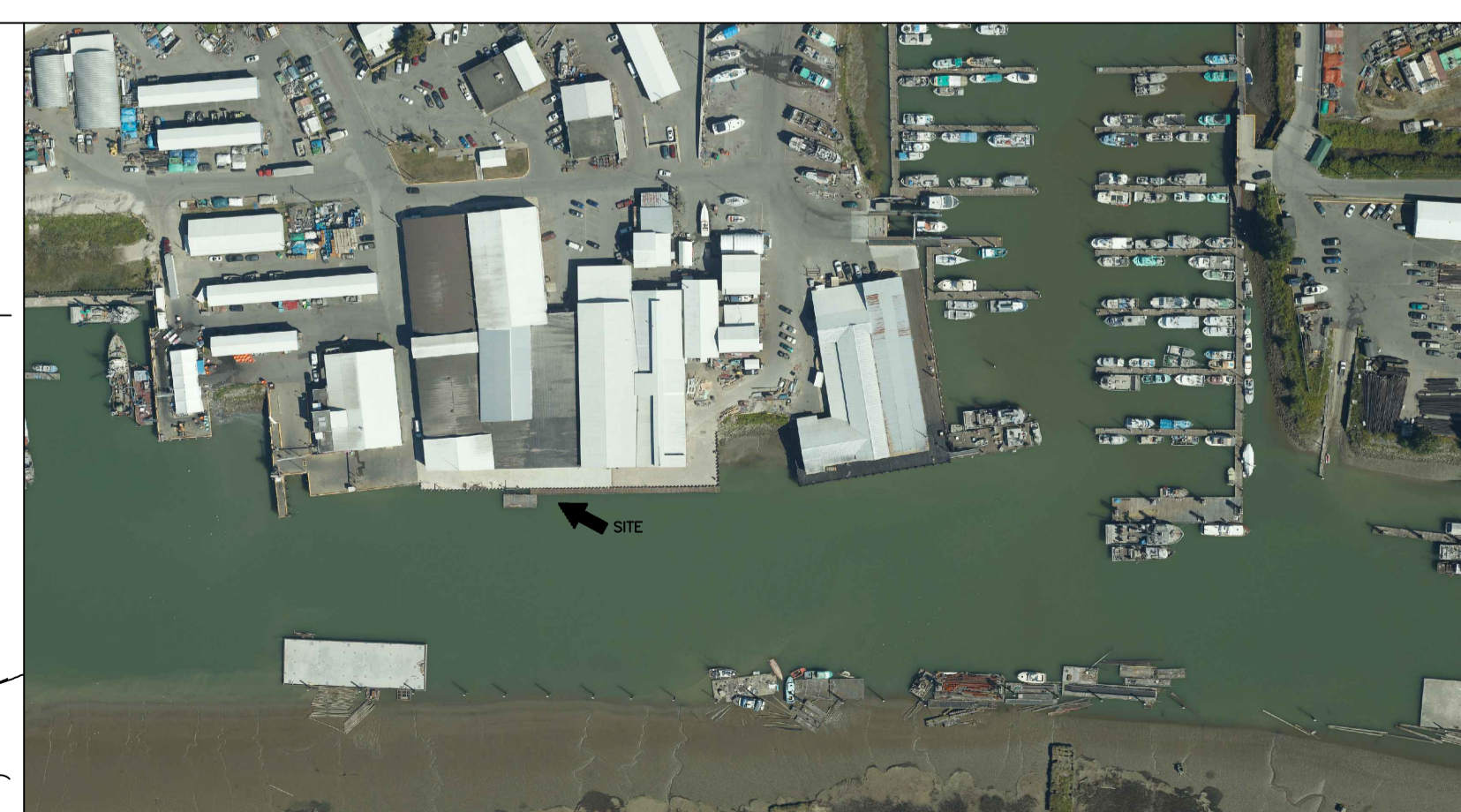
	GEODETIC DATUM	CHART DATUM
HIGH WATER LEVEL (H.W.L.)	+2.1m	+4.3m
MEAN WATER LEVEL (M.W.L.)	+0.2m	+2.4m
LOW WATER LEVEL (L.W.L.)	-2.4m	-0.2m

DREDGING NOTES:

- DREDGE TO -4.0m CHART DATUM.
- OVERDREDGE ALLOWANCE OF 0.5m.
- SIDE SLOPE ADJACENT TO ZONE BOUNDARIES OF 2:1 (HORIZONTAL TO VERTICAL).



LOCATION PLAN



AERIAL VIEW

Revision/Revision	Description/Description	Date/Date
0	ISSUED FOR TENDER	19/07/15

Client/client
Fisheries & Oceans Canada
Small Craft Harbours Branch
Pacific Division
200 - 401 Burrard Street
Vancouver, Canada, V6C 3S4

Project title/Titre du projet
STEVESTON HARBOUR

PARAMOUNT DREDGING 2019

Approved by/Approuvé par

Designed by/Concept par

Drawn by/Dessiné par

PWSC Project Manager/Administrateur de Projets TPSCG RC

PWSC Architectural and Engineering Resources Manager/Ressources Architectural et de Directeur d'Ingénierie, TPSCG

Client/client

Drawing title/Titre du dessin

STEVESTON PARAMOUNT DREDGE AREA

Project No./No. du projet	Sheet/Feuille	Revision no./La Révision no.
56279	001 OF 1	0