



RETURN BIDS TO:

RETOURNER LES SOUMISSIONS À:

Bid Receiving Public Works and Government
Services Canada/Réception des soumissions Travaux
publics et Services gouvernementaux Canada

1713 Bedford Row

Halifax, N.S./Halifax, (N.É.)

Halifax

Nova Scotia

B3J 1T3

Bid Fax: (902) 496-5016

SOLICITATION AMENDMENT MODIFICATION DE L'INVITATION

The referenced document is hereby revised; unless otherwise
indicated, all other terms and conditions of the Solicitation
remain the same.

Ce document est par la présente révisé; sauf indication contraire,
les modalités de l'invitation demeurent les mêmes.

Comments - Commentaires

Vendor/Firm Name and Address

Raison sociale et adresse du
fournisseur/de l'entrepreneur

Issuing Office - Bureau de distribution

Atlantic Region Acquisitions/Région de l'Atlantique
Acquisitions

1713 Bedford Row

Halifax, N.S./Halifax, (N.É.)

Halifax

Nova Scot

B3J 1T3

Title - Sujet TC - Furniture Request NFLD	
Solicitation No. - N° de l'invitation EC096-200866/A	Amendment No. - N° modif. 002
Client Reference No. - N° de référence du client EC096-20-0866	Date 2019-08-19
GETS Reference No. - N° de référence de SEAG PW-\$HAL-219-10755	
File No. - N° de dossier HAL-9-83072 (219)	CCC No./N° CCC - FMS No./N° VME
Solicitation Closes - L'invitation prend fin at - à 02:00 PM on - le 2019-08-26	Time Zone Fuseau horaire Atlantic Daylight Saving Time ADT
F.O.B. - F.A.B. Plant-Usine: <input type="checkbox"/> Destination: <input checked="" type="checkbox"/> Other-Autre: <input type="checkbox"/>	
Address Enquiries to: - Adresser toutes questions à: Richard, Linda K.	Buyer Id - Id de l'acheteur hal219
Telephone No. - N° de téléphone (902) 402-9059 ()	FAX No. - N° de FAX (902) 496-5016
Destination - of Goods, Services, and Construction: Destination - des biens, services et construction:	

Instructions: See Herein

Instructions: Voir aux présentes

Delivery Required - Livraison exigée	Delivery Offered - Livraison proposée
Vendor/Firm Name and Address Raison sociale et adresse du fournisseur/de l'entrepreneur	
Telephone No. - N° de téléphone Facsimile No. - N° de télécopieur	
Name and title of person authorized to sign on behalf of Vendor/Firm (type or print) Nom et titre de la personne autorisée à signer au nom du fournisseur/ de l'entrepreneur (taper ou écrire en caractères d'imprimerie)	
Signature	Date

Cet amendement est publié pour refléter les changements suivants.

1. Sous date de clôture

Supprimer: 2019-08-21 2:00 p.m. HEA

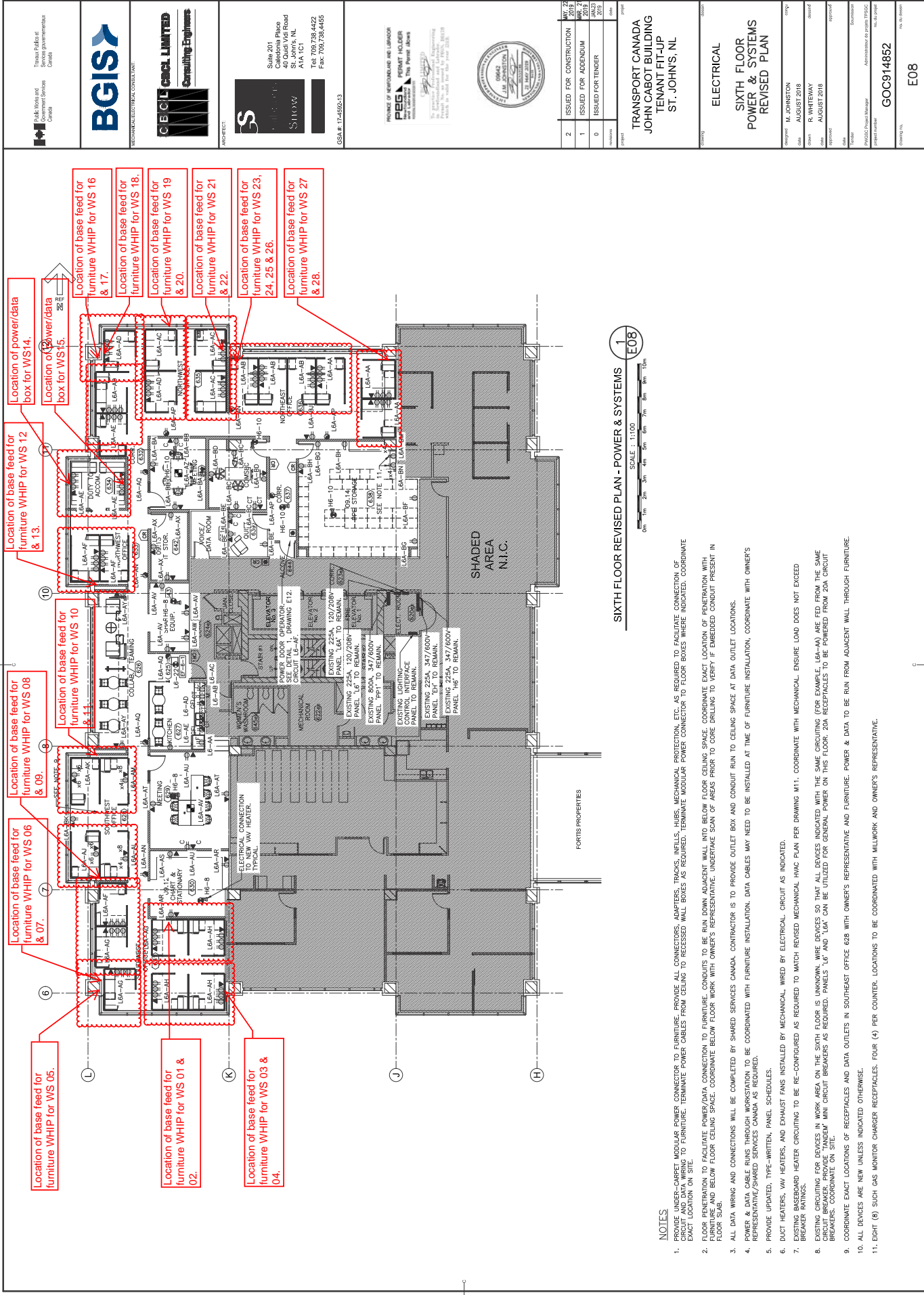
Insérer: 2019-08-26 2:00 p.m. HEA

2. Les pièces jointes

Supprimer: Les pieces joint

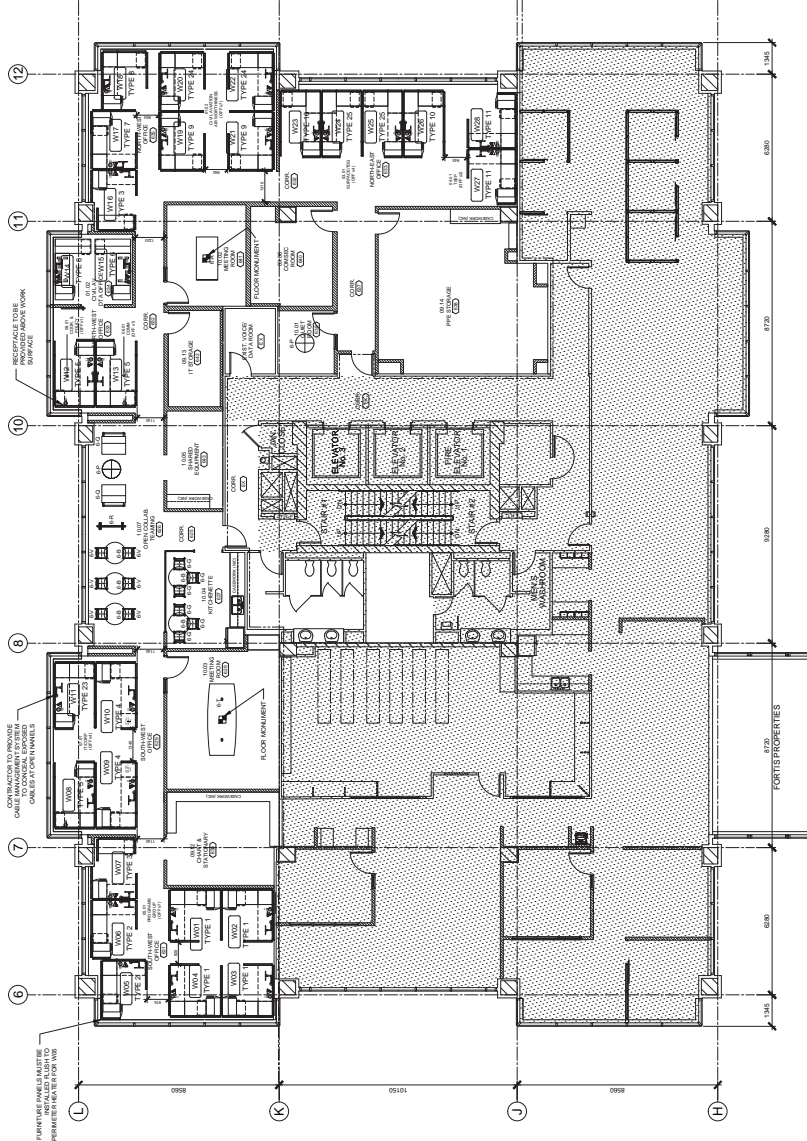
Insérer: Les pieces joint revisés

Tous les autres termes et conditions demeurent inchangées.



NOTES

1. PROVIDE UNDER-CARPET MODULAR POWER CONNECTOR TO FURNITURE. PROVIDE ALL CONNECTORS, ADAPTERS, TRACKS, INFILLS, HUBS, MECHANICAL PROTECTION, ETC. AS REQUIRED TO FACILITATE CONNECTION OF FURNITURE WHIP TO FURNITURE. TERMINATE POWER CABLES FROM CEILING TO RECESSED WALL BOXES AS REQUIRED. TERMINATE MODULAR POWER CONNECTOR TO FLOOR BOXES WHERE INDICATED. COORDINATE EXACT LOCATION ON SITE.
2. FLOOR PENETRATION TO FACILITATE POWER/DATA CONNECTION TO FURNITURE. CONDUITS TO BE RUN DOWN ADJACENT WALL INTO BELOW FLOOR CEILING SPACE. COORDINATE EXACT LOCATION OF PENETRATION WITH FURNITURE AND BELOW FLOOR CEILING SPACE. COORDINATE BELOW FLOOR WORK WITH OWNER'S REPRESENTATIVE. UNDERPANE SCAN OF AREAS PRIOR TO CORE DRILLING TO VERIFY IF EMBEDDED CONDUIT PRESENT IN FLOOR SLAB.
3. ALL DATA WIRING AND CONNECTIONS WILL BE COMPLETED BY SHARED SERVICES CANADA. CONTRACTOR IS TO PROVIDE OUTLET BOX AND CONDUIT RUN TO CEILING SPACE AT DATA OUTLET LOCATIONS.
4. POWER & DATA CABLE RUNS THROUGH WORKSTATION TO BE COORDINATED WITH FURNITURE INSTALLATION. DATA CABLES MAY NEED TO BE INSTALLED AT TIME OF FURNITURE INSTALLATION, COORDINATE WITH OWNER'S REPRESENTATIVE/SHARED SERVICES CANADA AS REQUIRED.
5. PROVIDE UPDATED, TYPE-WRITTEN, PANEL SCHEDULES.
6. DUCT HEATERS, VAV HEATERS, AND EXHAUST FANS INSTALLED BY MECHANICAL. WIRED BY ELECTRICAL. CIRCUIT AS INDICATED.
7. EXISTING BASEBOARD HEATER CIRCUITING TO BE RE-CONFIGURED AS REQUIRED TO MATCH REVISED MECHANICAL HVAC PLAN PER DRAWING M11. COORDINATE WITH MECHANICAL. ENSURE LOAD DOES NOT EXCEED BREAKER RATINGS.
8. EXISTING CIRCUITING FOR DEVICES IN WORK AREA ON THE SIXTH FLOOR IS UNKNOWN. WIRE DEVICES SO THAT ALL DEVICES INDICATED WITH THE SAME CIRCUITING (FOR EXAMPLE, LEA-A) ARE FED FROM THE SAME BREAKER. PROVIDE 'RANDOM' MINI CIRCUIT BREAKERS AS REQUIRED. PANELS 'LE' AND 'LA' CAN BE UTILIZED FOR GENERAL POWER ON THIS FLOOR. 20A RECEPTACLES TO BE POWERED FROM 20A CIRCUIT BREAKER. COORDINATE ON SITE.
9. COORDINATE EXACT LOCATIONS OF RECEPTACLES AND DATA OUTLETS IN SOUTHEAST OFFICE 628 WITH OWNER'S REPRESENTATIVE AND FURNITURE. POWER & DATA TO BE RUN FROM ADJACENT WALL THROUGH FURNITURE.
10. ALL DEVICES ARE NEW UNLESS INDICATED OTHERWISE.
11. EIGHT (8) SUCH GAS MONITOR CHARGER RECEPTACLES. FOUR (4) PER COUNTER. LOCATIONS TO BE COORDINATED WITH MILLWORK AND OWNER'S REPRESENTATIVE.



LEVEL 6 NEW FURNITURE PLAN



1
F1

DRAWING LEGEND:

NAME	ROOM NAME AND #
(Symbol)	OFFICE TYPE IDENTIFIER
(Symbol)	OFFICE TYPE
(Symbol)	TYPE 1 - OFFICE TYPE
(Symbol)	TYPE 2 - OFFICE TYPE
(Symbol)	TYPE 3 - OFFICE TYPE
(Symbol)	TYPE 4 - OFFICE TYPE
(Symbol)	TYPE 5 - OFFICE TYPE
(Symbol)	TYPE 6 - OFFICE TYPE
(Symbol)	TYPE 7 - OFFICE TYPE
(Symbol)	TYPE 8 - OFFICE TYPE
(Symbol)	TYPE 9 - OFFICE TYPE
(Symbol)	TYPE 10 - OFFICE TYPE
(Symbol)	TYPE 11 - OFFICE TYPE
(Symbol)	TYPE 12 - OFFICE TYPE
(Symbol)	DATA OUTLET
(Symbol)	COORDINATE WITH ELECTRICAL
(Symbol)	POWER OUTLET WITH 1.0M
(Symbol)	COORDINATE WITH ELECTRICAL

DRAWING NOTES:

- RIGHT HAND / LEFT HAND INSTALLATION AS SEE PLAN.
- CONTRACTOR TO CONFIRM ALL QUANTITIES.
- CONTRACTOR TO CONFIRM ALL QUANTITIES.
- CONTRACTOR TO CONFIRM ALL QUANTITIES.
- HEATERS UNLESS OTHERWISE NOTED ON DRAWING.

KEYBOARD TRAYS:
KEYBOARD TRAYS TO BE PROVIDED FOR ALL OFFICES
EXCLUDING THE FOLLOWING:

- W08
- W09
- W10
- W11
- W12
- W13
- W14
- W15
- W16
- W17
- W18
- W19
- W20
- W21
- W22
- W23
- W24
- W25
- W26
- W27
- W28
- W29
- W30
- W31
- W32



Shooy
Suite 201
Candor Place
St. John's, NL
A1A 1C1
Tel: 709.734.4122
Fax: 709.734.4455

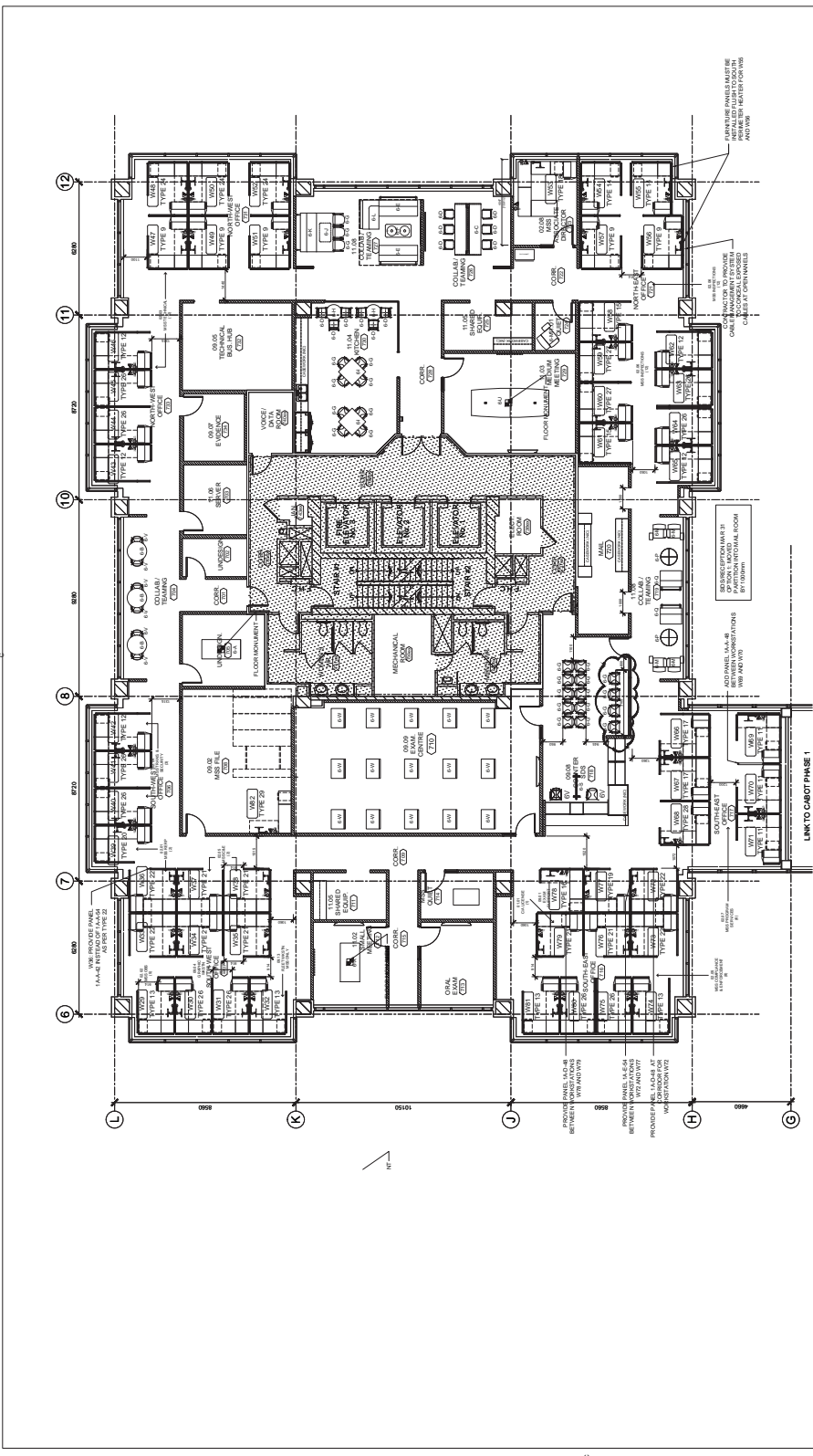
GSN # 17-4532-13

Not for Construction
Xref All Revisions to Project Schedule
JAN. 2019

REVISION	DESCRIPTION	DATE
2	REVISION 01	JAN 2019
0	ISSUED FOR TENDER	JUN 2018

TRANSPORT CANADA
JOHN CABOT BUILDING
TENANT FIT-UP
ST. JOHN'S, NL

Project Manager	T. BIRMINGHAM
Architect	C. BIRD
Interior Designer	J. BIRD
Electrical Engineer	J. BIRD
MEP Engineer	J. BIRD
Structural Engineer	J. BIRD
Project Number	GOC914852
Project Name	ANNEX C - F2



1
F2

LEVEL 7 FURNITURE PLAN

SCALE: 1:100

DRAWING LEGEND:

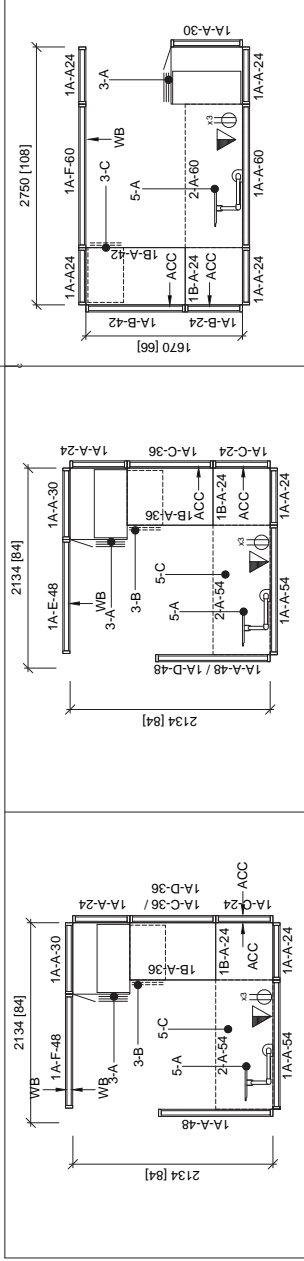
- ROOM NAME AND #
- OFFICE TYPE IDENTIFIER
- CATEGORY TYPE IDENTIFIER (CAT TYPE LENGTH INCHES)
- DATA OUTLET
- COORDINATE WITH ELECTRICAL
- POWER OUTLET WITH 2.0M
- COORDINATE WITH ELECTRICAL

DRAWING NOTES:

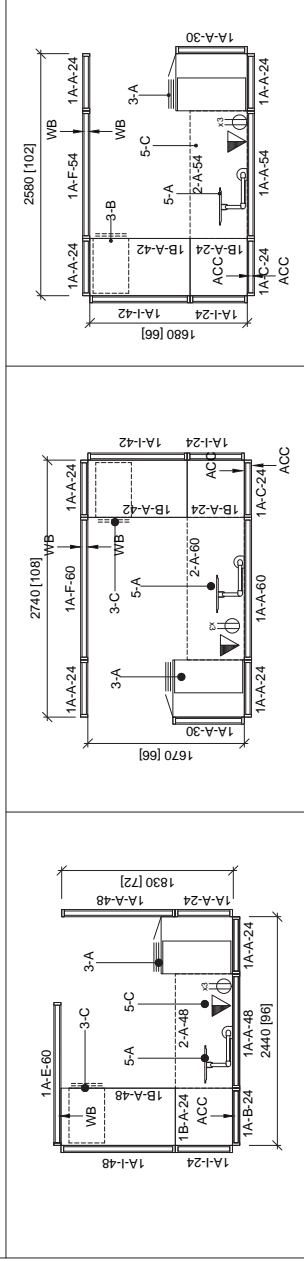
- RIGHT HAND / LEFT HAND INSTALLATION AS SEE PLAN.
- CONTRACTOR TO CONFIRM ALL QUANTITIES.
- ALL FURNITURE PANELS TO BE INSTALLED 4" CLEAR OF PERIMETER HEATERS UNLESS OTHERWISE NOTED ON DRAWING.

KEYBOARD TRAYS:
KEYBOARD TRAYS TO BE PROVIDED FOR ALL OFFICES EXCLUDING THE FOLLOWING:

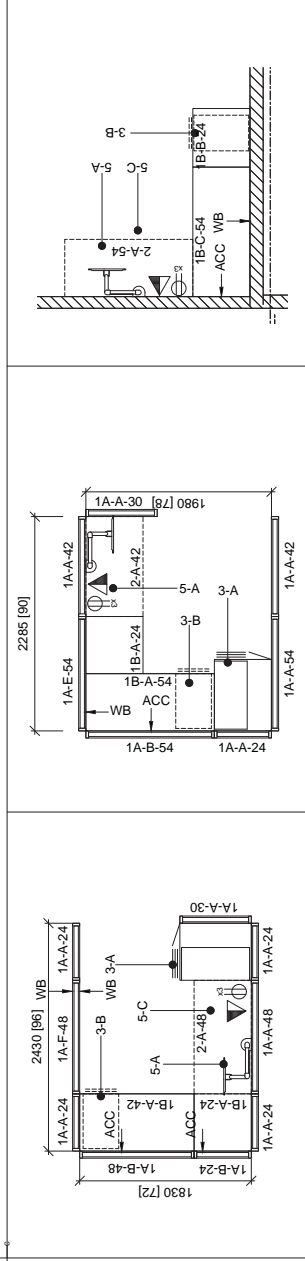
- W08
- W09
- W10
- W11
- W12
- W13
- W14
- W15
- W16
- W17
- W18
- W19
- W20
- W21
- W22
- W23
- W24
- W25
- W26
- W27
- W28
- W29
- W30
- W31
- W32



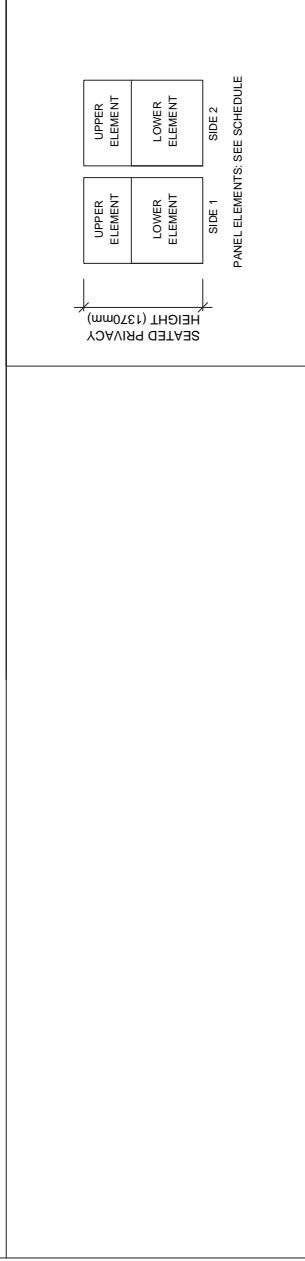
OFFICE TYPE 21 - 4.5m2



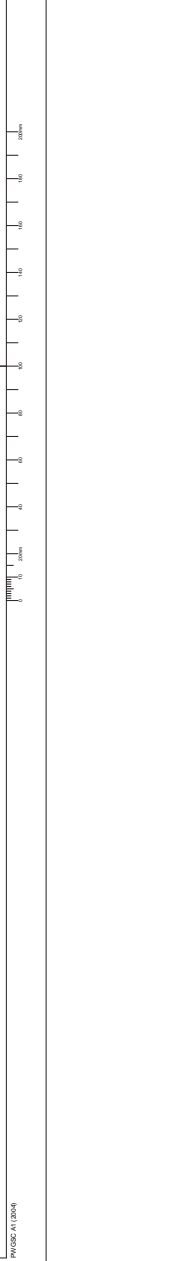
OFFICE TYPE 22 - 4.5m2



OFFICE TYPE 23 - 4.8m2



OFFICE TYPE 24 - 4.5m2



OFFICE TYPE 25 - 4.6m2

OFFICE TYPE 26 - 4.4m2

OFFICE TYPE 27 - 4.5m2

OFFICE TYPE 28 - 4.5m2

OFFICE TYPE 29

OFFICE TYPE 30

OFFICE TYPE 31

OFFICE TYPE 32

OFFICE TYPE 33

OFFICE TYPE 34

OFFICE TYPE 35

OFFICE TYPE 36

OFFICE TYPE 37

OFFICE TYPE 38

OFFICE TYPE 39

OFFICE TYPE 40

OFFICE TYPE 41

OFFICE TYPE 42

OFFICE TYPE 43

OFFICE TYPE 44

OFFICE TYPE 45

OFFICE TYPE 46

OFFICE TYPE 47

OFFICE TYPE 48

OFFICE TYPE 49

OFFICE TYPE 50

OFFICE TYPE 51

OFFICE TYPE 52

OFFICE TYPE 53

OFFICE TYPE 54

OFFICE TYPE 55

OFFICE TYPE 56

OFFICE TYPE 57

OFFICE TYPE 58

OFFICE TYPE 59

OFFICE TYPE 60

OFFICE TYPE 61

OFFICE TYPE 62

OFFICE TYPE 63

OFFICE TYPE 64

OFFICE TYPE 65

OFFICE TYPE 66

OFFICE TYPE 67

OFFICE TYPE 68

OFFICE TYPE 69

OFFICE TYPE 70