



RETURN BIDS TO:

RETOURNER LES SOUMISSIONS À:

**Bid Receiving Public Works and Government
Services Canada/Réception des soumissions Travaux
publics et Services gouvernementaux Canada**

1713 Bedford Row

Halifax, N.S./Halifax, (N.É.)

Halifax

Nova Scotia

B3J 1T3

Bid Fax: (902) 496-5016

**SOLICITATION AMENDMENT
MODIFICATION DE L'INVITATION**

The referenced document is hereby revised; unless otherwise indicated, all other terms and conditions of the Solicitation remain the same.

Ce document est par la présente révisé; sauf indication contraire, les modalités de l'invitation demeurent les mêmes.

Comments - Commentaires

Vendor/Firm Name and Address

**Raison sociale et adresse du
fournisseur/de l'entrepreneur**

Issuing Office - Bureau de distribution

Atlantic Region Acquisitions/Région de l'Atlantique
Acquisitions

1713 Bedford Row

Halifax, N.S./Halifax, (N.É.)

Halifax

Nova Scot

B3J 1T3

Title - Sujet TC - Furniture Request NFLD	
Solicitation No. - N° de l'invitation EC096-200866/A	Amendment No. - N° modif. 002
Client Reference No. - N° de référence du client EC096-20-0866	Date 2019-08-19
GETS Reference No. - N° de référence de SEAG PW-\$HAL-219-10755	
File No. - N° de dossier HAL-9-83072 (219)	CCC No./N° CCC - FMS No./N° VME
Solicitation Closes - L'invitation prend fin at - à 02:00 PM on - le 2019-08-26	Time Zone Fuseau horaire Atlantic Daylight Saving Time ADT
F.O.B. - F.A.B. Plant-Usine: <input type="checkbox"/> Destination: <input checked="" type="checkbox"/> Other-Autre: <input type="checkbox"/>	
Address Enquiries to: - Adresser toutes questions à: Richard, Linda K.	Buyer Id - Id de l'acheteur hal219
Telephone No. - N° de téléphone (902) 402-9059 ()	FAX No. - N° de FAX (902) 496-5016
Destination - of Goods, Services, and Construction: Destination - des biens, services et construction:	

Instructions: See Herein

Instructions: Voir aux présentes

Delivery Required - Livraison exigée	Delivery Offered - Livraison proposée
Vendor/Firm Name and Address Raison sociale et adresse du fournisseur/de l'entrepreneur	
Telephone No. - N° de téléphone Facsimile No. - N° de télécopieur	
Name and title of person authorized to sign on behalf of Vendor/Firm (type or print) Nom et titre de la personne autorisée à signer au nom du fournisseur/ de l'entrepreneur (taper ou écrire en caractères d'imprimerie)	
Signature	Date

This amendment is issued to reflect the following changes.

1. Under Bid Closing

Delete: 2019-08-21 2:00 p.m. ADT

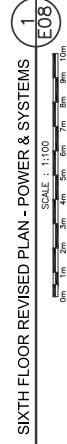
Insert: 2019-08-26 2:00 p.m. ADT

2. Attachments

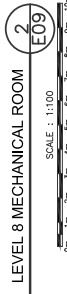
Delete: Attachments from RFB

Insert: Revised attachments (original had 2 of same floor)

All other terms and conditions remain unchanged.



- ## NOTES
1. **DATA CABLES:** CARRY MODULAR POWER CONNECTORS, ADAPTERS, TRACKS, INJECTS, WIRES, MECHANICAL PROTECTION, ETC. AS REQUIRED, TO FACILITATE CONNECTION OF EXACT LOCATION ON SITE.
 2. **FLOOR PENETRATION TO FACILITATE POWER/DATA CONNECTION:** CONDUITS TO BE RUN DOWN ADJACENT WALL INTO BELOW FLOOR CEILING SPACE. COORDINATE EXACT LOCATION OF PENETRATION WITH FURNITURE AND BELOW FLOOR CEILING SPACE WORK WITH OWNER'S REPRESENTATIVE. UNDERTAKE SCAN OF AREAS PRIOR TO CORE DRILLING TO VERIFY IF EMBEDDED CONDUIT PRESENT IN FLOOR SLAB.
 3. **ALL DATA WIRING AND CONNECTIONS WILL BE COMPLETED BY SHAWED SERVICES CANADA.** CONTRACTOR IS TO PROVIDE OUTLET BOX AND CONDUIT RUN TO CEILING SPACE AT DATA OUTLET LOCATIONS.
 4. **POWER & DATA CABLE RUNS THROUGH WORKSTATION TO BE COORDINATED WITH FURNITURE INSTALLATION.** DATA CABLES MAY NEED TO BE INSTALLED AT TIME OF FURNITURE INSTALLATION. COORDINATE WITH OWNER'S REPRESENTATIVE/SHAWED SERVICES CANADA AS REQUIRED.
 5. **PROVIDE UPDATED, TYPE-WRITTEN, PANEL SCHEDULES.**
 6. **DUCT HEATERS, VAV HEATERS, AND EXHAUST FANS INSTALLED BY MECHANICAL.** WIRED BY ELECTRICAL. CIRCUIT AS INDICATED.
 7. **EXISTING BASEBOARD HEATER CIRCUITING TO BE RE-CONFIGURED AS REQUIRED TO MATCH REVISED MECHANICAL HVAC PLAN PER DRAWING M11.** COORDINATE WITH MECHANICAL. ENSURE LOAD DOES NOT EXCEED BREAKER RATINGS.
 8. **EXISTING CIRCUITING FOR DEVICES IN WORK AREA ON THE SIXTH FLOOR IS UNKNOWN.** WIRE DEVICES SO THAT ALL DEVICES INDICATED WITH THE SAME CIRCUITING (FOR EXAMPLE, LISA-AM) ARE FED FROM THE SAME CIRCUIT BREAKER. PROVIDE "RANDOM" MINI CIRCUIT BREAKERS AS REQUIRED. PANELS "L6" AND "L6A" CAN BE UTILIZED FOR GENERAL POWER ON THIS FLOOR. 20A RECEPTACLES TO BE POWERED FROM 20A CIRCUIT BREAKERS. COORDINATE ON SITE.
 9. **COORDINATE EXACT LOCATIONS OF RECEPTACLES AND DATA OUTLETS IN SOUTHEAST OFFICE 628 WITH OWNER'S REPRESENTATIVE AND FURNITURE.** POWER & DATA TO BE RUN FROM ADJACENT WALL THROUGH FURNITURE.
 10. **ALL DEVICES ARE NEW UNLESS INDICATED OTHERWISE.**
 11. **EIGHT (8) SUCH GAS MONITOR CHARGER RECEPTACLES.** FOUR (4) PER COUNTER. LOCATIONS TO BE COORDINATED WITH MILLWORK AND OWNER'S REPRESENTATIVE.



1

PHGSC A1 (2004)

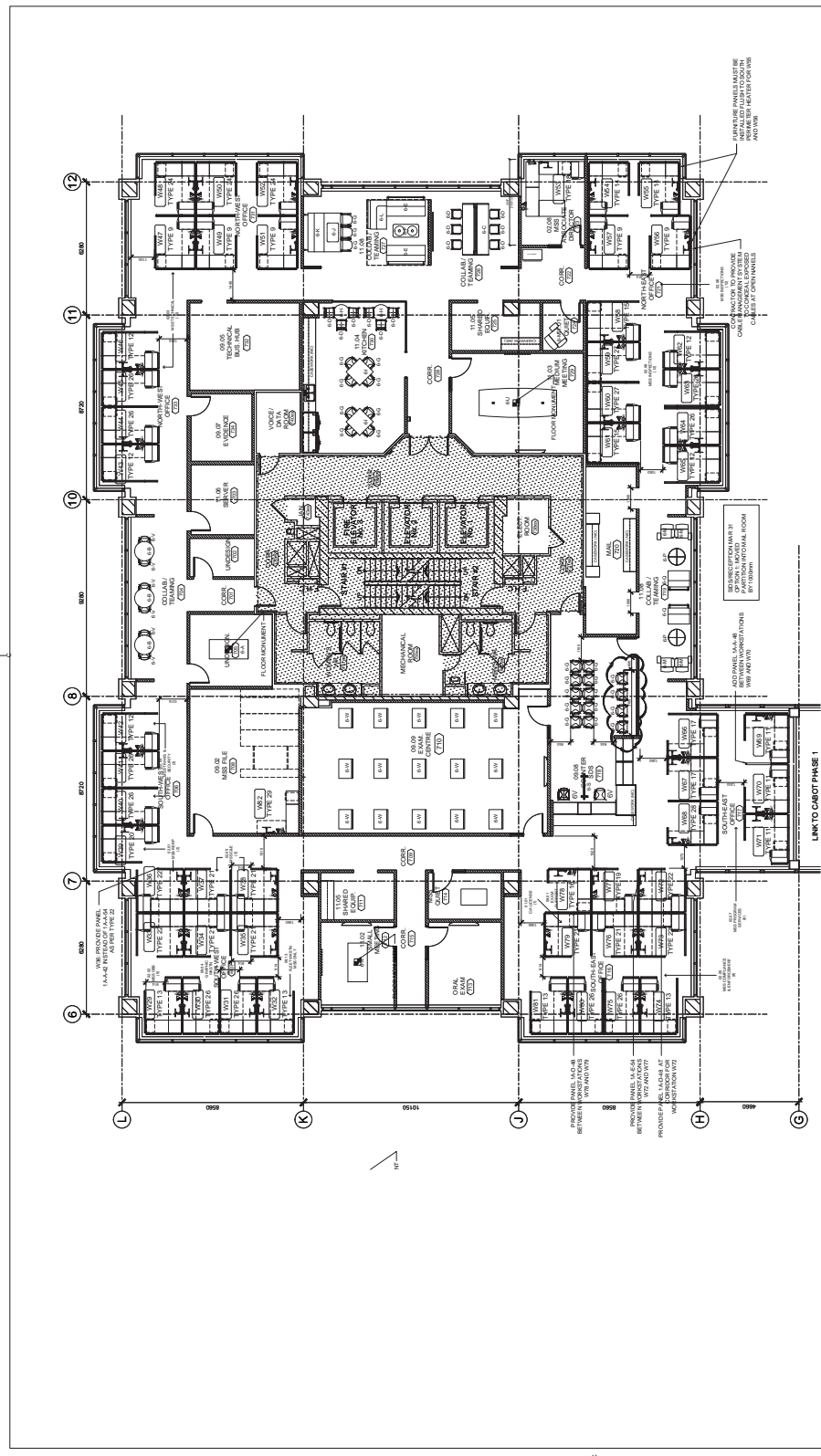
REVISION	DESCRIPTION	DATE
2	REVISION 01	JAN 2019
0	ISSUED FOR TENDER	JAN 2019

TRANSPORT CANADA
JOHN CABOT BUILDING
TENANT FIT-UP
ST. JOHN'S, NL

Level 7 Furniture Plan

LEVEL 7 FLOOR PLAN
FURNITURE KEYPLAN

Designed by	T. BIRMINGHAM
Drawn by	JULY 2018
Checked by	C. BIRD
Reviewed by	JULY 2018
Approved by	
Author	
Project Manager	ANNEX C - F2
Project Number	GOC914852
Drawing Title	ANNEX C - F2



LEVEL 7 FURNITURE PLAN

SCALE: 1:100

DRAWING LEGEND:

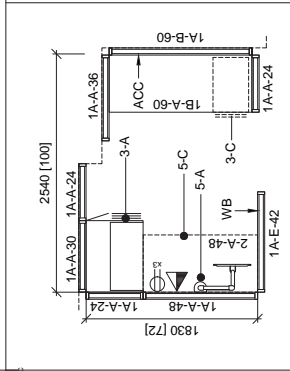
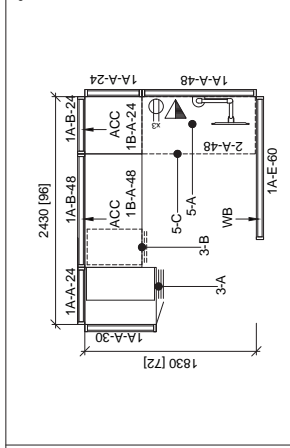
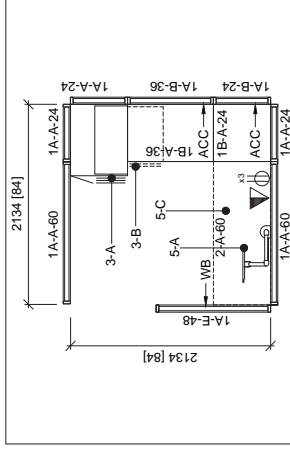
- ROOM NAME AND #
- OFFICE TYPE IDENTIFIER
- CATEGORY TYPE IDENTIFIER (CAT TYPE LENGTH INCHES)
- DATA OUTLET
- COORDINATE WITH ELECTRICAL
- POWER OUTLET WITH 2.0M
- COORDINATE WITH ELECTRICAL

DRAWING NOTES:

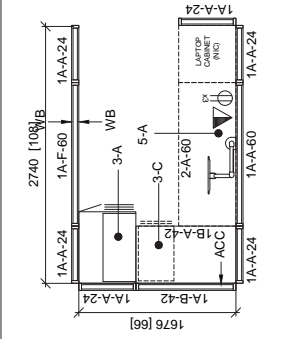
- RIGHT HAND / LEFT HAND INSTALLATION AS SEE PLAN.
- CONTRACTOR TO CONFIRM ALL QUANTITIES.
- ALL FURNITURE PANELS TO BE INSTALLED 4" CLEAR OF PERIMETER HEATERS UNLESS OTHERWISE NOTED ON DRAWING.

KEYBOARD TRAYS:
KEYBOARD TRAYS TO BE PROVIDED FOR ALL OFFICES EXCLUDING THE FOLLOWING:

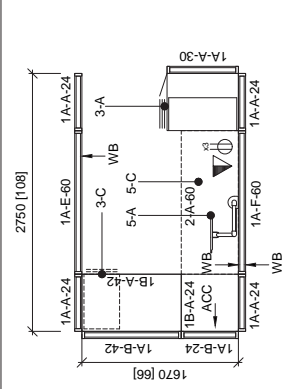
- W08
- W09
- W10
- W11
- W12
- W13
- W14
- W15
- W16
- W17
- W18
- W19
- W20
- W21
- W22
- W23
- W24
- W25
- W26
- W27
- W28
- W29
- W30
- W31
- W32



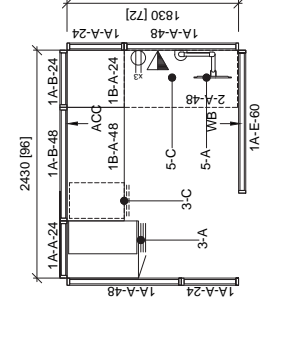
OFFICE TYPE 1 - 4.5m2



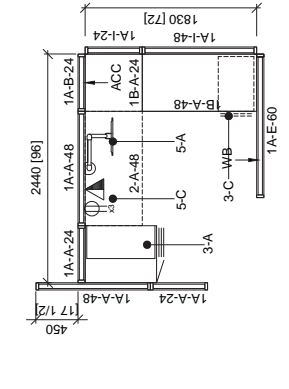
OFFICE TYPE 2 - 4.8m2



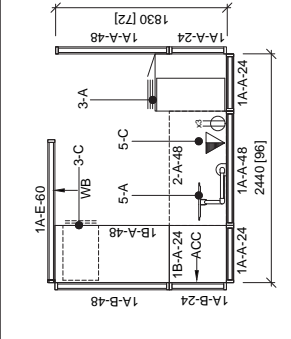
OFFICE TYPE 4 - 4.6m2



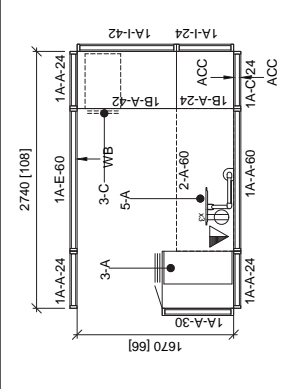
OFFICE TYPE 5 - 4.6m2



OFFICE TYPE 7 - 4.5m2



OFFICE TYPE 8 - 4.5m2



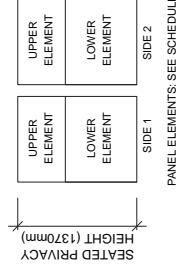
OFFICE TYPE 9 - 4.5m2



OFFICE TYPE 10 - 4.6m2



PANEL MATRIX





DRAWING NOTES:

1. RIGHT HAND /LEFT HAND INSTALLATION AS, SEE PLAN
2. ORIENTATION AS SHOWN ON PLAN.
3. CONTRACTOR TO CONFIRM ALL QUANTITIES

NOTES / LEGEND

[illegible]FURNITURE SCHEDULE


DRAWING LEGEND:

ROOM NAME AND #	OFFICE TYPE IDENTIFIER	CATEGORY TYPE IDENTIFIER (CAT TYPE, LENGTH IN INCHES)	DATA OUTLET CONNECTATE WITH ELECTRICAL	POWER OUTLET WITH 3 DEL. CIRCUIT BREAKERS W/STN. COORDINATE WITH ELECTRICAL	UPHOLST. STEREO PANEL ACCESSORY RAIL WHITE BOARD CLEAN GLAZING
1001B - OFFICE #	TYPE 1 - OFFICE TYPE	1A-A-##			FABRIC ACC WB GLASS

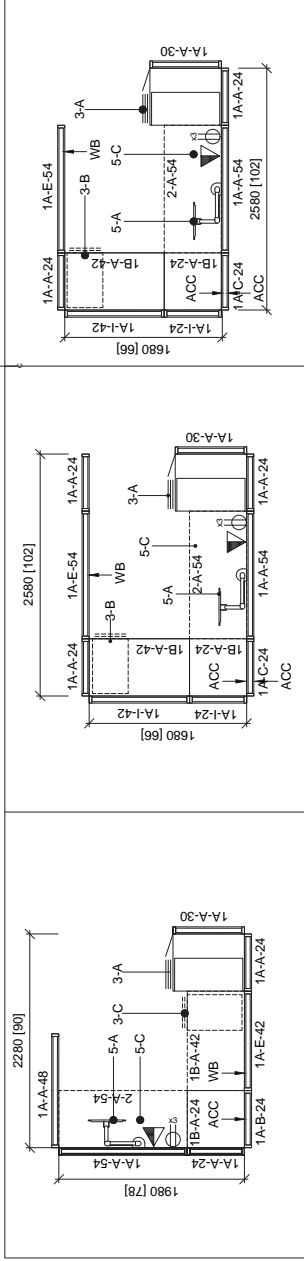
DRAWING NOTES:

1. RIGHT HAND / LEFT HAND INSTALLATION AS, SEE PLAN
2. ORIENTATION AS SHOWN ON PLAN.
3. CONTRACTOR TO CONFIRM ALL QUANTITIES.

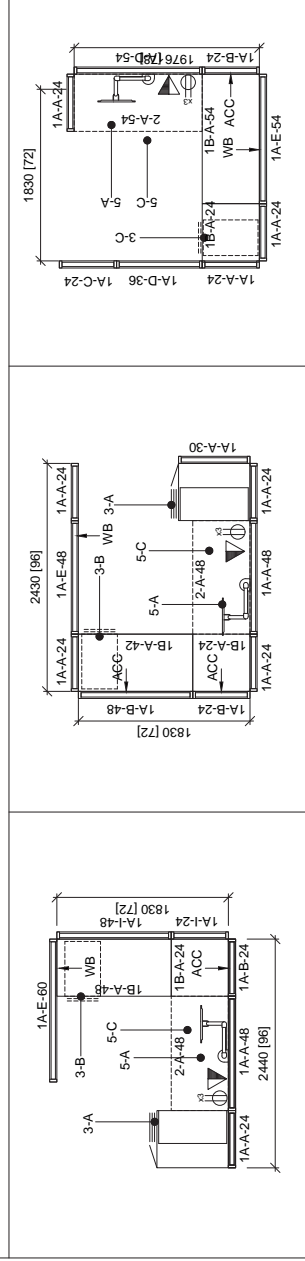
NOTES / LEGEND

 <p>Prime Minister Minister of Government Canada</p>	<p>Chief Minister Minister of Government Canada</p>	<p>Chief Minister Minister of Government Canada</p>
---	---	---

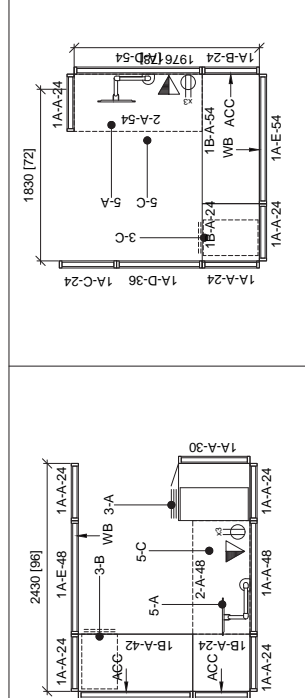
[illegible][illegible]



OFFICE TYPE 11 - 4.5m2

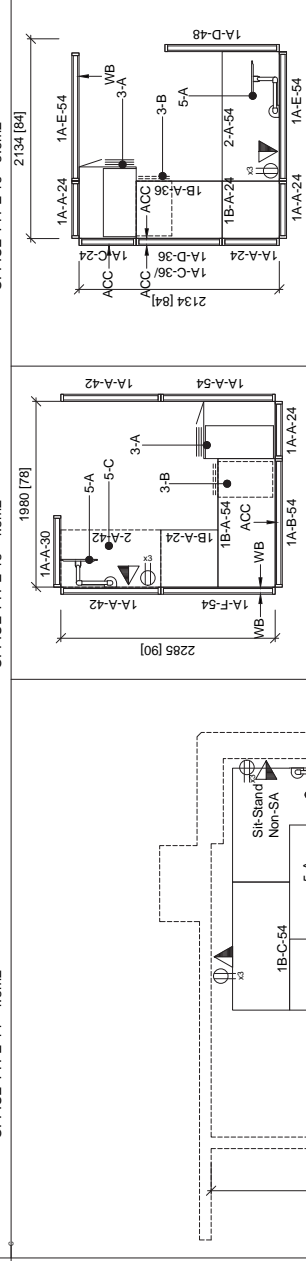


OFFICE TYPE 12 - 4.4m2

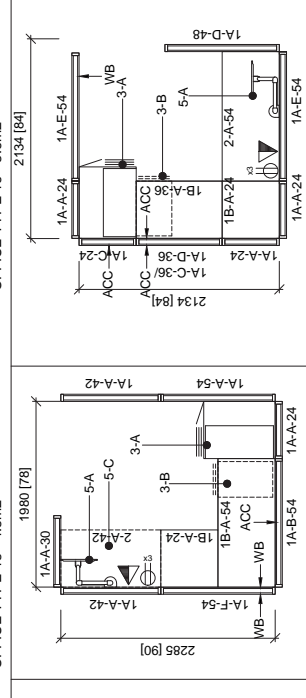


OFFICE TYPE 13 - 4.4m2

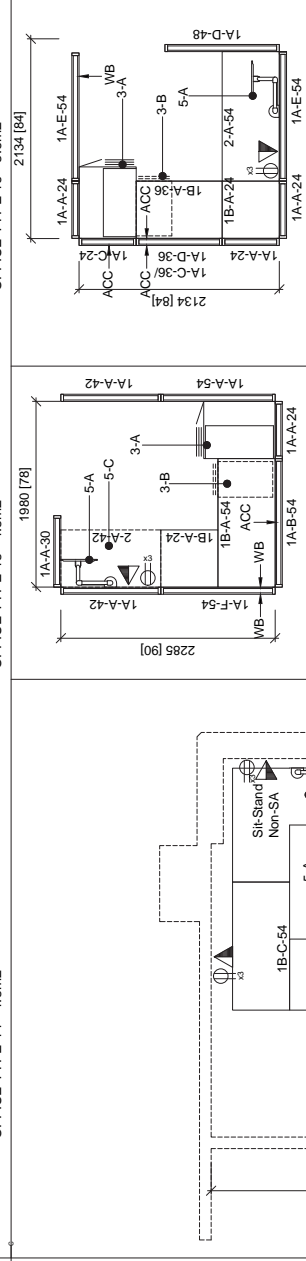
OFFICE TYPE 14 - 4.5m2



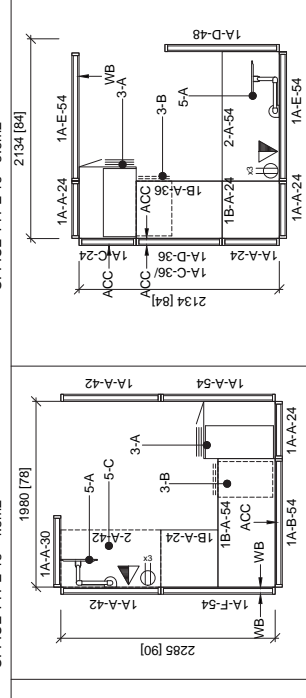
OFFICE TYPE 16 - 3.6m2



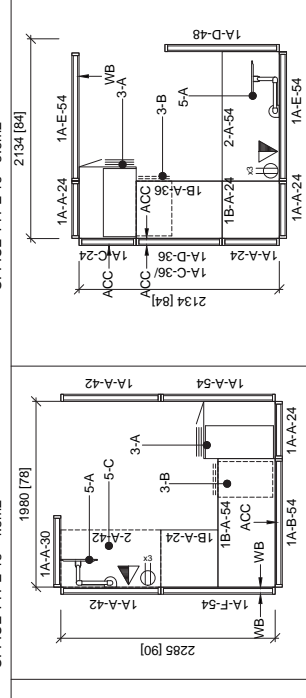
OFFICE TYPE 17 - 4.5m2



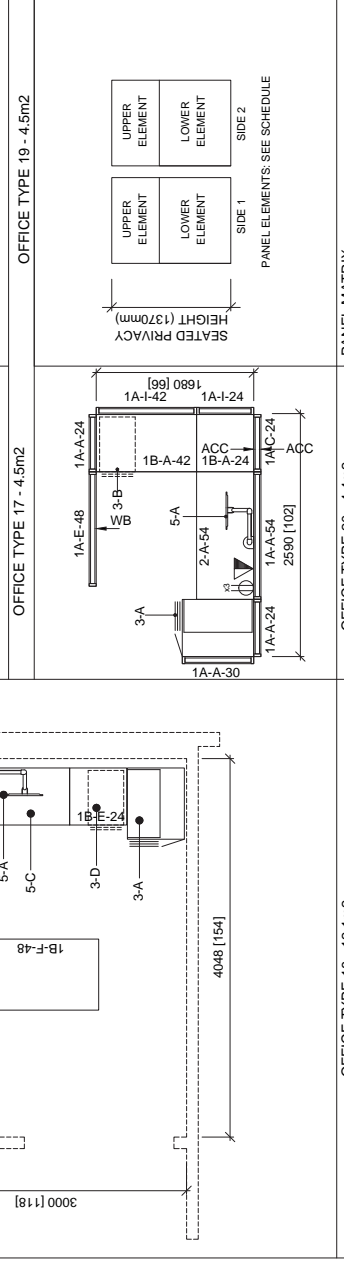
OFFICE TYPE 18 - 12.1m2



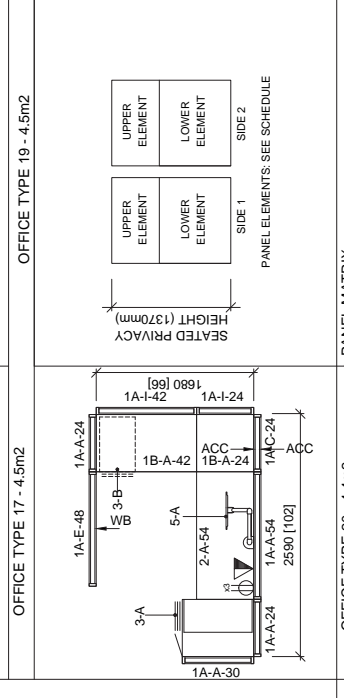
OFFICE TYPE 19 - 4.5m2



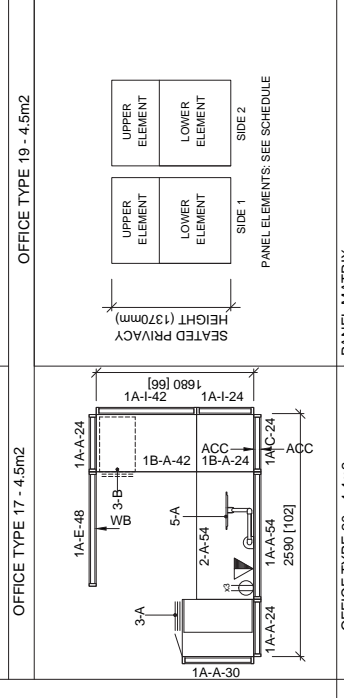
OFFICE TYPE 20 - 4.4m2



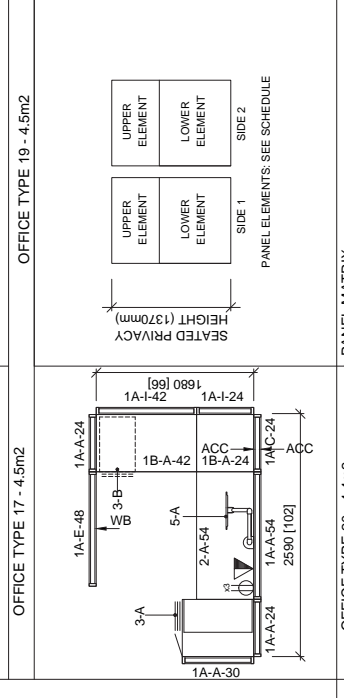
OFFICE TYPE 21 - 4.4m2



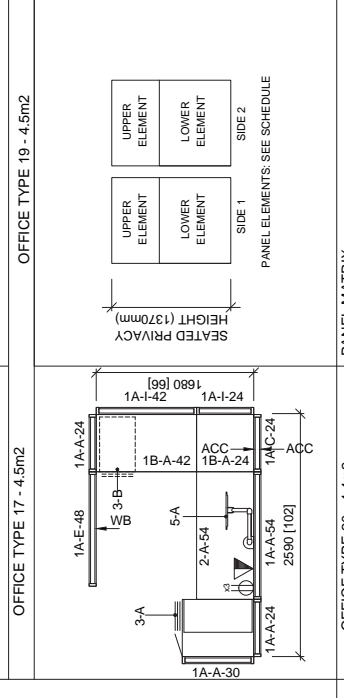
OFFICE TYPE 22 - 4.4m2



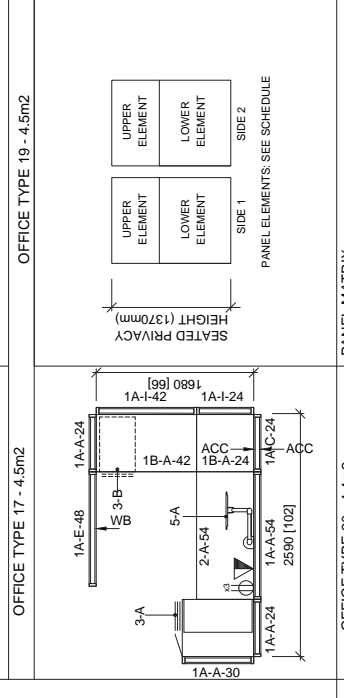
OFFICE TYPE 23 - 4.4m2



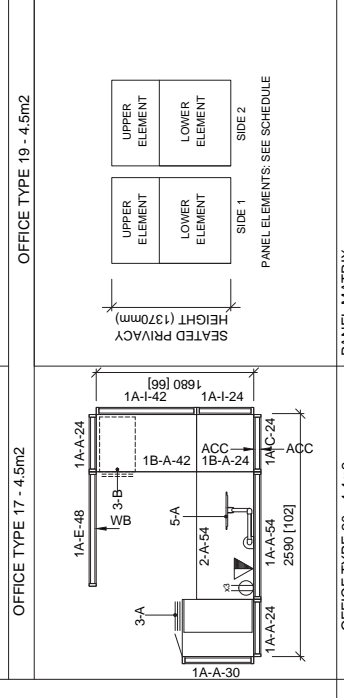
OFFICE TYPE 24 - 4.4m2



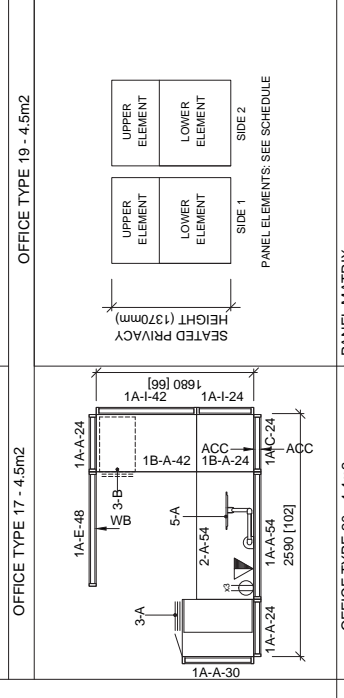
OFFICE TYPE 25 - 4.4m2



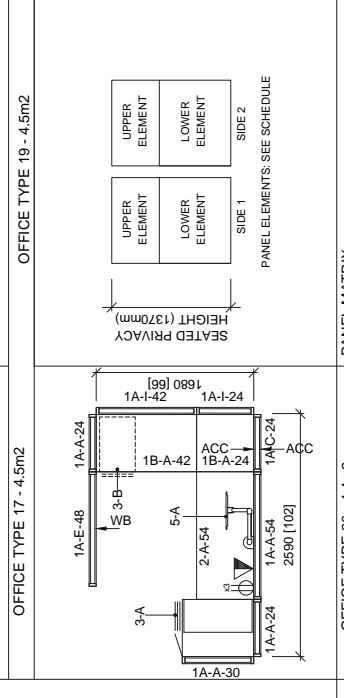
OFFICE TYPE 26 - 4.4m2



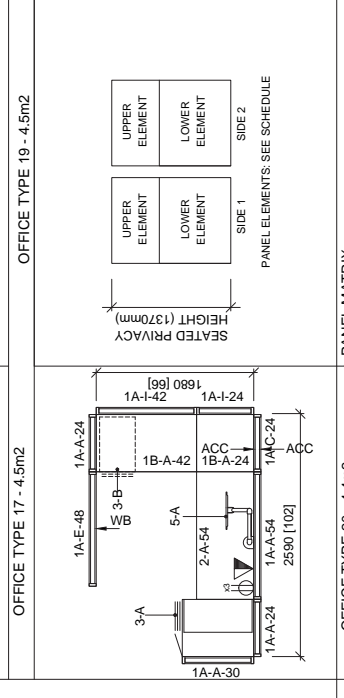
OFFICE TYPE 27 - 4.4m2



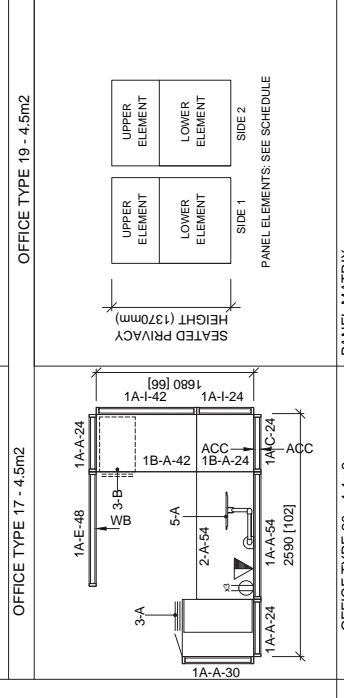
OFFICE TYPE 28 - 4.4m2



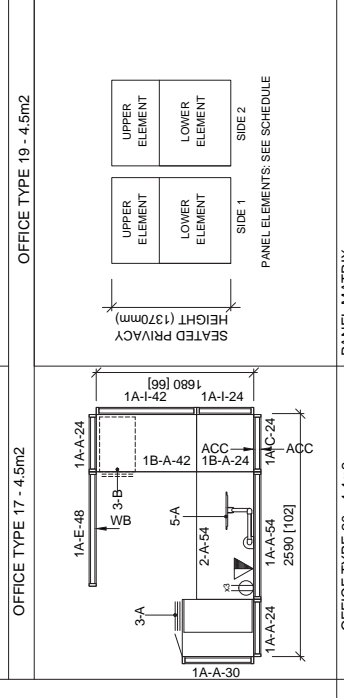
OFFICE TYPE 29 - 4.4m2



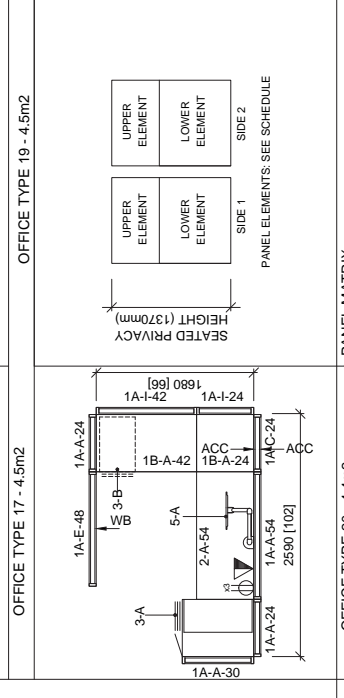
OFFICE TYPE 30 - 4.4m2



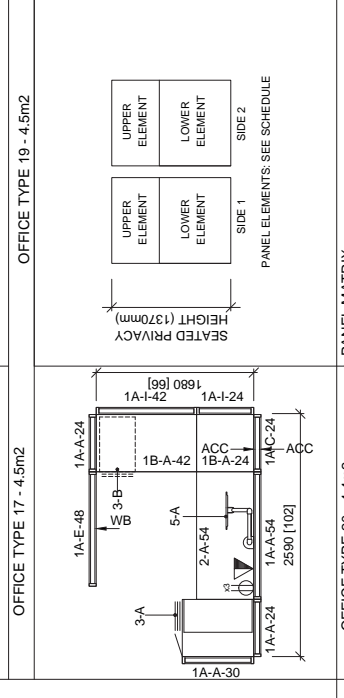
OFFICE TYPE 31 - 4.4m2



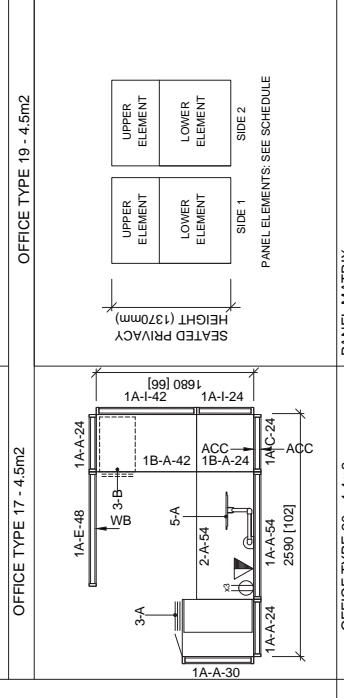
OFFICE TYPE 32 - 4.4m2



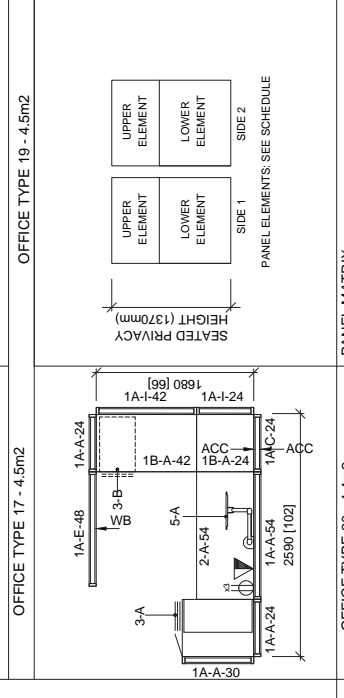
OFFICE TYPE 33 - 4.4m2



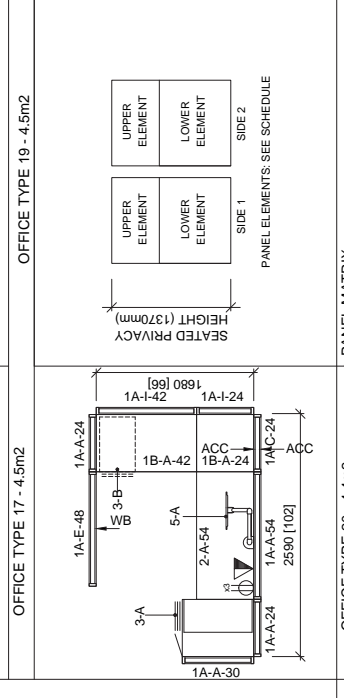
OFFICE TYPE 34 - 4.4m2



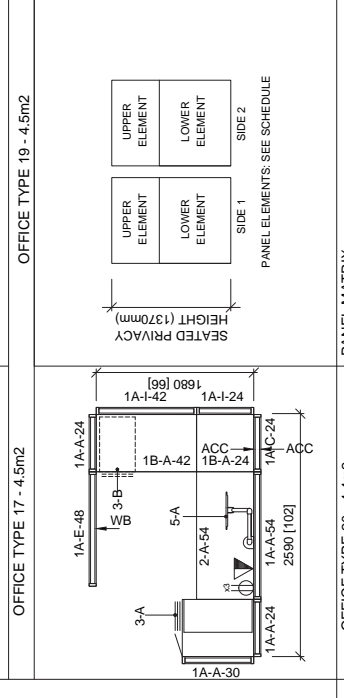
OFFICE TYPE 35 - 4.4m2



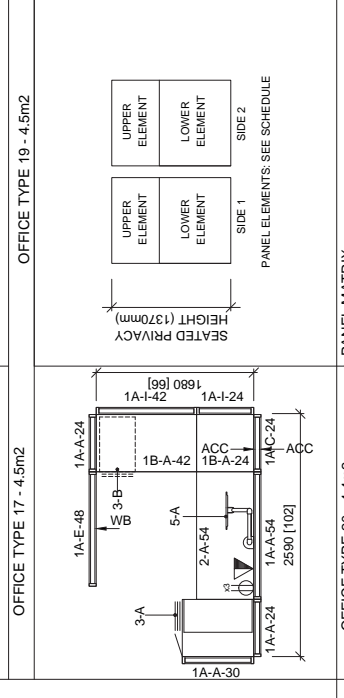
OFFICE TYPE 36 - 4.4m2



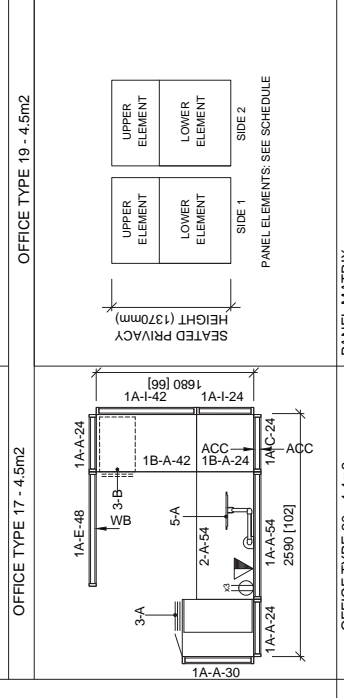
OFFICE TYPE 37 - 4.4m2



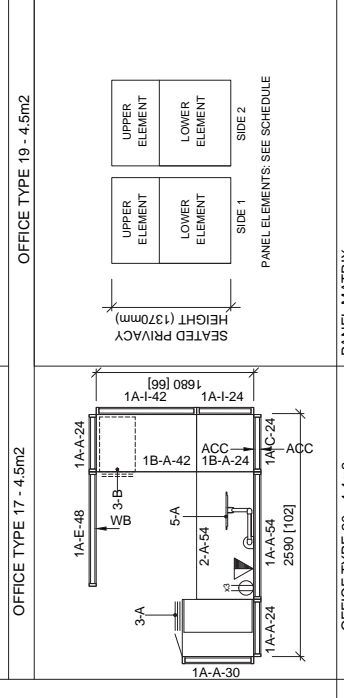
OFFICE TYPE 38 - 4.4m2



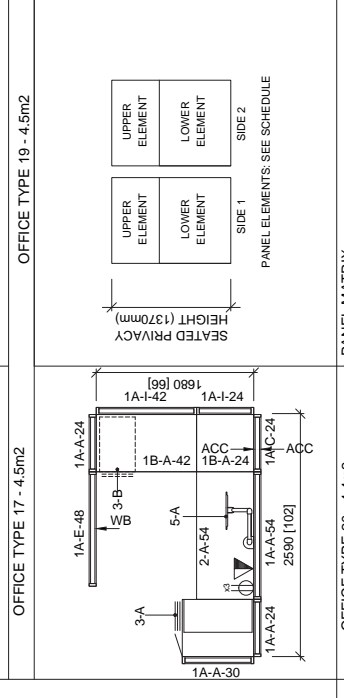
OFFICE TYPE 39 - 4.4m2



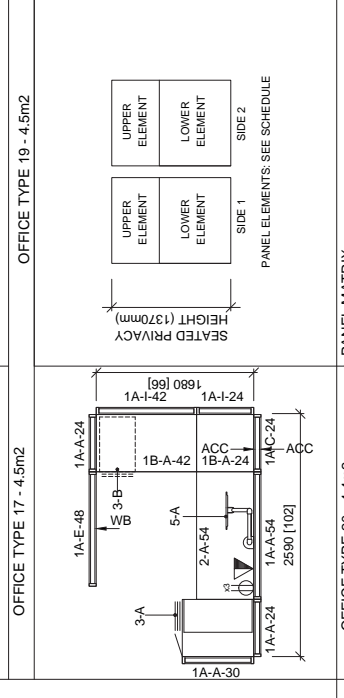
OFFICE TYPE 40 - 4.4m2



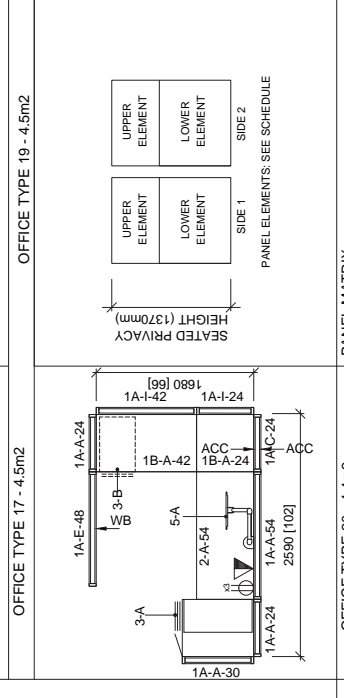
OFFICE TYPE 41 - 4.4m2



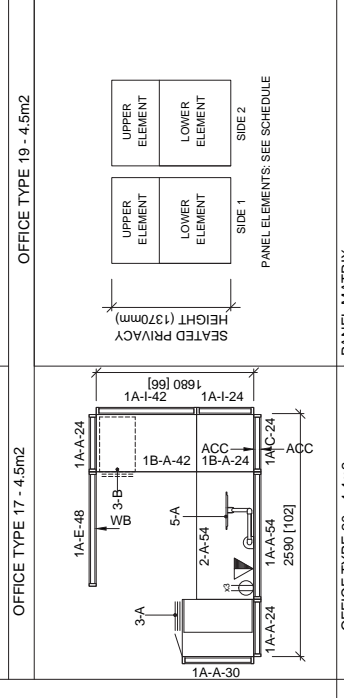
OFFICE TYPE 42 - 4.4m2



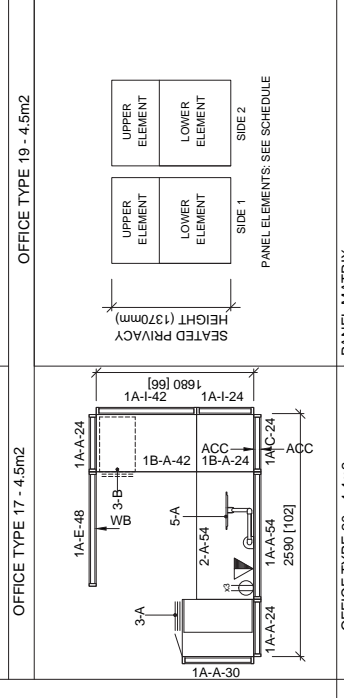
OFFICE TYPE 43 - 4.4m2



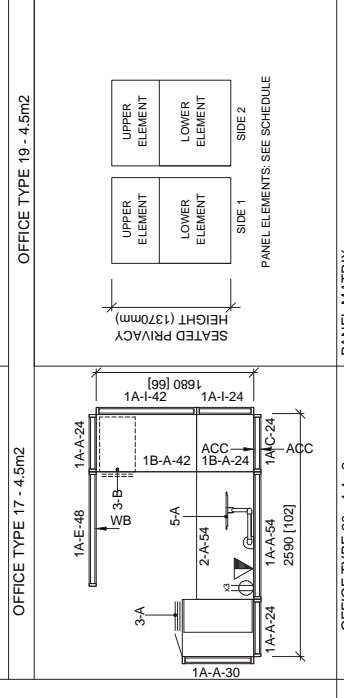
OFFICE TYPE 44 - 4.4m2



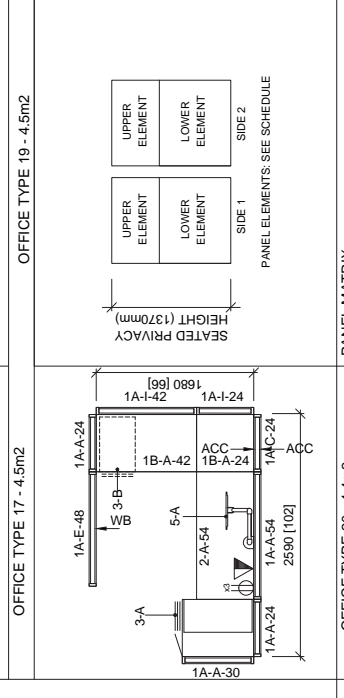
OFFICE TYPE 45 - 4.4m2



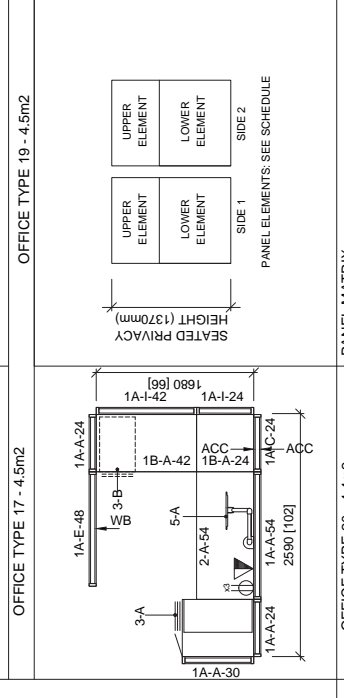
OFFICE TYPE 46 - 4.4m2



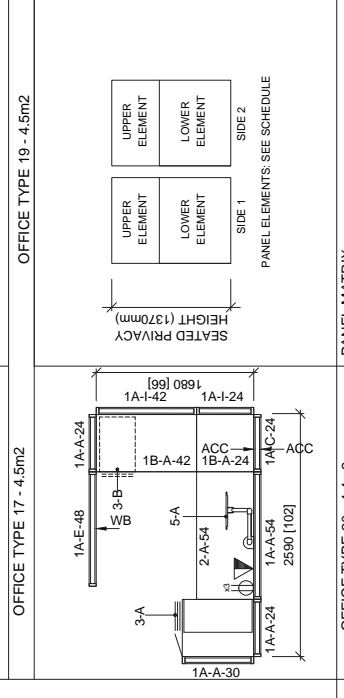
OFFICE TYPE 47 - 4.4m2



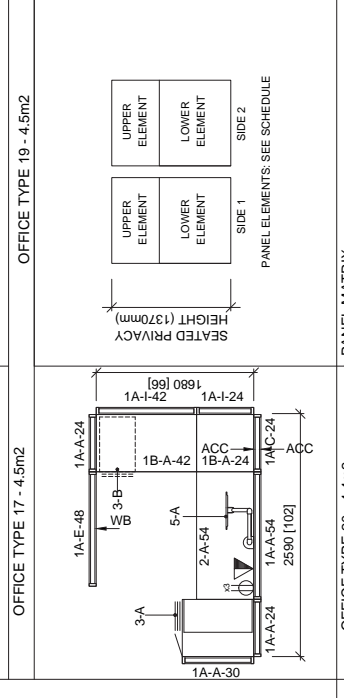
OFFICE TYPE 48 - 4.4m2



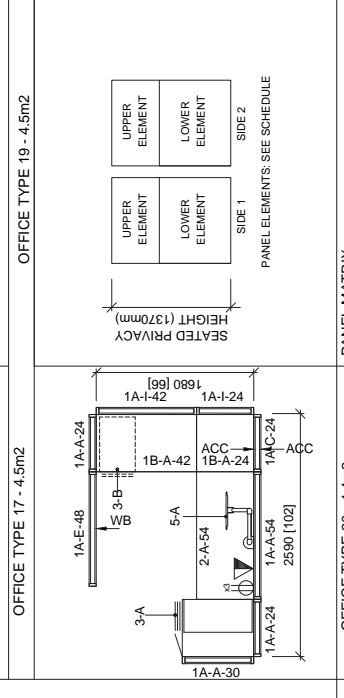
OFFICE TYPE 49 - 4.4m2



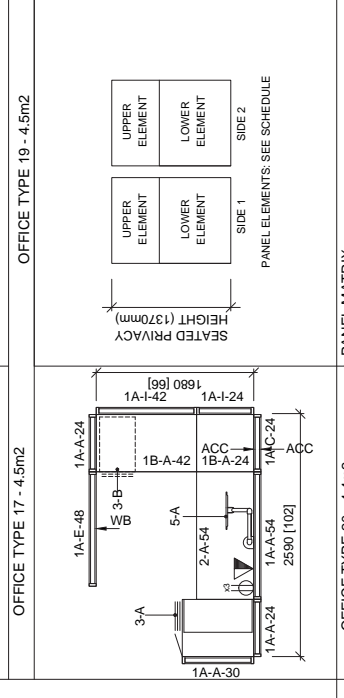
OFFICE TYPE 50 - 4.4m2



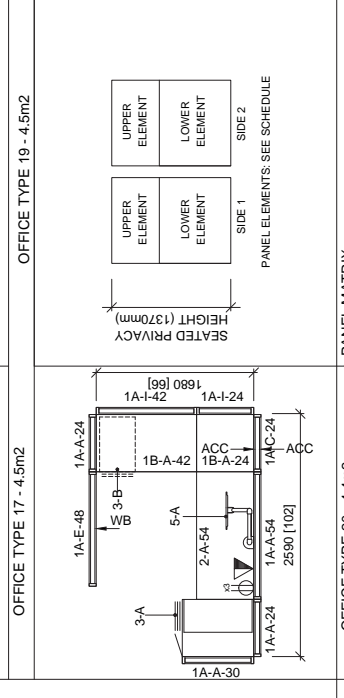
OFFICE TYPE 51 - 4.4m2



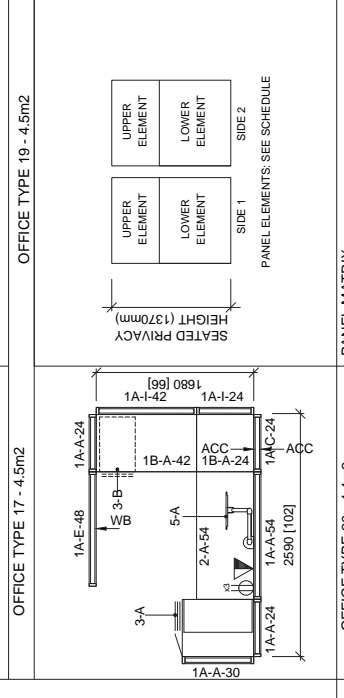
OFFICE TYPE 52 - 4.4m2



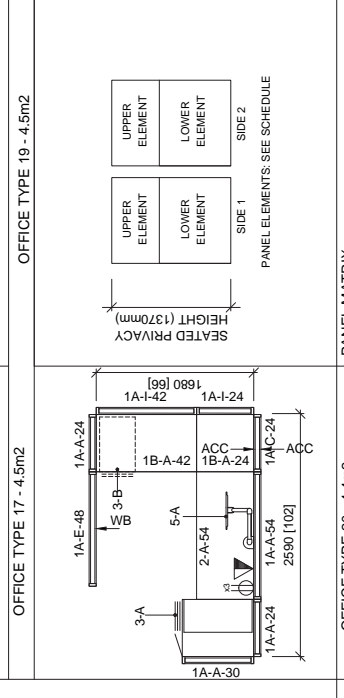
OFFICE TYPE 53 - 4.4m2



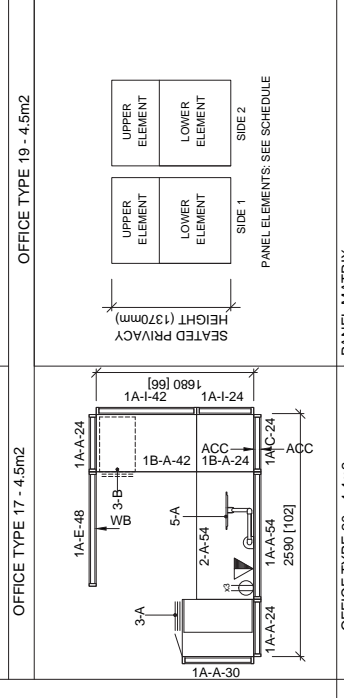
OFFICE TYPE 54 - 4.4m2



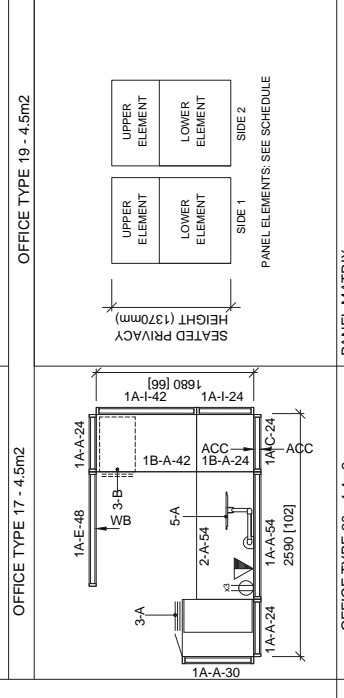
OFFICE TYPE 55 - 4.4m2



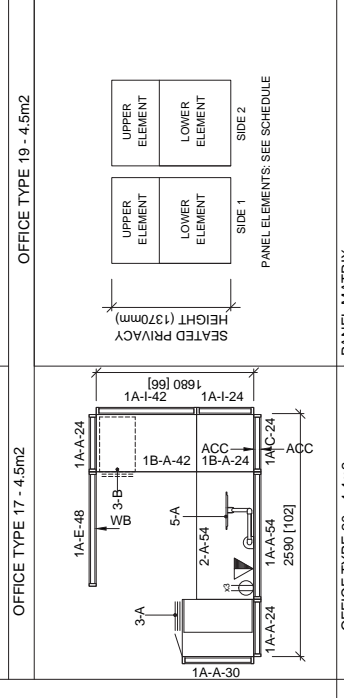
OFFICE TYPE 56 - 4.4m2



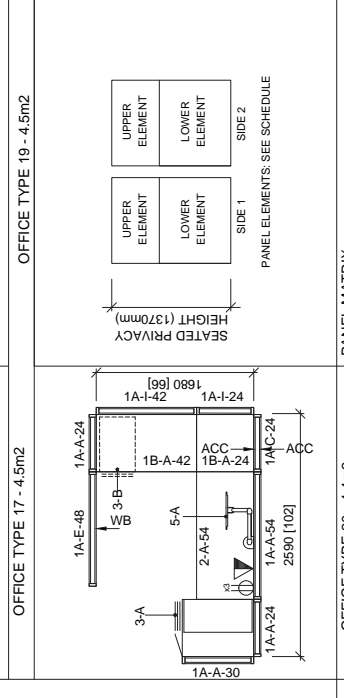
OFFICE TYPE 57 - 4.4m2



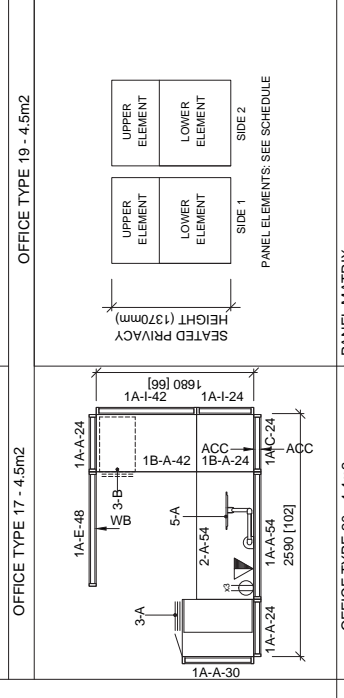
OFFICE TYPE 58 - 4.4m2



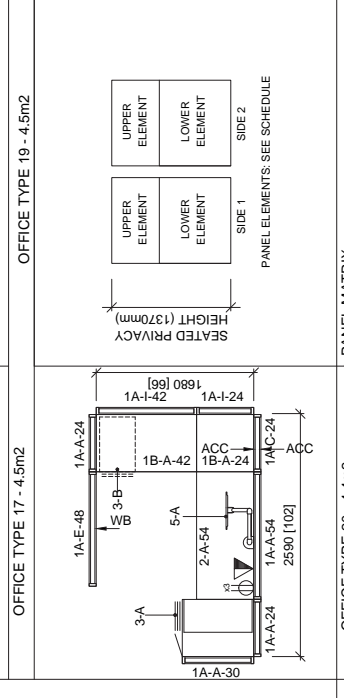
OFFICE TYPE 59 - 4.4m2



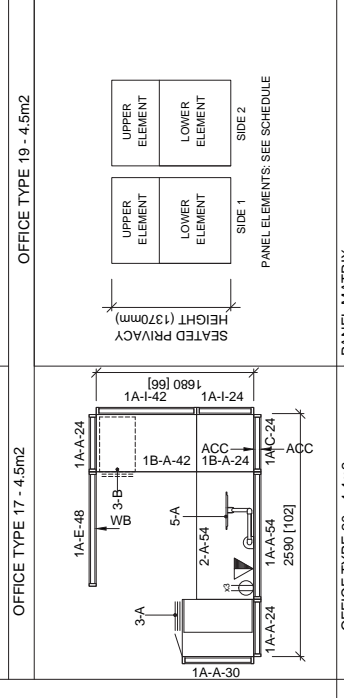
OFFICE TYPE 60 - 4.4m2



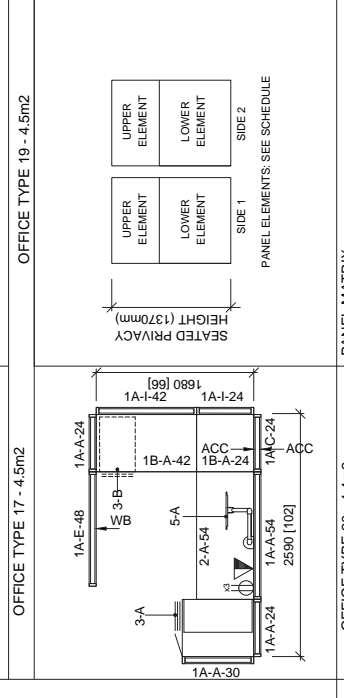
OFFICE TYPE 61 - 4.4m2



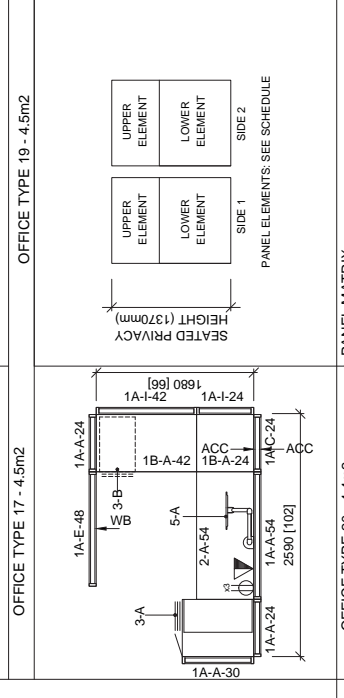
OFFICE TYPE 62 - 4.4m2



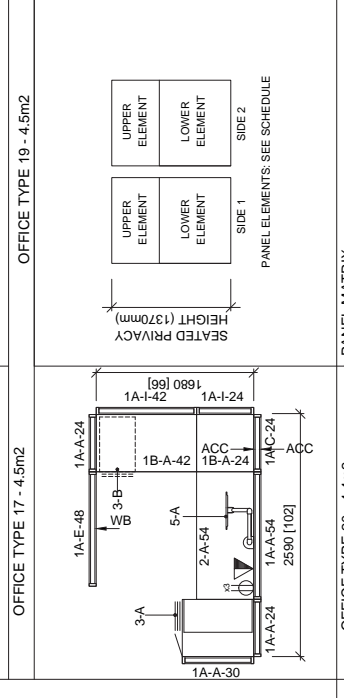
OFFICE TYPE 63 - 4.4m2



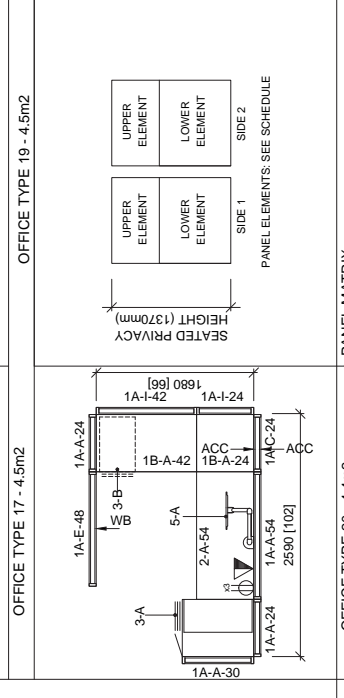
OFFICE TYPE 64 - 4.4m2



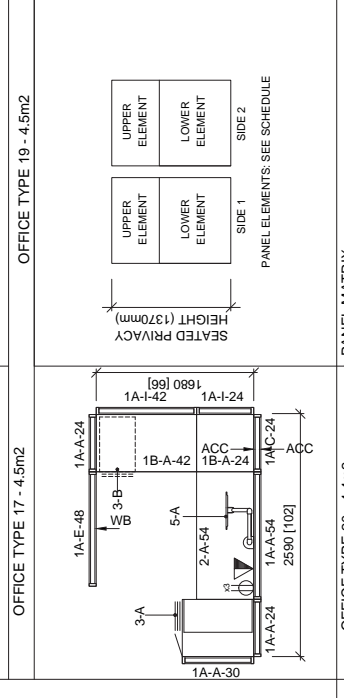
OFFICE TYPE 65 - 4.4m2



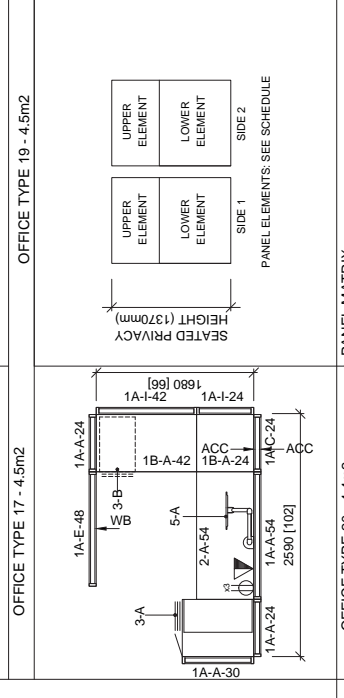
OFFICE TYPE 66 - 4.4m2



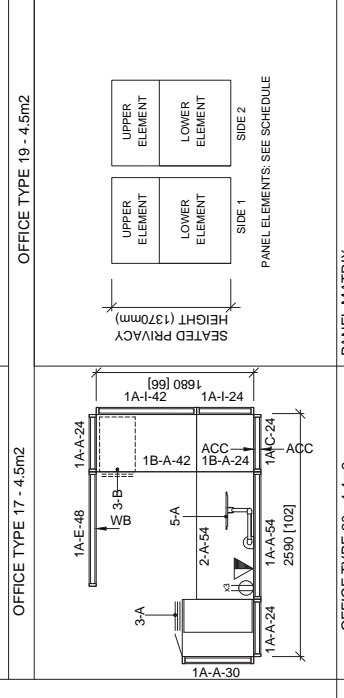
OFFICE TYPE 67 - 4.4m2



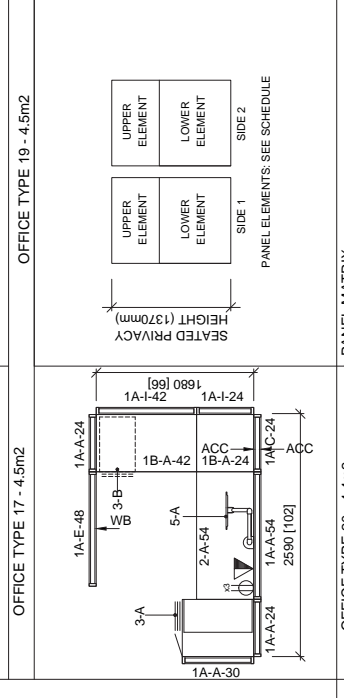
OFFICE TYPE 68 - 4.4m2



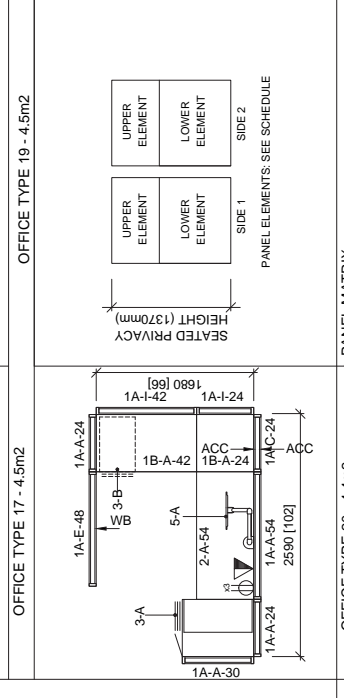
OFFICE TYPE 69 - 4.4m2



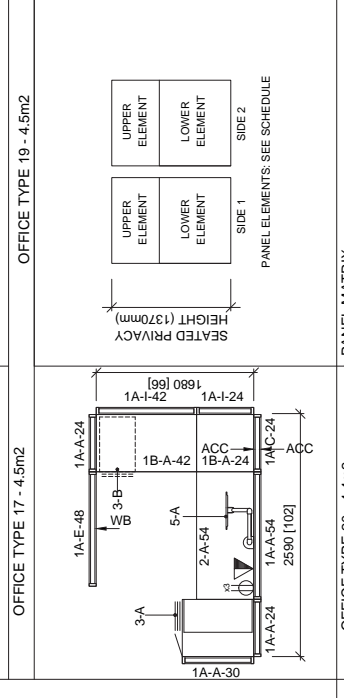
OFFICE TYPE 70 - 4.4m2



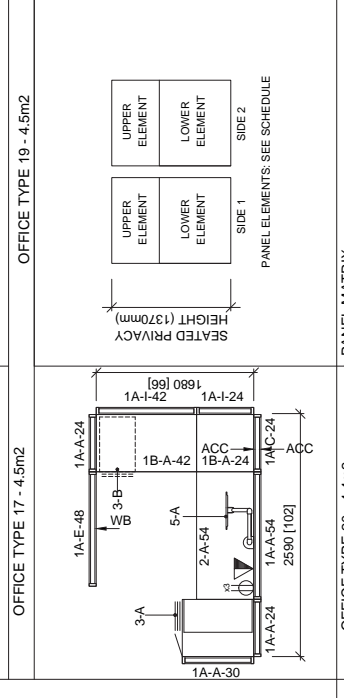
OFFICE TYPE 71 - 4.4m2



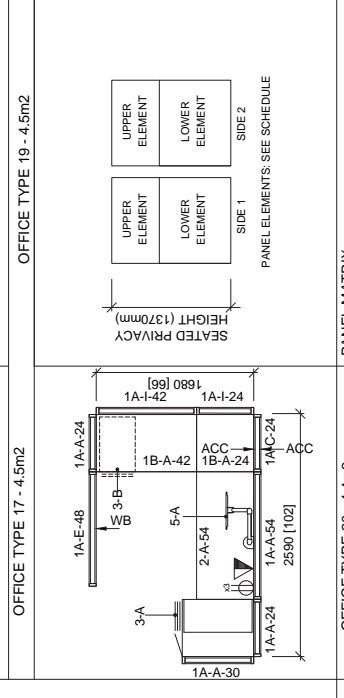
OFFICE TYPE 72 - 4.4m2



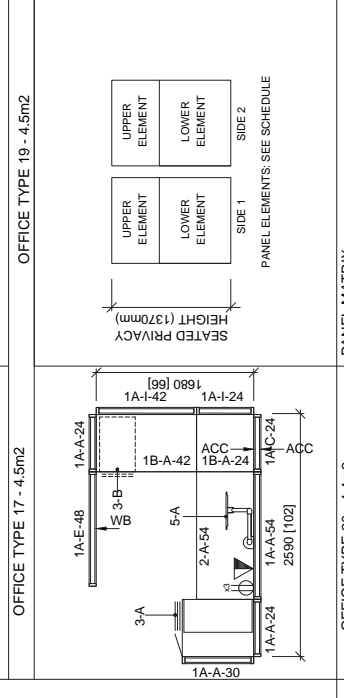
OFFICE TYPE 73 - 4.4m2



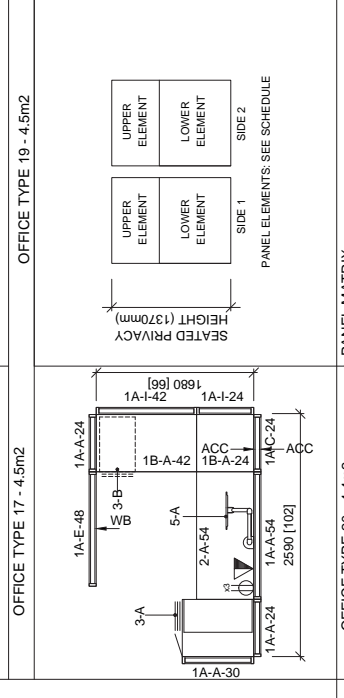
OFFICE TYPE 74 - 4.4m2



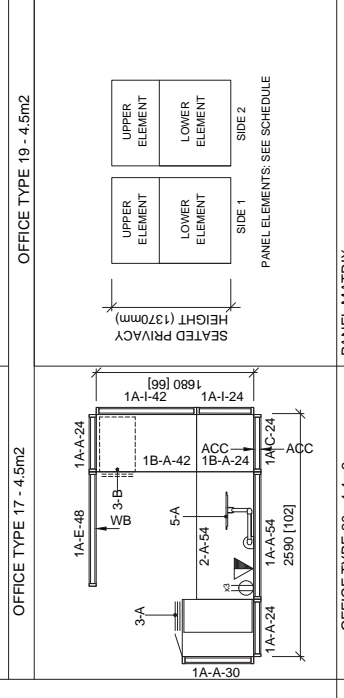
OFFICE TYPE 75 - 4.4m2



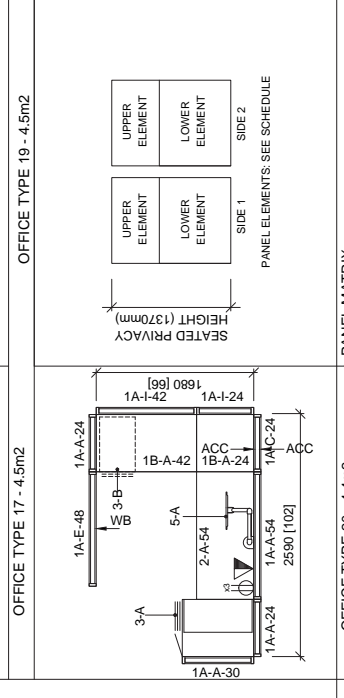
OFFICE TYPE 76 - 4.4m2



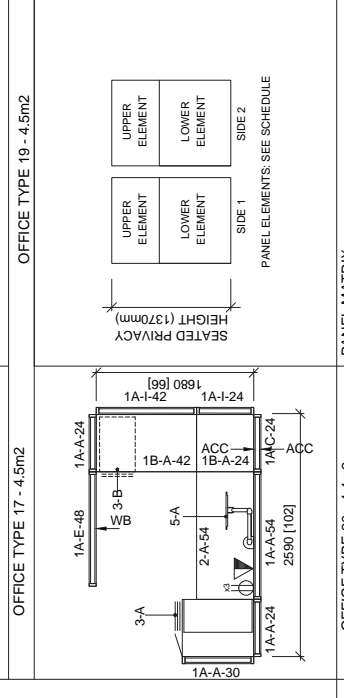
OFFICE TYPE 77 - 4.4m2



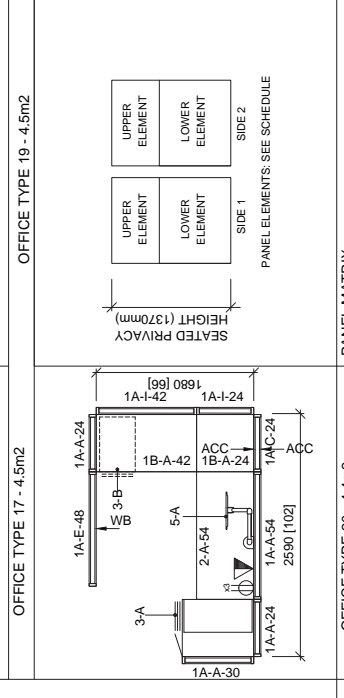
OFFICE TYPE 78 - 4.4m2



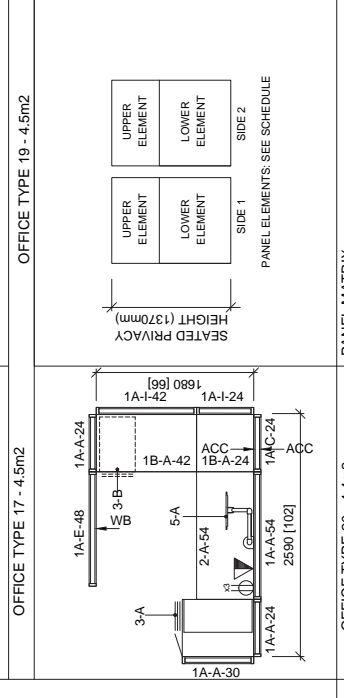
OFFICE TYPE 79 - 4.4m2



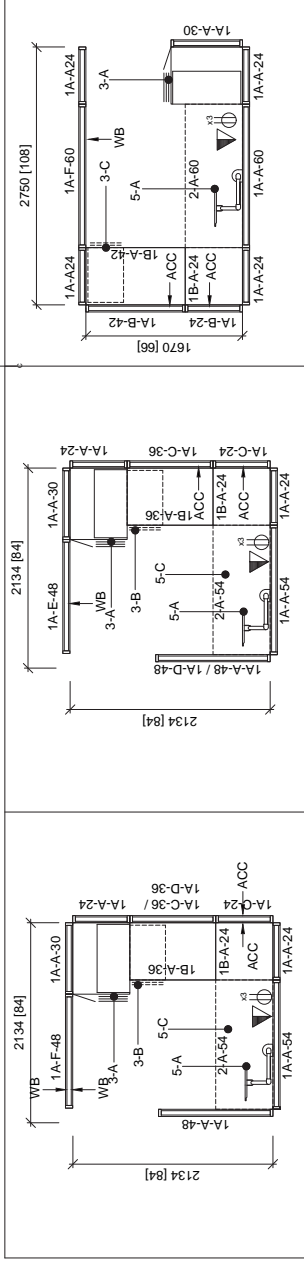
OFFICE TYPE 80 - 4.4m2



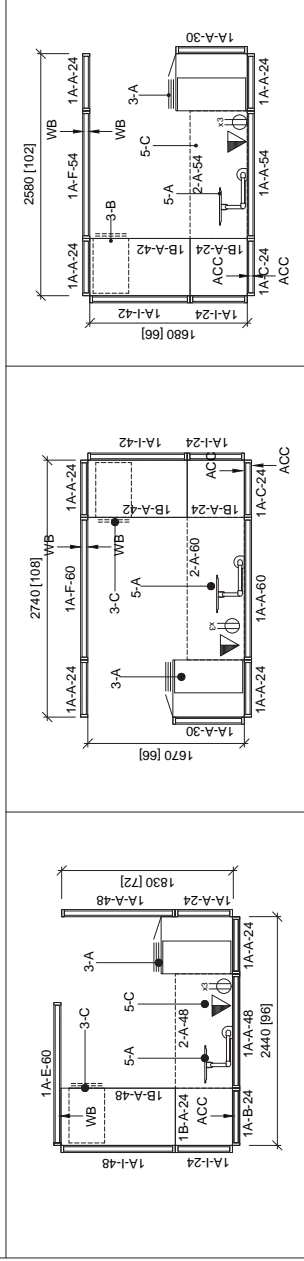
OFFICE TYPE 81 - 4.4m2



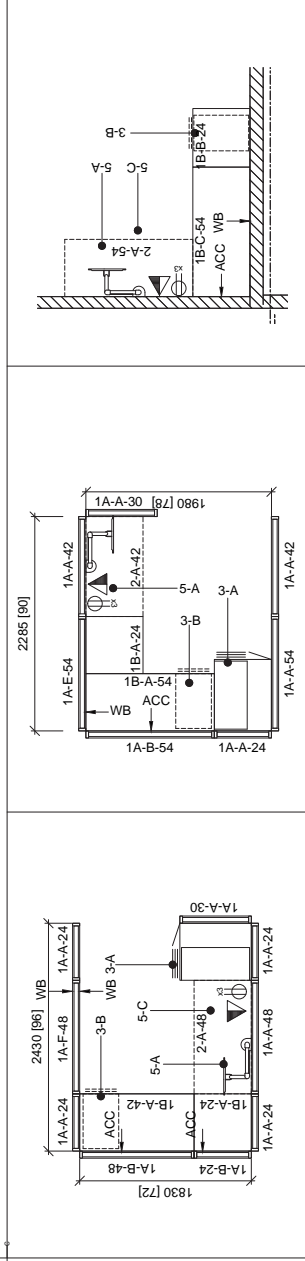
OFFICE TYPE 82 - 4.4m2



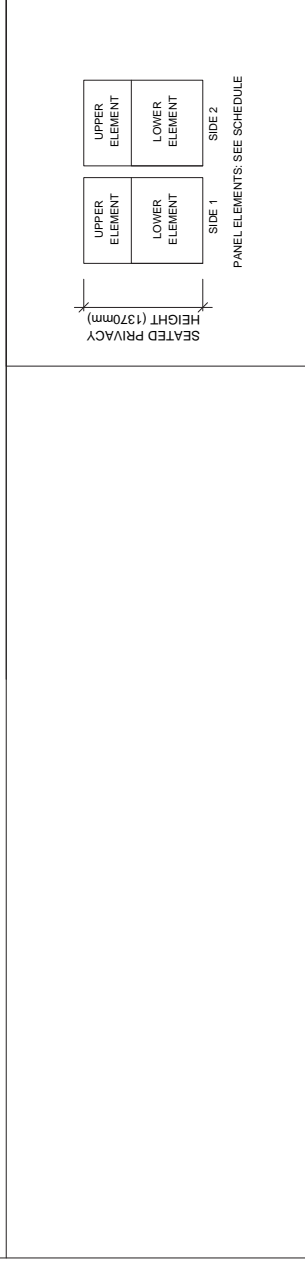
OFFICE TYPE 21 - 4.5m2



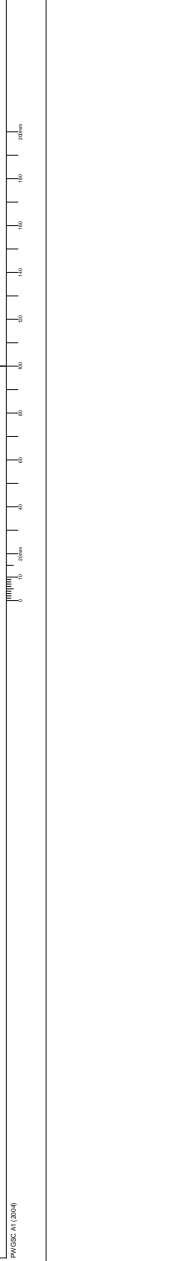
OFFICE TYPE 22 - 4.5m2



OFFICE TYPE 23 - 4.8m2



OFFICE TYPE 24 - 4.5m2



OFFICE TYPE 25 - 4.6m2

OFFICE TYPE 26 - 4.4m2

OFFICE TYPE 27 - 4.5m2

OFFICE TYPE 28 - 4.5m2

OFFICE TYPE 29

OFFICE TYPE 30

OFFICE TYPE 31

OFFICE TYPE 32

OFFICE TYPE 33

OFFICE TYPE 34

OFFICE TYPE 35

OFFICE TYPE 36

OFFICE TYPE 37

OFFICE TYPE 38

OFFICE TYPE 39

OFFICE TYPE 40

OFFICE TYPE 41

OFFICE TYPE 42

OFFICE TYPE 43

OFFICE TYPE 44

OFFICE TYPE 45

OFFICE TYPE 46

OFFICE TYPE 47

OFFICE TYPE 48

OFFICE TYPE 49

OFFICE TYPE 50

OFFICE TYPE 51

OFFICE TYPE 52

OFFICE TYPE 53

OFFICE TYPE 54

OFFICE TYPE 55

OFFICE TYPE 56

OFFICE TYPE 57

OFFICE TYPE 58

OFFICE TYPE 59

OFFICE TYPE 60

OFFICE TYPE 61

OFFICE TYPE 62

OFFICE TYPE 63

OFFICE TYPE 64

OFFICE TYPE 65

OFFICE TYPE 66

OFFICE TYPE 67

OFFICE TYPE 68

OFFICE TYPE 69

OFFICE TYPE 70