



RETURN BIDS TO:

RETOURNER LES SOUMISSIONS À:

**Bid Receiving Public Works and Government
Services Canada/Réception des soumissions Travaux
publics et Services gouvernementaux Canada**

1713 Bedford Row

Halifax, N.S./Halifax, (N.É.)

Halifax

Nova Scotia

B3J 1T3

Bid Fax: (902) 496-5016

**SOLICITATION AMENDMENT
MODIFICATION DE L'INVITATION**

The referenced document is hereby revised; unless otherwise indicated, all other terms and conditions of the Solicitation remain the same.

Ce document est par la présente révisé; sauf indication contraire, les modalités de l'invitation demeurent les mêmes.

Comments - Commentaires

Vendor/Firm Name and Address

**Raison sociale et adresse du
fournisseur/de l'entrepreneur**

Issuing Office - Bureau de distribution

**Atlantic Region Acquisitions/Région de l'Atlantique
Acquisitions**

1713 Bedford Row

Halifax, N.S./Halifax, (N.É.)

Halifax

Nova Scot

B3J 1T3

Title - Sujet TC - Furniture Request NFLD	
Solicitation No. - N° de l'invitation EC096-200866/A	Amendment No. - N° modif. 003
Client Reference No. - N° de référence du client EC096-20-0866	Date 2019-08-20
GETS Reference No. - N° de référence de SEAG PW-\$HAL-219-10755	
File No. - N° de dossier HAL-9-83072 (219)	CCC No./N° CCC - FMS No./N° VME
Solicitation Closes - L'invitation prend fin at - à 02:00 PM on - le 2019-08-29	Time Zone Fuseau horaire Atlantic Daylight Saving Time ADT
F.O.B. - F.A.B. Plant-Usine: <input type="checkbox"/> Destination: <input checked="" type="checkbox"/> Other-Autre: <input type="checkbox"/>	
Address Enquiries to: - Adresser toutes questions à: Richard, Linda K.	Buyer Id - Id de l'acheteur hal219
Telephone No. - N° de téléphone (902) 402-9059 ()	FAX No. - N° de FAX (902) 496-5016
Destination - of Goods, Services, and Construction: Destination - des biens, services et construction:	

Instructions: See Herein

Instructions: Voir aux présentes

Delivery Required - Livraison exigée	Delivery Offered - Livraison proposée
Vendor/Firm Name and Address Raison sociale et adresse du fournisseur/de l'entrepreneur	
Telephone No. - N° de téléphone Facsimile No. - N° de télécopieur	
Name and title of person authorized to sign on behalf of Vendor/Firm (type or print) Nom et titre de la personne autorisée à signer au nom du fournisseur/ de l'entrepreneur (taper ou écrire en caractères d'imprimerie)	
Signature	Date

EC096-200866
MODIFICATION 3

Cet amendement est publié en réponse à la suivante:

1. Sous date de clôture

Supprimer: 26 août 2019 2:00 p.m. HEA

Insérer: 29 août 2019 2:00 p.m. HEA

2. En réponse aux questions suivantes

Question 1:

Concernant le point 1 de la CAT 1B. GoCUID concerne les frais généraux vers le haut et la description concerne Hutch. Etant donné que la demande concerne les portes battantes, cet élément doit être non-SA pour obtenir une tarification juste et précise, ou à tout le moins un GoCUID plus approprié, tel qu'un clapet à une seule porte coulissante plutôt qu'une porte, si l'AC accepterait 1bHHCLO12L60XSLXXKX GoCUID disponible.

Réponse 1:

Veuillez remplacer pour **1bHHCLS15L60XFTXXKX**.

Question 2:

Article 1 de la CAT 1B. Un hutch à 12 "D, bien que sur le SA, n'est pas l'option la plus stable sur des longueurs étendues, sauf si elle est montée sur un mur, en particulier si elle est surchargée par le haut. L'AC accepterait-elle l'unité 15 il offre plus de stabilité?

Réponse 2:

Conformément à la réponse à la question 1, veuillez remplacer pour **1bHHCLS15L60XFTXXKX**.

Question 3:

Re NSA Item 2 L Forme Surface ajustable en hauteur. Pouvez-vous s'il vous plaît fournir un dessin du bureau 18 pour mieux comprendre le dimensionnement et l'application de ce composant

Réponse 3:

Voir Annexe C, page F4.

Question 4:

Re NSA Item indique (30hx24wx24d) cependant, le piédestal lui-même mesure 15 "W + un C-leg? Merci d'envoyer le dessin pour une meilleure compréhension de l'application.

Réponse 4:

Voir ci-dessous.



3. À l'annexe A - Besoin et base de paiement - Catégorie 1B

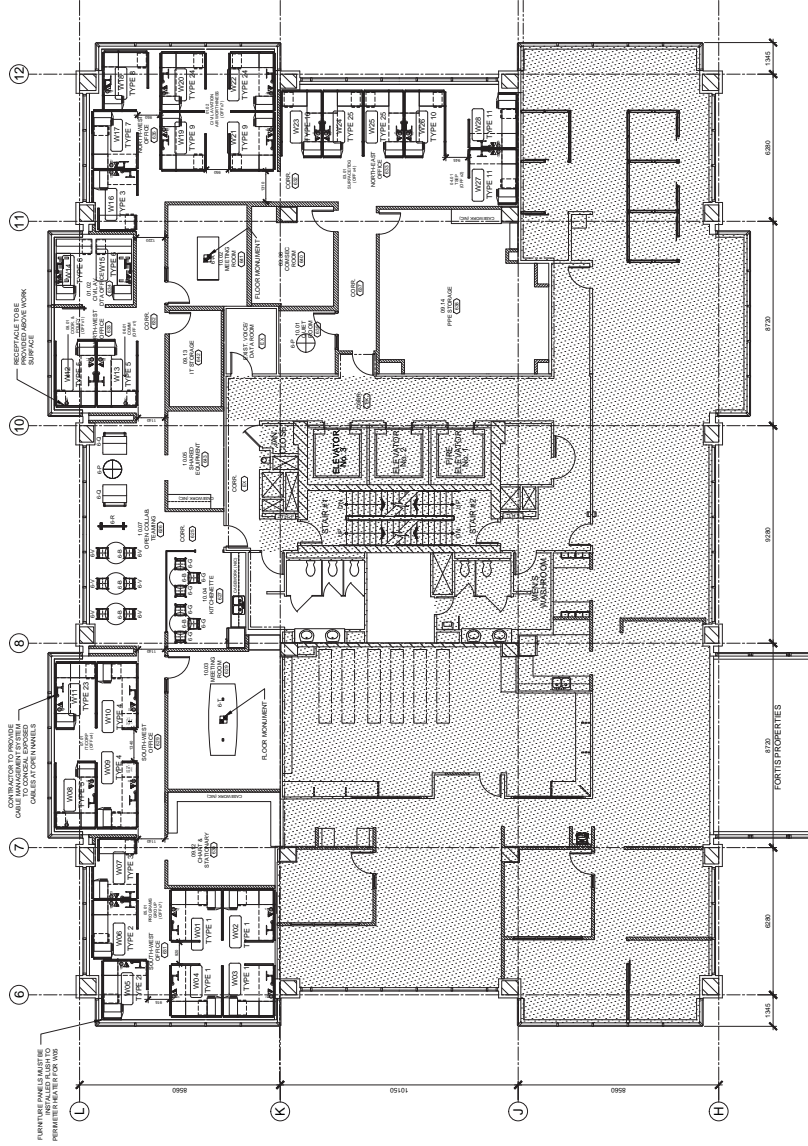
Supprimer: le tableau précédent pour la catégorie 1B

Insérer: ce qui suit (changement de produit en gras et en italique)

Catégorie 1b						
1	1bFFHREN24L 36WNOLNY	Surface de travail supporté (36x24)	17		\$	
2	1bFFHREN24L 42WNOLNY	Surface de travail supporté (42x24)	39			
3	1bFFHREN24L 48WNOLNY	Surface de travail supporté (48x24)	18			
4	1bFFHREN24L 54WNOLNY	Surface de travail supporté (54x24)	4			
5	1bFFHREN24L 60WNOLNY	Surface de travail supporté (60x24)	2			
6	1bFFHREG24L 60WNOLNY	Surface de travail 2 supports plein bord (30hx60wx24d) **No Grommet (office Type 6)	2			
7	1bFFHREG24L 54WNOLNY	Surface de travail 2 supports plein bord (30h54wx24d) **No Grommet (office 18)	1			
8	1bHHCLS15L6 0XFTXXX	Rangement en hauteur 60" wide Portes (office Type 6)	2			
9	1bFFHREW30L 48WNOLNY	Surface de travail 1 demi/ 1 support plein bord (30hx48wx30d) **No Grommet (office type 18)	1			
10	1bSPSOLGL24 3054XKXX	Tourelle personnelle-Pendrie d'un côté, deux classeurs à la base et étagère ouvertes supérieur. 1372mm (54 in.) high. 24x30 –Droitier, Laminé (office 6 and 18)	3			
11	1bSPSOLGA24 3054XKXX	Tourelle personnelle-Pendrie d'un côté, deux classeurs à la base et étagère ouvertes supérieur. 1372mm (54 in.) high. 24x30 (38 droitier et 42 gaucher)	80			

12	1bSPBMCAL15 24XXYKXX	B/F caisson sur roulettes avec un siège, 24" de profond-Laminé (office 6)	2		
13	1bSBBSLGL15 24XXNKXX	B/B/F caisson, 24" de profond-Laminé. Pour supporter Non-AMA item 3 (Office 18)	1		
14	1bSPBMCAA15 24XXYKXX	B/F caisson sur roulettes avec un siège, 24" de profond.	47		
15	1bSBBSLGA15 24XXNKXX	B/B/F caisson pour supporter une surface de travail 610mm (24 in.)	35		
16	Composant pour rail d'accessoire	Tablette pour téléphone	15		
17	Composant pour rail d'accessoire	Bac a cartable	80		
18	Composant pour rail d'accessoire	Rangement pour papier-Horizontal	120		
19	Composant pour rail d'accessoire	Rangement pour papier-Vertical	80		

Tous les autres termes et conditions demeurent inchangées.



LEVEL 6 NEW FURNITURE PLAN


$$\left(\frac{1}{E1} \right)$$

DRAWING LEGEND:

KEYBOARD TRAYS TO BE PROVIDED FOR ALL OFFICES EXCLUDING THE FOLLOWING:

OFFICE TYPE IDENTIFIER	OFFICE #	OFFICE TYPE	CATEGORY TYPE IDENTIFIER
W08	W01	TYPE 1	1A-A-##
W36			
W09			
W39			
W45			

DATA OUTLET,
COORDINATE WITH
ELECTRICAL

POWER OUTLET WITH 3 DBL.
RECEPTACLES FOR EACH WKMS
COORDINATE WITH ELECTRICAL

DRAWING NOTES:

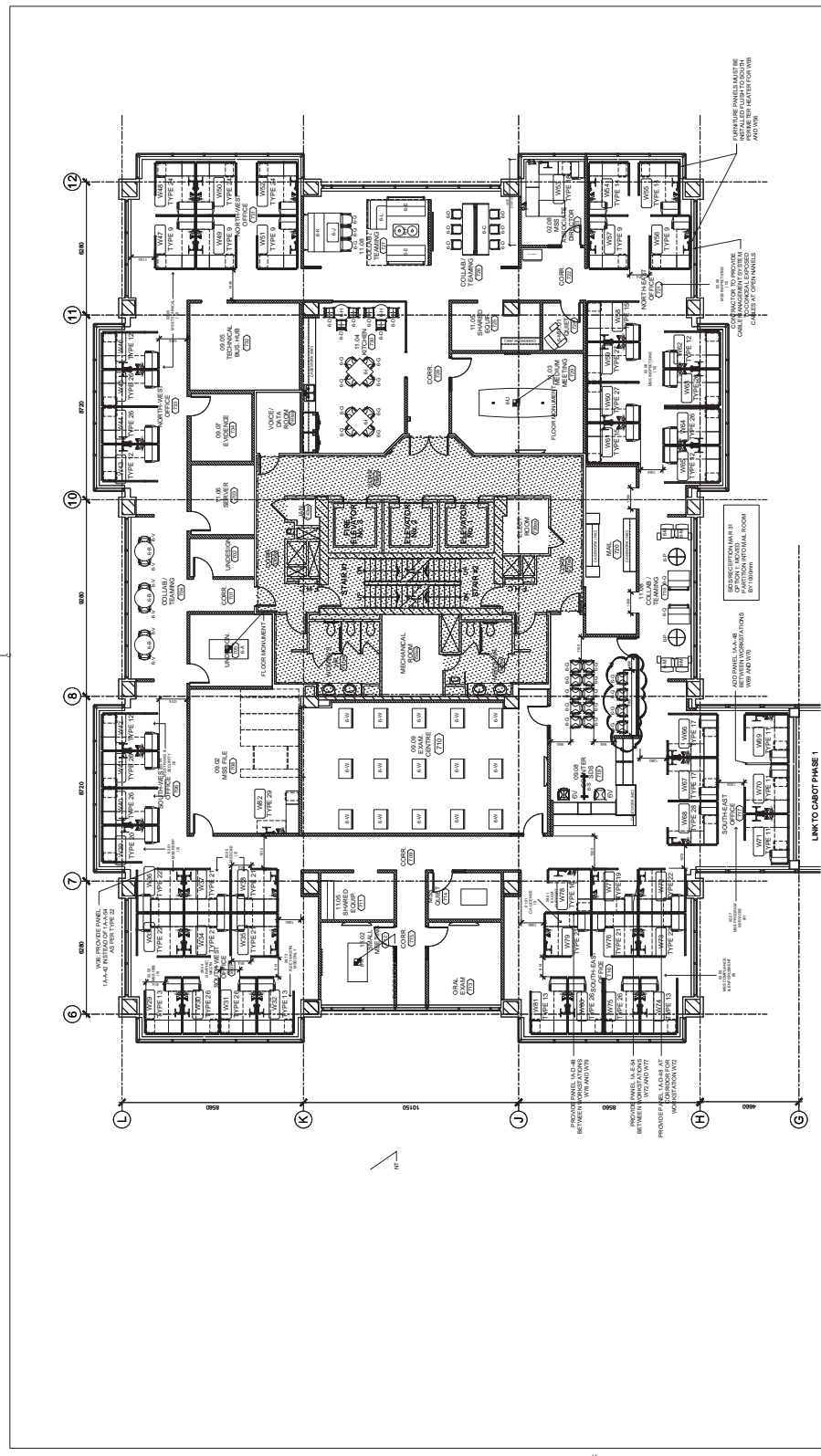
1. RIGHT HAND / LEFT HAND INSTALLATION AS, SEE PLAN.
2. ORIENTATION AS SHOWN ON PLAN.
3. WHERE MORE THAN ONE PANEL TYPE INDICATED, SEE PLAN.
4. CONTRACTOR TO CONFIRM ALL QUANTITIES.
5. ALL FURNITURE PANELS TO BE INSTALLED 4" CLEAR OF PERIMETER HEATERS UNLESS OTHERWISE NOTED ON DRAWING.

ENDNOTES

REVISION	DESCRIPTION	DATE
2	REVISION 01	JAN 2019
0	ISSUED FOR TENDER	JAN 2019

TRANSPORT CANADA
JOHN CABOT BUILDING
TENANT FIT-UP
ST. JOHN'S, NL

Project Manager	T. BIRMINGHAM
Design	JULY 2018
Drawn	C. BIRD
Reviewed	JULY 2018
Approved	
Author	
Project Number	GOC914852
Project Name	ANNEX C - F2



LEVEL 7 FURNITURE PLAN

SCALE: 1:100

DRAWING LEGEND:

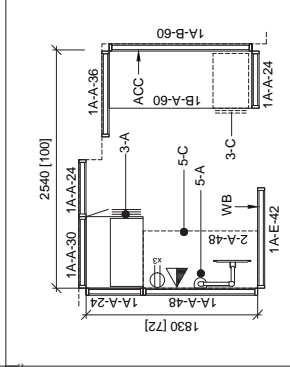
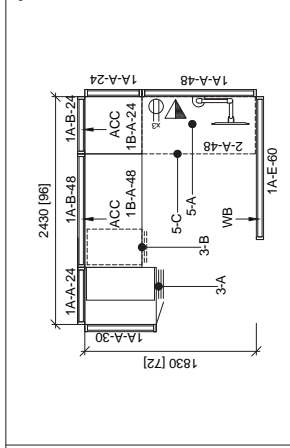
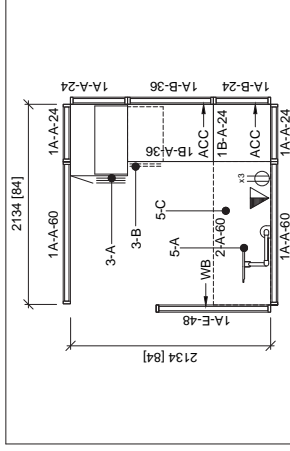
- ROOM NAME AND #
- OFFICE TYPE IDENTIFIER
- CATEGORY TYPE IDENTIFIER (CAT TYPE LENGTH INCHES)
- DATA OUTLET
- COORDINATE WITH ELECTRICAL
- POWER OUTLET WITH 2.0M COORDINATE WITH ELECTRICAL

DRAWING NOTES:

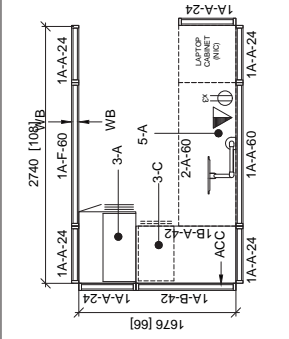
- RIGHT HAND / LEFT HAND INSTALLATION AS SEE PLAN.
- CONTRACTOR TO CONFIRM ALL QUANTITIES.
- ALL FURNITURE PANELS TO BE INSTALLED 4" CLEAR OF PERIMETER HEATERS UNLESS OTHERWISE NOTED ON DRAWING.

KEYBOARD TRAYS:
KEYBOARD TRAYS TO BE PROVIDED FOR ALL OFFICES EXCLUDING THE FOLLOWING:

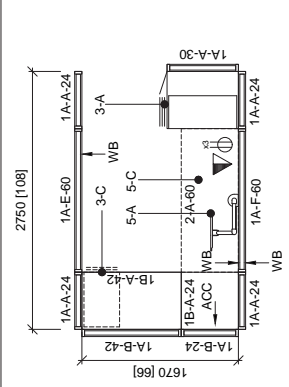
- W08
- W09
- W10
- W11
- W12
- W13
- W14
- W15
- W16
- W17
- W18
- W19
- W20
- W21
- W22
- W23
- W24
- W25
- W26
- W27
- W28
- W29
- W30
- W31
- W32



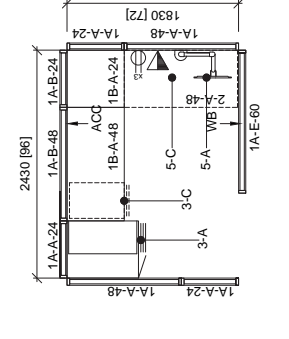
OFFICE TYPE 1 - 4.5m2



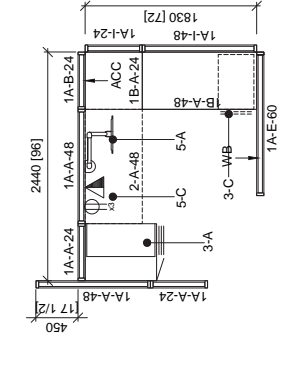
OFFICE TYPE 2 - 4.8m2



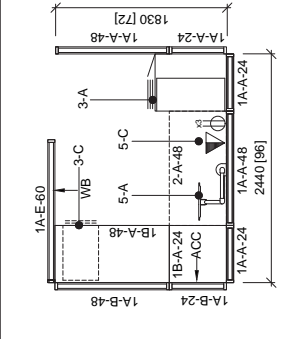
OFFICE TYPE 4 - 4.6m2



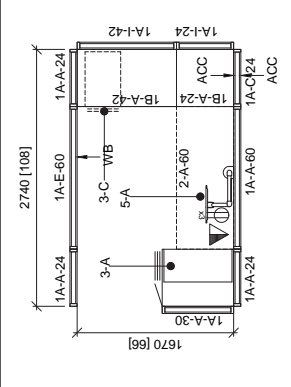
OFFICE TYPE 5 - 4.6m2



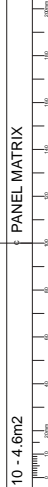
OFFICE TYPE 7 - 4.5m2



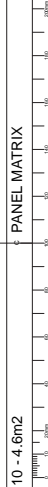
OFFICE TYPE 8 - 4.5m2



OFFICE TYPE 9 - 4.5m2



OFFICE TYPE 10 - 4.6m2

[illegible]

CATEGORY		THROUGH	THROUGH
CATEGORY 3: ADJUSTABLE DESK			
TAG	DESCRIPTION	TAG	DESCRIPTION
2-A	SET 2ND DESK	3-C	BIT STANDS/TABLE
2-B	BIT 2ND DESK, MOBILE PANEL		
CATEGORY 3: METAL FILING AND STORAGE			
TAG	DESCRIPTION	TAG	DESCRIPTION
3-A	STORAGE TOWER	3-D	WORK SURFACE SUPPORTING PRE-DIAL
3-B	MOBILE PRE-DIAL		
		3-C	FIXED PRE-DIAL

CATEGORY 5 ANCILLARY & LIGHTING PRODUCTS	
TAG	DESCRIPTION
5-A	SINGLE MONITOR ARM
5-B	DUAL MONITOR ARM

NEEDWARD TRAY	
CATEGORY 6 COLLABORATIVE FURNITURE	
TAG	DESCRIPTION
6-A	CONFERENCE TABLE (16x72)
6-B	MEETING TABLE (ROUND 36")
6-C	MEETING TABLE (ROUND 36")

6-C	MEETING TABLE (BAR HEIGHT)	6-P	SIDE TABLE (ROUND 30")
6-D	BAR STOOL	6-Q	GANGING BANQUET SEATING
6-E	GANGING BANQUETTE SEATING 700mm x 1800mm	6-R	LOUNGE SCREEN (WHITEBOARD)
6-F	COFFEE TABLE	6-S	LOUNGE SCREEN (PABRIQ)

6-G	KITCHENETTE CHAIR	6-T	CONFERENCE TABLE (48 x 120)
6-H	KITCHENETTE BAR HEIGHT TABLE	6-U	CONFERENCE TABLE (64 x 144)
6-I	KITCHENETTE TABLE (30 x 30)	6-V	CASUAL CHAIR W/STOCKS
6-J	COLLABORATIVE TABLE	6-W	EXAM DESKS W/SCREENS

6-K	GANGING BANQUETTE SEATING		
6-L	GANGING BANQUETTE SEATING Rooms 4 & 5 (over)		
6-M	QUIET ROOM LOUNGE Q-AR		

SIGNATURE SCHEDULE			

DRAWING LEGEND:

W01	—	OFFICE #	ROOM NAME AND #
W02	—	OFFICE #	OFFICE TYPE IDENTIFIER

1A-A-#

13	POWER OUTLET WITH 3 DBL. RECEPTACLES FOR EACH WKSTN. COORDINATE WITH ELECTRICAL
14	UPHOLSTERED PANEL ACCESSORY RAIL
15	WHITE BOARD
16	CLEAR GLAZING

DRAWING NOTES:

1. RIGHT HAND / LEFT HAND INSTALLATION AS, SEE PLAN.
2. ORIENTATION AS SHOWN ON PLAN.
3. CONTRACTOR TO CONFIRM ALL QUANTITIES.

NOTES / LEGEND



Public Works and
Government Services
Canada



BGIS

TECHNICAL ELECTRICAL CONSULTANTS

CECL **CSCL LIMITED**
Consulting Engineers

ARCHITECT:

Suite 201
Caledonia Place
40 Cuda Vidi Road
St. Johns, NL
A1A 1C1

Tel: 709.738.4422
Fax: 709.738.4455



© C.A. #17-600-12

Xref M's Revisions to Project
 JAN. 31/19

10

2	REVISION 01	June 27 2019	project
1	ISSUED FOR TENDER	June 06 2019	project
revisions		date	project

TRANSPORT CANADA
JOHN CABOT BUILDING
TENANT FIT-UP
ST. JOHN'S, NL

OFFICE TYPES / 45

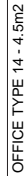
OFFICE FILES?
FURNITURE SCHEDULE

date	JULY 2018	desired
drawn	C. BAIRD	
date	JULY 2018	approved
date		Signature
enter		

PWCSG Project Manager	Administrative/Project Title/SGC
project number	no. du projet
GOC914852	
drawing no.	no. du dessin
ANNEY C - E3	

ANINEX C-13

E-ORAWDDE

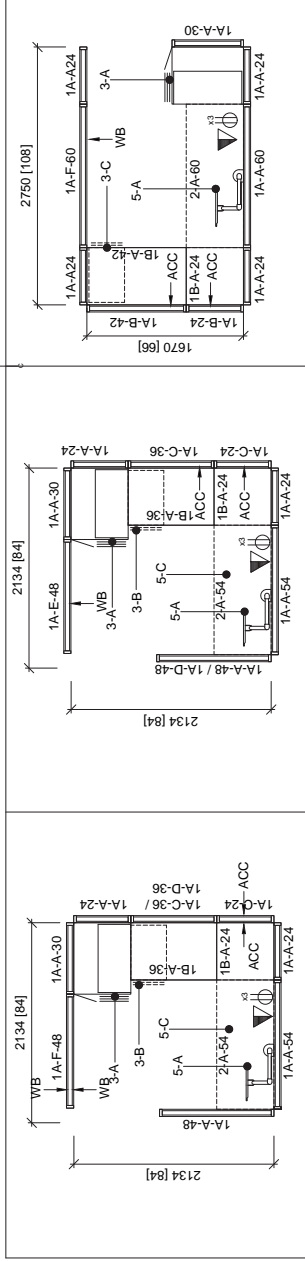
[illegible]

OTES / LEGEND

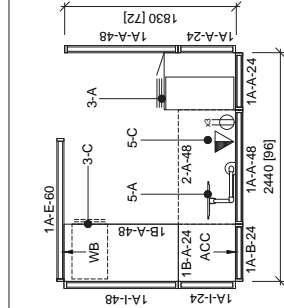
JAN. 31/19
ARAT M. RAWSON'S TO PROJECT

JOHN CABOT BUILDING
TENANT FIT-UP

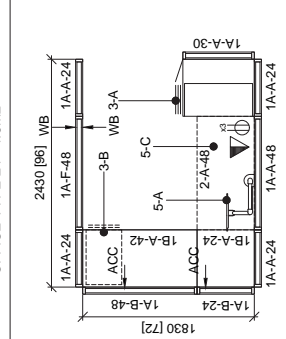
FORM CODE



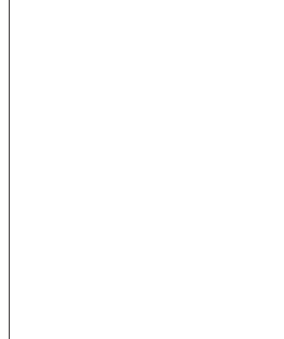
OFFICE TYPE 21 - 4.5m2



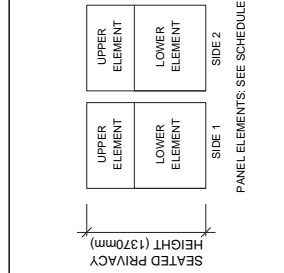
OFFICE TYPE 24 - 4.5m2



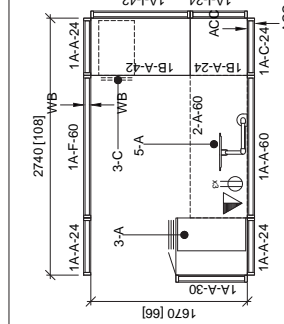
OFFICE TYPE 27 - 4.5m2



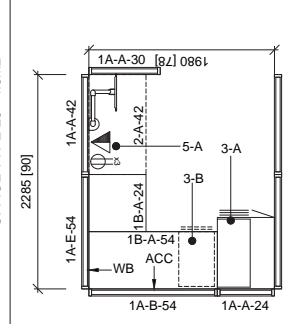
OFFICE TYPE 29



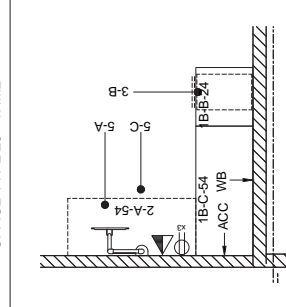
OFFICE TYPE 22 - 4.5m2



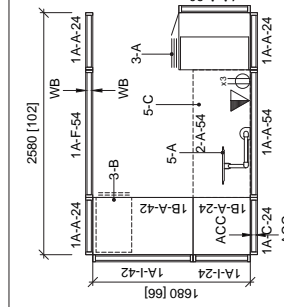
OFFICE TYPE 25 - 4.6m2



OFFICE TYPE 26 - 4.4m2



OFFICE TYPE 23 - 4.8m2



CATEGORY 1A FURNITURE PANELS			
TAG	DESCRIPTION	SIDE 1 TYPE	SIDE 2 TYPE
1A-A	SEATED PRIVACY HEIGHT ADD ON	1A-A	FABRIC
1A-B	SEATED PRIVACY HEIGHT ADD ON	1A-B	FABRIC
1A-C	SEATED PRIVACY HEIGHT ADD ON	1A-C	FABRIC
1A-D	SEATED PRIVACY HEIGHT ADD ON	1A-D	FABRIC
1A-E	SEATED PRIVACY HEIGHT ADD ON	1A-E	FABRIC
1A-F	SEATED PRIVACY HEIGHT ADD ON	1A-F	FABRIC
1A-G	SEATED PRIVACY HEIGHT ADD ON	1A-G	FABRIC
1A-H	SEATED PRIVACY HEIGHT ADD ON	1A-H	FABRIC
1A-I	SEATED PRIVACY HEIGHT ADD ON	1A-I	FABRIC
1A-J	SEATED PRIVACY HEIGHT ADD ON	1A-J	FABRIC
1A-K	SEATED PRIVACY HEIGHT ADD ON	1A-K	FABRIC
1A-L	SEATED PRIVACY HEIGHT ADD ON	1A-L	FABRIC
1A-M	SEATED PRIVACY HEIGHT ADD ON	1A-M	FABRIC
1A-N	SEATED PRIVACY HEIGHT ADD ON	1A-N	FABRIC
1A-O	SEATED PRIVACY HEIGHT ADD ON	1A-O	FABRIC
1A-P	SEATED PRIVACY HEIGHT ADD ON	1A-P	FABRIC
1A-Q	SEATED PRIVACY HEIGHT ADD ON	1A-Q	FABRIC
1A-R	SEATED PRIVACY HEIGHT ADD ON	1A-R	FABRIC
1A-S	SEATED PRIVACY HEIGHT ADD ON	1A-S	FABRIC
1A-T	SEATED PRIVACY HEIGHT ADD ON	1A-T	FABRIC
1A-U	SEATED PRIVACY HEIGHT ADD ON	1A-U	FABRIC
1A-V	SEATED PRIVACY HEIGHT ADD ON	1A-V	FABRIC
1A-W	SEATED PRIVACY HEIGHT ADD ON	1A-W	FABRIC
1A-X	SEATED PRIVACY HEIGHT ADD ON	1A-X	FABRIC
1A-Y	SEATED PRIVACY HEIGHT ADD ON	1A-Y	FABRIC
1A-Z	SEATED PRIVACY HEIGHT ADD ON	1A-Z	FABRIC

CATEGORY 1B PRESTANDING SYSTEMS			
TAG	DESCRIPTION	TAG	DESCRIPTION
1B-A	PRESTANDING SYSTEM	1B-B	PRESTANDING SYSTEM
1B-C	PRESTANDING SYSTEM	1B-D	PRESTANDING SYSTEM
1B-E	PRESTANDING SYSTEM	1B-F	PRESTANDING SYSTEM
1B-G	PRESTANDING SYSTEM	1B-H	PRESTANDING SYSTEM
1B-I	PRESTANDING SYSTEM	1B-J	PRESTANDING SYSTEM
1B-K	PRESTANDING SYSTEM	1B-L	PRESTANDING SYSTEM
1B-M	PRESTANDING SYSTEM	1B-N	PRESTANDING SYSTEM
1B-O	PRESTANDING SYSTEM	1B-P	PRESTANDING SYSTEM
1B-Q	PRESTANDING SYSTEM	1B-R	PRESTANDING SYSTEM
1B-S	PRESTANDING SYSTEM	1B-T	PRESTANDING SYSTEM
1B-U	PRESTANDING SYSTEM	1B-V	PRESTANDING SYSTEM
1B-W	PRESTANDING SYSTEM	1B-X	PRESTANDING SYSTEM
1B-Y	PRESTANDING SYSTEM	1B-Z	PRESTANDING SYSTEM

CATEGORY 2 HEIGHT ADJUSTABLE DESK			
TAG	DESCRIPTION	TAG	DESCRIPTION
2-A	HEIGHT ADJUSTABLE DESK	2-B	HEIGHT ADJUSTABLE DESK
2-C	HEIGHT ADJUSTABLE DESK	2-D	HEIGHT ADJUSTABLE DESK
2-E	HEIGHT ADJUSTABLE DESK	2-F	HEIGHT ADJUSTABLE DESK
2-G	HEIGHT ADJUSTABLE DESK	2-H	HEIGHT ADJUSTABLE DESK
2-I	HEIGHT ADJUSTABLE DESK	2-J	HEIGHT ADJUSTABLE DESK
2-K	HEIGHT ADJUSTABLE DESK	2-L	HEIGHT ADJUSTABLE DESK
2-M	HEIGHT ADJUSTABLE DESK	2-N	HEIGHT ADJUSTABLE DESK
2-O	HEIGHT ADJUSTABLE DESK	2-P	HEIGHT ADJUSTABLE DESK
2-Q	HEIGHT ADJUSTABLE DESK	2-R	HEIGHT ADJUSTABLE DESK
2-S	HEIGHT ADJUSTABLE DESK	2-T	HEIGHT ADJUSTABLE DESK
2-U	HEIGHT ADJUSTABLE DESK	2-V	HEIGHT ADJUSTABLE DESK
2-W	HEIGHT ADJUSTABLE DESK	2-X	HEIGHT ADJUSTABLE DESK
2-Y	HEIGHT ADJUSTABLE DESK	2-Z	HEIGHT ADJUSTABLE DESK

CATEGORY 3 METAL FILING AND STORAGE			
TAG	DESCRIPTION	TAG	DESCRIPTION
3-A	METAL FILING CABINET	3-B	METAL FILING CABINET
3-C	METAL FILING CABINET	3-D	METAL FILING CABINET
3-E	METAL FILING CABINET	3-F	METAL FILING CABINET
3-G	METAL FILING CABINET	3-H	METAL FILING CABINET
3-I	METAL FILING CABINET	3-J	METAL FILING CABINET
3-K	METAL FILING CABINET	3-L	METAL FILING CABINET
3-M	METAL FILING CABINET	3-N	METAL FILING CABINET
3-O	METAL FILING CABINET	3-P	METAL FILING CABINET
3-Q	METAL FILING CABINET	3-R	METAL FILING CABINET
3-S	METAL FILING CABINET	3-T	METAL FILING CABINET
3-U	METAL FILING CABINET	3-V	METAL FILING CABINET
3-W	METAL FILING CABINET	3-X	METAL FILING CABINET
3-Y	METAL FILING CABINET	3-Z	METAL FILING CABINET

CATEGORY 4 COLLABORATIVE FURNITURE			
TAG	DESCRIPTION	TAG	DESCRIPTION
4-A	COLLABORATIVE TABLE	4-B	COLLABORATIVE TABLE
4-C	COLLABORATIVE TABLE	4-D	COLLABORATIVE TABLE
4-E	COLLABORATIVE TABLE	4-F	COLLABORATIVE TABLE
4-G	COLLABORATIVE TABLE	4-H	COLLABORATIVE TABLE
4-I	COLLABORATIVE TABLE	4-J	COLLABORATIVE TABLE
4-K	COLLABORATIVE TABLE	4-L	COLLABORATIVE TABLE
4-M	COLLABORATIVE TABLE	4-N	COLLABORATIVE TABLE
4-O	COLLABORATIVE TABLE	4-P	COLLABORATIVE TABLE
4-Q	COLLABORATIVE TABLE	4-R	COLLABORATIVE TABLE
4-S	COLLABORATIVE TABLE	4-T	COLLABORATIVE TABLE
4-U	COLLABORATIVE TABLE	4-V	COLLABORATIVE TABLE
4-W	COLLABORATIVE TABLE	4-X	COLLABORATIVE TABLE
4-Y	COLLABORATIVE TABLE	4-Z	COLLABORATIVE TABLE

CATEGORY 5 ANCILLARY & LIGHTING PRODUCTS			
TAG	DESCRIPTION	TAG	DESCRIPTION
5-A	ANCILLARY PRODUCT	5-B	ANCILLARY PRODUCT
5-C	ANCILLARY PRODUCT	5-D	ANCILLARY PRODUCT
5-E	ANCILLARY PRODUCT	5-F	ANCILLARY PRODUCT
5-G	ANCILLARY PRODUCT	5-H	ANCILLARY PRODUCT
5-I	ANCILLARY PRODUCT	5-J	ANCILLARY PRODUCT
5-K	ANCILLARY PRODUCT	5-L	ANCILLARY PRODUCT
5-M	ANCILLARY PRODUCT	5-N	ANCILLARY PRODUCT
5-O	ANCILLARY PRODUCT	5-P	ANCILLARY PRODUCT
5-Q	ANCILLARY PRODUCT	5-R	ANCILLARY PRODUCT
5-S	ANCILLARY PRODUCT	5-T	ANCILLARY PRODUCT
5-U	ANCILLARY PRODUCT	5-V	ANCILLARY PRODUCT
5-W	ANCILLARY PRODUCT	5-X	ANCILLARY PRODUCT
5-Y	ANCILLARY PRODUCT	5-Z	ANCILLARY PRODUCT

CATEGORY 6 COLLABORATIVE FURNITURE			
TAG	DESCRIPTION	TAG	DESCRIPTION
6-A	COLLABORATIVE TABLE	6-B	COLLABORATIVE TABLE
6-C	COLLABORATIVE TABLE	6-D	COLLABORATIVE TABLE
6-E	COLLABORATIVE TABLE	6-F	COLLABORATIVE TABLE
6-G	COLLABORATIVE TABLE	6-H	COLLABORATIVE TABLE
6-I	COLLABORATIVE TABLE	6-J	COLLABORATIVE TABLE
6-K	COLLABORATIVE TABLE	6-L	COLLABORATIVE TABLE
6-M	COLLABORATIVE TABLE	6-N	COLLABORATIVE TABLE
6-O	COLLABORATIVE TABLE	6-P	COLLABORATIVE TABLE
6-Q	COLLABORATIVE TABLE	6-R	COLLABORATIVE TABLE
6-S	COLLABORATIVE TABLE	6-T	COLLABORATIVE TABLE
6-U	COLLABORATIVE TABLE	6-V	COLLABORATIVE TABLE
6-W	COLLABORATIVE TABLE	6-X	COLLABORATIVE TABLE
6-Y	COLLABORATIVE TABLE	6-Z	COLLABORATIVE TABLE

CATEGORY 7 COLLABORATIVE FURNITURE			
TAG	DESCRIPTION	TAG	DESCRIPTION
7-A	COLLABORATIVE TABLE	7-B	COLLABORATIVE TABLE
7-C	COLLABORATIVE TABLE	7-D	COLLABORATIVE TABLE
7-E	COLLABORATIVE TABLE	7-F	COLLABORATIVE TABLE
7-G	COLLABORATIVE TABLE	7-H	COLLABORATIVE TABLE
7-I	COLLABORATIVE TABLE	7-J	COLLABORATIVE TABLE
7-K	COLLABORATIVE TABLE	7-L	COLLABORATIVE TABLE
7-M	COLLABORATIVE TABLE	7-N	COLLABORATIVE TABLE
7-O	COLLABORATIVE TABLE	7-P	COLLABORATIVE TABLE
7-Q	COLLABORATIVE TABLE	7-R	COLLABORATIVE TABLE
7-S	COLLABORATIVE TABLE	7-T	COLLABORATIVE TABLE
7-U	COLLABORATIVE TABLE	7-V	COLLABORATIVE TABLE
7-W	COLLABORATIVE TABLE	7-X	COLLABORATIVE TABLE
7-Y	COLLABORATIVE TABLE	7-Z	COLLABORATIVE TABLE

C&S LIMITED Consulting Engineers

BGLS

SHOOZ

TRANSPORT CANADA

JOHN CABOT BUILDING

TENANT FIT-UP

ST. JOHN'S, NL

ANNEX C - F5

OFFICE TYPE 21 - 4.5m2

OFFICE TYPE 24 - 4.5m2

OFFICE TYPE 27 - 4.5m2

OFFICE TYPE 28 - 4.5m2

OFFICE TYPE 29

OFFICE TYPE 22 - 4.5m2

OFFICE TYPE 25 - 4.6m2

OFFICE TYPE 26 - 4.4m2

OFFICE TYPE 23 - 4.8m2

OFFICE TYPE 26 - 4.4m2

OFFICE TYPE 21 - 4.5m2

OFFICE TYPE 24 - 4.5m2

OFFICE TYPE 27 - 4.5m2

OFFICE TYPE 28 - 4.5m2

OFFICE TYPE 29

OFFICE TYPE 21 - 4.5m2

OFFICE TYPE 24 - 4.5m2

OFFICE TYPE 27 - 4.5m2

OFFICE TYPE 28 - 4.5m2

OFFICE TYPE 29