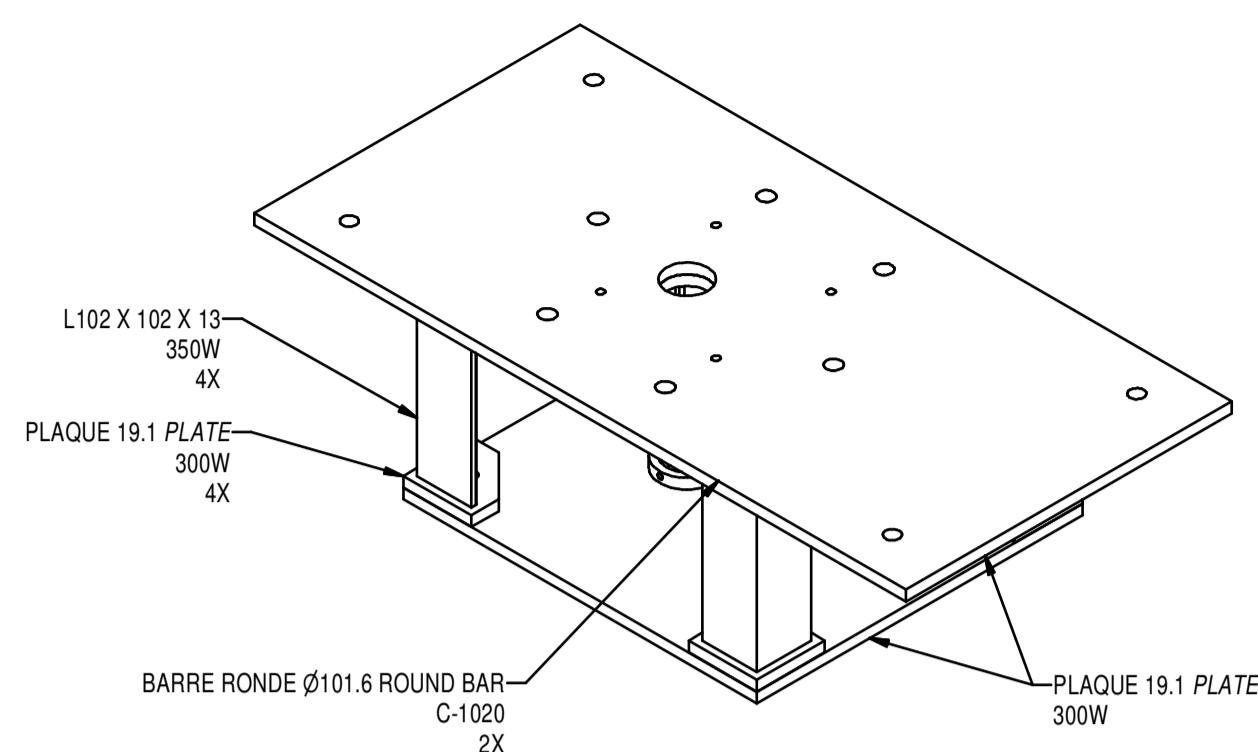
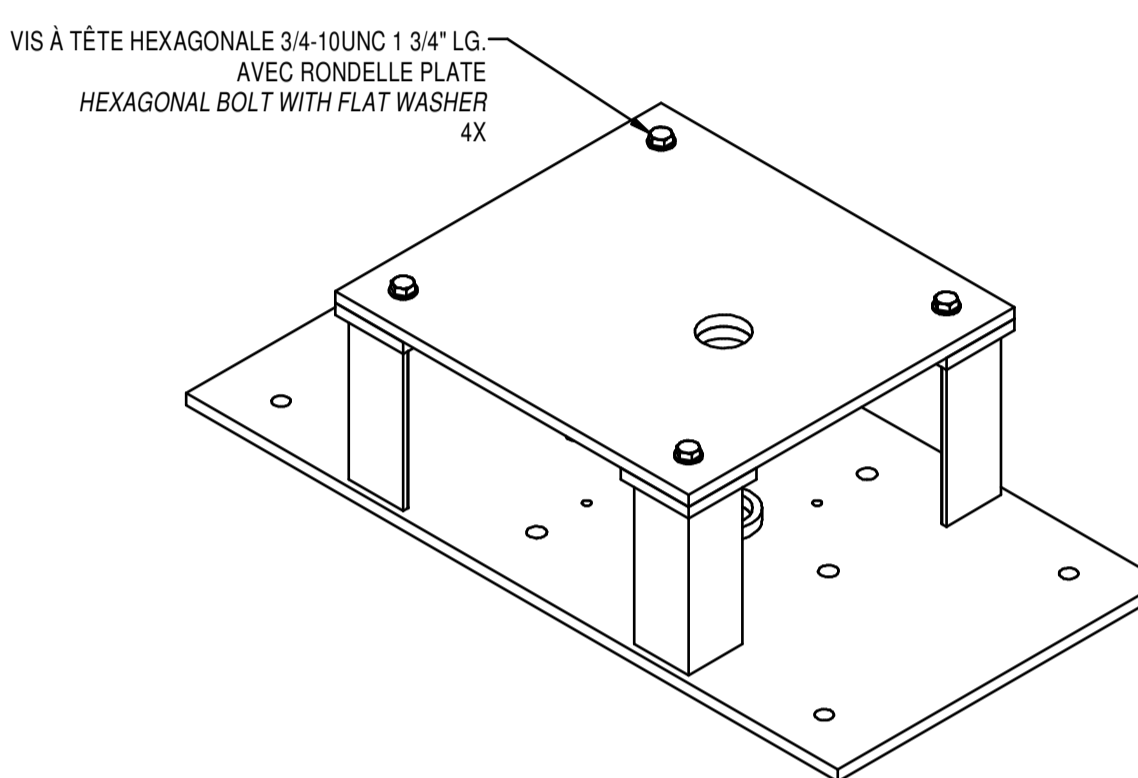


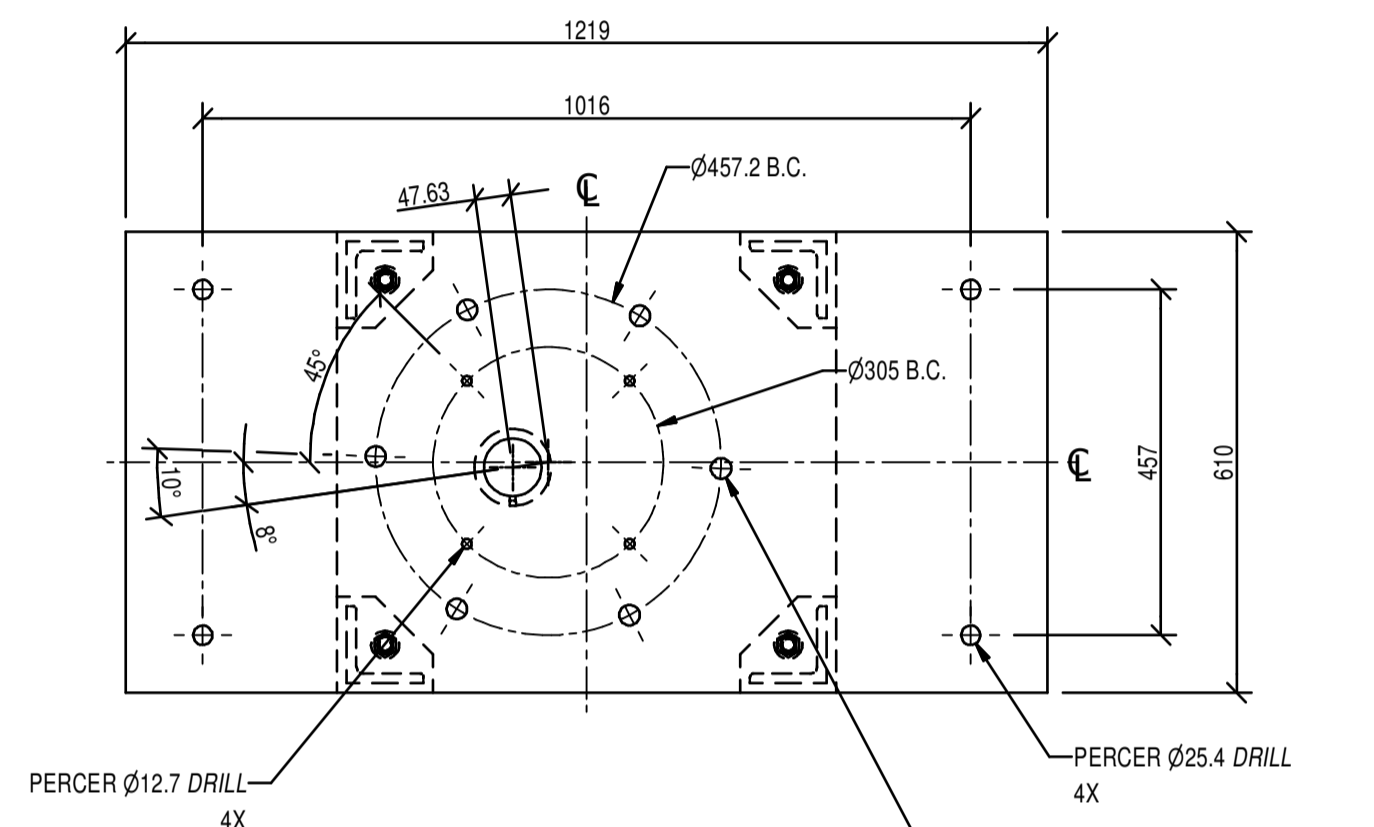
COUPE A-A SECTION



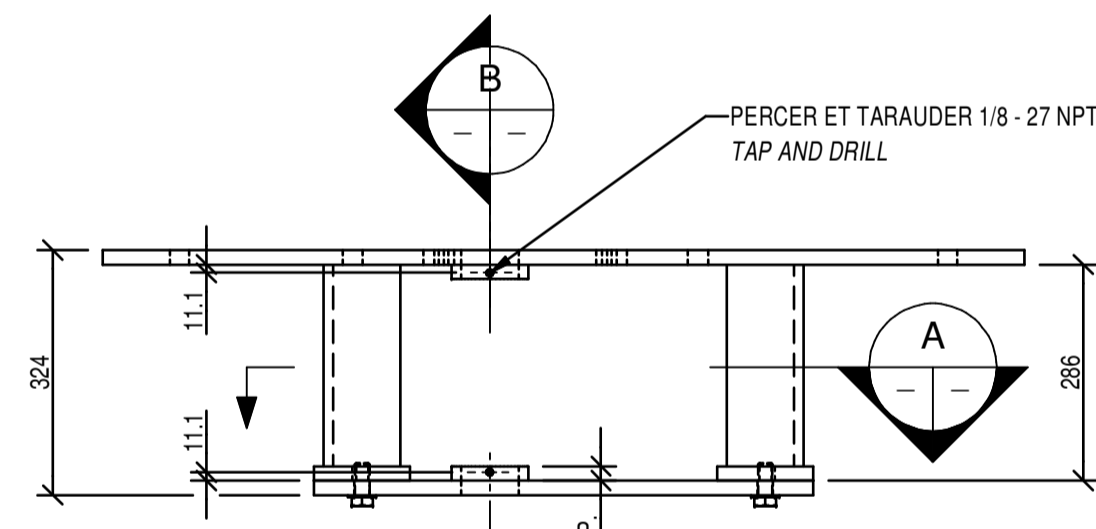
PEINTURER NOIR SELON DEVIS  
PAINT BLACK AS SPECIFICATION



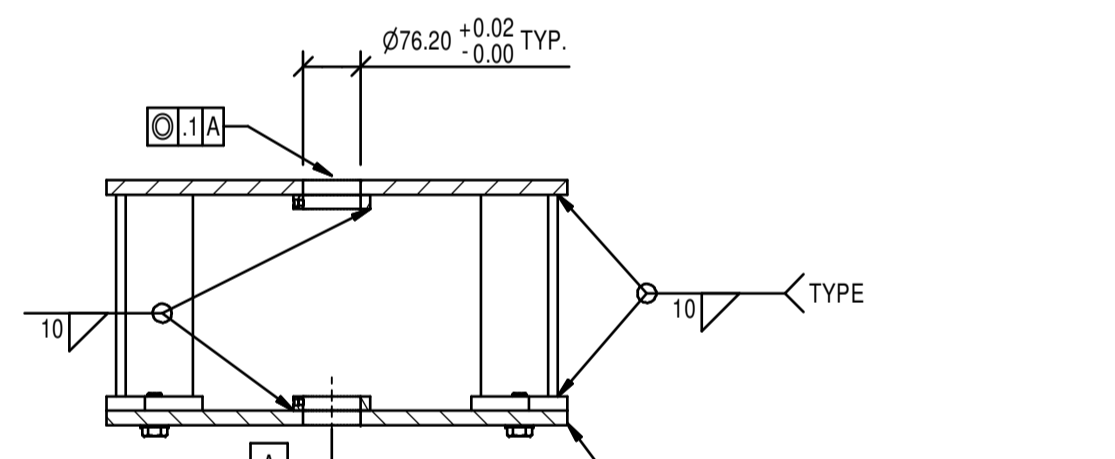
VIS À TÊTE HEXAGONALE 3/4-10UNC 1 3/4\"/>



PLAN - TOP



ÉLEVATION - ELEVATION

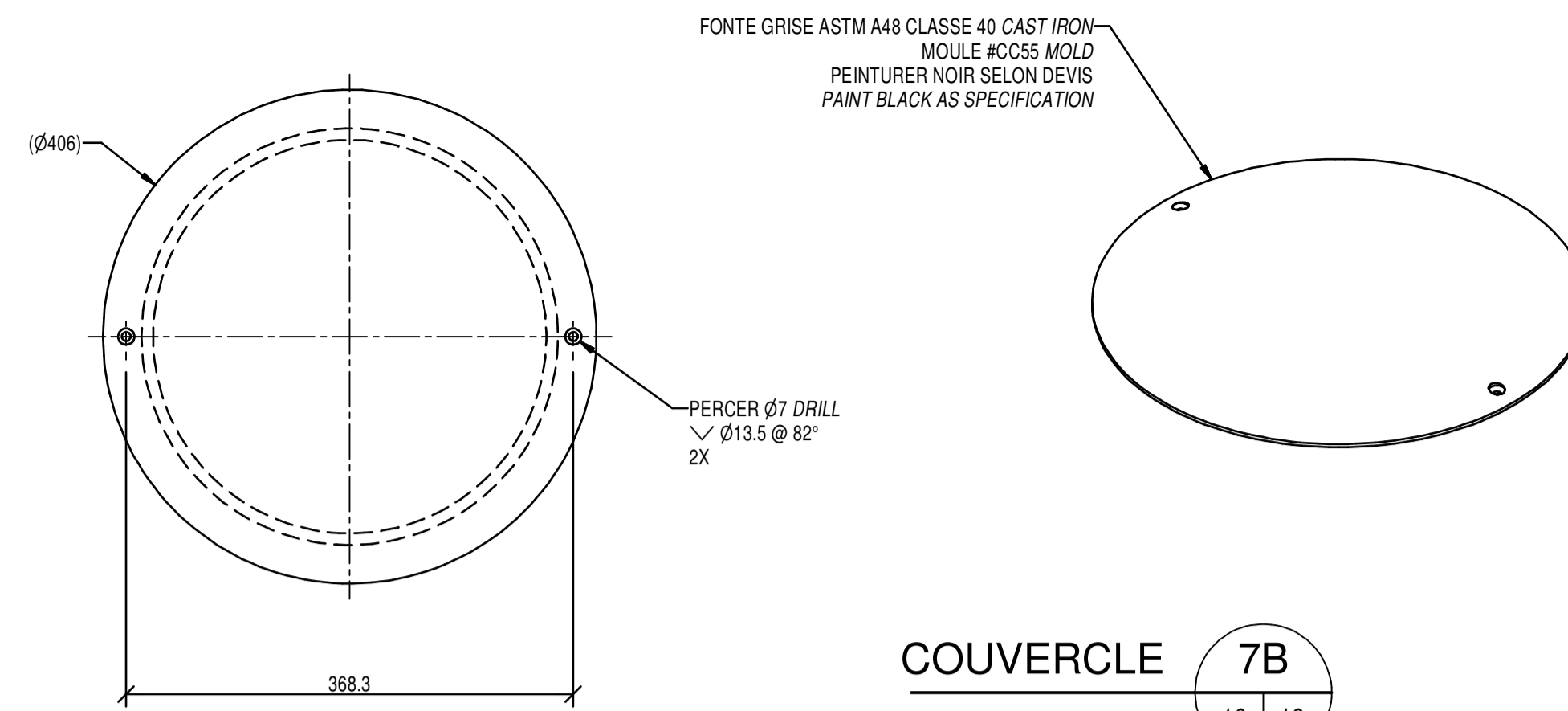


COUPE B-B SECTION

PLAQUE DE MONTAGE  
MOUNTING PLATE

ÉCH. - SCALE 1: 10

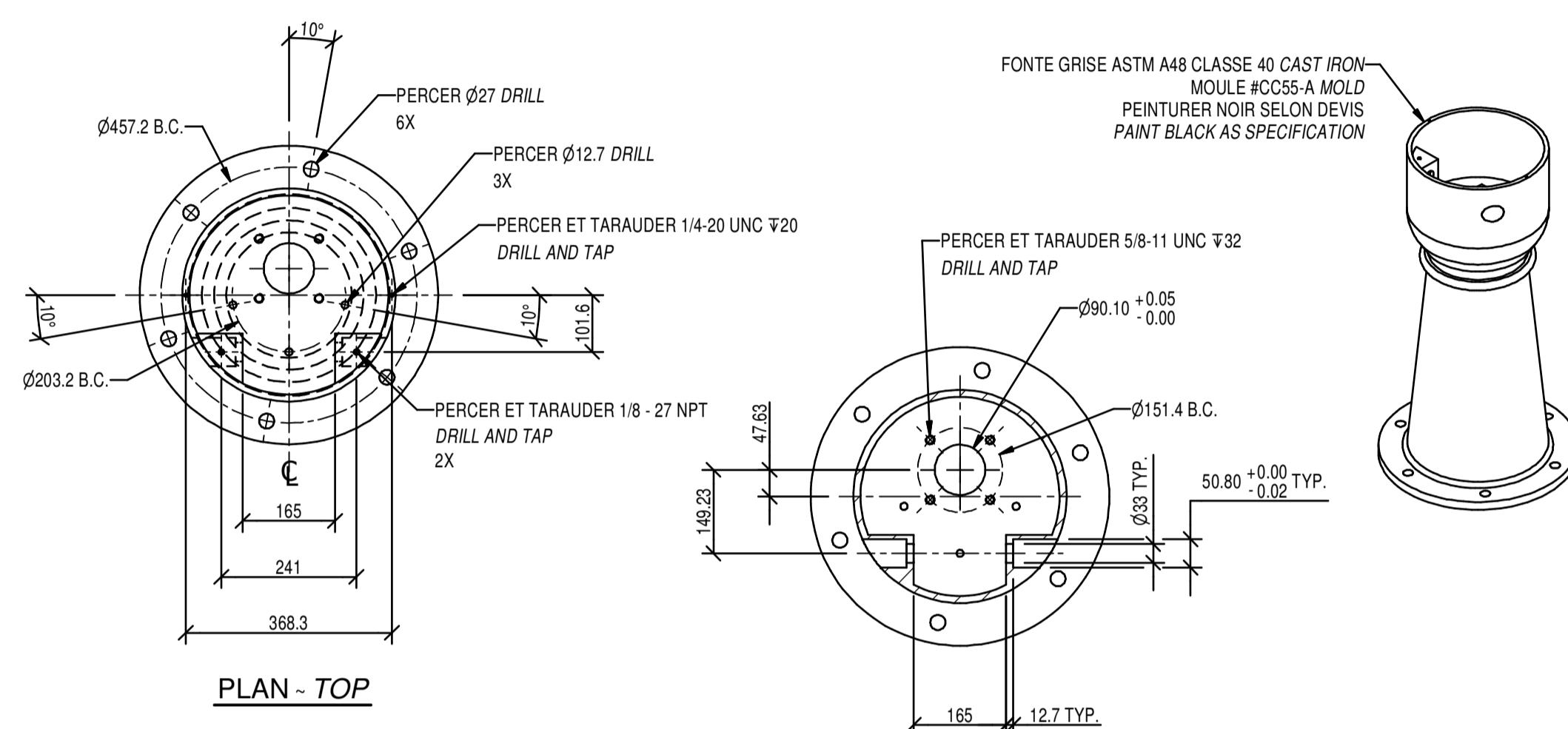
CÔTÉ DROIT : TEL QUEL  
CÔTÉ GAUCHE : OPPOSÉ  
RIGHT SIDE : AS SHOWN  
LEFT SIDE : OPPOSITE



COUVERCLE 7B

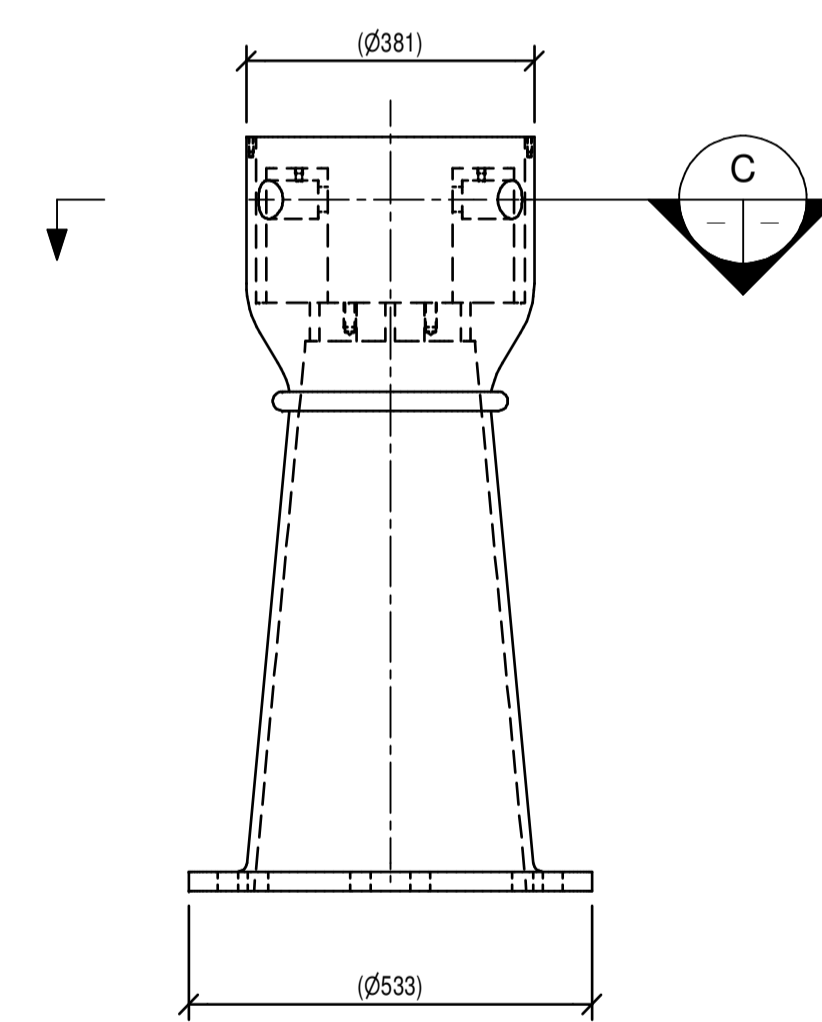
LID 16 18

ÉCH. - SCALE 1: 5

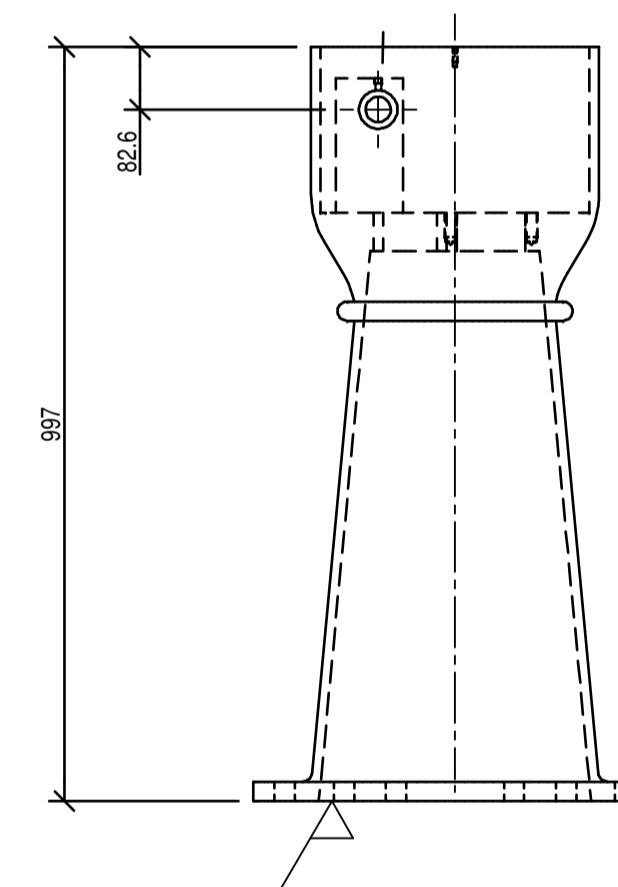


PLAN - TOP

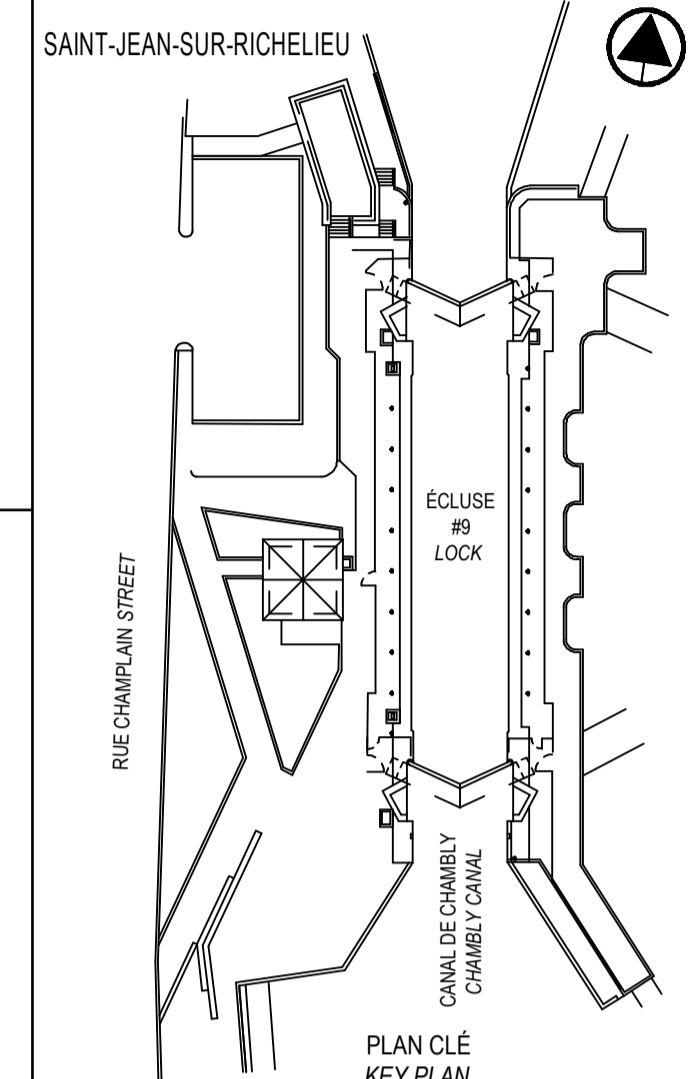
COUPE C-C SECTION



ÉLEVATION - ELEVATION



PROFIL - PROFILE



SCEAUX SEALS

01	EMIS POUR SOUMISSION ISSUED FOR SUBMISSION	2019-08-07
00	EMIS POUR SOUMISSION ISSUED FOR SUBMISSION	2019-07-23

révisions revisions		date
A	no du détail detail no	
B	no de la feuille-où détail exigé sheet no - where detail required	
C	no de la feuille-où détaillé sheet no - where detailed	

Projet  
Project

PARCS CANADA  
PARKS CANADA

RÉFECTION DE L'ÉCLUSE N°9  
DU CANAL-DE-CHAMBY

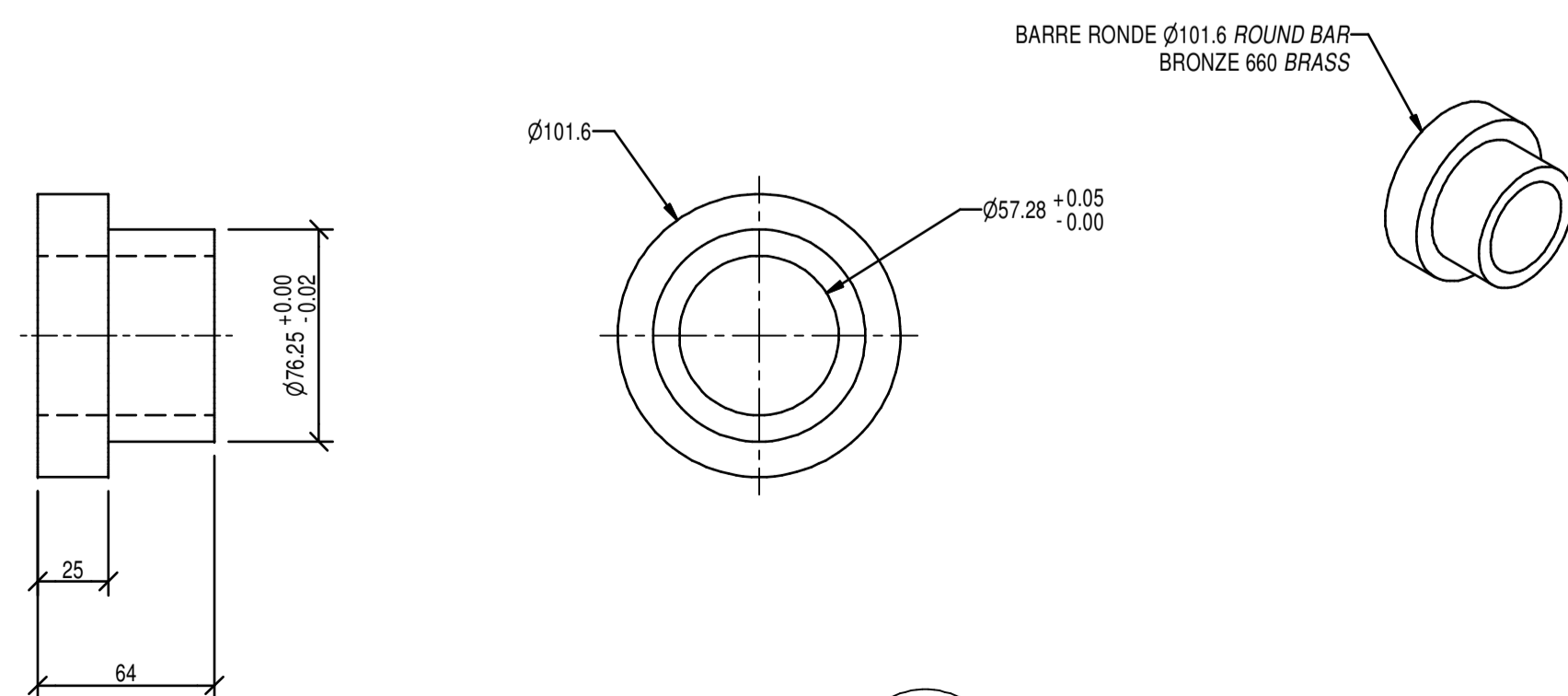
REPAIR OF LOCK #9  
CHAMBY CANAL

Dessin  
Drawing

MÉCANIQUE  
MECHANICAL

DÉTAILS  
MÉCANISME OUVERTURE DE PORTE  
DETAIL  
DOOR OPENING MECHANISM

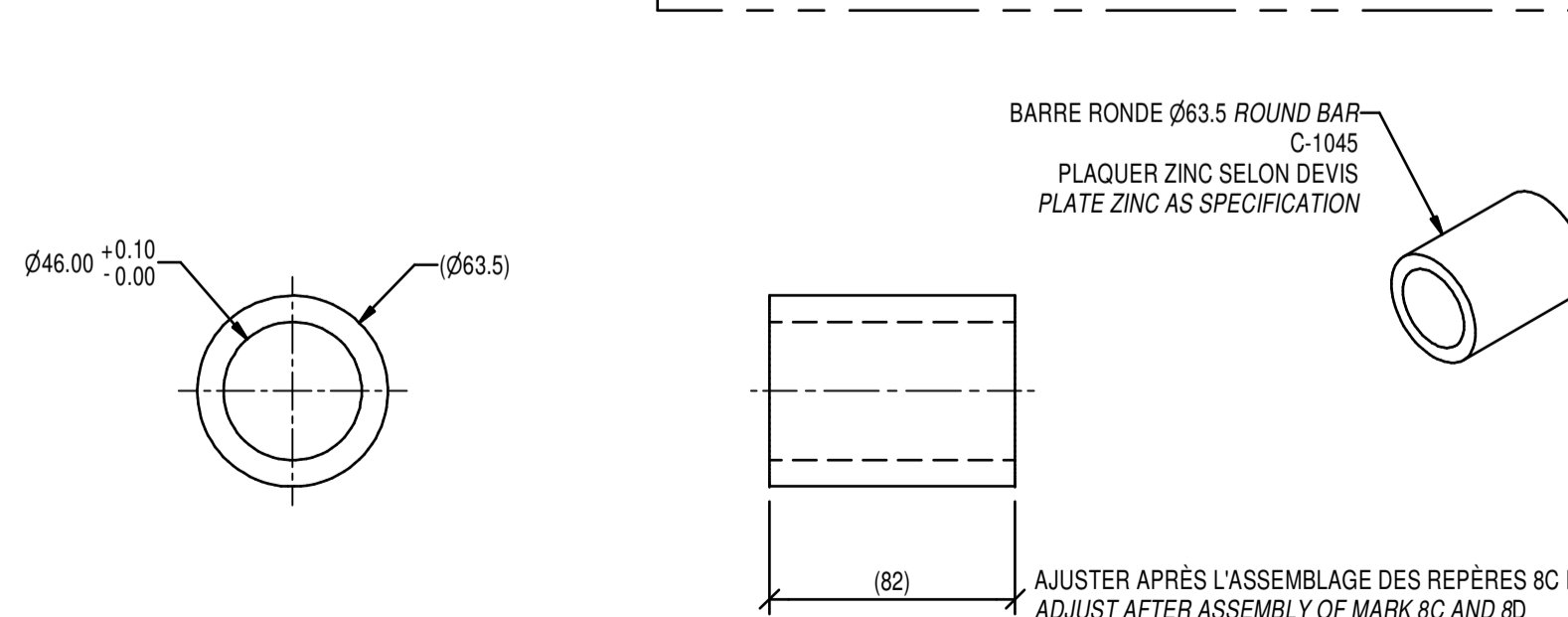
Conçu par Frédéric Dumont, ing.	Designed by 2019-05-21 Date
Dessiné par Jacques Ouellet, techn.	Drawn by 2019-05-21 Date
Approuvé par Jean-René Tremblay, ing.	Approved by 2019-05-21 Date
Soumission Nadia Rusztyn, ing. jr	Tender 2019 Date
Administrateur de projets APC	PCA Project Manager
No de projet CCHM-1446	No de contrat Contract number
APC	PCA
Nom du fichier RUC-20-212-MC.18.DWG	File name No de classement
No de plan ou dessin RUC-20-212-MC.18	File name No feuille Drawing no



COUSSINET 7G

BUSHING 16 18

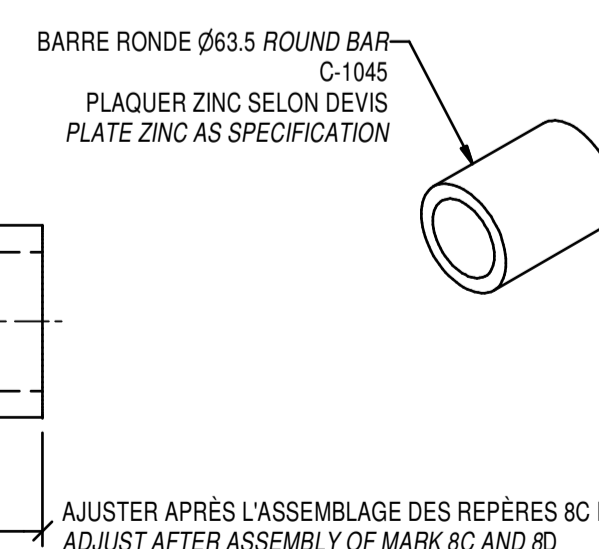
ÉCH. - SCALE 1: 2.5



ESPACEUR 8H

SPACER 16 18

ÉCH. - SCALE 1: 2.5



CABESTAN 7A

CABESTAN 16 18

ÉCH. - SCALE 1: 10

SOUDEURE TYPIQUE SAUF INDICATION CONTRAIRE  
TYPICAL WELDING UNLESS OTHERWISE INDICATED

t = MATERIEL LE PLUS ÉPAIS  
THE MOST THICK MATERIAL

TOLÉRANCES GÉNÉRALES SI NON INDIQUÉES GENERAL TOLERANCES IF NOT INDICATED	
ASSEMBLAGE ~ ASSEMBLY	USINAGE ~ MACHINING
0 A - TO 25 ..... ± 1	0.0 ..... ± 1.0
25 A - TO 600 ..... ± 1.5	0.00 ..... ± 0.5
600 + ..... ± 3	0.000 ... ± 0.1
ANGLE ..... ± 1°	√ .... 3.2

CE DOCUMENT NE DOIT PAS ÊTRE UTILISÉ À DES FINS DE CONSTRUCTION

THIS DOCUMENT MUST NOT BE USED FOR CONSTRUCTION