



## RETURN BIDS TO:

## RETOURNER LES SOUMISSIONS À:

Bid Receiving Public Works and Government  
Services Canada/Réception des soumissions Travaux  
publics et Services gouvernementaux Canada  
1713 Bedford Row  
Halifax, N.S./Halifax, (N.É.)  
Halifax  
Nova Scotia  
B3J 1T3  
Bid Fax: (902) 496-5016

## SOLICITATION AMENDMENT MODIFICATION DE L'INVITATION

The referenced document is hereby revised; unless otherwise  
indicated, all other terms and conditions of the Solicitation  
remain the same.

Ce document est par la présente révisé; sauf indication contraire,  
les modalités de l'invitation demeurent les mêmes.

### Comments - Commentaires

Vendor/Firm Name and Address  
Raison sociale et adresse du  
fournisseur/de l'entrepreneur

Issuing Office - Bureau de distribution  
Atlantic Region Acquisitions/Région de l'Atlantique  
Acquisitions  
1713 Bedford Row  
Halifax, N.S./Halifax, (N.É.)  
Halifax  
Nova Scotia  
B3J 1T3

<b>Title - Sujet</b> TC - Furniture Request NFLD	
<b>Solicitation No. - N° de l'invitation</b> EC096-200866/A	<b>Amendment No. - N° modif.</b> 003
<b>Client Reference No. - N° de référence du client</b> EC096-20-0866	<b>Date</b> 2019-08-20
<b>GETS Reference No. - N° de référence de SEAG</b> PW-\$HAL-219-10755	
<b>File No. - N° de dossier</b> HAL-9-83072 (219)	<b>CCC No./N° CCC - FMS No./N° VME</b>
<b>Solicitation Closes - L'invitation prend fin</b> <b>at - à 02:00 PM</b> <b>on - le 2019-08-29</b>	<b>Time Zone</b> <b>Fuseau horaire</b> Atlantic Daylight Saving Time ADT
<b>F.O.B. - F.A.B.</b> <b>Plant-Usine:</b> <input type="checkbox"/> <b>Destination:</b> <input checked="" type="checkbox"/> <b>Other-Autre:</b> <input type="checkbox"/>	
<b>Address Enquiries to: - Adresser toutes questions à:</b> Richard, Linda K.	<b>Buyer Id - Id de l'acheteur</b> hal219
<b>Telephone No. - N° de téléphone</b> (902) 402-9059 ( )	<b>FAX No. - N° de FAX</b> (902) 496-5016
<b>Destination - of Goods, Services, and Construction:</b> <b>Destination - des biens, services et construction:</b>	

Instructions: See Herein

Instructions: Voir aux présentes

<b>Delivery Required - Livraison exigée</b>	<b>Delivery Offered - Livraison proposée</b>
<b>Vendor/Firm Name and Address</b> <b>Raison sociale et adresse du fournisseur/de l'entrepreneur</b>	
<b>Telephone No. - N° de téléphone</b> <b>Facsimile No. - N° de télécopieur</b>	
<b>Name and title of person authorized to sign on behalf of Vendor/Firm</b> <b>(type or print)</b> <b>Nom et titre de la personne autorisée à signer au nom du fournisseur/</b> <b>de l'entrepreneur (taper ou écrire en caractères d'imprimerie)</b>	
<b>Signature</b>	<b>Date</b>

EC096-200866  
AMENDMENT 3

This amendment is issued in response to the following:

**1. Under Date of Bid Closing**

Delete: August 26, 2019 2:00 p.m.

Insert: August 29, 2019 2:00 p.m.

**2. In response to the following questions:**

**Question 1:**

Re CAT 1B Item 8. GoCUID is for Upmount Overhead and Description is for Hutch. As the request is for Hinged doors this item should be Non-SA to capture fair and accurate pricing, or at the very least a more appropriate GoCUID such as hutch with a single sliding door rather than an upmount, would the CA accept 1bHHCLO12L60XSLXXKX as another available GoCUID.

**Answer 1:**

Please replace for 1bHHCLS15L60XFTXXKX.

**Question 2:**

Re CAT 1B Item 8. A Hutch at 12"D, though on the SA, is not the most stable option over extended lengths unless mounted to a wall, especially if over top-loaded. Would the CA accept the 15"D unit as it provides more stability?

**Answer 2:**

As per answer to Q1, please replace for 1bHHCLS15L60XFTXXKX.

**Question 3:**

Re NSA Item 2 L Shaped Height-adjustable surface. Can you please provide a drawing of office 18 to better understand the sizing and application of this component

**Answer 3:**

Please see Annex C, page F4

**Question 4:**

Re NSA Item says (30hx24wx24d) however, the pedestal itself is 15"W + a C-leg? Please send the drawing for a better understanding of the application.

**Answer 4:**

See below.



**3. Under Annex A – Requirement and Basis of Payment – Category 1B**

Delete: the previous table for Category 1B

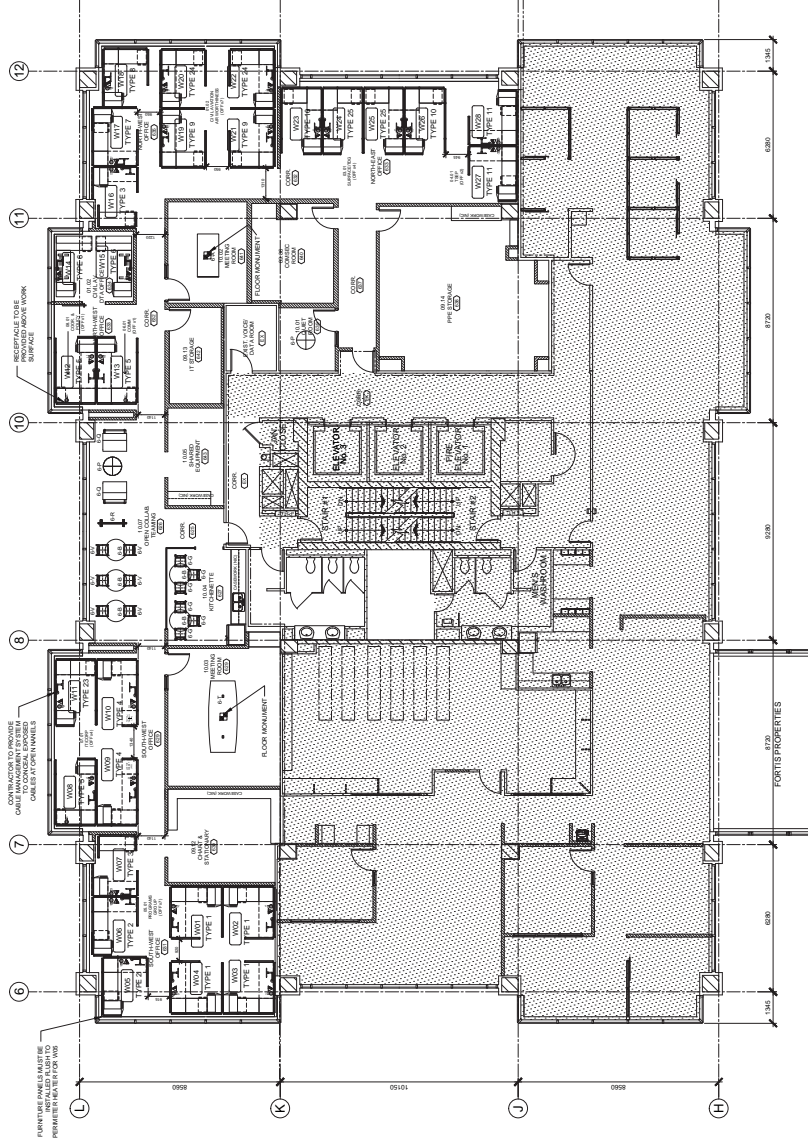
Insert: the following (product change bolded and in italics)

Category 1B						
1	1bFFHREN24L36 WNOLNY	Panel mount worksurface (36x24)	17		\$	\$
2	1bFFHREN24L42 WNOLNY	Panel mount worksurface (42x24)	39		\$	\$

3	1bFFHREN24L48 WNOLNY	Panel mount worksurface (48x24)	18		\$	\$
4	1bFFHREN24L54 WNOLNY	Panel mount worksurface (54x24)	4		\$	\$
5	1bFFHREN24L60 WNOLNY	Panel mount worksurface (60x24)	2		\$	\$
6	1bFFHREG24L60 WNOLNY	Worksurface 2 full gables (30hx60wx24d) <b>**No Grommet</b> (office Type 6)	2		\$	\$
7	1bFFHREG24L54 WNOLNY	Worksurface 2 full gables (30h54wx24d) <b>**No Grommet</b> (office 18)	1		\$	\$
8	<b>1bHHCLS15L60X FTXXX</b>	Hutch 60" wide Hinged doors (office Type 6) GoCuid for: overhead with single slinding doors, keyed, 60" long	2		\$	\$
9	1bFFHREW30L48 WNOLNY	Worksurface 1 full / 1 half gable (30hx48wx30d) <b>**No Grommet</b> (office type 18)	1		\$	\$
10	1bSPSOLGL2430 54XKXX	Personal Storage Tower- Wardrobe one side, 2 file drawers at bottom and open cupboard above. 1372mm (54 in.) high. 24x30 –Right handed. Laminate (office 6 and 18)	3			
11	1bSPSOLGA2430 54XKXX	Personal Storage Tower- Wardrobe one side, 2 file drawers at bottom and open cupboard above. 1372mm (54 in.) high. 24x30 (38 Right handed and 42 Left Handed)	80		\$	\$
12	1bSPBMCAL1524 XXYKXX	Box/File Pedestal on casters with cushion seat, 24" deep- Laminate (office 6)	2			

13	1bSBBSLGL1524 XXNKXX	Box/Box/File Pedestal, 24" deep- Laminate. To support Non-SA item 3 (Office 18)	1			
14	1bSPBMCAA1524 XXYKXX	Box/File Pedestal on casters with cushion seat, 24" deep.	47		\$	\$
15	1bSBBSLGA1524 XXNKXX	Box/Box/File Pedestal- Work Surface Supporting, Depth 610mm (24 in.)	35		\$	\$
16	Accessory Rail Component	Telephone Shelf	15			
17	Accessory Rail Component	Binder Bin	80			
18	Accessory Rail Component	Horizontal Paper Sorter	120			
19	Accessory Rail Component	Vertical Paper Sorter	80			

All other terms and conditions remain unchanged.



## LEVEL 6 NEW FURNITURE PLAN



KEYBOARD TRAVEL.

BE PROVIDED FOR ALL OFFICES  
FOLLOWING:

W08	W36
W09	W39
W10	W45
W11	W46
W23	W47
W24	W68
W25	W72
W26	W73
W27	W74
W28	W75
W76	W80
W81	W43
W53	W82

**DRAWING LEGEND:**

NAME                      ROOM NAME AND #

OFFICE TYPE IDENTIFIER

W01 ● OFFICE #

TYPE 1 ● OFFICE TYPE

CATEGORY TYPE IDENTIFIER  
(CAT-TYPE-1 LENGTH IN INCHES)

1A-A-##

DATA OUTLET,  
COORDINATE WITH  
ELECTRICAL

POWER OUTLET WITH 3 DBL.  
RECEPTACLES FOR EACH VMS  
COORDINATE WITH ELECTRICAL

**DRAWING NOTES:**

1. RIGHT HAND / LEFT HAND INSTALLATION AS, SEE PLAN.
2. ORIENTATION AS SHOWN ON PLAN.
3. WHERE MORE THAN ONE PANEL TYPE INDICATED, SEE PLAN.
4. CONTRACTOR TO CONFIRM ALL QUANTITIES.
5. ALL FURNITURE PANELS TO BE INSTALLED 4" CLEAR OF PERIMETER HEATERS UNLESS OTHERWISE NOTED ON DRAWING.



Shooy  
Suite 201  
Candor Place  
St. John's, NL  
A1A 1C1  
Tel: 709.734.4122  
Fax: 709.734.4455

GSN # 17-4532-13

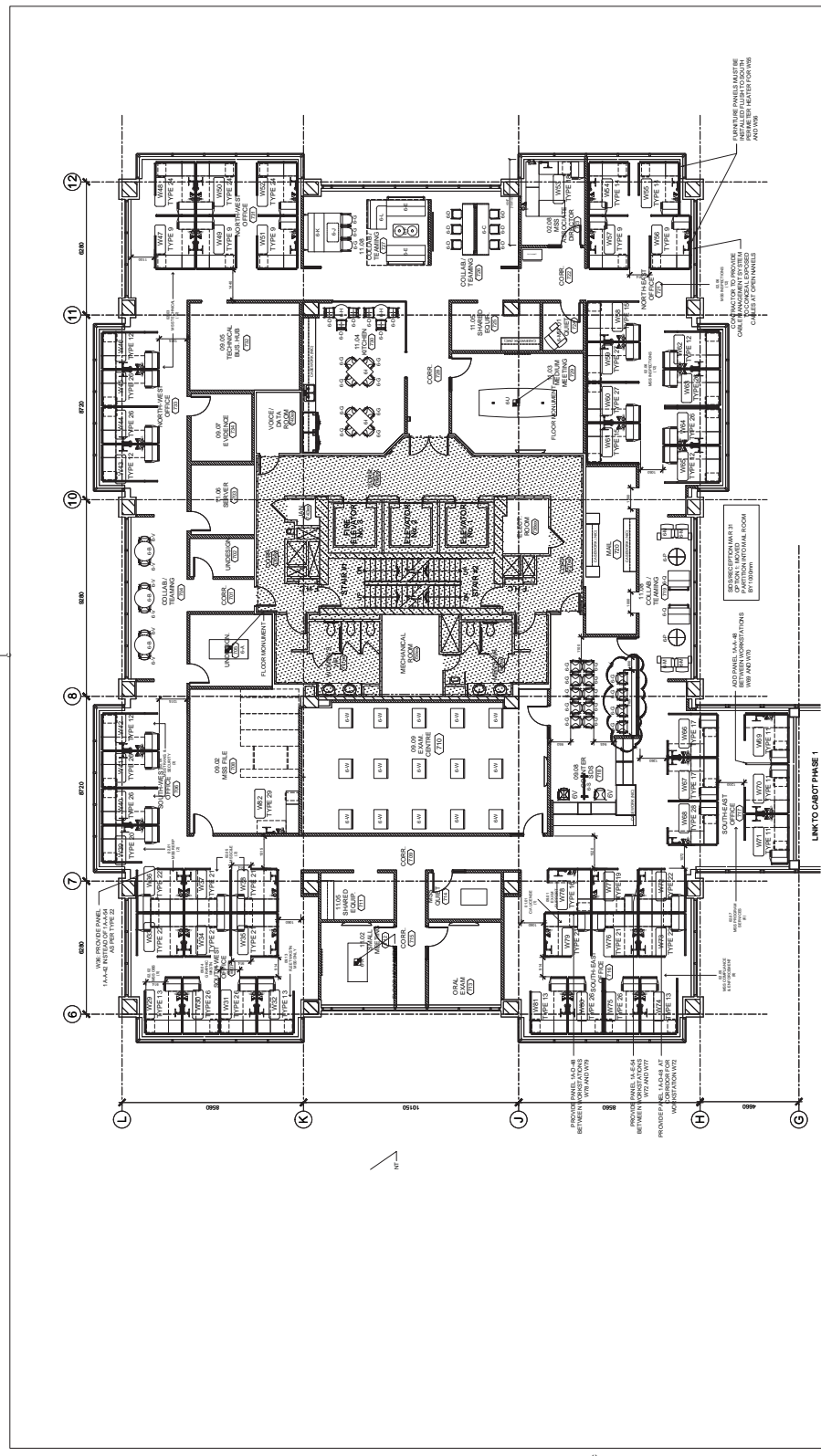
Not for Construction  
Xref All Revisions to Project Schedule  
JAN. 2019

REVISION	DESCRIPTION	DATE
2	REVISION 01	JAN 2019
0	ISSUED FOR TENDER	JUN 2018

TRANSPORT CANADA  
JOHN CABOT BUILDING  
TENANT FIT-UP  
ST. JOHN'S, NL

LEVEL 7 FLOOR PLAN  
FURNITURE KEYPLAN

Designed by	T. BIRMINGHAM
Date	JULY 2018
Drawn by	C. BIRD
Date	JULY 2018
Reviewed by	
Date	
Checked by	
Date	
Project Manager	ANNEX C - F2
Project Number	GOC914852
Revision	



LEVEL 7 FURNITURE PLAN

SCALE: 1:100

DRAWING LEGEND:

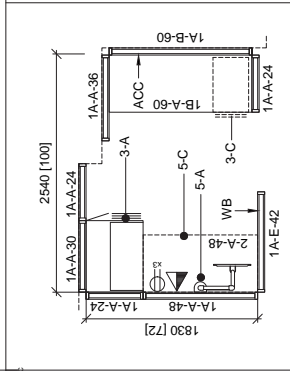
- ROOM NAME AND #
- OFFICE TYPE IDENTIFIER
- CATEGORY TYPE IDENTIFIER (CAT TYPE LENGTH INCHES)
- DATA OUTLET
- COORDINATE WITH ELECTRICAL
- POWER OUTLET WITH 2.0M
- COORDINATE WITH ELECTRICAL

DRAWING NOTES:

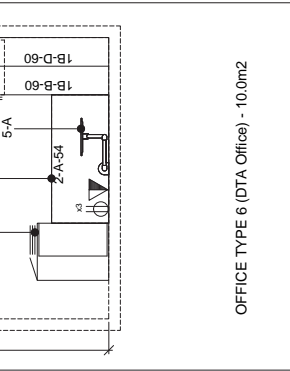
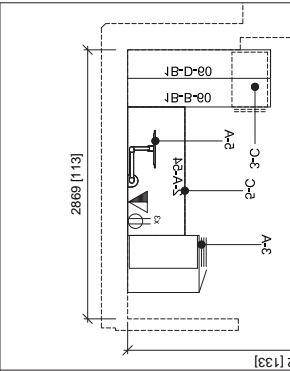
- RIGHT HAND / LEFT HAND INSTALLATION AS SEE PLAN.
- CONTRACTOR TO CONFIRM ALL QUANTITIES.
- ALL FURNITURE PANELS TO BE INSTALLED 4" CLEAR OF PERIMETER HEATERS UNLESS OTHERWISE NOTED ON DRAWING.

KEYBOARD TRAYS:  
KEYBOARD TRAYS TO BE PROVIDED FOR ALL OFFICES EXCLUDING THE FOLLOWING:

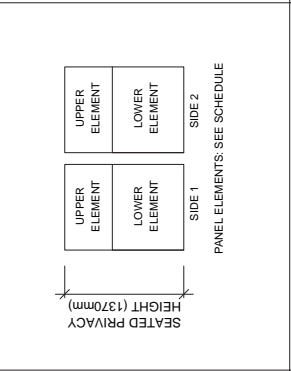
- W08
- W09
- W10
- W11
- W12
- W13
- W14
- W15
- W16
- W17
- W18
- W19
- W20
- W21
- W22
- W23
- W24
- W25
- W26
- W27
- W28
- W29
- W30
- W31
- W32



OFFICE TYPE 3 - 4.3m2





Downloaded from <http://ajphaphysocpharm.sagepub.com> at National Archive Publishing Co on June 11, 2015

[illegible]

TAG	DESCRIPTION
5-A	SINGLE MONITOR ARM

64C	GARDEN BANQUETTE SEATING		
6L	INDOOR BANQUETTE SEATING FOUR 4 X 10 units		
64J	QUIET ROOM LOUNGE CHAIR		

A-A-#	CATEGORY TYPE IDENTIFIER (CAT-TYPE-LENGTH IN INCHES)
	DATA OUTLET, COORDINATE WITH ELECTRICAL
	POWER OUTLET WITH 3 DBL. RECEPTACLES FOR EACH WKSIN. COORDINATE WITH ELECTRICAL
FABRIC	UPHOLSTERED PANEL

---

Estimation of Age- and Sex-Specific Health-Related Quality of Life

2	REVISION 01	June 27 2019
1	ISSUED FOR TENDER	June 06 2019
revisions		date

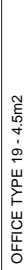
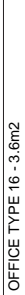
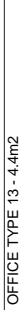
  

project	TRANSPORT CANADA JOHN CABOT BUILDING
project	

FURNITURE SCHEDULE	
designed	T. BIRMINGHAM
date	JULY 1918
drawn	C. BAIRD
date	JULY 1918
approved	approved

FORMIDEE



FURNITURE SCHEDULE

**DRAWING LEGEND:**

- ROOM NAME AND #
- OFFICE TYPE IDENTIFIER  
(CATEGORY LENGTH IN INCHES)
- DATA OUTLET
- ELECTRONIC EQUIPMENT
- COORDINATE WITH RECEPT VOLTAGE WITH A PDL  
WKTIN. COORDINATE WITH RECEPT VOLTAGE FOR EACH
- UNHQA. COORDINATE WITH ACCESSORY RAIL
- UNHQA. COORDINATE WITH CLEARING





**DRAWING NOTES:**

1. RIGHT HAND LETTER INSTALLATION AS SHOWN
2. CONTRACTOR TO CONFIRM ALL QUANTITIES.

**DRAWING NOTES:**

1. RIGHT HAND / LEFT HAND INSTALLATION AS, SEE PLAN.
2. ORIENTATION AS SHOWN ON PLAN.
3. CONTRACTOR TO CONFIRM ALL QUANTITIES.

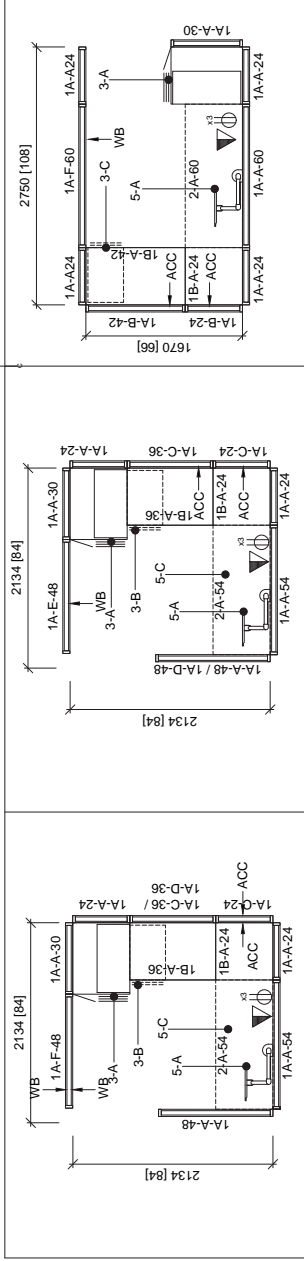
NOTES / LEGEND

 <p>Trudeau Palace of Government Ottawa Canada</p>		<p>TECHNICAL ELECTRICAL CONSULTANT</p>		<p><b>CECL CASL LIMITED</b> <b>Consulting Engineers</b></p>	<p>AND HEAT</p>		<p>Suite 201 Caledonia Plaza Caledonia, Ont. L7C 3H4 St. John's, N.L. ATA 1C1 Tel: 709/738-4422 Fax: 709/738-4455</p>	<p>GSA # 17-458-13</p>
---	---	--	---	---	-----------------	---	---	------------------------

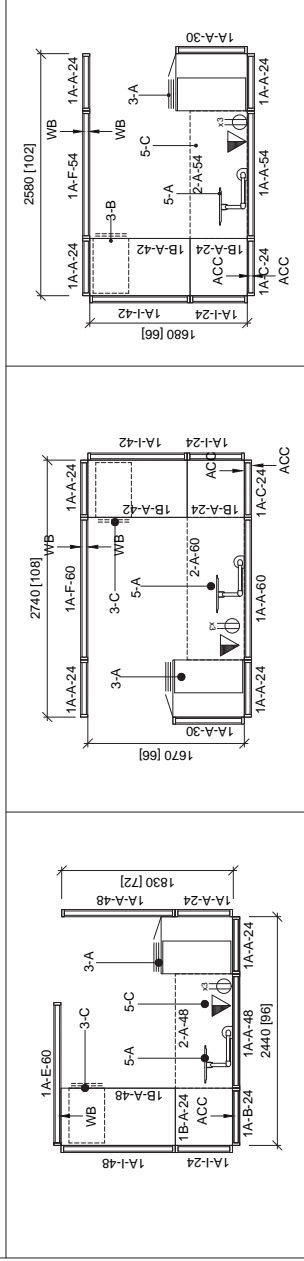
Xpert M1 Revisions to Project JAN. 31/19		2 1	REVISION 01 ISSUED FOR TENDER	JAN 27 JAN 08 JAN 29	REVISED PROJECT	TRANSPORT CANADA
---	--	--------	----------------------------------	----------------------------	--------------------	------------------

<p>JOHN CABOT BUILDING</p> <p>TENANT FIT-UP</p> <p>ST. JOHN'S, NL</p>	<p>drawing</p> <p>revision</p>	<p>designer T. BIRMINGHAM</p> <p>date JULY 2018</p> <p>drawn C. BARD</p> <p>date JULY 2018</p> <p>approved</p> <p>date</p> <p>revision</p>	<p>comp</p> <p>approved</p> <p>date</p> <p>revision</p>	<p>PROJECT: Office Upgrade</p> <p>client: St. John's Hospital</p> <p>project code: GOC914852</p>	<p>drawing title</p> <p>fit up drawing</p>
<p>OFFICE TYPES / FURNITURE SCHEDULE</p>				<p>ANNEX C - F4</p>	

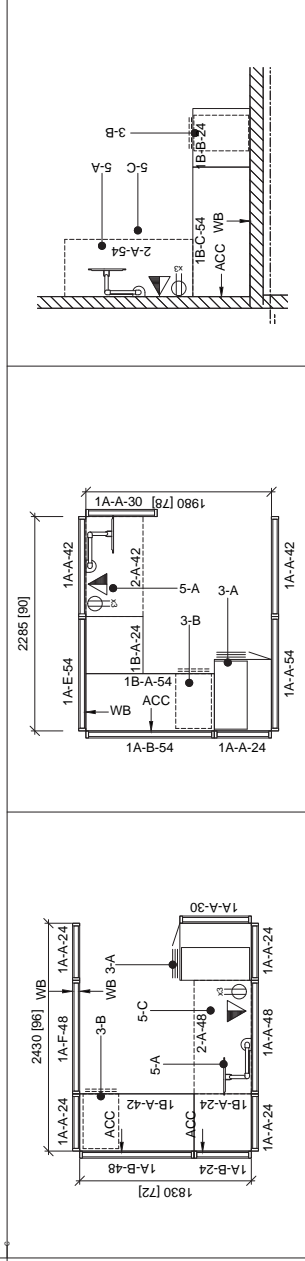
E-ORNAICO 0.5E



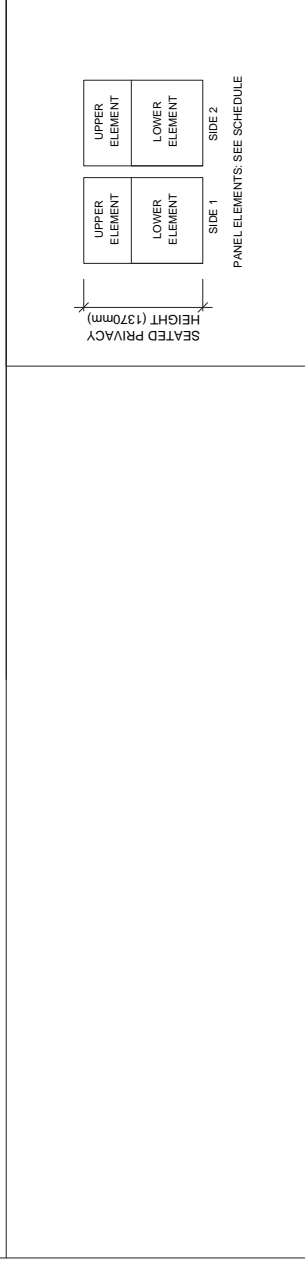
OFFICE TYPE 21 - 4.5m2



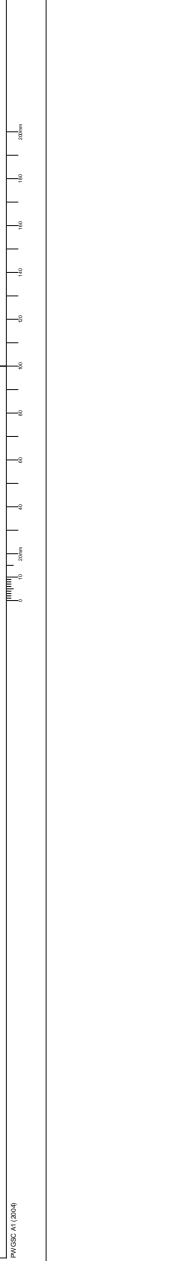
OFFICE TYPE 22 - 4.5m2



OFFICE TYPE 23 - 4.8m2



OFFICE TYPE 24 - 4.5m2



OFFICE TYPE 25 - 4.6m2



OFFICE TYPE 26 - 4.4m2



OFFICE TYPE 27 - 4.5m2



OFFICE TYPE 28 - 4.5m2



OFFICE TYPE 29



OFFICE TYPE 30



OFFICE TYPE 31



OFFICE TYPE 32



OFFICE TYPE 33



OFFICE TYPE 34



OFFICE TYPE 35



OFFICE TYPE 36



OFFICE TYPE 37



OFFICE TYPE 38



OFFICE TYPE 39



OFFICE TYPE 40



OFFICE TYPE 41



OFFICE TYPE 42



OFFICE TYPE 43



OFFICE TYPE 44



OFFICE TYPE 45



OFFICE TYPE 46



OFFICE TYPE 47



OFFICE TYPE 48



OFFICE TYPE 49



OFFICE TYPE 50



OFFICE TYPE 51



OFFICE TYPE 52



OFFICE TYPE 53



OFFICE TYPE 54



OFFICE TYPE 55



OFFICE TYPE 56



OFFICE TYPE 57



OFFICE TYPE 58



OFFICE TYPE 59



OFFICE TYPE 60



OFFICE TYPE 61



OFFICE TYPE 62



OFFICE TYPE 63



OFFICE TYPE 64



OFFICE TYPE 65



OFFICE TYPE 66



OFFICE TYPE 67



OFFICE TYPE 68



OFFICE TYPE 69



OFFICE TYPE 70