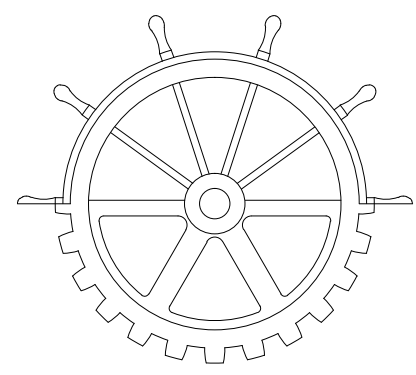




Public Services and Procurement Canada
Services publics et Approvisionnement Canada

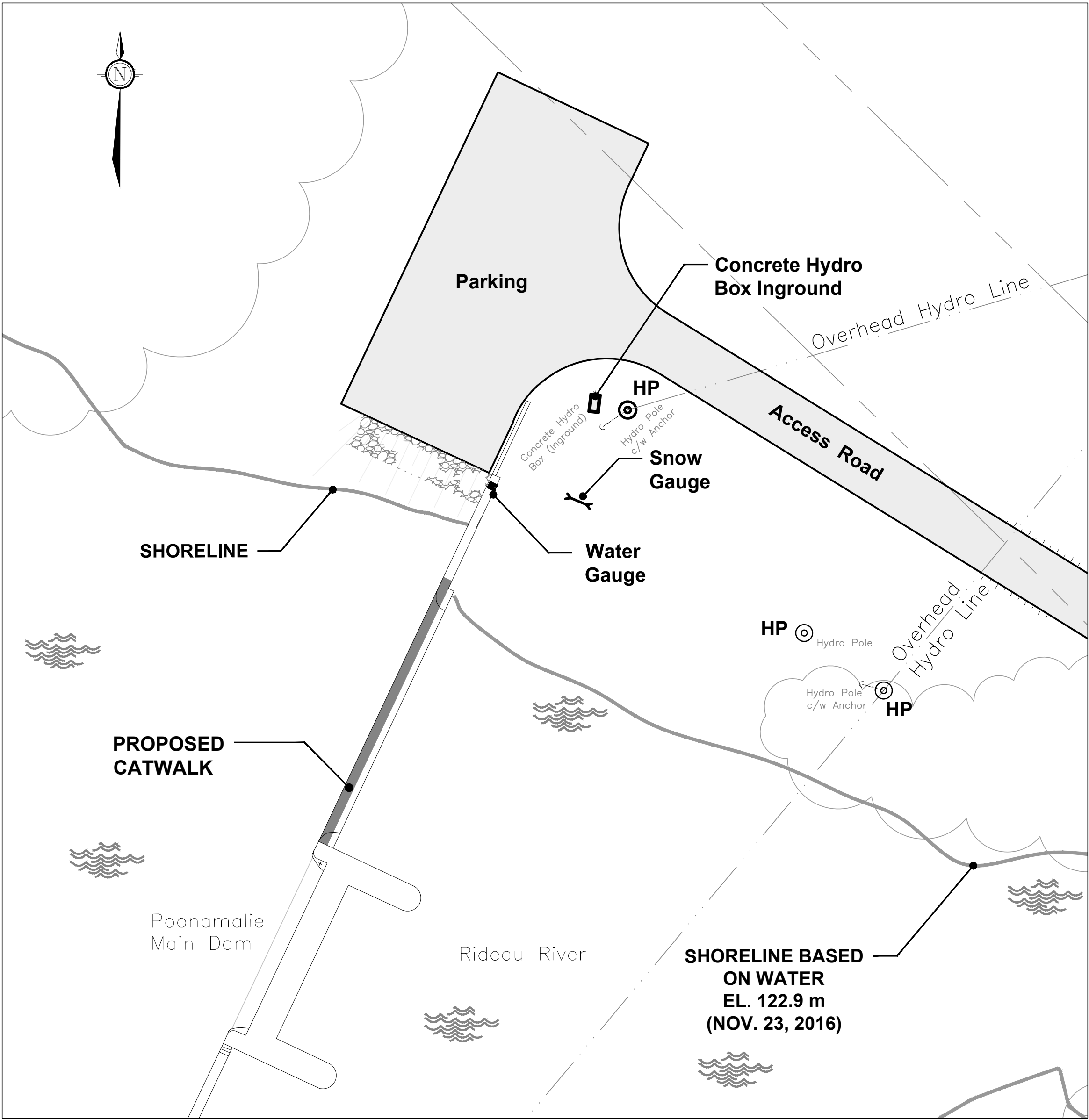
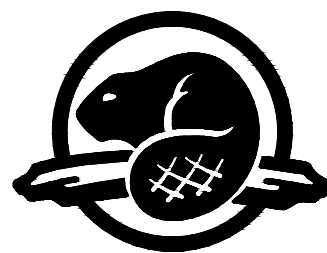


Ontario Region
Parks Canada Infrastructure Directorate
Heritage Canals and Engineering Works

Région de l'Ontario
Direction de l'infrastructure de Parcs Canada
Canaux historiques et travaux d'ingénierie



Parks Canada



NOTES :

ELEVATIONS SHOWN HEREON ARE GEODETIC AND ARE DERIVED FROM GEODETIC SURVEYS OF CANADA BENCHMARK No 48U618G HAVING AN ELEVATION OF 124.287 m (CGVD—1928:1978).

THE BENCHMARK IS ON CANAL CUT INLET DAM, 4.0 km UPSTREAM FROM POST OFFICE, 900 m UPSTREAM FROM POONAMALIE LOCK 32, TABLET IN TOP OF CONCRETE BASE OF BULKHEAD ON RIVER SIDE OF CANAL CUT, 24.2 m UPSTREAM FROM SOUTHEAST END OF MAIN DAM, 70 cm FROM CANAL EDGE, 30 cm NORTHEAST OF STOP LOG SLOT.

THE LEGAL SURVEY INFORMATION SHOWN ON THIS PLAN ARE FOR ILLUSTRATION ONLY. MORE DETAILED LEGAL SURVEY INFORMATION CAN BE OBTAINED BY CONSULTING THE APPROPRIATE DOCUMENTS.

THE LOCATION OF UTILITIES ON THIS PLAN HAVE BEEN VERIFIED WHERE POSSIBLE. HOWEVER THE RESPONSIBLE AGENCIES SHOULD BE CONTACTED FOR VERIFICATION PRIOR TO CONSTRUCTION.

PLAN COMPILED FROM FIELD SURVEY, AUGUST, 2017 AND CLSR PLAN 75497 (27R—5710) AND REGISTERED PLAN 27—1044.

SITE PLAN
N.T.S.

RIDEAU CANAL - POONAMALIE DAM PHASE III CATWALK

LIST OF DRAWINGS

- 100 COVER PAGE AND SITE AND LOCATION PLAN
- 101 PLAN, ELEVATION SECTIONS AND DETAILS
- 102 CATWALK DETAILS 1
- 103 CATWALK DETAILS 2

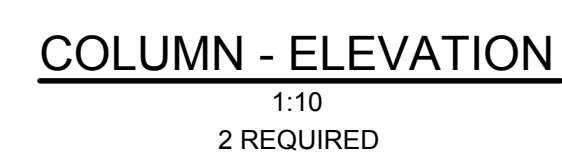


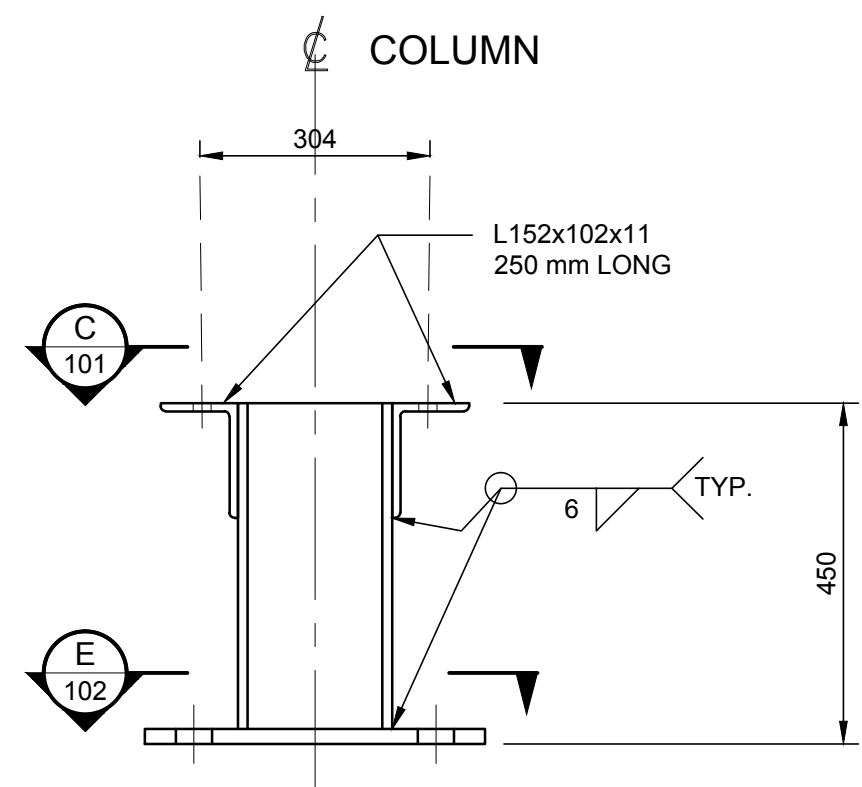
LOCATION PLAN

ISSUED FOR TENDER
2019-07-31



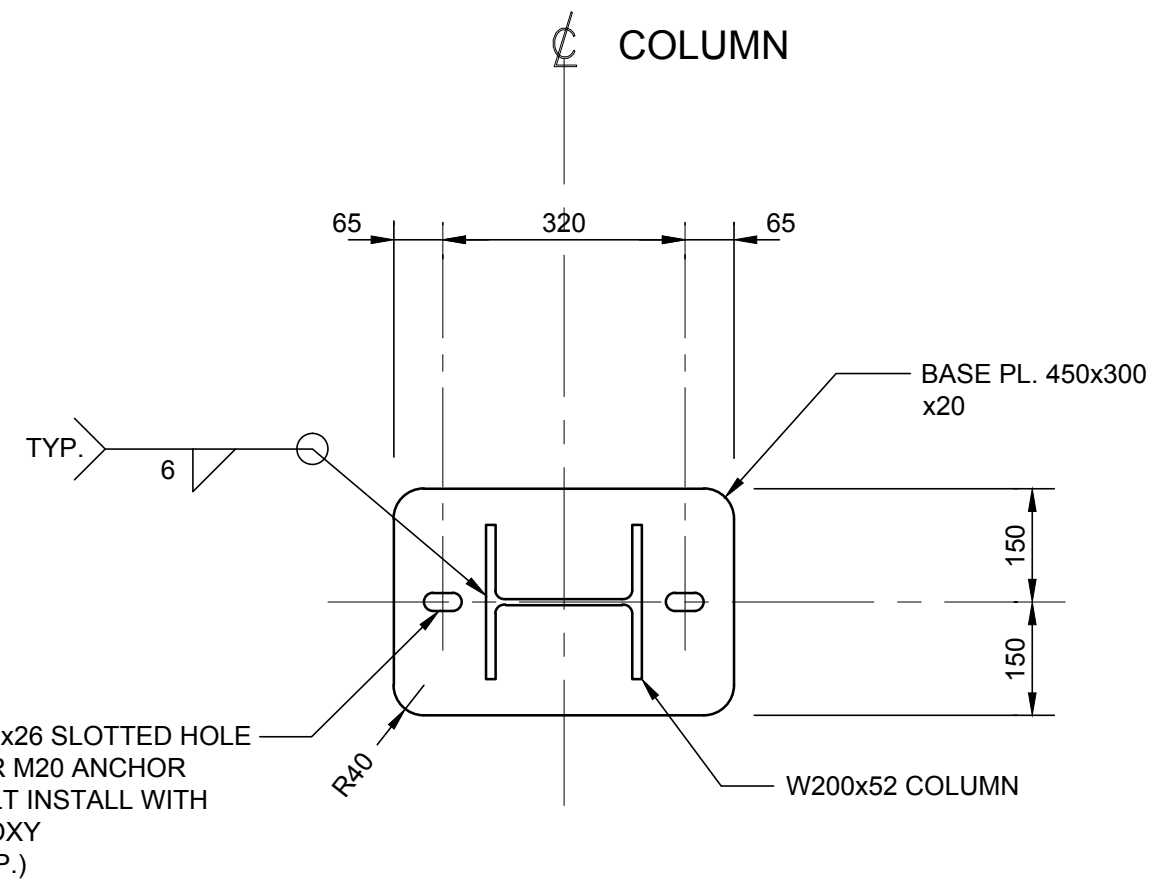
PSPC PROJECT NUMBER
R.066861.319



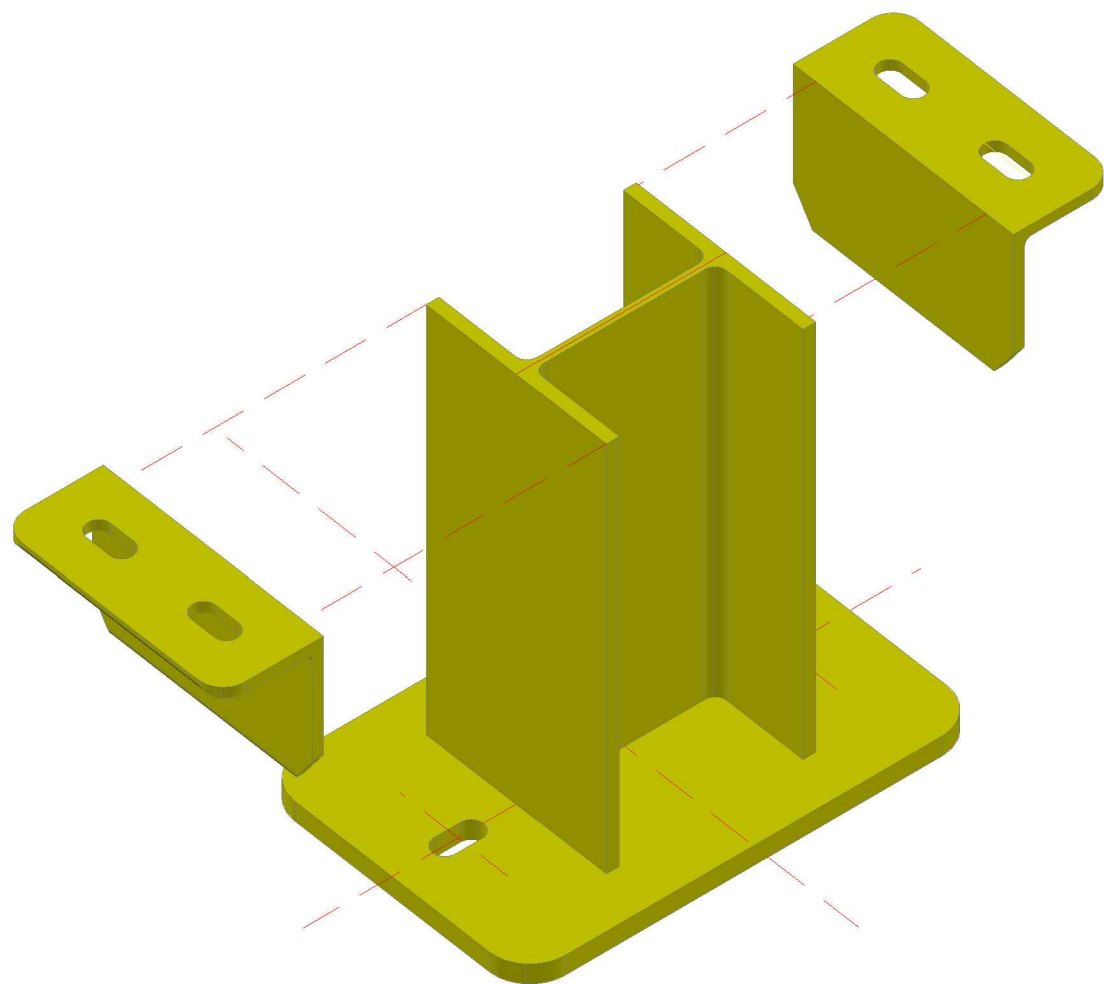


COLUMN - ELEVATION

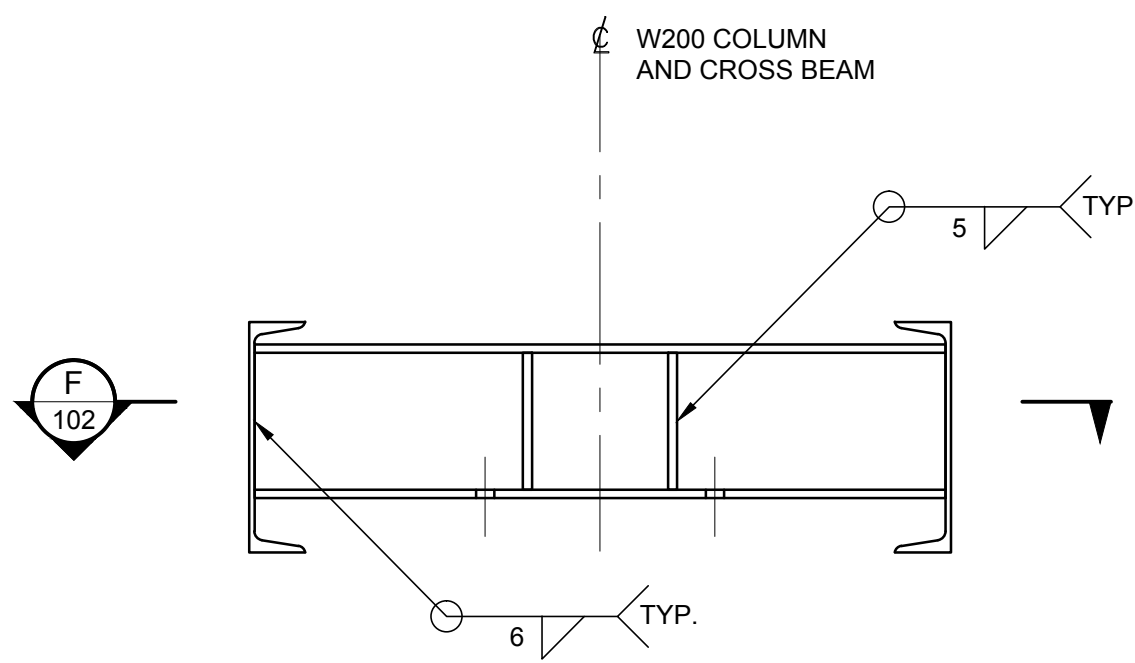
1:10
2 REQUIRED



SECTION E
1:10

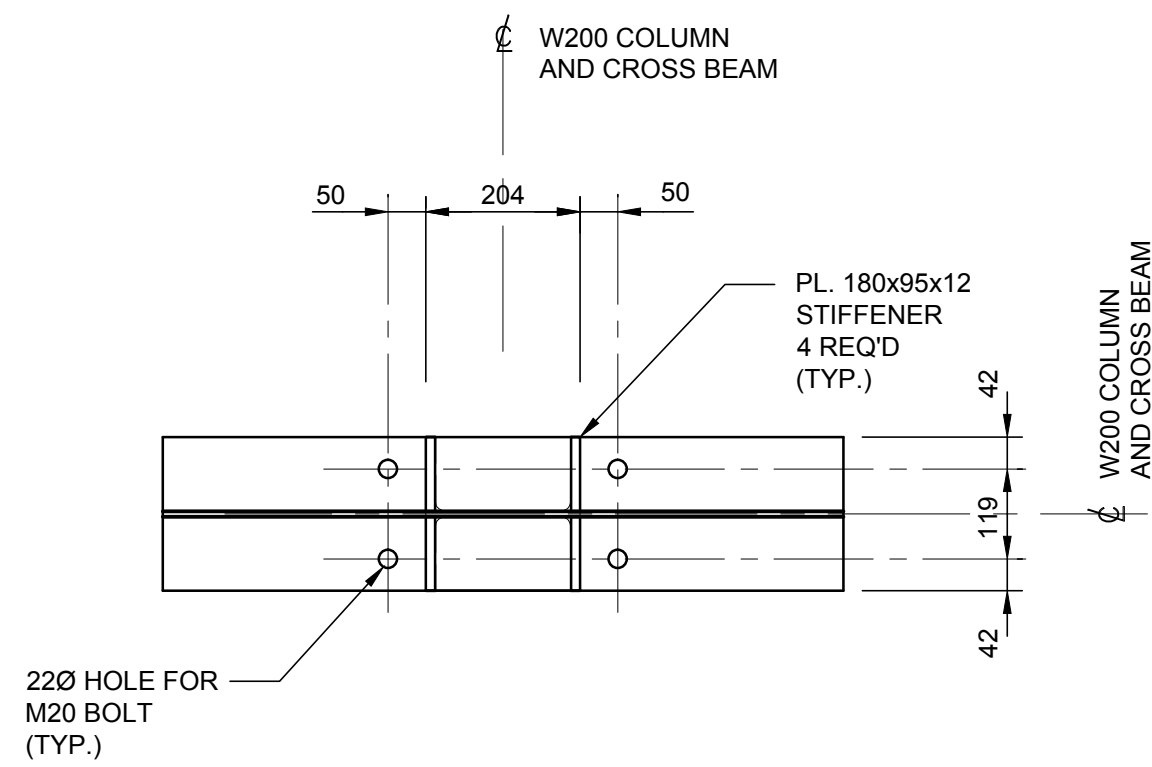


SHORT COLUMN BOTH ENDS OF CATWALK
N.T.S.

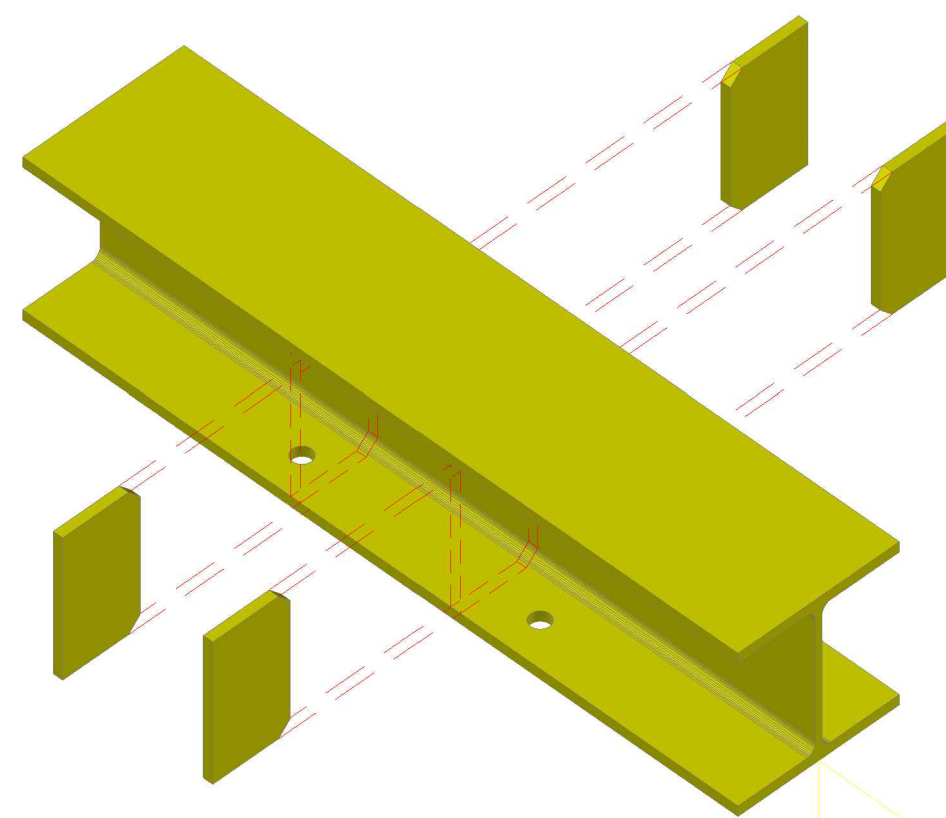


CROSS BEAM - ELEVATION

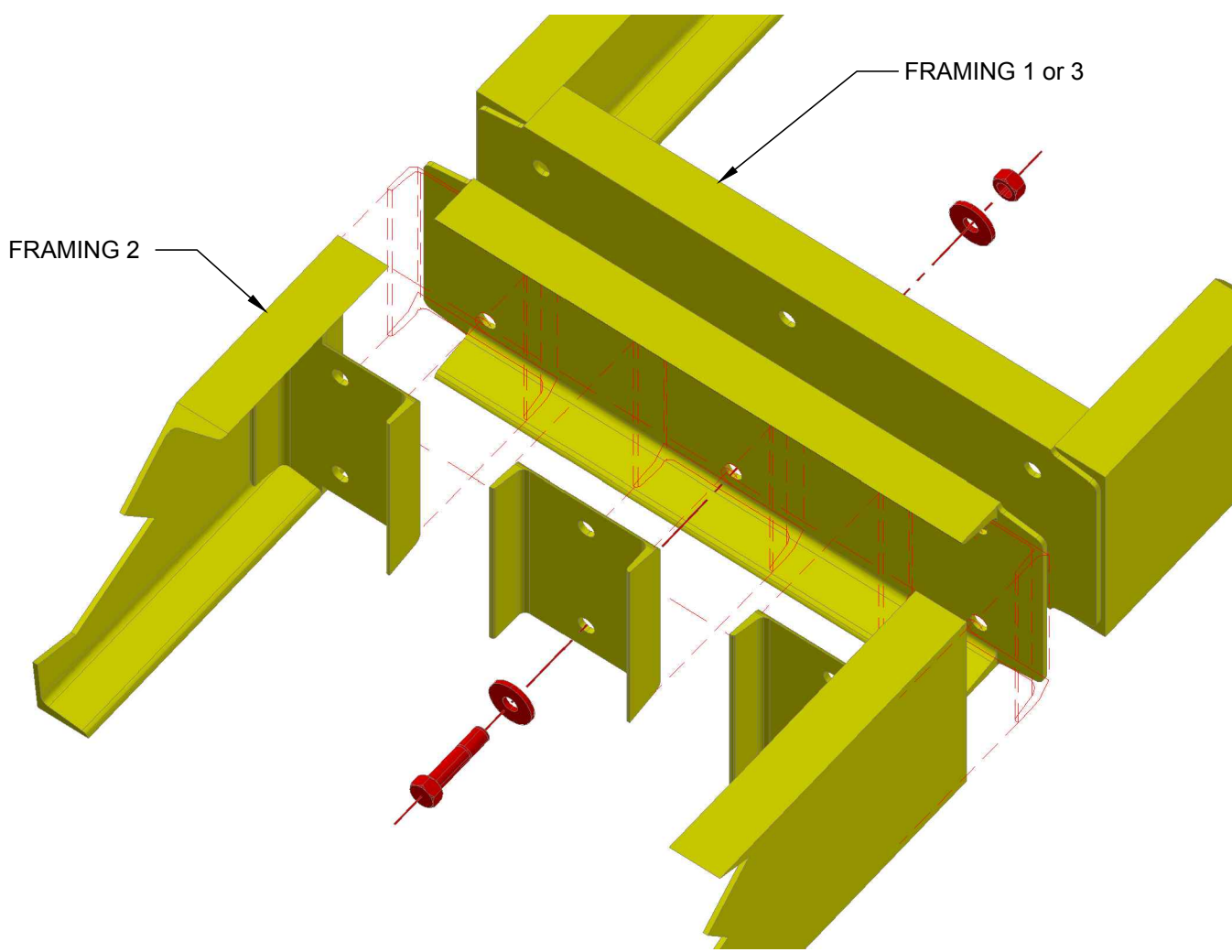
1:10



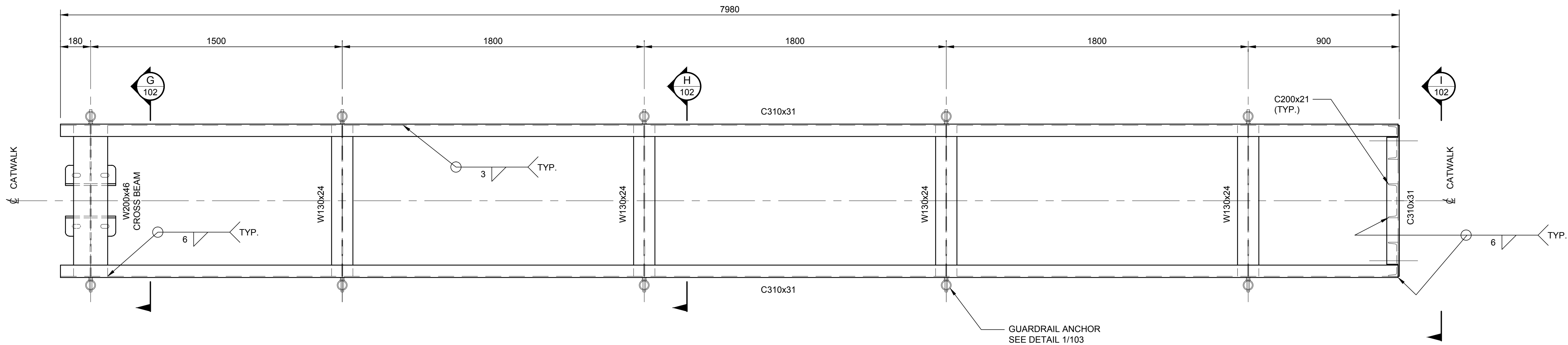
CROSS BEAM - SECTION F
1:10



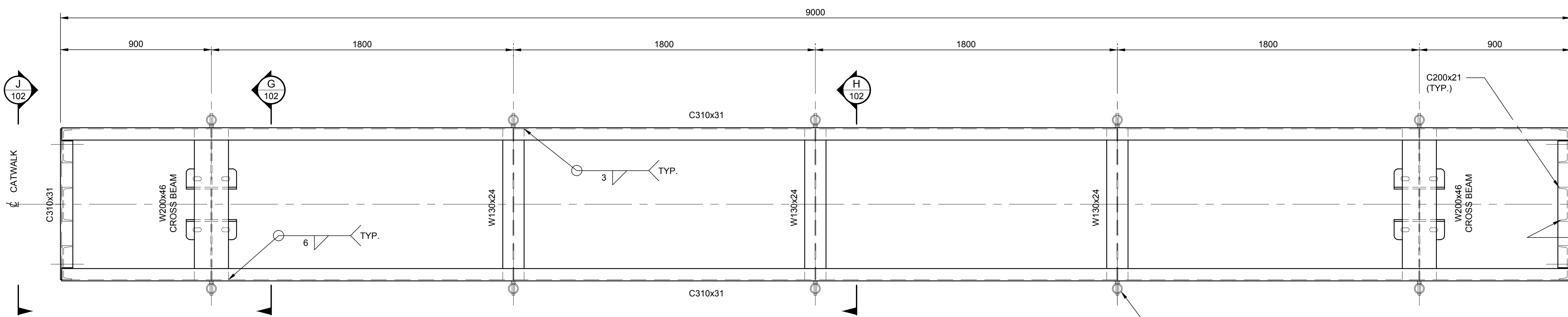
W200x46 BEAM ASSEMBLY PARTS
N.T.S.



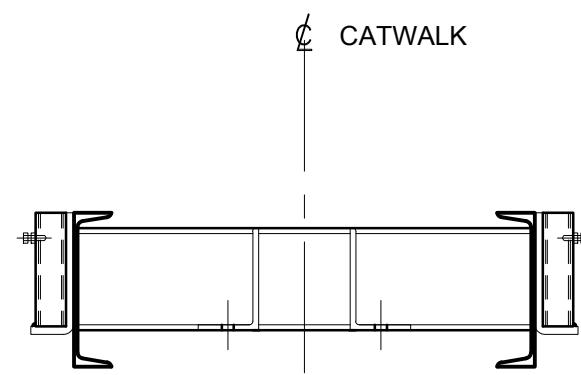
FRAMING 1, 2 & 3 SPLICE - DETAIL
N.T.S.



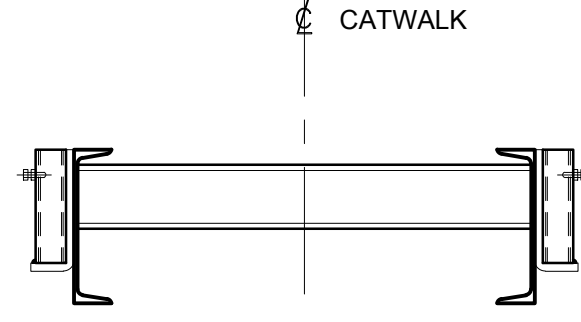
FRAMING 1 & 3 - PLAN
1:15
1 OF EACH REQ'D



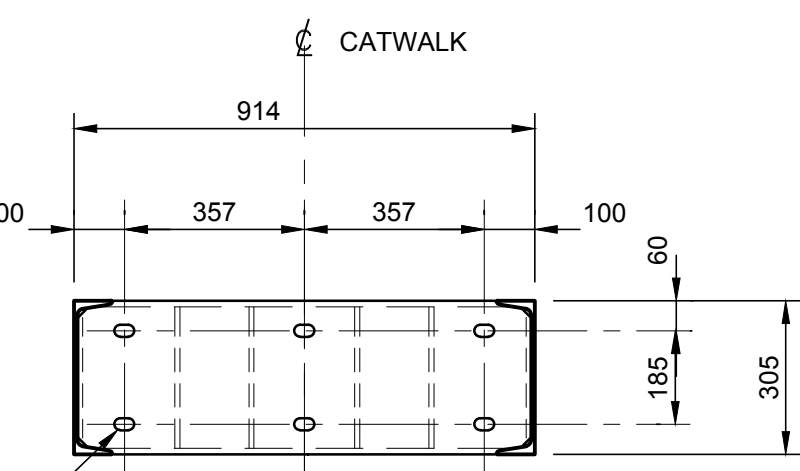
FRAMING 2 - PLAN
1:15
1 REQ'D



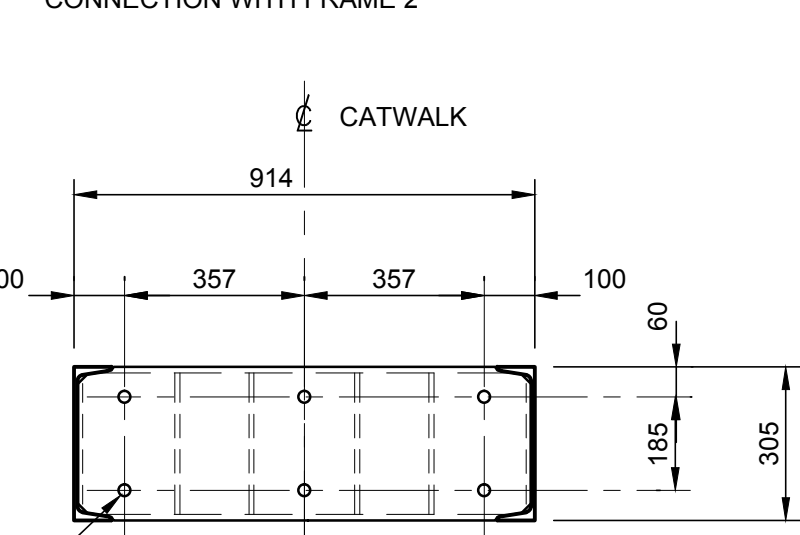
SECTION G
1:15



SECTION H
1:15



SECTION I
1:15



SECTION J
1:15

- NOTES:
- STEEL COMPONENTS (COLUMNS AND FRAMES) TO BE HOT-DIP GALVANIZED TO ASTM A123/123M.
 - BOLTS ON STEEL COMPONENTS TO BE GALVANIZED TO ASTM F3125 GRADE A325.

No.	Description	Drawn By / Dessiné par	Date
1.	ISSUED FOR TENDER	H.C.	12-06-2019

Revision / Révision

Do not scale drawings.
Verify all dimensions and conditions on site and immediately notify the
Departmental Representative of all discrepancies.

A	A Detail number Numéro du détail
B	B Location dwg. number Numéro sur dessin

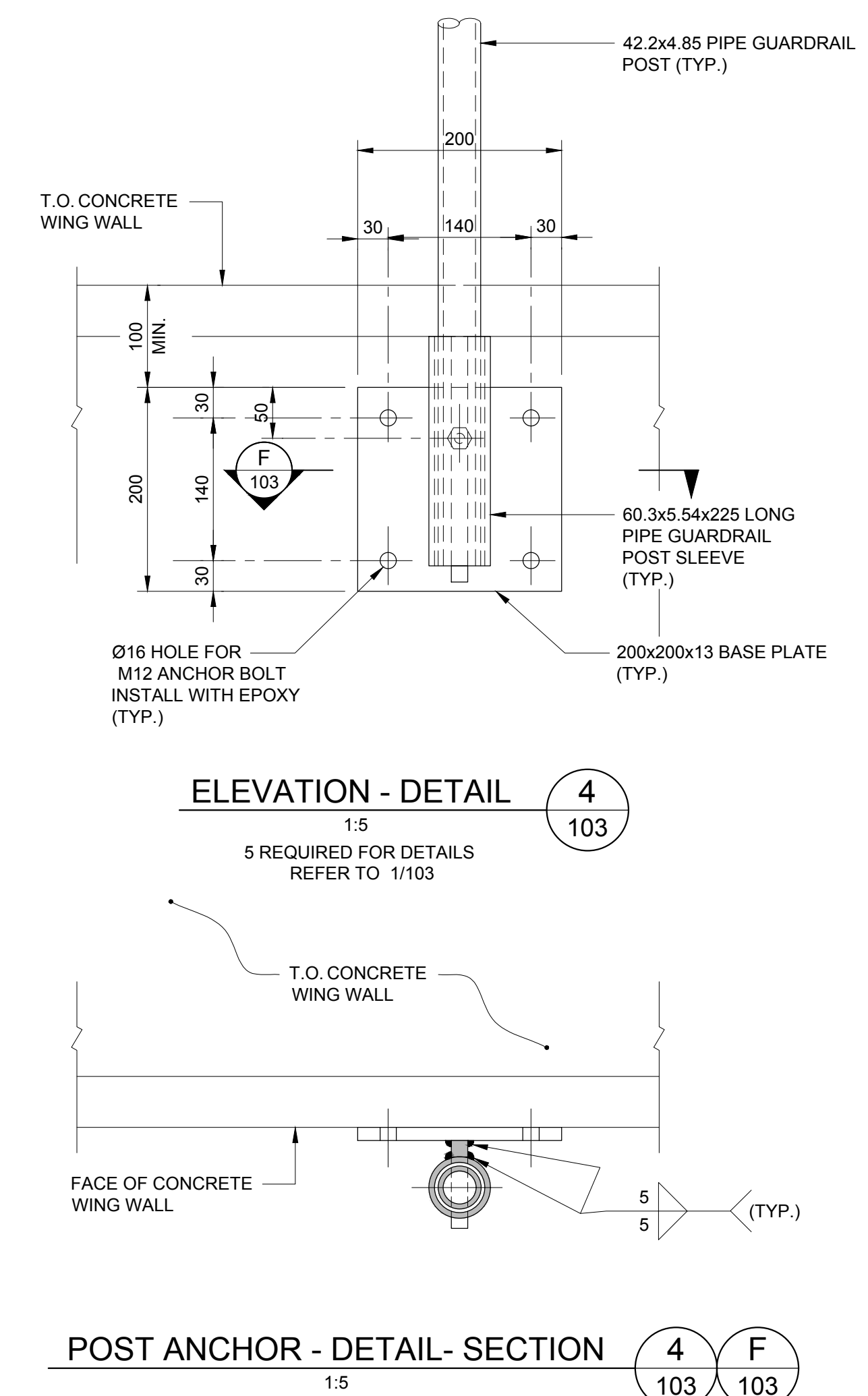
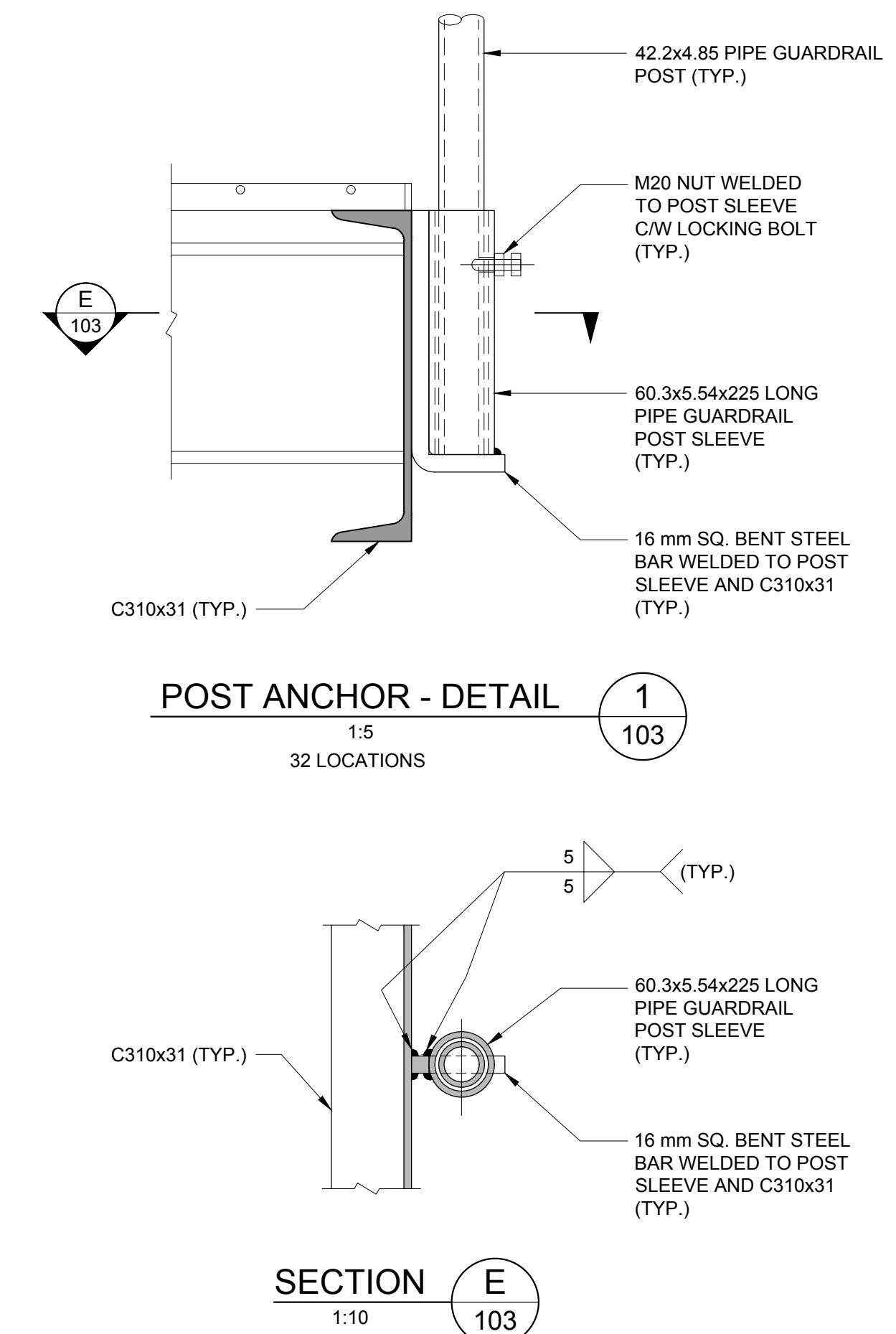
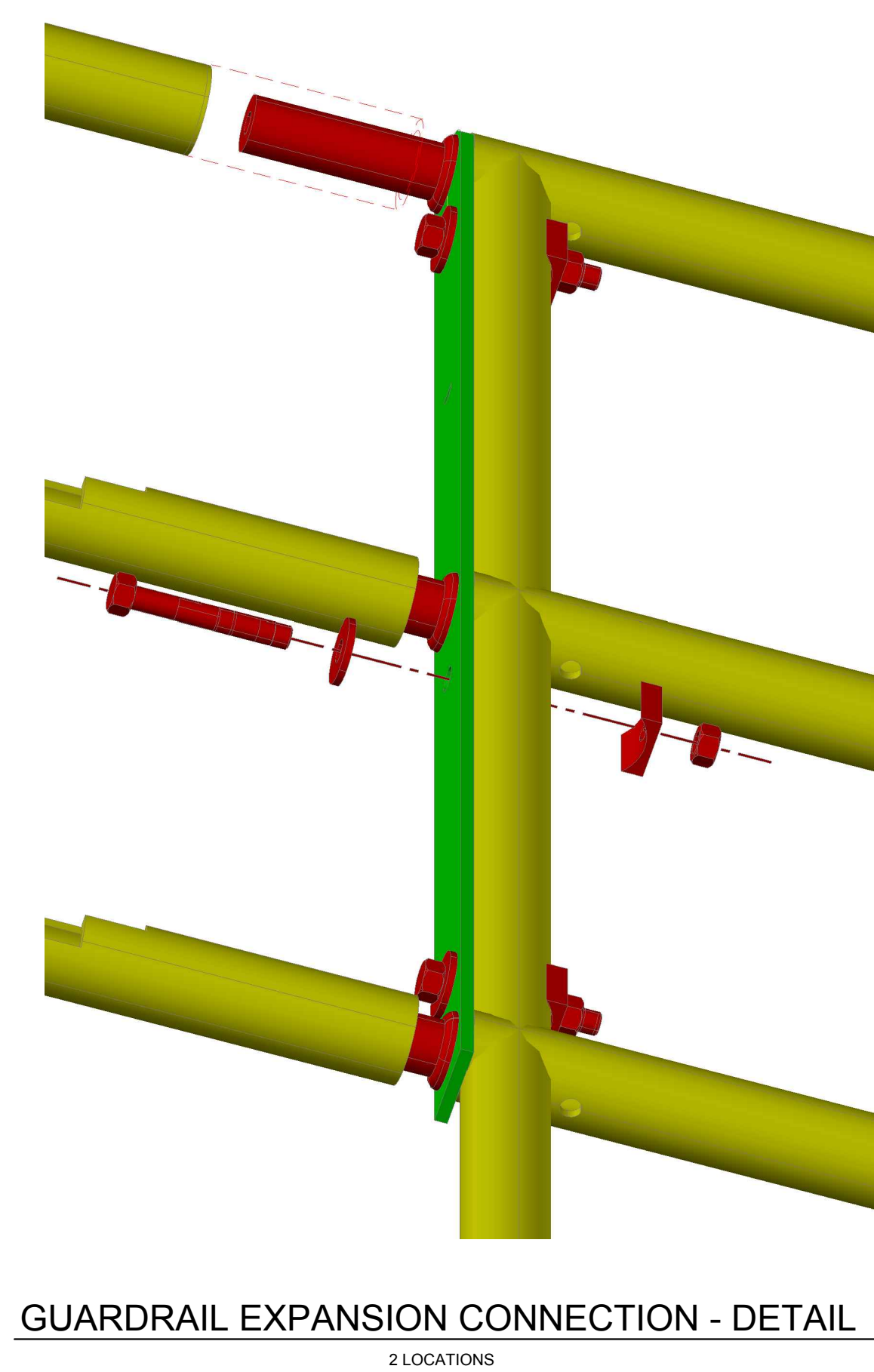
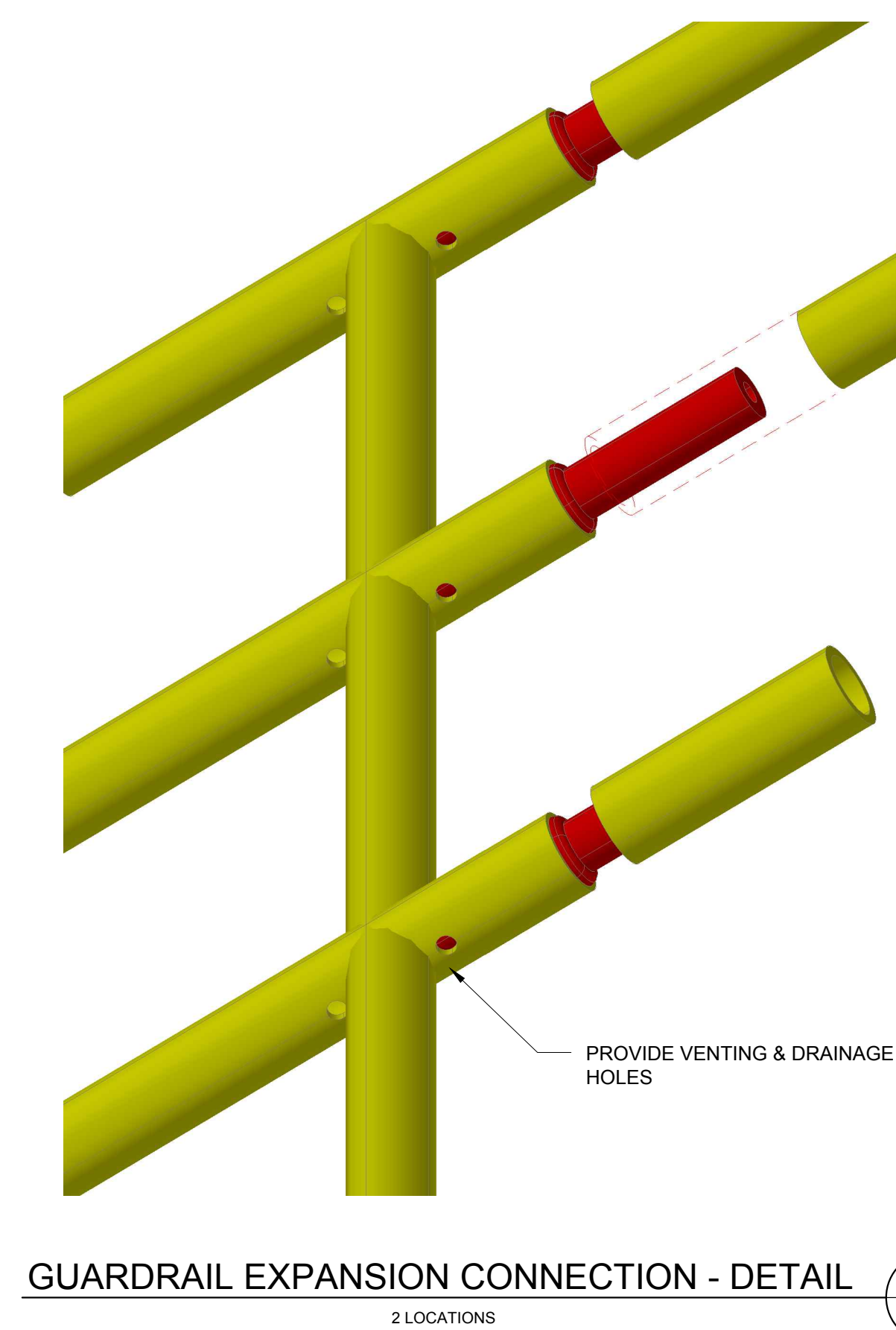
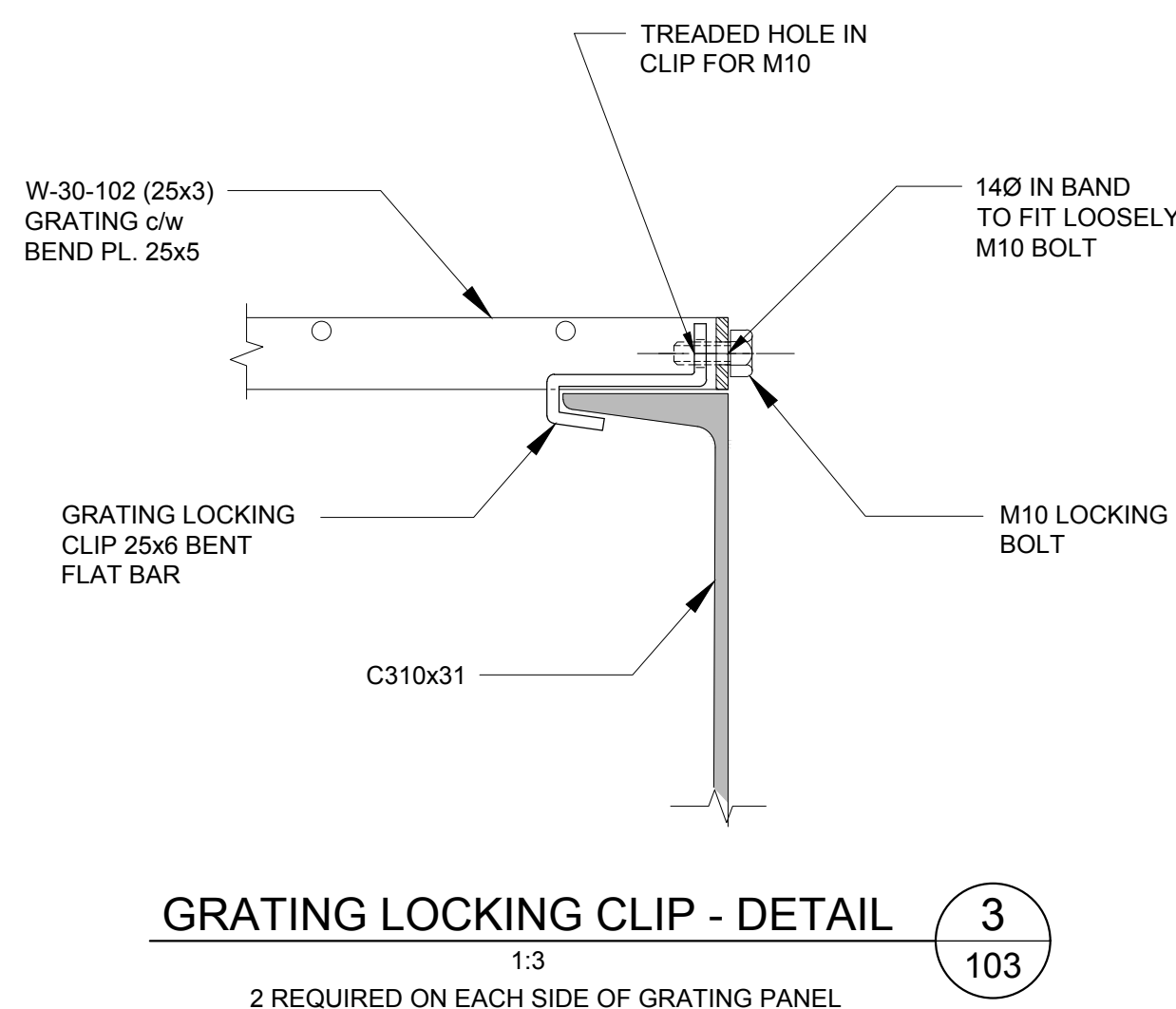
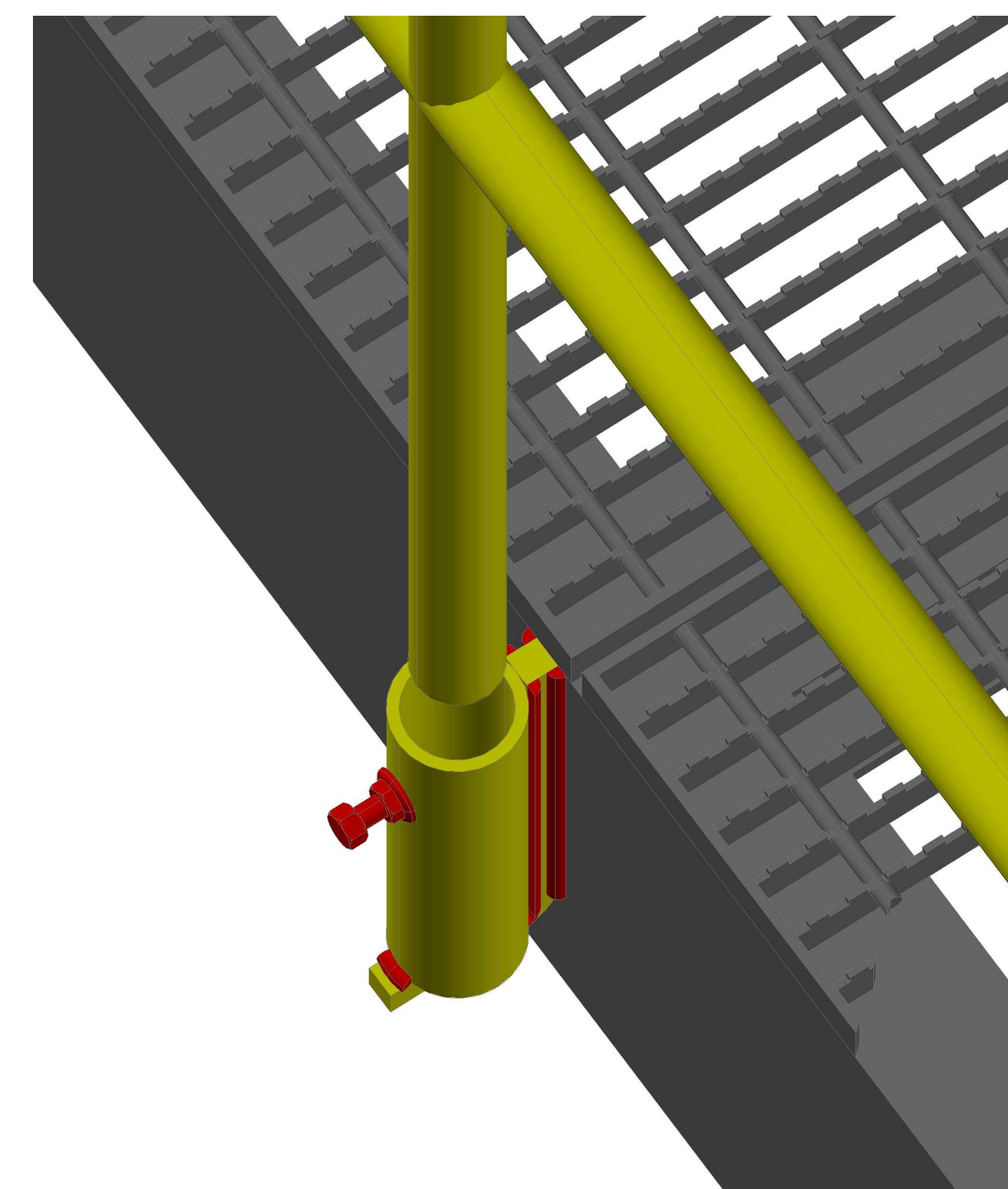
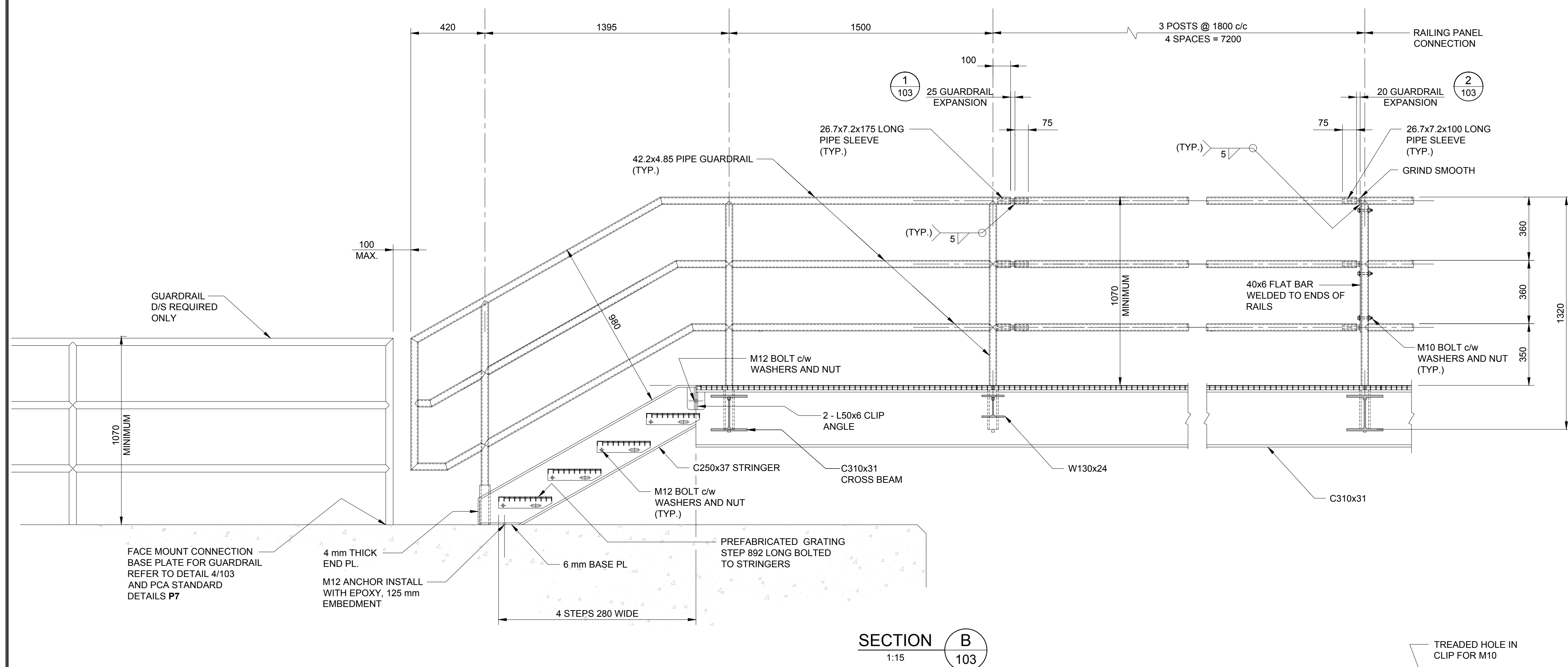
Project title / Titre du projet

POONAMALIE DAM
PHASE III
CATWALK

Drawing title / Titre du dessin

CATWALK DETAILS 1

Drawn by / Dessiné par HENRYK CHRZANOWSKI	Designed by / Conçu par THUC VAN QUAN E.I.T. LUC BÉRIEULT P.Eng.
Approved by / Approuvé par LUC BÉRIEULT, P.Eng.	Drawing Date / Date du dessin MARCH 2019
Project manager / Administrateur de projet PIERRE GRAMBART	Drawing Number / Numéro du Dessin 102
Project Number / Numéro du projet R.066861.319	Sheet Feuille 3 of 4




NOTES:

1. GUARDRAIL AND GUARDRAIL POSTS
TO BE POWDER COATED BLACK.
2. BOLTS, WASHERS & NUTS ON GUARDRAIL
EXPANSION CONNECTION TO BE STAINLESS STEEL.

1.	ISSUED FOR TENDER	H.C.	12-06-2019
No.	Description	Own By Des. Par	Date

Do not scale drawings.
Verify all dimensions and conditions on site and immediately notify the
Departmental Representative of all discrepancies.



A Detail number
Numéro du détail

B Location dwg. number
Numéro sur dessin

Project title / Titre du projet

POONAMALIE DAM
PHASE III
CATWALK

Drawing title / Titre du dessin

CATWALK DETAILS 2

Drawn by / Dessiné par	Designed by / Conçu par
HENRYK CHRZANOWSKI	THUC VAN QUAN E.I.T. LUC BÉRIAULT P.Eng.
Approved by / Approuvé par	Drawing Date / Date du dessin
LUC BÉRIAULT, P.Eng.	APRIL 2019
Project manager / Administrateur de projet	Drawing Number / Numéro du Dessin
PIERRE GRAMBERT	103
Project Number / Numéro du projet	Sheet Feuille
R.068661.319	4 of 4