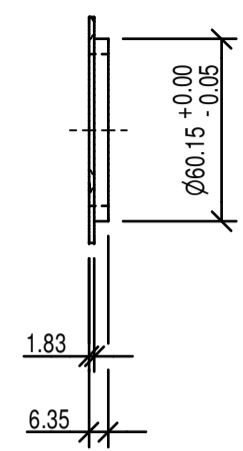
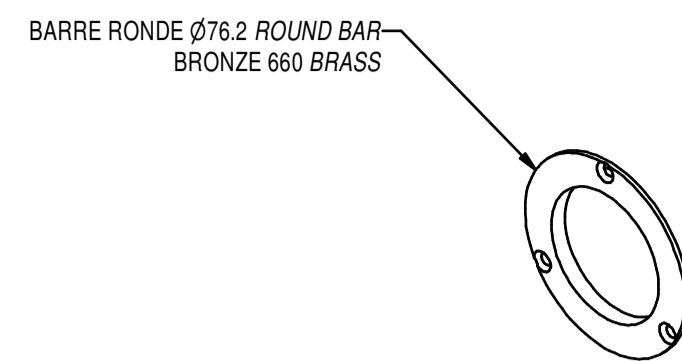


ÉLÉVATION - ELEVATION

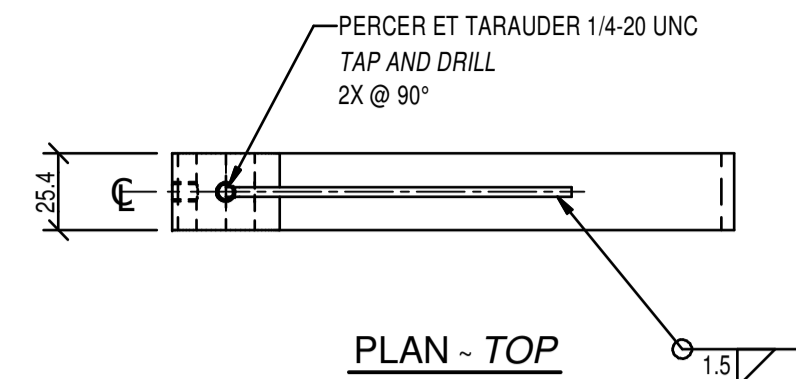


PROFIL - PROFILE

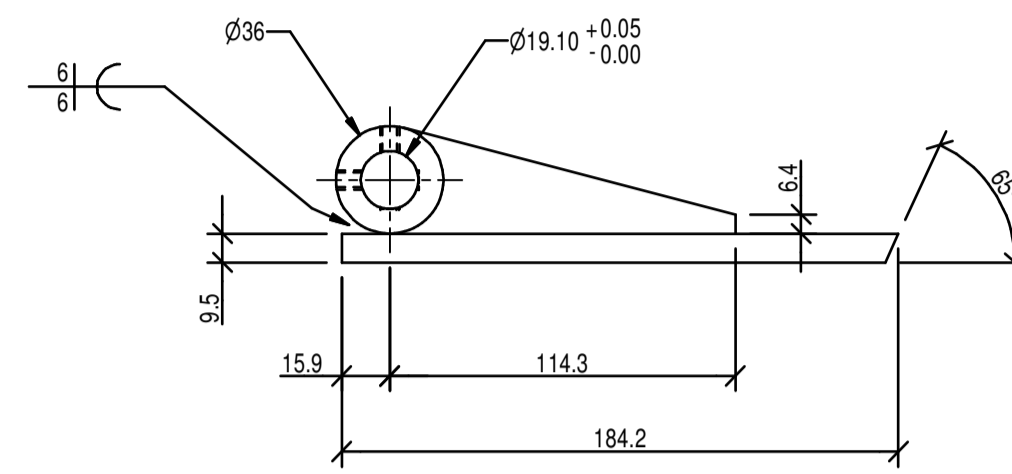
COUSSINET (2M)
BUSHING (05 13)
ÉCH. - SCALE 1: 2.5



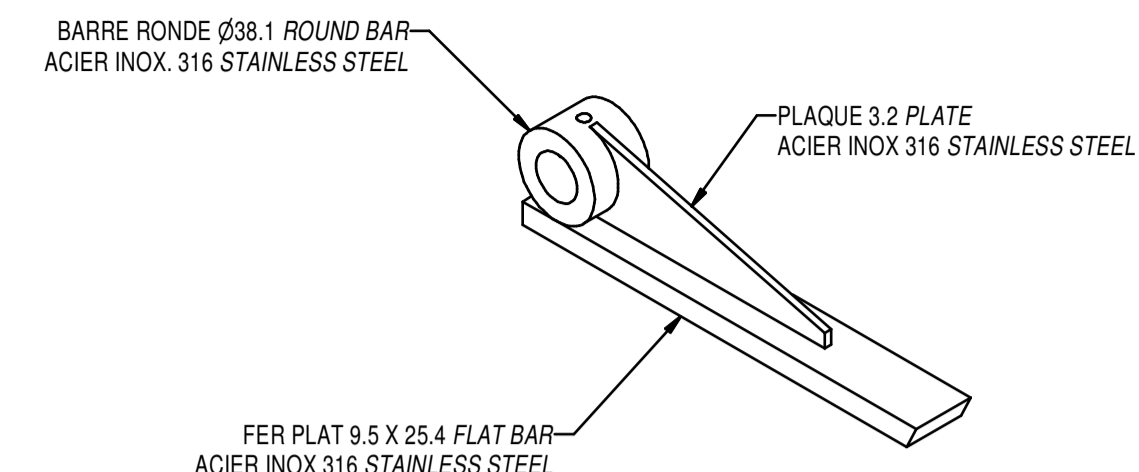
BARRE RONDE Ø76.2 ROUND BAR
BRONZE 660 BRASS



PLAN - TOP

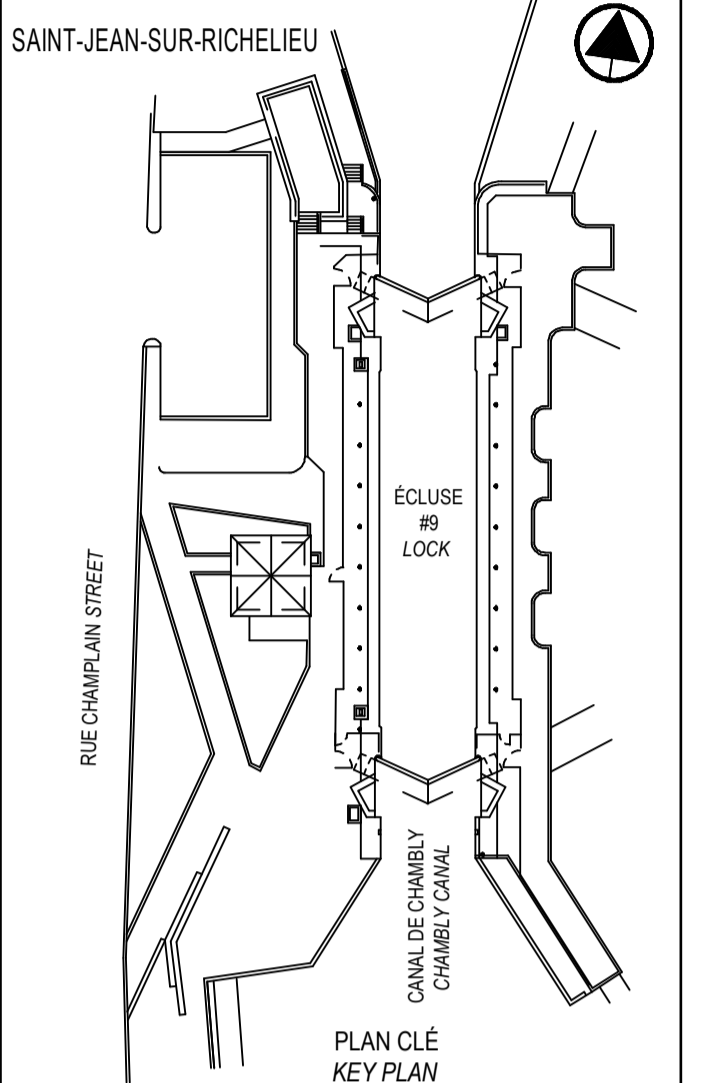


ÉLÉVATION - ELEVATION

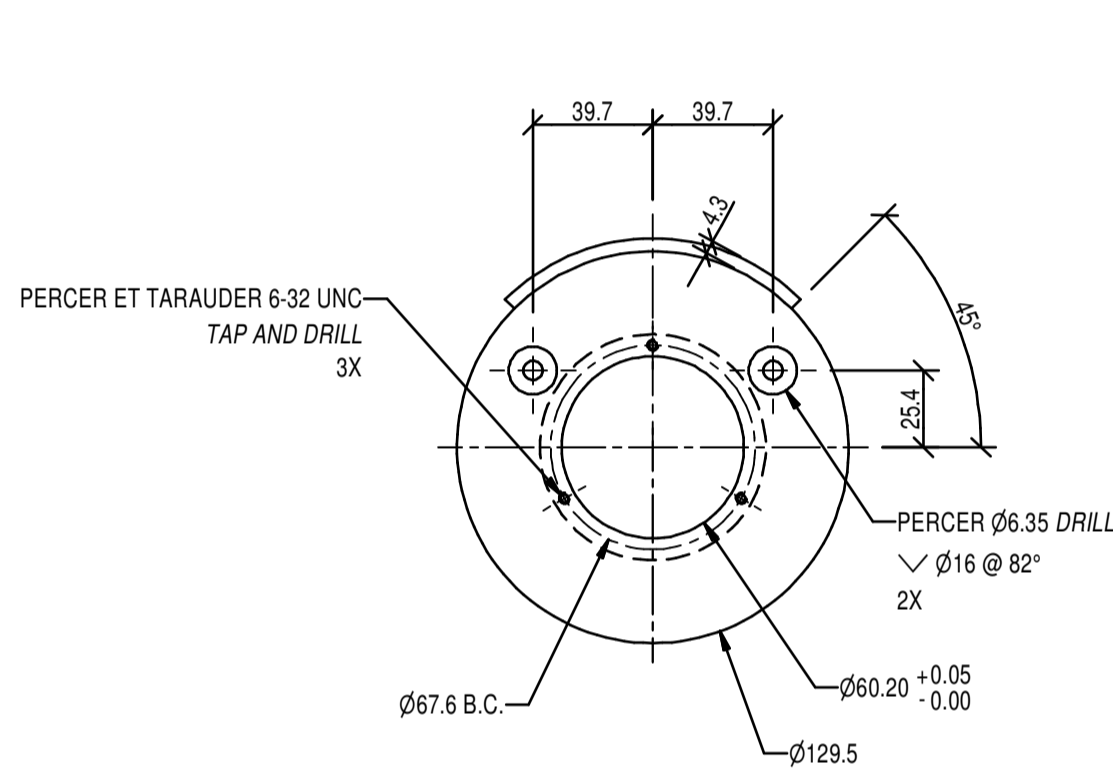


FER PLAT 9.5 X 25.4 FLAT BAR
ACIER INOX 316 STAINLESS STEEL

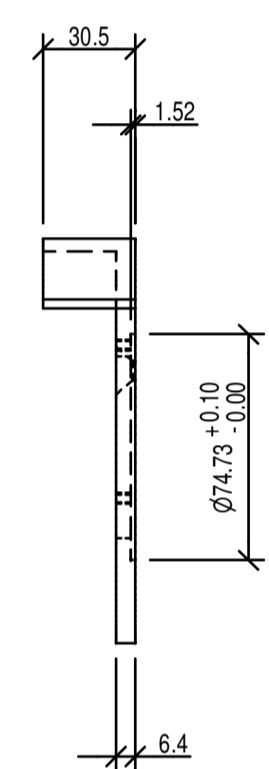
CLIQUET (5K)
RATCHET (06 13)
ÉCH. - SCALE 1: 2.5



PLAN CLÉ
KEY PLAN



ÉLÉVATION - ELEVATION

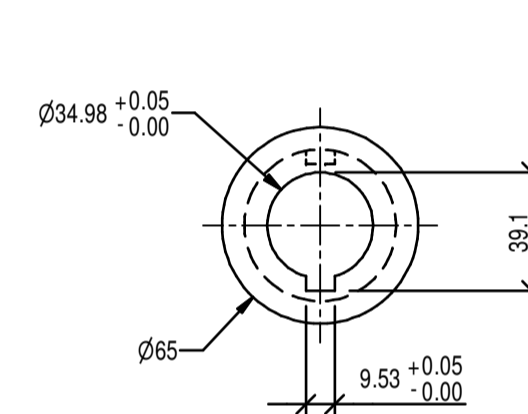


PROFIL - PROFILE

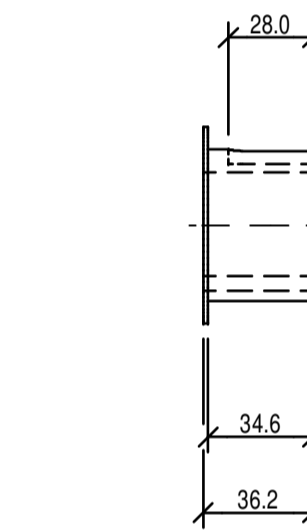
PROTECTEUR ROUE À CLIQUET (2E)
RATCHET WHEEL PROTECTOR (05 13)
ÉCH. - SCALE 1: 2.5



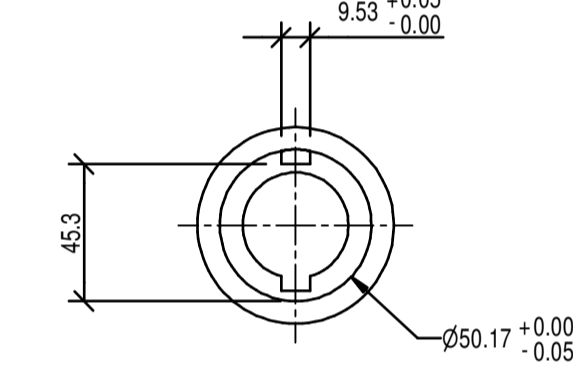
BARRE RONDE Ø140 ROUND BAR
C-1045
PLAQUER ZINC ET PEINTURER NOIR
SELON DEVIS
PLATE ZINC AND PAINT BLACK
AS SPECIFICATION



PROFIL - PROFILE

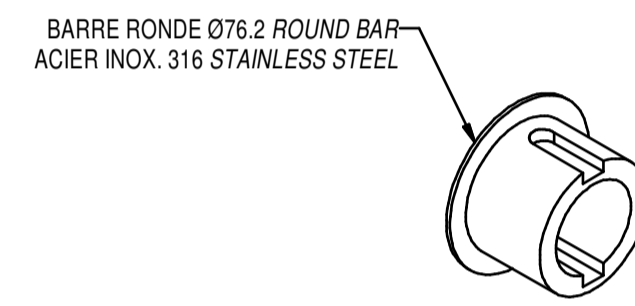


ÉLÉVATION - ELEVATION

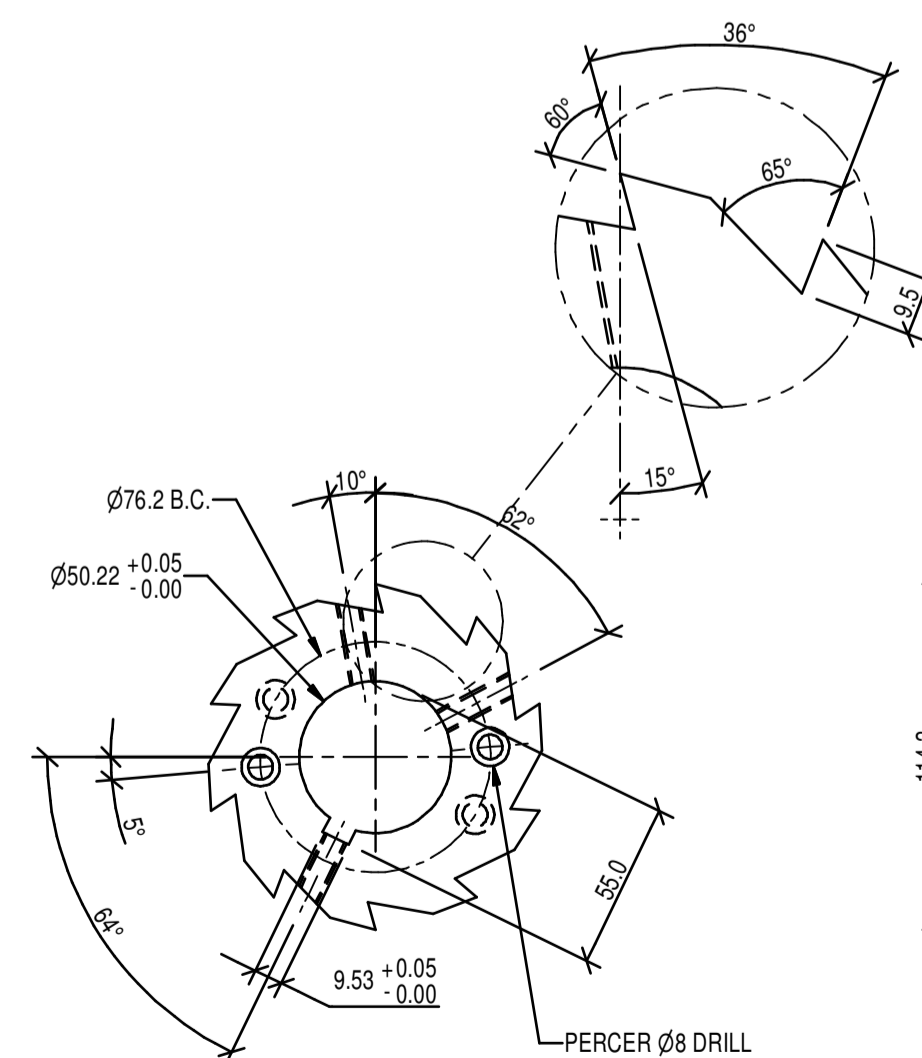


PROFIL - PROFILE

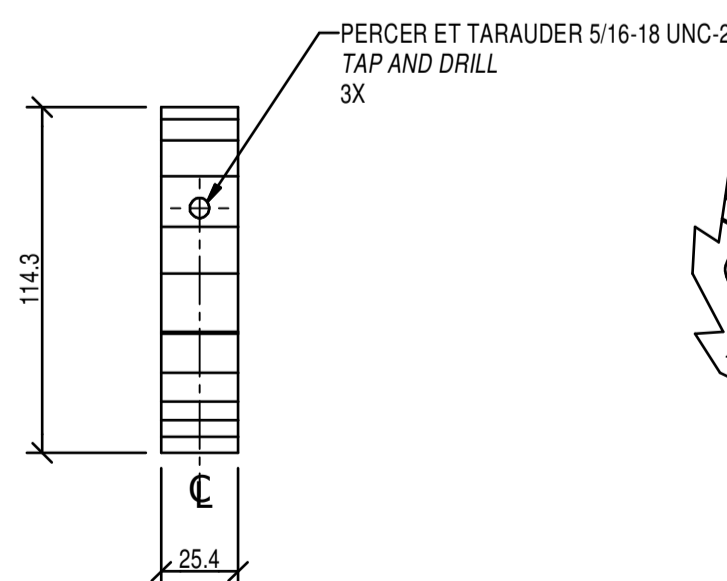
MANCHON (2L)
BUSHING (05 13)
ÉCH. - SCALE 1: 2.5



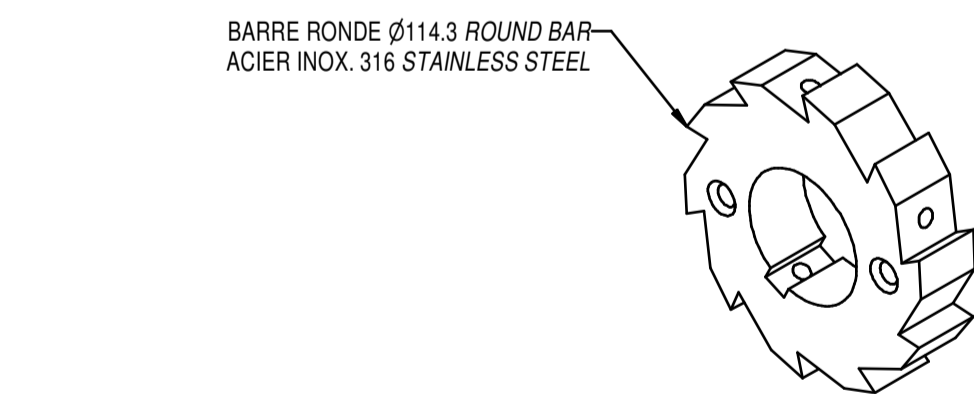
BARRE RONDE Ø76.2 ROUND BAR
ACIER INOX 316 STAINLESS STEEL



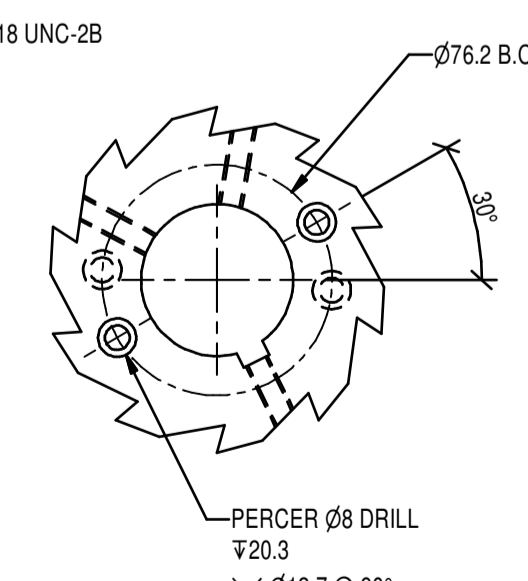
ÉLÉVATION - ELEVATION



PROFIL - PROFILE

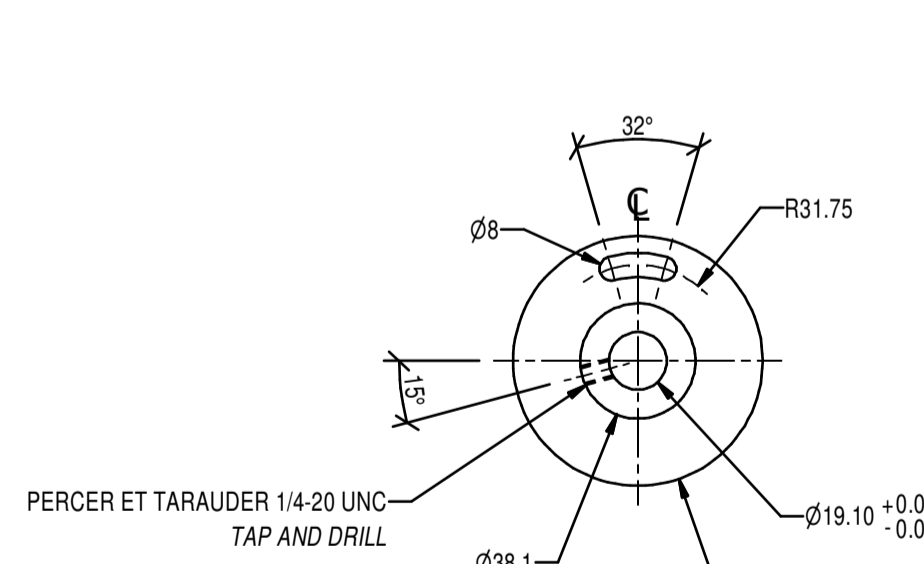


BARRE RONDE Ø114.3 ROUND BAR
ACIER INOX 316 STAINLESS STEEL

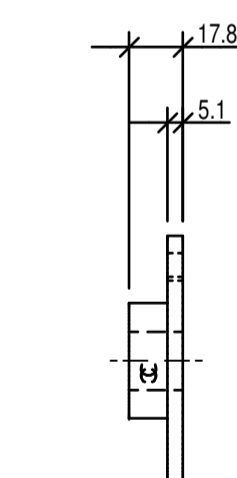


ÉLÉVATION - ELEVATION

ROUE À CLIQUET (2H)
RATCHET WHEEL (05 13)
ÉCH. - SCALE 1: 2.5

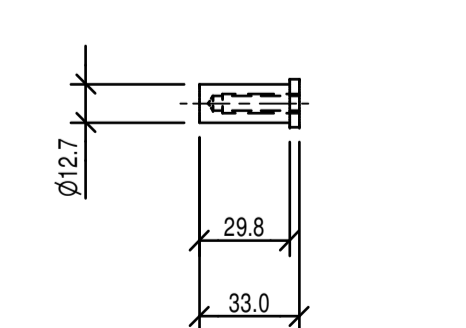


ÉLÉVATION - ELEVATION

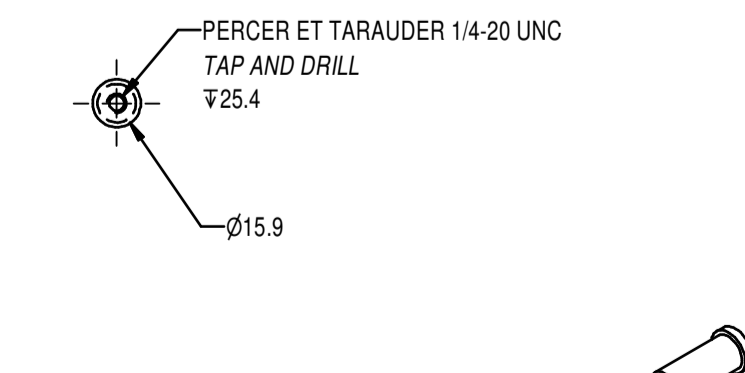


PROFIL - PROFILE

ROUE DE BUTEMENT (5F)
BUTTON WHEEL (06 13)
ÉCH. - SCALE 1: 2.5



ÉLÉVATION - ELEVATION



PROFIL - PROFILE

BUTÉE (2K)
THRUST (05 13)
ÉCH. - SCALE 1: 2.5

BARRE RONDE Ø15.9 ROUND BAR
C-1045
PLAQUER ZINC ET PEINTURER NOIR
SELON DEVIS
PLATE ZINC AND PAINT BLACK
AS SPECIFICATION

SOUDEURE TYPIQUE SAUF INDICATION CONTRAIRE
TYPICAL WELDING UNLESS OTHERWISE INDICATED

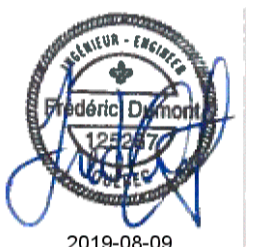
TOLÉRANCES GÉNÉRALES SI NON INDIQUÉES
GENERAL TOLERANCES IF NOT INDICATED

ASSEMBLAGE ~ ASSEMBLY	USINAGE ~ MACHINING
0 A ~ TO 25 ± 1	0.0 ± 1.0
25 A ~ TO 600 ± 1.5	0.00 ± 0.5
600 + ± 3	0.000 ... ± 0.1
ANGLE ± 1°	√ ... 3.2

CE DOCUMENT NE DOIT PAS ÊTRE UTILISÉ À DES FINS DE CONSTRUCTION

THIS DOCUMENT MUST NOT BE USED FOR CONSTRUCTION

SCEAUX SEALS



01	EMIS POUR SOUMISSION ISSUED FOR SUBMISSION	2019-08-07
00	EMIS POUR SOUMISSION ISSUED FOR SUBMISSION	2019-07-23

révisions revisions	date
A	A no du détail detail no
B	B no de la feuille-où détail exigé sheet no - where detail required
C	C no de la feuille-où détaillé sheet no - where detailed

PARCS CANADA
PARKS CANADA
RÉFÉCTION DE L'ÉCLUSE N°9
DU CANAL-DE-CHAMBLY
REPAIR OF LOCK #9
CHAMBLY CANAL

MÉCANIQUE
MECHANICAL

DÉTAILS
MÉCANISME OUVERTURE DES VANNES
DETAIL
GATE OPENING MECHANISM

Conçu par
Frédéric Dumont, ing.

Designed by
2019-05-21

Dessiné par
Jacques Ouellet, techn.

Drawn by
2019-05-21

Approuvé par
Jean-René Tremblay, ing.

Approved by
2019-05-21

Soumission
Nadia Rusztyn, ing. jr

Tender
2019

No de projet
CCHM-1446

Project number
PCA Project Manager

Nom du fichier
RUC-20-212-MC.13.DWG

File name
No de classement

No de plan ou dessin
RUC-20-212-MC.13

File name
No feuillet
Drawing no

13/22