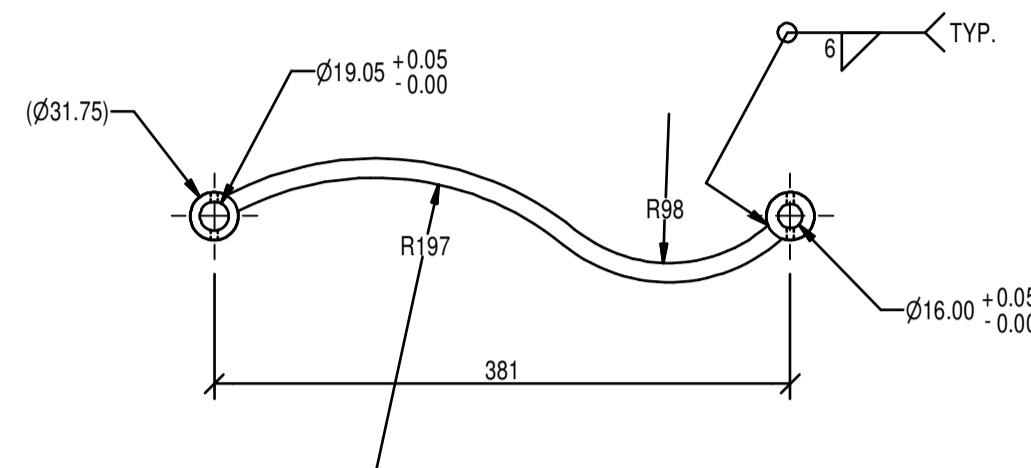
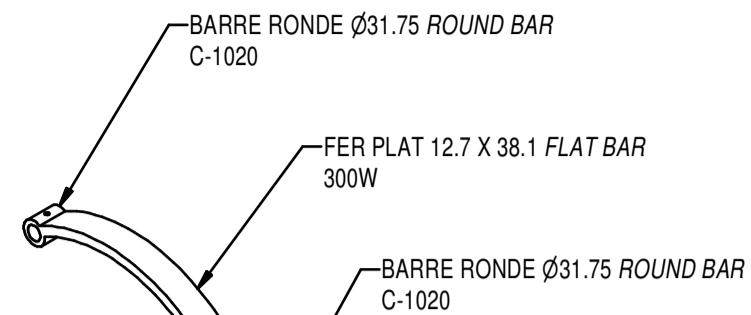


PLAN - TOP



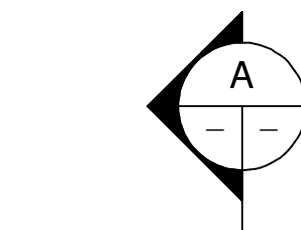
ÉLÉVATION - ELEVATION



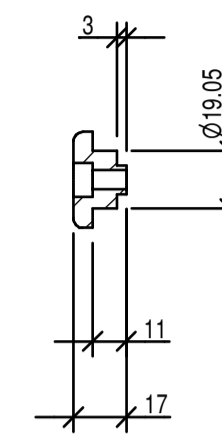
PLAQUER ZINC ET PEINTURER NOIR  
SELON DEVIS  
PLATE ZINC AND PAINT BLACK  
AS SPECIFICATION

MANIVELLE 6A  
CRANK 06 14

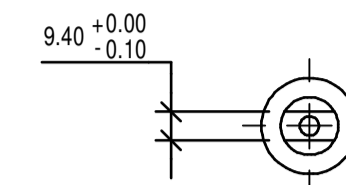
ÉCH.-SCALE 1: 5



ÉLÉVATION - ELEVATION



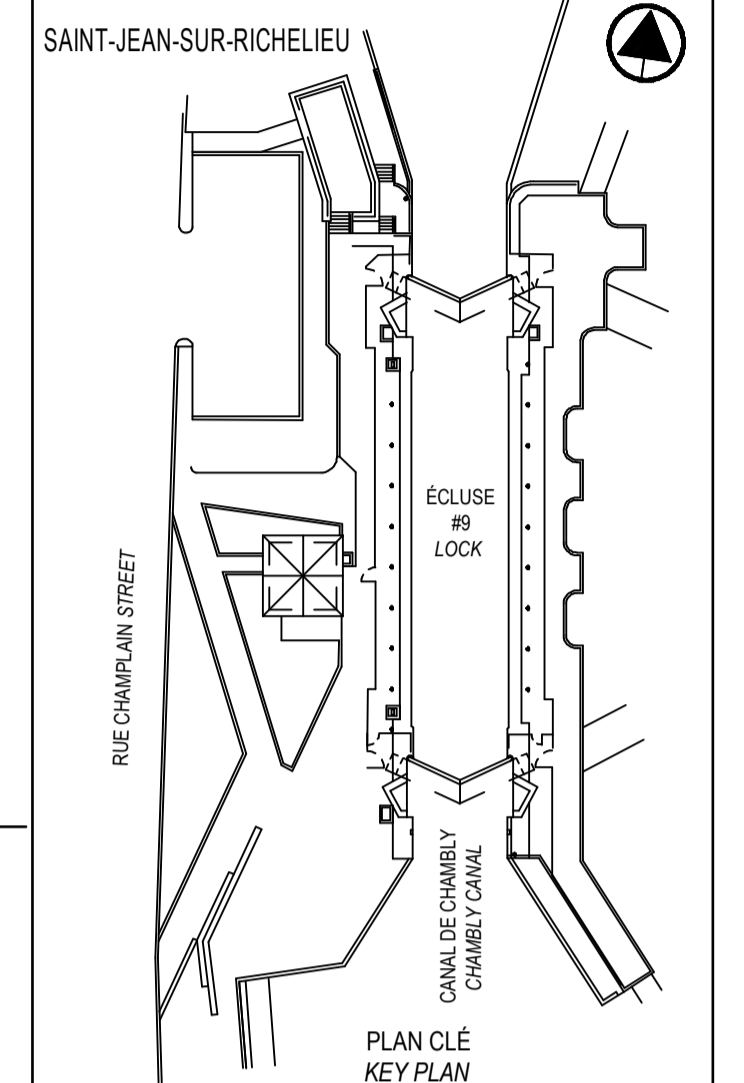
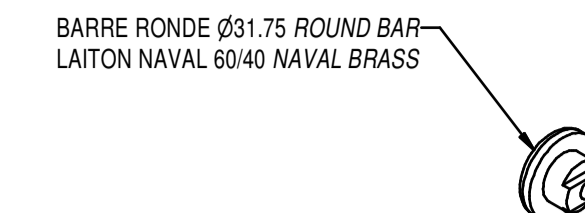
COUPE A-A SECTION



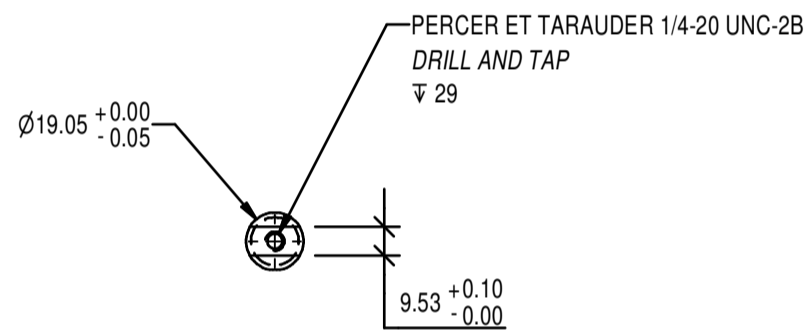
PROFIL - PROFILE

CAPUCHON EXTÉRIEUR 6D  
EXTERIOR CAP 06 14

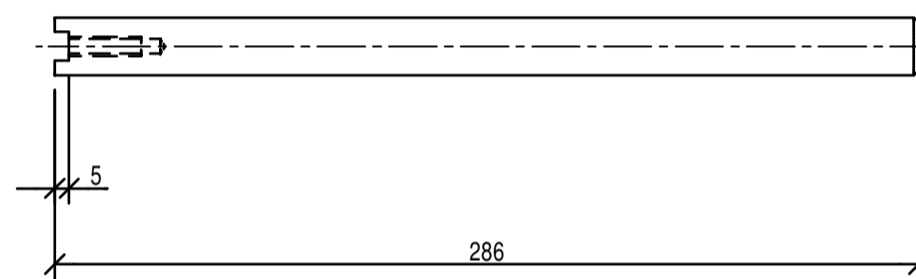
ÉCH.-SCALE 1: 2.5



SCEAUX SEALS



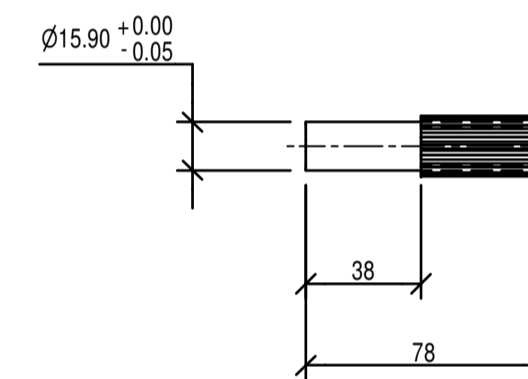
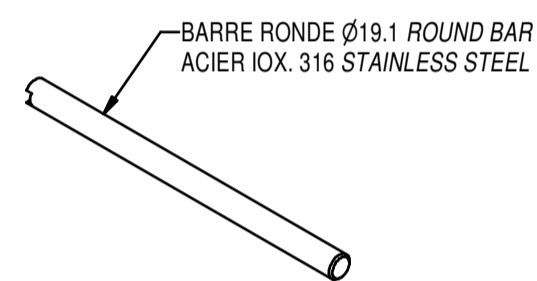
PROFIL - PROFILE



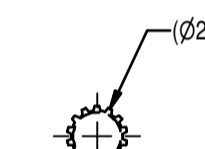
ÉLÉVATION - ELEVATION

ARBRE DE MANIVELLE 6B  
CRANK SHAFT 06 14

ÉCH.-SCALE 1: 2.5



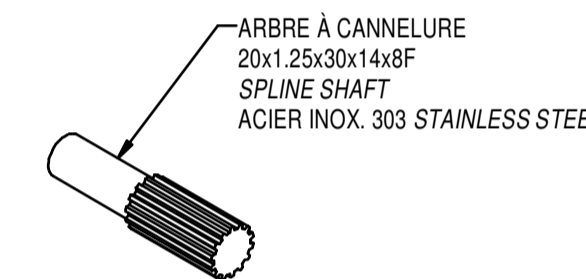
ÉLÉVATION - ELEVATION



PROFIL - PROFILE

ARBRE À CANNELURE 6E  
SPLINE SHAFT 06 14

ÉCH.-SCALE 1: 2.5



01	ÉMIS POUR SOUMISSION ISSUED FOR SUBMISSION	2019-08-07
00	ÉMIS POUR SOUMISSION ISSUED FOR SUBMISSION	2019-07-23
révisions revisions		date

Projet Project

PARCS CANADA  
PARKS CANADA  
RÉFECTIION DE L'ÉCLUSE N°9  
DU CANAL-DE-CHAMBLY  
REPAIR OF LOCK #9  
CHAMBLY CANAL

Dessin Drawing

MÉCANIQUE  
MECHANICAL  
DÉTAILS  
MÉCANISME OUVERTURE DES VANNES  
DETAIL  
GATE OPENING MECHANISM

Conçu par Designed by  
Frédéric Dumont, ing. 2019-05-21  
Date

Dessiné par Drawn by  
Jacques Ouellet, techn. 2019-05-21  
Date

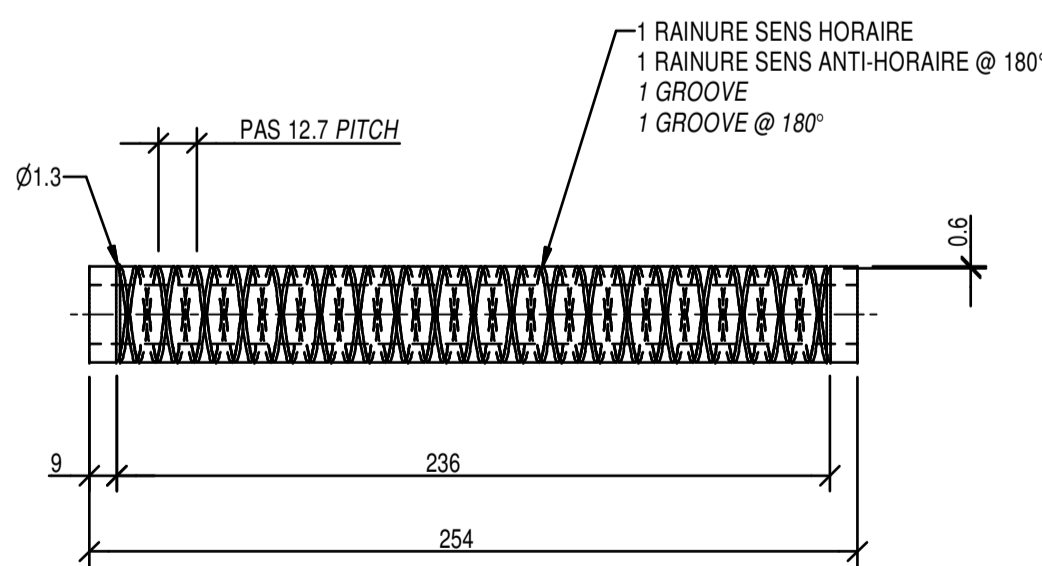
Approuvé par Approved by  
Jean-René Tremblay, ing. 2019-05-21  
Date

Soumission Tender  
Nadia Rusztyn, ing. jr 2019  
Administrateur de projets APC PCA Project Manager

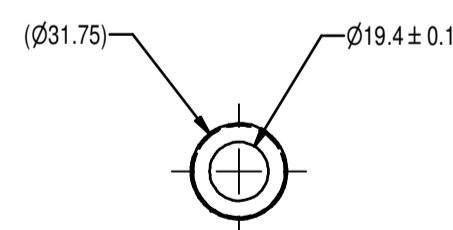
No de projet Project number  
CCHM-1446 No de contrat Contract number

APC PCA  
Nom du fichier File name  
RUC-20-212-MC.14.DWG No de classement  
File no

No de plan ou dessin File name  
RUC-20-212-MC.14 No feuille Drawing no  
14/22



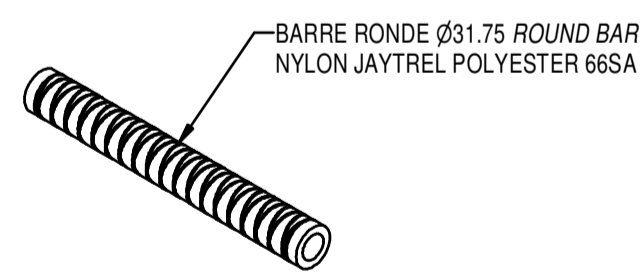
ÉLÉVATION - ELEVATION



PROFIL - PROFILE

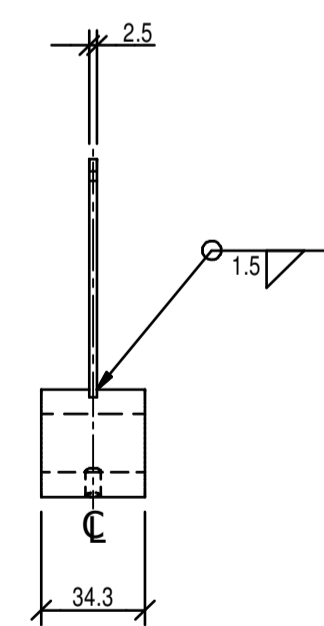
POIGNÉE DE MANIVELLE 6C  
CRANK HANDLE 06 14

ÉCH.-SCALE 1: 2.5

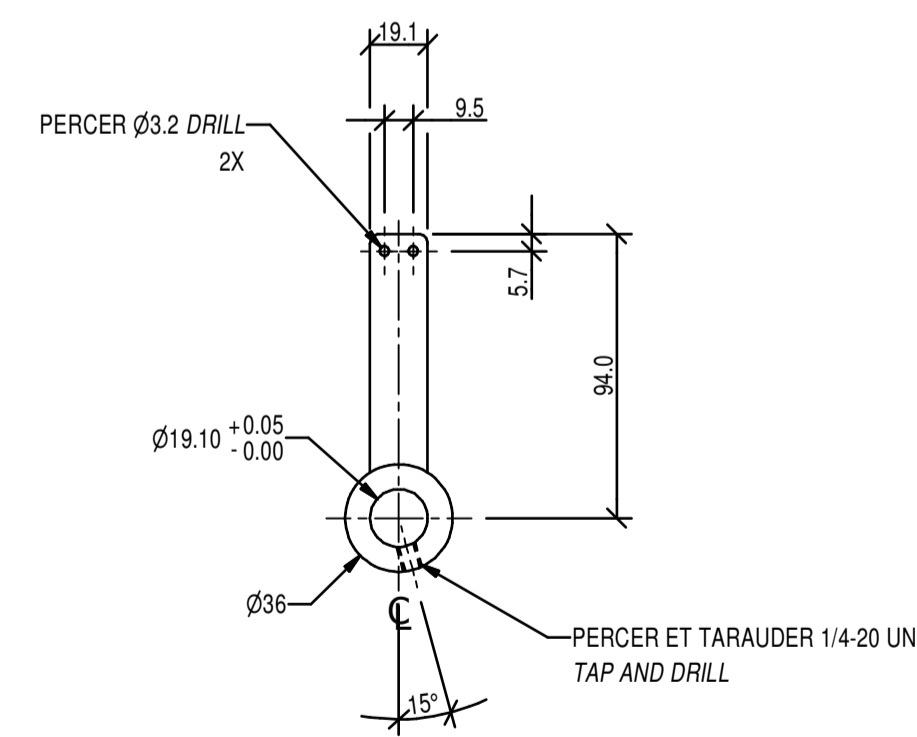


LEVIER POUR RESSORT 5H  
LEVER FOR SPRING 06 14

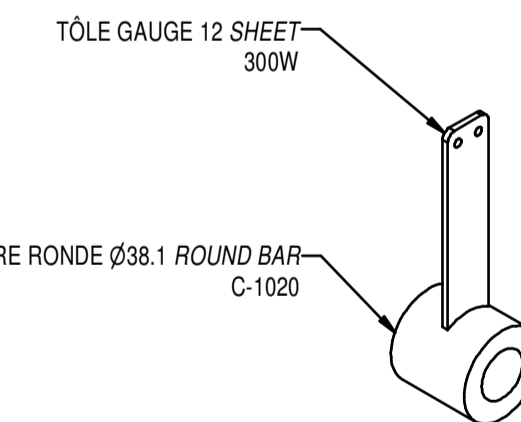
ÉCH.-SCALE 1: 2.5



PROFIL - PROFILE



ÉLÉVATION - ELEVATION



PLAQUER ZINC SELON DEVIS  
PLATE ZINC AS SPECIFICATION

SOUDURE TYPIQUE SAUF INDICATION CONTRAIRE  
TYPICAL WELDING UNLESS OTHERWISE INDICATED

t = MATÉRIEL LE PLUS ÉPAIS  
THE MOST THICK MATERIAL

TOLÉRANCES GÉNÉRALES SI NON INDIQUÉES GENERAL TOLERANCES IF NOT INDICATED	
ASSEMBLAGE ~ ASSEMBLY	USINAGE ~ MACHINING
0 A - TO 25 ..... ± 1	0.0 ..... ± 1.0
25 A - TO 600 ..... ± 1.5	0.00 ..... ± 0.5
600 + ..... ± 3	0.000 ... ± 0.1
ANGLE ..... ± 1°	√ ..... 3.2

CE DOCUMENT NE DOIT PAS  
ÊTRE UTILISÉ À DES FINS DE  
CONSTRUCTION

THIS DOCUMENT MUST NOT BE  
USED FOR CONSTRUCTION