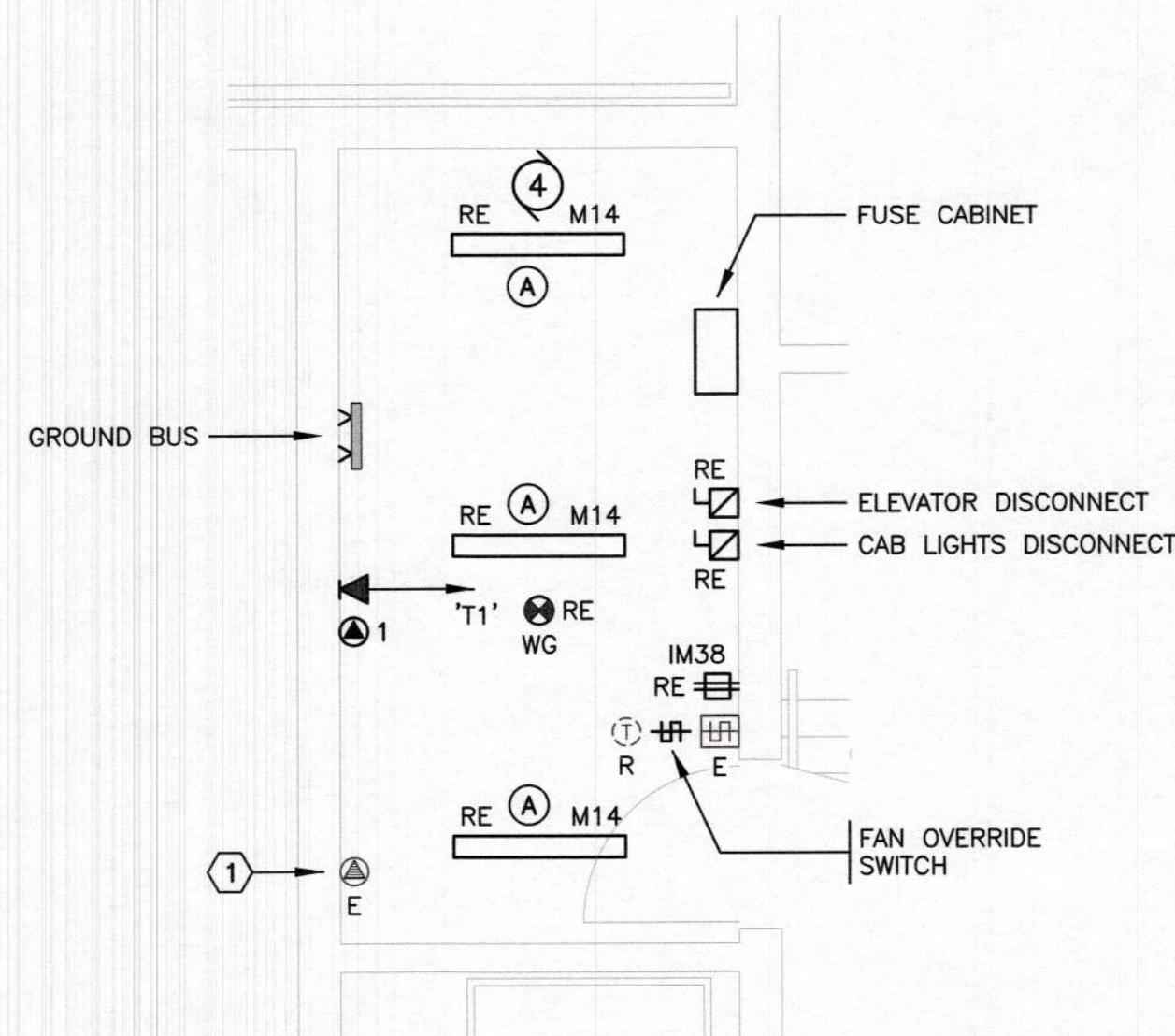


LEVEL 1 FLOOR PLAN  
1 : 100

REFERENCE NOTES

- 1 WATER SENSOR (BY THE ELEVATOR SUPPLIER) - ELECTRICAL CONTRACTOR TO CONNECT.



ROOM '1005' DETAIL  
1 : 50

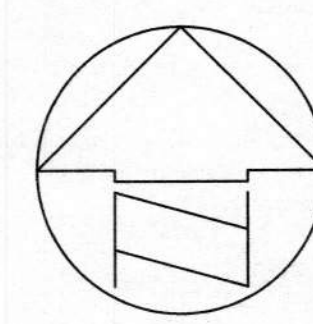
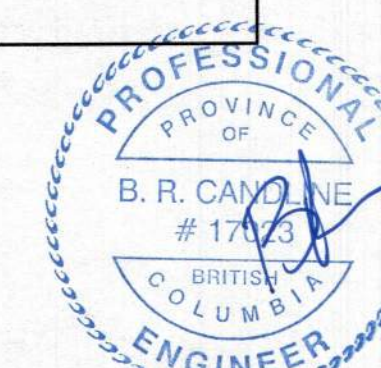
REFERENCE NOTES

- 1 CYLINDER CORROSION - CCT: 1S38. DISCONNECT EXISTING CABLES AND MAKE SAFE.

SYMBOL LEGEND		
SYMBOL	DESCRIPTION	MOUNTING
□	SURFACE MOUNTED LUMINAIRE	CEILING
□	SURFACE MOUNTED LUMINAIRE	WALL
□	RECESSED LUMINAIRE	CEILING
□	RECESSED LUMINAIRE	WALL
□	RECESSED WALL WASHER LUMINAIRE	CEILING
□	ROADWAY/AREA LUMINAIRE	POLE
□	LOW LEVEL AREA LUMINAIRE	POST
□	TRACK LIGHT	AS SHOWN
□	SURFACE MOUNTED LUMINAIRE	CEILING
□	RECESSED MOUNTED LUMINAIRE	CEILING
□	LUMINAIRE CONNECTED TO EMERGENCY POWER OR NIGHT LIGHT (NL)	CEILING
□	RECESSED LUMINAIRE UPLIGHT	FLOOR/GROUND
□	FLOODLIGHT	AS SHOWN
□	EXIT LIGHT (SF= SINGLE FACE)	CEILING
□	EXIT LIGHT	WALL
□	INDICATES LUMINAIRE TYPE 'B' - SEE LUMINAIRE SCHEDULE	
□	INDICATES REFERENCE NOTE NO. 2	
C2	INDICATES CIRCUIT NO. 2 FROM PANEL 'C'	
WP	INDICATES WEATHERPROOF DEVICE	
EX	INDICATES EXPLOSION-PROOF DEVICE	
□	SINGLE POLE TOGGLE SWITCH (3=3 WAY, 4=4 WAY, D=DIMMER)	+45°(1150)
□	TOGGLE SW. (P=PULL, T=T, P.C.=PULL CHAIN, K=KEY OPERATED)	+45°(1150)
□	OCCUPANCY SENSOR SWITCH (NUMBER INDICATES TYPE - REFER TO SCHEDULE)	+45°(1150)
□	LOW VOLTAGE LIGHT SWITCH (LETTER INDICATES CCT CONTROLLED)	+45°(1150)
□	OCCUPANCY SENSOR (NUMBER INDICATES TYPE - REFER TO SCHEDULE)	CEILING/WALL
□	DAYLIGHT SENSOR (NUMBER INDICATES TYPE - REFER TO SCHEDULE)	CEILING/WALL
□	PHOTOCELL	AS SHOWN
□	OUTLET/JUNCTION BOX	
□	USB RECEPTACLE - 15/20A	+12°(300)
□	USB RECEPTACLE - 15/20A	+12°(300)
□	SINGLE CONVENIENCE RECEPTACLE	+12°(300)
□	DUPLEX CONVENIENCE RECEPTACLE	+12°(300)
□	DUPLEX CONVENIENCE RECEPTACLE - 15/20A	+12°(300)
□	FOURPLEX CONVENIENCE RECEPTACLE	+12°(300)
□	DUPLEX CONVENIENCE RECEPTACLE PEDESTAL MOUNTED	FLOOR
□	DUPLEX CONVENIENCE RECEPTACLE FLUSH MOUNTED	FLOOR
□	DUPLEX CONVENIENCE RECEPTACLE SPLIT WIRED	ABOVE COUNTER
□	DUPLEX CONVENIENCE RECEPTACLE ISOLATED GROUND (I.G.)	+12°(300)
□	DUPLEX CONVENIENCE RECEPTACLE SWITCH ONE SIDE	+12°(300)
□	DUPLEX CONVENIENCE RECEPTACLE G.F.I. - 15/20A	ABOVE COUNTER
□	DUPLEX CONVENIENCE RECEPTACLE G.F.I. - 15/20A	+12°(300)
□	TWISTLOCK RECEPTACLE-RATING TO MATCH PROTECTIVE DEVICE	+12°(300)
□	SINGLE RECEPTACLE 208/240V-18 (AMPERAGE AS NOTED)	+12°(300)
□	SINGLE RECEPTACLE 208/240V-38 (AMPERAGE AS NOTED)	+12°(300)
□	CABLE TELEVISION OUTLET	+12°(300)
□	TELEPHONE OUTLET, W=Wall (+42"), P=PAYPHONE (+42")	+12°(300)
□	DATA OUTLET	+12°(300)
□	COMBINATION TELEPHONE/CABLE/DATA OUTLET	+12°(300)
□	DATA OUTLET FLUSH MOUNTED	FLOOR
□	PUSHBUTTON	AS NOTED
□	Buzzer	DN.12°(300)
□	CLOCK - 'D' DENOTES DOUBLE FACE	DN.12°(300)
□	EMERGENCY LIGHTING BATTERY UNIT - WITH OR WITHOUT HEADS	DN.18°(450)
□	COMBINATION EXIT SIGN / EMERGENCY LIGHTING FLOOD LIGHTS	WALL
□	EMERGENCY LIGHTING FLOOD LIGHT - SINGLE OR DOUBLE	AS SHOWN
□	RECESSED EMERGENCY LIGHT	AS SHOWN
□	UNFUSED DISCONNECT SWITCH	AS SHOWN
□	FUSED DISCONNECT SWITCH	AS SHOWN
□	MAGNETIC MOTOR STARTER	+60°(1500)
□	COMBINATION DISCONNECT/MAGNETIC MOTOR STARTER	+60°(1500)
□	MANUAL MOTOR STARTER	AS SHOWN
□	ELECTRIC MOTOR CONNECTION	
□	FIXED WIRE EQUIPMENT CONNECTION	+60°(1500)
□	THERMOSTAT	
ELECTRIC BASEBOARD HEATER UNLESS NOTED AS FOLLOWS: FF = FORCE FLOW, UH = UNIT HEATER, CH = CONNECTION HEATER KS = KICKSPACE HEATER, PD = PATIO DOOR HEATER B.I. = BUILT-IN THERMOSTAT, C.R. = CONTROL RELAY		
□	ELECTRICAL DISTRIBUTION PANELBOARD	SURFACE
□	ELECTRICAL DISTRIBUTION PANELBOARD	CEILING
□	SPEAKER	WALL
□	SPEAKER	+12°(300)
□	MICROPHONE OUTLET	+12°(300)
□	INTERCOM COMMUNICATION HANDSET	+60°(1500)
□	AUTOMATIC HEAT DETECTOR 135° R.O.R.	CEILING
□	AUTOMATIC HEAT DETECTOR 190° FIXED TEMP.	CEILING
□	SMOKE DETECTOR (D DENOTES DUCT DETECTOR)	CEILING
□	SMOKE ALARM	CEILING
□	FIRE ALARM PULL STATION	+45°(1150)
□	FIRE ALARM BELL OR HORN & PULL STATION	DN.12°(300)
□	FIRE ALARM BELL OR HORN	DN.12°(300)
□	COMBINATION FIRE ALARM BELL/STROBE OR HORN/STROBE	+45°(1150)
□	FIRE ALARM BUZZER	CEILING
□	FIRE ALARM SPEAKER	CEILING
□	COMBINATION FIRE ALARM SPEAKER/STROBE LIGHT	CEILING
□	MAGNETIC DOOR HOLDER	FLOOR/WALL
□	FLOW SWITCH	
□	PRESSURE SWITCH	
□	TAMPER SWITCH	
□	PAC POLE WITH DEVICES AS NOTED	
□	MULTI SERVICE RECESSED FLOOR BOX WITH DEVICES AS NOTED	FLOOR
□	FIXED WIRE CONNECTION TO PRE-WIRED FURNITURE SCREENS	
□	INTRUDER ALARM MAGNETIC DOOR SWITCH	
□	INTRUDER ALARM PASSIVE INFRARED DETECTOR	WALL
□	INTRUDER ALARM PASSIVE INFRARED DETECTOR	CEILING
□	SECURITY CAMERA	
□	INTRUDER ALARM KEYPAD	
□	INDICATES EXISTING TO REMAIN	
□	INDICATES EXISTING TO BE REMOVED	
□	REPLACE EXISTING IN SAME LOCATION	
□	NIGHT LIGHT (ON CONTINUOUSLY)	
NOTE ALL DIMENSIONS ARE TO CENTRE OF DEVICE BOX		

FIRE ALARM NOTES:

- CONNECT NEW ELEVATOR LOBBY SMOKE DETECTORS TO CORRIDOR FIRE ALARM ZONE ON EACH FLOOR.
- CONNECT EACH ELEVATOR SHAFT AND EACH ELEVATOR MACHINE ROOM DEVICE TO EXISTING FIRE ALARM ZONES.
- PROVIDE THE FOLLOWING SIGNALS TO EACH ELEVATOR CONTROLLER:
  - LOBBY SMOKE DETECTOR (EACH FLOOR)
  - ELEVATOR SHAFT HEAT DETECTOR
  - ELEVATOR MACHINE ROOM SMOKE DETECTOR



Revision/	Description/Description	Date/Date
4	ISSUED FOR TENDER	19/04/28
3	ISSUED FOR 99% REVIEW	19/02/28
2	ISSUED FOR REVIEW	19/02/20
1	ISSUED FOR DD REVIEW	18/10/15

Agriculture & Agri-Food Canada

Project title/Titre du projet  
4200 BC-97  
Summerland, BC V0H 1Z0

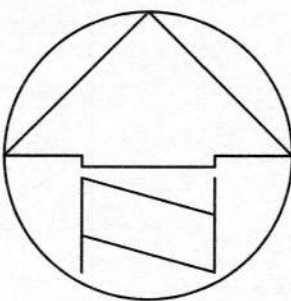
Elevator Replacement at Summerland Research and Development Centre

Consultant Signature Only  
Designed by/Concept par  
DL  
Drawn by/Dessiné par  
SK  
PWGSC Project Manager/Administrateur de Projets TP50C  
Phillip Fung  
Regional Manager, Architectural and Engineering Services  
Gestionnaire régionale, Services d'architectural et de génie, TP50C  
Preetipal Paul

Drawing title/Titre du dessin  
LEVEL 1 FLOOR PLAN,  
ROOM '1005' DETAIL

2019 APR 28 FALCON JOB NO. 18138.001	Project No./No. du projet R99799.001	Sheet/Feuille E - 1 OF 8	Revision no./ Loi Révision no. -
--	---	--------------------------------	---





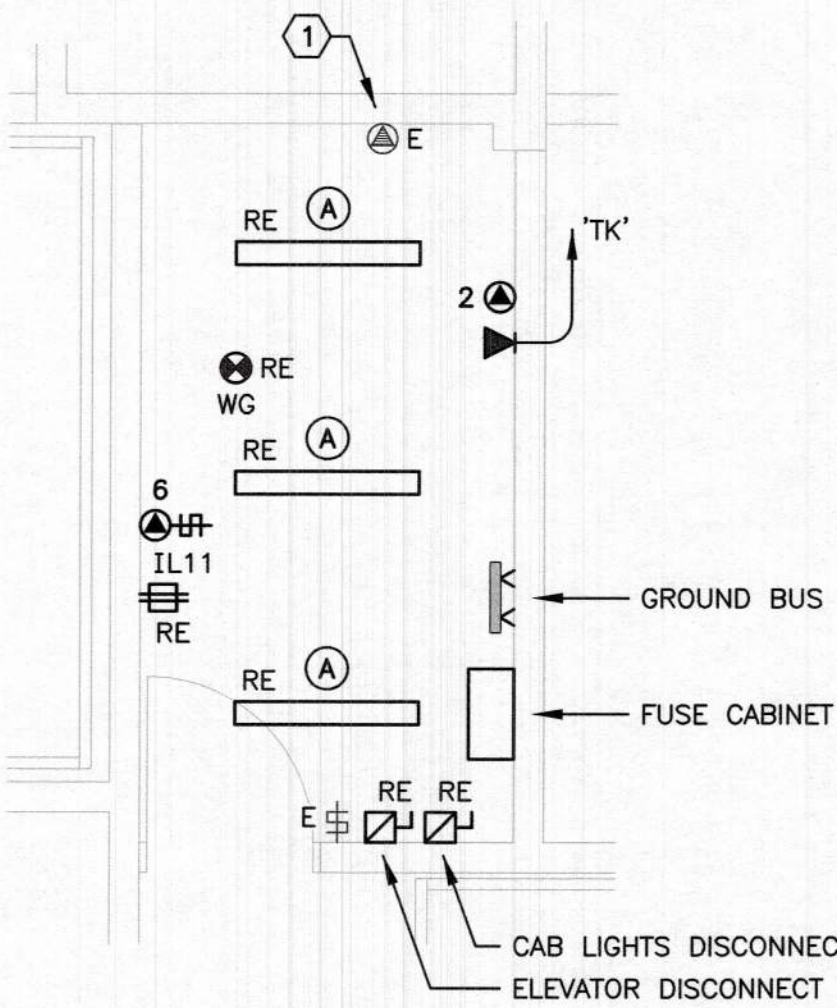
Revision/ Révision	Description/Description	Date/Date
4	ISSUED FOR TENDER	19/04/26
3	ISSUED FOR 99% REVIEW	19/02/26
2	ISSUED FOR REVIEW	19/02/20
1	ISSUED FOR DD REVIEW	18/10/15

Agriculture &  
Agri-Food Canada

Project title/Titre du projet  
**4200 BC-97  
Summerland, BC V0H 1Z0**  
**Elevator Replacement at  
Summerland Research and  
Development Centre**

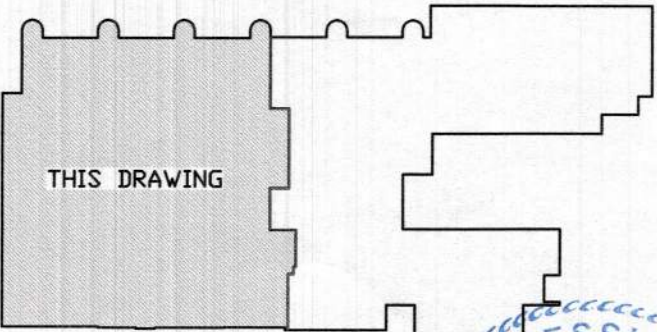
Consultant Signature Only  
Designed by/Concept par  
DL  
Drawn by/Dessiné par  
SK  
PWSC Project Manager/Administrateur de Projets TPSC  
Philip Fung  
Regional Manager, Architectural and Engineering Services  
Gestionnaire régionale, Services d'architectural et de génie, TPSC  
Prasitipal Paul  
Drawing title/Titre du dessin  
**SECOND FLOOR PLAN -  
WEST,  
ROOM '2013' DETAIL**

Project No./No. du projet	Sheet/Feuille	Revision no./ La Révision no.
FALCON JOB NO. 18138.001 <b>R99799.001</b>	<b>E - 2</b> OF 8	-

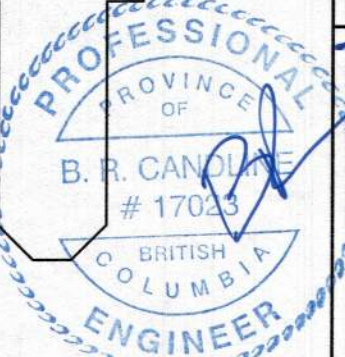


ROOM '2013' DETAIL  
1 : 50  
1  
E-2

REFERENCE NOTES  
1 CYLINDER CORROSION - CCT: 3S11. DISCONNECT  
EXISTING CABLES AND MAKE SAFE.



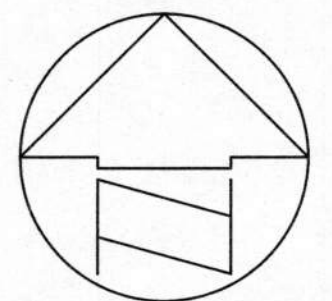
KEY PLAN  
N T S



SECOND FLOOR PLAN - WEST  
1 : 100

REFERENCE NOTES  
1 WATER SENSOR (BY THE ELEVATOR SUPPLIER) - ELECTRICAL CONTRACTOR  
TO CONNECT.





4	ISSUED FOR TENDER	19/04/26	
3	ISSUED FOR 99% REVIEW	19/02/28	
2	ISSUED FOR REVIEW	19/02/20	
1	ISSUED FOR DD REVIEW	18/10/15	
Revision/ Revision	Description/Description	Date/Date	
Client/client			

**Agriculture &  
Agri-Food Canada**

Project title/Titre du projet

**4200 BC-97**  
**Summerland, BC V0H 1Z0**

## Elevator Replacement at Summerland Research and Development Centre

Consultant Signature Only
---------------------------

Designed by/Concept par	DL
-------------------------	----

Drawn by/Dessine par  
SK

PWGSC Project Manager/Administrateur de Projets TPSGC  
Philip Fung

Drawing title/Titre du dessin
-------------------------------

**SECOND FLOOR PLAN -  
EAST**

Project No./No. du  
projet

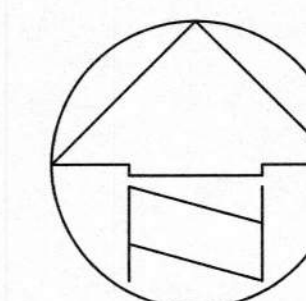
**R99799.001**

Sheet/Feuille

**E - 3**

Revision no./  
La Révision  
no.





Revision/ Révision	Description/Description	Date/Date
4	ISSUED FOR TENDER	19/04/26
3	ISSUED FOR 99% REVIEW	19/02/28
2	ISSUED FOR REVIEW	19/02/20
1	ISSUED FOR DD REVIEW	18/10/15

**Agriculture &  
Agri-Food Canada**

Project title/Titre du projet  
**4200 BC-97  
Summerland, BC V0H 1Z0**

**Elevator Replacement at  
Summerland Research and  
Development Centre**

Consultant Signature Only

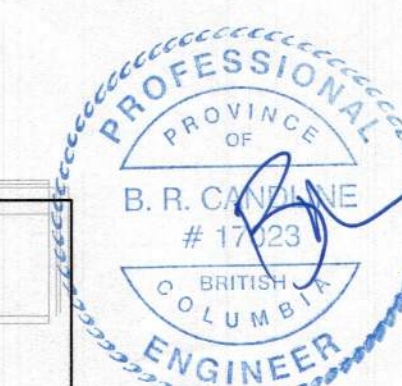
Designed by/Concept par  
DL

Drawn by/Dessiné par  
SK

PWSC Project Manager/Administrateur de Projets TPSC  
Philip Fung

Regional Manager, Architectural and Engineering Services  
Gestionnaire régionale, Services d'architectural et de génie, TPSC  
Preetpal Paul

Drawing title/Titre du dessin  
**THIRD FLOOR PLAN -  
WEST,  
FIRE ALARM  
ANNUNCIATOR PICTURE**

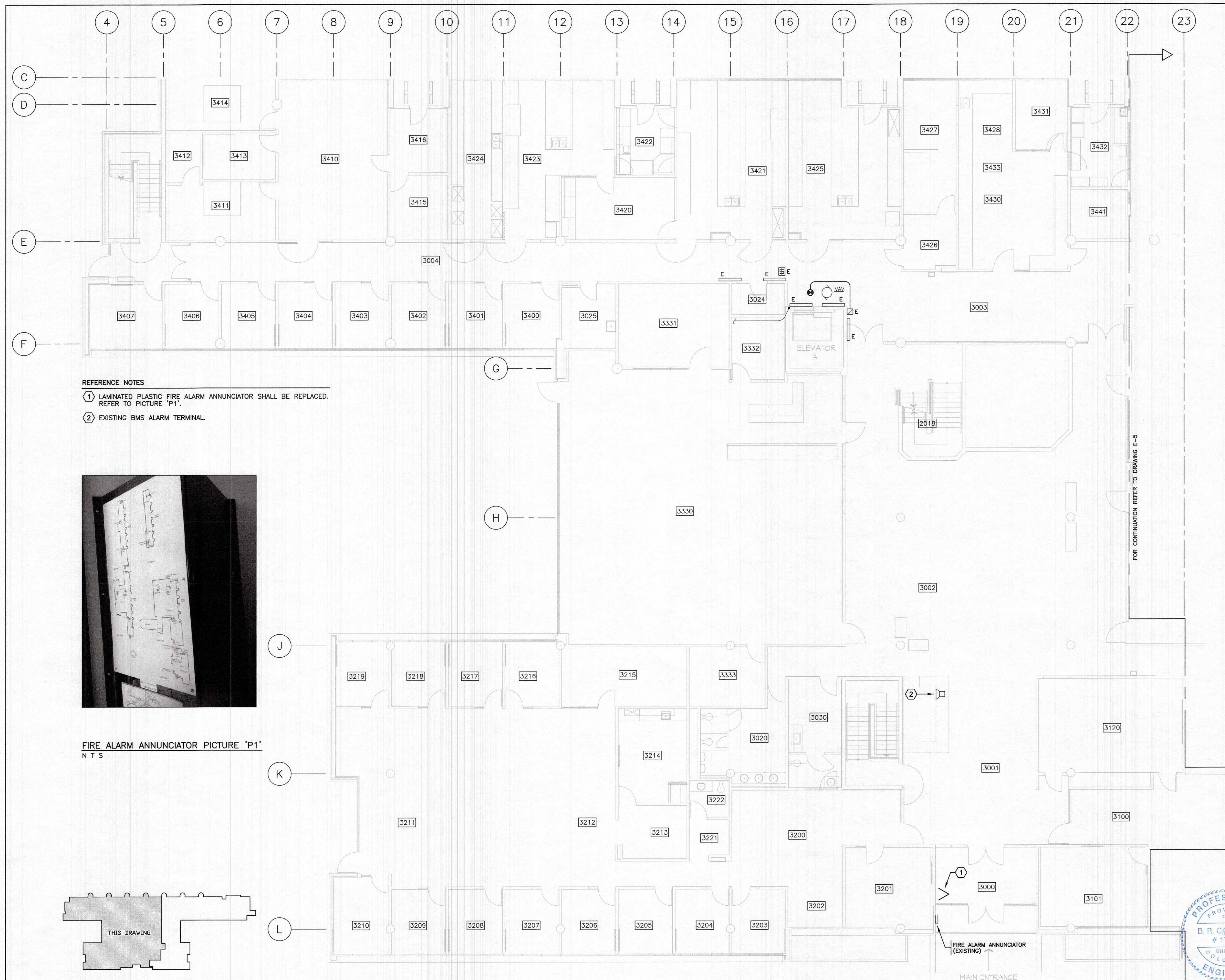


2019 APR 26  
FALCON JOB NO.  
18138.001

Project No./No. du  
projet  
**R99799.001**

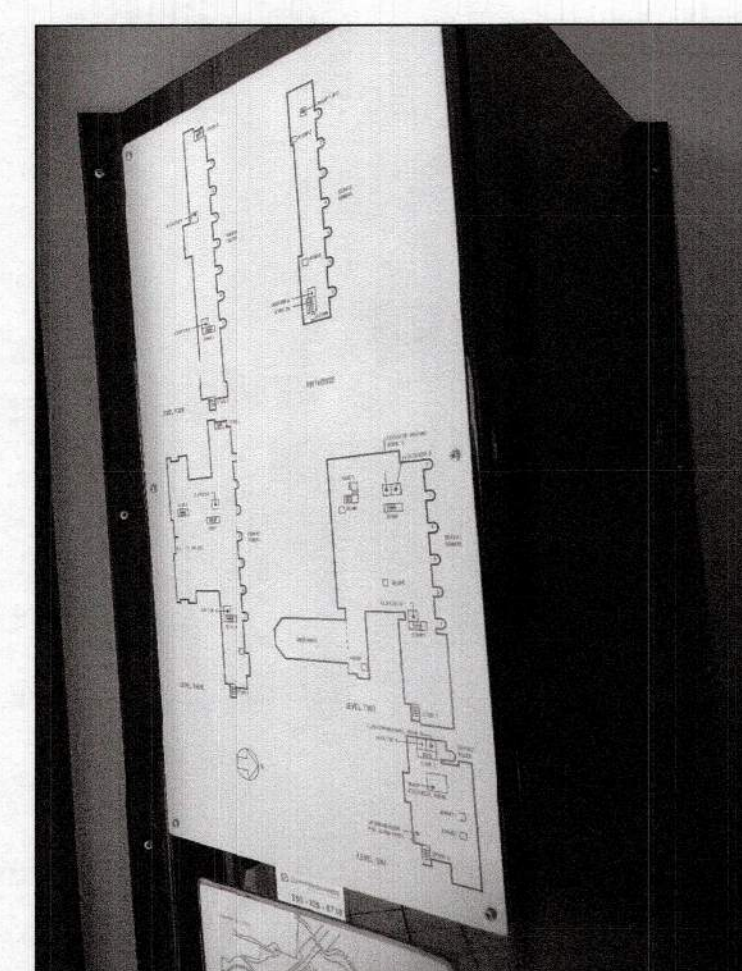
Sheet/Fauille  
**E - 4**  
OF 8

Revision no./  
La Révision  
no.  
-

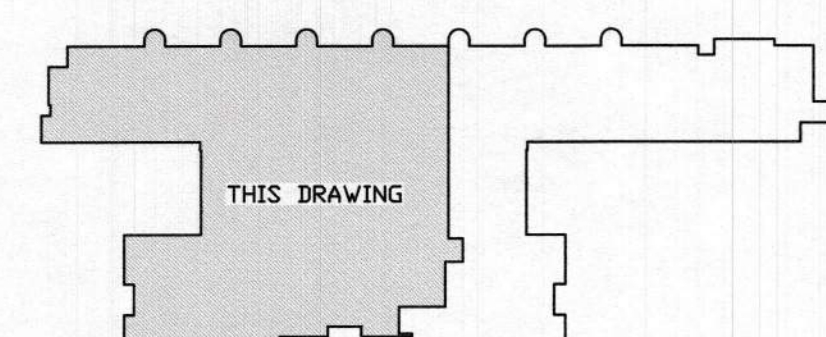


**REFERENCE NOTES**

- ① LAMINATED PLASTIC FIRE ALARM ANNUNCIATOR SHALL BE REPLACED.  
REFER TO PICTURE 'P1'.
- ② EXISTING BMS ALARM TERMINAL.



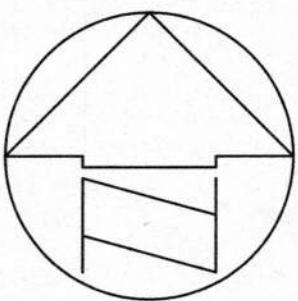
**FIRE ALARM ANNUNCIATOR PICTURE 'P1'**  
N T S



**KEY PLAN**  
N T S

**THIRD FLOOR PLAN - WEST**  
1 : 100





Revision/ Révision	Description/Description	Date/Date
4	ISSUED FOR TENDER	19/04/28
3	ISSUED FOR 90% REVIEW	19/02/28
2	ISSUED FOR REVIEW	19/02/20
1	ISSUED FOR DD REVIEW	18/10/15

**Agriculture &  
Agri-Food Canada**

Project title/Titre du projet  
**4200 BC-97  
Summerland, BC V0H 1Z0**

**Elevator Replacement at  
Summerland Research and  
Development Centre**

Consultant Signature Only

Designed by/Concept par  
DL

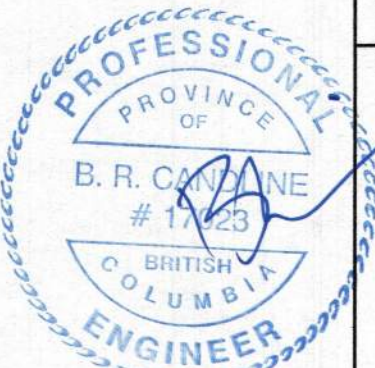
Drawn by/Dessiné par  
SK

PWGC Project Manager/Administrateur de Projets TPSGC  
Phillip Fung

Regional Manager, Architectural and Engineering Services,  
Gestionnaire régionale, Services d'architecture et de génie, TPSGC  
Preetpal Paul

Drawing title/Titre du dessin

**THIRD FLOOR PLAN -  
EAST**

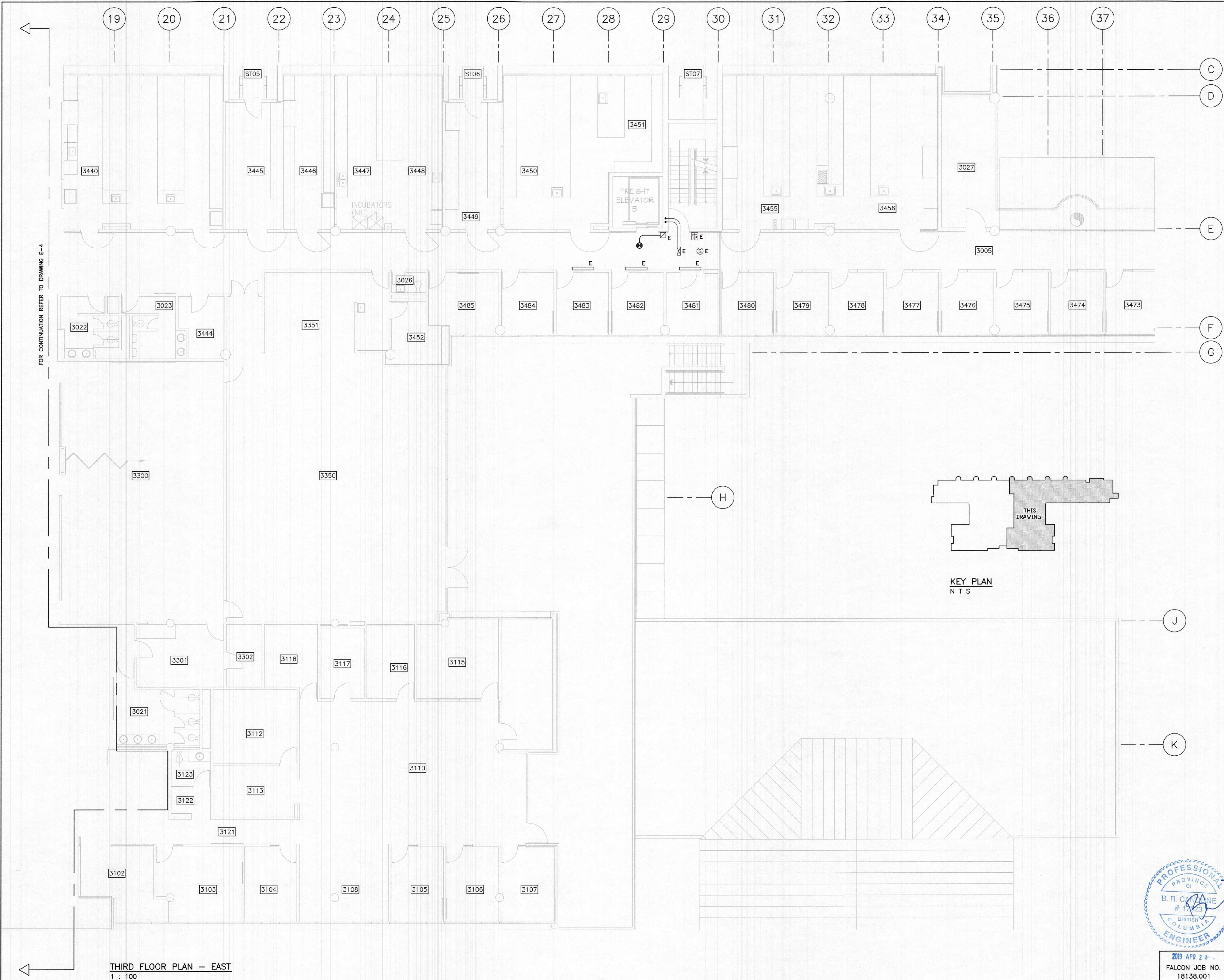


2019 APR 28  
FALCON JOB NO.  
18138.001

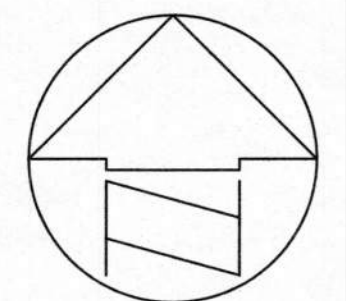
Project No./No. du  
projet  
**R99799.001**

Sheet/Feuille  
**E - 5**  
OF 8

Revision no./  
La Révision  
no. -







Revision/	Description/Description	Date/Date
4	ISSUED FOR TENDER	19/04/26
3	ISSUED FOR 99% REVIEW	19/02/28
2	ISSUED FOR REVIEW	19/02/20
1	ISSUED FOR DD REVIEW	18/10/15

Client/client  
**Agriculture &  
Agri-Food Canada**

Project title/Titre du projet  
**4200 BC-97  
Summerland, BC V0H 1Z0**

**Elevator Replacement at  
Summerland Research and  
Development Centre**

Consultant Signature Only

Designed by/Concept par  
DL

Drawn by/Dessiné par  
SK

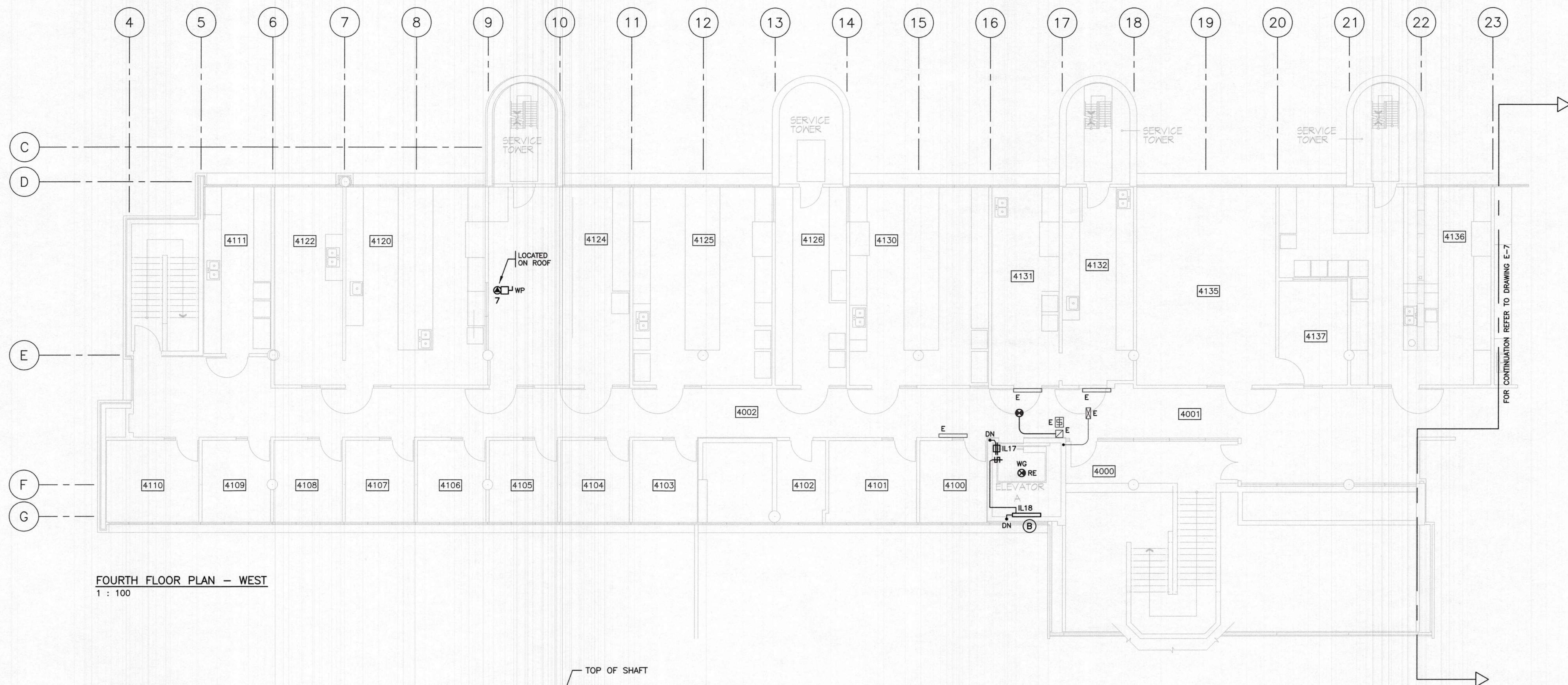
PWGSC Project Manager/Administrateur de Projets TFSOC  
Phillip Fung

Regional Manager, Architectural and Engineering Services  
Gestionnaire régionale, Services d'architecture et de génie, TFSOC  
Preetpal Paul

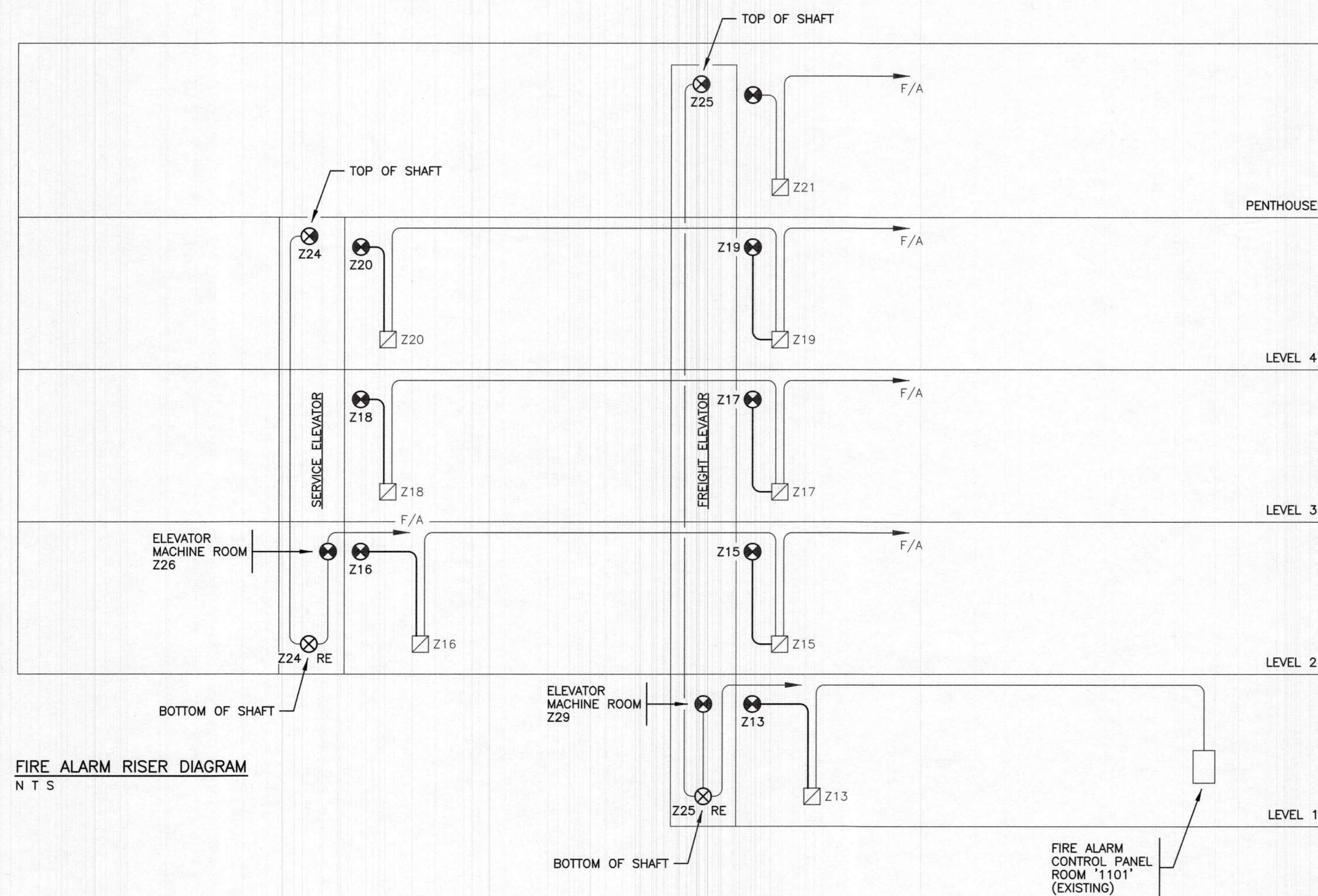
Drawing title/Titre du dessin

**FOURTH FLOOR PLAN -  
WEST,  
FIRE ALARM RISER DIAGRAM**

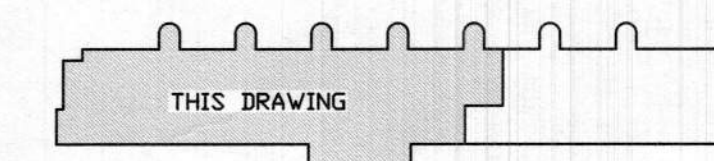
Project No./No. du projet	Sheet/Feuille	Revision no./ La Revision no.
R99799.001	<b>E - 6</b> OF 8	-



**FOURTH FLOOR PLAN -- WEST**  
1 : 100



**FIRE ALARM RISER DIAGRAM**  
N T S

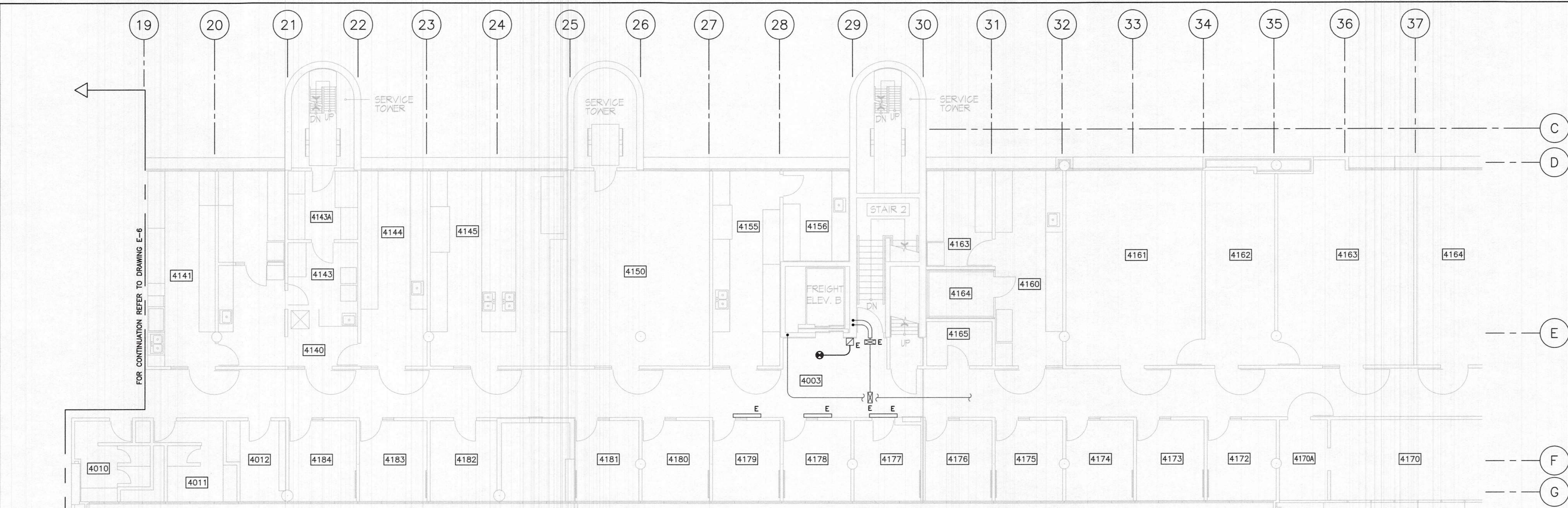


**KEY PLAN**  
N T S

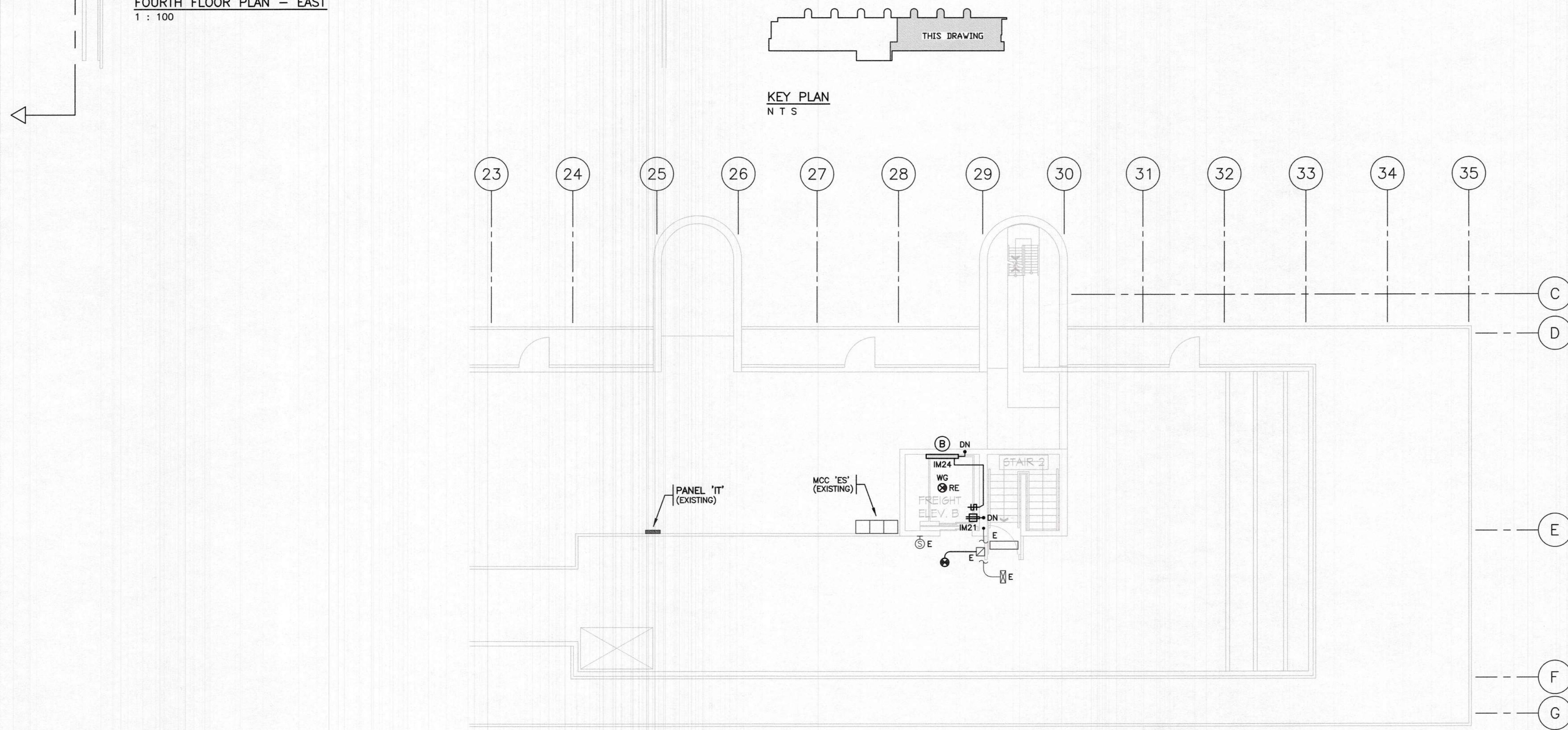


2019 APR 28  
FALCON JOB NO.  
18138.001

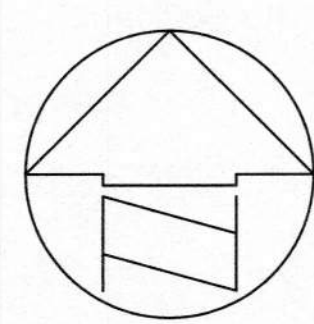




FOURTH FLOOR PLAN - EAST  
1 : 100



PENTHOUSE PLAN - EAST  
1 : 100



Revision/	Description/Description	Date/Date
4	ISSUED FOR TENDER	19/04/26
3	ISSUED FOR 99% REVIEW	19/02/28
2	ISSUED FOR REVIEW	19/02/20
1	ISSUED FOR DD REVIEW	18/10/15

Client/client  
**Agriculture & Agri-Food Canada**

Project title/Titre du projet  
**4200 BC-97  
Summerland, BC V0H 1Z0**  
**Elevator Replacement at  
Summerland Research and  
Development Centre**

Consultant Signature Only  
Designed by/Concept par  
DL  
Drawn by/Dessiné par  
SK  
PWOSC Project Manager/Administrateur de Projets TPSGC  
Philip Fung  
Regional Manager, Architectural and Engineering Services  
Gestionnaire régionale, Services d'architecture et de génie, TPSGC  
Preestipal Paul

Drawing title/Titre du dessin  
**FOURTH & PENTHOUSE FLOOR PLANS - EAST**

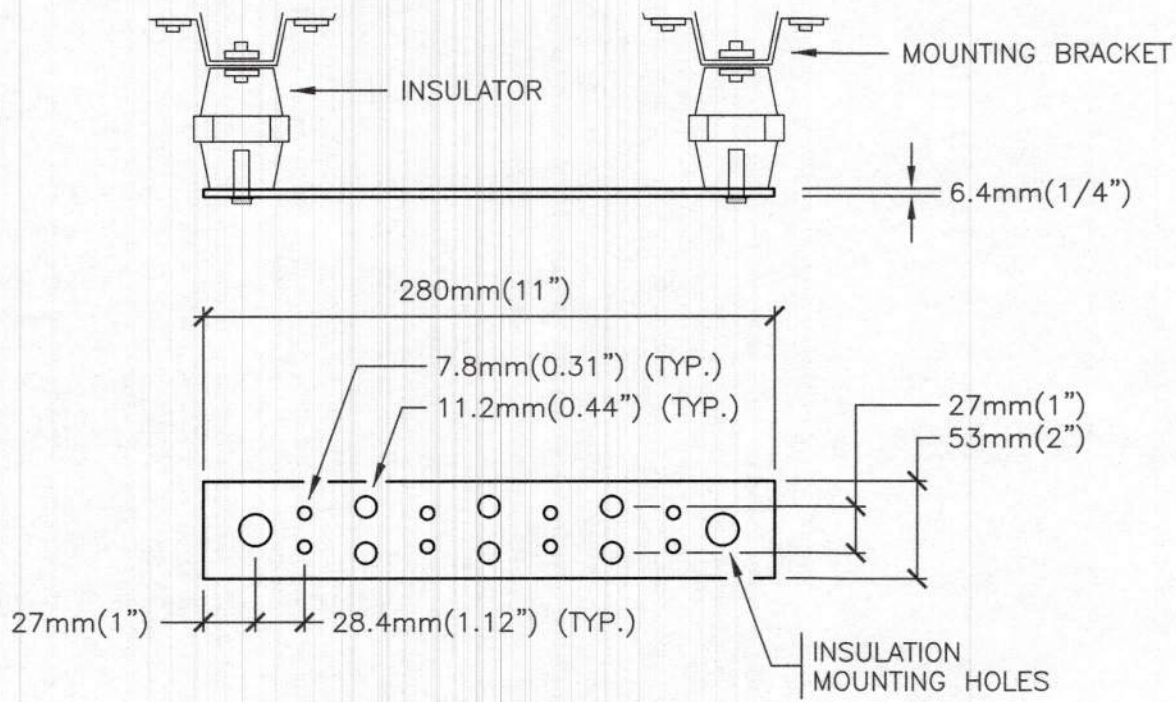


2019 APR 23 FALCON JOB NO. 18138.001	Project No./No. du projet <b>R99799.001</b>	Sheet/Feuille <b>E - 7</b> OF 8	Revision no./La Révision no. -
--	--	---------------------------------------	-----------------------------------



EQUIPMENT SCHEDULE									
NO.	REF.	DESCRIPTION	LOAD	VOLT	Ø	CCT. NO.	BKR. SIZE	FEEDER	NOTE
1	SE-02	SERVICE ELEVATOR	50HP	600	3	S20,22,24/IS15	3P-100	3#4	1,6,7
2	PE-01	PASSENGER ELEVATOR	40HP	600	3	S14,16,18/3S9	3P-100	3#4	1,6,7
3									
4	EF-1005	EXHAUST FAN (REPLACE)	1/3HP	120	1	IM?	1P-15	2#12	3,4
5									
6	FC-2013	FAN COIL	1.0A	208	1			3#10	5
7	CU-2013	CONDENSING UNIT	25.0A	208	1	1T22,24	2P-30	2#10	2
8									
9									
10									

- NOTES
- PROVIDE FUSED DISCONNECTS AND FLEXIBLE CONNECTIONS TO ELEVATOR CONTROLLER FOR DRIVE UNIT AND CAR LIGHTS. PROVIDE 15A 120V CIRCUIT FOR CAR LIGHTS AS NOTED. CONDUCTORS FROM DISCONNECT TO CONTROLLER MUST BE COPPER. REPLACE EXISTING DISCONNECT SWITCHES.
  - PROVIDE BREAKER IN EXISTING PANEL (FPE).
  - PROVIDE RELAY C/W 24V COIL FOR CONTROL CONNECTION BY MECHANICAL CONTRACTOR.
  - REPLACE REVERSE ACTING THERMOSTAT WITH SINGLE POLE TOGGLE OVERRIDE SWITCH (WIRE IN PARALLEL). COORDINATE WITH CONTROLS CONTRACTOR.
  - PROVIDE CONNECTION FROM OUTDOOR UNIT (CU) TO INDOOR UNIT (FC) – CONFIRM FEEDER.
  - PROVIDE NEW FEEDER.
  - PROVIDE 2#12 CABLES FROM ELEVATOR CONTROLLER TO TRANSFER SWITCH.

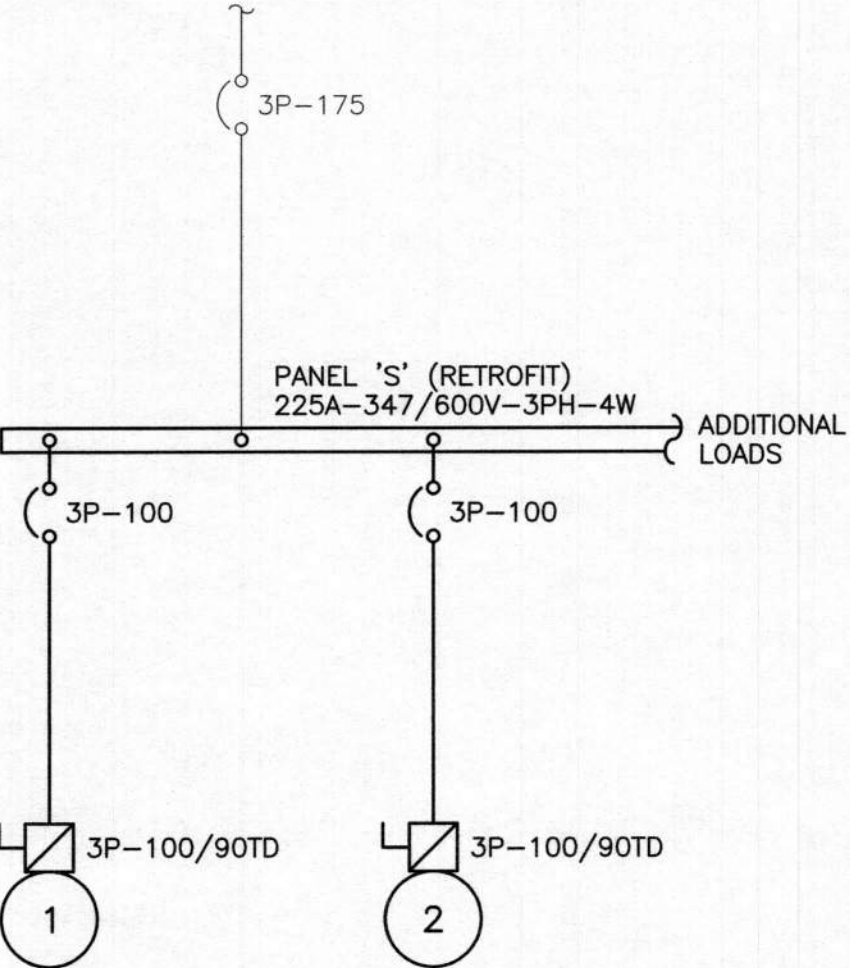


GROUNDING BUS BAR DETAIL  
N T S

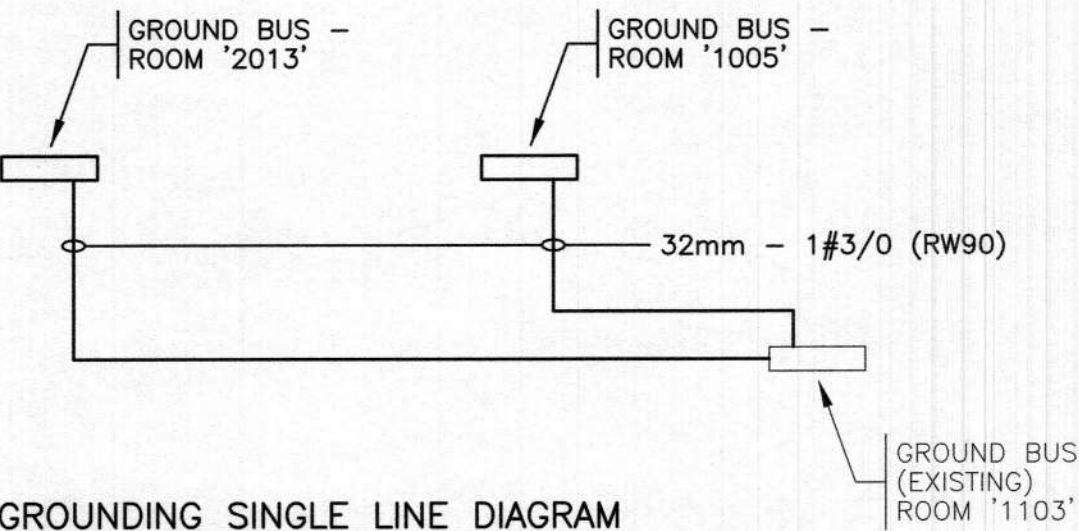
- NOTES:
- GROUNDING BUS BAR SHALL BE MOUNTED ON PLYWOOD BACKBOARD OR WALL AT 2 METERS (80") A.F.F.
  - GROUNDING BUS BAR KIT SHALL BE PANDUIT GB280304TPI OR EQUIVALENT.
  - ALL ITEMS (GROUNDING BUS BAR KIT, BONDING, BACKBONE, WIRE, ETC.) BY ELECTRICAL CONTRACTOR UNLESS NOTED OTHERWISE.
  - ELECTRICAL CONTRACTOR TO TIE-IN GROUND BUS BAR TO BASE BUILDING MAIN GROUND LOCATED IN THE BASE BUILDING ELECTRICAL ROOM.

225A-347/600V-3PH-4W PANEL 'S'									
LOAD	TRIP AMP	BR. NO.	BUS A B C	BR. NO.	TRIP AMP	LOAD			
UNIT B01	3P	1	⬤	2	15	LIGHTING?			
	15	3	⬤	4	15	↓			
	A	5	⬤	6	15				
UNIT CP49	3P	7	⬤	8	3P	UNIT P12A			
	15	9	⬤	10	15				
	A	11	⬤	12	A				
UNIT CP48	3P	13	⬤	14	3P	PE-01			
	15	15	⬤	16	100				
	A	17	⬤	18	A				
UNIT B03	3P	19	⬤	20	3P	SE-02			
	15	21	⬤	22	100				
	A	23	⬤	24	A				
UNIT B03	3P	25	⬤	26	3P	UNIT P12			
	15	27	⬤	28	15				
	A	29	⬤	30	A				
UNIT CC1	3P	31	⬤	32					
	15	33	⬤	34					
	A	35	⬤	36					
LIGHTING?	15	37	⬤	38	3P	}			
	15	39	⬤	40	15				
	15	41	⬤	42	A				

- NOTES
- EXISTING FEDERAL PIONEER NHDP PANEL TO BE RETROFITTED WITH SCHNEIDER ELECTRIC PANEL RETROFIT KIT.
  - ALL BREAKERS ARE TO HAVE A MINIMUM OF 22kA INTERRUPTING RATING.
  - PROVIDE NEW TYPEWRITTEN CIRCUIT DIRECTORY.



SINGLE LINE DIAGRAM  
N T S



GROUNDING SINGLE LINE DIAGRAM  
N T S

4	ISSUED FOR TENDER	19/04/26
3	ISSUED FOR 99% REVIEW	19/02/28
2	ISSUED FOR REVIEW	19/02/20
1	ISSUED FOR DD REVIEW	18/10/15
Revision/Revisions	Description/Description	Date/Date
Client/client		

Agriculture & Agri-Food Canada

Project title/Titre du projet  
**4200 BC-97  
Summerland, BC V0H 1Z0**  
**Elevator Replacement at Summerland Research and Development Centre**

Consultant Signature Only  
Designed by/Concept par DL  
Drawn by/Dessine par SK  
PWGSC Project Manager/Administrateur de Projets TPSGC  
Phillip Fung  
Regional Manager, Architectural and Engineering Services  
Gestionnaire régionale, Services d'architectural et de génie, TPSGC  
Preetipal Paul

Drawing title/Titre du dessin  
**EQUIPMENT SCHEDULE, DETAIL, DISTRIBUTION**



2019 APR 26 FALCON JOB NO. 18138.001	Project No./No. du projet R99799.001	Sheet/ Feuille <b>E - 8</b> OF 8	Revision no./ La Révision no. -
--	---	--	---------------------------------------