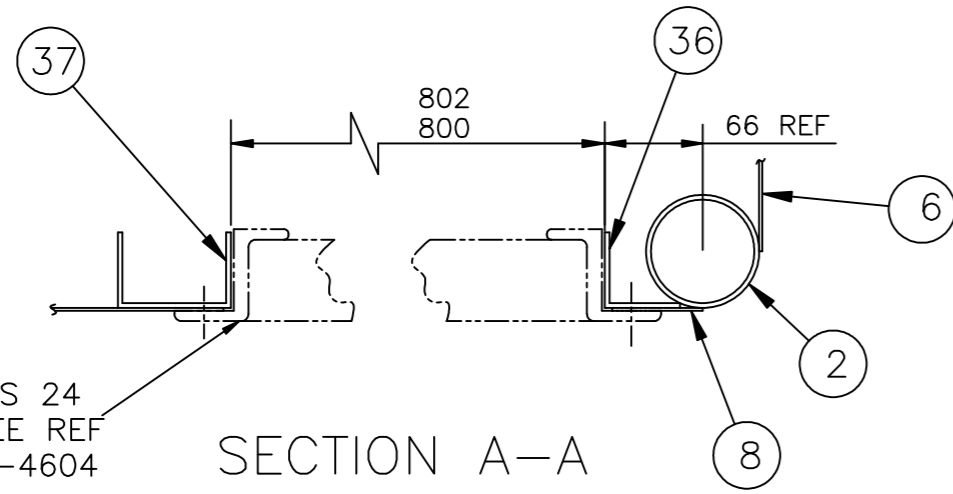
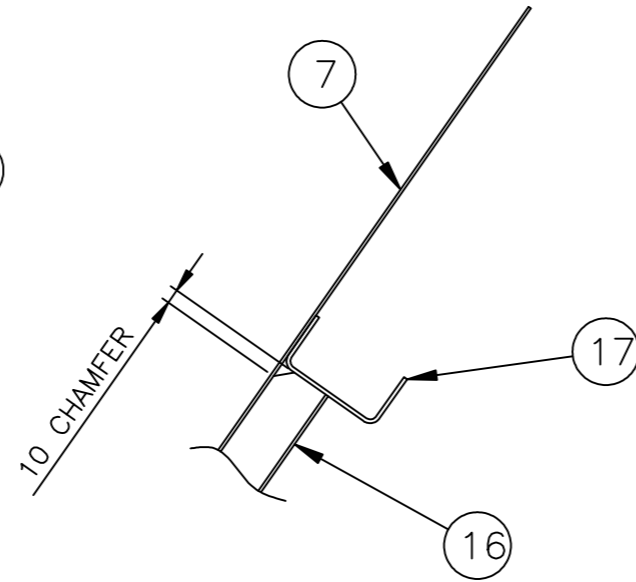


SEAGLAZE SERIES 24
DOOR FRAME SEE REF
HTWAP1-88-18-4604

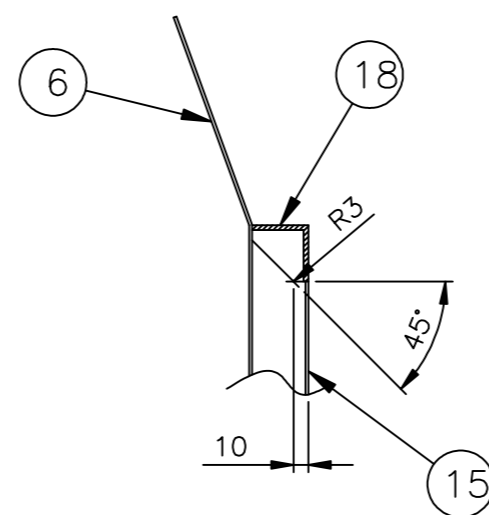
SECTION A-A



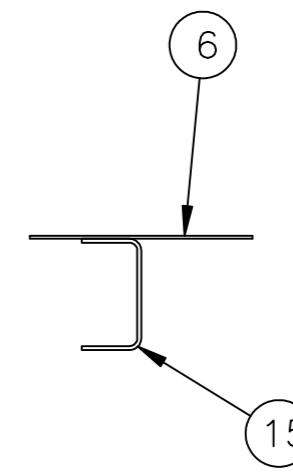
SECTION F-F
SEE SHEET 1



SECTION C-C

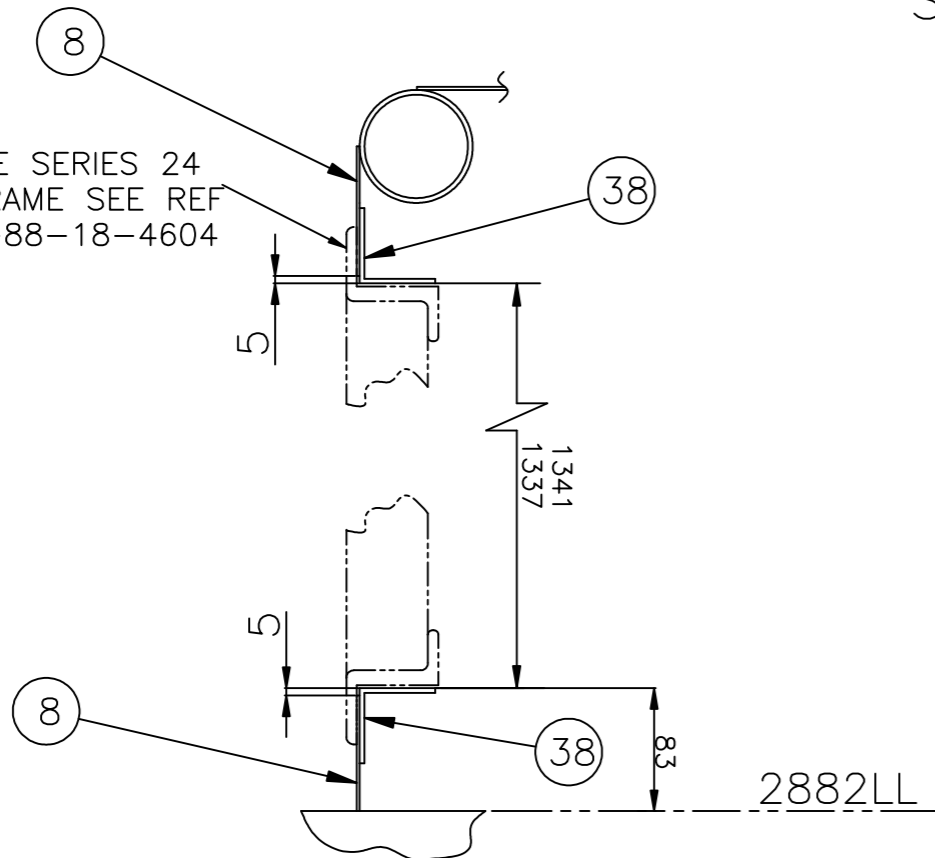


SECTION D-D

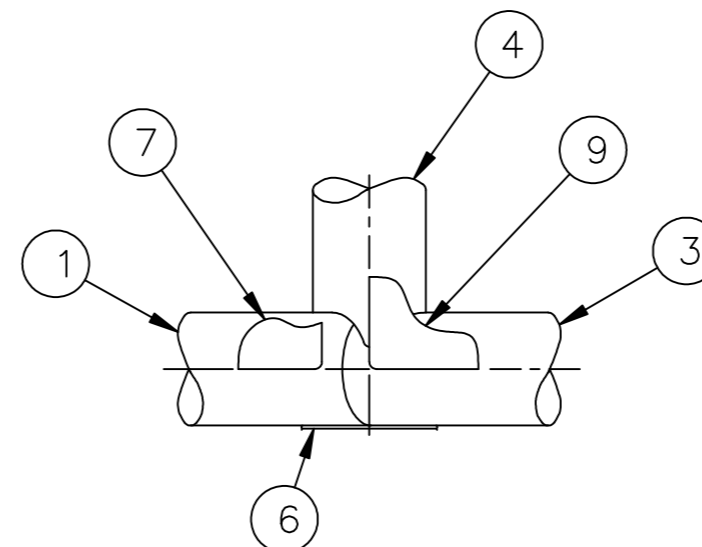


SEAGLAZE SERIES 24
DOOR FRAME SEE REF
HTWAP1-88-18-4604

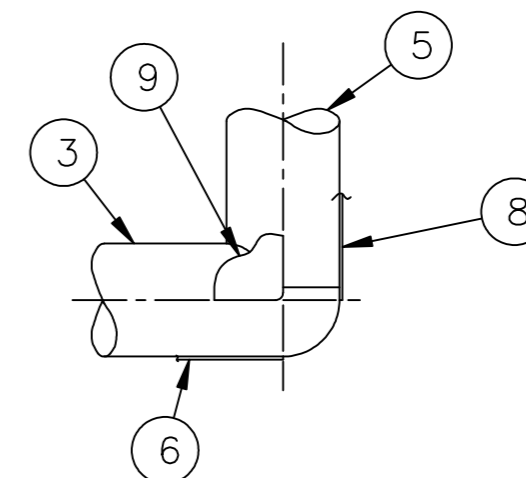
SECTION B-B



VIEW ON ARROW K

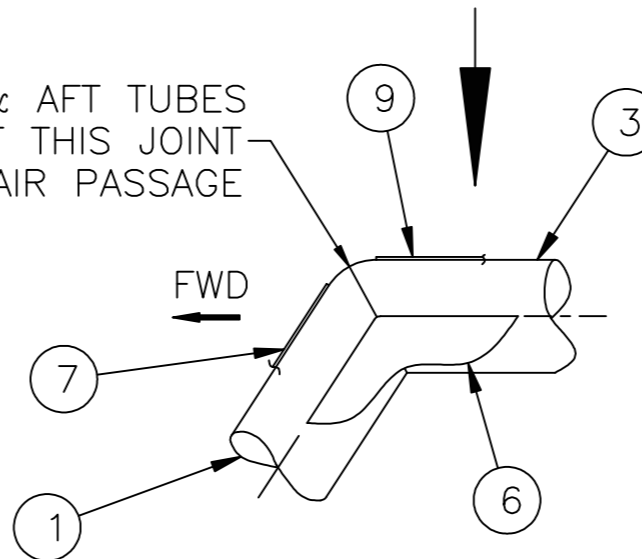


VIEW ON ARROW J



ARROW K

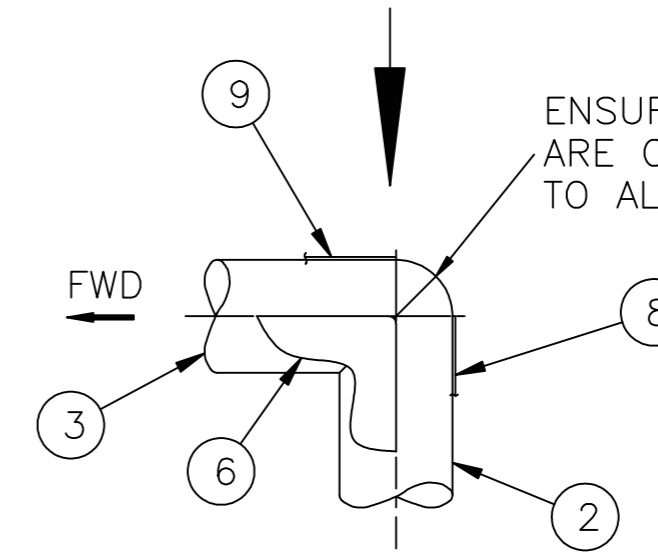
ENSURE FWD & AFT TUBES
ARE OPEN AT THIS JOINT
TO ALLOW AIR PASSAGE



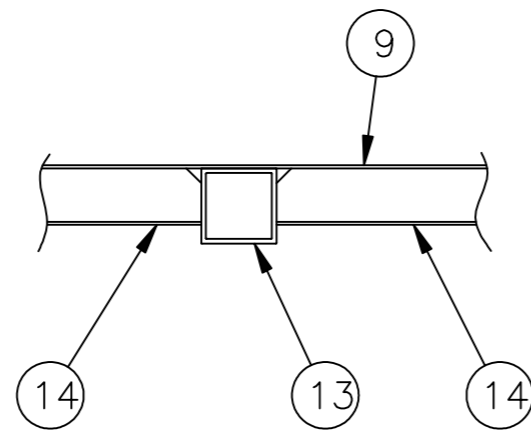
DETAIL H

ARROW J

ENSURE FWD & AFT TUBES
ARE OPEN AT THIS JOINT
TO ALLOW AIR PASSAGE



DETAIL G



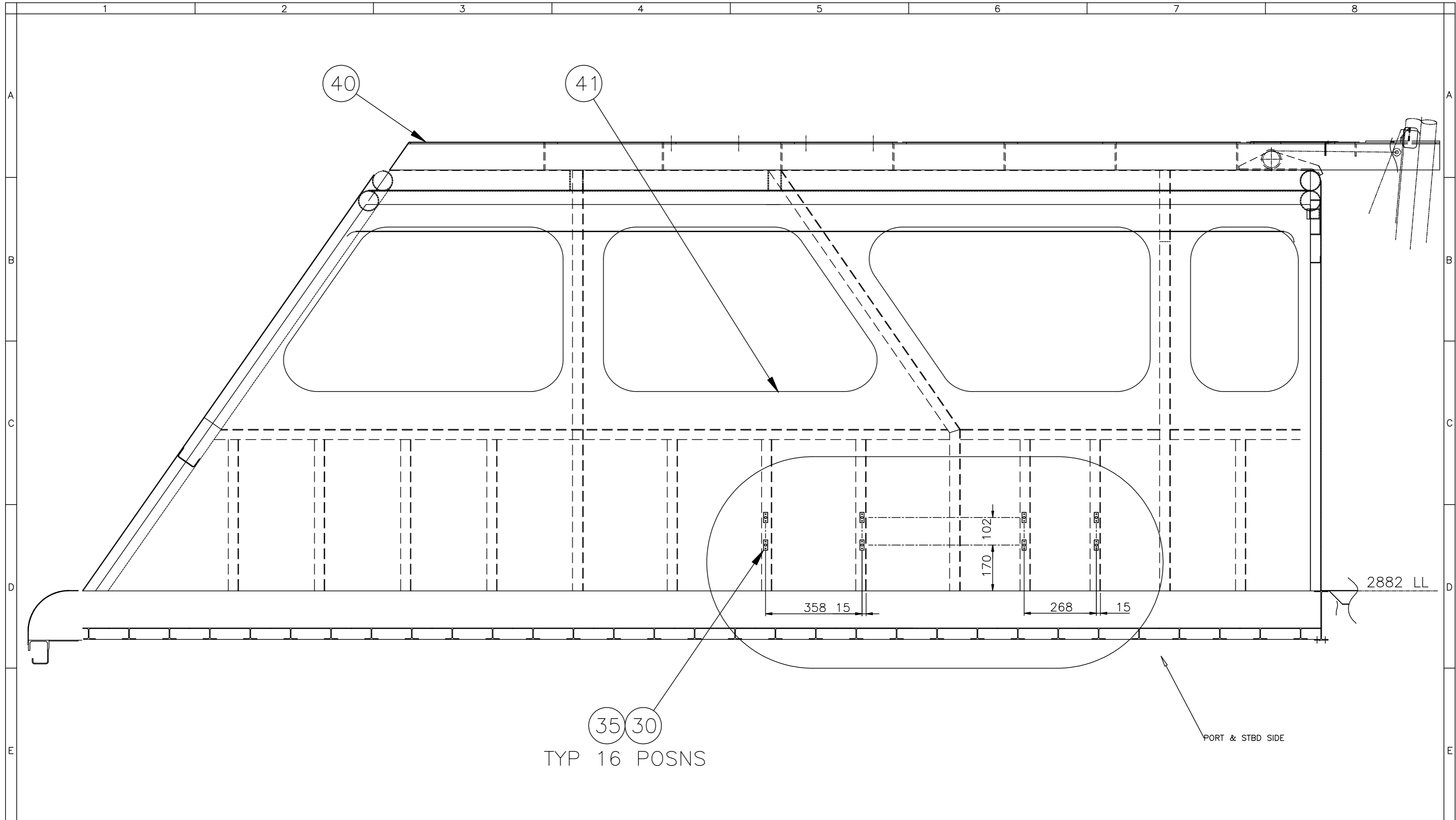
SECTION E-E

CANADIAN COAST GUARD
WAP1-88/400 CRAFT- #404

ISSUE	1	2
AMENDMENT		
AKD PROJECT No: 402		
AKD SECTIONS AA & BB AMENDED IN LINE WITH SHEET 1		
APPRO NAME		

2	ISSUE
5-04-2011	DATE
AKD	DRAWN
R Le Goff	CHKD
J Wersby	STRESS
R Barton	DESIGN
NOTES	NOTES
A2 594 x 420	FORMAT

<p>©</p> <p>THIS DRAWING IS THE PROPERTY OF GRIFFON-HOVERWORK LIMITED AND MAY NOT BE COPIED OR USED FOR ANY PURPOSE OTHER THAN THAT FOR WHICH IT WAS SUPPLIED WITHOUT THE EXPRESS WRITTEN AUTHORITY OF GRIFFON-HOVERWORK LIMITED</p>		<p>GRIFFON-HOVERWORK LIMITED</p> <p>ST. HELENS, ISLE OF WIGHT ENGLAND PO33 1YB</p> <p>TEL: (44) 1983 873220</p> <p>FAX: (44) 1983 872008</p>	
<p>THIRD ANGLE PROJECTION</p>		<p>Tolerances</p> <p>GHE5 009</p> <p>Scale</p> <p>1:2 @ A2</p>	
<p>AUTOCAD DRAWING</p> <p>NO MANUAL ALTERATIONS</p>		<p>Prot Treat</p> <p>GHE5 514</p> <p>SEE NOTES</p> <p>Material:</p> <p>NOTED</p>	
<p>FILE LOCATION:</p>		<p>DRAWING No : CONTROL CABIN</p>	
<p>All Dimensions in 'mm' unless otherwise stated.</p>		<p>DRAWING No : HTWAP1-88-H-4440</p>	
		<p>SHT 2</p>	
		<p>ISSUE : 2</p>	



CANADIAN COAST GUARD
WAP1-88/400 CRAFT- #404

APPO NAME AKD PROJECT No: 402 PAB ITEMS 40 & 41 ADDED. 2		ISSUE 2 05-04-2011 DATE		GRIFON-HOVERWORK LIMITED ST. HELENS. ISLE OF WIGHT ENGLAND PO33 1YB TEL: (44) 1983 873220 FAX: (44) 1983 872008		DRAWING No : CONTROL CABIN	
THIS DRAWING IS THE PROPERTY OF GRIFON-HOVERWORK LIMITED AND MAY NOT BE COPIED OR USED FOR ANY PURPOSE OTHER THAN THAT FOR WHICH IT WAS SUPPLIED WITHOUT THE EXPRESS WRITTEN AUTHORITY OF GRIFON-HOVERWORK LIMITED		AKD R Le Goff J Wersby R Barton NOTES A2 594 x 420 FORMAT		CHKD STRESS DESIGN NOTES FILE LOCATION:		Tolerances GHES 009 Scale 10:1 @ A2 All Dimensions in 'mm' unless otherwise stated.	
				Prot Treat GHES 514 SEE NOTES Material: NOTED		DRAWING No : HTWAP1-88-H-4440 SHT 3 ISSUE : 2	