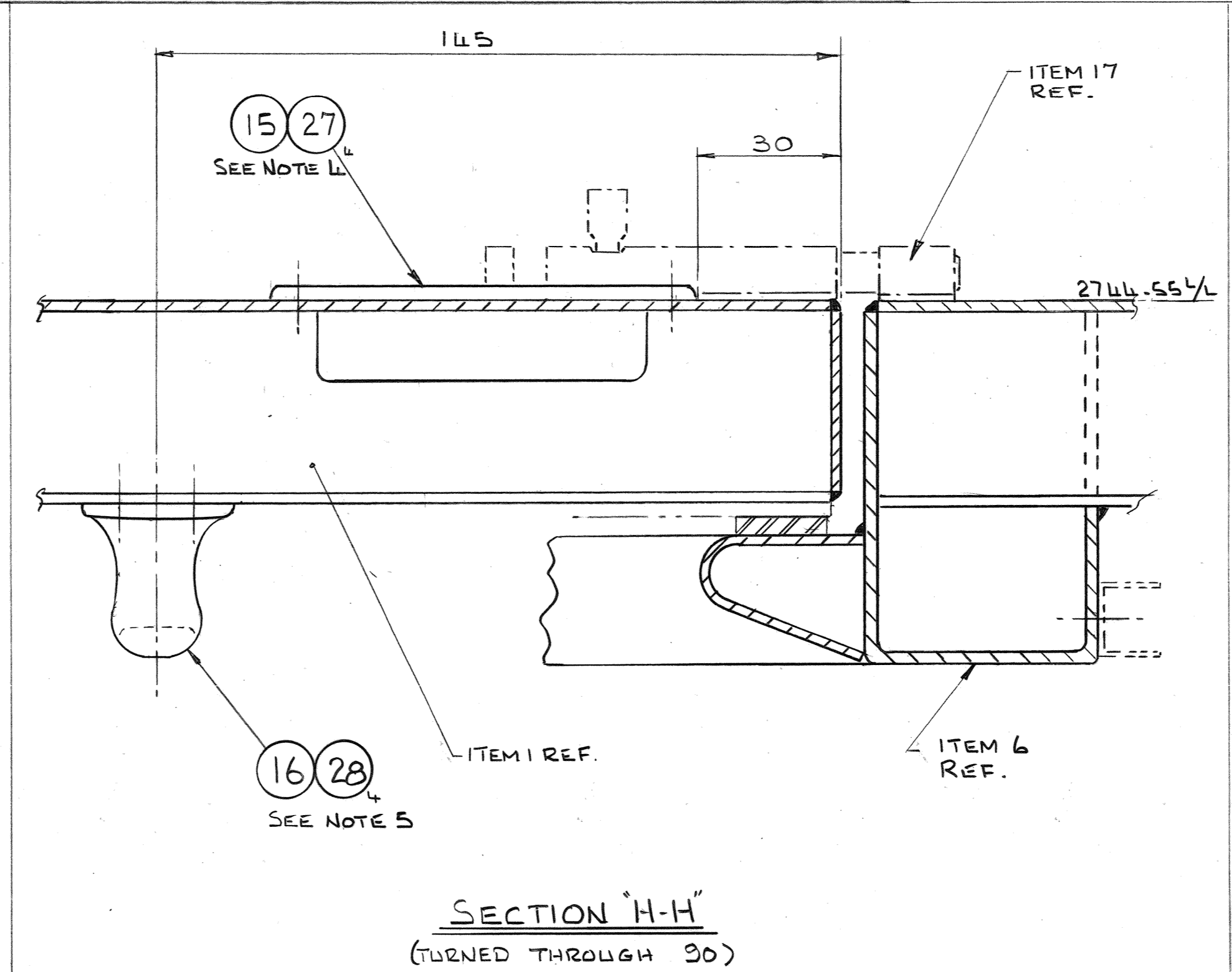
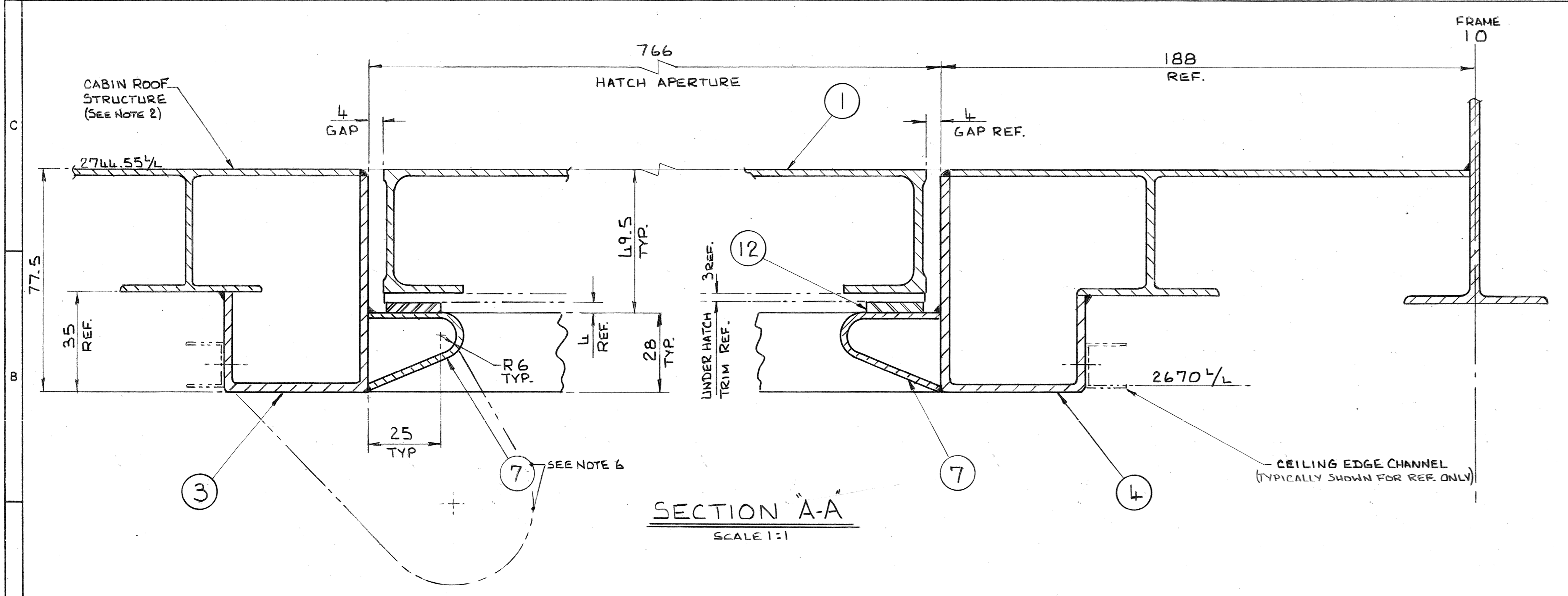


MAP REF	REF	DRAWING OR PART No.	DESCRIPTION	UNIT QTY AS DRAWN	OFF HAND	MATERIAL	REMARKS	Q SHEET	ISSUE DATE	ALTERATIONS	STRESS
C9	1	PAPI-88-H-1150	CABIN FLOOR ACCESS HATCH	1					12-6-97		
B/2	3	WAPI-88-H-L133/A	EDGE CHANNEL	1			MAKE FROM SECT. 9				
B/8	4			1							
G7	5			1							
G5	6			1							
B/11	7		SUPPORT CHANNEL	2		BS1170-50B3-0 X 27x4					
G5/7	8			2		BS1170-50B3-0 X 27x4					
D/6/5	9		GUSSET	1		BS1170-50B3-0 X 103x4					
	10										
B/10	12		SELF ADHESIVE FOAM RUBBER	1/2							
	13										
J/8	14	181-145	HINGE L"	2			R5 COMPONENTS				
C/6	15	B24-155	RECESSED HANDLE	1							
B/6	16	B26-240	HANDLE	1							
G/12	17		BARREL BOLT	1							
	18										
	19										
J/8	20		PVC TAPE	1/2							
	21										
	22										
J/7	23	A173-1-D	5/16 BOLT 10-32UNF	16							
J/7	24	A5 8600D	STIFFENIT 10-32UNF	16							
J/7	25	SP 125 D	WASHER	16							
	26										
C/5	27	AGS 2066-S12	5/16 3/32 RIVET	4			AVDEL				
B/6	28	AGS 2066-S14	5/16 3/32 RIVET	4			AVDEL				
G/12	29	SP 80	SNAPHEAD RIVET	1/2			DIA TO SUIT ITEM 17				
	30										

- NOTES:-**
- ALL WELDING TO BE IN ACCORDANCE WITH WGPS 550 APPENDIX 'B'
 - FOR CABIN ROOF CONSTRUCTION SEE DRAWING NO WAPI-88-H-4050
 - CENTRE HINGES AS SHOWN, ADJUSTING LOCALLY TO ALLOW BOLT HOLES TO MISS FLOOR PLANKING 'T' RIBS.
 - POSITION HANDLE ITEM 15 MIDWAY ALONG HATCH SIDE, BUT TAKING CARE TO MISS 'T' RIBS IN PLANKING, POSITION SHOWN AS INDICATED ON SECTION H-H & MAIN PLAN VIEW. CUTOUT HOLE IN HATCH TOPSKIN TO ACCEPT RECESSED DIA OF HANDLE. DRILL THROUGH THE 14 HOLES FOR SECURING, AND RIVET HANDLE IN POSITION USING ITEMS 27.
 - POSITION HANDLE ITEM 16 ON UNDERSIDE OF HATCH MIDWAY ALONG SIDE, BUT TAKING CARE TO MISS 'T' RIBS IN PLANKING, POSITION SHOWN AS INDICATED ON SECTION H-H & MAIN PLAN VIEW. DRILL THROUGH THE 14 SECURING HOLES AND RIVET HANDLE IN POSITION USING ITEMS 27.
 - THIS ITEM 7 (MR B11) WILL INCORPORATE THE ACCESS LADDER BRACKETS FOR DETAIL OF ASSEMBLY SEE DRAWING WAPI-88-18-4008.



HOVERWORK LTD
CANADIAN COASTGUARD
WAPI-88-400 - CRAFT #403

REFER TO
DIFF. TO ACCESS HATCH
HTWAPI-88-H-4133

FOR DIFFERENCES TO THIS DRAWING
FOLDED AND EXTRUDED SECTION
ALTERNATIVE SEE HTWAPI-88-D-4053

PROCESS SPECIFICATION
ALTERNATES SEE HTWAPI-88-D-4052

WEIGHT	SCALE	HEAT TREAT	PROT TREAT	LIMITS NOT SHOWN	ALL RIGHTS ARE RESERVED BY THIS DOCUMENT
	1:1 & 1:5			DHDS 003	THIS DRAWING MAY BE USED FOR THE PREPARATION OF MICROFILM OR REDUCED SIZE PRINTS
DRAWN	JR	MATERIALS	LAB	APPROVED	
CHECKED					
STRESS					
ENGINEER APPROVED					

DIMENSIONS IN MILLIMETRES

WESTLAND AEROSPACE AVIATION SUPPORT LIMITED EAST COWES, I.W.	SECURITY CLASSIFICATION SHEET 1 OF 1 SHEET
TITLE INSTALLATION OF CONTROL CABIN ACCESS HATCH	DRG N° WAPI-88-H-L133
FILE REF	