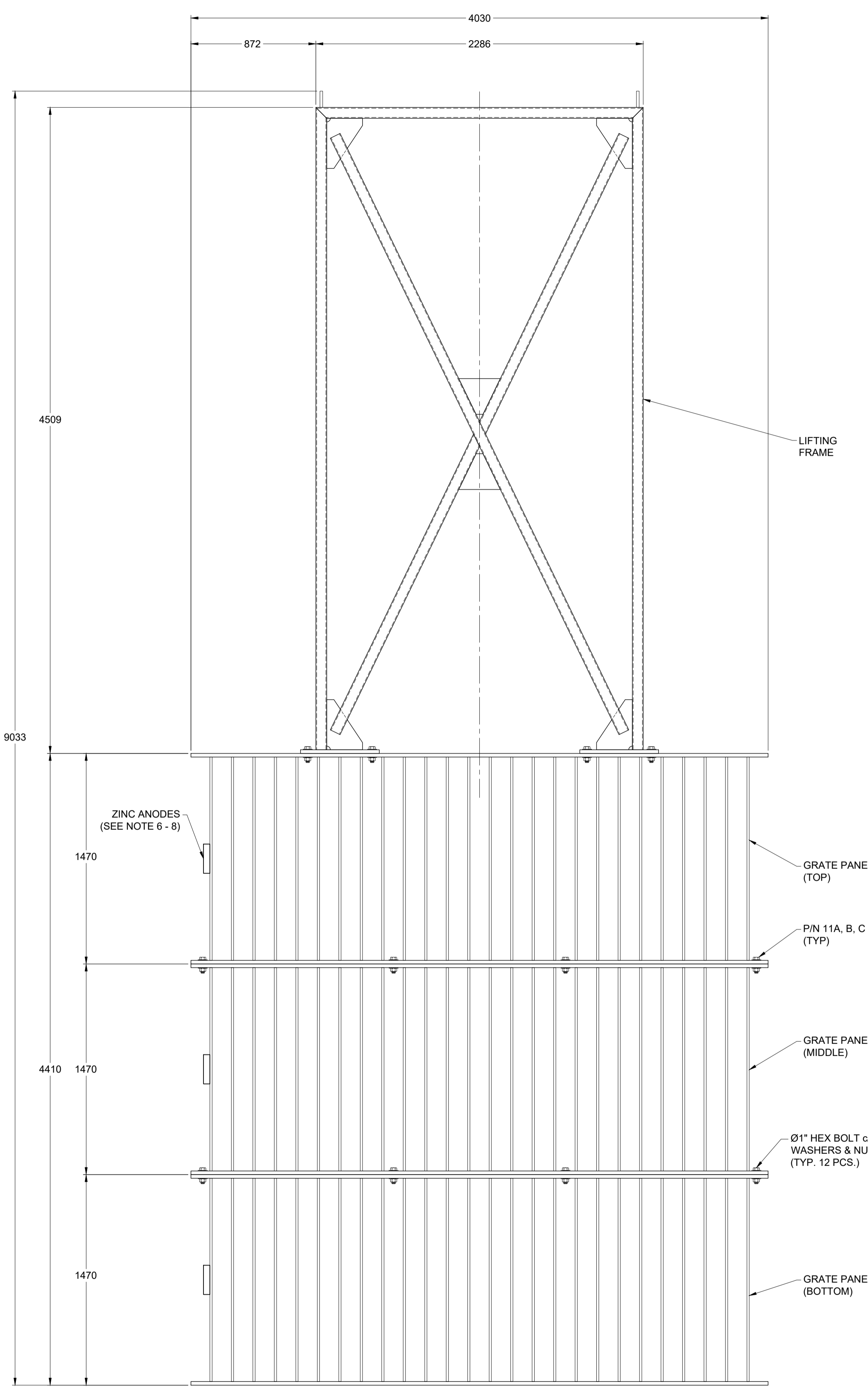
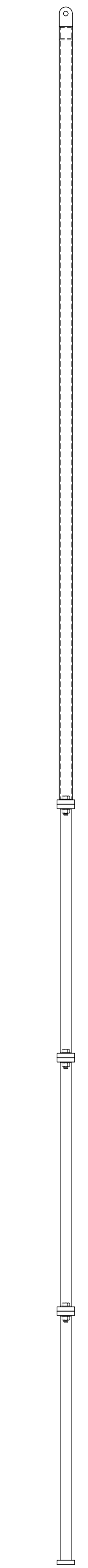


REVISIONS				
REV	ZONE	DESCRIPTION	DATE	BY APP
1		Changed Client name and Drawing Title	26-08-19	SNB



FRONT VIEW
SCALE: 1:20



SIDE VIEW
SCALE: 1:20

GENERAL NOTES

1. ALL DIMENSIONS IN MM U.N.O.
2. ALL STEEL TO BE NEW CSA G40.21M 300W.
3. SIZES OF STEEL SHAPES & PLATE ARE AS NOTED.
4. ALL WELDING PER CSA W59. USE DOUBLE CONTINUOUS FILLET WELDS U.N.O.
5. ALL SHARP EDGES TO BE GROUND SMOOTH PRIOR TO PAINTING.
6. AFTER WELDING, APPLY PAINT AS PER THE SPECIFICATION TO ALL SURFACES EXCEPT ANODES ANCHORS.
7. ANODES TO BE MARTYR ANODES, PART NUMBER CMZD77EURO, OR EQUIVALENT.
8. ZINC ANODES TO BE INSTALLED ON GRATE PANELS (QTY 1 PER PANEL) USING WELDED BOLTS OR THREADED ROD.
9. EACH SUB-ASSEMBLY TO BE PAINTED PRIOR TO FINAL ASSEMBLY.
10. ALL HSS TO BE MADE WATERTIGHT TO PREVENT INGRESS OF WATER.

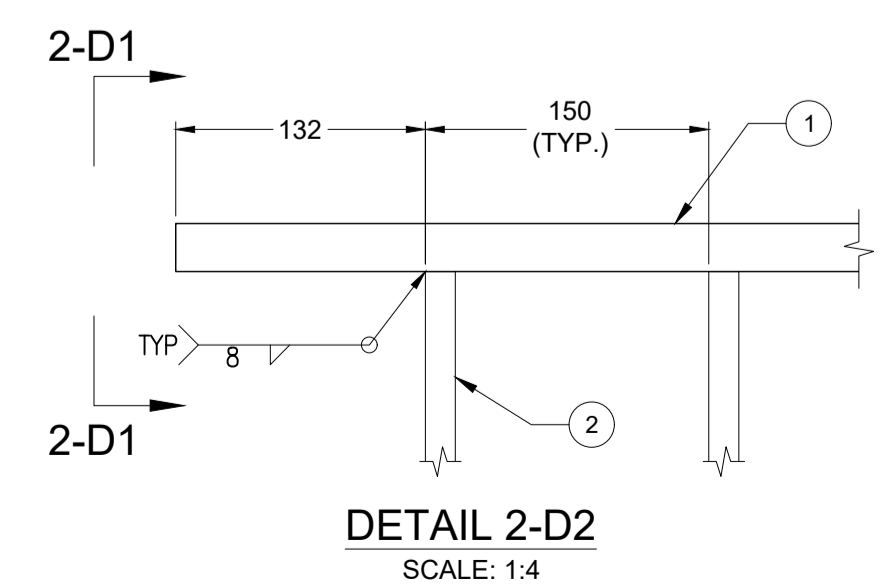
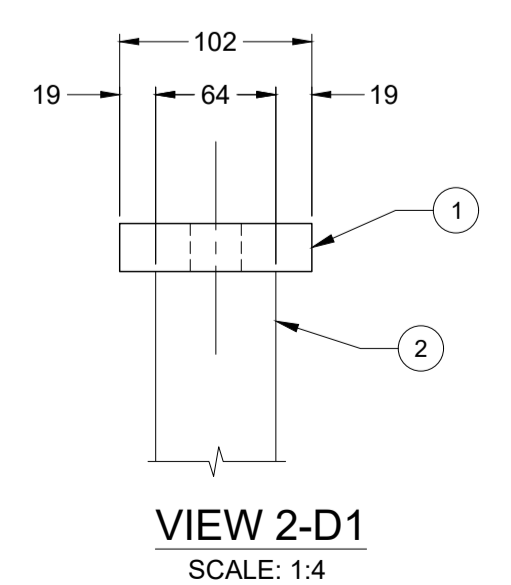
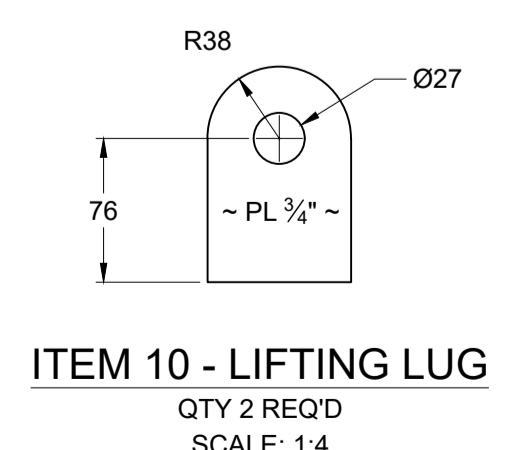
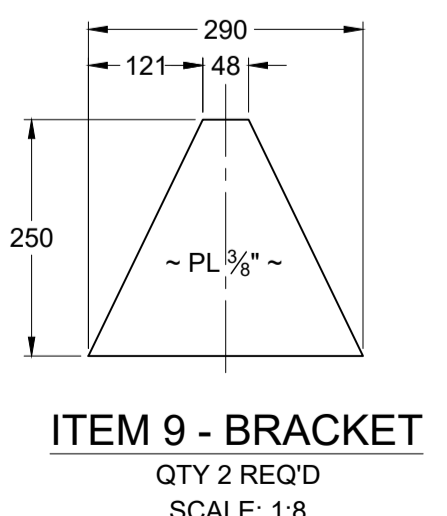
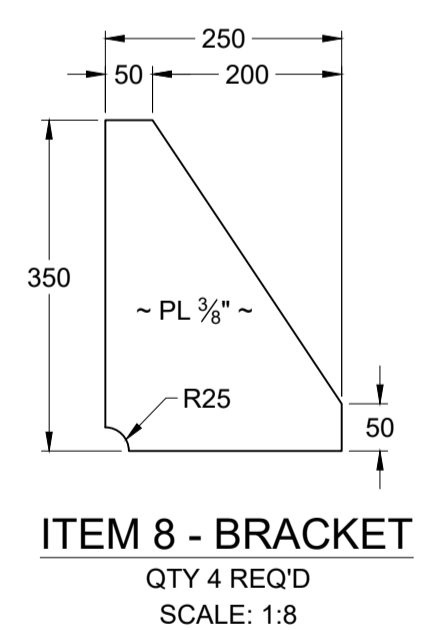
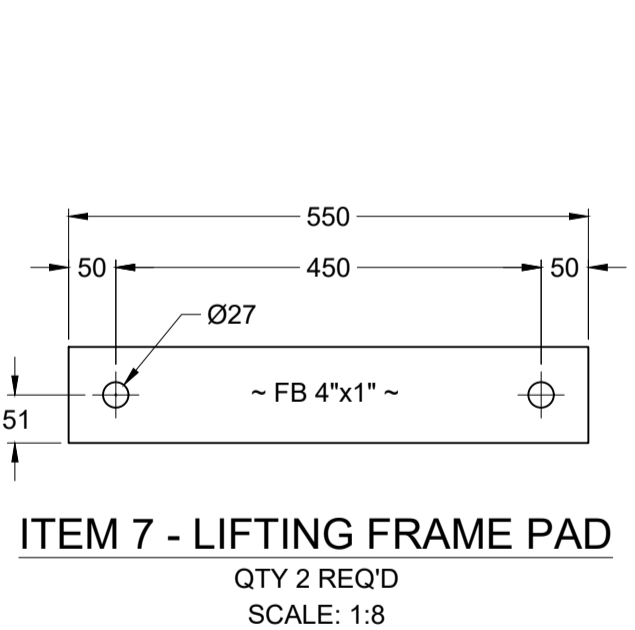
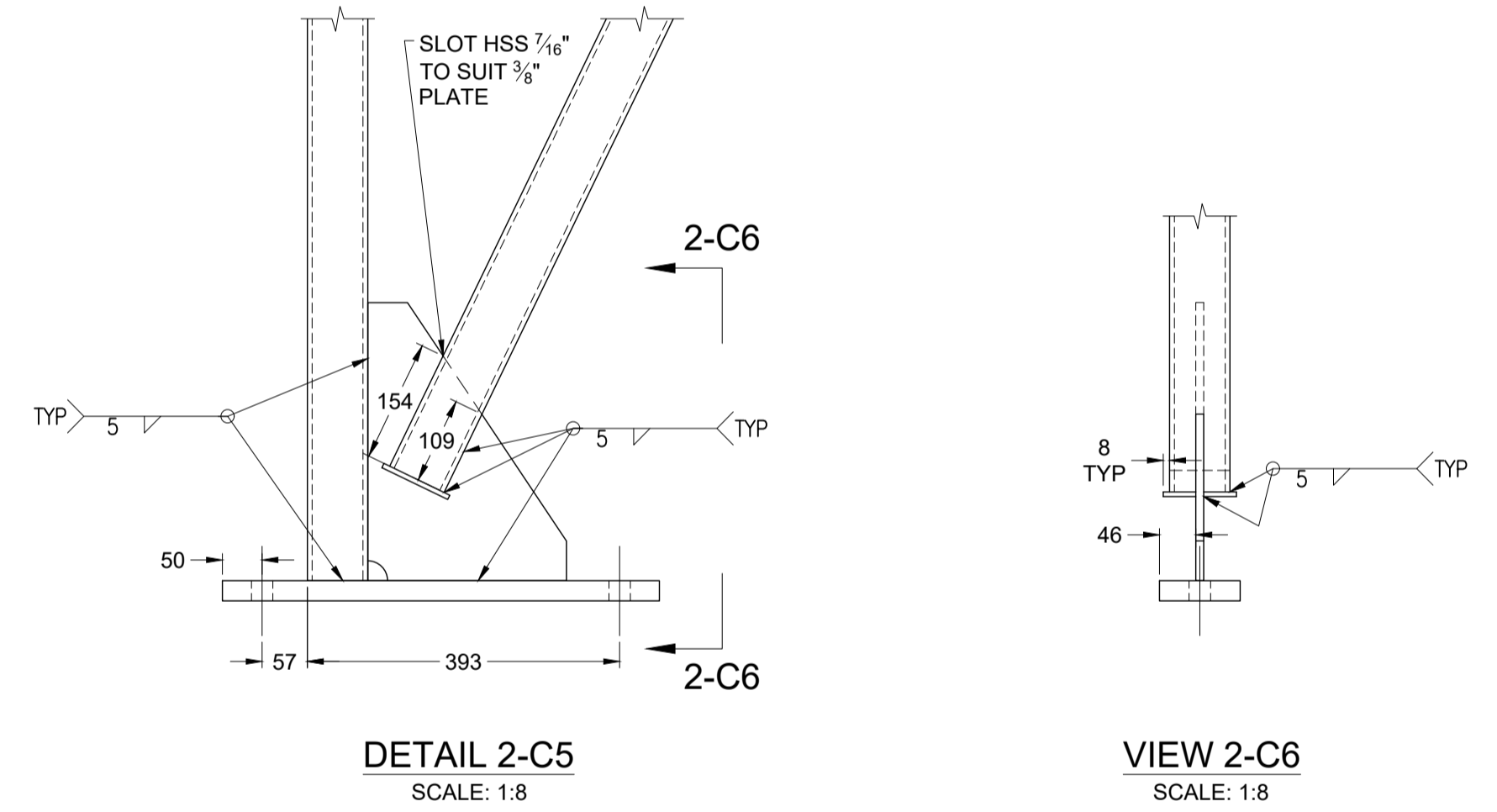
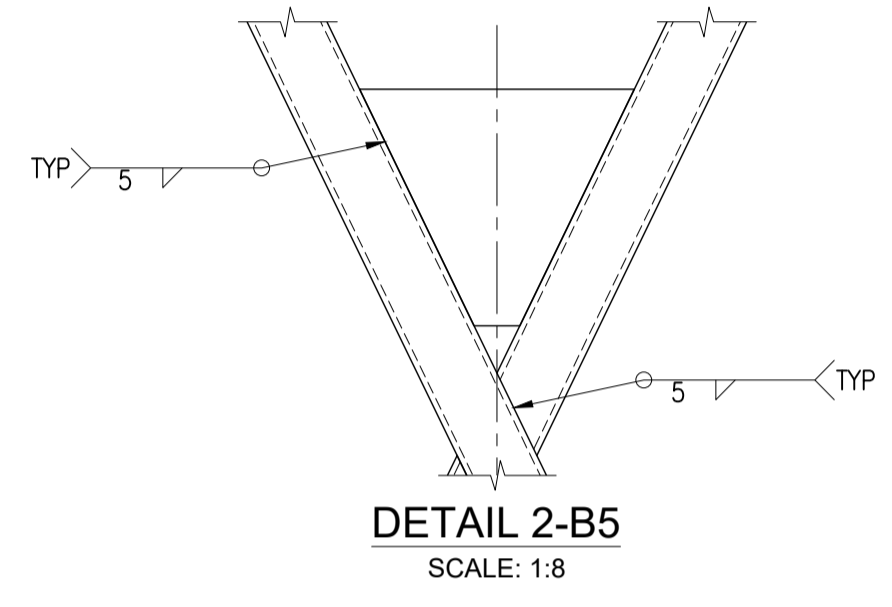
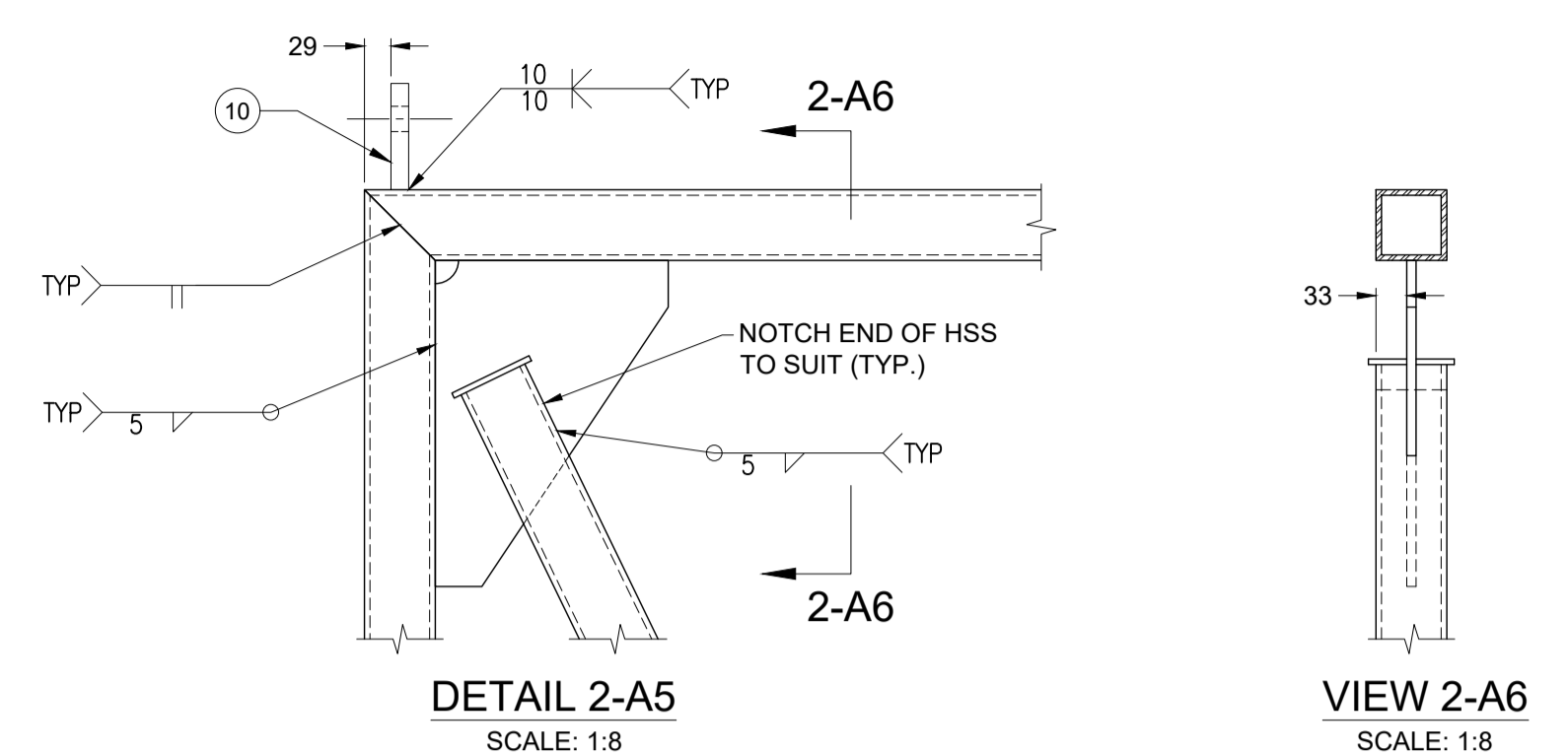
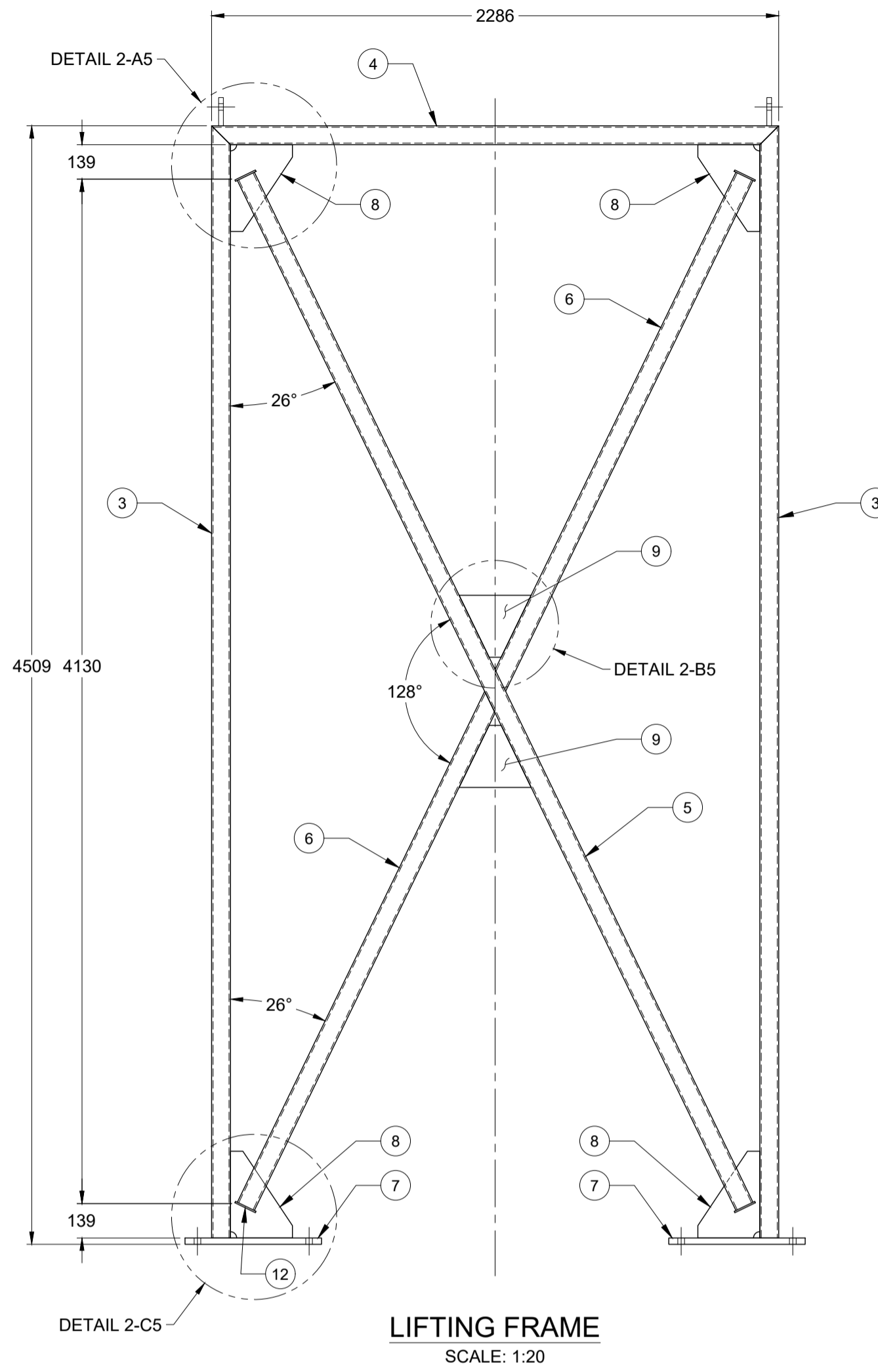
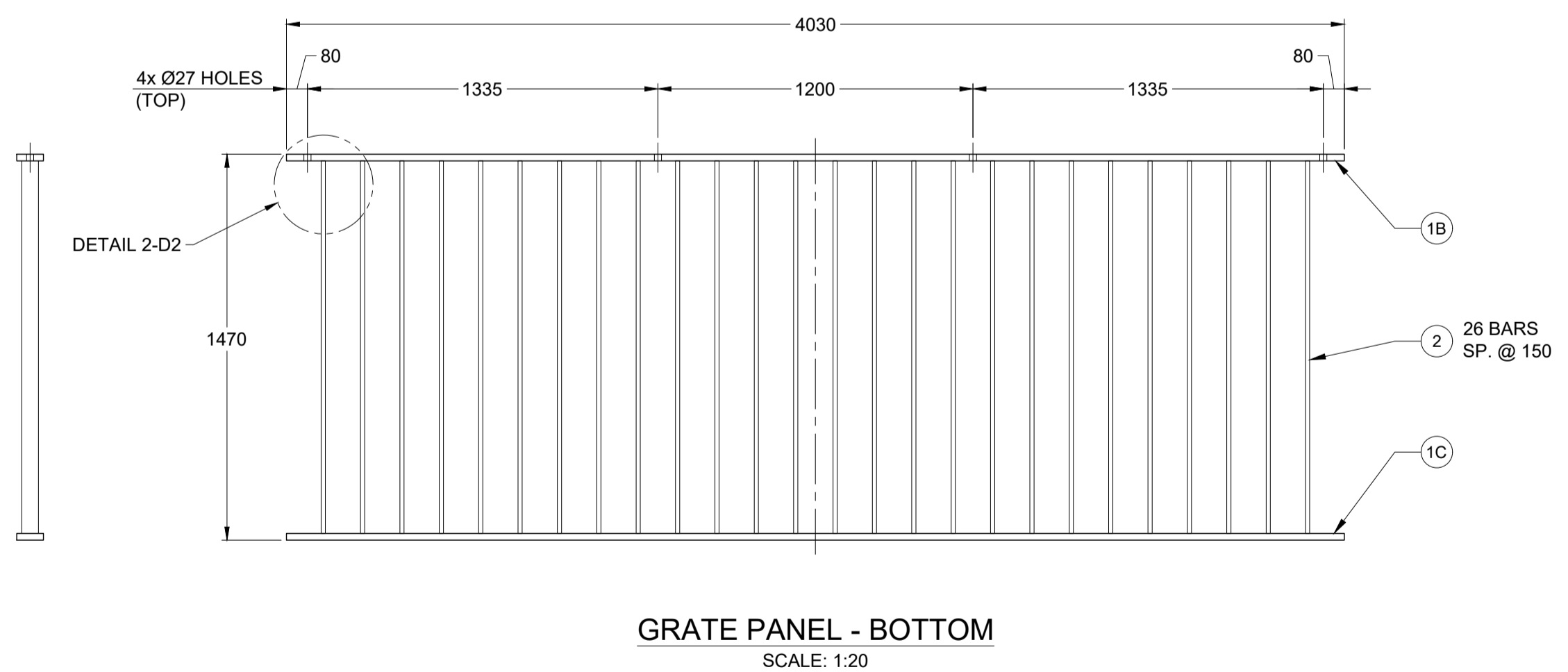
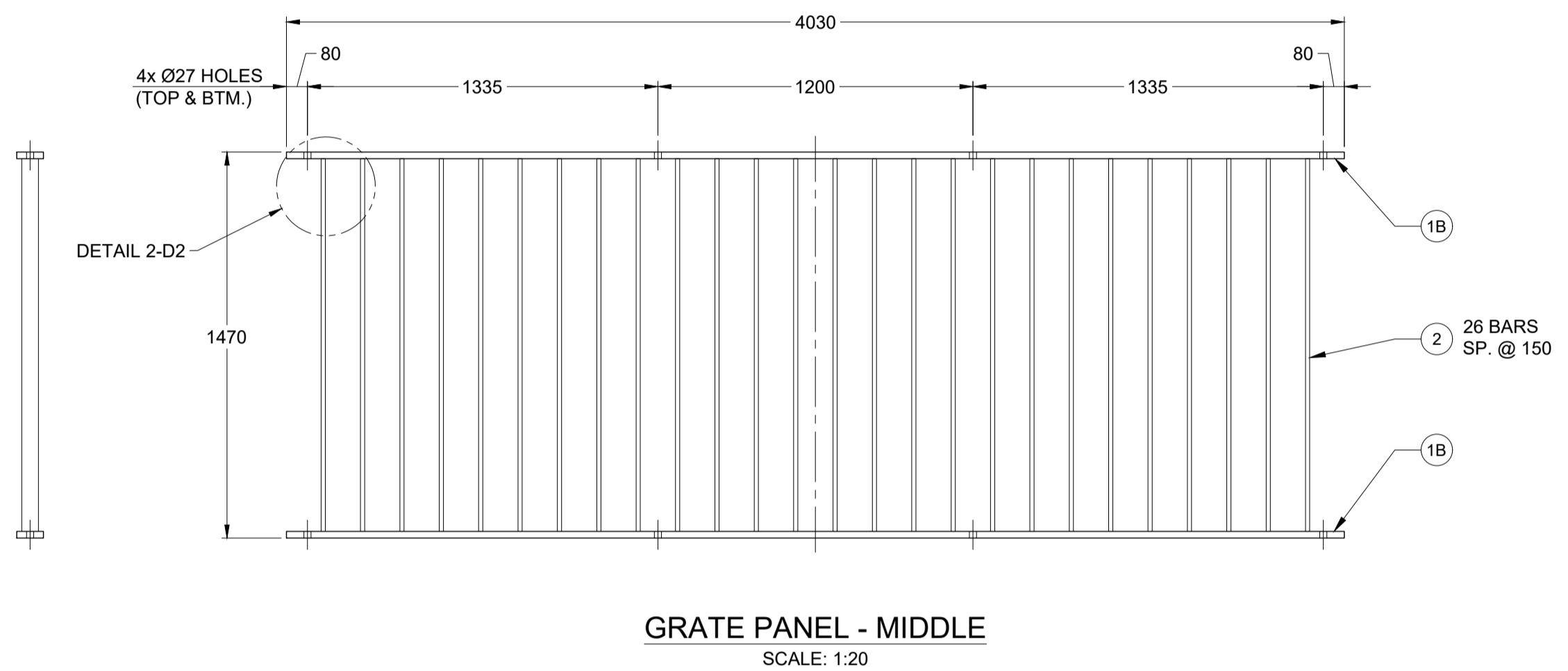
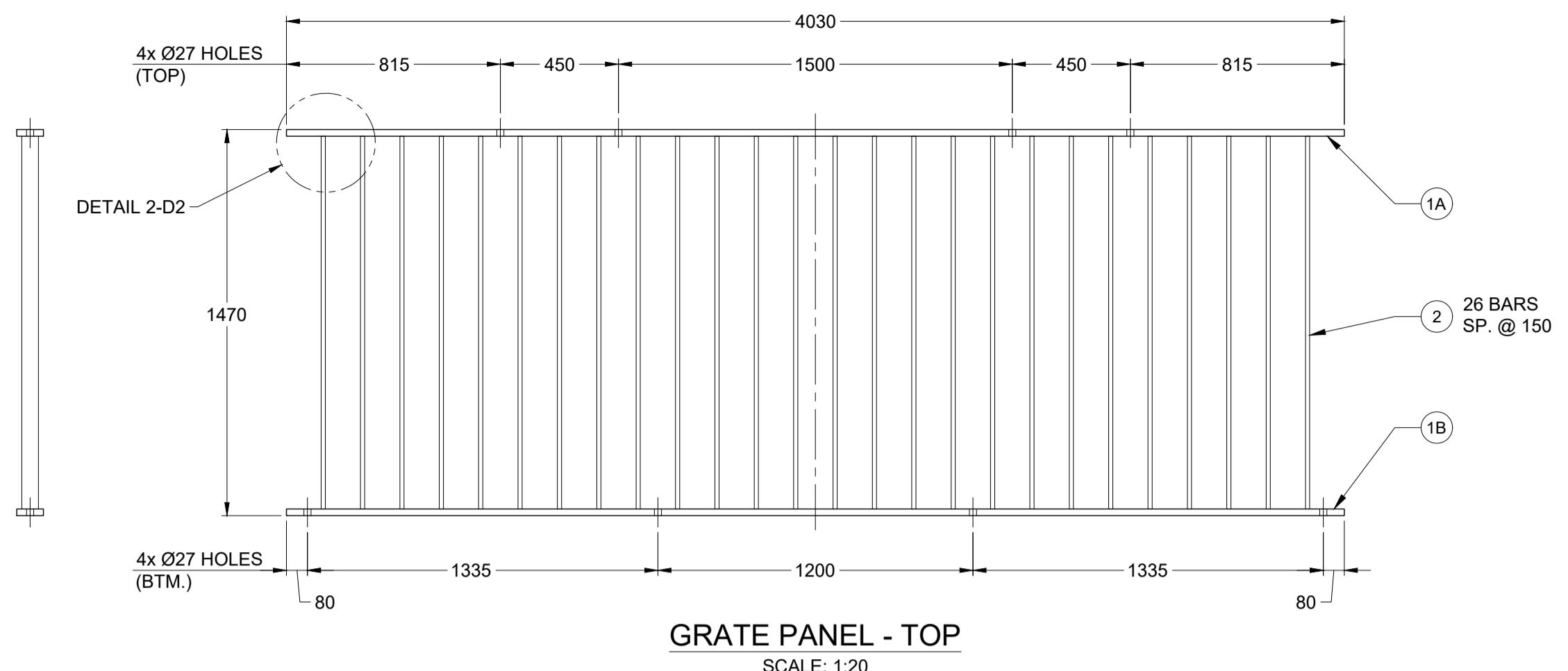
BILL OF MATERIALS

ITEM No.	QTY	DESCRIPTION	MATERIAL	LENGTH (mm)
1A, B, C	6	PANEL END BAR	STEEL FB 4" x 1"	4030
2	74	GRATING BAR	STEEL FB 2 1/2" x 3/8"	1420
3	2	LIFTING FRAME COLUMN	STEEL HSS 3" x 3" x 1/4"	4484
4	1	LIFTING FRAME TOP	STEEL HSS 3" x 3" x 1/4"	2286
5	1	LIFTING FRAME BRACE	STEEL HSS 3" x 3" x 1/4"	4612
6	2	LIFTING FRAME BRACE	STEEL HSS 3" x 3" x 1/4"	2288
7	2	LIFTING FRAME PAD	STEEL FB 4" x 1"	550
8	4	BRACKET	STEEL PL 3/8"	250x350
9	2	BRACKET	STEEL PL 3/8"	250x290
10	2	LIFTING LUG	STEEL PL 1/4"	76x114
11A	12	Ø1" HEX HEAD BOLT	STEEL - HEAVY DUTY GALVANIZED, GR 8, UNC THREAD	3" LG.
11B	12	Ø1" NUT	STEEL - HEAVY DUTY GALVANIZED, GR 8, UNC THREAD	
11C	24	Ø1" FLAT WASHER	STEEL - HEAVY DUTY GALVANIZED, GR 8, UNC THREAD	
12	8	WATERTIGHT CAPS FOR HSS	STEEL PL 1/4"	AS NEEDED

ALL INFORMATION CONTAINED OR DISCLOSED IN THIS DRAWING IS CONFIDENTIAL AND PROPRIETARY, AND IS THE EXCLUSIVE PROPERTY OF 3GA MARINE. THIS DESIGN INFORMATION IS RESERVED FOR THE EXCLUSIVE USE OF THE CLIENT. ANY REPRODUCTION, COMMUNICATION OR DISTRIBUTION OF THIS INFORMATION IS PROHIBITED WITHOUT THE WRITTEN CONSENT OF 3GA MARINE LTD.



PROJECT EGD GRATING ENGINEERING				
CLIENT PSPC (ESQUIMALT GRAVING DOCK)				
TITLE PROTECTION GRID - GRAVING DOCK INTAKE TUNNEL				
DRAWN BY NAP	DATE 1 AUG 19	CHECKED BY IGM	DATE 26 AUG 19	PROJECT NO. 19-103
SCALE AS NOTED	DRAWING NO. 19-103-087-01	SHEET NO. 1 OF 2	REV 1	



ALL INFORMATION CONTAINED OR DISCLOSED IN THIS DRAWING IS CONFIDENTIAL AND PROPRIETARY, AND IS THE EXCLUSIVE PROPERTY OF 3GA MARINE. THIS DESIGN INFORMATION IS RESERVED FOR THE EXCLUSIVE USE OF THE CLIENT. ANY REPRODUCTION, COMMUNICATION OR DISTRIBUTION OF THIS INFORMATION IS PROHIBITED WITHOUT THE WRITTEN CONSENT OF 3GA MARINE LTD.

3GA
MARINE LTD.

208 - 1497 Admirals Road
Victoria, BC
V9A 2P8
Canada

PROJECT EGD GRATING ENGINEERING				
CLIENT PSPC (ESQUIMALT GRAVING DOCK)				
TITLE PROTECTION GRID - GRAVING DOCK INTAKE TUNNEL				
DRAWN BY NAP	DATE dd mmm yy 1 AUG 19	CHECKED BY IGM	DATE dd mmm yy 19 AUG 19	PROJECT NO. 19-103
SCALE AS NOTED	DRAWING NO. 19-103-087-01		SHEET NO. 2 OF 2	REV 1