

USE THIS TABLE FOR ALTERNATIVES & AMENDMENTS
TO ITEMS ON WAP1-88-H-4041 SCHEDULE

REF	DRAWING OR PART NO	DESCRIPTION	UNIT QTY		MATERIAL REMARKS
			AS DRAWN	OPP HAND	
1	ø565 X 8	ACCESS HATCH / COVER	17		AL/ALLOY 5083-0
2	ø565 X 8	ACCESS HATCH / COVER	4		AL/ALLOY 5083-0
3	ø565 X 5	ACCESS HATCH / COVER	6		AL/ALLOY 5083-0
5	ø565 X 5	ACCESS HATCH / COVER	9		
6	DELETE	(ACCESS HATCH / COVER)			SUPERSEDED BY ITEM 3
12	316-F1/SPT38-M8-SP	M8 ANCHOR NUT	914		ST STL 316
13	DELETE	(RIVET)			SUPERSEDED, SEE NOTE 4
16	5/16"	WASHER	94		ZINC PLATED, STD GAUGE
23	DELETE				
24	DELETE				
25	3 THK	GASKET FOR ITEM 1-5	39		HES 538 TYPE 3
26	3 THK	GASKET FOR ITEMS 7 & 8	10		HES 538 TYPE 3
27	3 THK	GASKET FOR ITEMS 10 & 11	4		HES 538 TYPE 3
39	SPRING WASHER	FLAT SECTION SINGLE COIL	10		A4 ST STL
46	FLAT WASHER	FORM A	10		A4 ST STL
54	M8.0 x 70Lg	SKT HEAD CSK SCREW	81		A4 ST STL
60	HERCULES 2020	HATCH,QUICK RELEASE TYPE, HINGED	3		KORT PROPULSION LTD ESSEX.(01322-346346)
61	3 THK	CLOSING PLATE (AT IT.60)	7		AL/ALLOY 5083-0
62	39.5 x 3 THK	CLOSING PLATE (AT IT.60)	3		AL/ALLOY 5083-0
63	M8.0 x 65Lg	SKT HEAD CSK SCREW	26		A4 ST STL
64	M8.0 x 25Lg	SKT HEAD CSK SCREW	412		A4 ST STL
65	M8.0 x 25Lg	SKT HEAD CSK SCREW	298		A4 ST STL
66	48.5 x 4 THK	CLOSING PLATE	22		AL/ALLOY 5083-0
67	4 THK	CLOSING PLATE	42		AL/ALLOY 5083-0
70	M8.0 x 65Lg	SKT HEAD CSK SCREW	56		A4 ST STL
72	3 THK	GASKET FOR ITEM 88	3		
73	ø210 x 5	ACCESS HATCH	3		AL/ALLOY 5083-0
74	HTDWAP1-88-H-4057	DIFFERENCES TO HATCH FITTINGS	1		
75	TLP/K/530	ø5/32 CSK HD POP RIVET	128		MONEL
76	TLP/K/540	ø5/32 CSK HD POP RIVET	1380		MONEL
77	TLP/K/650	ø3/16 CSK HD POP RIVET	66		MONEL
78	TLE/D/530	ø5/32 DOME HD POP RIVET	184		MONEL
79	TLP/D/665	ø3/16 DOME HD POP RIVET	128		MONEL
80	HTDWAP1-88-H-4041/A	ACCESS HATCH COVER ø565x8	1		AL/ALLOY 5083-0
81	HTDWAP1-88-H-4041/B	CLOSING PLATE	10		AL/ALLOY 5083-0 4 THK
82	HERCULES 2020	HATCH,QUICK RELEASE, NON-HINGED	2		KORT PROPULSION LTD ESSEX.(01322-346346)
83	34x3 THK	CLOSING PLATE	1		AL/ALLOY 5083-0
84	WM08AA4	M8 WASHER	32		A4-70 ST STL
85	NMC08DTA4	M8 LOCKNUT	32		A4-70 ST STL
86	H401901B1	M8 LFS WASHER	32		
87	5/8" o/D x 3/8" I/D x 34	DISTANCE TUBE	32		AL/ALLOY BS1474 6082-T6
88	HTDWAP1-88-H-4041/C	ACCESS HATCH ø280x5	6		AL/ALLOY 5083-0
89					

THIS DRAWING TO BE USED IN
CONJUNCTION WITH AND ALL OTHER
INFORMATION IS IDENTICAL TO
WAP1-88-H-4041 REV 4
UNLESS STATED BELOW

DIFFERENCES TO WAP1-88-H-4041 DRAWINGS:

SHT 1: 1 OFF ACCESS HATCH ASSY DELETED AT FR 7.1 TO 8
(COMPRISES ITEMS 3,12,13,25,64,66,& 67)
SUPERSEDED BY 'HERCULES 2020 HATCH ITEM 60,
FOR DETAILS SEE SHT.2 OF THIS DRG.

2 OFF ACCESS HATCH ASSEMBLIES ADDED AT FR 7.1 TO 8
FOR DETAILS SEE SHT.2 OF THIS DRAWING

ITEM 80 ADDED IN PLACE OF ITEM 1 AT FR.5.2 TO 5.3 CENTRE.
ALL DIMENSIONS AS PER ITEM 5 EXCEPT THICKNESS TO BE 8 THK.

'HERCULES HATCH' ITEM 82 ADDED FR.5.1 TO 5.2 & AT FR.15
TO 16 (SEE SHT 4 OF THIS DRAWING).

SHT 2: SECTION C-C ITEM 15 SUPERSED BY ITEM 88.
ITEM 13 IS SUPERSEDED BY ITEM 77.

SECTIONS D-D & S-S ITEM 13 IS SUPERSEDED BY ITEM 76,
& COVER CHAMFER RELOCATED TO UNDERSIDE (SEE SHT.3 OF THIS
DRG.)

SHT.3: SECTION G-G ITEM 13 IS SUPERSEDED BY ITEM 76.

SHT.4: DETAILS X & Y ITEM 13 IS SUPERSEDED BY ITEM 79.

SHT.5: SECTIONS N-N & P-P ITEM 13 IS SUPERSEDED BY ITEM 78.

SHT.6: SECTION V-V ITEM 13 IS SUPERSEDED BY ITEM 76
SECTION Y-Y ITEM 13 IS SUPERSEDED BY ITEM 75, &
COVER CHAMFER RELOCATED TO UNDERSIDE (SEE SHT.3).
BALLOON 67 AT SECTION V-V SHOULD READ BALLOON 81

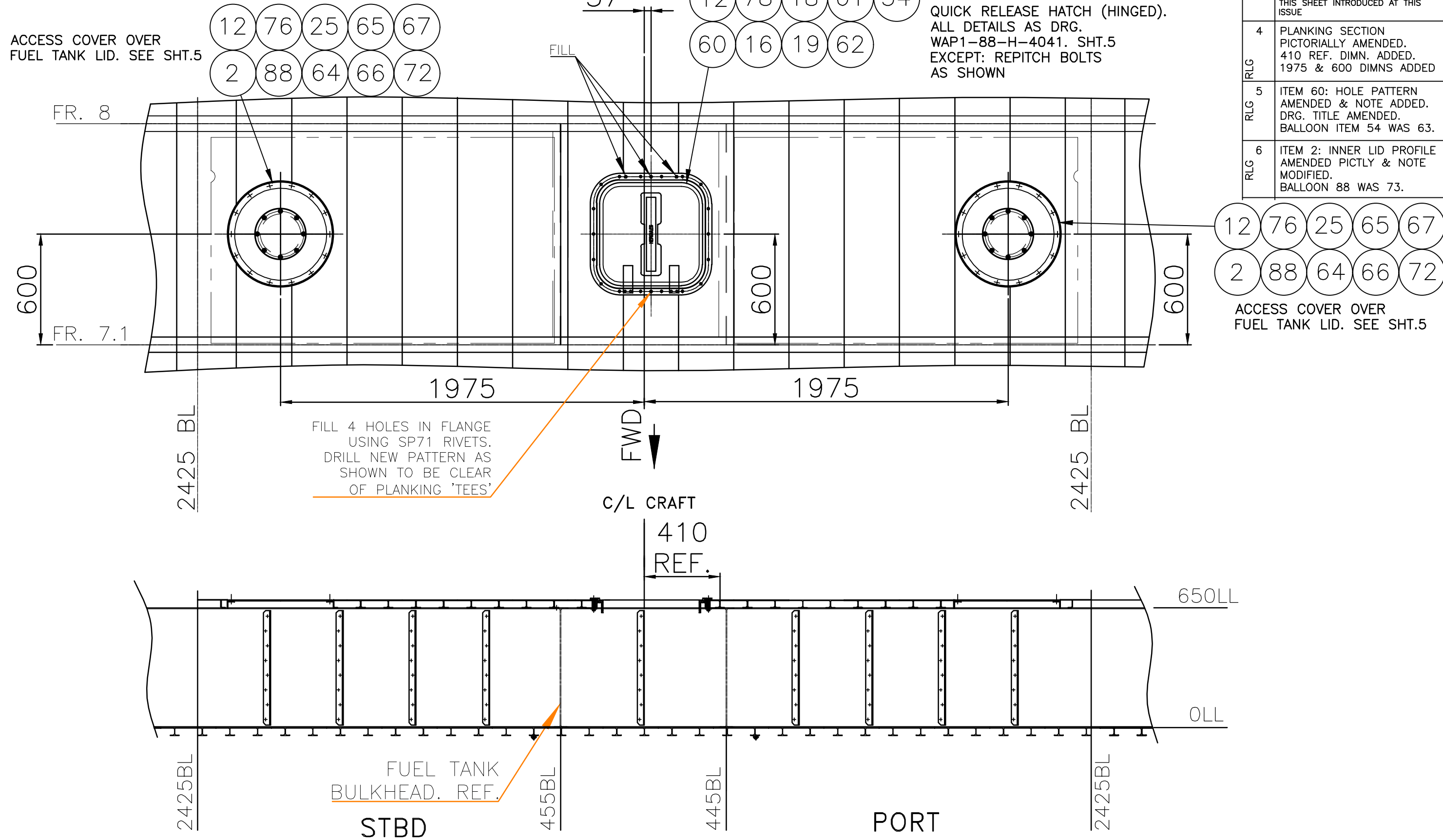
GENERAL NOTES:

- FOR FOLDED & EXTRUDED SECTION ALTERNATES SEE HTWAP1-88-D-4053
- FOR PROCESS SPECIFICATIONS SEE HTWAP1-88-D-4052
- FOR ALTERNATE MECHANICAL FASTENERS NOT SHOWN SEE HTWAP1-88-D-4054
- ITEM 13 4807-0411 RIVET IS SUPERSEDED BY ITEMS 75,76,77,78,& 79.
SEE DIFFERENCES NOTES ABOVE & SHEET 2 OF THIS DRAWING.
- DISTANCE TUBES ITEMS 18 & 87 TO BE INSTALLED USING SIKAFLEX TO HES 083
TYPE B (INSTEAD OF ARALDITE ITEMS 23 & 24)

REV	AMENDMENT
1	PROJECT No: 401
2	NOTE ADDED FOR HATCH LOCATION FR.3 TO 3.1
3	ITEM 2 ADDED,QTY WAS 2 ITEM 3 ADDED,QTY WAS 5. ITEM 12 QTY ADDED. ITEM 16 QTY WAS 40. ITEM 25 ADDED,QTY WAS 39, MATL. WAS SGS1086-303. ITEMS 26 & 27 ADDED - MATL WAS SGS1086-303. ITEM 60 ADDED, QTY WAS 2, SPEC & SUPPLIER AMENDED. ITEM 64 QTY WAS 398 ITEM 66 ADDED,QTY WAS 22 ITEM 67 ADDED,QTY WAS 42 ITEMS 75,76,77,78,& 79 ADDED. DIFFERENCES NOTES ADDED. GENERAL NOTE 4 ADDED. THIS SHEET WAS SIZE A4. SHT.2 ADDED.
4	ITEM 1 ADDED,QTY WAS 18. ITEM 2 WAS 5 THK IN ERROR. ITEM 3 QTY WAS 4. ITEM 6 DELETED. ITEMS 80 & 81 ADDED. NOTE FOR ITEMS 80 & 81 ADDED TO DIFFERENCES NOTES 1 & 6 RESP.
5	DRG. ISSUE INDICES UPDATED.
6	DIFFERENCES NOTE 1: RELOCATION OF ACCESS HATCHES FR.3-3.1 DELETED.
7	SHEET 3 ADDED. CHAMFER RELOCATION NOTES ADDED FOR SHTS. 2 & 6.
8	SHEET 4 ADDED. ITEMS 82 TO 87 ADDED. ITEM 5 QTY WAS 10 OFF. ITEM 23 DELETED. ITEM 25 QTY WAS 40 OFF. ITEM 61 QTY WAS 6 OFF. ITEM 62 QTY WAS 2 OFF. ITEM 66 QTY WAS 23 OFF. ITEM 67 QTY WAS 43 OFF. ITEM 70 WAS 40 OFF. ITEM 72 QTY WAS 4 OFF. ITEM 73 QTY WAS 4 OFF. GENERAL NOTE 5 ADDED.
9	SHEET 5 ADDED. ITEM 73 DELETED ITEM 88 ADDED. ITEM 12 QTY WAS 902 ITEM 77 QTY WAS 42 NOTE 2: ITEM 88 WAS 73

CANADIAN COAST GUARD
WAP1-88/400 CRAFT- #403

9	5	Used On:	Qty:	© THIS DRAWING IS THE PROPERTY OF HOVERWORK LIMITED AND MAY NOT BE COPIED OR USED FOR ANY PURPOSE OTHER THAN THAT FOR WHICH IT WAS SUPPLIED WITHOUT THE EXPRESS WRITTEN AUTHORITY OF HOVERWORK LIMITED	9	ISSUE	DRAWING TITLE : DIFFERENCES TO MANHOLES UNIT 31 DRAWING No : HTDWAP1-88-H-4041	SHT	OF	ISSUE :
8	4				17/06/07	DATE		1	5	9
8	3				UPS/RLG	DRAWN				
6	2				Mark Doyle	CHKD				
9	1				Lee Mendenhall	STRESS				
ISSUE	SHEET	HTWAP1-88-H-4001	1	R. Burton	DESIGN					
				NOTES	NOTES					



HERCULES 2020
QUICK RELEASE HATCH (HINGED).
ALL DETAILS AS DRG.
WAP1-88-H-4041. SHT.5
EXCEPT: REPITCH BOLTS
AS SHOWN

REV	AMENDMENT
3	PROJECT #401 THIS SHEET INTRODUCED AT THIS ISSUE
4	PLANKING SECTION PICTORIALLY AMENDED. 410 REF. DIMN. ADDED. 1975 & 600 DIMNS ADDED
5	ITEM 60: HOLE PATTERN AMENDED & NOTE ADDED. DRG. TITLE AMENDED. BALLOON ITEM 54 WAS 63.
6	ITEM 2: INNER LID PROFILE AMENDED PICTLY & NOTE MODIFIED. BALLOON 88 WAS 73.

FILL 4 HOLES IN FLANGE
USING SP71 RIVETS.
DRILL NEW PATTERN AS
SHOWN TO BE CLEAR
OF PLANKING 'TEES'

ACCESS COVER OVER
FUEL TANK LID. SEE SHT.5

LOOKING AFT ON FR.8

CANADIAN COAST GUARD
WAP1-88/400 CRAFT- #403

THIS SHEET SHOWS THE ADDITION OF TWO FUEL TANK ACCESS HATCHES (ITEM 2) BETWEEN FRAMES 7.1 & 8, AND THE INTRODUCTION OF A 'HERCULES 2020' HINGED QUICK RELEASE HATCH (ITEM 60) IN PLACE OF ONE CIRCULAR HATCH (ITEM 3).

© THIS DRAWING IS THE PROPERTY OF HOVERWORK LIMITED AND MAY NOT BE COPIED OR USED FOR ANY PURPOSE OTHER THAN THAT FOR WHICH IT WAS SUPPLIED WITHOUT THE EXPRESS WRITTEN AUTHORITY OF HOVERWORK LIMITED	6	ISSUE	DRAWING TITLE : DIFFERENCES TO MANHOLES UNIT NO 31 DRAWING No : HTDWAP1-88-H-4041
	10/05/07	DATE	
	R.Le Goff	DRAWN	
	Nick Boyle	CHKD	
	Lee Mumberson	STRESS	
	R. Barton	DESIGN	
NOTES	NOTES		

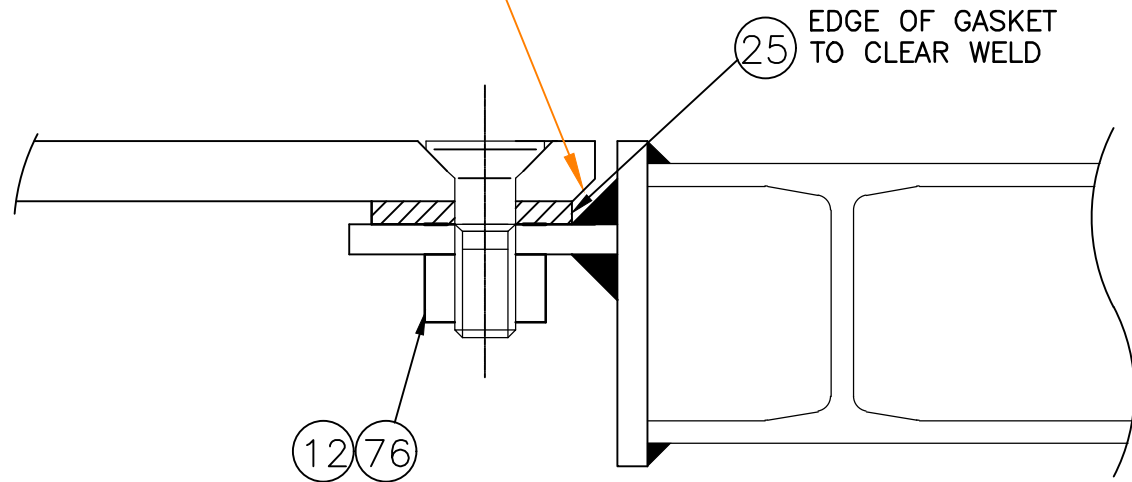
HTDWAP1-88-H-4041

SHT OF ISSUE :
2 OF 6

REV	AMENDMENT
7	PROJECT #401 THIS SHEET INTRODUCED AT THIS ISSUE
8	DRG. TITLE AMENDED

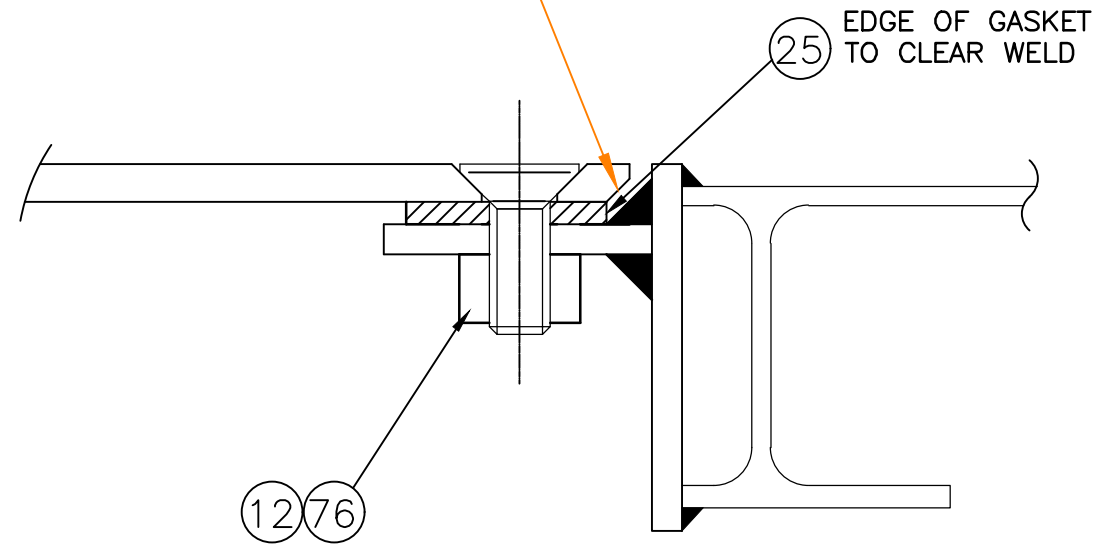
AMENDMENTS TO WAP1-88-H-4041 SHT.2

3x45° CHAMFER ON UNDERSIDE
OF ACCESS COVER ONLY



SECTION S-S

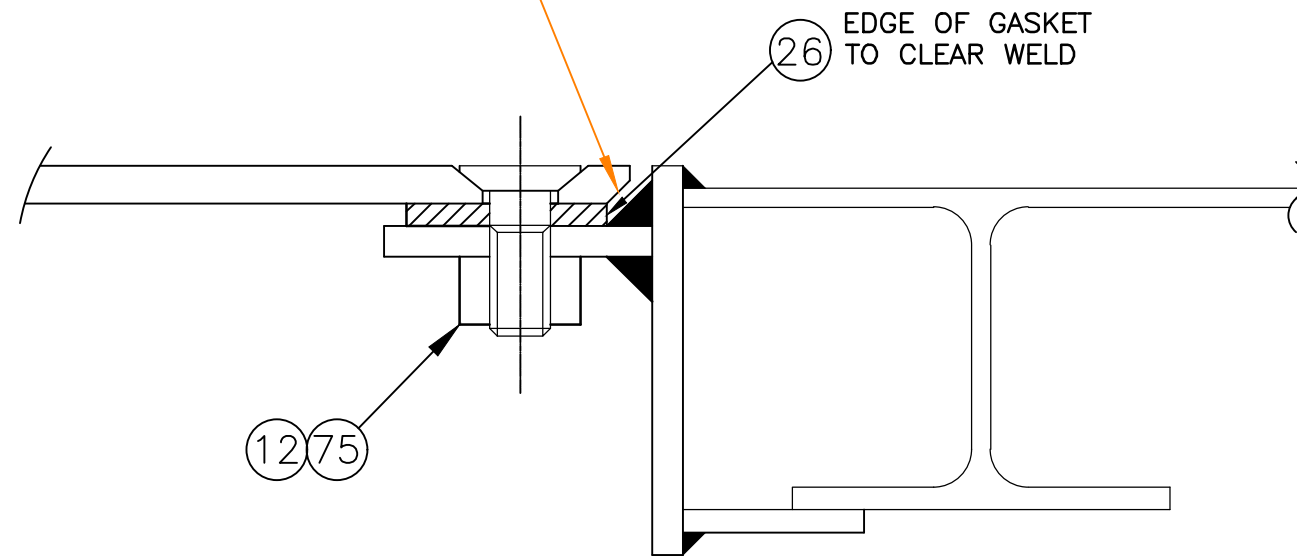
3x45° CHAMFER ON UNDERSIDE
OF ACCESS COVER ONLY



SECTION D-D

AMENDMENTS TO WAP1-88-H-4041 SHT.6

3x45° CHAMFER ON UNDERSIDE
OF ACCESS COVER ONLY

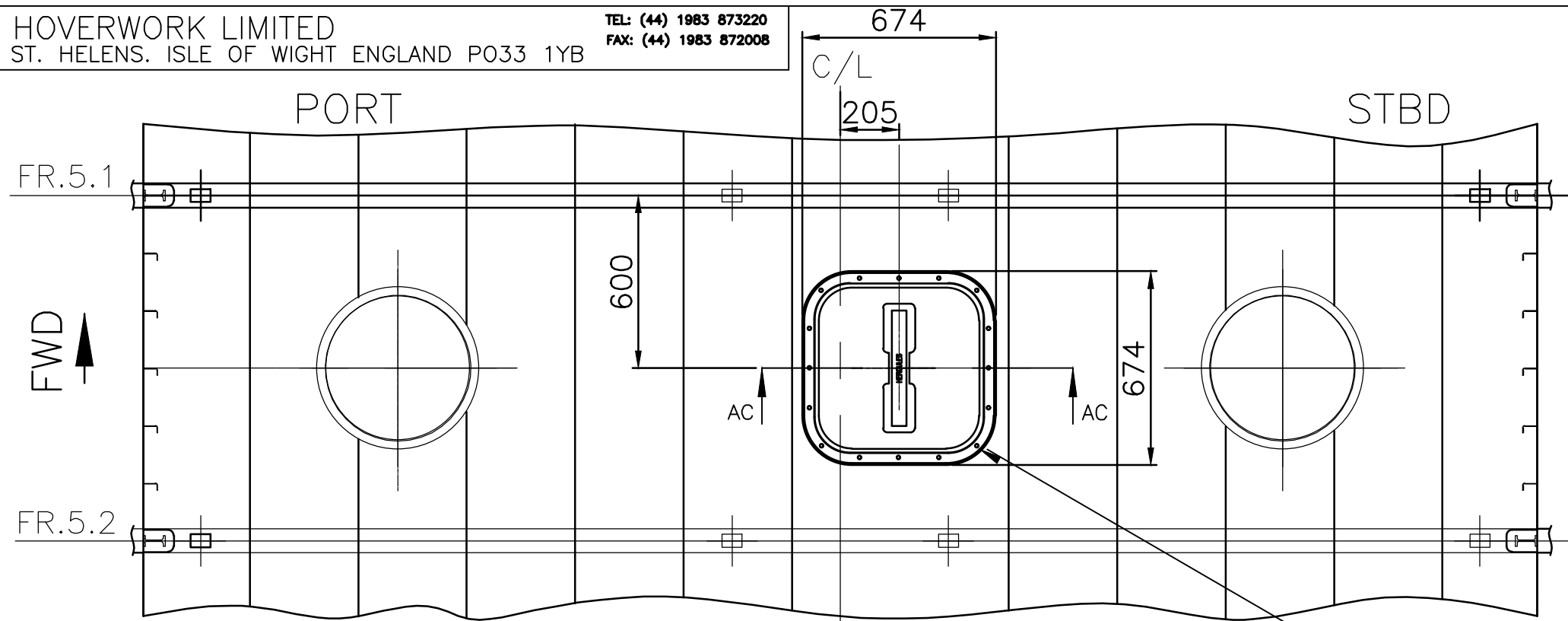


SECTION V-V

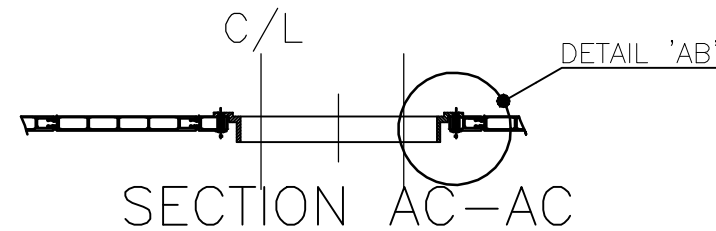
CANADIAN COAST GUARD
WAP1-88/400 CRAFT- #403

© THIS DRAWING IS THE PROPERTY OF HOVERWORK LIMITED AND MAY NOT BE COPIED OR USED FOR ANY PURPOSE OTHER THAN THAT FOR WHICH IT WAS SUPPLIED WITHOUT THE EXPRESS WRITTEN AUTHORITY OF HOVERWORK LIMITED	8	ISSUE	DRAWING TITLE : DIFFERENCES TO MANHOLES UNIT NO 31	DRAWING No : HTDWAP1-88-H-4041	SHT OF ISSUE : 3 OF 8
	11/10/07	DATE			
	R.Le Goff	DRAWN			
	P.A. Blanchard	CHKD			
	Lee Mumberson	STRESS			
R. Barton	DESIGN				
	NOTES	NOTES			

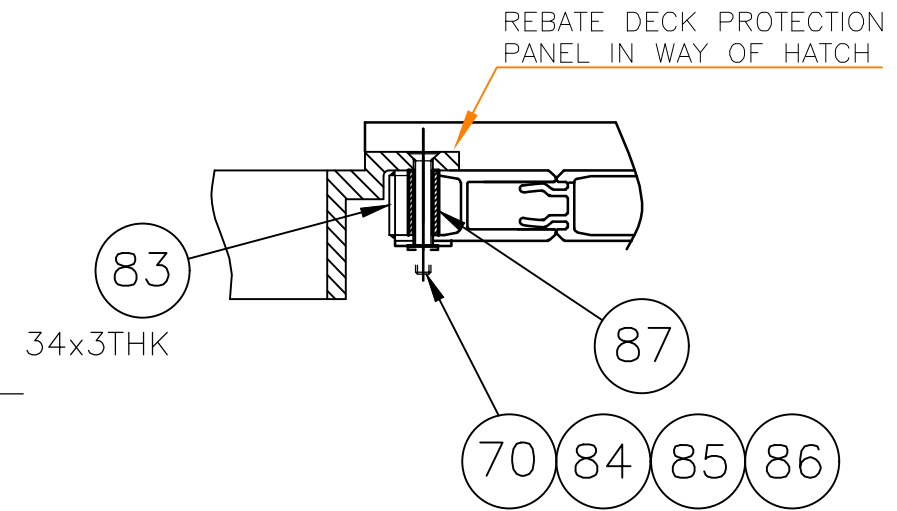
REV	AMENDMENT
8	PROJECT #401
RLG	THIS SHEET INTRODUCED AT THIS ISSUE



PLAN VIEW ON WELL DECK

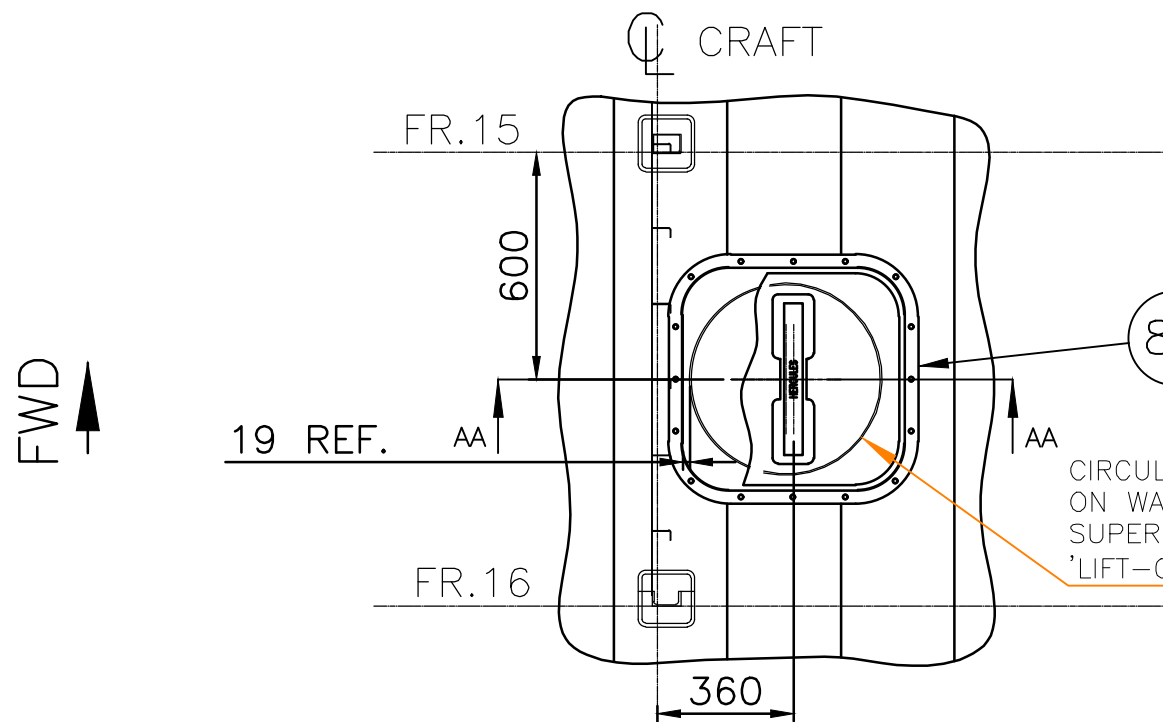


SECTION AC-AC

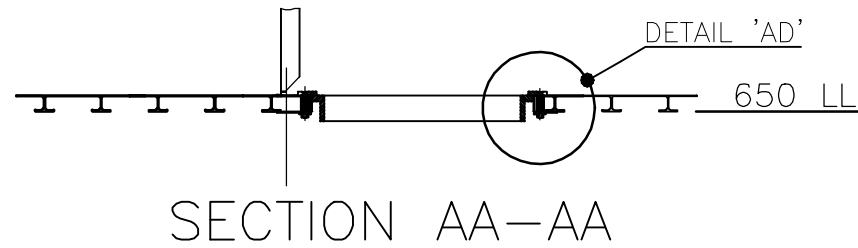


DETAIL 'AB'

HERCULES 2020
QUICK RELEASE HATCH (NON-HINGED).



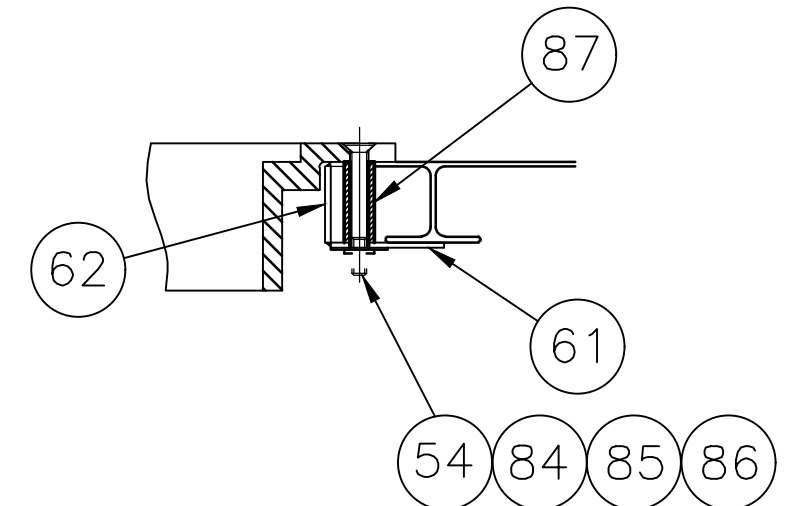
PLAN VIEW ON AFT DECK



SECTION AA-AA

HERCULES 2020
QUICK RELEASE HATCH (NON-HINGED).
DETAILS AS DRG. WAP1-88-H-4041. SHT.5
EXCEPT PRE-DRILLED HOLE PATTERN
IS NOW SUPPLIED AS SHOWN

CIRCULAR HATCH ITEM 5 SHOWN
ON WAP1-88-H-4041 SHT.2
SUPERSEDED BY ITEM 82
'LIFT-OUT' HERCULES HATCH. REF.



DETAIL 'AD'

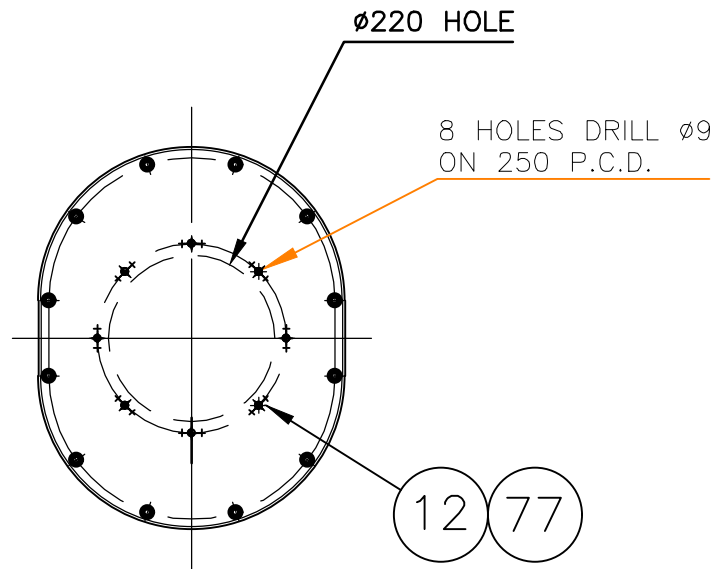
CANADIAN COAST GUARD
WAP1-88/400 CRAFT- #403

©	8	ISSUE	DRAWING TITLE :
THIS DRAWING IS THE PROPERTY OF HOVERWORK LIMITED AND MAY NOT BE COPIED OR USED FOR ANY PURPOSE OTHER THAN THAT FOR WHICH IT WAS SUPPLIED WITHOUT THE EXPRESS WRITTEN AUTHORITY OF HOVERWORK LIMITED	04/12/07	DATE	DIFFERENCES TO MANHOLES
	R.Le Goff	DRAWN	UNIT NO 31
	A.K.Drudge	CHKD	
	Lee Mumberson	STRESS	
	R. Barton	DESIGN	DRAWING No :
	NOTES	NOTES	

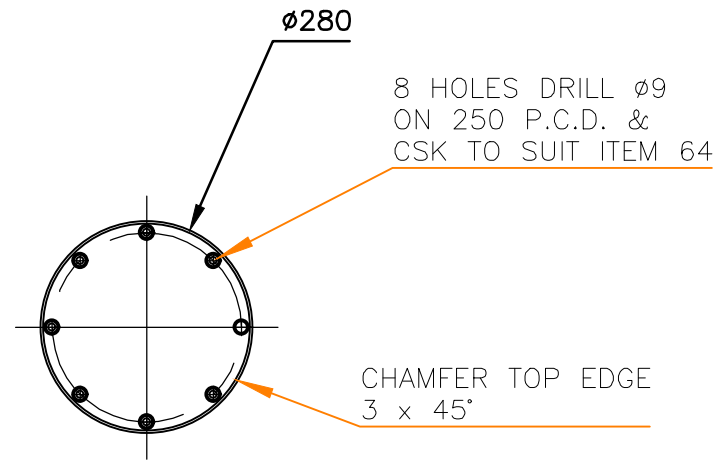
HTDWAP1-88-H-4041

SHT OF ISSUE :
4 OF 8

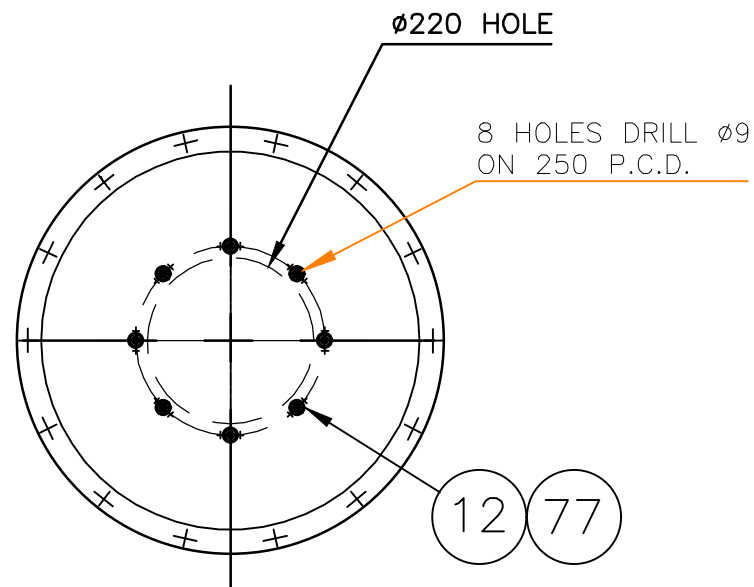
REV	AMENDMENT
9	PROJECT #401
RLG	THIS SHEET INTRODUCED AT THIS ISSUE



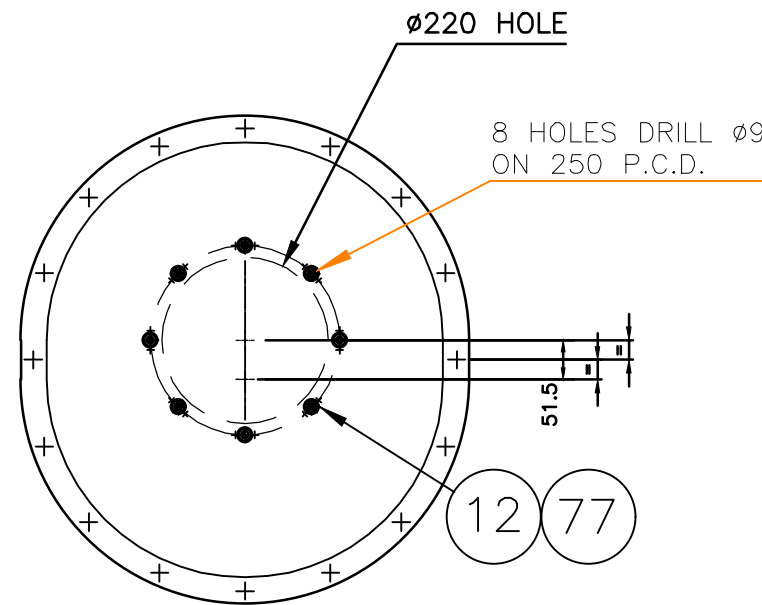
AMENDMENTS TO HATCH ITEM 8



DETAIL OF ITEM 88



AMENDMENTS TO HATCH ITEM 2



AMENDMENTS TO ACCESS HATCH MANUFACTURED
IN ACCORDANCE WITH ENGINEERING CONCESSION 107
APPLICABLE MID-BAY AT FR.5 TO 5.1
TOTAL 2 POSNS. PER CRAFT

CANADIAN COAST GUARD
WAP1-88/400 CRAFT- #403

© THIS DRAWING IS THE PROPERTY OF HOVERWORK LIMITED AND MAY NOT BE COPIED OR USED FOR ANY PURPOSE OTHER THAN THAT FOR WHICH IT WAS SUPPLIED WITHOUT THE EXPRESS WRITTEN AUTHORITY OF HOVERWORK LIMITED	9	ISSUE	DRAWING TITLE :	
	02/10/08	DATE		DIFFERENCES TO MANHOLES UNIT NO 31
	R.Le Goff	DRAWN		
	P.A. Blanchard	CHKD		
	Lee Mumberson	STRESS		
R. Barton	DESIGN			
NOTES	NOTES	DRAWING No :	HTDWAP1-88-H-4041	
		SHT OF ISSUE :	5 OF 9	