

GENERAL NOTES:

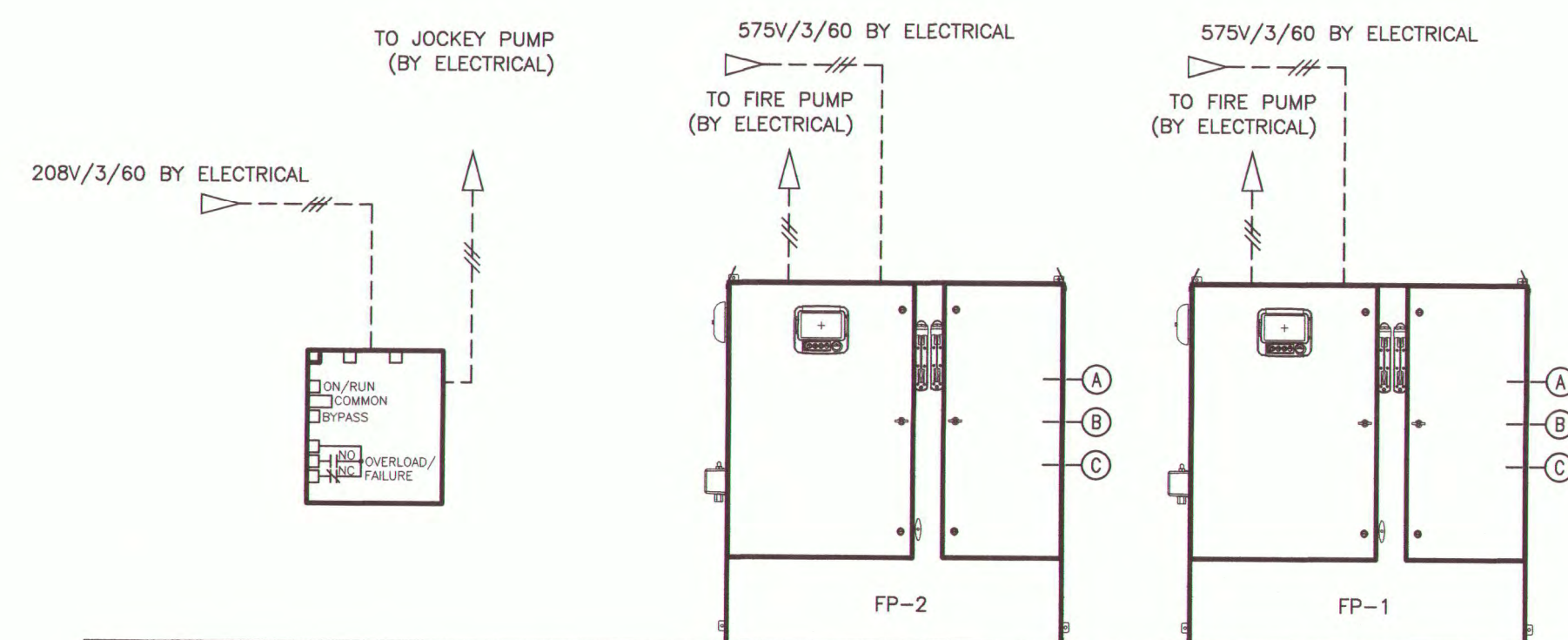
- REPLACE EXISTING ELECTRIC FIRE PUMPS, AND ALL ASSOCIATED EQUIPMENT INCLUDING JOCKEY PUMP AND PUMP CONTROLLERS AS SET FORTH ON NFPA 20, NFPA 25 AND NFPA 13.
- PUMP START-UP TO BE DONE BY THE SPRINKLER CONTRACTOR AND FIRE PUMP MANUFACTURER IN ADVANCE BEFORE FIRE PUMP COMMISSIONING IS SCHEDULED.
- FIRE PUMP SHALL BE TESTED AND CERTIFIED AS PER NFPA 20 AND MANUFACTURER'S REQUIREMENTS.

2
FP-4

GENERAL NOTES

SCALE : N.T.S.

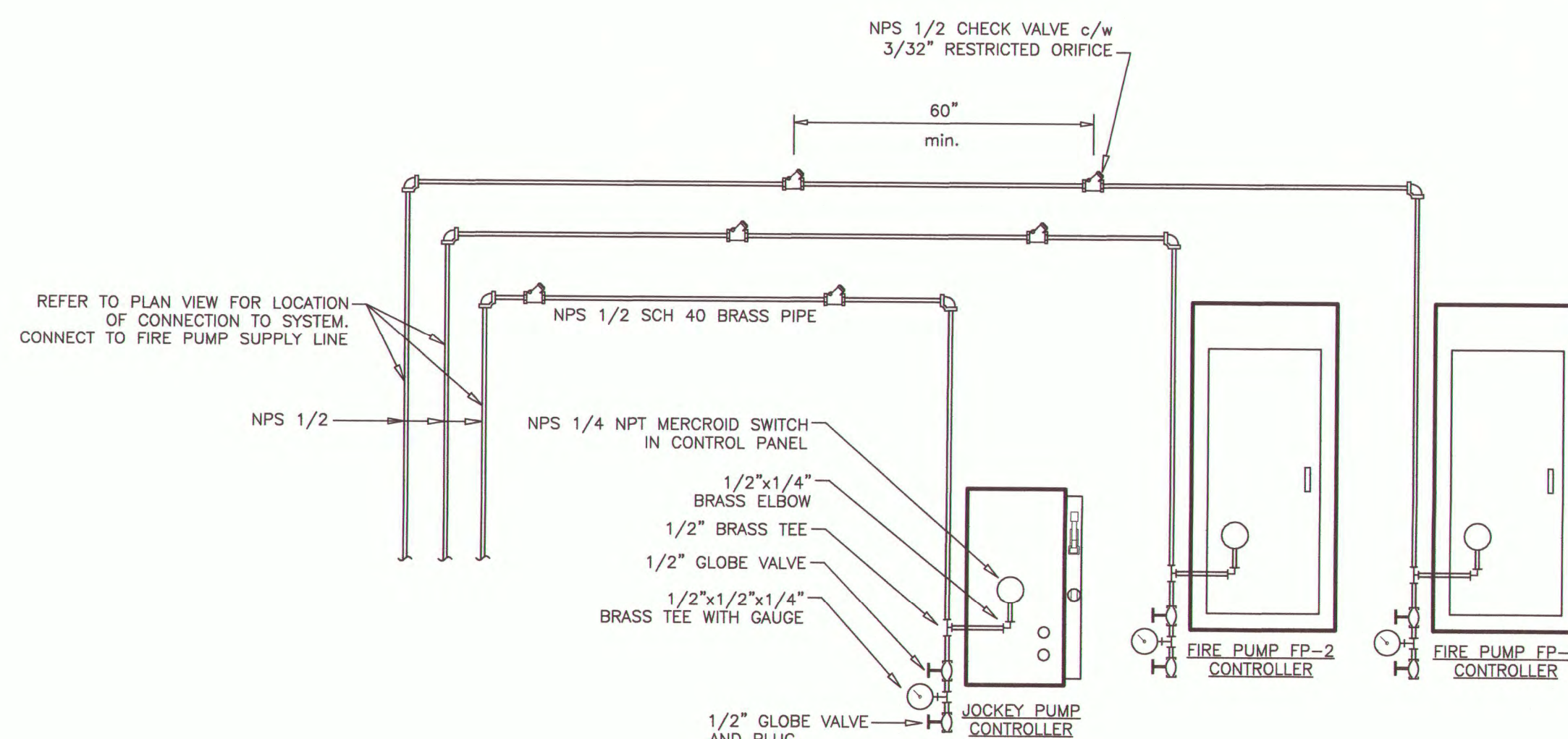
- ① ---> SUPERVISED FIRE PUMP PHASE REVERSAL
- ② ---> SUPERVISED FIRE PUMP LOSS OF POWER
- ③ ---> SUPERVISED FIRE PUMP RUNNING



3
FP-4

FIRE PUMP & JOCKEY PUMP CONTROLLERS

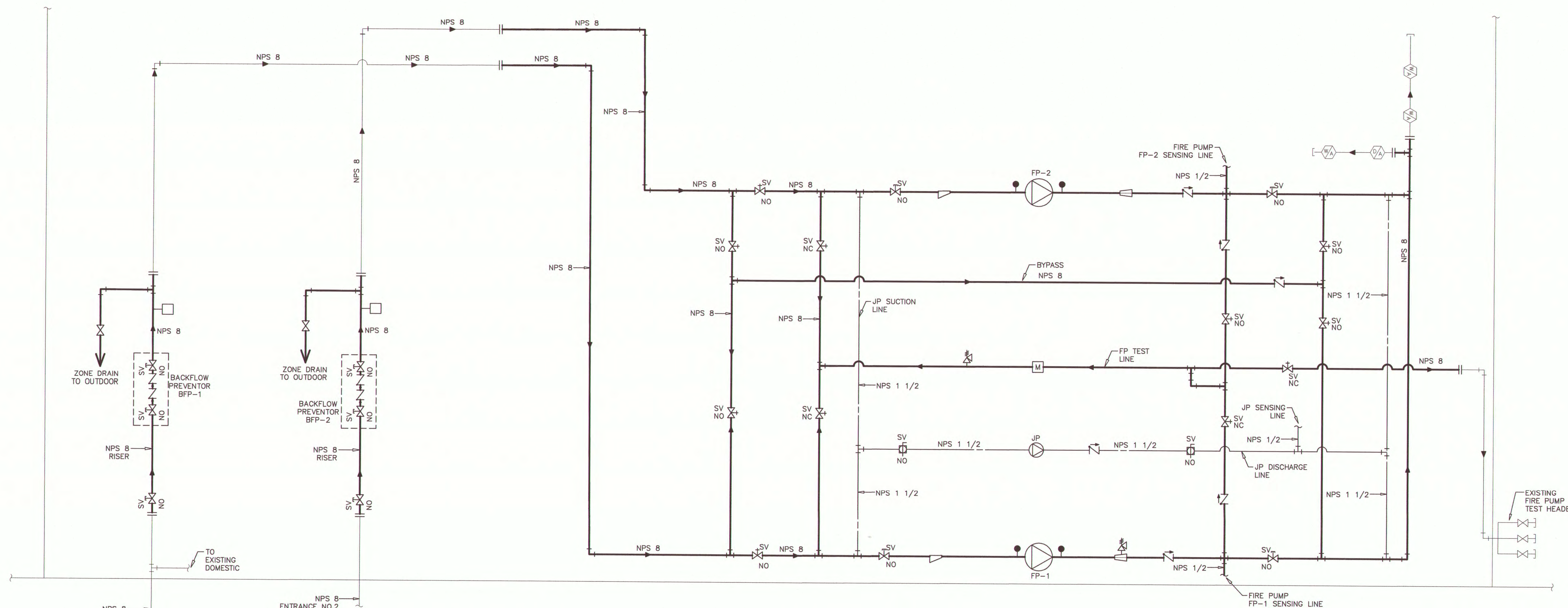
SCALE : N.T.S.



4
FP-4

SENSING LINE DETAIL

SCALE : N.T.S.



1
FP-4

ENTRANCES SCHEMATIC

SCALE : N.T.S.

SYMBOL LEGEND	
SV	SUPERVISED BUTTERFLY VALVE (NORMALLY OPENED)
SV NO	SUPERVISED BUTTERFLY VALVE (NORMALLY CLOSED)
SV NC	BACKFLOW PREVENTOR
SV NC	OS & Y VALVE
SV NC	FIRE PUMP TEST HEADER (ANGLE VALVE)
SV NC	PRESSURE RELIEF VALVE
SV NC	CONNECTION TO EXISTING
SV NC	FLOW DIRECTION
SV NC	ECCENTRIC REDUCER
SV NC	CONCENTRIC REDUCER
SV NC	750GPM @ 80PSI FIRE PUMP
SV NC	7.5GPM @ 100PSI JOCKEY PUMP
SV NC	CHECK VALVE
SV NC	WET ALARM VALVE
SV NC	DRY ALARM VALVE
SV NC	FIRE PUMP FLOW METER
SV NC	FLOW SWITCH
SV NC	CIRCULATION RELIEF VALVE AND AIR RELEASE VALVE
SV NC	LIQUID FILLED GAUGES
SV NC	SUPERVISED BALL VALVE

THE ASSOCIATION OF
PROFESSIONAL ENGINEERS
OF THE PROVINCE OF
PRINCE EDWARD ISLAND
VALID FOR THE YEAR 2019
Michael C. Gillis
Michael C. Gillis
No. 833
DATE: APR. 15/2019
LICENSED
PROFESSIONAL ENGINEER
PROVINCE OF
PRINCE EDWARD ISLAND

0	ISSUED FOR TENDER	04/15/2019
revisions		date

project
**JOSEPH A. GHIZ BUILDING
FIRE PUMP REPLACEMENT
275 POPE ROAD
SUMMERSIDE
PRINCE EDWARD ISLAND**

drawing
designed
conçu

**ENTRANCES SCHEMATIC
& DETAILS**

designed
H.C.

date
drawn
J.K.

date
approved
R.M.

date
Tender
PWCSC Project Manager

no. du projet
R.103420.001

drawing no.
no. du dessin

FP-4