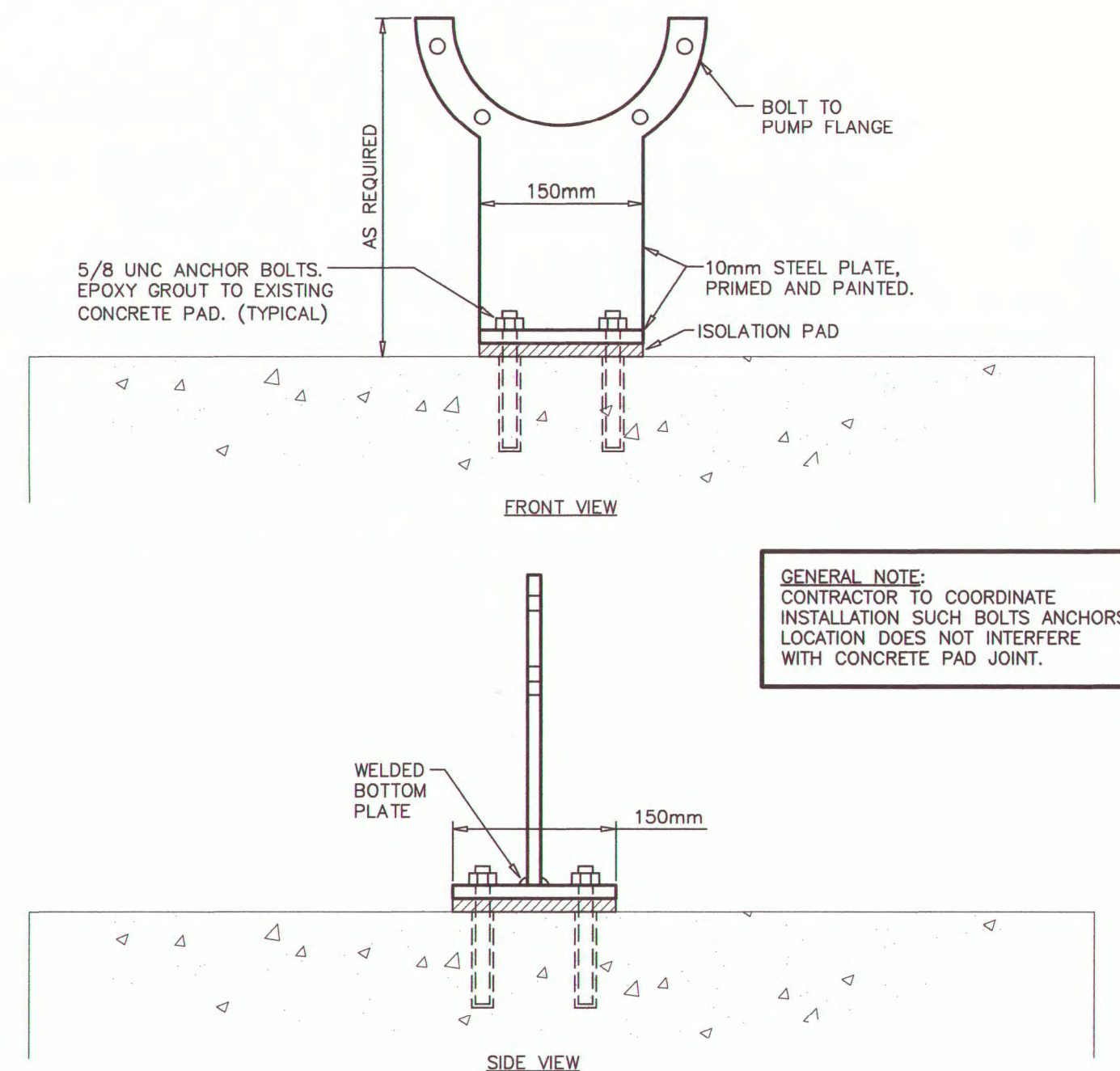
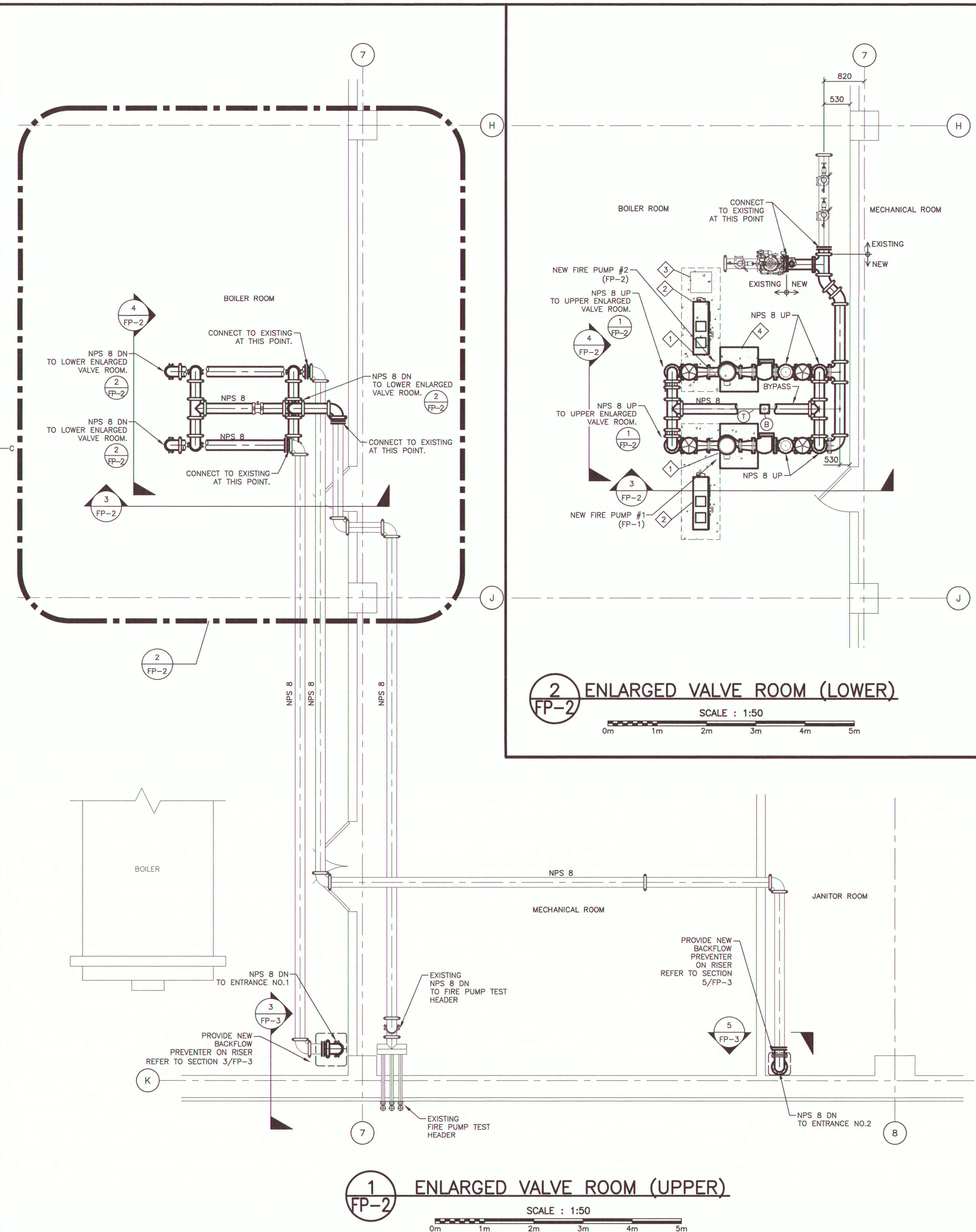
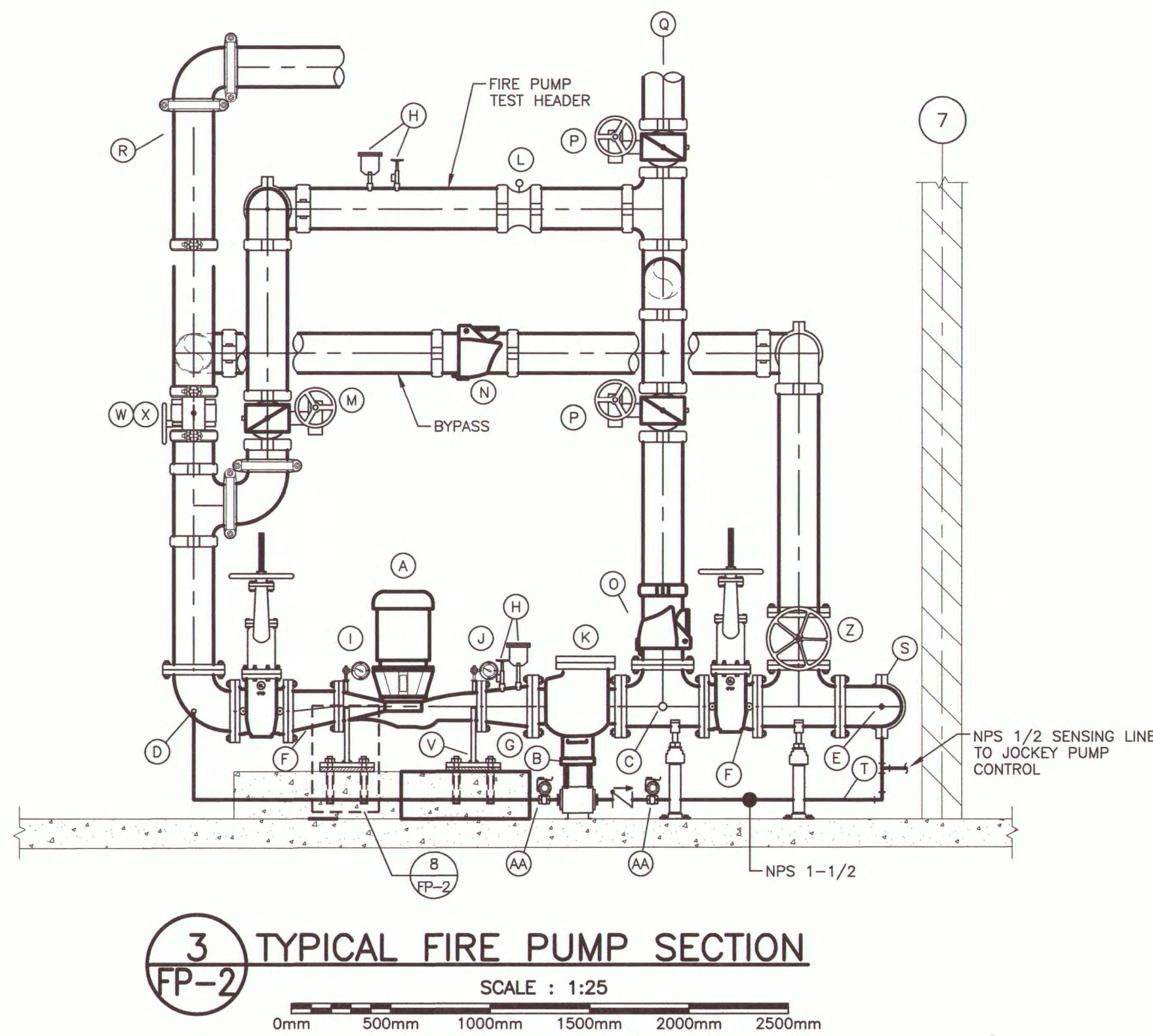


- DRAWING REFERENCE NOTES -- NEW WORK
- 1 - SUPPLY & INSTALL NEW VERTICAL IN-LINE FIRE PUMP ON NEW CONCRETE PAD BY GENERAL CONTRACTOR.
 - 2 - SUPPLY & INSTALL NEW TORNATECH ELECTRIC FIRE PUMP CONTROLLER WITH AUTOMATIC POWER TRANSFER SWITCH ON EXISTING CONCRETE PAD.
 - 3 - EXISTING AIR COMPRESSOR TO REMAIN.
 - 4 - CONTRACTOR TO ENLARGE CONCRETE PADS AS REQUIRED TO ACCOMMODATE NEW FIRE PUMPS. MATCH EXISTING HEIGHT & CONSTRUCTION. PRIME GRAY EPOXY COAT FINISH TO MATCH EXISTING. DOWEL NEW PAD INTO FLOOR & INTO EXISTING PAD WITH EPOXY-SET ANCHORS.

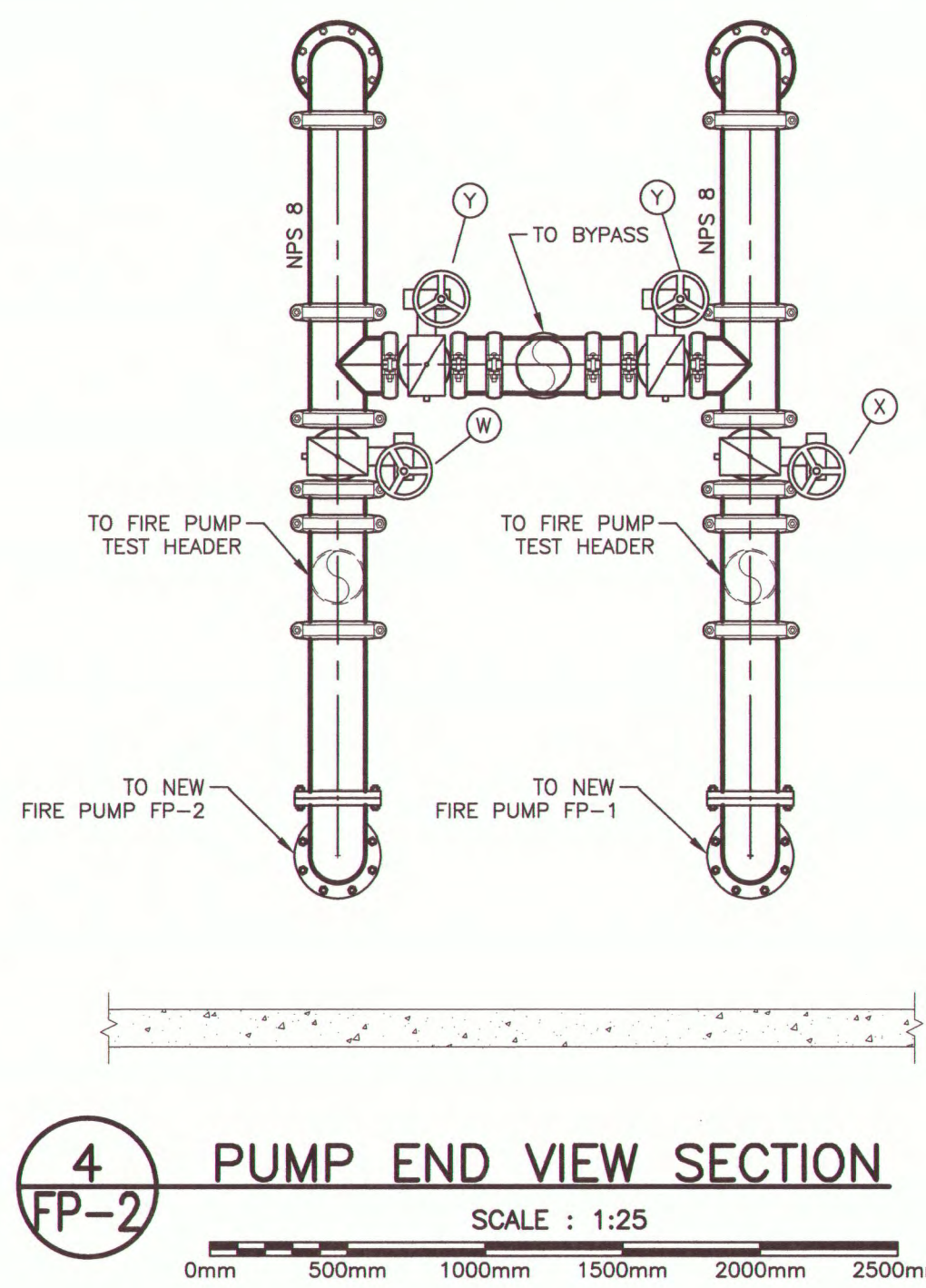
6 **DRAWING REFERENCE NOTES**
FP-2
SCALE : N.T.S.



8 **PUMP SUPPORT DETAIL**
FP-2
SCALE : N.T.S.



3 **TYPICAL FIRE PUMP SECTION**
FP-2
SCALE : 1:25



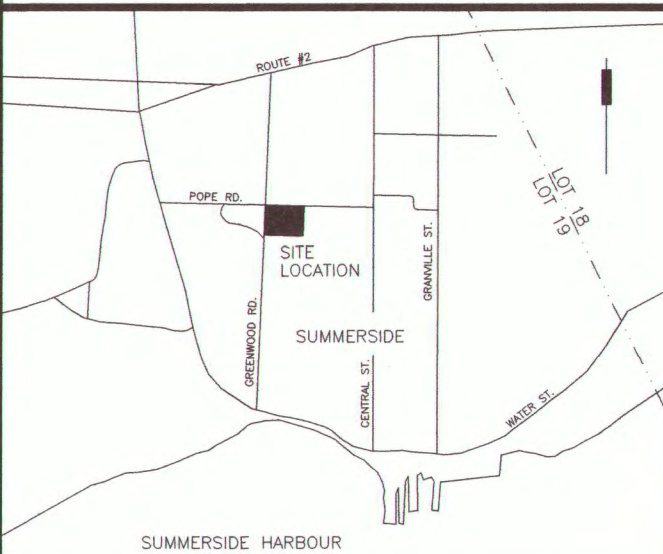
4 **PUMP END VIEW SECTION**
FP-2
SCALE : 1:25

- EQUIPMENT LEGEND -- NEW WORK
- A - NEW VERTICAL IN LINE FIRE PUMP RATED 750GPM @ 80PSI
 - B - NEW JOCKEY PUMP RATED 7.5GPM @ 100PSI
 - C - NEW NPS 8 FLANGED TEE C/W NPS 1/2 TAP ON TEE FOR FIRE PUMP SENSING LINE.
 - D - NEW NPS 8 OS&Y SUPERVISED SUCTION SIDE CONTROL VALVE.
 - E - TO NEW NPS 1-1/2 TAP FOR JOCKEY PUMP LINE ON FIRE PUMP DISCHARGE HEADER.
 - F - NEW NPS 8 OS&Y SUPERVISED DISCHARGE SIDE CONTROL VALVE
 - G - NEW FLANGED NPS 8 X NPS 6 ECCENTRIC REDUCER (ON SUCTION) & CONCENTRIC REDUCER (ON DISCHARGE)
 - H - NEW NPS 1-1/2 CIRCULATION RELIEF VALVE & AIR RELEASE VALVE.
 - I - NEW LIQUID-FILLED GAUGE SUCTION SIDE
 - J - NEW LIQUID-FILLED GAUGE DISCHARGE SIDE
 - K - NEW FLANGED DISCHARGE CHECK VALVE
 - L - NEW NPS 8 WATER FLOW METER
 - M - NEW NPS 8 BUTTERFLY SUPERVISED CONTROL VALVE
 - N - NEW NPS 8 BYPASS CHECK VALVE
 - O - NEW NPS 8 FIRE PUMP TEST HEADER CHECK VALVE
 - P - NEW NPS 8 NORMALLY CLOSED SUPERVISED BUTTERFLY VALVE
 - Q - NEW NPS 8 TO FIRE PUMP TEST HEADER
 - R - NEW NPS 8 TO ENTRANCES
 - S - NEW NPS 8 TO EXISTING SPRINKLER HEADER
 - T - NEW NPS 1-1/2 JOCKEY PUMP DISCHARGE PIPE
 - U - NEW PIPE STAND
 - V - NEW PUMP SUPPORT
 - W - NEW MAIN NORMALLY OPEN SUPERVISED ISOLATION VALVE FOR FIRE PUMP #1
 - X - NEW MAIN NORMALLY OPEN SUPERVISED ISOLATION VALVE FOR FIRE PUMP #2
 - Y - NEW NPS 8 SUPERVISED BUTTERFLY VALVE FOR BYPASS
 - Z - NEW NPS 8 OS&Y C/W TAMPER
 - AA - NEW SUPERVISORY BALL VALVE

7 **EQUIPMENT LEGEND**
FP-2
SCALE : N.T.S.

- SYMBOL LEGEND--NEW WORK
- EXISTING PIPING TO REMAIN
 - NEW PIPING
 - EXISTING GROOVED CAP TO REMAIN
 - EXISTING FLANGED DROP TO REMAIN
 - NEW FLANGED DROP
 - EXISTING GROOVED DROP TO REMAIN
 - NEW GROOVED DROP
 - EXISTING GROOVED 90 DEGREE ELBOW TO REMAIN
 - NEW FLANGED 90 DEGREE ELBOW
 - NEW GROOVED TEE
 - NEW FLANGED TEE
 - NEW FLANGED CONCENTRIC REDUCER
 - NEW FLANGED ECCENTRIC REDUCER
 - NEW FLANGED GATE SUPERVISED VALVE
 - NEW BUTTERFLY SUPERVISED VALVE
 - NEW WAFER CHECK VALVE
 - NEW METER FIRE PUMP TEST
 - NEW CHECK VALVE

5 **SYMBOL LEGEND**
FP-2
SCALE : N.T.S.



0	ISSUED FOR TENDER	04/15/2019
revisions		date
project	JOSEPH A. GHIZ BUILDING FIRE PUMP REPLACEMENT 275 POPE ROAD SUMMERSIDE PRINCE EDWARD ISLAND	
drawing	desain	
designed	H.C.	conçu
date		
drawn	J.K.	dessiné
date		
approved	R.M.	approuvé
date		
Tender	Submission 2019-04-23	
Project Manager	Administrateur de projets	TPSGC
project number	R.103420.001	
no. du projet		
drawing no.	FP-2	
no. du dessin		