



Parks Canada

Southwestern
Ontario
Field Unit

Parcs Canada

Unité de gestion
du Sud-Ouest
de l'Ontario

Niagara-on-the-Lake, Ontario

Parks Canada Agency, Southwestern Ontario Field Unit

LANDSCAPE PLANS FORT MISSISSAUGA

PCA Project No.: 1862

DATE: 2019-09-06



LIST OF DRAWINGS

- L-001 COVER PAGE
- L-010 KEY PLAN
- L-100 TREE MANAGEMENT/REMOVAL PLAN
- L-105 LANDSCAPE PLANS
- L-110 LANDSCAPE PLANS
- L-115 LANDSCAPE PLANS
- L-200 NOTES
- L-500 DETAILS
- L-505 DETAILS & CROSS SECTIONS
- L-510 DETAILS & CROSS SECTIONS
- L-515 DETAILS



Parcs Canada
Southwestern Ontario Field Unit



Notes:

- CONTRACTOR TO VERIFY ALL DIMENSIONS & CONDITIONS ON SITE AND IMMEDIATELY NOTIFY DEPARTMENTAL REPRESENTATIVE OF ALL DISCREPANCIES.
- DRAWING IS BASED ON SURVEYS BY MONTEITH & SUTHERLAND LTD. COMPLETED IN THE FIELD ON NOVEMBER 24, 2017 & JANUARY 29, 2018. SURVEY IN NAD83 UTM17 CSRS COORDINATE SYSTEM. ELEVATIONS ARE IN METRES RELATIVE TO LAKE ONTARIO CHART DATUM 0.0, EQUAL TO 74.13 m CGVD28.

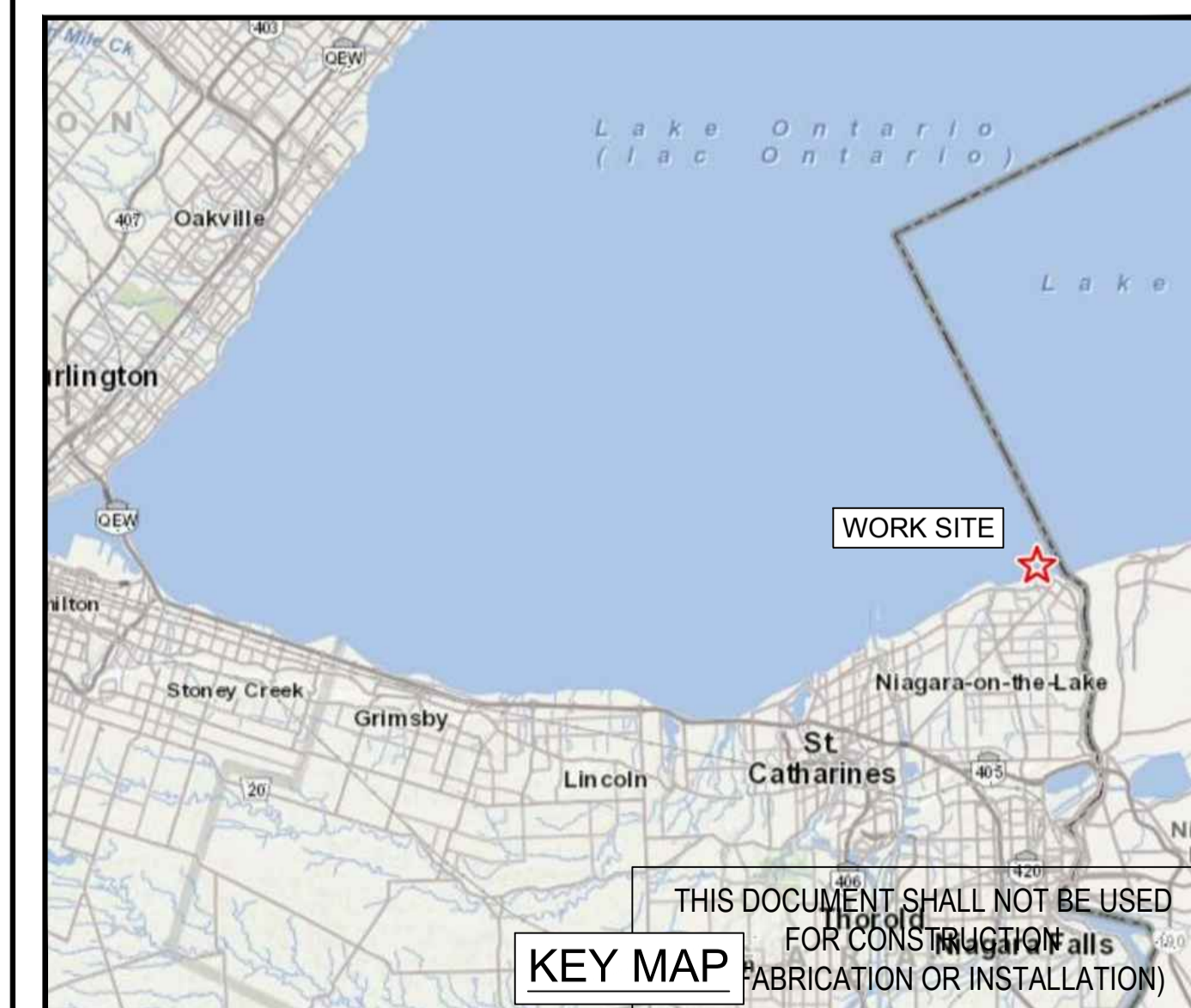
revisions	description	date
E	ISSUE FOR TENDER	2019-10-07
D	100% SUBMISSION	2019-09-25
C	99% SUBMISSION	2019-09-06
B	50% SUBMISSION	2019-08-08
A	OPTION ANALYSIS	2019-07-19

A	B	C
A detail no. no. du détail	B location drawing no. sur dessin no.	C drawing no. dessin no.

project projet
NIAGARA SHORE PROTECTION LANDSCAPING
 FORT MISSISSAUGA

drawing dessin
COVER PAGE

Designed By	B. Vander Veen	Conçu par	B. Vander Veen
Date	2019/07/04	(yyyy/mm/dd)	
Drawn By	B. Vander Veen	Dessiné par	B. Vander Veen
Date	2019/07/04	(yyyy/mm/dd)	
Reviewed By	A Gebhardt	Examiné par	A Gebhardt
Date	2019/07/04	(yyyy/mm/dd)	
Approved By	A Gebhardt	Approuvé par	A Gebhardt
Date	2019/07/04	(yyyy/mm/dd)	
Tender		Soumission	
Project Manager		Administrateur de projets	
Project no.	1862	No. du projet	
Drawing no.	L-001	No. du dessin	

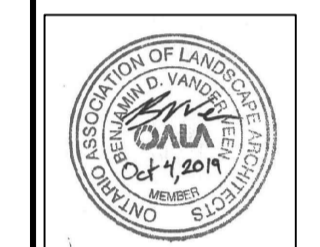


2019-10-07 1:13pm By: VanderveenBen
 \p\spec\19151-001B5-16_Parks Canada - Fort Mississauga\Drawings\151-001B5-16_PMA_Landscape_100%_L7.dwg



300-2611 QUEENSWAY DRIVE
 OTTAWA ONTARIO CANADA K2B 8K2
 TEL.: 613-829-2800 | FAX: 613-829-8299 | WWW.WSPGROUP.COM

- Notes:
- CONTRACTOR TO VERIFY ALL DIMENSIONS & CONDITIONS ON SITE AND IMMEDIATELY NOTIFY DEPARTMENTAL REPRESENTATIVE OF ALL DISCREPANCIES.
 - DRAWING IS BASED ON SURVEYS BY MONTEITH & SUTHERLAND LTD. COMPLETED IN THE FIELD ON NOVEMBER 24, 2017 & JANUARY 29, 2018. SURVEY IN NAD83 UTM17 CSRS COORDINATE SYSTEM. ELEVATIONS ARE IN METRES RELATIVE TO LAKE ONTARIO CHART DATUM 0.0, EQUAL TO 74.13 m CGVD28.



E	ISSUE FOR TENDER	2019-10-07
D	100% SUBMISSION	2019-09-25
C	99% SUBMISSION	2019-09-06
B	50% SUBMISSION	2019-08-08
A	OPTION ANALYSIS	2019-07-19

revisions	description	date
A	A detail no. no. du detail	
B	B location drawing no. sur dessin no.	
C	C drawing no. dessin no.	

project / projet
NIAGARA SHORE PROTECTION LANDSCAPING
 FORT MISSISSAUGA

drawing / dessin
LANDSCAPE KEY PLAN

Designed By	B. Vander Veen	Conçu par
Date	2019/07/04	(yyyy/mm/dd)
Drawn By	B. Vander Veen	Dessiné par
Date	2019/07/04	(yyyy/mm/dd)
Reviewed By	A Gebhardt	Examiné par
Date	2019/07/04	(yyyy/mm/dd)
Approved By	A Gebhardt	Approuvé par
Date	2019/07/04	(yyyy/mm/dd)
Tender		Soumission
Project Manager		Administrateur de projets
Project no.		No. du projet

1862
 Drawing no. / No. du dessin
L-010

THIS DOCUMENT SHALL NOT BE USED FOR CONSTRUCTION (OR FABRICATION OR INSTALLATION)

MATCHLINE - SEE DRAWING L-110



Canada

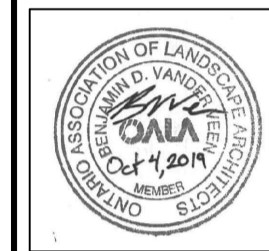
Parks Canada Parcours Canada
 Southwestern Ontario Unité de gestion du Sud-Ouest de l'Ontario
 Field Unit

wsp

300-2611 QUEENVIEW DRIVE
 OTTAWA ONTARIO CANADA K2B 8K2
 TEL.: 613-829-2800 | FAX: 613-829-8299 | WWW.WSPGROUP.COM

Notes:

- CONTRACTOR TO VERIFY ALL DIMENSIONS & CONDITIONS ON SITE AND IMMEDIATELY NOTIFY DEPARTMENTAL REPRESENTATIVE OF ALL DISCREPANCIES.
- DRAWING IS BASED ON SURVEYS BY MONTEITH & SUTHERLAND LTD. COMPLETED IN THE FIELD ON NOVEMBER 24, 2017 & JANUARY 29, 2018. SURVEY IN NAD83 UTM17 CSRS COORDINATE SYSTEM. ELEVATIONS ARE IN METRES RELATIVE TO LAKE ONTARIO CHART DATUM 0.0, EQUAL TO 74.13 m CGVD28.



revisions	description	date
E	ISSUE FOR TENDER	2019-10-07
D	100% SUBMISSION	2019-09-25
C	99% SUBMISSION	2019-09-06
B	50% SUBMISSION	2019-08-08
A	OPTION ANALYSIS	2019-07-19

A	A detail no. du detail	A
B	B location drawing no. sur dessin no.	B
C	C drawing no. dessin no.	C

project project
NIAGARA SHORE PROTECTION LANDSCAPING
 FORT MISSISSAUGA

drawing dessin
TREE MANAGEMENT

Designed By	B. Vander Veen	Conçu par	B. Vander Veen
Date	2019/07/04	(yyyy/mm/dd)	
Drawn By	B. Vander Veen	Dessiné par	B. Vander Veen
Date	2019/07/04	(yyyy/mm/dd)	
Reviewed By	A Gebhardt	Examiné par	A Gebhardt
Date	2019/07/04	(yyyy/mm/dd)	
Approved By	A Gebhardt	Approuvé par	A Gebhardt
Date	2019/07/04	(yyyy/mm/dd)	
Tender		Soumission	
Project Manager		Administrateur de projets	
Project no.		No. du projet	

1862
 Drawing no. No. du dessin
L-100

LEGEND:

- REMOVAL AREA 1 - REMOVE ALL WOODY VEGETATION AT BASE. PAINT GLYSPHATE HERBICIDE ON CUTS PER NOTES. REMOVE ALL SHRUBS AND PERENNIALS.
- REMOVAL AREA 2 - REMOVE ALL WOODY VEGETATION IN WET SWALE. PAINT GLYSPHATE HERBICIDE ON CUTS PER NOTES. PERENNIAL VEGETATION TO REMAIN.
- REMOVE AND SALVAGE GRANULAR CONSTRUCTION ROAD. REUSE MATERIAL ON PROPOSED TRAIL. REINSTATE VEGETATION PER DRAWING L-115. LEAVE 2M WIDE LIMESTONE TRAIL TO GOLF GREEN.
- SUPPLY AND INSTALL SILT FENCE PER 8/L-500. DO NOT KEY INTO INSITU SOIL. CONTRACTOR TO REINFORCE WHERE NECESSARY.

- NOTES:**
- DUE TO ARCHAEOLOGICAL RESTRAINTS NO GRUBBING OF TREES IS TO OCCUR. TREES STUMPS ARE TO BE RAZED TO EXISTING GRADE. ALL VEGETATION TO BE REMOVED AND DISPOSED OF OFFSITE. ROCK FORMATIONS TO BE LEFT IN PLACE.
 - ALL WOODY VEGETATION WITHIN THE FORT MISSISSAUGA EATHWORKS AND BREAKWALL TO BE REMOVED AND PAINTED WITH HERBICIDE.
 - ALL WOODY VEGETATION ABOVE 12MM DIAMETER TO BE PAINTED WITH GLYSPHATE HERBICIDE.
 - TREE REMOVALS TO BE MARKED BY WSP LANDSCAPE ARCHITECT PRIOR TO REMOVAL.
 - ALL INVASIVE SPECIES TO BE REMOVED AND DISPOSED OF ONTARIO BEST MANAGEMENT PRACTICES. THIS INCLUDES, BUT IS NOT LIMITED TO BUCKTHORN, DOG STRANGLING VINE AND SIBERIAN ELM.
 - SPORADIC BUCKTHORN EXIST THROUGHOUT THE EARTHWORKS. ALL WOODY VEGETATION ON THE EARTHWORKS TO BE CUT AT GRADE AND TREATED WITH HERBICIDE.
 - ACCESS FOR TREE REMOVALS TO OCCUR TO FROM EAST CONSTRUCTION ACCESS ROAD. MACHINERY SIZE MUST FIT ON EXISTING ACCESS ROAD.
 - EARTHWORK CONTOURS ARE SCHEMATIC ONLY. ALL GRADES TO BE VERIFIED IN THE FIELD.

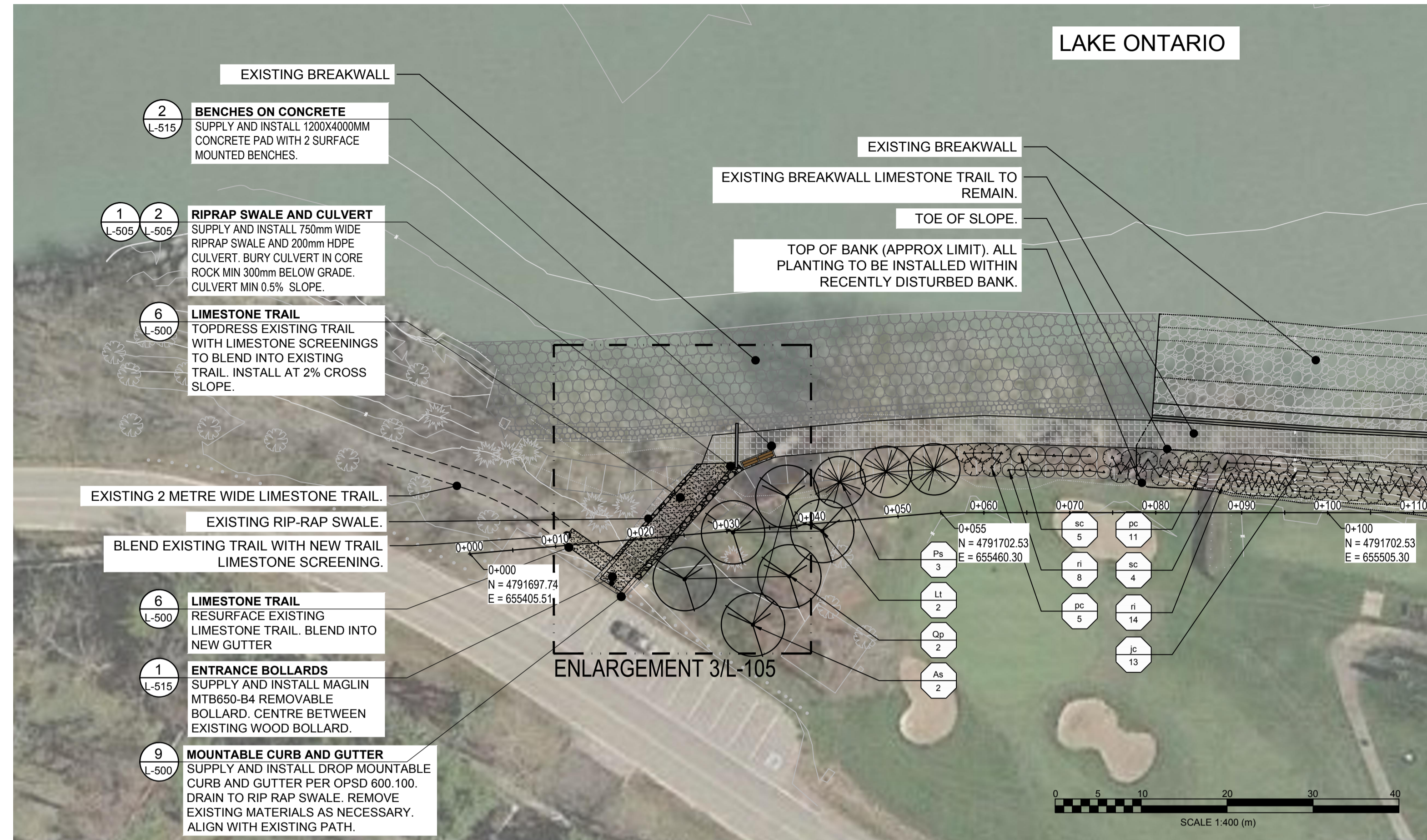
THIS DOCUMENT SHALL NOT BE USED FOR CONSTRUCTION (OR FABRICATION OR INSTALLATION)

2019-10-07 1:14pm By: VanderveenBen
 L:\pds\201910151-00185-16_Parks_Canada_Fort_Mississauga\pds\Drawings\151-00185-16-FMA_Landscape_100%_of_dwg

PLANT LIST - MASTER LIST

Key	Qty.	Botanical Name	Common Name	Condition	Spacing
Trees					
Deciduous					
As	5	Acer saccharinum	Silver Maple	40mm Cal. W.B.	See Plans
Bp	3	Betula papyrifera	Paper Birch	40mm Cal. W.B.	See Plans
Co	3	Carya ovata	Shagbark Hickory	40mm Cal. W.B.	See Plans
Lt	5	Liriodendron tulipifera	Tuliptree	40mm Cal. W.B.	See Plans
Ns	3	Nyssa sylvatica	Black Gum	40mm Cal. W.B.	See Plans
Ov	1	Ostrya virginiana	Ironwood	40mm Cal. W.B.	See Plans
Qp	5	Quercus palustris	Pin Oak	40mm Cal. W.B.	See Plans
Coniferous					
Ps	17	Pinus strobus	White Pine	150cm Tall. W.B.	See Plans
Shrubs					
ac	42	Amelanchier canadensis	Serviceberry	3 gal, 50cm	See Plans
am	56	Aronia melanocarpa	Chokeberry	3 gal, 50cm	See Plans
jc	28	Juniperus communis	Common Juniper	3 gal, 50cm	See Plans
jod	5	Juniperus communis 'Depressa'	Depressa Juniper	2 gal, 50cm	See Plans
pc	60	Prunus x cistena	Purple-leaf Sand Cherry	3 gal, 50cm	See Plans
po	21	Physocarpus opulifolius	Common Ninebark	3 gal, 50cm	See Plans
ri	62	Rubus ideaus var. strigosus	Wild Red Raspberry	3 gal, 50cm	See Plans
sc	47	Sambucus canadensis	Common Elderberry	3 gal, 50cm	See Plans

Note: Plant Quantities Indicated on the Planting Plan will Supercede the Quantities Listed Above.



1 LANDSCAPE PLAN
L-105

Scale: 1:400

Canada

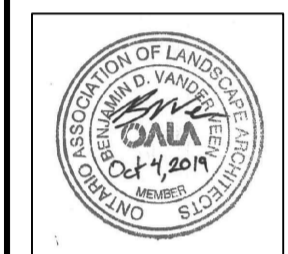
Parks Canada Parcs Canada
Southwestern Ontario Field Unit
Unité de gestion du Sud-Ouest de l'Ontario

WSP

300-2611 QUEENSWAY DRIVE
OTTAWA ONTARIO CANADA K2B 8K2
TEL: 613-829-2800 | FAX: 613-829-8299 | WWW.WSPGROUP.COM

Notes:

- CONTRACTOR TO VERIFY ALL DIMENSIONS & CONDITIONS ON SITE AND IMMEDIATELY NOTIFY DEPARTMENTAL REPRESENTATIVE OF ALL DISCREPANCIES.
- DRAWING IS BASED ON SURVEYS BY MONTEITH & SUTHERLAND LTD. COMPLETED IN THE FIELD ON NOVEMBER 24, 2017 & JANUARY 29, 2018. SURVEY IN NAD83 UTM17 CSRS COORDINATE SYSTEM. ELEVATIONS ARE IN METRES RELATIVE TO LAKE ONTARIO CHART DATUM 0.0, EQUAL TO 74.13 m CGVD28.



revision	description	date
E	ISSUE FOR TENDER	2019-10-07
D	100% SUBMISSION	2019-09-25
C	99% SUBMISSION	2019-09-06
B	50% SUBMISSION	2019-08-08
A	OPTION ANALYSIS	2019-07-19

revisions	description	date
A	A detail no. du detail	
B	B location drawing no. sur dessin no.	
C	C drawing no. dessin no.	

project project

NIAGARA SHORE PROTECTION LANDSCAPING

FORT MISSISSAUGA

drawing dessin

LANDSCAPE PLANS

Designed By B. Vander Veen Conçu par
Date 2019/07/04 (yyyy/mm/dd)

Drawn By B. Vander Veen Dessiné par
Date 2019/07/04 (yyyy/mm/dd)

Reviewed By A Gebhardt Examiné par
Date 2019/07/04 (yyyy/mm/dd)

Approved By A Gebhardt Approuvé par
Date 2019/07/04 (yyyy/mm/dd)

Tender Soumission

Project Manager Administrateur de projets

Project no. No. du projet

1862

Drawing no. No. du dessin

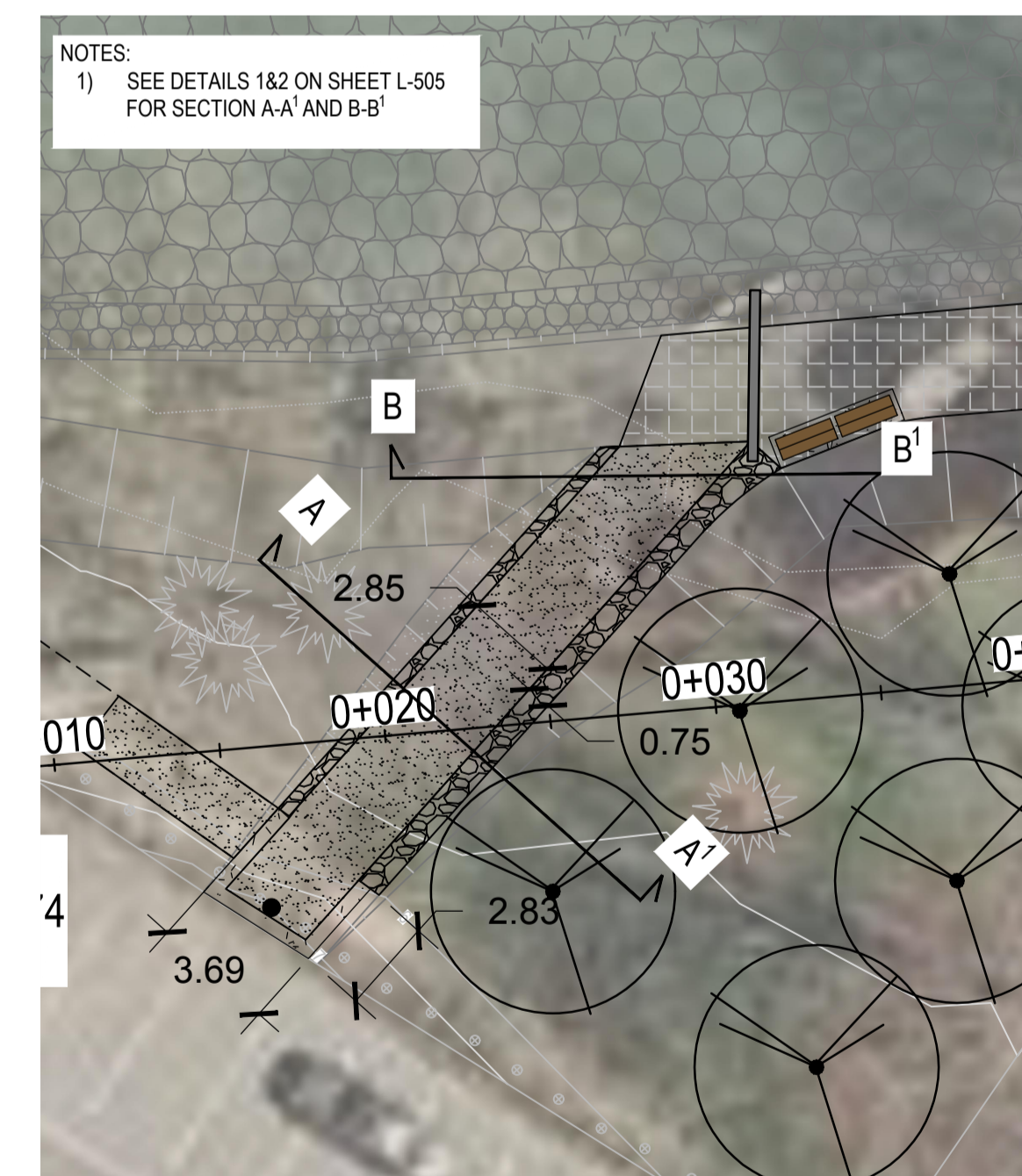
L-105

LAKE ONTARIO



2 LANDSCAPE PLAN
L-105

Scale: 1:400



3 ENLARGEMENT
L-105

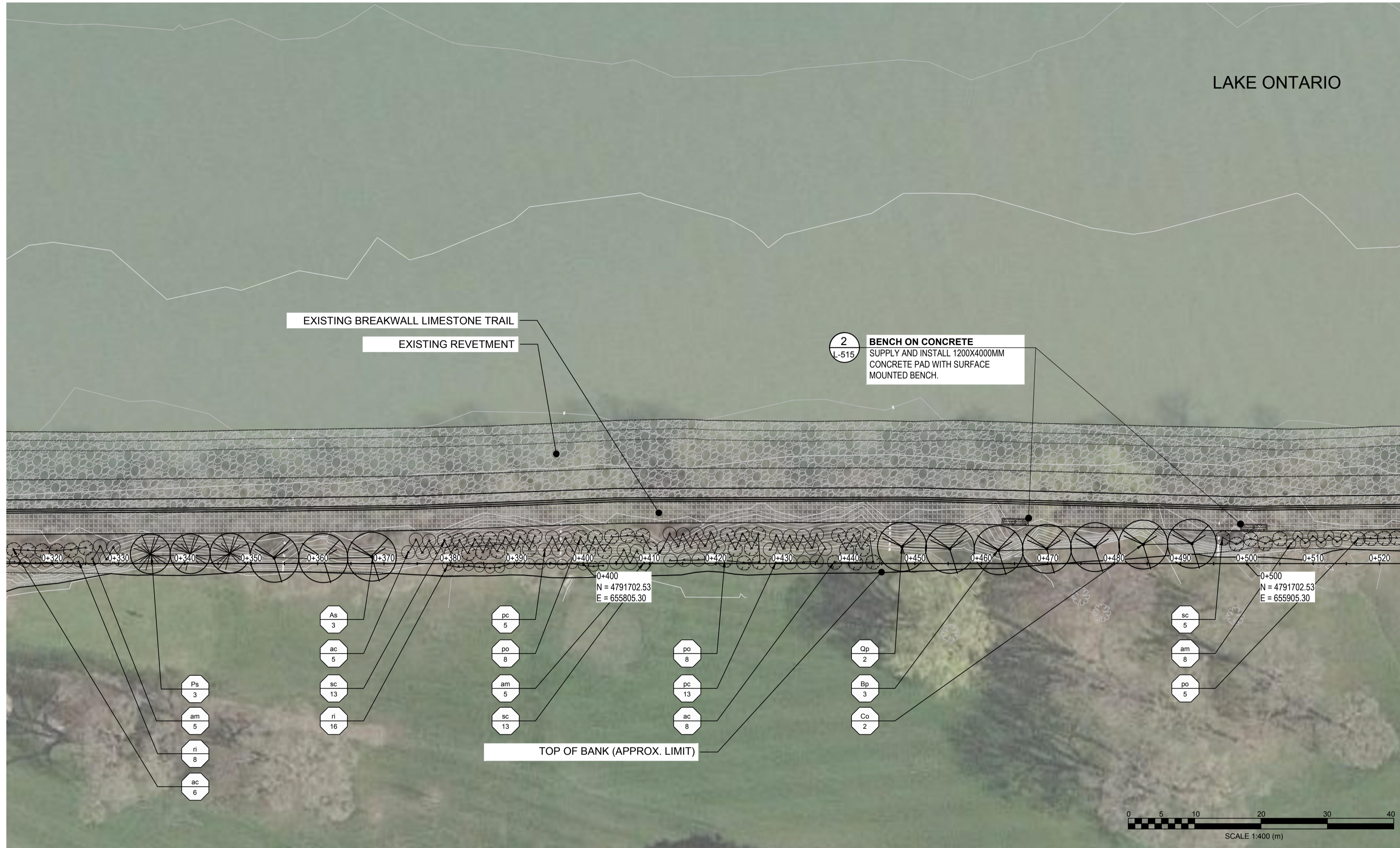
Scale: 1:200

- LEGEND:
- SUPPLY AND INSTALL DECIDUOUS AND CONIFEROUS TREE PER DETAIL 1.2, 83/L-500.
 - SUPPLY AND INSTALL SHRUB PER DETAIL 485/L-500

THIS DOCUMENT SHALL NOT BE USED FOR CONSTRUCTION (OR FABRICATION OR INSTALLATION)



MATCHLINE - SEE DRAWING 2/L-105



MATCHLINE - SEE DRAWING L-115

Canada

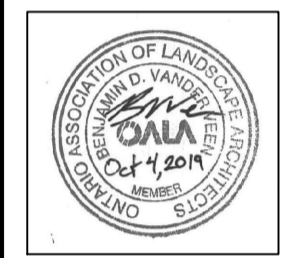
Parks Canada / Parcs Canada
 Southwestern Ontario Field Unit / Unité de gestion du Sud-Ouest de l'Ontario

wsp

300-2611 QUEENVIEW DRIVE
 OTTAWA ONTARIO CANADA K2B 8K2
 TEL.: 613-829-2800 | FAX: 613-829-8299 | WWW.WSPGROUP.COM

Notes:

- CONTRACTOR TO VERIFY ALL DIMENSIONS & CONDITIONS ON SITE AND IMMEDIATELY NOTIFY DEPARTMENTAL REPRESENTATIVE OF ALL DISCREPANCIES.
- DRAWING IS BASED ON SURVEYS BY MONTEITH & SUTHERLAND LTD. COMPLETED IN THE FIELD ON NOVEMBER 24, 2017 & JANUARY 29, 2018. SURVEY IN NAD83 UTM17 CSRS COORDINATE SYSTEM. ELEVATIONS ARE IN METRES RELATIVE TO LAKE ONTARIO CHART DATUM 0.0, EQUAL TO 74.13 m CGVD28.



revisions	description	date
E	ISSUE FOR TENDER	2019-10-07
D	100% SUBMISSION	2019-09-25
C	99% SUBMISSION	2019-09-06
B	50% SUBMISSION	2019-08-08
A	OPTION ANALYSIS	2019-07-19

A	B	C
A detail no. / no. du detail	B location drawing no. / sur dessin no.	C drawing no. / dessin no.

project / projet
NIAGARA SHORE PROTECTION LANDSCAPING
 FORT MISSISSAUGA

drawing / dessin
LANDSCAPE PLANS

Designed By / Conçu par	B. Vander Veen
Date / (yyyy/mm/dd)	2019/07/04
Drawn By / Dessiné par	B. Vander Veen
Date / (yyyy/mm/dd)	2019/07/04
Reviewed By / Examiné par	A Gebhardt
Date / (yyyy/mm/dd)	2019/07/04
Approved By / Approuvé par	A Gebhardt
Date / (yyyy/mm/dd)	2019/07/04
Tender / Soumission	

Project Manager / Administrateur de projets	
Project no. / No. du projet	1862
Drawing no. / No. du dessin	L-110

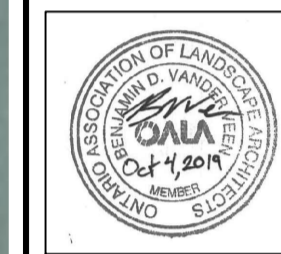
LEGEND:

- SUPPLY AND INSTALL DECIDUOUS AND CONIFEROUS TREE PER DETAIL 1.2.&3/L-500.
- SUPPLY AND INSTALL SHRUB PER DETAIL 4&5/L-500

THIS DOCUMENT SHALL NOT BE USED FOR CONSTRUCTION (OR FABRICATION OR INSTALLATION)

Notes:

- CONTRACTOR TO VERIFY ALL DIMENSIONS & CONDITIONS ON SITE AND IMMEDIATELY NOTIFY DEPARTMENTAL REPRESENTATIVE OF ALL DISCREPANCIES.
- DRAWING IS BASED ON SURVEYS BY MONTEITH & SUTHERLAND LTD. COMPLETED IN THE FIELD ON NOVEMBER 24, 2017 & JANUARY 29, 2018. SURVEY IN NAD83 UTM17 CSRS COORDINATE SYSTEM. ELEVATIONS ARE IN METRES RELATIVE TO LAKE ONTARIO CHART DATUM 0.0, EQUAL TO 74.13 m CGVD28.



revisions	description	date
E	ISSUE FOR TENDER	2019-10-07
D	100% SUBMISSION	2019-09-25
C	99% SUBMISSION	2019-09-06
B	50% SUBMISSION	2019-08-08
A	OPTION ANALYSIS	2019-07-19

A	B	C
A detail no. du detail	B location drawing no. sur dessin no.	C drawing no. dessin no.

project project

NIAGARA SHORE PROTECTION LANDSCAPING

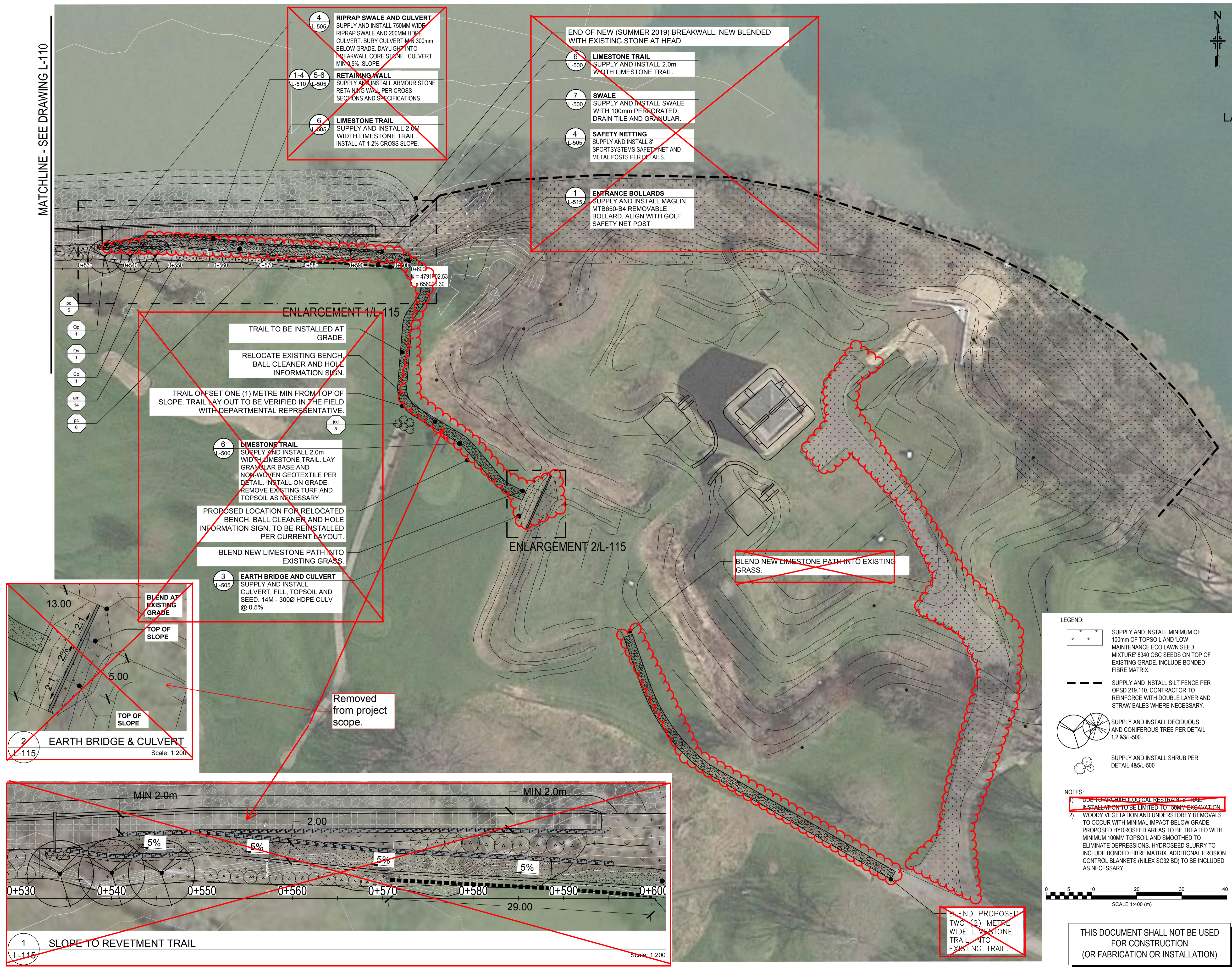
FORT MISSISSAUGA

LANDSCAPE PLANS

Designed By	B. Vander Veen	Conçu par	Conçu par
Date	2019/07/04	(yyyy/mm/dd)	(yyyy/mm/dd)
Drawn By	B. Vander Veen	Dessiné par	Dessiné par
Date	2019/07/04	(yyyy/mm/dd)	(yyyy/mm/dd)
Reviewed By	A Gebhardt	Examiné par	Examiné par
Date	2019/07/04	(yyyy/mm/dd)	(yyyy/mm/dd)
Approved By	A Gebhardt	Approuvé par	Approuvé par
Date	2019/07/04	(yyyy/mm/dd)	(yyyy/mm/dd)
Tender		Submission	Submission

Project Manager	Administrateur de projets
Project no.	No. du projet
1862	
Drawing no.	No. du dessin
L-115	

MATCHLINE - SEE DRAWING L-110



4 L-505
RIPRAP SWALE AND CULVERT
SUPPLY AND INSTALL 750MM WIDE RIPRAP SWALE AND 200MM HDPE CULVERT. BURY CULVERT MIN 300mm BELOW GRADE. DAYLIGHT INTO BREAKWALL CORE STONE. CULVERT MIN 0.5% SLOPE.

1-4 L-510
5-6 L-505
RETAINING WALL
SUPPLY AND INSTALL ARMOUR STONE RETAINING WALL PER CROSS SECTIONS AND SPECIFICATIONS.

6 L-505
LIMESTONE TRAIL
SUPPLY AND INSTALL 2.0M WIDTH LIMESTONE TRAIL. INSTALL AT 1-2% CROSS SLOPE.

6 L-500
LIMESTONE TRAIL
SUPPLY AND INSTALL 2.0m WIDTH LIMESTONE TRAIL.

7 L-500
SWALE
SUPPLY AND INSTALL SWALE WITH 100mm PERFORATED DRAIN TILE AND GRANULAR.

4 L-505
SAFETY NETTING
SUPPLY AND INSTALL 8' SPORTSYSTEMS SAFETY NET AND METAL POSTS PER DETAILS.

1 L-515
ENTRANCE BOLLARDS
SUPPLY AND INSTALL MAGLIN MTB650-B4 REMOVABLE BOLLARD. ALIGN WITH GOLF SAFETY NET POST

ENLARGEMENT 1/L-115

TRAIL TO BE INSTALLED AT GRADE.

RELOCATE EXISTING BENCH, BALL CLEANER AND HOLE INFORMATION SIGN.

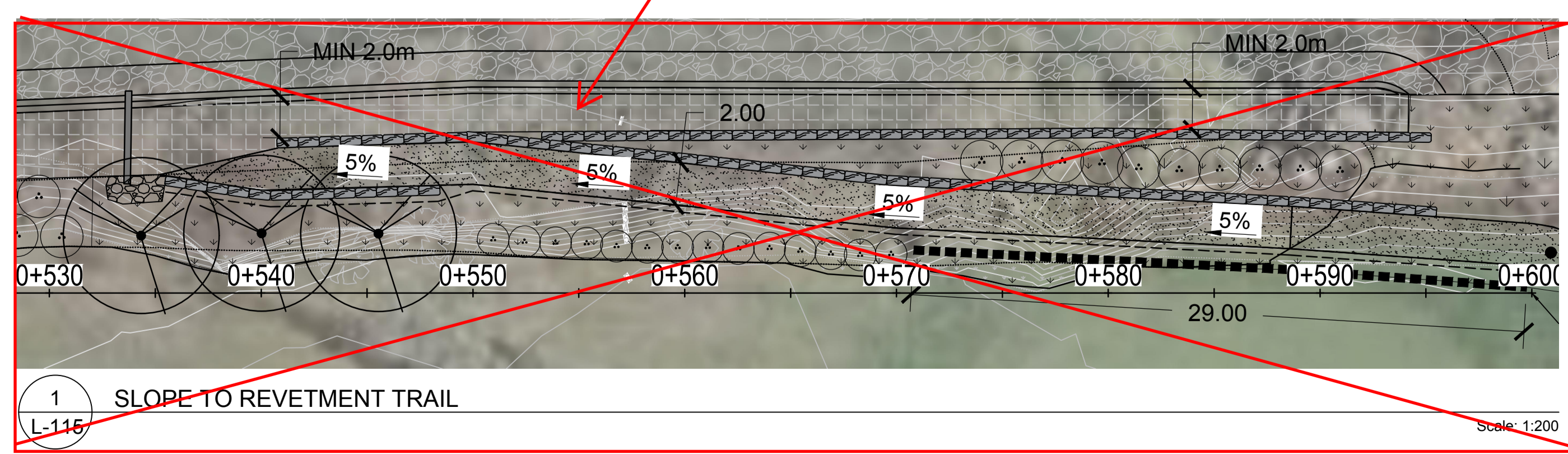
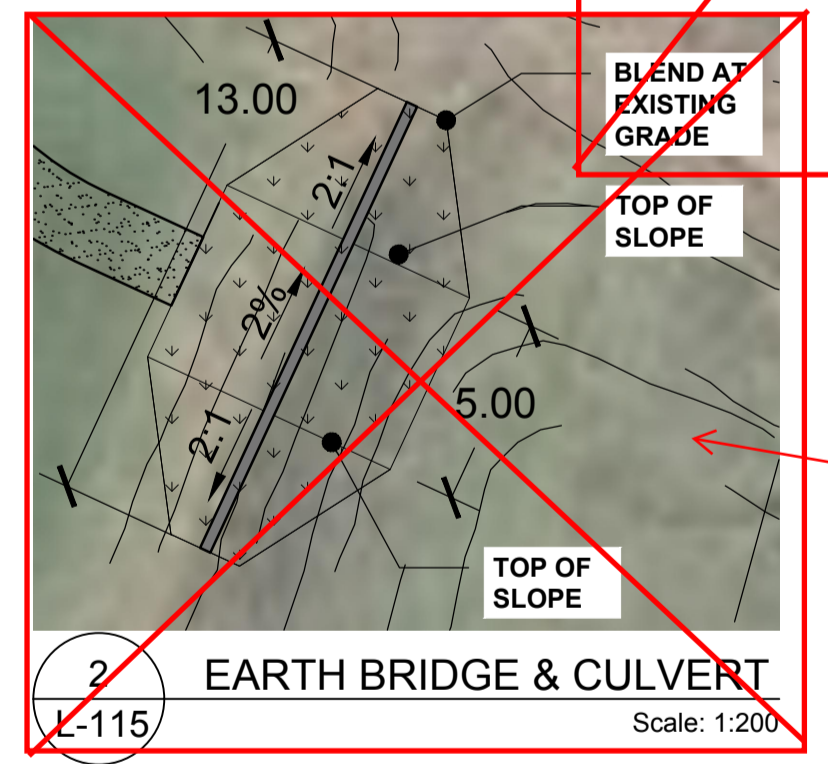
TRAIL OFFSET ONE (1) METRE MIN FROM TOP OF SLOPE. TRAIL LAY OUT TO BE VERIFIED IN THE FIELD WITH DEPARTMENTAL REPRESENTATIVE.

6 L-500
LIMESTONE TRAIL
SUPPLY AND INSTALL 2.0m WIDTH LIMESTONE TRAIL. LAY GRANULAR BASE AND NON WOVEN GEOTEXTILE PER DETAIL. INSTALL ON GRADE. REMOVE EXISTING TURF AND TOPSOIL AS NECESSARY.

PROPOSED LOCATION FOR RELOCATED BENCH, BALL CLEANER AND HOLE INFORMATION SIGN. TO BE REINSTALLED PER CURRENT LAYOUT.

BLEND NEW LIMESTONE PATH INTO EXISTING GRASS.

3 L-505
EARTH BRIDGE AND CULVERT
SUPPLY AND INSTALL CULVERT, FILL, TOPSOIL AND SEED. 14M - 3000 HDPE CULV @ 0.5%.



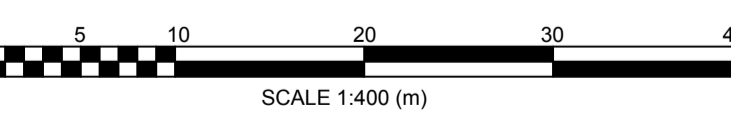
LEGEND:

- SUPPLY AND INSTALL MINIMUM OF 100mm OF TOPSOIL AND LOW MAINTENANCE ECO LAWN SEED MIXTURE 8340 OSC SEEDS ON TOP OF EXISTING GRADE. INCLUDE BONDED FIBRE MATRIX.
- SUPPLY AND INSTALL SILT FENCE PER OPD 219.110. CONTRACTOR TO REINFORCE WITH DOUBLE LAYER AND STRAW BALES WHERE NECESSARY.
- SUPPLY AND INSTALL DECIDUOUS AND CONIFEROUS TREE PER DETAIL 1.2.83/L-500.
- SUPPLY AND INSTALL SHRUB PER DETAIL 485/L-500

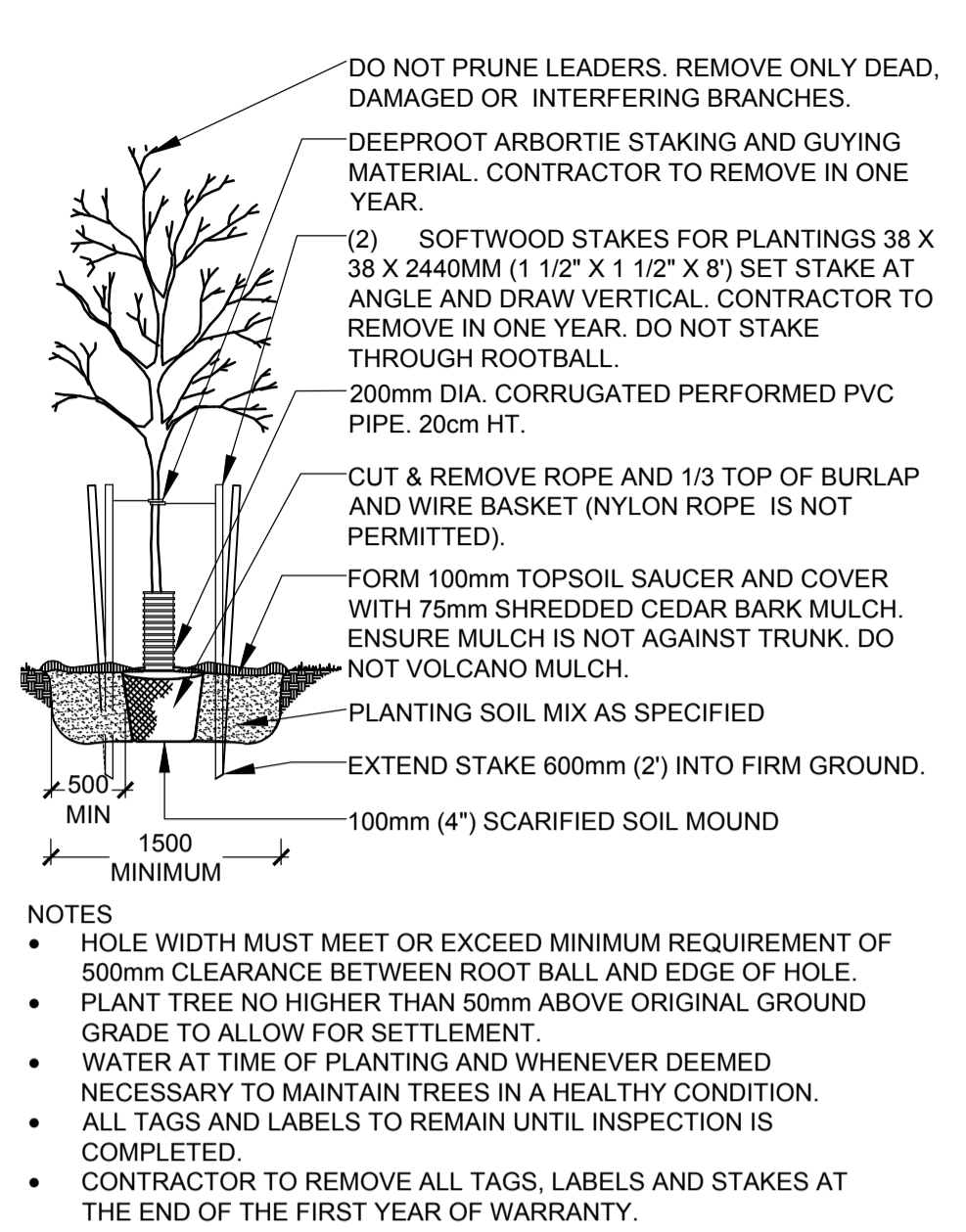
NOTES:

~~1) DUE TO ANCHORING RESTRAINTS, TRAIL INSTALLATION TO BE LIMITED TO 150MM EXCAVATION~~

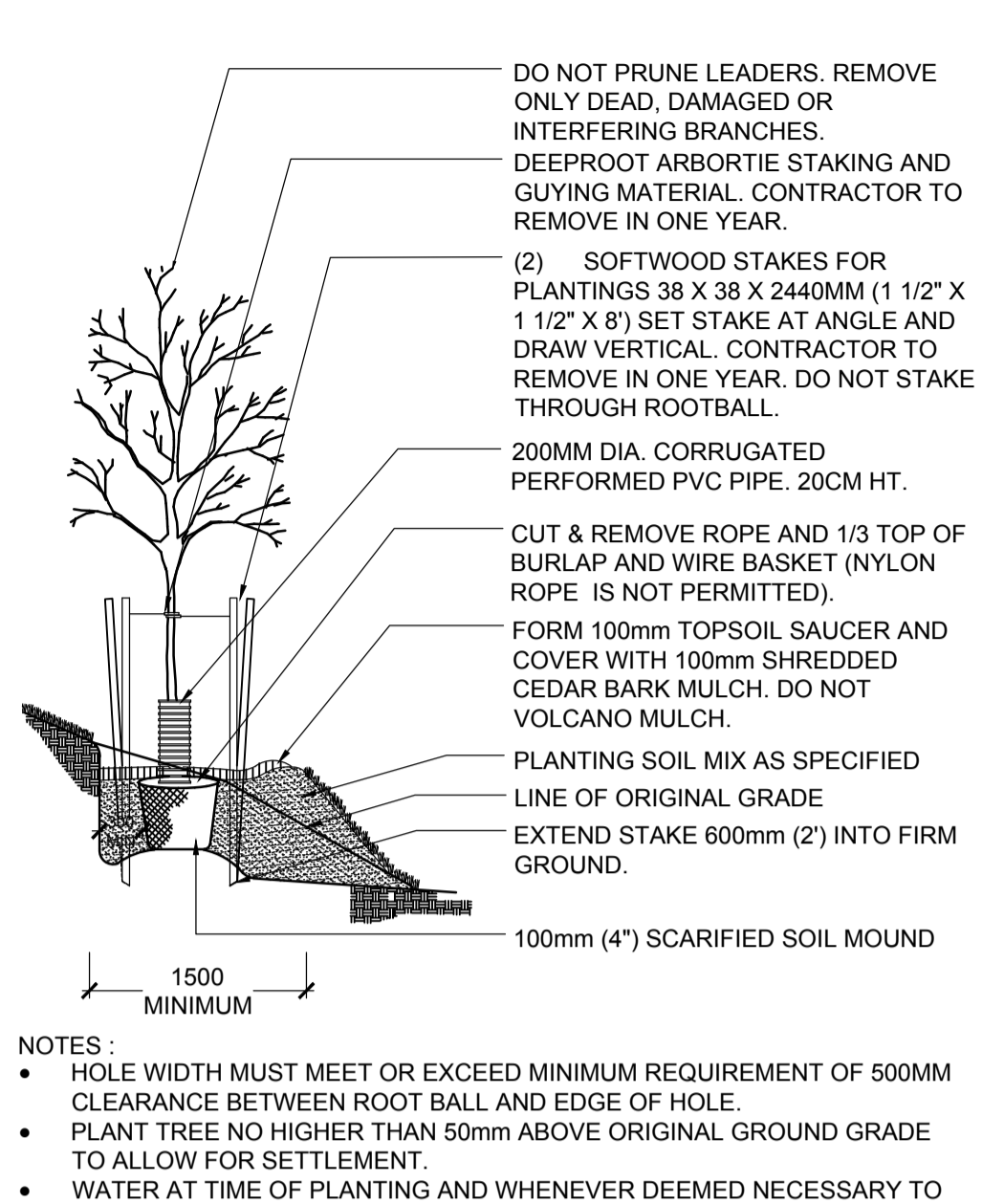
2) WOODY VEGETATION AND UNDERSTOREY REMOVALS TO OCCUR WITH MINIMAL IMPACT BELOW GRADE. PROPOSED HYDROSEED AREAS TO BE TREATED WITH MINIMUM 100MM TOPSOIL AND SMOOTHED TO ELIMINATE DEPRESSIONS. HYDROSEED SLURRY TO INCLUDE BONDED FIBRE MATRIX. ADDITIONAL EROSION CONTROL BLANKETS (NILEX SC32 BD) TO BE INCLUDED AS NECESSARY.



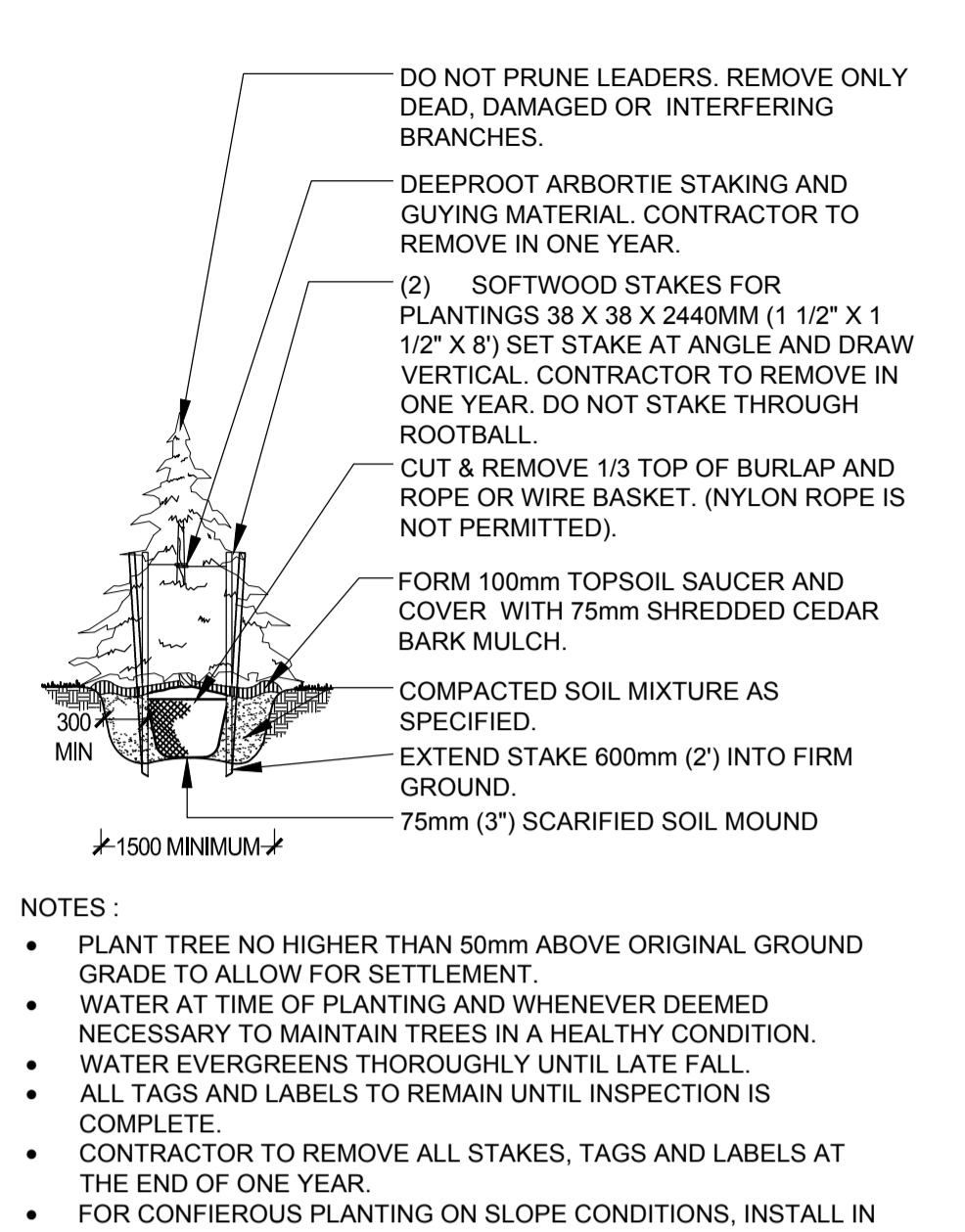
THIS DOCUMENT SHALL NOT BE USED FOR CONSTRUCTION (OR FABRICATION OR INSTALLATION)



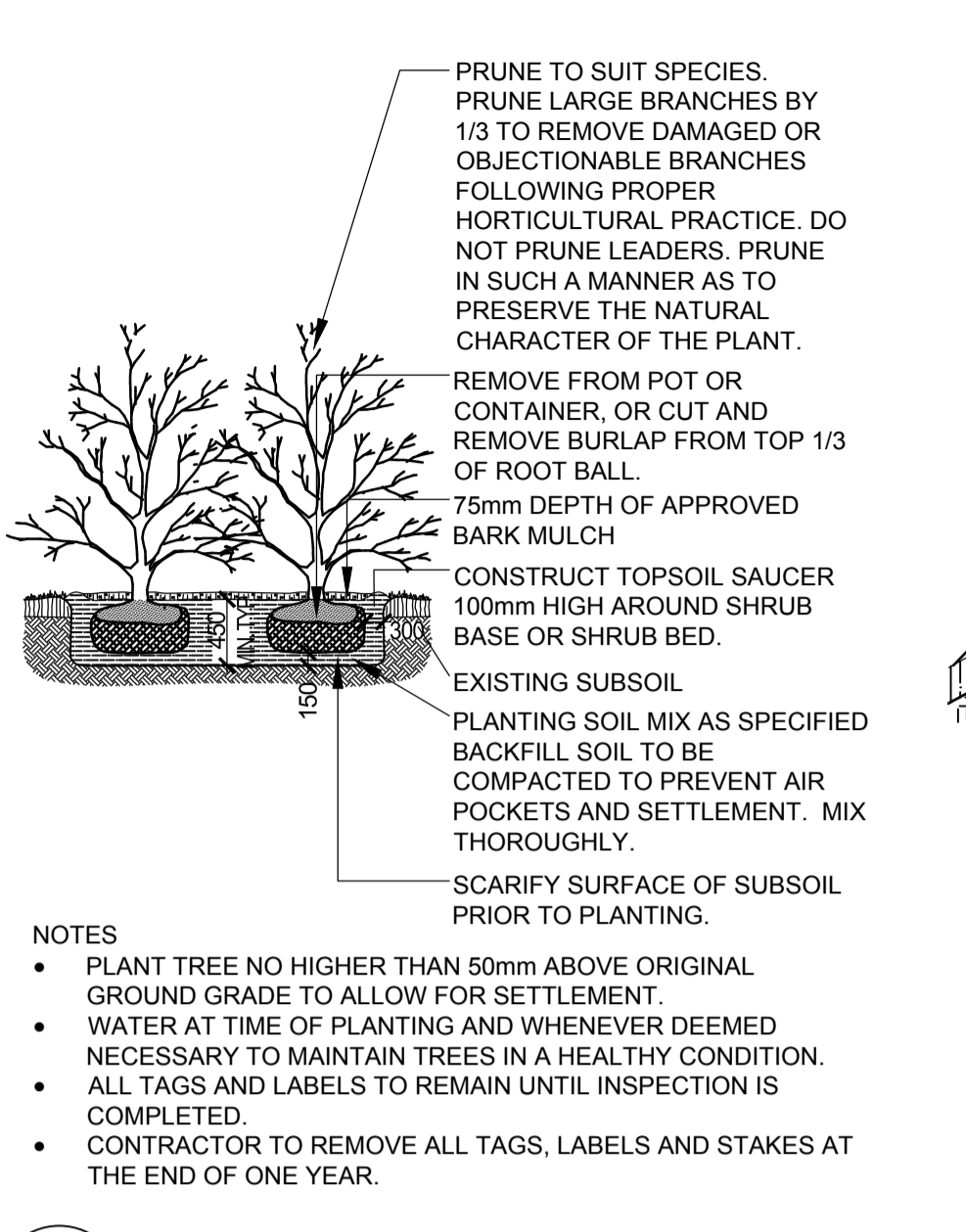
1 DECIDUOUS TREE PLANTING
L-500 NTS



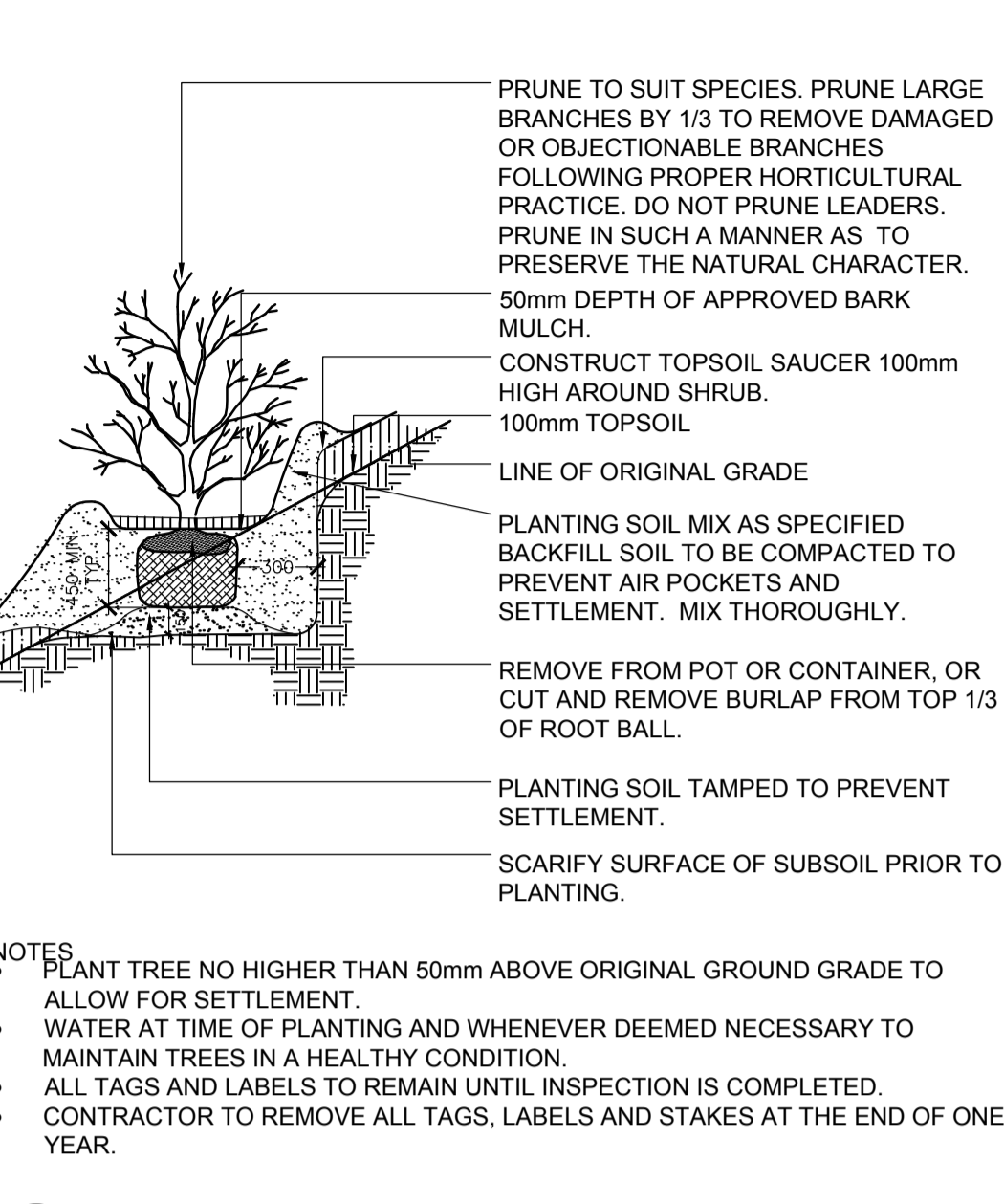
2 DECIDUOUS TREE (SLOPE)
L-500 NTS



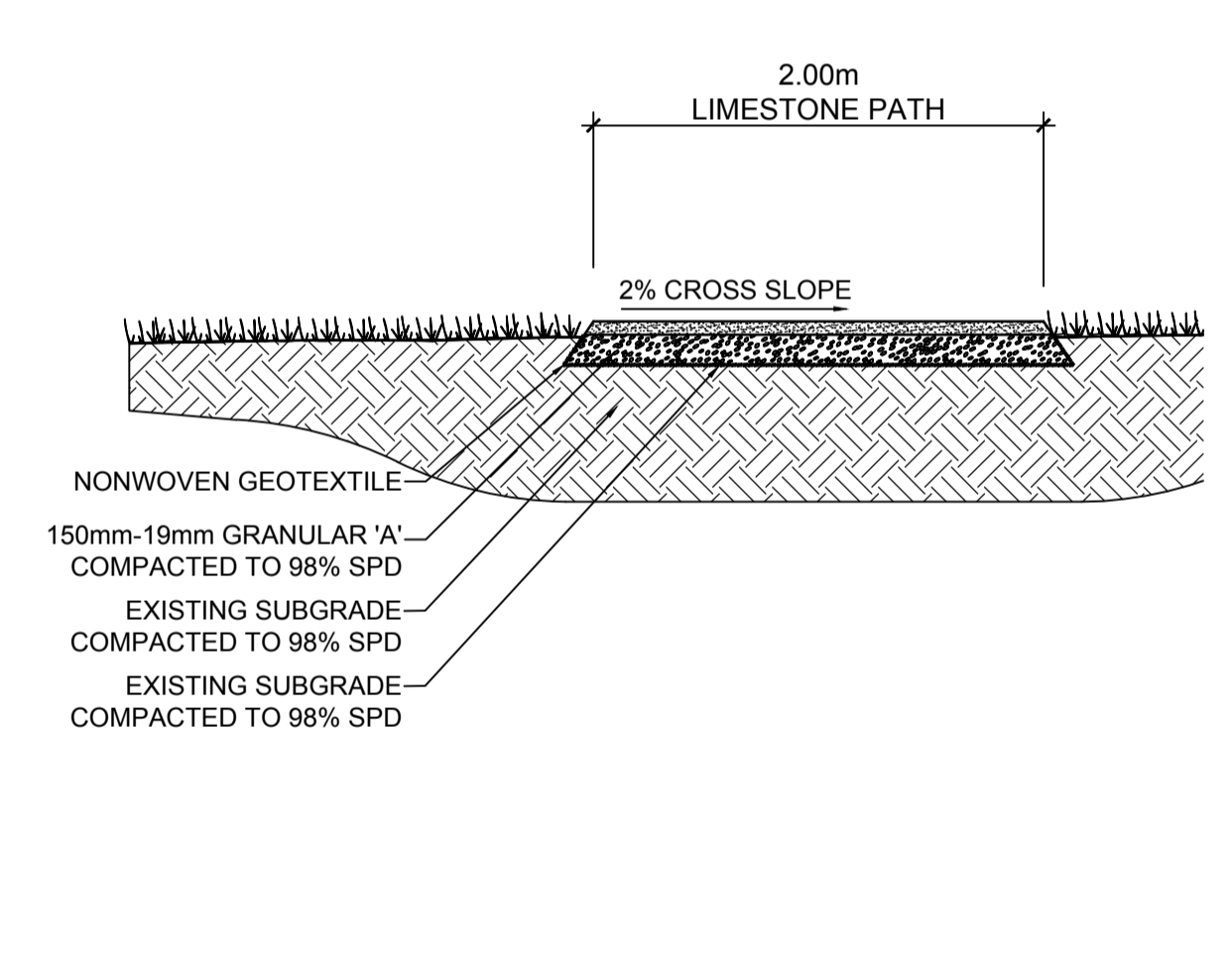
3 CONIFEROUS TREE PLANTING
L-500 NTS



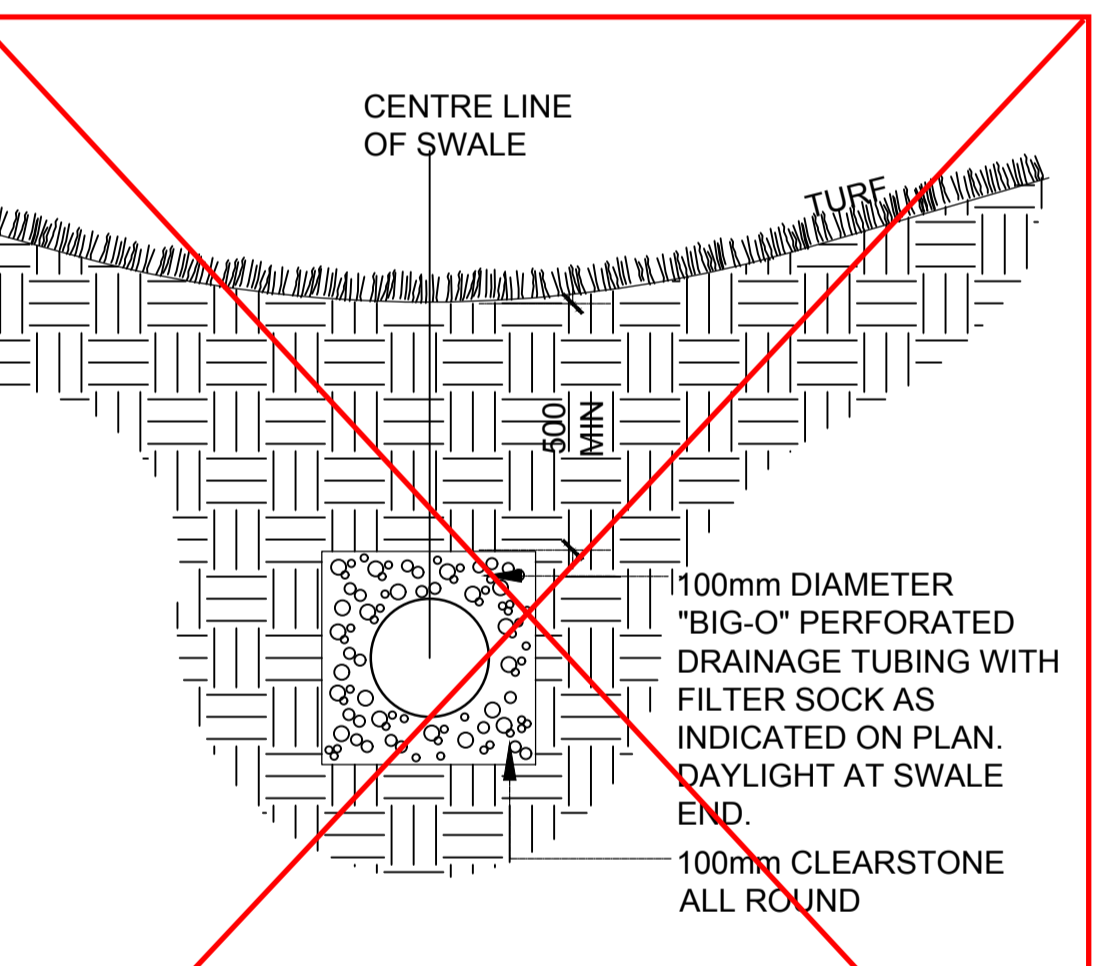
4 SHRUB PLANTING
L-500 NTS



5 SHRUB (SLOPE)
L-500 NTS

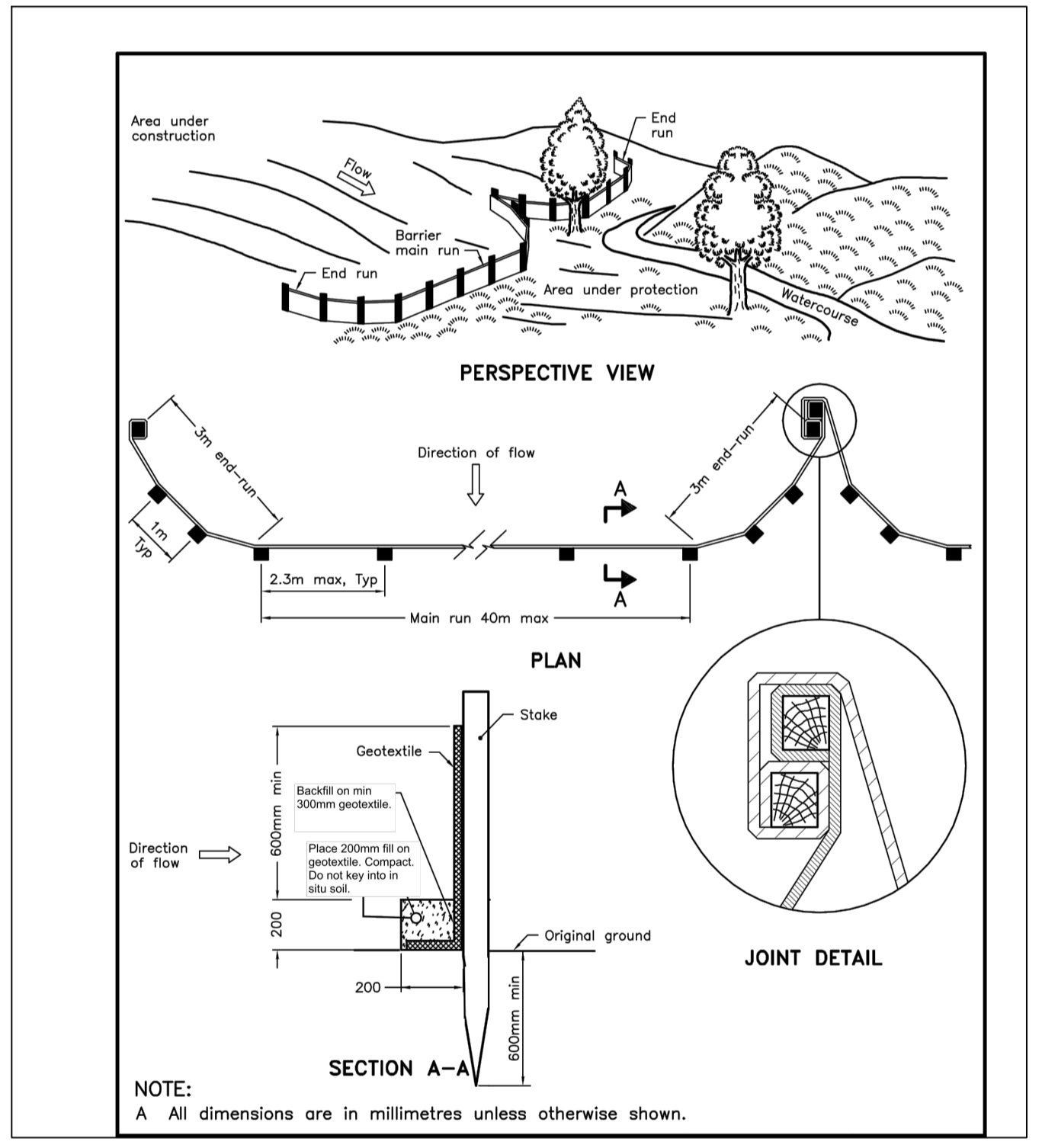


6 LIMESTONE TRAIL
L-500 NTS

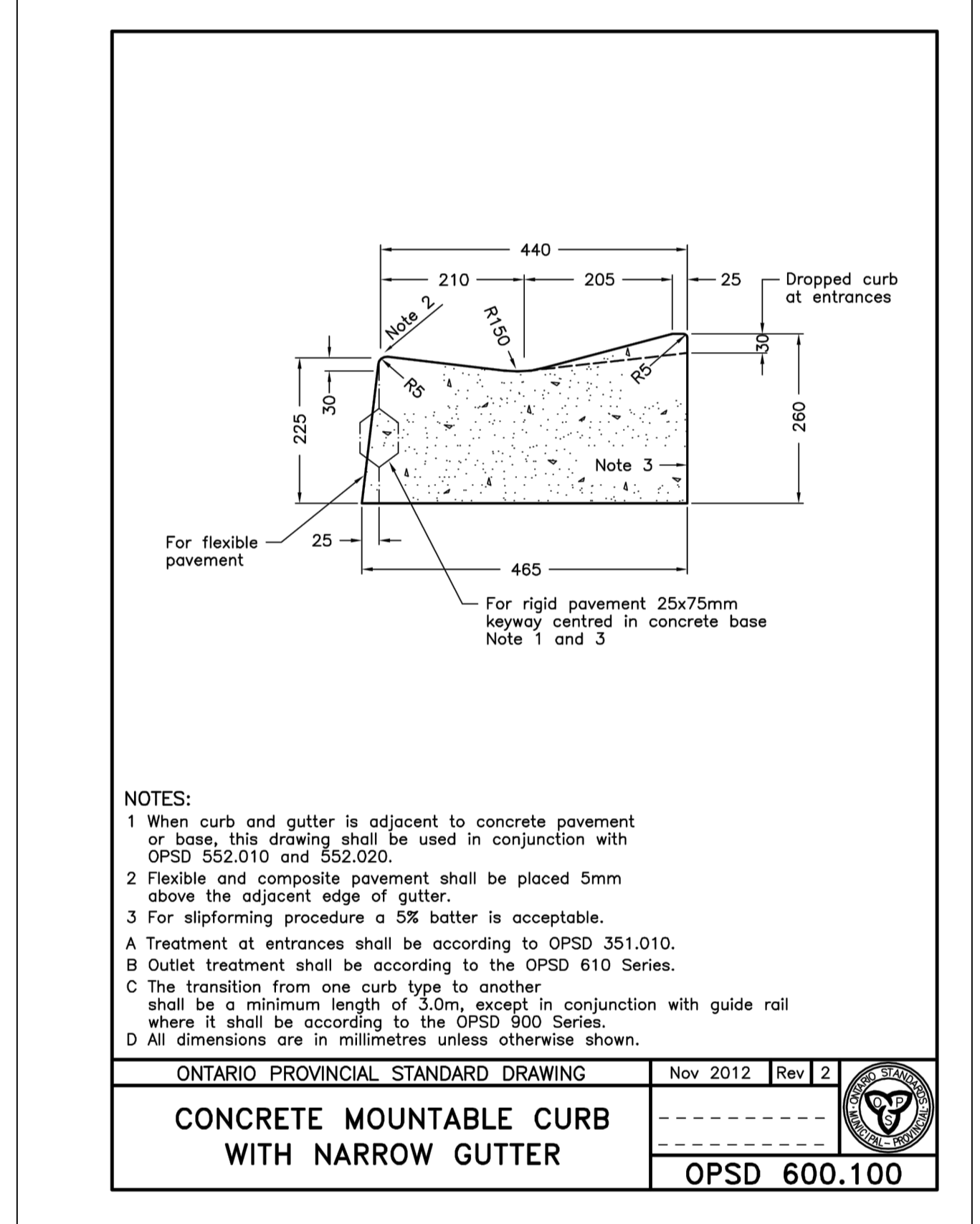


7 SWALE & DRAIN TILE
L-500 NTS

Removed from scope.



8 SILTY FENCE
L-500 NTS



9 CONCRETE MOUNTABLE CURB
L-500 NTS

THIS DOCUMENT SHALL NOT BE USED FOR CONSTRUCTION (OR FABRICATION OR INSTALLATION)

Notes:
1- CONTRACTOR TO VERIFY ALL DIMENSIONS & CONDITIONS ON SITE AND IMMEDIATELY NOTIFY DEPARTMENTAL REPRESENTATIVE OF ALL DISCREPANCIES.
2- DRAWING IS BASED ON SURVEYS BY MONTEITH & SUTHERLAND LTD. COMPLETED IN THE FIELD ON NOVEMBER 24, 2017 & JANUARY 29, 2018. SURVEY IN NAD83 UTM17 CSRS COORDINATE SYSTEM. ELEVATIONS ARE IN METRES RELATIVE TO LAKE ONTARIO CHART DATUM 0.0, EQUAL TO 74.13 m CGVD28.



E	ISSUE FOR TENDER	2019-10-07
D	100% SUBMISSION	2019-09-25
C	99% SUBMISSION	2019-09-06
B	50% SUBMISSION	2019-08-08
A	OPTION ANALYSIS	2019-07-19

revisions	description	date
A	A detail no. du detail	
B	B location drawing no. sur dessin no.	
C	C drawing no. dessin no.	

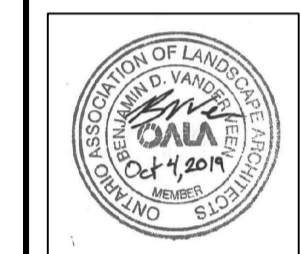
project
NIAGARA SHORE PROTECTION LANDSCAPING
FORT MISSISSAUGA

drawing
DETAILS

Designed By	B. Vander Veen	Conçu par	
Date	2019/07/04	(yyyy/mm/dd)	
Drawn By	B. Vander Veen	Dessiné par	
Date	2019/07/04	(yyyy/mm/dd)	
Reviewed By	A Gebhardt	Examiné par	
Date	2019/07/04	(yyyy/mm/dd)	
Approved By	A Gebhardt	Approuvé par	
Date	2019/07/04	(yyyy/mm/dd)	
Tender		Soumission	
Project Manager		Administrateur de projets	
Project no.		No. du projet	1862
Drawing no.		No. du dessin	L-500

Notes:

- CONTRACTOR TO VERIFY ALL DIMENSIONS & CONDITIONS ON SITE AND IMMEDIATELY NOTIFY DEPARTMENTAL REPRESENTATIVE OF ALL DISCREPANCIES.
- DRAWING IS BASED ON SURVEYS BY MONTEITH & SUTHERLAND LTD. COMPLETED IN THE FIELD ON NOVEMBER 24, 2017 & JANUARY 29, 2018. SURVEY IN NAD83 UTM17 CSRS COORDINATE SYSTEM. ELEVATIONS ARE IN METRES RELATIVE TO LAKE ONTARIO CHART DATUM 0.0, EQUAL TO 74.13 m CGVD28.



E	ISSUE FOR TENDER	2019-10-07
D	100% SUBMISSION	2019-09-25
C	99% SUBMISSION	2019-09-06
B	50% SUBMISSION	2019-08-08
A	OPTION ANALYSIS	2019-07-19

revisions	description	date
A	A detail no. no. du detail	
B	B location drawing no. sur dessin no.	
C	C drawing no. dessin no.	

project
NIAGARA SHORE PROTECTION LANDSCAPING
FORT MISSISSAUGA

drawing
dessin

DETAILS AND CROSS SECTIONS

Designed By	B. Vander Veen	Conçu par	
Date	2019/07/04	(yyyy/mm/dd)	
Drawn By	B. Vander Veen	Dessiné par	
Date	2019/07/04	(yyyy/mm/dd)	
Reviewed By	A Gebhardt	Examiné par	
Date	2019/07/04	(yyyy/mm/dd)	
Approved By	A Gebhardt	Approuvé par	
Date	2019/07/04	(yyyy/mm/dd)	
Tender		Soumission	

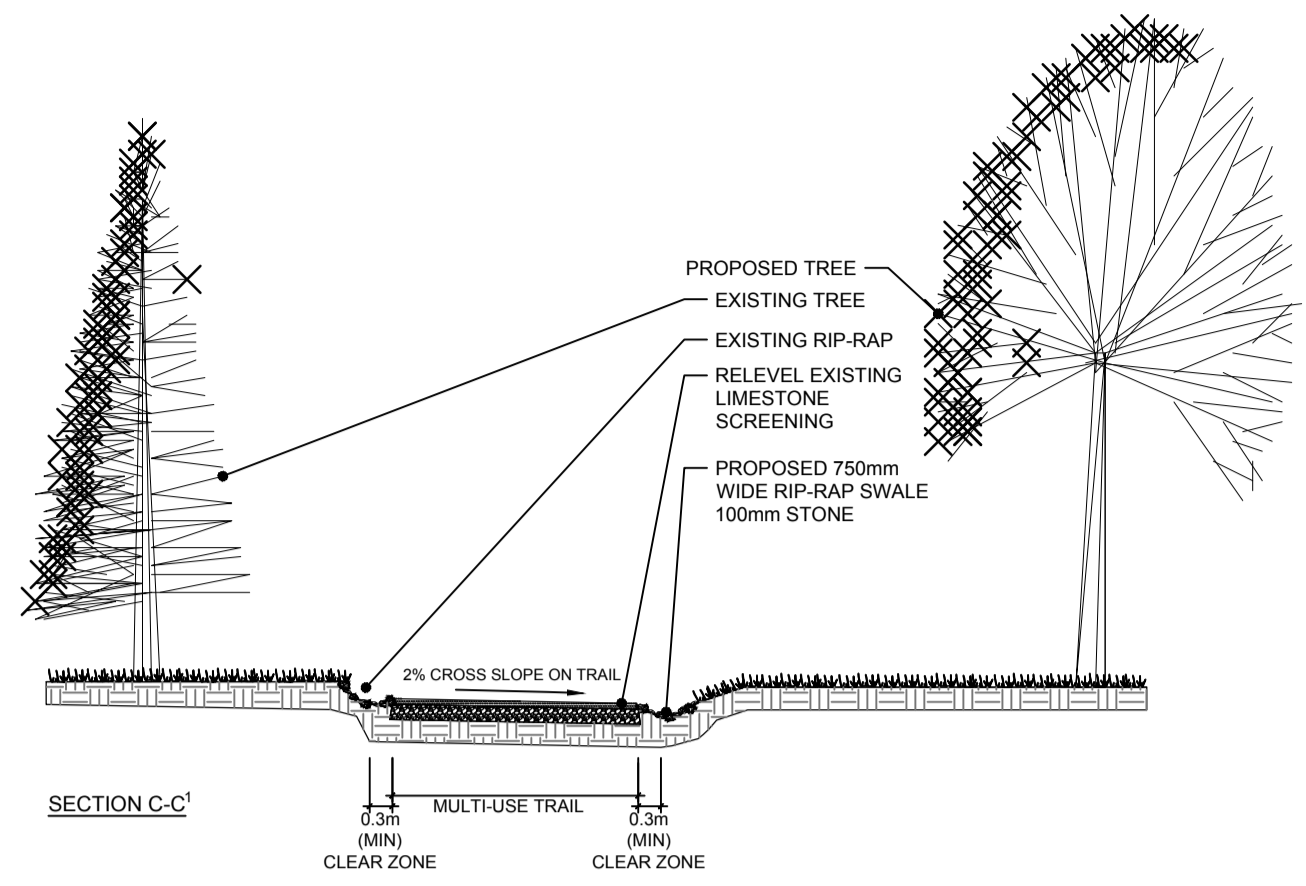
Project Manager / Administrateur de projets
Project no. / No. du projet

1862

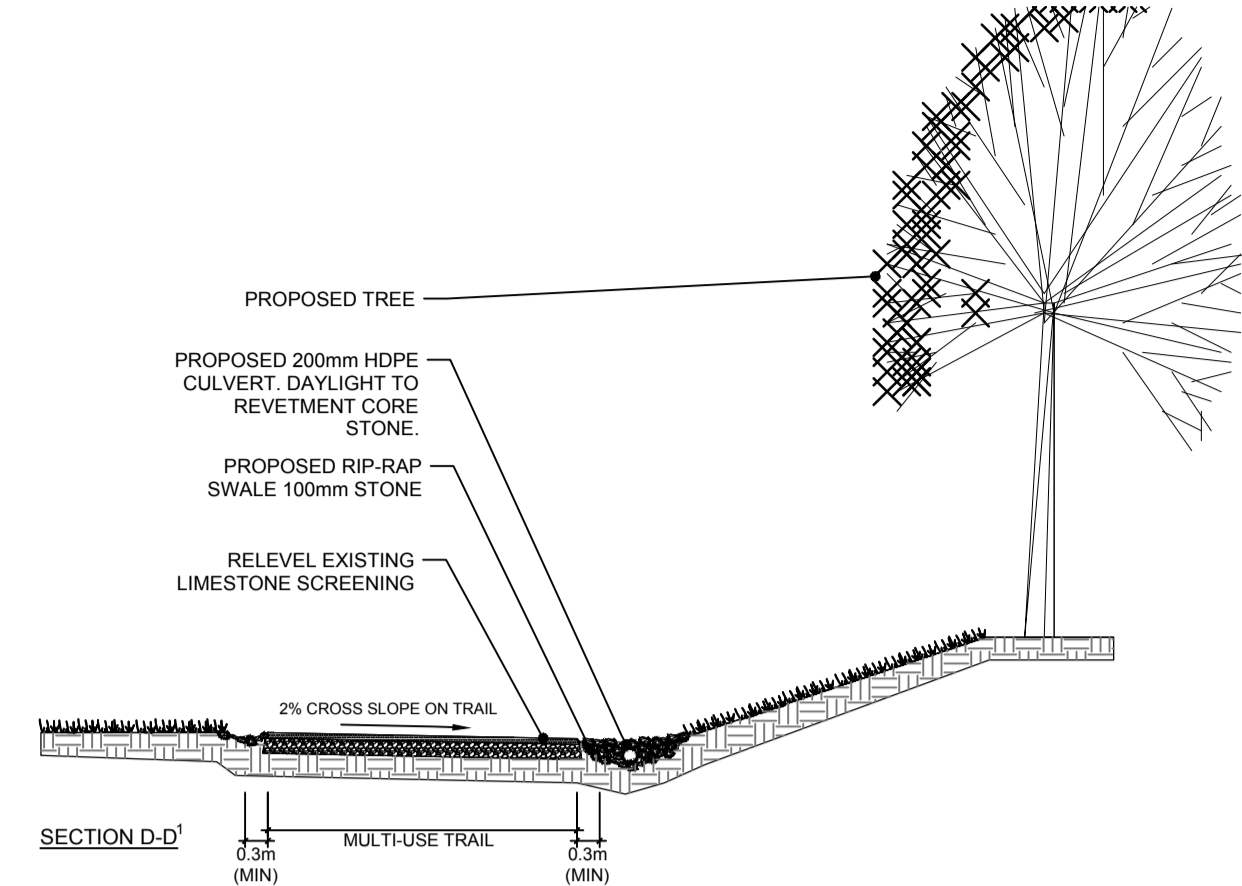
Drawing no. / No. du dessin

L-505

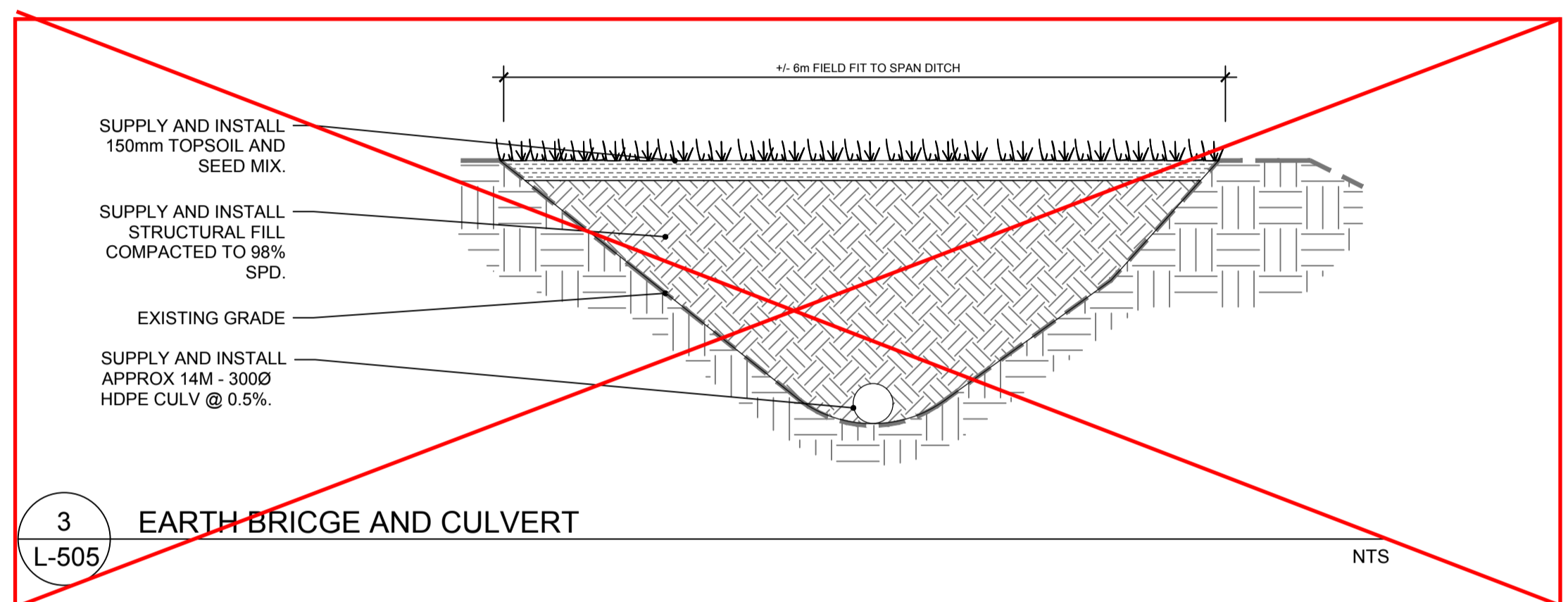
Item removed from scope.



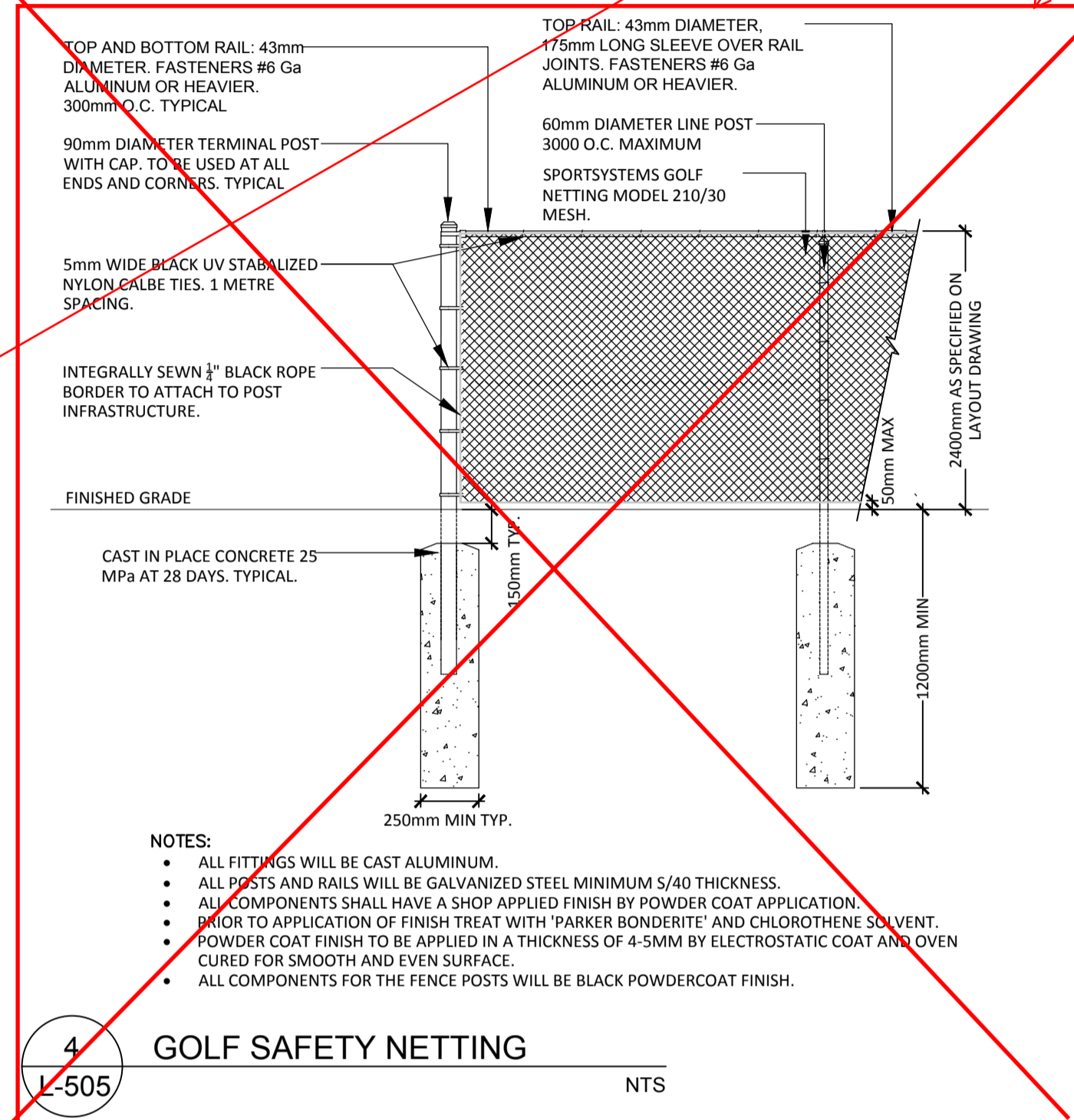
1 LIMESTONE TRAIL AND SWALE (CROSS SECTION A-A1)
L-505 NTS



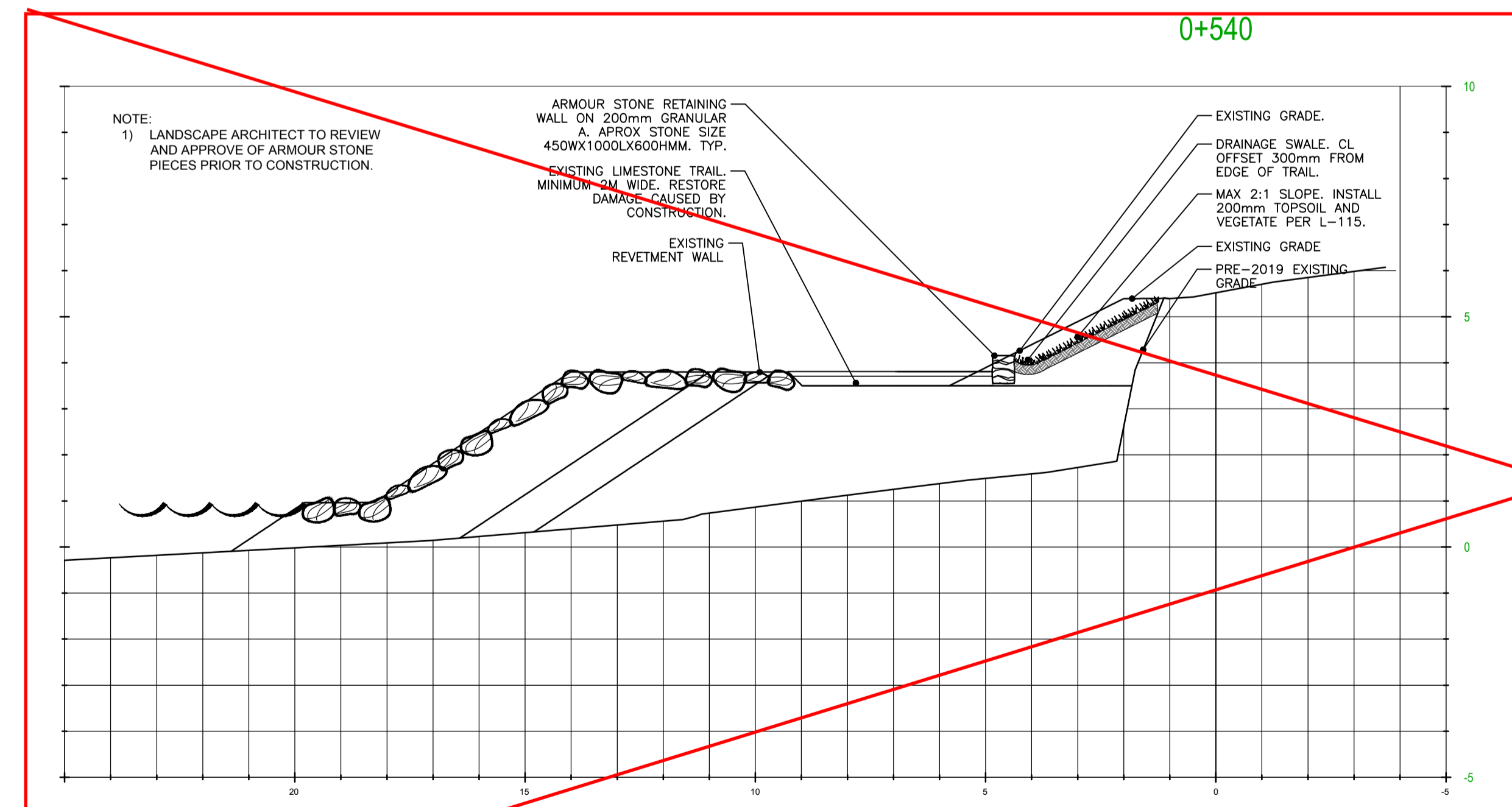
2 LIMESTONE TRAIL AND SWALE (CROSS SECTION B-B1)
L-505 NTS



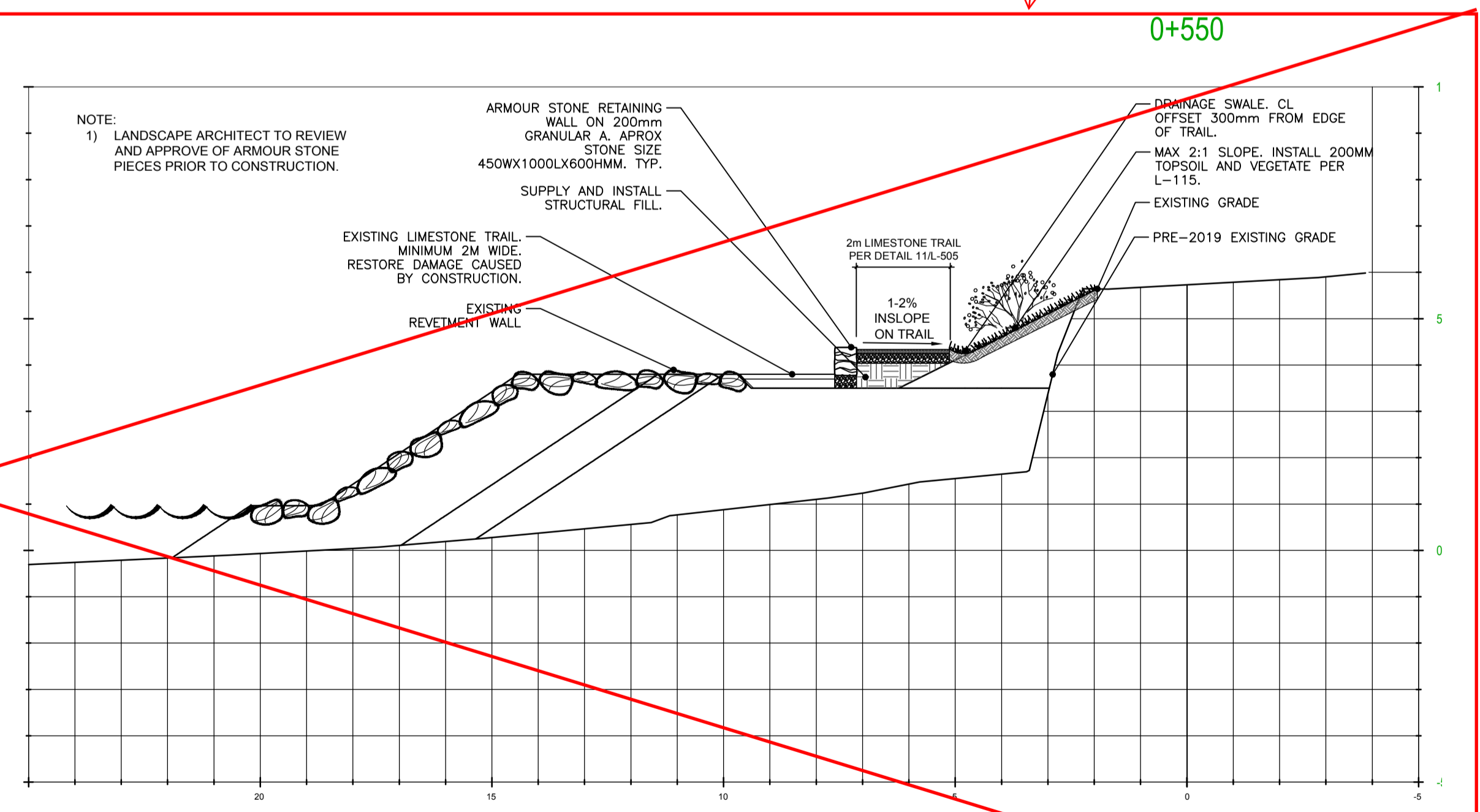
3 EARTH BRIDGE AND CULVERT
L-505 NTS



4 GOLF SAFETY NETTING
L-505 NTS



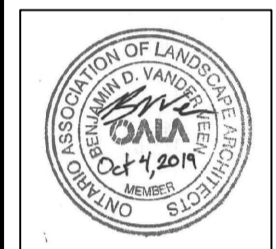
5 STATION 0+540 - TRAIL, ARMOUR STONE AND SWALE CROSS SECTION
L-505 Scale: 1:100



6 STATION 0+550 - TRAIL, ARMOUR STONE AND SWALE CROSS SECTION
L-505 Scale: 1:100

THIS DOCUMENT SHALL NOT BE USED FOR CONSTRUCTION (OR FABRICATION OR INSTALLATION)

- Notes:
- CONTRACTOR TO VERIFY ALL DIMENSIONS & CONDITIONS ON SITE AND IMMEDIATELY NOTIFY DEPARTMENTAL REPRESENTATIVE OF ALL DISCREPANCIES.
 - DRAWING IS BASED ON SURVEYS BY MONTEITH & SUTHERLAND LTD. COMPLETED IN THE FIELD ON NOVEMBER 24, 2017 & JANUARY 29, 2018. SURVEY IN NAD83 UTM17 CSRS COORDINATE SYSTEM. ELEVATIONS ARE IN METRES RELATIVE TO LAKE ONTARIO CHART DATUM 0.0, EQUAL TO 74.13 m CGVD28.



revisions	description	date
E	ISSUE FOR TENDER	2019-10-07
D	100% SUBMISSION	2019-09-25
C	99% SUBMISSION	2019-09-06
B	50% SUBMISSION	2019-08-08
A	OPTION ANALYSIS	2019-07-19

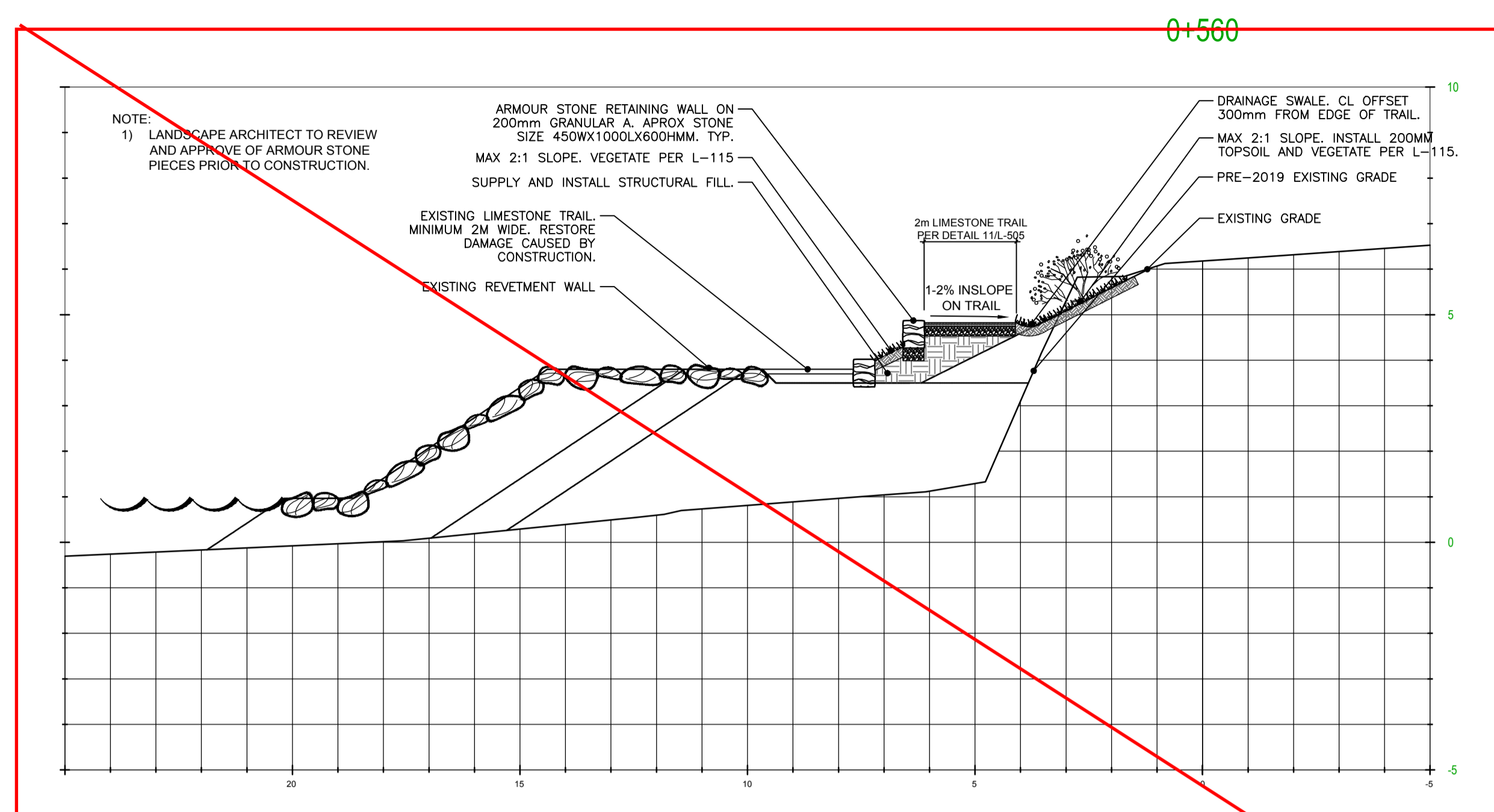
A	B	C
A	B	C

project / projet
NIAGARA SHORE PROTECTION LANDSCAPING
FORT MISSISSAUGA

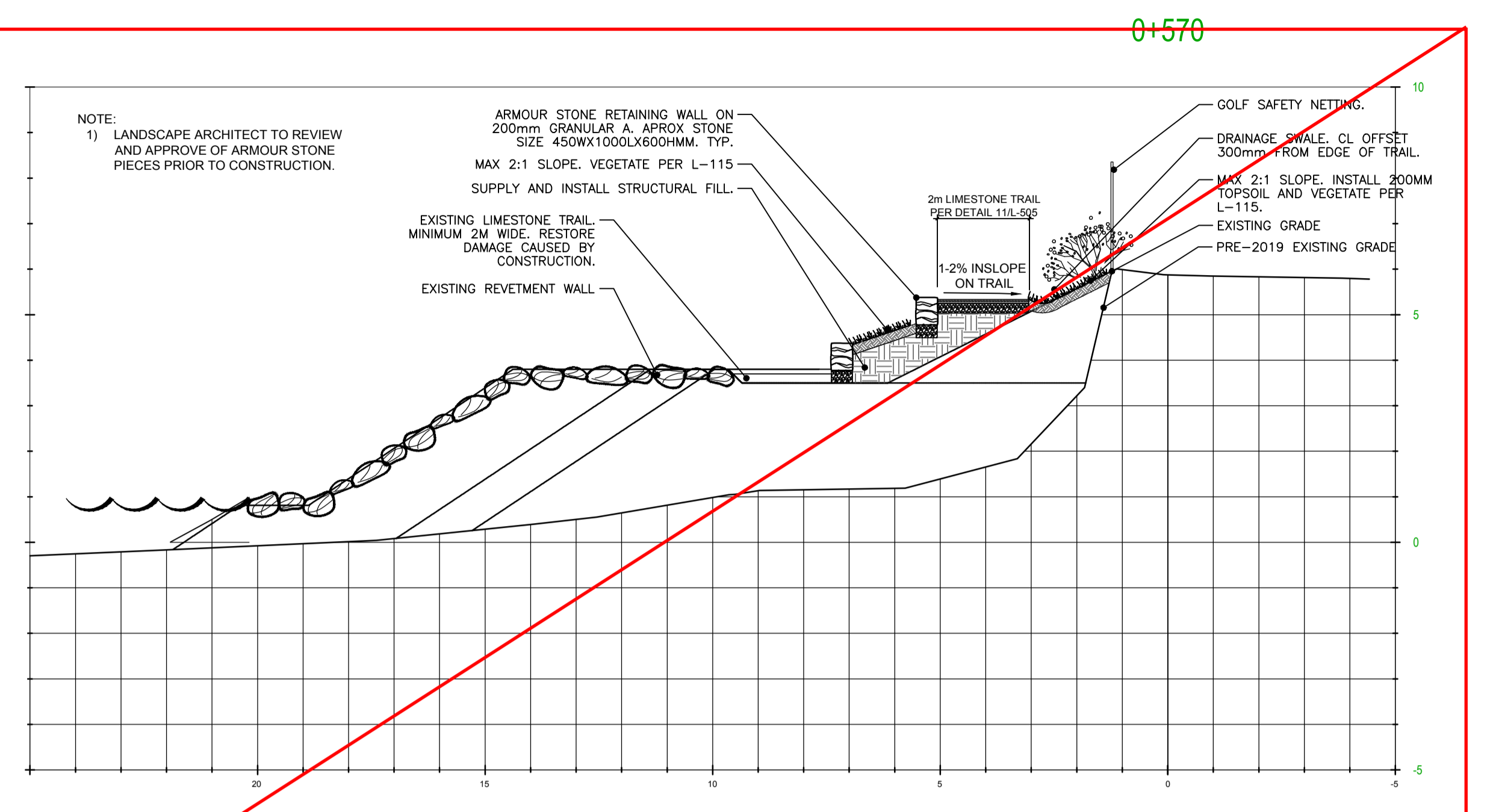
drawing / dessin
CROSS SECTIONS

Designed By / Conçu par: B. Vander Veen
Date: 2019/07/04 (yyyy/mm/dd)
Drawn By / Dessiné par: B. Vander Veen
Date: 2019/07/04 (yyyy/mm/dd)
Reviewed By / Examiné par: A Gebhardt
Date: 2019/07/04 (yyyy/mm/dd)
Approved By / Approuvé par: A Gebhardt
Date: 2019/07/04 (yyyy/mm/dd)
Tender / Soumission

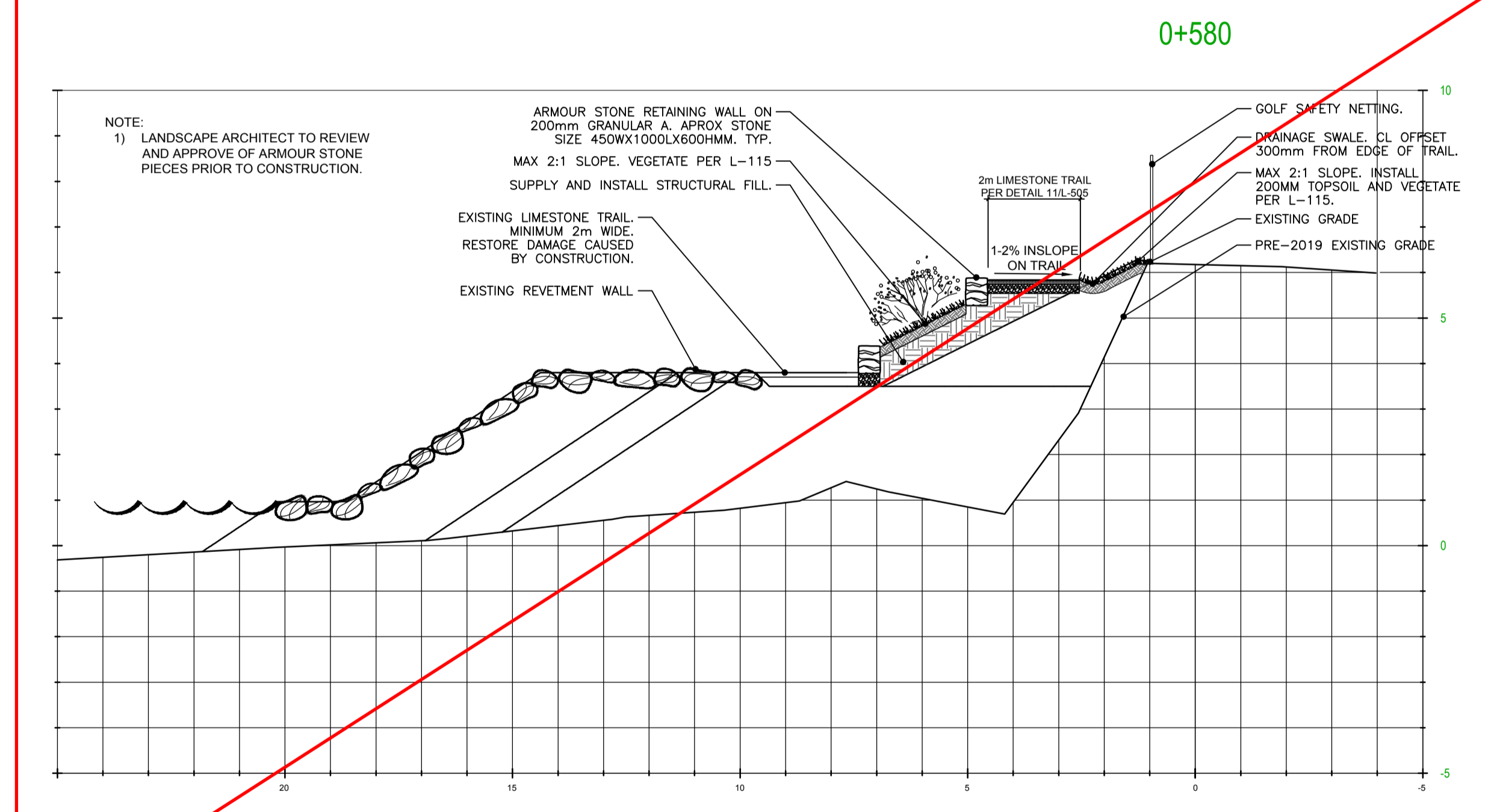
Project Manager / Administrateur de projets
Project no. / No. du projet: 1862
Drawing no. / No. du dessin: L-510



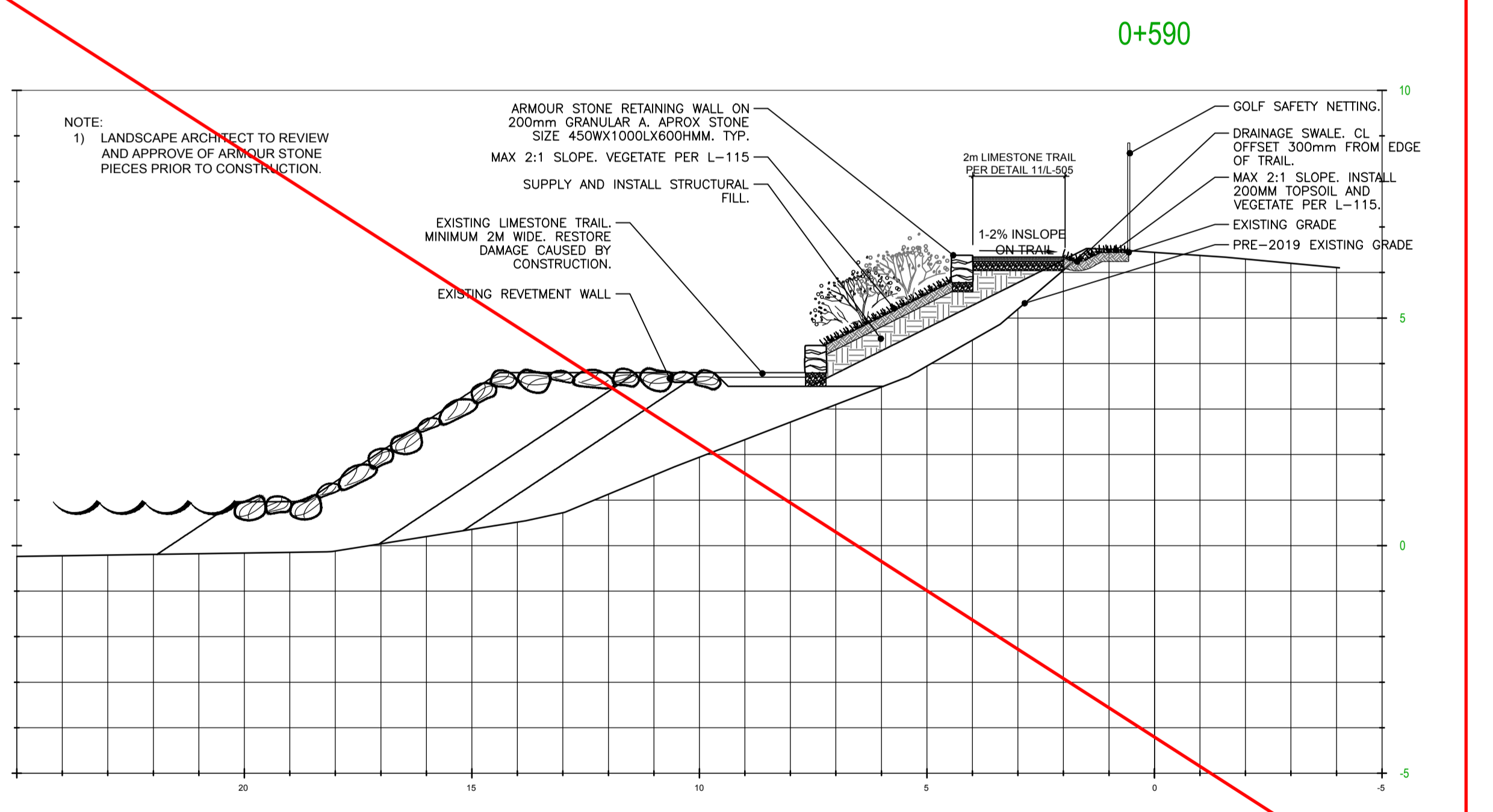
1 STATION 0+560 - TRAIL, ARMOUR STONE AND SWALE CROSS SECTION Scale: 1:100



2 STATION 0+570 - TRAIL, ARMOUR STONE AND SWALE CROSS SECTION Scale: 1:100



3 STATION 0+580 - TRAIL, ARMOUR STONE AND SWALE CROSS SECTION Scale: 1:100



4 STATION 0+590 - TRAIL, ARMOUR STONE AND SWALE CROSS SECTION Scale: 1:100

Item removed from scope.

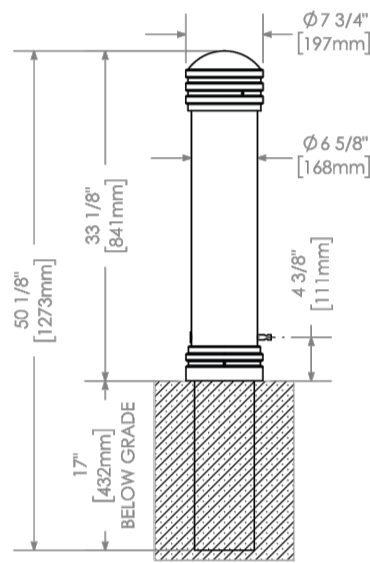
THIS DOCUMENT SHALL NOT BE USED FOR CONSTRUCTION (OR FABRICATION OR INSTALLATION)

MTB650-B4

650 Series



MATERIALS: The bollard post is constructed of H.S. steel tube. The top and bottom are capped with cast aluminum parts.
FINISH: All steel components are protected with E-Coat rust proofing. The Maglin Powdercoat System provides a durable finish on all metal surfaces.
INSTALLATION: Base Type- B4 base tubing sleeve is set into concrete. Bollard slides over sleeve and is fastened together by a pin through the outer and inner tubes. A padlock can be used to lock the bollard in position. This bollard type is easy to remove frequently.
TO SPECIFY: Select: MTB650-B4
 Choose: Powdercoat Color **BLACK**
OPTIONS:
 - Eye bolts for chain
 - Swing Gate



DIMENSIONS:
 Height: 33.13\"/>

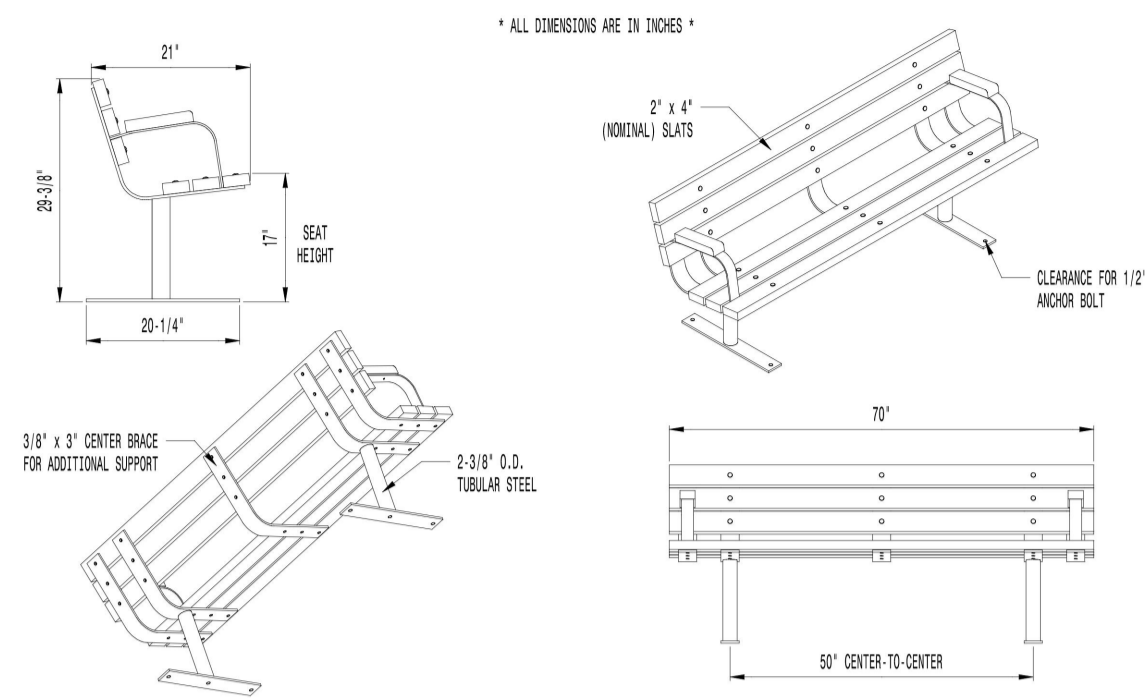


T 800-716-8500
 F 973-260-9924
 www.maglin.com
 sales@maglin.com

1 REMOVEABLE BOLLARD

NTS

NO OPTIONAL ARMRESTS TO BE INCLUDED



AVAILABLE OPTIONS:
POWDER COATING:
 - **MAT BLACK**
SLAT TYPES:
 - **WESTERN RED CEDAR OR APPROVED EQUIVALENT**
ARMRESTS (BOLT-ON):
 - ****NO ARMRESTS****

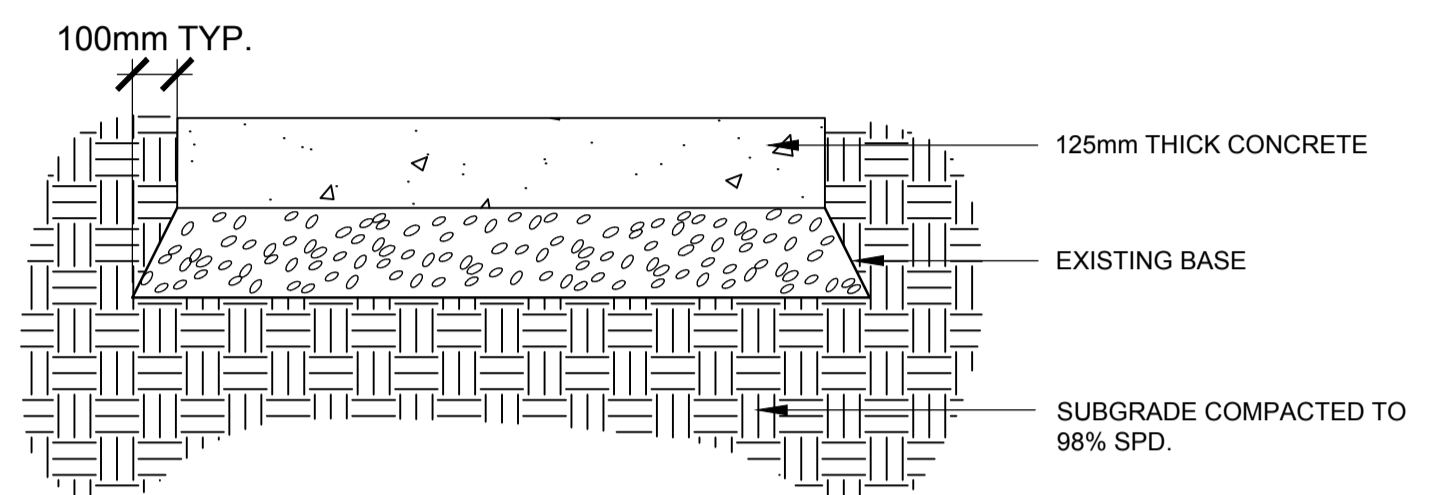
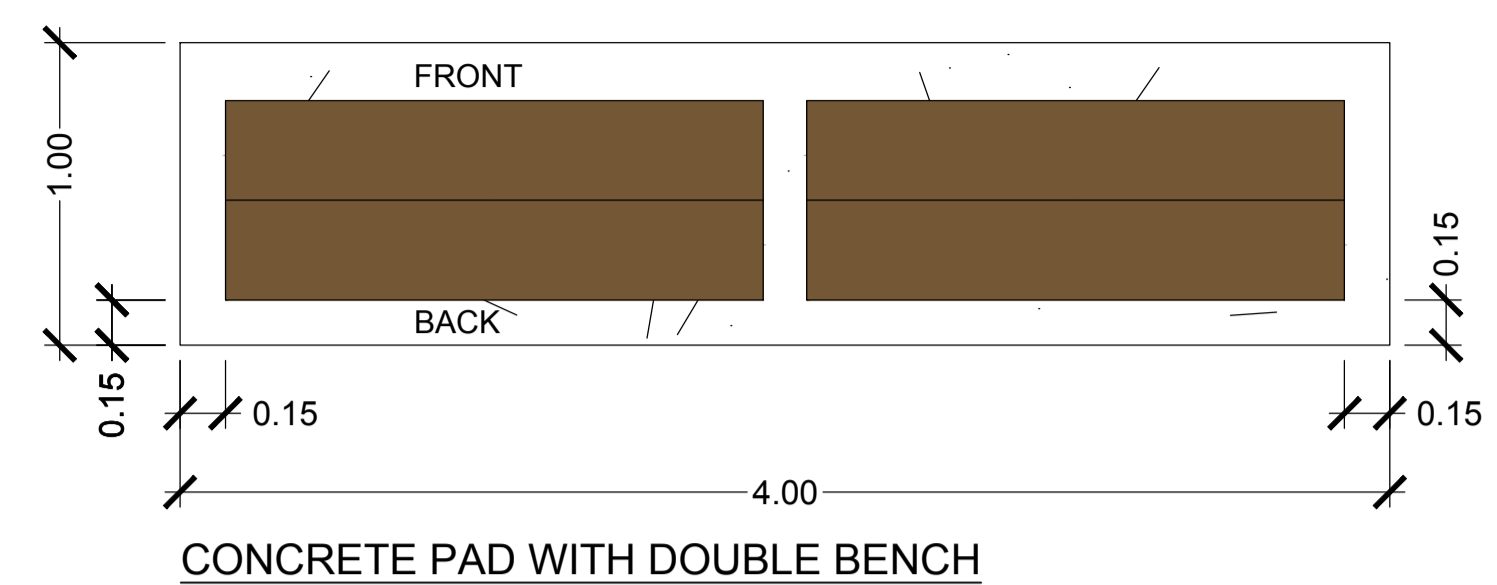
- NOTES:**
1. DIMENSIONS NOT TO SCALE. DO NOT SCALE DRAWINGS.
 2. ALL FABRICATED METAL COMPONENTS ARE STEEL. UNPAINTED, STITCHED, PREPARED, PREHEATED, AND ELECTROSTATICALLY POWDER-COATED WITH T.O.I.C. POLYESTER POWDER COATINGS. PRODUCTS ARE FULLY CLEANED AND PREHEATED, PREHEATED AND COATED IN ORDER TO FULL PRESERVE AND BUILD COATING FILM. COATED PARTS ARE THEN FULLY CURED TO COATING MANUFACTURER'S SPECIFICATIONS. THE THICKNESS OF THE RESULTING FINISH MEASURES 0.18 MILS (200-250 MICRONS).
 3. IT IS NOT RECOMMENDED TO LOCATE ANCHOR BOLTS UNTIL BENCH IS IN PLACE. THIS VICTOR STANLEY, INC. PRODUCT MUST BE PERMANENTLY AFFIXED TO THE GROUND. CONSULT YOUR LOCAL CODES FOR REGULATIONS.
 4. ANCHOR BOLTS NOT PROVIDED BY VICTOR STANLEY, INC.
 5. FOR HIGH SALT ABRASIVE ENVIRONMENTS, HOT-DIP GALVANIZING BEFORE POWDER COATING IS AVAILABLE. HOT-DIP GALVANIZING IS PERFORMED FOR VICTOR STANLEY, INC. BY AN EXPERIENCED QUALIFIED FIRM TO MEET PRODUCTS ARE SHIPPED FOR GALVANIZING. HOT-DIP GALVANIZING INCLUDES AN AGGRESSIVE PRE-TREATMENT AND IMMERSION IN A TANK OF CHANGED LIQUID ZINC AT 200 DEGREES F (90°C). THE RESULTING SURFACE IS RESISTANT TO RUST AND HAS SOME IMPROVED RESISTANCE FROM THE DRAINING OF THE ZINC TO THE STEEL SURFACE. AS A RESULT, THE PROTECTIVE SURFACE FINISH OVER THIS GALVANIZED SURFACE MAY CRACK, DISINTEGRATE, AND MAY NOT BE AS SMOOTH AS THE STANDARD FINISH. THIS LENGTH AND INCONSISTENT FINISH IS NORMAL FOR GALVANIZING. CONTACT MANUFACTURER FOR DETAILS.
 6. ALL SPECIFICATIONS ARE SUBJECT TO CHANGE. CONTACT MANUFACTURER FOR DETAILS.
 7. THIS PRODUCT IS SHIPPED PARTIALLY ASSEMBLED.

2\"/>

COPYRIGHT 2017 VICTOR STANLEY, INC. ALL RIGHTS RESERVED. REV. 10/31/17 DRAWN V.F.T. 2017-711

2 BENCH AND CONCRETE PAD

NTS



- NOTES:**
- BROOM FINISH
 - CONCRETE TO BE 35MPA COMPRESSIVE STRENGTH AT 28 DAYS WITH 5% TO 7% AIR ENTRAINMENT WITH FIBRE REINFORCING (NOVOMESH INFORCE E3 FIBRILLATED POLYPROPYLENE FIBRE TO ADD TO MIXTURE AT 3.0KG PER CUBIC.
 - CONTRACTION JOINTS TO BE LOCATED AT MINIMUM INTERVALS OF 2M O.C.
 - FORM CONTRACTION WITH A DOUBLE EDGER IN FRESH CONCRETE, THEN SAW CUT TO A DEPTH OF 30MM.
 - GEOTECHNICAL CONSULTANT TO APPROVE COMPACTION RATES PRIOR TO POURING OF CONCRETE.
 - SAW CUTS TO BE APPROVED BY CONTRACT ADMINISTRATOR PRIOR TO CUTTING.



Parks Canada / Parcs Canada
 Southwestern Ontario Field Unit / Unité de gestion du Sud-Ouest de l'Ontario



300-2611 QUEENVIEW DRIVE
 OTTAWA ONTARIO CANADA K2B 8K2
 TEL.: 613-829-2800 | FAX: 613-829-8299 | WWW.WSPGROUP.COM

Notes:
 1- CONTRACTOR TO VERIFY ALL DIMENSIONS & CONDITIONS ON SITE AND IMMEDIATELY NOTIFY DEPARTMENTAL REPRESENTATIVE OF ALL DISCREPANCIES.
 2- DRAWING IS BASED ON SURVEYS BY MONTEITH & SUTHERLAND LTD. COMPLETED IN THE FIELD ON NOVEMBER 24, 2017 & JANUARY 29, 2018. SURVEY IN NAD83 UTM17 CSRS COORDINATE SYSTEM. ELEVATIONS ARE IN METRES RELATIVE TO LAKE ONTARIO CHART DATUM 0.0, EQUAL TO 74.13 m CGVD28.



E	ISSUE FOR TENDER	2019-10-07
D	100% SUBMISSION	2019-09-25
C	99% SUBMISSION	2019-09-06
B	50% SUBMISSION	2019-08-08
A	OPTION ANALYSIS	2019-07-19

revisions	description	date
A	A detail no. no. du detail	
B	B location drawing no. sur dessin no.	
C	C drawing no. dessin no.	

project
NIAGARA SHORE PROTECTION LANDSCAPING
 FORT MISSISSAUGA

drawing
CROSS SECTIONS

Designed By	B. Vander Veen	Conçu par	
Date	2019/07/04	(yyyy/mm/dd)	
Drawn By	B. Vander Veen	Dessiné par	
Date	2019/07/04	(yyyy/mm/dd)	
Reviewed By	A Gebhardt	Examiné par	
Date	2019/07/04	(yyyy/mm/dd)	
Approved By	A Gebhardt	Approuvé par	
Date	2019/07/04	(yyyy/mm/dd)	
Tender		Soumission	

Project Manager / Administrateur de projets
 Project no. / No. du projet

1862
 Drawing no. / No. du dessin
L-515

THIS DOCUMENT SHALL NOT BE USED FOR CONSTRUCTION (OR FABRICATION OR INSTALLATION)