

### MATERIAL LIST

CODE	DESCRIPTION	GRADE	REFERENCE DRAWING	QUANTITY	WEIGHT (kg)
PL1	PL 375 X 330 X 3.2	350 MPa	08733-21	1	3,1
V1	L 75 X 75 X 9,5 X 3063	350 MPa	08733-23	4	131,1
V3	L 75 X 75 X 9,5 X 3038	350 MPa	08733-23	4	130,0
V4	L 89 X 89 X 9,5 X 3038	350 MPa	08733-23	4	153,1
V6	L 100 X 100 X 12,7 X 3038	350 MPa	08733-23	4	232,1
V8	L 127 X 127 X 15,9 X 3038	350 MPa	08733-23	4	360,7
H1	L 75 X 75 X 7,9 X 925	350 MPa	08733-22	27	224,8
H1A	L 75 X 75 X 7,9 X 925	350 MPa	08733-22	9	74,9
H2	L 127 X 127 X 7,9 X 1047	350 MPa	08733-22	2	32,0
H3	L 75 X 75 X 7,9 X 1047	350 MPa	08733-22	2	18,8
H4	L 75 X 75 X 7,9 X 1047	350 MPa	08733-22	2	18,8
H6	L 75 X 75 X 7,9 X 1047	350 MPa	08733-22	1	9,4
H7	L 51 X 51 X 6,4 X 1219	350 MPa	08733-22	1	5,8
X1	L 75X 75 X 7,9 X 1450	350 MPa	08733-22	80	1044,0
X2	FLAT BAR 50 X 6,4 X 1527	350 MPa	08733-22	3	11,7
X6	L 75 X 75 X 7,9 X 1527	350 MPa	08733-22	3	41,2
A1	PL 345 X 300 X 9,5	350 MPa	08733-21	6	45,3
A2	PL 328 X 328 X 6,4	350 MPa	08733-21	16	93,9
A5	"D-RING" ANCHORAGE PLATE FROM "SALA" MODEL 82101630	350 MPa	-	5	-
B1	PL 300 X 538 X 9,5	350 MPa	08733-21	8	96,3
B2	PL 300 X 600 X 9,5	350 MPa	08733-21	32	429,6
B2A	PL 300 X 600 X 9,5	350 MPa	08733-21	16	214,8
B3	PL 229 X 150 X 9,5	350 MPa	08733-21	7	17,9
B4	PL 600 X 300 X 9,5	350 MPa	08733-21	8	107,4
B6	PL 600 X 300 X 9,5	350 MPa	08733-21	8	107,4
S1	FLAT BAR 51 X 6,4 X 342	350 MPa	08733-24	9	7,9
S2	FLAT BAR 51 X 6,4 X 508	350 MPa	08733-24	9	11,7
S3	FLAT BAR 51 X 6,4 X 387	350 MPa	08733-24	9	8,9
J1	FLAT BAR 50 X 6,4 X 229	350 MPa	08733-24	10	5,9
J2	SPACER PL 75 X 75 X 9,5	350 MPa	08733-24	43	18,5
J3	SPACER PL 51 X 51 X 7,9	350 MPa	08733-24	12	1,9
P10	GRATING 916 X 940	W30-102/32x4,8 SERRATED BARS	08733-24	1	17,5
P11	GRATING 610 X 1219	W30-102/32x4,8 SERRATED BARS	08733-24	2	44,5
T17	ANCHOR BOLTS 250	ASTM-A325M	08733-21	16	49,6
P1	PL 92 X 152 X 6,4	350 MPa	08733-21	4	2,8
G1	RAILING AND UPPER DECK	350 MPa	08733-25/26	1	127,2
C4	TOWER BASE	350 MPa	08733-21	4	179,6
E1	LADDER 3048	350 MPa	08733-24	4	127,1
E2	LADDER 1753	350 MPa	08733-24	1	18,7
E5	LADDER 1295	350 MPa	08733-24	1	13,5
-	GALVANIZED FALL PROTECTION DEVICE	-	08733-34	1	-
				<b>TOTAL</b>	<b>4220,0</b>

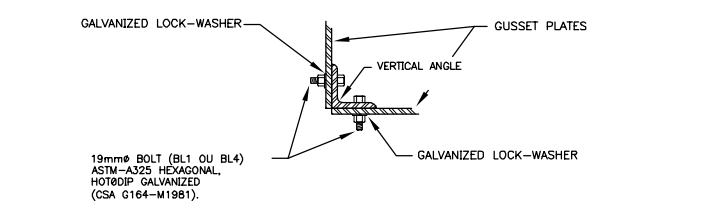
NOTE:  
 THE TOWER SHALL BE EQUIPPED WITH "MILLER" LADDER CLIMBING RAILS "SURE TRACK" TYPE, MODEL 8631 OR EQUIVALENT TO BE APPROVED BY CGG WITH NECESSARY ASSEMBLY AND INSTALLATION HARDWARE ON THE TOWER.

### BOLTS, NUTS AND WASHERS

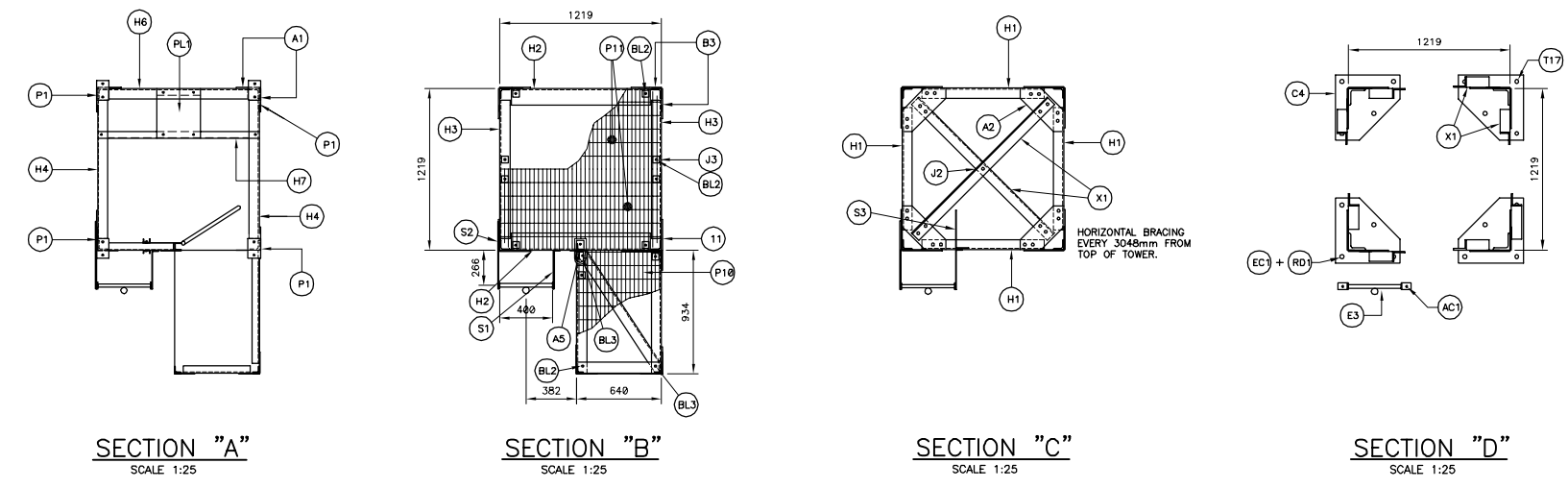
CODE	DESCRIPTION	GRADE	REFERENCE DRAWING	QUANTITY	WEIGHT (kg)
BL1	Ø19mm X 50mm BOLT WITH NUT AND LOCK WASHER	ASTM-A325	S/O	1100	S/O
BL2	Ø13mm X 75mm BOLT WITH NUT AND LOCK WASHER Ø48mm	ASTM-A325	S/O	12	S/O
BL3	Ø13mm X 89mm BOLT WITH NUT AND LOCK WASHER Ø48mm	ASTM-A325	S/O	2	S/O
BL4	Ø19mm X 57mm BOLT WITH NUT AND LOCK WASHER	ASTM-A325	S/O	96	S/O
BL7	Ø13mm X 38mm BOLT WITH NUT AND LOCK WASHER	ASTM-A325	S/O	70	S/O
EC1	ANCHOR BOLT NUTS Ø25mm	240 MPa	08733-21 (T17)	48	S/O
RD1	ANCHOR BOLT WASHERS Ø25mm	240 MPa	08733-21 (T17)	32	S/O
AC1	CHEMICAL ANCHORAGE FOR LADDER, Ø13mm, L=155mm	ASTM-A325, HY-150 FROM MILL II	08733-24 (E3)	2	S/O

NOTES:  
 - ALL STEEL AND BOLTS SHALL BE HOT GALVANIZED ACCORDING TO CAN/CSA-G154 (MINIMUM APPLICATION RATE = 600g/m<sup>2</sup>)  
 - BOLT HOLE DIAMETER SHALL BE 2mm GREATER THAN BOLT DIAMETER UNLESS OTHERWISE NOTED.

NOTES:  
 - CAPACITY OF STRUCTURE TO WHICH "D-RING" ANCHORAGE CONNECTOR IS ATTACHED = 18 kN  
 - "D-RING" ANCHORAGE CONNECTOR:  
 \*NO MORE THAN ONE PERSONAL PROTECTIVE SYSTEM MAY BE CONNECTED AT ONE TIME.  
 \*MAXIMUM CAPACITY = 140 kg  
 \*MAXIMUM FREE FALL HEIGHT = 1,8m



**BOLTING DETAIL (TYPE)**  
 N.T.S.



Revisión	Description	Par/By	Date
4	FALL ARRESTING DEVICE	P-C.G.	04-11-23
3	FOR CONSTRUCTION	P-C.G.	04-05-31
2	DEFINITE	P-C.G.	04-01-08
1	DEFINITE	P-C.G.	03-12-23

A: Numéro du détail / Detail no.  
 B: Feuille sur laquelle le détail est référencé / Location drawing no.  
 C: Feuille sur laquelle le détail est dessiné / Drawing no.

Toute modification doit être rapportée à: / All modification must be reported to:  
 GARDE CÔTIÈRE, RÉGION LAURENTIENNE / SERVICES TECHNIQUES / Systems électroniques et informatiques / Informations Techniques et Graphiques

### LATTICED STEEL TOWERS

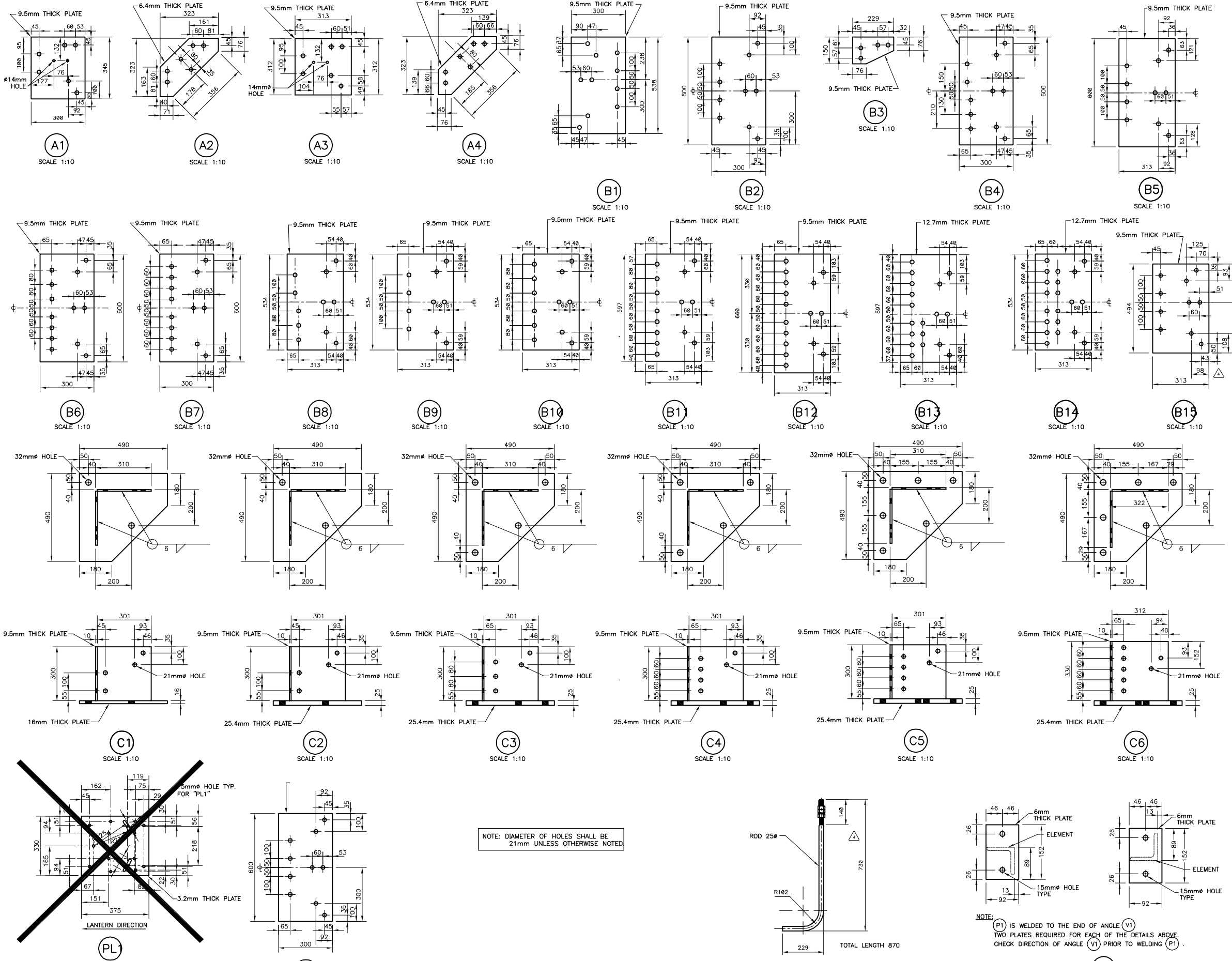
HEIGHT 3m (10ft) @ 24.4m (80ft)

Dessin: / Drawing: 15.2m TOWER (50ft) ERECTING PLAN

Conçu par: / Designed by:	Date
P-C.GAGNON, Ing.	2003/05/30
Dessiné par: / Drawn by:	Date
ERIC GAGNON, tech.	2003/05/30
Vérifié par: / Verified by:	Date
P-C.GAGNON, Ing.	2003/05/30
Approuvé par: / Approved by:	Date

No. dossier: / File no.:	Échelle: / Scale:
	INDICATED
No. dessin: / Drawing no.:	No. feuille: / Sheet no.:
08733	10

Services techniques  
 Systèmes électroniques et informatiques  
 Informations techniques et graphiques  
 191 Bout Champlain (dépt 18)  
 Québec (Québec) G1K 7Y7



NOTE: DIAMETER OF HOLES SHALL BE 21mm UNLESS OTHERWISE NOTED

NOTE: P1 IS WELDED TO THE END OF ANGLE (V1)  
 TWO PLATES REQUIRED FOR EACH OF THE DETAILS ABOVE  
 CHECK DIRECTION OF ANGLE (V1) PRIOR TO WELDING (P1)

3	FOR CONSTRUCTION	P.-C.G.	04-05-31
2	DEFINITIVE	P.-C.G.	04-01-08
1	DEFINITIVE	P.-C.G.	03-12-23

Revision	Description	Par	Date
A	A: Numéro du détail Detail no.		
B	B: Feuille sur laquelle le détail est retiré Location drawing no.		
C	C: Feuille sur laquelle le détail est dessiné Drawing no.		

Toute modification doit être rapportée à:  
 all modification must be reported to:

GARDE CÔTIÈRE, RÉGION LAURENTIENNE  
 SERVICES TECHNIQUES  
 Systèmes électroniques et informatiques  
 Informations Techniques  
 et Graphiques

Dossier:  
 File:

**LATTICED STEEL TOWERS**  
 HEIGHT 3m (10ft) @ 24.4m (80ft)

Dessin:  
 Drawing:

GUSSET, PLATES, TOWER  
 BEARING PLATES & ANCHOR BOLT.  
 SHOP DRAWINGS

Conçu par:  
 Designed by: **P.-C. GAGNON, Ing.** 2003/05/30

Dessiné par:  
 Drawn by: **ERIC GAGNON, tech.** 2003/05/30

Vérifié par:  
 Checked by: **P.-C. GAGNON, Ing.** 2003/05/30

Approuvé par:  
 Approved by:

No. dossier:  
 File no.:

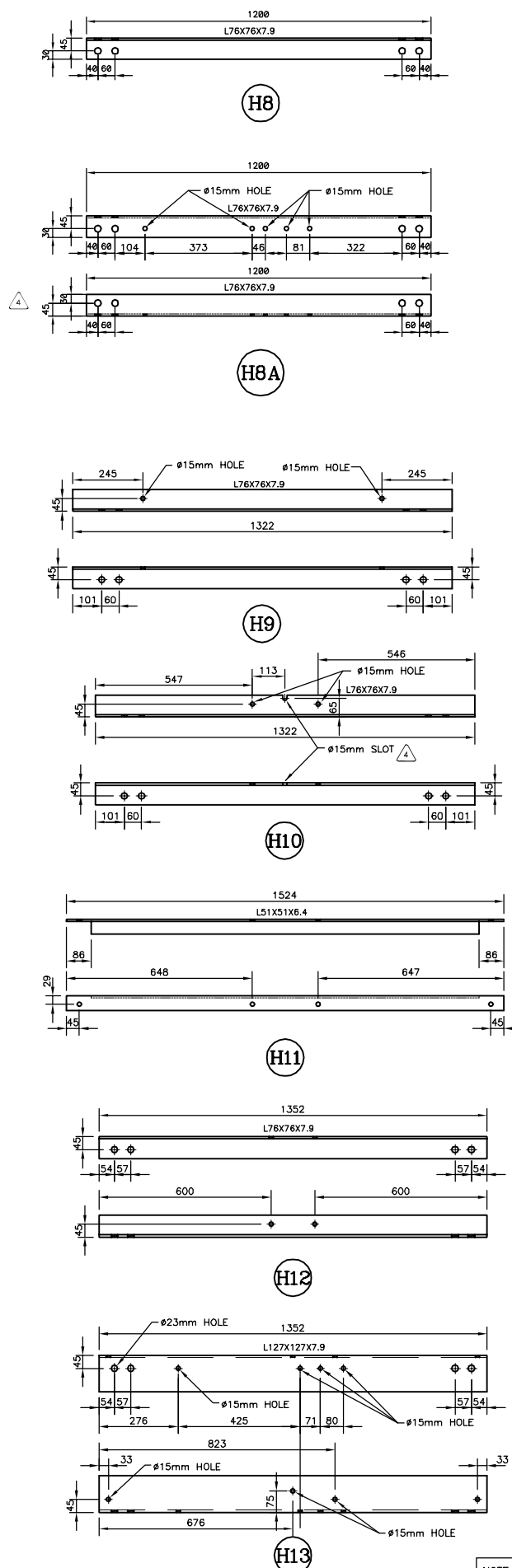
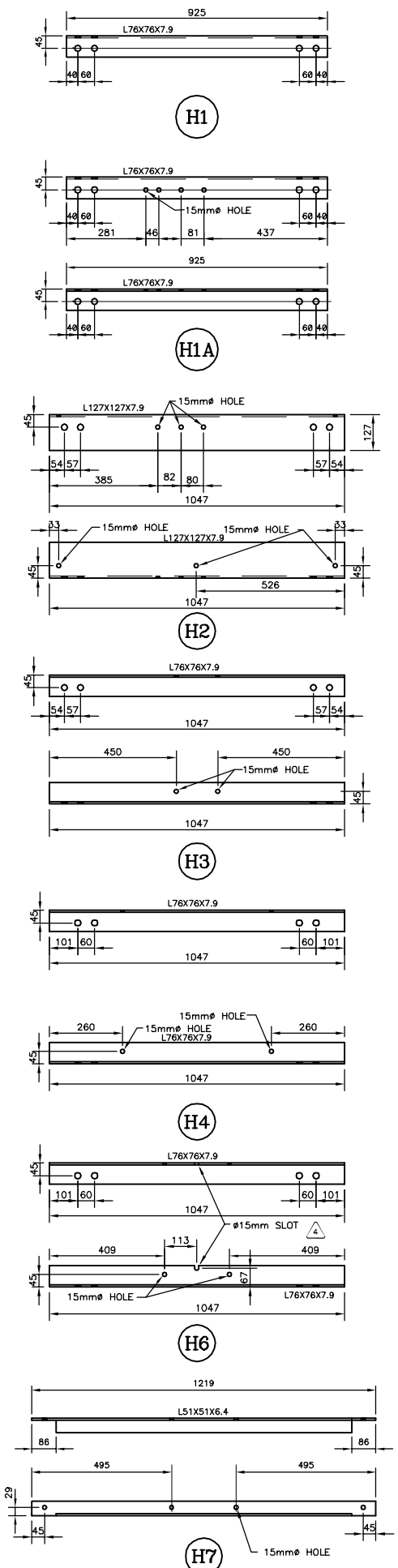
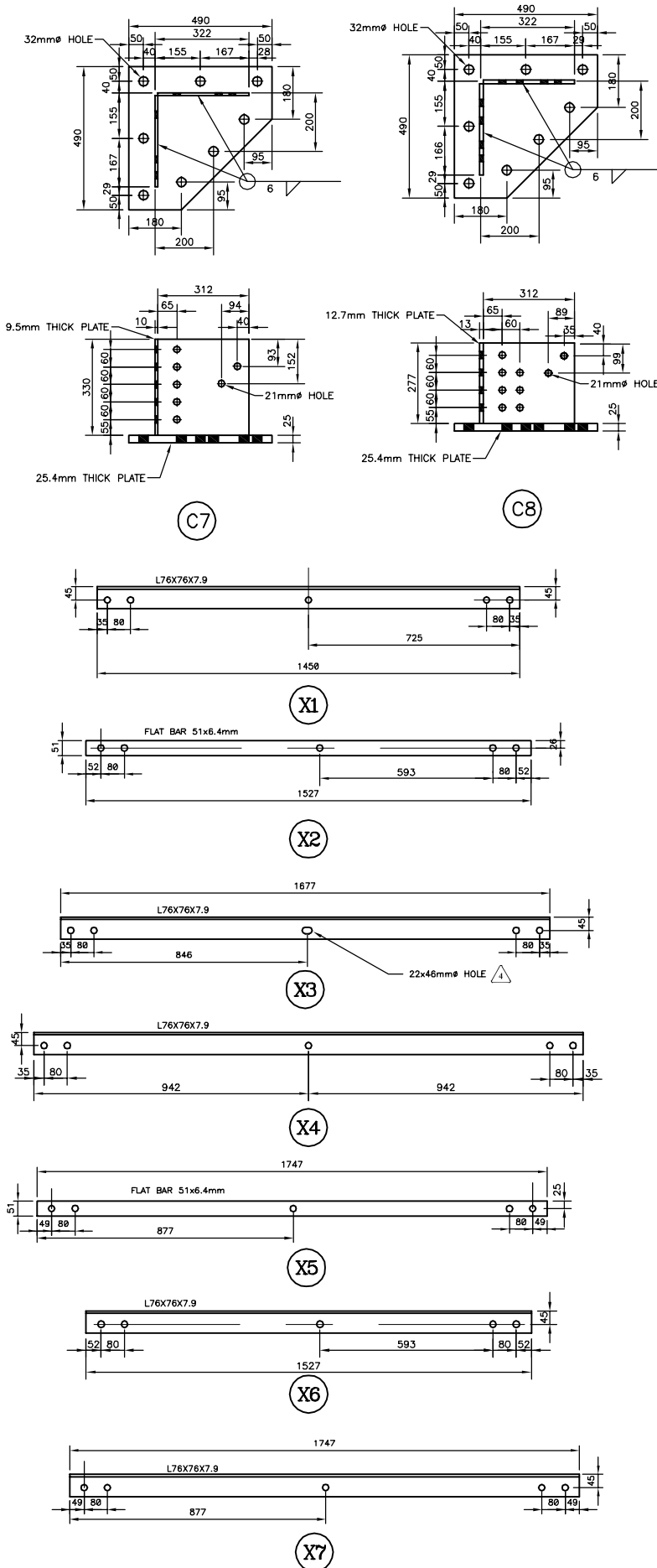
No. dessin:  
 Drawing no.:

Échelle:  
 Scale:

**INDICATED**

08733 21

Services techniques  
 Systèmes électroniques et informatiques  
 Informations techniques et graphiques  
 191 Bout Champlain (dépot 18)  
 Québec (Québec) G1K 7T7



NOTE: DIAMETER OF HOLES SHALL BE 21mm UNLESS OTHERWISE NOTED

3	X3, H8, H8A AND H13 DETAILS MODIFIED FOR CONSTRUCTION	L.T.S.	04-04-06
2	DEFINITIVE	P.-C.G.	04-01-08
1	DEFINITIVE	P.-C.G.	03-12-03

A	B	C
A: Numéro du détail / Detail no.		
B: Feuille sur laquelle le détail est tiré / Location drawing no.		
C: Feuille sur laquelle le détail est dessiné / Drawing no.		

Toute modification doit être rapportée à / All modification must be reported to:

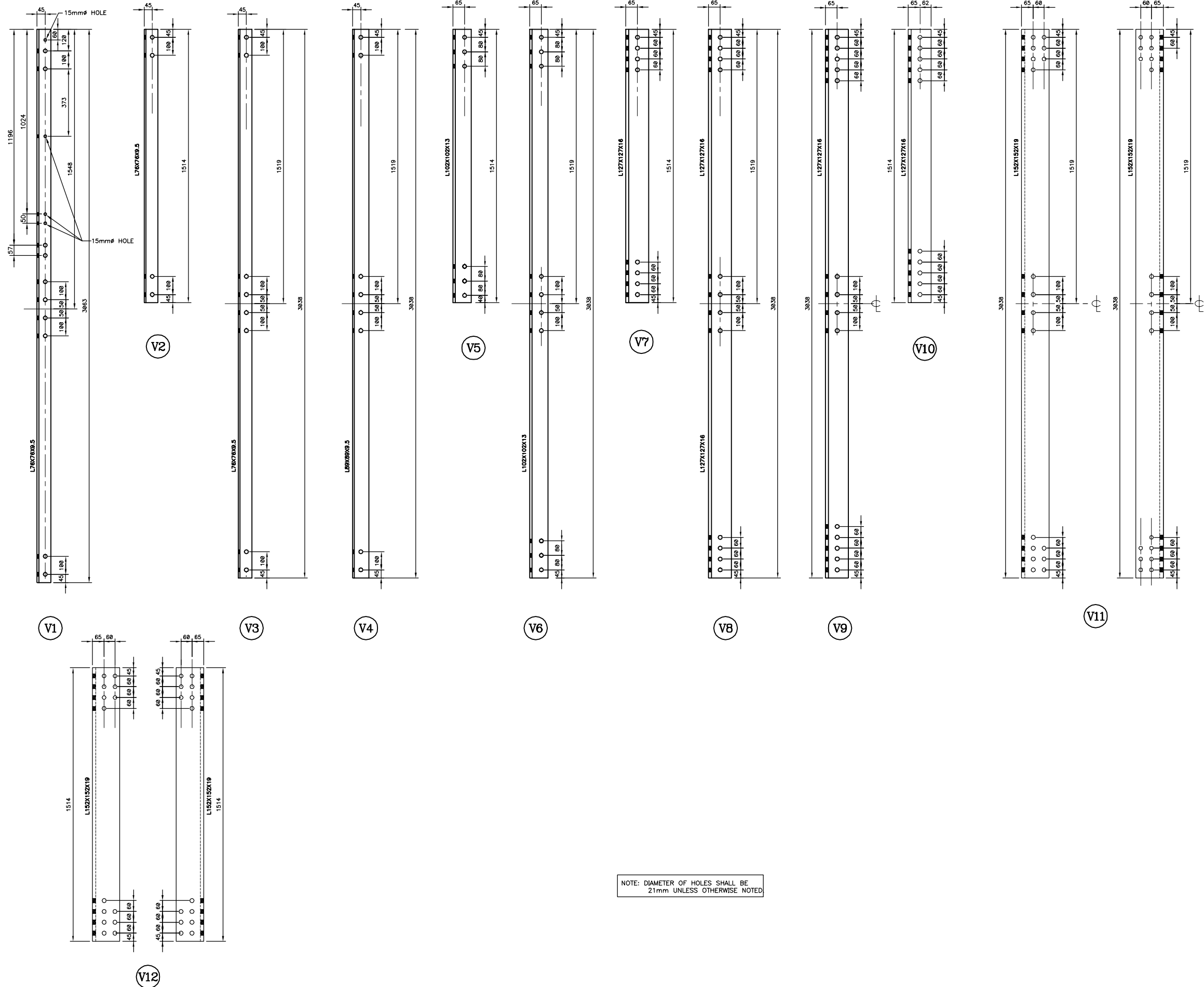
**GARDE CÔTIÈRE, RÉGION LAURENTIENNE**  
**SERVICES TECHNIQUES**  
 Systèmes électroniques et informatiques  
 Informations Techniques et Graphiques

Dossier: / File:  
**LATTICED STEEL TOWERS**  
 HEIGHT 3m (10ft) @ 24.4m (80ft)

Dessin: / Drawing:  
**VERTICAL, HORIZONTAL & DIAGONAL STRUCTURAL MEMBERS SHOP DRAWINGS**

Conçu par: / Designed by:	<b>P.-C. GAGNON, Ing.</b>	Date: / Date:	<b>2003/05/30</b>
Dessiné par: / Drawn by:	<b>ERIC GAGNON, tech.</b>	Date: / Date:	<b>2003/05/30</b>
Vérifié par: / Verified by:	<b>P.-C. GAGNON, Ing.</b>	Date: / Date:	<b>2003/05/30</b>

No. dossier: / File no.:	<b>08733</b>	Echelle: / Scale:	<b>INDICATED</b>
No. dessin: / Drawing no.:	<b>22</b>		



Services techniques  
Systèmes électroniques et informatiques  
Informations techniques et graphiques  
101 Boul. Champlain (dépot 18)  
Québec (Québec) G1K 7Y7

3	FOR CONSTRUCTION	P-C.G.	04-05-31
2	DEFINITIVE	P-C.G.	04-01-08
1	DEFINITIVE	P-C.G.	03-12-23

Révision	Description	Par/By	Date
A	A: Numéro du détail Detail no.		
B	B: Feuille sur laquelle le détail est référencé Location drawing no.		
C	C: Feuille sur laquelle le détail est dessiné Drawing no.		

Toute modification doit être rapportée à:  
All modification must be reported to:

GARDE CÔTIÈRE, RÉGION LAURENTIENNE  
SERVICES TECHNIQUES  
Systèmes électroniques et informatiques  
Informations Techniques et Graphiques

Dossier:  
File:

**LATTICED STEEL TOWERS**  
HEIGHT 3m (10ft) @ 24.4m (80ft)

Dessin:  
Drawing:

**VERTICAL STRUCTURAL MEMBERS  
SHOP DRAWINGS**

Conçu par:  
Designed by: **P.-C. GAGNON, Ing.** 2003/05/30

Dessiné par:  
Drawn by: **ERIC GAGNON, tech.** 2003/05/30

Vérifié par:  
Verified by: **P.-C. GAGNON, Ing.** 2003/05/30

Approuvé par:  
Approved by:

No. dossier:  
File no.:

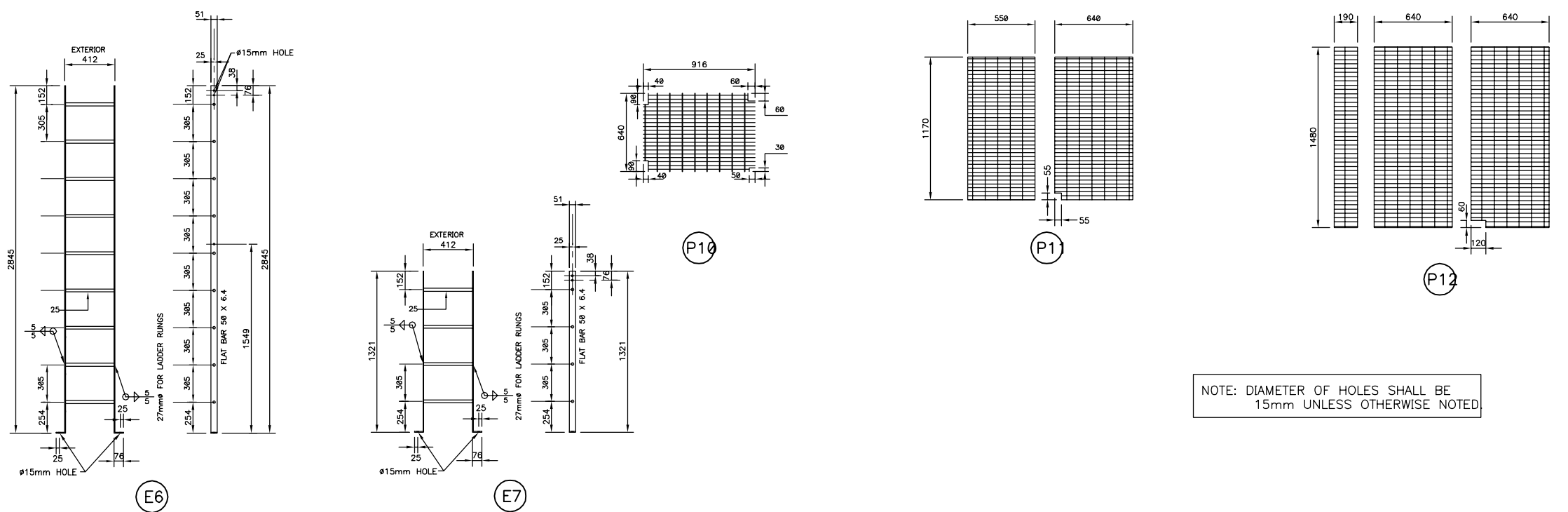
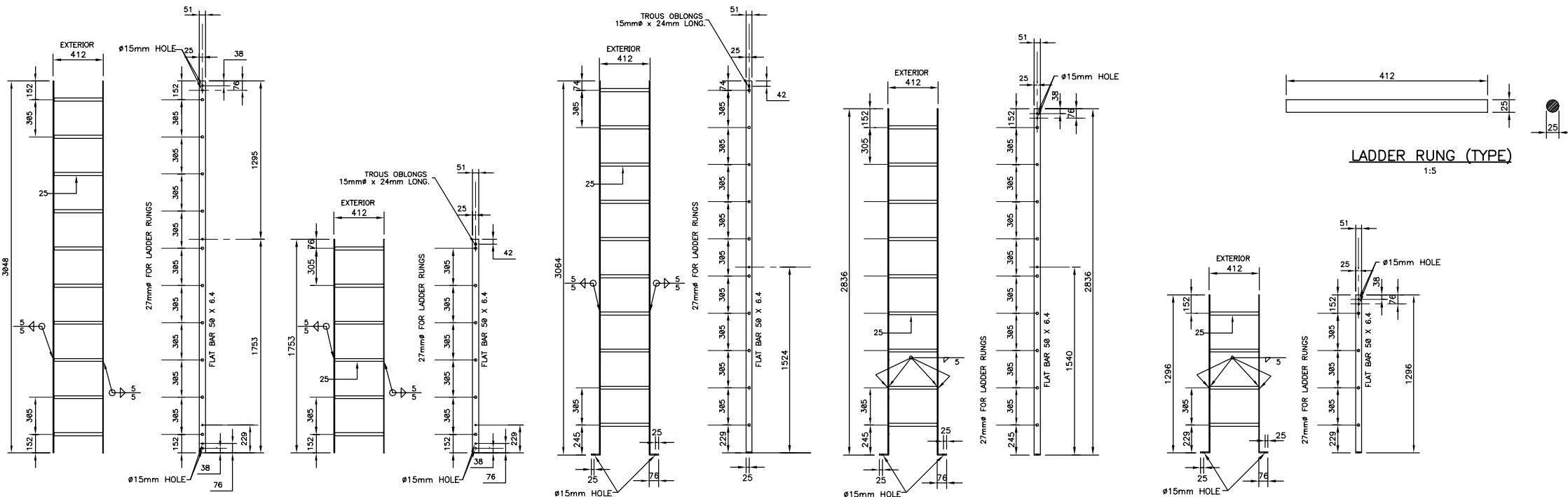
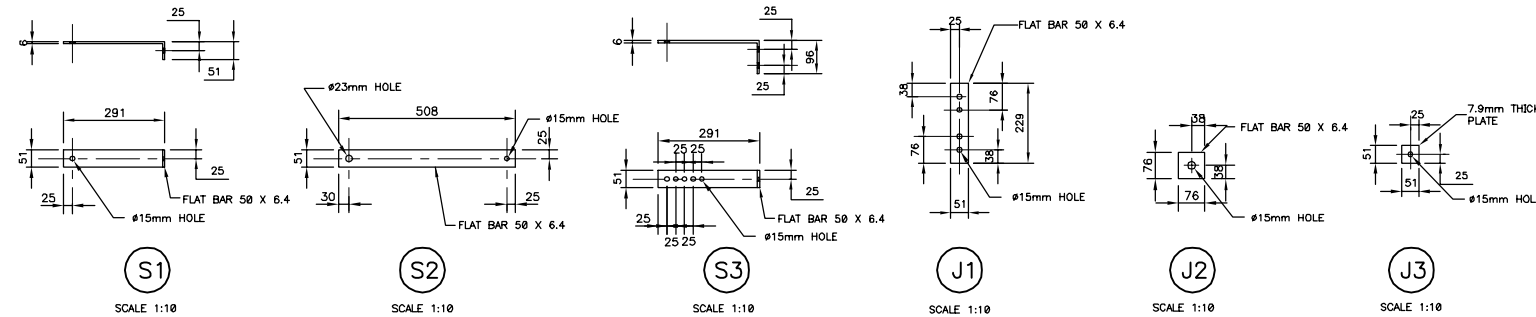
Échelle:  
Scale: **1 : 10**

No. dessin:  
Drawing no.:

80733



Services techniques  
Systèmes électroniques et informatiques  
Informations techniques et graphiques  
101 Blvd. Champlain (dépot 18)  
Québec (Québec) G1K 7Y7



NOTE: DIAMETER OF HOLES SHALL BE 15mm UNLESS OTHERWISE NOTED

3	FOR CONSTRUCTION	P-C.G.	04-05-31
2	DEFINITIVE	P-C.G.	04-01-08
1	DEFINITIVE	P-C.G.	03-12-83

Révision	Description	Par/By	Date
A	A: Numéro du détail Detail no.		
B	B: Feuille sur laquelle le détail est référencé Location drawing no.		
C	C: Feuille sur laquelle le détail est dessiné Drawing no.		

Toute modification doit être rapportée à:  
All modification must be reported to:  
GARDE CÔTIÈRE, RÉGION LAURENTIENNE  
SERVICES TECHNIQUES  
Systèmes électroniques et informatiques  
Informations Techniques et Graphiques

Dossier:  
File:  
**LATTICED STEEL TOWERS**  
HEIGHT 3m (10ft) @ 24.4m (80ft)

Dessin:  
Drawing:  
**LADDERS AND GRATING  
SHOP DRAWINGS**

Conçu par:  
Designed by: **P-C. GAGNON Ing. 2003-05-30**

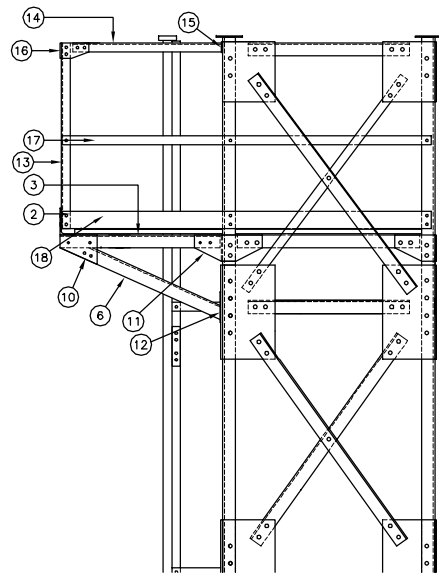
Dessiné par:  
Drawn by: **ERIC GAGNON tech. 2003-05-30**

Vérifié par:  
Verified by: **P-C. GAGNON Ing. 2003-05-30**

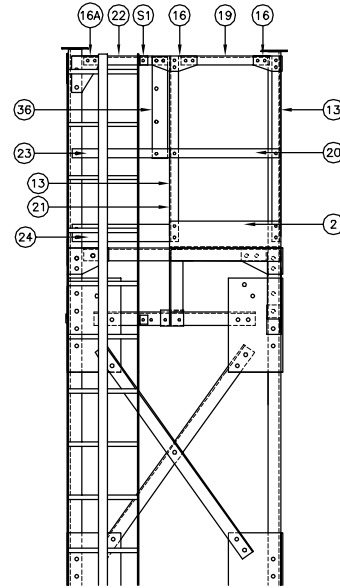
Approuvé par:  
Approved by:

No. dossier: File no.:	Échelle: Scale: <b>1 : 20</b>
No. dessin: Drawing no.:	No. feuille: Sheet no.:
08733	24

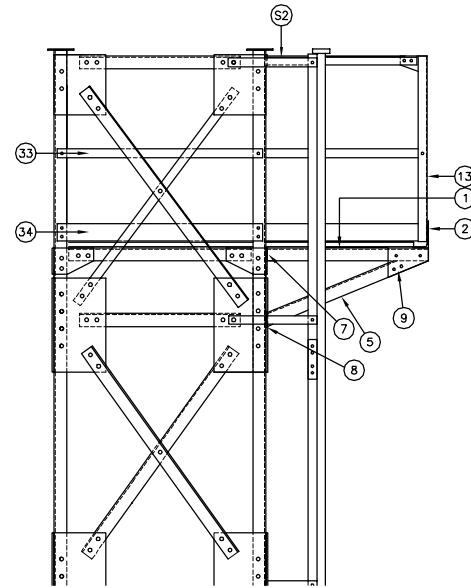
Services techniques  
 Systèmes électroniques et informatiques  
 Informations techniques et graphiques  
 101 Boul. Champlain (dépt 18)  
 Québec (Québec) G1K 7Y7



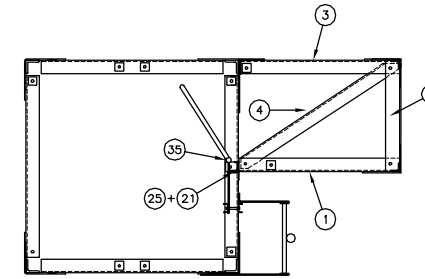
RIGHT ELEVATION  
 SCALE 1:20



FRONT ELEVATION  
 SCALE 1:20



LEFT ELEVATION  
 SCALE 1:20



PLAN VIEW  
 SCALE 1:20

UPPER DECK AND RAILING FOR 1219x1219 TOWERS  
 SCALE 1:20

MATERIAL LIST					
CODE	DESCRIPTION	GRADE	REFERENCE DRAWING	QUANTITY	WEIGHT (kg)
1	L 76 X 76 X 7.9 X 928 lg	350 MPa	08733-26	1	8.4
2	L 152 X 102 X 7.9 X 640 lg	350 MPa	08733-26	1	9.8
3	L 76 X 76 X 7.9 X 918 lg	350 MPa	08733-26	1	8.3
4	L 76 X 76 X 7.9 X 1099 lg	350 MPa	08733-26	1	9.1
5	L 76 X 76 X 7.9 X 1002 lg	350 MPa	08733-26	1	9.0
6	L 76 X 76 X 7.9 X 1007 lg	350 MPa	08733-26	1	9.0
7	PL 130 X 80 X 6.4	350 MPa	08733-26	1	0.5
8	PL 131 X 95 X 6.4	350 MPa	08733-26	1	0.6
9	PL 234 X 170 X 6.4	350 MPa	08733-26	1	1.4
10	PL 212 X 170 X 6.4	350 MPa	08733-26	1	1.3
11	PL 389 X 150 X 6.4	350 MPa	08733-26	1	2.4
12	PL 177 X 88 X 6.4	350 MPa	08733-26	1	0.8
13	L 51 X 51 X 6.4 X 1069 lg	350 MPa	08733-21	2	10.1
14	L 51 X 51 X 6.4 X 852 lg	350 MPa	08733-26	1	4.0
15	PL 76 X 61 X 6.4	350 MPa	08733-26	1	0.2
16	PL 155 X 90 X 6.4	350 MPa	08733-26	4	2.8
16A	PL 155 X 90 X 6.4	350 MPa	08733-26	1	1.3
17	PL 212 X 51 X 6.4	350 MPa	08733-26	1	5.4
18	PL 212 X 100 X 6.4	350 MPa	08733-26	1	10.7
19	L 51 X 51 X 6.4 X 504 lg	350 MPa	08733-26	1	2.4
20	PL 51 X 634 X 6.4	350 MPa	08733-24	1	1.6
21	L 51 X 51 X 6.4 X 1095 lg	350 MPa	08733-24	1	5.2
22	L 51 X 51 X 6.4 X 484 lg	350 MPa	08733-24	1	2.3
23	PL 51 X 612 X 6.4	350 MPa	08733-24	1	1.8
24	PL 100 X 612 X 6.4	350 MPa	08733-24	1	3.1
25	PL 56 X 73 X 6.4	350 MPa	08733-24	1	0.2
26	PL 100 X 917 X 6.4	350 MPa	08733-24	1	4.6
27	PL 51 X 917 X 6.4	350 MPa	08733-24	1	2.3
28	L 51 X 51 X 6.4 X 787 lg	350 MPa	08733-24	1	3.9
29	PL 100 X 2427 X 6.4	350 MPa	08733-24	1	12.2
30	PL 51 X 2427 X 6.4	350 MPa	08733-24	1	6.2
31	PL 51 X 1484 X 6.4	350 MPa	08733-24	2	7.6
32	PL 100 X 1484 X 6.4	350 MPa	08733-24	2	15
33	PL 51 X 1179 X 6.4	350 MPa	08733-24	2	6.0
34	PL 100 X 1179 X 6.4	350 MPa	08733-24	2	11.8
35	"CUTTERMAN CO. SELF-CLOSING GATE" MODEL #AG1626Z	-	-	1	-
36	PL 88 X 585 X 9.5	350 MPa	08733-24	1	3.9
TOTAL				1219 x 1219 TOWERS (G1)	133.2
				1519 X 1519 TOWERS (G2)	155.1
BLB	Ø13mm X 38mm BOLT WITH NUT AND LOCK WASHER	ASTM-A325	S/O	66	S/O

3	FOR CONSTRUCTION	P-C.G. 04-05-31
2	DEFINITIVE	P-C.G. 04-01-08
1	DEFINITIVE	P-C.G. 03-12-23

Révision	Description	Par/By	Date
A	A: Numéro du détail		
B	B: Feuille sur laquelle le détail est référencé		
C	C: Feuille sur laquelle le détail est dessiné		

Toute modification doit être rapportée à:  
 All modification must be reported to:

GARDE CÔTIÈRE, RÉGION LAURENTIENNE  
 SERVICES TECHNIQUES  
 Systèmes électroniques et informatiques  
 Informations Techniques et Graphiques

Dossier:  
 File:  
**LATTICED STEEL TOWERS**  
 HEIGHT 3m (10ft) @ 24.4m (80ft)

Dessin:  
 Drawing:  
**UPPER DECK AND RAILING**  
**ERECTING PLAN**

Conçu par:  
 Designed by:  
**P-C.GAGNON, Ing. 2003/05/30**

Dessiné par:  
 Drawn by:  
**ERIC GAGNON, tech. 2003/05/30**

Vérifié par:  
 Verified by:  
**P-C.GAGNON, Ing. 2003/05/30**

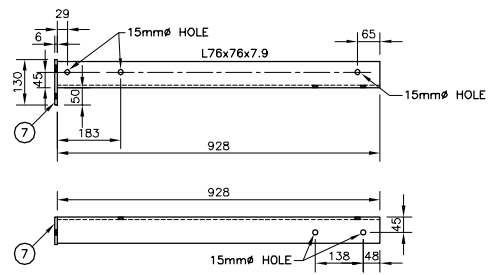
Approuvé par:  
 Approved by:

No. dossier:  
 File no.:

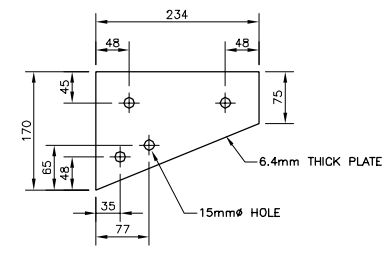
No. feuille:  
 Sheet no.:

88733  
 25

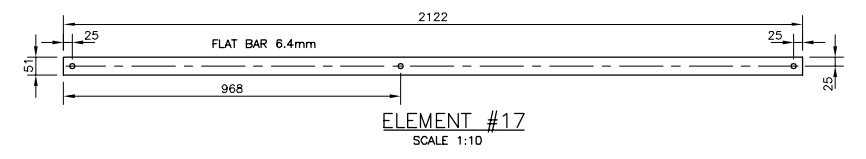
Services techniques  
Systèmes électroniques et informatiques  
Informations techniques et graphiques  
101 Boul. Champlain (dépt 18)  
Québec (Québec) G1K 7Y7



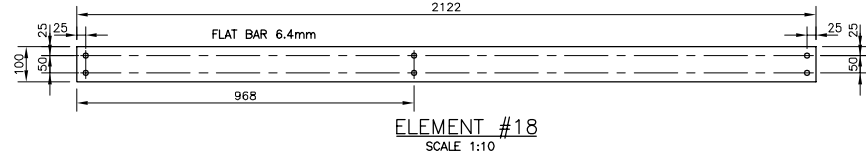
ELEMENT #1  
SCALE 1:10



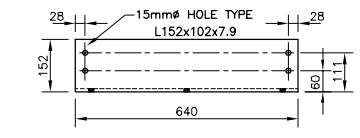
ELEMENT #9  
SCALE 1:5



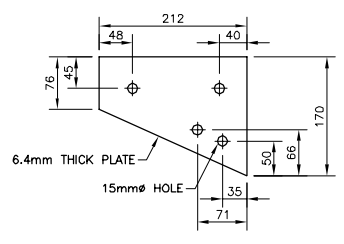
ELEMENT #17  
SCALE 1:10



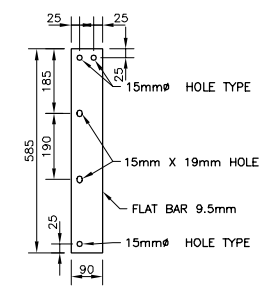
ELEMENT #18  
SCALE 1:10



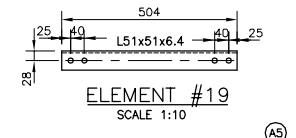
ELEMENT #2  
SCALE 1:10



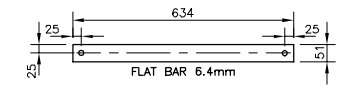
ELEMENT #10  
SCALE 1:5



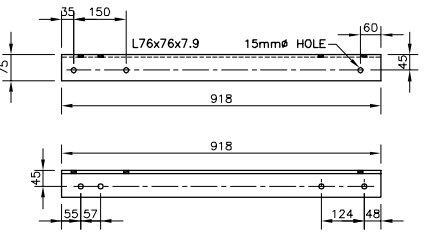
ELEMENT #36  
SCALE 1:10



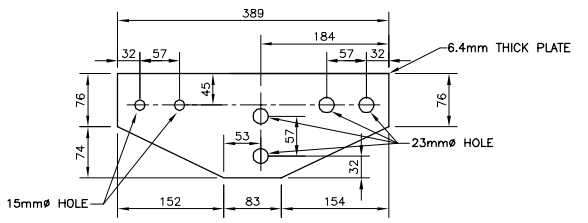
ELEMENT #19  
SCALE 1:10



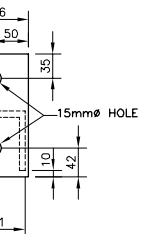
ELEMENT #20  
SCALE 1:10



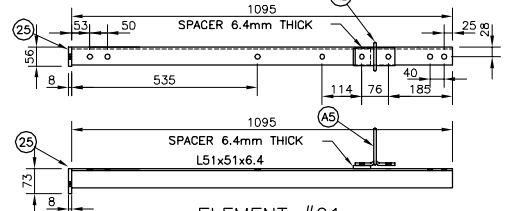
ELEMENT #3  
SCALE 1:10



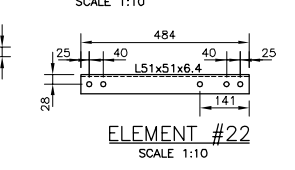
ELEMENT #11  
SCALE 1:5



ELEMENT #12  
SCALE 1:5

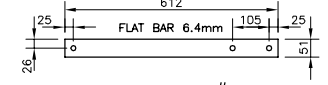


ELEMENT #21  
SCALE 1:10

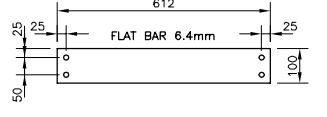


ELEMENT #22  
SCALE 1:10

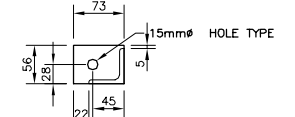
NOTE: DIAMETER OF HOLES SHALL BE 15mm UNLESS OTHERWISE NOTED



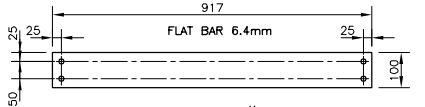
ELEMENT #23  
SCALE 1:10



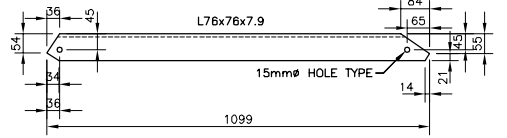
ELEMENT #24  
SCALE 1:10



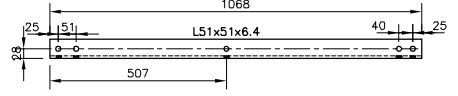
ELEMENT #25  
SCALE 1:5



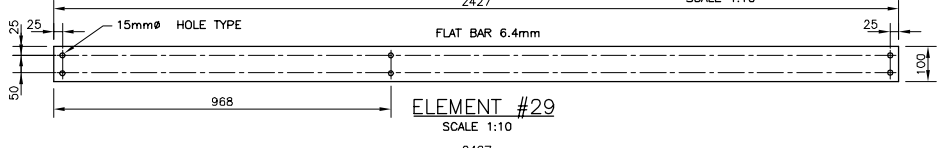
ELEMENT #26  
SCALE 1:10



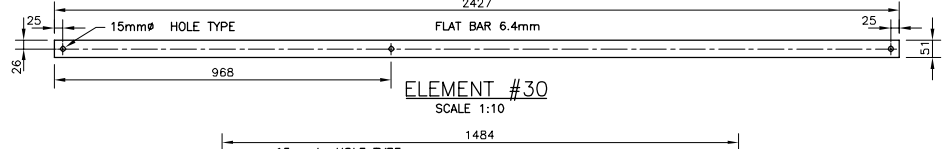
ELEMENT #4  
SCALE 1:10



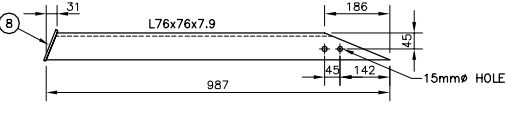
ELEMENT #13  
SCALE 1:10



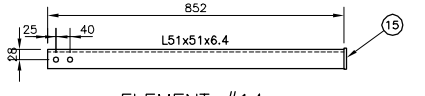
ELEMENT #29  
SCALE 1:10



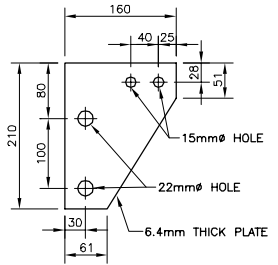
ELEMENT #30  
SCALE 1:10



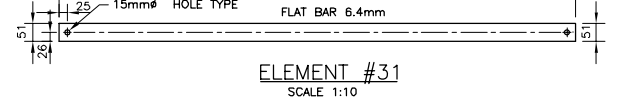
ELEMENT #5  
SCALE 1:10



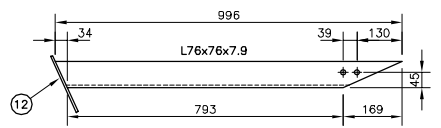
ELEMENT #14  
SCALE 1:10



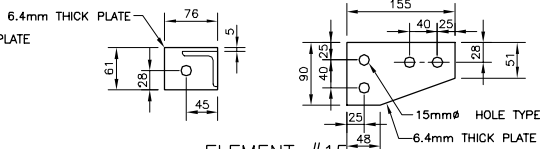
ELEMENT #16-A  
SCALE 1:10



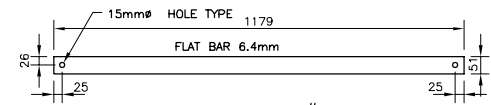
ELEMENT #31  
SCALE 1:10



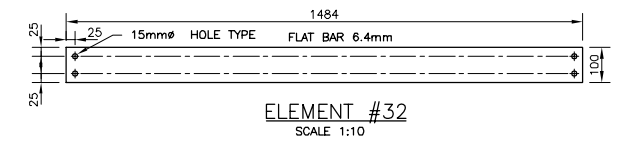
ELEMENT #6  
SCALE 1:10



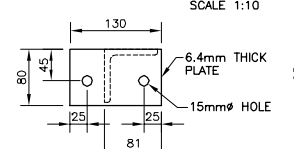
ELEMENT #15  
SCALE 1:5



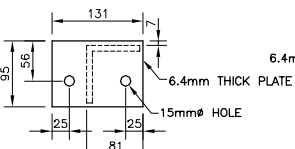
ELEMENT #16  
SCALE 1:5



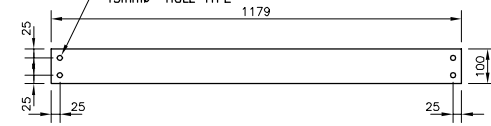
ELEMENT #32  
SCALE 1:10



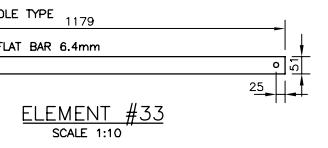
ELEMENT #7  
SCALE 1:5



ELEMENT #8  
SCALE 1:5



ELEMENT #34  
SCALE 1:10



ELEMENT #33  
SCALE 1:10

3	FOR CONSTRUCTION	P-C.G.	04-05-31
2	DEFINITIVE	P-C.G.	04-01-08
1	DEFINITIVE	P-C.G.	03-12-23

Révision	Description	Par/By	Date
A	Numéro du détail		
B	Feuille sur laquelle le détail est référencé		
C	Location drawing no.		

Toute modification doit être rapportée à:  
All modification must be reported to:

GARDE CÔTIÈRE, RÉGION LAURENTIENNE  
SERVICES TECHNIQUES  
Systèmes électroniques et informatiques  
Informations Techniques et Graphiques

Dossier:  
File:

LATTICED STEEL TOWERS  
HEIGHT 3m (10ft) @ 24.4m (80ft)

Dessin:  
Drawing:

UPPER DECK PARTS  
SHOP DRAWINGS

Conçu par:  
Designed by:

P-C.GAGNON, Ing. 2003/05/30

Dessiné par:  
Drawn by:

ERIC GAGNON, ISCALE.2003/05/30

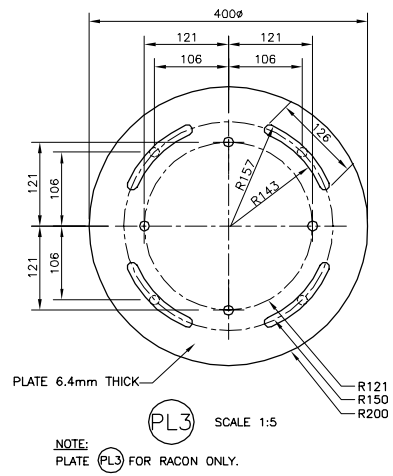
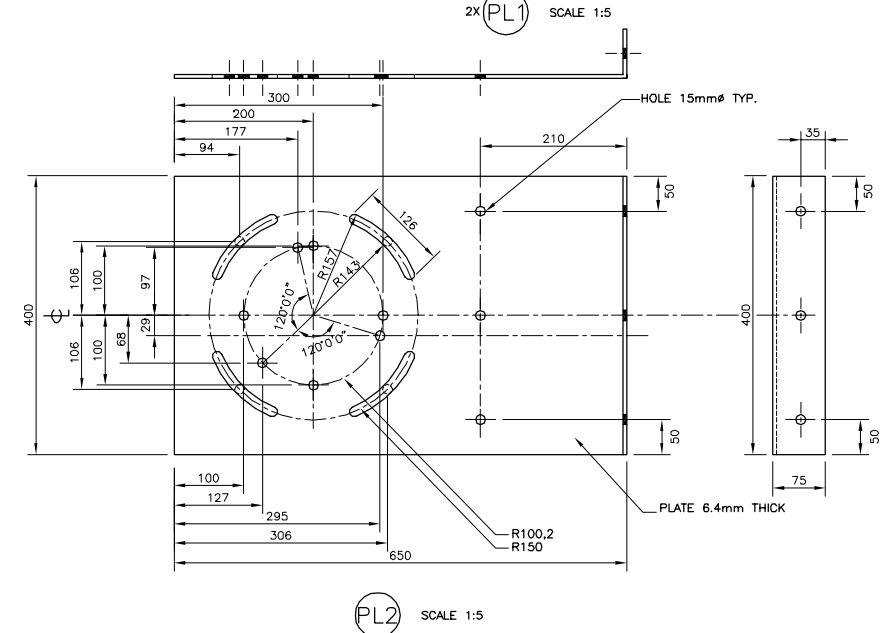
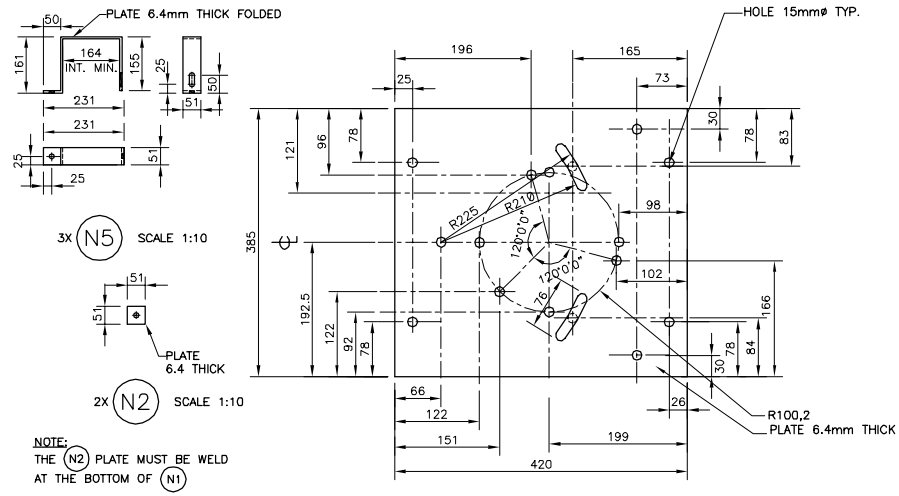
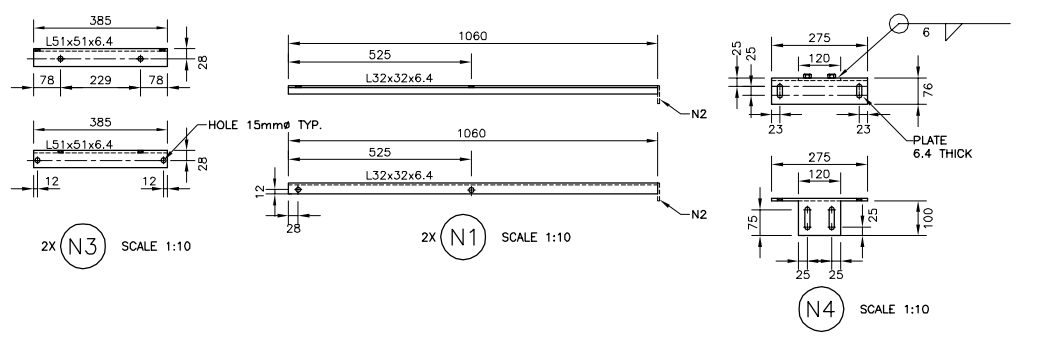
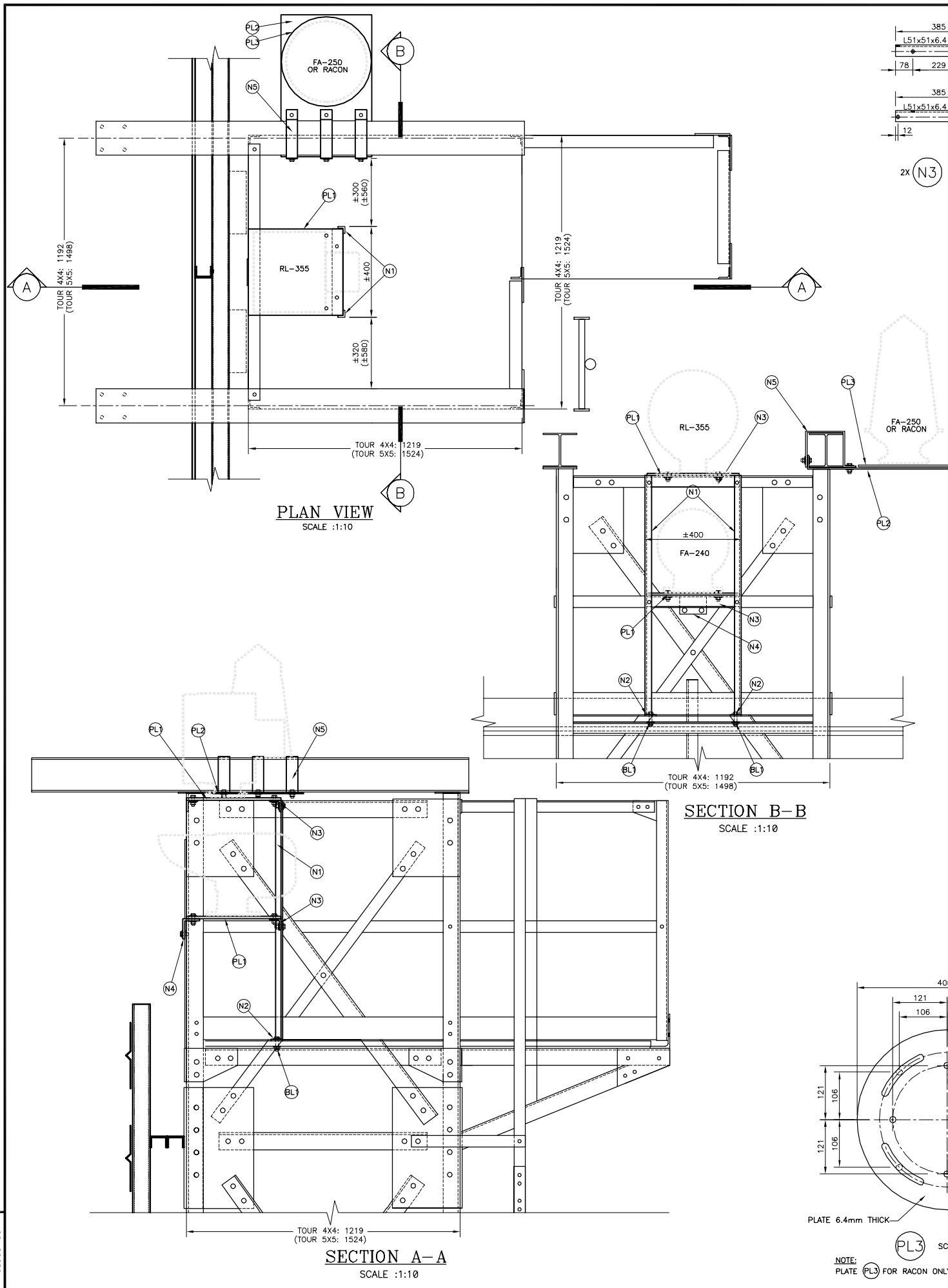
Vérifié par:  
Verified by:

P-C.GAGNON, Ing. 2003/05/30

Approuvé par:  
Approved by:

No. dossier: File no.:	Échelle: Scale:
No. dessin: Drawing no.:	INDICATED
	88733
	28





SECTION B-B  
SCALE :1:10

PLAN VIEW  
SCALE :1:10

SECTION A-A  
SCALE :1:10

MATERIAL LIST				
CODE	DESCRIPTION	GRADE	REFERENCE DRAWING	QUANTITY
N1	L 32 X 32 X 6.4 X 1060	350 MPa	08733-35	2
N2	PL 51 X 51 X 6.4	350 MPa	08733-35	2
N3	L 51 X 51 X 6.4 X 385	350 MPa	08733-35	2
N4	PL 120 X 199 X 6.4 / PL 275 X 78 X 6.4	350 MPa	08733-35	1
N5	PL 51 X 540 X 6.4	350 MPa	08733-35	3
PL1	PL 420 X 385 X 6.4	350 MPa	08733-35	2
PL2	PL 650 X 400 X 6.4	350 MPa	08733-35	1
PL3	PL 400 X 400 X 6.4	350 MPa	08733-35	1
BOLTS, NUTS AND WASHERS				
BL1	Ø13mm X 52mm BOLT WITH NUT AND LOCK WASHER	ASTM-A325	S/O	2
BL2	Ø13mm X 38mm BOLT WITH NUT AND LOCK WASHER	ASTM-A325	S/O	24

NOTES:  
 - ALL STEEL AND BOLTS SHALL BE HOT GALVANIZED ACCORDING TO CAN/CSA-6164 (MINIMUM APPLICATION RATE = 600g/m<sup>2</sup>)  
 - BOLT HOLE DIAMETER SHALL BE 2mm GREATER THAN BOLT DIAMETER UNLESS OTHERWISE NOTED.  
 - BOLTS TO FIX LIGHTS ON PLATES ARE NOT COUNTED

2	FABRICATION	D.L.	05-04-27
1	PRELIMINAIRE	L.T.G.	05-03-29
Révision	Description	Par/By	Date

A: Numéro du détail  
 B: Feuille sur laquelle le détail est référencé  
 C: Feuille sur laquelle le détail est dessiné

Toute modification doit être rapportée à:  
 All modification must be reported to:  
 GARDE CÔTIÈRE, RÉGION LAURENTIENNE  
 SERVICES TECHNIQUES  
 Systèmes électroniques et informatiques  
 Informations Techniques et Graphiques

Dossier:  
 File:  
**LATTICED STEEL TOWERS**  
 HEIGHT 3m (10ft) @ 24.4m (80ft)

Dessiné par:  
 Drawn by:  
**L.T.G.**  
 Date:  
 2005/03/14

Conçu par:  
 Designed by:  
**COAST GUARD, QBC**  
 Date:  
 2005/03/14

Vérifié par:  
 Verified by:  
**R.M. D.L. B.G.**  
 Date:  
 2005/03/29

Approuvé par:  
 Approved by:  
**DANIEL LEFEBVRE, Ing.**  
 Date:  
 2005/04/27

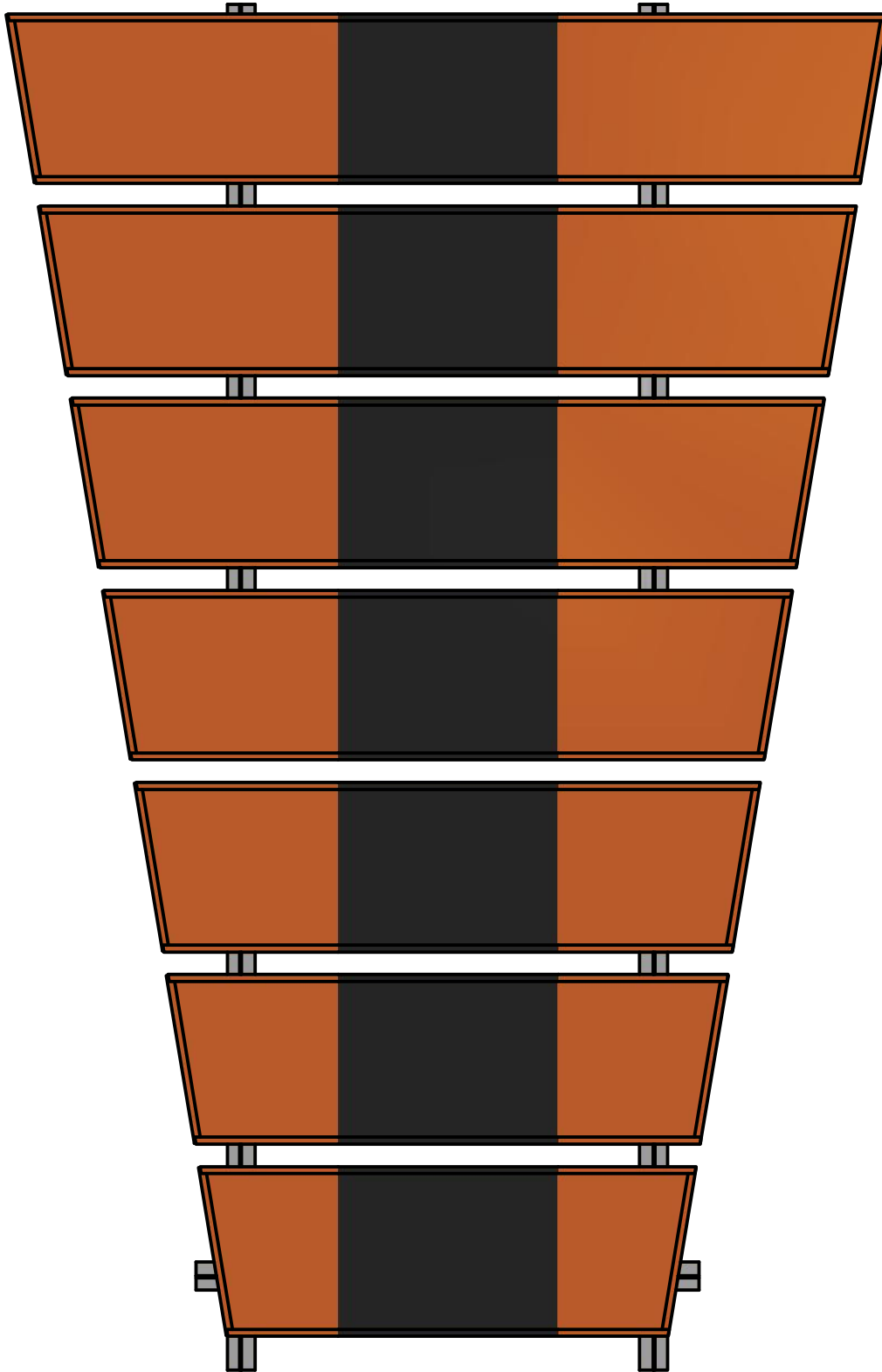
No. dossier:  
 File no.:  
**08733**  
 No. feuille:  
 Sheet no.:  
**35**

4

3

2

1



B

B

A


A

PARTS LIST

ITEM	QTY	PART NUMBER	DESCRIPTION	DRAWING
1	112 ft	P1-P14	12" SIGNATURE ALUMINUM PANEL	3
2	142 ft	P15-P28, P31 & P32	3 1/2" 30ga STEEL ROOFING SHEET - ORANGE	4-5
3	37 ft	P29 & P30	3 1/2" 30ga STEEL ROOFING SHEET - BLACK	4
5	56 ft	P33-P39	24" 30ga STEEL ROOFING SHEET - ORANGE	6
6	19 ft	P40	24" 30ga STEEL ROOFING SHEET - BLACK	6
7	2	P41	BACK TO BACK 9' X 2" X 2" X 1/4" ALUMINUM ANGLES	7
8	2	P42	BACK TO BACK 7' X 2" X 2" X 1/4" ALUMINUM ANGLES	7
9	4	P43	BACK TO BACK 6' X 2" X 2" X 1/4" ALUMINUM ANGLES	7

NOTES:

SIGNATURE ALUMINUM PANELS REFER TO CUSTOM MADE 12" ALUMINUM PANELS FROM SIGNATURE ALUMINUM IN PICKERING, ON  
 ALL 3/8" x 1 1/4" CAP SCREWS TO BE STAINLESS STEEL OR CADMIUM COATED  
 UNSPECIFIED SCREWS REFER TO 10-16 X 3/4" SELF TAPPING HEAD HEX SCREWS  
 FRONT DAYMARKS ARE CONSTRUCTED THE EXACT SAME, BUT THEY SHALL BE INSTALLED INVERSE TO WHAT IS SHOWN IN THESE PLANS  
 MOUNTING TO TOWER WILL BE SITE SPECIFIC  
 DAYMARK TO BE ASSEMBLED IN TWO SEPARATE PARTS FOR EASIER TRANSPORTATION AND/OR INSTALLATION

 Fisheries and Oceans Canada		Pêches et Océans Canada		
Canadian Coast Guard Central & Arctic Region		Garde côtière canadienne Région du centre et de l'Arctique		
Maritime and Civil Infrastructure (MCI), Integrated Technical Services 520 Exmouth St., Sarnia, ON N7T 8B1				
<b>4800 MM REAR DAYMARK</b> <b>PARTS LIST AND STRUCTURAL NOTES</b>				
FILE No.	SCALE: N.T.S.	DWG No.	0	
Rv.	DATE	DESCRIPTION	DRAWN	APP'D
0	14 JAN 13	DRAWING INITIATED	E.J.G.	R.C.S.

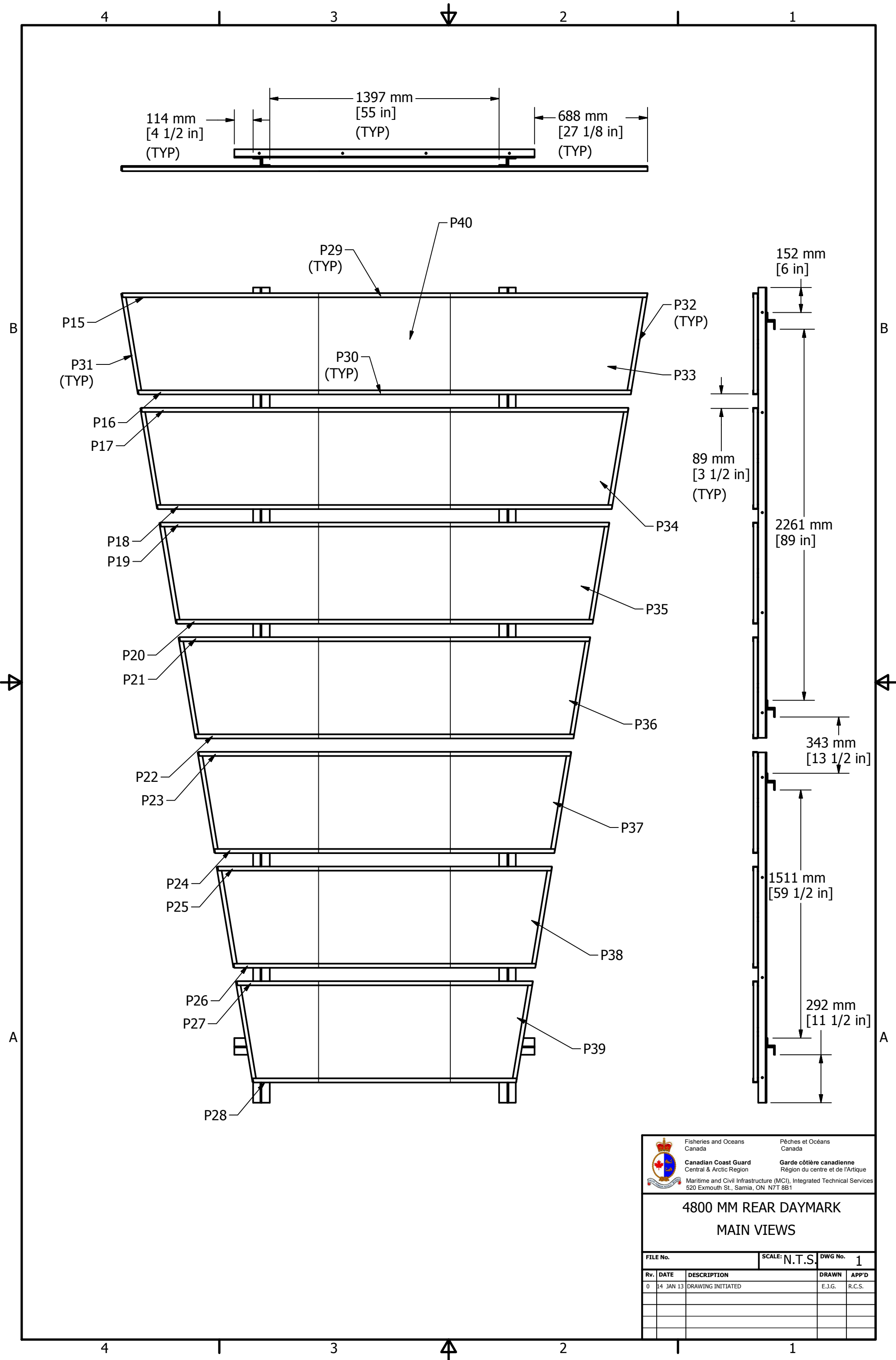
4


3

2

1

4



 Fisheries and Oceans Canada		Pêches et Océans Canada	
Canadian Coast Guard Central & Arctic Region		Garde côtière canadienne Région du centre et de l'Arctique	
Maritime and Civil Infrastructure (MCI), Integrated Technical Services 520 Exmouth St., Sarnia, ON N7T 8B1			
<b>4800 MM REAR DAYMARK</b> <b>MAIN VIEWS</b>			
FILE No.	SCALE: N.T.S.	DWG No.	1
Rv.	DATE	DESCRIPTION	DRAWN APP'D
0	14 JAN 13	DRAWING INITIATED	E.J.G. R.C.S.

4

3

2

1

3/8" x 1 1/4" CAP SCREWS  
CONNECTING P24 TO  
ALUM SHEETS (TYP)

3/8" x 1 1/4" CAP SCREWS  
CONNECTING P33 TO P31/P32  
(TYP)

P41

51 mm  
[2 in]

279 mm  
[11 in]  
(TYP)

305 mm  
[12 in]  
(TYP)

P1

P43 (TYP)

P2

P3

25 mm  
[1 in]  
(TYP)

114 mm  
[4 1/2 in]  
(TYP)

P4

P5

P6

P7

P8

P9

P42

P10

P11

P12

P13

140 mm  
[5 1/2 in]

140 mm  
[5 1/2 in]

P14

1549 mm  
[61 in]

140 mm  
[5 1/2 in]

B

B

A


A

4

3

2

1

	Fisheries and Oceans Canada	Pêches et Océans Canada
	Canadian Coast Guard Central & Arctic Region	Garde côtière canadienne Région du centre et de l'Arctique
Maritime and Civil Infrastructure (MCI), Integrated Technical Services 520 Exmouth St., Sarnia, ON N7T 8B1		

**4800 MM REAR DAYMARK  
REAR ASSEMBLY INSTRUCTIONS**

FILE No.	SCALE: N.T.S.	DWG No. 2		
Rv.	DATE	DESCRIPTION	DRAWN	APP'D
0	14 JAN 13	DRAWING INITIATED	E.J.G.	R.C.S.