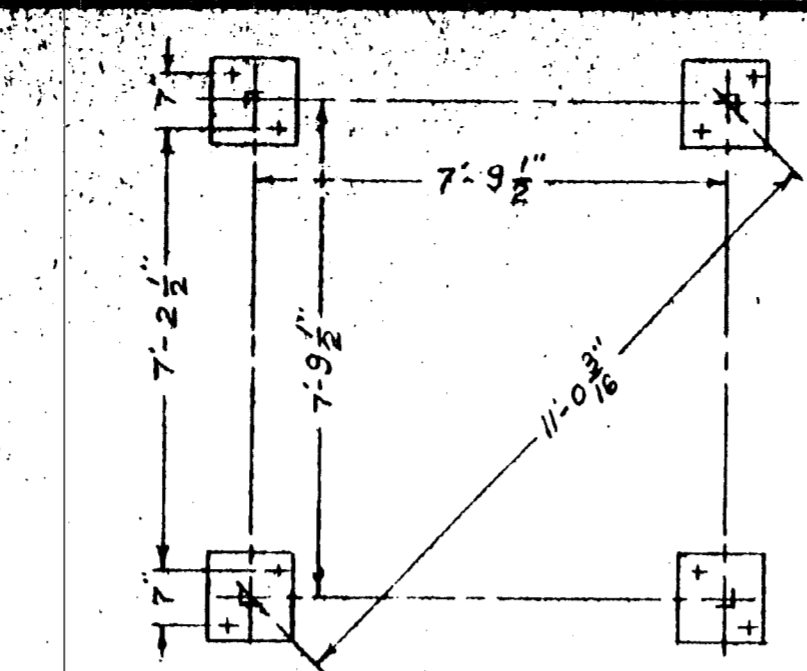
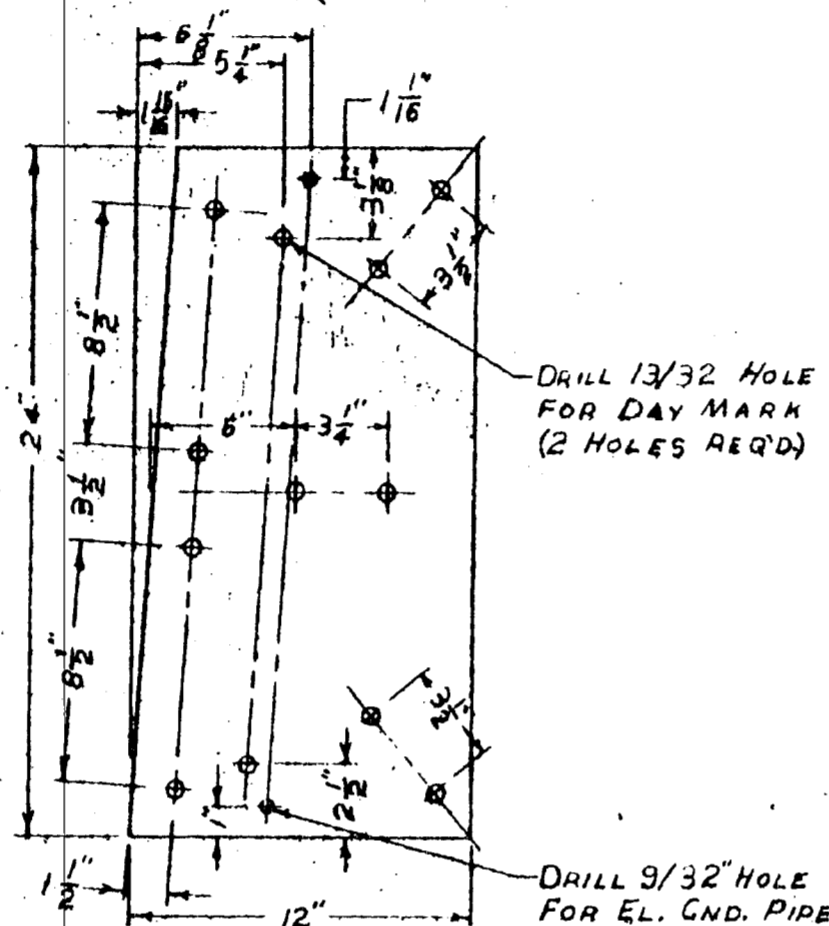


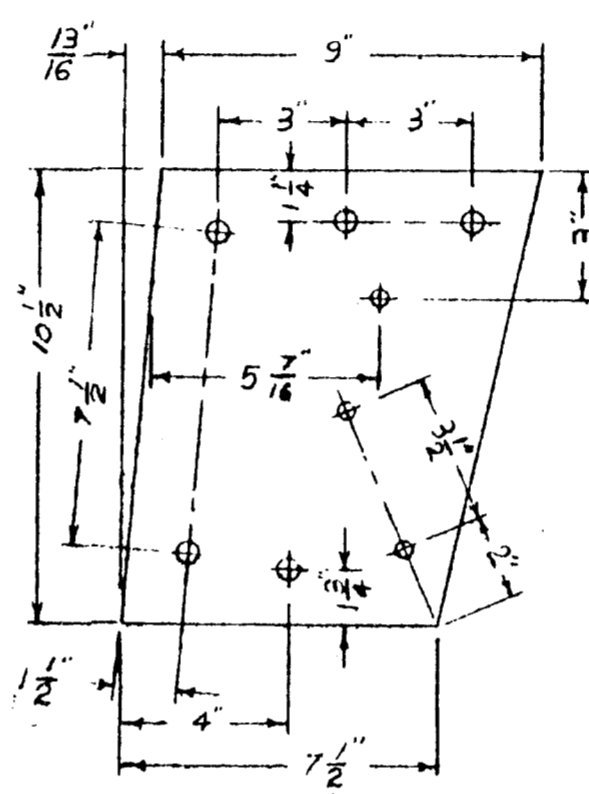
ELEVATION  
LADDER SIDE SHOWN  
SCALE: 1/4" = 1'-0"



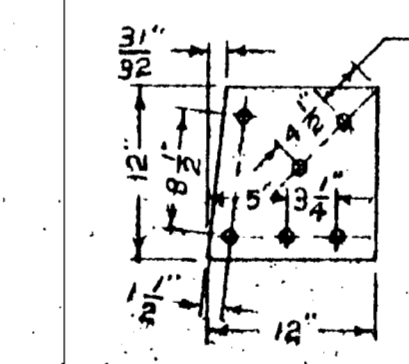
LANTERN TABLE  
SCALE: 1/4" = 1'-0"



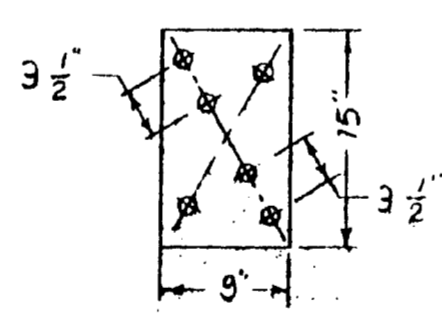
GUSSET B  
SCALE 2" = 1'-0"



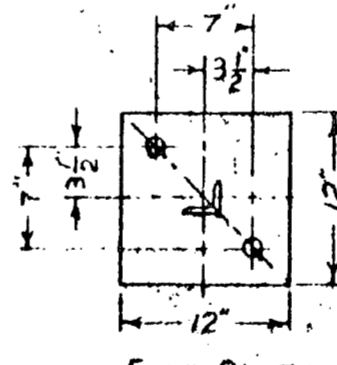
GUSSET A  
SCALE 3" = 1'-0"



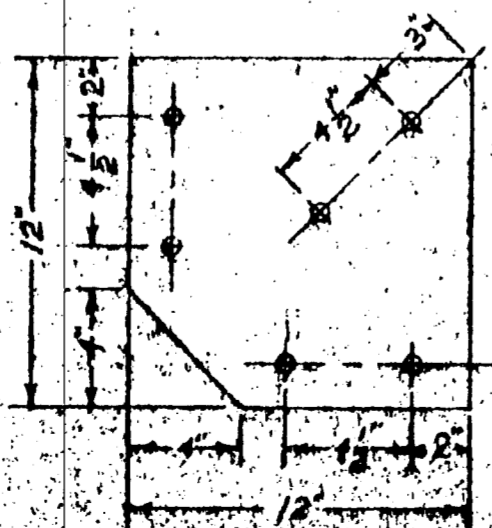
GUSSET D  
SCALE: 1" = 1'-0"



GUSSET F  
SCALE 1" = 1'-0"



FOOT PLATE  
SCALE: 1 1/2" = 1'-0"



GUSSET G FOR HORIZ  
MEMBERS 2" DIA.

- NOTES: 1. ALL L'S. 2" & OVER EXCEPT 40-C-1 SHALL BE BOLTED WITH 3/4" DIA. GALV'D. BOLTS. UNDER 2" WITH 1/2" GALV'D. BOLTS.  
2. BEAMS ON ONE SIDE OF TOWER TO BE DRILLED OR PUNCHED FOR LADDER 2 - 13/16 HOLES 16" ON CTRS.  
3. TEMPLATES TO BE USED FOR ALL HOLES SO THAT ALL MEMBERS ARE INTERCHANGEABLE AT EACH LEVEL.  
4. ALL MEMBERS SHALL BE MARKED AS SHOWN WITH TOWER HEIGHT AS PREFIX I.E. 40-X-1, 40-X-2 ETC., NUMBERS TO BE 1" MIN HEIGHT AND DONE WITH A SUITABLE WELDING BRAG.  
5. HORIZ. CROSS BRACES TO BE MARKED -THX AND -BHX.  
6. ALL WEIGHTS & DIM. GIVEN IN TABLE "MATERIAL LIST" ARE APPROXIMATE AND DOES NOT ALLOW FOR WASTE.  
7. FOR FOUNDATION, SEE DAWG. PF-4101-TS  
8. BOLT MAT'L. LIST INCLUDES BOLTS FOR WORKING PLATFORM, LADDER AND DAYMARK INSTALLATION.

MATERIAL LIST				
MARK	QTY.	MATERIAL	FEET	WT. LB.
40-A	8	1/4" M.S.R.		80
40-C-1	4	2"X2"X1/4" M.S.L	6'-4"	20
40-X-1A	8	1 1/2"X1 1/2"X1/4" M.S.L	17'-0"	40
40-X-1	4	1 1/2"X1 1/2"X1/4" M.S.L	19'-0"	45
40-F	4	1/4" M.S.R.		40
40-B	32	1/4" M.S.L		640
40-C-2	4	2"X2"X1/4" M.S.L	9'-4"	30
40-X-2	8	2"X2"X1/4" M.S.L	53'-4"	170
40-C-3	4	2"X2"X1/4" M.S.L	13'-0"	42
40-X-3	8	2"X2"X1/4" M.S.L	67'-4"	214
40-L-1	4	2 1/2"X2 1/2"X1/4" M.S.L	80'-0"	328
40-C-4	4	2"X2"X1/4" M.S.L	18'-0"	57
40-X-4	8	2 1/2"X2 1/2"X1/4" M.S.L	81'-4"	334
40-L-2	4	3"X3"X1/4" M.S.L	80'-0"	392
40-HX	2	2 1/2"X2 1/2"X1/4" M.S.L	17'-0"	68
40-G	4	1/4" M.S.R.		44
40-C-5	4	2"X2"X1/4" M.S.L	24'-0"	77
40-X-5	8	2 1/2"X2 1/2"X1/4" M.S.L	84'-0"	344
40-C-6	4	2"X2"X1/4" M.S.R	28'-0"	88
40-D	8	1/4" M.S.R		80
40-FP	4	3/8" M.S.R		62
40-L.T.	1	3/8" M.S.R		62

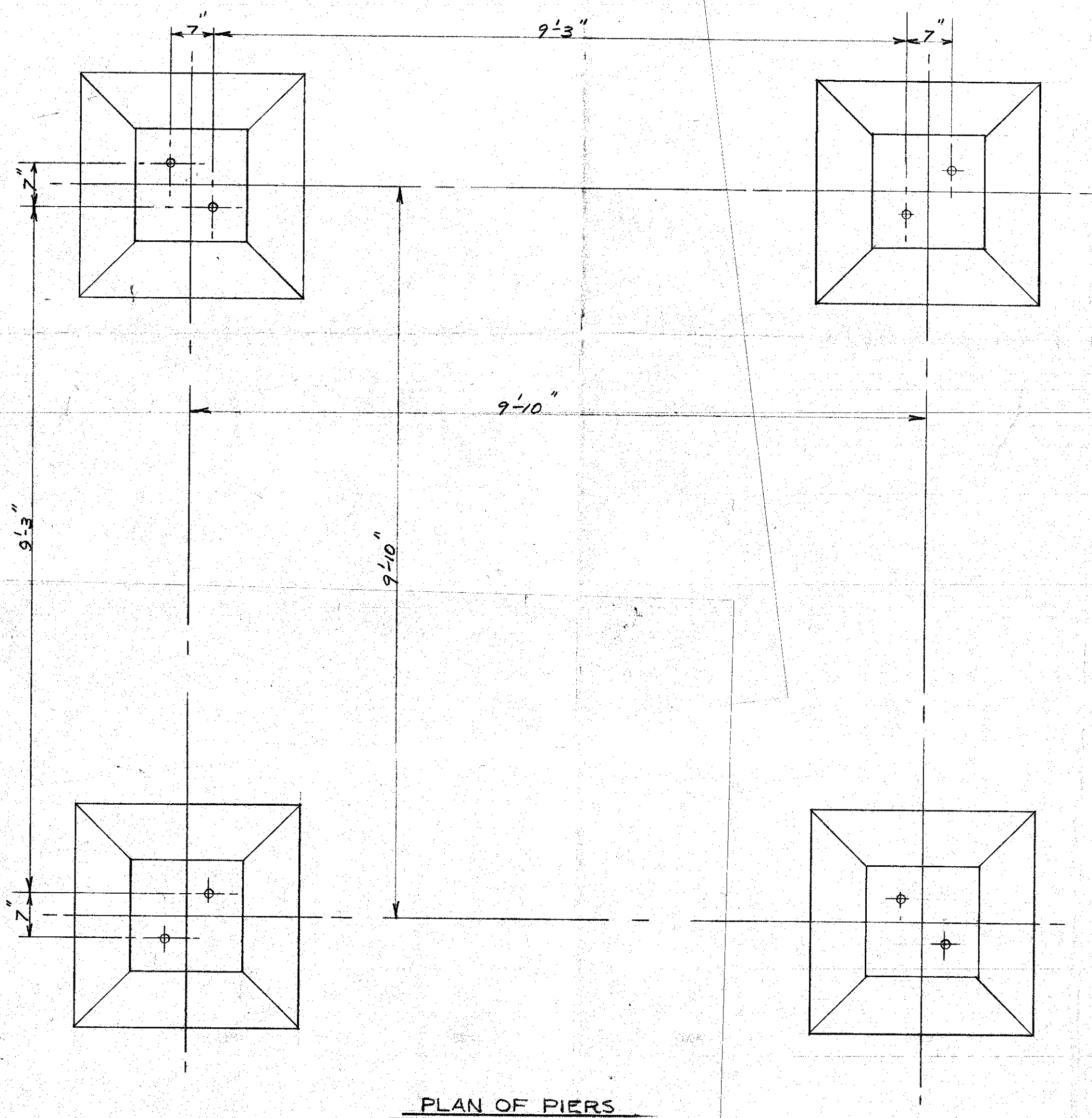
MATERIAL	QTY.	WT. LB.
1 1/2"X1 1/2"X1/4" M.S.L	36'-0"	85
2"X2"X1/4" M.S.L	246'-0"	786
2 1/2"X2 1/2"X1/4" M.S.L	248'-0"	1017
3X3"X1/4" M.S.L	80'-0"	392
1/4" M.S.R	82'SQ.FT.	820
3/8" M.S.R	8'SQ.FT.	124
3/8" X 1/2" BOLTS 1/4" L.W.	28	
3/8" X 4" " " " "	6	
1/2" X 1 1/2" " " " "	136	
3/4" X 1 1/2" " " " "	403	
1/4" X 2" " " " "	4	

CHANGE  
MARCH 6-1968  
REDRAWN, NOTE 7  
ADDED & BOLT LIST  
CHANGED.  
D.M.P.  
ISSUE: 2

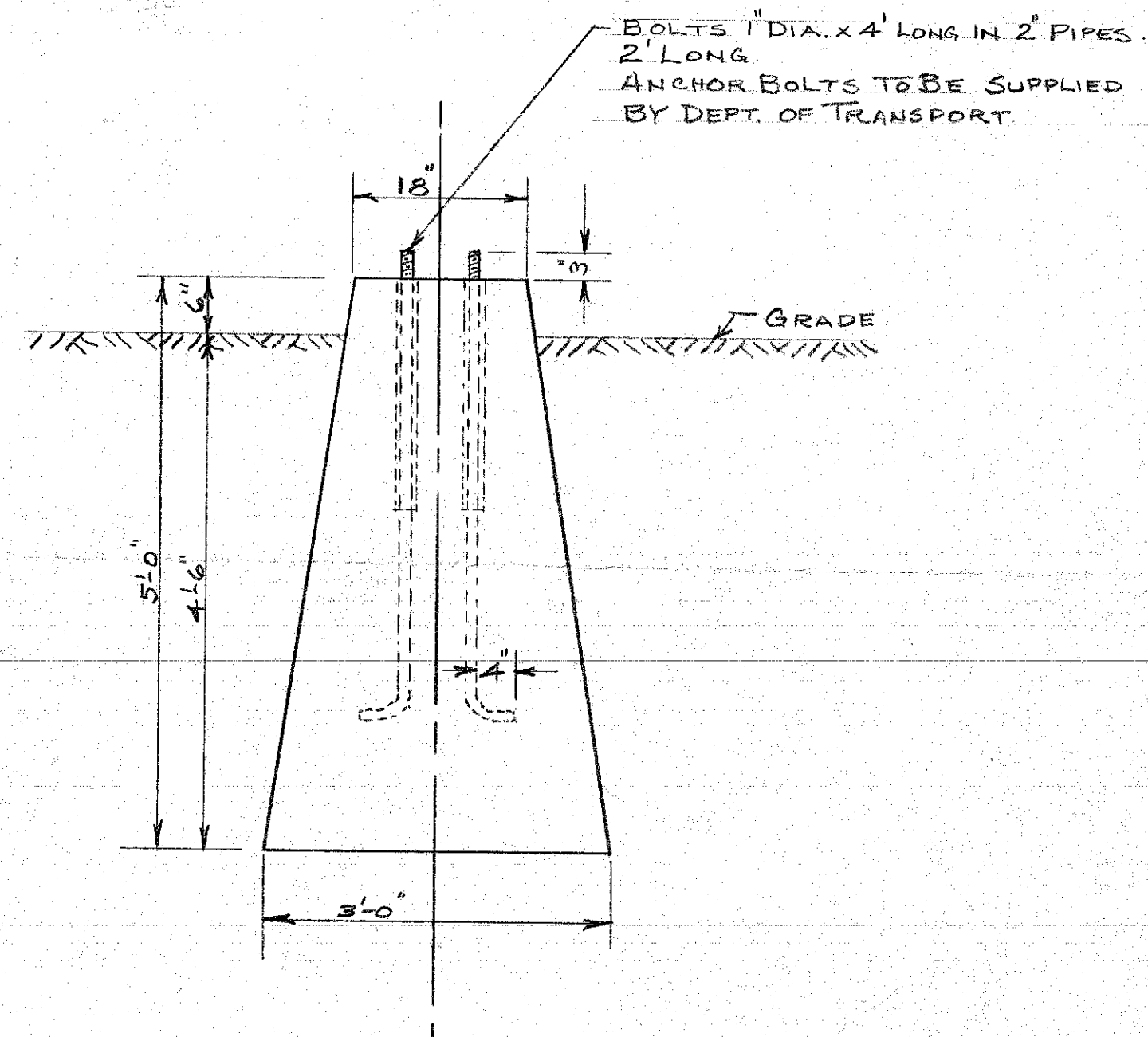
DEC. 11-1969  
NOTE 1 CHANGED  
D.M.P.  
ISSUE: 3

ISSUE: 2  
DEPARTMENT OF TRANSPORT  
MARINE SERVICES BRANCH  
PRESCOTT AGENCY  
PRESCOTT ONTARIO

40' STRUCTURAL STEEL TOWER  
AS SHOWN SHEET 1 OF 2  
PF-4108-TS F



PLAN OF PIERS



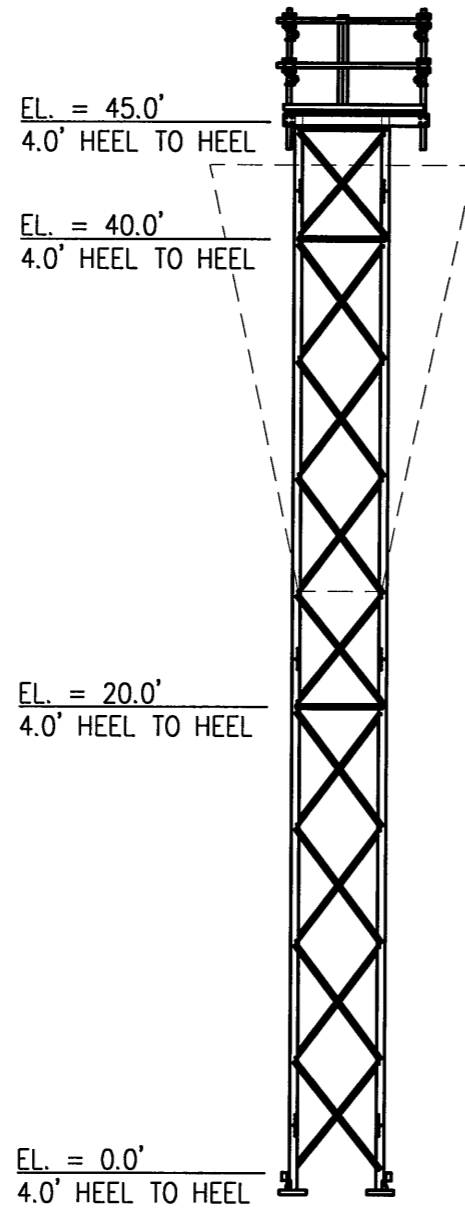
TYPICAL ELEVATION OF PIERS

BOLTS 1" DIA. x 4' LONG IN 2" PIPES.  
2' LONG.  
ANCHOR BOLTS TO BE SUPPLIED  
BY DEPT. OF TRANSPORT

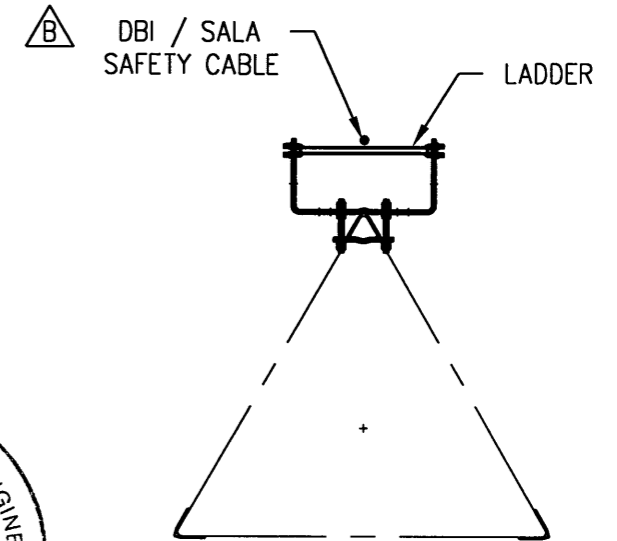
- NOTE
1. CONCRETE TO BE 3000lb 28 DAYS  
2% CALCIUM CHLORIDE TO BE  
ADDED IN COLD WEATHER.
  2. EXCAVATION AND CONCRETE TO BE  
PROTECTED FROM FREEZING BY  
COVERING WITH STRAW AND TARPAILINS.

DEPARTMENT OF TRANSPORT MARINE SERVICES BRANCH AIDS TO NAVIGATION DIVISION <small>OTTAWA ONTARIO</small>	
FOOTINGS FOR 55' STEEL TOWER RANGE LIGHT TYPE	
DESIGNED	SCALE: - 3/4" = 1'-0"
DRAWN	SHEET 1 OF 1 SHEETS
CHECKED	
APPROVED	
DATE: SEPT 15/58	AR-14824

INSTALL DRAWING	1501 & 1502	1503	1504
LEG	V 4" x 4" x 3/8" - 50W	V 4" x 4" x 1/4" - 50W	
DIAGONAL	L 2" x 2" x 3/16" - 44W		
HORIZONTAL	L 2" x 2" x 3/16" - 44W		



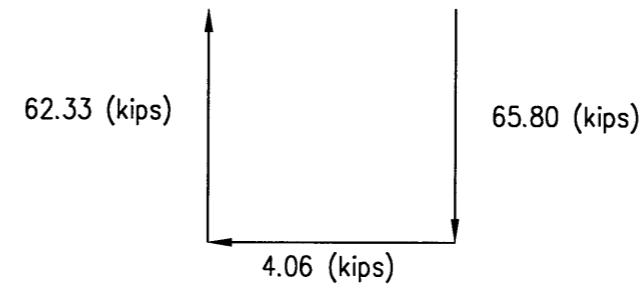
**45° KDSS ANGLE LEG TOWER - CORNWALL ISLAND, ON**



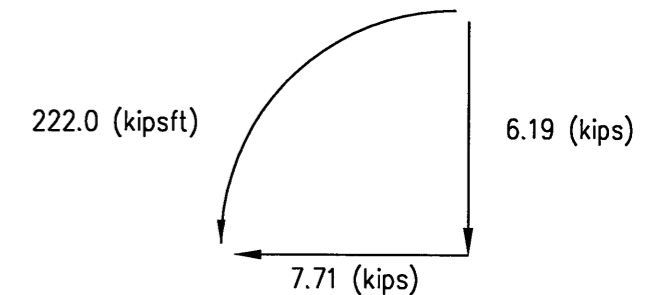
**TOWER CROSS SECTION**

**TOWER DESIGNED TO:**

DESIGN CODE: NBCC 2005  
WIND PRESSURE: 410 Pa (NBC 1995)  
SNOW LOAD: 2.2 kPa  
IMPORTANCE CATEGORY: NORMAL  
UNIFORM LIVE LOAD ON PLATFORM: 4.8 kPa



**TOWER FOUNDATION LOADS  
(PER FOUNDATION)**



**GLOBAL FOUNDATION LOADS  
(PER FOUNDATION)**

NOTES: 1) FOUNDATION LOADS ARE FACTORED.

CONFIDENTIAL: ALL INTELLECTUAL PROPERTY RIGHTS HEREIN ARE THE PROPERTY OF TRYLON MANUFACTURING COMPANY LTD. ALL DUPLICATION, RECORDING, DISCLOSURE OR USE IS PROHIBITED WITHOUT WRITTEN CONSENT OF TRYLON MANUFACTURING COMPANY LTD.



REV.	REV. BY:	CHK. BY:	DESCRIPTION	DATE
B	EP	TLD	REVISED AS PER CUSTOMER REQUEST	19 SEP 06
A	EP	CR	ISSUE FOR CONSTRUCTION	15 AUG 06

CUSTOMER: FISHERIES&OCEANS CANADA	SITE: CORNWALL ISLAND, ON	SCALE: 100.000
DATE: 08 NOV 06	BY: EP	CHK: CR
TITLE: TOWER PROFILE		APP: BZ
DRAWING NO. 636300.310.0301		