



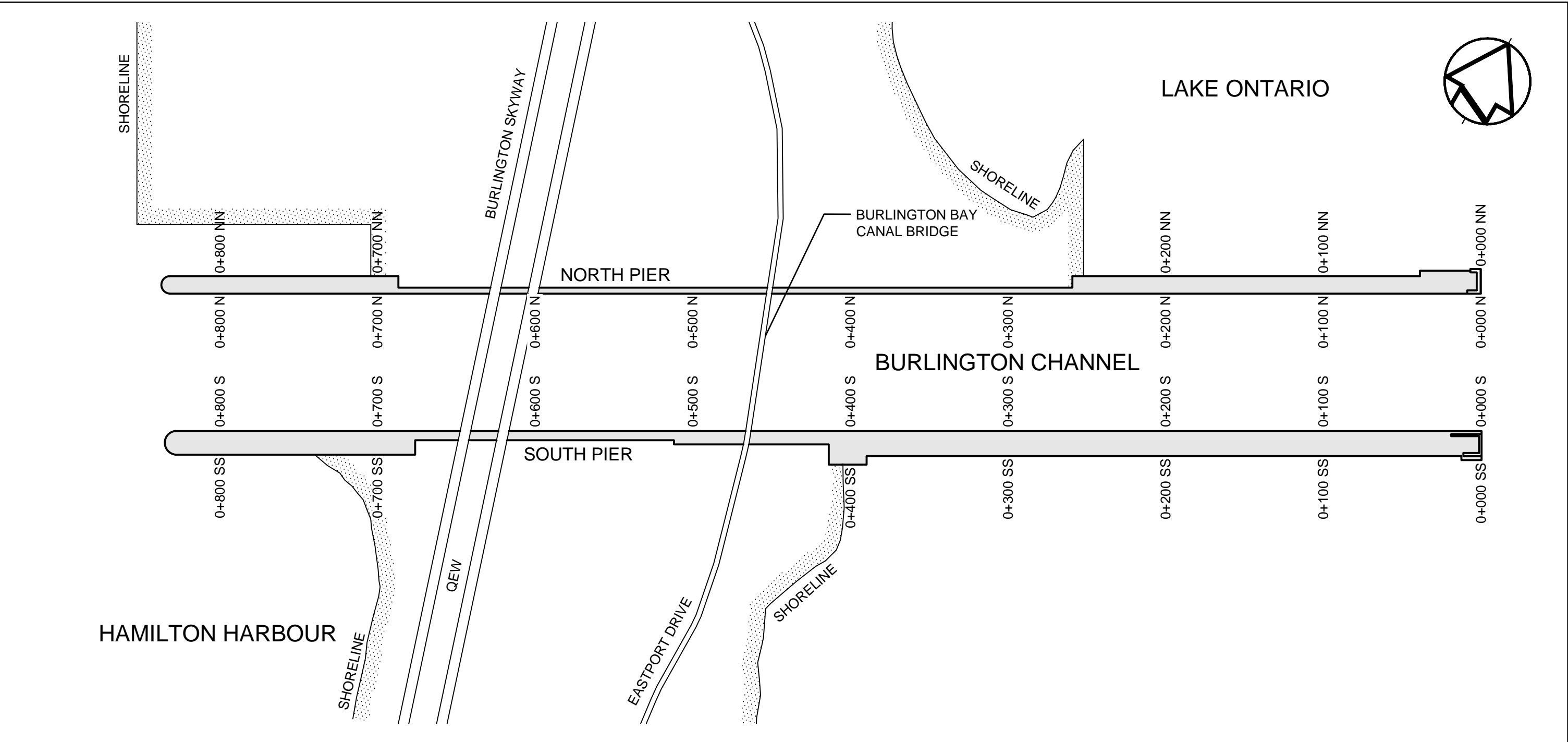
Public Works
Government Services
Canada

Ontario Region

Travaux publics
Services gouvernementaux
Canada

Région de l'Ontario

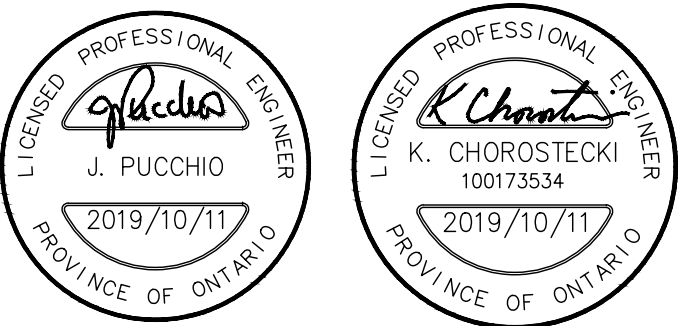
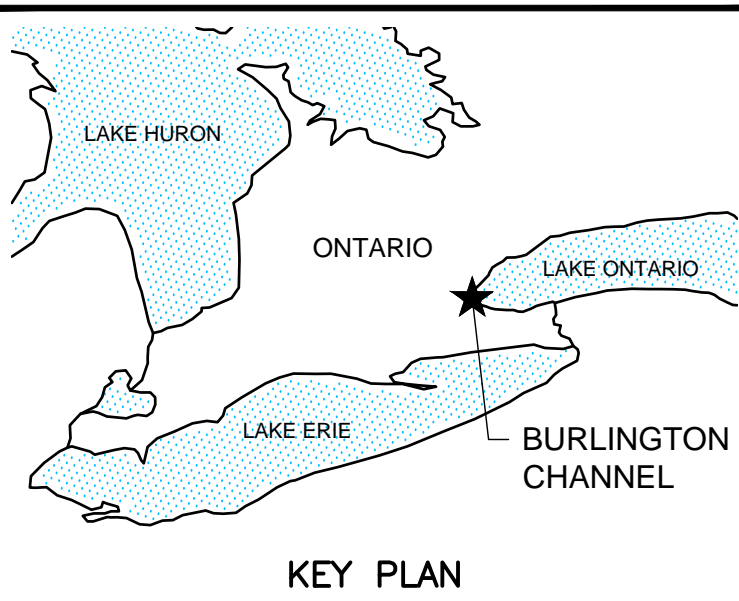
BURLINGTON, ONTARIO.
PUBLIC WORKS AND GOVERNMENT SERVICES CANADA
BURLINGTON CHANNEL SOUTH PIER REPAIRS
PWGSC Proj. No.: R.106016.001



LIST OF DRAWINGS

- S-01 NOTES, ABBREVIATIONS AND LEGENDS
- S-02 SITE PLAN
- S-03 PLAN - PIER REHABILITATION
STA. 0+000 TO STA. 0+180
- S-04 PLAN - PIER REHABILITATION
STA. 0+180 TO STA. 0+360
- S-05 PLAN - PIER REHABILITATION
STA. 0+360 TO STA. 0+540
- S-06 PLAN - PIER REHABILITATION
STA. 0+540 TO STA. 0+720
- S-07 PLAN - PIER REHABILITATION
STA. 0+720 TO STA. 0+840
- S-08 MISCELLANEOUS DETAILS - 1
- S-09 MISCELLANEOUS DETAILS - 2

Public Works and
Government Services Canada
Travaux publics et
Services gouvernementaux Canada



0	ISSUED FOR TENDER	2019/10/11
revision	description	date

Do not scale drawings.
Verify all dimensions and conditions on site and immediately
notify the Departmental Representative of all discrepancies.

A	Detail No.
B	No. du détail
C	drawing no. - where detail required dessin no. - où détail exigé
	drawing no. - where detailed dessin no. - où détaillé

project title
titre du projet
BURLINGTON Ontario
BURLINGTON CHANNEL
SOUTH PIER REPAIRS

drawing title
titre du dessin

drawn by
dessiné par
T.G.

designed by
conçu par
K.C.

approved by
approuvé par
J.P.

bid
offre
S.K.

project manager
administrateur
de projets

project date
date du projet
2019-10-11

project no.
no. du projet
R.106016.001

drawing no.
dessiné no.



London, Ontario
519.673.0510
No. : 60612416



GENERAL NOTES :

1. SAFEGUARD ALL EXISTING STRUCTURES, SERVICES AND UTILITIES WHICH WILL BE AFFECTED BY THE WORK OF THIS CONTRACT.
2. BEFORE PROCEEDING WITH THE WORK, CHECK AND VERIFY ALL DIMENSIONS AND ALL ELEVATIONS SHOWN ON THE DRAWINGS AND REPORT ANY DISCREPANCIES.
3. THE CONTRACTOR SHALL BE RESPONSIBLE FOR ALL ENVIRONMENTAL PROTECTION AND CONSTRAINTS DURING PERFORMANCE OF THE WORK.
4. ALL DIMENSIONS IN MILLIMETERS, UNLESS OTHERWISE NOTED.
5. THE USE OF THE TERM 'TYPICAL' AND '(TYP.)' DENOTES A COMMON DIMENSION, FEATURE, FORM OF CONSTRUCTION AND SCOPE OF WORK, WHICH IS APPLICABLE TO OTHER LOCATIONS ON THE DRAWING (TO AVOID REPETITION).

CONSTRUCTION NOTES :

1. THE LOCATION OF POLE LINES, CONDUITS, WATERMAIN, SEWERS AND OTHER UTILITIES ARE NOT NECESSARILY SHOWN ON THE CONTRACT DRAWINGS, AND WHERE SHOWN THE ACCURACY OF THE LOCATION OF SUCH UTILITIES AND STRUCTURES IS NOT GUARANTEED.
2. BEFORE STARTING WORK THE CONTRACTOR SHALL LOCATE ALL UTILITIES AND SHALL PROTECT THEM FROM DAMAGE.
3. ALL WORK SHALL MEET THE MINIMUM STANDARDS OF THE SPECIFICATIONS AND THE OCCUPATIONAL HEALTH AND SAFETY ACT (OHSA).
4. ENVIRONMENTAL APPLICATIONS HAVE BEEN FILED WITH VARIOUS AUTHORITIES HAVING JURISDICTION. THE CONTRACTOR SHALL BE RESPONSIBLE FOR ALL ENVIRONMENTAL PROTECTION AND CONSTRAINTS DURING PERFORMANCE OF THE WORK.
5. THE CONTRACTOR SHALL INSTALL AND MAINTAIN A SECURE SITE PERIMETER FENCE AT ALL TIMES DURING CONSTRUCTION. FENCING SHALL INCLUDE SIGNAGE NOTIFYING PUBLIC OF HAZARDS. LOCKABLE GATES SHALL BE INSTALLED TO PROVIDE VEHICLE AND PERSONNEL ACCESS.
6. ALL DISTURBED AREAS SHALL BE RESTORED TO ORIGINAL OR BETTER CONDITION.
7. THE CONTRACTOR SHALL PREPARE AND MAINTAIN A WORKING AS BUILT FULL SIZE 'REDLINE' MARKUP SET OF THE CONTRACT DRAWINGS. WORKING AS BUILTS SHALL BE KEPT CURRENT ON A WEEKLY BASIS AND BE AVAILABLE ON THE JOB SITE AT ALL TIMES. THE 'REDLINE' SET SHALL DEPICT ALL CURRENT VARIATIONS/DEVIATIONS (INCLUDING, BUT NOT LIMITED TO THE FOLLOWING: ADDENDUMS, CHANGE ORDERS, FIELD ADJUSTMENTS, EXISTING AND NEW UTILITY LINES). MEASUREMENTS ARE TO BE SHOWN FOR ALL CHANGE OF DIRECTION POINTS AND ALL COMPONENTS. THESE SHALL BE SHOWN WITH TWO OFFSET DISTANCES TO PERMANENTLY FIXED FEATURES.

MATERIAL SPECIFICATIONS :

1. CONCRETE: IN ACCORDANCE WITH CSA A23.1/ A23.2.
CLASS OF CONCRETE:
REMAINDER 30 MPa
CLEAR COVER TO REINFORCING STEEL :
REMAINDER 70 ± 20mm
2. STRUCTURAL CONCRETE UNLESS OTHERWISE NOTED: 30 MPa AT 28 DAYS, EXPOSURE CLASSIFICATION F-1.
3. REINFORCING STEEL: CSA G30.18, GRADE 400, DEFORMED BARS.
4. STRUCTURAL STEEL: CSA G40.20/G40.21, GRADE 350W ROLLED SECTIONS, 300W PLATES.
5. BOLTS : ASTM F3125M (25 mm DIAMETER, UNLESS NOTED OTHERWISE).
6. ANCHORS: ASTM A307.
7. WELDING: CSA W59 PERFORMED BY WELDERS MEETING THE REQUIREMENTS OF CSA W47.
8. UNLESS OTHERWISE NOTED THE MINIMUM FILLET WELD SHALL BE AS FOLLOWS:

MATERIAL THICKNESS OF THICKER PART JOINED (mm)	MINIMUM SIZE OF SINGLE PASS FILLET WELD (mm)
TO 12 INCLUSIVE	5
OVER 12 TO 20	6
OVER 20 TO 40	8
OVER 40 TO 60	10
OVER 60 TO 80	12
9. DOWELS INTO CONCRETE: CHEMICAL ADHESIVE TYPE. DRILL HOLES SHALL BE DOWEL DIAMETER +4mm. MODIFY DIAMETER AS REQUIRED TO SUIT THE REQUIREMENTS OF THE CHEMICAL ADHESIVE MANUFACTURER.

15M DOWELS: EMBEDMENT = 150mm MINIMUM
EDGE DISTANCE = 90mm (U.N.O.)
20M DOWELS: EMBEDMENT = 200mm MINIMUM
EDGE DISTANCE = 100mm (U.N.O.)

ABBREVIATIONS :

BOT.	BOTTOM	MAX.	MAXIMUM
CONC.	CONCRETE	MIN.	MINIMUM
CL.	CENTRE LINE	MISC.	MISCELLANEOUS
C.J.	CONSTRUCTION JOINT	mm	MILLIMETERS
CONT.	CONTINUOUS	N.T.S.	NOT TO SCALE
DIA.	DIAMETER	PL.	PLATE
DWG.	DRAWING	R/W	RETAINING WALL
E.F.	EACH FACE	SO	SOUNDING
EL.	ELEVATION	SQ.	SQUARE
E.W.	EACH WAY	SSP	STEEL SHEET PILING
E.J.	EXPANSION JOINT	T/C	TOP OF CONCRETE
EX.	EXISTING	T/W	TOP OF WALL
GRAN.	GRANULAR	TYP.	TYPICAL
HWL	HIGH WATER LEVEL	U.O.N.	UNLESS OTHERWISE NOTED
I.G.L.D.	INTERNATIONAL GREAT LAKES DATUM	U/S	UNDERSIDE
LWL	LOW WATER LEVEL	WL	WATER LEVEL
LS	LIGHT STANDARD	W.P.	WORKING POINT
m	METERS		

LEGEND :

	CHAIN LINK FENCE
	SECTION LETTER DRAWING LOCATION
	SECTION NUMBER DRAWING LOCATION
	DETAIL LETTER DRAWING LOCATION

BID SCENARIOS :

1. THE CONTRACTOR SHALL PROVIDE A TENDER BID COST FOR THE FOLLOWING SCENARIOS :

SCENARIO 'A' :
CONCRETE REPAIRS, WHEEL GUARD AND BOLLARDS RECOATING AND GRAB BARS ON NORTH SIDE OF SOUTH PIER ONLY.

SCENARIO 'B' :
ALL WORK INCLUDED IN SCENARIO 'A', AND ADDITIONAL WHEEL GUARD AND BOLLARD RECOATING AND GRAB BARS ON SOUTH SIDE OF WEST END OF SOUTH PIER.

AECOM

London, Ontario
519.673.0510
PN No. : 60612416

THIS DRAWING HAS BEEN PREPARED FOR USE OF AECOM'S CLIENT AND MAY NOT BE USED, REPRODUCED OR RELIED UPON BY THIRD PARTIES, EXCEPT AS AGREED BY AECOM AND ITS CLIENT, AS REQUIRED BY LAW OR FOR USE BY GOVERNMENTAL REVIEWING AGENCIES. AECOM ACCEPTS NO RESPONSIBILITY, AND DENIES ANY LIABILITY WHATSOEVER, TO ANY PARTY THAT MODIFIES THIS DRAWING WITHOUT AECOM'S EXPRESS WRITTEN CONSENT. DO NOT SCALE THIS DOCUMENT. ALL MEASUREMENTS MUST BE OBTAINED FROM STATED DIMENSIONS.



0	ISSUED FOR TENDER	2019/10/11
revision	description	date

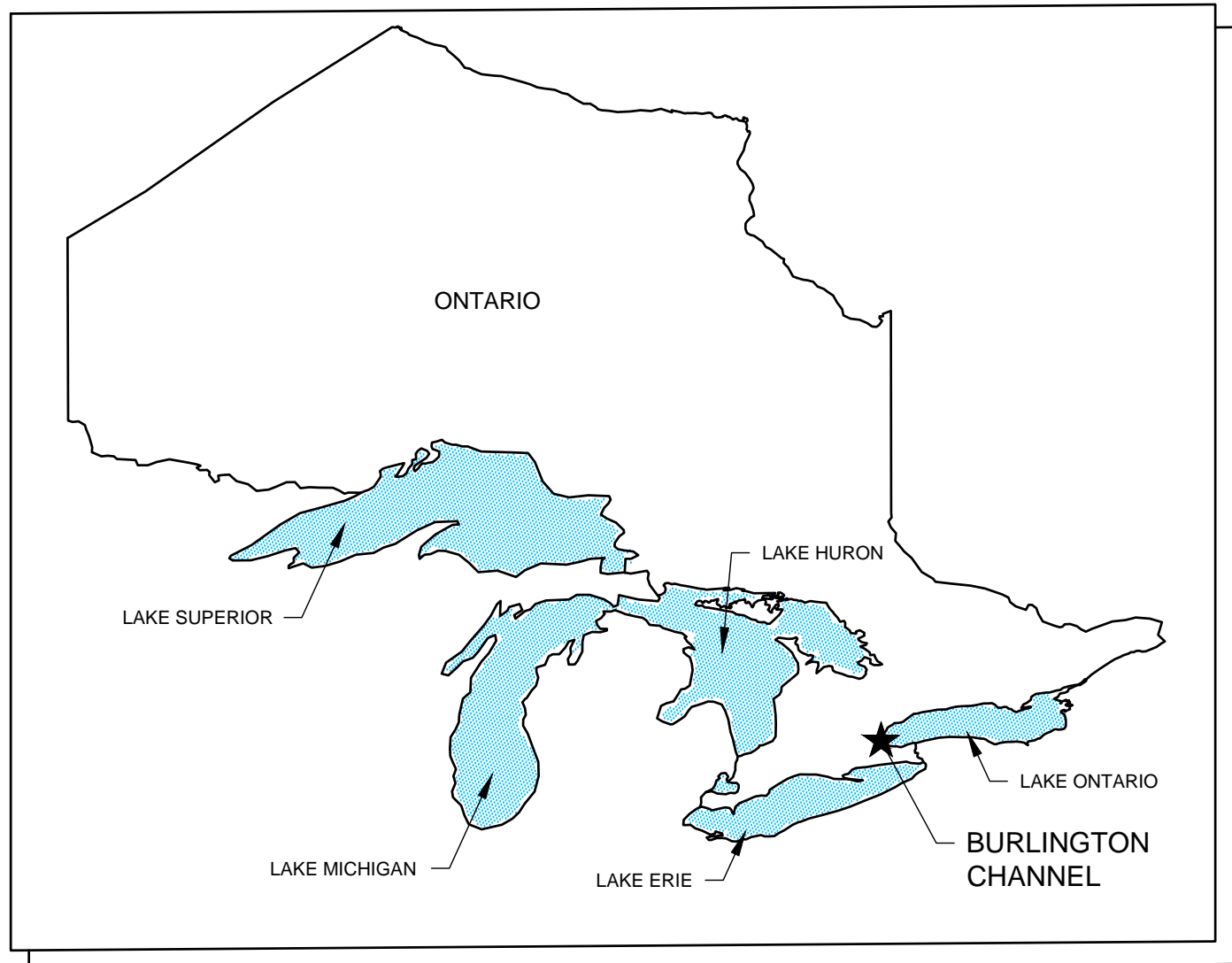
Do not scale drawings.
Verify all dimensions and conditions on site and immediately notify the Departmental Representative of all discrepancies.

	A Detail No. No. du détail B drawing no. - where detail required dessin no. - où détail exigé C drawing no. - where detailed dessin no. - où détaillé
--	----------------------------------------------------------------------------------------------------------------------------------------------------------------------

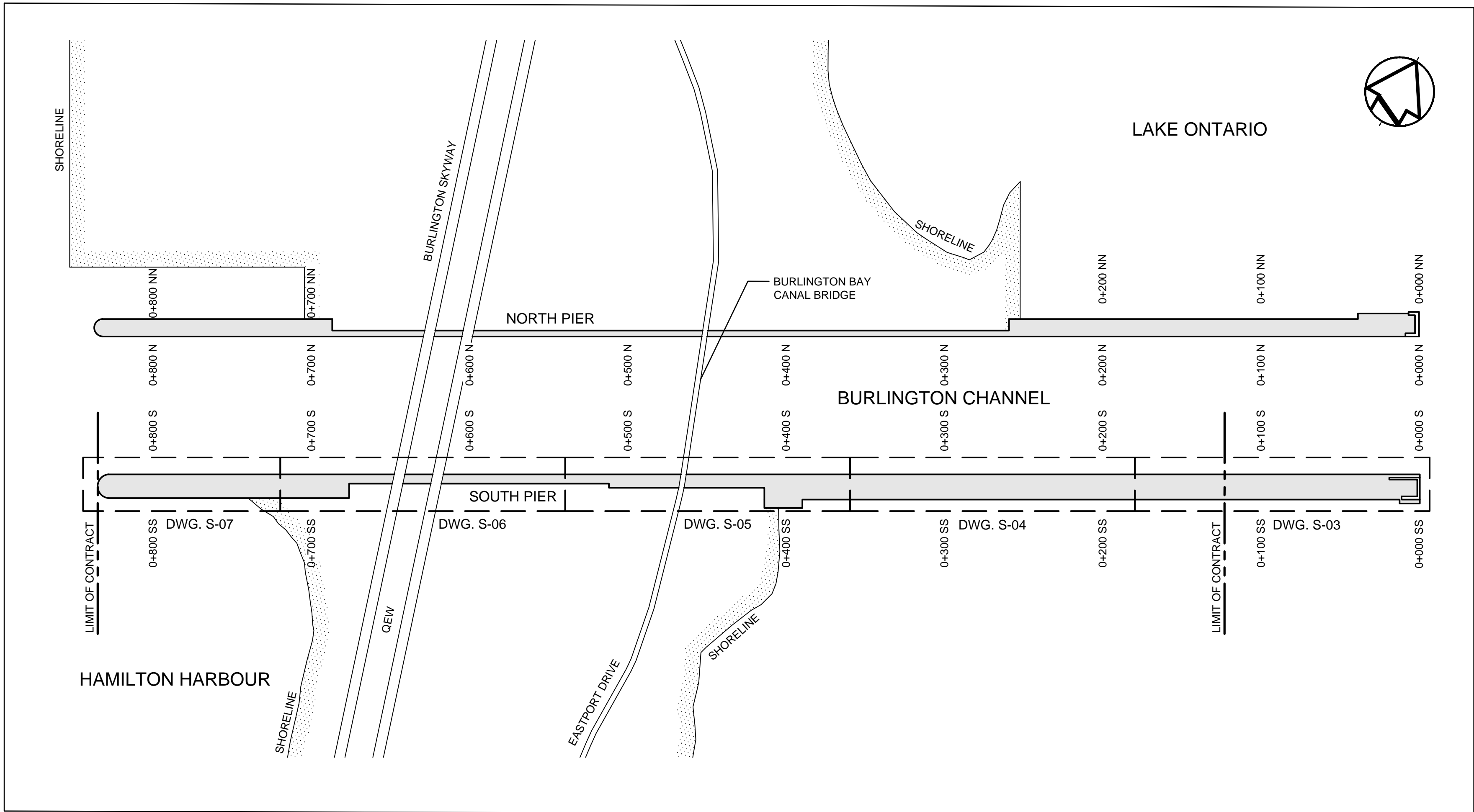
project title
titre du projet
**BURLINGTON
BURLINGTON CHANNEL
SOUTH PIER REPAIRS** Ontario

NOTES, ABBREVIATIONS
AND LEGENDS

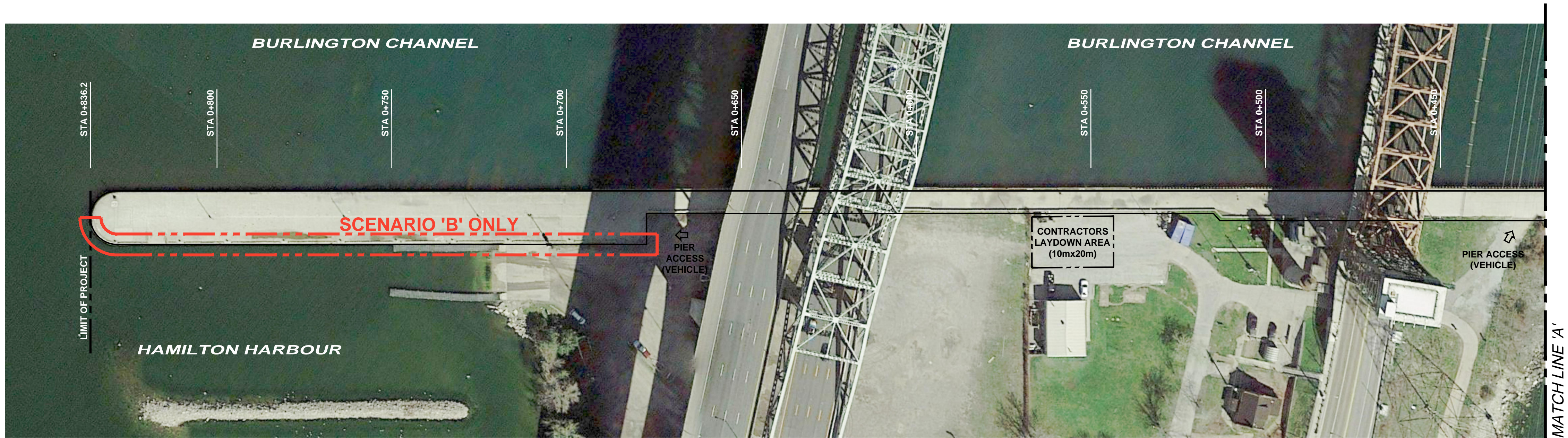
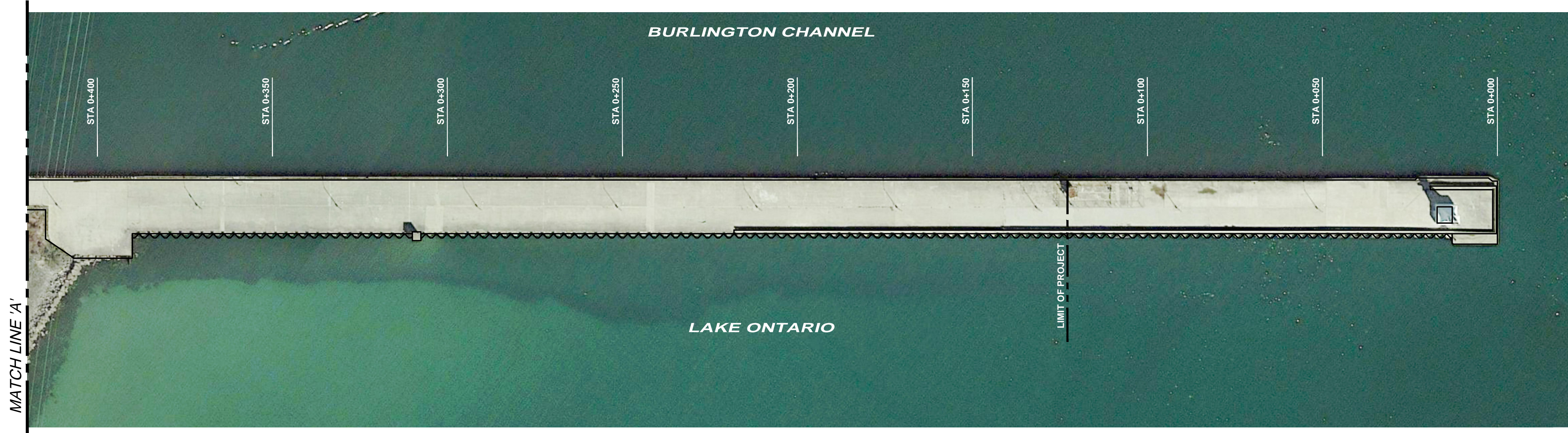
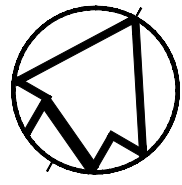
drawn by dessiné par	T.G.
designed by conc par	K.C.
approved by approuvé par	J.P.
bid offre	S.K. project manager administrateur de projets
project date date du projet	2019-10-11
project no. no. du projet	R.106016.001
drawing no. dessiné no.	S-01



KEY MAP



BURLINGTON CHANNEL PLAN
1 : 2000



SITE PLAN
1:750



PHOTO 1 - STA. 0+050 LOOKING WEST

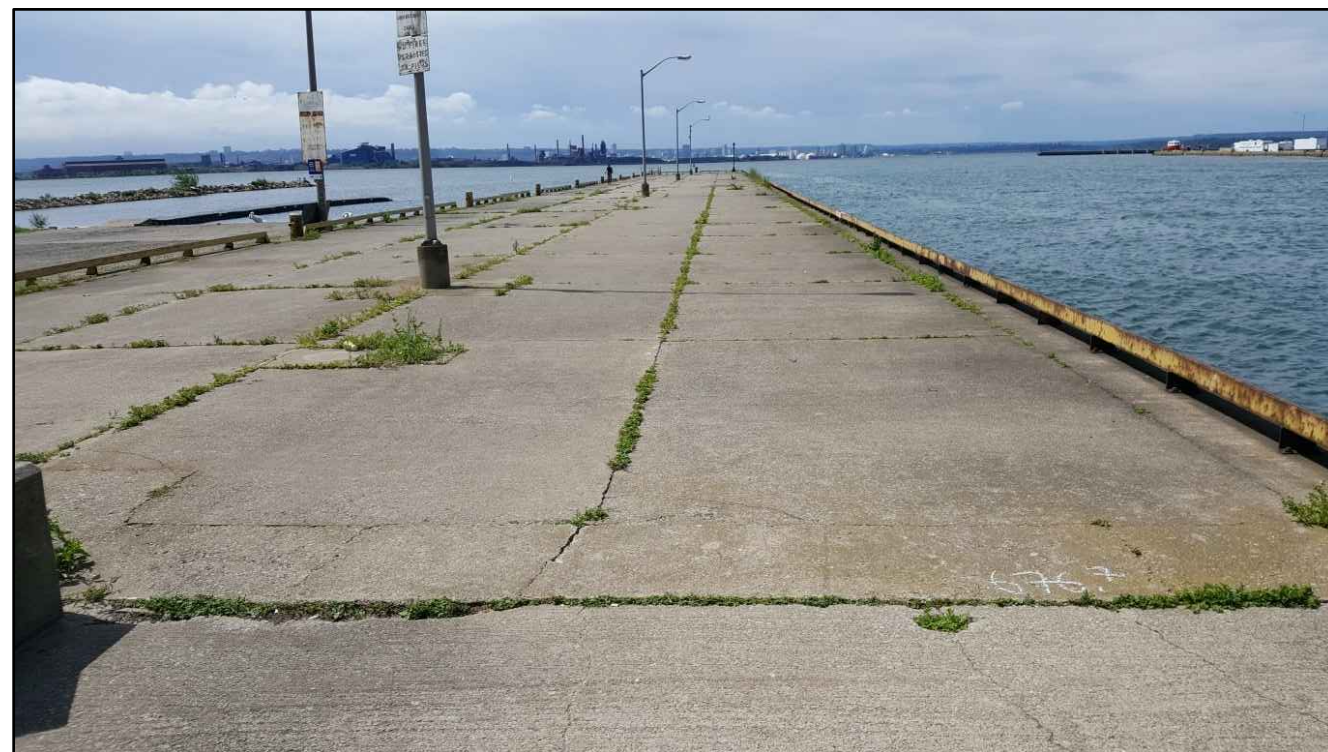



PHOTO 2 - STA. 0+650 LOOKING WEST



PHOTO 3 - STA. 0+820 LOOKING EAST

 Public Works and
Government Services Canada
Travaux publics et
Services gouvernementaux Canada

AECOM

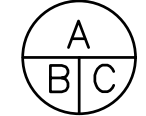


London, Ontario
519.673.0510
PN No. : 60612416

THIS DRAWING HAS BEEN PREPARED FOR USE OF AECOM'S CLIENT AND MAY NOT BE USED, REPRODUCED OR RELIED UPON BY THIRD PARTIES, EXCEPT AS AGREED BY AECOM AND ITS CLIENT, AS REQUIRED BY LAW OR FOR USE BY GOVERNMENTAL REVIEWING AGENCIES. AECOM ACCEPTS NO RESPONSIBILITY, AND DENIES ANY LIABILITY WHATSOEVER, TO ANY PARTY THAT MODIFIES THIS DRAWING WITHOUT AECOM'S EXPRESS WRITTEN CONSENT. DO NOT SCALE THIS DOCUMENT. ALL MEASUREMENTS MUST BE OBTAINED FROM STATED DIMENSIONS.



0	ISSUED FOR TENDER	2019/10/11
revision	description	date

Do not scale drawings.
Verify all dimensions and conditions on site and immediately notify the Departmental Representative of all discrepancies.

	A Detail No.
	No. du détail
	drawing no. - where detail required dessin no. - où détail exigé
	C drawing no. - where detailed dessin no. - où détaillé

project title
titre du projet
BURLINGTON
BURLINGTON CHANNEL
SOUTH PIER REPAIRS
Ontario

drawing title
titre du dessin
SITE PLAN

drawn by
dessiné par
T.G.

designed by
conç par
K.C.

approved by
approuvé par
J.P.

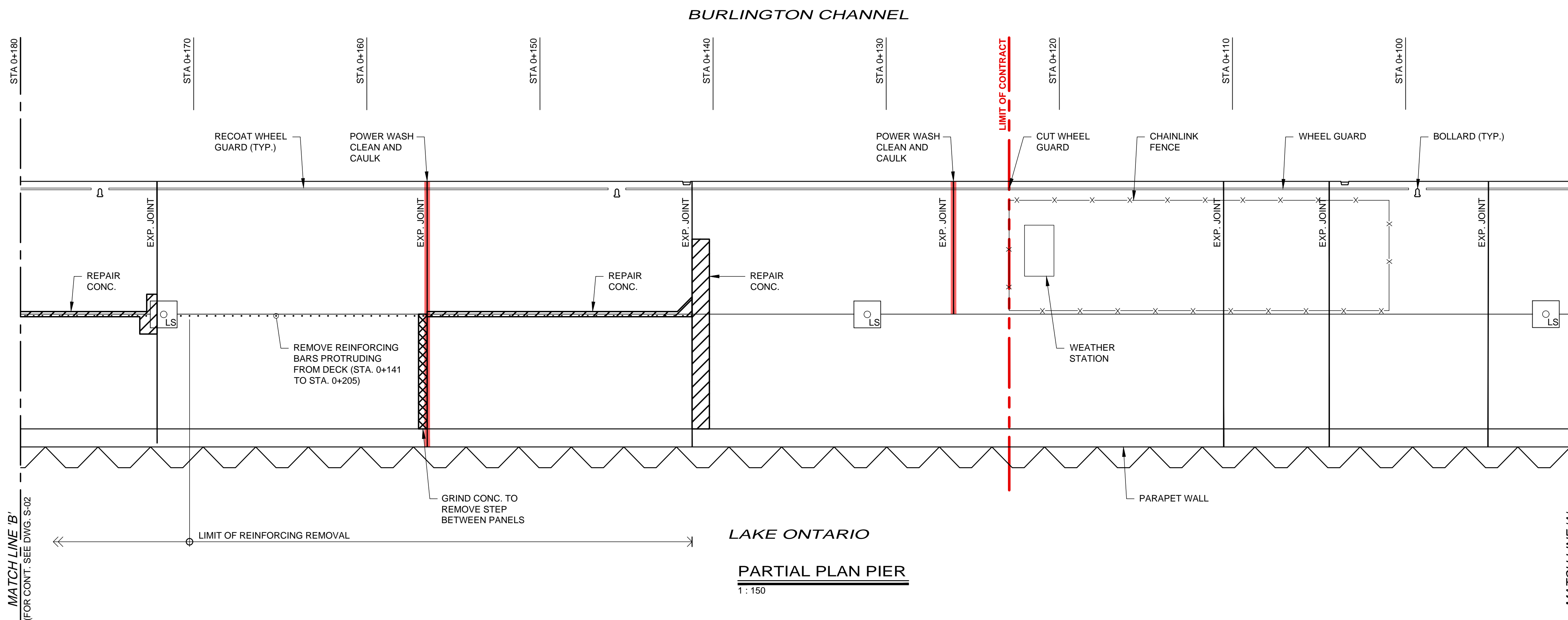
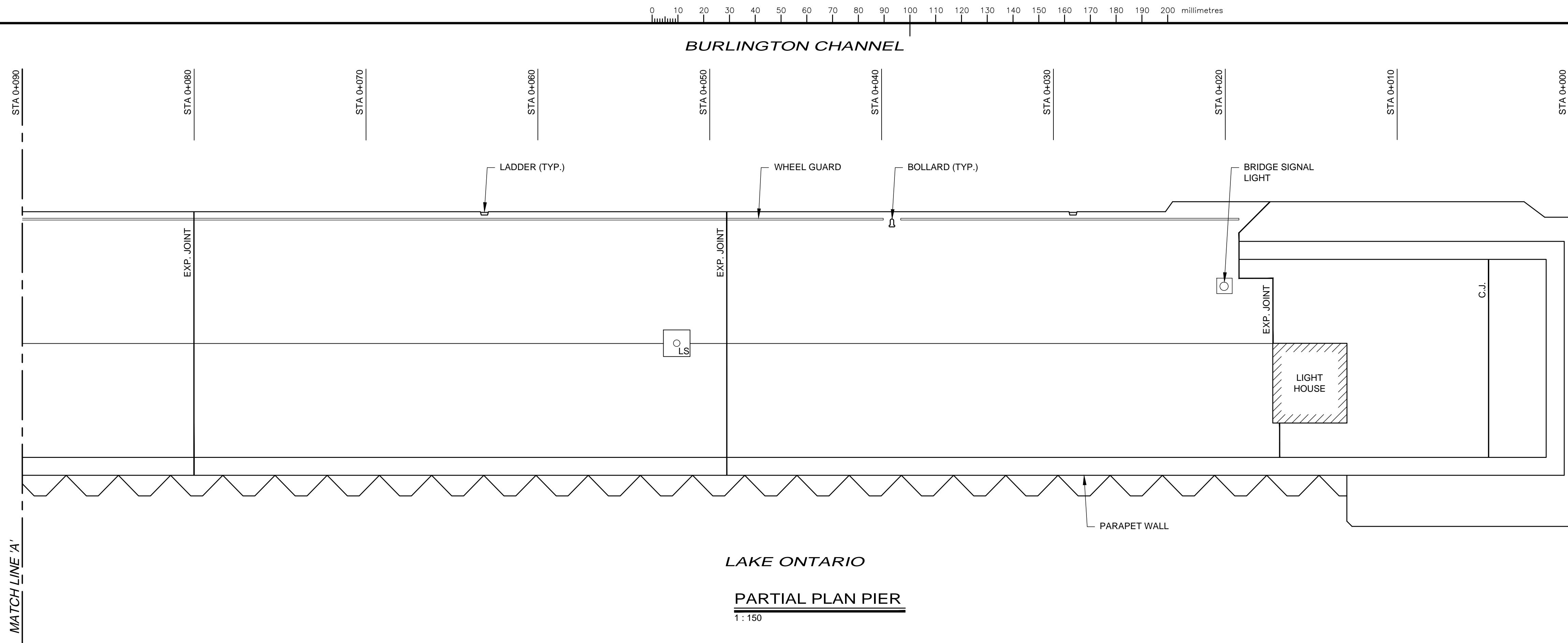
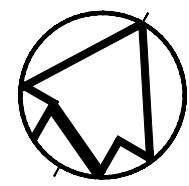
bid
offre
S.K.

project manager
administrateur
de projets

project date
date du projet
2019-10-11

project no.
no. du projet
R.106016.001

drawing no.
dessiné no.
S-02



NOTES :

1. THE LOCATIONS OF ALL CONTROL AND EXPANSION JOINTS ARE NOT NECESSARILY SHOWN ON THE DRAWINGS.
2. TYPICAL AND ANTICIPATED AREAS OF REHABILITATION ARE INDICATED ON THE DRAWINGS. THE ACTUAL LOCATIONS OF REHABILITATION TO BE DETERMINED ON SITE WITH THE DEPARTMENTAL REPRESENTATIVE.
3. WHERE WHEEL GUARD TERMINATES INTO CONCRETE DECK, CUT RAIL IMMEDIATELY ABOVE DECK AT BEND (TYPICAL ALL BOLLARDS). SEE POSSIBLE DETAIL ON DRAWING S-08.

Public Works and
Government Services Canada
Travaux publics et
Services gouvernementaux Canada

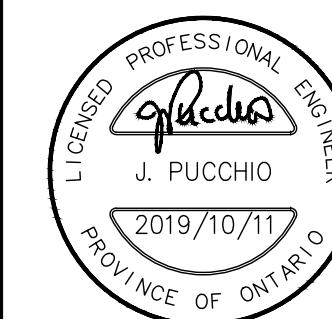
AECOM

London, Ontario
519.673.0510
PN No. : 60612416

THIS DRAWING HAS BEEN PREPARED FOR USE OF AECOM'S CLIENT AND MAY NOT BE USED, REPRODUCED OR RELIED UPON BY THIRD PARTIES, EXCEPT AS AGREED BY AECOM AND ITS CLIENT, AS REQUIRED BY LAW OR FOR USE BY GOVERNMENTAL REVIEWING AGENCIES. AECOM ACCEPTS NO RESPONSIBILITY, AND DENIES ANY LIABILITY WHATSOEVER, TO ANY PARTY THAT MODIFIES THIS DRAWING WITHOUT AECOM'S EXPRESS WRITTEN CONSENT. DO NOT SCALE THIS DOCUMENT. ALL MEASUREMENTS MUST BE OBTAINED FROM STATED DIMENSIONS.

LEGEND:

- CONCRETE REPAIRS
- CONCRETE GRINDING
- POWER WASH CLEAN AND CAULK



0	ISSUED FOR TENDER	2019/10/11
revision	description	date

Do not scale drawings.
Verify all dimensions and conditions on site and immediately
notify the Departmental Representative of all discrepancies.

A	Detail No.
B	No. du détail
C	drawing no. - where detail required dessin no. - où détail exigé
C	drawing no. - where detailed dessin no. - où détaillé

project title
titre du projet
BURLINGTON
BURLINGTON CHANNEL
SOUTH PIER REPAIRS
Ontario

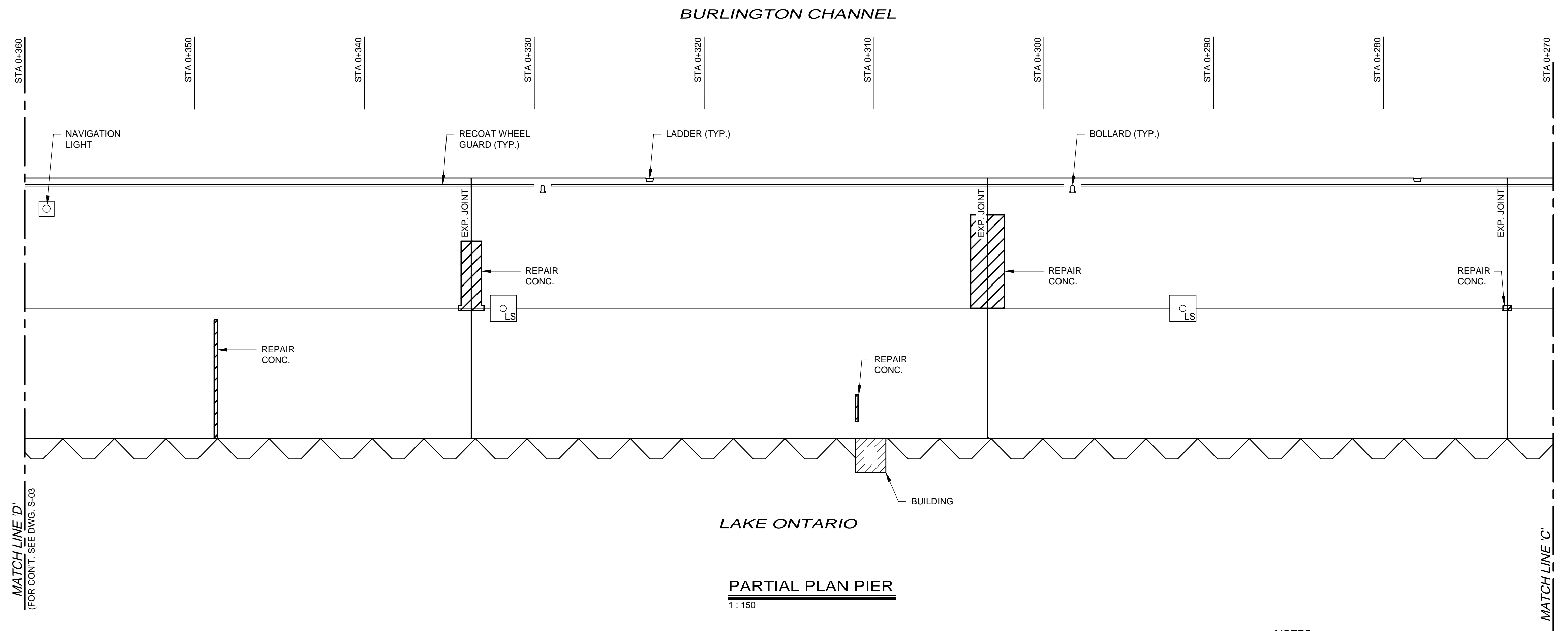
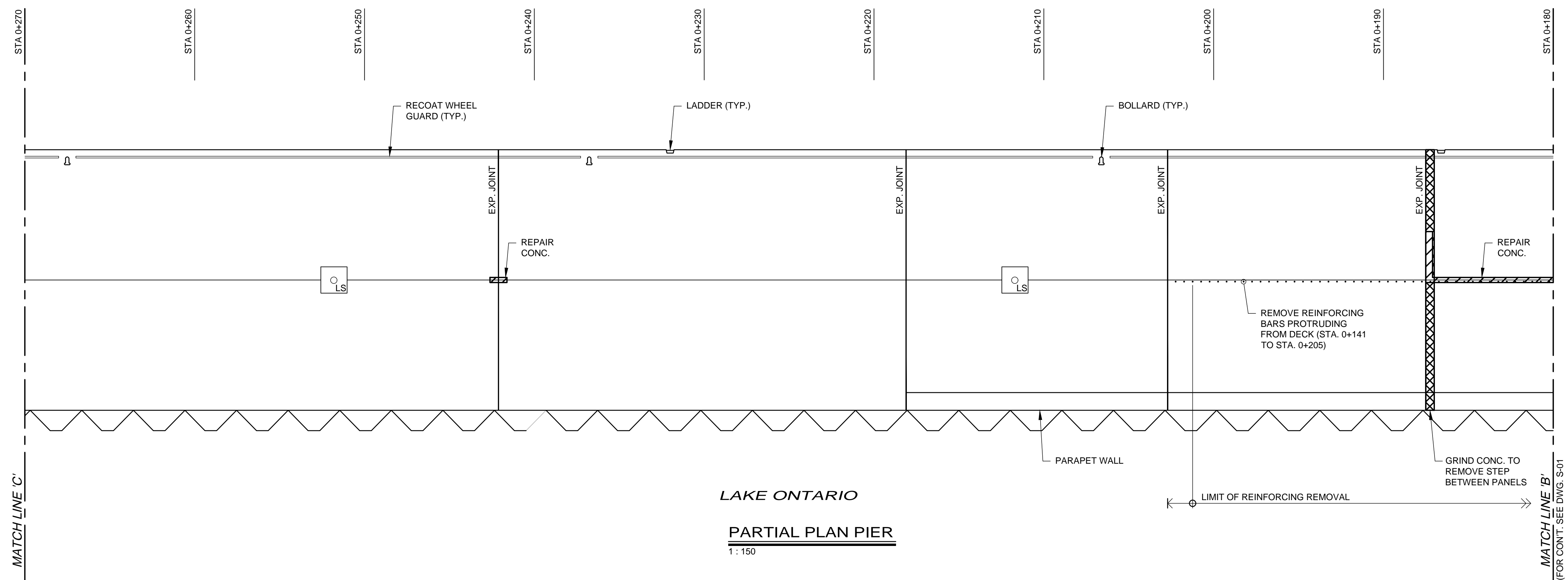
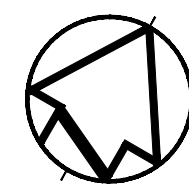
drawing title
titre du dessin
PLAN - PIER REHABILITATION
STA. 0+000 TO STA. 0+180

drawn by dessiné par	T.G.
designed by conc par	K.C.
approved by approuvé par	J.P.
bid offre	S.K.
project manager administrateur de projets	

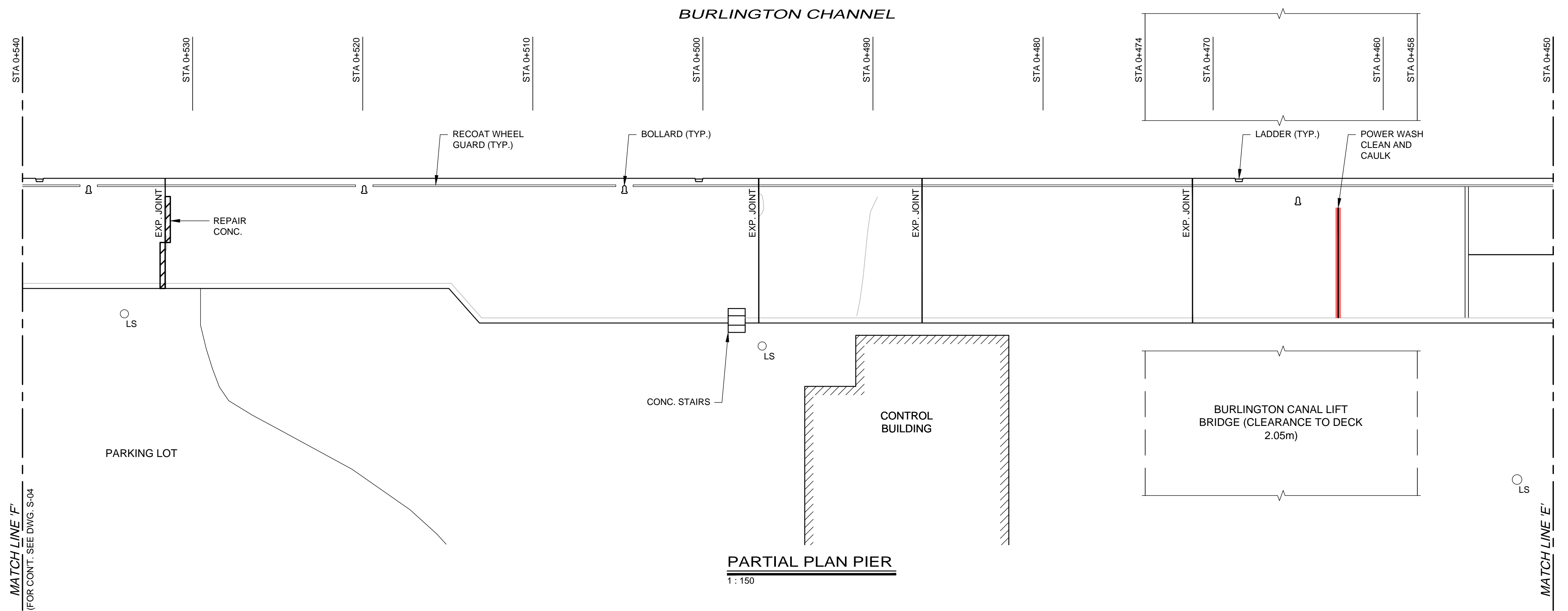
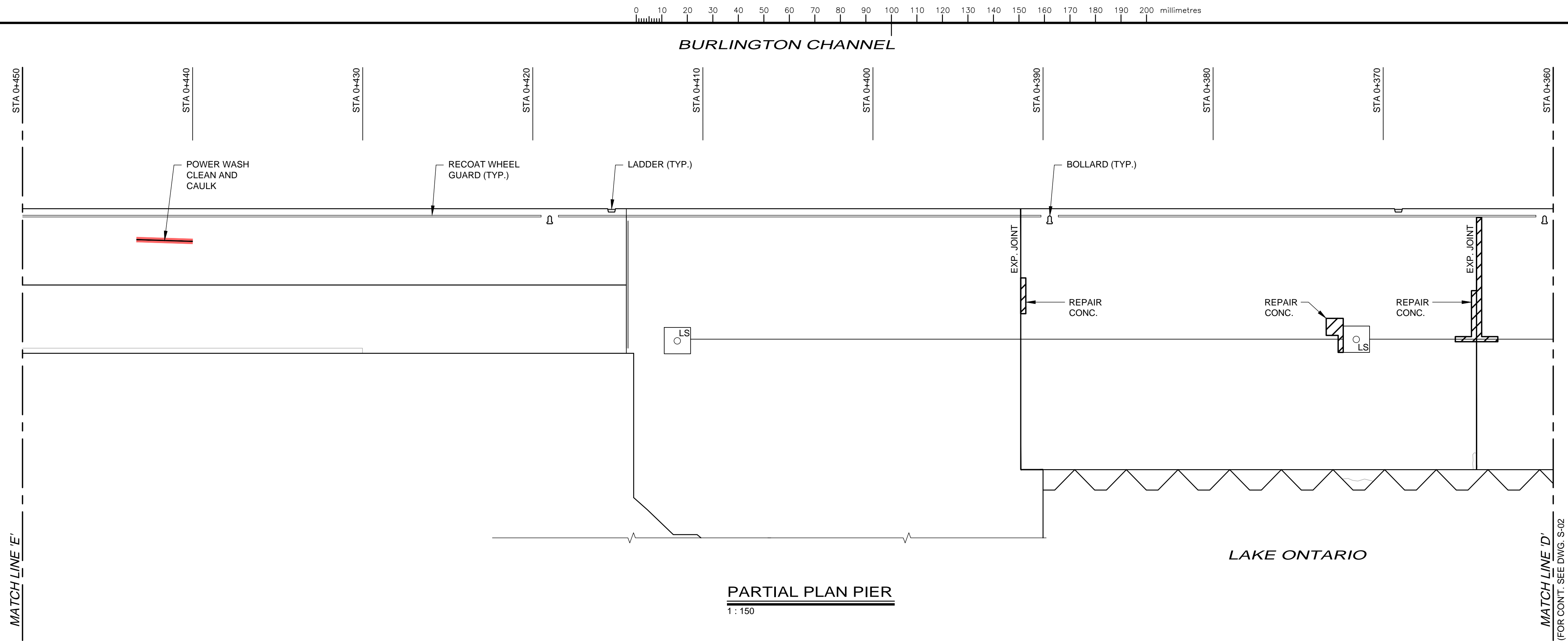
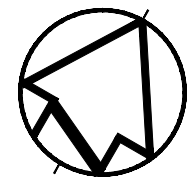
project date
date du projet
2019-10-11

project no.
no. du projet
R.106016.001

drawing no.
dessiné no.
S-03



- NOTES :
1. THE LOCATIONS OF ALL CONTROL AND EXPANSION JOINTS ARE NOT NECESSARILY SHOWN ON THE DRAWINGS.
 2. TYPICAL AND ANTICIPATED AREAS OF REHABILITATION ARE INDICATED ON THE DRAWINGS. THE ACTUAL LOCATIONS OF REHABILITATION TO BE DETERMINED ON SITE WITH THE DEPARTMENTAL REPRESENTATIVE.
 3. WHERE WHEEL GUARD TERMINATES INTO CONCRETE DECK, CUT RAIL IMMEDIATELY ABOVE DECK AT BEND (TYPICAL ALL BOLLARDS), SEE POSSIBLE DETAIL ON DRAWING S-08.



NOTES :

- THE LOCATIONS OF ALL CONTROL AND EXPANSION JOINTS ARE NOT NECESSARILY SHOWN ON THE DRAWINGS.
- TYPICAL AND ANTICIPATED AREAS OF REHABILITATION ARE INDICATED ON THE DRAWINGS. THE ACTUAL LOCATIONS OF REHABILITATION TO BE DETERMINED ON SITE WITH THE DEPARTMENTAL REPRESENTATIVE.
- WHERE WHEEL GUARD TERMINATES INTO CONCRETE DECK, CUT RAIL IMMEDIATELY ABOVE DECK AT BEND (TYPICAL ALL BOLLARDS). SEE POSSIBLE DETAIL ON DRAWING S-08.



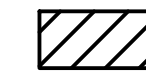
Public Works and
Government Services Canada
Travaux publics et
Services gouvernementaux Canada

AECOM

London, Ontario
519.673.0510
PN No. : 60612416

THIS DRAWING HAS BEEN PREPARED FOR USE OF AECOM'S CLIENT AND MAY NOT BE USED, REPRODUCED OR RELIED UPON BY THIRD PARTIES, EXCEPT AS AGREED BY AECOM AND ITS CLIENT, AS REQUIRED BY LAW OR FOR USE BY GOVERNMENTAL REVIEWING AGENCIES. AECOM ACCEPTS NO RESPONSIBILITY, AND DENIES ANY LIABILITY WHATSOEVER, TO ANY PARTY THAT MODIFIES THIS DRAWING WITHOUT AECOM'S EXPRESS WRITTEN CONSENT. DO NOT SCALE THIS DOCUMENT. ALL MEASUREMENTS MUST BE OBTAINED FROM STATED DIMENSIONS.

LEGEND:

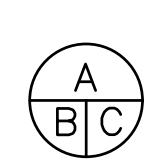


CONCRETE REPAIRS

POWER WASH CLEAN AND
CAULK

0	ISSUED FOR TENDER	2019/10/11
revision	description	date

Do not scale drawings.
Verify all dimensions and conditions on site and immediately
notify the Departmental Representative of all discrepancies.



- A Detail No.
No. du détail
drawing no. - where detail required
dessin no. - où détail exigé
- B
- C drawing no. - where detailed
dessin no. - où détaillé

project title
titre du projet
BURLINGTON
BURLINGTON CHANNEL
SOUTH PIER REPAIRS
Ontario

drawing title
titre du dessin
PLAN - PIER REHABILITATION
STA. 0+360 TO STA. 0+540

drawn by
dessiné par
T.G.

designed by
conc par
K.C.

approved by
approuvé par
J.P.

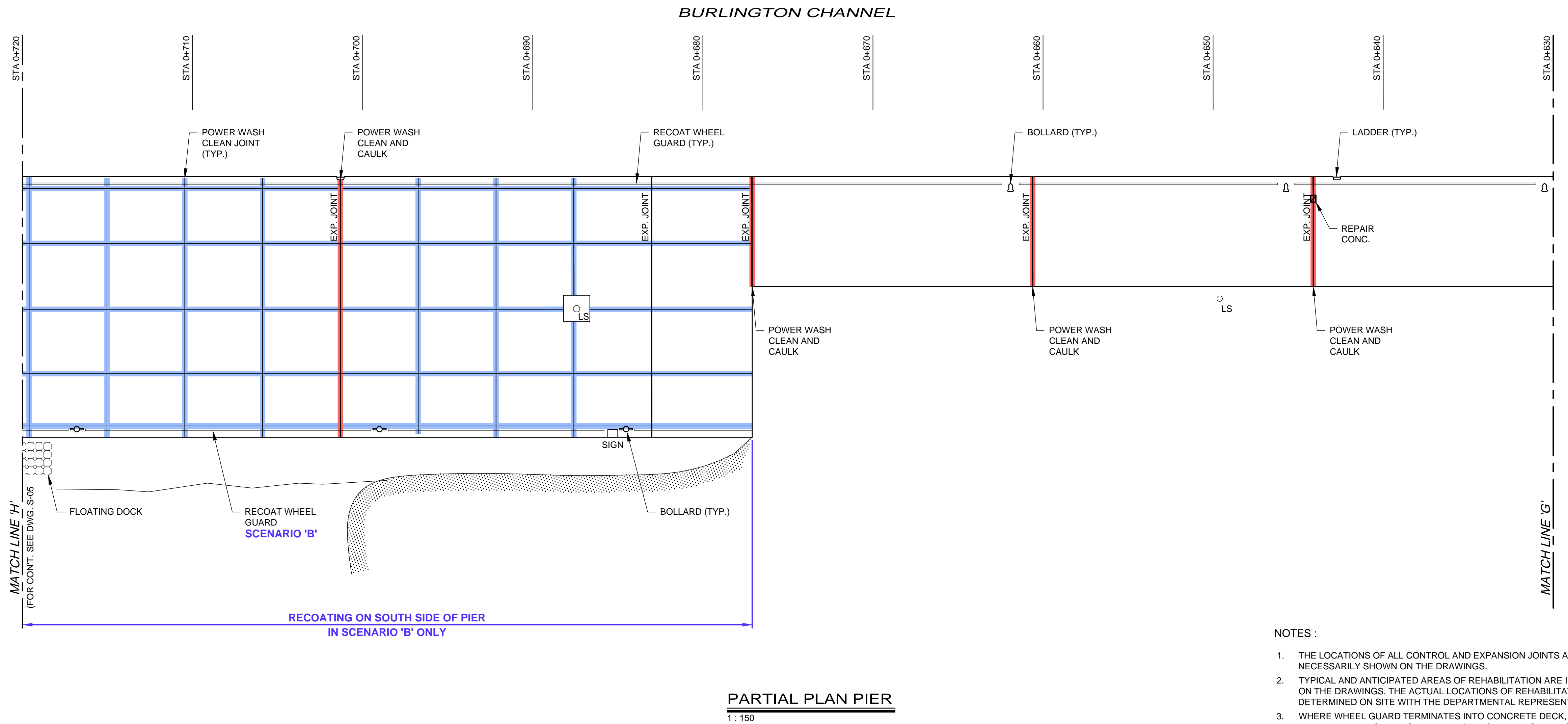
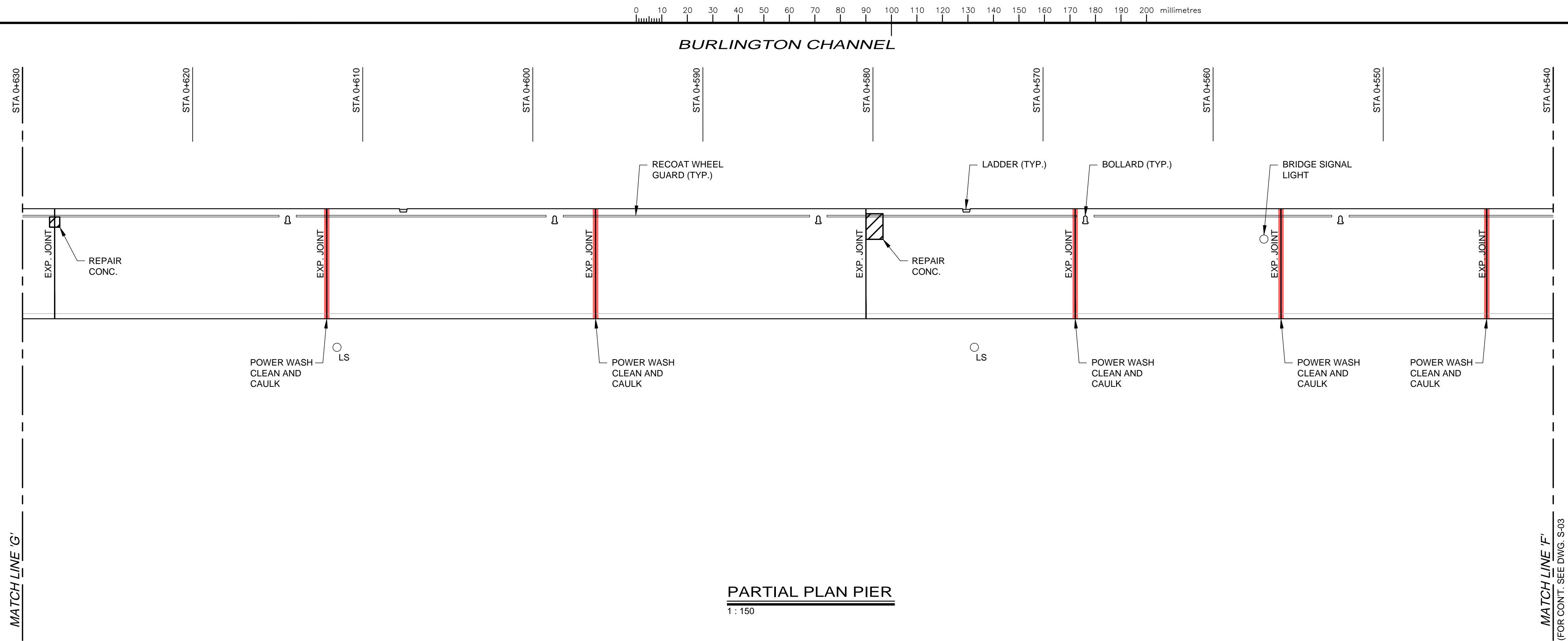
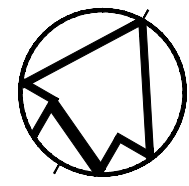
bid
offre
S.K.

project manager
administrateur
de projets

project date
date du projet
2019-10-11

project no.
no. du projet
R.106016.001

drawing no.
dessiné no.
S-05



NOTES :

- THE LOCATIONS OF ALL CONTROL AND EXPANSION JOINTS ARE NOT NECESSARILY SHOWN ON THE DRAWINGS.
- TYPICAL AND ANTICIPATED AREAS OF REHABILITATION ARE INDICATED ON THE DRAWINGS. THE ACTUAL LOCATIONS OF REHABILITATION TO BE DETERMINED ON SITE WITH THE DEPARTMENTAL REPRESENTATIVE.
- WHERE WHEEL GUARD TERMINATES INTO CONCRETE DECK, CUT RAIL IMMEDIATELY ABOVE DECK AT BEND (TYPICAL ALL BOLLARDS). SEE POSSIBLE DETAIL ON DRAWING S-08.



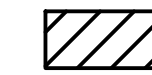
Public Works and
Government Services Canada
Travaux publics et
Services gouvernementaux Canada

AECOM

London, Ontario
519.673.0510
PN No. : 60612416

THIS DRAWING HAS BEEN PREPARED FOR USE OF AECOM'S CLIENT AND MAY NOT BE USED, REPRODUCED OR RELIED UPON BY THIRD PARTIES, EXCEPT AS AGREED BY AECOM AND ITS CLIENT, AS REQUIRED BY LAW OR FOR USE BY GOVERNMENTAL REVIEWING AGENCIES. AECOM ACCEPTS NO RESPONSIBILITY, AND DENIES ANY LIABILITY WHATSOEVER, TO ANY PARTY THAT MODIFIES THIS DRAWING WITHOUT AECOM'S EXPRESS WRITTEN CONSENT. DO NOT SCALE THIS DOCUMENT. ALL MEASUREMENTS MUST BE OBTAINED FROM STATED DIMENSIONS.

LEGEND:



CONCRETE REPAIRS



POWER WASH CLEAN AND
CAULK

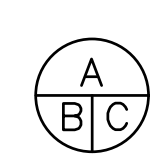


POWER WASH CLEAN



0	ISSUED FOR TENDER	2019/10/11
revision	description	date

Do not scale drawings.
Verify all dimensions and conditions on site and immediately
notify the Departmental Representative of all discrepancies.



- A Detail No.
No. du détail
drawing no. - where detail required
dessin no. - où détail exigé
B
C drawing no. - where detailed
dessin no. - où détaillé

project title
titre du projet
BURLINGTON Ontario
BURLINGTON CHANNEL
SOUTH PIER REPAIRS

drawing title
titre du dessin
PLAN - PIER REHABILITATION
STA. 0+540 TO STA. 0+720

drawn by
dessiné par
T.G.

designed by
conç par
K.C.

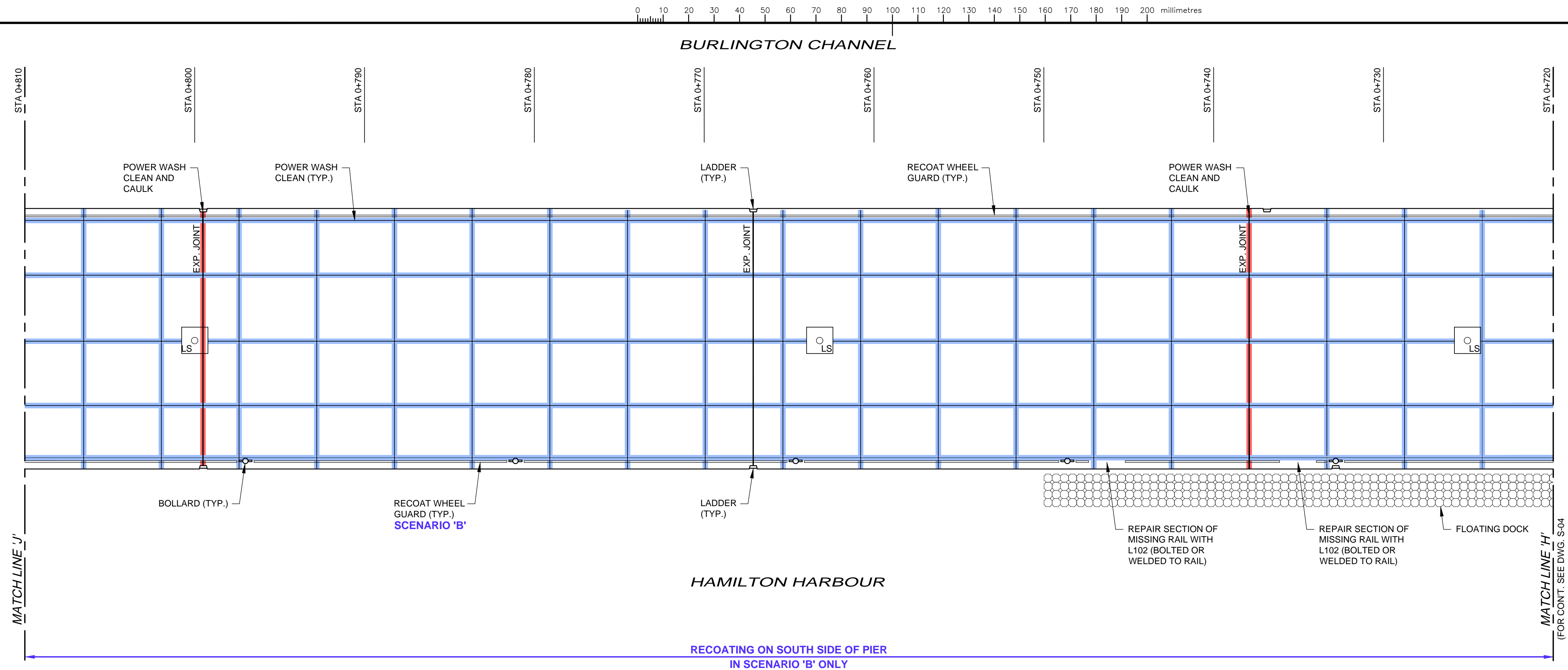
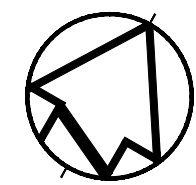
approved by
approuvé par
J.P.

bid
offre
S.K.

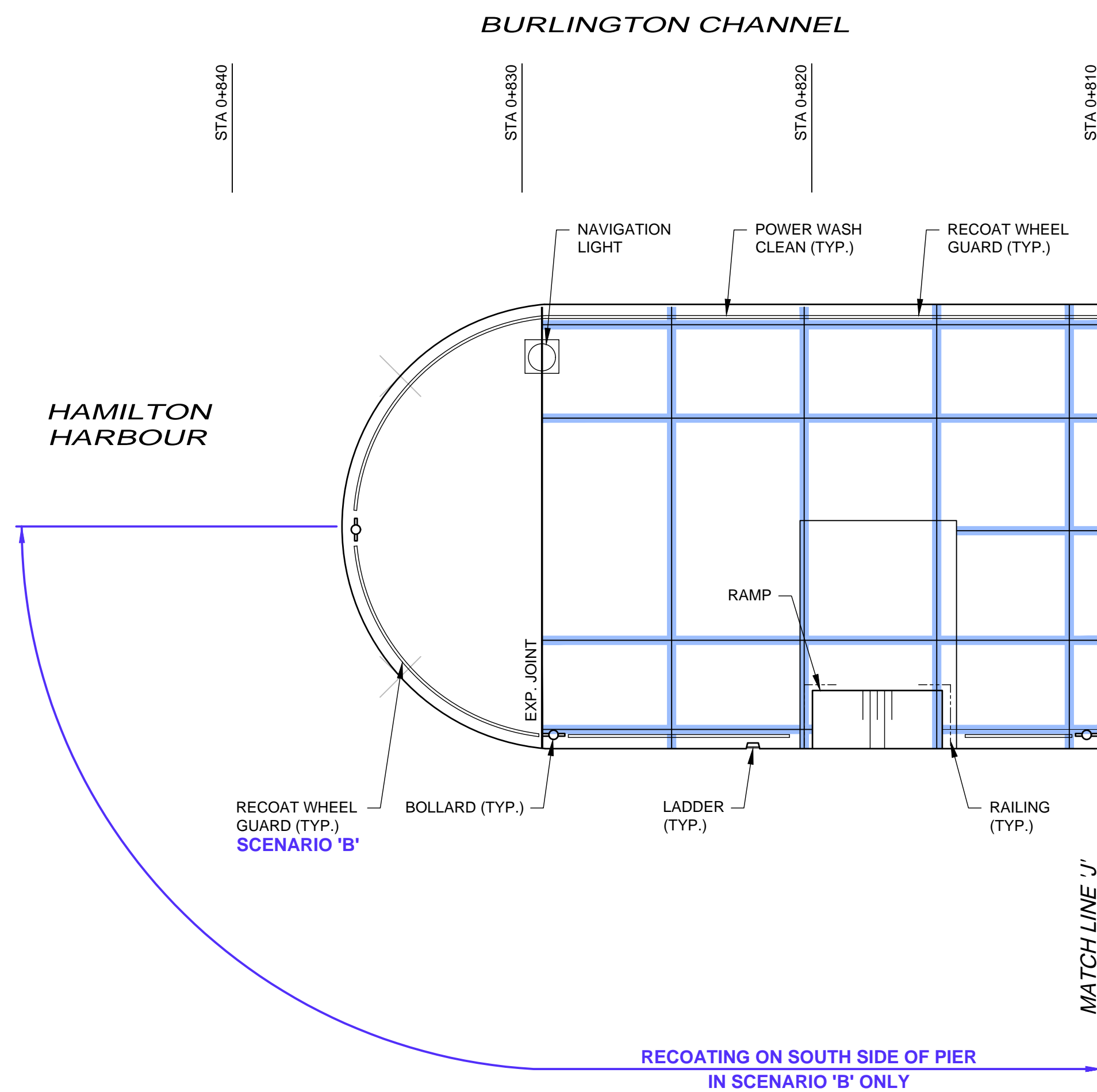
project date
date du projet
2019-10-11

project no.
no. du projet
R.106016.001

drawing no.
dessiné no.
S-06

**PARTIAL PLAN PIER**

1 : 150

**PARTIAL PLAN PIER**

1 : 150

NOTES :

1. THE LOCATIONS OF ALL CONTROL AND EXPANSION JOINTS ARE NOT NECESSARILY SHOWN ON THE DRAWINGS.
2. TYPICAL AND ANTICIPATED AREAS OF REHABILITATION ARE INDICATED ON THE DRAWINGS. THE ACTUAL LOCATIONS OF REHABILITATION TO BE DETERMINED ON SITE WITH THE DEPARTMENTAL REPRESENTATIVE.
3. WHERE WHEEL GUARD TERMINATES INTO CONCRETE DECK, CUT RAIL IMMEDIATELY ABOVE DECK AT BEND (TYPICAL ALL BOLLARDS). SEE POSSIBLE DETAIL ON DRAWING S-08.



Public Works and
Government Services Canada
Travaux publics et
Services gouvernementaux Canada

AECOM

London, Ontario
519.673.0510
PN No. : 60612416

THIS DRAWING HAS BEEN PREPARED FOR USE OF AECOM'S CLIENT AND MAY NOT BE USED, REPRODUCED OR RELIED UPON BY THIRD PARTIES, EXCEPT AS AGREED BY AECOM AND ITS CLIENT, AS REQUIRED BY LAW OR FOR USE BY GOVERNMENTAL REVIEWING AGENCIES. AECOM ACCEPTS NO RESPONSIBILITY, AND DENIES ANY LIABILITY WHATSOEVER, TO ANY PARTY THAT MODIFIES THIS DRAWING WITHOUT AECOM'S EXPRESS WRITTEN CONSENT. DO NOT SCALE THIS DOCUMENT. ALL MEASUREMENTS MUST BE OBTAINED FROM STATED DIMENSIONS.

LEGEND:

- POWER WASH CLEAN AND CAULK
POWER WASH CLEAN



0	ISSUED FOR TENDER	2019/10/11
revision	description	date

Do not scale drawings.
Verify all dimensions and conditions on site and immediately notify the Departmental Representative of all discrepancies.

- A Detail No.
No. du détail
B drawing no. - where detail required
dessin no. - où détail exigé
C drawing no. - where detailed
dessin no. - où détaillé

project title
titre du projet
BURLINGTON Ontario
BURLINGTON CHANNEL
SOUTH PIER REPAIRS

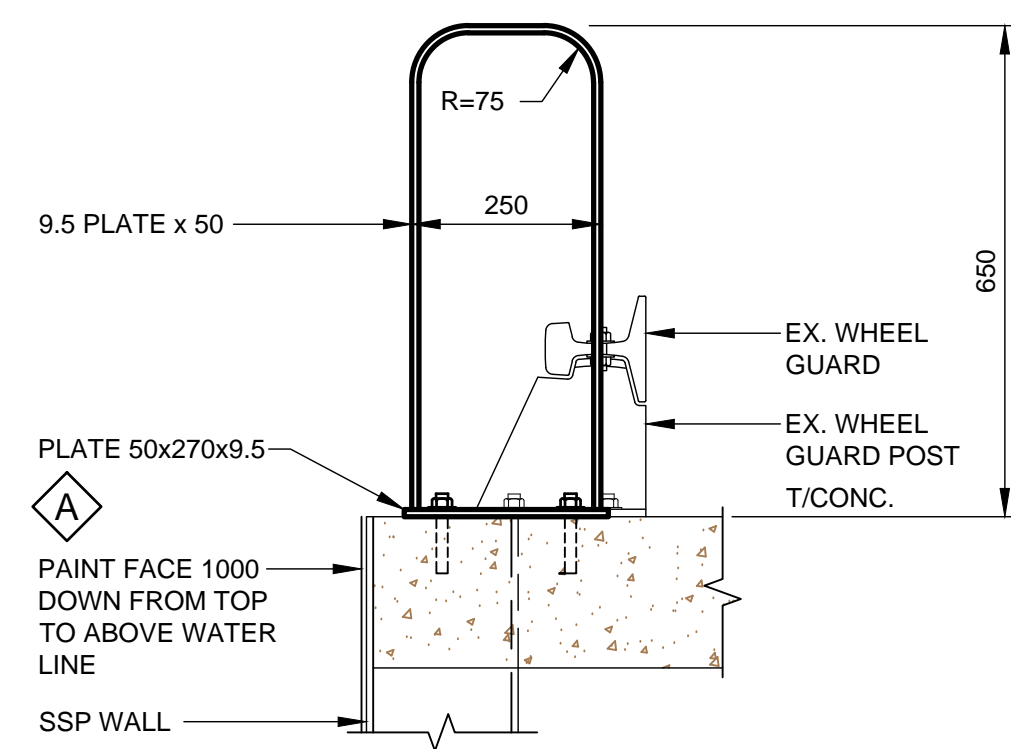
drawing title
titre du dessin
PLAN - PIER REHABILITATION
STA. 0+720 TO STA. 0+840

drawn by dessiné par	T.G.
designed by conçu par	K.C.
approved by approuvé par	J.P.
bid offre	S.K.
project manager administrateur de projets	

project date
date du projet
2019-10-11

project no.
no. du projet
R.106016.001

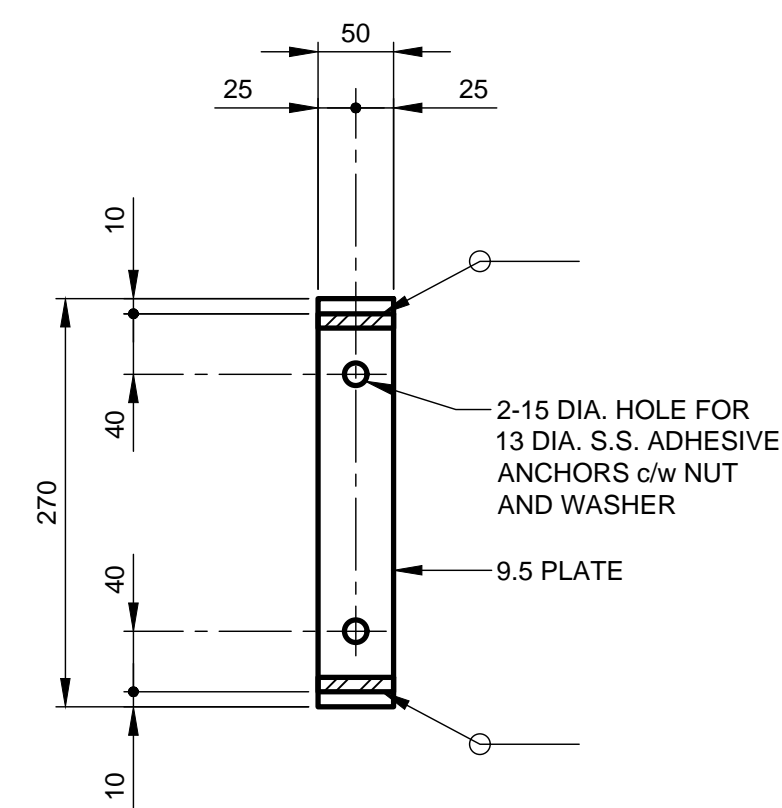
drawing no.
dessiné no.
S-07



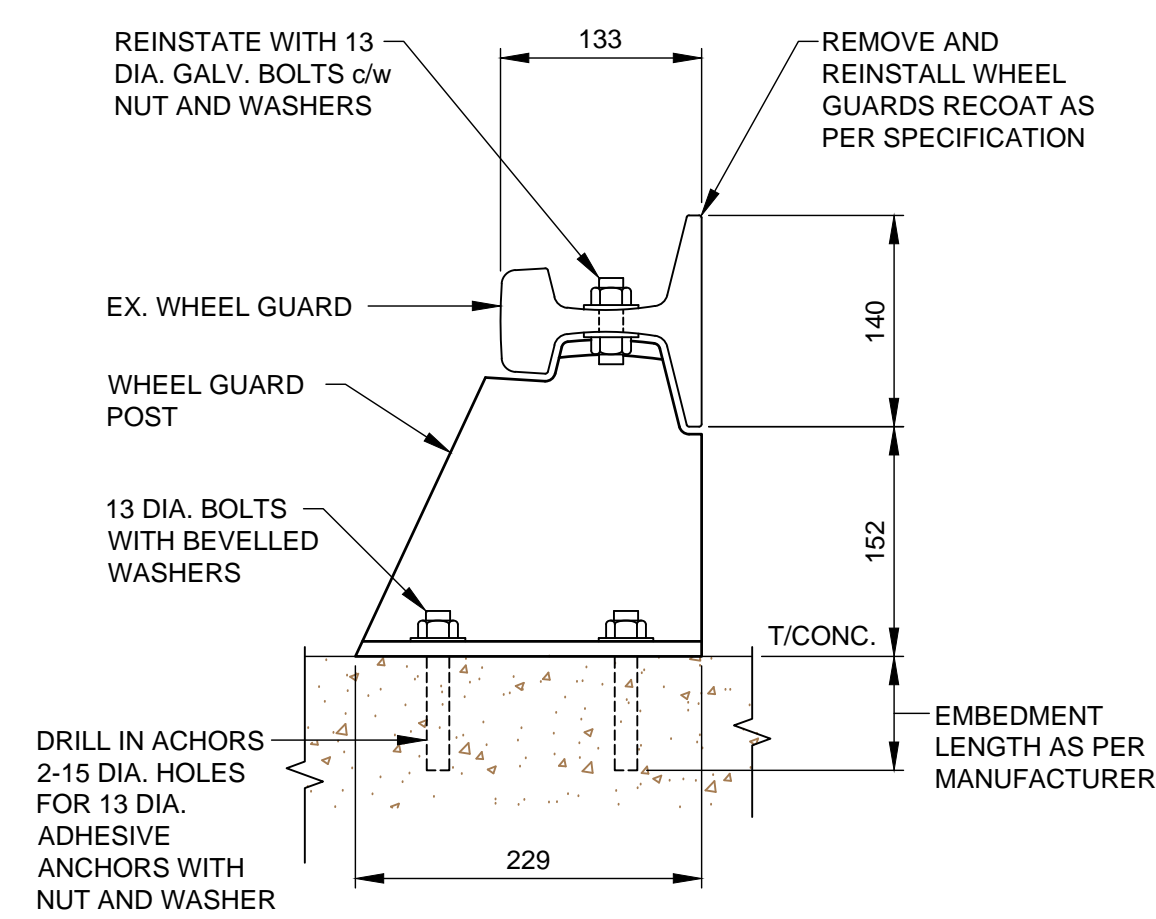
1 SECTION
1 : 10

PLAN

1 : 10



1 : 5



WHEEL GUARD DETAIL

1 : 5

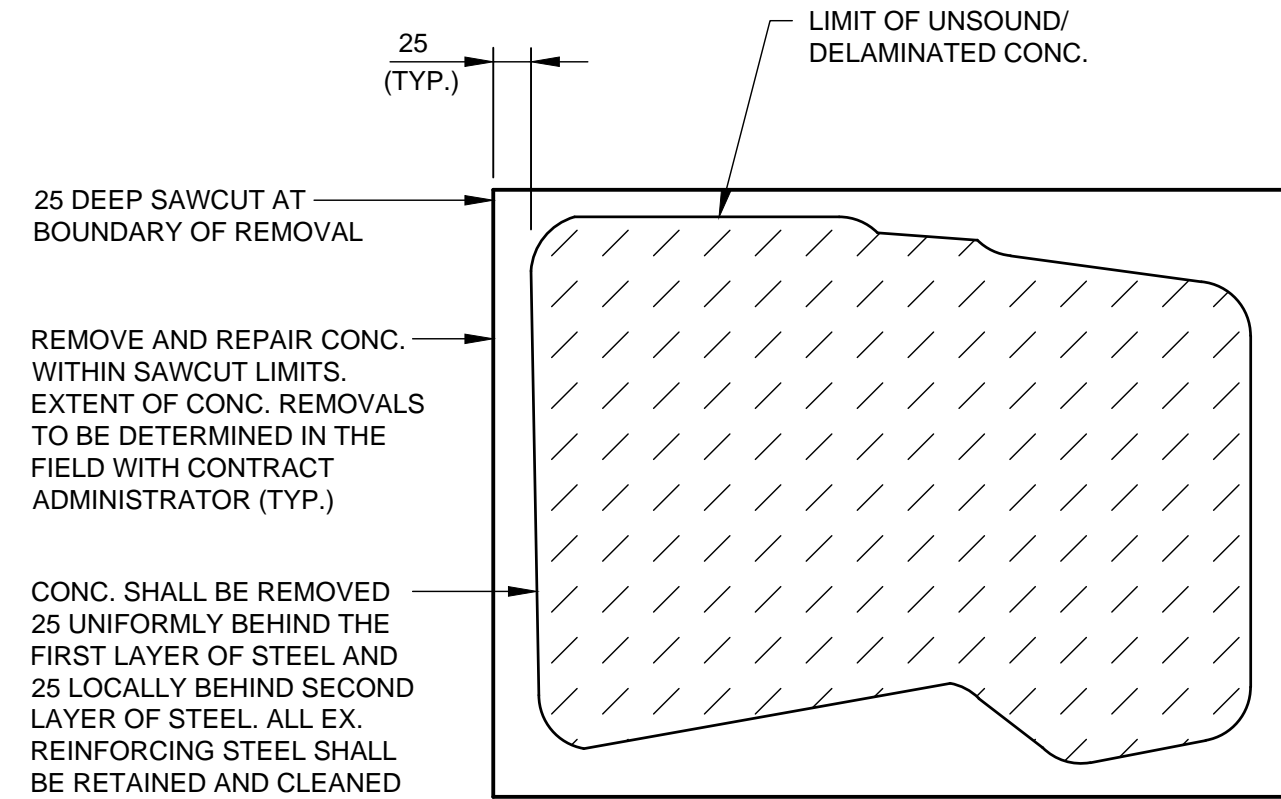


WHEEL GUARD—

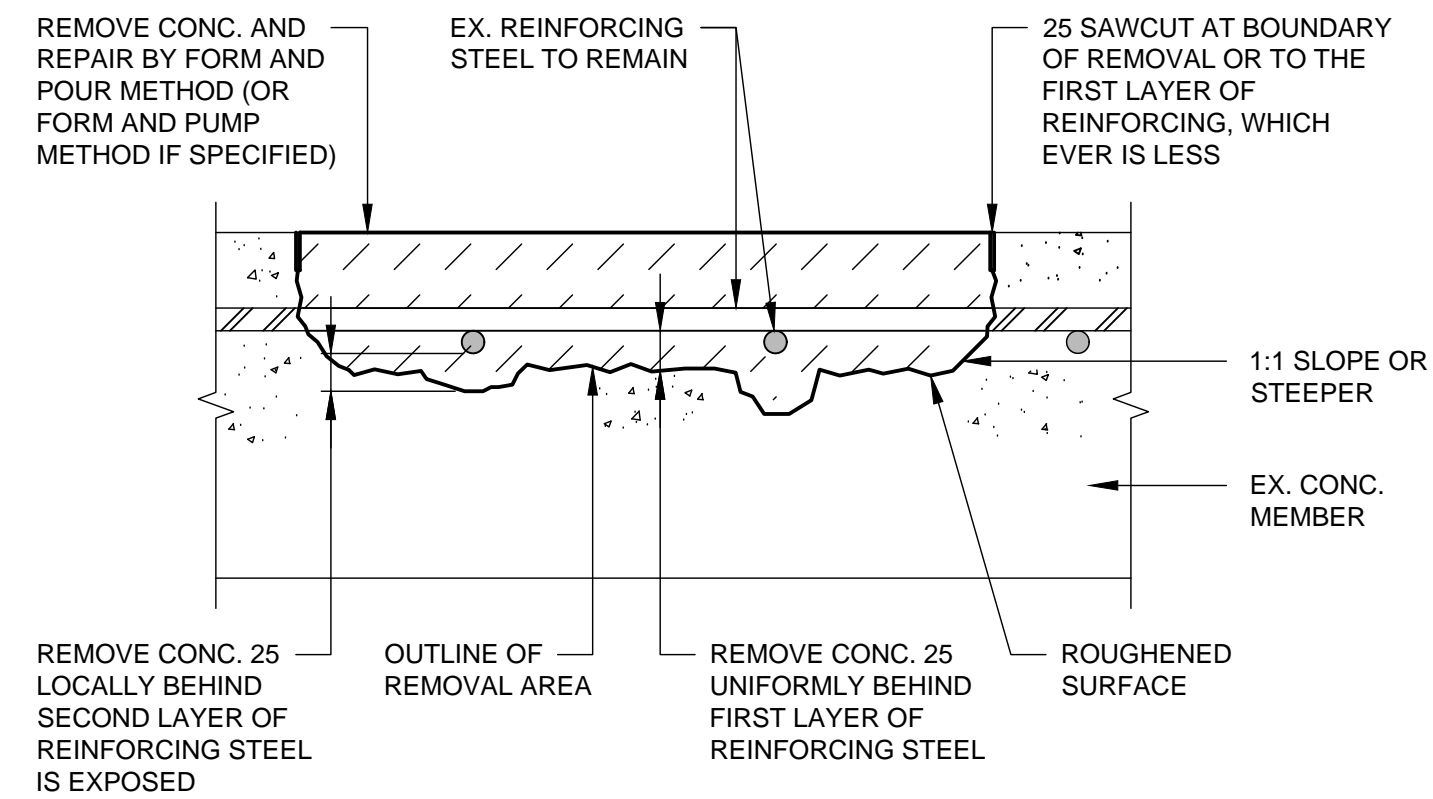
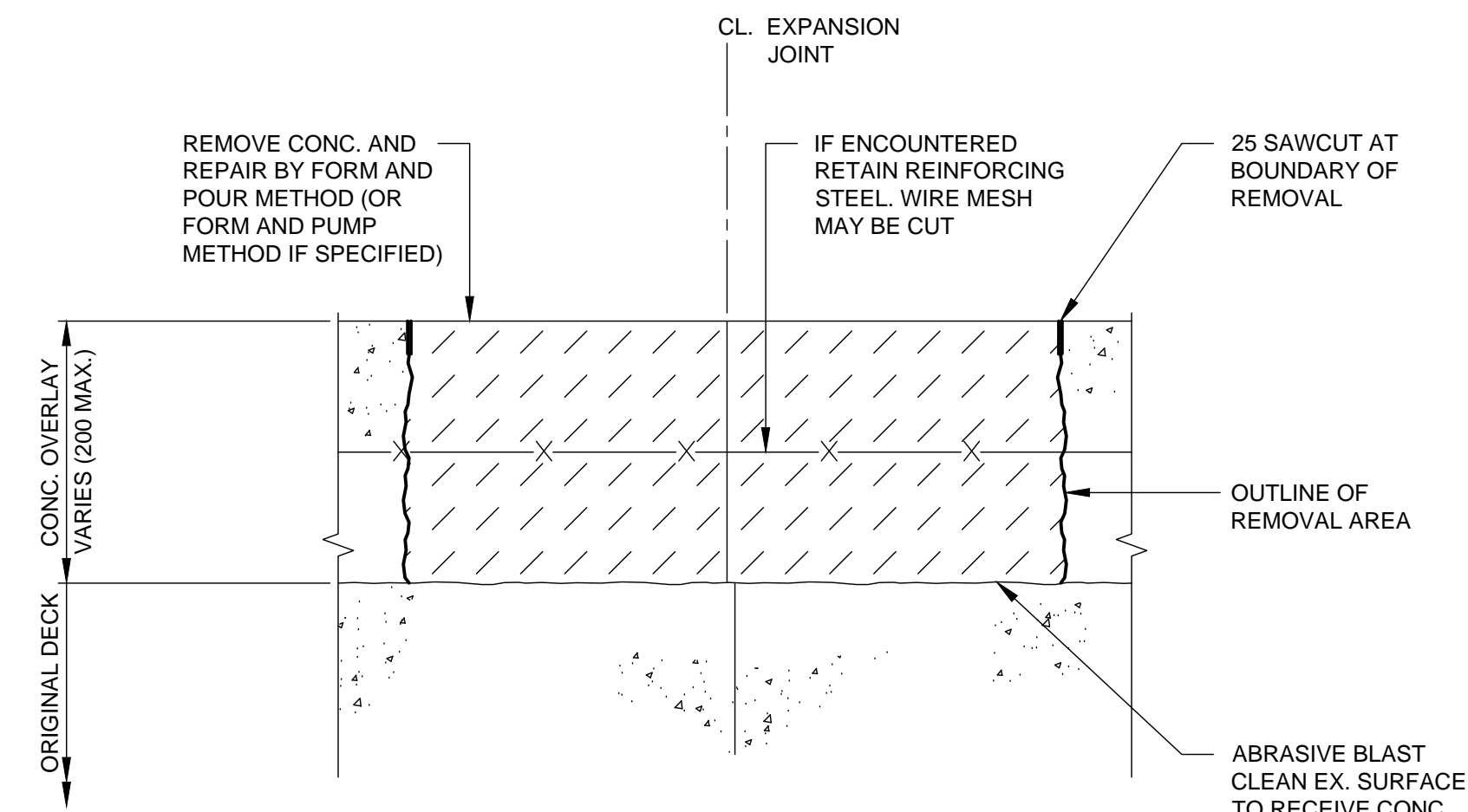
LADDER PICTURES

PHOTO 3 - STA. 0+733

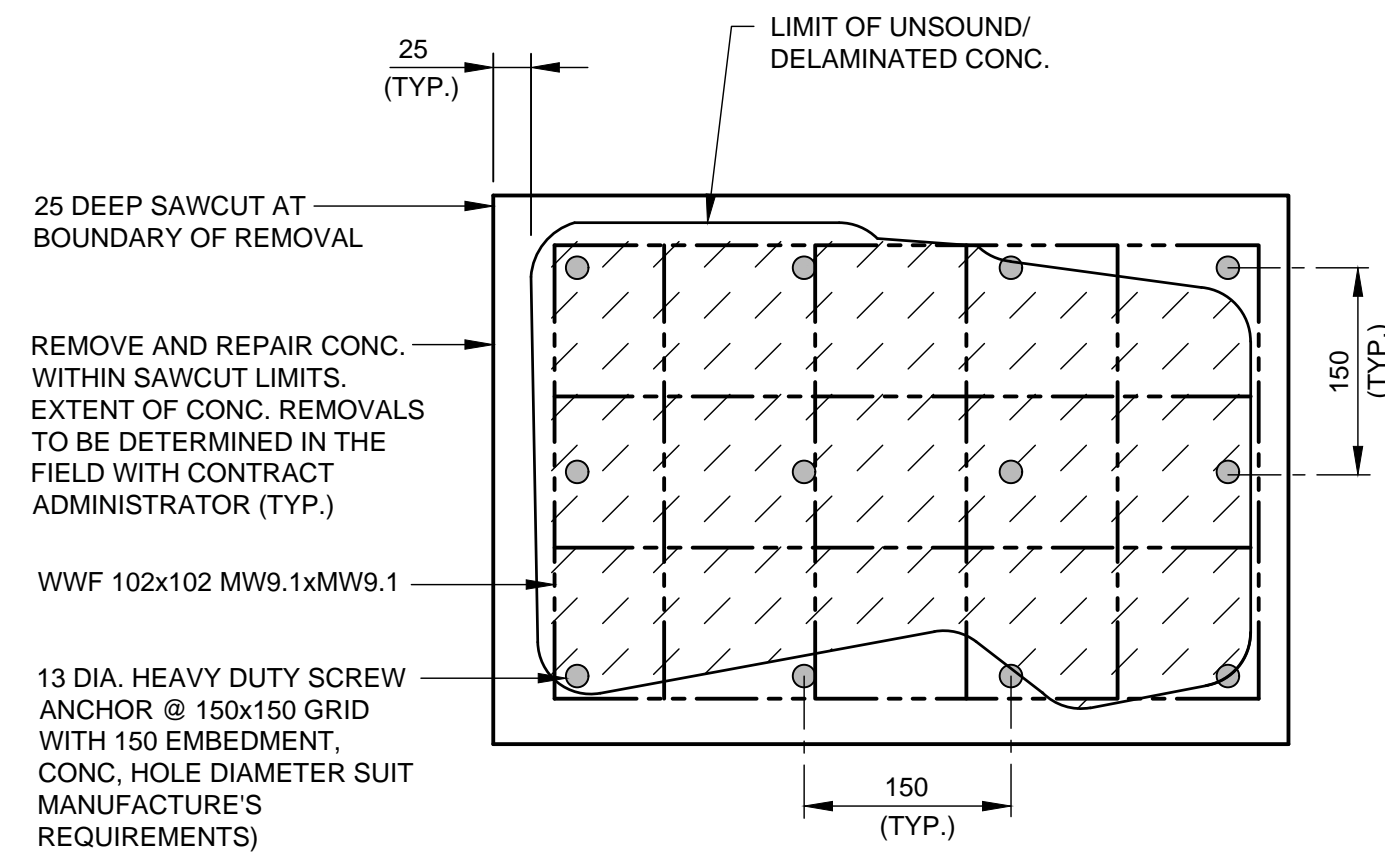
BURLINGTON CHANNEL SIDE			
STATION	STATION	STATION	SCENARIO
STA. 0+141	STA. 0+185	STA. 0+232	'A' + 'B'
STA. 0+278	STA. 0+323	STA. 0+369	'A' + 'B'
STA. 0+415	STA. 0+468	STA. 0+503	'A' + 'B'
STA. 0+539	STA. 0+575	STA. 0+607	'A' + 'B'
STA. 0+643	STA. 0+702	STA. 0+734	'A' + 'B'
STA. 0+767	STA. 0+799		'A' + 'B'
HAMILTON HARBOUR SIDE			
STA. 0+734	STA. 0+767	STA. 0+799	'B' ONLY
STA. 0+821			'B' ONLY



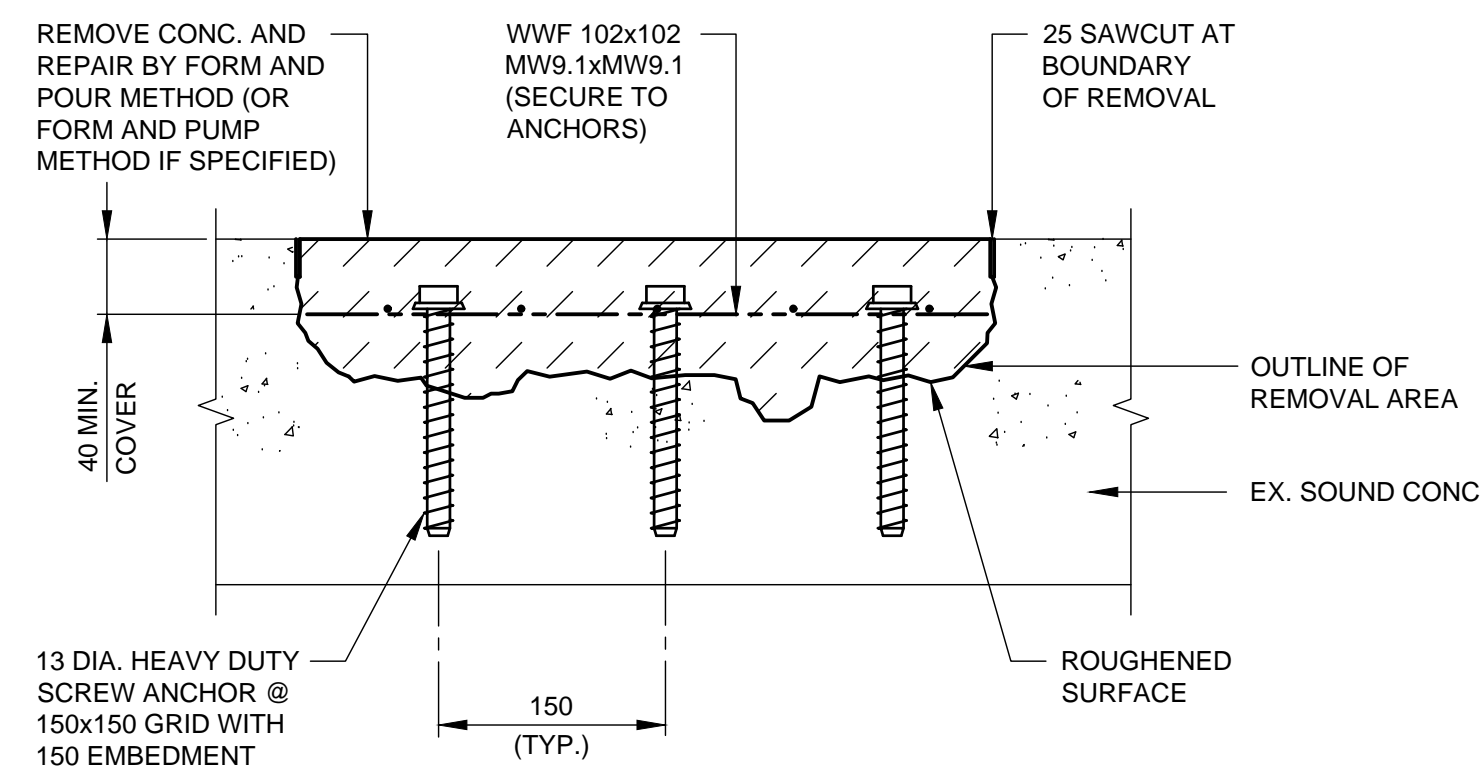
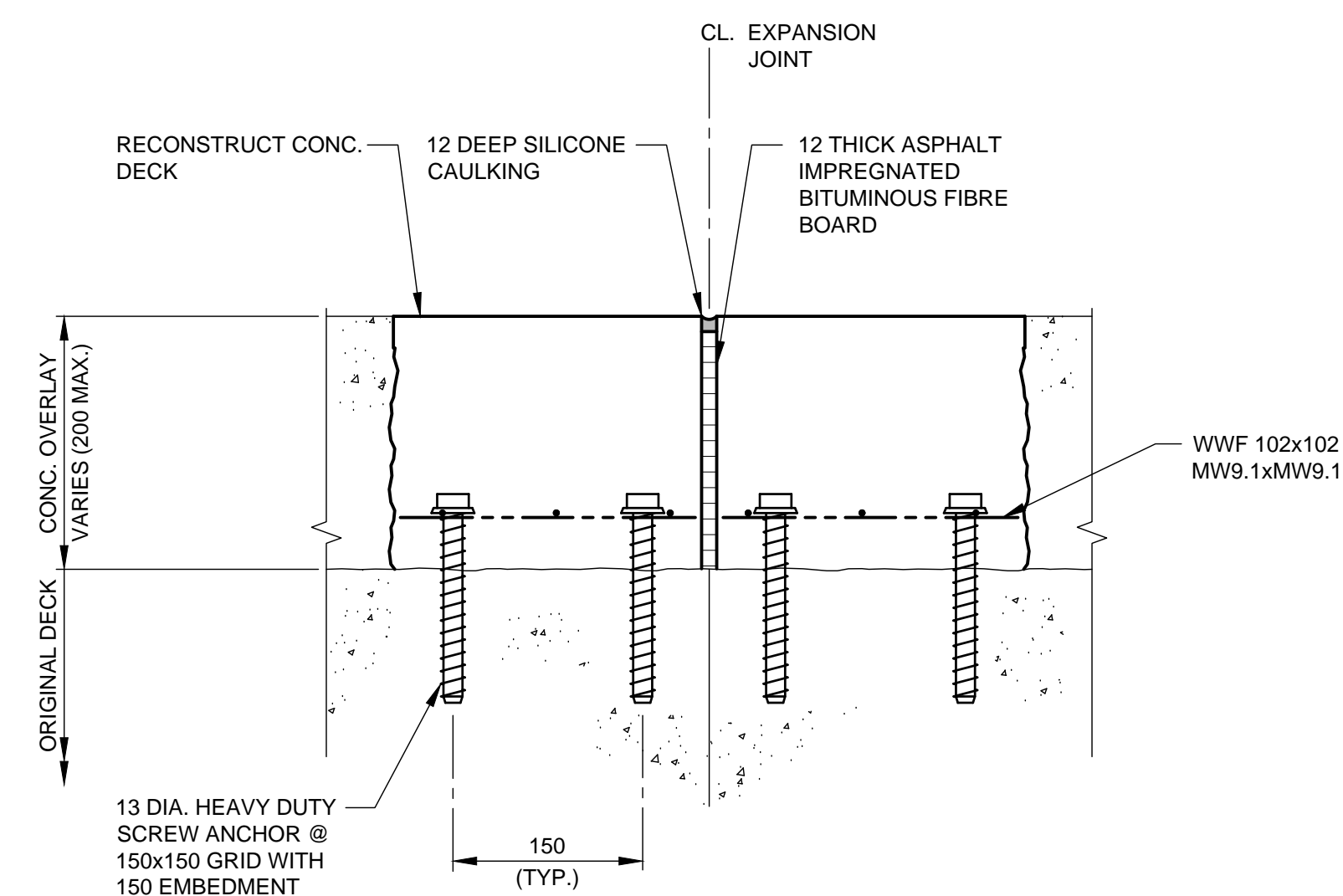
PLAN

HORIZONTAL SURFACE
REMOVAL/REPAIR DETAIL

EXISTING AND REMOVALS



PLAN

HORIZONTAL SURFACE
REMOVAL/REPAIR DETAIL

REHABILITATED

CONCRETE REPAIR WITHOUT EXISTING REINFORCING STEEL

N.T.S.

CONCRETE REPAIR AT EXPANSION JOINT

N.T.S.

LOCATION OF BOLLARDS TO BE RECOATED

BOLLARDS								
STATION	TYPE	SCENARIO	STATION	TYPE	SCENARIO	STATION	TYPE	SCENARIO
STA. 0+145	TEE	'A' + 'B'	STA. 0+505	TEE	'A' + 'B'	STA. 0+685	SINGLE CROSS	'B' ONLY
STA. 0+175	TEE	'A' + 'B'	STA. 0+520	TEE	'A' + 'B'	STA. 0+700	SINGLE CROSS	'B' ONLY
STA. 0+206	TEE	'A' + 'B'	STA. 0+535	TEE	'A' + 'B'	STA. 0+716	SINGLE CROSS	'B' ONLY
STA. 0+236	TEE	'A' + 'B'	STA. 0+553	TEE	'A' + 'B'	STA. 0+733	SINGLE CROSS	'B' ONLY
STA. 0+270	TEE	'A' + 'B'	STA. 0+567	TEE	'A' + 'B'	STA. 0+750	SINGLE CROSS	'B' ONLY
STA. 0+300	TEE	'A' + 'B'	STA. 0+583	TEE	'A' + 'B'	STA. 0+765	SINGLE CROSS	'B' ONLY
STA. 0+330	TEE	'A' + 'B'	STA. 0+600	TEE	'A' + 'B'	STA. 0+780	SINGLE CROSS	'B' ONLY
STA. 0+360	TEE	'A' + 'B'	STA. 0+615	TEE	'A' + 'B'	STA. 0+795	SINGLE CROSS	'B' ONLY
STA. 0+390	TEE	'A' + 'B'	STA. 0+630	TEE	'A' + 'B'	STA. 0+810	SINGLE CROSS	'B' ONLY
STA. 0+420	TEE	'A' + 'B'	STA. 0+645	TEE	'A' + 'B'	STA. 0+830	SINGLE CROSS	'B' ONLY
STA. 0+465	TEE	'A' + 'B'	STA. 0+662	TEE	'A' + 'B'	STA. 0+835	LARGE SINGLE CROSS	'A' + 'B'

REPAIR NOTES :

- TYPICAL LOCATIONS AND AREAS OF REPAIR ARE INDICATED ON DRAWINGS. THE ACTUAL LOCATIONS, TYPE AND EXTENT OF REMOVAL WILL BE DETERMINED ON SITE WITH THE DEPARTMENTAL REPRESENTATIVE.
- REPAIR TO ORIGINAL SURFACE, UNLESS OTHERWISE INSTRUCTED BY THE CONTRACT ADMINISTRATOR.
- CONCRETE REMOVALS SHALL BE BASED ON A VISUAL AND DELAMINATION SURVEY.
- RETAIN REINFORCING STEEL AND ABRASIVE BLAST CLEAN ALL SURFACES.



Public Works and
Government Services Canada
Travaux publics et
Services gouvernementaux Canada

AECOM

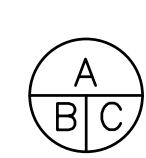
London, Ontario
519.673.0510
PN No. : 60612416

THIS DRAWING HAS BEEN PREPARED FOR USE OF AECOM'S CLIENT AND MAY NOT BE USED, REPRODUCED OR RELIED UPON BY THIRD PARTIES, EXCEPT AS AGREED BY AECOM AND ITS CLIENT, AS REQUIRED BY LAW OR FOR USE BY GOVERNMENTAL REVIEWING AGENCIES. AECOM ACCEPTS NO RESPONSIBILITY, AND DENIES ANY LIABILITY WHATSOEVER, TO ANY PARTY THAT MODIFIES THIS DRAWING WITHOUT AECOM'S EXPRESS WRITTEN CONSENT. DO NOT SCALE THIS DOCUMENT. ALL MEASUREMENTS MUST BE OBTAINED FROM STATED DIMENSIONS.



revision	description	date
0	ISSUED FOR TENDER	2019/10/11

Do not scale drawings.
Verify all dimensions and conditions on site and immediately
notify the Departmental Representative of all discrepancies.



- A Detail No.
No. du détail
drawing no. - where detail required
dessin no. - où détail exigé
B
C
drawing no. - where detailed
dessin no. - où détaillé

project title
titre du projet
BURLINGTON
BURLINGTON CHANNEL
SOUTH PIER REPAIRS

Ontario

drawing title
titre du dessin

MISCELLANEOUS DETAILS - 2

drawn by
dessiné par

T.G.

designed by
conçue par

K.C.

approved by
approuvé par

J.P.

bid
offre

S.K.

project manager
administrateur de projets

project date
date du projet

2019-10-11

project no.
no. du projet

R.106016.001

drawing no.
dessiné no.

S-09

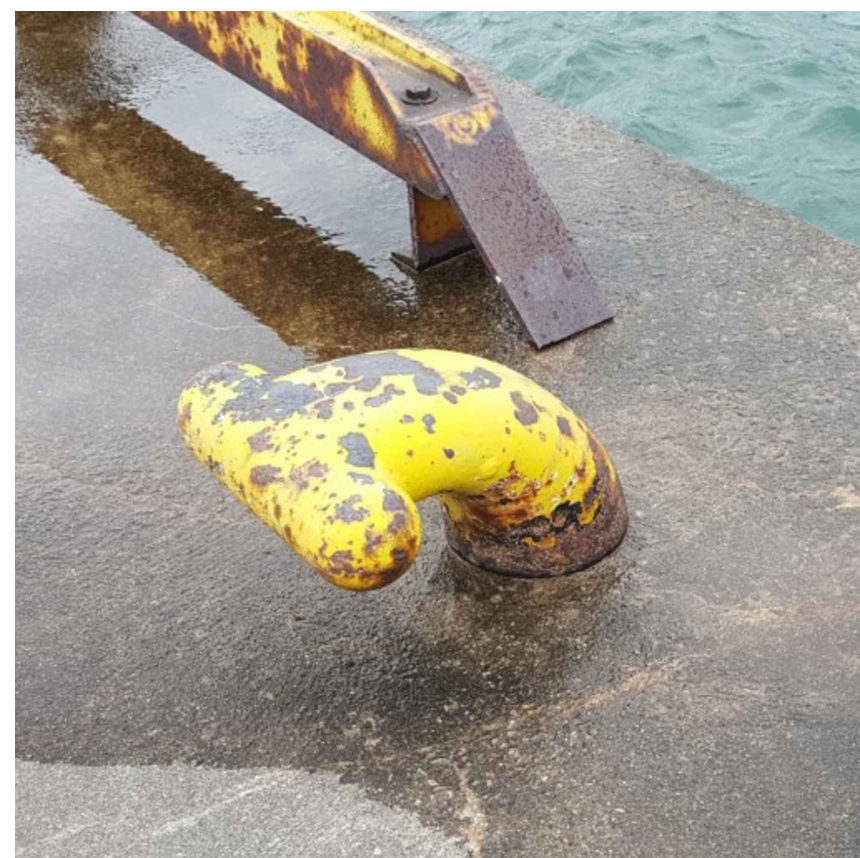


PHOTO 1 - STA. 0+145

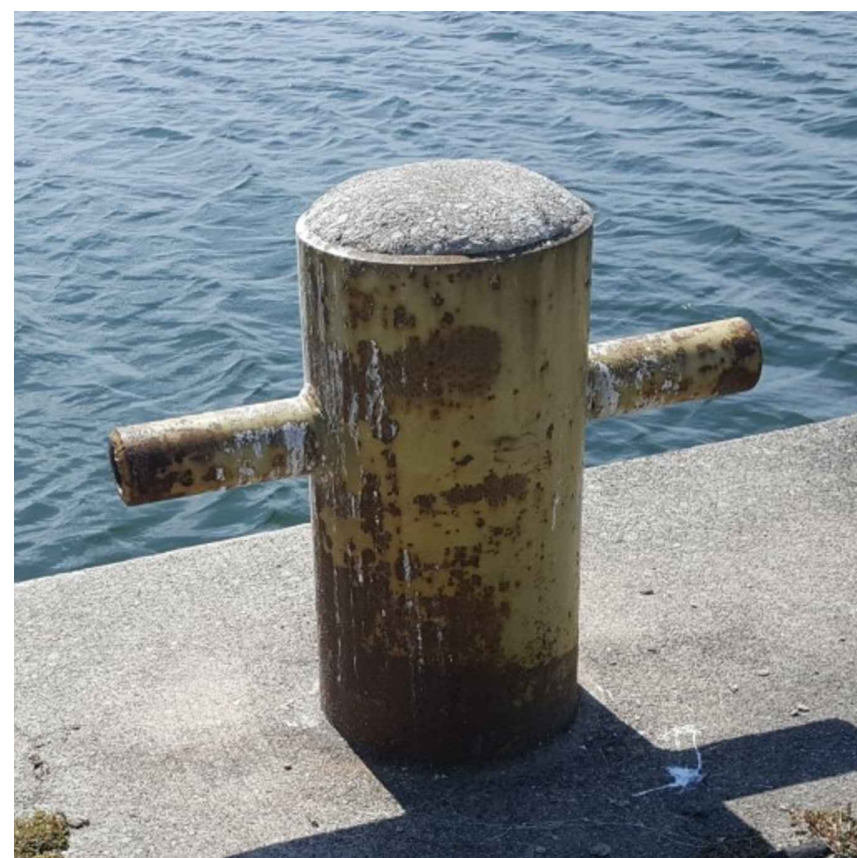


PHOTO 2 - STA. 0+811



PHOTO 3 - STA. 0+835

BOLLARD PICTURES