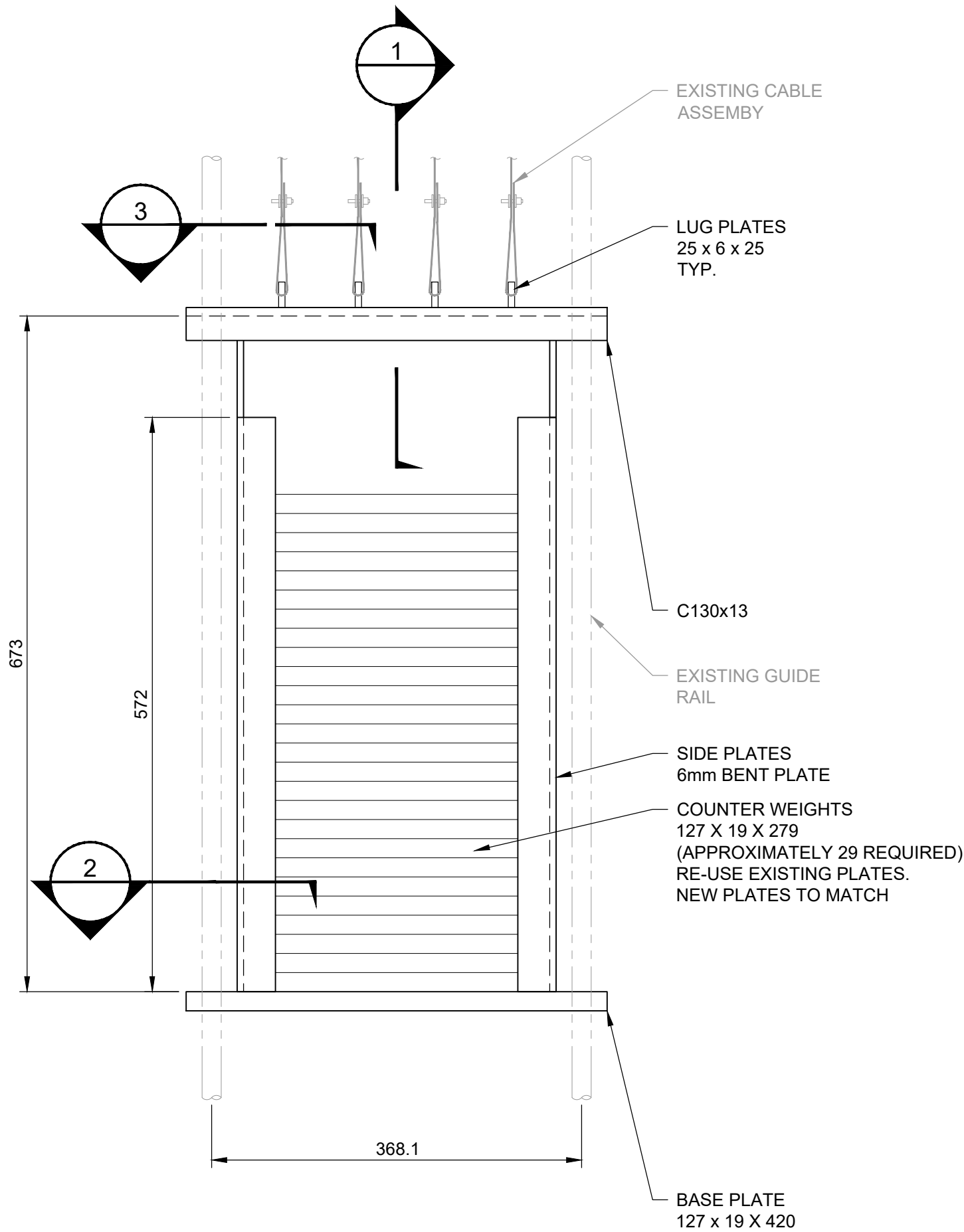
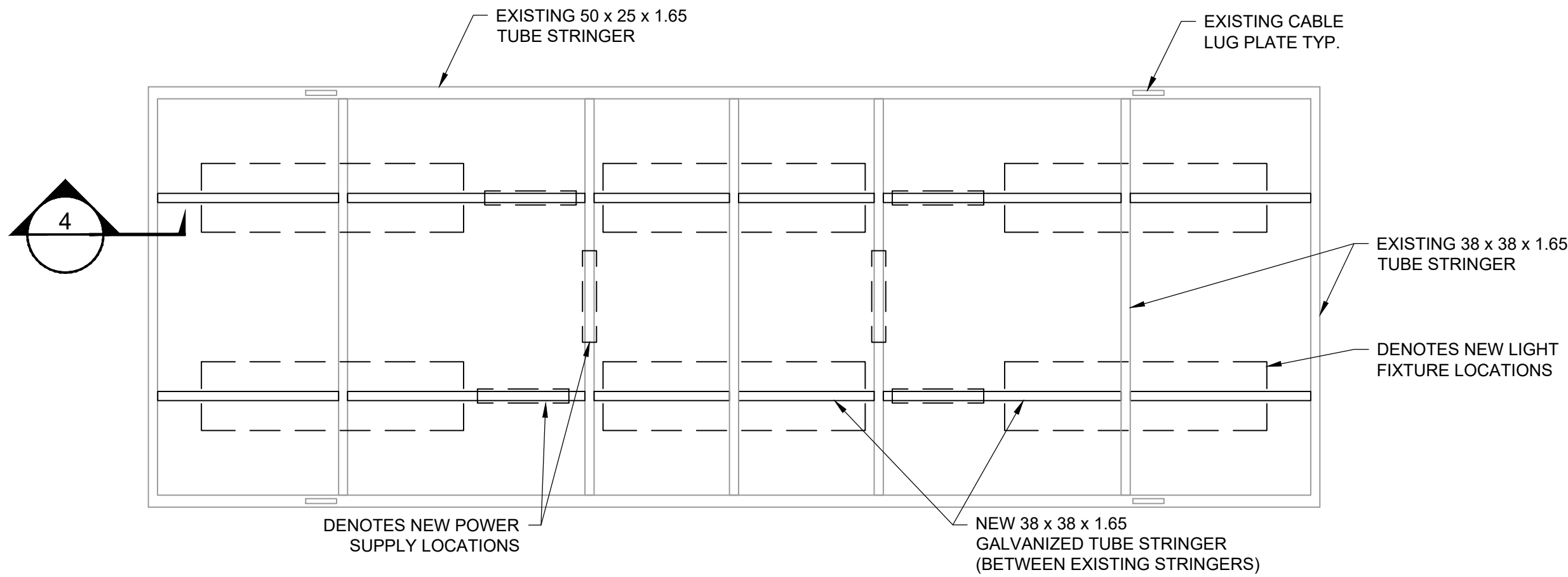


- NOTES:
- CANOPIES WITH EXISTING T5 AND LED LIGHTS HAVE APPROXIMATELY 16 EXISTING PLATES PER FRAME.
 - CANOPIES WITH EXISTING HPS LIGHTS HAVE APPROXIMATELY 8 EXISTING PLATES PER FRAME.
 - COUNTER WEIGHTS ARE STEEL MATERIAL, EACH HAVING AN ESTIMATED WEIGHT OF 5.5 KG.
 - ADJUST NUMBER OF PLATES AND FRAME TO SUIT ACTUAL LIGHT FIXTURE WEIGHTS INCLUDING ALL ACCESSORIES.



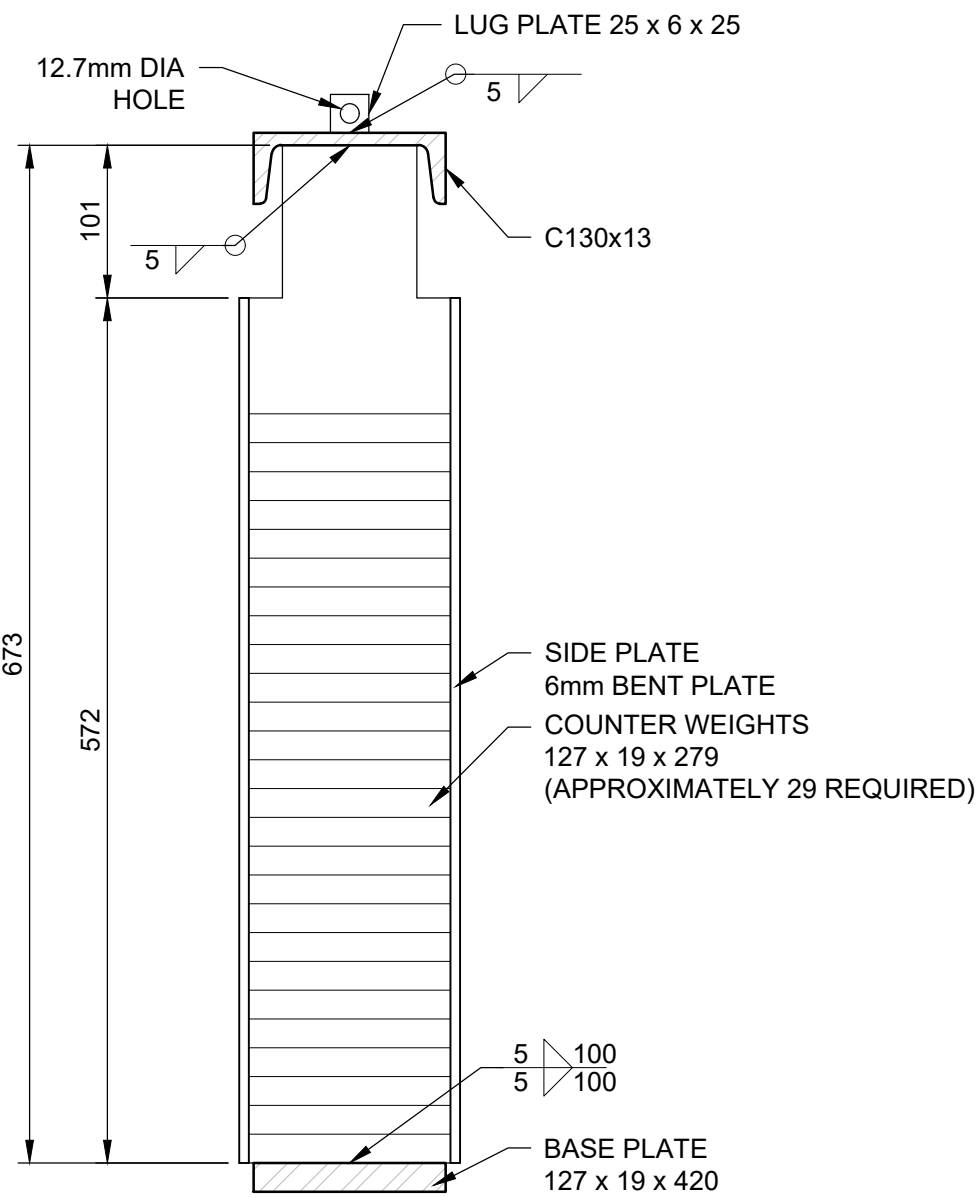
COUNTER WEIGHT FRAME ELEVATION

Scale 1:5



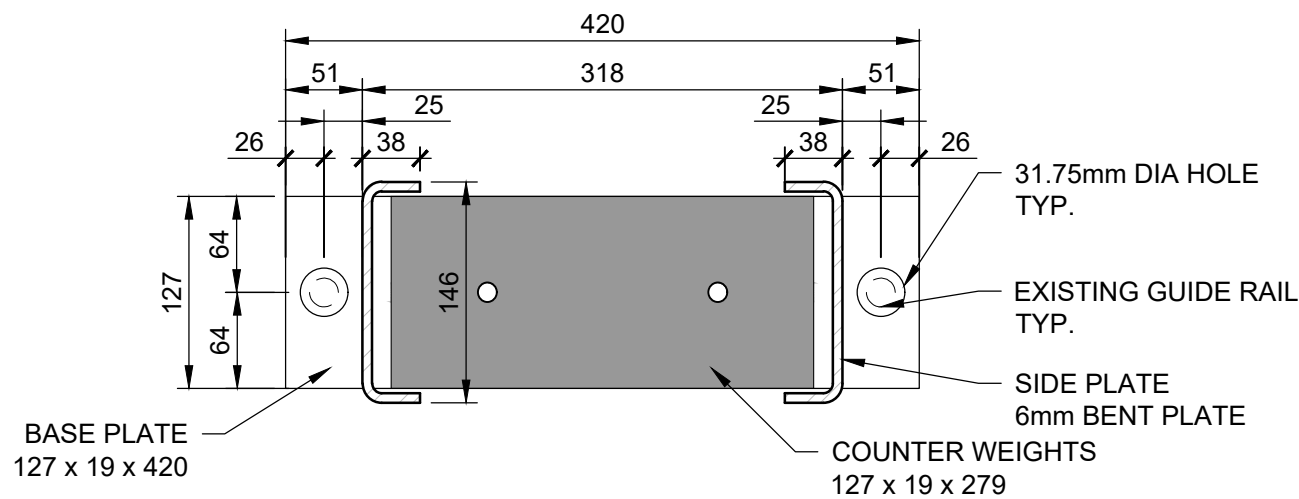
TYPICAL CANOPY FRAMING

Scale 1:20



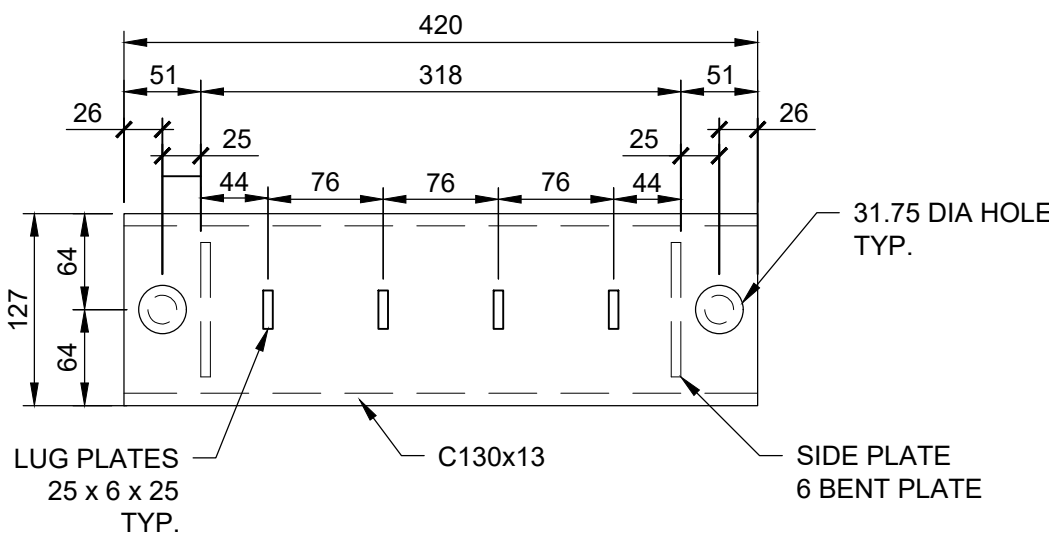
1 | SECTION

Scale 1:5



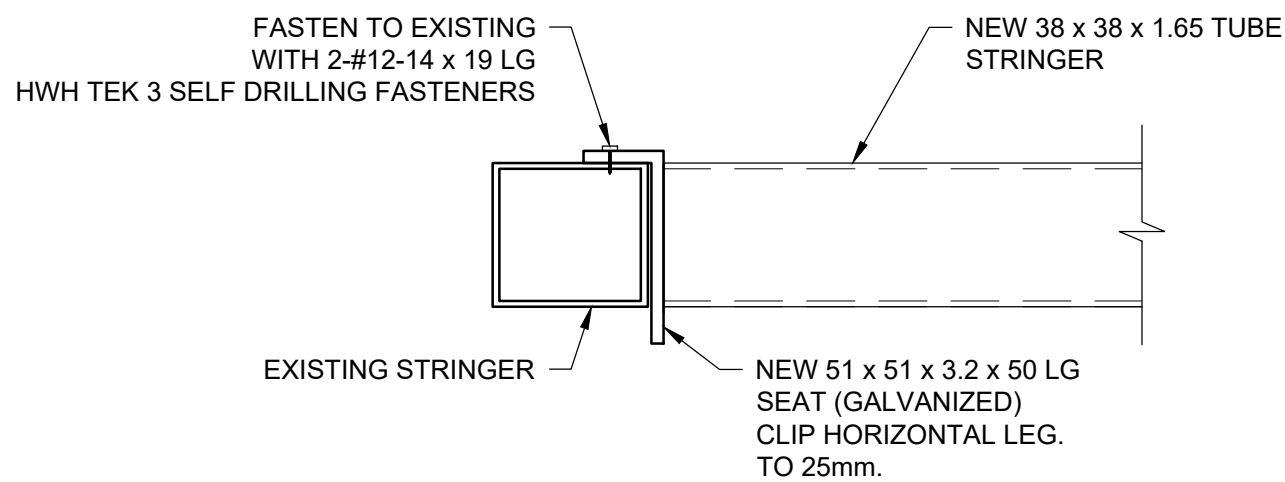
2 | SECTION

Scale 1:5



3 | PLAN

Scale 1:5



4 | DETAIL

Scale 1:2

Revision	Description	Date
3	Issued for Addendum	2019-10-28
2	Issued for Tender	2019-09-17
1	Issued For Review	2019-08-23
0	Issued For Construction	2018-08-10

Agriculture and Agri-Food
Canada (AAFC)

Project title

**AAFC Saskatoon Research and
Development Centre (SRDC)
Greenhouse LED Retrofit**
**107 Science Place, Saskatoon,
Saskatchewan, S7N 0X2**

Designed by
Cameron Klemmer

Drawn by
Tareg Shrufi

Approved by
Brent Wolfater

PWGSC Project Manager
Eric Haaland

Drawing title

**SRDC Greenhouse LED Retrofit
Electrical
Counter Weight Frame Elevation**

Project no.	Drawing no.	Revision no.
R.093894.001	E-3003	3