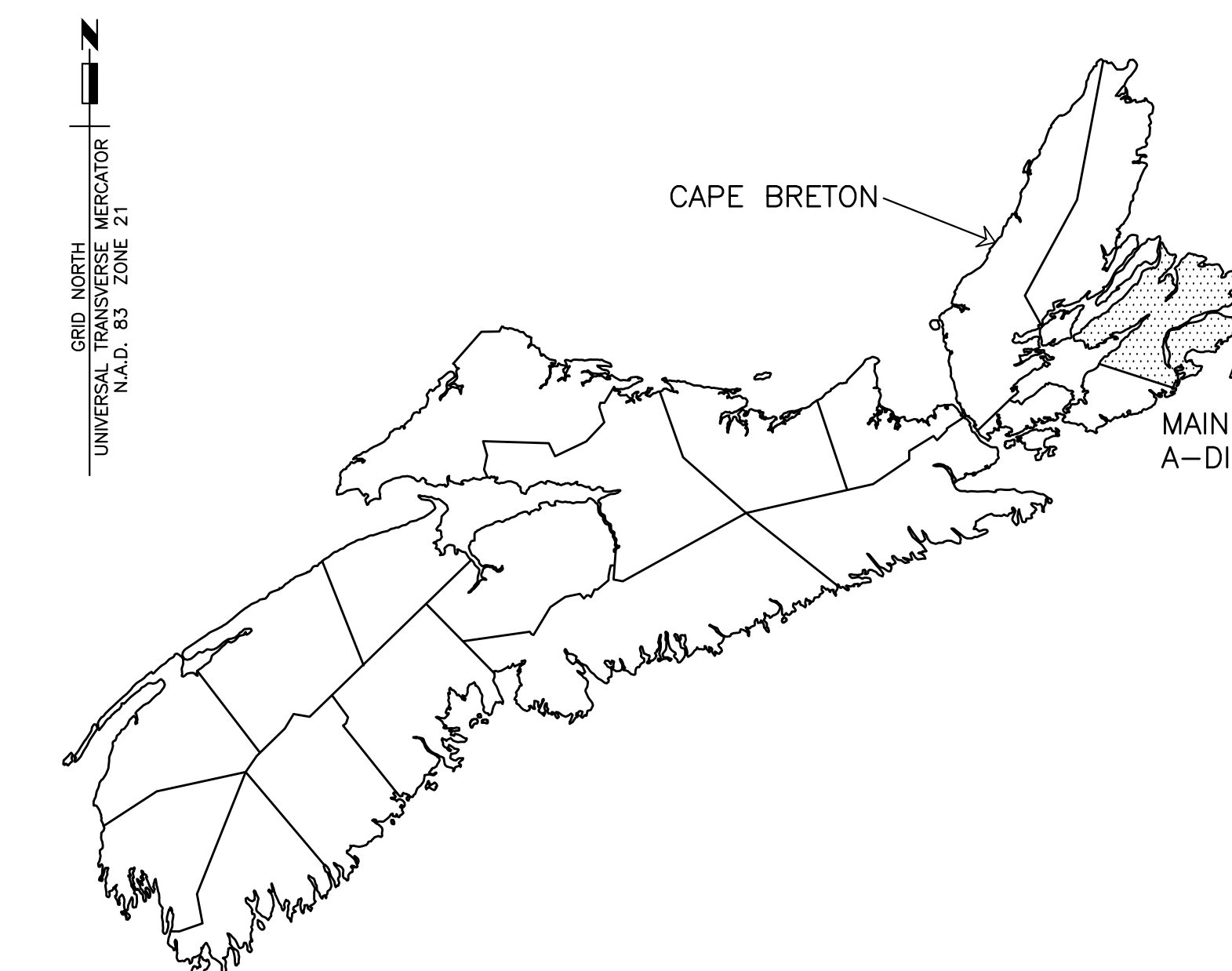


Fisheries and Oceans
Canada

Small Craft Harbours
Maritimes / Gulf Region

Pêches et Océans
Canada

Ports pour Petits Bateaux
Région des Maritimes / Golfe



MAP OF NOVA SCOTIA

FLOATING WHARVES CONSTRUCTION & INSTALLATION MAIN-A-DIEU CAPE BRETON, CO., NS

DRAWING LIST

MARINE

- M1 EXISTING SITE PLAN
- M2 PLAN OF WORK, ELEVATION OF FLOATS AND SECTION
- M3 NEW FLOATS SECTIONS AND DETAILS
- M4 CONNECTION PLATES AND ASSEMBLIES DETAILS
- M5 STANDARD FLOAT PLAN VIEW, ELEVATIONS, SECTIONS AND DETAILS
- M6 FLOAT #5 PLAN VIEW, ELEVATIONS, SECTIONS AND DETAILS

PROJECT NO. 723078

ISSUED FOR TENDER NOV 1, 2019

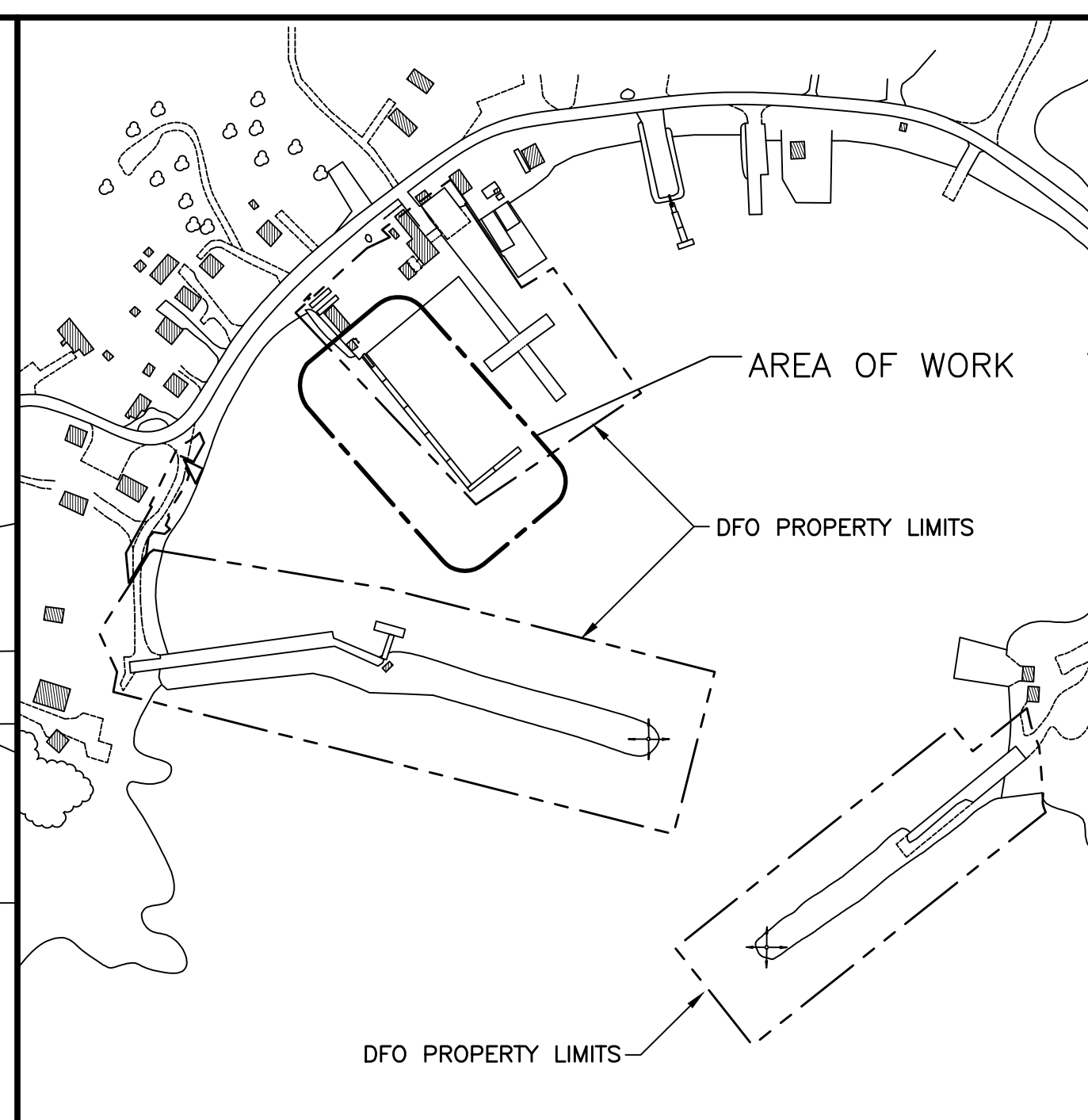


GRID NORTH
UNIVERSAL
M.A.D. 83 ZONE 21



EXISTING SITE PLAN

SCALE : 1:500
0m 10m 20m 30m 40m 50m



INSET SITE PLAN

LEGEND

	EXISTING BUILDINGS
	ELECTRICAL POLE
	FUEL SYSTEM
	OVERHEAD WIRES
	NAVIGATIONAL LIGHT
	ARMOUR STONE
	SOUNDINGS BELOW CHART DATUM - ELEVATIONS MAY BE DIFFERENT THAN SHOWN
	SOUNDINGS ABOVE CHART DATUM - ELEVATIONS MAY BE DIFFERENT THAN SHOWN

GENERAL NOTES

1. THE CONTRACTOR TO CONFIRM THE LOCATION AND QUANTITY OF EXISTING CONCRETE ANCHOR BLOCKS ON SITE. CONTRACTOR TO PROVIDE DEPARTMENT REPRESENTATIVE INFORMATION ON THE FINDINGS OF THE CONCRETE ANCHOR BLOCKS FOR REVIEW AND APPROVAL.
2. THE CONTRACTOR/FABRICATOR IS TO VISIT THE SITE AND BE FULLY INFORMED OF ALL PARTICULARS WHICH MAY AFFECT HIS WORK.
3. ELEVATIONS REFER TO TEMPORARY BENCHMARK ESTABLISHED AT PT.#3 AT TOP OF CONCRETE DECK OF MARGINAL WHARF, ELEVATION +3.10m, C.D. IN 2005.
4. CHART DATUM IS, BY INTERNATIONAL AGREEMENT, A PLANE BELOW WHICH THE TIDE WILL SELDOM FALL. THE CANADIAN HYDROGRAPHIC SERVICE HAS ADOPTED THE PLANE OF LOWEST NORMAL TIDE (L.N.T.) AS CHART DATUM. AS THE RISE, FALL AND RANGE OF TIDES VARIES DAILY, THE CANADIAN TIDE AND CURRENT TABLES, AS ISSUED BY THE CANADIAN HYDROGRAPHIC SERVICE, SHOULD BE CONSULTED FOR TIDAL PREDICTIONS AND OTHER TIDAL INFORMATION RELATING TO WORK.

SOUNDINGS NOTES

SURVEY PARTY CHIEF D. GREEN
 SURVEY VESSEL SCOTIA SURVEYOR
 SURVEY DATE(S) MAY 18, 2005

SOUNDER TYPE: MCS 2000
 SOUNDER SETTING INST VEL OF SOUND 1461m/s
 DEPTH GATE USED 1.0 FREQ. OF TRANS. 210 KHZ
 POSITIONING SYSTEM USED TRIMBLE 5700
 LAND SURVEY POSITION BY N/A

RAW DATA FILE(S): MAN138X.ZIP
 CAD DRAWING FILE(S): MAN138A1.DWG & MAN138A2.DWG

TIDAL REDUCTION SCHEME:
 TIDAL DATUM REFERENCED TO N.S.C.M. 1652; ELEVATION = +3.23m, C.D.
 A GEODETIC TO CHART DATUM CORRECTION OF +0.88m WAS APPLIED.
 TEMPORARY BENCH MARK ESTABLISHED AT PT.#3 AT TOP OF CONCRETE DECK OF MARGINAL WHARF; ELEVATION = +3.10m, C.D.

OFFICE PROCESSOR J.C VAUTOUR
 DATE OF PROCESSING MAY 26, 2005

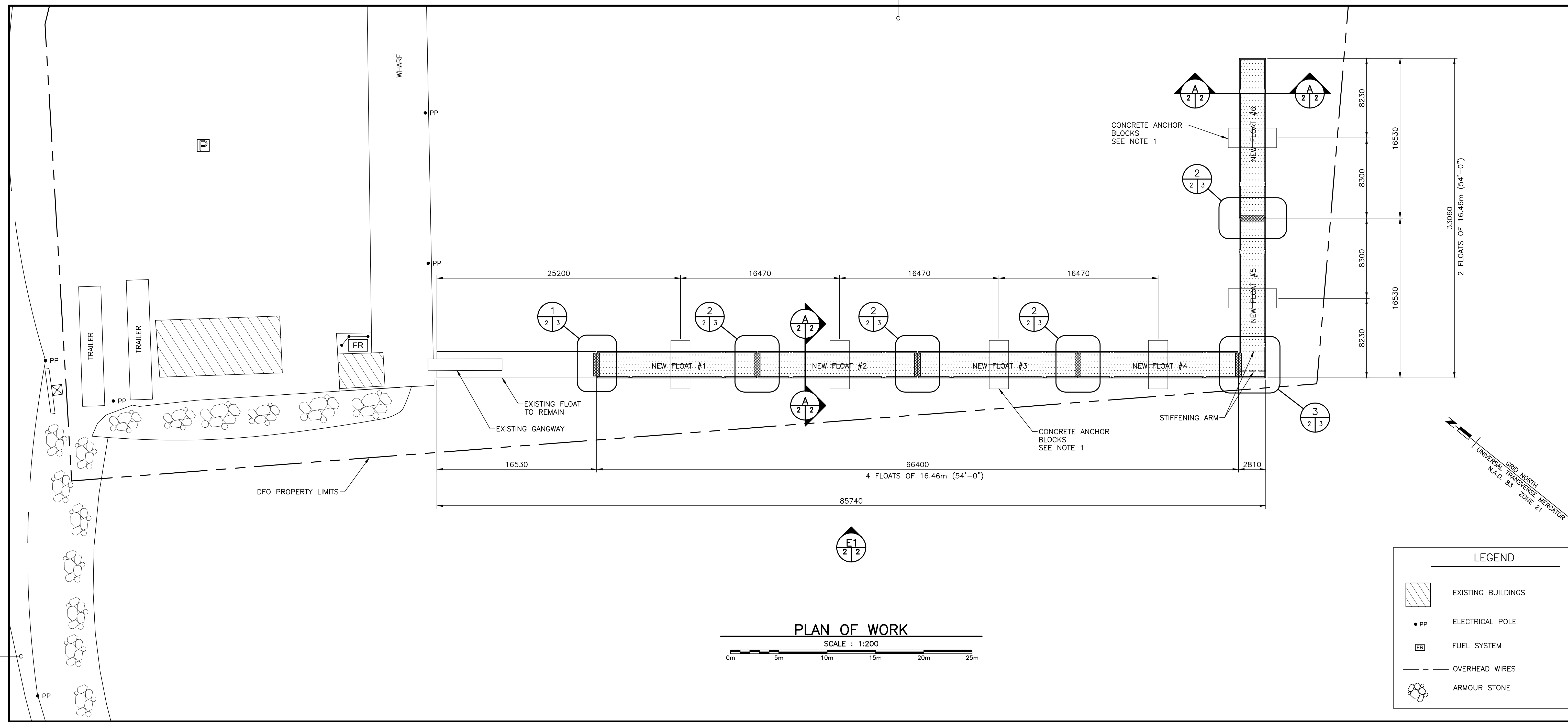
MODE OF PLOTTING AVERAGE DEPTHS
 MATRIX CELL 1.2 X 3.0

CONTROL POINTS:

PL NAME	EASTING	NORTHING	CD ELEV	DESCRIPTION
1652	280149.761	5098803.296	+3.23m	LRIS
PT#2	279862.211	5098555.032	+3.08m	PWC CONTROL
PT#3	279965.615	5098694.655	+3.10m	PWC CONTROL
PT#4	280058.458	5098702.336	+3.15m	PWC CONTROL

Fisheries and Oceans Pêches et Océans
 Canada
 Small Craft Harbours Ports pour Petits Bateaux
 Maritimes/Gulf Region Région des Maritimes/Golfe

0	ISSUED FOR TENDER	NOV 1 2019
revisions		date
project	FLOATING WHARVES CONSTRUCTION & INSTALLATION MAIN-A-DIEU CAPE BRETON, CO., NS	
drawing	desain	
EXISTING SITE PLAN		
designed	E. COPELAND	conçu
date	OCTOBER 2019	
drawn	A. ARSENAULT	desain
date	OCTOBER 2019	
approved		approuvé
date		
Tender	Submission	
Project Manager	Administrateur de projet	
project number	no. du projet	
	723078	
drawing no.	no. du dessin	
	M1 of M6	

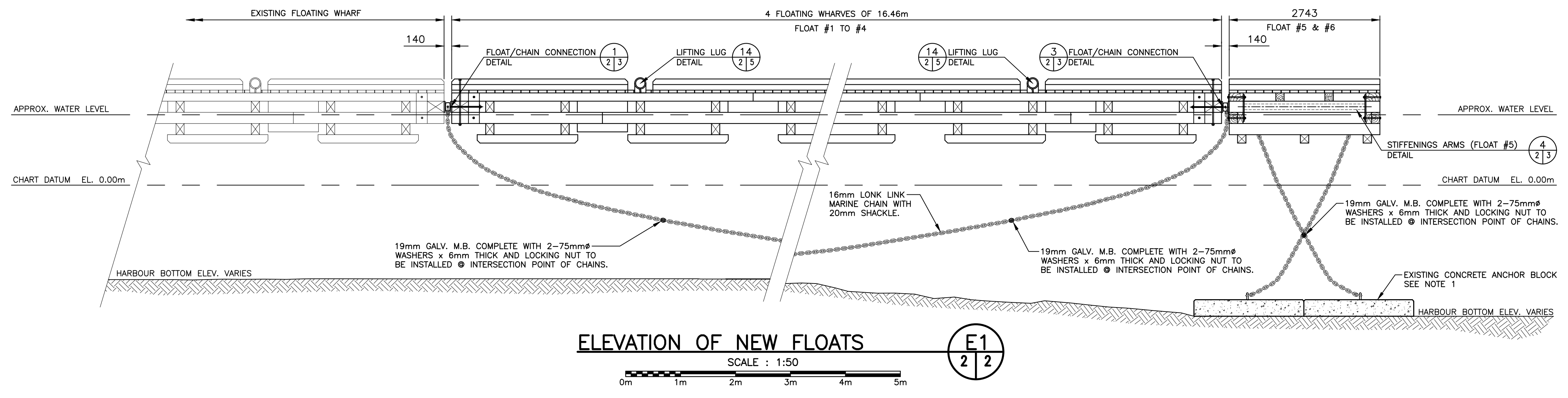


PLAN OF WORK
SCALE : 1:200

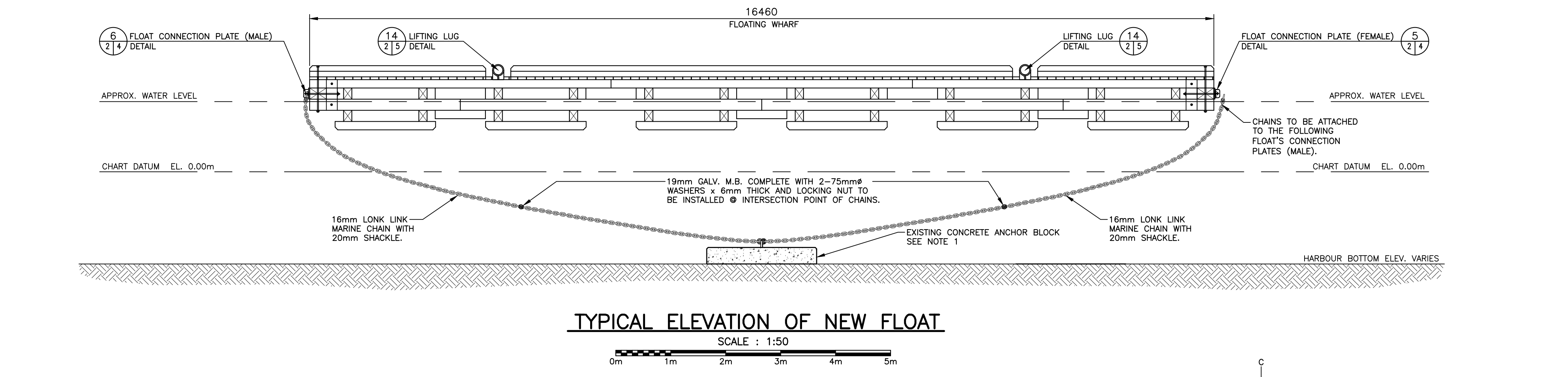
LEGEND

- EXISTING BUILDINGS
- ELECTRICAL POLE
- FUEL SYSTEM
- OVERHEAD WIRES
- ARMOUR STONE

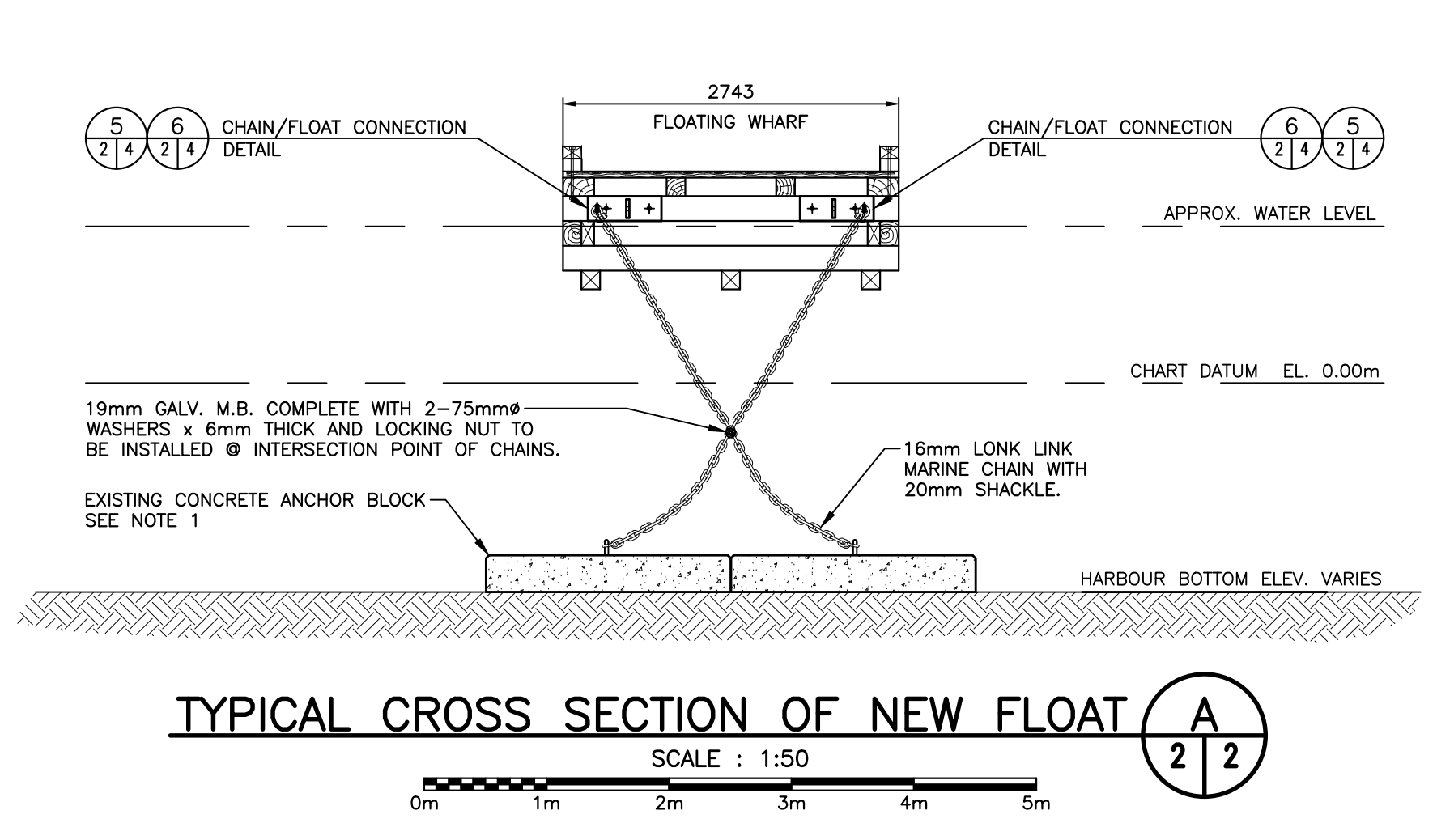
- GENERAL NOTES**
1. THE CONTRACTOR TO CONFIRM THE LOCATION AND QUANTITY OF ANCHOR BLOCKS ON SITE. CONTRACTOR TO PROVIDE DEPARTMENT REPRESENTATIVE INFORMATION ON THE FINDINGS OF THE CONCRETE ANCHOR BLOCKS FOR REVIEW AND APPROVAL.
 2. ALL WORK SHALL BE IN ACCORDANCE WITH THE NATIONAL BUILDING CODE OF CANADA, CURRENT EDITION AND ALL OTHER CODES OF LOCAL OR PROVINCIAL APPLICATION.
 3. PERFORM WORK TO THE BEST ACCEPTABLE STANDARD OF EACH PARTICULAR TRADE.
 4. WORK UNDER THIS CONTRACT CONSISTS OF ALL NECESSARY SITE WORK, BUILDING CONSTRUCTION AND FINISHING AS REQUIRED TO COMPLETE THE PROJECT.
 5. CONTRACTOR/FABRICATOR IS TO VISIT THE SITE AND BE FULLY INFORMED OF ALL PARTICULARS WHICH MAY AFFECT HIS WORK.
 6. PRIOR TO COMMENCING WORK, VERIFY THAT LAYOUT AND DIMENSIONS ARE ACCURATE IN ACCORDANCE WITH THE INTENT OF DRAWING. NOTIFY DEPARTMENT REPRESENTATIVE OF ANY DISCREPANCIES.
 7. ALL STEEL ITEMS ARE TO BE HOT-DIPPED GALVANIZED WITH A MINIMUM COATING OF 610 g/m² CONFORMING TO CSA-G164.



ELEVATION OF NEW FLOATS
SCALE : 1:50

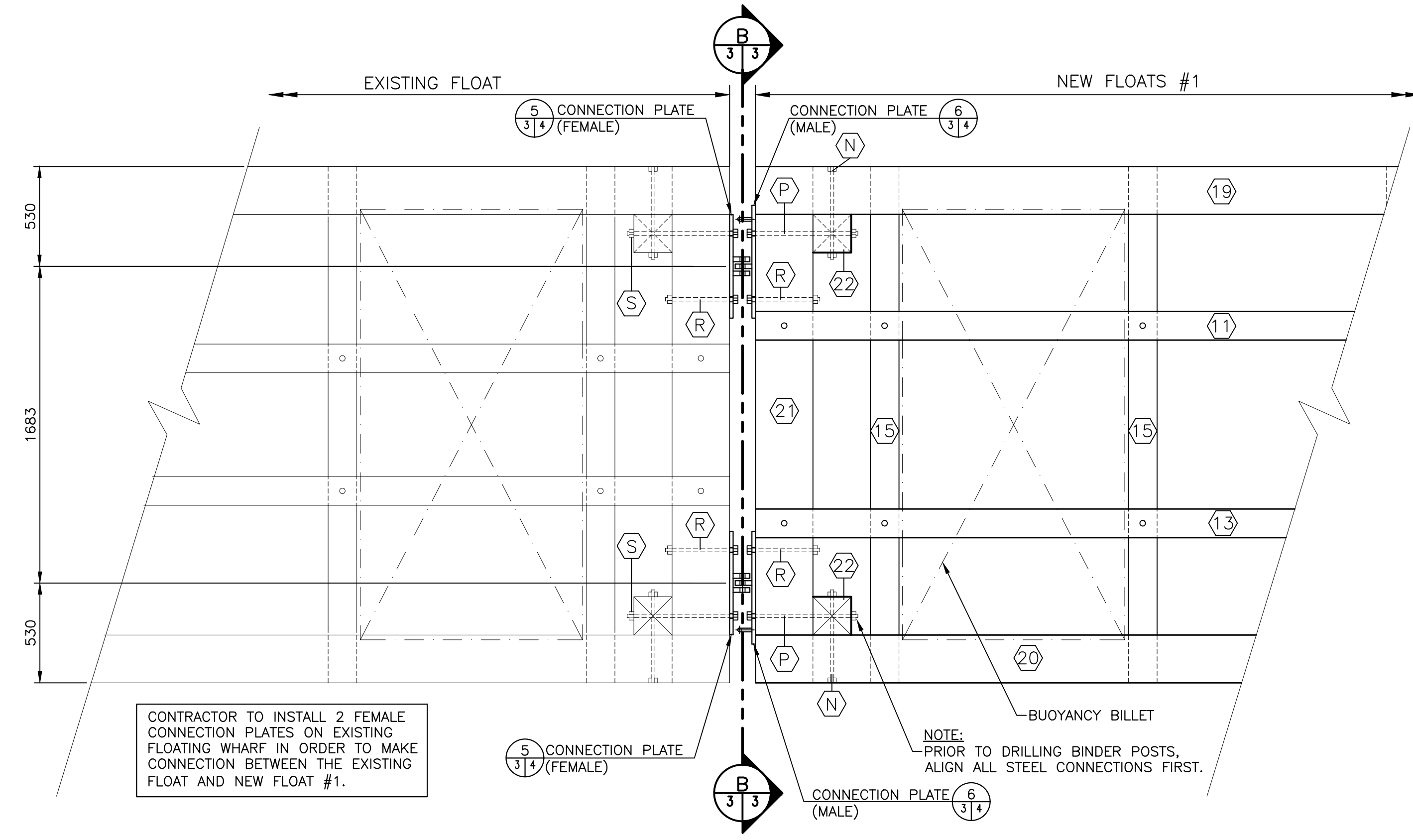


TYPICAL ELEVATION OF NEW FLOAT
SCALE : 1:50



TYPICAL CROSS SECTION OF NEW FLOAT
SCALE : 1:50

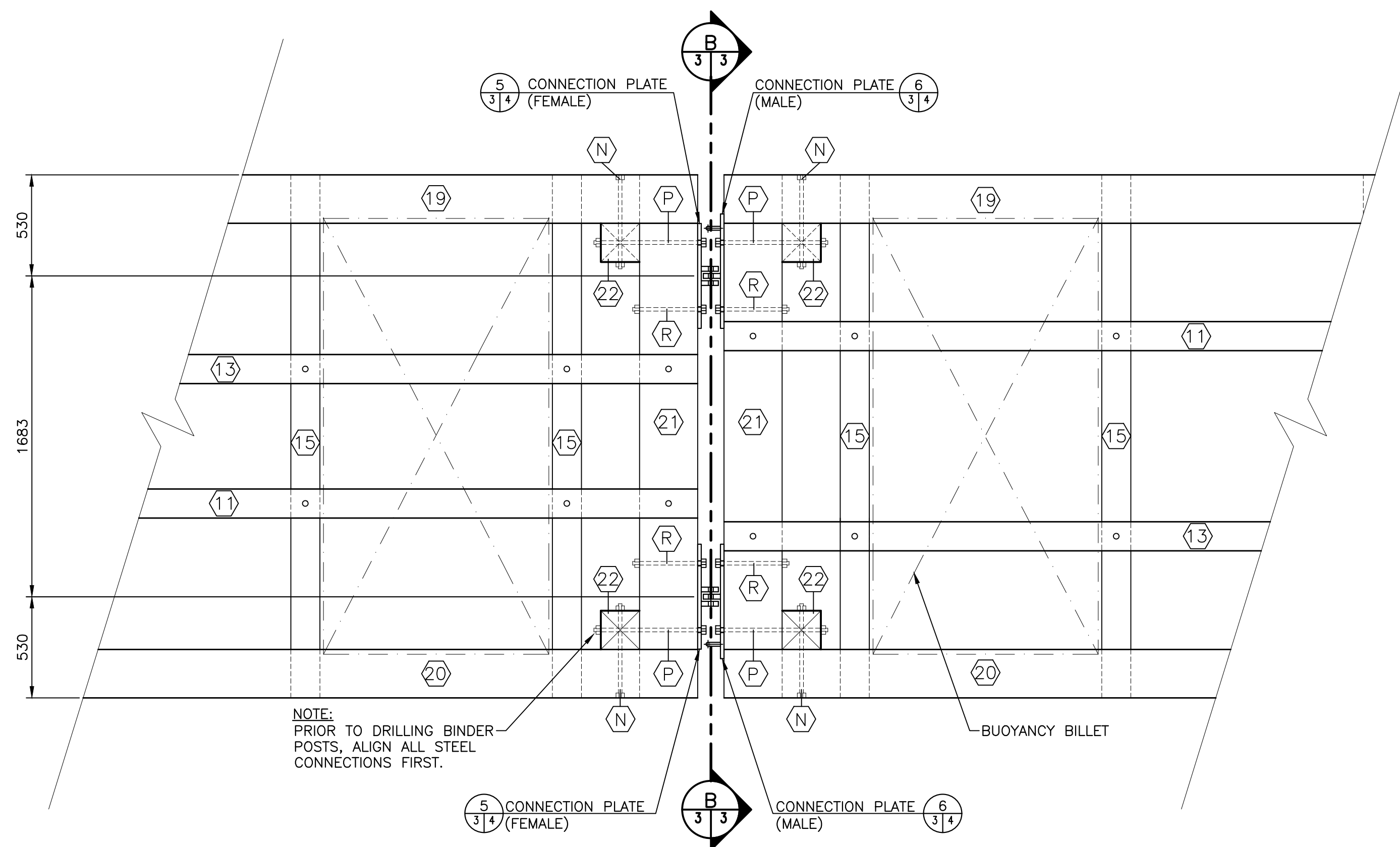
0	ISSUED FOR TENDER	NOV 1 2019
revisions		date
project	FLOATING WHARVES CONSTRUCTION & INSTALLATION MAIN-A-DIEU CAPE BRETON, CO., NS	
designer	E. COPELAND	
date	OCTOBER 2019	
drawn	A. ARSENAULT	dessiné
date	OCTOBER 2019	
approved		approuvé
date		
tender	Submission	
Project Manager	Administrateur de projet	
project number	723078	no. du projet
drawing no.	M2 of M6	no. du dessin



FLOAT CONNECTION DETAIL 1 LOCATION

SCALE : 1:20

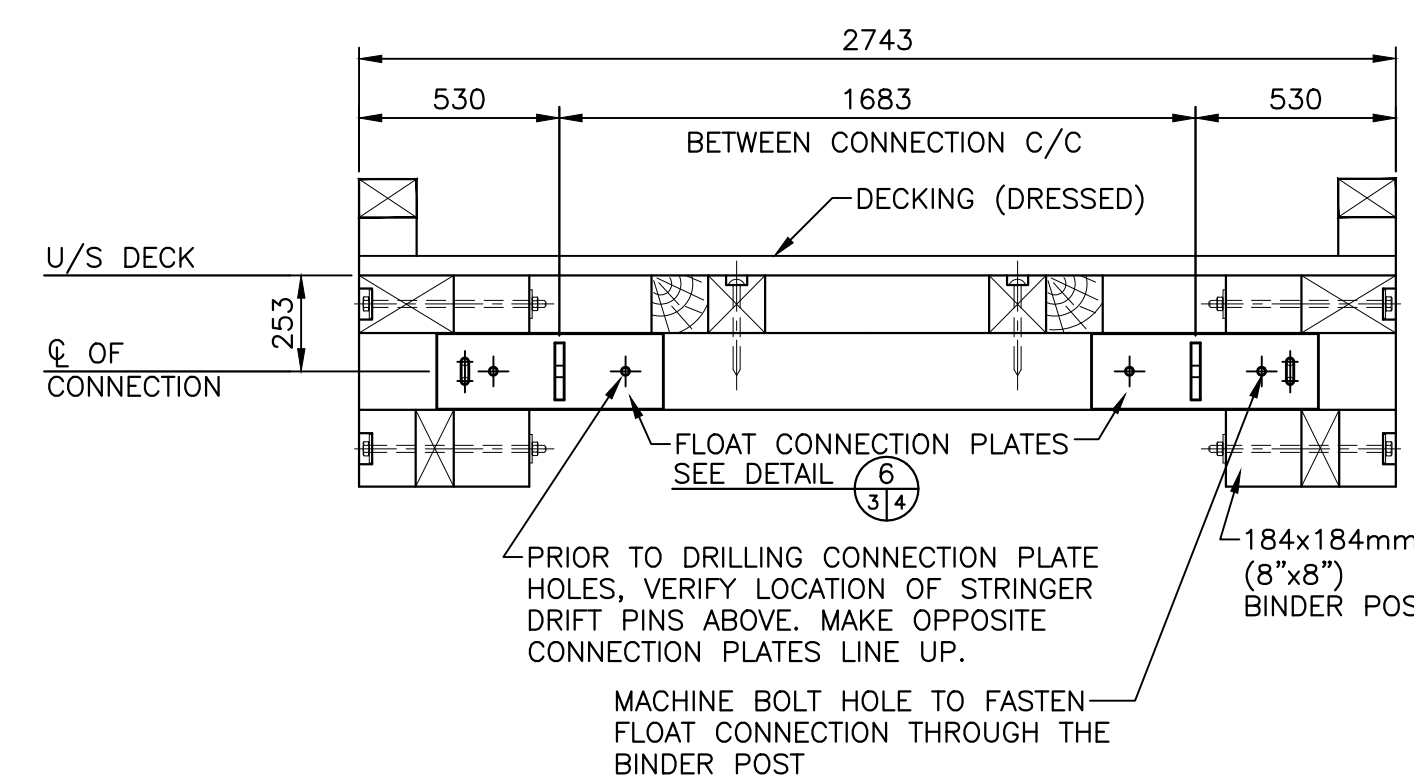
0mm 500mm 1000mm 1500mm 2000mm 2500mm



TYPICAL FLOAT CONNECTION DETAIL 4 LOCATIONS

SCALE : 1:20

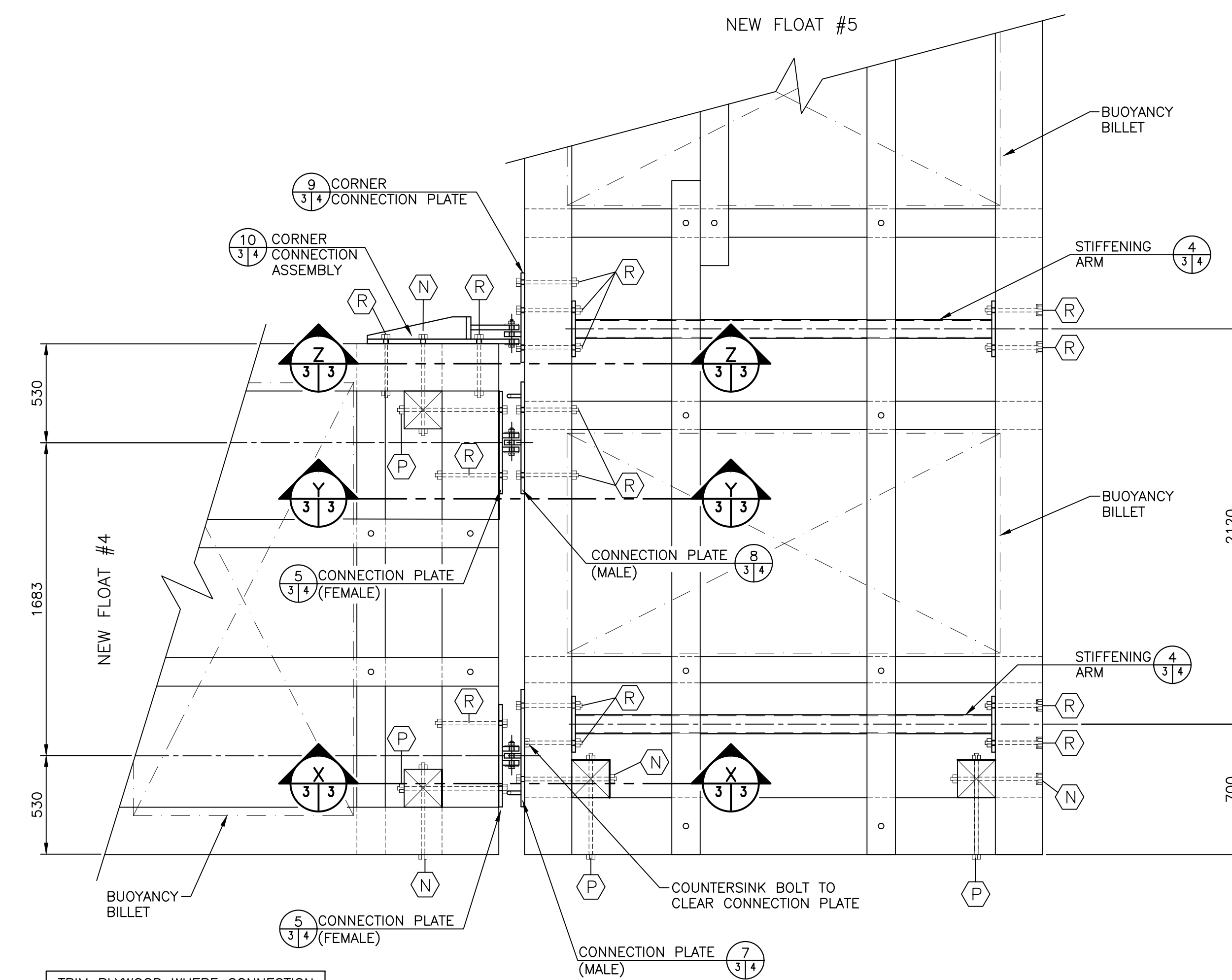
0mm 500mm 1000mm 1500mm 2000mm 2500mm



TYPICAL END VIEW OF FLOATS (SECTION "B-B")

SCALE : 1:20

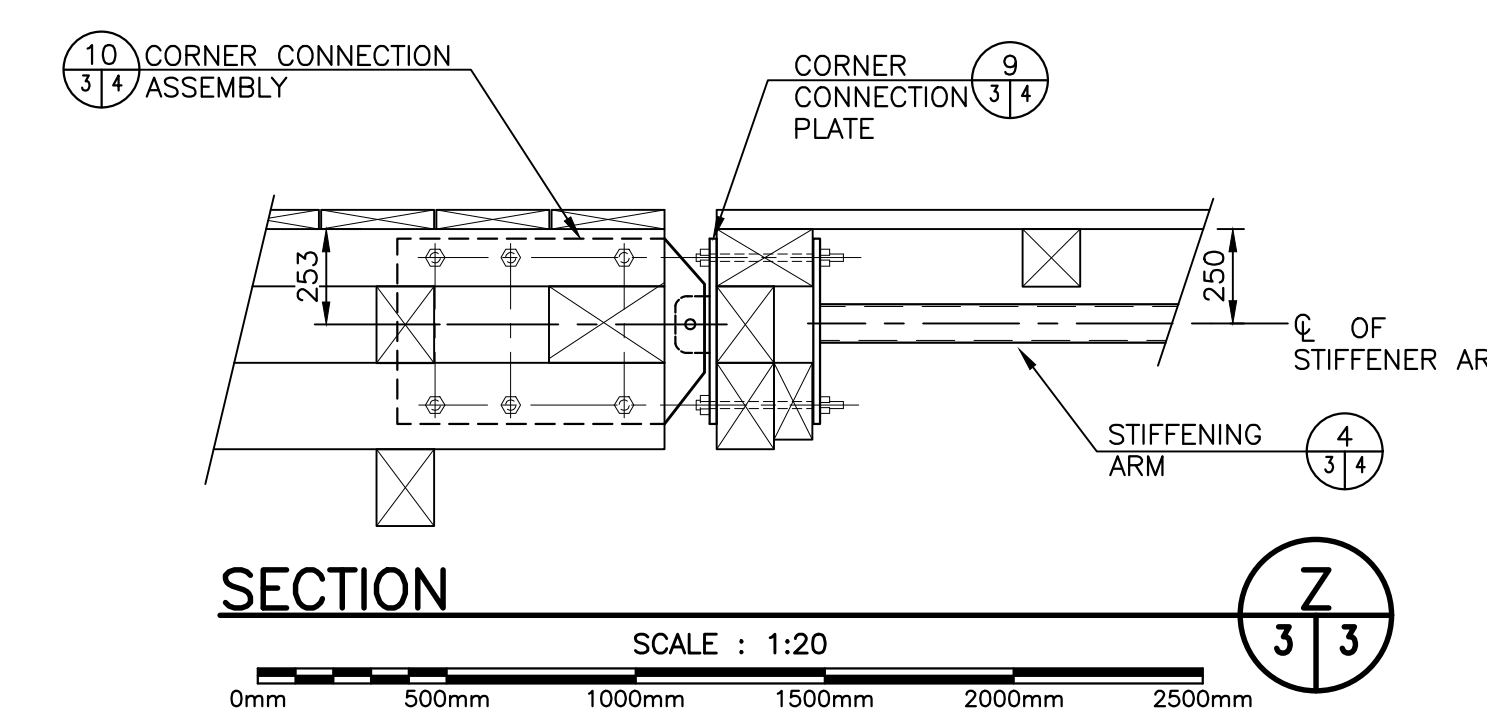
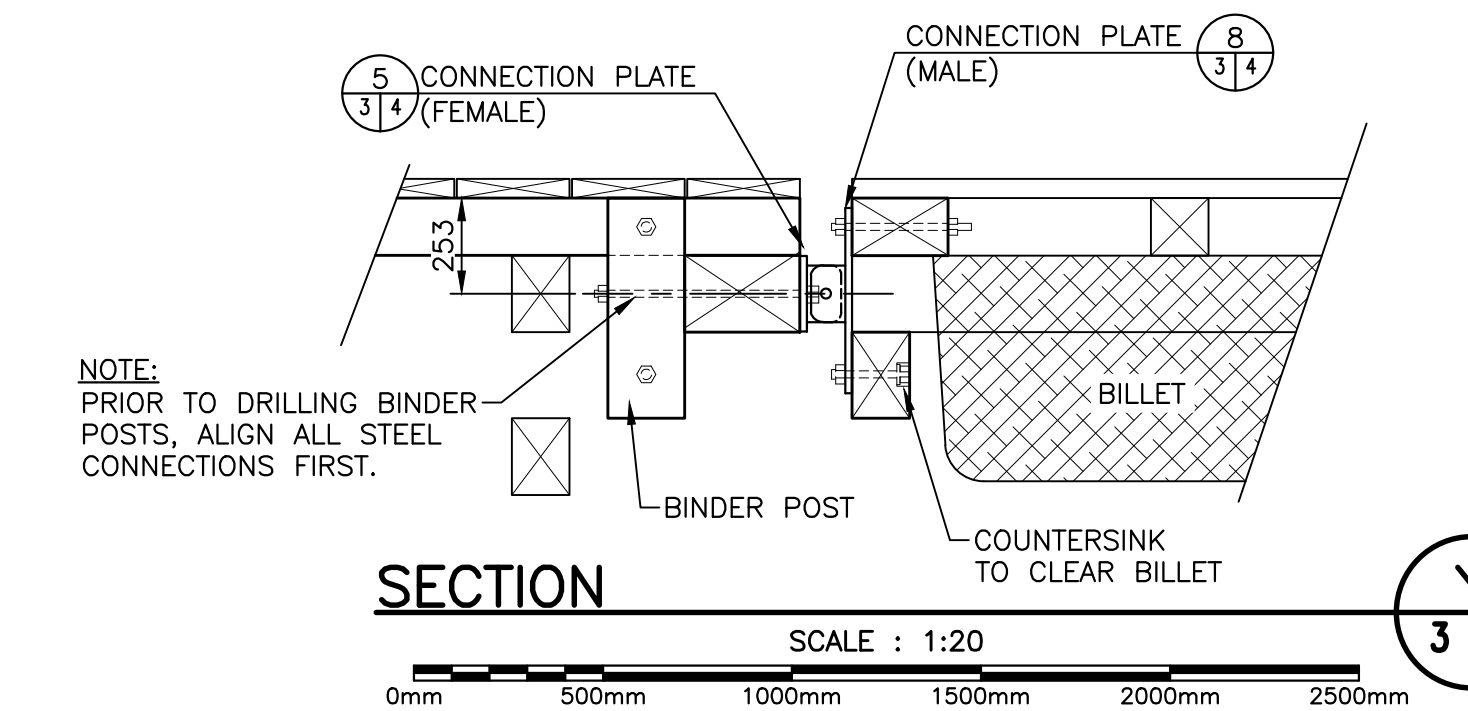
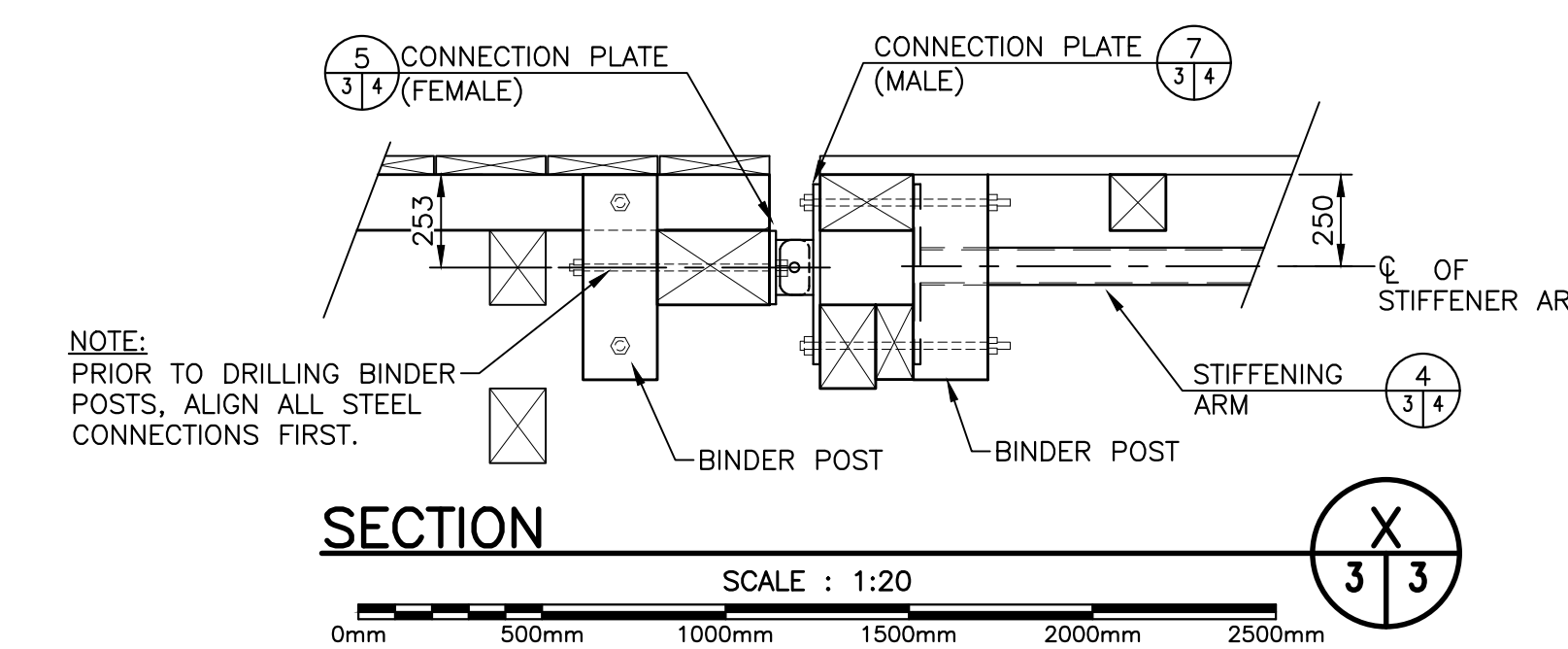
0mm 500mm 1000mm 1500mm 2000mm 2500mm



FLOAT #4 AND #5 CONNECTION

SCALE : 1:20

0mm 500mm 1000mm 1500mm 2000mm 2500mm

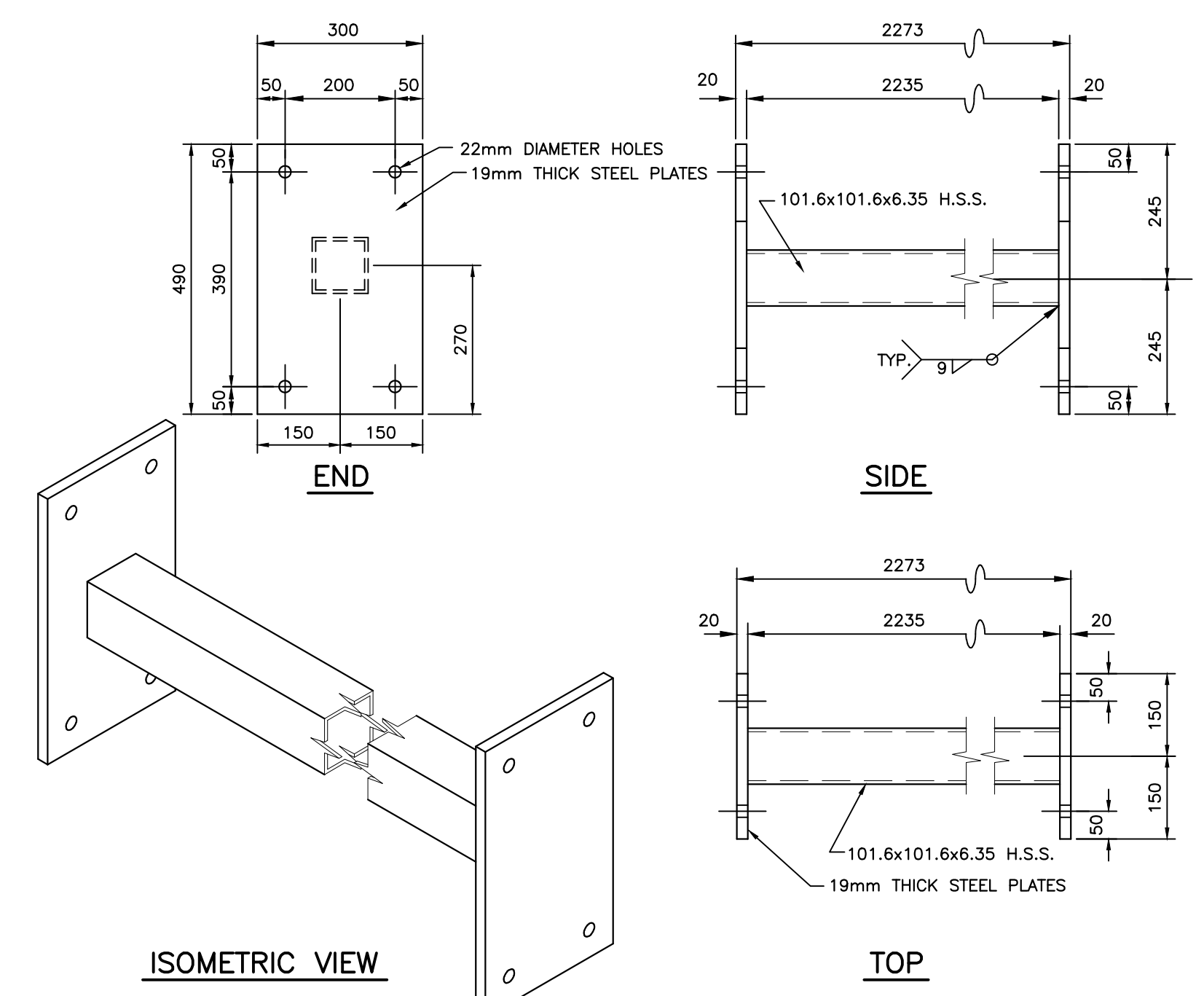


0	ISSUED FOR TENDER	NOV 1 2019
revisions		date
project	FLOATING WHARVES CONSTRUCTION & INSTALLATION MAIN-A-DIEU CAPE BRETON, CO., NS	
drawing	dessin	

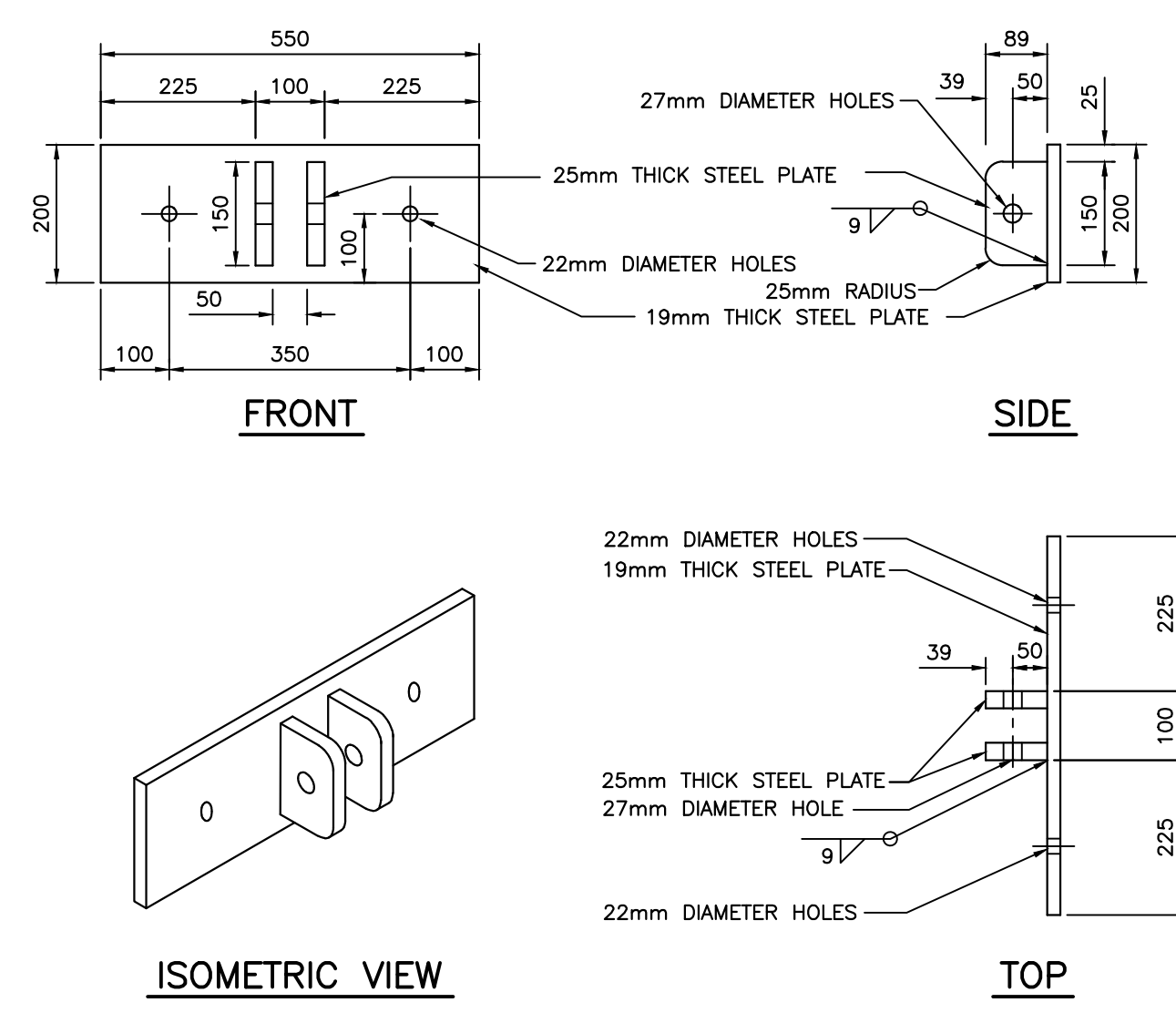
NEW FLOATS SECTIONS AND DETAILS

designed	E. COPELAND	conçu
date	OCTOBER 2019	
drawn	A. ARSENAULT	dessiné
date	OCTOBER 2019	
approved		approuvé
date		
Tender	Soumission	
Project Manager	Administrateur de projet	
project number	no. du projet	
	723078	
drawing no.	no. du dessin	
	M3 of M6	

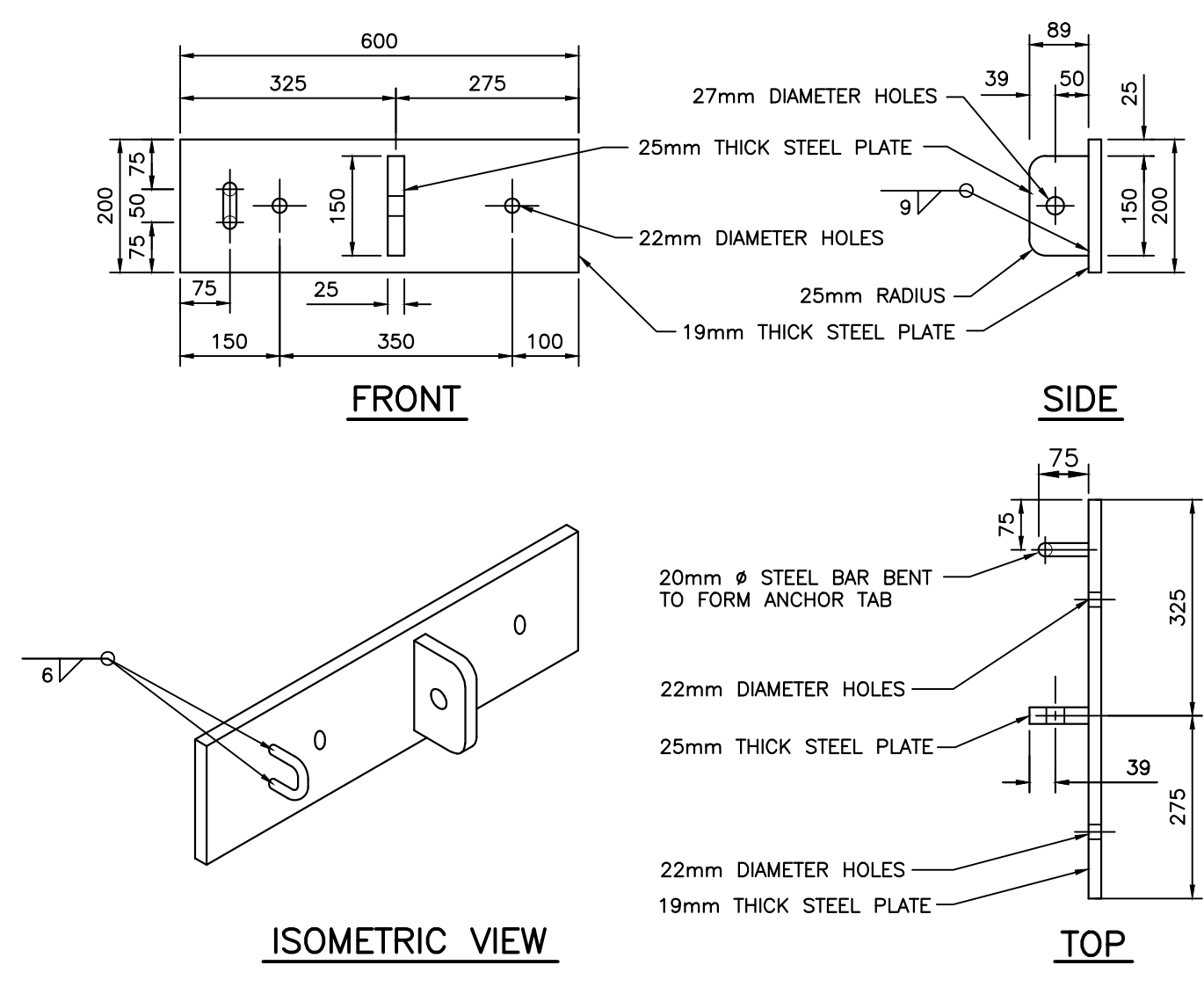
- ALUMINUM:**
1. ALUMINUM TO CONSIST 6061-T6 MARINE ALLOY.
2. FABRICATOR TO CREATE WELD PROCEDURE AND QUALIFICATION RECORD IN ACCORDANCE WITH CSA W47.1M.
- WELDING:**
1. ALL STRUCTURAL STEEL TO BE UNLESS OTHERWISE NOTED MINIMUM G40.21 300W, FREE FROM RUST & SCALE.
2. CODES AND STANDARDS, (ALL TO LATEST EDITION AND REVISION)
a) ALL WORK TO CONFORM TO THE NATIONAL BUILDING CODE.
b) WELD QUALITY AND WORKMANSHIP TO CSA STANDARD W47.1 & W59.
c) WELDERS TO BE CERTIFIED BY CANADIAN WELDING BUREAU.
d) THIS DESIGN CONFORMS TO CSA CODE S16.1
3. SHOP DRAWING SHALL BE REVIEWED BY DEPARTMENT REPRESENTATIVE PRIOR TO FABRICATION IF FABRICATOR CONNECTION DETAILS DIFFER FROM DESIGN DRAWINGS.
4. MIN JOINT DESIGN CAPACITIES, UNLESS OTHERWISE SPECIFIED:
a) TENSION MEMBERS; 50% OF MEMBER MAX. CAPACITY.
b) SHEAR MEMBERS; 50% OF MEMBER MAX. CAPACITY.
c) COMPRESSION MEMBERS:
1) GIRD MEMBER FLUSH, FILLET WELD (MIN 5mm) ALL AROUND BOX OF MEMBERS THICKNESS
2) COMPLETE PENETRATION WELD.
5. CONTRACTOR TO VERIFY ALL DIMENSIONS ON SITE.
6. ALL SHARP CORNERS, EDGES AND WELD SPATTER TO BE GROUND SMOOTH PRIOR TO GALVANIZING.
7. ELECTRODES WILL BE CLASSIFIED AS No. E480XX.



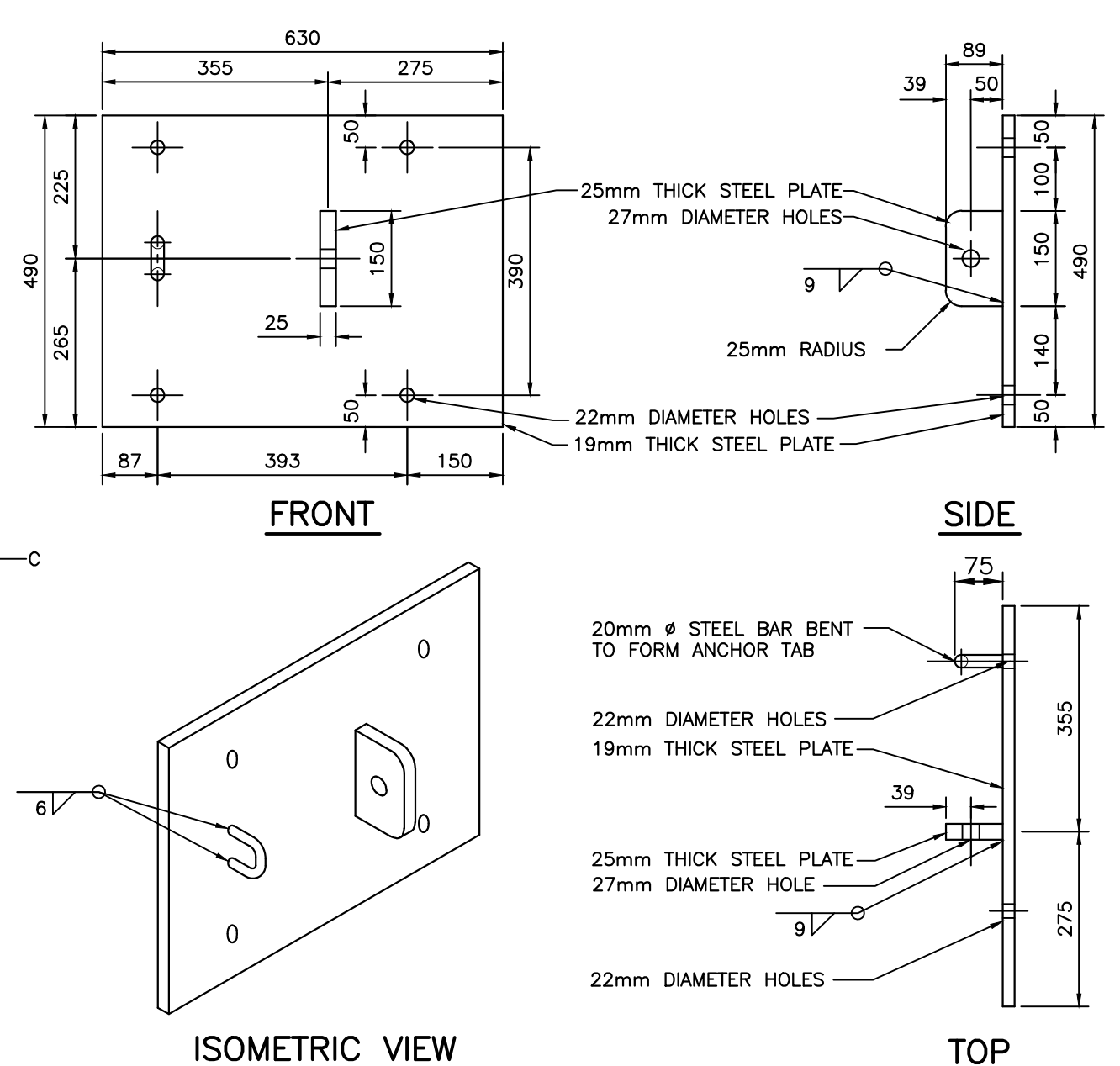
(2 REQ'D)
FLOAT STIFFENING ARM DETAIL 4
SCALE : 1:10
0mm 100 200 300 400 500 600 700 800 900 1000mm



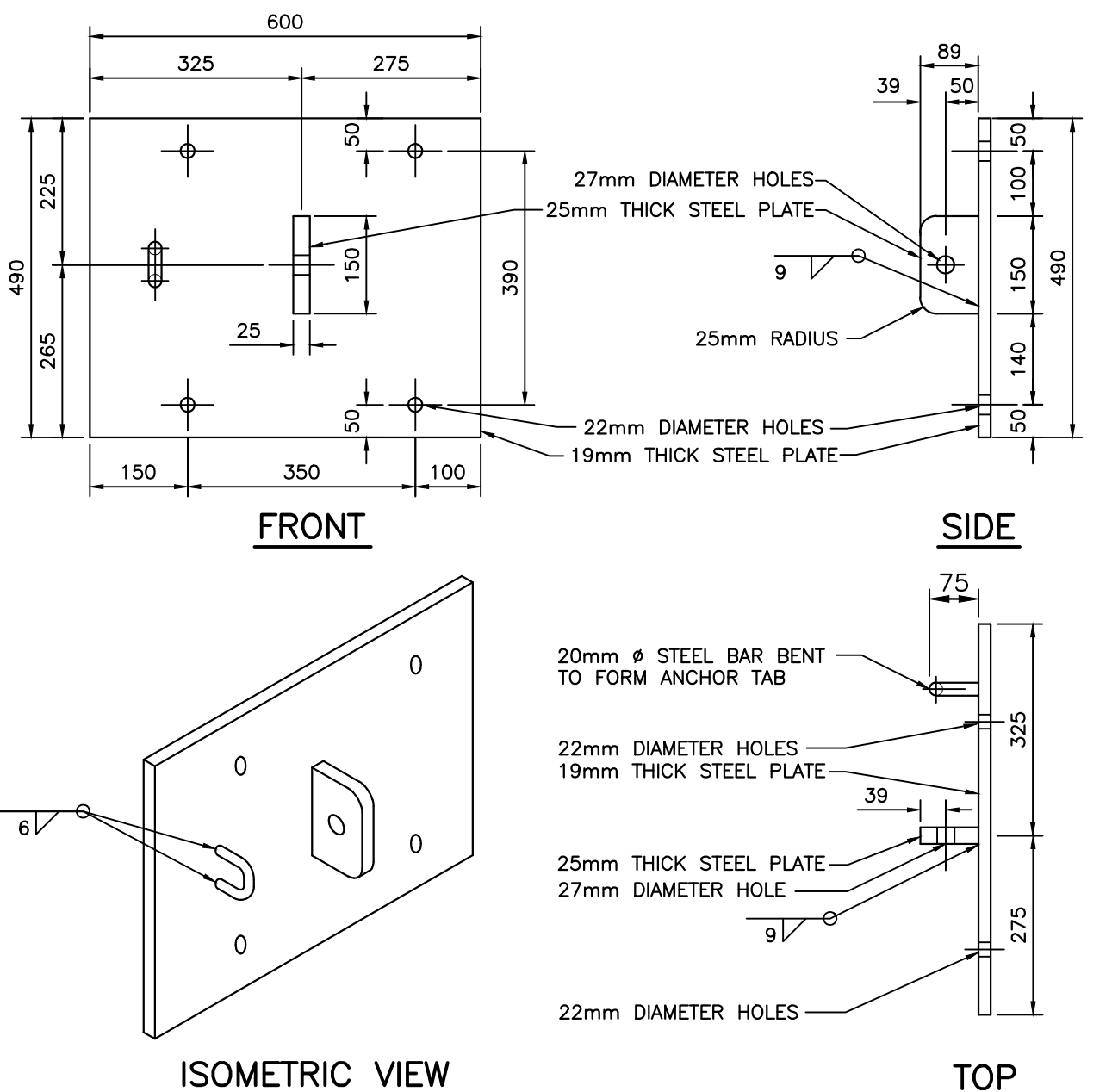
(12 REQ'D)
FLOAT CONNECTION PLATE (FEMALE) DETAIL 5
SCALE : 1:10
0mm 100 200 300 400 500 600 700 800 900 1000mm



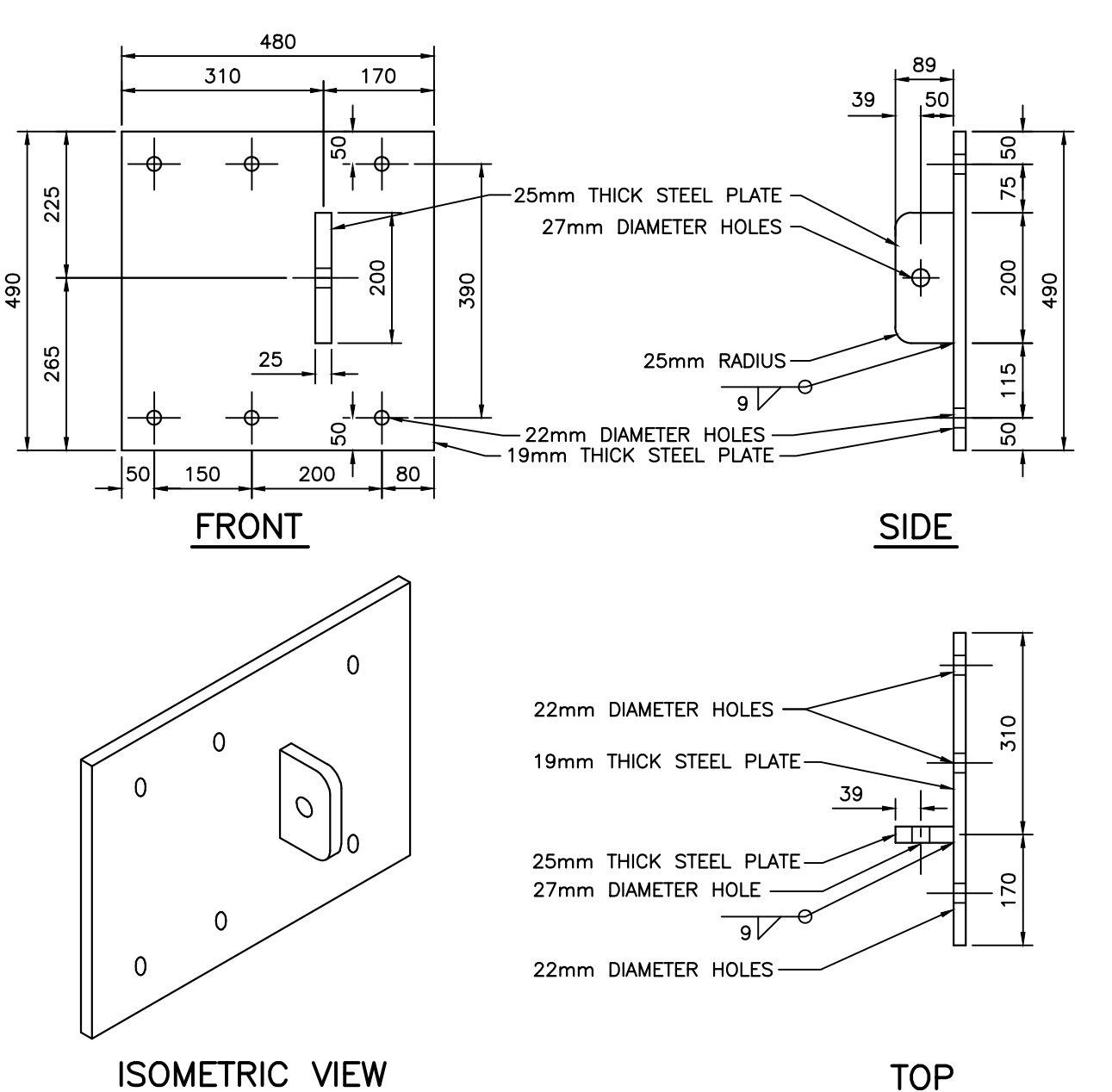
(10 REQ'D)
FLOAT CONNECTION PLATE DETAIL (MALE) W/ CHAIN CONNECTION 6
SCALE : 1:10
0mm 100 200 300 400 500 600 700 800 900 1000mm



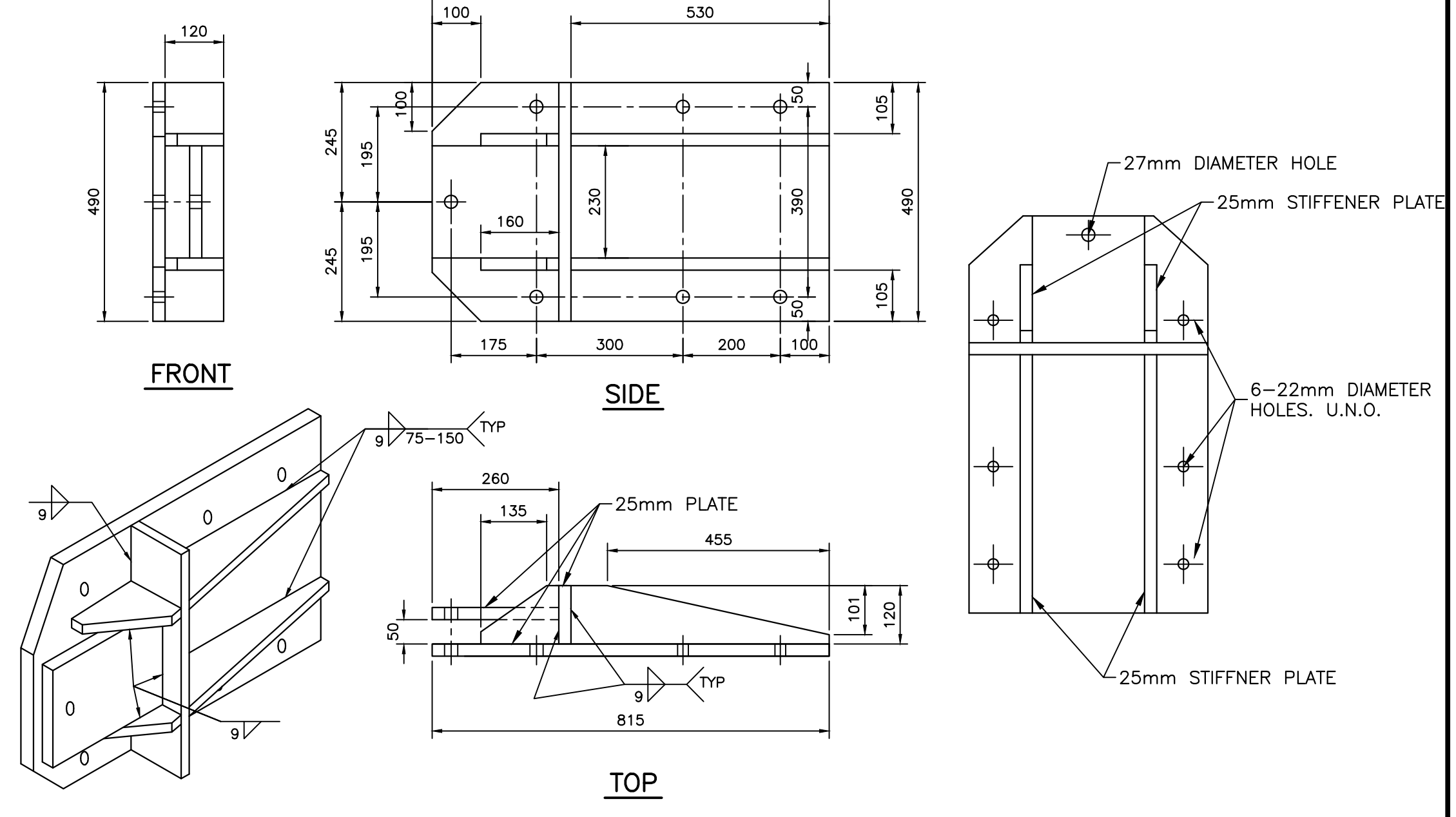
(1 REQ'D)
FLOAT CONNECTION PLATE DETAIL 7
SCALE : 1:10
0mm 100 200 300 400 500 600 700 800 900 1000mm



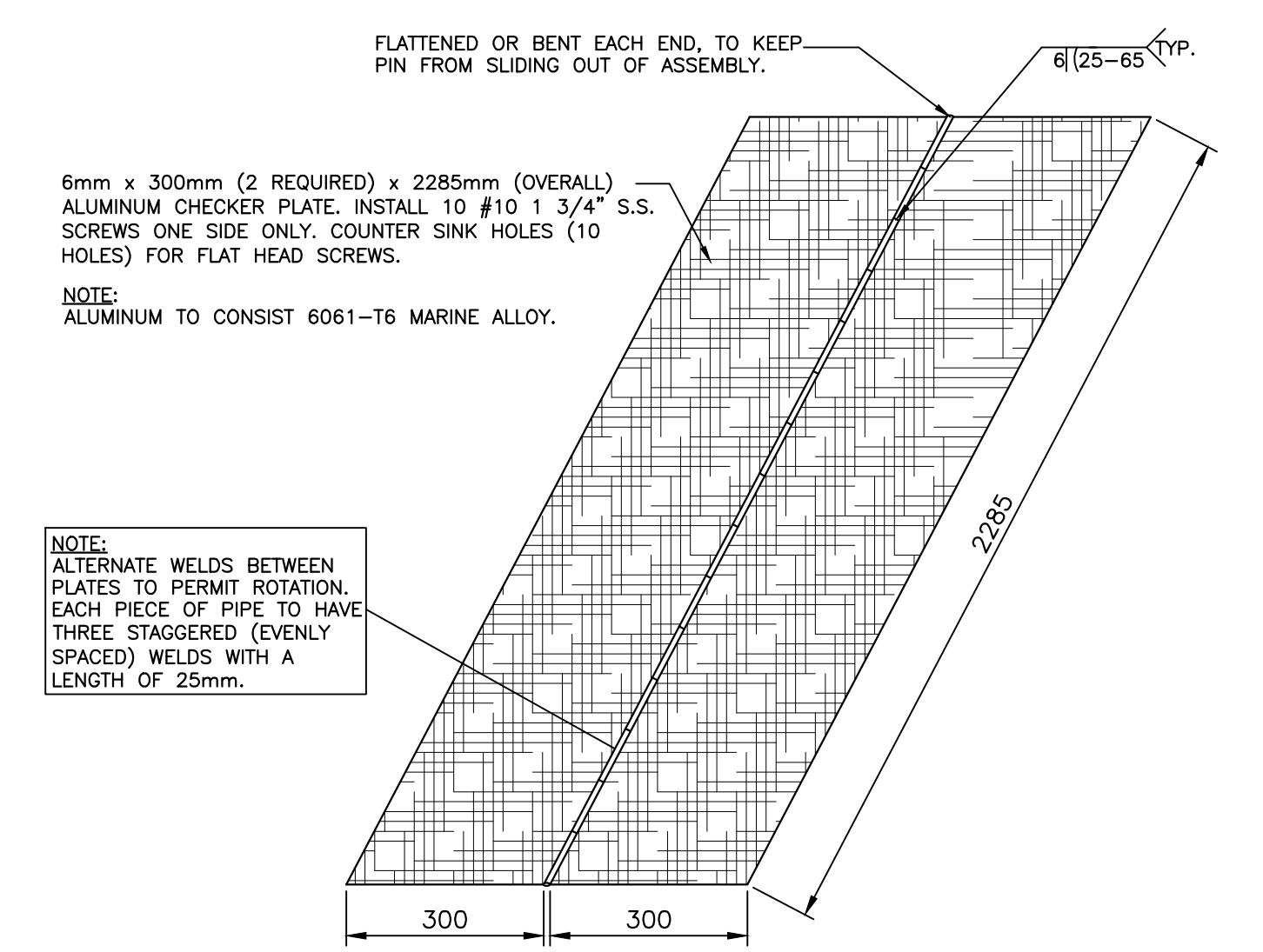
(1 REQ'D)
FLOAT CONNECTION PLATE DETAIL 8
SCALE : 1:10
0mm 100 200 300 400 500 600 700 800 900 1000mm



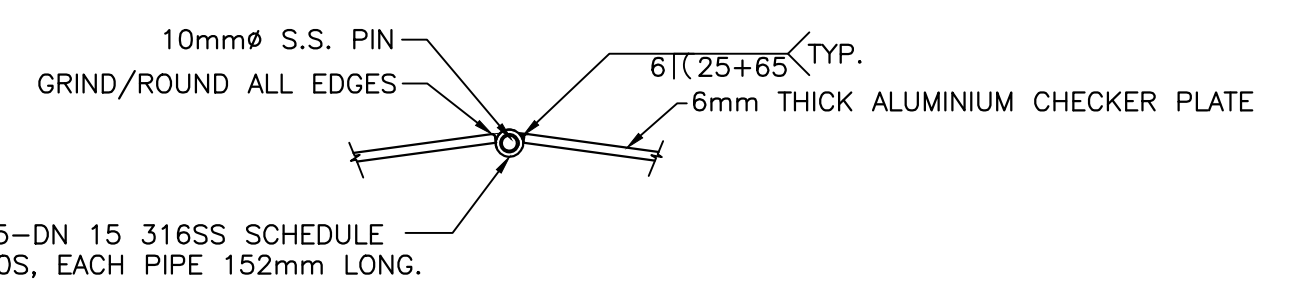
(1 REQ'D)
FLOAT CONNECTION PLATE DETAIL 9
SCALE : 1:10
0mm 100 200 300 400 500 600 700 800 900 1000mm



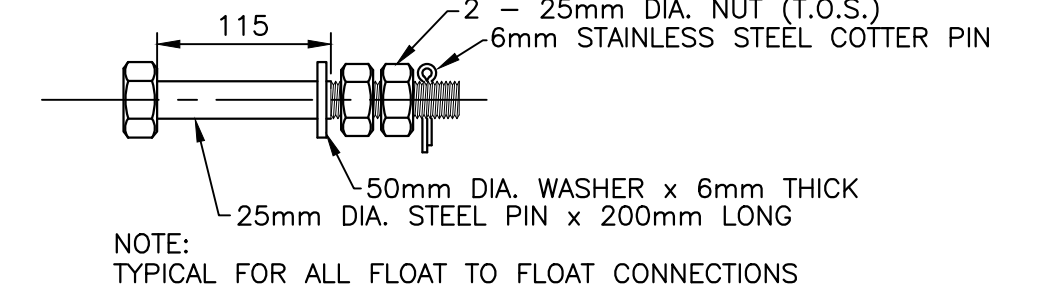
(1 REQ'D)
FLOAT CONNECTION PLATE DETAIL 10
SCALE : 1:10
0mm 100 200 300 400 500 600 700 800 900 1000mm



(6 REQ'D)
ALUMINUM CHECKER PLATE ASSEMBLY DETAIL 11
NOT TO SCALE
0mm 100 200 300 400 500 600 700 800 900 1000mm



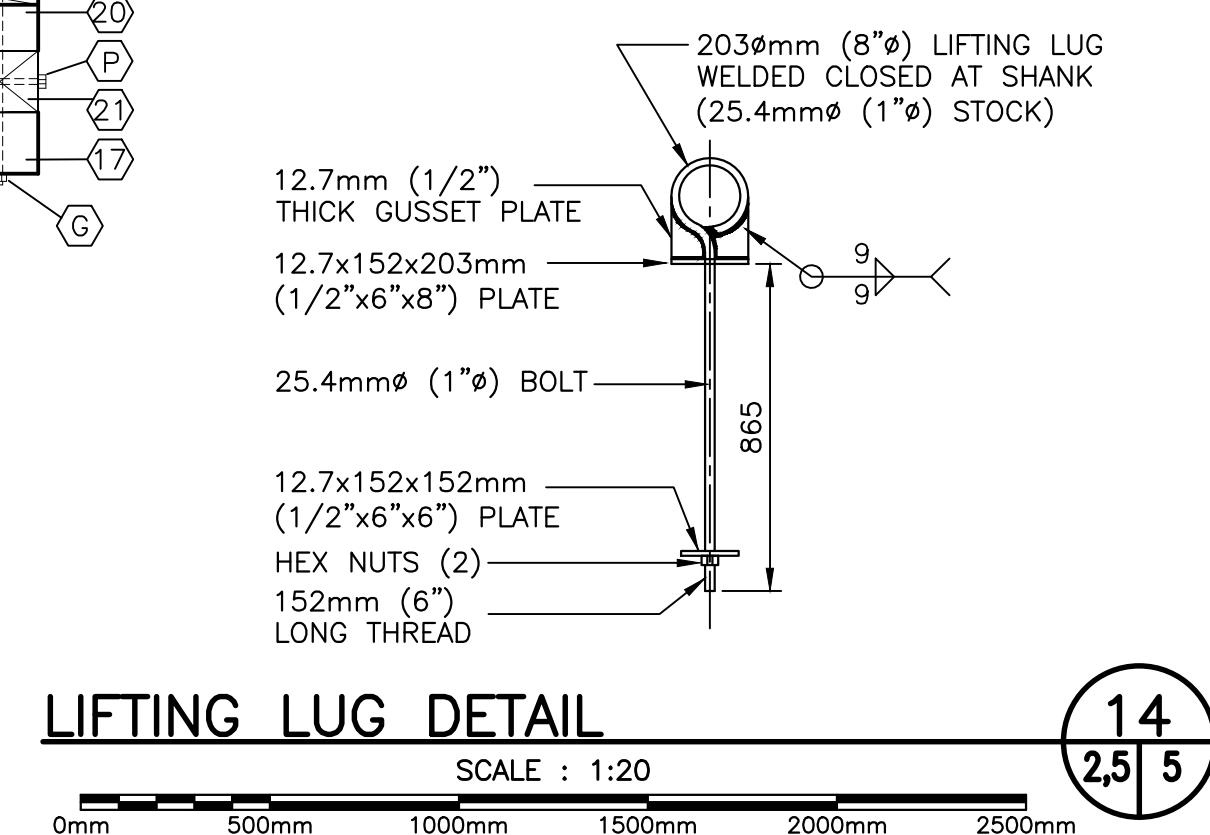
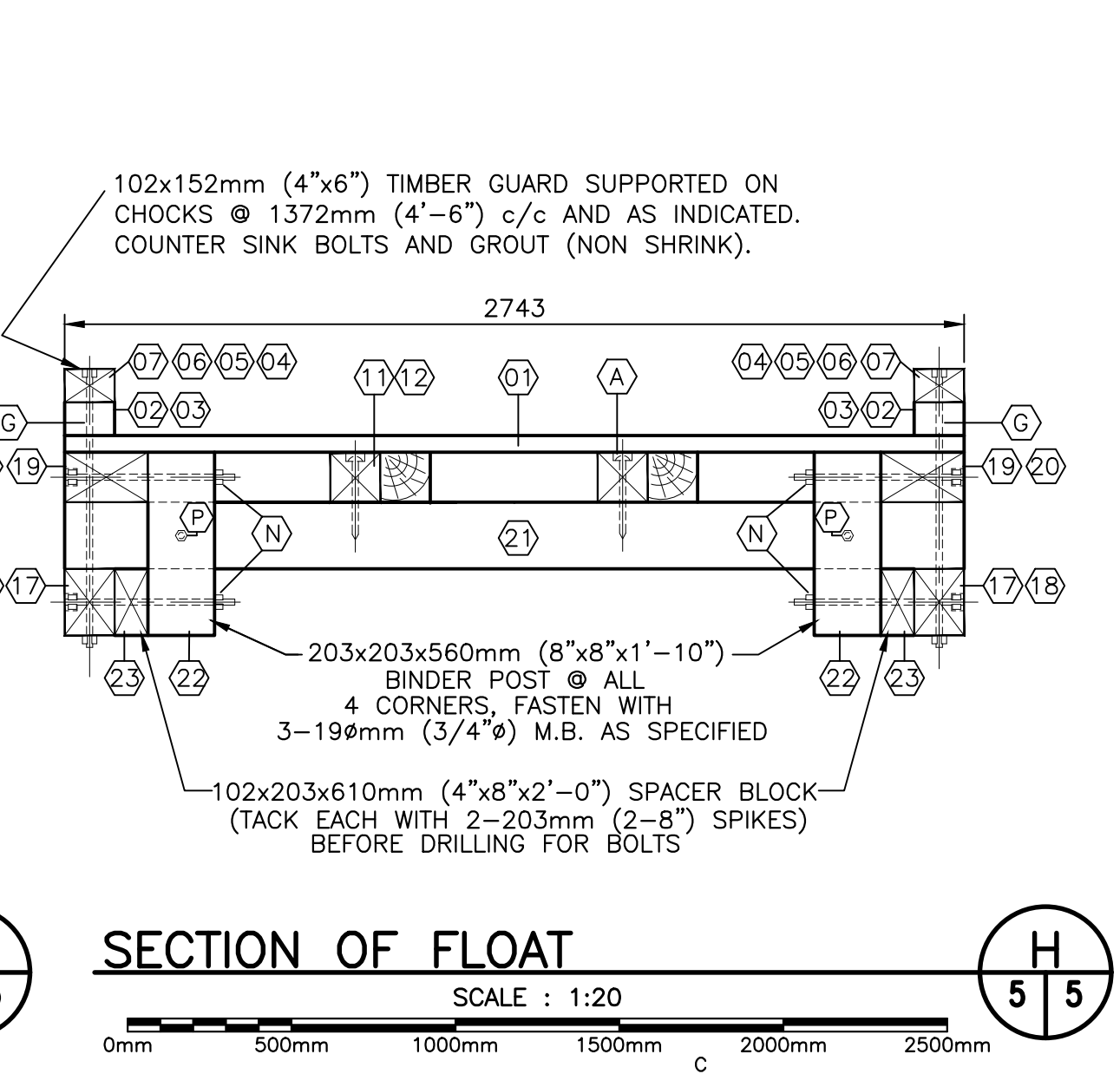
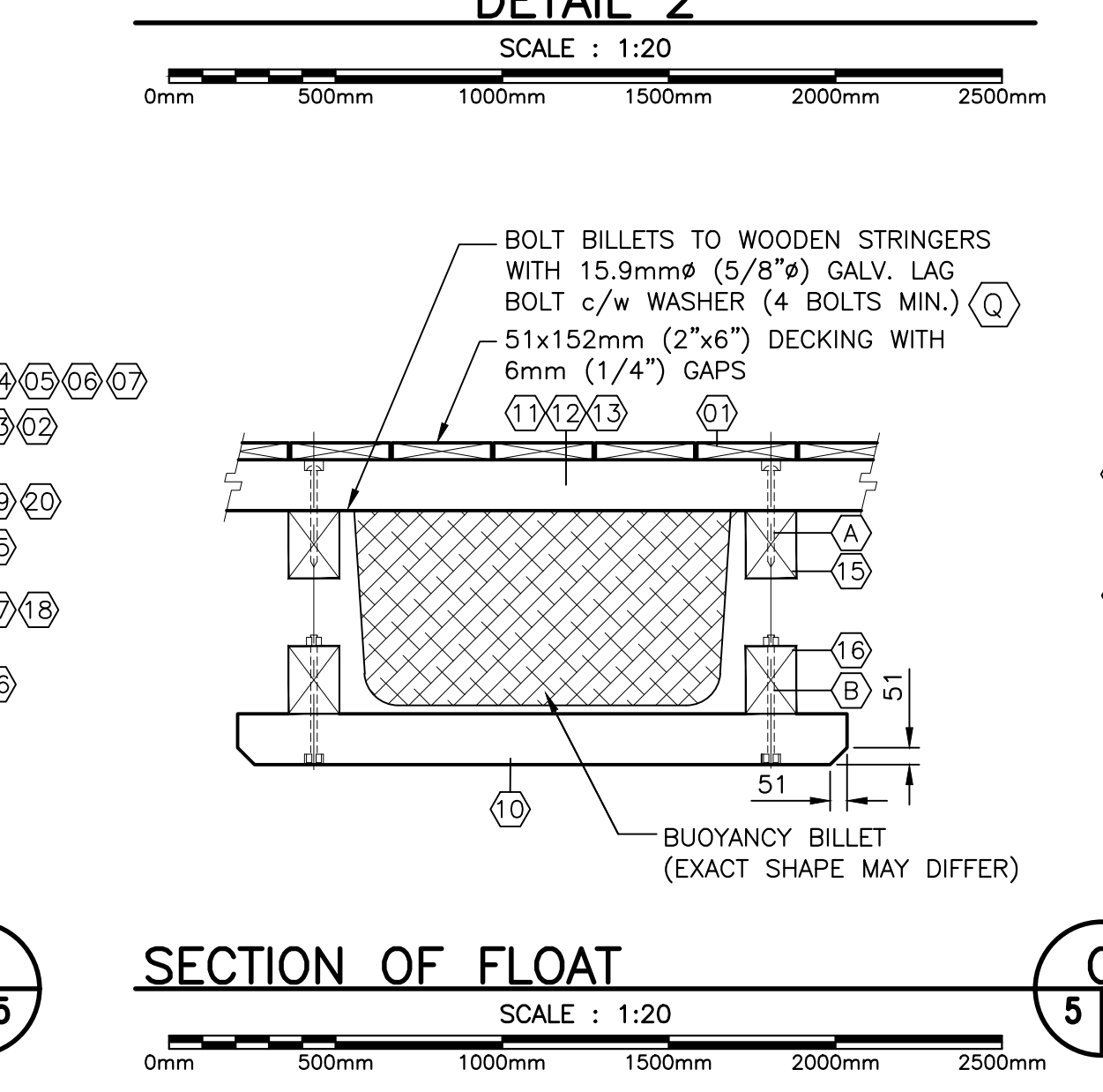
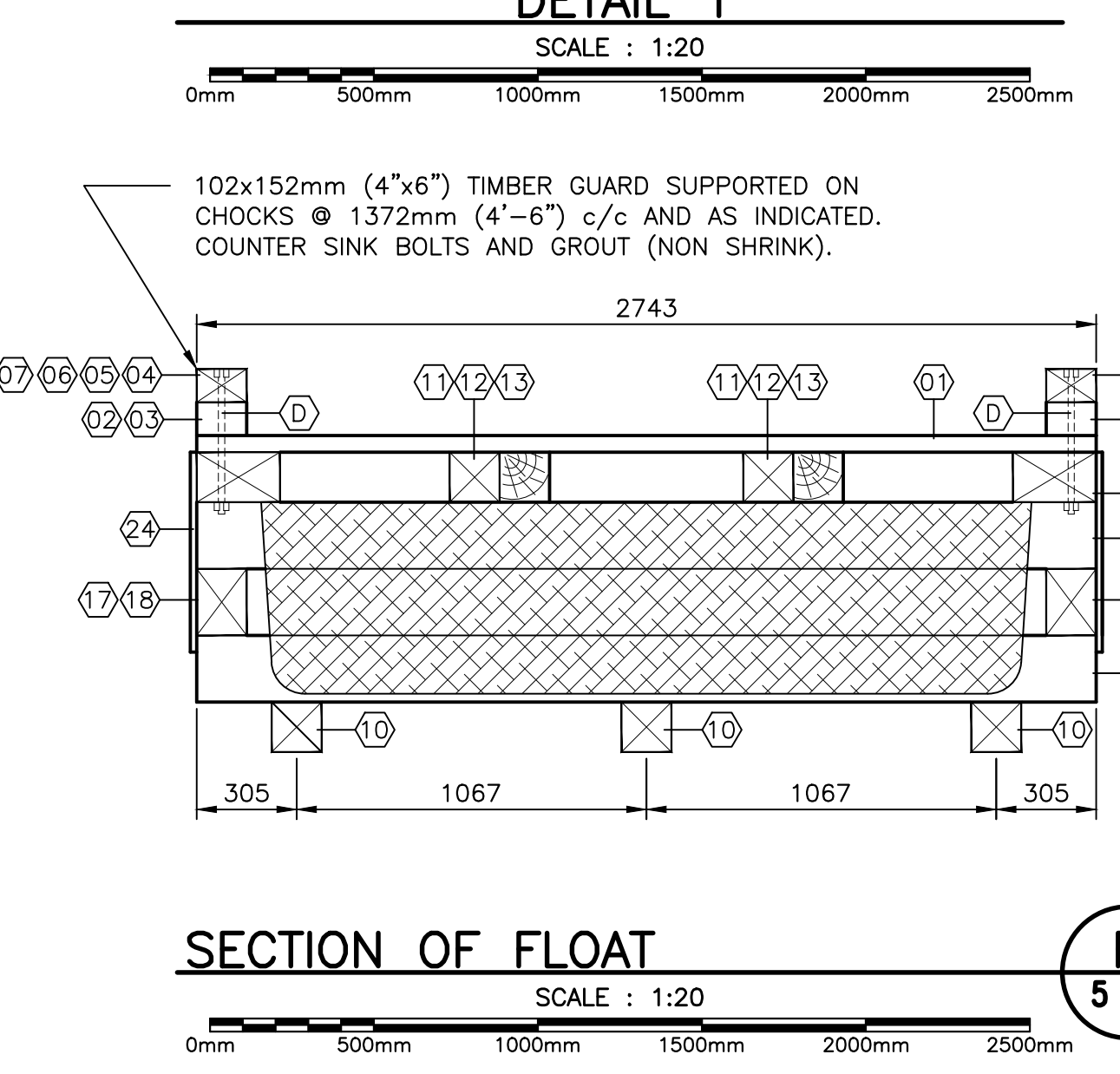
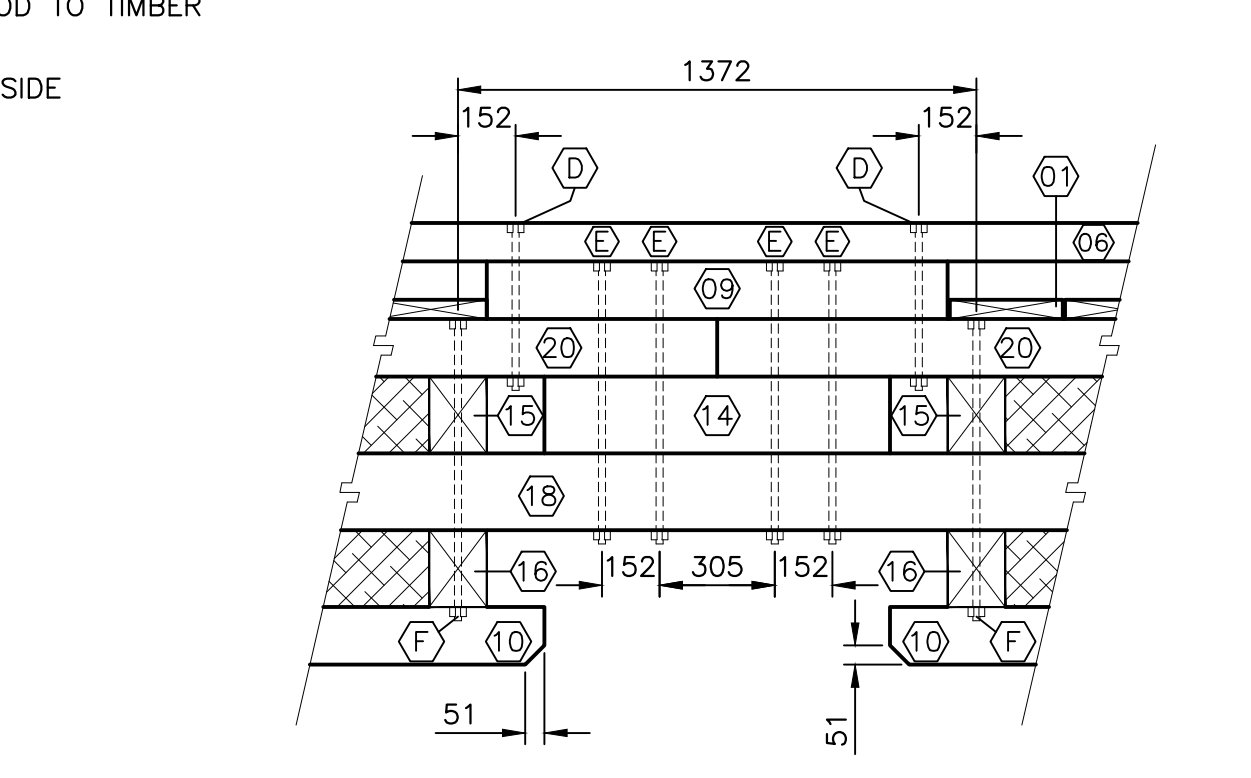
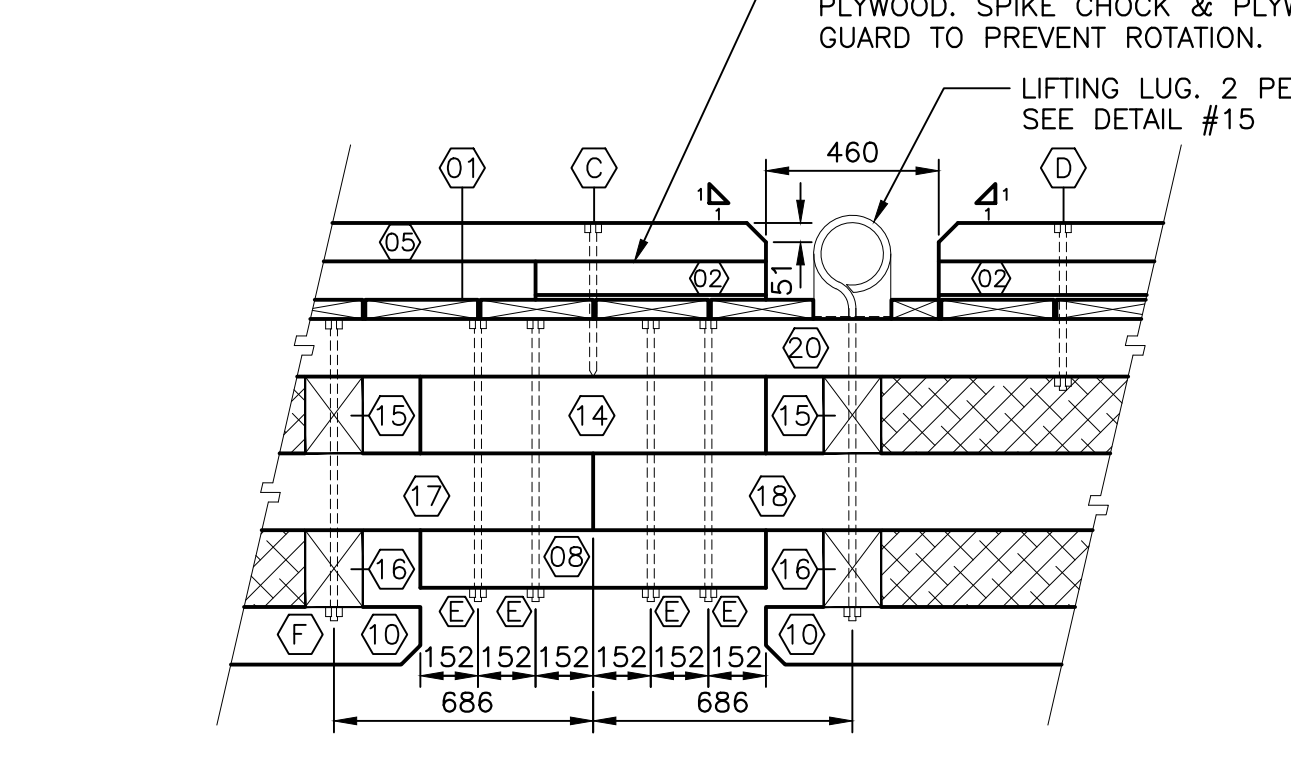
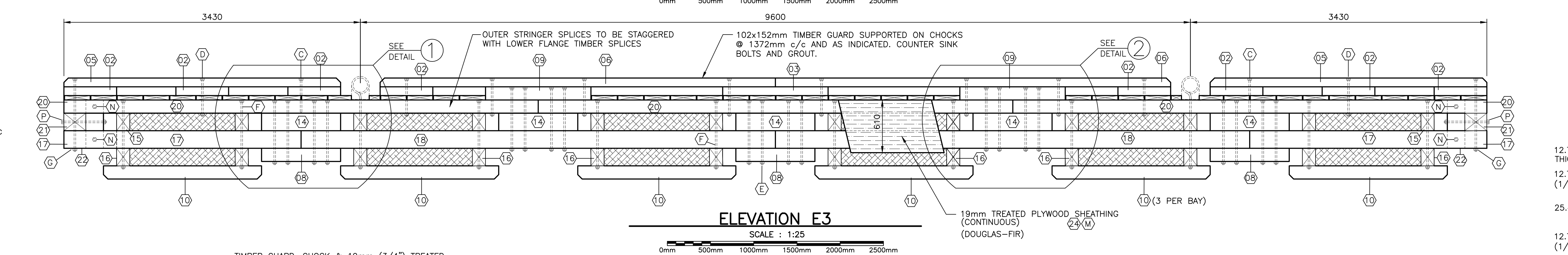
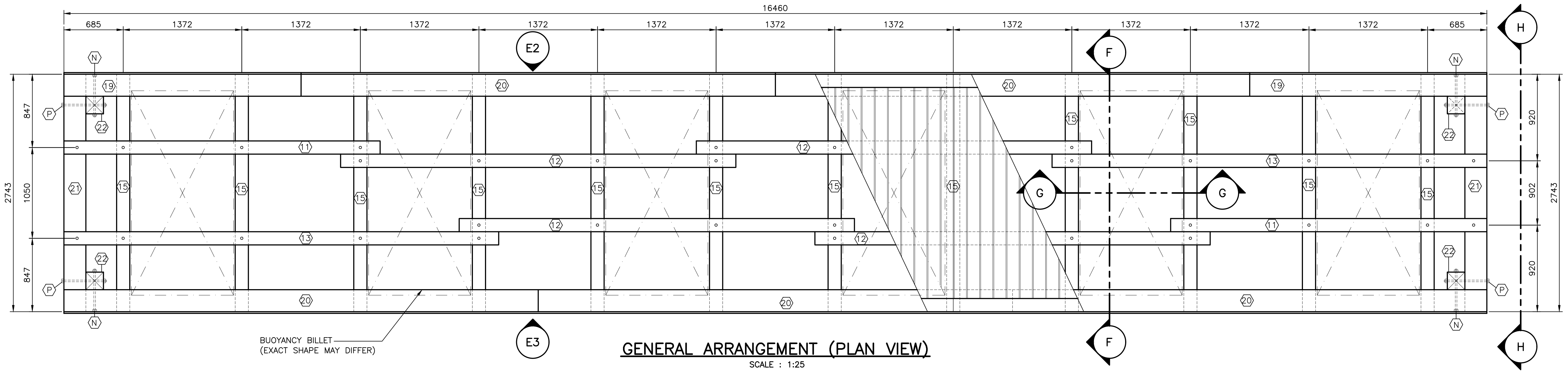
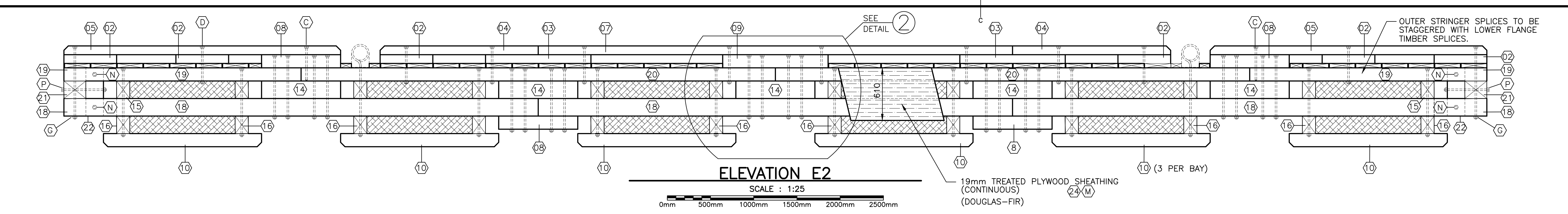
ALUMINUM CHECKER PLATE HINGE DETAIL 12
SCALE : 1:5
0mm 100mm 200mm 300mm 400mm 500mm



(13 REQ'D)
FLOAT TO FLOAT CONNECTION BOLTS DETAIL 13
SCALE : 1:5
0mm 100mm 200mm 300mm 400mm 500mm

0	ISSUED FOR TENDER	NOV 1 2019
revisions		date
project		
FLOATING WHARVES CONSTRUCTION & INSTALLATION MAIN-A-DIEU CAPE BRETON, CO., NS		
drawing		
desin		
CONNECTION PLATES AND ASSEMBLY DETAILS		
designed E. COPELAND		
date OCTOBER 2019		
drawn A. ARSENAULT		
date OCTOBER 2019		
approved		
date		
Tender		
Project Manager		
Administrateur de projet		
project number		
no. du projet		
723078		
drawing no.		
no. du dessin		
M4 of M6		

- NOTES:**
1. ALL TIMBER IS PRESSURE TREATED TO CSA-080-M1983, TABLE 1, WATER BOURNE PRESERVATIVES-C.C.A.
 2. ALL HARDWARE ITEMS INCLUDING MACHINE BOLTS, DRIFT BOLTS, NUTS, WASHERS, SPIKES, LIFTING LUGS, ETC. ARE TO BE FABRICATED FROM MEDIUM OR MILD STEEL CONFORMING TO ASTM-A307-80.
 3. ALL HARDWARE SUPPLIED BY CONTRACTOR. ITEMS ARE TO BE HOT DIP GALVANIZED WITH A MINIMUM COATING OF 810g/m CONFORMING TO CSA-G164 LATEST EDITION.
 4. BUOYANCY BILLETS: TO BE SUPPLIED BY THE CONTRACTOR. TO BE APPROVED BY DEPARTMENT REPRESENTATIVE.
 5. IF FLOATING WHARVES ARE BOOMED INTO HARBOUR BASIN, A SPREADER BAR (MIN. 27 FEET LONG) IS REQUIRED. ANY DAMAGE AS THE RESULT OF NO SPREADER USED WILL BE PAID BY THE OPERATOR.



BILL OF MATERIALS
QUANTITY FOR ONE (1) FLOATING WHARF (EXCLUDING FLOAT #5)

ITEM No.	HARDWARE DESCRIPTION	QUANTITY	ITEM No.	TREATED TIMBER DESCRIPTION	QUANTITY
A	12.7x254mm (1/2"x10") DRIFT BOLT	34	01	38x140x2740mm (2"x6"x9'-0") DECKING	115
B	19x406.4mm (3/4"x16") M.B. c/w 152.4mm (6") THREAD	36	02	102x152x610mm (4"x6"x2'-0") CHOCKING	14
C	19x406.4mm (3/4"x16") LAG SCREW	4	03	102x152x1220mm (4"x6"x4'-0") CHOCKING	3
D	19x457.2mm (3/4"x18") M.B. c/w 152.4mm (6") THREAD	20	04	102x152x1830mm (4"x6"x6'-0") TIMBER-GUARD	2
E	19x812.8mm (3/4"x32") M.B. c/w 152.4mm (6") THREAD	40	05	102x152x3200mm (4"x6"x10'-6") TIMBER-GUARD	4
F	19x863.6mm (3/4"x34") M.B. c/w 152.4mm (6") THREAD	20	06	102x152x4572mm (4"x6"x15'-0") TIMBER-GUARD	2
G	19x914.4mm (3/4"x36") M.B. c/w 152.4mm (6") THREAD	4	07	102x152x5986mm (4"x6"x18'-0") TIMBER-GUARD	1
H	LIFTING LUG c/w HEX NUT & WASHERS SEE DETAIL #15	4	08	152x152x914mm (6"x6"x3'-0") CHOCK BLOCK	7
J	19.05mm (3/4") HEX NUT-TAPPED OVERSIZE TDS	144	09	152x152x1220mm (6"x6"x4'-0") CHOCK/SPLICE BLOCK	3
K	6.35x76.2mm# (1/4"x3") WASHER c/w 22.2mm# 7/8" CENTER HOLE	288	10	152x152x1830mm (6"x6"x6'-0") SKID	18
L	101.6mm (4") GALV. COMMON SPIKE	690	11	152x152x3658mm (6"x6"x12'-0") STRINGER	2
M	76.2mm (3") STAINLESS STEEL SCREW (OVERSIZE HEAD)	250	12	152x152x4572mm (6"x6"x15'-0") STRINGER	4
N	19x558.8mm (3/4"x22") M.B. c/w 152.4mm (6") THREAD	8	13	152x152x5030mm (6"x6"x16'-6") STRINGER	2
P	19x660.4mm (3/4"x26") M.B. c/w 152.4mm (6") THREAD	4	14	152x203x914mm (6"x8"x3'-0") SPLICE BLOCK	10
Q	16x6mm (5/8") GALV. LAG BOLT c/w WASHER	24	15	152x203x2743mm (6"x8"x9'-0") CROSS TIE	12
			16	152x229x2743mm (6"x9"x9'-0") CROSS TIE	12
			17	152x229x2743mm (6"x9"x9'-0") FLANGE	2
			18	152x229x5486mm (6"x9"x18'-0") FLANGE	5
			19	152x254x2743mm (6"x10"x9'-0") OUTER STRINGER	2
			20	152x254x5486mm (6"x10"x18'-0") OUTER STRINGER	2
R	19x406.4mm (3/4"x16") M.B. c/w 152.4mm (6") THREAD	46	21	203x305x2743mm (8"x12"x9'-0") END CROSS TIE	5
S	19x660.4mm (3/4"x26") M.B. c/w 152.4mm (6") THREAD	2	22	203x203x560mm (8"x8"x1'-10") BINDER POST	4
			23	102x203x610mm (4"x8"x2'-0") SPACER BLOCK	4
			24	19x1219x2438mm (3/4"x4'-0"x8'-0") DOUGLAS-FIR TREATED PLYWOOD	7

CONNECTION PLATE ASSEMBLY BOLTS
QUANTITY FOR CONNECTION PLATES ASSEMBLIES

ITEM No.	HARDWARE DESCRIPTION	QUANTITY
R	19x406.4mm (3/4"x16") M.B. c/w 152.4mm (6") THREAD	46
S	19x660.4mm (3/4"x26") M.B. c/w 152.4mm (6") THREAD	2

0 ISSUED FOR TENDER NOV 1 2019

revisions: [table with columns for revision, date, and description]

project: **FLOATING WHARVES CONSTRUCTION & INSTALLATION MAIN-A-DIEU CAPE BRETON, CO., NS**

drawing: [table with columns for drawing, design, and date]

designed: E. COPELAND
date: OCTOBER 2019

drawn: A. ARSENAULT
date: OCTOBER 2019

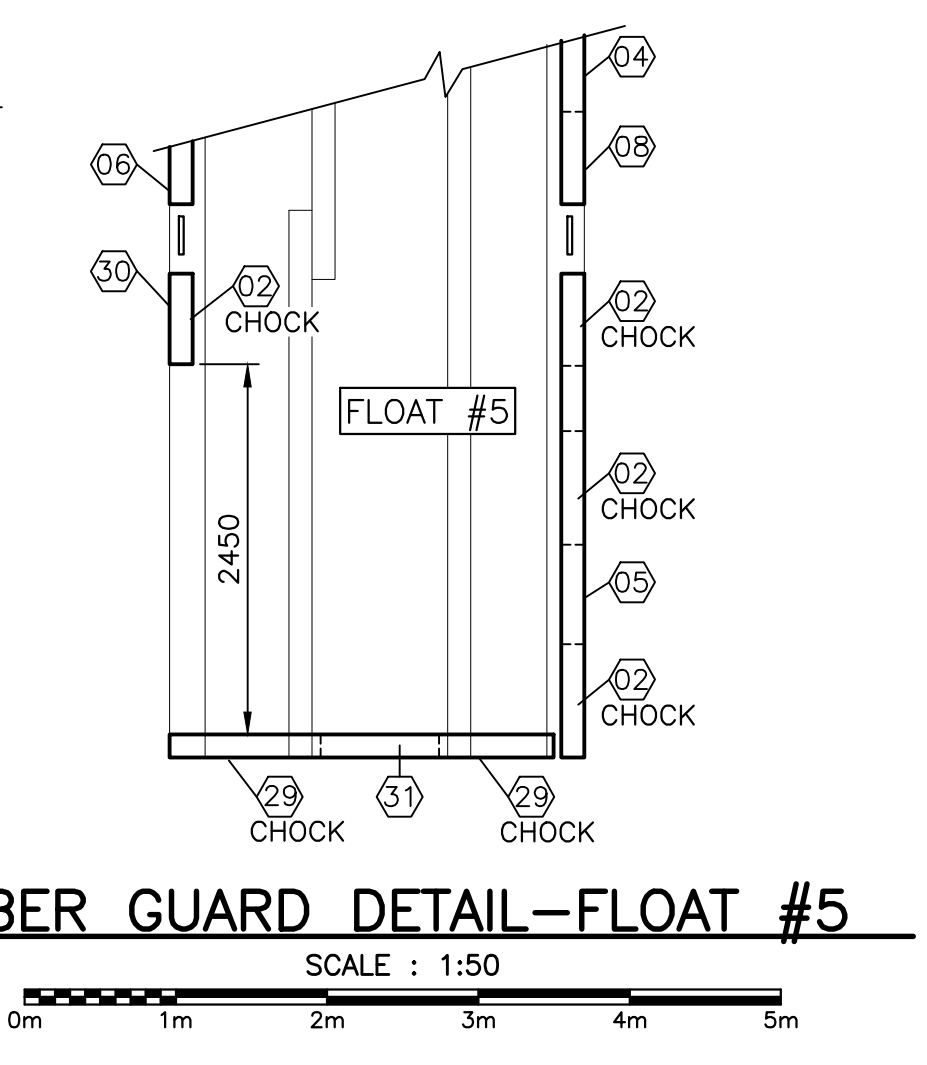
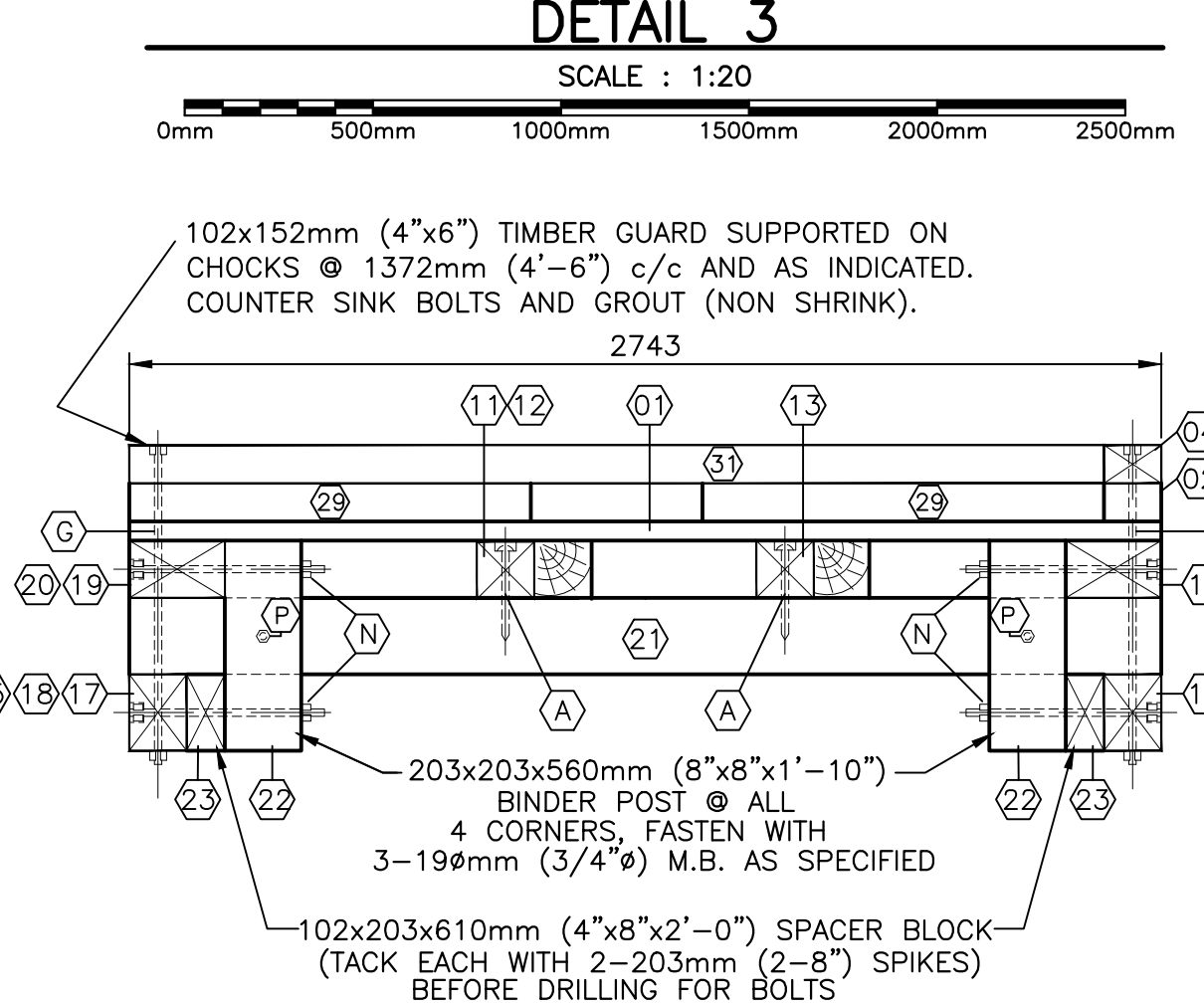
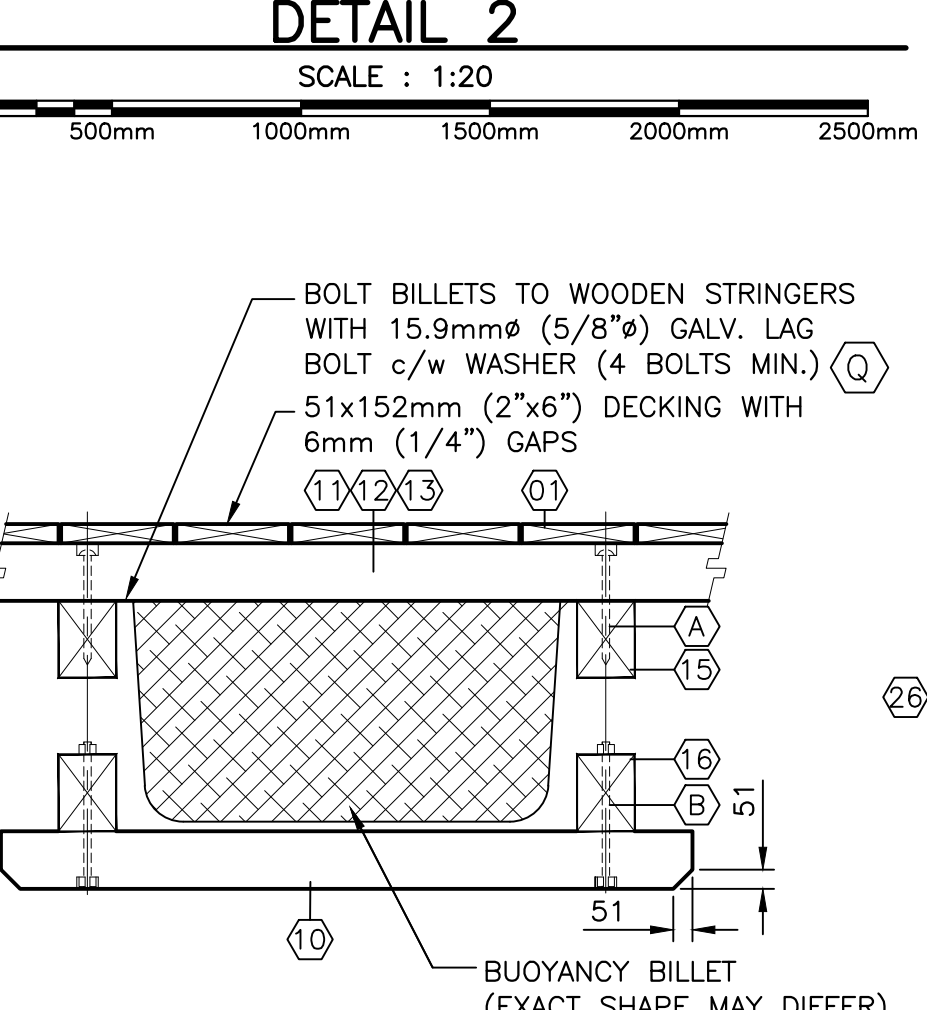
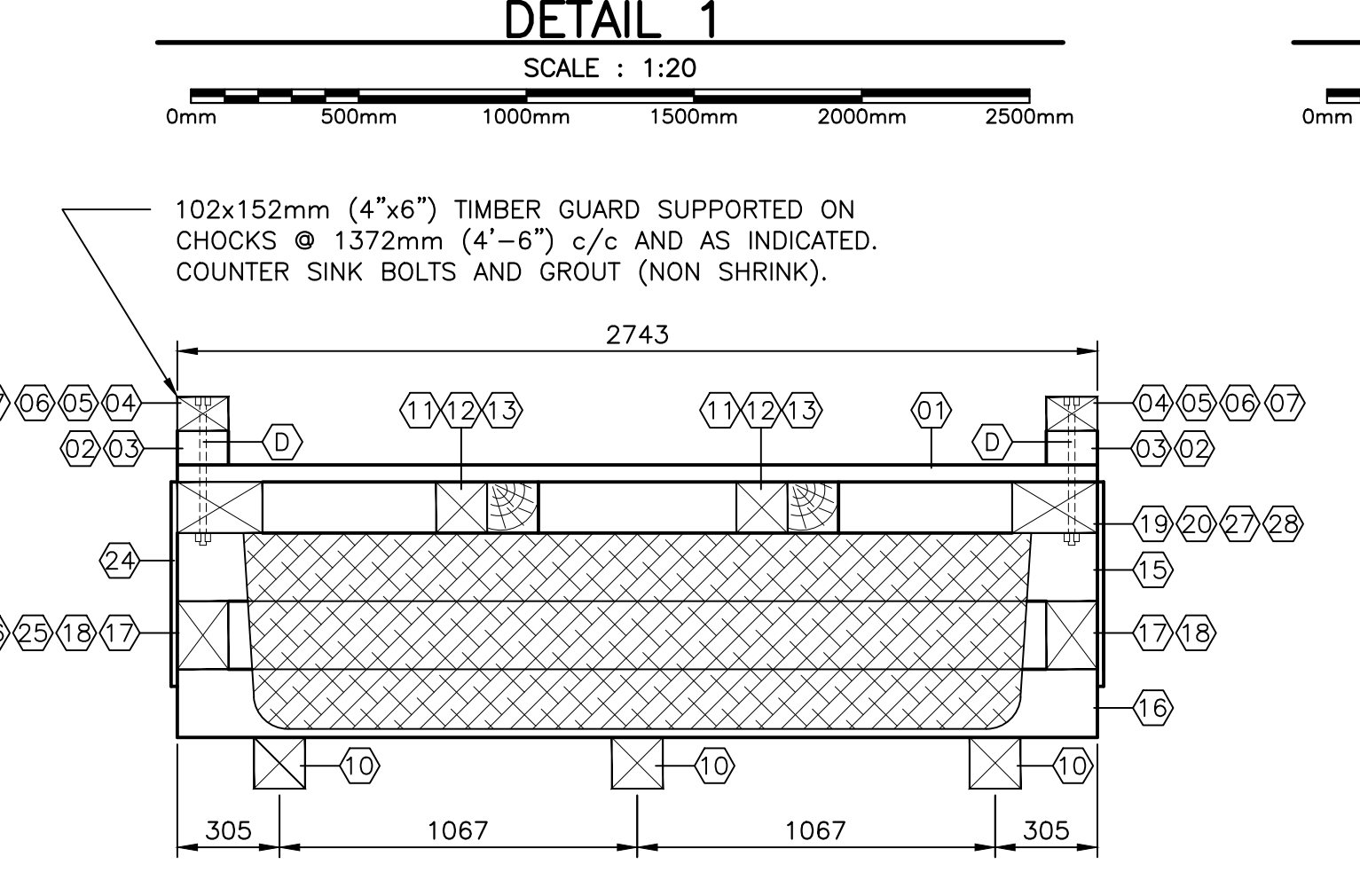
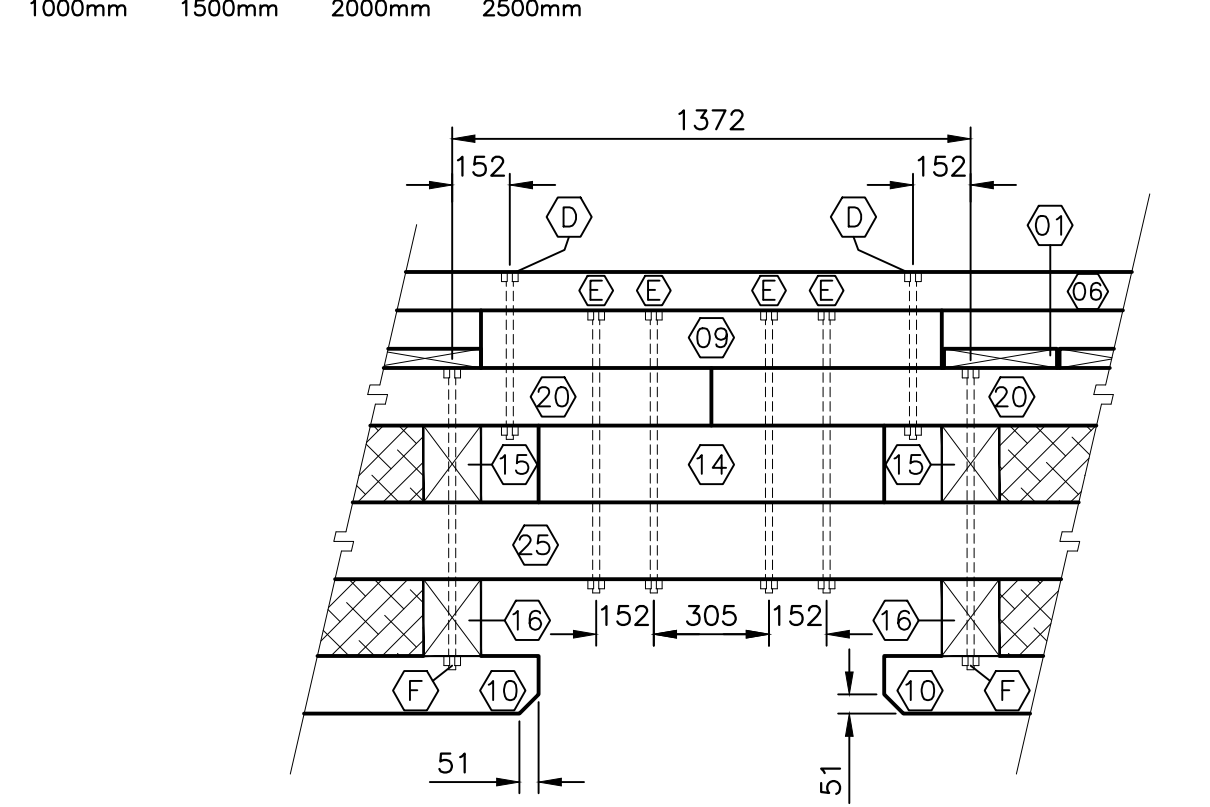
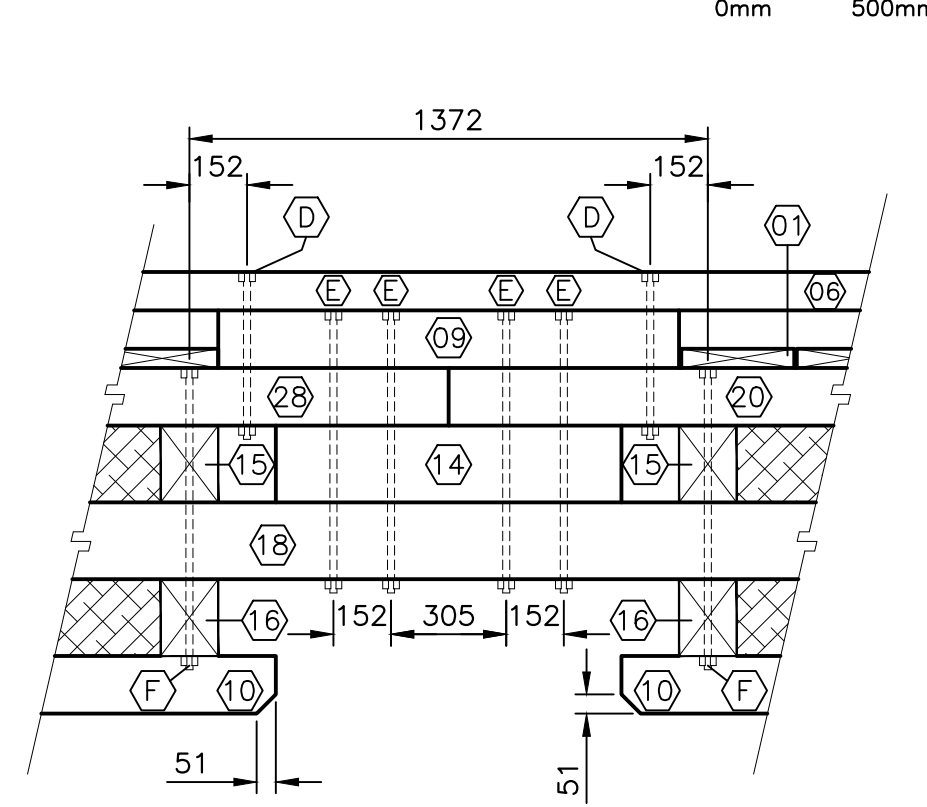
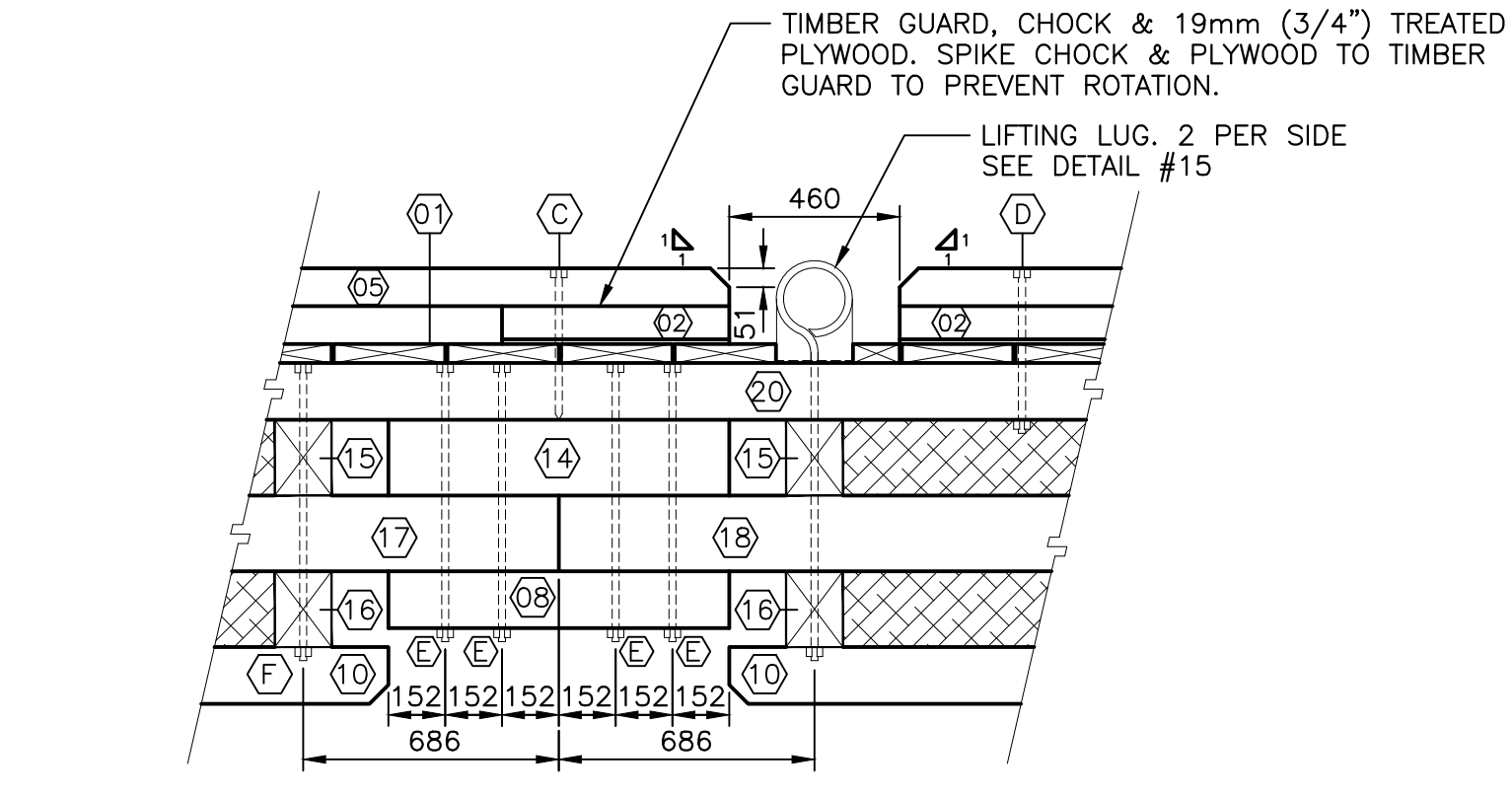
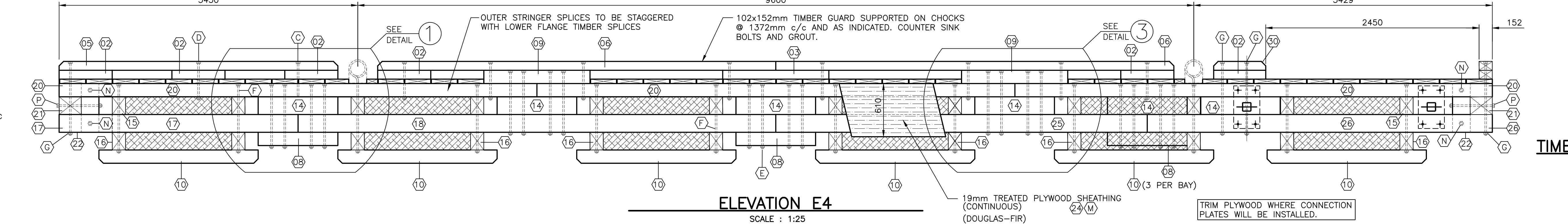
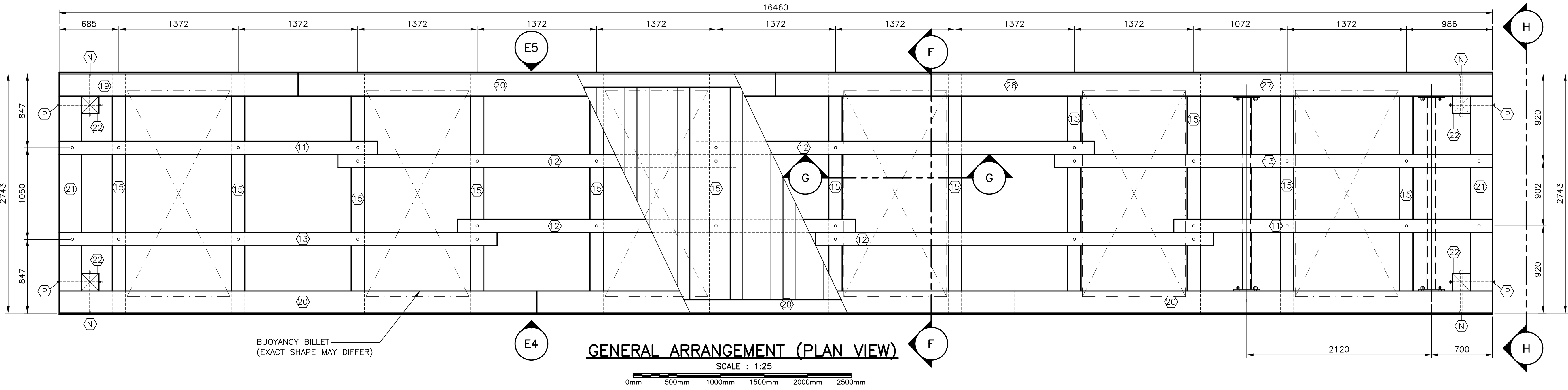
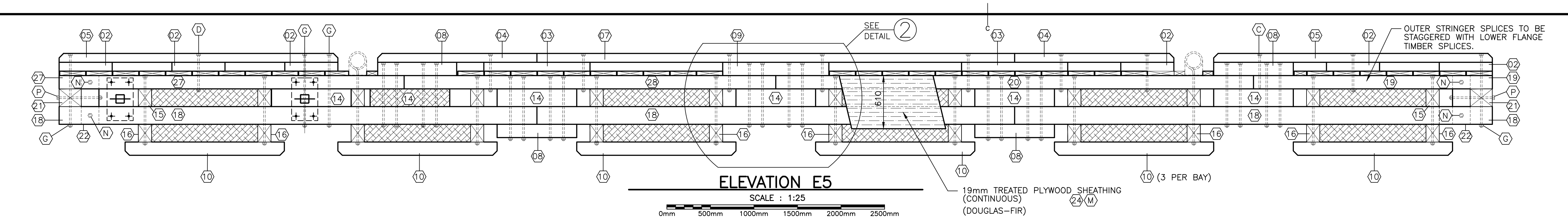
approved: [table with columns for approval, date, and signature]

Project Manager: [table with columns for project manager, date, and signature]

723078

M5 of M6

- NOTES:**
1. ALL TIMBER IS PRESSURE TREATED TO CSA-080-M1983, TABLE 1, WATER BOURNE PRESERVATIVES-C.C.A.
 2. ALL HARDWARE ITEMS INCLUDING MACHINE BOLTS, DRIFT BOLTS, NUTS, WASHERS, SPIKES, LIFTING LUGS, ETC. ARE TO BE FABRICATED FROM MEDIUM OR MILD STEEL CONFORMING TO ASTM-A307-80.
 3. ALL HARDWARE SUPPLIED BY CONTRACTOR. ITEMS ARE TO BE HOT DIP GALVANIZED WITH A MINIMUM COATING OF 610g/m CONFORMING TO CSA-G164 LATEST EDITION.
 4. BUOYANCY BILLETS: TO BE SUPPLIED BY THE CONTRACTOR. TO BE APPROVED BY DEPARTMENT REPRESENTATIVE.
 5. IF FLOATING WHARVES ARE BOOMED INTO HARBOUR BASIN. A SPREADER BAR (MIN. 27 FEET LONG) IS REQUIRED. ANY DAMAGE AS THE RESULT OF NO SPREADER USED WILL BE PAID BY THE OPERATOR.
 6. NEW FLOATS #5 TO INCLUDE GALV. STEEL STIFFENING ARMS (2 TOTAL) REFER TO DETAIL 4 ON SHEET M4.



BILL OF MATERIALS
QUANTITY FOR FLOATING WHARF #5

ITEM No.	HARDWARE DESCRIPTION	QUANTITY	ITEM No.	TREATED TIMBER DESCRIPTION	QUANTITY
A	12.79x254mm (1/2"x10") DRIFT BOLT	34	01	38x140x2740mm (2"x6"x9'-0") DECKING	115
B	19x406.4mm (3/4"x16") M.B. c/w 152.4mm (6") THREAD	36	02	102x152x610mm (4"x6"x2'-0") CHOCKING	12
C	19x406.4mm (3/4"x16") LAG SCREW	2	03	102x152x1220mm (4"x6"x4'-0") CHOCKING	3
D	19x457.2mm (3/4"x18") M.B. c/w 152.4mm (6") THREAD	19	04	102x152x1830mm (4"x6"x6'-0") TIMBER-GUARD	2
E	19x812.8mm (3/4"x32") M.B. c/w 152.4mm (6") THREAD	32	05	102x152x3200mm (4"x6"x10'-6") TIMBER-GUARD	3
F	19x863.6mm (3/4"x34") M.B. c/w 152.4mm (6") THREAD	20	06	102x152x4572mm (4"x6"x15'-0") TIMBER-GUARD	2
G	19x914.4mm (3/4"x36") M.B. c/w 152.4mm (6") THREAD	8	07	102x152x5986mm (4"x6"x18'-0") TIMBER-GUARD	1
H	LIFTING LUG c/w HEX NUT & WASHERS SEE DETAIL #15	4	08	152x152x914mm (6"x6"x3'-0") CHOCK BLOCK	7
J	19.05mm (3/4") HEX NUT-TAPPED OVERSIZE TDS	144	09	152x152x1220mm (6"x6"x4'-0") CHOCK/SPLICE BLOCK	3
K	6.35x76.2mm (1/4"x3") WASHER c/w 22.2mm (7/8") CENTER HOLE	288	10	152x152x1830mm (6"x6"x6'-0") SKID	18
L	101.6mm (4") GALV. COMMON SPIKE	690	11	152x152x3658mm (6"x6"x12'-0") STRINGER	2
M	76.2mm (3") STAINLESS STEEL SCREW (OVERSIZE HEAD)	250	12	152x152x4572mm (6"x6"x15'-0") STRINGER	4
N	19x558.8mm (3/4"x22") M.B. c/w 152.4mm (6") THREAD	8	13	152x152x5030mm (6"x6"x16'-6") STRINGER	2
P	19x660.4mm (3/4"x26") M.B. c/w 152.4mm (6") THREAD	4	14	152x203x914mm (6"x8"x3'-0") SPLICE BLOCK	12
Q	160mm (5/8") GALV. LAG BOLT c/w WASHER	24	15	152x203x2743mm (6"x8"x9'-0") CROSS TIE	12
			16	152x229x2743mm (6"x9"x9'-0") CROSS TIE	12
			17	152x229x2743mm (6"x9"x9'-0") FLANGE	4
			18	152x229x5486mm (6"x9"x18'-0") FLANGE	1
			19	152x254x2743mm (6"x10"x9'-0") OUTER STRINGER	1
			20	152x254x5486mm (6"x10"x18'-0") OUTER STRINGER	4
			21	203x305x2743mm (8"x12"x9'-0") END CROSS TIE	2
			22	203x203x560mm (8"x8"x1'-10") BINDER POST	4
			23	102x203x610mm (4"x8"x2'-0") SPACER BLOCK	4
			24	19x1219x2438mm (3/4"x4'-0"x8'-0") DOUGLAS-FIR TREATED PLYWOOD	7
			25	152x229x2743mm (6"x9"x9'-0") FLANGE	1
			26	152x229x5486mm (6"x9"x18'-0") FLANGE	1
			27	152x254x3962mm (6"x10"x13'-0") OUTER STRINGER	1
			28	152x254x4267mm (6"x10"x14'-0") OUTER STRINGER	1
			29	152x152x1067mm (6"x6"x3'-6") CHOCK/SPLICE BLOCK	2
			30	102x152x610mm (4"x6"x2'-0") SMALL TIMBER GUARD	1
			31	102x152x2590mm (4"x6"x8'-6") MEDIUM TIMBER GUARD	1

0 ISSUED FOR TENDER NOV 1 2019

FLOATING WHARVES CONSTRUCTION & INSTALLATION MAIN-A-DIEU CAPE BRETON, CO., NS

FLOAT #5 PLAN VIEW, ELEVATIONS, SECTIONS AND DETAILS

designed E. COPELAND
date OCTOBER 2019
drawn A. ARSENAULT
date OCTOBER 2019

approved
date
Tender
Project Manager
project number
723078
drawing no. M6 of M6