

NOTES:

1. VERIFY ALL EQUIPMENT WITH MANUFACTURERS CERTIFIED DRAWINGS. ARRANGEMENT BASED ON EQUIPMENT SHOWN. UPDATE TO SUIT SELECTED EQUIPMENT.
2. PROVIDE AND INSTALL ALL EQUIPMENT, SHAFTS, COUPLINGS, ETC. IN ACCORDANCE WITH MANUFACTURER AND CLASS REQUIREMENTS, TO THE SATISFACTION OF THE MANUFACTURER AND ATTENDING SURVEYOR.
3. INSTALL ALL MACHINERY AND EQUIPMENT WITH ADEQUATE ACCESS FOR SERVICE AND MAINTENANCE. PROVIDE SUFFICIENT ALLOWANCE FOR COMPONENT WITHDRAWAL, INCLUDING APPROPRIATE LIFTING GEAR.
4. PROVIDE GUARDS IN WAY OF HOT OR ROTATING MACHINERY TO PROTECT PERSONNEL FROM INJURY.
5. STERN TUBE AND BEARING BOSS MATERIAL TO MATCH HULL.
6. SEE RAL SPEC SECTION 380: PAINTING AND PROTECTION, FOR PAINTING REQUIREMENTS.

NOTES:

1. VÉRIFIER L'ÉQUIPEMENT D'APRÈS LES PLANS CERTIFIÉS DES FABRICANTS. L'AMÉNAGEMENT EST BASÉ SUR L'ÉQUIPEMENT INDIQUÉ. MODIFIER LE PLAN SELON L'ÉQUIPEMENT SÉLECTIONNÉ.
2. FOURNIR ET INSTALLER L'ÉQUIPEMENT (ARBRES, COUPLAGE, ETC.) CONFORMÉMENT AUX EXIGENCES DU FABRICANT ET AUX NORMES DE CLASSIFICATION. INSTALLER L'ÉQUIPEMENT À LA SATISFACTION DU FABRICANT ET DE L'INSPECTEUR PRÉSENT.
3. INSTALLER LA MACHINERIE ET LES PIÈCES D'ÉQUIPEMENT DE FAÇON À PERMETTRE LEUR ACCÈS ET ENTRETIEN, AINSI QUE LE MONTAGE ET DÉMONTAGE DE LEUR COMPOSANTS.
4. INSTALLER DES RAMBARDES AUTOUR DE LA MACHINERIE EN ROTATION ET À TEMPÉRATURE ÉLEVÉE AFIN D'ÉVITER DE BLESSER LE PERSONNEL.
5. LE MATÉRIEL DU TUBE D'ÉTAMBOT ET DU BOSSAGE DE PALIER DOIT CORRESPONDRE À CELUI DE LA COQUE.
6. CONSULTER LA SECTION 380 DES SPÉCIFICATIONS DU NAVIRE POUR LES DÉTAILS ET EXIGENCES DE PEINTURE.

CALCULATIONS:

REF: BUREAU VERITAS RULES AND REGULATIONS FOR THE CLASSIFICATION OF SHIPS, APRIL 2007
PART D, CHAPTER 21, SEC 3, ARTICLE 7
7.2.2 SHAFT LINERS

$$e = (d+230) / 32$$

where:

d =

ACTUAL DIAMETER OF THE PROPELLER SHAFT,
IN mm.

=

102

mm

e =

REQUIRED SHAFT LINER THICKNESS

=

10.4

mm

7.2.3 STERN BEARING a) WATER LUBRICATION

$$L = 2 \times d$$

d =

RULE DIAMETER OF THE PROPELLER SHAFT

=

102

mm

L =

REQUIRED STERN BEARING LENGTH

=

204

mm

0

PART B, CHAPTER 10, SEC 3, ARTICLE 1
1.2.3 SCANTLINGS OF PROPELLER SHAFT BOSSING

$$t \geq 0.33 \text{ dp}$$

dp =

PROPELLER SHAFT DIAMETER

=

102

mm

t =

REQUIRED SHAFT BOSSING THICKNESS

=

33.66

mm

00



CHOSEN SHAFT BOSSING THICKNESS

=

34

mm

CE PLAN EST BASÉ SUR LE PLAN NO. 209-028. IL A ÉTÉ DÉVELOPPÉ UNIQUEMENT PAR MERIDIEN MARITIME À DES FINS DE PRODUCTION AVEC LA PERMISSION ÉCRITE DE ROBERT ALLAN LTÉE. ROBERT ALLAN LTÉE N'ASSUME AUCUNE RESPONSABILITÉ QUELLE QU'ELLE SOIT POUR CE PLAN MODIFIÉ. LA PROPRIÉTÉ INTELLECTUELLE DU PLAN CI-DÉCRIT APPARTIENT UNIQUEMENT À ROBERT ALLAN LTÉE ET AU CANADA. IL EST DÉFENDU DE REPRODUIRE LES PLANS ET LES DEVIS, CI-INCLUS, EN ENTIER OU EN PARTIE, OU DE LES PARTAGER AVEC UN TIERS SANS LA PERMISSION ÉCRITE DES PROPRIÉTAIRES.

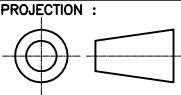
4	AS CONSTRUCTED	MM	MAY 2012
3	ROPE GUARD	MM	APRIL 2012
REV.	REVISIONS	BY	DATE
		Garde côtière canadienne Canadian Coast Guard	
NAVIRE 25M VESSEL COQUE # / HULL # 008		PROJECT TITLE : Navire semi-hauturier de recherche halieutique Near Shore Fisheries Research Vessels	
PROJECT # : MR09-1113	DRAWING FILE : ISV22-52600RMM4.DWG	DATE : MAY 2012	
DRAWN BY :	DRAWING # : 52600	REV : 	SHEET : 1 OF 4



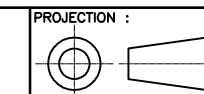
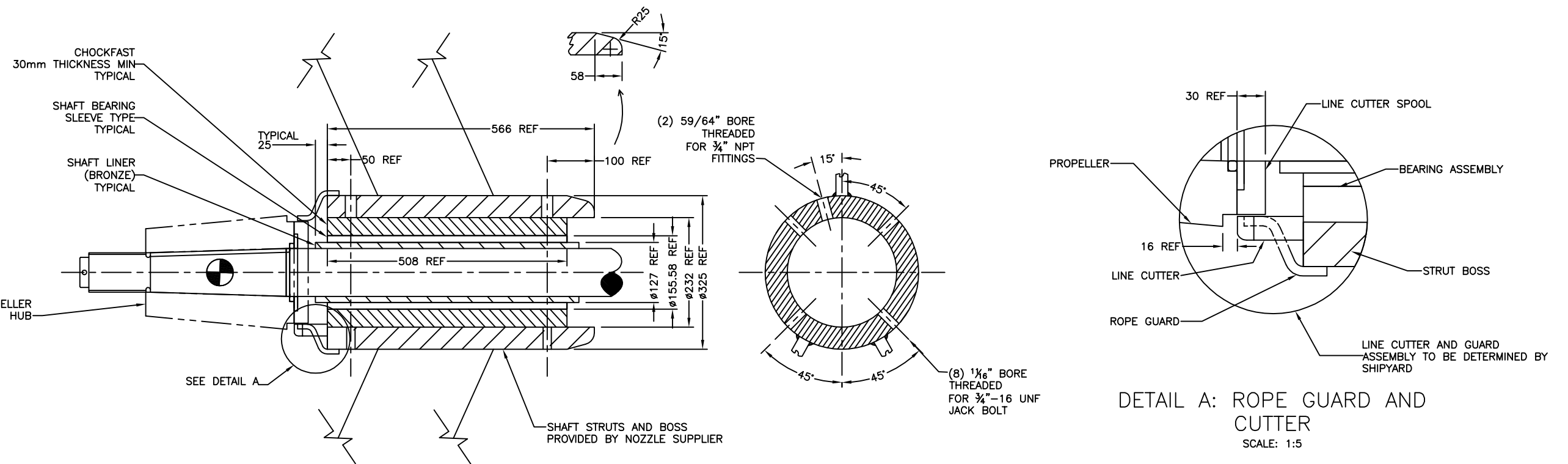
COMPANY :
MÉRIDIEN MARITIME
RÉPARATION

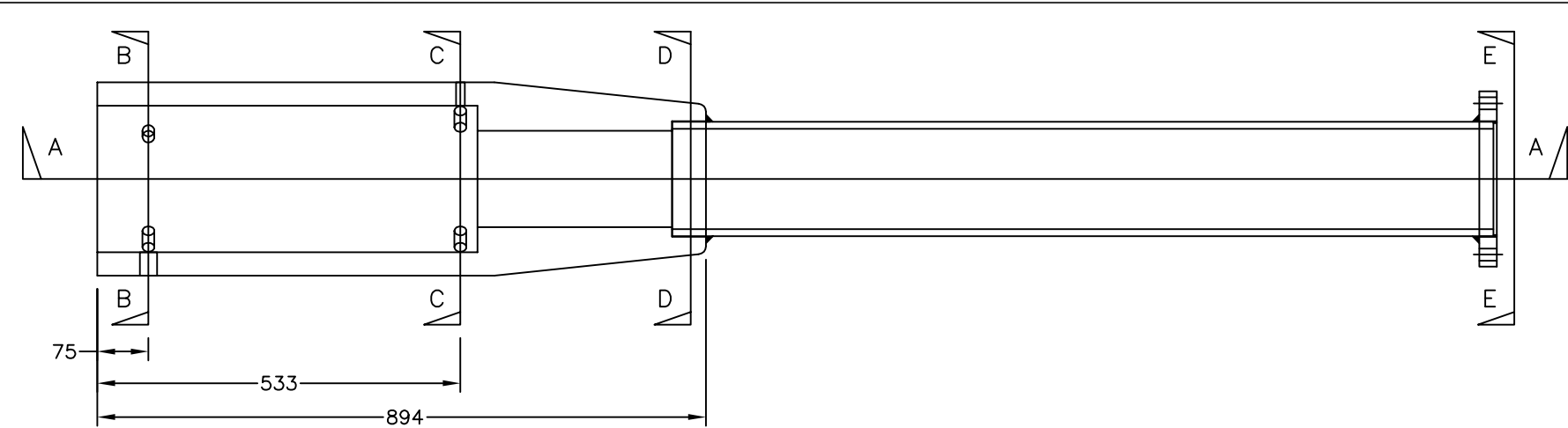
TITLE :
STERN TUBE & SHAFT BRACKET
ARRANGEMENT – 25M

© THIS DRAWING IS BASED ON ROBERT ALLAN Ltd. DESIGN NO. 209-028 AND HAS BEEN DEVELOPED BY MERIDIEN MARITIME FOR PRODUCTION PURPOSES ONLY, WITH THE WRITTEN CONSENT OF ROBERT ALLAN LTD. ROBERT ALLAN LTD ASSUME NO RESPONSIBILITY WHATSOEVER FOR THIS ALTERED DRAWING. THE INTELLECTUAL PROPERTY RIGHTS TO THE DESIGN DESCRIBED HEREIN BELONG EXCLUSIVELY TO ROBERT ALLAN LTD. AND CANADA. THE DRAWINGS AND SPECIFICATIONS CONTAINED HEREIN SHALL NOT BE REPRODUCED IN WHOLE OR IN PART, NOR SHALL THEY BE GIVEN TO ANY THIRD PARTIES WITHOUT WRITTEN PERMISSION FROM THE OWNERS (POUR LA TRADUCTION FRANCAISE, VOIR LA PREMIERE PAGE)

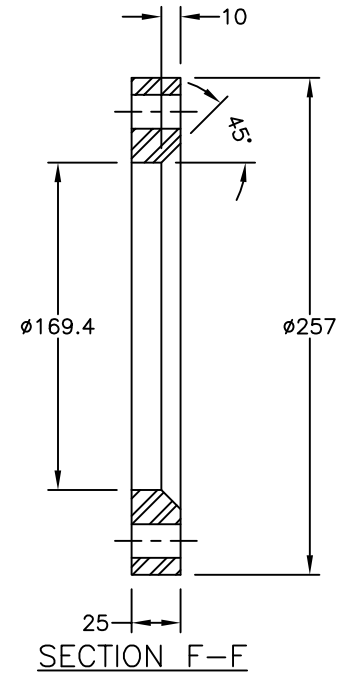
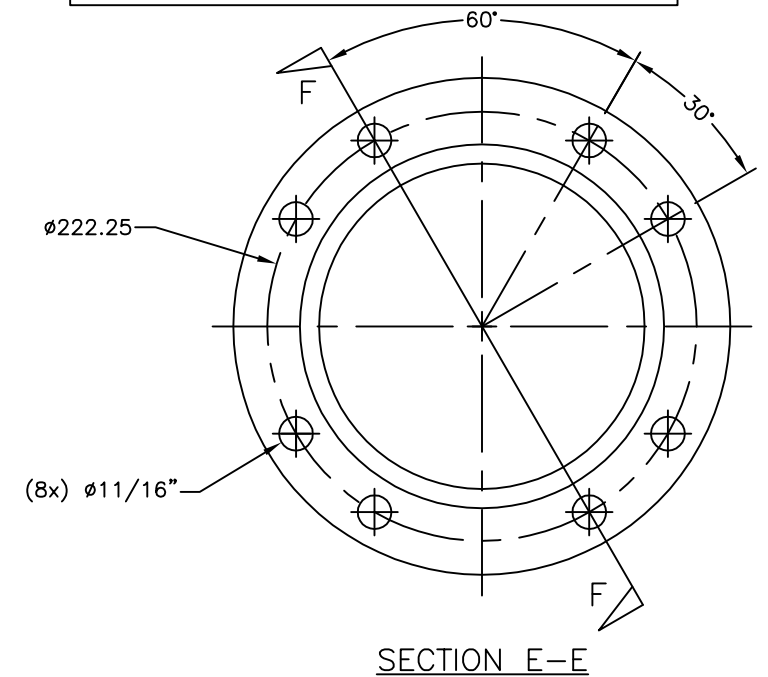
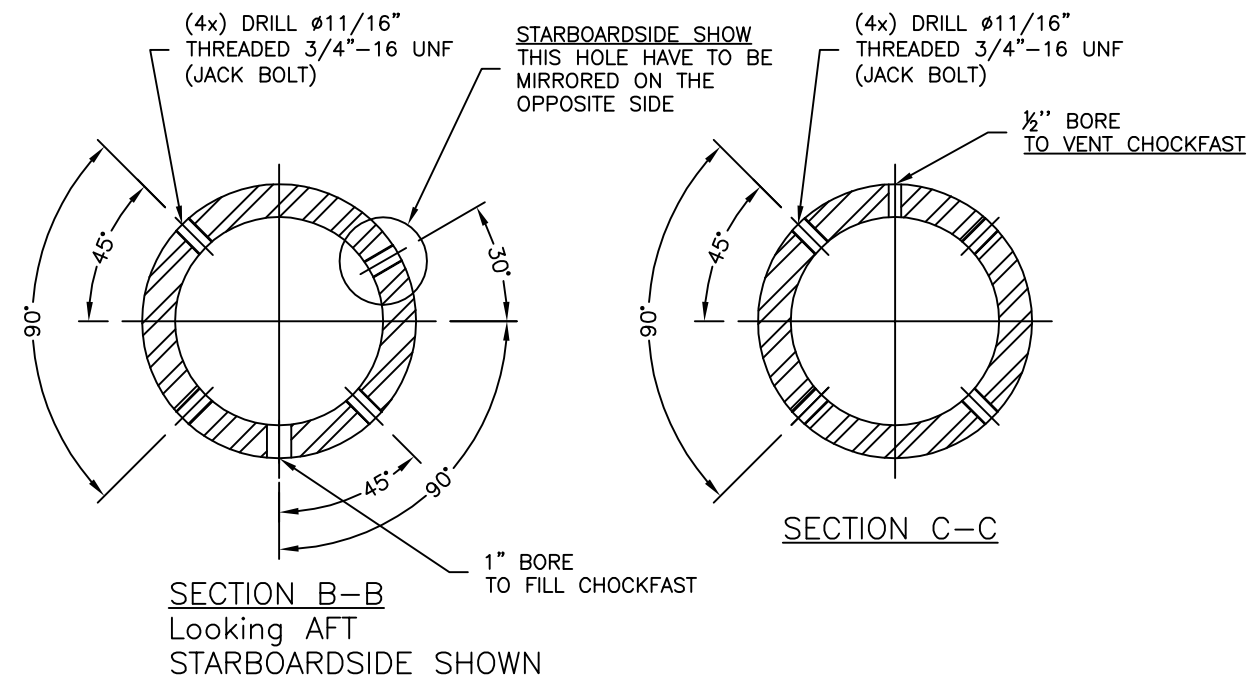
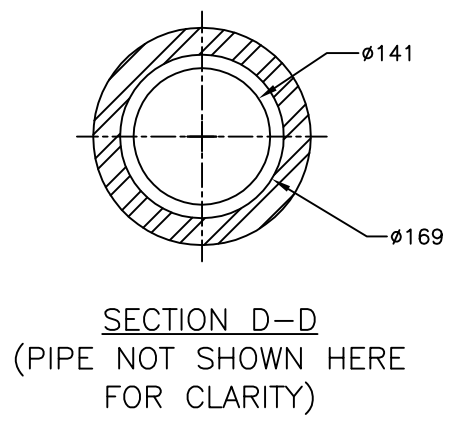
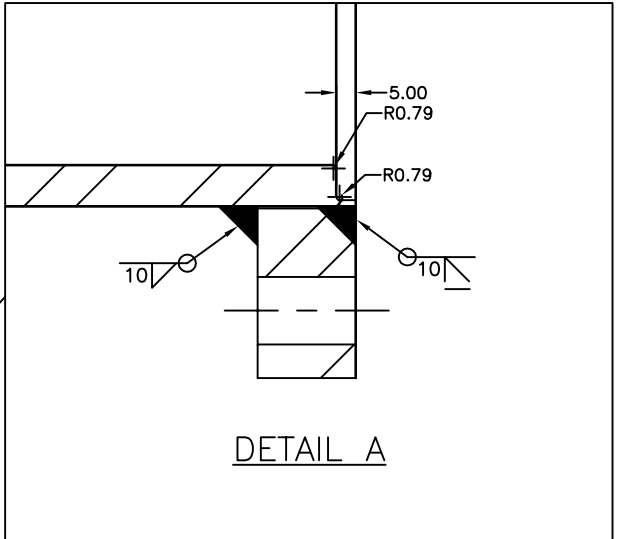
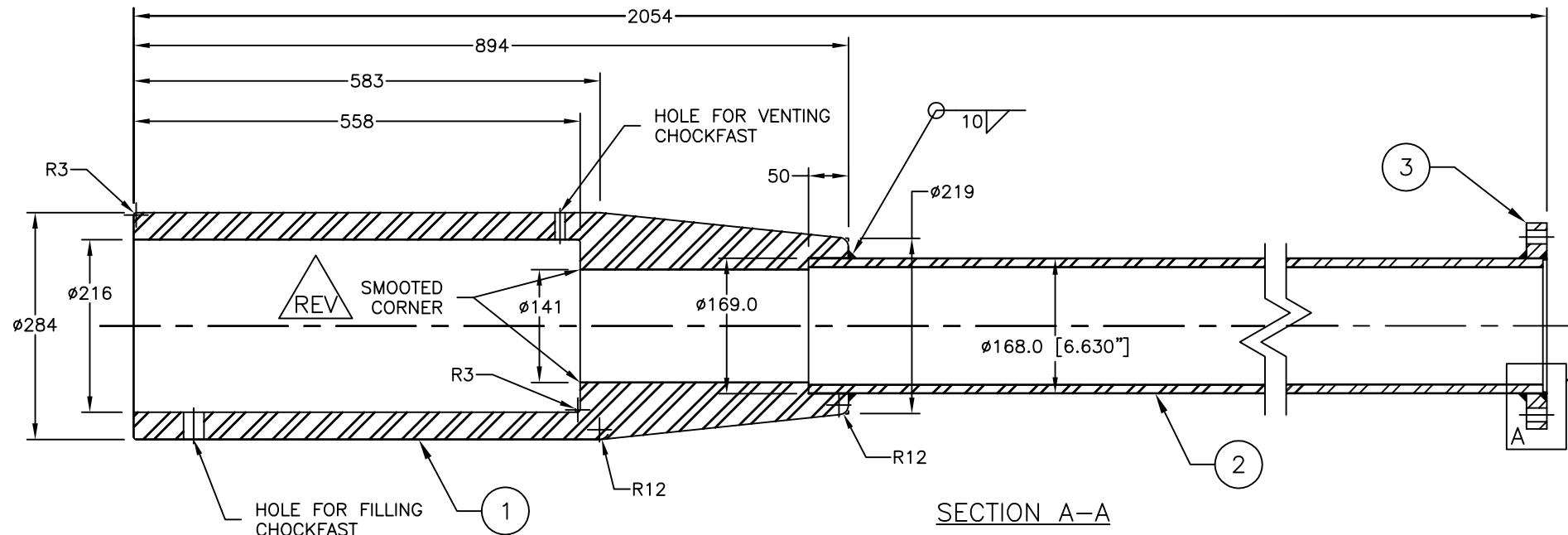



PROJECTION :

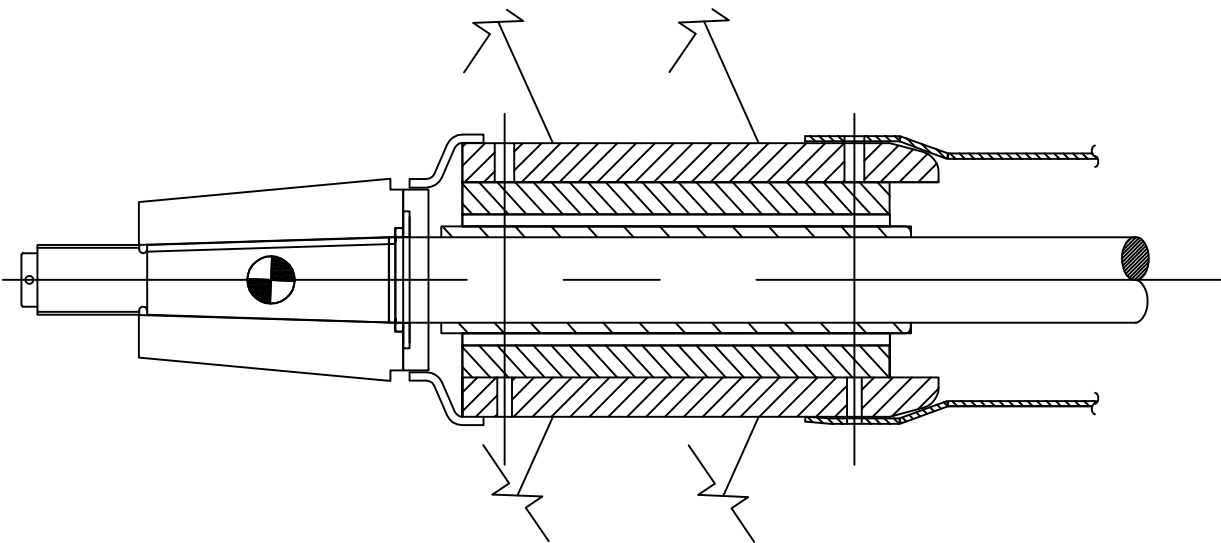




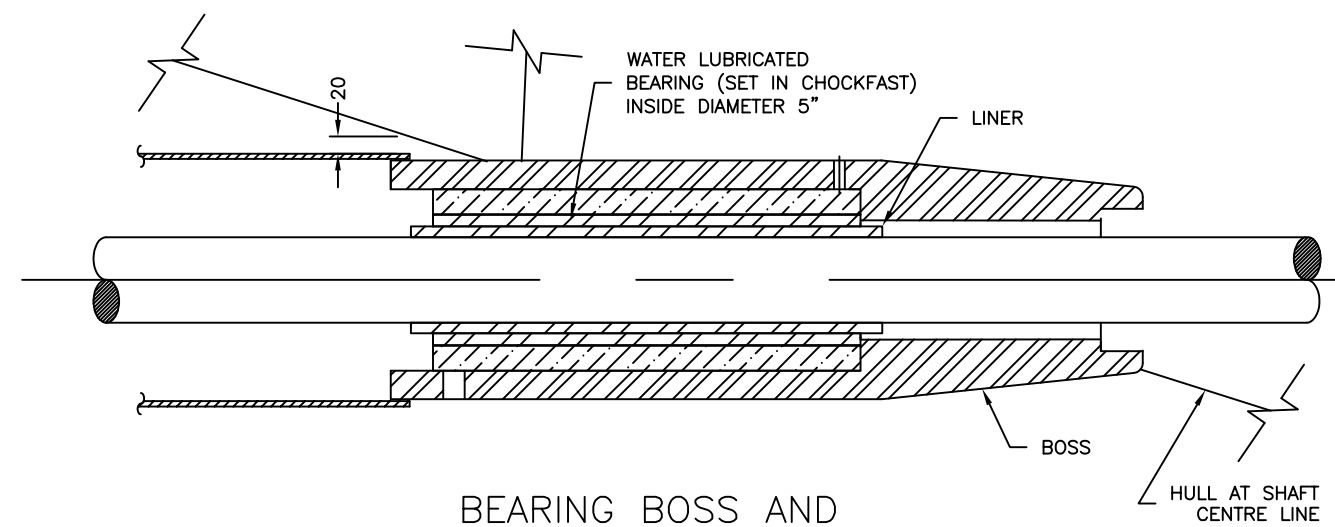
BILL OF MATERIAL			
ITEM	QTY	DESCRIPTION	MATERIAL
①	1	BOSS	STEEL ASTM 1018
②	1	PIPE 1211mm LENGTH	TUBING 6" SCH 80 Grade ASTM A-106
③	1	FLANGE	STEEL GRADE ABS A-36



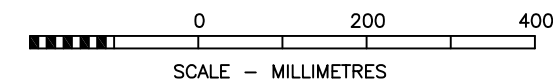
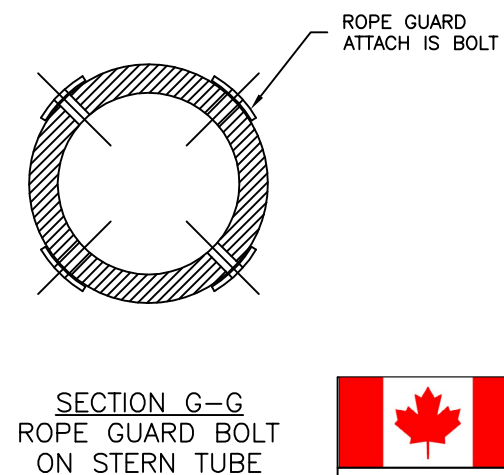
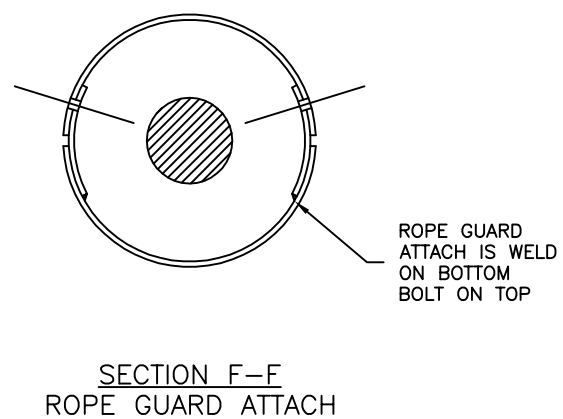
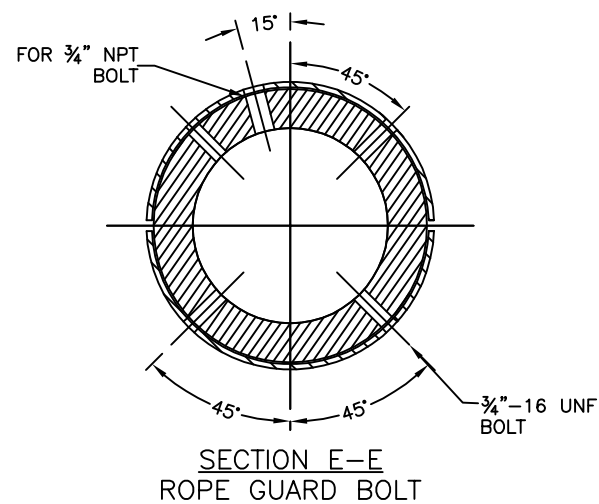
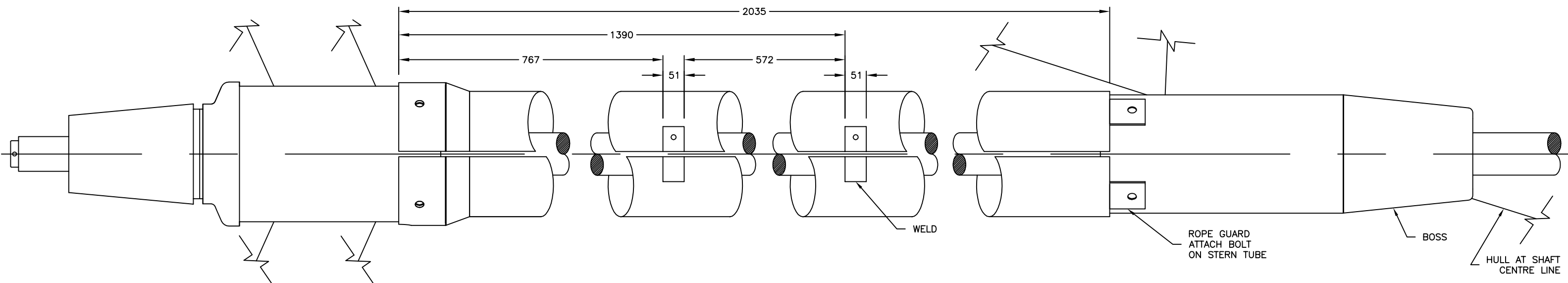
	Garde côtière canadienne Canadian Coast Guard		
	NAVIRE 25M VESSEL COQUE # / HULL # 008	PROJECT TITLE : Navire semi-hauturier de recherche halieutique Near Shore Fisheries Research Vessels	
PROJECT # : MR09-1113	DRAWING FILE : ISV22-52600RMM4.DWG	DATE : MAY 2012	
DRAWN BY :	DRAWING # : 52600	REV : 4	SHEET : 3 OF 4



PROPELLER SHAFT
WITH ROPE GUARD



BEARING BOSS AND
STERN TUBE WITH
ROPE GUARD DETAIL
PORT SIDE SHOWN, STBD SIMILAR



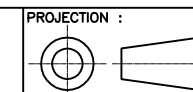
		Garde côtière canadienne Canadian Coast Guard	
NAVIRE 25M VESSEL COQUE # / HULL # 008		PROJECT TITLE : Navire semi-hauturier de recherche halieutique Near Shore Fisheries Research Vessels	
PROJECT # : MR09-1113	DRAWING FILE : ISV22-52600RMM4.DWG	DATE : MAY 2012	
DRAWN BY :	DRAWING # : 52600	REV : 4	SHEET : 4 OF 4



COMPANY :
MÉRIDIEN MARITIME
RÉPARATION

TITLE :
STERN TUBE & SHAFT BRACKET
ARRANGEMENT - 25M

© THIS DRAWING IS BASED ON ROBERT ALLAN Ltd. DESIGN NO. 209-028 AND HAS BEEN DEVELOPED BY MERIDIEN MARITIME FOR PRODUCTION PURPOSES ONLY, WITH THE WRITTEN CONSENT OF ROBERT ALLAN LTD. ROBERT ALLAN LTD ASSUME NO RESPONSIBILITY WHATSOEVER FOR THIS ALTERED DRAWING. THE INTELLECTUAL PROPERTY RIGHTS TO THE DESIGN DESCRIBED HEREIN BELONG EXCLUSIVELY TO ROBERT ALLAN LTD. AND CANADA. THE DRAWINGS AND SPECIFICATIONS CONTAINED HEREIN SHALL NOT BE REPRODUCED IN WHOLE OR IN PART, NOR SHALL THEY BE GIVEN TO ANY THIRD PARTIES WITHOUT WRITTEN PERMISSION FROM THE OWNERS (POUR LA TRADUCTION FRANCAISE, VOIR LA PREMIERE PAGE)



PROJECTION :