


NOTES:

1. IN ADDITION TO CENTER LINE BLOCKS, PROVIDE SUFFICIENT TRANSVERSE SUPPORT AT THE BILGE TO COUNTER HEELING LOADS.
2. BUILDER TO UPDATE THIS DRAWING TO INCLUDE NUMBER, TYPE AND LOCATION OF ALL HULL FITTINGS AND EQUIPMENT, INCLUDING TRANSDUCERS, O/B DISCHARGES, SEA CHESTS, DOCKING PLUGS AND SACRIFICIAL ANODES.
3. BUILDER TO UPDATE THIS DRAWING TO SHOW THE LIGHT SHIP WATERLINE AS VERIFIED BY THE VESSELS INCLINING.
4. BUILDER TO UPDATE THIS DRAWING TO SHOW HULL DIMENSIONS AS VERIFIED BY THE VESSELS FINAL HULL FORM.

NOTES:

1. EN PLUS DES BLOCS AXIAUX, FOURNIR UN RENFORCEMENT TRANSVERSAL ADÉQUAT AU NIVEAU DE LA CALE AFIN DE CONTRER LES CHARGES DE GITE.
2. LE CONSTRUCTEUR DEVRA METTRE À JOUR CE PLAN AFIN D'INCLURE LE NOMBRE, LE TYPE, ET LA POSITION DE TOUTES LES PIÈCES DE FIXATIONS ET ÉQUIPEMENTS, INCLUANT LES TRANSDUCTEURS, LES REFOULEMENTS À LA MER, LES PRISES D'EAU À LA MER, LES PRISES DE QUAI, ET LES ANODES SACRIFICIELLES.
3. LE CONSTRUCTEUR DEVRA METTRE À JOUR CE PLAN AFIN D'INCLURE LA LIGNE DE FLOTTAISON DE DÉPLACEMENT LÈGE RÉELLE VÉRIFIÉE LORS DE L'ESSAI D'INCLINAISON.
4. LE CONSTRUCTEUR DEVRA METTRE À JOUR CE PLAN AFIN D'INCLURE LES DIMENSIONS RÉELLES ET VÉRIFIÉES DE LA COQUE.

CE PLAN EST BASÉ SUR LE PLAN NO. 209-028. IL A ÉTÉ DÉVELOPPÉ UNIQUEMENT PAR MERIDIEN MARITIME À DES FINS DE PRODUCTION AVEC LA PERMISSION ÉCRITE DE ROBERT ALLAN LTÉE. ROBERT ALLAN LTÉE N'ASSUME AUCUNE RESPONSABILITÉ QUELLE QU'ELLE SOIT POUR CE PLAN MODIFIÉ. LA PROPRIÉTÉ INTELLECTUELLE DU PLAN CI-DÉCRIT APPARTIENT UNIQUEMENT À ROBERT ALLAN LTÉE ET AU CANADA. IL EST DÉFENDU DE REPRODUIRE LES PLANS ET LES DEVIS, CI-INCLUS, EN ENTIER OU EN PARTIE, OU DE LES PARTAGER AVEC UN TIERS SANS LA PERMISSION ÉCRITE DES PROPRIÉTAIRES.



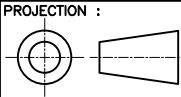
COMPANY :



MÉRIDIEN MARITIME
RÉPARATION

TITLE :

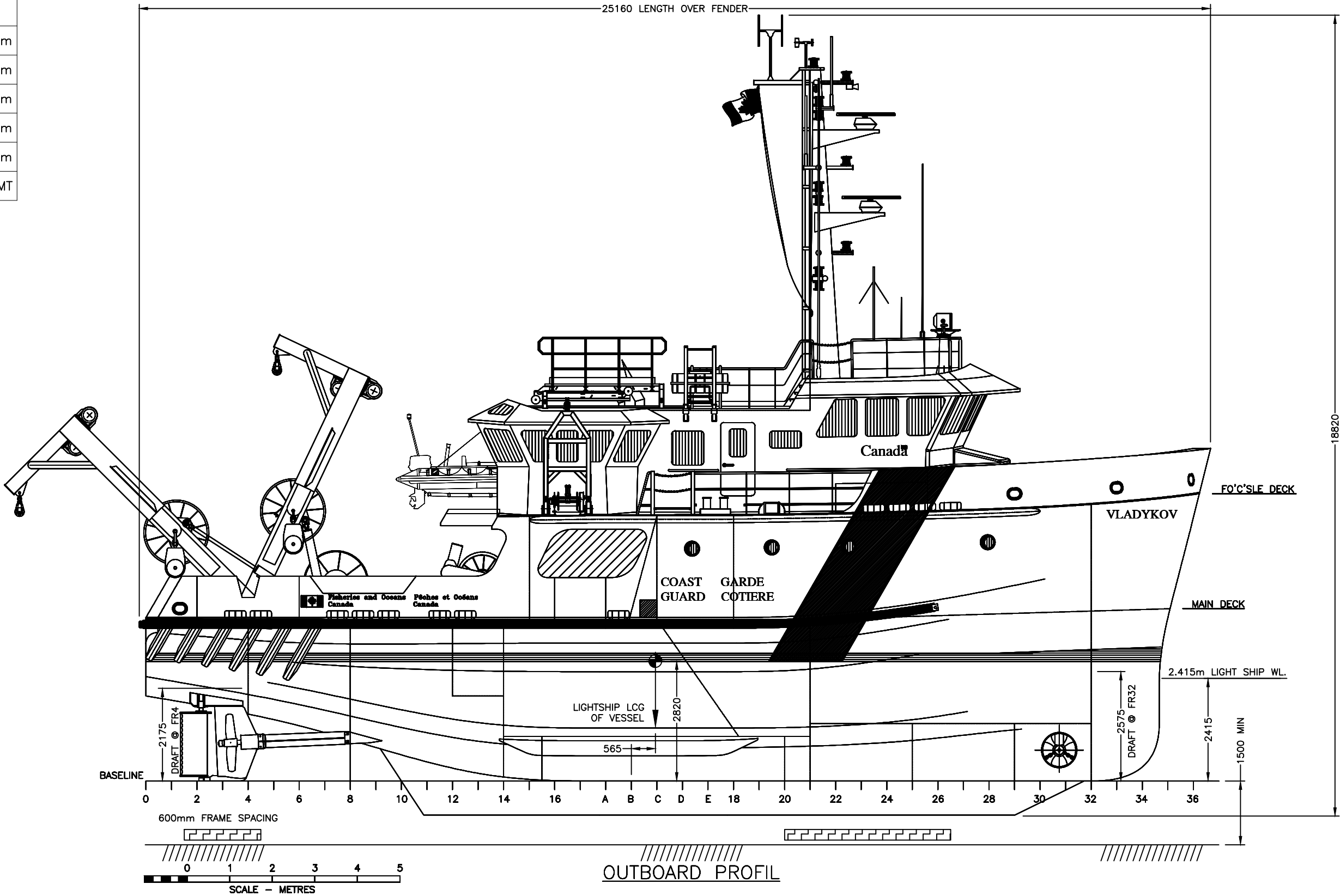
DOCKING PLAN – 25M

© THIS DRAWING IS BASED ON ROBERT ALLAN Ltd. DESIGN NO. 209-028 AND HAS BEEN DEVELOPED BY MERIDIEN MARITIME FOR PRODUCTION PURPOSES ONLY, WITH THE WRITTEN CONSENT OF ROBERT ALLAN LTD. ROBERT ALLAN LTD ASSUME NO RESPONSIBILITY WHATSOEVER FOR THIS ALTERED DRAWING. THE INTELLECTUAL PROPERTY RIGHTS TO THE DESIGN DESCRIBED HEREIN BELONG EXCLUSIVELY TO ROBERT ALLAN LTD. AND CANADA. THE DRAWINGS AND SPECIFICATIONS CONTAINED HEREIN SHALL NOT BE REPRODUCED IN WHOLE OR IN PART, NOR SHALL THEY BE GIVEN TO ANY THIRD PARTIES WITHOUT WRITTEN PERMISSION FROM THE OWNERS (POUR LA TRADUCTION FRANCAISE, VOIR LA PREMIERE PAGE)



3	AS CONSTRUCTED	MM	JAN 2012
REV.	REVISIONS	BY	DATE
	Garde côtière canadienne Canadian Coast Guard		
NAVIRE 25M VESSEL COQUE # / HULL # 008	PROJECT TITLE : Navire semi-hauturier de recherche halieutique Near Shore Fisheries Research Vessels		
PROJECT # : MRO9-1113	DRAWING FILE : ISV25-14110RMM3.DWG	DATE : 31/01/2012	
DRAWN BY :	DRAWING # : 14110	REV : 	SHEET : 1 OF 4

GENERAL PARTICULARS:	
LENGTH OVERALL	25.0 m
BEAM, MOULDED	9.2 m
BEAM, EXTREME	9.5 m
DEPTH, MOULDED	3.8 m
DRAFT, NAVIGATIONAL	3.6 m
LIGHTSHIP DISPLACEMENT	259.5 MT



Garde côtière canadienne
Canadian Coast Guard

NAVIRE 25M VESSEL
COQUE # / HULL #
008

PROJECT TITLE :
Navire semi-hauturier de recherche halieutique
Near Shore Fisheries Research Vessels

PROJECT # :
MR09-1113

DRAWING FILE :
ISV25-14110RMM3.DWG

DATE :
31/01/2012

DRAWN BY :

DRAWING # :
14110

REV :
3

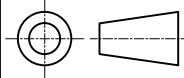
SHEET :
2 OF 4

COMPANY :
MÉRIDIEN MARITIME
RÉPARATION

TITLE :
DOCKING PLAN - 25M

© THIS DRAWING IS BASED ON ROBERT ALLAN Ltd. DESIGN NO. 209-028 AND HAS BEEN DEVELOPED BY MERIDIEN MARITIME FOR PRODUCTION PURPOSES ONLY, WITH THE WRITTEN CONSENT OF ROBERT ALLAN LTD. ROBERT ALLAN LTD ASSUME NO RESPONSIBILITY WHATSOEVER FOR THIS ALTERED DRAWING. THE INTELLECTUAL PROPERTY RIGHTS TO THE DESIGN DESCRIBED HEREIN BELONG EXCLUSIVELY TO ROBERT ALLAN LTD. AND CANADA. THE DRAWINGS AND SPECIFICATIONS CONTAINED HEREIN SHALL NOT BE REPRODUCED IN WHOLE OR IN PART, NOR SHALL THEY BE GIVEN TO ANY THIRD PARTIES WITHOUT WRITTEN PERMISSION FROM THE OWNERS (POUR LA TRADUCTION FRANCAISE, VOIR LA PREMIERE PAGE)

PROJECTION :

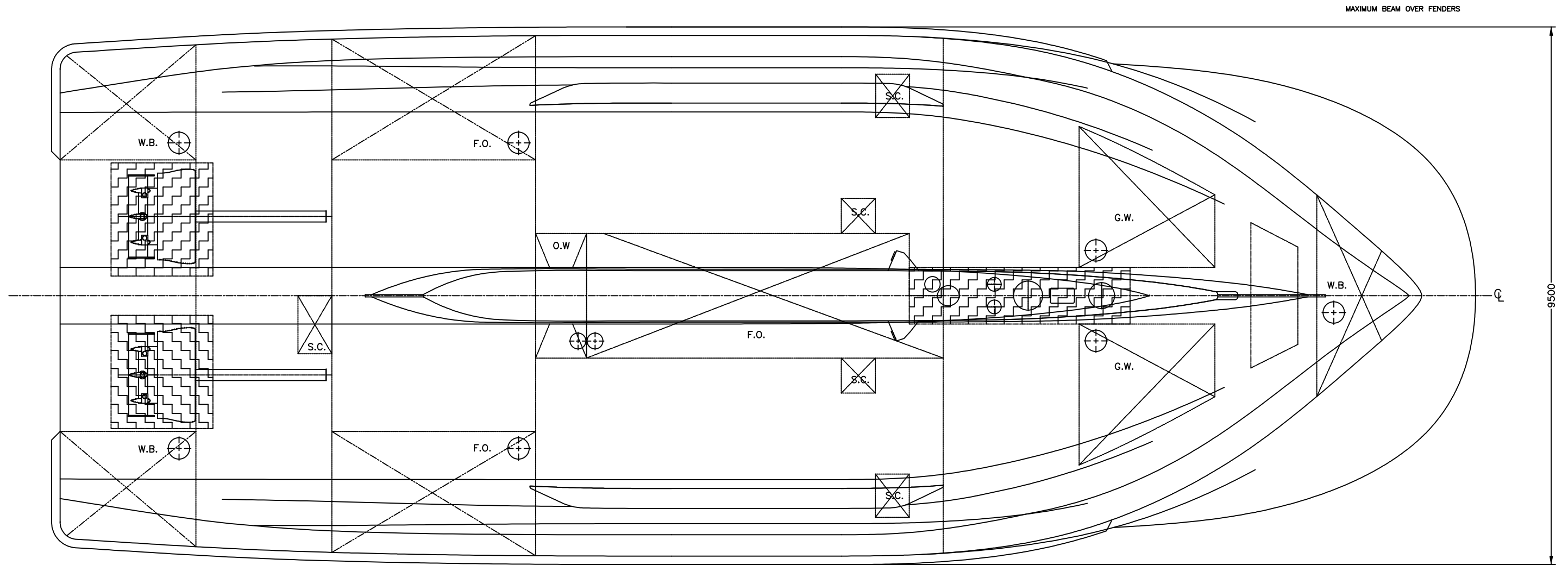




—NO BLOCKING AREA




—DOCKING PLUG NOMINAL LOCATION
BUILDER TO FINALIZE LOCATIONS TO MATCH AS BUILT VESSEL.



0 2 4 6 8 10 12 14 16 18 20 22 24 26 28 30 32 34 36

BOTTOM PLAN

0 1 2 3 4
SCALE — METRES

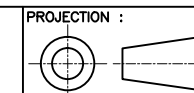
		Garde côtière canadienne Canadian Coast Guard	
NAVIRE 25M VESSEL COQUE # / HULL # 008		PROJECT TITLE : Navire semi-hauturier de recherche halieutique Near Shore Fisheries Research Vessels	
PROJECT # : MR09-1113	DRAWING FILE : ISV25-14110RMM3.DWG	DATE : 31/01/2012	
DRAWN BY :	DRAWING # : 14110	REV : 3	SHEET : 3 OF 4



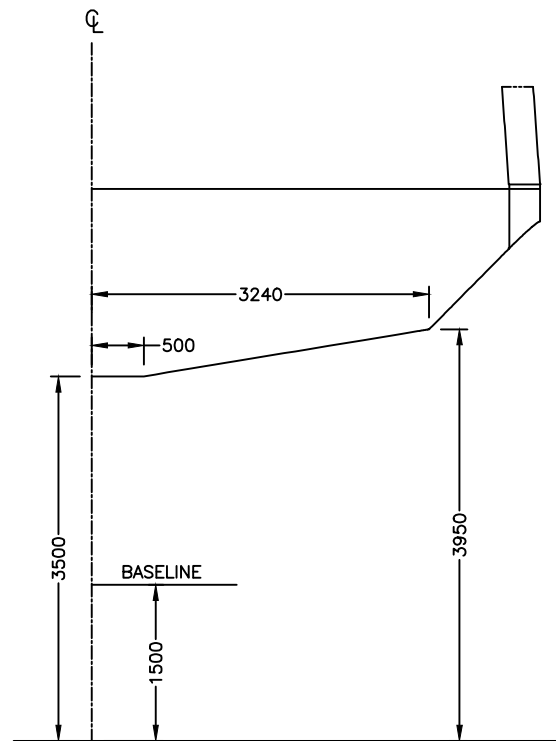
COMPANY :
**MÉRIDIEN MARITIME
RÉPARATION**

TITLE :
DOCKING PLAN — 25M

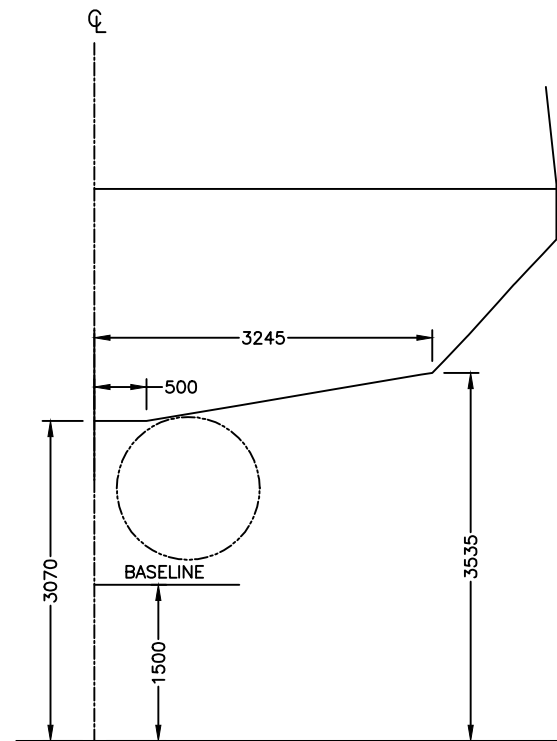
© THIS DRAWING IS BASED ON ROBERT ALLAN Ltd. DESIGN NO. 209-028 AND HAS BEEN DEVELOPED BY MERIDIEN MARITIME FOR PRODUCTION PURPOSES ONLY, WITH THE WRITTEN CONSENT OF ROBERT ALLAN LTD. ROBERT ALLAN LTD ASSUME NO RESPONSIBILITY WHATSOEVER FOR THIS ALTERED DRAWING. THE INTELLECTUAL PROPERTY RIGHTS TO THE DESIGN DESCRIBED HEREIN BELONG EXCLUSIVELY TO ROBERT ALLAN LTD. AND CANADA. THE DRAWINGS AND SPECIFICATIONS CONTAINED HEREIN SHALL NOT BE REPRODUCED IN WHOLE OR IN PART, NOR SHALL THEY BE GIVEN TO ANY THIRD PARTIES WITHOUT WRITTEN PERMISSION FROM THE OWNERS (POUR LA TRADUCTION FRANÇAISE, VOIR LA PREMIÈRE PAGE)



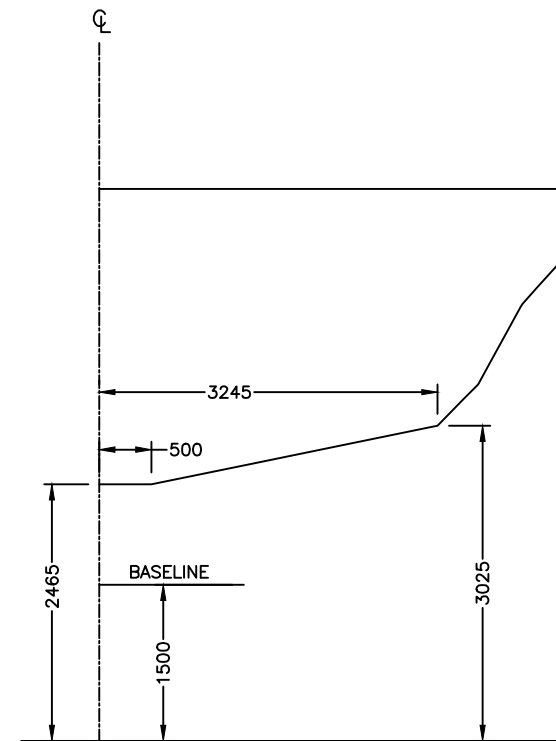
PROJECTION :



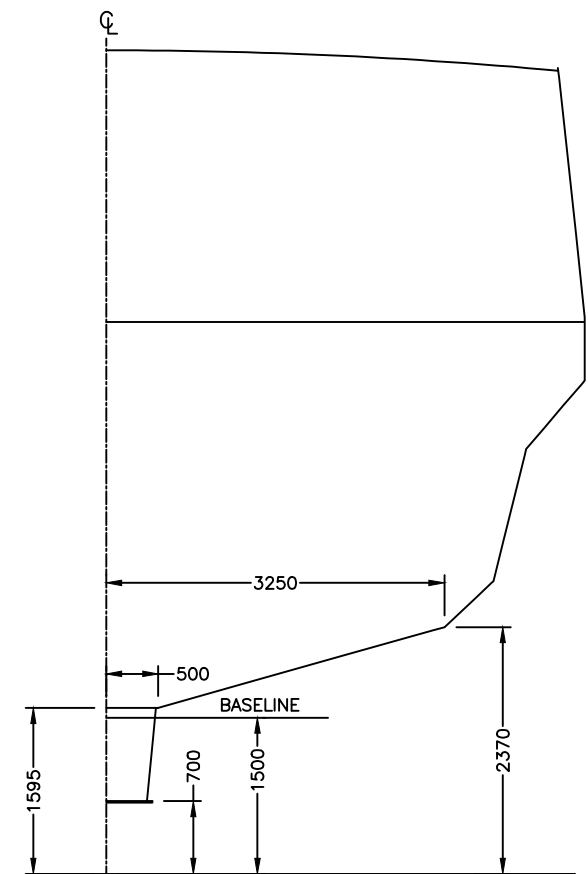
FRAME 0



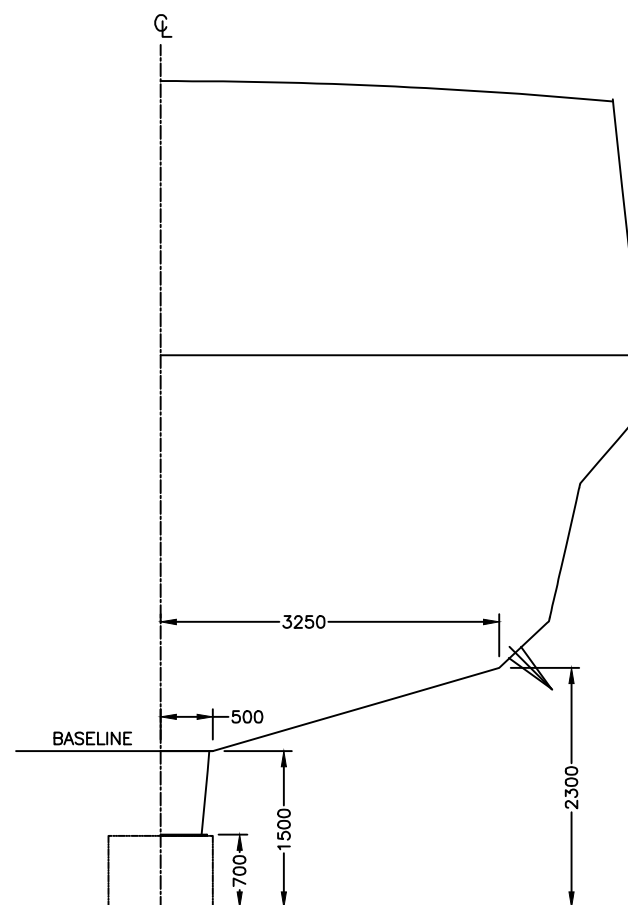
FRAME 4



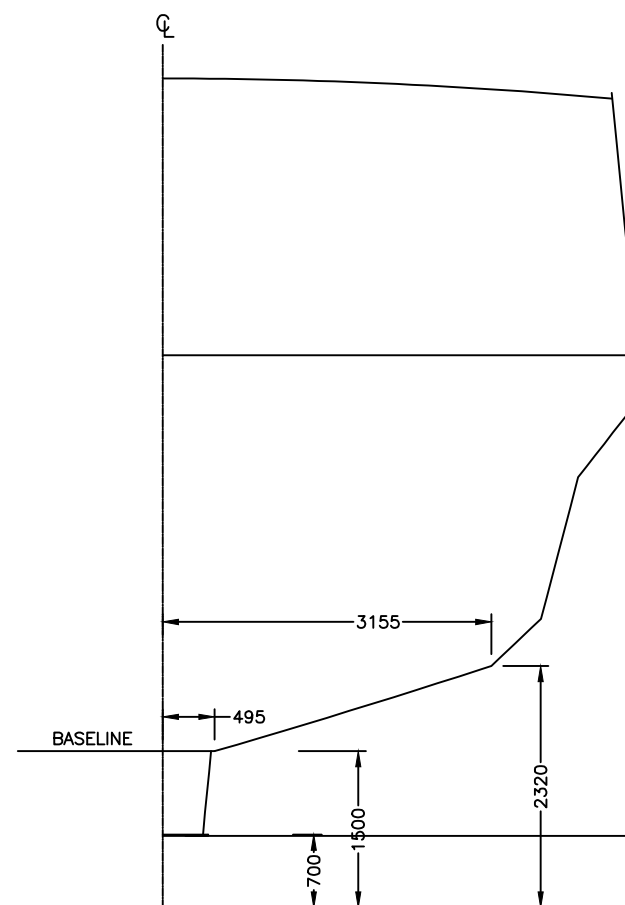
FRAME 8



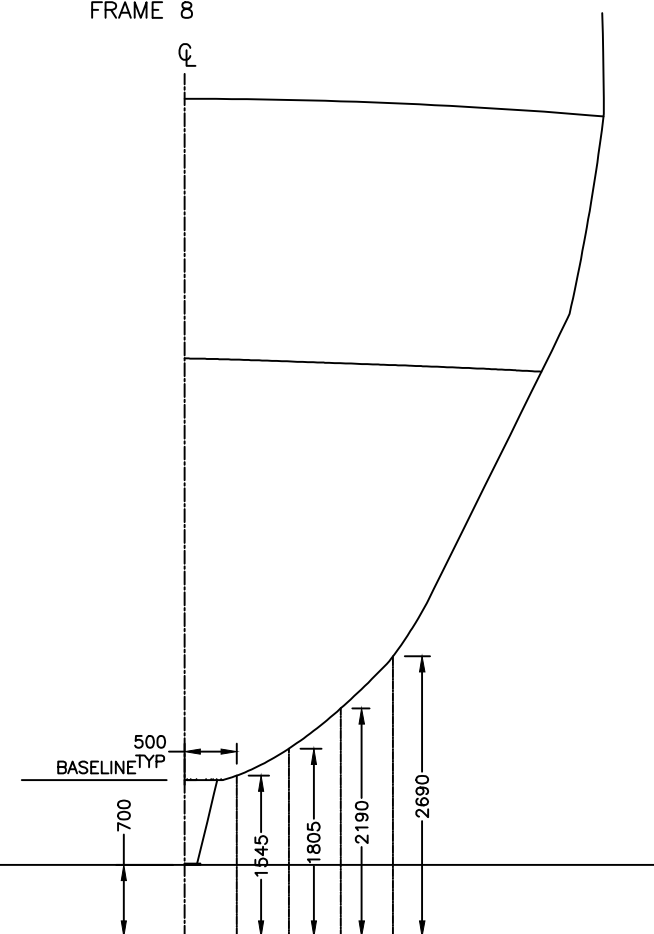
FRAME 14



FRAME "A" TO 18

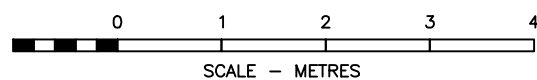


FRAME 21




FRAME 28

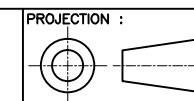
* ALL DIMENSIONS ARE MOLDED
BUILDER TO VERIFY ALL DIMENSIONS WITH THE
FINAL LOFTED HULL FORM.



SCALE - METRES

		Garde côtière canadienne Canadian Coast Guard	
NAVIRE 25M VESSEL COQUE # / HULL # 008		PROJECT TITLE : Navire semi-hauturier de recherche halieutique Near Shore Fisheries Research Vessels	
PROJECT # : MR09-1113		DRAWING FILE : ISV25-14110RMM3.DWG	
DRAWN BY :		REV : 3	
14110		SHEET : 4 OF 4	

© THIS DRAWING IS BASED ON ROBERT ALLAN Ltd. DESIGN NO. 209-028 AND HAS BEEN DEVELOPED BY MERIDIEN MARITIME FOR PRODUCTION PURPOSES ONLY, WITH THE WRITTEN CONSENT OF ROBERT ALLAN LTD. ROBERT ALLAN LTD ASSUME NO RESPONSIBILITY WHATSOEVER FOR THIS ALTERED DRAWING. THE INTELLECTUAL PROPERTY RIGHTS TO THE DESIGN DESCRIBED HEREIN BELONG EXCLUSIVELY TO ROBERT ALLAN LTD. AND CANADA. THE DRAWINGS AND SPECIFICATIONS CONTAINED HEREIN SHALL NOT BE REPRODUCED IN WHOLE OR IN PART, NOR SHALL THEY BE GIVEN TO ANY THIRD PARTIES WITHOUT WRITTEN PERMISSION FROM THE OWNERS (POUR LA TRADUCTION FRANCAISE, VOIR LA PREMIERE PAGE)



PROJECTION :

COMPANY :
MÉRIDIEN MARITIME
RÉPARATION

TITLE :
DOCKING PLAN - 25M