

NOTES:

1. REFER TO DRAWINGS 40500 "ANCHOR & MOORING ARRANGEMENT", 23430 "WINCH SEATINGS", 21010 "STRUCTURAL ARRANGEMENT".
2. FINAL STRUCTURE, GEOMETRY, AND FITTINGS OF A-FRAME AND CTD DAVIT TO BE DETERMINED BY SHIPYARD.

NOTES:

1. SE REPORTER ÉGALEMENT AUX PLANS SUIVANTS:

– DWG 40500 "ANCHOR & MOORING ARRANGEMENT",

– DWG 23430 "WINCH SEATINGS", ET

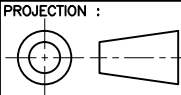
– DWG 21010 "STRUCTURAL ARRANGEMENT".
2. LA STRUCTURE, LA GÉOMÉTRIE, ET L'ACCASTILLAGE DÉFINITIFS DU PORTIQUE EN 'A' ET DU BOSSOIR CTD SONT À DÉTERMINER AU CHANTIER NAVAL.

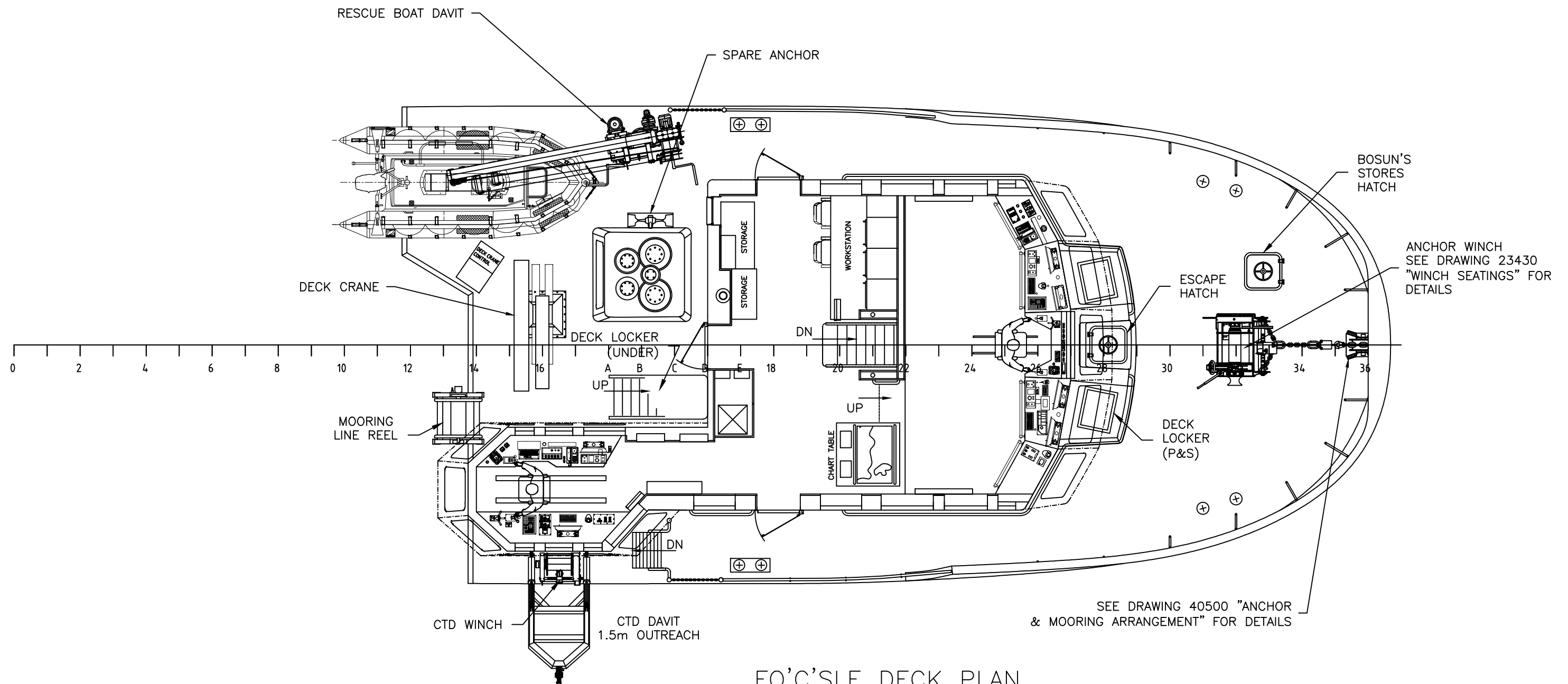
DECK EQUIPMENT/ ÉQUIPEMENT DE PONT				
QTY/ QTÉ	TYPE	CAPACITY/ CAPACITÉ	MODEL/ MODÈLE	MANUFACTURER/ FABRICANT
1	NET DRUM/ TAMBOUR À FILET	1 TRAWL NET/ 1 FILET DE CHALUT	NGDA-8460	HAWBOLDT
2	TRAWL WINCH/ TREUIL DE CHALUT	1100m, 19mm DIA, WIRE ROPE/ CÂBLE MÉTALLIQUE	HGDB-2248	HAWBOLDT
1	CTD WINCH/ TREUIL CTD	900m, 5mmDIA, S.S. WIRE ROPE/ CÂBLE MÉTALLIQUE EN ACIER INOXIDABLE	DB24-1716S	HAWBOLDT
1	ANCHOR WINCH/ TREUIL D'ANCRAGE	137.5 m ANCHOR CABLE/ CÂBLE D'ANCRAGE	HSF-2226	HAWBOLDT
1	DECK CRANE/ GRUE DE BORD	1740 kg AT/À 10 m	823 MF-4S	AMCO VEBA
1	CTD DAVIT/ BOSSOIR CTD	1 TONNE	–	SHIPYARD
1	MOORING LINE REEL/ TAMBOUR DE LIGNE D'AMARRE	100m, 35mmDIA MOORING LINE/ LIGNE D'AMARRE	R-2434	HAWBOLDT
1	RESCUE BOAT DAVIT/ BOSSOIR DU CANOT DE SAUVETAGE	12 kN AT/À 3.5 m SWL/ LIGNE DE FLOTTAISON	RHS.13/3,5	GLOBAL DAVIT
1	A-FRAME/ PORTIQUE EN 'A'	3 TONNES	–	SHIPYARD
1	A-FRAME WINCH TREUIL DU PORTIQUE EN 'A'	3.5 TONNES	TH-5	ROTZLER

7	AS CONSTRUCTED	MM	JAN 2012
6	CTD MODIFY	MM	SEP 2011
5	DECK CRANE FLOOR HAS BEEN MODIFIED	MM	JUN 2011
4	TRAWL WINCH FLOOR HAS BEEN MODIFIED	MM	APR 2011
3	POSITION OF MOORING LINE REEL	MM	SEPT 2010
REV.	REVISIONS	BY	DATE
<div><div></div><div></div></div>		Garde côtière canadienne Canadian Coast Guard	
NAVIRE 25M VESSEL COQUE # / HULL # 008		PROJECT TITLE : Navire semi-hauturier de recherche halieutique Near Shore Fisheries Research Vessels	
PROJECT # : MR09-1113	DRAWING FILE : ISV22-40100RMM7.DWG	DATE : 31/01/2012	
DRAWN BY :	DRAWING # : 40100	REV : 7	SHEET : 1 OF 9

CE PLAN EST BASÉ SUR LE PLAN NO. 209-028. IL A ÉTÉ DÉVELOPPÉ UNIQUEMENT PAR MERIDIEN MARITIME À DES FINS DE PRODUCTION AVEC LA PERMISSION ÉCRITE DE ROBERT ALLAN LTÉE. ROBERT ALLAN LTÉE N'ASSUME AUCUNE RESPONSABILITÉ QUELLE QU'ELLE SOIT POUR CE PLAN MODIFIÉ. LA PROPRIÉTÉ INTELLECTUELLE DU PLAN CI-DÉCRIT APPARTIENT UNIQUEMENT À ROBERT ALLAN LTÉE ET AU CANADA. IL EST DÉFENDU DE REPRODUIRE LES PLANS ET LES DEVIS, CI-INCLUS, EN ENTIER OU EN PARTIE, OU DE LES PARTAGER AVEC UN TIERS SANS LA PERMISSION ÉCRITE DES PROPRIÉTAIRES.

© THIS DRAWING IS BASED ON ROBERT ALLAN Ltd. DESIGN NO. 209-028 AND HAS BEEN DEVELOPED BY MERIDIEN MARITIME FOR PRODUCTION PURPOSES ONLY, WITH THE WRITTEN CONSENT OF ROBERT ALLAN LTD. ROBERT ALLAN LTD ASSUME NO RESPONSIBILITY WHATSOEVER FOR THIS ALTERED DRAWING. THE INTELLECTUAL PROPERTY RIGHTS TO THE DESIGN DESCRIBED HEREIN BELONG EXCLUSIVELY TO ROBERT ALLAN LTD. AND CANADA. THE DRAWINGS AND SPECIFICATIONS CONTAINED HEREIN SHALL NOT BE REPRODUCED IN WHOLE OR IN PART, NOR SHALL THEY BE GIVEN TO ANY THIRD PARTIES WITHOUT WRITTEN PERMISSION FROM THE OWNERS (POUR LA TRADUCTION FRANCAISE, VOIR LA PREMIERE PAGE)





FO'C'SLE DECK PLAN

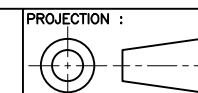
0 1 2 3 4
SCALE - METRES



COMPANY :
MÉRIDIEN MARITIME
RÉPARATION

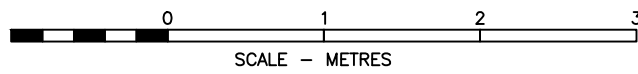
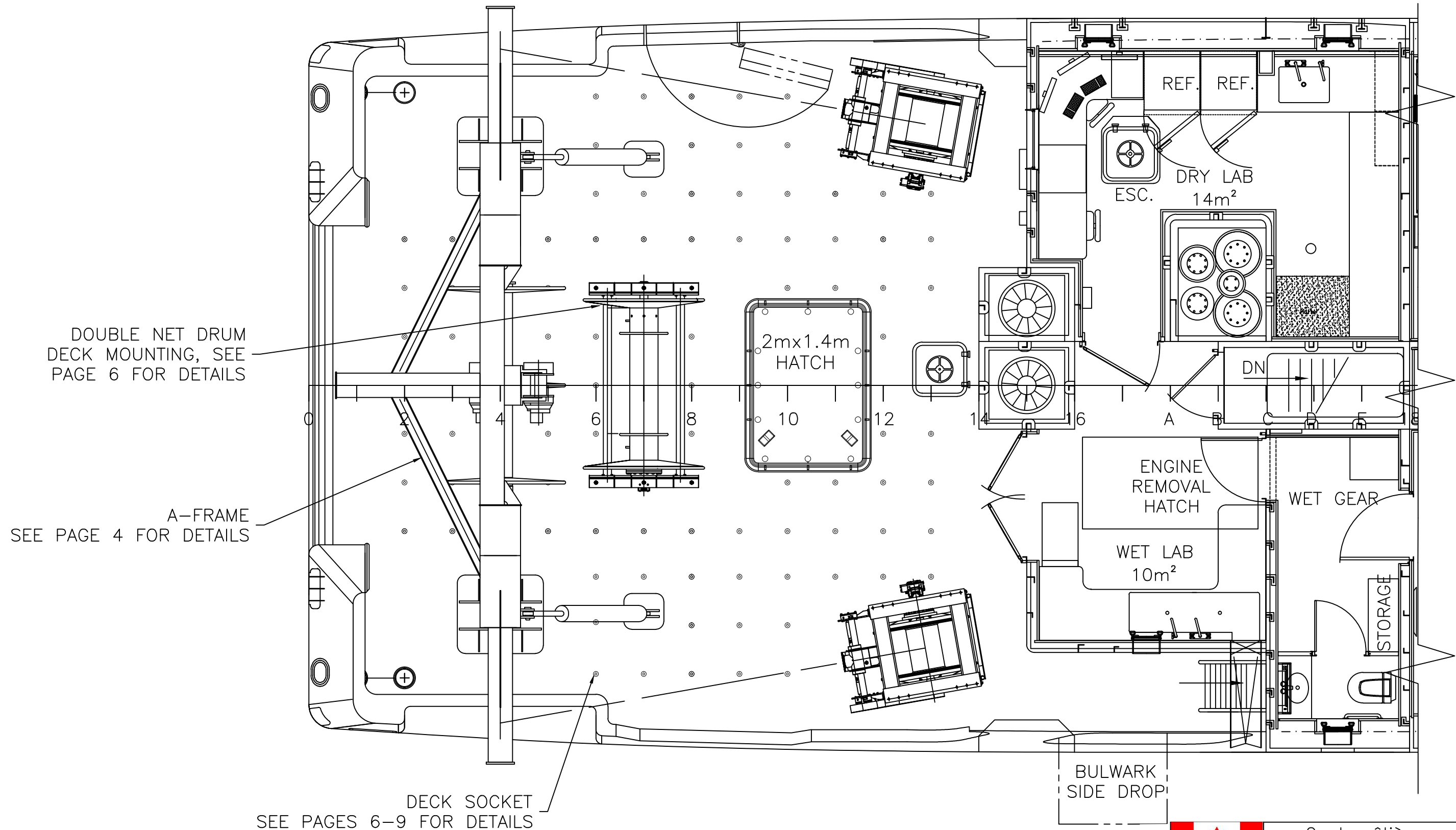
TITLE :
DECK MACHINERY & FITTINGS
ARRANGEMENT - 25M

© THIS DRAWING IS BASED ON ROBERT ALLAN LTD. DESIGN NO. 209-028 AND HAS BEEN DEVELOPED BY MERIDIEN MARITIME FOR PRODUCTION PURPOSES ONLY, WITH THE WRITTEN CONSENT OF ROBERT ALLAN LTD. ROBERT ALLAN LTD ASSUME NO RESPONSIBILITY WHATSOEVER FOR THIS ALTERED DRAWING. THE INTELLECTUAL PROPERTY RIGHTS TO THE DESIGN DESCRIBED HEREIN BELONG EXCLUSIVELY TO ROBERT ALLAN LTD. AND CANADA. THE DRAWINGS AND SPECIFICATIONS CONTAINED HEREIN SHALL NOT BE REPRODUCED IN WHOLE OR IN PART, NOR SHALL THEY BE GIVEN TO ANY THIRD PARTIES WITHOUT WRITTEN PERMISSION FROM THE OWNERS (POUR LA TRADUCTION FRANÇAISE, VOIR LA PREMIÈRE PAGE)



PROJECTION :

		Garde côtière canadienne Canadian Coast Guard	
NAVIRE 25M VESSEL COQUE # / HULL # 008		PROJECT TITLE : Navire semi-hauturier de recherche halieutique Near Shore Fisheries Research Vessels	
PROJECT # : MR09-1113	DRAWING FILE : ISV22-40100RMM7.DWG	DATE : 31/01/2012	SHEET : 2 OF 9
DRAWN BY :	DRAWING # : 40100	REV : 7	



Garde côtière canadienne
Canadian Coast Guard

NAVIRE 25M VESSEL
COQUE # / HULL #
008

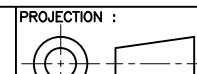
PROJECT TITLE :
Navire semi-hauturier de recherche halieutique
Near Shore Fisheries Research Vessels

PROJECT # :
MR09-1113

DRAWING FILE :
ISV22-40100RMM7.DWG

DRAWN BY :

DRAWING # :
40100



PROJECTION :

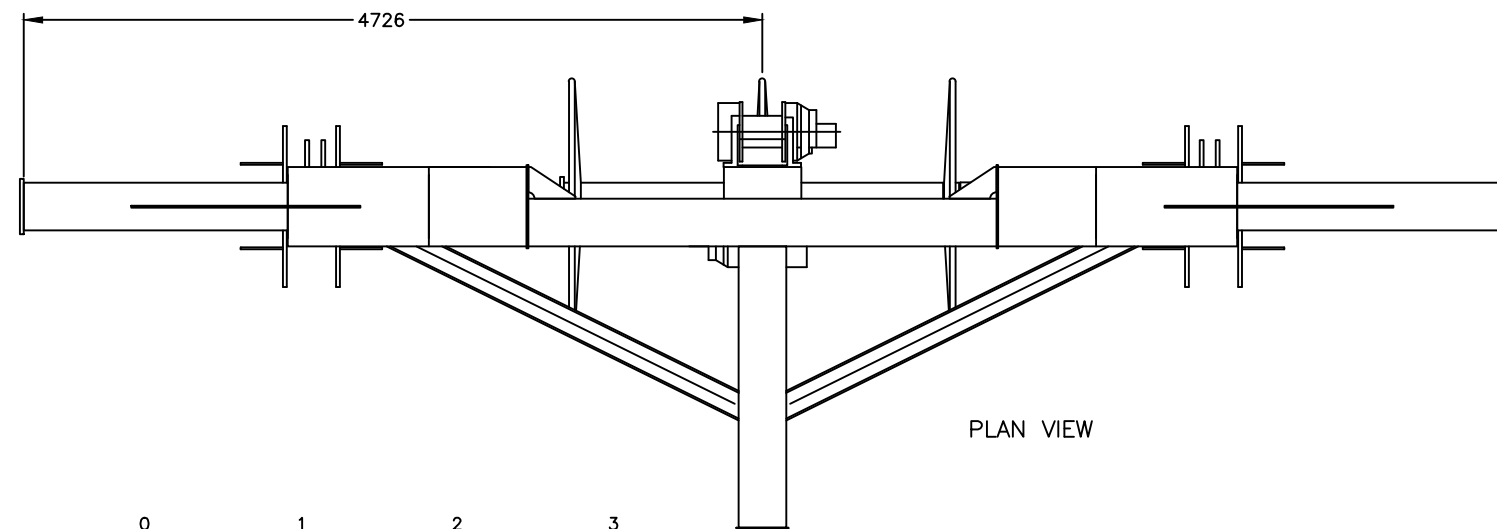
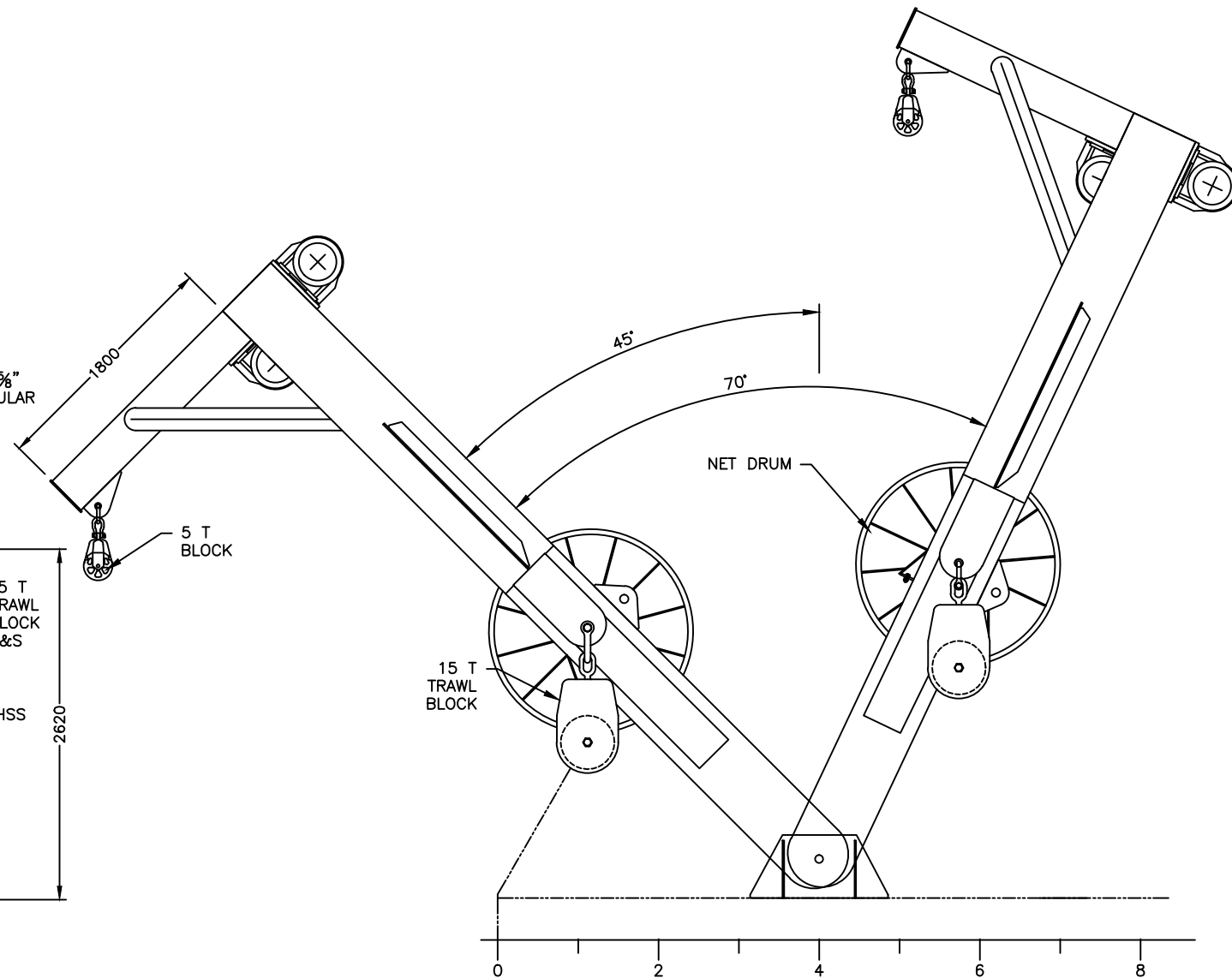
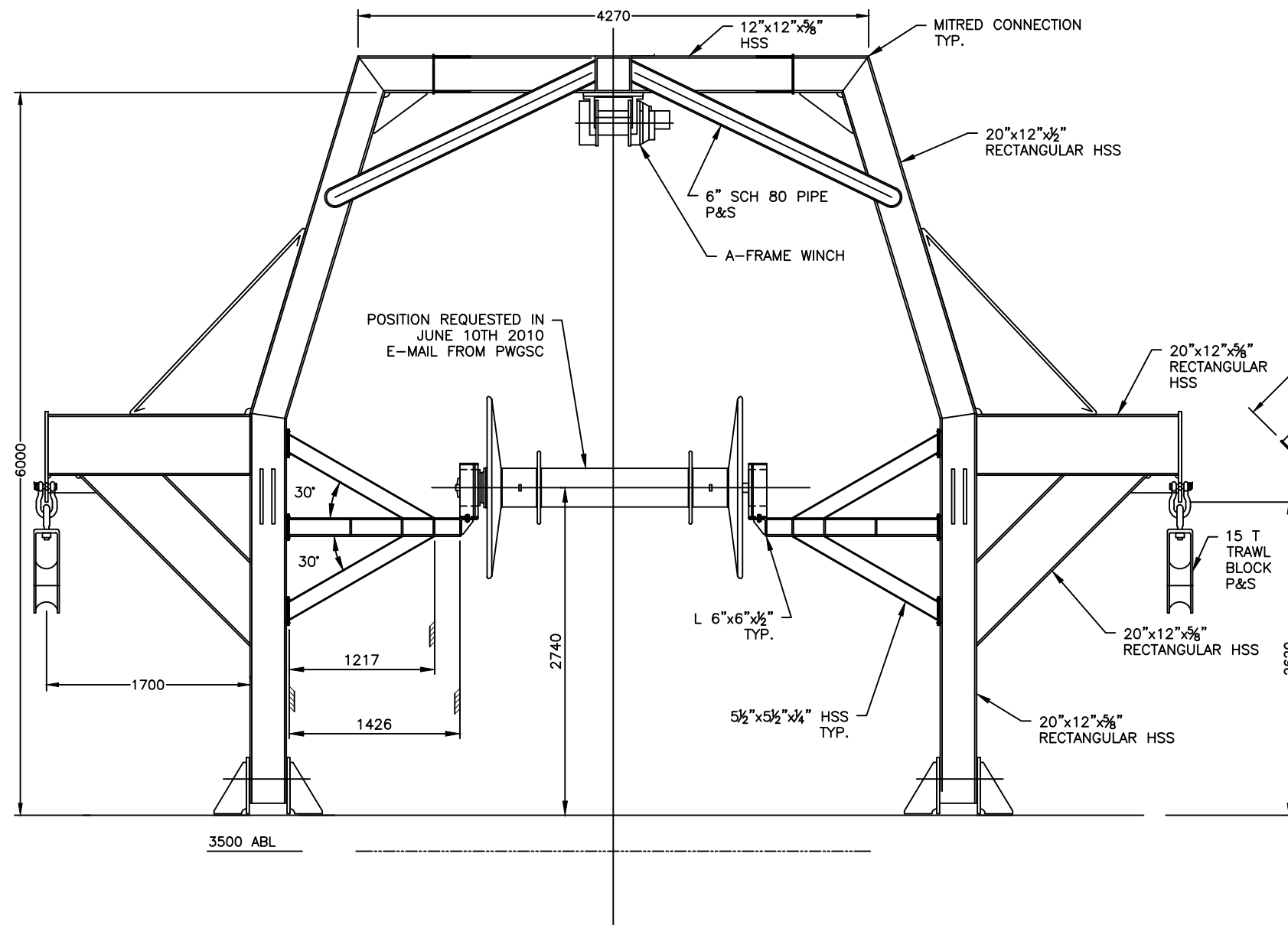
DATE :
31/01/2012

SHEET :
3 OF 9

© THIS DRAWING IS BASED ON ROBERT ALLAN Ltd. DESIGN NO. 209-028 AND HAS BEEN DEVELOPED BY MERIDIEN MARITIME FOR PRODUCTION PURPOSES ONLY, WITH THE WRITTEN CONSENT OF ROBERT ALLAN LTD. ROBERT ALLAN LTD ASSUME NO RESPONSIBILITY WHATSOEVER FOR THIS ALTERED DRAWING. THE INTELLECTUAL PROPERTY RIGHTS TO THE DESIGN DESCRIBED HEREIN BELONG EXCLUSIVELY TO ROBERT ALLAN LTD. AND CANADA. THE DRAWINGS AND SPECIFICATIONS CONTAINED HEREIN SHALL NOT BE REPRODUCED IN WHOLE OR IN PART, NOR SHALL THEY BE GIVEN TO ANY THIRD PARTIES WITHOUT WRITTEN PERMISSION FROM THE OWNERS (POUR LA TRADUCTION FRANCAISE, VOIR LA PREMIERE PAGE)

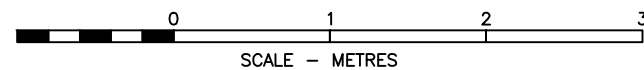
COMPANY :
MÉRIDIEN MARITIME
RÉPARATION


TITLE :
DECK MACHINERY & FITTINGS
ARRANGEMENT - 25M



PLAN VIEW

A FRAME



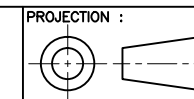
		Garde côtière canadienne Canadian Coast Guard	
NAVIRE 25M VESSEL COQUE # / HULL # 008		PROJECT TITLE : Navire semi-hauturier de recherche halieutique Near Shore Fisheries Research Vessels	
PROJECT # :	MRO9-1113	DRAWING FILE :	ISV22-40100RMM7.DWG
DRAWN BY :		DRAWING # :	40100
DATE :	31/01/2012	REV :	7
SHEET :	4 OF 9		



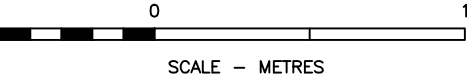
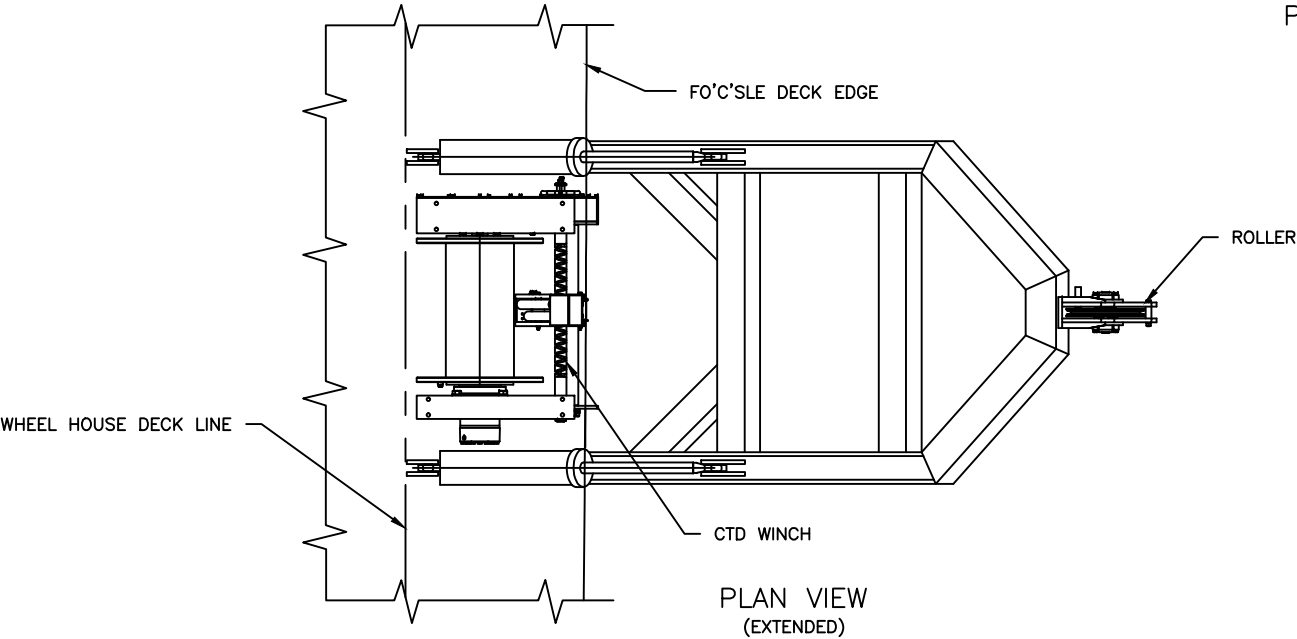
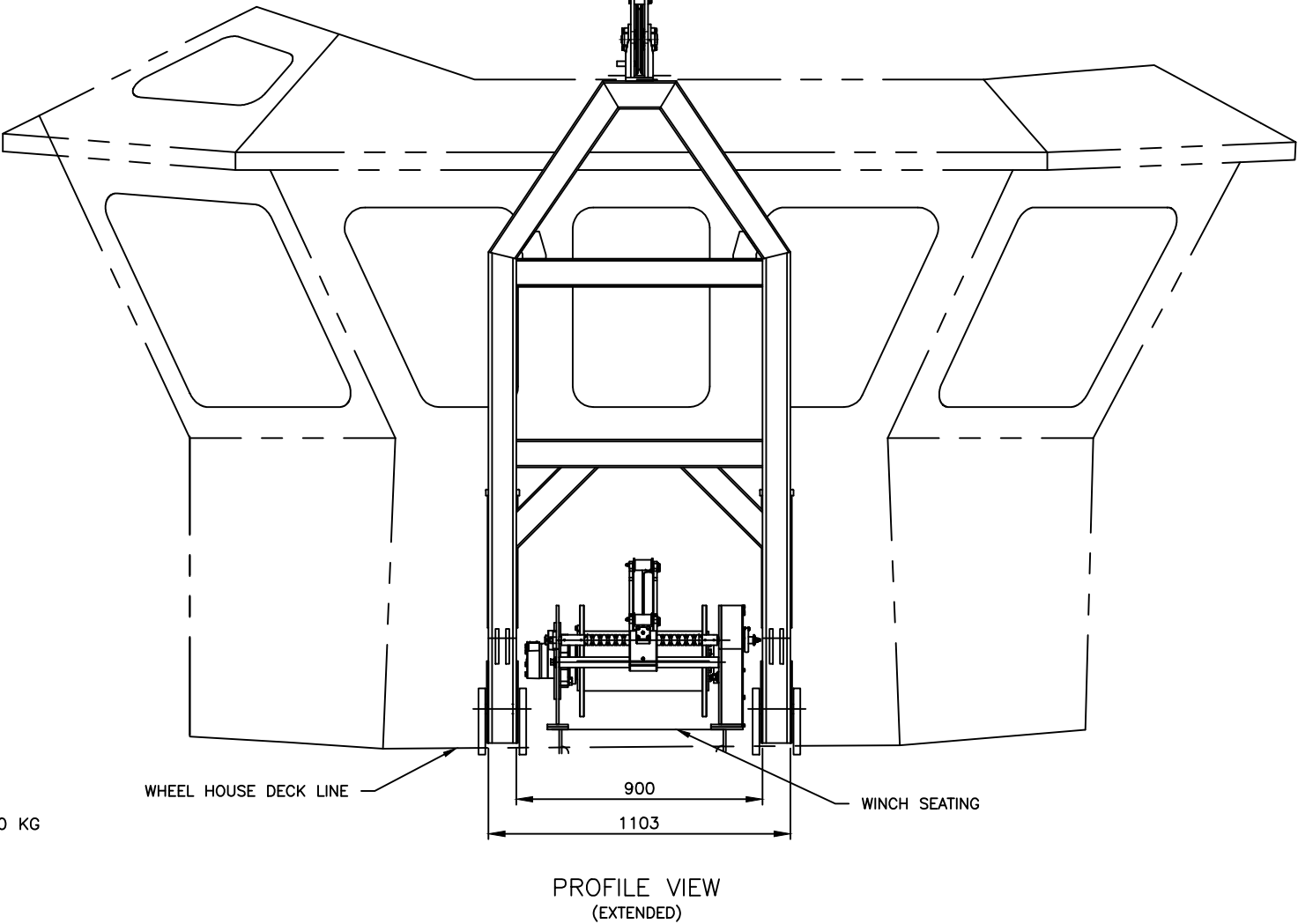
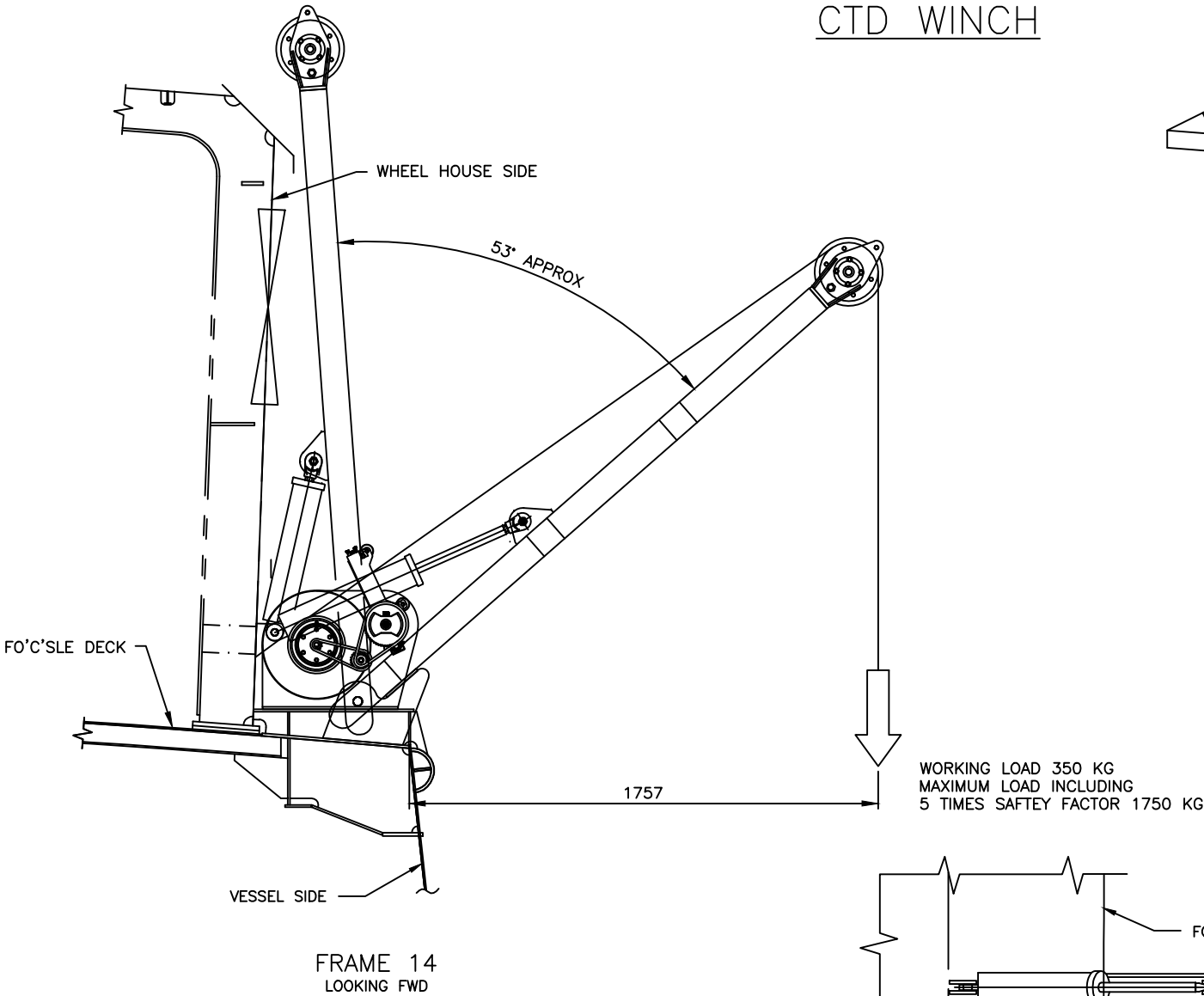
COMPANY :
MÉRIDIEN MARITIME
RÉPARATION

TITLE :
DECK MACHINERY & FITTINGS
ARRANGEMENT - 25M

© THIS DRAWING IS BASED ON ROBERT ALLAN LTD. DESIGN NO. 209-028 AND HAS BEEN DEVELOPED BY MERIDIEN MARITIME FOR PRODUCTION PURPOSES ONLY, WITH THE WRITTEN CONSENT OF ROBERT ALLAN LTD. ROBERT ALLAN LTD ASSUME NO RESPONSIBILITY WHATSOEVER FOR THIS ALTERED DRAWING. THE INTELLECTUAL PROPERTY RIGHTS TO THE DESIGN DESCRIBED HEREIN BELONG EXCLUSIVELY TO ROBERT ALLAN LTD. AND CANADA. THE DRAWINGS AND SPECIFICATIONS CONTAINED HEREIN SHALL NOT BE REPRODUCED IN WHOLE OR IN PART, NOR SHALL THEY BE GIVEN TO ANY THIRD PARTIES WITHOUT WRITTEN PERMISSION FROM THE OWNERS (POUR LA TRADUCTION FRANCAISE, VOIR LA PREMIERE PAGE)



CTD WINCH



COMPANY :

MÉRIDIEN MARITIME

RÉPARATION

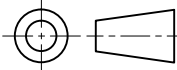
TITLE :

DECK MACHINERY & FITTINGS

ARRANGEMENT - 25M

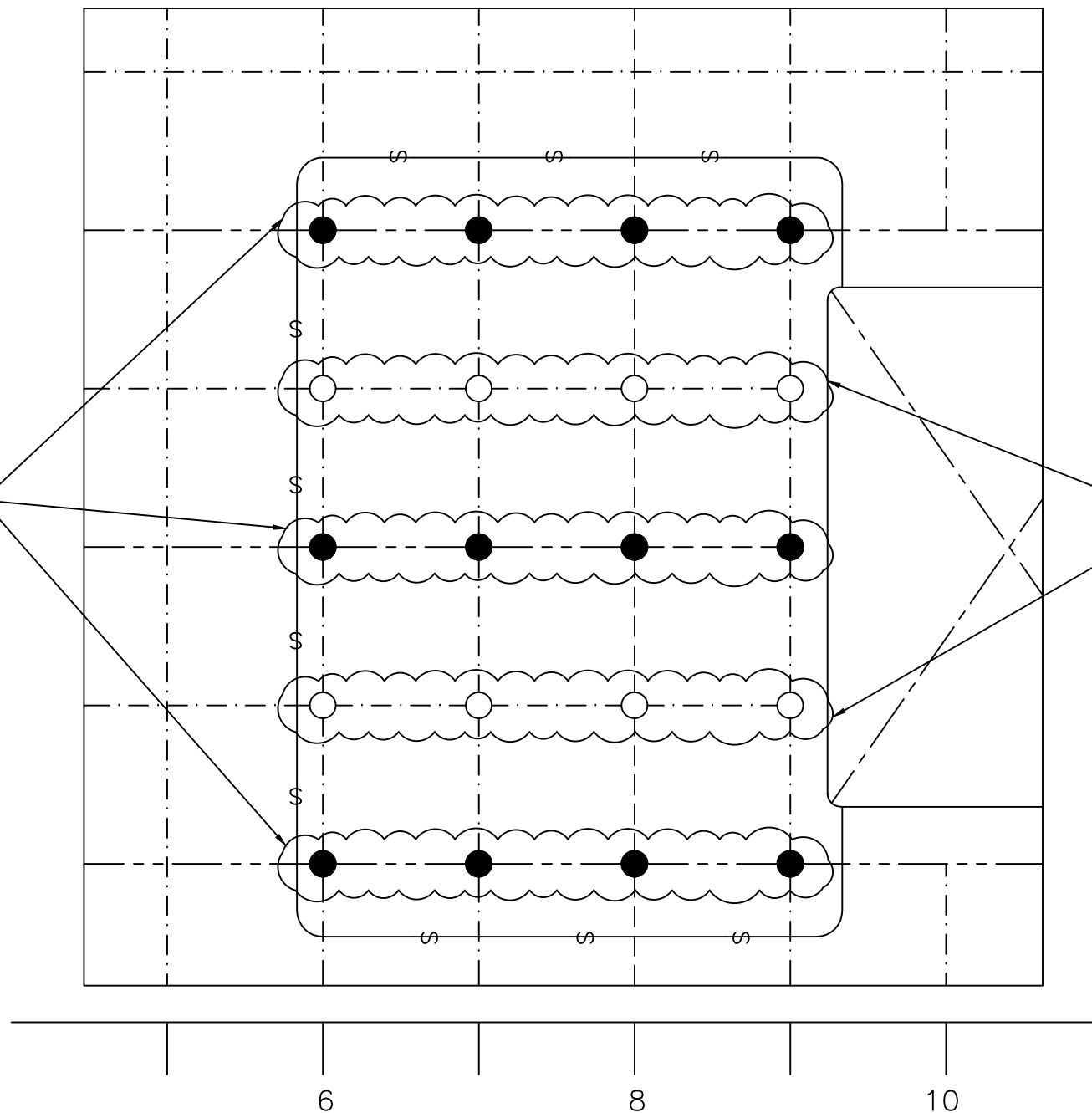
© THIS DRAWING IS BASED ON ROBERT ALLAN Ltd. DESIGN NO. 209-028 AND HAS BEEN DEVELOPED BY MERIDIEN MARITIME FOR PRODUCTION PURPOSES ONLY, WITH THE WRITTEN CONSENT OF ROBERT ALLAN LTD. ROBERT ALLAN LTD ASSUME NO RESPONSIBILITY WHATSOEVER FOR THIS ALTERED DRAWING. THE INTELLECTUAL PROPERTY RIGHTS TO THE DESIGN DESCRIBED HEREIN BELONG EXCLUSIVELY TO ROBERT ALLAN LTD. AND CANADA. THE DRAWINGS AND SPECIFICATIONS CONTAINED HEREIN SHALL NOT BE REPRODUCED IN WHOLE OR IN PART, NOR SHALL THEY BE GIVEN TO ANY THIRD PARTIES WITHOUT WRITTEN PERMISSION FROM THE OWNERS (POUR LA TRADUCTION FRANCAISE, VOIR LA PREMIERE PAGE)

PROJECTION :



<div> <div> <div></div> <div></div> </div> </div>		<div> <div>Garde côtière canadienne</div> <div>Canadian Coast Guard</div> </div>	
<div> <div>NAVIRE 25M VESSEL</div> <div>COQUE # / HULL #</div> <div>008</div> </div>		<div> <div>PROJECT TITLE :</div> <div>Navire semi-hauturier de recherche halieutique</div> <div>Near Shore Fisheries Research Vessels</div> </div>	
<div>PROJECT # :</div> <div>MR09-1113</div>	<div>DRAWING FILE :</div> <div>ISV22-40100RMM7.DWG</div>	<div>DATE :</div> <div>31/01/2012</div>	
<div>DRAWN BY :</div>	<div>DRAWING # :</div> <div>40100</div>	<div>REV :</div> <div>7</div>	<div>SHEET :</div> <div>5 OF 9</div>

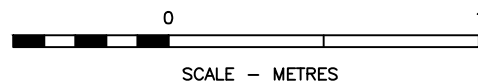
REQUIRED CONNECTION POINTS FOR
HIGH LOAD EQUIPMENT,
SEE NOTE 1 AND 2



DECK SOCKET NOTES:

1. TOTAL TENSILE OR COMPRESSIVE REACTION FORCES ON FOUNDATION NOT TO EXCEED 15,500 kg.
2. MAXIMUM TENSILE LOAD ON ANY SINGLE REQUIRED CONNECTION POINT ON FOUNDATION NOT TO EXCEED 5,500 kg.
3. MAXIMUM FOUNDATION TENSILE LOAD ON UNREINFORCED CONNECTION POINTS NOT TO EXCEED 750 kg.
4. USE ONLY SAE GRADE 1 BOLTS OR EQUIVALENT.
5. BOLTS USED IN REQUIRED CONNECTION POINTS TO BE DISCARDED AFTER EACH USE.
6. ADJUST DECK SOCKETS TO SUIT THICKNESS OF ASSOCIATED DECK PLATING.
7. SUPPLY THREADED NYLON, OR EQUAL, PLUGS FOR ALL DECK SOCKETS WHEN NOT IN USE.

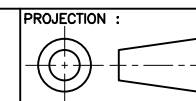
UNREINFORCED CONNECTION POINTS



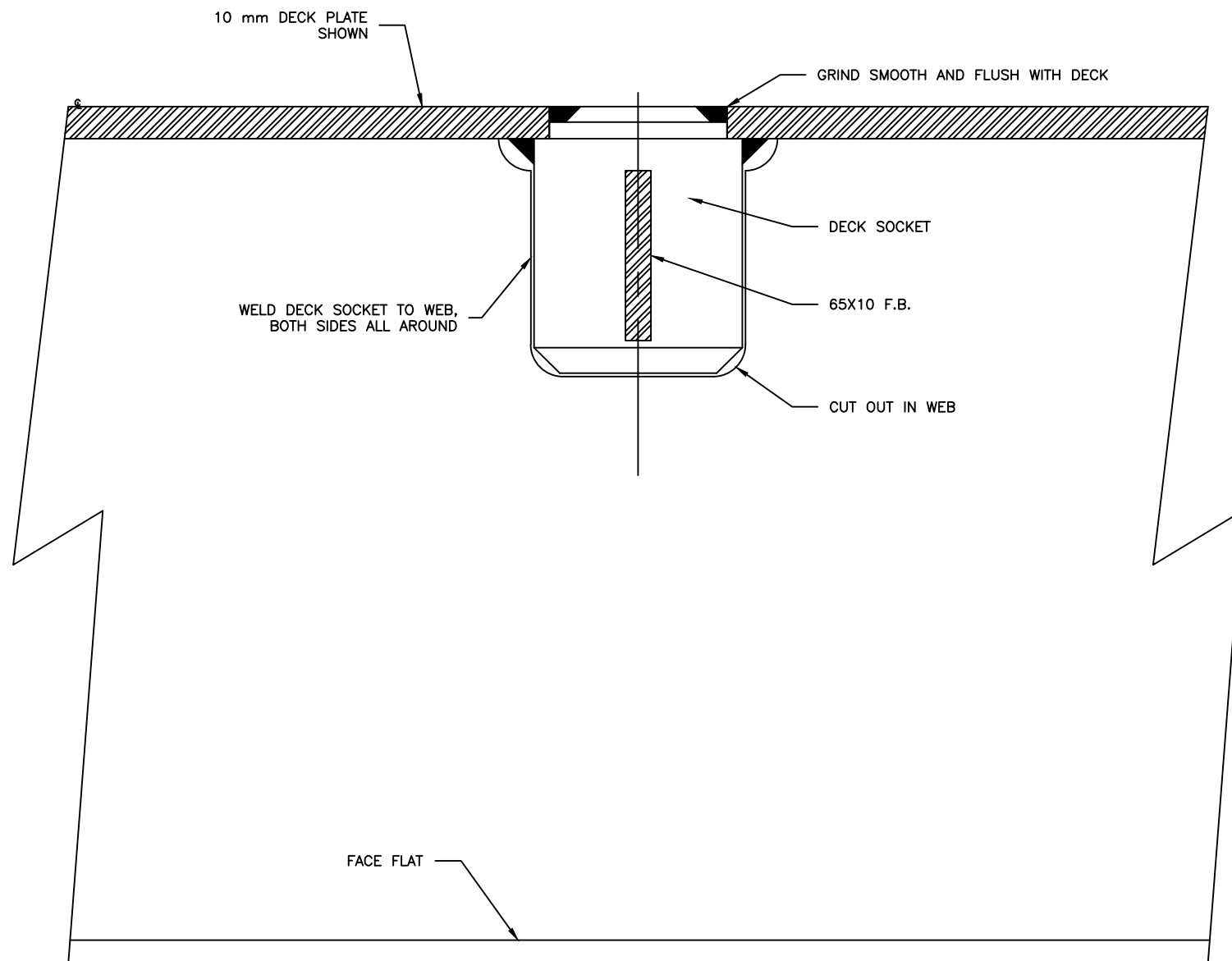
COMPANY :
MÉRIDIEN MARITIME
RÉPARATION

TITLE :
DECK MACHINERY & FITTINGS
ARRANGEMENT - 25M

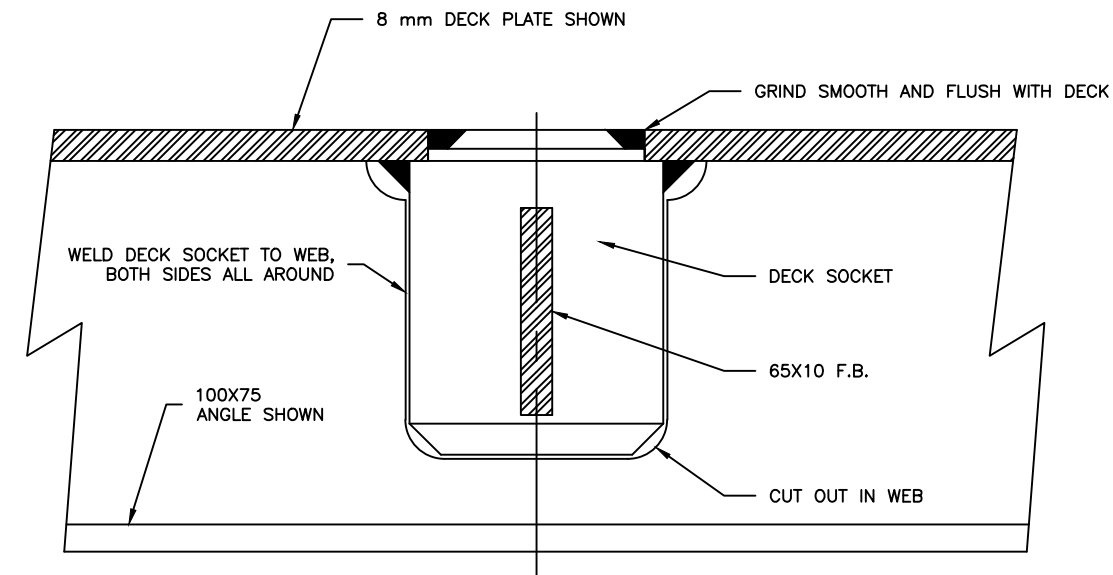
© THIS DRAWING IS BASED ON ROBERT ALLAN Ltd. DESIGN NO. 209-028 AND HAS BEEN DEVELOPED BY MERIDIEN MARITIME FOR PRODUCTION PURPOSES ONLY, WITH THE WRITTEN CONSENT OF ROBERT ALLAN LTD. ROBERT ALLAN LTD ASSUME NO RESPONSIBILITY WHATSOEVER FOR THIS ALTERED DRAWING. THE INTELLECTUAL PROPERTY RIGHTS TO THE DESIGN DESCRIBED HEREIN BELONG EXCLUSIVELY TO ROBERT ALLAN LTD. AND CANADA. THE DRAWINGS AND SPECIFICATIONS CONTAINED HEREIN SHALL NOT BE REPRODUCED IN WHOLE OR IN PART, NOR SHALL THEY BE GIVEN TO ANY THIRD PARTIES WITHOUT WRITTEN PERMISSION FROM THE OWNERS (POUR LA TRADUCTION FRANÇAISE, VOIR LA PREMIÈRE PAGE)



		Garde côtière canadienne Canadian Coast Guard	
NAVIRE 25M VESSEL COQUE # / HULL # 008		PROJECT TITLE : Navire semi-hauturier de recherche halieutique Near Shore Fisheries Research Vessels	
PROJECT # : MR09-1113	DRAWING FILE : ISV22-40100RMM7.DWG	DATE : 31/01/2012	
DRAWN BY :	DRAWING # : 40100	REV : 7	SHEET : 6 OF 9

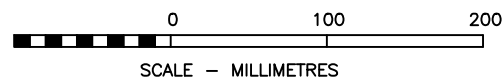


WEB FRAME CONNECTION DETAIL



DECK BEAM CONNECTION DETAIL

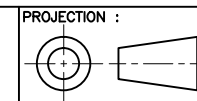
DECK SOCKET STRUCTURE CONNECTION DETAILS




COMPANY :
MÉRIDIEN MARITIME
RÉPARATION

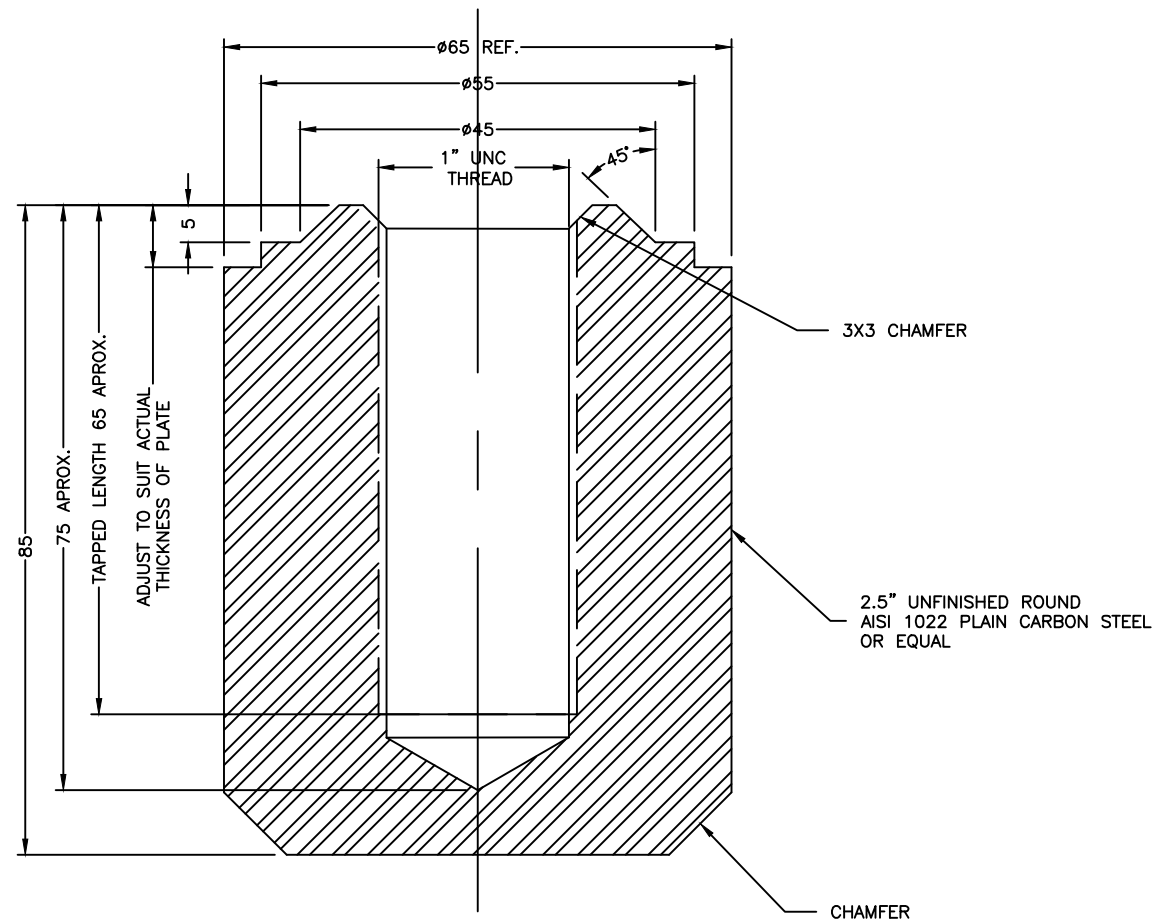
TITLE :
DECK MACHINERY & FITTINGS
ARRANGEMENT - 25M

© THIS DRAWING IS BASED ON ROBERT ALLAN Ltd. DESIGN NO. 209-028 AND HAS BEEN DEVELOPED BY MERIDIEN MARITIME FOR PRODUCTION PURPOSES ONLY, WITH THE WRITTEN CONSENT OF ROBERT ALLAN LTD. ROBERT ALLAN LTD ASSUME NO RESPONSIBILITY WHATSOEVER FOR THIS ALTERED DRAWING. THE INTELLECTUAL PROPERTY RIGHTS TO THE DESIGN DESCRIBED HEREIN BELONG EXCLUSIVELY TO ROBERT ALLAN LTD. AND CANADA. THE DRAWINGS AND SPECIFICATIONS CONTAINED HEREIN SHALL NOT BE REPRODUCED IN WHOLE OR IN PART, NOR SHALL THEY BE GIVEN TO ANY THIRD PARTIES WITHOUT WRITTEN PERMISSION FROM THE OWNERS (POUR LA TRADUCTION FRANCAISE, VOIR LA PREMIERE PAGE)

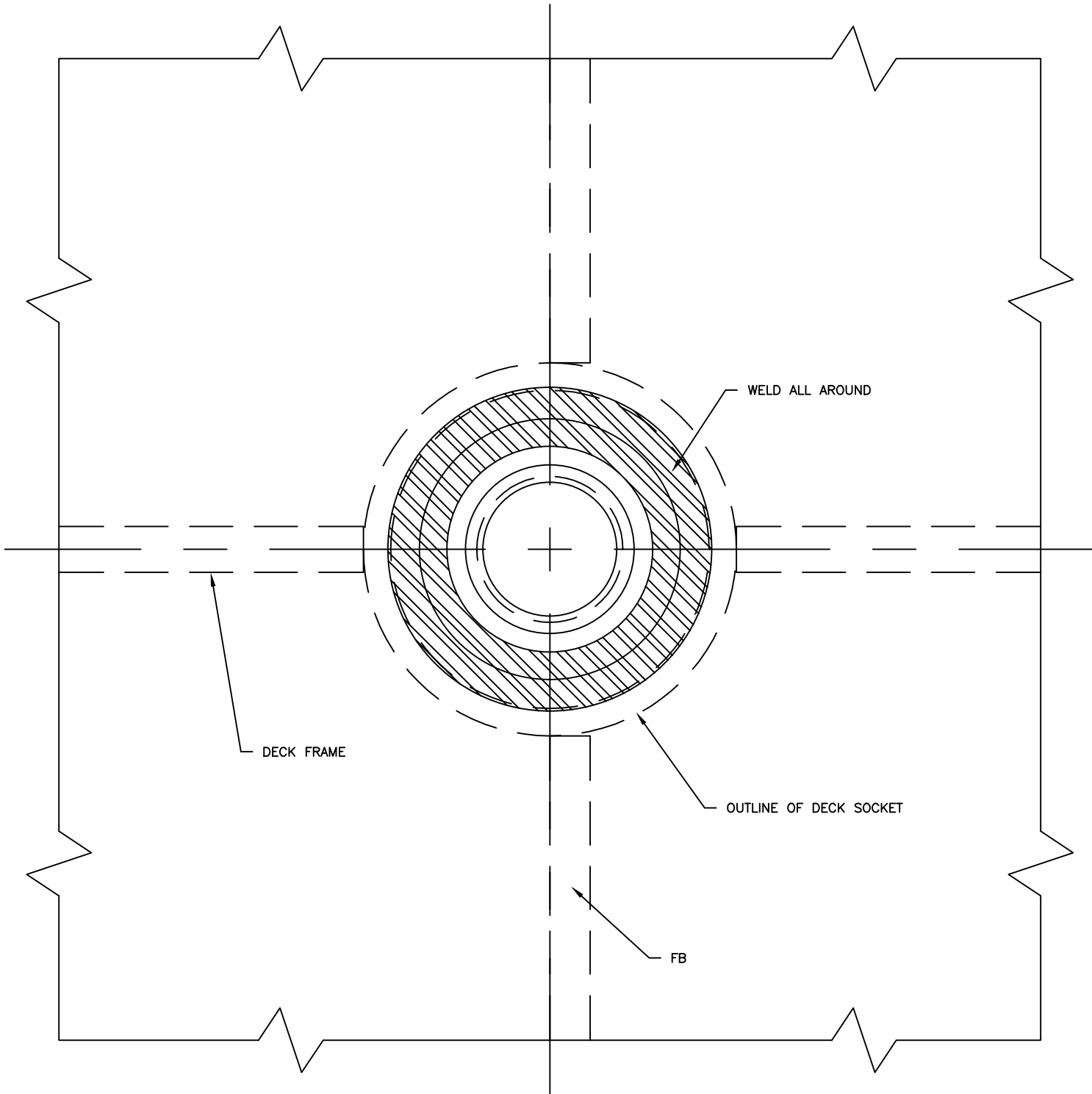


PROJECTION :

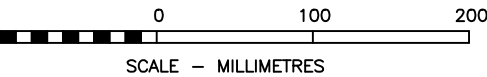
		Garde côtière canadienne Canadian Coast Guard		
NAVIRE 25M VESSEL COQUE # / HULL # 008		PROJECT TITLE : Navire semi-hauturier de recherche halieutique Near Shore Fisheries Research Vessels		
PROJECT # : MRO9-1113	DRAWING FILE : ISV22-40100RMM7.DWG	DATE : 31/01/2012		
DRAWN BY :	DRAWING # : 40100	REV : 7	SHEET : 7 OF 9	



DECK SOCKET



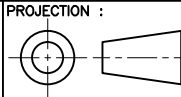
PLAN VIEW OF DECK SOCKET
INSTALLED IN DECK



COMPANY :
MÉRIDIEN MARITIME
RÉPARATION

TITLE :
DECK MACHINERY & FITTINGS
ARRANGEMENT - 25M

© THIS DRAWING IS BASED ON ROBERT ALLAN Ltd. DESIGN NO. 209-028 AND HAS BEEN DEVELOPED BY MERIDIEN MARITIME FOR PRODUCTION PURPOSES ONLY, WITH THE WRITTEN CONSENT OF ROBERT ALLAN LTD. ROBERT ALLAN LTD ASSUME NO RESPONSIBILITY WHATSOEVER FOR THIS ALTERED DRAWING. THE INTELLECTUAL PROPERTY RIGHTS TO THE DESIGN DESCRIBED HEREIN BELONG EXCLUSIVELY TO ROBERT ALLAN LTD. AND CANADA. THE DRAWINGS AND SPECIFICATIONS CONTAINED HEREIN SHALL NOT BE REPRODUCED IN WHOLE OR IN PART, NOR SHALL THEY BE GIVEN TO ANY THIRD PARTIES WITHOUT WRITTEN PERMISSION FROM THE OWNERS (POUR LA TRADUCTION FRANCAISE, VOIR LA PREMIERE PAGE)



Garde côtière canadienne
Canadian Coast Guard

NAVIRE 25M VESSEL
COQUE # / HULL #
008

PROJECT TITLE :
Navire semi-hauturier de recherche halieutique
Near Shore Fisheries Research Vessels

PROJECT # :
MR09-1113

DRAWING FILE :
ISV22-40100RMM7.DWG

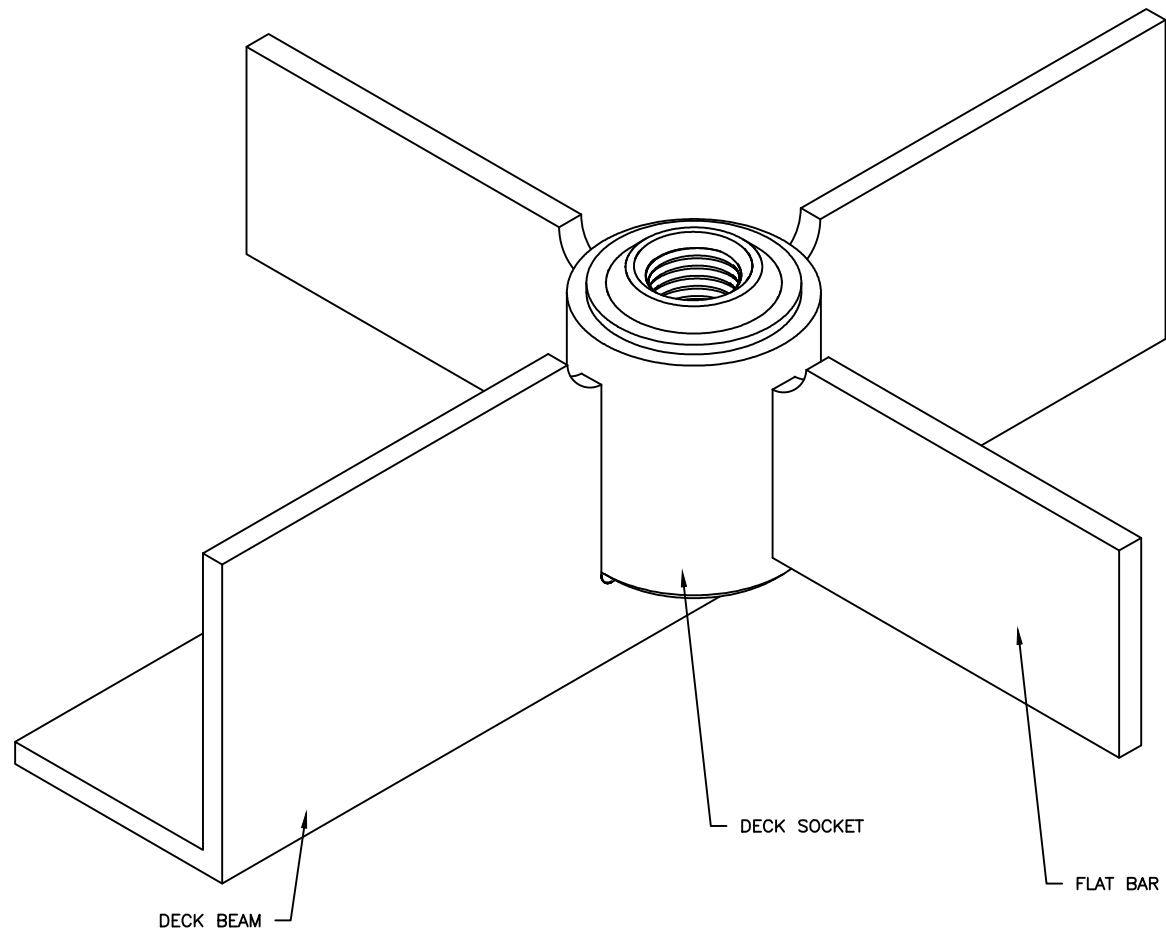
DATE :
31/01/2012

DRAWN BY :

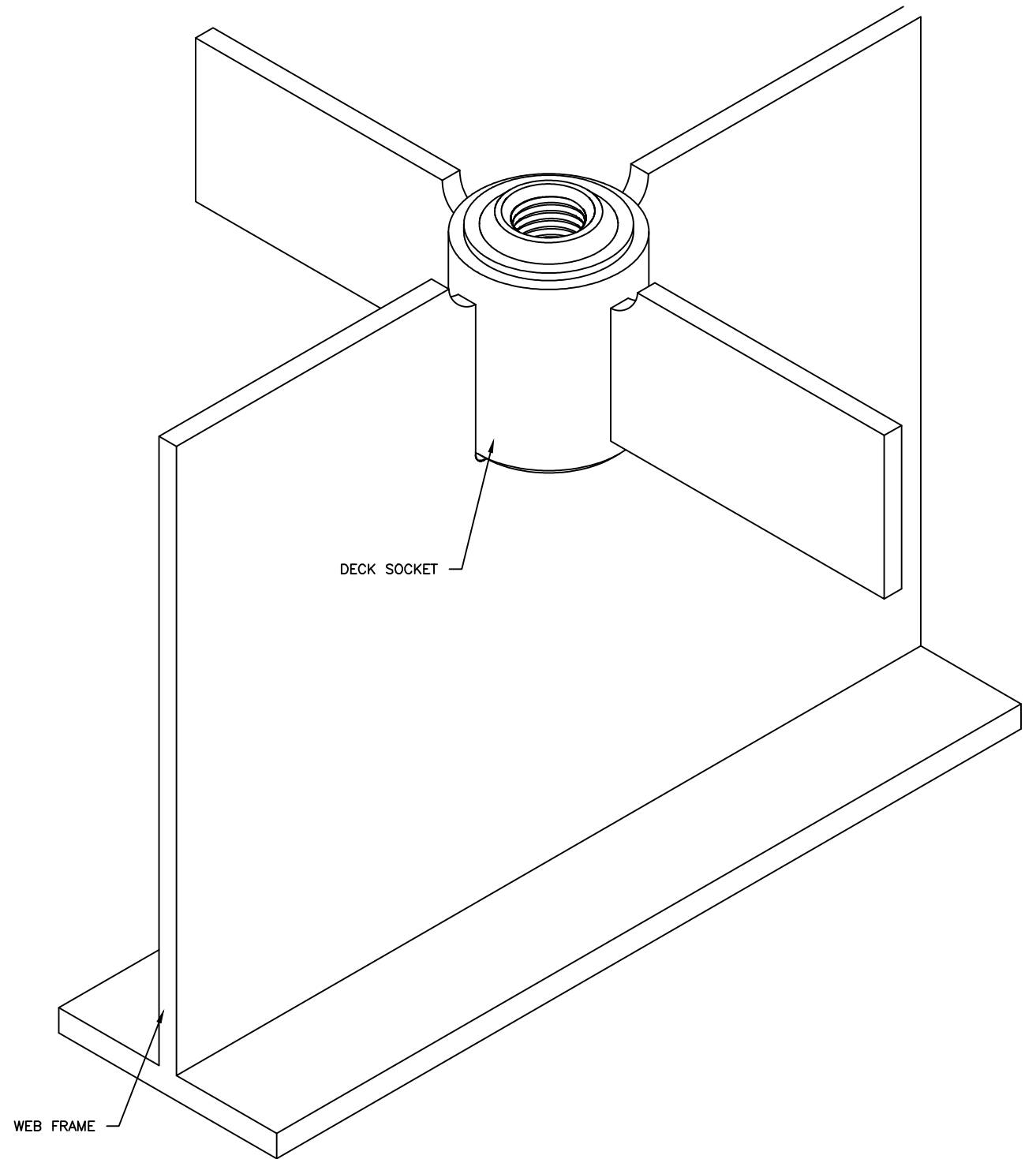
DRAWING # :
40100

REV :
7

SHEET :
8 OF 9



STANDARD DECK SOCKET, DECK NOT SHOWN
MAXIMUM SAFE WORKING LOAD: 750 KG



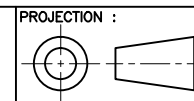
REINFORCED DECK SOCKET, DECK NOT SHOWN
MAXIMUM SAFE WORKING LOAD: 5,500 KG IWO 10 mm DECK INSERT




COMPANY :
MÉRIDIEN MARITIME
RÉPARATION

TITLE :
DECK MACHINERY & FITTINGS
ARRANGEMENT — 25M

© THIS DRAWING IS BASED ON ROBERT ALLAN Ltd. DESIGN NO. 209-028 AND HAS BEEN DEVELOPED BY MERIDIEN MARITIME FOR PRODUCTION PURPOSES ONLY, WITH THE WRITTEN CONSENT OF ROBERT ALLAN LTD. ROBERT ALLAN LTD ASSUME NO RESPONSIBILITY WHATSOEVER FOR THIS ALTERED DRAWING. THE INTELLECTUAL PROPERTY RIGHTS TO THE DESIGN DESCRIBED HEREIN BELONG EXCLUSIVELY TO ROBERT ALLAN LTD. AND CANADA. THE DRAWINGS AND SPECIFICATIONS CONTAINED HEREIN SHALL NOT BE REPRODUCED IN WHOLE OR IN PART, NOR SHALL THEY BE GIVEN TO ANY THIRD PARTIES WITHOUT WRITTEN PERMISSION FROM THE OWNERS (POUR LA TRADUCTION FRANCAISE, VOIR LA PREMIERE PAGE)



PROJECTION :

		Garde côtière canadienne Canadian Coast Guard	
NAVIRE 25M VESSEL COQUE # / HULL # 008		PROJECT TITLE : Navire semi-hauturier de recherche halieutique Near Shore Fisheries Research Vessels	
PROJECT # : MR09-1113	DRAWING FILE : ISV22-40100RMM7.DWG	DATE : 31/01/2012	SHEET : 9 OF 9
DRAWN BY :	DRAWING # : 40100	REV : 