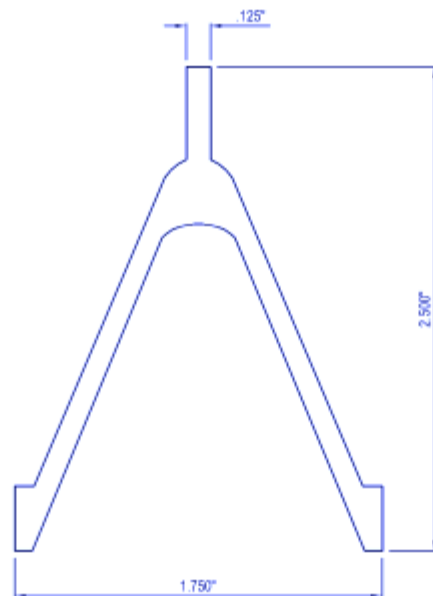


# Shield Material

- The required shield material is a louver fence type product. A normal application of this material is surrounding environmental equipment on roof tops. The material inhibits visibility but allows airflow.
- The recommended material is manufactured by AMETCO Mfg Corp; 4326 Hamann Parkway; P.O. Box 1210; Willoughby, Ohio 44096; phone 440 951-4300; [www.ametco.com](http://www.ametco.com) The material is designated as Venetian Aluminum.
- The basic aluminum extrusion is an invert “V”. The array of extrusions overlap so that visibility is completely inhibited. The estimated radio frequency attenuation is 20 dB from 3 GHz to 20 GHz
- Note: AMETCO apparently does not supply mounting structure. Locating a vendor that supplies both fencing panels and support structure items would be desirable.
- <http://www.ametco.com/pdfs/08FIXEDLOUVER0013.pdf>



AMETCO MANUFACTURING CORPORATION  
4326 HAMANN PARKWAY P.O. BOX 1210  
WILLOUGHBY, OHIO 44096  
800-321-7042 TOLL FREE  
PHONE: (440) 951-4300  
FAX: (440) 951-2542  
www.ametco.com



#### NOTES

1. INSTALLATION TO BE COMPLETED IN ACCORDANCE WITH MANUFACTURER'S SPECIFICATIONS.
2. DO NOT SCALE DRAWINGS.

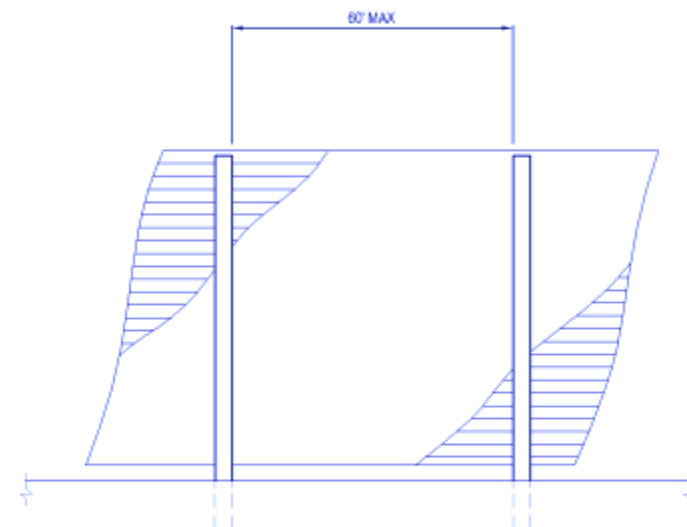


**VENETIAN ALUMINUM**

EXTRUSION CROSS-SECTION



AMETCO MANUFACTURING CORPORATION  
4326 HAMANN PARKWAY P.O. BOX 1210  
WILLOUGHBY, OHIO 44096  
800-321-7042 TOLL FREE  
PHONE: (440) 951-4300  
FAX: (440) 951-2542  
www.ametco.com



#### NOTES

1. INSTALLATION TO BE COMPLETED IN ACCORDANCE WITH MANUFACTURER'S SPECIFICATIONS.
2. DO NOT SCALE DRAWINGS.

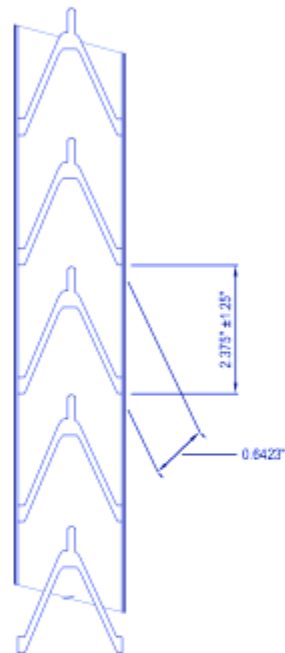


**VENETIAN ALUMINUM**

PANEL WIDTH



AMETCO MANUFACTURING CORPORATION  
4326 HAMANN PARKWAY P.O. BOX 1210  
WILLOUGHBY, OHIO 44096  
800-321-7042 TOLL FREE  
PHONE: (440) 951-4300  
FAX: (440) 951-2542  
[www.ametco.com](http://www.ametco.com)



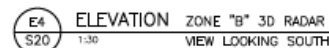
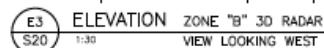
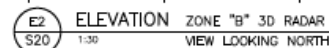
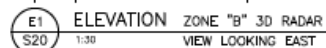
NOTES

1. INSTALLATION TO BE COMPLETED IN ACCORDANCE WITH MANUFACTURER'S SPECIFICATIONS.
2. DO NOT SCALE DRAWINGS.

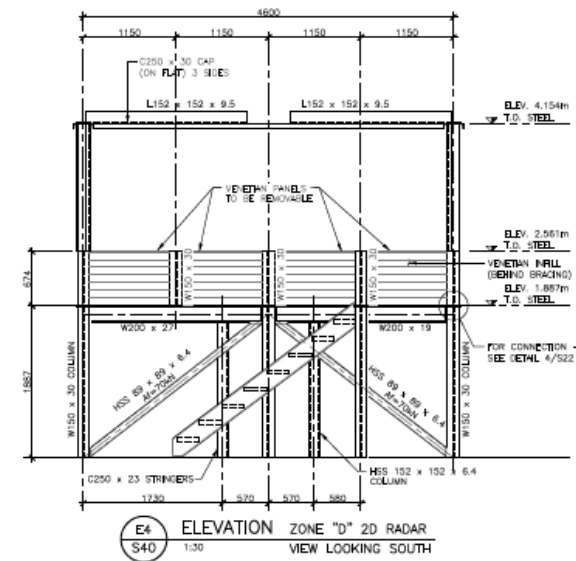
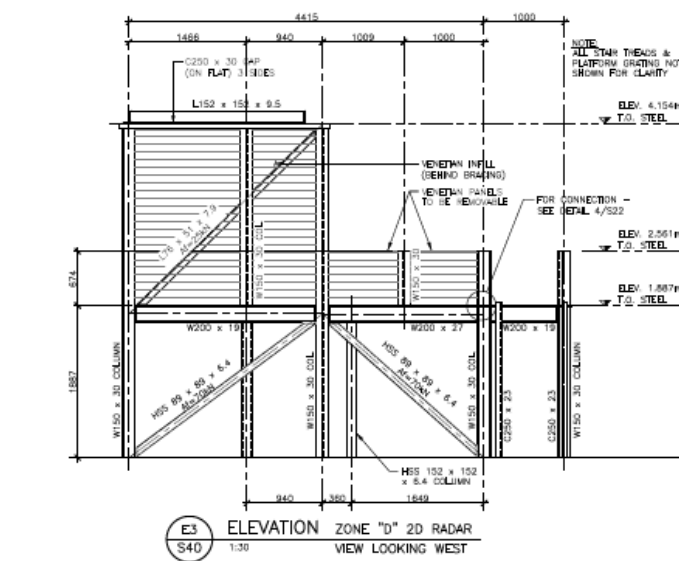
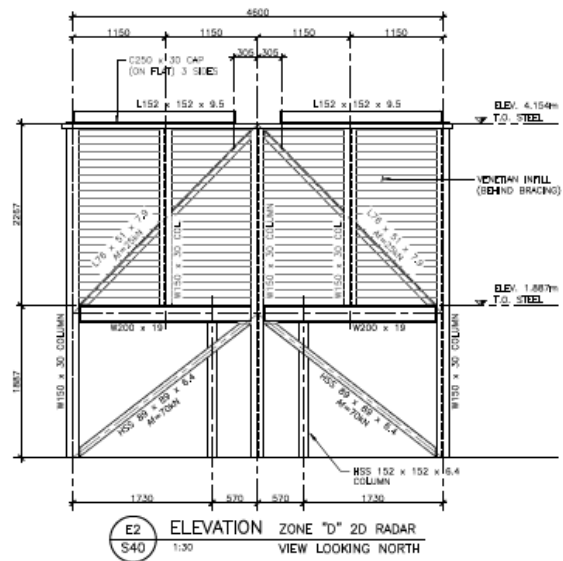
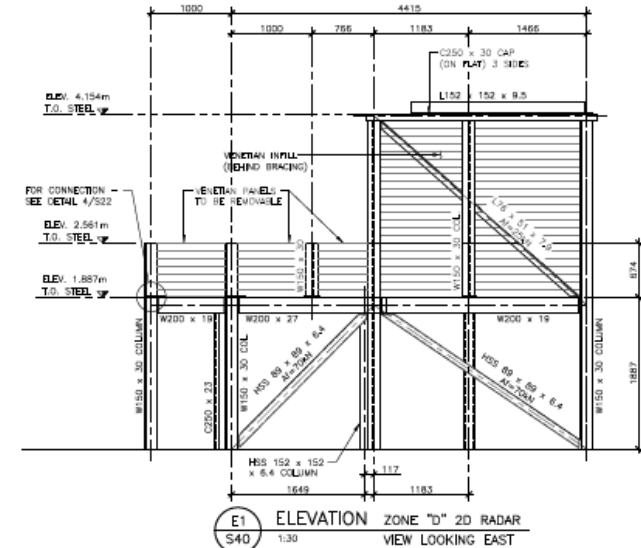
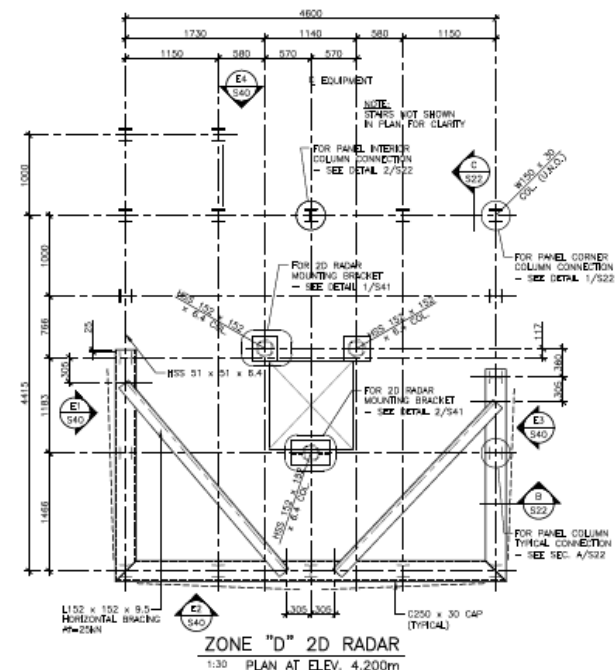
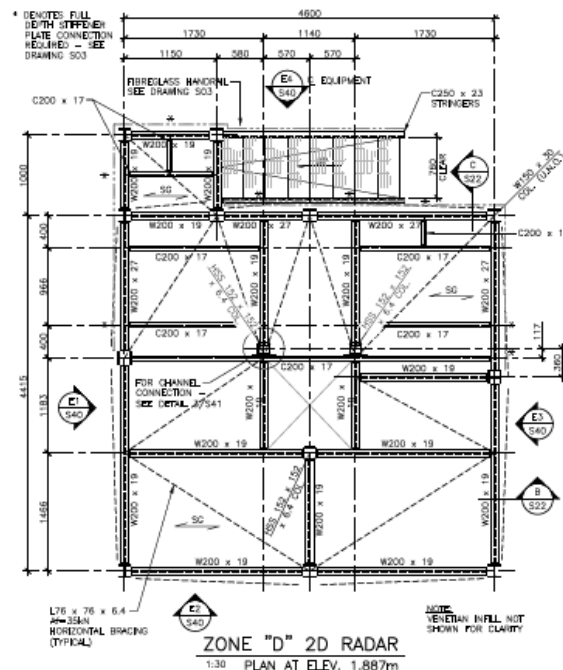


VENETIAN ALUMINUM

END VIEW



**S21**



- LEGEND:**
- SO DENOTES GALVANIZED STEEL GRATING SPAN DIRECTION.
  - C DENOTES FACTORED COMPRESSION FORCE FOR CONNECTION DESIGN.
  - T DENOTES FACTORED TENSION FORCE FOR CONNECTION DESIGN.
  - A DENOTES FACTORED AXIAL FORCE FOR CONNECTION DESIGN.

**LOOKHEED MARTIN**

**k**  
KNOX

Kennedy and Associates  
design consultants

201-100 angle ave.  
ottawa, on, canada k2p 1b6  
613 234 9927  
fax 334 9917

**FLEETWAY Inc.**

No.	Description	Date	By
2	ISSUED FOR GENERAL REFERENCE NOV 03/70	SEP	
1	ISSUED FOR CONSTRUCTION AUG 26/70	SEP	
0	ISSUED FOR TENDER JUL 30/70	SEP	
A	ISSUED FOR 90% REVIEW JUL 25/70	SEP	

Revision or Issue

LMC MATTS ROOFTOP PLATFORM

STRUCTURAL

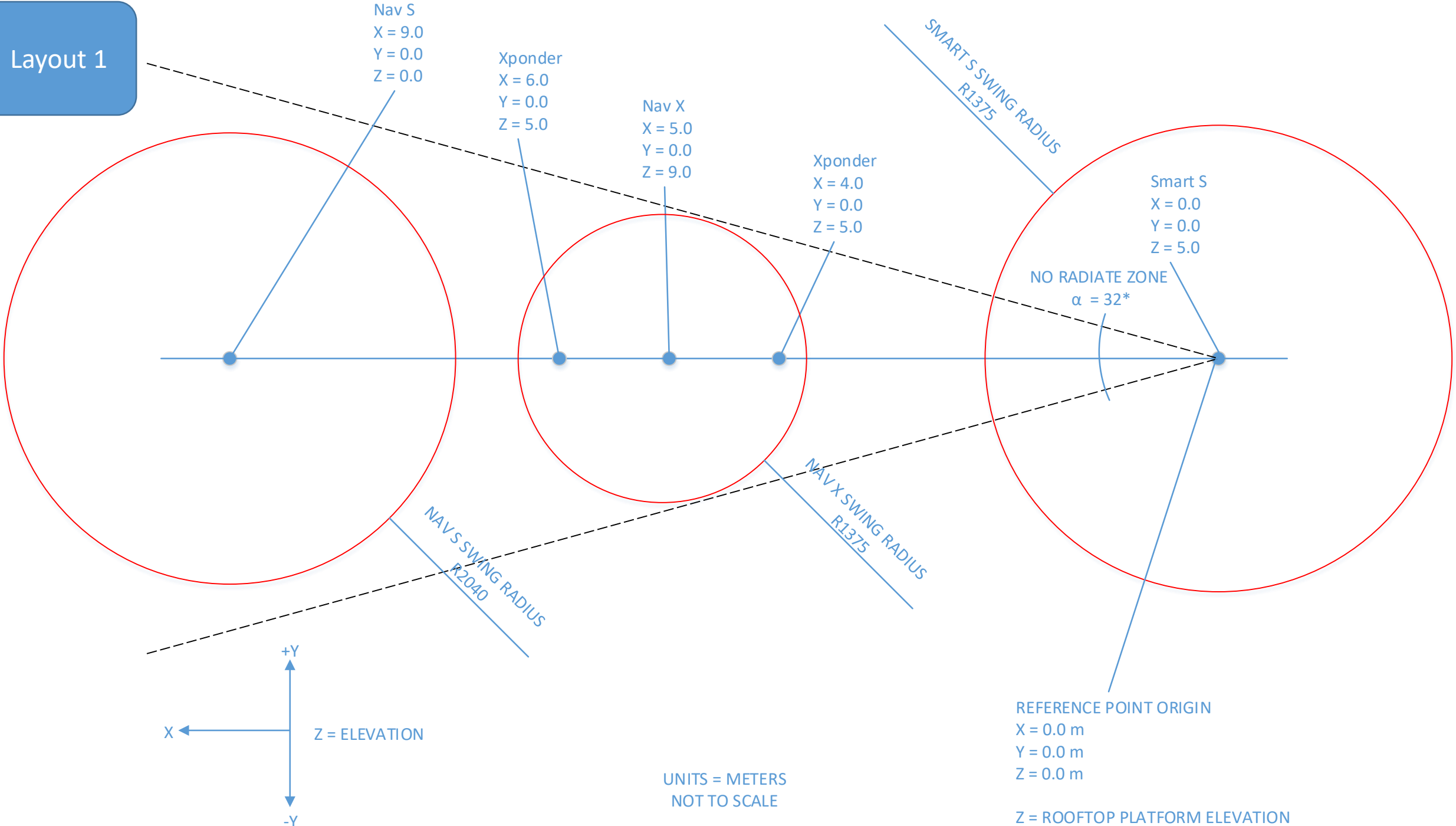
ZONE "D"

2D RADAR PLATFORM LAYOUT & ELEVATIONS

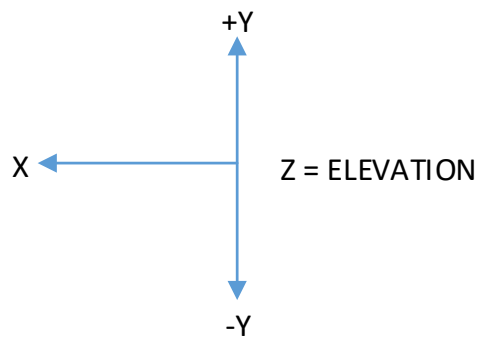
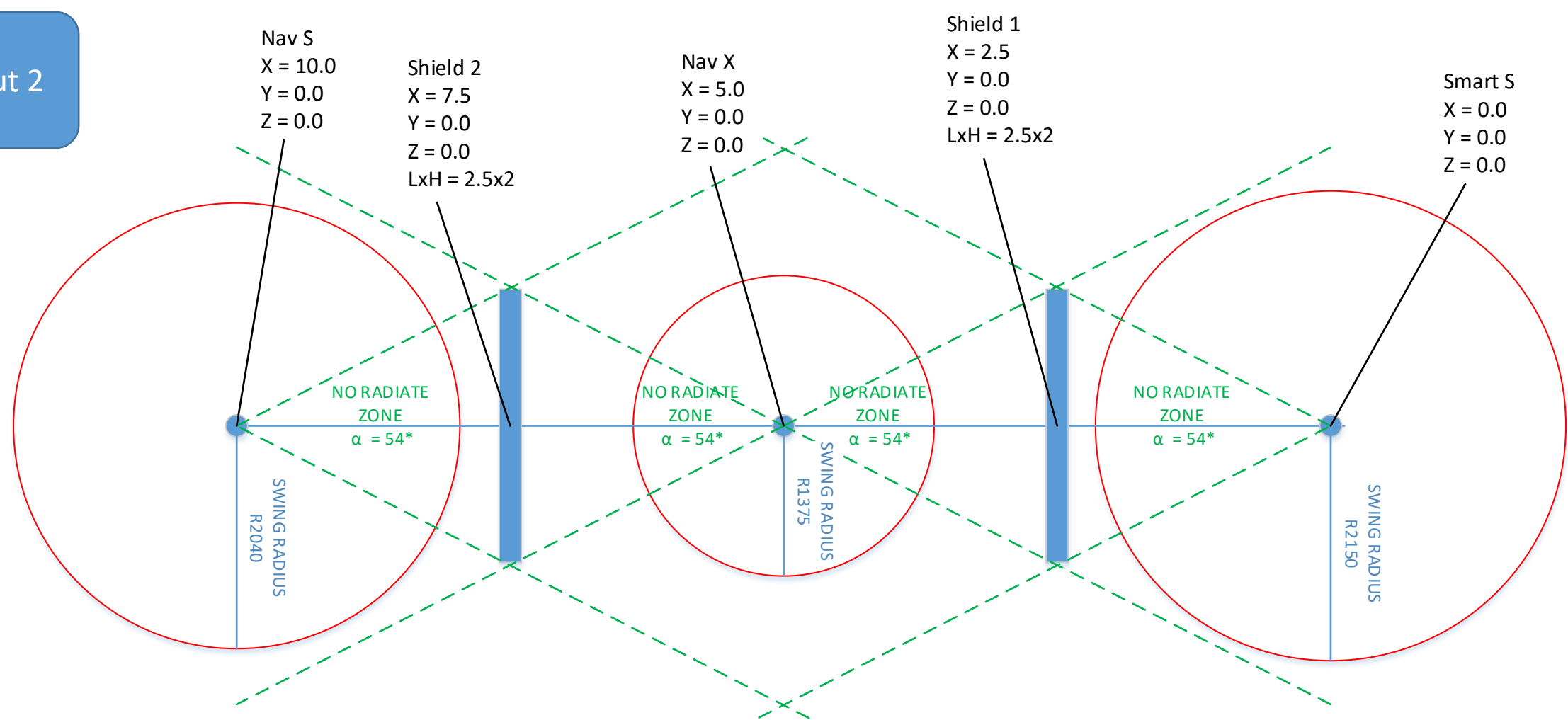
**CBCL CBCL LIMITED**  
Consulting Engineers  
EO 4001 CERTIFIED

Scale: AS NOTED	Date: JULY 2010	Drawn: MST
Designed: JSD	Checked: JSD	Approved: MST
Project No: 100215.00	Revision: 2	
<b>S40</b>		

Layout 1



Layout 2

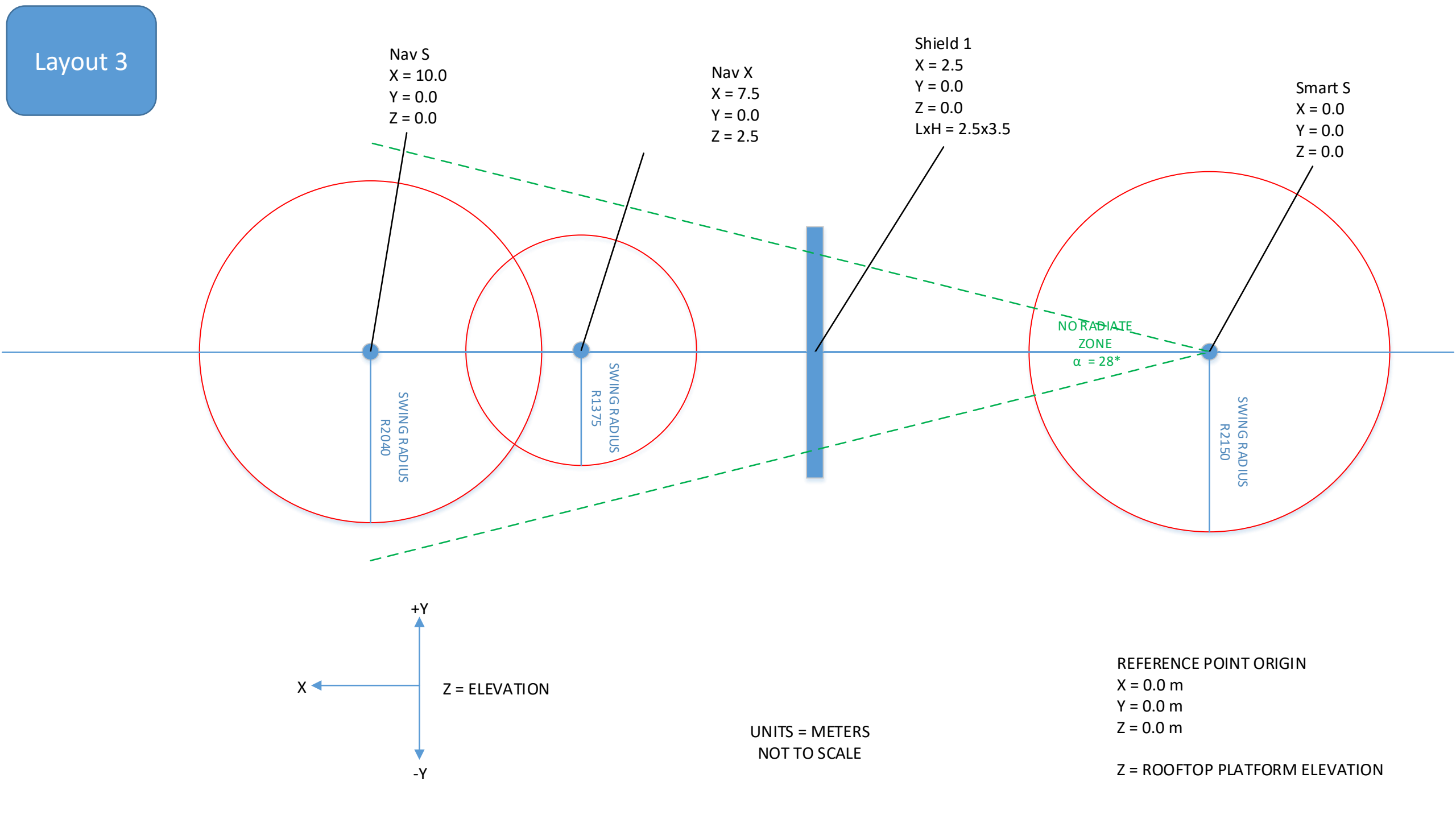


UNITS = METERS  
NOT TO SCALE

REFERENCE POINT ORIGIN  
X = 0.0 m  
Y = 0.0 m  
Z = 0.0 m

Z = ROOFTOP PLATFORM ELEVATION

Layout 3





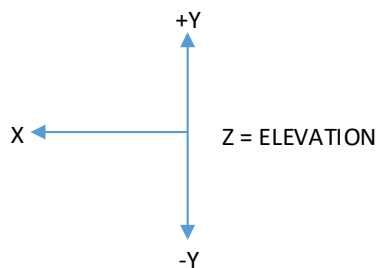
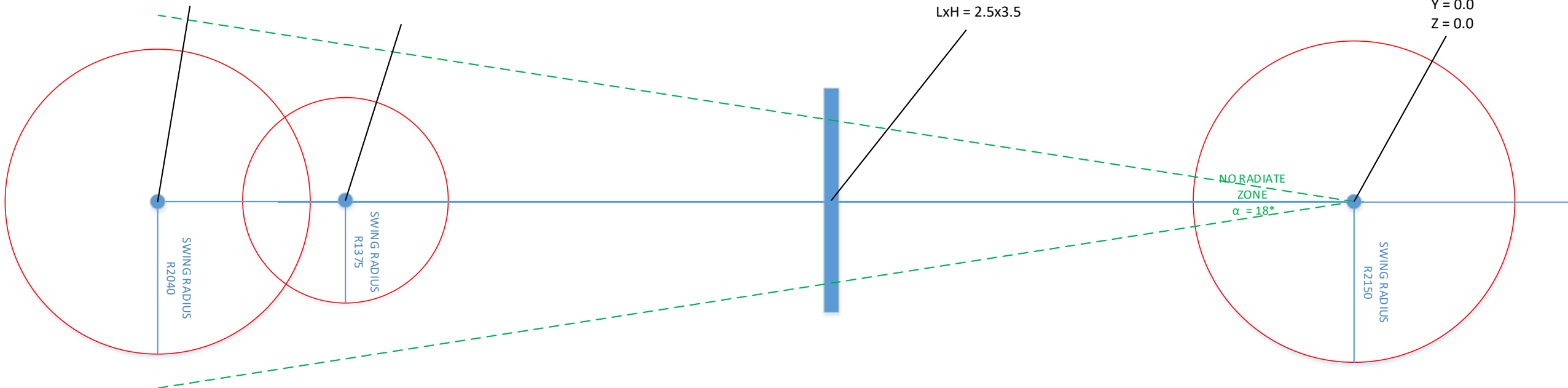
## Layout 4

Nav S  
X = 16.0  
Y = 0.0  
Z = 0.0

Nav X  
X = 13.5  
Y = 0.0  
Z = 2.5

Shield 1  
X = 7.0  
Y = 0.0  
Z = 0.0  
LxH = 2.5x3.5

Smart S  
X = 0.0  
Y = 0.0  
Z = 0.0



UNITS = METERS  
NOT TO SCALE

REFERENCE POINT ORIGIN  
X = 0.0 m  
Y = 0.0 m  
Z = 0.0 m

Z = ROOFTOP PLATFORM ELEVATION





Radar Survey (4)