



RETURN BIDS TO:

RETOURNER LES SOUMISSIONS À:

Public Works and Government Services Canada
Canada Place/Place du Canada
10th Floor/10e étage
9700 Jasper Ave/9700 ave Jasper
Edmonton
Alberta
T5J 4C3
Bid Fax: (780) 497-3510

**SOLICITATION AMENDMENT
MODIFICATION DE L'INVITATION**

The referenced document is hereby revised; unless otherwise indicated, all other terms and conditions of the Solicitation remain the same.

Ce document est par la présente révisé; sauf indication contraire, les modalités de l'invitation demeurent les mêmes.

Comments - Commentaires

Vendor/Firm Name and Address
Raison sociale et adresse du
fournisseur/de l'entrepreneur

Issuing Office - Bureau de distribution
Public Works and Government Services Canada
Canada Place / Place du Canada
10th Floor / 10e étage
9700 Jasper Ave / 9700 ave Jasper
Edmonton
Alberta
T5J 4C3

Title - Sujet Apartment Building Construction	
Solicitation No. - N° de l'invitation EW038-201920/A	Amendment No. - N° modif. 004
Client Reference No. - N° de référence du client PCA-EW038-201920	Date 2019-12-05
GETS Reference No. - N° de référence de SEAG PW-\$PWU-201-11726	
File No. - N° de dossier PWU-9-42151 (201)	CCC No./N° CCC - FMS No./N° VME
Solicitation Closes - L'invitation prend fin at - à 02:00 PM on - le 2019-12-13	Time Zone Fuseau horaire Mountain Standard Time MST
F.O.B. - F.A.B. Plant-Usine: <input type="checkbox"/> Destination: <input type="checkbox"/> Other-Autre: <input type="checkbox"/>	
Address Enquiries to: - Adresser toutes questions à: Ho (RPC), Hector	Buyer Id - Id de l'acheteur pwu201
Telephone No. - N° de téléphone (780) 901-0989 ()	FAX No. - N° de FAX (780) 497-3510
Destination - of Goods, Services, and Construction: Destination - des biens, services et construction:	

Instructions: See Herein

Instructions: Voir aux présentes

Delivery Required - Livraison exigée	Delivery Offered - Livraison proposée
Vendor/Firm Name and Address Raison sociale et adresse du fournisseur/de l'entrepreneur	
Telephone No. - N° de téléphone Facsimile No. - N° de télécopieur	
Name and title of person authorized to sign on behalf of Vendor/Firm (type or print) Nom et titre de la personne autorisée à signer au nom du fournisseur/ de l'entrepreneur (taper ou écrire en caractères d'imprimerie)	
Signature	Date

JASPER STAFF HOUSING CONSTRUCTION

5 PLEX

ADDENDUM No. 3

CLARIFICATIONS

- A.** Refer to revised Drawing E2.0 Power & Lighting Plan – Basement
 - 1. Add connections for radon fan RD-1 in mechanical room 03. Refer to the attached.
 - 2. Refer to mechanical addendum M01 for additional information and requirements.
 - 3. Coordinate exact location with Mechanical on site prior to rough in and installation.
 - B.** Refer to revised Drawing E3.0 Electrical Details & Risers
 - 1. Revise single line diagram. Refer to the attached.
 - a. Metering installation to be coordinated with the utility and the customer metering guidelines and requirements.
 - C.** Refer to revised Drawing E4.0 Electrical Schedules
 - a. Add 15A-1P breaker in panel N2L1 for connection to radon fan RD-1 per 1.1 above.
 - b. Refer to the attached.
 - D.** Refer to attached landscaping plan. Supply and install trees and shrubs, as identified on the plan. All grassed areas identified on Dwg A1.0 and on the Landscaping Plan are to be sod with a minimum 100mm depth of topsoil.
-

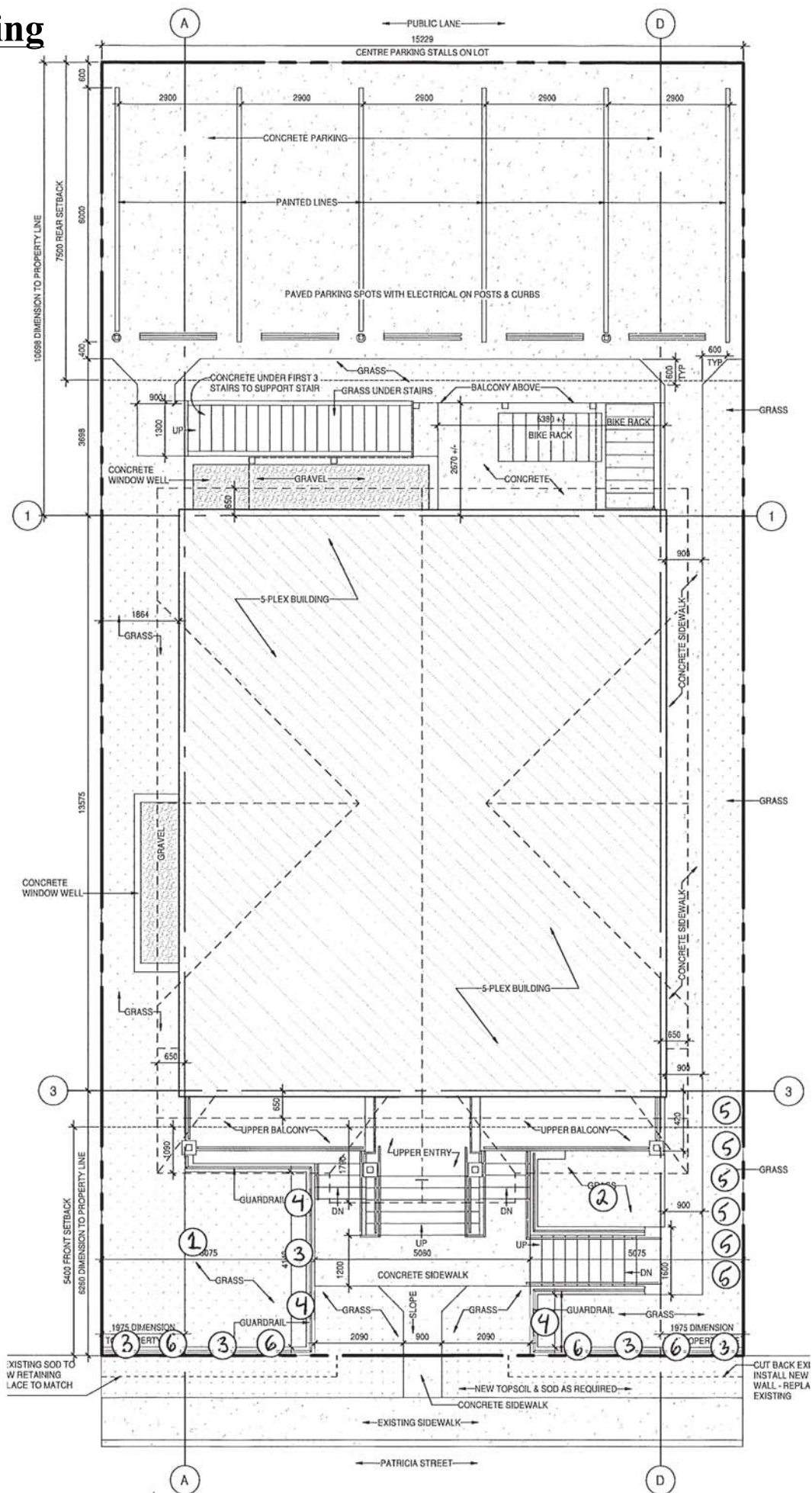
QUESTIONS and ANSWERS






- Q1** The Division 9 specifications it looks as if finishing materials have been selected for this project. Is there a list of these finishes available?
 - A1** Finishing materials can be provided by any supplier that meets the product specifications.
-

END OF ADDENDUM No. 3

(Total 1 page)

Landscaping Plan



<u>Common Name</u>	<u>Scientific Name</u>	<u>Number on Landscaping Plan</u>	<u>Quantity to Plant</u>	<u>Image</u>	<u>Specifications</u>
River birch	<i>Betula occidentalis</i>	1	1		<ul style="list-style-type: none"> • Caliper \geq 60mm diameter at 1.0m above grade • Min height \geq 4.0 m <p>Until survival is assured, newly planted trees which die shall be replaced.</p>
N/A	N/A	2	N/A	N/A	N/A
Shrubby Cinquefoil	<i>Potentilla fruticosa</i>	3	5		<ul style="list-style-type: none"> • Min height of 300mm
Prickly Rose	<i>Rosa acicularis</i> (earlier flowering)	4	3		<ul style="list-style-type: none"> • Min height of 300mm
Meadows weet	<i>Spiraea betulifolia</i>	5	6		<ul style="list-style-type: none"> • Min height of 200mm
Bog or Shrub Birch	<i>Betula glandulosa</i>	6	4		<ul style="list-style-type: none"> • Min height of 300mm

PSAC - A1 - 8410504

LUMINAIRE SCHEDULE									
Type	Description	Lamp	Voltage	NQ	Voltage	Model	Mounting	Remarks	
300	6" POT LIGHTING	LED	15	AS SHOWN	120	EATON	RECESSED	ALTERNATES WILL BE ACCEPTED BUT MUST MEET THE PERFORMANCE SPECIFIED PICTURE	
301	BEDROOM CEILING FAN	LED	13	AS SHOWN	120	TBD	CEILING	REFER TO NOTES ON ALTERNATES WILL BE ACCEPTED BUT MUST MEET THE PERFORMANCE SPECIFIED PICTURE	
302	KITCHEN PENDANT	LED	AS SHOWN	120	KUCCO	PD-304-BZ	PENDANT	ALTERNATES WILL BE ACCEPTED BUT MUST MEET THE PERFORMANCE SPECIFIED PICTURE	
303	BATHROOM VARIETY	LED	AS SHOWN	120	KUCCO	701104	WALL	ALTERNATES WILL BE ACCEPTED BUT MUST MEET THE PERFORMANCE SPECIFIED PICTURE	
304	STORAGE / MESH ROOM	LED	AS SHOWN	120	LITONIA	WL4-40L-EZ1-UP80	CEILING / SURFACE	ALTERNATES WILL BE ACCEPTED BUT MUST MEET THE PERFORMANCE SPECIFIED PICTURE	
305	STARWELL	LED	AS SHOWN	120	LITONIA	WC-232-120-GE0D18	WALL	ALTERNATES WILL BE ACCEPTED BUT MUST MEET THE PERFORMANCE SPECIFIED PICTURE	
306	SUITE EXTERIOR	LED	AS SHOWN	120	LITONIA	OLCS4-00B	WALL	ALTERNATES WILL BE ACCEPTED BUT MUST MEET THE PERFORMANCE SPECIFIED PICTURE	
307	EXT BRICK WALL SOURCE	LED	AS SHOWN	AS SHOWN	WAC	WS-W9101-4BZ	WALL	ALTERNATES WILL BE ACCEPTED BUT MUST MEET THE PERFORMANCE SPECIFIED PICTURE	
BPI	BATTERY PACK	LED	AS SHOWN		Emergi-Lite®	ESL Series		ALTERNATES WILL BE ACCEPTED BUT MUST MEET THE PERFORMANCE SPECIFIED PICTURE	
EX1	EXIT LIGHT	LED	AS SHOWN		Lumicell®	LAETAKD		ALTERNATES WILL BE ACCEPTED BUT MUST MEET THE PERFORMANCE SPECIFIED PICTURE	
RM1	REMOTE HEAD	LED	AS SHOWN		Emergi-Lite®	EF9		ALTERNATES WILL BE ACCEPTED BUT MUST MEET THE PERFORMANCE SPECIFIED PICTURE	

NOTES: ALL FIXTURES TO BE LAMPED WITH LED BULBS.

Branch Panel: N2L1												
MECHANICAL ROOM 03												
Supply From: Surface												
Enduse: NEMA 1 Indoor												
Notes:												
A.I.C. Rating: UseShortCircuitCurrentRating & Refer L												
Main Type: Mechanical												
Main Rating: 250 A												
MCB Rating:												
Notes:												
Vols: 120/240 Single												
Phases: 1												
Wires: 3												
Enduse: NEMA 1 Indoor												
Notes:												
A.I.C. Rating: UseShortCircuitCurrentRating & Refer L												
Main Type: Mechanical												
Main Rating: 250 A												
MCB Rating:												
Notes:												
Vols: 120/240 Single												
Phases: 1												
Wires: 3												
Enduse: NEMA 1 Indoor												
Notes:												
A.I.C. Rating: UseShortCircuitCurrentRating & Refer L												
Main Type: Mechanical												
Main Rating: 250 A												
MCB Rating:												
Notes:												
Vols: 120/240 Single												
Phases: 1												
Wires: 3												
Enduse: NEMA 1 Indoor												
Notes:												
A.I.C. Rating: UseShortCircuitCurrentRating & Refer L												
Main Type: Mechanical												
Main Rating: 250 A												
MCB Rating:												
Notes:												
Vols: 120/240 Single												
Phases: 1												
Wires: 3												
Enduse: NEMA 1 Indoor												
Notes:												
A.I.C. Rating: UseShortCircuitCurrentRating & Refer L												
Main Type: Mechanical												
Main Rating: 250 A												
MCB Rating:												
Notes:												
Vols: 120/240 Single												
Phases: 1												
Wires: 3												
Enduse: NEMA 1 Indoor												
Notes:												
A.I.C. Rating: UseShortCircuitCurrentRating & Refer L												
Main Type: Mechanical												
Main Rating: 250 A												
MCB Rating:												
Notes:												
Vols: 120/240 Single												
Phases: 1												
Wires: 3												
Enduse: NEMA 1 Indoor												
Notes:												
A.I.C. Rating: UseShortCircuitCurrentRating & Refer L												
Main Type: Mechanical												
Main Rating: 250 A												
MCB Rating:												
Notes:												
Vols: 120/240 Single												
Phases: 1												
Wires: 3												
Enduse: NEMA 1 Indoor												
Notes:												
A.I.C. Rating: UseShortCircuitCurrentRating & Refer L												
Main Type: Mechanical												
Main Rating: 250 A												
MCB Rating:												
Notes:												
Vols: 120/240 Single												
Phases: 1												
Wires: 3												
Enduse: NEMA 1 Indoor												
Notes:												
A.I.C. Rating: UseShortCircuitCurrentRating & Refer L												
Main Type: Mechanical												
Main Rating: 250 A												
MCB Rating:												
Notes:												
Vols: 120/240 Single												
Phases: 1												
Wires: 3												
Enduse: NEMA 1 Indoor												
Notes:												
A.I.C. Rating: UseShortCircuitCurrentRating & Refer L												
Main Type: Mechanical												
Main Rating: 250 A												
MCB Rating:												
Notes:												
Vols: 120/240 Single												
Phases: 1												
Wires: 3												
Enduse: NEMA 1 Indoor												
Notes:												
A.I.C. Rating: UseShortCircuitCurrentRating & Refer L												
Main Type: Mechanical												
Main Rating: 250 A												
MCB Rating:												
Notes:												
Vols: 120/240 Single												
Phases: 1												
Wires: 3												
Enduse: NEMA 1 Indoor												
Notes:												
A.I.C. Rating: UseShortCircuitCurrentRating & Refer L												
Main Type: Mechanical												
Main Rating: 250 A												
MCB Rating:												
Notes:												
Vols: 120/240 Single												
Phases: 1												
Wires: 3												
Enduse: NEMA 1 Indoor												
Notes:												
A.I.C. Rating: UseShortCircuitCurrentRating & Refer L												
Main Type: Mechanical												
Main Rating: 250 A												
MCB Rating:												
Notes:												
Vols: 120/240 Single												
Phases: 1												
Wires: 3												
Enduse: NEMA 1 Indoor												
Notes:												
A.I.C. Rating: UseShortCircuitCurrentRating & Refer L												
Main Type: Mechanical												
Main Rating: 250 A												
MCB Rating:												
Notes:												
Vols: 120/240 Single												
Phases: 1												
Wires: 3												
Enduse: NEMA 1 Indoor												
Notes:												
A.I.C. Rating: UseShortCircuitCurrentRating & Refer L												
Main Type: Mechanical												
Main Rating: 250 A												
MCB Rating:												
Notes:												
Vols: 120/240 Single												
Phases: 1												
Wires: 3												
Enduse: NEMA 1 Indoor												
Notes:												
A.I.C. Rating: UseShortCircuitCurrentRating & Refer L												
Main Type: Mechanical												
Main Rating: 250 A												
MCB Rating:												
Notes:												
Vols: 120/240 Single												
Phases: 1												
Wires: 3												
Enduse: NEMA 1 Indoor												
Notes:												
A.I.C. Rating: UseShortCircuitCurrentRating & Refer L												
Main Type: Mechanical												
Main Rating: 250 A												
MCB Rating:												
Notes:												
Vols: 120/240 Single												
Phases: 1												
Wires: 3												
Enduse: NEMA 1 Indoor												
Notes:												
A.I.C. Rating: UseShortCircuitCurrentRating & Refer L												
Main Type: Mechanical												
Main Rating: 250 A												
MCB Rating:												
Notes:												
Vols: 120/240 Single												
Phases: 1												
Wires: 3												
Enduse: NEMA 1 Indoor												
Notes:												
A.I.C. Rating: UseShortCircuitCurrentRating & Refer L												
Main Type: Mechanical												
Main Rating: 250 A												
MCB Rating:												
Notes:												
Vols: 120/240 Single												
Phases: 1												
Wires: 3												
Enduse: NEMA 1 Indoor												
Notes:												
A.I.C. Rating: UseShortCircuitCurrentRating & Refer L												
Main Type: Mechanical												
Main Rating: 250 A												
MCB Rating:												
Notes:												
Vols: 120/240 Single												
Phases: 1												
Wires: 3												
Enduse: NEMA 1 Indoor												
Notes:												
A.I.C. Rating: UseShortCircuitCurrentRating & Refer L												
Main Type: Mechanical												
Main Rating: 250 A												
MCB Rating:												
Notes:												
Vols: 120/240 Single												
Phases: 1												
Wires: 3												
Enduse: NEMA 1 Indoor												
Notes:												
A.I.C. Rating: UseShortCircuitCurrentRating & Refer L												
Main Type: Mechanical												
Main Rating: 250 A												
MCB Rating:												
Notes:												
Vols: 120/240 Single												
Phases: 1												
Wires: 3												
Enduse: NEMA 1 Indoor												
Notes:												
A.I.C. Rating: UseShortCircuitCurrentRating & Refer L												
Main Type: Mechanical												
Main Rating: 250 A												
MCB Rating:												
Notes:												
Vols: 120/240 Single												
Phases: 1												
Wires: 3												
Enduse: NEMA 1 Indoor												
Notes:												
A.I.C. Rating: UseShortCircuitCurrentRating & Refer L												
Main Type: Mechanical												
Main Rating: 250 A												
MCB Rating:												
Notes:												
Vols: 120/240 Single												
Phases: 1												
Wires: 3												
Enduse: NEMA 1 Indoor												
Notes:												
A.I.C. Rating: UseShortCircuitCurrentRating & Refer L												
Main Type: Mechanical												
Main Rating: 250 A												
MCB Rating:												
Notes:												
Vols: 120/240 Single												
Phases: 1												
Wires: 3												
Enduse: NEMA 1 Indoor												
Notes:												
A.I.C. Rating: UseShortCircuitCurrentRating & Refer L												
Main Type: Mechanical												
Main Rating: 250 A												
MCB Rating:												
Notes:												
Vols: 120/240 Single												
Phases: 1												
Wires: 3												
Enduse: NEMA 1 Indoor												
Notes:												
A.I.C. Rating: UseShortCircuitCurrentRating & Refer L												
Main Type: Mechanical												
Main Rating: 250 A												
MCB Rating:												
Notes:												
Vols: 120/240 Single												
Phases: 1												
Wires: 3												
Enduse: NEMA 1 Indoor												
Notes:												
A.I.C. Rating: UseShortCircuitCurrentRating & Refer L												
Main Type: Mechanical												
Main Rating: 250 A												
MCB Rating:												
Notes:												
Vols: 120/240 Single												
Phases: 1												
Wires: 3												
Enduse: NEMA 1 Indoor												
Notes:												
A.I.C. Rating: UseShortCircuitCurrentRating & Refer L												
Main Type: Mechanical												
Main Rating: 250 A												
MCB Rating:												
Notes:												
Vols: 120/240 Single												
Phases: 1												
Wires: 3												
Enduse: NEMA 1 Indoor												
Notes:												
A.I.C. Rating: UseShortCircuitCurrentRating & Refer L												
Main Type: Mechanical												
Main Rating: 250 A												
MCB Rating:												
Notes:												
Vols: 120/240 Single												
Phases: 1												
Wires: 3												
Enduse: NEMA 1 Indoor												
Notes:												
A.I.C. Rating: UseShortCircuitCurrentRating & Refer L												
Main Type: Mechanical												
Main Rating: 250 A												
MCB Rating:												
Notes:												
Vols: 120/240 Single												
Phases: 1												
Wires: 3												
Enduse: NEMA 1 Indoor												
Notes:												
A.I.C. Rating: UseShortCircuitCurrentRating & Refer L												
Main Type: Mechanical												
Main Rating: 250 A												
MCB Rating:												
Notes:												
Vols: 120/240 Single												
Phases: 1												
Wires: 3												
Enduse: NEMA 1 Indoor												
Notes:												
A.I.C. Rating: UseShortCircuitCurrentRating & Refer L												
Main Type: Mechanical												
Main Rating: 250 A												
MCB Rating:												
Notes:												
Vols: 120/240 Single												
Phases: 1												
Wires: 3												
Enduse: NEMA 1 Indoor												
Notes:												
A.I.C. Rating: UseShortCircuitCurrentRating & Refer L												
Main Type: Mechanical												
Main Rating: 250 A												
MCB Rating:												
Notes:												
Vols: 120/240 Single												
Phases: 1												
Wires: 3												
Enduse: NEMA 1 Indoor												
Notes:												
A.I.C. Rating: UseShortCircuitCurrentRating & Refer L												
Main Type: Mechanical												
Main Rating: 250 A												
MCB Rating:												
Notes:												
Vols: 120/240 Single												
Phases: 1												
Wires: 3												
Enduse: NEMA 1 Indoor												
Notes:												
A.I.C. Rating: UseShortCircuitCurrentRating & Refer L												
Main Type: Mechanical												
Main Rating: 250 A												
MCB Rating:												
Notes:												
Vols: 120/240 Single												
Phases: 1												
Wires: 3												
Enduse: NEMA 1 Indoor												
Notes:												
A.I.C. Rating: UseShortCircuitCurrentRating & Refer L												
Main Type: Mechanical												
Main Rating: 250 A												
MCB Rating:												
Notes:												
Vols: 120/240 Single												
Phases: 1												
Wires: 3												
Enduse: NEMA 1 Indoor												
Notes:												
A.I.C. Rating: UseShortCircuitCurrentRating & Refer L												
Main Type: Mechanical												
Main Rating: 250 A												
MCB Rating:												
Notes:												
Vols: 120/240 Single												
Phases: 1												
Wires: 3												
Enduse: NEMA 1 Indoor												
Notes:												
A.I.C. Rating: UseShortCircuitCurrentRating & Refer L												
Main Type: Mechanical												
Main Rating: 250 A												
MCB Rating:												
Notes:												
Vols: 120/240 Single												
Phases: 1												
Wires: 3												
Enduse: NEMA 1 Indoor												
Notes:												
A.I.C. Rating: UseShortCircuitCurrentRating & Refer L												
Main Type: Mechanical												
Main Rating: 250 A												
MCB Rating:												
Notes:												
Vols: 120/240 Single												
Phases: 1												
Wires: 3												
Enduse: NEMA 1 Indoor												
Notes:												
A.I.C. Rating: UseShortCircuitCurrentRating & Refer L												
Main Type: Mechanical												
Main Rating: 250 A												
MCB Rating:												
Notes:												
Vols: 120/240 Single												
Phases: 1												
Wires: 3												
Enduse: NEMA 1 Indoor												
Notes:												
A.I.C. Rating: UseShortCircuitCurrentRating & Refer L												
Main Type: Mechanical												
Main Rating: 250 A												
MCB Rating:												
Notes:												
Vols: 120/240 Single												
Phases: 1												
Wires: 3												
Enduse: NEMA 1 Indoor												
Notes:												
A.I.C. Rating: UseShortCircuitCurrentRating & Refer L												
Main Type: Mechanical												
Main Rating: 250 A												
MCB Rating:												
Notes:												
Vols: 120/240 Single												
Phases: 1												
Wires: 3												
Enduse: NEMA 1 Indoor												
Notes:												
A.I.C. Rating: UseShortCircuitCurrentRating & Refer L												
Main Type: Mechanical												
Main Rating: 250 A												
MCB Rating:												
Notes:												
Vols: 120/240 Single												
Phases: 1												
Wires: 3												
Enduse: NEMA 1 Indoor												
Notes:												
A.I.C. Rating: UseShortCircuitCurrentRating & Refer L												
Main Type: Mechanical												
Main Rating: 250 A												
MCB Rating:												
Notes:												
Vols: 120/240 Single												
Phases: 1												
Wires: 3												
Enduse: NEMA 1 Indoor												
Notes:												
A.I.C. Rating: UseShortCircuitCurrentRating & Refer L												
Main Type: Mechanical												
Main Rating: 250 A												
MCB Rating:												
Notes:												
Vols: 120/240 Single												
Phases: 1												
Wires: 3												
Enduse: NEMA 1 Indoor												
Notes:												
A.I.C. Rating: UseShortCircuitCurrentRating & Refer L												
Main Type: Mechanical												
Main Rating: 250 A												
MCB Rating:												
Notes:												
Vols: 120/240 Single												
Phases: 1												
Wires: 3												
Enduse: NEMA 1 Indoor												
Notes:												
A.I.C. Rating: UseShortCircuitCurrentRating & Refer L												
Main Type: Mechanical												
Main Rating: 250 A												
MCB Rating:												
Notes:												
Vols: 120/240 Single												
Phases: 1												
Wires: 3												
Enduse: NEMA 1 Indoor												
Notes:												
A.I.C. Rating: UseShortCircuitCurrentRating & Refer L												
Main Type: Mechanical												
Main Rating: 250 A												
MCB Rating:												
Notes:												
Vols: 120/240 Single												
Phases: 1												
Wires: 3												
Enduse: NEMA 1 Indoor												
Notes:												
A.I.C. Rating: UseShortCircuitCurrentRating & Refer L												
Main Type: Mechanical												
Main Rating: 250 A												
MCB Rating:												
Notes:												
Vols: 120/240 Single												
Phases: 1												
Wires: 3												
Enduse: NEMA 1 Indoor												
Notes:												
A.I.C. Rating: UseShortCircuitCurrentRating & Refer L												
Main Type: Mechanical												
Main Rating: 250 A												
MCB Rating:												
Notes:												
Vols: 120/240 Single												
Phases: 1												
Wires: 3												
Enduse: NEMA 1 Indoor												
Notes:												
A.I.C. Rating: UseShortCircuitCurrentRating & Refer L												
Main Type: Mechanical												
Main Rating: 250 A												
MCB Rating:												
Notes:												
Vols: 120/240 Single												
Phases: 1												
Wires: 3												
Enduse: NEMA 1 Indoor												
Notes:												
A.I.C. Rating: UseShortCircuitCurrentRating & Refer L												
Main Type: Mechanical												
Main Rating: 250 A												
MCB Rating:												
Notes:												
Vols: 120/240 Single												
Phases: 1												
Wires: 3												
Enduse: NEMA 1 Indoor												
Notes:												
A.I.C. Rating: UseShortCircuitCurrentRating & Refer L												
Main Type: Mechanical												
Main Rating: 250 A												
MCB Rating:												
Notes:												
Vols: 120/240 Single												
Phases: 1												
Wires: 3												
Enduse: NEMA 1 Indoor												
Notes:												
A.I.C. Rating: UseShortCircuitCurrentRating & Refer L												
Main Type: Mechanical												
Main Rating: 250 A												
MCB Rating:												
Notes:												
Vols: 120/240 Single												
Phases: 1												
Wires: 3												
Enduse: NEMA 1 Indoor												
Notes:												
A.I.C. Rating: UseShortCircuitCurrentRating & Refer L												
Main Type: Mechanical												
Main Rating: 250 A												
MCB Rating:												
Notes:												
Vols: 120/240 Single												
Phases: 1												
Wires: 3												
Enduse: NEMA 1 Indoor												
Notes:												
A.I.C. Rating: UseShortCircuitCurrentRating & Refer L												
Main Type: Mechanical												
Main Rating: 250 A												
MCB Rating:												
Notes:												
Vols: 120/240 Single												
Phases: 1												
Wires: 3												
Enduse: NEMA 1 Indoor												
Notes:												
A.I.C. Rating: UseShortCircuitCurrentRating & Refer L												
Main Type: Mechanical												
Main Rating: 250 A												
MCB Rating:												
Notes:												
Vols: 120/240 Single												
Phases: 1												
Wires: 3												
Enduse: NEMA 1 Indoor												
Notes:												
A.I.C. Rating: UseShortCircuitCurrentRating & Refer L												
Main Type: Mechanical												
Main Rating: 250 A												
MCB Rating:												
Notes:												
Vols: 120/240 Single												
Phases: 1												
Wires: 3												
Enduse: NEMA 1 Indoor												
Notes:												
A.I.C. Rating: UseShortCircuitCurrentRating & Refer L												
Main Type: Mechanical												
Main Rating: 250 A												
MCB Rating:												
Notes:												
Vols: 120/240 Single												
Phases: 1												
Wires: 3												
Enduse: NEMA 1 Indoor												
Notes:												
A.I.C. Rating: UseShortCircuitCurrentRating & Refer L												
Main Type: Mechanical												
Main Rating: 250 A												
MCB Rating:												
Notes:												
Vols: 120/240 Single												
Phases: 1												
Wires: 3												
Enduse: NEMA 1 Indoor												
Notes:												
A.I.C. Rating: UseShortCircuitCurrentRating & Refer L												
Main Type: Mechanical												
Main Rating: 250 A												
MCB Rating:												
Notes:												
Vols: 120/240 Single												
Phases: 1												
Wires: 3												
Enduse: NEMA 1 Indoor												
Notes:												
A.I.C. Rating: UseShortCircuitCurrentRating & Refer L												
Main Type: Mechanical												
Main Rating: 250 A												
MCB Rating:												
Notes:												
Vols: 120/240 Single												
Phases: 1												
Wires: 3												
Enduse: NEMA 1 Indoor												
Notes:												
A.I.C. Rating: UseShortCircuitCurrentRating & Refer L												
Main Type: Mechanical												
Main Rating: 250 A												