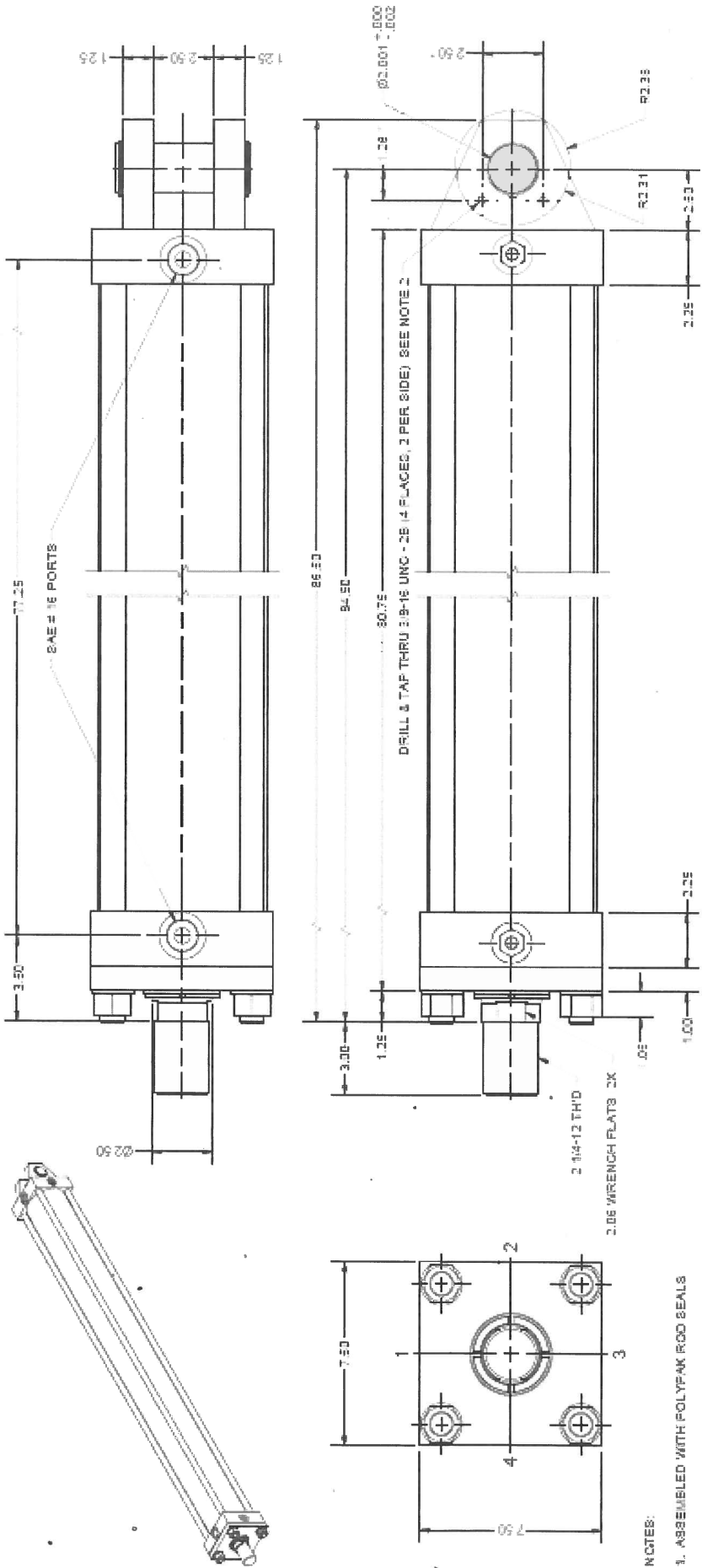


Maximum Pressure (PSI)

Gland Seal Kit

Piston Seal Kit

SEE NOTE 4



DIMENSIONS IDENTIFIED WITH * ARE NON-STANDARD

- NOTES:
- 1. ASSEMBLED WITH POLYFAK ROD SEALS
 - 2. FOUR HOLES, TWO PER SIDE, DRILLED AND TAPPED INTO BS MOUNT PER CUSTOMER-SUPPLIED DRAWING 9-4-11
 - 3. HEAD END STOP TUBE, 1.875" LONG, NET STROKE = 7.0500"
 - 4. AT A 4:1 DESIGN FACTOR, MAXIMUM EXTEND PRESSURE IS 313 PSI AND MAXIMUM RETRACT PRESSURE IS 2318 PSI.
 - 5. CLASS 1 BEALS SUITABLE FOR -10°F (-23°C) TO +155°F (+75°C)
 - 6. PAINTED WITH INORGANIC ZINC PRIMER