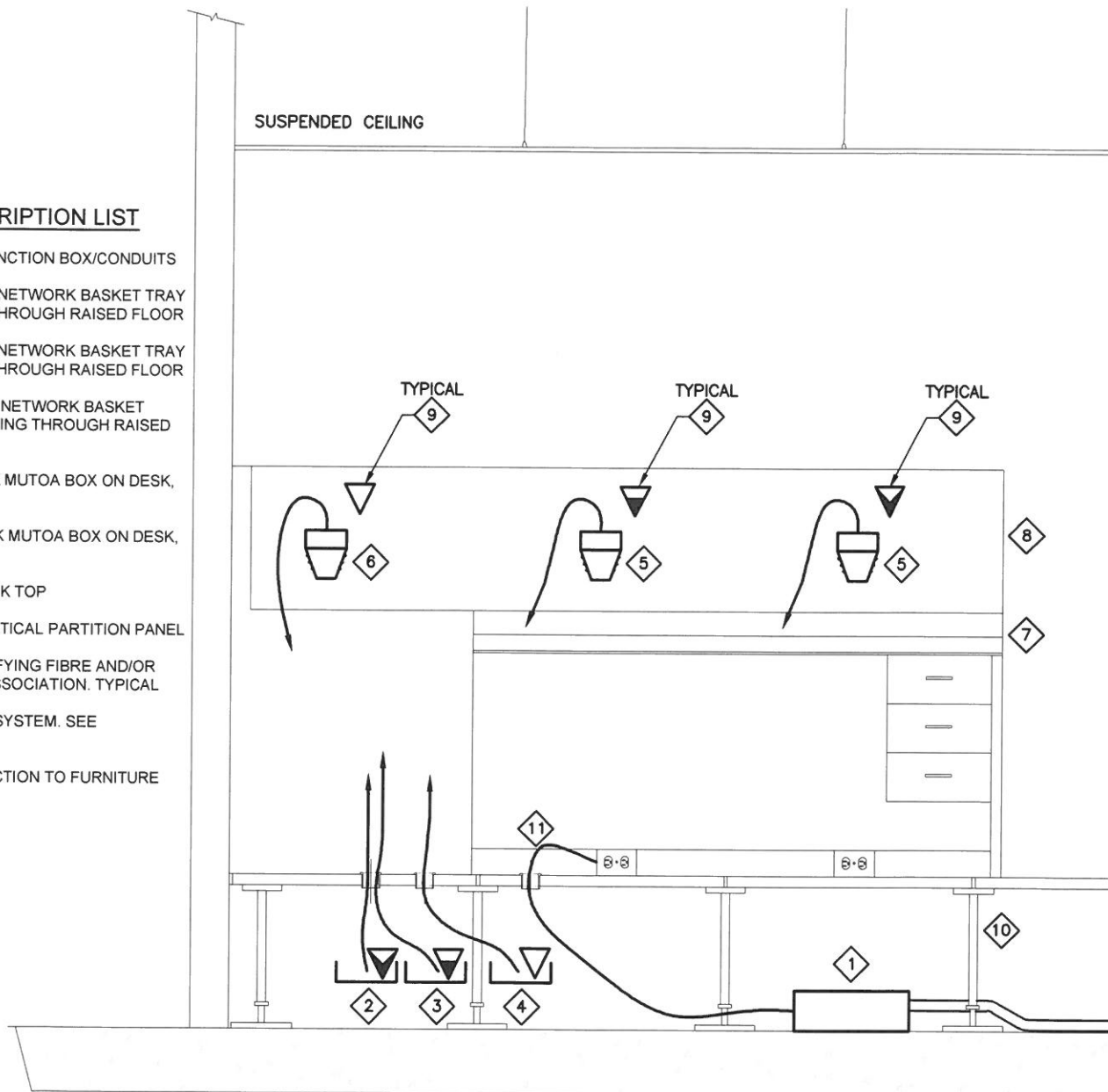


SUSPENDED CEILING

ITEM DESCRIPTION LIST

- 1 ELECTRICAL JUNCTION BOX/CONDUITS
- 2 GROUP 1 DATA NETWORK BASKET TRAY AND CABLING THROUGH RAISED FLOOR
- 3 GROUP 2 DATA NETWORK BASKET TRAY AND CABLING THROUGH RAISED FLOOR
- 4 GROUP 3 FIBRE NETWORK BASKET TRAY AND CABLING THROUGH RAISED FLOOR
- 5 DATA NETWORK MUTOA BOX ON DESK, SEE E300
- 6 FIBRE NETWORK MUTOA BOX ON DESK, SEE E300
- 7 FURNITURE DESK TOP
- 8 FURNITURE VERTICAL PARTITION PANEL
- 9 SYMBOL IDENTIFYING FIBRE AND/OR DATA GROUP ASSOCIATION. TYPICAL
- 10 RAISED FLOOR SYSTEM. SEE ARCHITECTURE
- 11 POWER CONNECTION TO FURNITURE



NOTES:

POWER AND NETWORK CABLING BUNDLES TO BE ROUTED ACCORDINGLY
BASED ON FURNITURE CABLING CONFIGURATION.

6 TYPICAL WORKSTATION DATA/FIBRE NETWORK CABLING DETAIL

NOT TO SCALE