



**A1. HEALTH CANADA BID RECEIVING UNIT
FEDERAL RECORDS CENTRE BUILDING**

Bid submission envelopes are to be delivered to the following address prior to,
January 20, 2020 at 2:00PM

161 Goldenrod Driveway, Tunney's Pasture
Loading dock of building #18,
Ottawa, ON K1A 0K9 CANADA
Business hours: 7h30 to 16h30

Attention: Diana Seguin
Telephone: 613-941-2103
Solicitation #: 1000218011

A2. TITLE Radiation Protection Building- New Generator Tap Box and supply temporary generator power	
A3. SOLICITATION NUMBER 1000218011	A4. SOLICITATION DATE 2020-01-06
A5. AUTHORITY The Authority for this ITT is: Diana Seguin Senior Procurement and Contracting Officer Chief Financial Officer Branch Ottawa, Ontario Telephone: 613-941-2103 Email: diana.seguin@canada.ca	

Invitation to Tender (ITT)

**THIS ITT CONTAINS A SECURITY
REQUIREMENT**

TABLE OF CONTENTS

SPECIAL INSTRUCTIONS TO BIDDERS (SI)

- SI1 Integrity Provisions – Declaration of Convicted Offences
- SI2 Bid Documents
- SI3 Enquiries during the Solicitation Period
- SI4 Mandatory Site Visit
- SI5 Revision of Bid
- SI6 Bid Evaluation
- SI7 Insufficient Funding
- SI8 Bid Validity Period
- SI9 Construction Documents
- SI10 Security Related Requirements
- SI11 Web Sites

**R2710T GENERAL INSTRUCTIONS - CONSTRUCTION SERVICES -
BID SECURITY REQUIREMENTS (GI) (2015-07-03)**

The following GI's are included by reference and are available at the following Web Site
<https://buyandsell.gc.ca/policy-and-guidelines/standard-acquisition-clauses-and-conditions-manual/5/R>

- GI1 Integrity Provisions - Bid
- GI2 Completion of Bid
- GI3 Identity or Legal Capacity of the Bidder
- GI4 Applicable Taxes
- GI5 Capital Development and Redevelopment Charges
- GI6 Registry and Pre-qualification of Floating Plant
- GI7 Listing of Subcontractors and Suppliers
- GI8 Bid Security Requirements
- GI9 Submission of Bid
- GI10 Revision of Bid
- GI11 Rejection of Bid
- GI12 Bid Costs
- GI13 Procurement Business Number
- GI14 Compliance with Applicable Laws
- GI15 Approval of Alternative Materials
- GI16 Performance Evaluation
- GI17 Conflict of Interest-Unfair Advantage

SUPPLEMENTARY CONDITIONS (SC)

- SC1 Security Related Requirements
- SC2 Insurance Terms

CONTRACT DOCUMENTS (CD)

BID FORM (BF)

- BA1 Identification
- BA2 Business Name and Address of Bidder
- BA3 The Offer
- BA4 Bid Validity Period
- BA5 Acceptance and Contract
- BA6 Construction Time
- BA7 Bid Security
- BA8 Signature

APPENDIX 1 - COMBINED PRICE FORM

APPENDIX 2 - INTEGRITY PROVISIONS – LIST OF NAMES

APPENDIX 3– DEPARTMENTAL REPRESENTATIVE’S AUTHORITY

ANNEX A - STATEMENT OF WORK

ANNEX B - SCOPE OF WORK

ANNEX C - SECURITY REQUIREMENT CHECKLIST (SRCL)

ANNEX D – CERTIFICATE OF INSURANCE

ANNEX E – CONDITIONS PRECEDENT TO CONTRACT AWARD

ANNEX F – LISTING OF SUBCONTRACTORS

**INVITATION TO TENDER
IMPORTANT NOTICE TO BIDDERS**

THIS DOCUMENT CONTAINS A SECURITY REQUIREMENT

For further instructions please consult “Special Instruction to Bidders”, SI10, “Security Related Requirements” and “Supplementary Conditions” SC1 “Security Related Requirements, Document Safeguarding Location”.

SUPPORT THE USE OF APPRENTICES

Through Canada’s Economic Action Plan 2013, the Government of Canada proposes to support the employment of apprentices in federal construction and maintenance projects. Refer to SI11.

INTEGRITY PROVISIONS - BID

Important changes have been made to the Integrity Provisions - Bid as of July 3rd 2015. See GI1, Integrity Provision-Bid of R2710T of the General Instructions for more information.

SECTION I – SPECIAL INSTRUCTIONS TO BIDDERS (SI)**SI1. INTEGRITY PROVISIONS – DECLARATION OF CONVICTED OFFENCES**

As applicable, pursuant to GI1 of the Declaration of Convicted Offences, paragraph 10 (copied below) of the General Instructions R2710T, the Bidder must provide with its bid, a completed [Declaration Form](#), to be given further consideration in the procurement process.

Declaration of Convicted Offences

Where a Bidder or its Affiliate is unable to certify that it has not been convicted of any of the offences referenced under the Canadian Offences Resulting in Legal Incapacity, the Canadian Offences and the Foreign Offences subsections, the Bidder must provide with its bid the completed [Declaration Form](#), to be given further consideration in the procurement process

SI2. BID DOCUMENTS**SI2.1 The following are the bid documents:**

- a. Invitation to Tender – Cover Page;
- b. Special Instructions to Bidders;
- c. General Instructions - Construction Services R2710T (2019-05-30);
- d. Clauses & Conditions identified in “Contract Documents”;
- e. Drawings and Specifications;
- f. Bid and Acceptance Form and related Appendix(s); and
- g. Any amendment issued prior to solicitation closing

Submission of a bid constitutes acknowledgement that the Bidder has read and agrees to be bound by these documents

SI2.2 General Instructions - Construction Services - Bid Security Requirements R2710T is incorporated by reference and is set out in the Standard Acquisition Clauses and Conditions (SACC) Manual, issued by Public Works and Government Services Canada (PWGSC). The SACC Manual is available on the PWGSC Web site: <https://buyandsell.gc.ca/policy-and-guidelines/standard-acquisition-clauses-and-conditions-manual/5/R>

SI3. ENQUIRIES DURING THE SOLICITATION PERIOD

1. Enquiries regarding this bid must be submitted in writing to the Contracting Officer named on the Invitation to Tender - Page 1 as early as possible within the solicitation period. Except for the approval of alternative materials as described in GI15 of R2710T, enquiries should be received no later than five (5) calendar days prior to the date set for solicitation closing to allow sufficient time to provide a response. Enquiries received after that time may not result in an answer being provided.
2. To ensure consistency and quality of the information provided to Bidders, the Contracting Officer shall examine the content of the enquiry and shall decide whether or not to issue an amendment.
3. All enquiries and other communications related to this bid sent throughout the solicitation period are to be directed ONLY to the Contracting Officer named on the Invitation to Tender - Page 1. Failure to comply with this requirement may result in the bid being declared non-responsive.

SI4. MANDATORY SITE VISIT

There will be a site visit on *January 10, 2020 at 10:00AM*. Interested bidders are to meet at the front lobby of 775 Brookfield Road, Ottawa, Ontario.

The site visit for this project is MANDATORY. The representative of the bidder will be required to sign the Site Visit Attendance Sheet at the site visit. Bids submitted by **Bidders who have not signed the attendance sheet will not be accepted. Mandatory health and safety protection is to be worn by visitors.**

SI3. REVISION OF BID

A bid may be revised by letter or E-mail to the contracting authority in accordance with G110 of R2710T.

SI4. EVALUATION PROCEDURES

- (a) Bids will be assessed in accordance with the entire requirement of the bid solicitation including the technical and financial evaluation criteria.
- (b) An evaluation team composed of representatives of Canada will evaluate the bids.

SI5. INSUFFICIENT FUNDING

In the event that the lowest compliant bid exceeds the amount of funding allocated for the Work, Canada in its sole discretion may

- a. cancel the solicitation; or
- b. obtain additional funding and award the Contract to the Bidder submitting the lowest compliant bid; and/or negotiate a reduction in the bid price and/or scope of work of not more than 15% with the Bidder submitting the lowest compliant bid. Should an agreement satisfactory to Canada not be reached, Canada shall exercise option (a) or (b).

SI6. BID VALIDITY PERIOD

- 1. Canada reserves the right to seek an extension to the bid validity period prescribed in BA4 of the Bid and Acceptance Form. Upon notification in writing from Canada, Bidders shall have the option to either accept or reject the proposed extension.
- 2. If the extension referred to in paragraph 1 of SI8 is accepted, in writing, by all those who submitted bids, then Canada shall continue immediately with the evaluation of the bids and its approvals processes.
- 3. If the extension referred to in paragraph 1 of SI8 is not accepted in writing by all those who submitted bids then Canada shall, at its sole discretion, either
 - a. continue to evaluate the bids of those who have accepted the proposed extension and seek the necessary approvals; or
 - b. cancel the invitation to tender.
- 4. The provisions expressed herein do not in any manner limit Canada's rights in law or under G111 of R2710T.

SI7. CONSTRUCTION DOCUMENTS

Please refer to Annex B.

SI8. SECURITY RELATED REQUIREMENTS

- 1. **At bid closing, the Bidder must hold a valid Security Clearance** as indicated in section SC1 of the Supplementary Conditions. Failure to comply with this requirement will render the Bid non-compliant and no further consideration will be given to the Bid.
- 2. The Successful Bidder's personnel, as well as any subcontractor and its personnel, who are required to perform any part of the Work pursuant to the subsequent contract must meet the mandatory security requirement as indicated in section SC1 of the Supplementary Conditions. **Individuals who do not have the required level of security will not be allowed on site.** It is the responsibility of the successful bidder to ensure that the security requirements are met throughout the performance of the contract. Canada will not be held liable or accountable for any

delays or additional costs associated with the successful bidder's non-compliance with the mandatory security requirement.

3. For additional information on security requirements, bidders should consult the "Security Requirements for PWGSC Bid Solicitations - Instructions for Bidders" on the Standard Procurement Documents Web site [Industrial Security Program](#)

SI9. WEB SITES

The connection to some of the Web sites in the solicitation documents is established by the use of hyperlinks. The following is a list of the addresses of the Web sites:

Bid Bond (form PWGSC-TPSGC 504)

<http://www.tpsgc-pwgsc.gc.ca/app-acq/forms/documents/504.pdf>

Buy and Sell

<https://www.achatsetventes-buyandsell.gc.ca>

Canadian economic sanctions

<http://www.international.gc.ca/sanctions/index.aspx?lang=eng>

Construction and Consultant Services Contract Administration Forms Real Property Contracting

<http://www.tpsgc-pwgsc.gc.ca/app-acq/forms/formulaires-forms-eng.html>

Contractor Performance Evaluation Report (Form PWGSC-TPSGC 2913)

<http://www.tpsgc-pwgsc.gc.ca/app-acq/forms/documents/2913.pdf>

Declaration Form

<http://www.tpsgc-pwgsc.gc.ca/ci-if/formulaire-form-eng.html>

PWGSC, Industrial Security Services

<http://ssi-iss.tpsgc-pwgsc.gc.ca/index-eng.html>

PWGSC, Code of Conduct and Certifications

<http://www.tpsgc-pwgsc.gc.ca/app-acq/cndt-cndct/contexte-context-eng.html>

Standard Acquisition Clauses and Conditions (SACC) Manual

<https://buyandsell.gc.ca/policy-and-guidelines/standard-acquisition-clauses-and-conditions-manual/5/R>

Treasury Board Appendix L, Acceptable Bonding Companies

<http://www.tbs-sct.gc.ca/pol/doc-eng.aspx?id=14494§ion=text#appL>

SECTION II – SUPPLEMENTARY CONDITIONS (SC)**SC1. SECURITY RELATED REQUIREMENTS, DOCUMENT SAFEGUARDING**

The following security requirement (SRCL and related clauses) applies and form part of the Contract:

1. The Contractor personnel requiring access to PROTECTED information, assets or sensitive work site(s) must EACH hold a valid RELIABILITY STATUS, granted or approved by Health Canada or the Canadian Industrial Security Directorate (CISD), Public Services and Procurement Canada (PSPC).
2. The Contractor MUST NOT remove any PROTECTED information or assets from the identified work site(s), and the Contractor must ensure that its personnel are made aware of and comply with this restriction.
3. Subcontracts which contain security requirements are NOT to be awarded without the prior written permission of Health Canada.

Contractor's Site or Premises Requiring Safeguard Measures

There is no document security requirement applicable to this Contract.

SC2. INSURANCE TERMS**MINIMUM INSURANCE REQUIREMENTS:**

- Commercial General Liability
- Builder's Risk/Installation Floater

SC2.1 Insurance Contracts

The Contractor must, at the Contractor's expense, obtain and maintain insurance contracts in accordance with the requirements of the Certificate of Insurance. Coverage must be placed with an Insurer licensed to carry out business in Canada.

Compliance with the insurance requirements does not release the Contractor from or reduce its liability under the Contract. The Contractor is responsible for deciding if additional insurance coverage is necessary to fulfill its obligation under the Contract and to ensure compliance with any applicable law. Any additional insurance coverage is at the Contractor's expense, and for its own benefit and protection

SC2.2 Period of Insurance

The policies required in the Certificate of Insurance must be in force from the date of contract award and be maintained throughout the duration of the Contract.

The Contractor must be responsible to provide and maintain coverage for Products/Completed Operations hazards on its Commercial General Liability insurance policy, for a period of six (6) years beyond the date of the Certificate of Substantial Performance.

SC2.3 Proof of Insurance

Before commencement of the Work, and no later than thirty (30) days after acceptance of its bid, the Contractor must deposit with Canada a Certificate of Insurance on the form attached herein.

Upon request by Canada, the Contractor must provide originals or certified true copies of all contracts of insurance maintained by the Contractor pursuant to the Certificate of Insurance.

SC2.4 Insurance Proceeds

In the event of a claim, the Contractor must, without delay, do such things and execute such documents as are necessary to effect payment of the proceeds.

SC2.5 Deductible

The payment of monies up to the deductible amount made in satisfaction of a claim must be borne by the Contractor.

SECTION III – CONTRACT DOCUMENTS (CD)

1. The following are the contract documents:
 - a. Contract Cover Page when signed by Canada;
 - b. Duly completed Bid and Acceptance Form and any Appendices attached thereto;
 - c. Drawings and Specifications;
 - d. SACC Clause 2010C (2018-06-21) General Conditions – Medium Complexity Services
 - e. General Conditions and clauses

GC1	General Provisions – Construction Services	R2810D	(2017-11-28);
GC2	Administration of the Contract	R2820D	(2016-01-28);
GC3	Execution and Control of the Work	R2830D	(2018-06-21);
GC4	Protective Measures	R2840D	(2008-05-12);
GC5	Terms of Payment	R2850D	(2019-11-28);
GC6	Delays and Changes in the Work	R2860D	(2019-05-30);
GC7	Default, Suspension or Termination of Contract	R2870D	(2018-06-21);
GC8	Dispute Resolution	R2880D	(2019-11-28);
GC9	Contract Security	R2890D	(2018-06-21);
GC10	Insurance	R2900D	(2008-05-12);
	Allowable Costs for Contract Changes Under GC6.4.1	R2950D	(2015-02-25);
	Electrical Equipment	B1501C	(2018-06-21)

Supplementary Conditions

 - a. Any amendment issued or any allowable bid revision received before the date and time set for solicitation closing;
 - b. Any amendment incorporated by mutual agreement between Canada and the Contractor before acceptance of the bid; and
 - c. Any amendment or variation of the contract documents that is made in accordance with the General Conditions.
2. The documents identified by title, number and date above are incorporated by reference and are set out in the Standard Acquisition Clauses and Conditions (SACC) Manual, issued by Public Works and Government Services Canada (PWGSC). The SACC Manual is available on the PWGSC Web site: <https://buyandsell.gc.ca/policy-and-guidelines/standard-acquisition-clauses-and-conditions-manual>
3. The language of the contract documents is the language of the Bid and Acceptance Form submitted.

SECTION IV – BID FORM (BF)

BF1. IDENTIFICATION

PR 1000218011
Radiation Protection Building
775 Brookfield Road, Ottawa, Ontario at Confederation Heights
New Generator Tap Box and supply temporary generator power

BF2. BUSINESS NAME AND ADDRESS OF BIDDER

Name: _____

Address: _____

Telephone: _____ Fax: _____

PBN: _____

**BF3. THE OFFER
COMBINED PRICE CONTRACTS (WITH UNIT PRICES)**

The Bidder offers to Canada to perform and complete the Work for the above named project in accordance with the Bid Documents for the **total bid amount indicated in appendix 1.**

BF4. BID VALIDITY PERIOD

The bid shall not be withdrawn for a period of (*sixty*) 60 days following the date of solicitation closing.

BF5. ACCEPTANCE AND CONTRACT

Upon acceptance of the Contractor's offer by Canada, a binding Contract shall be formed between Canada and the Contractor. The documents forming the Contract shall be the contract documents identified in Contract Documents (CD).

BF6. CONSTRUCTION TIME

The Contractor shall perform and complete the Work before March 31, 2020.

BF7. BID SECURITY

The Bidder is enclosing bid security with its bid in accordance with GI8 - Bid Security Requirements of R2710T - General Instructions - Construction Services - Bid Security Requirements.

BF8. SIGNATURE

Name and title of person authorized to sign on behalf of Bidder (Type or print)

Name

Title

Signature

Date

APPENDIX 1

COMBINED PRICE FORM (1 PAGE)

1. The prices per unit shall govern in establishing the Total Extended Amount. Any arithmetical errors in this Appendix will be corrected by Canada.
2. Canada may reject the bid if any of the prices submitted do not reasonably reflect the cost of performing the part of the work to which that price applies.

LUMP SUM

The Lump Sum Amount designates Work to which a Lump Sum Arrangement applies.

- (a) Work included in the Lump Sum Amount represents all work not included in the unit price table.

LUMP SUM AMOUNT (LSA) Excluding applicable tax(s)

UNIT PRICE TABLE

The Unit Price Table designates Work to which a Unit Price Arrangement applies.

- (a) Work included in each item is as described in the referenced specification section.
- (b) The Price per Unit shall not include any amounts for Work that is not included in that unit price item.

Item	Specification Reference	Class of Labour, Plant or Material	Unit of Measurement	Estimated Quantity (EQ)	Price per Unit applicable tax(s) extra (PU)	Extended amount (EQ x PU) applicable tax(s) extra
1		Regular Hours				
2		Outside Regular Hours				
3						
4						
5						
6						
7						
8						
9						
TOTAL EXTENDED AMOUNT (TEA) Excluding applicable tax(s)						
TOTAL BID AMOUNT (LSA +TEA) Excluding applicable tax(s)						

APPENDIX 3

DEPARTMENTAL REPRESENTATIVE'S AUTHORITY

CONTRACTING AUTHORITY:

Name : Diana Seguin
Title : Senior Procurement and Contracting Officer
Department: Health Canada
Division : Financial Operations Division
Telephone : 613-941-2103
e-mail : diana.seguin@canada.ca

TECHNICAL AUTHORITY:

To be completed and provided to the contractor at time of contract award.

Name : _____
Title : _____
Department: _____
Division : _____
Telephone : ____ - ____ - _____
e-mail : _____

ANNEX A – STATEMENT OF WORK

Radiation Protection Building- New Generator Tap Box and supply temporary generator power

1.0 Scope

1.1 Introduction

To provide labour, materials and equipment to install a new generator tap box at the building loading dock and to provide back up generator power for another project involving new switchboard breakers and transfer control scheme as per the attached scope of work prepared by Morrison Hershfield seen as Annex B.

1.2 Objectives of the Requirement

The objective of this requirement is for the successful contractor to provide and supply all tools, equipment, labour, and all materials required to complete the scope of work identified in 3.1 (Tasks, Activities, Deliverables, and/or Milestones).

1.3 Background and Specific Scope of Work

Health Canada has been experiencing many power outages and recently completed an electrical shutdown, investigation and report. The resulting work, from this report, has been identified in section 2.1 below.

2.0 Requirements

2.1 Tasks, Activities, Deliverable and/or Milestones

Provide all labour, materials and equipment to undertake the necessary electrical works based on the attached scope of work prepared by Morrison Hershfield seen as Annex B. Should there be any discrepancies between this scope of work and Annex B, Annex B will prevail.

2.2 Specifications and Standards

The contractor must ensure all work is performed in accordance with all applicable codes, standards, regulations and manufacturer's recommendations, the Electrical Safety Authority of Ontario (ESA) and the Ontario Electrical Code. The Contractor must provide an ESA permit before any work begins.

Materials must be new and work must conform to the minimum standards of the Canadian General Standards Board, the Canadian Standards Association, the National Building Code of Canada 2015 (NBC) the National Fire Code 2015 (NFC) and all applicable, federal, provincial and municipal codes, laws and by-laws, and to all standards mentioned herein.

Work must be carried out using a Contractor who holds a valid licence issued by the Province in which the work is being contracted.

Taking all necessary steps to protect the workers from harm in accordance with revised statues of the current Labour Canada and Electrical Safety codes. The Contractor, its employees, all sub-contractors and all site visitors must have the appropriate personal safety equipment (PPE) and training prior to performing the work required.

2.3 Technical, Operational and Organizational Environment

Access to the site will be coordinated and scheduled through the Project Manager.

2.4 Method and Source of Payment

The work will be monitored and accepted by the Project Manager.

2.5 Reporting Requirements

All communications and submissions by the Contractor will be coordinated through the Project Manager.

2.6 Project Management Control Procedures

The Project Manager will oversee the work to ensure it is delivered on time and internal approvals required for Health Canada are addressed in a timely manner.

Any change in the Scope of Work will require approval by the Project Manager prior to any work beginning and will require approval and an amendment to the contract by the Contract Authority.

3.0 Additional Information

3.1 Canada's Obligations

Health Canada will coordinate site access availability for information gathering and construction. Health Canada will be on site or available during the entirety of this project.

Health Canada may, at any time, verbally suspend the work in whole or part. If required, within 24 hours of the suspension, the Project Manager must provide the Contractor with a written notification indicating the effective date and time of suspension, the intended duration, and reason for the suspension (e.g. non-compliance of Health and Safety regulations and/or encountering unexpected contamination)

3.2 Contractor's Obligations

The Contractor will be responsible for the following:

- 1 Carrying-out services in accordance with approved documents and directions given by the Project Manager.
- 2 Directing all correspondence to the Project Manager and not communicating with the client directly.
- 3 Advising the Project Manager of any changes that may affect the approvals previously given and detailing the extent of and reason for the changes and obtain written approvals before proceeding.
- 4 Ensuring all activities performed provide for the protection of Health Canada and Safety of the facility's occupants, not disturbing the facility's security systems and procedures and not disturbing the operations performed in and around the facility.
- 5 All their own transportation and parking costs during the entire project life cycle. Paid visitor parking is available at the Tunney's Pasture locations.
- 6 Tracking and completing all contract deliverables/tasks.
- 7 Ensuring that work is carried out using only qualified licenced certified workers or apprentices in accordance with Provincial and/or Territorial Act respecting manpower vocational training and qualification. Permit employees registered in Provincial, Territorial apprentices program to perform specific tasks only if under direct supervision of qualified licenced workers. Determine permitted activities and tasks by apprentices based on level of training attended and demonstration of ability to perform specific duties.
- 8 Assuming responsibility of any accident or damage caused by its employees and/or equipment to Health Canada property or personnel as a result of the Contractor's activities.
- 9 Assuming responsibility for the security of its equipment and materials during and after working hours. Health Canada will not be liable for any vandalism, theft, or loss.
- 10 Notifying the Project Manager of any on-site activity and obtaining approval to gain access to the building 48 hours before entering on site.

3.3 Location of Work, Work Site and Delivery Point

The work is to be conducted at the Radiation Protection Building (RPB) 775 Brookfield Road, Ottawa, Ontario.

3.4 Language of Work

All work can be conducted in either official language.

4.0 Project Schedule- Expected Start and Completion Dates

The work is to be completed no later than March 31st, 2020 and must be performed during work hours where possible and after regular working hours Monday to Friday from 18:00 to 06:00 and/or on weekends. When it is necessary to shut down the system, or when entry into laboratory space is required,

arrangements must be made with the Project Manager in advance. Shutdowns take approximately 3 weeks from receipt of the schedule until the shutdown/works can be completed. Details must be provided as to what portion of the system will be out of service and the duration of the outage.

5.0 Applicable Documents

5.1 Applicable Websites

Insurance Terms (Real Property Contracting 5.R)

<https://buyandsell.gc.ca/policy-and-guidelines/standard-acquisition-clauses-and-conditions-manual>

Certificate of Insurance (form PWGSC-TPSGC 357)

<http://www.tpsgc-pwgsc.gc.ca/app-acq/forms/documents/357.pdf>

SACC Manual

<https://buyandsell.gc.ca/policy-and-guidelines/standard-acquisition-clauses-and-conditions-manual>

6.0 Authorities

For the purpose of this work the following individuals will respect Health Canada Departmental Representative:

6.1 Project Management

TO BE CONFIRMED

6.2 Contracting Authority

Diana Seguin

Senior Procurement and Contracting Officer

613-941-2103

Diana.seguin@canada.ca

6.3 Technical Authority

TO BE CONFIRMED

The Technical Authority is responsible for all matters concerning the technical content of the work required under this contract. Any changes to the scope of work must be discussed with the Project Manager, but any resulting change can only be confirmed by the issuance of an official amendment to these Articles of Agreement issued by the Contracting Authority, as the case may be. All work will be verified by the Project Manager and Technical Authority to inspect and approve work, to ensure all work is in accordance with all applicable codes

6.4 The Administrative Authority

For any matters concerning the administration and invoicing related to this requirement contact:

TO BE CONFIRMED

7.0 Security Requirements

The contractor's employees or sub-contractors are required to have enhanced reliability security status at the time of submitting bids. All contractor or sub-contractor personnel on site require Reliability security status.

9.0 Fire Safety

The Contractor must:

- 1 Comply with both the National Building Code of Canada 2015 (NBC) and the National Fire Code of Canada 2015 (NFC) for safety of persons in buildings in the event of a fire and the protection of persons in buildings in the event of a fire and the protection of buildings from the effects of fire, as follows:

- 1.1 The National Building Code (NBC):

- 1.2 The National Fire Code (NFC) for fire safety and fire protection features that are required to be incorporated in a building during construction.
- 1.3 The on-going maintenance and use of the fire safety and fire protection features incorporated in buildings
- 1.4 The conduct of activities that might cause fire hazards in and around buildings
- 1.5 Limitations on hazardous contents in and around buildings
- 1.6 The establishment of fire safety plans
- 1.7 Fire safety at construction and demolition sites

2. Welding and cutting:

2.1 Before welding, soldering, grinding and/or cutting work, obtain a permit from the Technical Authority. Hot work must not be undertaken unless authorized by the Technical Authority.

10.0 Environmental Protection

The Contractor must conform to all of the following legislation where applicable.

- 1. Federal Legislation
 - a. Canada Labour Code, Part II, Sections 124 and 125
 - i. Canada Occupational Health and Safety Regulations
 - b. Canadian Environmental Protection Act, 1999 (CEPA, 1999)
 - i. Storage Tank Systems for Petroleum Products and Allied Petroleum Products Regulations (SOR/2008-197)
 - 1. Canadian Council of Minister of the Environment (CCME) Environmental Code of Practice for Aboveground and Underground Storage Tank Systems Containing Petroleum and Allied Petroleum Products
 - 2. National Fire Code of Canada (NFCC)
 - 3. CAN/CSA B139 Installation Code for Oil-Burning Equipment
 - ii. PCB Regulations (SOR/2008-273)**
 - c. Hazardous Product Act, 1985
 - d. Hazardous Materials Information Review Act, 1985
 - e. Fisheries Act, 1985
 - f. Transportation of Dangerous Goods Act, 1992 (TDGA)
- 2. Provincial Legislation
 - a. Ontario Occupational Health and Safety Act
 - i. O.Reg. 490/09: Designated Substances
 - b. Technical Standards and Safety Act, 2000
 - i. O.Reg. 213/01: Fuel Oil
 - ii. O.Reg. 215/01: Fuel Industry Certificates
 - iii. O.Reg. 216/01: Certification of Petroleum Mechanics
 - c. Ontario Environmental Protection Act
 - i. O.Reg. 347/09: General – Waste Management
 - ii. O.Reg. 362/90: Waste Management – PCB**
 - d. Fire Protection and Prevention Act
 - i. O.Reg. 213/07: Fire Code
- 3. Municipal Legislation
 - a. Sewer Use (By-law No. 2003-514)

11.0 Site Safety

The Contractor is to provide to the Departmental Representative, a company Safe Work Procedure and a Safe Work Practice including daily Tool Box Safety Meetings. A safety plan may be required by the Departmental Representative.

12.0 Required Resources

The Contractor is to provide a list of all required resources proposed to do the work.

13.0 Subcontracting

- 1 Neither the whole nor any part of the work may be subcontracted by the Contractor without the written consent of the Departmental Representative.
- 2 The Contractor must notify the Departmental Representative in writing of the Contractor's intention to subcontract.
- 3 The Contractor must notify the Departmental Representative in writing identifying the part of the work, and the subcontractor with whom it is intended to subcontract.
- 4 If the Departmental Representative objects to a subcontracting pursuant, the contractor must not enter into the intended subcontracting.
- 5 Neither a subcontracting nor the Departmental Representative's consent to a subcontracting by the Contractor must be construed to relieve the Contractor from any obligation under the contract or to impose any liability upon the Government of Canada.
- 6 Should the Departmental Representative consent to the subcontractor, all submittal requirements in this contract must apply. Submittals must be made for review by the Departmental Representative prior to the subcontractor being permitted to enter the construction site.

ANNEX B
SCOPE OF WORK

Refer to following 8 pages

HEALTH CANADA - NEW TEMPORARY GENERATOR TAP BOX CONNECTION



DRAWING INDEX	
1	E-1-P2 COVER PAGE & DRAWING LIST
2	E-2-P2 ELECTRICAL SPECIFICATIONS & LEGEND
3	E-3-P2 SINGLE LINE DIAGRAMS - DEMOLITION & NEW WORK
4	E-4-P2 LAYOUTS - PENITHOUSE - DEMOLITION & NEW WORK
5	E-5-P2 LAYOUTS - FLOOR 2 & 3 - NEW WORK
6	E-6-P2 LAYOUTS - FLOOR 1 - CRITICAL EQUIPMENT
7	E-7-P2 LAYOUTS - FLOOR 1 - CRITICAL EQUIPMENT
8	E-8-P2 ELECTRICAL DETAILS

SHEET TITLE:	
RADIATION PROTECTION BUILDING COVER PAGE & DRAWING INDEX	

DO NOT SCALE DRAWINGS. CONTRACTOR MUST VERIFY ALL DIMENSIONS AND ADVISE CONSULTANTS OF ANY ERRORS OR OMISSIONS. NO VARIATIONS OR WRITTEN APPROVAL. ALL PREVIOUS ISSUES OF THIS DRAWING ARE SUPERSEDED BY THE LATEST REVISION. ALL DRAWINGS AND SPECIFICATIONS REMAIN THE PROPERTY OF MORRISON HERSHFIELD LIMITED.

REV	DESCRIPTION	DATE	BY
1	ISSUED FOR 75% CLIENT REVIEW	2019.11.28	WJS
2	ISSUED FOR TENDER	2019.12.09	WJS
3	ISSUED FOR TENDER - REV. 1	2019.12.11	WJS
4	ISSUED FOR TENDER - REV. 2	2019.12.23	WJS

CONSULTANT:

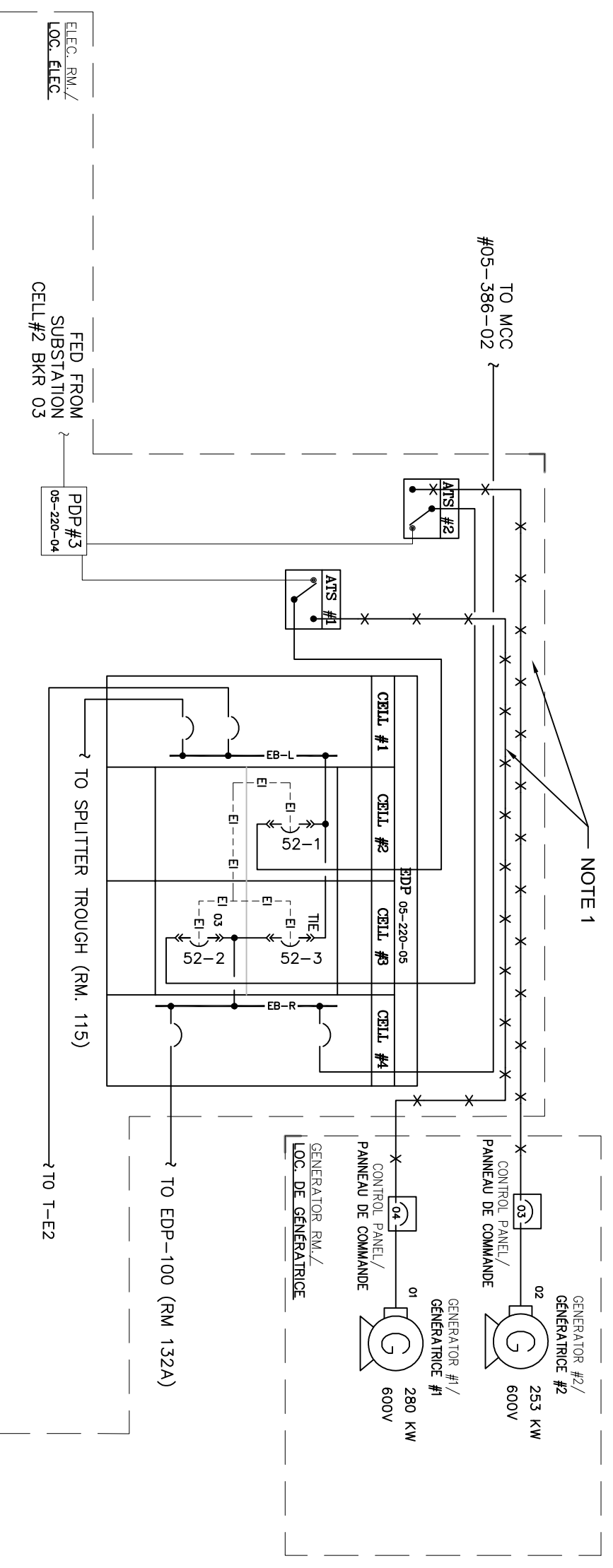
 200-2932 Baseline Road
 Ottawa, ON K2H 1B1
 Tel: (613) 739-2910 Fax: (613) 739-4926

HEALTH CANADA PROJECT MANAGER: MICHAEL HAERKENS
 MORRISON HERSHFIELD PROJECT MANAGER: Wm. JEFF SIDDALL

DESIGNED BY:	PW	CHECKED BY:	KS
DATE:	2019.11.22	DWG FILE:	
SCALE:	NTS	DRAWING NO.:	E-1-P2
PROJECT NO.:	1904432.00		

PROJECT DESCRIPTION:	1	2	3	4	5	6
<p>1. TO MODIFY THE EXISTING EMERGENCY POWER SYSTEM TO ACCOMMODATE A TEMPORARY POWER FOR CRITICAL LOADS DURING CONSTRUCTION OF THIS PROJECT AND THE NEW SWITCHBOARD BREAKERS AND TRANSFER CONTROL SCHEME PROJECT FOR THE EXISTING STANDBY POWER SWITCHBOARD.</p> <p>2. MODIFICATIONS INCLUDE INSTALLING A TAP BOX, COMPLETE WITH SWITCH CONTROLS, AT GROUND LEVEL, THAT WILL SUPPLY A NEW SPLITTER THROUGH IN THE PENITHOUSE DIESEL ROOM. TWO NEW MANUAL TRANSFER SWITCHES (M/S) WILL ALSO BE INSTALLED IN THE DIESEL ROOM.</p> <p>3. THE TWO NEW M/S'S WILL BE SUPPLIED FROM THE SPLITTER ON THEIR EMERGENCY SIDE AND FROM ONE OF THE TWO EXISTING AUTOMATIC TRANSFER SWITCHES - ATISH AND ATSEZ IN THE PENITHOUSE ELECTRICAL ROOM WILL BE CONNECTED TO THE LOAD SIDE OF ONE OF THE M/S'S.</p> <p>4. EACH EXISTING ATS WILL HAVE A NEW SELECTOR SWITCH ADDED THAT WILL TEMPORARY GENERATOR.</p> <p>5. TEMPORARY POWER IS TO BE SUPPLIED TO IDENTIFIED CRITICAL EQUIPMENT DURING THE PROJECT WORK AND THE CONCURRENT PROJECT TO UPGRADE THE STANDBY POWER SWITCHBOARD.</p>	<p>1. TAP BOX</p> <p>1.1. OUTDOOR WEATHER PROOF TEMPORARY GENERATOR CONNECTION TAP BOX, STANDARD OF ACCEPTANCE:</p> <p>1.1.1. STA BOXES INC.</p> <p>1.1.2. R90 CONTROL SOLUTIONS</p> <p>1.1.3. OR APPROVED EQUAL</p> <p>1.2. CABLE LOCK: 600/247VAC, 3-POLE, 400A, 3-PHASE, 3-WIRE + GROUND C/W 1. X8U14 TERMINAL BLOCK IN SEPARATE CONTROL COMPARTMENT.</p> <p>1.3. HALE RECEPTACLE: 600V, 3-PHASE AND ONE GROUND C/W, 3-POLE STYLE INSTALLED IN ENCLOSURE AND CONNECTED DIRECTLY TO BUS BAR.</p> <p>1.4. GROUND CABLE LOCK RECEPTACLES TO BE BONDED TO ENCLOSURE WELDED MOUNTING TABS.</p> <p>1.5. ENCLOSURE TO BE GALVANIZED STEEL, NEMA TYPE 3R, WALL-MOUNT WITH PAD-LOCKABLE WING KNOB LATCH.</p> <p>1.6. ENCLOSURE SHALL HAVE A HINGED FRONT ACCESS DOOR WITH EXECUTION</p>	<p>2.1. GENERATOR TAP BOX SHALL BE INSTALLED AS SHOWN ON THE DRAWINGS AND PER THE MANUFACTURER'S WRITTEN INSTRUCTIONS. IN ADDITION, THE INSTALLATION SHALL MEET THE REQUIREMENTS OF LOCAL CODES.</p> <p>2.2. PRIOR TO INSTALLATION OF TAP BOX, CONTRACTOR SHALL EXAMINE THE AREAS AND CONDITIONS UNDER WHICH THE TAP BOX IS TO BE INSTALLED AND NOTIFY THE ENGINEER IN WRITING IF UNSATISFACTORY CONDITIONS EXIST.</p> <p>2.3. CONDUIT ENTRY INTO THE TAP BOX SHALL BE BY CONTRACTOR.</p> <p>2.4. CONTRACTOR TO FURNISH AND INSTALL LISTED WATER-TIGHT CONDUIT HUBS. THE HUB SIZE SHALL MATCH THE CONDUIT SIZE FOR CONDUCTORS AND GROUND AS SHOWN ON THE DRAWINGS. HUBS SHALL BE PROPERLY INSTALLED AND TIGHTENED TO MAINTAIN THE TYPE SR INTEGRITY OF THE TAP BOX.</p> <p>2.5. CONTRACTOR SHALL TERMINATE CONDUCTORS AND GROUND PER THE MANUFACTURER'S INSTRUCTIONS. USE COPPER WIRE ONLY FOR ALL CONDUCTORS AND GROUNDS. ALL FIELD WIRING TERMINATIONS IN THE TAP BOX SHALL BE TORQUED AS REQUIRED PER THE INSTRUCTIONS ON THE TAP BOX.</p>	<p>3.1. PROVIDE ONE SET OF TEMPORARY GENERATOR CONNECTION CABLES AS FOLLOWS:</p> <p>3.1.1. SINGLE 400A PER PHASE INCLUDING SEPARATE INSULATED GREEN BONDING CONDUCTOR.</p> <p>3.1.2. CABLES TO BE 10 M LONG.</p> <p>3.1.3. EXTRA FLEXIBLE TO -40 CELSIUS COPPER STRANDED, INSULATION TO 1000 V.</p> <p>3.1.4. ONE END FITTED WITH FEMALE CABLE LOCK FITTINGS TO MATCH TAP BOX. THE OTHER ENDS ARE UNFINISHED.</p> <p>3.1.5. PROVIDE STORAGE HOOK MOUNTED ON WALL IN GENERATOR ROOM TO HANG CABLES.</p>	<p>4.1. BUILDING WIRE</p> <p>4.1.1. CONDUCTOR MATERIAL (WIRE IN CONDUIT) - ANNEALED COMMERCIAL GRADE, 98% CONDUCTIVITY, COPPER, NO. 14 TO NO. 10 AWG - SOLID; NO. 8 AND LARGER - STRANDED.</p> <p>4.1.2. 600V, UNLESS OTHERWISE NOTED, PROVIDE 600V RATED FOR 347/600V AND 120/208/208V WIRING, SIZES NO.12 AND NO.10 AWG.</p> <p>4.1.3. RUND0, NO.8 AND LARGER, 1000V RATED FOR 347/600V AND 120/208V WIRING.</p> <p>4.1.4. SMALLEST CONDUCTOR SIZE ALLOWED NO.12 AWG UNLESS OTHERWISE SPECIFIED.</p>	<p>5.1. BUILDING WIRE</p> <p>5.1.1. CONDUCTOR MATERIAL (WIRE IN CONDUIT) - ANNEALED COMMERCIAL GRADE, 98% CONDUCTIVITY, COPPER, NO. 14 TO NO. 10 AWG - SOLID; NO. 8 AND LARGER - STRANDED.</p> <p>5.1.2. 600V, UNLESS OTHERWISE NOTED, PROVIDE 600V RATED FOR 347/600V AND 120/208/208V WIRING, SIZES NO.12 AND NO.10 AWG.</p> <p>5.1.3. RUND0, NO.8 AND LARGER, 1000V RATED FOR 347/600V AND 120/208V WIRING.</p> <p>5.1.4. SMALLEST CONDUCTOR SIZE ALLOWED NO.12 AWG UNLESS OTHERWISE SPECIFIED.</p>	<p>6.1. BUILDING WIRE</p> <p>6.1.1. CONDUCTOR MATERIAL (WIRE IN CONDUIT) - ANNEALED COMMERCIAL GRADE, 98% CONDUCTIVITY, COPPER, NO. 14 TO NO. 10 AWG - SOLID; NO. 8 AND LARGER - STRANDED.</p> <p>6.1.2. 600V, UNLESS OTHERWISE NOTED, PROVIDE 600V RATED FOR 347/600V AND 120/208/208V WIRING, SIZES NO.12 AND NO.10 AWG.</p> <p>6.1.3. RUND0, NO.8 AND LARGER, 1000V RATED FOR 347/600V AND 120/208V WIRING.</p> <p>6.1.4. SMALLEST CONDUCTOR SIZE ALLOWED NO.12 AWG UNLESS OTHERWISE SPECIFIED.</p>
<p>1. EXCEPT WHERE SPECIFIED OTHERWISE, COMPLETE INSTALLATION IN ACCORDANCE WITH THE FOLLOWING: NATIONAL APPLICABLE CODE, ONTARIO ELECTRICAL SAFETY CODE, AMENDMENTS AND APPLICABLE LOCAL REGULATIONS C/W INSPECTION CERTIFICATE.</p> <p>2. ALL EQUIPMENT IS TO BE CSA APPROVED OR EQUIVALENT.</p> <p>3. SUBMIT ALL PLANS REQUIRED BY THE INSPECTION AUTHORITY, FOR APPROVAL. FURNISH INSPECTION CERTIFICATE, PRIOR TO FINAL PAYMENT, TO SHOW INSTALLED WORK CONFORMS TO ALL SPECIFICATIONS AND REGULATIONS. PAY ALL FEES AND PERMIT COSTS.</p> <p>4. SUBMIT PDF'S OF SHOP DRAWINGS TO THE ENGINEER FOR APPROVAL. PROVIDE SHOP DRAWINGS OF ALL EQUIPMENT AND DEVICES, TRANSFER SCHEME CONTROL, WIRING DIAGRAM WITH CONDUCTOR NUMBERS, SIZES, FUSE SIZES, ETC. IS REQUIRED.</p> <p>5. UPON COMPLETION OF WORK, PROVIDE MARKUP PRINTS DESCRIBING AS-BUILT CONDITIONS AND 3 COPIES OF MAINTENANCE MANUALS.</p> <p>6. PROVIDE A 1-YEAR WARRANTY FOR THE EQUIPMENT, SYSTEMS AND THEIR INSTALLATION.</p>	<p>7.1. DOUBLE THROW, NON-FUSIBLE SWITCH WITH THE FOLLOWING:</p> <p>7.1.1. 400A, 3P/600V, 3-POLE, 3-PHASE + GROUND.</p> <p>7.1.2. 100% LOAD BREAK AND LOAD MAKE RATED.</p> <p>7.1.3. ENCLOSURE TYPE 12, STAINLESS STEEL.</p> <p>7.1.4. HANDLE AND DOOR INTERLOCKED TO KEEP DOOR CLOSED WHEN SWITCH IS ON AND HOLD THE HANDLE OFF WHEN THE DOORS OPEN.</p> <p>7.1.5. PROVISION FOR PAD-LOCKING IN "OFF" POSITION WITH 3 LOCKS.</p>	<p>8.1. DOUBLE THROW, NON-FUSIBLE SWITCH WITH THE FOLLOWING:</p> <p>8.1.1. 400A, 3P/600V, 3-POLE, 3-PHASE + GROUND.</p> <p>8.1.2. 100% LOAD BREAK AND LOAD MAKE RATED.</p> <p>8.1.3. ENCLOSURE TYPE 12, STAINLESS STEEL.</p> <p>8.1.4. HANDLE AND DOOR INTERLOCKED TO KEEP DOOR CLOSED WHEN SWITCH IS ON AND HOLD THE HANDLE OFF WHEN THE DOORS OPEN.</p> <p>8.1.5. PROVISION FOR PAD-LOCKING IN "OFF" POSITION WITH 3 LOCKS.</p>	<p>9.1. DOUBLE THROW, NON-FUSIBLE SWITCH WITH THE FOLLOWING:</p> <p>9.1.1. 400A, 3P/600V, 3-POLE, 3-PHASE + GROUND.</p> <p>9.1.2. 100% LOAD BREAK AND LOAD MAKE RATED.</p> <p>9.1.3. ENCLOSURE TYPE 12, STAINLESS STEEL.</p> <p>9.1.4. HANDLE AND DOOR INTERLOCKED TO KEEP DOOR CLOSED WHEN SWITCH IS ON AND HOLD THE HANDLE OFF WHEN THE DOORS OPEN.</p> <p>9.1.5. PROVISION FOR PAD-LOCKING IN "OFF" POSITION WITH 3 LOCKS.</p>	<p>10.1. DOUBLE THROW, NON-FUSIBLE SWITCH WITH THE FOLLOWING:</p> <p>10.1.1. 400A, 3P/600V, 3-POLE, 3-PHASE + GROUND.</p> <p>10.1.2. 100% LOAD BREAK AND LOAD MAKE RATED.</p> <p>10.1.3. ENCLOSURE TYPE 12, STAINLESS STEEL.</p> <p>10.1.4. HANDLE AND DOOR INTERLOCKED TO KEEP DOOR CLOSED WHEN SWITCH IS ON AND HOLD THE HANDLE OFF WHEN THE DOORS OPEN.</p> <p>10.1.5. PROVISION FOR PAD-LOCKING IN "OFF" POSITION WITH 3 LOCKS.</p>	<p>11.1. DOUBLE THROW, NON-FUSIBLE SWITCH WITH THE FOLLOWING:</p> <p>11.1.1. 400A, 3P/600V, 3-POLE, 3-PHASE + GROUND.</p> <p>11.1.2. 100% LOAD BREAK AND LOAD MAKE RATED.</p> <p>11.1.3. ENCLOSURE TYPE 12, STAINLESS STEEL.</p> <p>11.1.4. HANDLE AND DOOR INTERLOCKED TO KEEP DOOR CLOSED WHEN SWITCH IS ON AND HOLD THE HANDLE OFF WHEN THE DOORS OPEN.</p> <p>11.1.5. PROVISION FOR PAD-LOCKING IN "OFF" POSITION WITH 3 LOCKS.</p>	
<p>1. REMOVE AND DISPOSE OF THE EXISTING CONDUIT AND CONDUCTORS (THIS INCLUDES ASSOCIATED HANGERS AND SUPPORTS) SHOWN FOR DEMOLITION IN THE DRAWINGS WHILE PRESERVING THE GENERATOR CONTROL PANELS AND AT'SS.</p> <p>2. ALL DEMOLISHED MATERIALS ARE TO BE RECYCLED/DISPOSED OF AND REMOVED FROM SITE.</p> <p>3. IDENTIFICATION</p> <p>1.1. NAMEPLATES: LAMACOID 3 MM THICK PLASTIC ENGRAVING SHEET, MATT WHITE FINISH FACE, BLACK CORE, LETTERING ACCURATELY ALIGNED AND ENGRAVED INTO CORE MECHANICALLY. LAMACOID TO BE ATTACHED WITH SELF TAPPING SCREWS.</p> <p>2. LABELS: EMBOSSED PLASTIC LABELS WITH 6 MM HIGH LETTERS UNLESS SPECIFIED OTHERWISE.</p> <p>3. WIRING ON NAMEPLATES TO BE APPROVED BY OWNER'S REPRESENTATIVE PRIOR TO MANUFACTURE.</p> <p>4. ALLOW FOR MINIMUM OF TWENTY-FIVE (25) LETTERS PER NAMEPLATE.</p> <p>5. NAMEPLATES FOR TERMINAL CABINETS AND JUNCTION BOXES TO INDICATE SYSTEM AND/OR VOLTAGE CHARACTERISTICS.</p> <p>6. IDENTIFY EQUIPMENT WITH NAMEPLATES ENGRAVED ASSET INVENTORY NO. [] OR AS DIRECTED BY OWNER'S REPRESENTATIVE.</p> <p>7. IDENTIFY SOURCE, VOLTAGE AND LOAD ON ALL JUNCTION BOXES. USE OF INDELEBIL MARKER FOR THESE LOCATIONS IS ACCEPTABLE.</p> <p>8. ALL CONDUCTORS TO BE COLOUR CODED IN ACCORDANCE WITH CSA 22.1 -SECTION 4. 038 AND EXISTING BUILDING WIRE COLOUR CODE SYSTEM</p>	<p>1.1.1. 400A, 600V, 3-PHASE + GROUND.</p> <p>1.2. CONSTRUCTION SHEET METAL ENCLOSURE, WELDED CORNERS AND FORMED HINGED COVER SUITABLE FOR LOCKING IN CLOSED POSITION.</p> <p>1.3. TERMINATIONS: MAIN AND BRANCH LUGS AND CONNECTION BLOCKS TO MATCH REQUIRED SIZE AND NUMBER OF INCOMING AND OUTGOING CONDUCTORS AS INDICATED.</p> <p>1.4. SPARE TERMINALS, MINIMUM OF THREE SPARE TERMINALS OR LUGS ON EACH CONNECTION OR LUG BLOCK, SIZED LESS THAN 200A.</p>	<p>2.1.1. 400A, 600V, 3-PHASE + GROUND.</p> <p>2.2. CONSTRUCTION SHEET METAL ENCLOSURE, WELDED CORNERS AND FORMED HINGED COVER SUITABLE FOR LOCKING IN CLOSED POSITION.</p> <p>2.3. TERMINATIONS: MAIN AND BRANCH LUGS AND CONNECTION BLOCKS TO MATCH REQUIRED SIZE AND NUMBER OF INCOMING AND OUTGOING CONDUCTORS AS INDICATED.</p> <p>2.4. SPARE TERMINALS, MINIMUM OF THREE SPARE TERMINALS OR LUGS ON EACH CONNECTION OR LUG BLOCK, SIZED LESS THAN 200A.</p>	<p>3.1.1. 400A, 600V, 3-PHASE + GROUND.</p> <p>3.2. CONSTRUCTION SHEET METAL ENCLOSURE, WELDED CORNERS AND FORMED HINGED COVER SUITABLE FOR LOCKING IN CLOSED POSITION.</p> <p>3.3. TERMINATIONS: MAIN AND BRANCH LUGS AND CONNECTION BLOCKS TO MATCH REQUIRED SIZE AND NUMBER OF INCOMING AND OUTGOING CONDUCTORS AS INDICATED.</p> <p>3.4. SPARE TERMINALS, MINIMUM OF THREE SPARE TERMINALS OR LUGS ON EACH CONNECTION OR LUG BLOCK, SIZED LESS THAN 200A.</p>	<p>4.1.1. 400A, 600V, 3-PHASE + GROUND.</p> <p>4.2. CONSTRUCTION SHEET METAL ENCLOSURE, WELDED CORNERS AND FORMED HINGED COVER SUITABLE FOR LOCKING IN CLOSED POSITION.</p> <p>4.3. TERMINATIONS: MAIN AND BRANCH LUGS AND CONNECTION BLOCKS TO MATCH REQUIRED SIZE AND NUMBER OF INCOMING AND OUTGOING CONDUCTORS AS INDICATED.</p> <p>4.4. SPARE TERMINALS, MINIMUM OF THREE SPARE TERMINALS OR LUGS ON EACH CONNECTION OR LUG BLOCK, SIZED LESS THAN 200A.</p>	<p>5.1.1. 400A, 600V, 3-PHASE + GROUND.</p> <p>5.2. CONSTRUCTION SHEET METAL ENCLOSURE, WELDED CORNERS AND FORMED HINGED COVER SUITABLE FOR LOCKING IN CLOSED POSITION.</p> <p>5.3. TERMINATIONS: MAIN AND BRANCH LUGS AND CONNECTION BLOCKS TO MATCH REQUIRED SIZE AND NUMBER OF INCOMING AND OUTGOING CONDUCTORS AS INDICATED.</p> <p>5.4. SPARE TERMINALS, MINIMUM OF THREE SPARE TERMINALS OR LUGS ON EACH CONNECTION OR LUG BLOCK, SIZED LESS THAN 200A.</p>	
<p>1. REMOVE AND DISPOSE OF THE EXISTING CONDUIT AND CONDUCTORS (THIS INCLUDES ASSOCIATED HANGERS AND SUPPORTS) SHOWN FOR DEMOLITION IN THE DRAWINGS WHILE PRESERVING THE GENERATOR CONTROL PANELS AND AT'SS.</p> <p>2. ALL DEMOLISHED MATERIALS ARE TO BE RECYCLED/DISPOSED OF AND REMOVED FROM SITE.</p> <p>3. IDENTIFICATION</p> <p>1.1. NAMEPLATES: LAMACOID 3 MM THICK PLASTIC ENGRAVING SHEET, MATT WHITE FINISH FACE, BLACK CORE, LETTERING ACCURATELY ALIGNED AND ENGRAVED INTO CORE MECHANICALLY. LAMACOID TO BE ATTACHED WITH SELF TAPPING SCREWS.</p> <p>2. LABELS: EMBOSSED PLASTIC LABELS WITH 6 MM HIGH LETTERS UNLESS SPECIFIED OTHERWISE.</p> <p>3. WIRING ON NAMEPLATES TO BE APPROVED BY OWNER'S REPRESENTATIVE PRIOR TO MANUFACTURE.</p> <p>4. ALLOW FOR MINIMUM OF TWENTY-FIVE (25) LETTERS PER NAMEPLATE.</p> <p>5. NAMEPLATES FOR TERMINAL CABINETS AND JUNCTION BOXES TO INDICATE SYSTEM AND/OR VOLTAGE CHARACTERISTICS.</p> <p>6. IDENTIFY EQUIPMENT WITH NAMEPLATES ENGRAVED ASSET INVENTORY NO. [] OR AS DIRECTED BY OWNER'S REPRESENTATIVE.</p> <p>7. IDENTIFY SOURCE, VOLTAGE AND LOAD ON ALL JUNCTION BOXES. USE OF INDELEBIL MARKER FOR THESE LOCATIONS IS ACCEPTABLE.</p> <p>8. ALL CONDUCTORS TO BE COLOUR CODED IN ACCORDANCE WITH CSA 22.1 -SECTION 4. 038 AND EXISTING BUILDING WIRE COLOUR CODE SYSTEM</p>	<p>1.1.1. 400A, 600V, 3-PHASE + GROUND.</p> <p>1.2. CONSTRUCTION SHEET METAL ENCLOSURE, WELDED CORNERS AND FORMED HINGED COVER SUITABLE FOR LOCKING IN CLOSED POSITION.</p> <p>1.3. TERMINATIONS: MAIN AND BRANCH LUGS AND CONNECTION BLOCKS TO MATCH REQUIRED SIZE AND NUMBER OF INCOMING AND OUTGOING CONDUCTORS AS INDICATED.</p> <p>1.4. SPARE TERMINALS, MINIMUM OF THREE SPARE TERMINALS OR LUGS ON EACH CONNECTION OR LUG BLOCK, SIZED LESS THAN 200A.</p>	<p>2.1.1. 400A, 600V, 3-PHASE + GROUND.</p> <p>2.2. CONSTRUCTION SHEET METAL ENCLOSURE, WELDED CORNERS AND FORMED HINGED COVER SUITABLE FOR LOCKING IN CLOSED POSITION.</p> <p>2.3. TERMINATIONS: MAIN AND BRANCH LUGS AND CONNECTION BLOCKS TO MATCH REQUIRED SIZE AND NUMBER OF INCOMING AND OUTGOING CONDUCTORS AS INDICATED.</p> <p>2.4. SPARE TERMINALS, MINIMUM OF THREE SPARE TERMINALS OR LUGS ON EACH CONNECTION OR LUG BLOCK, SIZED LESS THAN 200A.</p>	<p>3.1.1. 400A, 600V, 3-PHASE + GROUND.</p> <p>3.2. CONSTRUCTION SHEET METAL ENCLOSURE, WELDED CORNERS AND FORMED HINGED COVER SUITABLE FOR LOCKING IN CLOSED POSITION.</p> <p>3.3. TERMINATIONS: MAIN AND BRANCH LUGS AND CONNECTION BLOCKS TO MATCH REQUIRED SIZE AND NUMBER OF INCOMING AND OUTGOING CONDUCTORS AS INDICATED.</p> <p>3.4. SPARE TERMINALS, MINIMUM OF THREE SPARE TERMINALS OR LUGS ON EACH CONNECTION OR LUG BLOCK, SIZED LESS THAN 200A.</p>	<p>4.1.1. 400A, 600V, 3-PHASE + GROUND.</p> <p>4.2. CONSTRUCTION SHEET METAL ENCLOSURE, WELDED CORNERS AND FORMED HINGED COVER SUITABLE FOR LOCKING IN CLOSED POSITION.</p> <p>4.3. TERMINATIONS: MAIN AND BRANCH LUGS AND CONNECTION BLOCKS TO MATCH REQUIRED SIZE AND NUMBER OF INCOMING AND OUTGOING CONDUCTORS AS INDICATED.</p> <p>4.4. SPARE TERMINALS, MINIMUM OF THREE SPARE TERMINALS OR LUGS ON EACH CONNECTION OR LUG BLOCK, SIZED LESS THAN 200A.</p>	<p>5.1.1. 400A, 600V, 3-PHASE + GROUND.</p> <p>5.2. CONSTRUCTION SHEET METAL ENCLOSURE, WELDED CORNERS AND FORMED HINGED COVER SUITABLE FOR LOCKING IN CLOSED POSITION.</p> <p>5.3. TERMINATIONS: MAIN AND BRANCH LUGS AND CONNECTION BLOCKS TO MATCH REQUIRED SIZE AND NUMBER OF INCOMING AND OUTGOING CONDUCTORS AS INDICATED.</p> <p>5.4. SPARE TERMINALS, MINIMUM OF THREE SPARE TERMINALS OR LUGS ON EACH CONNECTION OR LUG BLOCK, SIZED LESS THAN 200A.</p>	
<p>1. REMOVE AND DISPOSE OF THE EXISTING CONDUIT AND CONDUCTORS (THIS INCLUDES ASSOCIATED HANGERS AND SUPPORTS) SHOWN FOR DEMOLITION IN THE DRAWINGS WHILE PRESERVING THE GENERATOR CONTROL PANELS AND AT'SS.</p> <p>2. ALL DEMOLISHED MATERIALS ARE TO BE RECYCLED/DISPOSED OF AND REMOVED FROM SITE.</p> <p>3. IDENTIFICATION</p> <p>1.1. NAMEPLATES: LAMACOID 3 MM THICK PLASTIC ENGRAVING SHEET, MATT WHITE FINISH FACE, BLACK CORE, LETTERING ACCURATELY ALIGNED AND ENGRAVED INTO CORE MECHANICALLY. LAMACOID TO BE ATTACHED WITH SELF TAPPING SCREWS.</p> <p>2. LABELS: EMBOSSED PLASTIC LABELS WITH 6 MM HIGH LETTERS UNLESS SPECIFIED OTHERWISE.</p> <p>3. WIRING ON NAMEPLATES TO BE APPROVED BY OWNER'S REPRESENTATIVE PRIOR TO MANUFACTURE.</p> <p>4. ALLOW FOR MINIMUM OF TWENTY-FIVE (25) LETTERS PER NAMEPLATE.</p> <p>5. NAMEPLATES FOR TERMINAL CABINETS AND JUNCTION BOXES TO INDICATE SYSTEM AND/OR VOLTAGE CHARACTERISTICS.</p> <p>6. IDENTIFY EQUIPMENT WITH NAMEPLATES ENGRAVED ASSET INVENTORY NO. [] OR AS DIRECTED BY OWNER'S REPRESENTATIVE.</p> <p>7. IDENTIFY SOURCE, VOLTAGE AND LOAD ON ALL JUNCTION BOXES. USE OF INDELEBIL MARKER FOR THESE LOCATIONS IS ACCEPTABLE.</p> <p>8. ALL CONDUCTORS TO BE COLOUR CODED IN ACCORDANCE WITH CSA 22.1 -SECTION 4. 038 AND EXISTING BUILDING WIRE COLOUR CODE SYSTEM</p>	<p>1.1.1. 400A, 600V, 3-PHASE + GROUND.</p> <p>1.2. CONSTRUCTION SHEET METAL ENCLOSURE, WELDED CORNERS AND FORMED HINGED COVER SUITABLE FOR LOCKING IN CLOSED POSITION.</p> <p>1.3. TERMINATIONS: MAIN AND BRANCH LUGS AND CONNECTION BLOCKS TO MATCH REQUIRED SIZE AND NUMBER OF INCOMING AND OUTGOING CONDUCTORS AS INDICATED.</p> <p>1.4. SPARE TERMINALS, MINIMUM OF THREE SPARE TERMINALS OR LUGS ON EACH CONNECTION OR LUG BLOCK, SIZED LESS THAN 200A.</p>	<p>2.1.1. 400A, 600V, 3-PHASE + GROUND.</p> <p>2.2. CONSTRUCTION SHEET METAL ENCLOSURE, WELDED CORNERS AND FORMED HINGED COVER SUITABLE FOR LOCKING IN CLOSED POSITION.</p> <p>2.3. TERMINATIONS: MAIN AND BRANCH LUGS AND CONNECTION BLOCKS TO MATCH REQUIRED SIZE AND NUMBER OF INCOMING AND OUTGOING CONDUCTORS AS INDICATED.</p> <p>2.4. SPARE TERMINALS, MINIMUM OF THREE SPARE TERMINALS OR LUGS ON EACH CONNECTION OR LUG BLOCK, SIZED LESS THAN 200A.</p>	<p>3.1.1. 400A, 600V, 3-PHASE + GROUND.</p> <p>3.2. CONSTRUCTION SHEET METAL ENCLOSURE, WELDED CORNERS AND FORMED HINGED COVER SUITABLE FOR LOCKING IN CLOSED POSITION.</p> <p>3.3. TERMINATIONS: MAIN AND BRANCH LUGS AND CONNECTION BLOCKS TO MATCH REQUIRED SIZE AND NUMBER OF INCOMING AND OUTGOING CONDUCTORS AS INDICATED.</p> <p>3.4. SPARE TERMINALS, MINIMUM OF THREE SPARE TERMINALS OR LUGS ON EACH CONNECTION OR LUG BLOCK, SIZED LESS THAN 200A.</p>	<p>4.1.1. 400A, 600V, 3-PHASE + GROUND.</p> <p>4.2. CONSTRUCTION SHEET METAL ENCLOSURE, WELDED CORNERS AND FORMED HINGED COVER SUITABLE FOR LOCKING IN CLOSED POSITION.</p> <p>4.3. TERMINATIONS: MAIN AND BRANCH LUGS AND CONNECTION BLOCKS TO MATCH REQUIRED SIZE AND NUMBER OF INCOMING AND OUTGOING CONDUCTORS AS INDICATED.</p> <p>4.4. SPARE TERMINALS, MINIMUM OF THREE SPARE TERMINALS OR LUGS ON EACH CONNECTION OR LUG BLOCK, SIZED LESS THAN 200A.</p>	<p>5.1.1. 400A, 600V, 3-PHASE + GROUND.</p> <p>5.2. CONSTRUCTION SHEET METAL ENCLOSURE, WELDED CORNERS AND FORMED HINGED COVER SUITABLE FOR LOCKING IN CLOSED POSITION.</p> <p>5.3. TERMINATIONS: MAIN AND BRANCH LUGS AND CONNECTION BLOCKS TO MATCH REQUIRED SIZE AND NUMBER OF INCOMING AND OUTGOING CONDUCTORS AS INDICATED.</p> <p>5.4. SPARE TERMINALS, MINIMUM OF THREE SPARE TERMINALS OR LUGS ON EACH CONNECTION OR LUG BLOCK, SIZED LESS THAN 200A.</p>	
<p>1. REMOVE AND DISPOSE OF THE EXISTING CONDUIT AND CONDUCTORS (THIS INCLUDES ASSOCIATED HANGERS AND SUPPORTS) SHOWN FOR DEMOLITION IN THE DRAWINGS WHILE PRESERVING THE GENERATOR CONTROL PANELS AND AT'SS.</p> <p>2. ALL DEMOLISHED MATERIALS ARE TO BE RECYCLED/DISPOSED OF AND REMOVED FROM SITE.</p> <p>3. IDENTIFICATION</p> <p>1.1. NAMEPLATES: LAMACOID 3 MM THICK PLASTIC ENGRAVING SHEET, MATT WHITE FINISH FACE, BLACK CORE, LETTERING ACCURATELY ALIGNED AND ENGRAVED INTO CORE MECHANICALLY. LAMACOID TO BE ATTACHED WITH SELF TAPPING SCREWS.</p> <p>2. LABELS: EMBOSSED PLASTIC LABELS WITH 6 MM HIGH LETTERS UNLESS SPECIFIED OTHERWISE.</p> <p>3. WIRING ON NAMEPLATES TO BE APPROVED BY OWNER'S REPRESENTATIVE PRIOR TO MANUFACTURE.</p> <p>4. ALLOW FOR MINIMUM OF TWENTY-FIVE (25) LETTERS PER NAMEPLATE.</p> <p>5. NAMEPLATES FOR TERMINAL CABINETS AND JUNCTION BOXES TO INDICATE SYSTEM AND/OR VOLTAGE CHARACTERISTICS.</p> <p>6. IDENTIFY EQUIPMENT WITH NAMEPLATES ENGRAVED ASSET INVENTORY NO. [] OR AS DIRECTED BY OWNER'S REPRESENTATIVE.</p> <p>7. IDENTIFY SOURCE, VOLTAGE AND LOAD ON ALL JUNCTION BOXES. USE OF INDELEBIL MARKER FOR THESE LOCATIONS IS ACCEPTABLE.</p> <p>8. ALL CONDUCTORS TO BE COLOUR CODED IN ACCORDANCE WITH CSA 22.1 -SECTION 4. 038 AND EXISTING BUILDING WIRE COLOUR CODE SYSTEM</p>	<p>1.1.1. 400A, 600V, 3-PHASE + GROUND.</p> <p>1.2. CONSTRUCTION SHEET METAL ENCLOSURE, WELDED CORNERS AND FORMED HINGED COVER SUITABLE FOR LOCKING IN CLOSED POSITION.</p> <p>1.3. TERMINATIONS: MAIN AND BRANCH LUGS AND CONNECTION BLOCKS TO MATCH REQUIRED SIZE AND NUMBER OF INCOMING AND OUTGOING CONDUCTORS AS INDICATED.</p> <p>1.4. SPARE TERMINALS, MINIMUM OF THREE SPARE TERMINALS OR LUGS ON EACH CONNECTION OR LUG BLOCK, SIZED LESS THAN 200A.</p>	<p>2.1.1. 400A, 600V, 3-PHASE + GROUND.</p> <p>2.2. CONSTRUCTION SHEET METAL ENCLOSURE, WELDED CORNERS AND FORMED HINGED COVER SUITABLE FOR LOCKING IN CLOSED POSITION.</p> <p>2.3. TERMINATIONS: MAIN AND BRANCH LUGS AND CONNECTION BLOCKS TO MATCH REQUIRED SIZE AND NUMBER OF INCOMING AND OUTGOING CONDUCTORS AS INDICATED.</p> <p>2.4. SPARE TERMINALS, MINIMUM OF THREE SPARE TERMINALS OR LUGS ON EACH CONNECTION OR LUG BLOCK, SIZED LESS THAN 200A.</p>	<p>3.1.1. 400A, 600V, 3-PHASE + GROUND.</p> <p>3.2. CONSTRUCTION SHEET METAL ENCLOSURE, WELDED CORNERS AND FORMED HINGED COVER SUITABLE FOR LOCKING IN CLOSED POSITION.</p> <p>3.3. TERMINATIONS: MAIN AND BRANCH LUGS AND CONNECTION BLOCKS TO MATCH REQUIRED SIZE AND NUMBER OF INCOMING AND OUTGOING CONDUCTORS AS INDICATED.</p> <p>3.4. SPARE TERMINALS, MINIMUM OF THREE SPARE TERMINALS OR LUGS ON EACH CONNECTION OR LUG BLOCK, SIZED LESS THAN 200A.</p>	<p>4.1.1. 400A, 600V, 3-PHASE + GROUND.</p> <p>4.2. CONSTRUCTION SHEET METAL ENCLOSURE, WELDED CORNERS AND FORMED HINGED COVER SUITABLE FOR LOCKING IN CLOSED POSITION.</p> <p>4.3. TERMINATIONS: MAIN AND BRANCH LUGS AND CONNECTION BLOCKS TO MATCH REQUIRED SIZE AND NUMBER OF INCOMING AND OUTGOING CONDUCTORS AS INDICATED.</p> <p>4.4. SPARE TERMINALS, MINIMUM OF THREE SPARE TERMINALS OR LUGS ON EACH CONNECTION OR LUG BLOCK, SIZED LESS THAN 200A.</p>	<p>5.1.1. 400A, 600V, 3-PHASE + GROUND.</p> <p>5.2. CONSTRUCTION SHEET METAL ENCLOSURE, WELDED CORNERS AND FORMED HINGED COVER SUITABLE FOR LOCKING IN CLOSED POSITION.</p> <p>5.3. TERMINATIONS: MAIN AND BRANCH LUGS AND CONNECTION BLOCKS TO MATCH REQUIRED SIZE AND NUMBER OF INCOMING AND OUTGOING CONDUCTORS AS INDICATED.</p> <p>5.4. SPARE TERMINALS, MINIMUM OF THREE SPARE TERMINALS OR LUGS ON EACH CONNECTION OR LUG BLOCK, SIZED LESS THAN 200A.</p>	
<p>1. REMOVE AND DISPOSE OF THE EXISTING CONDUIT AND CONDUCTORS (THIS INCLUDES ASSOCIATED HANGERS AND SUPPORTS) SHOWN FOR DEMOLITION IN THE DRAWINGS WHILE PRESERVING THE GENERATOR CONTROL PANELS AND AT'SS.</p> <p>2. ALL DEMOLISHED MATERIALS ARE TO BE RECYCLED/DISPOSED OF AND REMOVED FROM SITE.</p> <p>3. IDENTIFICATION</p> <p>1.1. NAMEPLATES: LAMACOID 3 MM THICK PLASTIC ENGRAVING SHEET, MATT WHITE FINISH FACE, BLACK CORE, LETTERING ACCURATELY ALIGNED AND ENGRAVED INTO CORE MECHANICALLY. LAMACOID TO BE ATTACHED WITH SELF TAPPING SCREWS.</p> <p>2. LABELS: EMBOSSED PLASTIC LABELS WITH 6 MM HIGH LETTERS UNLESS SPECIFIED OTHERWISE.</p> <p>3. WIRING ON NAMEPLATES TO BE APPROVED BY OWNER'S REPRESENTATIVE PRIOR TO MANUFACTURE.</p> <p>4. ALLOW FOR MINIMUM OF TWENTY-FIVE (25) LETTERS PER NAMEPLATE.</p> <p>5. NAMEPLATES FOR TERMINAL CABINETS AND JUNCTION BOXES TO INDICATE SYSTEM AND/OR VOLTAGE CHARACTERISTICS.</p> <p>6. IDENTIFY EQUIPMENT WITH NAMEPLATES ENGRAVED ASSET INVENTORY NO. [] OR AS DIRECTED BY OWNER'S REPRESENTATIVE.</p> <p>7. IDENTIFY SOURCE, VOLTAGE AND LOAD ON ALL JUNCTION BOXES. USE OF INDELEBIL MARKER FOR THESE LOCATIONS IS ACCEPTABLE.</p> <p>8. ALL CONDUCTORS TO BE COLOUR CODED IN ACCORDANCE WITH CSA 22.1 -SECTION 4. 038 AND EXISTING BUILDING WIRE COLOUR CODE SYSTEM</p>	<p>1.1.1. 400A, 600V, 3-PHASE + GROUND.</p> <p>1.2. CONSTRUCTION SHEET METAL ENCLOSURE, WELDED CORNERS AND FORMED HINGED COVER SUITABLE FOR LOCKING IN CLOSED POSITION.</p> <p>1.3. TERMINATIONS: MAIN AND BRANCH LUGS AND CONNECTION BLOCKS TO MATCH REQUIRED SIZE AND NUMBER OF INCOMING AND OUTGOING CONDUCTORS AS INDICATED.</p> <p>1.4. SPARE TERMINALS, MINIMUM OF THREE SPARE TERMINALS OR LUGS ON EACH CONNECTION OR LUG BLOCK, SIZED LESS THAN 200A.</p>	<p>2.1.1. 400A, 600V, 3-PHASE + GROUND.</p> <p>2.2. CONSTRUCTION SHEET METAL ENCLOSURE, WELDED CORNERS AND FORMED HINGED COVER SUITABLE FOR LOCKING IN CLOSED POSITION.</p> <p>2.3. TERMINATIONS: MAIN AND BRANCH LUGS AND CONNECTION BLOCKS TO MATCH REQUIRED SIZE AND NUMBER OF INCOMING AND OUTGOING CONDUCTORS AS INDICATED.</p> <p>2.4. SPARE TERMINALS, MINIMUM OF THREE SPARE TERMINALS OR LUGS ON EACH CONNECTION OR LUG BLOCK, SIZED LESS THAN 200A.</p>	<p>3.1.1. 400A, 600V, 3-PHASE + GROUND.</p> <p>3.2. CONSTRUCTION SHEET METAL ENCLOSURE, WELDED CORNERS AND FORMED HINGED COVER SUITABLE FOR LOCKING IN CLOSED POSITION.</p> <p>3.3. TERMINATIONS: MAIN AND BRANCH LUGS AND CONNECTION BLOCKS TO MATCH REQUIRED SIZE AND NUMBER OF INCOMING AND OUTGOING CONDUCTORS AS INDICATED.</p> <p>3.4. SPARE TERMINALS, MINIMUM OF THREE SPARE TERMINALS OR LUGS ON EACH CONNECTION OR LUG BLOCK, SIZED LESS THAN 200A.</p>	<p>4.1.1. 400A, 600V, 3-PHASE + GROUND.</p> <p>4.2. CONSTRUCTION SHEET METAL ENCLOSURE, WELDED CORNERS AND FORMED HINGED COVER SUITABLE FOR LOCKING IN CLOSED POSITION.</p> <p>4.3. TERMINATIONS: MAIN AND BRANCH LUGS AND CONNECTION BLOCKS TO MATCH REQUIRED SIZE AND NUMBER OF INCOMING AND OUTGOING CONDUCTORS AS INDICATED.</p> <p>4.4. SPARE TERMINALS, MINIMUM OF THREE SPARE TERMINALS OR LUGS ON EACH CONNECTION OR LUG BLOCK, SIZED LESS THAN 200A.</p>	<p>5.1.1. 400A, 600V, 3-PHASE + GROUND.</p> <p>5.2. CONSTRUCTION SHEET METAL ENCLOSURE, WELDED CORNERS AND FORMED HINGED COVER SUITABLE FOR LOCKING IN CLOSED POSITION.</p> <p>5.3. TERMINATIONS: MAIN AND BRANCH LUGS AND CONNECTION BLOCKS TO MATCH REQUIRED SIZE AND NUMBER OF INCOMING AND OUTGOING CONDUCTORS AS INDICATED.</p> <p>5.4. SPARE TERMINALS, MINIMUM OF THREE SPARE TERMINALS OR LUGS ON EACH CONNECTION OR LUG BLOCK, SIZED LESS THAN 200A.</p>	
<p>1. REMOVE AND DISPOSE OF THE EXISTING CONDUIT AND CONDUCTORS (THIS INCLUDES ASSOCIATED HANGERS AND SUPPORTS) SHOWN FOR DEMOLITION IN THE DRAWINGS WHILE PRESERVING THE GENERATOR CONTROL PANELS AND AT'SS.</p> <p>2. ALL DEMOLISHED MATERIALS ARE TO BE RECYCLED/DISPOSED OF AND REMOVED FROM SITE.</p> <p>3. IDENTIFICATION</p> <p>1.1. NAMEPLATES: LAMACOID 3 MM THICK PLASTIC ENGRAVING SHEET, MATT WHITE FINISH FACE, BLACK CORE, LETTERING ACCURATELY ALIGNED AND ENGRAVED INTO CORE MECHANICALLY. LAMACOID TO BE ATTACHED WITH SELF TAPPING SCREWS.</p> <p>2. LABELS: EMBOSSED PLASTIC LABELS WITH 6 MM HIGH LETTERS UNLESS SPECIFIED OTHERWISE.</p> <p>3. WIRING ON NAMEPLATES TO BE APPROVED BY OWNER'S REPRESENTATIVE PRIOR TO MANUFACTURE.</p> <p>4. ALLOW FOR MINIMUM OF TWENTY-FIVE (25) LETTERS PER NAMEPLATE.</p> <p>5. NAMEPLATES FOR TERMINAL CABINETS AND JUNCTION BOXES TO INDICATE SYSTEM AND/OR VOLTAGE CHARACTERISTICS.</p> <p>6. IDENTIFY EQUIPMENT WITH NAMEPLATES ENGRAVED ASSET INVENTORY NO. [] OR AS DIRECTED BY OWNER'S REPRESENTATIVE.</p> <p>7. IDENTIFY SOURCE, VOLTAGE AND LOAD ON ALL JUNCTION BOXES. USE OF INDELEBIL MARKER FOR THESE LOCATIONS IS ACCEPTABLE.</p> <p>8. ALL CONDUCTORS TO BE COLOUR CODED IN ACCORDANCE WITH CSA 22.1 -SECTION 4. 038 AND EXISTING BUILDING WIRE COLOUR CODE SYSTEM</p>	<p>1.1.1. 400A, 600V, 3-PHASE + GROUND.</p> <p>1.2. CONSTRUCTION SHEET METAL ENCLOSURE, WELDED CORNERS AND FORMED HINGED COVER SUITABLE FOR LOCKING IN CLOSED POSITION.</p> <p>1.3. TERMINATIONS: MAIN AND BRANCH LUGS AND CONNECTION BLOCKS TO MATCH REQUIRED SIZE AND NUMBER OF INCOMING AND OUTGOING CONDUCTORS AS INDICATED.</p> <p>1.4. SPARE TERMINALS, MINIMUM OF THREE SPARE TERMINALS OR LUGS ON EACH CONNECTION OR LUG BLOCK, SIZED LESS THAN 200A.</p>	<p>2.1.1. 400A, 600V, 3-PHASE + GROUND.</p> <p>2.2. CONSTRUCTION SHEET METAL ENCLOSURE, WELDED CORNERS AND FORMED HINGED COVER SUITABLE FOR LOCKING IN CLOSED POSITION.</p> <p>2.3. TERMINATIONS: MAIN AND BRANCH LUGS AND CONNECTION BLOCKS TO MATCH REQUIRED SIZE AND NUMBER OF INCOMING AND OUTGOING CONDUCTORS AS INDICATED.</p> <p>2.4. SPARE TERMINALS, MINIMUM OF THREE SPARE TERMINALS OR LUGS ON EACH CONNECTION OR LUG BLOCK, SIZED LESS THAN 200A.</p>	<p>3.1.1. 400A, 600V, 3-PHASE + GROUND.</p> <p>3.2. CONSTRUCTION SHEET METAL ENCLOSURE, WELDED CORNERS AND FORMED HINGED COVER SUITABLE FOR LOCKING IN CLOSED POSITION.</p> <p>3.3. TERMINATIONS: MAIN AND BRANCH LUGS AND CONNECTION BLOCKS TO MATCH REQUIRED SIZE AND NUMBER OF INCOMING AND OUTGOING CONDUCTORS AS INDICATED.</p> <p>3.4. SPARE TERMINALS, MINIMUM OF THREE SPARE TERMINALS OR LUGS ON EACH CONNECTION OR LUG BLOCK, SIZED LESS THAN 200A.</p>	<p>4.1.1. 400A, 600V, 3-PHASE + GROUND.</p> <p>4.2. CONSTRUCTION SHEET METAL ENCLOSURE, WELDED CORNERS AND FORMED HINGED COVER SUITABLE FOR LOCKING IN CLOSED POSITION.</p> <p>4.3. TERMINATIONS: MAIN AND BRANCH LUGS AND CONNECTION BLOCKS TO MATCH REQUIRED SIZE AND NUMBER OF INCOMING AND OUTGOING CONDUCTORS AS INDICATED.</p> <p>4.4. SPARE TERMINALS, MINIMUM OF THREE SPARE TERMINALS OR LUGS ON EACH CONNECTION OR LUG BLOCK, SIZED LESS THAN 200A.</p>	<p>5.1.1. 400A, 600V, 3-PHASE + GROUND.</p> <p>5.2. CONSTRUCTION SHEET METAL ENCLOSURE, WELDED CORNERS AND FORMED HINGED COVER SUITABLE FOR LOCKING IN CLOSED POSITION.</p> <p>5.3. TERMINATIONS: MAIN AND BRANCH LUGS AND CONNECTION BLOCKS TO MATCH REQUIRED SIZE AND NUMBER OF INCOMING AND OUTGOING CONDUCTORS AS INDICATED.</p> <p>5.4. SPARE TERMINALS, MINIMUM OF THREE SPARE TERMINALS OR LUGS ON EACH CONNECTION OR LUG BLOCK, SIZED LESS THAN 200A.</p>	
<p>1. REMOVE AND DISPOSE OF THE EXISTING CONDUIT AND CONDUCTORS (THIS INCLUDES ASSOCIATED HANGERS AND SUPPORTS) SHOWN FOR DEMOLITION IN THE DRAWINGS WHILE PRESERVING THE GENERATOR CONTROL PANELS AND AT'SS.</p> <p>2. ALL DEMOLISHED MATERIALS ARE TO BE RECYCLED/DISPOSED OF AND REMOVED FROM SITE.</p> <p>3. IDENTIFICATION</p> <p>1.1. NAMEPLATES: LAMACOID 3 MM THICK PLASTIC ENGRAVING SHEET, MATT WHITE FINISH FACE, BLACK CORE, LETTERING ACCURATELY ALIGNED AND ENGRAVED INTO CORE MECHANICALLY. LAMACOID TO BE ATTACHED WITH SELF TAPPING SCREWS.</p> <p>2. LABELS: EMBOSSED PLASTIC LABELS WITH 6 MM HIGH LETTERS UNLESS SPECIFIED OTHERWISE.</p> <p>3. WIRING ON NAMEPLATES TO BE APPROVED BY OWNER'S REPRESENTATIVE PRIOR TO MANUFACTURE.</p> <p>4. ALLOW FOR MINIMUM OF TWENTY-FIVE (25) LETTERS PER NAMEPLATE.</p> <p>5. NAMEPLATES FOR TERMINAL CABINETS AND JUNCTION BOXES TO INDICATE SYSTEM AND/OR VOLTAGE CHARACTERISTICS.</p> <p>6. IDENTIFY EQUIPMENT WITH NAMEPLATES ENGRAVED ASSET INVENTORY NO. [] OR AS DIRECTED BY OWNER'S REPRESENTATIVE.</p> <p>7. IDENTIFY SOURCE, VOLTAGE AND LOAD ON ALL JUNCTION BOXES. USE OF INDELEBIL MARKER FOR THESE LOCATIONS IS ACCEPTABLE.</p> <p>8. ALL CONDUCTORS TO BE COLOUR CODED IN ACCORDANCE WITH CSA 22.1 -SECTION 4. 038 AND EXISTING BUILDING WIRE COLOUR CODE SYSTEM</p>	<p>1.1.1. 400A, 600V, 3-PHASE + GROUND.</p> <p>1.2. CONSTRUCTION SHEET METAL ENCLOSURE, WELDED CORNERS AND FORMED HINGED COVER SUITABLE FOR LOCKING IN CLOSED POSITION.</p> <p>1.3. TERMINATIONS: MAIN AND BRANCH LUGS AND CONNECTION BLOCKS TO MATCH REQUIRED SIZE AND NUMBER OF INCOMING AND OUTGOING CONDUCTORS AS INDICATED.</p> <p>1.4. SPARE TERMINALS, MINIMUM OF THREE SPARE TERMINALS OR LUGS ON EACH CONNECTION OR LUG BLOCK, SIZED LESS THAN 200A.</p>	<p>2.1.1. 400A, 600V, 3-PHASE + GROUND.</p> <p>2.2. CONSTRUCTION SHEET METAL ENCLOSURE, WELDED CORNERS AND FORMED HINGED COVER SUITABLE FOR LOCKING IN CLOSED POSITION.</p> <p>2.3. TERMINATIONS: MAIN AND BRANCH LUGS AND CONNECTION BLOCKS TO MATCH REQUIRED SIZE AND NUMBER OF INCOMING AND OUTGOING CONDUCTORS AS INDICATED.</p> <p>2.4. SPARE TERMINALS, MINIMUM OF THREE SPARE TERMINALS OR LUGS ON EACH CONNECTION OR LUG BLOCK, SIZED LESS THAN 200A.</p>	<p>3.1.1. 400A, 600V, 3-PHASE + GROUND.</p> <p>3.2. CONSTRUCTION SHEET METAL ENCLOSURE, WELDED CORNERS AND FORMED HINGED COVER SUITABLE FOR LOCKING IN CLOSED POSITION.</p> <p>3.3. TERMINATIONS: MAIN AND BRANCH LUGS AND CONNECTION BLOCKS TO MATCH REQUIRED SIZE AND NUMBER OF INCOMING AND OUTGOING CONDUCTORS AS INDICATED.</p> <p>3.4. SPARE TERMINALS, MINIMUM OF THREE SPARE TERMINALS OR LUGS ON EACH CONNECTION OR LUG BLOCK, SIZED LESS THAN 200A.</p>	<p>4.1.1. 400A, 600V, 3-PHASE + GROUND.</p> <p>4.2. CONSTRUCTION SHEET METAL ENCLOSURE, WELDED CORNERS AND FORMED HINGED COVER SUITABLE FOR LOCKING IN CLOSED POSITION.</p> <p>4.3. TERMINATIONS: MAIN AND BRANCH LUGS AND CONNECTION BLOCKS TO MATCH REQUIRED SIZE AND NUMBER OF INCOMING AND OUTGOING CONDUCTORS AS INDICATED.</p> <p>4.4. SPARE TERMINALS, MINIMUM OF THREE SPARE TERMINALS OR LUGS ON EACH CONNECTION OR LUG BLOCK, SIZED LESS THAN 200A.</p>	<p>5.1.1. 400A, 600V, 3-PHASE + GROUND.</p> <p>5.2. CONSTRUCTION SHEET METAL ENCLOSURE, WELDED CORNERS AND FORMED HINGED COVER SUITABLE FOR LOCKING IN CLOSED POSITION.</p> <p>5.3. TERMINATIONS: MAIN AND BRANCH LUGS AND CONNECTION BLOCKS TO MATCH REQUIRED SIZE AND NUMBER OF INCOMING AND OUTGOING CONDUCTORS AS</p>	

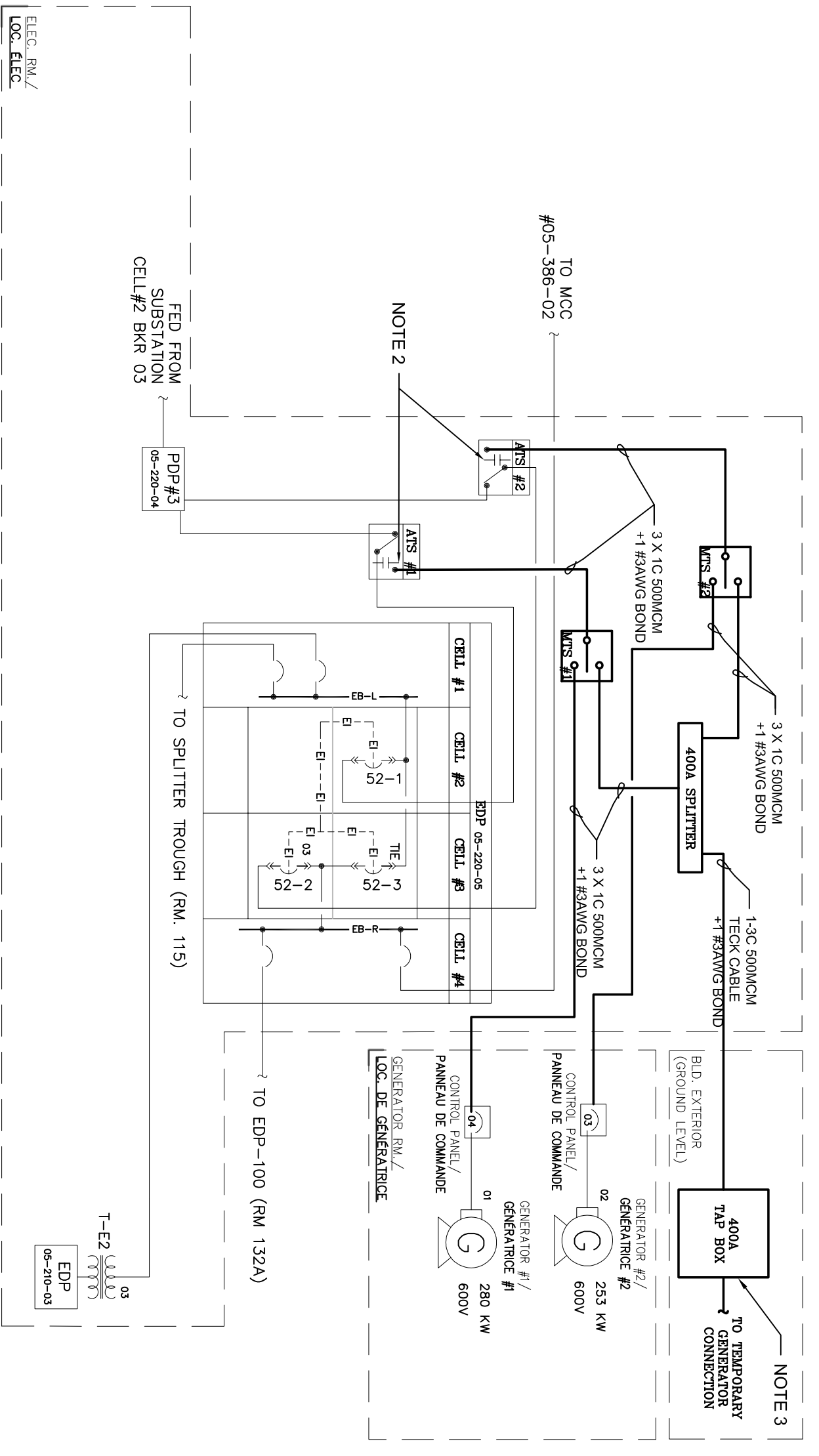
E



1 DEMOLITION
NTS

DRAWING NOTES

1. REMOVE EXISTING CONDUCTORS BETWEEN BOTH ATSS AND THE GENERATOR CONTROL PANELS THEY ARE SUPPLIED FROM.
2. CONTROL WIRING IS TO BE ARMORED CABLES AND ARE TO RUN FROM CONTACT IN ATS TO A TERMINAL BLOCK IN NEW TAP BOX. CONTROL IS BY NEW SELECTOR SWITCHES TO BE PROVIDED AND INSTALLED BY CONTRACTOR. REFER TO E-3-P2 DIE M/L 3 FOR FURTHER INFORMATION.
3. PROVIDE LABEL TO INDICATE THAT THE TEMPORARY GENERATOR WYE POINT IS TO BE BONDED TO GROUND.



2 NEW WORK
NTS



200-2932 Baseline Road
Ottawa, ON K2H 1B1
Tel: (613) 739-2910 Fax: (613) 739-4926

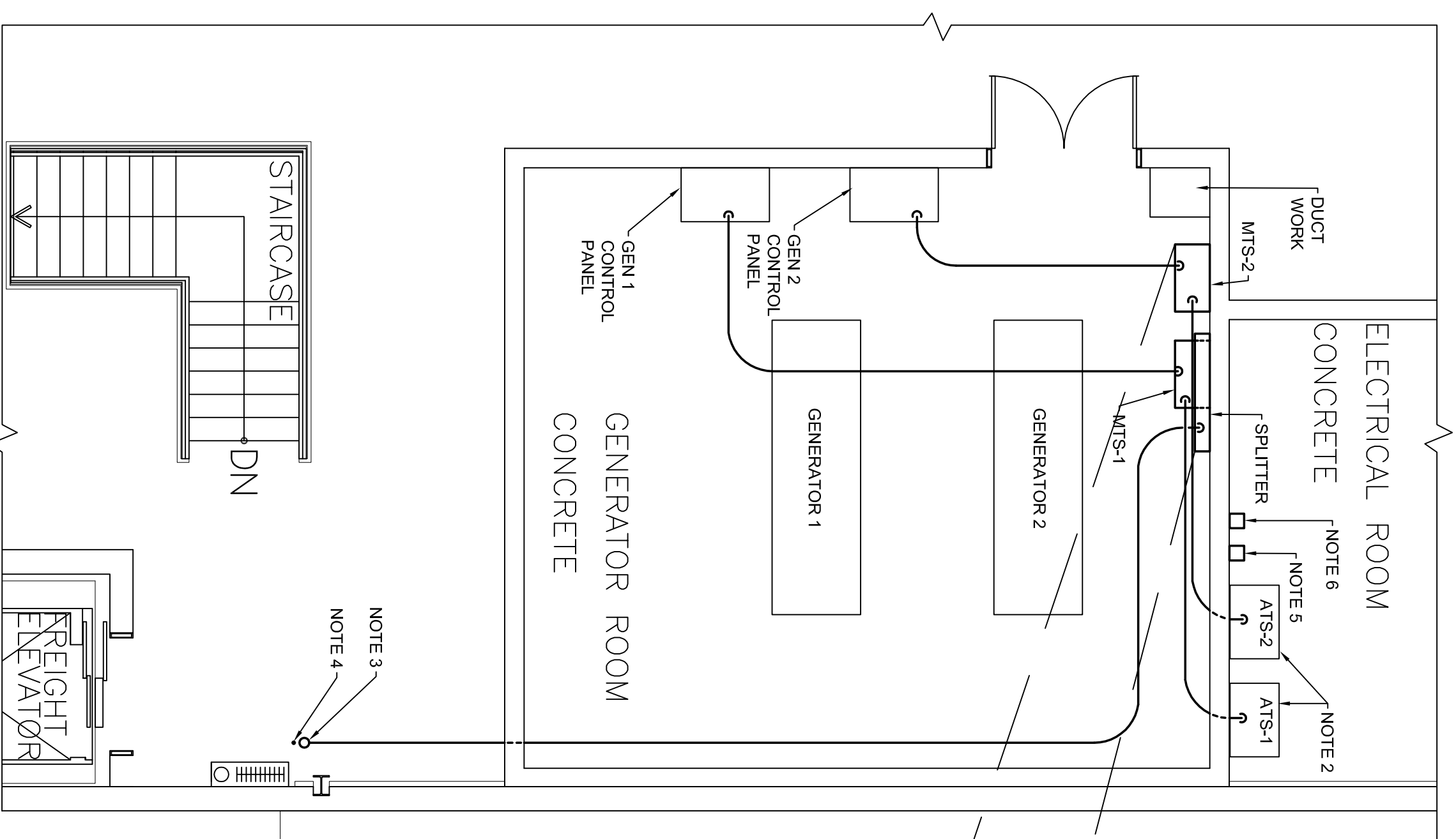
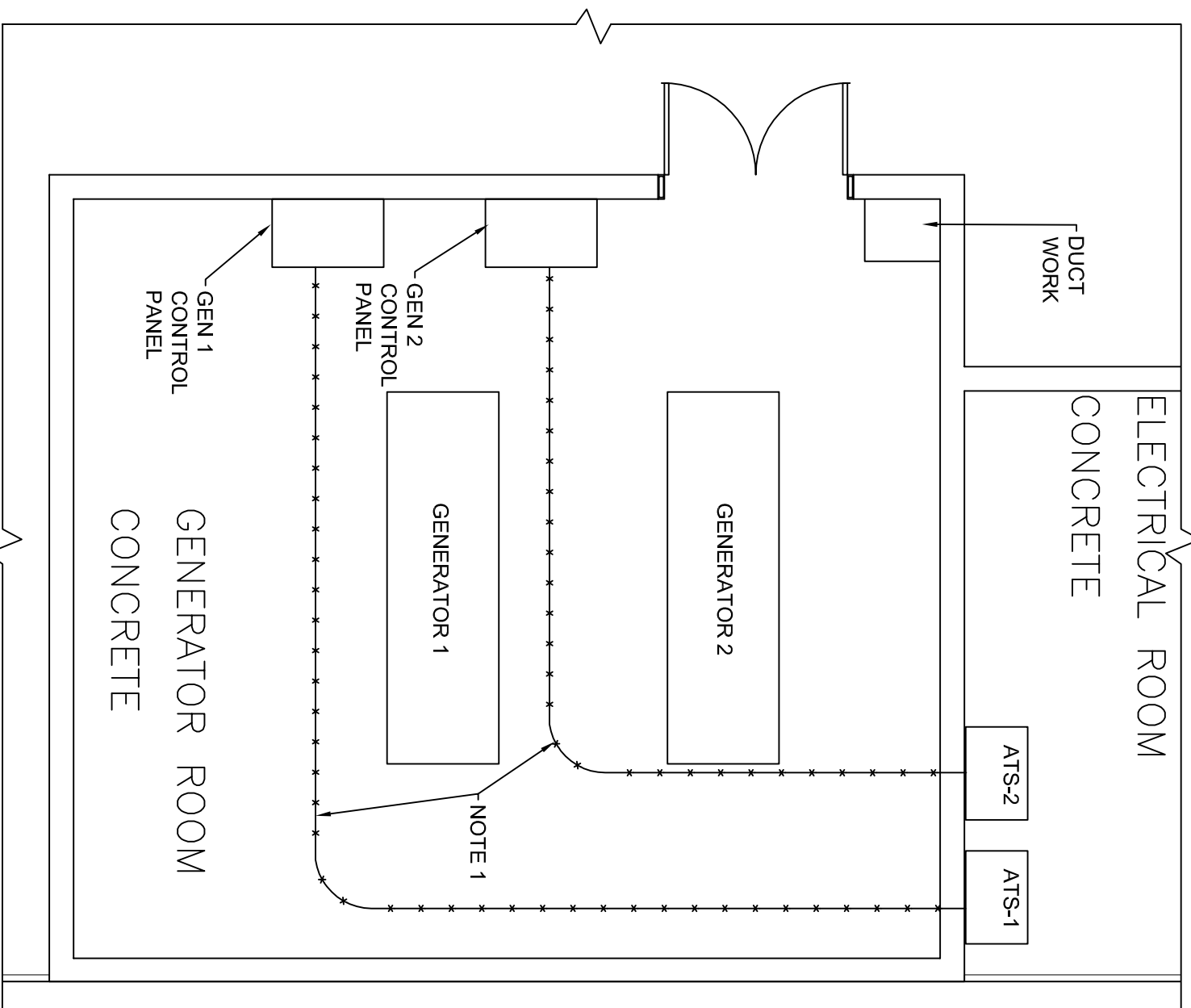
CONSULTANT:

REV	DESCRIPTION	DATE	BY
1	ISSUED FOR 75% CLIENT REVIEW	2019.11.28	WJS
2	ISSUED FOR TENDER	2019.12.09	WJS
3	ISSUED FOR TENDER - REV. 1	2019.12.11	WJS
4	ISSUED FOR TENDER - REV. 2	2019.12.23	WJS

DO NOT SCALE DRAWINGS. CONTRACTOR MUST VERIFY ALL DIMENSIONS AND ADVISE CONSULTANTS OF ANY ERRORS OR OMISSIONS. NO VARIATIONS OR WRITTEN APPROVAL. ALL PREVIOUS ISSUES OF THIS DRAWING ARE SUPERSEDED BY THE LATEST REVISION. ALL DRAWINGS AND SPECIFICATIONS REMAIN THE PROPERTY OF MORRISON HERSHFIELD LIMITED.

**RADIATION PROTECTION
BUILDING
SINGLE LINE DIAGRAM**

DESIGNED BY:	WJS	CHECKED BY:	KS
SCALE:	NTS	DWG FILE:	
Project No:	1904432.00	Drawing No:	E-3-P2

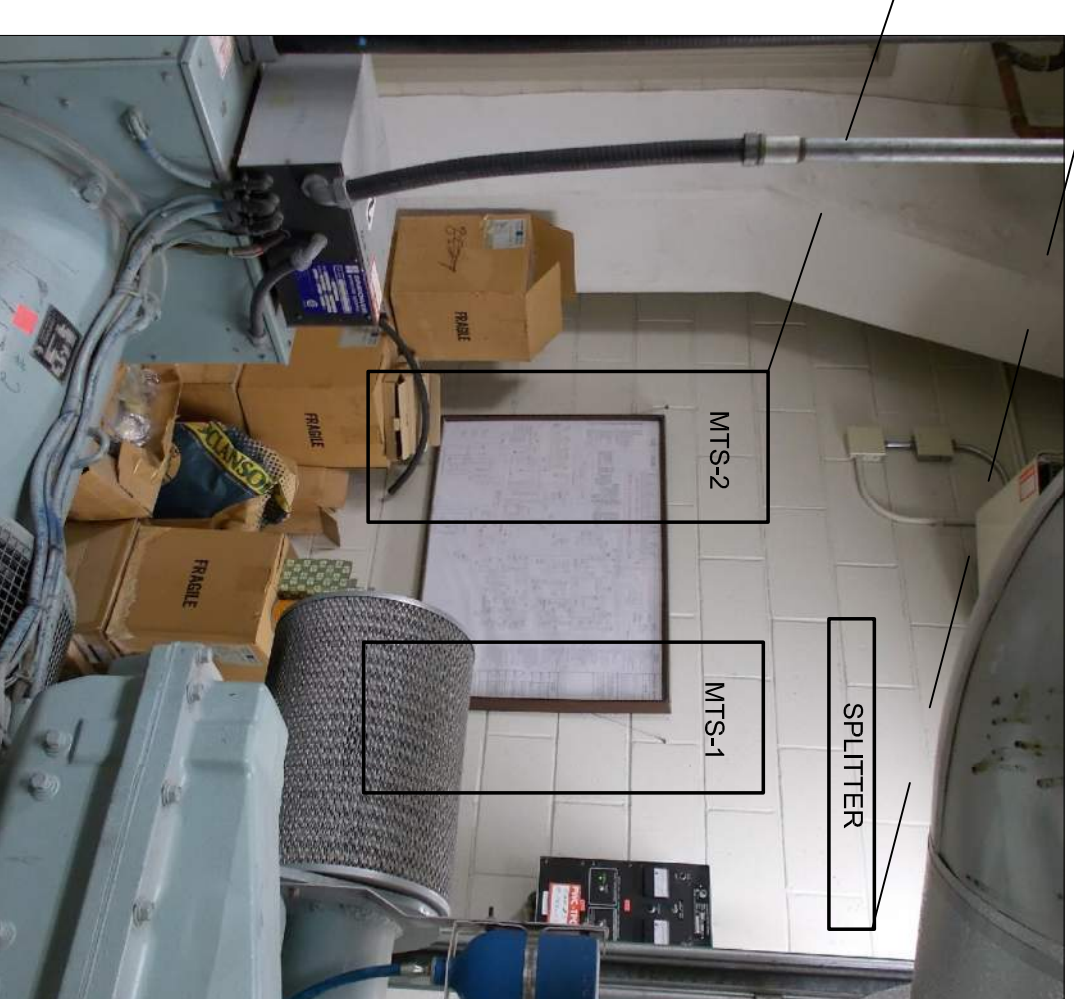


GENERAL NOTES

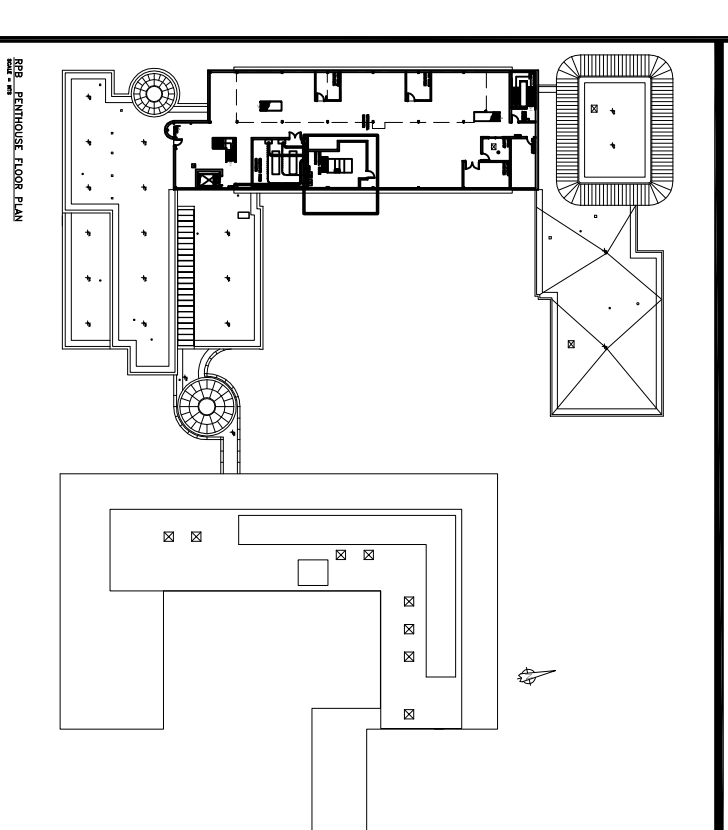
- CONTRACTOR TO PATCH AND MAKE GOOD ANY AND ALL DAMAGE AND/OR PENETRATIONS. ALL PENETRATIONS TO BE PROPERLY FIRE STOPPED.
- CONDUCTORS IN CONDUIT AND CABLE ROUTING IS APPROXIMATE. CONTRACTOR TO DETERMINE FINAL ROUTING IN FIELD SO AS TO AVOID EXISTING EQUIPMENT, LIGHTING, CABLES AND CONDUIT. ARMORED CONTROL WIRING CABLES SHOULD RUN AS CLOSE AS POSSIBLE TO THE TECK CABLE.
- ALL TECK CABLE, CONTROL WIRING CABLES AND CONDUCTORS IN CONDUIT ARE TO BE PROPERLY SUPPORTED AND FASTENED TO A WALL OR CEILING WITH GALVANIZED STEEL TRUSS AS REQUIRED. ENSURE THERE IS CODE REQUIRED SPACING BETWEEN ALL CONDUCTORS IN CONDUIT AND/OR CABLES.

DRAWING NOTES

- REMOVE EXISTING CONDUCTORS AND CONDUIT BACK TO SOURCE.
- CONTRACTOR TO PROVIDE AND INSTALL ARMORED CONTROL WIRING CABLES FROM ATSS-1 AND ATSS-2 TO TAP BOX. FOR CLARITY, THESE CABLES ARE NOT SHOWN.
- PROVIDE CORE HOLE IN FLOOR FOR TECK CABLE. CONTRACTOR TO PROVIDE AND USE X-RAY SCANNING IN AREA WHERE ALL FLOOR PENETRATIONS WILL BE MADE BEFORE CORING HOLE. STRUCTURAL RE-BAR IS NOT TO BE CUT. CONTRACTOR RESPONSIBLE FOR FINAL LOCATIONS AND COORDINATION OF ALL FLOOR SLAB PENETRATIONS.
- PROVIDE CORE HOLE IN FLOOR FOR ATSS CONTROL WIRING CABLE. CONTRACTOR TO PROVIDE AND USE X-RAY SCANNING IN AREA WHERE ALL FLOOR PENETRATIONS WILL BE MADE BEFORE CORING HOLE. STRUCTURAL RE-BAR IS NOT TO BE CUT. CONTRACTOR RESPONSIBLE FOR FINAL LOCATIONS AND COORDINATION OF ALL FLOOR SLAB PENETRATIONS.
- GENERATOR SELECTOR SWITCH FOR ATSS-1.
- GENERATOR SELECTOR SWITCH FOR ATSS-2.



3 EQUIPMENT PLACEMENT - DRAWING NOT TO SCALE
NTS



REV	DESCRIPTION	DATE	BY
1	ISSUED FOR 75% CLIENT REVIEW	2019.11.28	WJS
2	ISSUED FOR TENDER	2019.12.09	WJS
3	ISSUED FOR TENDER - REV. 1	2019.12.11	WJS
4	ISSUED FOR TENDER - REV. 2	2019.12.23	WJS

DO NOT SCALE DRAWINGS. CONTRACTOR MUST VERIFY ALL DIMENSIONS AND ADVISE CONSULTANTS OF ANY ERRORS OR OMISSIONS. NO VARIATIONS OR WRITTEN APPROVAL. ALL PREVIOUS ISSUES OF THIS DRAWING ARE SUPERSEDED BY THE LATEST REVISION. ALL DRAWINGS AND SPECIFICATIONS REMAIN THE PROPERTY OF MORRISON HERSHEYFIELD LIMITED.

SHEET TITLE:
RADIATION PROTECTION BUILDING PENTHOUSE - DEMOLITION & NEW WORK LAYOUT

DESIGNED BY: WJS	CHECKED BY: KS
SCALE: AS SHOWN	DWG FILE:
Project No: 1904432.00	Drawing No: E-4-P2

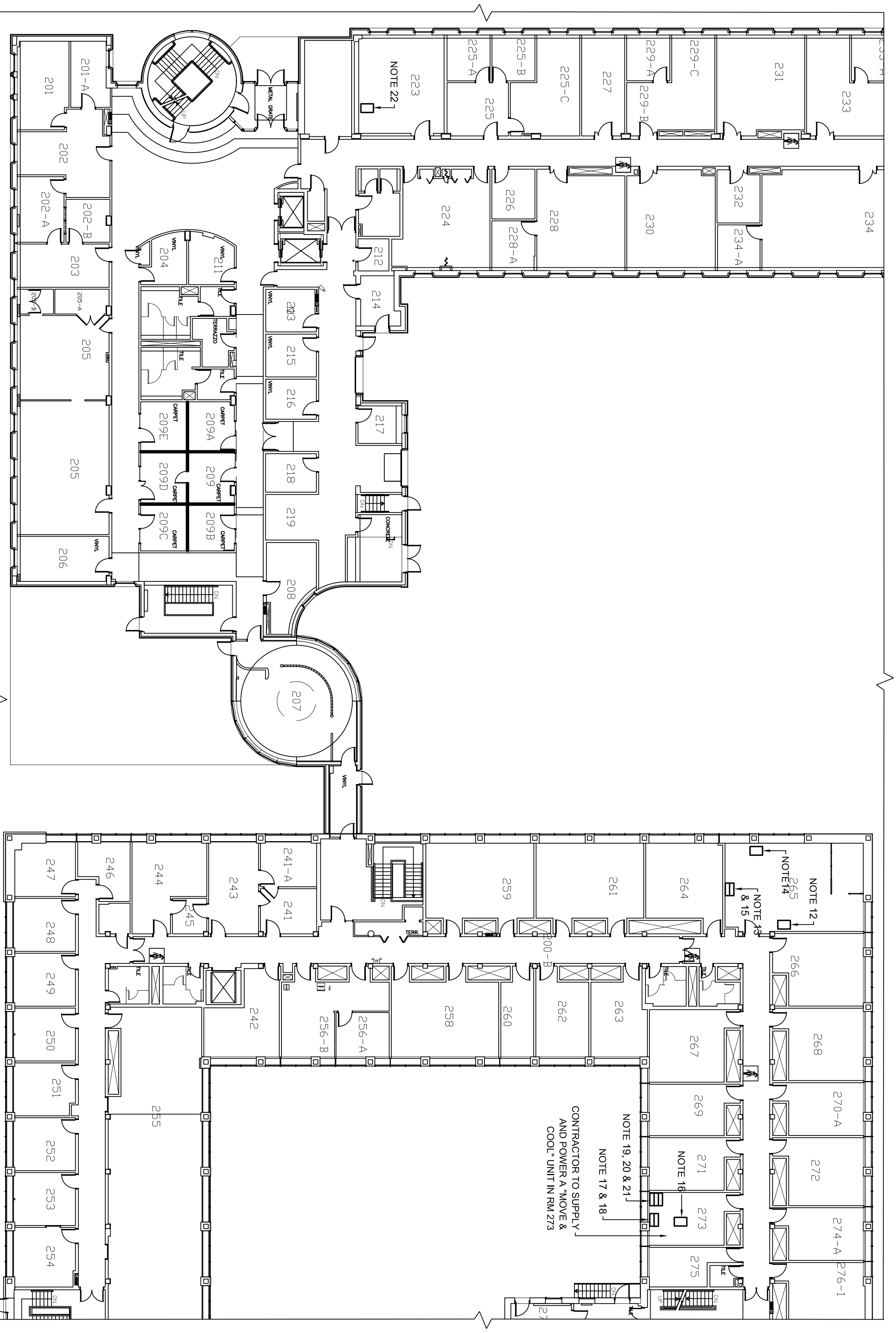
CONSULTANT:
MORRISON HERSHEYFIELD
 200-2932 Baseline Road
 Ottawa, ON K2H 1B1
 Tel: (613) 739-2910 Fax: (613) 739-4926

STAMP:

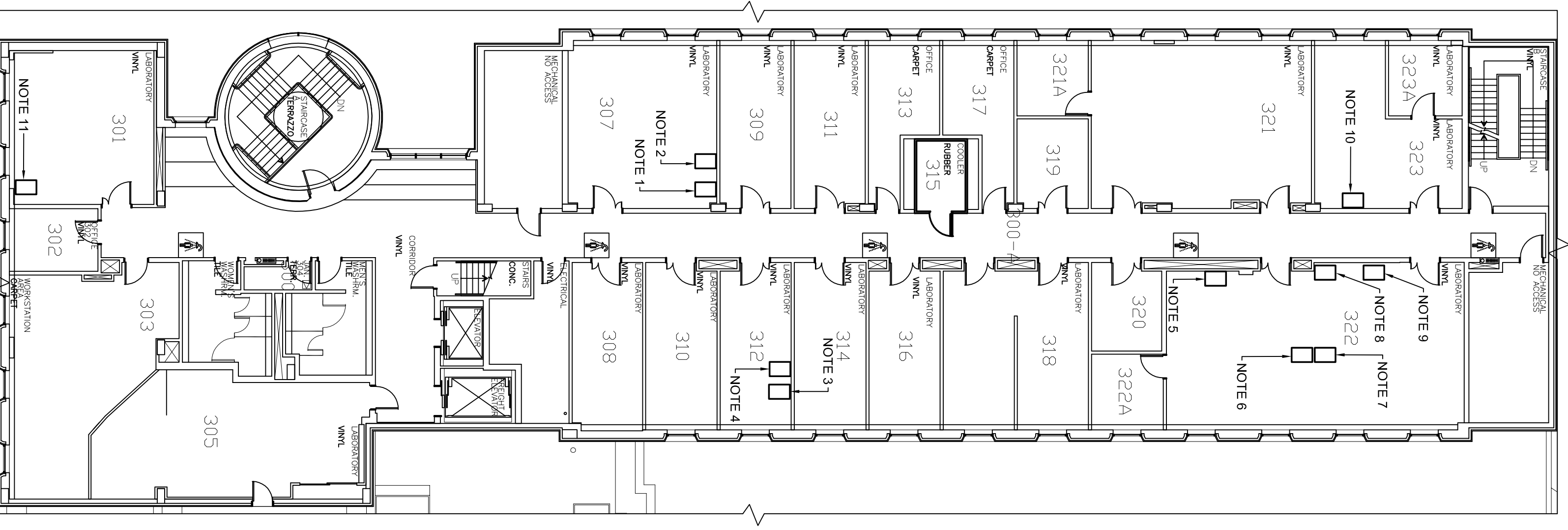
GENERAL NOTES

- A. CONTRACTOR TO PROVIDE PORTABLE GENERATORS FOR 4 SEPARATE 24 HOUR PERIODS AND ENSURE ALL CRITICAL EQUIPMENT INDICATED ON DRAWINGS HAS POWER AT ALL TIMES.
- B. POWER REQUIRED AND TYPE OF RECEPTACLE SUPPLYING EACH PIECE OF CRITICAL EQUIPMENT IS PROVIDED IN CHART BELOW.
- C. CONTRACTOR TO TEST AND ENSURE ALTERNATE POWER SOURCE AND ALL REQUIRED CONNECTIONS ARE IN WORKING ORDER BEFORE NORMAL POWER IS TURNED OFF TO THE CRITICAL EQUIPMENT.

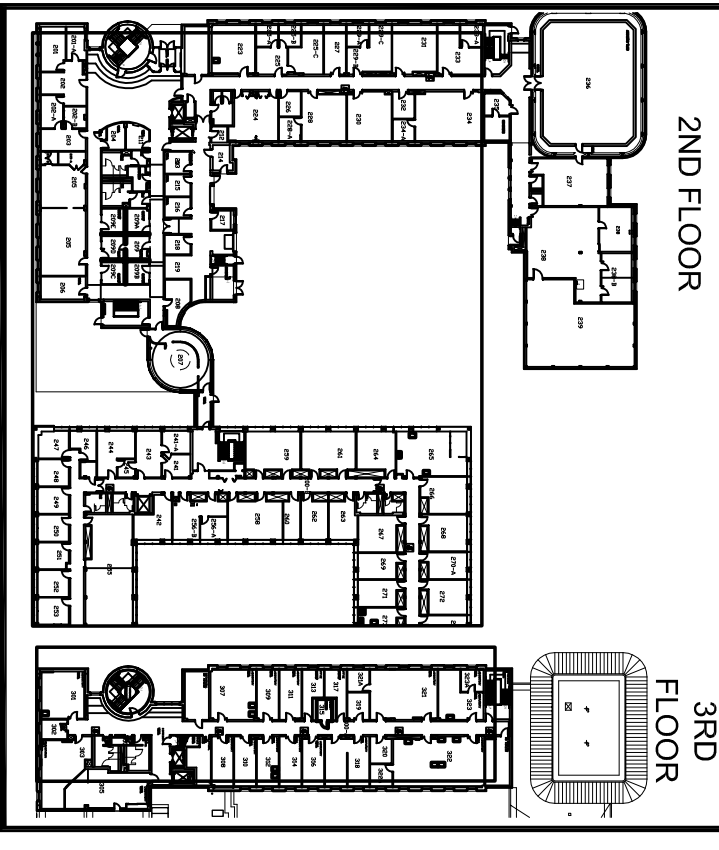
NOTE NO.	EQUIPMENT AND/OR NAME	MAKE	POWER (A & V)	TYPE
1	FRIDGE, FREEZER	WHIRLPOOL, GOLD	15A, 120VAC	5-15R
2	FREEZER, -40	REVOCO	15A, 120VAC	5-20R X 2
3	UNDER COUNTER FRIDGE	FISHER SCIENTIFIC	15A, 120VAC	5-15R
4	UNDER COUNTER FREEZER	FISHER SCIENTIFIC	15A, 120VAC	5-15R
5	STAND-UP FRIDGE/FREEZER COMBO.	VINGINGTON	15A, 120VAC	5-15R
6	UNDER COUNTER FREEZER	FISHER SCIENTIFIC	15A, 120VAC	5-15R
7	UNDER COUNTER FRIDGE	FISHER SCIENTIFIC	15A, 120VAC	5-15R
8	FREEZER, -80	THERMO	20A, 120VAC	5-20R
9	FRIDGE, FREEZER	THERMO	20A, 120VAC	5-20R
10	FRIDGE, FREEZER	GE	15A, 120VAC	5-15R
11	FREEZER, -20	SO LOW	15A, 120VAC	5-15R
12	GA1/GA2 UPS	N/A	1500VA, 120VAC	5-15R
13	GA3/GA4 UPS	N/A	1400VA, 120VAC	5-15R
14	GA5 UPS	N/A	1400VA, 120VAC	5-15R
15	UPS RACK	N/A	1400VA, 120VAC	5-15R
16	DETECTOR UPS	N/A	15A, 120VAC	5-15R
17	RACK #2	N/A	2200VA, 120VAC	5-15R
18	RACK #2	N/A	1400VA, 120VAC	5-15R
19	UPS RACK	N/A	1400VA, 120VAC	5-15R
20	UPS RACK	N/A	1400VA, 120VAC	5-15R
21	UPS RACK	N/A	3000VA, 208VAC, 1-PHASE	LS-20R
22	ICP-MS	N/A	22KW, 230VAC 32A	CABLE



1 2ND FLOOR - CRITICAL EQUIPMENT
1:200



2 3RD FLOOR - CRITICAL EQUIPMENT
1:150



CONSULTANT:

MH MORRISON HERSHFIELD

200-2932 Baseline Road
Ottawa, ON K2H 1B1
Tel: (613) 739-2910 Fax: (613) 739-4926

REV	DESCRIPTION	DATE	BY
1	ISSUED FOR 75% CLIENT REVIEW	2019.11.28	WJS
2	ISSUED FOR TENDER	2019.12.09	WJS
3	ISSUED FOR TENDER - REV. 1	2019.12.11	WJS
4	ISSUED FOR TENDER - REV. 2	2019.12.23	WJS

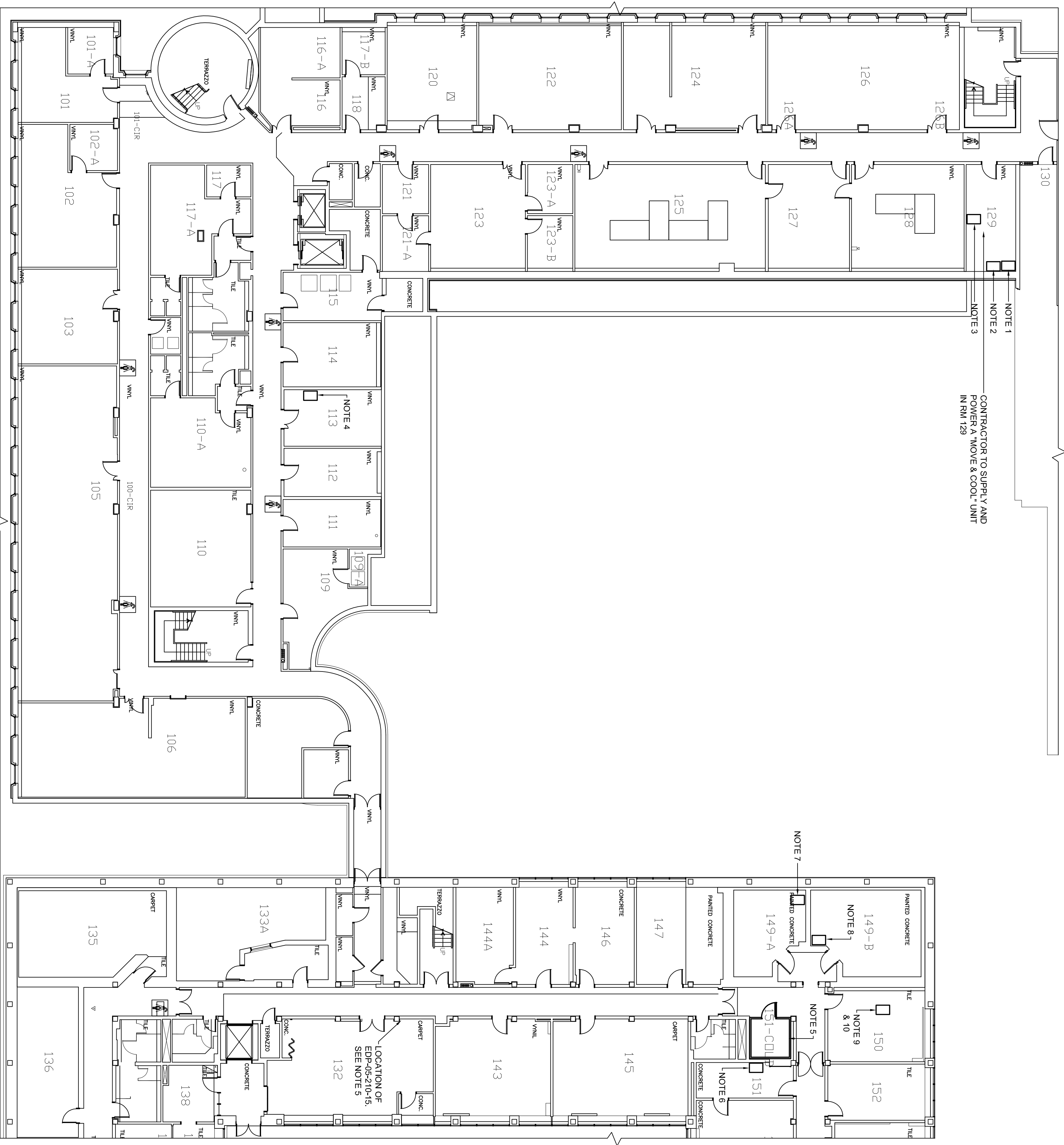
DO NOT SCALE DRAWINGS. CONTRACTOR MUST VERIFY ALL DIMENSIONS AND ADVISE CONSULTANTS OF ANY ERRORS OR OMISSIONS. NO VARIATIONS OR WRITTEN APPROVAL. ALL PREVIOUS ISSUES OF THIS DRAWING ARE SUPERSEDED BY THE LATEST REVISION. ALL DRAWINGS AND SPECIFICATIONS REMAIN THE PROPERTY OF MORRISON HERSHFIELD LIMITED.

SHEET TITLE:

RADIATION PROTECTION BUILDING 2ND & 3RD FLOOR - CRITICAL EQUIPMENT LAYOUT

DESIGNED BY:	PW	DATE:	2019.11.22
CHECKED BY:	WJS	DWG FILE:	KS
SCALE:	AS SHOWN		

Project No: 1904432.00 Drawing No: E-6-P2



GENERAL NOTES

- A. CONTRACTOR TO PROVIDE PORTABLE GENERATOR(S) FOR A SEPARATE 24 HOUR PERIODS AND ENSURE ALL CRITICAL EQUIPMENT INDICATED ON DRAWING HAS POWER AT ALL TIMES.
- B. POWER REQUIRED AND TYPE OF RECEPTACLE SUPPLYING EACH PIECE OF CRITICAL EQUIPMENT ARE PROVIDED IN THE CHART BELOW. EQUIPMENT THAT REQUIRES A DIRECT CONNECTION RATHER THAN A RECEPTACLE ARE NOTED ON THE CHART.
- C. CONTRACTOR TO TEST AND ENSURE ALTERNATE POWER SOURCE AND ALL REQUIRED CONNECTIONS ARE IN WORKING ORDER BEFORE NORMALS POWER IS TURNED OFF TO THE CRITICAL EQUIPMENT.

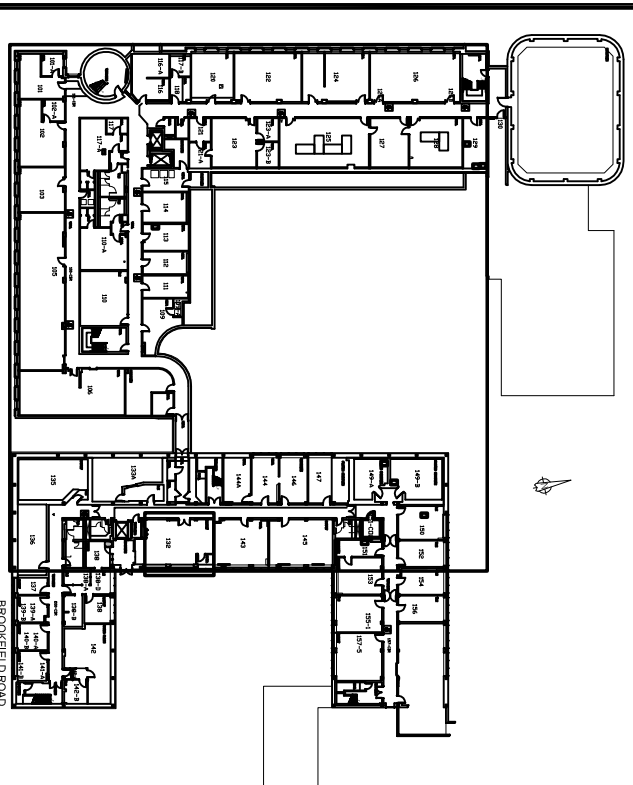
NOTE NO.	EQUIPMENT AND/OR NAME	MAKE	POWER (A & V)	TYPE
1	RACK UPS	N/A	1500VA, 120VAC	5-1SR
2	SAUNA UPS	N/A	3KVA, 208VAC, 1-PHASE	6-1SR
3	THIN MAN UPS	N/A	1500VA, 120VAC	5-1SR
4	FREEZER, -80	REVCO	20A, 208VAC, 1-PHASE	6-2UR
5*	RM 148 CLD RM (EDP-05-210-15 CCT 1,3,5)	N/A	60A, 120/208VAC	N/A
6	FRIDGE	N/A	15A, 120VAC	5-1SR
7	FRIDGE	N/A	15A, 120VAC	5-1SR
8	FRIDGE	N/A	15A, 120VAC	5-1SR
9	DETECTOR 9 UPS	N/A	1500VA, 120VAC	5-1SR
10	5 GENERAL IT SUPPORT UPS'S	N/A	1500VA, 120VAC	5-1SR

* INDICATED CIRCUIT BREAKERS IN PANELBOARD SUPPLY THE COLD ROOM IN 148 THAT IS A CRITICAL PIECE OF EQUIPMENT AND MUST HAVE PROVISIONS MADE TO ENSURE IT REMAINS POWERED AT ALL TIMES.

CONSULTANT:



200-2932 Baseline Road
 Ottawa, ON K2H 1B1
 Tel: (613) 739-2910 Fax: (613) 739-4926



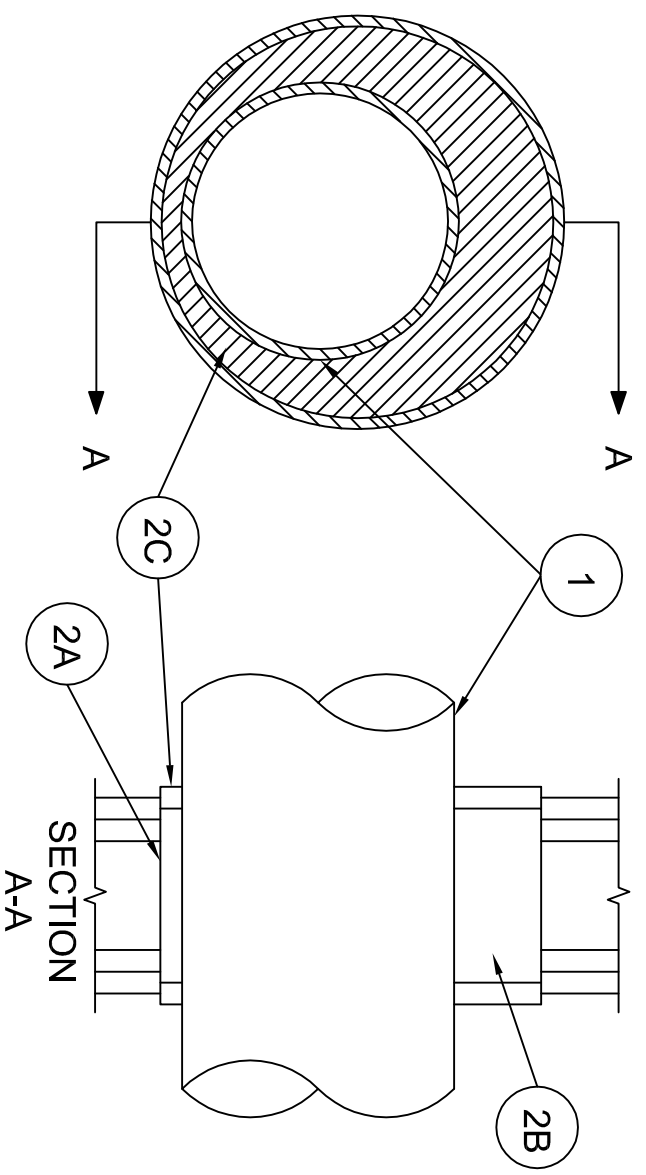
REV	DESCRIPTION	DATE	BY
1	ISSUED FOR 75% CLIENT REVIEW	2019.11.28	WJS
2	ISSUED FOR TENDER	2019.12.09	WJS
3	ISSUED FOR TENDER - REV. 1	2019.12.11	WJS
4	ISSUED FOR TENDER - REV. 2	2019.12.23	WJS

DO NOT SCALE DRAWINGS. CONTRACTOR MUST VERIFY ALL DIMENSIONS AND ADVISE CONSULTANTS OF ANY ERRORS OR OMISSIONS. NO VARIATIONS OR WRITTEN APPROVAL. ALL PREVIOUS ISSUES OF THIS DRAWING ARE SUPERSEDED BY THE LATEST REVISION. ALL DRAWINGS AND SPECIFICATIONS REMAIN THE PROPERTY OF MORRISON HERSHFIELD LIMITED.

**RADIATION PROTECTION BUILDING
 1ST FLOOR - CRITICAL EQUIPMENT LAYOUT**

DESIGNED BY: WJS	CHECKED BY: KS
SCALE: AS SHOWN	DWG FILE:
Project No: 1904432.00	Drawing No: E-7-P2

1
 1ST FLOOR - CRITICAL EQUIPMENT
 1:150

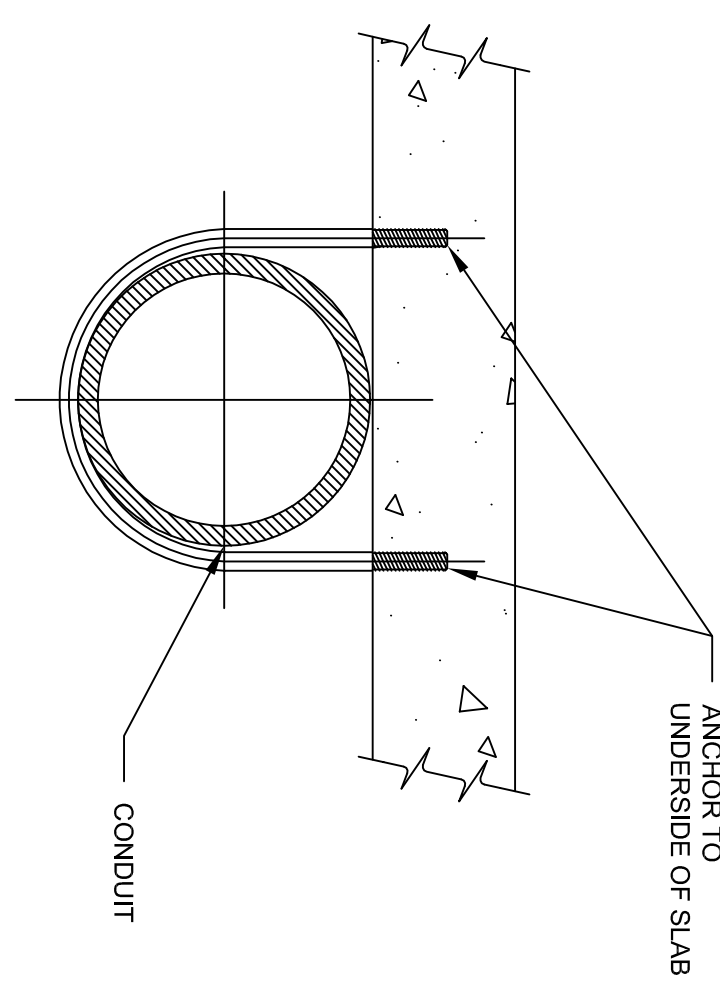


DETAIL NOTES

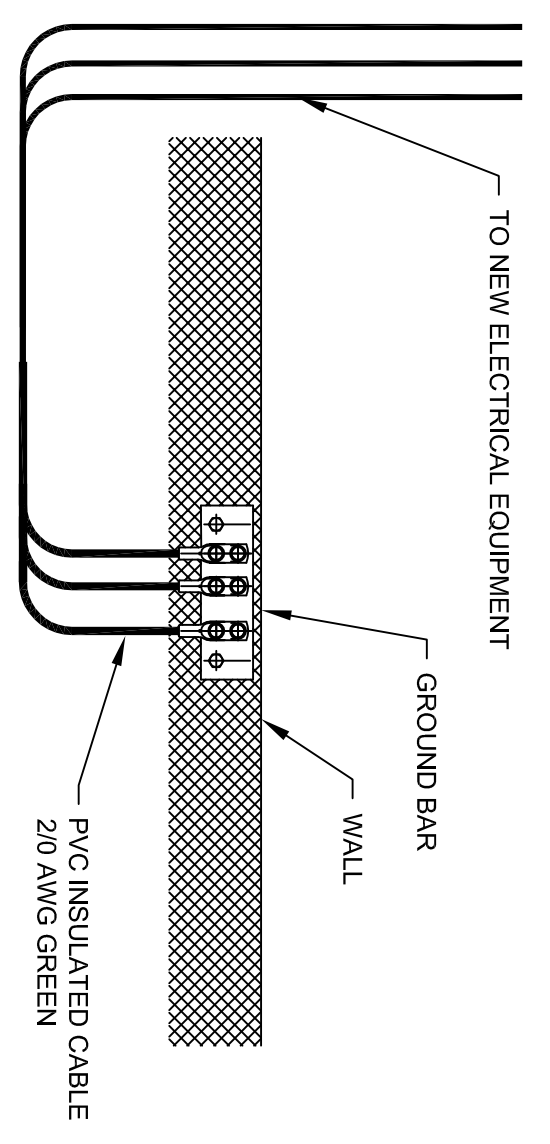
1 THROUGH PENETRANTS- ONE METALLIC PIPE OR TUBING TO BE INSTALLED EITHER CONCENTRICALLY OR ECCENTRICALLY WITHIN THE FIRESTOP SYSTEM. PIPE OR TUBING TO BE RIGIDLY SUPPORTED ON BOTH SIDES OF WALL ASSEMBLY. THE ANNULAR SPACE SHALL BE MIN 19mm. TO MAX 114mm THE FOLLOWING TYPES AND SIZES OF METALLIC PIPES OR TUBING MAY BE USED:
 A. STEEL PIPE-
 B. IRON PIPE-
 C. COPPER TUBING-
 D. COPPER PIPE-

2 FIRESTOP SYSTEM- THE FIRESTOP SYSTEM SHALL CONSIST OF THE FOLLOWING:
 A. METALLIC SLEEVE-
 B. PACKING MATERIAL-
 C. FILL, VOID OR CAVITY MATERIAL - SEALANT-
 *BEARING THE UL CLASSIFICATION MARK

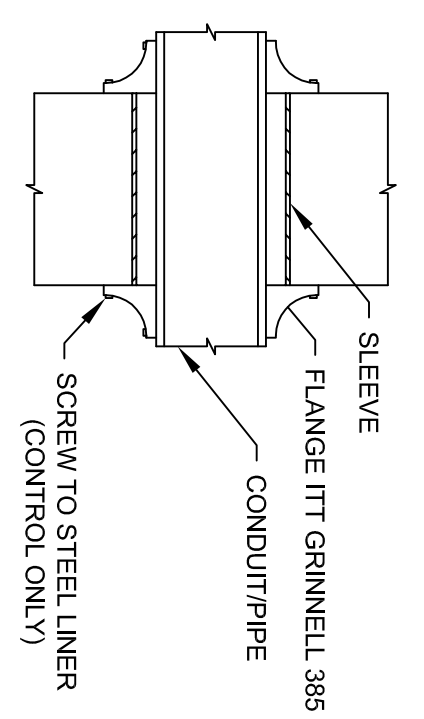
1 TYPICAL FIRE STOPPING DETAIL
 NTS



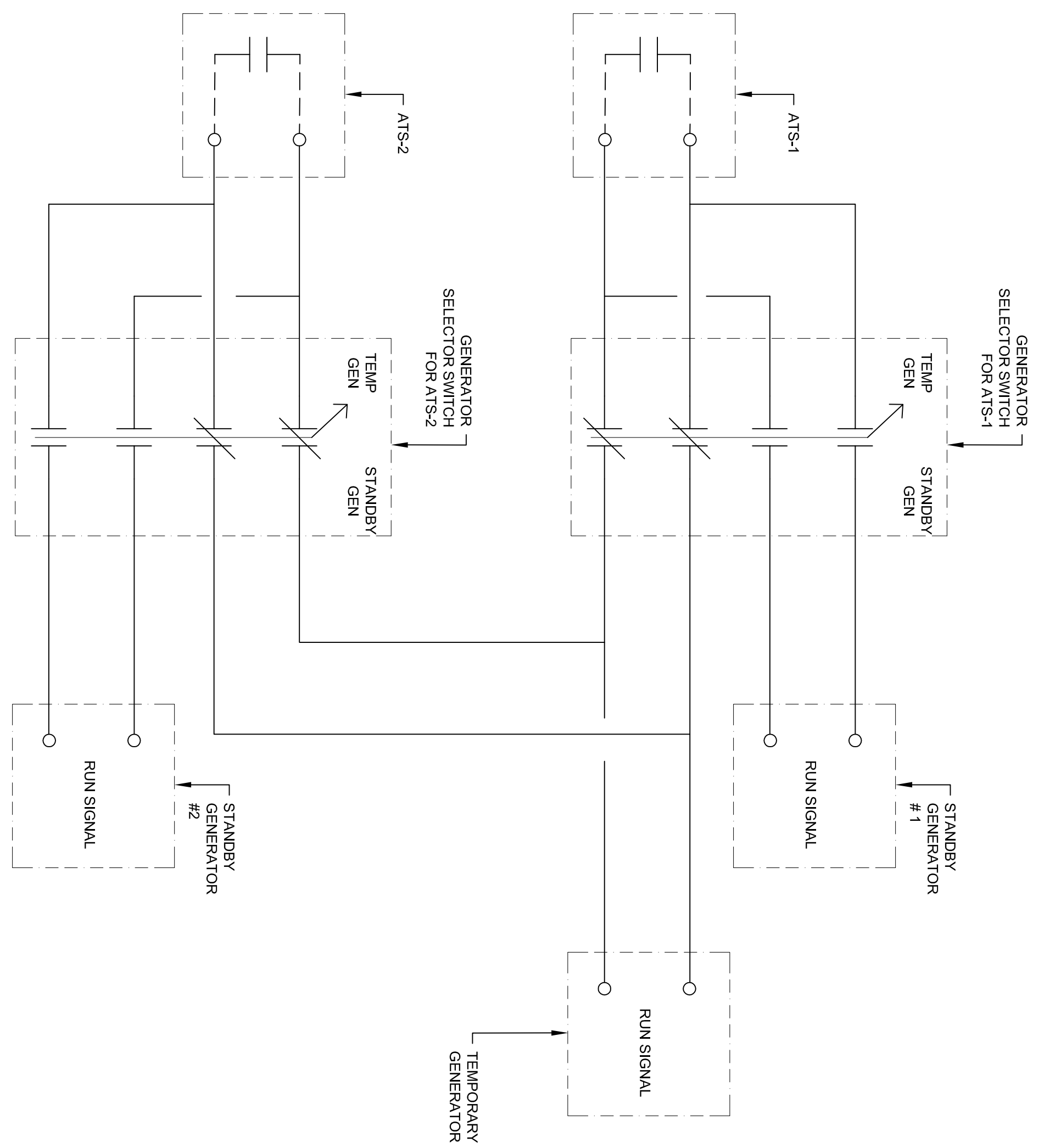
2 TYPICAL CONDUIT HANGER
 NTS



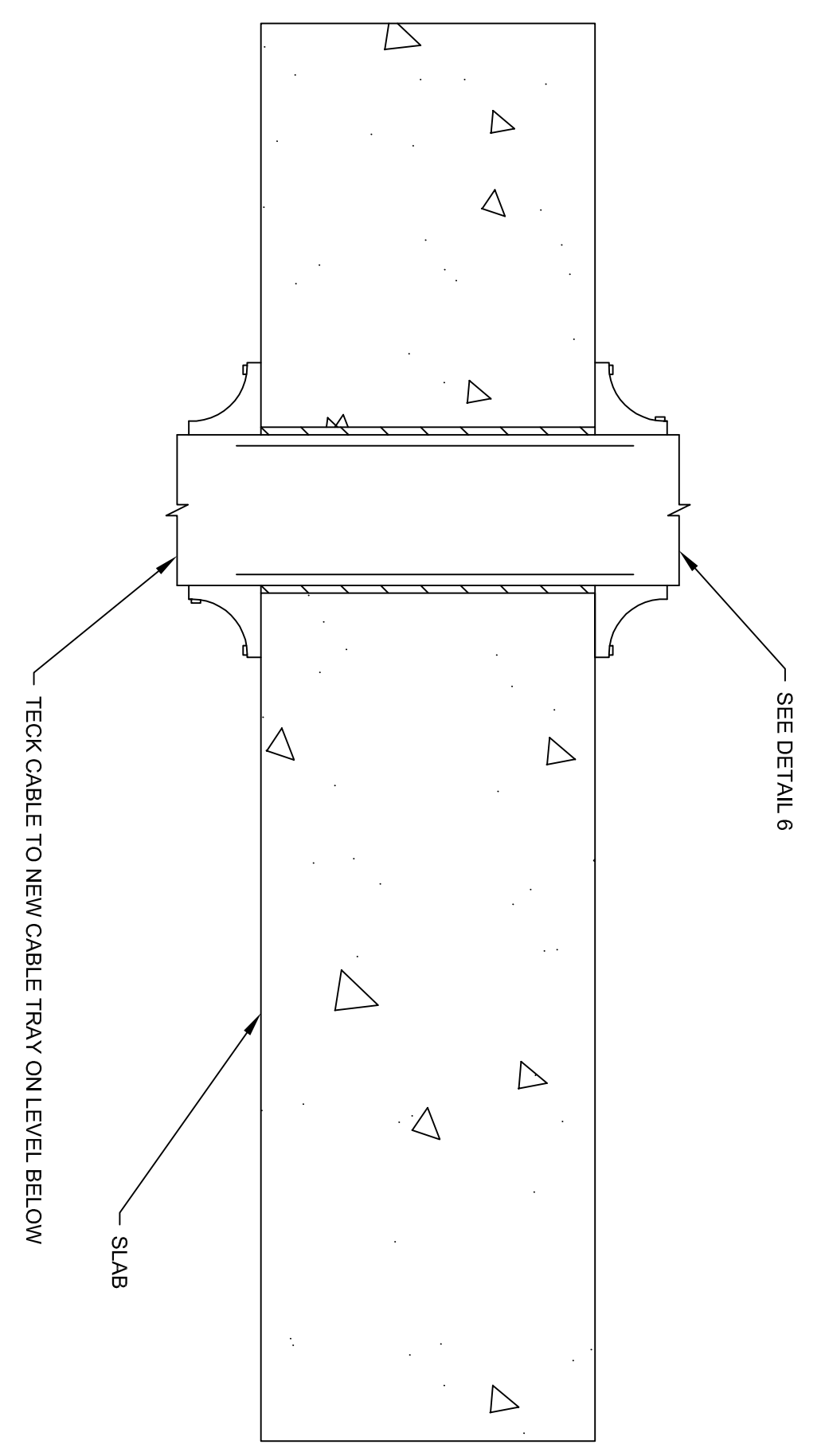
4 GROUND BAR CONNECTION
 NTS



6 CONDUIT SLEEVE
 NTS



3 NEW ATS CONTROL WIRING DIAGRAM
 NTS



7 SLAB PENETRATION
 NTS

<p>STAMP:</p> <p>CONSULTANT:</p> <p>MH MORRISON HERSHFIELD</p> <p>200-2932 Baseline Road Ottawa, ON K2H 1B1 Tel: (613) 739-2910 Fax: (613) 739-4926</p>																					
<p>DO NOT SCALE DRAWINGS. CONTRACTOR MUST VERIFY ALL DIMENSIONS AND ADVISE CONSULTANTS OF ANY ERRORS OR OMISSIONS. NO VARIATIONS OR WRITTEN APPROVAL. ALL PREVIOUS ISSUES OF THIS DRAWING ARE SUPERSEDED BY THE LATEST REVISION. ALL DRAWINGS AND SPECIFICATIONS REMAIN THE PROPERTY OF MORRISON HERSHFIELD LIMITED.</p>																					
<p>SHEET TITLE:</p> <p>RADIATION PROTECTION BUILDING ELECTRICAL DETAILS</p>	<table border="1"> <thead> <tr> <th>REV</th> <th>DESCRIPTION</th> <th>DATE</th> <th>BY</th> </tr> </thead> <tbody> <tr> <td>1</td> <td>ISSUED FOR 75% CLIENT REVIEW</td> <td>2019.11.28</td> <td>WJS</td> </tr> <tr> <td>2</td> <td>ISSUED FOR TENDER</td> <td>2019.12.09</td> <td>WJS</td> </tr> <tr> <td>3</td> <td>ISSUED FOR TENDER - REV. 1</td> <td>2019.12.11</td> <td>WJS</td> </tr> <tr> <td>4</td> <td>ISSUED FOR TENDER - REV. 2</td> <td>2019.12.23</td> <td>WJS</td> </tr> </tbody> </table>	REV	DESCRIPTION	DATE	BY	1	ISSUED FOR 75% CLIENT REVIEW	2019.11.28	WJS	2	ISSUED FOR TENDER	2019.12.09	WJS	3	ISSUED FOR TENDER - REV. 1	2019.12.11	WJS	4	ISSUED FOR TENDER - REV. 2	2019.12.23	WJS
REV	DESCRIPTION	DATE	BY																		
1	ISSUED FOR 75% CLIENT REVIEW	2019.11.28	WJS																		
2	ISSUED FOR TENDER	2019.12.09	WJS																		
3	ISSUED FOR TENDER - REV. 1	2019.12.11	WJS																		
4	ISSUED FOR TENDER - REV. 2	2019.12.23	WJS																		
<p>DESIGNED BY: WJS</p> <p>CHECKED BY: KS</p> <p>SCALE: AS SHOWN</p> <p>DWG FILE:</p>	<p>DRAMA BY: PW</p> <p>DATE: 2019.11.22</p> <p>PROJECT NO: 1904432.00</p> <p>DRAWING NO: E-8-P2</p>																				

ANNEX C

SECURITY REQUIREMENT CHECKLIST (SRCL)

Refer to following 4 pages



Contract Number / Numéro du contrat MH- 20000
Security Classification / Classification de sécurité UNCLASSIFIED

**SECURITY REQUIREMENTS CHECK LIST (SRCL)
LISTE DE VÉRIFICATION DES EXIGENCES RELATIVES À LA SÉCURITÉ (LVERS)**

PART A - CONTRACT INFORMATION / PARTIE A - INFORMATION CONTRACTUELLE		
1. Originating Government Department or Organization / Ministère ou organisme gouvernemental d'origine Health Canada		2. Branch or Directorate / Direction générale ou Direction Real Property & Security Directorate
3. a) Subcontract Number / Numéro du contrat de sous-traitance T.B.D.	3. b) Name and Address of Subcontractor / Nom et adresse du sous-traitant	
4. Brief Description of Work / Brève description du travail Supply and installation of a New Generator Tap Box and supply of temporary generator power at RPB as per attached SOW		
5. a) Will the supplier require access to Controlled Goods? Le fournisseur aura-t-il accès à des marchandises contrôlées?		<input checked="" type="checkbox"/> No / Non <input type="checkbox"/> Yes / Oui
5. b) Will the supplier require access to unclassified military technical data subject to the provisions of the Technical Data Control Regulations? Le fournisseur aura-t-il accès à des données techniques militaires non classifiées qui sont assujetties aux dispositions du Règlement sur le contrôle des données techniques?		<input checked="" type="checkbox"/> No / Non <input type="checkbox"/> Yes / Oui
6. Indicate the type of access required / Indiquer le type d'accès requis		
6. a) Will the supplier and its employees require access to PROTECTED and/or CLASSIFIED information or assets? Le fournisseur ainsi que les employés auront-ils accès à des renseignements ou à des biens PROTÉGÉS et/ou CLASSIFIÉS? (Specify the level of access using the chart in Question 7. c) (Préciser le niveau d'accès en utilisant le tableau qui se trouve à la question 7. c)		<input checked="" type="checkbox"/> No / Non <input type="checkbox"/> Yes / Oui
6. b) Will the supplier and its employees (e.g. cleaners, maintenance personnel) require access to restricted access areas? No access to PROTECTED and/or CLASSIFIED information or assets is permitted. Le fournisseur et ses employés (p. ex. nettoyeurs, personnel d'entretien) auront-ils accès à des zones d'accès restreintes? L'accès à des renseignements ou à des biens PROTÉGÉS et/ou CLASSIFIÉS n'est pas autorisé.		<input type="checkbox"/> No / Non <input checked="" type="checkbox"/> Yes / Oui
6. c) Is this a commercial courier or delivery requirement with no overnight storage? S'agit-il d'un contrat de messagerie ou de livraison commerciale sans entreposage de nuit?		<input checked="" type="checkbox"/> No / Non <input type="checkbox"/> Yes / Oui
7. a) Indicate the type of information that the supplier will be required to access / Indiquer le type d'information auquel le fournisseur devra avoir accès		
Canada <input type="checkbox"/>	NATO / OTAN <input type="checkbox"/>	Foreign / Étranger <input type="checkbox"/>
7. b) Release restrictions / Restrictions relatives à la diffusion		
No release restrictions / Aucune restriction relative à la diffusion <input type="checkbox"/>	All NATO countries / Tous les pays de l'OTAN <input type="checkbox"/>	No release restrictions / Aucune restriction relative à la diffusion <input type="checkbox"/>
Not releasable / À ne pas diffuser <input type="checkbox"/>		
Restricted to: / Limité à: <input type="checkbox"/> Specify country(ies): / Préciser le(s) pays:	Restricted to: / Limité à: <input type="checkbox"/> Specify country(ies): / Préciser le(s) pays:	Restricted to: / Limité à: <input type="checkbox"/> Specify country(ies): / Préciser le(s) pays:
7. c) Level of information / Niveau d'information		
PROTECTED A / PROTÉGÉ A <input type="checkbox"/>	NATO UNCLASSIFIED / NATO NON CLASSIFIÉ <input type="checkbox"/>	PROTECTED A / PROTÉGÉ A <input type="checkbox"/>
PROTECTED B / PROTÉGÉ B <input type="checkbox"/>	NATO RESTRICTED / NATO DIFFUSION RESTREINTE <input type="checkbox"/>	PROTECTED B / PROTÉGÉ B <input type="checkbox"/>
PROTECTED C / PROTÉGÉ C <input type="checkbox"/>	NATO CONFIDENTIAL / NATO CONFIDENTIEL <input type="checkbox"/>	PROTECTED C / PROTÉGÉ C <input type="checkbox"/>
CONFIDENTIAL / CONFIDENTIEL <input type="checkbox"/>	NATO SECRET / NATO SECRET <input type="checkbox"/>	CONFIDENTIAL / CONFIDENTIEL <input type="checkbox"/>
SECRET / SECRET <input type="checkbox"/>	COSMIC TOP SECRET / COSMIC TRÈS SECRET <input type="checkbox"/>	SECRET / SECRET <input type="checkbox"/>
TOP SECRET / TRÈS SECRET <input type="checkbox"/>		TOP SECRET / TRÈS SECRET <input type="checkbox"/>
TOP SECRET (SIGINT) / TRÈS SECRET (SIGINT) <input type="checkbox"/>		TOP SECRET (SIGINT) / TRÈS SECRET (SIGINT) <input type="checkbox"/>



Contract Number / Numéro du contrat MH- 20000
Security Classification / Classification de sécurité UNCLASSIFIED

PART A (continued) / PARTIE A (suite)

8. Will the supplier require access to PROTECTED and/or CLASSIFIED COMSEC information or assets? No Yes
Le fournisseur aura-t-il accès à des renseignements ou à des biens COMSEC désignés PROTÉGÉS et/ou CLASSIFIÉS? Non Oui

If Yes, indicate the level of sensitivity:
Dans l'affirmative, indiquer le niveau de sensibilité :

9. Will the supplier require access to extremely sensitive INFOSEC information or assets? No Yes
Le fournisseur aura-t-il accès à des renseignements ou à des biens INFOSEC de nature extrêmement délicate? Non Oui

Short Title(s) of material / Titre(s) abrégé(s) du matériel :
Document Number / Numéro du document :

PART B - PERSONNEL (SUPPLIER) / PARTIE B - PERSONNEL (FOURNISSEUR)

10. a) Personnel security screening level required / Niveau de contrôle de la sécurité du personnel requis

- | | | | |
|---|---|---|--|
| <input checked="" type="checkbox"/> RELIABILITY STATUS
COTE DE FIABILITÉ | <input type="checkbox"/> CONFIDENTIAL
CONFIDENTIEL | <input type="checkbox"/> SECRET
SECRET | <input type="checkbox"/> TOP SECRET
TRÈS SECRET |
| <input type="checkbox"/> TOP SECRET- SIGINT
TRÈS SECRET - SIGINT | <input type="checkbox"/> NATO CONFIDENTIAL
NATO CONFIDENTIEL | <input type="checkbox"/> NATO SECRET
NATO SECRET | <input type="checkbox"/> COSMIC TOP SECRET
COSMIC TRÈS SECRET |
| <input type="checkbox"/> SITE ACCESS
ACCÈS AUX EMPLACEMENTS | | | |

Special comments:

Commentaires spéciaux :

NOTE: If multiple levels of screening are identified, a Security Classification Guide must be provided.
REMARQUE : Si plusieurs niveaux de contrôle de sécurité sont requis, un guide de classification de la sécurité doit être fourni.

10. b) May unscreened personnel be used for portions of the work? No Yes
Du personnel sans autorisation sécuritaire peut-il se voir confier des parties du travail? Non Oui

If Yes, will unscreened personnel be escorted? No Yes
Dans l'affirmative, le personnel en question sera-t-il escorté? Non Oui

PART C - SAFEGUARDS (SUPPLIER) / PARTIE C - MESURES DE PROTECTION (FOURNISSEUR)

INFORMATION / ASSETS / RENSEIGNEMENTS / BIENS

11. a) Will the supplier be required to receive and store PROTECTED and/or CLASSIFIED information or assets on its site or premises? No Yes
Le fournisseur sera-t-il tenu de recevoir et d'entreposer sur place des renseignements ou des biens PROTÉGÉS et/ou CLASSIFIÉS? Non Oui

11. b) Will the supplier be required to safeguard COMSEC information or assets? No Yes
Le fournisseur sera-t-il tenu de protéger des renseignements ou des biens COMSEC? Non Oui

PRODUCTION

11. c) Will the production (manufacture, and/or repair and/or modification) of PROTECTED and/or CLASSIFIED material or equipment occur at the supplier's site or premises? No Yes
Les installations du fournisseur serviront-elles à la production (fabrication et/ou réparation et/ou modification) de matériel PROTÉGÉ et/ou CLASSIFIÉ? Non Oui

INFORMATION TECHNOLOGY (IT) MEDIA / SUPPORT RELATIF À LA TECHNOLOGIE DE L'INFORMATION (TI)

11. d) Will the supplier be required to use its IT systems to electronically process, produce or store PROTECTED and/or CLASSIFIED information or data? No Yes
Le fournisseur sera-t-il tenu d'utiliser ses propres systèmes informatiques pour traiter, produire ou stocker électroniquement des renseignements ou des données PROTÉGÉS et/ou CLASSIFIÉS? Non Oui

11. e) Will there be an electronic link between the supplier's IT systems and the government department or agency? No Yes
Disposera-t-on d'un lien électronique entre le système informatique du fournisseur et celui du ministère ou de l'agence gouvernementale? Non Oui



Contract Number / Numéro du contrat MH- 20000
Security Classification / Classification de sécurité UNCLASSIFIED

PART C - (continued) / PARTIE C - (suite)

For users completing the form manually use the summary chart below to indicate the category(ies) and level(s) of safeguarding required at the supplier's site(s) or premises.
Les utilisateurs qui remplissent le formulaire manuellement doivent utiliser le tableau récapitulatif ci-dessous pour indiquer, pour chaque catégorie, les niveaux de sauvegarde requis aux installations du fournisseur.

For users completing the form online (via the Internet), the summary chart is automatically populated by your responses to previous questions.
Dans le cas des utilisateurs qui remplissent le formulaire en ligne (par Internet), les réponses aux questions précédentes sont automatiquement saisies dans le tableau récapitulatif.

SUMMARY CHART / TABLEAU RÉCAPITULATIF

Category / Catégorie	PROTECTED / PROTÉGÉ			CLASSIFIED / CLASSIFIÉ			NATO				COMSEC						
	A	B	C	CONFIDENTIAL	SECRET	TOP SECRET	NATO RESTRICTED	NATO CONFIDENTIAL	NATO SECRET	COSMIC TOP SECRET / COSMIC TRÈS SECRET	PROTECTED / PROTÉGÉ			CONFIDENTIAL	SECRET	TOP SECRET	
				CONFIDENTIEL		TRÈS SECRET	NATO DIFFUSION RESTREINTE	NATO CONFIDENTIEL	A		B	C	CONFIDENTIEL				
Information / Assets / Renseignements / Biens / Production																	
IT Media / Support TI																	
IT Link / Lien électronique																	

12. a) Is the description of the work contained within this SRCL PROTECTED and/or CLASSIFIED?
La description du travail visé par la présente LVERS est-elle de nature PROTÉGÉE et/ou CLASSIFIÉE? No / Non Yes / Oui

If Yes, classify this form by annotating the top and bottom in the area entitled "Security Classification".
Dans l'affirmative, classifiez le présent formulaire en indiquant le niveau de sécurité dans la case intitulée « Classification de sécurité » au haut et au bas du formulaire.

12. b) Will the documentation attached to this SRCL be PROTECTED and/or CLASSIFIED?
La documentation associée à la présente LVERS sera-t-elle PROTÉGÉE et/ou CLASSIFIÉE? No / Non Yes / Oui

If Yes, classify this form by annotating the top and bottom in the area entitled "Security Classification" and indicate with attachments (e.g. SECRET with Attachments).
Dans l'affirmative, classifiez le présent formulaire en indiquant le niveau de sécurité dans la case intitulée « Classification de sécurité » au haut et au bas du formulaire et indiquez qu'il y a des pièces jointes (p. ex. SECRET avec des pièces jointes).



Government of Canada / Gouvernement du Canada

Contract Number / Numéro du contrat MH-20000
Security Classification / Classification de sécurité UNCLASSIFIED

PART D - AUTHORIZATION / PARTIE D - AUTORISATION

13. Organization Project Authority / Chargé de projet de l'organisme

Name (print) - Nom (en lettres moulées) Mike Haerkens	Title - Titre Senior Project Manager	Signature
--	---	---------------

Telephone No. - N° de téléphone 613-882-6915	Facsimile No. - N° de télécopieur N/A	E-mail address - Adresse courriel michael.haerkens@canada.ca	Date 2019-12-12
---	--	---	--------------------

14. Organization Security Authority / Responsable de la sécurité de l'organisme

Name (print) - Nom (en lettres moulées) Sonia Larose	Title - Titre Security in contracting	Signature
---	--	---------------

Telephone No. - N° de téléphone 613-954-1775	Facsimile No. - N° de télécopieur	E-mail address - Adresse courriel sonia.larose@canada.ca	Date 2019-12-12
---	-----------------------------------	---	--------------------

15. Are there additional instructions (e.g. Security Guide, Security Classification Guide) attached?
Des instructions supplémentaires (p. ex. Guide de sécurité, Guide de classification de la sécurité) sont-elles jointes?

No / Non Yes / Oui

16. Procurement Officer / Agent d'approvisionnement

Name (print) - Nom (en lettres moulées) Diana Seguin	Title - Titre Sr. Procurement Officer	Signature
---	--	---------------

Telephone No. - N° de téléphone 613-941-2103	Facsimile No. - N° de télécopieur	E-mail address - Adresse courriel diana.seguin@canada.ca	Date 2020-01-02
---	-----------------------------------	---	--------------------

17. Contracting Security Authority / Autorité contractante en matière de sécurité

Name (print) - Nom (en lettres moulées) Sonia Larose	Title - Titre Security in Contracting	Signature
---	--	---------------

Telephone No. - N° de téléphone 613-954-1775	Facsimile No. - N° de télécopieur	E-mail address - Adresse courriel sonia.larose@canada.ca	Date 2019-12-12
---	-----------------------------------	---	--------------------

ANNEX D

CERTIFICATE OF INSURANCE

MINIMUM INSURANCE REQUIREMENTS:

- Commercial General Liability
- Builder's Risk/Installation Floater

The Bidder must provide a copy of a certificate from an insurance broker or an insurance company licensed to operate in Canada stating that the Bidder, if awarded a contract as a result of the ITT, can be insured in accordance with the Commercial General Liability Insurance requirements specified in (Insurance Conditions) as indicated in the ITT, in the amount of \$2,000,000.00.

Please refer to the following link for an example of information required:

<https://www.tpsgc-pwgsc.gc.ca/app-acq/forms/357-eng.html>

ANNEX E

CONDITIONS PRECEDENT TO CONTRACT AWARD

It is recommended that bidders provide as much of the following information as possible with their bid. All of the following information will be required prior to contract award unless specified otherwise.

- C1 - The Bidder must provide proof of all employees' WHIMS certification.
- C2 - The Bidder must provide proof e.g. letter/certificate and number demonstrating they are in good standing with WSIB (Workmen's Compensation) and covered for the duration of the project.
- C3 - The Bidder must provide a copy of their Health and Safety Policy and Program and site specific safety plan for the Proposed work prior to contract award.
- C4 - The Bidder must provide a copy of their Health and Safety Plan for the proposed construction work within one work week from date of contract award.
- C5 - The Bidder must provide a copy of a certificate from an insurance broker or an insurance company licensed to operate in Canada stating that the Bidder, if awarded a contract as a result of the ITT, can be insured in accordance with the Commercial General Liability Insurance requirements specified in (Insurance Conditions) as indicated in the ITT, in the amount of \$2,000,000.00.

ANNEX F

LISTING OF SUBCONTRACTORS

- 1) In accordance with GI06 – Listing of Subcontractors and Suppliers of R2410T- General Instructions - Construction Services GI07 - Listing of Subcontractors and Suppliers of R2710T- General Instructions - Construction Services - Bid Security Requirements, the Bidder should provide a list of Subcontractors with his Bid.
- 2) The Bidder must submit the list of Subcontractors and for any portion of the Work valued at 20% or greater of the submitted Bid Price.

	Subcontractor	Division	Estimated value of work
1			
2			
3			
4			
5			
6			
7			
8			
9			
10			
11			
12			
13			
14			
15			