



إكسبو 2020 EXPO 2020
دبي، الإمارات العربية المتحدة
DUBAI, UNITED ARAB EMIRATES

EXPO 2020 DUBAI
PERFORMANCE SPACES
AL FORSAN MULTIPURPOSE AREA

DESCRIPTION

The Production and Delivery Team will provide technical support to this programmable performance space. The technical equipment, installed for the event or performance, is scalable in size in order to accommodate a wide range of creative performances, throughout the day and evening entertainment.



LOCATION



Located in the North West area of the Expo 2020 site, this performance space has very close access to:

- Al Forsan Amphitheatre
- Public Realm
- UAE Pavilion
- Al Forsan Fire Pit
- International Pavilions

CAPACITIES

Programmable space	3,560sqm
--------------------	----------

PROGRAMMING INTENT

The Al Forsan Multipurpose Area is an open park setting for musical entertainment, performing arts, sporting/exercise events and audience engagement activities.

TECHNICAL PROVISION

Performers will have exclusive access to the latest AV and staging equipment on the market and will have a team of dedicated operators to provide technical support.



إكسبو 2020 EXPO 2020
دبي، الإمارات العربية المتحدة
DUBAI, UNITED ARAB EMIRATES

EXPO 2020 DUBAI
PERFORMANCE SPACES
ALIF PAVILION
The Bowl

DESCRIPTION

The Production and Delivery Team will provide technical support to this programmable performance space. The technical equipment, installed for the event or performance, is scalable in size in order to accommodate a wide range of creative performances, throughout the day and evening entertainment.



LOCATION



Located in the South West area of the Expo2020 site and Western tip of the Alif Pavilion, this performance space has very close access to:

- Mobility District
- Mobility District Stage
- Public Realm
- Alif Pavilion
- Jubilee Park

CAPACITIES

Performance area	315 sqm
Audience	Seated 560

PROGRAMMING INTENT

The Bowl is an engaged setting for solo performances, product activations, spoken word recitals and audience engagement activities.

TECHNICAL PROVISION

Performers will have exclusive access to the latest AV equipment on the market and will have a team of dedicated operators to provide technical support.



إكسبو 2020 EXPO 2020
دبي، الإمارات العربية المتحدة
DUBAI, UNITED ARAB EMIRATES

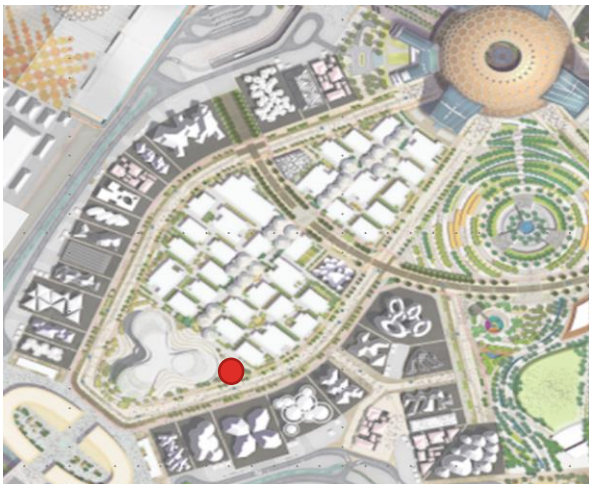
EXPO 2020 DUBAI
PERFORMANCE SPACES
ALIF PAVILION
The Stage

DESCRIPTION

The Production and Delivery Team will provide technical support to this programmable performance space. The technical equipment, installed for the event or performance, is scalable in size in order to accommodate a wide range of creative performances, throughout the day and evening entertainment.



LOCATION



Located in the South West area of the Expo2020 site and Eastern tip of the Alif Pavilion, this performance space has very close access to:

- Mobility District
- Mobility District Stage
- Public Realm
- Alif Pavilion
- Jubilee Park

CAPACITIES

Performer Area	170 sqm
Audience Area	230 sqm

PROGRAMMING INTENT

The Stage is a podium setting for presentations, awards, activations, spoken word recitals and audience engagement activities.

TECHNICAL PROVISION

Performers will have exclusive access to the latest AV equipment on the market and will have a team of dedicated operators to provide technical support.



إكسبو 2020 EXPO 2020
دبي، الإمارات العربية المتحدة
DUBAI, UNITED ARAB EMIRATES

EXPO 2020 DUBAI
PERFORMANCE SPACES
ALIF PAVILION
The Tracks

DESCRIPTION

The Production and Delivery Team will provide technical support to this programmable performance space. The technical equipment, installed for the event or performance, is scalable in size in order to accommodate a wide range of creative performances, throughout the day and evening entertainment.



LOCATION



Located in the South West area of the Expo2020 site and Northern tip of the Alif Pavilion, this performance space has very close access to:

- Mobility District
- Mobility District Stage
- Public Realm
- Alif Pavilion
- Jubilee Park

CAPACITIES

Small Circuit Area	255 sqm
Medium Circuit Area	705 sqm

PROGRAMMING INTENT

The Tracks is a circuit setting for small scale product activations, spoken word recitals and audience engagement activities.

TECHNICAL PROVISION

Performers will have exclusive access to the latest AV equipment on the market and will have a team of dedicated operators to provide technical support.



إكسبو 2020 EXPO 2020
دبي، الإمارات العربية المتحدة
DUBAI, UNITED ARAB EMIRATES

EXPO 2020 DUBAI

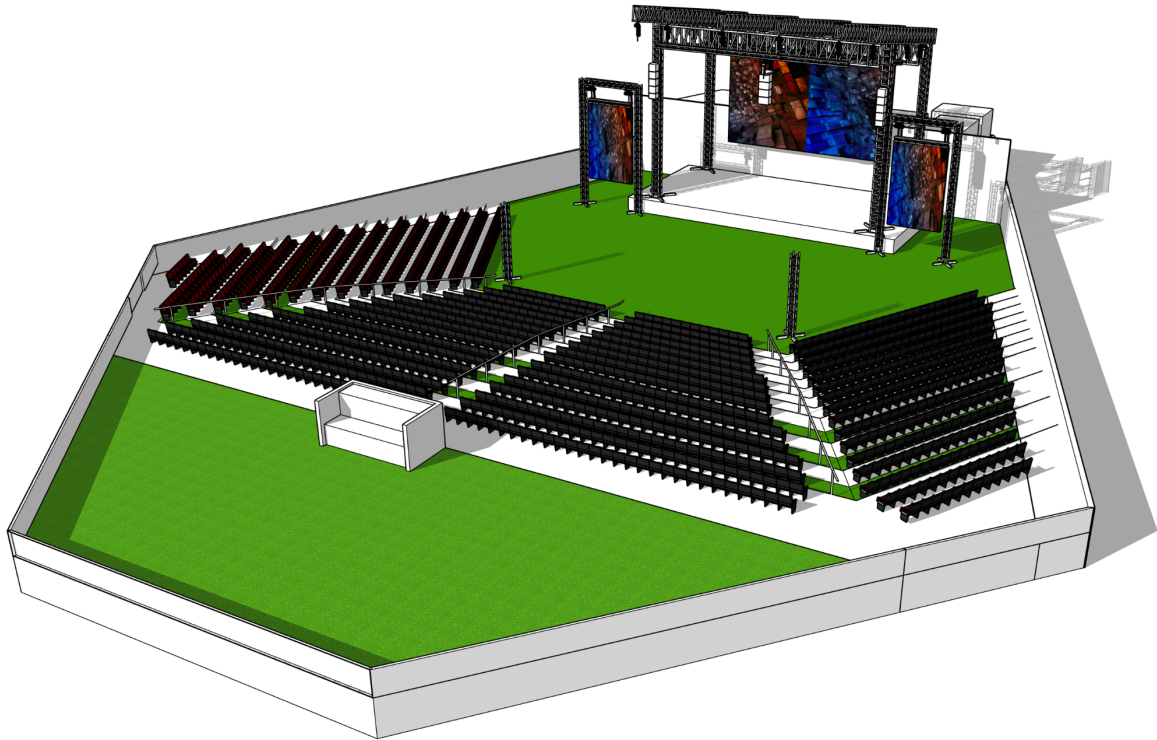
PERFORMANCE VENUE DETAILS

DUBAI MILLENNIUM AMPHITHEATRE
AL FORSAN PARK

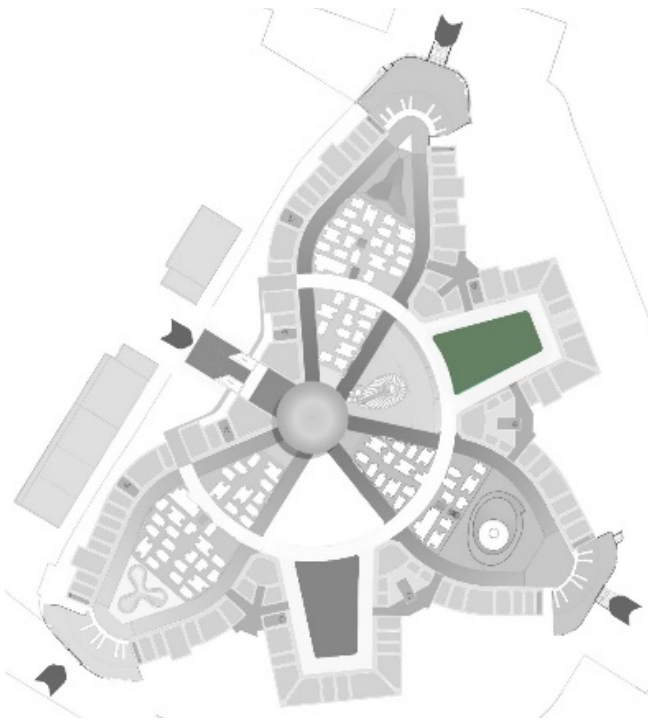
DUBAI MILLENNIUM AMPHITHEATRE (AL FORSAN PARK)

Located in the Al Forsan Park, this Amphitheatre is a venue for cultural programming, musical performances and performing arts.

The Amphitheatre is a hub for cultural entertainment displays at the Expo site and can also cater to an exclusive audience. Seating layouts are adaptable, and can be removed to create a park environment.



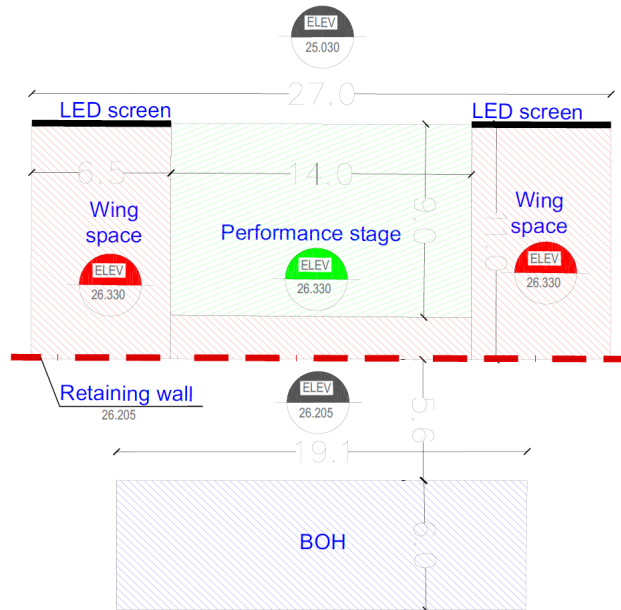
VIEW – TECHNICAL SPECIFICATION



Note – conceptual illustration – not showing scenery, backdrops or stage covering to be installed. Seating layout shown is option only.

LOCATION

PLAN VIEW



CAPACITIES

Performers on Stage	1 – 20+
Expo2020 Production Crew	20
Audience	Seated Up to 2,500 Standing Up to 4,000

PERFORMANCE STAGE DIMENSIONS

Width	14m
Depth	9m
Stage Performance Area	126sqm

STAGE DETAILS

Stage Structure	Permanent	Covering	Yes
Type	Rectangular	Location	Outdoor
Format	Modular	Flexibility	Thrust, extension, catwalk, dance floor
Stage Load	500kg/m ²	Power	2000A TPN
Truss Capacity	12m x 5 at 3000kg SWL	Technical Support Area	Behind stage

POWER

Production Lighting	Minimum Breaker Size TPN	Connected Load (kW)	Phase (+N & E)	Voltage TPN
Stage Left	400A	260	3	380
Stage Right	400A	260	3	380
Behind Stage, Centre	400A	260	3	380
Production AV				
Behind Stage, Centre	300A	96	3	380
Production Sound (Isolated Earth)				
Stage Left	125A	76	3	380
Stage Right	125A	76	3	380

Production Lighting

Show Control	<ul style="list-style-type: none"> - Large lighting desk with laptop and monitors - Remote Device Management system - DMX signaling control
Fixtures	<ul style="list-style-type: none"> - 20 x moving head beam lights - 20 x LED moving head wash lights
NB: Fixtures consist of moving heads, static and followspots. The layout will be a combination of rigged and floor packages	<ul style="list-style-type: none"> - 16 x LED moving head profile small zoom lights - 12 x LED moving head profile large zoom lights - 28 x moving head beam lights with dynamic effects - 24 x moving head beam lights with dynamic effects - 12 x LED moving head beam lights - 10 x LED wash wall lights - 10 x LED strobe lights - 10 x static blinders - 4 x followspot

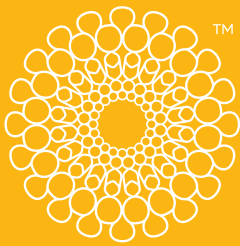
Production Sound, Backline and Communications

PA	<ul style="list-style-type: none"> - Loudspeaker arrays - Centre flown sub - Ground stacked sub - Front and side fills - Amplifiers
Mixing	<ul style="list-style-type: none"> - Digital mixing desk for PA - Digital mixing desk for monitors - Laptops and monitor screens - I/O racks - Playback and record - Network monitoring system - Spectrum management system
Monitors	<ul style="list-style-type: none"> - Wireless In-Ear monitoring system - Speaker monitors - Amplifiers
Microphones – vocal	<ul style="list-style-type: none"> - 12 x wireless dynamic vocal microphones - 12 x wired dynamic vocal microphones - 4 x hyper cardioid vocal microphones - 8 x lavalier microphones - 10 x hanging choir microphones - 4 x lectern super cardioid vocal microphones - Tall microphone stands - Short microphone stands
Microphones – instrumental	<ul style="list-style-type: none"> - 12 x hyper dynamic microphones - 4 x compact microphones - 1 x percussion microphone pack - 10 x clip-on microphones
Microphones – Orchestral	<ul style="list-style-type: none"> - 4 x Orchestral Microphone - Omni - 4 x Orchestral Microphone – Clip-on cardioid - 20 x Orchestral Microphone – Hyper cardioid - 2 x Orchestral Microphone Subminiature - Omni - 2 x Orchestral Microphone Subminiature - Cardioid - 4 x Orchestral Microphone Sub-miniature - Sub Cardioid - 4 x Orchestral Microphone Sub-miniature - Open Cardioid - 6 x Orchestral Microphone Subminiature - Super Cardioid - 4 x Orchestral Microphone - Large Diaphragm Cardioid - 4 x Orchestral Microphone - Figure 8 Ribbon
Backline	<ul style="list-style-type: none"> - 2 x 5-piece drum kit w/22" Kick - 2 x Hardware Pack Kick, Snare, Hi Hat, - 4 x Boom Stands, Throne - 2 x Drum Carpet

	<ul style="list-style-type: none"> - 2 x 14" K Master Sound Hi Hats - 2 x 10" K Custom Dark Splash - 2 x 18" K Dark Medium Thin Crash - 2 x 19" K Custom Dark Crash - 2 x 18" K EFX Crash - 2 x 22" K Ride - 4 x Stage piano weighted 88 keys - 2 x Stage keyboard - 2 x 300w Bass Head - 2 x Speaker Cabinet - 2 x 500w Dual Channel Bass Head - 2 x Amplifier 1x12" - 2 x Amplifier 2x12" - Vox AC30 C2X 2x12" - 2 x DJ CDJ - 2 x DJM Mixer
Communications, wireless	<ul style="list-style-type: none"> - Multichannel wireless communication system - Wireless belt packs - Wired headsets

Visual Imaging

LED Screens	<ul style="list-style-type: none"> - 6mm pitch LED panels - Portrait orientation - stage left LED screen - Portrait orientation - stage right LED screen - Portrait orientation – upstage LED screen
Camera	<ul style="list-style-type: none"> - 2 x HD quality RF camera - Short capture lens
Media Servers	<ul style="list-style-type: none"> - 1 x DVI media server
Vision mixing	<ul style="list-style-type: none"> - Monitor screens - Switching system



إكسبو 2020 EXPO 2020
دبي، الإمارات العربية المتحدة
DUBAI, UNITED ARAB EMIRATES

EXPO 2020 DUBAI

PERFORMANCE VENUE DETAILS

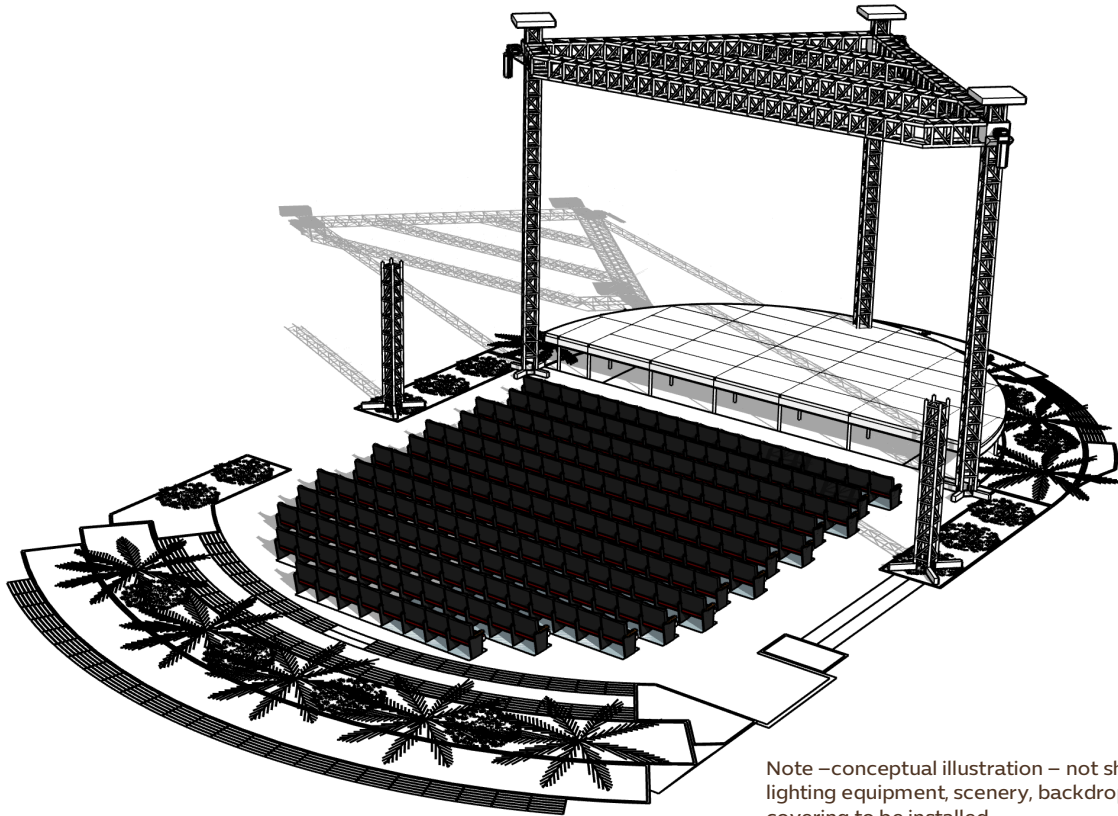
EARTH STAGE

(SUSTAINABILITY DISTRICT)

EARTH STAGE (SUSTAINABILITY DISTRICT STAGE)

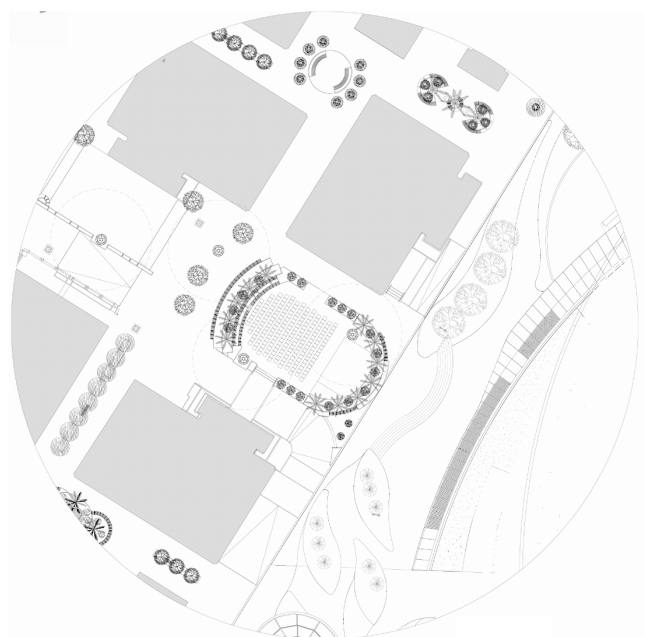
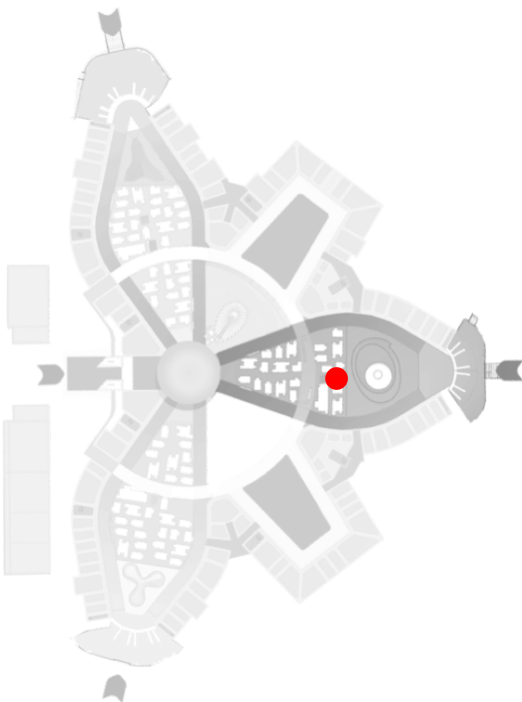
Located in the heart of the Sustainability District, this district stage can host events promoting participants outside their Pavilion, including dance, music, theatre, children's entertainment, cinema, poetry, talks, lectures, comedy and street theatre.

VIEW – TECHNICAL SPECIFICATION

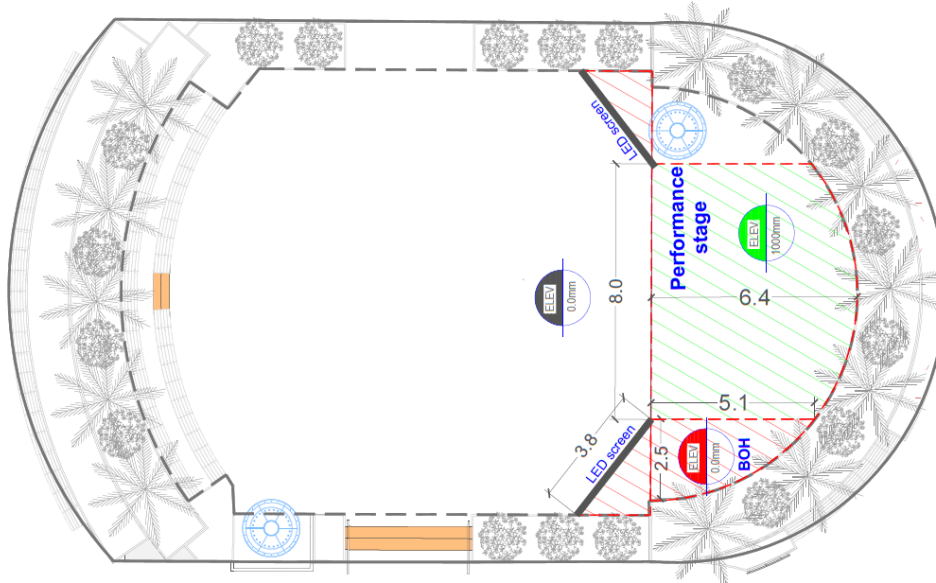


Note –conceptual illustration – not showing AV and lighting equipment, scenery, backdrops or stage covering to be installed.

LOCATION



PLAN VIEW



CAPACITIES

Performers on Stage	1 - 19
Expo2020 Production Crew	6
Audience	Seated 210 Standing 330

PERFORMANCE STAGE DIMENSIONS

Width	8m
Depth	5m
Stage Performance Area	40sqm
Wing Area	Left and right – 8sqm

STAGE DETAILS

Stage Structure	Permanent	Covering	Yes
Type	Semi-circle	Location	Outdoor
Format	Modular	Flexibility	Thrust, extension, catwalk, dance floor
Stage Load	600kg/m ²	Power	200A TPN
Truss Capacity	70kg/m SWL	Technical Support Area	Main Technical Compound

POWER

Production Lighting	Minimum Breaker Size TPN	Connected Load (kW)	Phase (+N & E)	Voltage TPN
Under stage	63A	16	3	380
Production Sound (Isolated Earth)				
Under stage	32A	10	3	380
Production Video				
Under stage	32A	30	3	380

Production Lighting

Show Control	<ul style="list-style-type: none"> - Small lighting desk with laptop - Remote Device Management system - DMX signaling control
Fixtures	<ul style="list-style-type: none"> - 8 x LED moving head wash lights - 8 x LED moving head beam lights - 8 x LED moving head beam lights - 4 x static blinders

Production Sound and Communications

FOH Console, PA and monitors	<ul style="list-style-type: none"> - Digital mixing console - Active PA system, ground stacked - Active monitor speaker system - Wireless In-Ear monitoring system
Microphones	<ul style="list-style-type: none"> - 4 x wireless dynamic microphones - 4 x wired dynamic microphones - 1 x percussion microphone pack - 4 x lavalier microphones - 10 x clip-on microphones - 4 x hanging choir microphones - Tall microphone stands - Short microphone stands
Communications, wireless	<ul style="list-style-type: none"> - Multichannel wireless communication system - Wireless belt packs - Wired headsets

Visual Imaging

LED Screens	<ul style="list-style-type: none"> - 6mm pitch LED panels - Portrait orientation - stage left LED screen - Portrait orientation - stage right LED screen - Portrait orientation – upstage LED screen
Camera	<ul style="list-style-type: none"> - 2 x HD quality RF camera - Short capture lens
Media Servers	<ul style="list-style-type: none"> - 1 x DVI media server
Vision mixing	<ul style="list-style-type: none"> - Monitor screens - Switching system



إكسبو 2020 EXPO 2020
دبي، الإمارات العربية المتحدة
DUBAI, UNITED ARAB EMIRATES

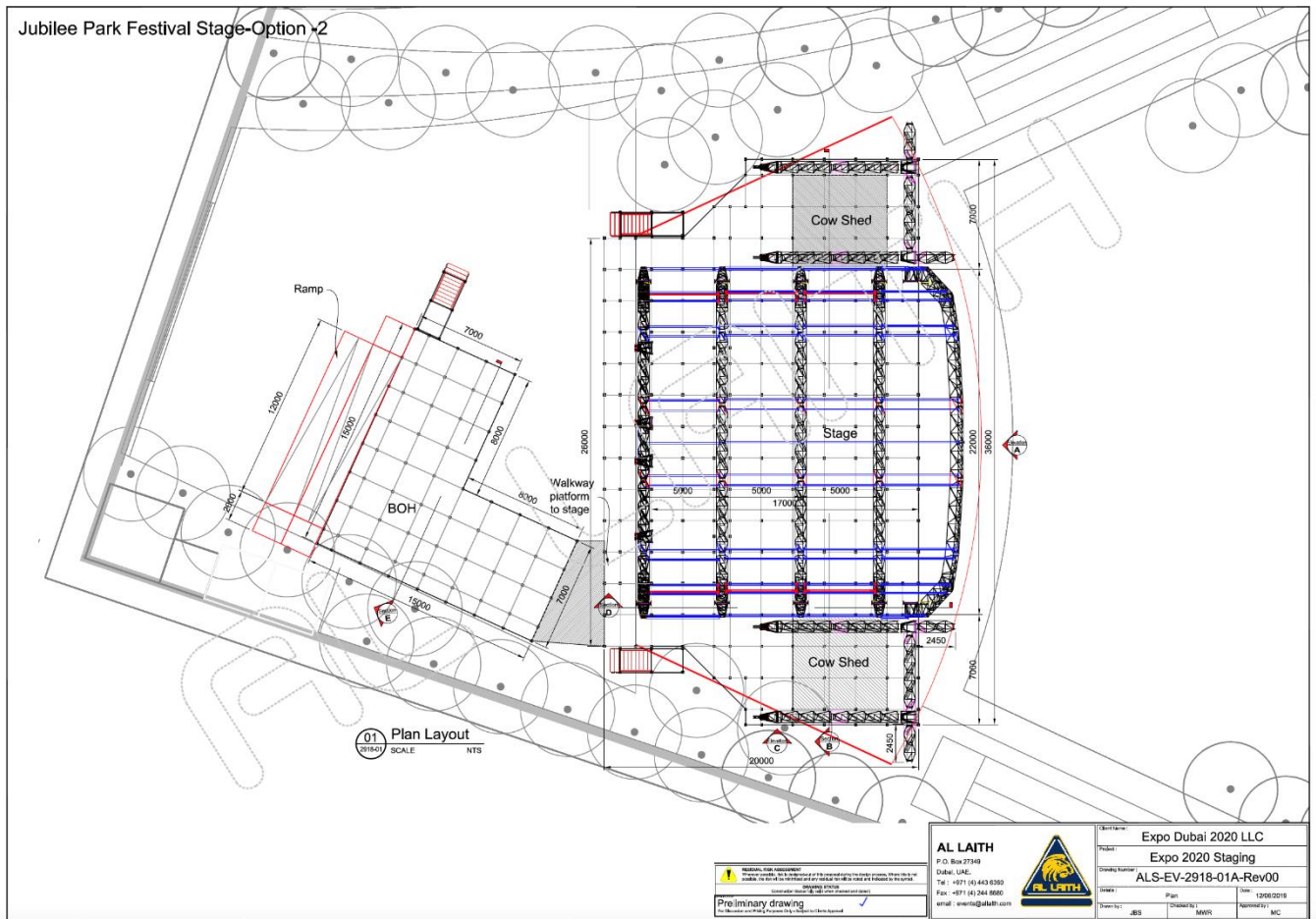
EXPO 2020 DUBAI

PERFORMANCE VENUE DETAILS

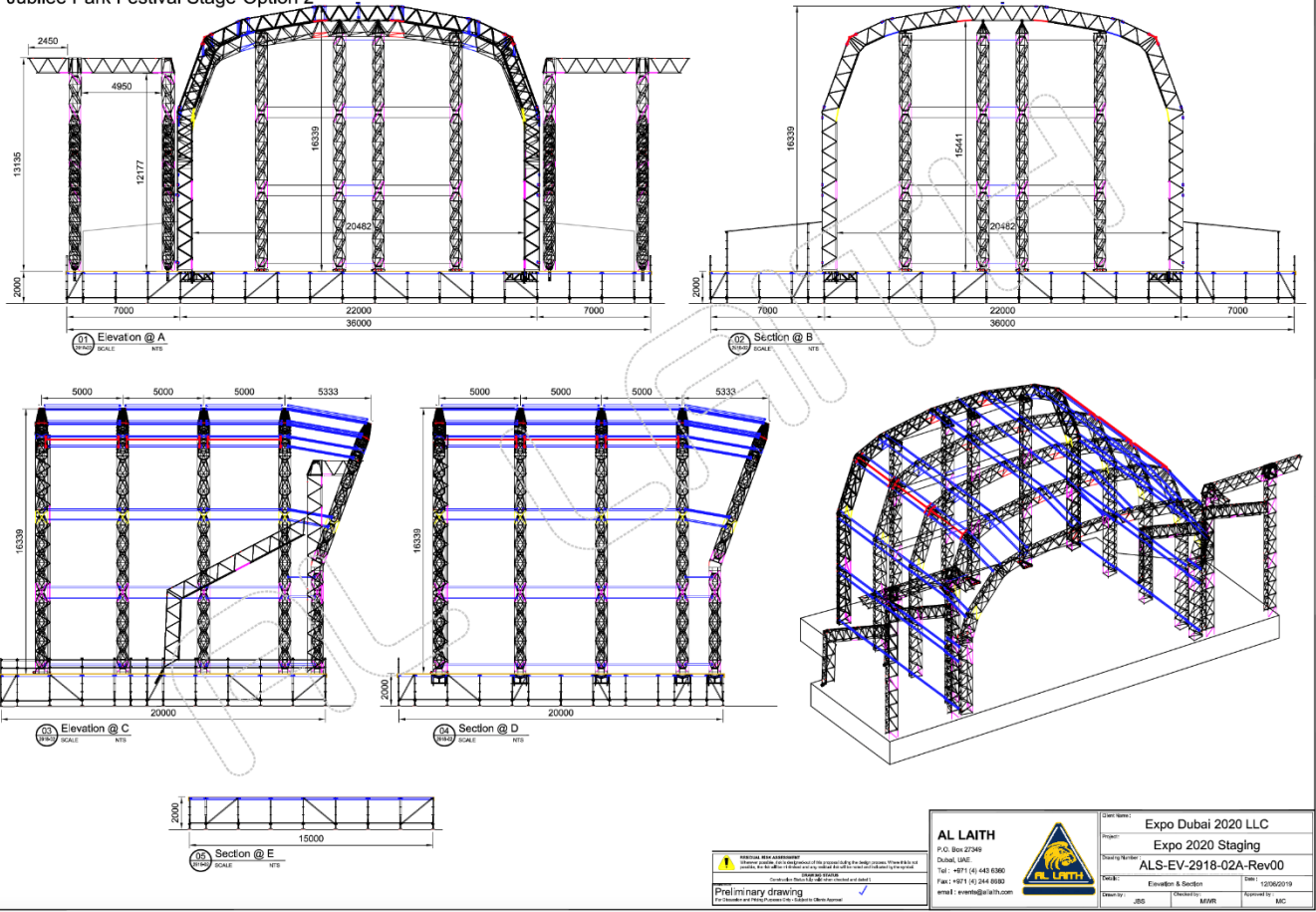
JUBILEE STAGE

JUBILEE STAGE

Located in the Jubilee Park, this open-air festival stage is the largest performance venue in the Expo2020 site, and is home to large scale live concerts, music and entertainment festivals and performances.



Jubilee Park Festival Stage-Option 2



PRELIMINARY DRAWING
 This drawing is for information only. It is not to be used for construction or for any other purpose without the written consent of the Engineer.
 Drawn by: [Signature]
 Checked by: [Signature]
 Date: 02/03/2019

Preliminary drawing
 For Reference and Information Only - Not for Construction

AL LAITH
 P.O. Box 2748
 Dubai, UAE
 Tel: +971 (0) 443 6360
 Fax: +971 (0) 284 6360
 email: a.laith@al-laith.com



Client Name:	Expo Dubai 2020 LLC
Project:	Expo 2020 Staging
Drawing Number:	ALS-EV-2918-02A-Rev00
Disc:	Elevation & Section
Drawn by:	[Signature]
Checked by:	[Signature]
Date:	02/03/2019
Scale:	1:100
Author:	MS
Reviewer:	MS

CAPACITIES

Expo2020 Production Crew	20			
Audience	Seated	Up to 7,500	Standing	Up to 15,000

STAGE DIMENSIONS

Width	20m
Depth	14m
Stage Performance Area	280sqm

STAGE DETAILS

Stage Structure	Permanent	Covering	Yes
Type	Rectangular	Location	Outdoor
Format	Modular	Flexibility	Thrust, extension, catwalk, dance floor
Stage Load	500kg/m ²	Power	2000A TPN
Truss Capacity	12m x 5 at 3000kg SWL	Technical Support Area	Behind stage

POWER

Production Lighting	Minimum Breaker Size TPN	Connected Load (kW)	Phase (+N & E)	Voltage TPN
Stage Left	400A	260	3	380
Stage Right	400A	260	3	380
Behind Stage, Centre	400A	260	3	380
Production AV				
Behind Stage, Centre	300A	96	3	380
Production Sound (Isolated Earth)				
Stage Left	125A	76	3	380
Stage Right	125A	76	3	380

Production Lighting

Show Control	<ul style="list-style-type: none"> - Large lighting desk with laptop and monitors - Remote Device Management system - DMX signaling control
Fixtures	<ul style="list-style-type: none"> - 24 x moving head beam lights - 24x LED moving head wash lights
NB: Fixtures consist of moving heads, static and followspots. The layout will be a combination of rigged and floor packages	<ul style="list-style-type: none"> - 12 x LED moving head profile small zoom lights - 12 x LED moving head profile large zoom lights - 36 x moving head beam lights with dynamic effects - 32 x moving head beam lights with dynamic effects - 24 x LED moving head beam lights - 8 x LED wash wall lights - 10 x LED strobe lights - 30 x static blinders - 4 x followspots

Production Sound, Backline and Communications

PA	<ul style="list-style-type: none"> - Loudspeaker arrays - Centre flown sub - Ground stacked sub - Front and side fills - Amplifiers
Mixing	<ul style="list-style-type: none"> - Digital mixing desk for PA - Digital mixing desk for monitors - Laptops and monitor screens - I/O racks - Playback and record - Network monitoring system - Spectrum management system
Monitors	<ul style="list-style-type: none"> - Wireless In-Ear monitoring system - Speaker monitors - Amplifiers
Microphones – vocal	<ul style="list-style-type: none"> - 12 x wireless dynamic vocal microphones - 12 x wired dynamic vocal microphones - 4 x hyper cardioid vocal microphones - 8 x lavalier microphones - 10 x hanging choir microphones - 4 x lectern super cardioid vocal microphones - Tall microphone stands - Short microphone stands
Microphones – instrumental	<ul style="list-style-type: none"> - 12 x hyper dynamic microphones - 4 x compact microphones - 1 x percussion microphone pack - 10 x clip-on microphones
Microphones – Orchestral	<ul style="list-style-type: none"> - 4 x Orchestral Microphone - Omni - 4 x Orchestral Microphone – Clip-on cardioid - 20 x Orchestral Microphone – Hyper cardioid - 2 x Orchestral Microphone Subminiature - Omni - 2 x Orchestral Microphone Subminiature - Cardioid - 4 x Orchestral Microphone Sub-miniature - Sub Cardioid - 4 x Orchestral Microphone Sub-miniature - Open Cardioid - 6 x Orchestral Microphone Subminiature - Super Cardioid - 4 x Orchestral Microphone - Large Diaphragm Cardioid - 4 x Orchestral Microphone - Figure 8 Ribbon
Backline	<ul style="list-style-type: none"> - 2 x 5 piece drum kit w/22" Kick - - 2 x Hardware Pack Kick, Snare, Hi Hat, 4x Boom Stands, Throne - 2 x Drum Carpet - 2 x 14" K Master Sound Hi Hats - 2 x 10" K Custom Dark Splash - 2 x 18" K Dark Medium Thin Crash

	<ul style="list-style-type: none"> - 2 x 19" K Custom Dark Crash - 2 x 18" K EFX Crash - 2 x 22" K Ride - 4 x Stage piano weighted 88 keys - 2 x Stage keyboard - 2 x 300w Bass Head - 2 x Speaker Cabinet - 2 x 500w Dual Channel Bass Head - 2 x Amplifier 1x12" - 2 x Amplifier 2x12" - Vox AC30 C2X 2x12" - 2 x DJ CDJ - 2 x DJM Mixer
Communications, wireless	<ul style="list-style-type: none"> - Multichannel wireless communication system - Wireless belt packs - Wired headsets

Visual Imaging

LED Screens	<ul style="list-style-type: none"> - 6mm pitch LED panels - Portrait orientation - stage left LED screen - Portrait orientation - stage right LED screen - Landscape orientation – upstage LED screen
Camera	<ul style="list-style-type: none"> - 2 x HD quality RF camera - Short capture lens
Media Servers	<ul style="list-style-type: none"> - 1 x DVI media server
Vision mixing	<ul style="list-style-type: none"> - Monitor screens - Switching system



إكسبو 2020 EXPO 2020
دبي، الإمارات العربية المتحدة
DUBAI, UNITED ARAB EMIRATES

EXPO 2020 DUBAI

PERFORMANCE SPACES

MISSION POSSIBLE PAVILION

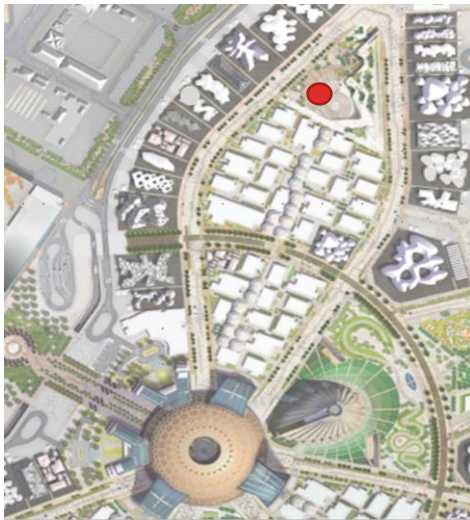
Opportunity Co-Create

DESCRIPTION

The Production and Delivery Team will provide technical support to this programmable performance space. The technical equipment, installed for the event or performance, is scalable in size in order to accommodate a wide range of performances types, throughout the day and evening entertainment.



LOCATION



Located in the North of the Expo 2020 site, this performance space has very close access to:

- Mission Possible Pavilion
- Opportunity District
- Public Realm
- Opportunity District Stage
- International Pavilions

CAPACITIES

Max Audience Capacity

135

PROGRAMMING INTENT

The Mission Possible Pavilion Opportunity Co-Create is an indoor controlled setting for small workshops, presentations and demonstrations.

TECHNICAL PROVISION

Participants will have exclusive access to the latest AV and staging equipment on the market and will have a team of dedicated operators who shall provide technical support.



إكسبو 2020 EXPO 2020
دبي، الإمارات العربية المتحدة
DUBAI, UNITED ARAB EMIRATES

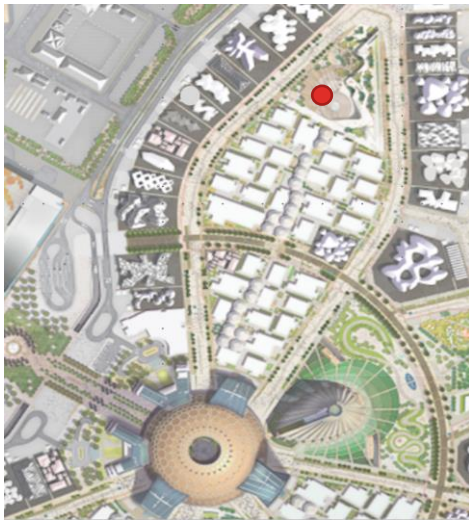
EXPO 2020 DUBAI
PERFORMANCE SPACES
MISSION POSSIBLE PAVILION
Opportunity Forum

DESCRIPTION

The Production and Delivery Team will provide technical support to this programmable performance space. The technical equipment, installed for the event or performance, is scalable in size in order to accommodate a wide range of creative performances, throughout the day and evening entertainment.



LOCATION



Located in the North of the Expo 2020 site, this performance space has very close access to:

- Mission Possible Pavilion
- Mission Possible Pavilion Opportunity Co-Create Space
- Opportunity District
- Public Realm
- Opportunity District Stage
- International Pavilions

CAPACITIES

Performers	10
Audience	100

PROGRAMMING INTENT

The Mission Possible Pavilion Forum is a shaded setting for musical ensemble, theatrical performance and audience engagement activities.

TECHNICAL PROVISION

Performers will have exclusive access to the latest AV and staging equipment on the market and will have a team of dedicated operators who shall provide technical support.



EXPO 2020 إكسبو 2020
دبي، الإمارات العربية المتحدة
DUBAI, UNITED ARAB EMIRATES

EXPO 2020 DUBAI
PERFORMANCE SPACE DETAILS
FAST ACTIVATION KIT

THE CAMPFIRE

The Campfire is a relaxing setting that is tailored for solo musical performances, spoken word recitals, story-telling and audience engagement.

Located in the Al Forsan Park, this performance space has very close access to:

- Al Forsan Crescent Multipurpose Area
- Dubai Millennium Amphitheatre
- The UAE Pavilion
- International Pavilions

AL FORSAN CRESCENT MULTI-PURPOSE AREA

The Al Forsan Crescent Area is an open park setting for musical entertainment, performing arts, sporting/exercise events and audience engagement activities.

Located in the North West area of the Expo 2020 site, this performance space has very close access to:

- Dubai Millennium Amphitheatre
- The UAE Pavilion
- The Campfire
- International pavilions

MOBILITY PAVILION – THE BOWL

The Bowl Amphitheatre is an engaged setting for solo performances, product activations, spoken word recitals and audience engagement activities.

Located in the South West area of the Expo2020 site and Western tip of the Mobility Pavilion, this performance space has very close access to:

- Mobility District
- Sea Stage (Mobility District)
- Mobility Pavilion
- Jubilee Park

MOBILITY PAVILION – THE STAGE

The Stage is a podium setting for presentations, awards, activations, spoken word recitals and audience engagement activities.

Located in the South West area of the Expo2020 site and Eastern tip of the Mobility Pavilion, this performance space has very close access to:

- Mobility District
- Sea Stage (Mobility District)
- Mobility Pavilion
- Jubilee Park

MOBILITY PAVILION – THE TRACK

The Track is a circuit setting for small scale product activations, spoken word recitals and audience engagement activities.

Located in the South West area of the Expo2020 site and Northern tip of the Mobility Pavilion, this performance space has very close access to:

- Mobility District
- Sea Stage (Mobility District)
- Public Realm
- Mobility Pavilion
- Jubilee Park

OPPORTUNITY PAVILION – AMPHITHEATRE

The Opportunity Pavilion Amphitheatre is a shaded setting for musical ensemble, theatrical performance and audience engagement activities.

Located in the North of the Expo 2020 site, this performance space has very close access to:

- Opportunity Pavilion
- Opportunity Pavilion Co-Creation Space
- Opportunity District
- Sun Stage (Opportunity District)
- International Pavilions

OPPORTUNITY PAVILION – CO-CREATION SPACE

The Opportunity Pavilion Co-Creation Space is an indoor controlled setting for small workshops, presentations and demonstrations.

Located in the North of the Expo 2020 site, this performance space has very close access to:

- Opportunity Pavilion
- Opportunity Pavilion Co-Creation Space
- Opportunity District
- Sun Stage (Opportunity District)
- International Pavilions

SUSTAINABILITY PAVILION – NORTH PERFORMANCE HUB

The North Performance Hub is an attractive setting for cultural music, street performing arts, spoken word recitals and audience engagement activities.

Located in the North West area of the Sustainability Pavilion plot, this performance space has very close access to:

- Sustainability District
- Sustainability Pavilion
- Earth Stage (Sustainability District)

SUSTAINABILITY PAVILION – SOUTH PERFORMANCE HUB

The South Performance Hub is an attractive setting for cultural music, street performing arts, spoken word recitals and audience engagement activities.

Located in the South West area of the Sustainability Pavilion plot, this performance space has very close access to:

- Sustainability District
- Sustainability Pavilion
- Earth Stage (Sustainability Pavilion)

CAPACITIES AND PROGRAMABLE SPACE

Area	Name of Venue	Capacity
Al Forsan	The Campfire	150 people
Al Forsan	Al Forsan Crescent	3,560sqm
Mobility Pavilion	The Bowl	560 people
Mobility Pavilion	The Stage	230 people
Mobility Pavilion	The Track	255sqm - small 705sqm - large
Opportunity Pavilion	Amphitheatre	100 people
Opportunity Pavilion	Co-creation Space	135 people
Sustainability Pavilion	North Performance Hub	150 people
Sustainability Pavilion	South Performance Hub	150 people
Sustainability District	Group Interaction Space	120 people

Production Lighting

Show Control	<ul style="list-style-type: none"> - Small lighting desk with laptop - Remote Device Management system - Wireless DMX signaling control
Fixtures	<ul style="list-style-type: none"> - 10 x moving head beam lights - 12 x LED moving head beam lights - 10 x static blinder lights - 80 x small LED battery powered RGB lights - 50 x medium LED battery powered RGB lights - 60 x large LED battery powered RGB lights - 40 x wash filters - 20 x Flood filters

Production Sound

PA	<ul style="list-style-type: none"> - 28 x portable battery powered active speakers - 8 x portable active speakers - 8 x portable active sub-woofer
Mixing	<ul style="list-style-type: none"> - Digital mixing desk - Laptops
Microphones	<ul style="list-style-type: none"> - 28 x wireless dynamic microphones - 16 x wired dynamic microphones - 14 x clip-on microphones - 14 x hanging choir microphones - Tall microphone stands - Short microphone stands



إكسبو 2020 EXPO 2020
دبي، الإمارات العربية المتحدة
DUBAI, UNITED ARAB EMIRATES

EXPO 2020 DUBAI

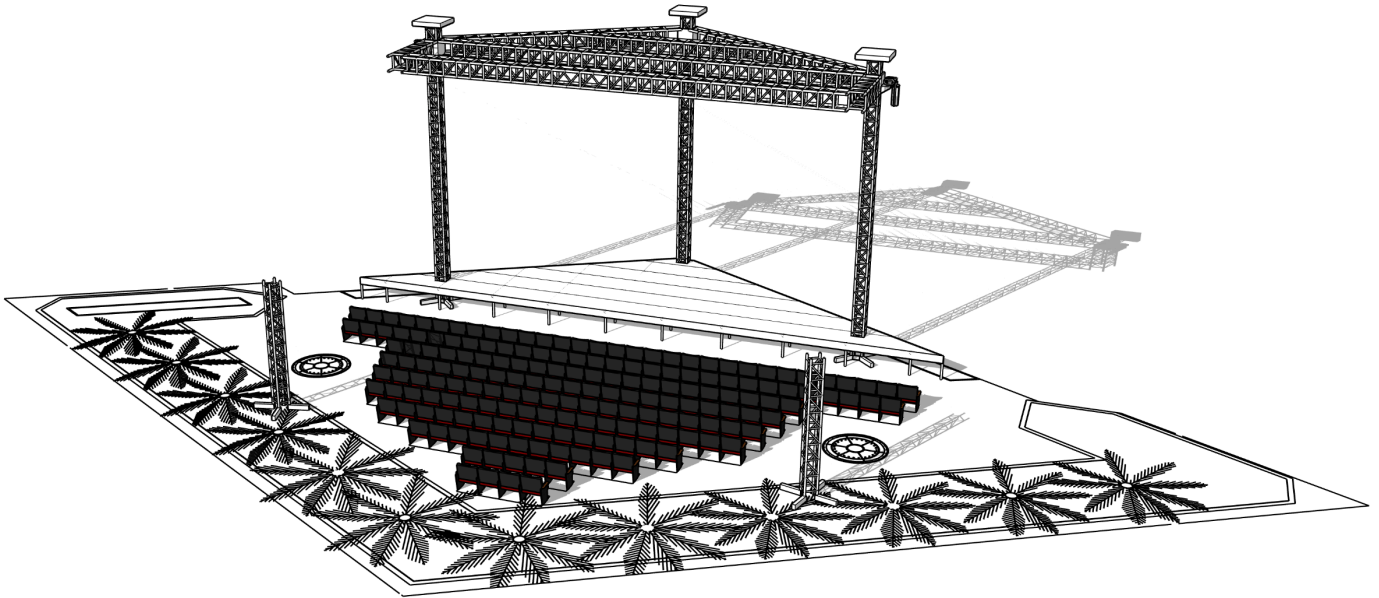
PERFORMANCE VENUE DETAILS

SEA STAGE (MOBILITY DISTRICT)

SEA STAGE (MOBILITY DISTRICT STAGE)

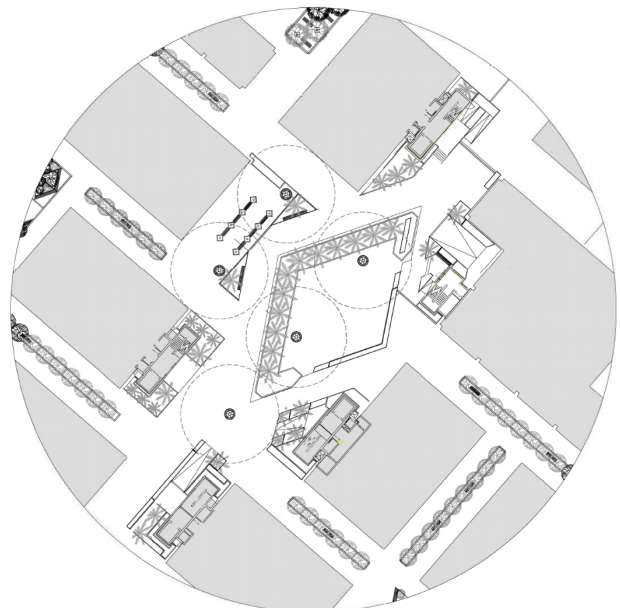
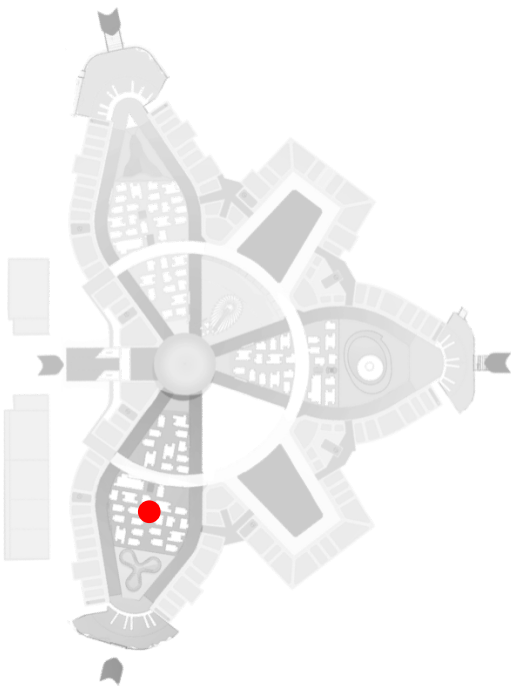
Located in the heart of the Mobility District, this district stage can host events promoting participants outside their Pavilion, including dance, music, theatre, children's entertainment, cinema, poetry, talks, lectures, comedy and street theatre

VIEW – TECHNICAL SPECIFICATION

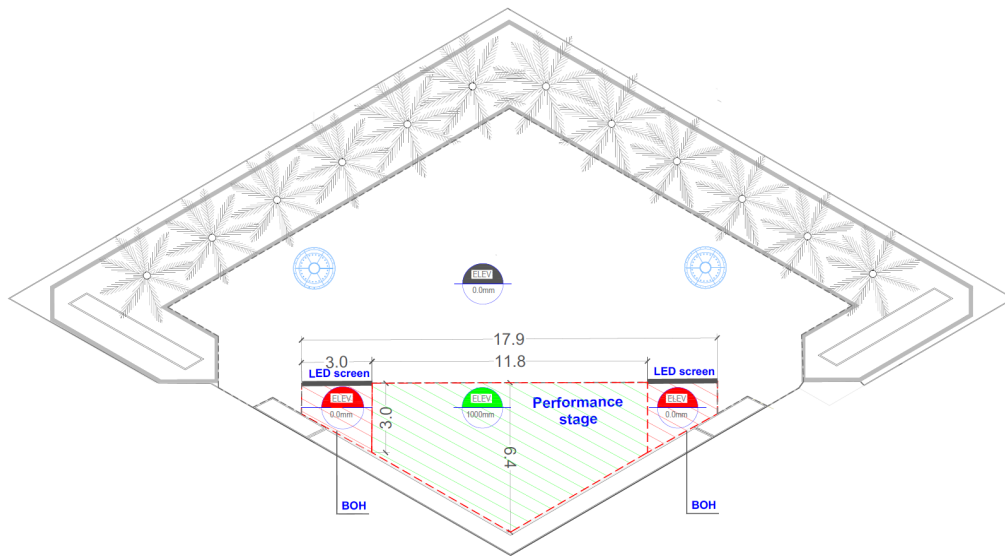


Note – technical specification illustration – not showing AV and lighting equipment, scenery, backdrops or stage covering to be installed.

LOCATION



PLAN VIEW



CAPACITIES

Performers on Stage	1 -19
Expo2020 Production Crew	6
Audience	Seated 175 Standing 350

PERFORMANCE STAGE DIMENSIONS

Width	11.8m
Depth	6m
Stage Performance Area	67.2sqm
Wing Area	Left and right – 8sqm

STAGE DETAILS

Stage Structure	Permanent	Covering	Yes
Type	Triangular	Location	Outdoor
Format	Modular	Flexibility	Thrust, extension, catwalk, dance floor
Stage Load	600kg/m ²	Power	200A TPN
Truss Capacity	70kg/m SWL	Technical Support Area	Main Technical Compound

POWER

Production Lighting	Minimum Breaker Size TPN	Connected Load (kW)	Phase (+N & E)	Voltage TPN
Under stage	63A	16	3	380
Production Sound (Isolated Earth)				
Under stage	32A	10	3	380
Production Video				
Under stage	32A	30	3	380

Production Lighting

Show Control	<ul style="list-style-type: none"> - Small lighting desk with laptop - Remote Device Management system - DMX signaling control
Fixtures	<ul style="list-style-type: none"> - 8 x LED moving head wash lights - 8 x LED moving head beam lights - 8 x LED moving head beam lights - 4 x static blinders

Production Sound and Communications

FOH Console, PA and monitors	<ul style="list-style-type: none"> - Digital mixing console - Active PA system, ground stacked - Active monitor speaker system - Wireless In-Ear monitoring system
Microphones	<ul style="list-style-type: none"> - 4 x wireless dynamic microphones - 4 x wired dynamic microphones - 1 x percussion microphone pack - 4 x lavalier microphones - 10 x clip-on microphones - 4 x hanging choir microphones - Tall microphone stands - Short microphone stands
Communications, wireless	<ul style="list-style-type: none"> - Multichannel wireless communication system - Wireless belt packs - Wired headsets

Visual Imaging

LED Screens	<ul style="list-style-type: none"> - 6mm pitch LED panels - Portrait orientation - stage left LED screen - Portrait orientation - stage right LED screen - Portrait orientation – upstage LED screen
Camera	<ul style="list-style-type: none"> - 2 x HD quality RF camera - Short capture lens
Media Servers	<ul style="list-style-type: none"> - 1 x DVI media server
Vision mixing	<ul style="list-style-type: none"> - Monitor screens - Switching system



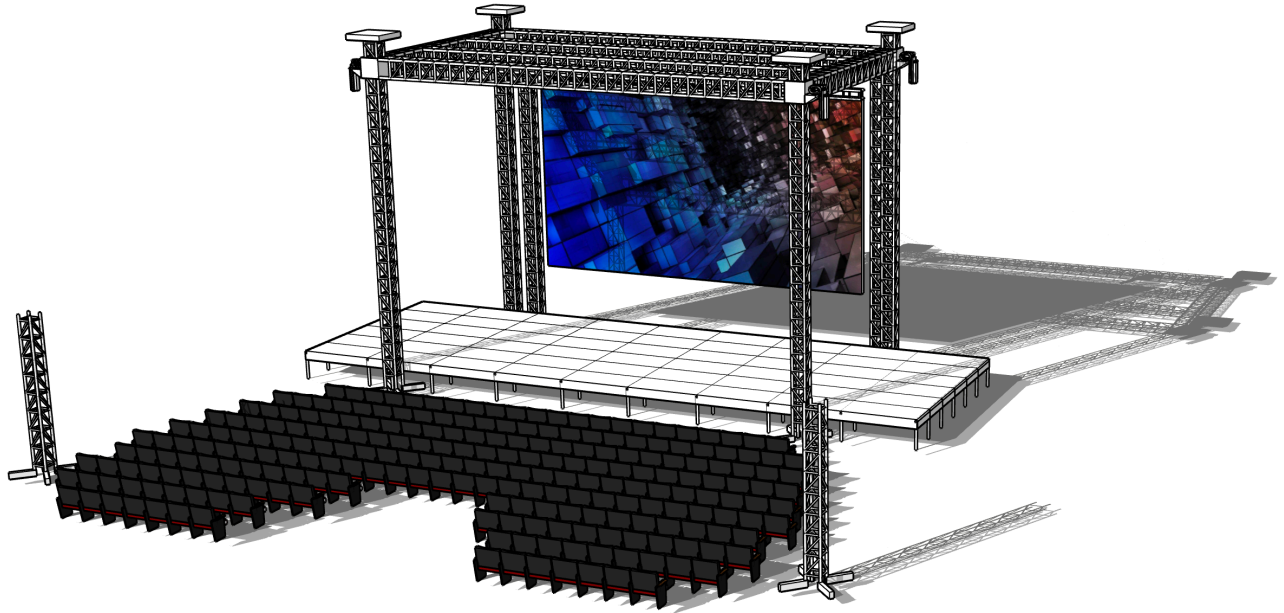
إكسبو 2020 EXPO 2020
دبي، الإمارات العربية المتحدة
DUBAI, UNITED ARAB EMIRATES

EXPO 2020 DUBAI
PERFORMANCE VENUE DETAILS
SUN STAGE
(OPPORTUNITY DISTRICT)

SUN STAGE (OPPORTUNITY DISTRICT STAGE)

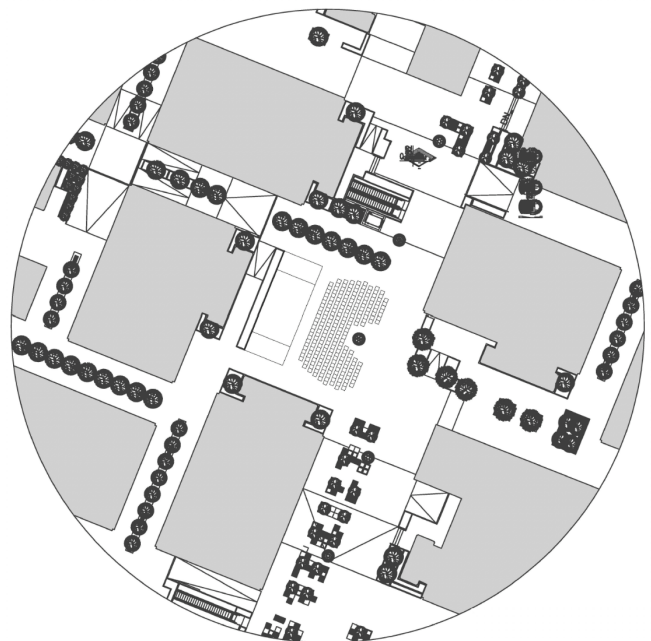
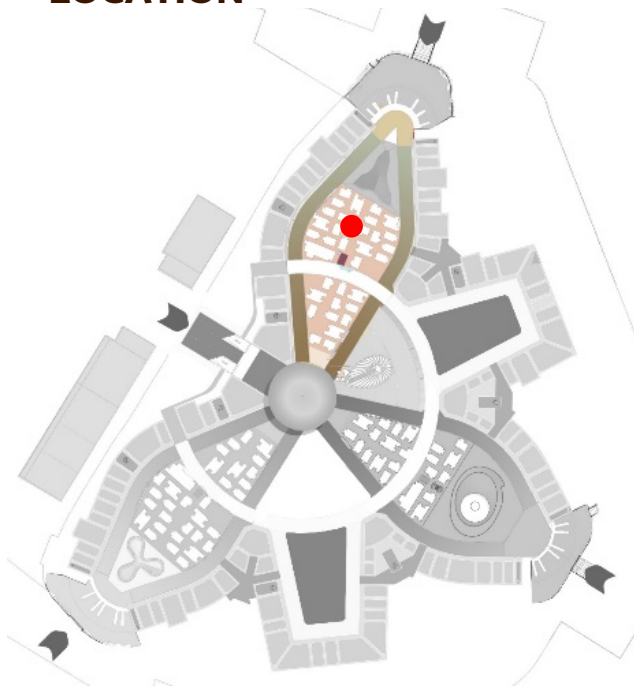
Located in the heart of the Opportunity District, this district stage can host events promoting participants outside their Pavilion, including dance, music, theatre, children's entertainment, cinema, poetry, talks, lectures, comedy and street theatre

VIEW – TECHNICAL SPECIFICATION

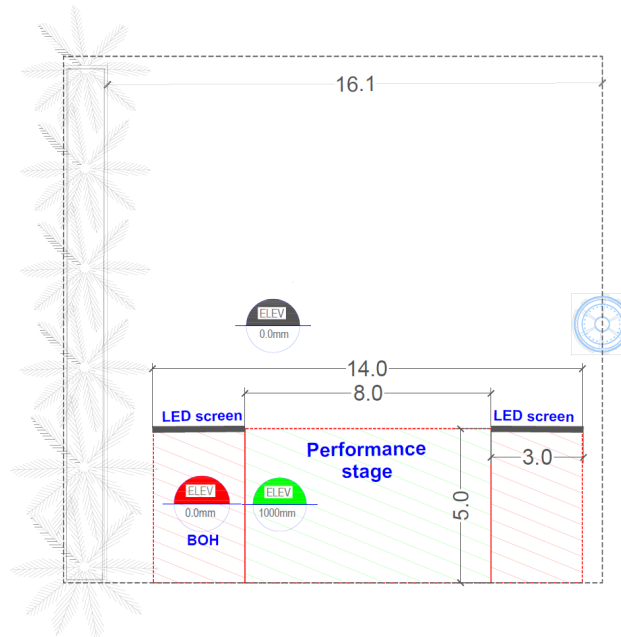


Note – conceptual illustration – not showing AV and lighting equipment, scenery, backdrops or stage covering to be installed.

LOCATION



PLAN VIEW



CAPACITIES

Performers on Stage	1 - 19
Expo2020 Production Crew	6
Audience	Seated 210 Standing 330

PERFORMANCE STAGE DIMENSIONS

Width	8m
Depth	5m
Stage Performance Area	54sqm
Wing Area	Left and right – 8sqm

STAGE DETAILS

Stage Structure	Permanent	Covering	Yes
Type	Rectangular	Location	Outdoor
Format	Modular	Flexibility	Thrust, extension, catwalk, dance floor
Stage Load	600kg/m ²	Power	200A TPN
Truss Capacity	70kg/m SWL	Technical Support Area	Main Technical Compound

POWER

Production Lighting	Minimum Breaker Size TPN	Connected Load (kW)	Phase (+N & E)	Voltage TPN
Under stage	63A	16	3	380
Production Sound (Isolated Earth)				
Under stage	32A	10	3	380
Production Video				
Under stage	32A	30	3	380

Production Lighting

Show Control	<ul style="list-style-type: none"> - Small lighting desk with laptop - Remote Device Management system - DMX signaling control
Fixtures	<ul style="list-style-type: none"> - 8 x LED moving head wash lights - 8 x LED moving head beam lights - 8 x LED moving head beam lights - 4 x static blinders

Production Sound and Communications

FOH Console, PA and monitors	<ul style="list-style-type: none"> - Digital mixing console - Active PA system, ground stacked - Active monitor speaker system - Wireless In-Ear monitoring system
Microphones	<ul style="list-style-type: none"> - 4 x wireless dynamic microphones - 4 x wired dynamic microphones - 1 x percussion microphone pack - 4 x lavalier microphones - 10 x clip-on microphones - 4 x hanging choir microphones - Tall microphone stands - Short microphone stands
Communications, wireless	<ul style="list-style-type: none"> - Multichannel wireless communication system - Wireless belt packs - Wired headsets

Visual Imaging

LED Screens	<ul style="list-style-type: none"> - 6mm pitch LED panels - Portrait orientation - stage left LED screen - Portrait orientation - stage right LED screen - Portrait orientation – upstage LED screen
Camera	<ul style="list-style-type: none"> - 2 x HD quality RF camera - Short capture lens
Media Servers	<ul style="list-style-type: none"> - 1 x DVI media server
Vision mixing	<ul style="list-style-type: none"> - Monitor screens - Switching system



إكسبو 2020 EXPO 2020
دبي، الإمارات العربية المتحدة
DUBAI, UNITED ARAB EMIRATES

EXPO 2020 DUBAI
PERFORMANCE SPACES
TERRA PAVILION
GHAF CIRCLE

DESCRIPTION

The Production and Delivery Team will provide technical support to this programmable performance space. The technical equipment, installed for the event or performance, is scalable in size in order to accommodate a wide range of creative performances, throughout the day and evening entertainment.



LOCATION



Located in the North West area of the Terra Pavilion plot, this performance space has very close access to:

- Sustainability District
- Public Realm
- Terra Pavilion
- Sustainability District Stage

CAPACITIES

Performer capacity	20
Audience	150

PROGRAMMING INTENT

The Ghaf Circle is an attractive setting for cultural music, street performing arts, spoken word recitals and audience engagement activities.

TECHNICAL PROVISION

Performers will have exclusive access to the latest AV equipment on the market and will have a team of dedicated operators to provide technical support.



إكسبو 2020 EXPO 2020
دبي، الإمارات العربية المتحدة
DUBAI, UNITED ARAB EMIRATES

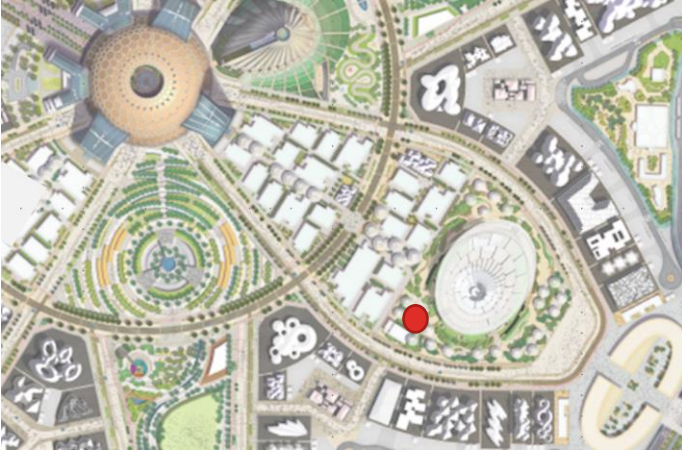
EXPO 2020 DUBAI
PERFORMANCE SPACES
TERRA PAVILION
WADI CIRCLE

DESCRIPTION

The Production and Delivery Team will provide technical support to this programmable performance space. The technical equipment, installed for the event or performance, is scalable in size in order to accommodate a wide range of creative performances, throughout the day and evening entertainment.



LOCATION



Located in the South West area of the Terra Pavilion plot, this performance space has very close access to:

- Sustainability District
- Public Realm
- Terra Pavilion
- Sustainability District Stage

CAPACITIES

Performer capacity	20
Audience	150

PROGRAMMING INTENT

The Wadi Circle is an attractive setting for cultural music, street performing arts, spoken word recitals and audience engagement activities.

TECHNICAL PROVISION

Performers will have exclusive access to the latest AV equipment on the market and will have a team of dedicated operators to provide technical support.