



**RETURN BIDS TO:  
RETOURNER LES SOUMISSIONS À:**

Bid Receiving - PWGSC / Réception des  
soumissions - TPSGC  
Suite 1000 Canada Place  
9700 Jasper Ave NW  
Edmonton  
Alberta  
T5J 4C3  
Bid Fax: (780) 497-3510

**LETTER OF INTEREST  
LETTRE D'INTÉRÊT**

Comments - Commentaires

Vendor/Firm Name and Address  
Raison sociale et adresse du  
fournisseur/de l'entrepreneur

Issuing Office - Bureau de distribution  
Public Works and Government Services Canada/Travaux  
publics et Services gouvernementaux Canada  
Suite 1650  
635 - 8th Ave. S.W.  
Bureau 1650  
635 - 8e avenue, SO  
Calgary  
Calgary  
Alberta  
T2P 3M3

|                                                                                                                                                                                                               |                                                                |
|---------------------------------------------------------------------------------------------------------------------------------------------------------------------------------------------------------------|----------------------------------------------------------------|
| <b>Title - Sujet</b><br>Coarse Grained Borrow - RFI                                                                                                                                                           |                                                                |
| <b>Solicitation No. - N° de l'invitation</b><br>EW702-210011/A                                                                                                                                                | <b>Date</b><br>2020-04-03                                      |
| <b>Client Reference No. - N° de référence du client</b><br>EW702-210011                                                                                                                                       | <b>GETS Ref. No. - N° de réf. de SEAG</b><br>PW-\$GMP-015-7059 |
| <b>File No. - N° de dossier</b><br>GMP-0-43001 (015)                                                                                                                                                          | <b>CCC No./N° CCC - FMS No./N° VME</b>                         |
| <b>Solicitation Closes - L'invitation prend fin</b><br><b>at - à 02:00 PM</b><br><b>on - le 2020-06-04</b>                                                                                                    |                                                                |
| <b>Time Zone</b><br><b>Fuseau horaire</b><br>Mountain Daylight Saving<br>Time MDT                                                                                                                             |                                                                |
| <b>F.O.B. - F.A.B.</b><br><b>Plant-Usine:</b> <input type="checkbox"/> <b>Destination:</b> <input type="checkbox"/> <b>Other-Autre:</b> <input type="checkbox"/>                                              |                                                                |
| <b>Address Enquiries to: - Adresser toutes questions à:</b><br>Bilous, Isabelle                                                                                                                               | <b>Buyer Id - Id de l'acheteur</b><br>gmp015                   |
| <b>Telephone No. - N° de téléphone</b><br>(780) 782-8714 ( )                                                                                                                                                  | <b>FAX No. - N° de FAX</b><br>(780) 497-3510                   |
| <b>Destination - of Goods, Services, and Construction:</b><br><b>Destination - des biens, services et construction:</b><br>PWGSC/TPSGC<br>Suite 1000 Canada Place<br>Jasper Ave NW<br>Edmonton, AB<br>T5J 4C3 |                                                                |

Instructions: See Herein

Instructions: Voir aux présentes

|                                                                                                                                                                                                                                                                |                                              |
|----------------------------------------------------------------------------------------------------------------------------------------------------------------------------------------------------------------------------------------------------------------|----------------------------------------------|
| <b>Delivery Required - Livraison exigée</b><br>See Herein                                                                                                                                                                                                      | <b>Delivery Offered - Livraison proposée</b> |
| <b>Vendor/Firm Name and Address</b><br><b>Raison sociale et adresse du fournisseur/de l'entrepreneur</b>                                                                                                                                                       |                                              |
| <b>Telephone No. - N° de téléphone</b><br><b>Facsimile No. - N° de télécopieur</b>                                                                                                                                                                             |                                              |
| <b>Name and title of person authorized to sign on behalf of Vendor/Firm</b><br><b>(type or print)</b><br><b>Nom et titre de la personne autorisée à signer au nom du fournisseur/</b><br><b>de l'entrepreneur (taper ou écrire en caractères d'imprimerie)</b> |                                              |
| <b>Signature</b>                                                                                                                                                                                                                                               | <b>Date</b>                                  |

## **COARSE GRAINED BORROW FOR REMEDIATION REQUEST FOR INFORMATION**

**This procurement is subject to the Tlicho Land Claims and Self-Government Agreement.**

### **1. INTRODUCTION**

#### **1.1 Definitions**

The following terms shall have the meanings set out below when used in this Request For Information (RFI):

- I. "Supplier", or "Company", means a party responding to this RFI.
- II. "Response(s)" means Supplier response to this RFI.
- III. "PSPC" means Public Services and Procurement Canada (PSPC), who is acting on behalf of Crown-Indigenous Relations and Northern Affairs Canada (CIRNAC).
- IV. "GMRP" means Giant Mine Remediation Project represented by PSPC, CIRNAC, and Government of Northwest Territories (GNWT).
- V. "Off-Site" refers to outside of the GMRP boundary (refer Appendix A Figure 1.0-1 Regional Location of Giant Mine).
- VI. Stage I refers to this RFI, as described in Section 3 of this document.

#### **1.2 Intent of this RFI**

##### **Intent**

The intent of this RFI is to obtain information from the Supplier and not to constitute a tender, create contractual relations of any kind between PSPC and the Supplier, or commit PSPC to award or enter into any contract. PSPC is interested in identifying resources and capacity related to off-site coarse grained borrow sources.

##### **No Legal Duties**

By responding to this RFI, the Supplier specifically acknowledges that this RFI does not create any legal duties and PSPC owes no legal duties to the Supplier. Failure to participate in this process will not preclude any Supplier from any future procurement processes associated with the potential remediation work described herein related to coarse grained borrow supply.

##### **The Information**

By responding to this RFI, the Supplier acknowledges that all statements and information contained in a response, to the best of its knowledge, are true and correct.

##### **Costs**

All costs for preparation of this submission is borne by the submitting Supplier(s).

## **2. BACKGROUND**

### **2.1 Giant Mine History**

Giant Mine (the site) is a former gold mine located approximately five kilometers north of Yellowknife, Northwest Territories (NWT) and in close proximity to the communities of Ndilo and Dettah (Refer Appendix A Figure 1.0-1 Regional Location of Giant Mine). The mine produced gold from 1948 until 1999 and ore for off-site processing from 2000 until July 2004, when mining operations ceased permanently. Care, custody, and control of the mine was transferred to CIRNAC and the GNWT.

The GMRP is currently in the regulatory, remedial design, and planning stages of the remediation process. The remediation plan has been subject to both regulatory review and consultation. The GMRP is currently proceeding through a regulatory period and the remedial works will not proceed prior to 2021.

### **2.2 Borrow Sources**

The closure and reclamation of the Giant Mine will require coarse grained (crushed bedrock) borrow material for several remediation activities including; partial backfilling of open pits, construction of landfill cells, freeze pads, and cover material for tailings containment areas, and excavated contaminated soils. The current proposed strategy to meet the requirement for borrow material needed for remediation activities is to source borrow materials from on-site sources. Investigations are underway to determine if the on-site material is of suitable volume and quality; Suppliers are referred to Section 5 Reference Documents of this document for the *Closure and Reclamation Plan* and the *Giant Mine Coarse Grain Borrow Source Acid Rock Drainage / Metal Leaching Geochemical Assessment* submitted as part of the Water Licensing process to the Mackenzie Valley Land and Water Board.

GMRP is considering alternate supplies from off-site sources to meet volume demand, or quality, should there be delays in processing borrow on-site. It is assumed the material would be sourced off-site from quarries and be processed at the source location to meet various specifications for particle size distribution. The quantity and quality requirements are not yet known, as borrow uses have not been finalised at the site. Until detailed design is completed, this information will not be available.

## **3. STAGE I SCOPE OF WORK – REQUEST FOR INFORMATION (RFI)**

Suppliers are invited to participate in this RFI. This RFI is focused on determining Suppliers that can produce coarse grained (crushed bedrock) borrow material that has the potential to meet varied geochemical and geotechnical requirements for various applications at the GMRP. This RFI is the first stage of a multi-staged process focused on identifying suitable off-site borrow sources for use in remediation.

This document provides the necessary information and submission requirements for Stage I Suppliers to express interest in providing borrow to the GMRP. Information to be included and tables to be completed in the response are described in the below subsections. Submittal requirements are outlined in Section 4.

### 3.1 Borrow Source Details

Submit a general description of the proposed borrow source, or sources. A general description of the proposed borrow source(s) can include, but is not limited to:

- Location(s) of borrow material; geographic location in relation to Giant Mine, and source map / expected footprint.
- Details of material type / bedrock geology.
- Volumes of coarse grained material available from the borrow source.
- Current capabilities to produce coarse grained borrow, Supplier preparedness to start production, licensing status of each proposed borrow source, and the earliest date to supply material.
- If known, production rates, seasonal operating constraints, allowance for trucks and transport movements to pick up at the location, or for delivery to the Giant Mine site.
- Complete information in **Table 1 Summary of Borrow Sources**, in the attached spreadsheet, about the Suppliers proposed sources, in addition to a written submittal.

### 3.2 Existing Material Testing of Borrow Sources

Submit available testing information for the proposed borrow source(s). Information to include existing test results by an accredited laboratory to demonstrate ability to produce materials to meet future specifications. Provide all information available. Examples of testing requested to be submitted include, but are not limited to:

- Existing testing such as Acid-Base Accounting (ABA), Shake Flask Extraction (SFE), Aqua Regia digestion and Rietveld XRD Trace Metals by ICP-MS.
- Relative Density and Absorption of Coarse Aggregates (ASTM C127), Soundness of Aggregates by use of sodium sulfate or magnesium sulfate (ASTM C88), and Los Angeles Abrasion of Coarse Aggregates (ASTM C535).
- Complete information in **Table 2 Existing Material Testing of Borrow Sources** in the attached spreadsheet, about the proposed sources, in addition to the written submittal. Populate with all of the sources identified in **Table 1 Summary of Borrow Sources**, if no results available leave columns blank.
- If test results are available include in the Suppliers submittal.

Note that, at minimum, the GMRP will require borrow materials which are sourced and processed from bedrock, with a total arsenic content by weight below 340 ppm, non Acid Generating (non-PAG), and a total Sulfur content less than 1% by weight.

### 3.3 Previous Projects

Submit available information for the project history of the Supplier of the proposed borrow source(s).

- Provide a brief synopsis of the recent work in the NWT, specifically the local region of Yellowknife.
- Provide information about material supply / construction projects your Company (the Supplier) has executed in the NWT, specifically the Yellowknife area, in the last 5 years. Provide information on projects where the experience is relevant to the production of borrow material from bedrock sources.
- Provide information in **Table 3 Projects Completed in the Last 5 years in the NWT (specifically Yellowknife area)** in the attached spreadsheet.

### 3.4 Supplier Details

Submit available information for the Supplier of the proposed borrow source(s).

- Provide a brief synopsis of the Supplier corporate/construction background.
- Is your company (the Supplier) majority-owned (i.e.  $\geq 51\%$  ownership & control) by an Aboriginal community or Aboriginal person(s)? If so, specify the name(s) of the Aboriginal owner(s) and with which Aboriginal community they are associated.
- Complete information in **Table 4 Self Performed or Subcontracted Borrow Sources** in the attached spreadsheet, about your proposed sources, in addition to your written submittal. Indicate whether the source development will be self performed or will be subcontracted, and/or whether subcontractor is of Aboriginal ownership.

## 4. STAGE I SUBMISSIONS, QUESTIONS, AND FURTHER INFORMATION

### 4.1 Stage I Submissions

PSPC is interested in identifying resources and capacity related to off-site coarse grained borrow sources. Suppliers are requested to make the following submission:

- Submit a package response to the RFI by 04 June 2020
  - Written Response to the Sections called for in this RFI:
    - Borrow Source Details
    - Existing Material Test Results of Borrow Sources
    - Supplier submittal to include copies of existing test results, if available.
    - Previous Projects
    - Supplier Details
  - Completed tables of **Appendix B** called for in this RFI:
    - Table 1 Summary of Borrow Sources
    - Table 2 Existing Material Testing of Borrow Sources
    - Table 3 Projects Completed in the Last 5 years in the NWT (specifically Yellowknife)
    - Table 4 Self Performed or Subcontracted Borrow Sources

- All submittals are to be electronic and less than 5 MB in size per email submission (if oversized files, multiple emails will be accepted).
- Provide the submittals noted above to as an electronic submission via email:

Isabelle Bilous  
Procurement Specialist  
Public Services and Procurement Canada  
Ph: 780-782-8714  
e-mail: [Isabelle.Bilous@pwgsc-tpsgc.gc.ca](mailto:Isabelle.Bilous@pwgsc-tpsgc.gc.ca)

The information received will be distributed to the GMRP and held confidential.

## 4.2 Questions

All inquiries, whether telephone or e-mail shall also be addressed to the PSPC Procurement Specialist.

## 4.3 Further Information – The RFI Process

Following the review of the Stage I RFI submissions, the progress for the GMRP on-site assessments, and receipt of Water License from the MVLWB, GMRP may proceed with Stage II RFI work. PSPC may elect to terminate this process following review of the Stage I responses to this RFI.

The next stages of the program have not been defined, but Stage II RFI work may include:

- Further requests regarding the sections above:
  - Borrow Source Details
  - Existing Material Test Results of Bedrock Borrow Sources
  - Previous Projects
  - Supplier Details
- A site visit
- Request to complete additional testing, e.g. geochemical testing to characterize the acid rock drainage and metal leaching properties of the coarse grained borrow materials, and geotechnical testing to characterize the physical properties of the coarse grained borrow materials.

There is no guarantee that Stage II work will proceed. PSPC may elect to terminate this process following review of the Stage I responses to this RFI.

## 4.4 Further Information - Project Remediation Activities

Failure to participate in this process will not preclude any Supplier from any future procurement processes associated with the potential remediation work described herein related to Coarse Grained Borrow Supply. PSPC encourages Suppliers to look on MERX for future tendering opportunities, separate to this RFI.

## 5. REFERENCE DOCUMENTS

Giant Mine Remediation Project. Closure and Reclamation Plan Version 1.0. January 2019. CIRNAC/GWNT.

<<[http://registry.mvlwb.ca/Documents/MV2007L8-0031/MV2007L8-0031%20-%20DIAND-GIANT%20-%20GMRP%20Closure%20and%20Reclamation%20Plan%20\(C%20and%20R%20Plan\)%20-%20Apr1-19.pdf](http://registry.mvlwb.ca/Documents/MV2007L8-0031/MV2007L8-0031%20-%20DIAND-GIANT%20-%20GMRP%20Closure%20and%20Reclamation%20Plan%20(C%20and%20R%20Plan)%20-%20Apr1-19.pdf)>>

Giant Mine Remediation Project. Giant Mine Coarse Grain Borrow Source Acid Rock Drainage / Metal Leaching Geochemical Assessment, Revision 2. August 26, 2019. AECOM Canada Pty Ltd.

<<<http://registry.mvlwb.ca/Documents/MV2007L8-0031/MV2007L8-0031%20-%20DIAND-GIANT%20-%20Coarse%20Grain%20Borrow%20Source%20ARD-ML%20Geochemical%20Assessment%20-%20Sept4-19.pdf>>>

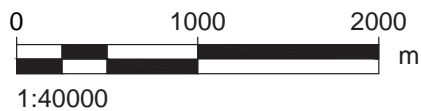
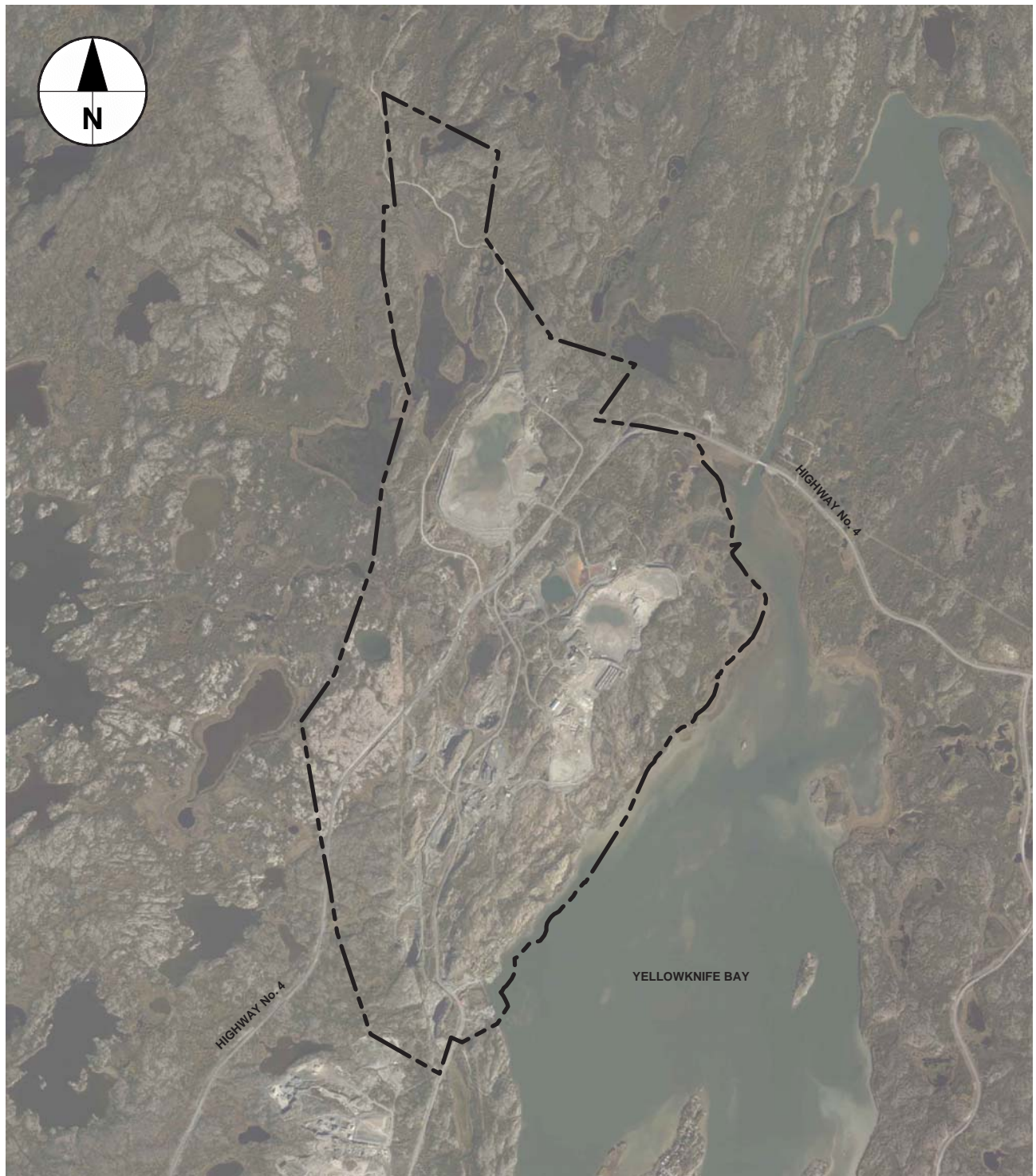
## 6. CLOSURE

Your time and efforts are valuable to us and we thank you for all your efforts in obtaining the requested information.

## **APPENDIX A**

### **Figure 1.0-1 Regional Location of Giant Mine**

***Source: Giant Mine Remediation Project.  
Closure and Reclamation Plan  
Version 1.0. January 2019. CIRNAC/GWNT.***



**LEGEND:**

— — — — — GIANT MINE LEASE BOUNDARY

**Issue Status: FINAL**

## **APPENDIX B**

**Tables to be Completed, and Included, in  
Supplier Submittal to STAGE I Request For Information**







