

BILL OF MATERIAL LISTE DE MATÉRIEL			
MRQ	QTY	DESCRIPTION	WEIGHT
MQE	QTÉ	DESCRIPTION	MASSE
M001	24	ANCHORS/ANCRAGES 25#	105.6
B006	4	BASE ASS./ASS. BASE	215.2
V010	4	L-76x76x9.5x3038	139.2
V012	4	L-76x76x9.5x3038	134.4
V013	4	L-89x89x9.5x3038	158.4
V015	4	L-102x102x12.7x3038	240.0
V016	4	L-127x127x15.9x1514	186.8
V017	4	L-127x127x15.9x3038	374.8
X022	90	L-76x76x7.9x1450	1143.0
X023	3	FB-6.4x51x1525	12.0
X027	3	L-76x76x7.9x1525	40.2
H029	30	L-76x76x7.9x925	243.0
H030	10	L-76x76x7.9x925	81.0
H031	1	L-127x127x7.9x1049	16.6
H032	3	L-127x127x7.9x1049	49.8
P033	1	L-76x76x7.9x549	5.2
P034	1	L-76x76x7.9x1199	11.3
P035	1	L-76x76x7.9x1500	14.1
P036	1	L-76x76x7.9x2132	20.1
P045	1	L-76x76x7.9x909	8.6
P046	1	L-152x89x7.9x644	9.7
P047	1	L-76x76x7.9x909	8.6
P048	1	L-76x76x7.9x1033	9.7
P049	2	L-76x76x7.9x755	14.2
P050	1	L-51x51x6.4x1082	5.3
P051	1	L-51x51x6.4x1082	5.3
P052	1	L-51x51x6.4x644	3.2
P053	1	L-102x76x7.9x1499	16.6
P054	1	L-51x51x6.4x1179	5.8
P056	1	FB-6.4x102x2122	11.1
P057	2	FB-6.4x102x1179	12.4
P058	1	FB-6.4x102x539	2.8
P059	1	FB-6.4x51x2122	5.6
P060	1	FB-6.4x51x1179	3.1
P061	1	FB-6.4x51x644	1.7
P062	1	FB-6.4x51x539	1.4
P069	2	FB-9.5x127x270	4.2
P070	2	L-51x51x6.4x1139	11.2
P071	1	L-51x51x6.4x385	1.9
P072	3	L-51x51x6.4x385	5.7
P073	1	L-76x76x7.9x385	3.6
P074	1	PL-3.2x170x330	1.4
P075	2	PL-6.35x385x419	16.6
P076	1	PL-6.4x400x565	11.7
P077	1	PL-4.8x356#	3.9
P078	2	FB-6.4x64x64	0.4
R079	2	W-150x22x1952	90.0
E081	10	FB-6.4x51x259	9.0
E082	10	FB-6.4x51x508	13.0
M083	10	FB-6.4x51x377	10.0
E084	1	FB-6.4x51x315	0.8
E086	10	FB-6.4x51x259	7.0
E087	1	LADDER/ÉCHELLEx2915	31.7
E088	4	LADDER/ÉCHELLEx3035	129.2
E089	1	LADDER/ÉCHELLEx1511	16.1
P090	1	GRATING/CAIL. 548x1173	28.8
P091	1	GRATING/CAIL. 608x2110	57.5
E096	1	L-127x89x7.9x414	10.9
M100	20	FB-9.5x152x446	90.0
M101	6	FB-9.5x254x335	39.6
M102	7	FB-9.5x305x662	95.2
M103	32	FB-9.5x305x600	454.4
M104	8	FB-9.5x305x600	113.6
M105	16	FB-9.5x305x600	227.2
M106	8	FB-9.5x305x600	113.6
M107	8	FB-9.5x305x600	113.6
M108	1	PL-9.5x415x662	18.0
M119	1	FB-6.4x51x370	1.3
M120	1	GATE/BARRIERE	11.8
M121	1	PIN/TIGE 12.7#x370	0.2
M122	1	SPRING/RESSORT	0.05
E123	10	FB-9.5x51x390	-
E124	8	FIXATION POUR BOITE	-
E125	2	FIXATION POUR CAPTEUR	-
A5	5	D-RING "SALA" #2101636	2.5
B5	1	LATCH/LOQUET "STANLEY" #76-3827	0.25
	4	S.S. BOLTS/BOULONS INOXYDABLES 3/16" X 3/4" WITH/AVEC NUTS & WASH./ECROUS & ROND.	
	676	BOLTS/BOULONS 3/4" X 2"	184.0
	457	BOLTS/BOULONS 3/4" X 2 1/4"	132.2
	192	BOLTS/BOULONS 3/4" X 2 1/2"	58.3
	2	BOLTS/BOULONS 3/4" X 2 3/4"	0.6
	1327	LOCK W./R. DE BLOCAGE 3/4"	39.4
	47	R. FILLS/ESPACEURS 3/4" X 9.5	4.4
	2	R. FILLS/ESPACEURS 3/4" X 7.9	0.2
	151	BOLTS/BOULONS 1/2" X 1 1/2"	13.6
	36	BOLTS/BOULONS 1/2" X 1 3/4"	3.5
	5	BOLTS/BOULONS 1/2" X 2"	0.5
	3	BOLTS/BOULONS 1/2" X 2 3/4"	0.4
	195	LOCK W./R. DE BLOCAGE 1/2"	1.9
	4	R. FILLS/ESPACEURS 1/2" X 7.9	0.2
	20	CLIPS/ATTACHES TYPE "D-19"	0.5
	20	BOLTS/BOULONS 5/16" X 2 1/2"	0.5
TOTAL WEIGHT / MASSE TOTALE :			5501.9 kg

Pêches et Océans Canada / Fisheries and Oceans Canada
Garde côtière / Coast Guard

Services techniques / Systèmes électroniques et informatiques / Informations techniques et graphiques
101 Bd. Champlain (étage 18) / Québec (Québec) G1K 7Y7

NOTES / NOTES

- CAPACITÉ DE LA STRUCTURE AUX POINTS D'ANCRAGE = 18 kN
- ANNEAUX DE SÉCURITÉ "D-RING":
- CAPACITÉ MAXIMALE = 140 kg.
- HAUTEUR DE CHUTE LIBRE MAXIMALE = 1.8m.
- JAMAIS PLUS D'UN SYSTÈME DE PROTECTION PERSONNEL À LA FOIS
- L'ÉCHELLE DOIT ÊTRE MUNIE D'UN RAIL DE SÉCURITÉ "MILLER SHURE TRACK" (OU UN ÉQUIVALENT APPROUVÉ PAR LA GCC) AVEC TOUTE LA QUINCAILLERIE REQUISE POUR SON INSTALLATION.
- NUANCE D'ACIER: TOUS LES ÉLÉMENTS 300 Mpa SAUF LES ÉLÉMENTS SUIVANTS: LES CORNÈRES: 350 Mpa / LES PROFILÉS W: 350 Mpa
- TOUS LES BOULONS SELON ASTM A-325, TYPE 1.
- TOUTES LES RONDELLES DE BLOCAGE SELON ASME B18.21.1
- TOUS LES ESPACEURS ANNULAIRES SELON ANSI B18.22.1
- LONGUEUR DES BOULONS: 2" LG POUR BOULON 3/4", S.I.C. / 1 1/2" LG POUR BOULON 1/2", S.I.C.
- TOUTES LES QUANTITÉS DE BOULON INCLUENT UN SURPLUS DE 5 %.
- CAPACITY OF THE STRUCTURE AT ANCHOR POINTS = 18 kN
- SECURITY RINGS "D-RING":
- MAXIMUM CAPACITY = 140 kg.
- MAXIMUM FALLING HEIGHT = 1.8m.
- NEVER MORE THAN ONE PERSONAL SECURITY SYSTEM AT THE SAME TIME
- THE LADDER SHOULD BE EQUIPPED WITH A SAFETY RAIL "MILLER SHURE TRACK" MODEL 8631 (OR EQUIVALENT APPROVED BY GCC) WITH ALL HARDWARE REQUIRED FOR MOUNTING.
- STEEL GRADE: ALL MEMBERS 300 Mpa EXCEPT FOR: ANGLES: 350 Mpa / W SHAPE: 350 Mpa
- ALL BOLTS ACCORDING TO ASTM A-325, TYPE 1.
- ALL LOCK WASHERS ACCORDING TO ASME B18.21.1
- ALL RING FILLS ACCORDING TO ANSI B18.22.1
- BOLT LENGTH: 2" LG FOR 3/4" BOLT, U.N. / 1 1/2" LG FOR 1/2" BOLT, U.N.
- ALL BOLT QUANTITIES INCLUDE 5 % EXTRA.

Revisión	Description	Par/By	Date
1	M122 ADDED/M122 AJOUTÉ	M.V.	2006.03.13

A: Numéro du détail / Detail no.
B: Feuille sur laquelle le détail est référencé / Location drawing no.
C: Feuille sur laquelle le détail est dessiné / Drawing no.

Toute modification doit être rapportée à: / All modification must be reported to:

GARDE CÔTIÈRE, RÉGION LAURENTIENNE / SERVICES TECHNIQUES / Systèmes électroniques et informatiques / Informations Techniques et Graphiques

Dossier: / File no.

TOUR D'ACIER À CLAIRE-VOIE
TOUR DE 3,05m (10pi) @ 24,42m (80pi)

Dessin: / Drawing no.

TOUR DE 16,80m (55pi)
PLAN DE MONTAGE

Conçu par: / Designed by: P-C.GAGNON, ing. / Date: 2003/05/30

Dessiné par: / Drawn by: MICHEL VACHON / Date: 2006/02/06

Vérifié par: / Verified by: MICHEL VACHON / Date: 2006/02/06

Approuvé par: / Approved by:

No. dossier: / File no.: / Échelle: / Scale: 1 = 40

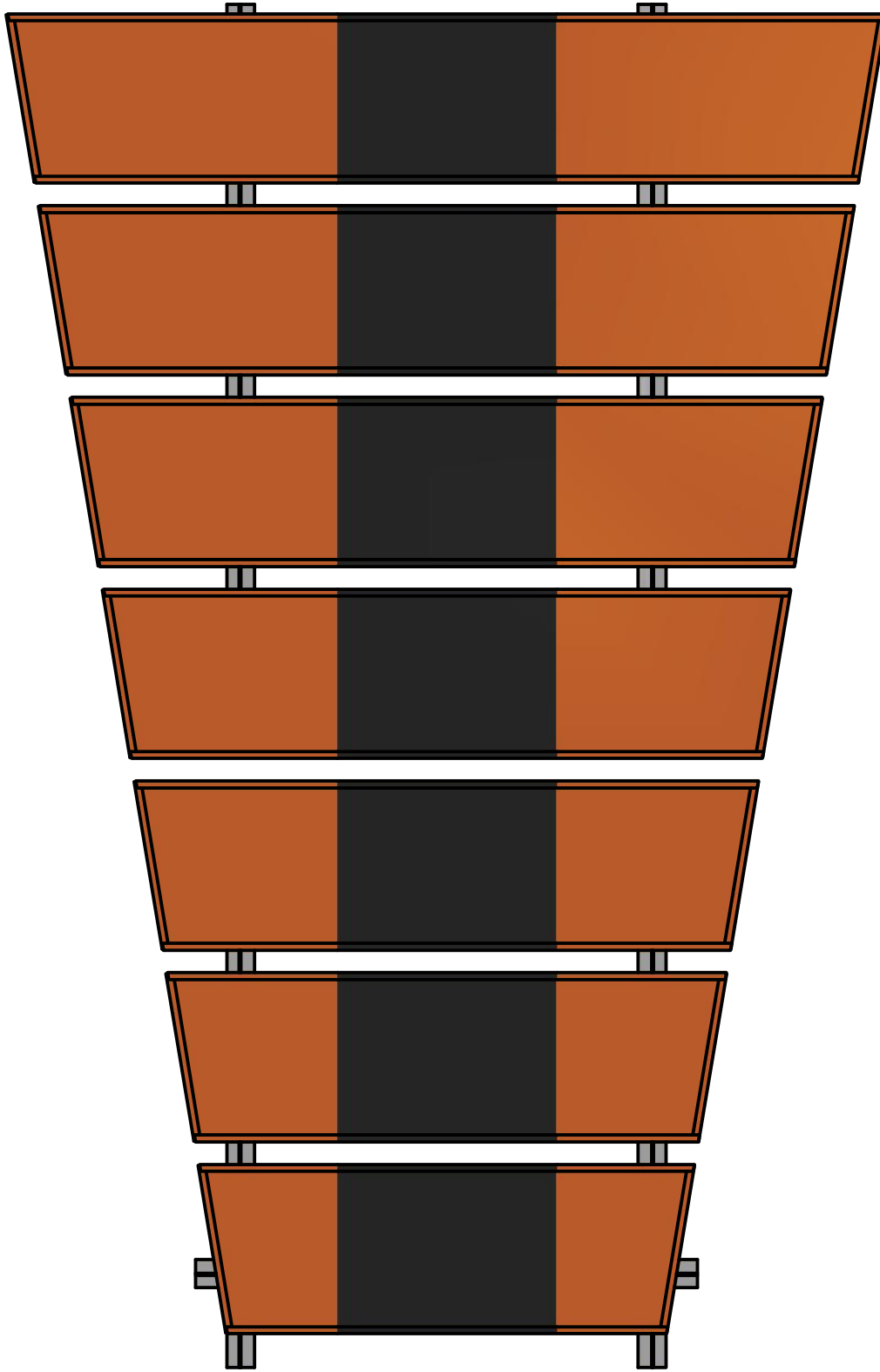
No. dessin: / Drawing no.: / No. feuille: / Sheet no.: 08990 SM-10

4

3

2



1



PARTS LIST				
ITEM	QTY	PART NUMBER	DESCRIPTION	DRAWING
1	112 ft	P1-P14	12" SIGNATURE ALUMINUM PANEL	3
2	142 ft	P15-P28, P31 & P32	3 1/2" 30ga STEEL ROOFING SHEET - ORANGE	4-5
3	37 ft	P29 & P30	3 1/2" 30ga STEEL ROOFING SHEET - BLACK	4
5	56 ft	P33-P39	24" 30ga STEEL ROOFING SHEET - ORANGE	6
6	19 ft	P40	24" 30ga STEEL ROOFING SHEET - BLACK	6
7	2	P41	BACK TO BACK 9' X 2" X 2" X 1/4" ALUMINUM ANGLES	7
8	2	P42	BACK TO BACK 7' X 2" X 2" X 1/4" ALUMINUM ANGLES	7
9	4	P43	BACK TO BACK 6' X 2" X 2" X 1/4" ALUMINUM ANGLES	7

NOTES:

SIGNATURE ALUMINUM PANELS REFER TO CUSTOM MADE 12" ALUMINUM PANELS FROM SIGNATURE ALUMINUM IN PICKERING, ON
 ALL 3/8" x 1 1/4" CAP SCREWS TO BE STAINLESS STEEL OR CADMIUM COATED
 UNSPECIFIED SCREWS REFER TO 10-16 X 3/4" SELF TAPPING HEAD HEX SCREWS
 FRONT DAYMARKS ARE CONSTRUCTED THE EXACT SAME, BUT THEY SHALL BE INSTALLED INVERSE TO WHAT IS SHOWN IN THESE PLANS
 MOUNTING TO TOWER WILL BE SITE SPECIFIC
 DAYMARK TO BE ASSEMBLED IN TWO SEPARATE PARTS FOR EASIER TRANSPORTATION AND/OR INSTALLATION

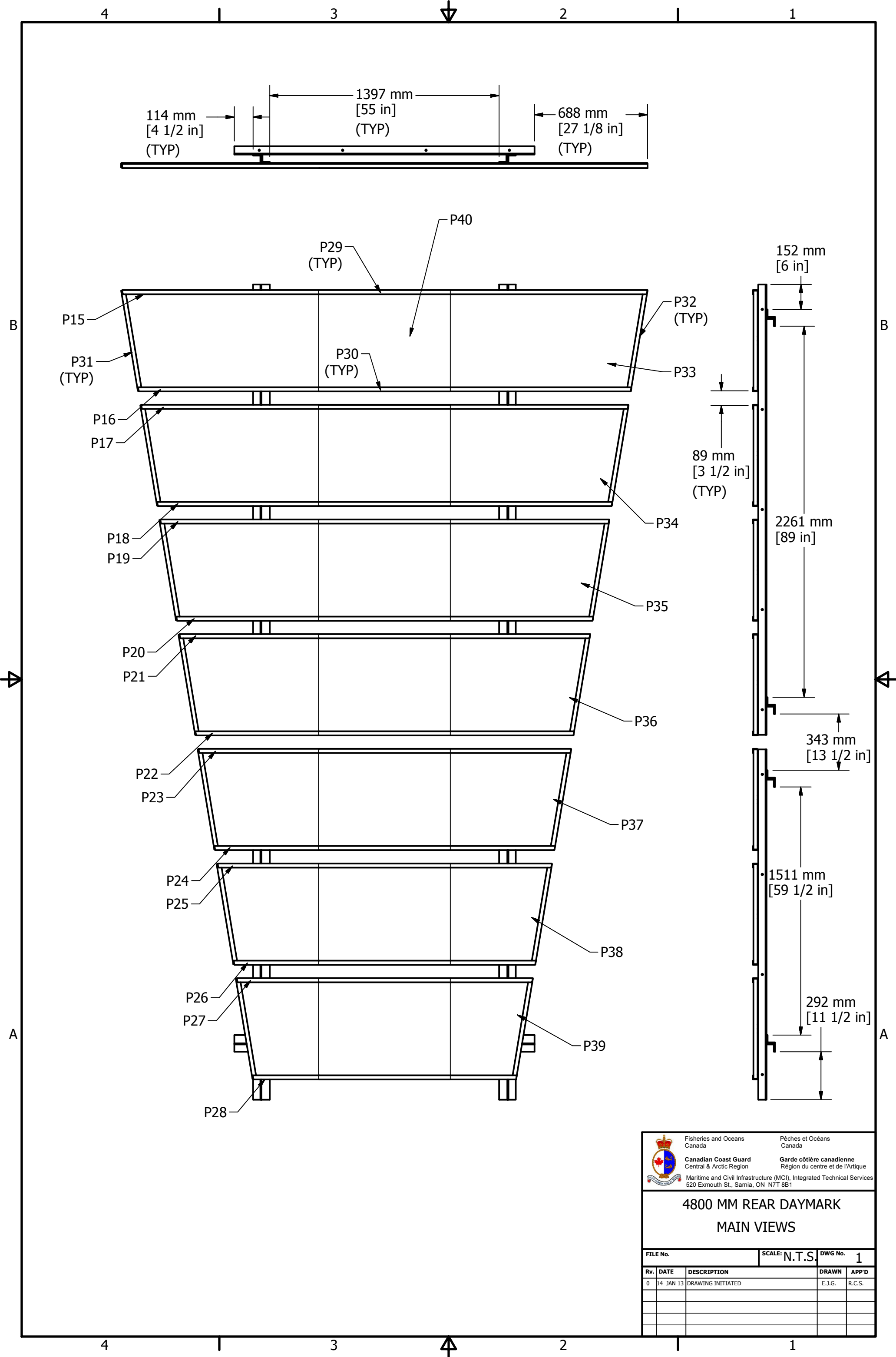
 Fisheries and Oceans Canada		Pêches et Océans Canada	
 Canadian Coast Guard Central & Arctic Region		Garde côtière canadienne Région du centre et de l'Arctique	
Maritime and Civil Infrastructure (MCI), Integrated Technical Services 520 Exmouth St., Sarnia, ON N7T 8B1			
4800 MM REAR DAYMARK PARTS LIST AND STRUCTURAL NOTES			
FILE No.		SCALE: N.T.S.	DWG No. 0
Rv.	DATE	DESCRIPTION	DRAWN APP'D
0	14 JAN 13	DRAWING INITIATED	E.J.G. R.C.S.


4

3

2

1



 Fisheries and Oceans Canada		Pêches et Océans Canada	
Canadian Coast Guard Central & Arctic Region		Garde côtière canadienne Région du centre et de l'Arctique	
Maritime and Civil Infrastructure (MCI), Integrated Technical Services 520 Exmouth St., Sarnia, ON N7T 8B1			
4800 MM REAR DAYMARK MAIN VIEWS			
FILE No.	SCALE: N.T.S.	DWG No.	1
Rv.	DATE	DESCRIPTION	DRAWN APP'D
0	14 JAN 13	DRAWING INITIATED	E.J.G. R.C.S.

4

3

2

1

3/8" x 1 1/4" CAP SCREWS
CONNECTING P24 TO
ALUM SHEETS (TYP)

3/8" x 1 1/4" CAP SCREWS
CONNECTING P33 TO P31/P32
(TYP)

P41

51 mm
[2 in]

279 mm
[11 in]
(TYP)

305 mm
[12 in]
(TYP)

P1

P43 (TYP)

P2

P3

25 mm
[1 in]
(TYP)

114 mm
[4 1/2 in]
(TYP)

P4

P5

P6

P7

P8

P9

P42

P10

P11

P12

P13

140 mm
[5 1/2 in]

140 mm
[5 1/2 in]

P14

1549 mm
[61 in]

140 mm
[5 1/2 in]

B

B

A


A

4

3

2

1

 Fisheries and Oceans Canada		Pêches et Océans Canada	
Canadian Coast Guard Central & Arctic Region		Garde côtière canadienne Région du centre et de l'Arctique	
Maritime and Civil Infrastructure (MCI), Integrated Technical Services 520 Exmouth St., Sarnia, ON N7T 8B1			
4800 MM REAR DAYMARK REAR ASSEMBLY INSTRUCTIONS			
FILE No.	SCALE: N.T.S.	DWG No.	2
Rv.	DATE	DESCRIPTION	DRAWN
0	14 JAN 13	DRAWING INITIATED	E.J.G.
			R.C.S.