



RETURN BIDS TO:

RETOURNER LES SOUMISSIONS À:

Bid Receiving Public Works and Government
Services Canada/Réception des soumissions Travaux publics et Services gouvernementaux Canada
See herein for bid submission
instructions/

Voir la présente pour les
instructions sur la présentation
d'une soumission

NA

Manitoba

SOLICITATION AMENDMENT MODIFICATION DE L'INVITATION

The referenced document is hereby revised; unless otherwise
indicated, all other terms and conditions of the Solicitation
remain the same.

Ce document est par la présente révisé; sauf indication contraire,
les modalités de l'invitation demeurent les mêmes.

Comments - Commentaires

Vendor/Firm Name and Address

Raison sociale et adresse du
fournisseur/de l'entrepreneur

Issuing Office - Bureau de distribution

Public Works and Government Services
Canada/Réception des soumissions Travaux publics et
Services gouvernementaux Canada
Government of Canada Building
101 - 22nd Street East
Suite 110
Saskatoon
Saskatche
S7K 0E1

Title - Sujet abrication d'une cage à ours	
Solicitation No. - N° de l'invitation 5P426-190696/A	Amendment No. - N° modif. 001
Client Reference No. - N° de référence du client 5P426-190696	Date 2020-04-17
GETS Reference No. - N° de référence de SEAG PW-\$STN-190-5294	
File No. - N° de dossier STN-9-42117 (190)	CCC No./N° CCC - FMS No./N° VME
Solicitation Closes - L'invitation prend fin at - à 02:00 PM on - le 2020-05-12	
Time Zone Fuseau horaire Central Daylight Saving Time CDT	
F.O.B. - F.A.B. Plant-Usine: <input type="checkbox"/> Destination: <input checked="" type="checkbox"/> Other-Autre: <input type="checkbox"/>	
Address Enquiries to: - Adresser toutes questions à: Mack, Wayne	Buyer Id - Id de l'acheteur stn190
Telephone No. - N° de téléphone (306) 241-6435 ()	FAX No. - N° de FAX (306) 975-5397
Destination - of Goods, Services, and Construction: Destination - des biens, services et construction: Parcs Canada Parc national Elk Island 1-54401 RR203 Fort Saskatchewan (Alberta) T8L 0V3	

Instructions: See Herein

Instructions: Voir aux présentes

Delivery Required - Livraison exigée	Delivery Offered - Livraison proposée
Vendor/Firm Name and Address Raison sociale et adresse du fournisseur/de l'entrepreneur	
Telephone No. - N° de téléphone Facsimile No. - N° de télécopieur	
Name and title of person authorized to sign on behalf of Vendor/Firm (type or print) Nom et titre de la personne autorisée à signer au nom du fournisseur/ de l'entrepreneur (taper ou écrire en caractères d'imprimerie)	
Signature	Date

N° de l'invitation - Sollicitation No.
5P426-190696/A
N° de réf. du client - Client Ref. No.
5P426-190696

N° de la modif - Amd. No.
001
File No. - N° du dossier
STN-9-42117

Id de l'acheteur - Buyer ID
STN190
N° CCC / CCC No./ N° VME - FMS


Insérer

Dessins n° 1001 à 1006 ci-joints



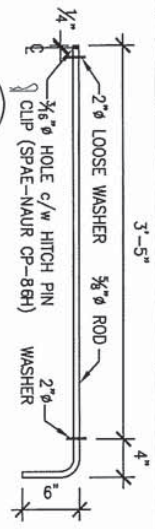
- NOTES:
1. FLAT EXPANDED MESH USED TO MINIMIZE INJURIES TO THE BEARS CLAWS OR TEETH. DO NOT SUBSTITUTE ANY OTHER MESH.
 2. CAGE BODY TO BE CONSTRUCTED OF TWO 4" X 8" SHEETS OF STEEL PLATE,(14 GAUGE TOP, 12 GAUGE BOTTOM), AND TWO 36 X 8" SHEETS OF $\frac{1}{2}$ " #13 F FLAT EXPANDED METAL SHEET.
 3. UNLESS NOTED OTHERWISE ALL WELDS SHALL BE 1/4" FILLET WELDS.
 4. ALL WELDING SHALL CONFORM TO CSA W59-M AND BE PERFORMED BY WELDERS CURRENTLY QUALIFIED UNDER CSA W59-M.

* SEE DRAWING 1003 FOR ITEM DETAILS, AND 1004 FOR ITEM NUMBER DESCRIPTIONS.

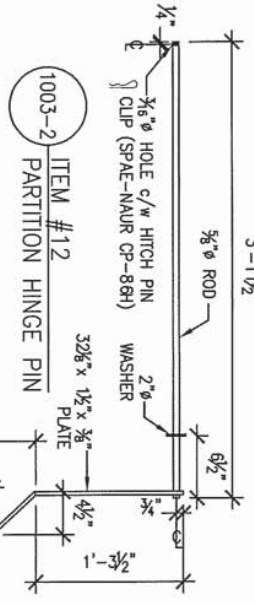
 Ministry of Natural Resources	PRODUCT CAMBRIAN DESIGN BEAR TRAP			
	DRAWING TITLE SIDE ELEVATION			
NORTHWEST REGION ENGINEERING SERVICES	SCALE AS SHOWN		DATE JAN. 10/05	
	DIM. BY BCD	CHKD. BY KCB	DWG. No. 1001	REV. 0/0



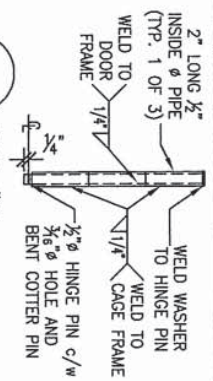
SCALE		DATE	
AS..SHOWN		JAN.10/05	
DRAWN BY	CHECKED BY	DWG. No.	
BCD	KCB	1002	
		REV. <table border="1"> <tr> <td>0</td> </tr> </table>	0
0			



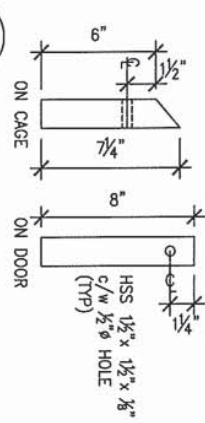
1003-1 ITEM #13
PARTITION LOCK PIN



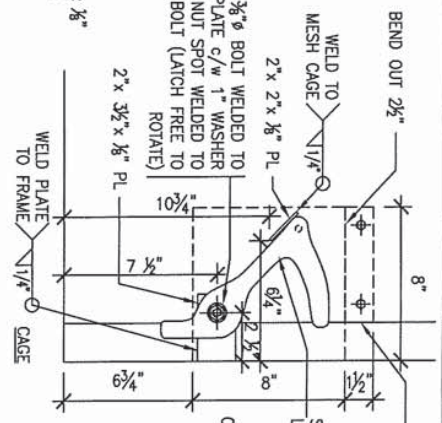
1003-2 ITEM #12
PARTITION HINGE PIN



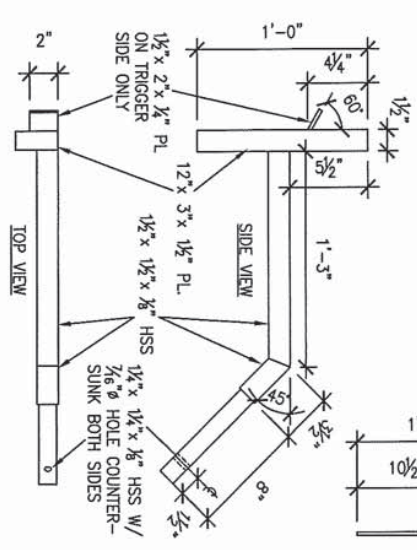
1003-4 ITEM #7
HINGES



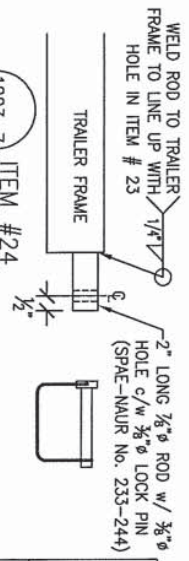
1003-5 ITEM #17
WEIGHTED ARM HOLDERS



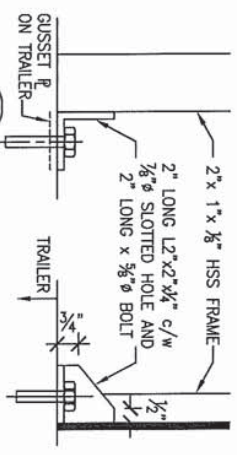
1003-8 ITEM #22
LATCH



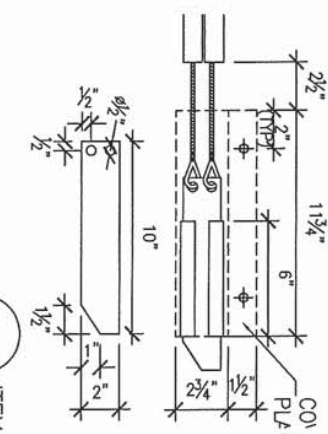
1003-3 ITEM #16
WEIGHTED ARM



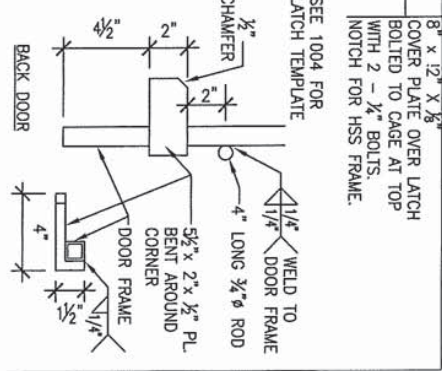
1003-7 ITEM #24
LOCK ROD



1003-6 ITEM #26
TRAILER BOLT DOWNS

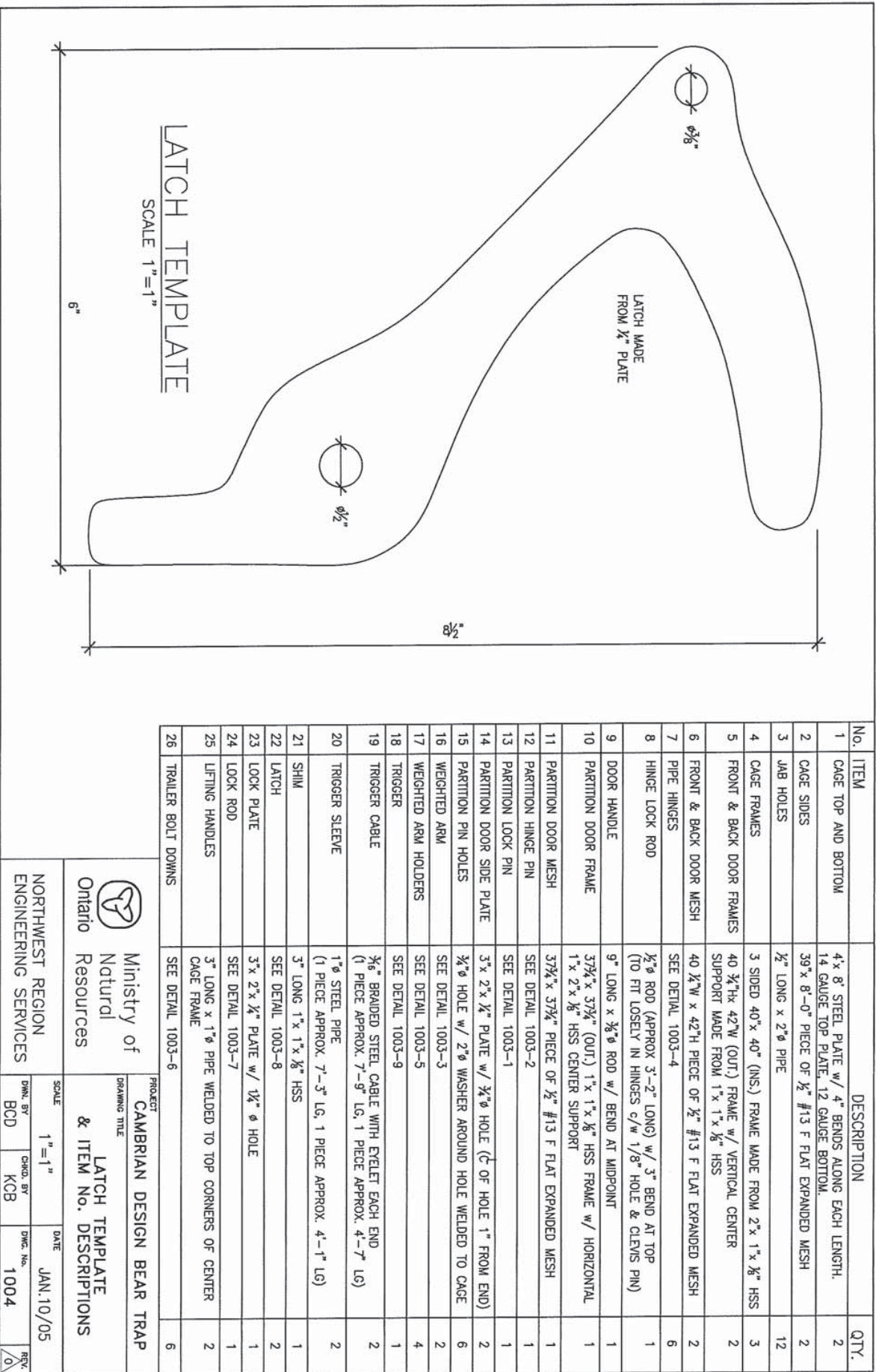


1003-9 ITEM #18
TRIGGER




1003-8 ITEM #22
LATCH

		PROJECT CAMBRIAN DESIGN BEAR TRAP	
DRAWING TITLE Ontario Natural Resources		DETAILS	
SCALE	N.T.S.	DATE	JAN. 10/05
DRAWN BY	BCD	CHECKED BY	KCB
NORTHWEST REGION ENGINEERING SERVICES		DWG. NO.	1003
		REV.	0



No.	ITEM	DESCRIPTION	QTY.
1	CAGE TOP AND BOTTOM	4' x 8' STEEL PLATE w/ 4" BENDS ALONG EACH LENGTH. 14 GAUGE TOP PLATE, 12 GAUGE BOTTOM.	2
2	CAGE SIDES	39' x 8'-0" PIECE OF 1/2" #13 F FLAT EXPANDED MESH	2
3	JAB HOLES	1/2" LONG x 2" PIPE	12
4	CAGE FRAMES	3 SIDED 40' x 40' (INS.) FRAME MADE FROM 2' x 1' x 1/8" HSS	3
5	FRONT & BACK DOOR FRAMES	40 3/4" x 42" (OUT.) FRAME w/ VERTICAL CENTER SUPPORT MADE FROM 1' x 1' x 1/8" HSS	2
6	FRONT & BACK DOOR MESH	40 1/4" x 42" PIECE OF 1/2" #13 F FLAT EXPANDED MESH	2
7	PIPE HINGES	SEE DETAIL 1003-4	6
8	HINGE LOCK ROD	1/2" ROD (APPROX 3'-2" LONG) w/ 3" BEND AT TOP (TO FIT LOSELY IN HINGES c/w 1/8" HOLE & CLEVIS PIN)	1
9	DOOR HANDLE	9" LONG x 3/8" ROD w/ BEND AT MIDPOINT	1
10	PARTITION DOOR FRAME	37 1/4" x 37 1/4" (OUT.) 1' x 1' x 1/8" HSS FRAME w/ HORIZONTAL 1' x 2' x 1/8" HSS CENTER SUPPORT	1
11	PARTITION DOOR MESH	37 1/4" x 37 1/4" PIECE OF 1/2" #13 F FLAT EXPANDED MESH	1
12	PARTITION HINGE PIN	SEE DETAIL 1003-2	1
13	PARTITION LOCK PIN	SEE DETAIL 1003-1	1
14	PARTITION DOOR SIDE PLATE	3' x 2' x 1/4" PLATE w/ 3/4" HOLE (C' OF HOLE 1" FROM END)	2
15	PARTITION PIN HOLES	3/4" HOLE w/ 2" WASHER AROUND HOLE WELDED TO CAGE	6
16	WEIGHTED ARM	SEE DETAIL 1003-3	2
17	WEIGHTED ARM HOLDERS	SEE DETAIL 1003-5	4
18	TRIGGER	SEE DETAIL 1003-9	1
19	TRIGGER CABLE	3/8" BRAIDED STEEL CABLE WITH EYELET EACH END (1 PIECE APPROX. 7'-9" LG, 1 PIECE APPROX. 4'-7" LG)	2
20	TRIGGER SLEEVE	1" STEEL PIPE (1 PIECE APPROX. 7'-3" LG, 1 PIECE APPROX. 4'-1" LG)	2
21	SHIM	3" LONG 1' x 1' x 1/8" HSS	1
22	LATCH	SEE DETAIL 1003-8	2
23	LOCK PLATE	3' x 2' x 1/4" PLATE w/ 1/4" HOLE	1
24	LOCK ROD	SEE DETAIL 1003-7	1
25	LIFTING HANDLES	3" LONG x 1" PIPE WELDED TO TOP CORNERS OF CENTER CAGE FRAME	2
26	TRAILER BOLT DOWNS	SEE DETAIL 1003-6	6



Ontario
Ministry of
Natural
Resources

PROJECT
CAMBRIAN DESIGN BEAR TRAP

DRAWING TITLE
LATCH TEMPLATE
& ITEM No. DESCRIPTIONS

NORTHWEST REGION
ENGINEERING SERVICES

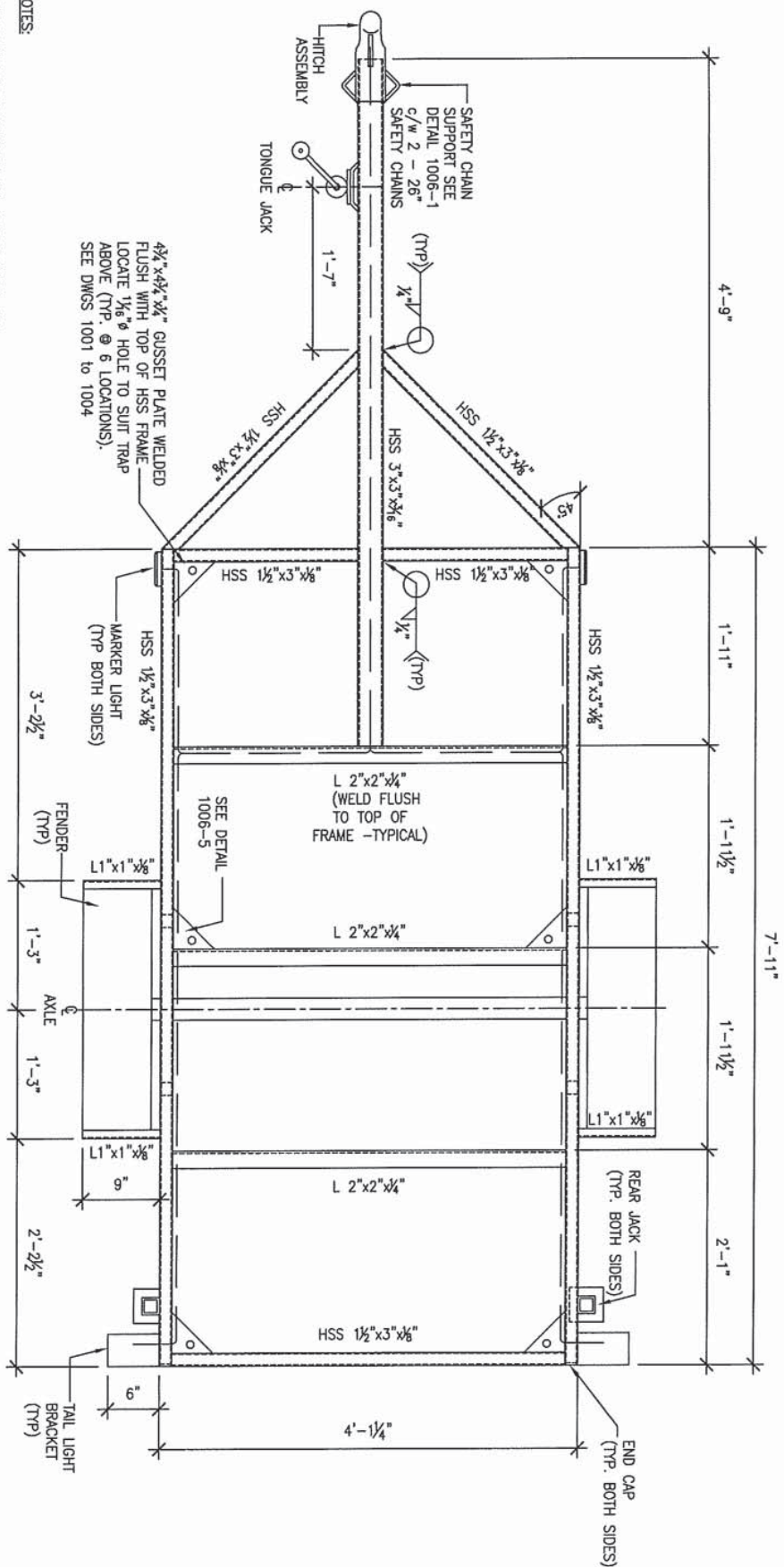
SCALE
1" = 1'

DRAWN BY
BCD

DATE
JAN. 10/05

CHECKED BY
KCB

REV.
1004



4 1/2\" x 4 1/2\" x 1/4\" GUSSET PLATE WELDED FLUSH WITH TOP OF HSS FRAME LOCATE 1 1/2\" Ø HOLE TO SUIT TRAP ABOVE (TYP. @ 6 LOCATIONS). SEE DWGS 1001 to 1004

HSS 1 1/2\" x 3\" x 3/8\" MARKER LIGHT (TYP. BOTH SIDES)

L 2\" x 2\" x 1/4\" (WELD FLUSH TO TOP OF FRAME - TYPICAL)

L 2\" x 2\" x 1/4\"

L 2\" x 2\" x 1/4\"

HSS 1 1/2\" x 3\" x 3/8\"

4\" - 1 1/4\"

END CAP (TYP. BOTH SIDES)


REAR JACK (TYP. BOTH SIDES)

TAIL LIGHT BRACKET (TYP)

PLAN
SCALE: 1\" = 1'-0"

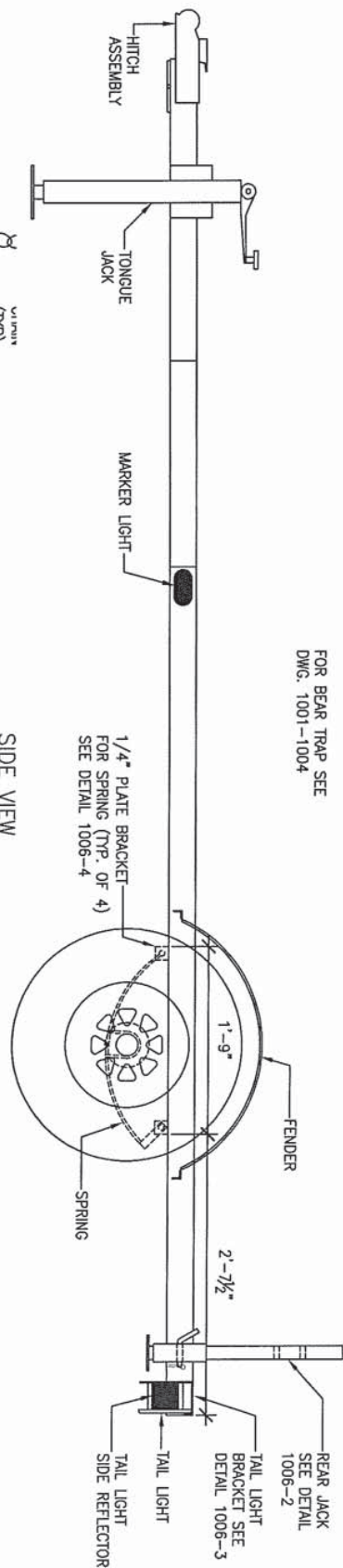
- NOTES:
1. UNLESS NOTED OTHERWISE ALL WELDS SHALL BE 1/4\" FILLET WELDS.
 2. ALL WELDING SHALL CONFORM TO CSA W59-M AND BE PERFORMED BY WELDERS CURRENTLY QUALIFIED UNDER CSA W59-M.
 3. FASTEN WIRING TO SIDES OF HSS 1 1/2\" x 3\" x 3/8\" AND L2\" x 2\" x 1/4\", AND RUN INSIDE OF HSS 3\" x 3\" x 3/8\". ALL WIRING RECD IS INCLUDED IN THE LIGHT KIT c/w INSTRUCTIONS.

PATH OF WIRING.

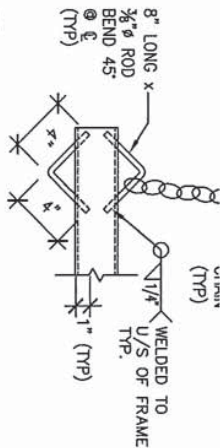
 Ministry of Natural Resources Ontario		PROJECT TRAILER	
NORTHWEST REGION ENGINEERING SERVICES		DRAWING TITLE PLAN	
SCALE 1\" = 1'-0"	DATE FEB. 11/04	DWG. BY BCD	DWG. NO. 1005
		CHKD. BY KCB	REV. 0

FOR TRAP SEE DWG. 1001-1004

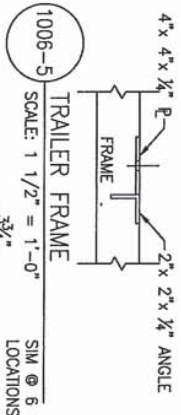
FOR BEAR TRAP SEE
DWG. 1001-1004



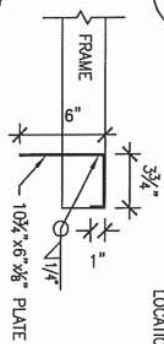
SIDE VIEW
SCALE: 1"=1'-0"



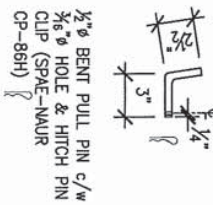
1006-1 SAFETY CHAIN SUPPORT DETAIL
SCALE: 1 1/2" = 1'-0"



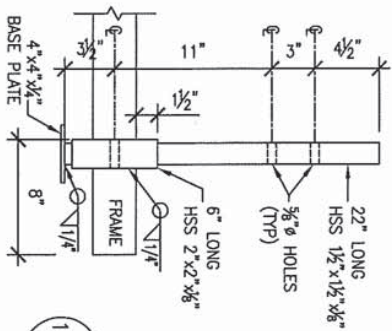
1006-5 TRAILER FRAME
SCALE: 1 1/2" = 1'-0"
SIM @ 5 LOCATIONS



1006-3 TAIL LIGHT BRACKET DETAIL
SCALE: 1 1/2" = 1'-0"
2 REQ'D



1006-2 REAR JACK DETAIL
SCALE: 1 1/2" = 1'-0"
2 REQ'D



1006-4 SPRING BRACKET DETAIL
SCALE: 3" = 1'-0"
4 REQ'D

PARTS LIST

PART	QTY.	DESCRIPTION
AXLE	1	2000 lb STRAIGHT AXLE 60" HUB FACE & 1 1/2" SPINDLES
HUB ASSEMBLY	2	1000 lb 5 BOLT HUB ASSEMBLY c/w 1 1/2" BEARING KIT
SPRINGS	2	2000 lb SPRING SET - 3 LEAFS 21" DOUBLE EYE.
TIRE & WHEEL	2	ST205/75D14 TIRE AND 5 BOLT RIM.
FENDER	2	8"x28" SQUARE TYPE FENDER
HITCH ASSEMBLY	1	2"x3" TRAILER HITCH ASSEMBLY c/w TWO 26" SAFETY CHAINS
TONGUE JACK	1	2000 lb TRAILER TONGUE JACK c/w MOUNTING TUBE
LIGHT KIT	2	SUBMERSIBLE TYPE TRAILER LIGHT KIT c/w TWO MARKER LIGHTS

Ministry of
Natural
Resources

NORTHWEST REGION
ENGINEERING SERVICES

PROJECT: TRAILER

DRAWING TITLE: SIDE VIEW, DETAILS & PARTS LIST

SCALE: AS SHOWN

DWG. BY: BCD

CHECKED BY: KCB

DATE: FEB. 11/04

DWG. NO.: 1006

REV: 0