



RETURN BIDS TO:

RETOURNER LES SOUMISSIONS À:

Bid Receiving PWGSC/TPSGC reception des
soumissions

Victory Building/Édifice Victory

Room 310/pièce 310

269 Main Street/269 rue Main

Winnipeg

Manitoba

R3C 1B3

Bid Fax: (204) 983-0338

**SOLICITATION AMENDMENT
MODIFICATION DE L'INVITATION**

The referenced document is hereby revised; unless otherwise
indicated, all other terms and conditions of the Solicitation
remain the same.

Ce document est par la présente révisé; sauf indication contraire,
les modalités de l'invitation demeurent les mêmes.

Comments - Commentaires

Vendor/Firm Name and Address

Raison sociale et adresse du
fournisseur/de l'entrepreneur

Issuing Office - Bureau de distribution

Public Works and Government Services Canada -
Western Region

Victory Building/Édifice Victory

Room 310/pièce 310

269 Main Street/269 rue Main

Winnipeg

Manitoba

R3C 1B3

Title - Sujet Furniture	
Solicitation No. - N° de l'invitation ET025-203226/A	Amendment No. - N° modif. 001
Client Reference No. - N° de référence du client PSPC-ET025-203226	Date 2020-04-24
GETS Reference No. - N° de référence de SEAG PW-\$WPG-006-11014	
File No. - N° de dossier WPG-9-42217 (006)	CCC No./N° CCC - FMS No./N° VME
Solicitation Closes - L'invitation prend fin at - à 02:00 PM on - le 2020-05-12	Time Zone Fuseau horaire Central Daylight Saving Time CDT
F.O.B. - F.A.B. Plant-Usine: <input type="checkbox"/> Destination: <input checked="" type="checkbox"/> Other-Autre: <input type="checkbox"/>	
Address Enquiries to: - Adresser toutes questions à: Graham, Danielle	Buyer Id - Id de l'acheteur wpg006
Telephone No. - N° de téléphone (204) 292-2872 ()	FAX No. - N° de FAX (204) 983-7796
Destination - of Goods, Services, and Construction: Destination - des biens, services et construction: 400 St Mary Ave Winnipeg MB R3C 4K5	

Instructions: See Herein

Instructions: Voir aux présentes

Delivery Required - Livraison exigée	Delivery Offered - Livraison proposée
Vendor/Firm Name and Address Raison sociale et adresse du fournisseur/de l'entrepreneur	
Telephone No. - N° de téléphone Facsimile No. - N° de télécopieur	
Name and title of person authorized to sign on behalf of Vendor/Firm (type or print) Nom et titre de la personne autorisée à signer au nom du fournisseur/ de l'entrepreneur (taper ou écrire en caractères d'imprimerie)	
Signature	Date

La **modification n° 1** vise à répondre aux questions des soumissionnaires et modifier l'invitation à soumissionner **# ET025-203226/A** comme suit:

De nouveau plan d'étage sont fournis.

- 1. Mise à jour du CUIGdC pour # 7 et 8 – Catégorie 2 :**
1bSPSCLGA242454XKXX
1bSPSCLGL242466XKXX
- 2. Quel type d'alimentation électrique est requis?**
Module d'alimentation. Situé sous le radiateur près du panneau alimentaire.
- 3. Quel quantité de port de données/alimentation et requis pour chaque poste de travail?**
2 ports de données et 2 ports d'alimentations

TOUTES LES AUTRES CONDITIONS ET MODALITÉS DEMEURENT INCHANGÉES

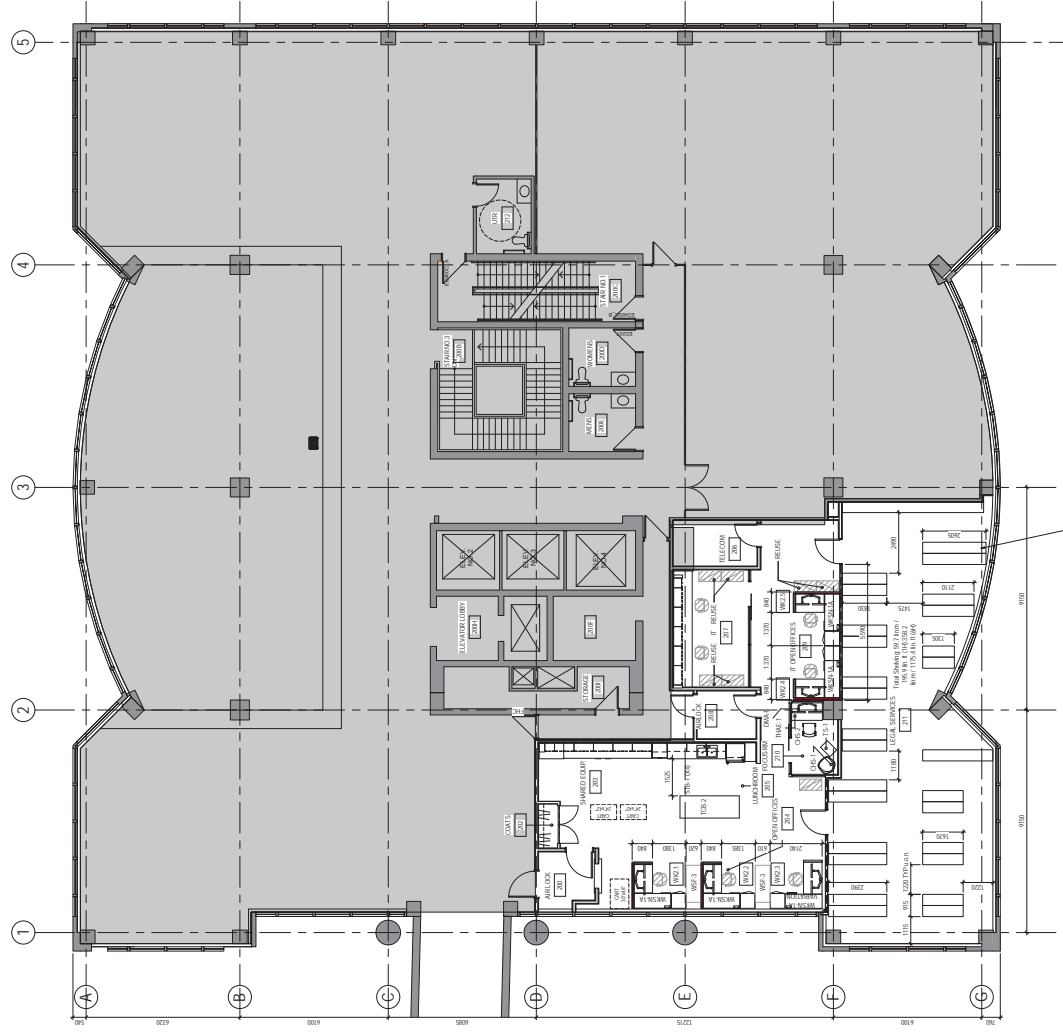
[illegible]PUBLIC SERVICES AND
PROCUREMENT CANADA

Project	Project
JUSTICE CANADA 400 St. Mary Avenue,	

Designed by	Company
Drawn by	Detailed by
CD	
Approved by	Approved on
LN	
PW GSC Project Manager	Administrative de Proiect 3950C
Drawn by	Technical details

CATEGORY 1, 2, 5
FURNITURE PLAN -
SECOND FLOOR

Project no./No. du projet	R.07 4363.001
Drawing no./No. du dessin	REV1.1






1 CATEGORY 1, 2, 5 FURNITURE PLAN - 2ND FLOOR
REV.1/1 1:100

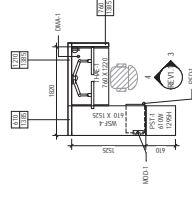
[illegible]

CRITICAL ISSUE

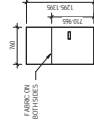
1. ASSUME ALL PANELS TO BE FABRIC BOTH SIDES.
2. PANEL FABRIC TO BE ONE GRADE ABOVE MINIMUM.

LEGEND:

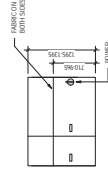
- | POWERED PANEL | NOT IN CONTRACT | NEW ITEM |
|---|---|---|
|  |  |  |



2 WKS-1A Rev 1
REV1.1 1:50



3 WKS-1A, 760mm PANEL TYP.

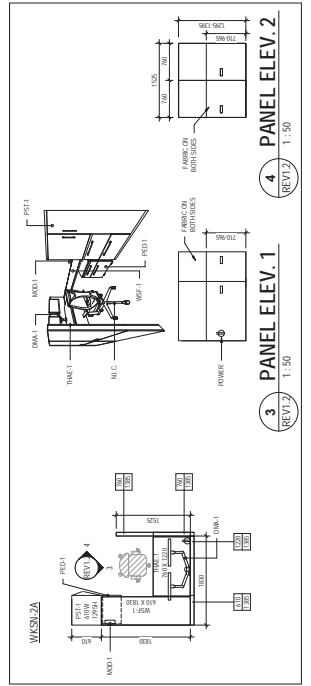
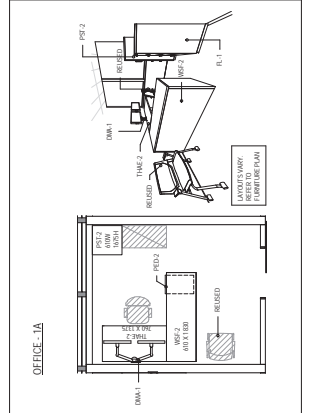
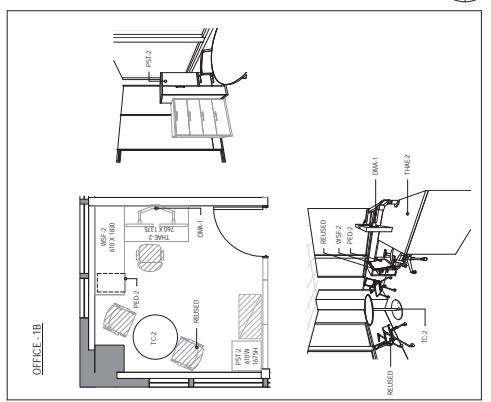


4 WKS-1A, 1820mm POWER PANEL TYP. REV1.1 1:50



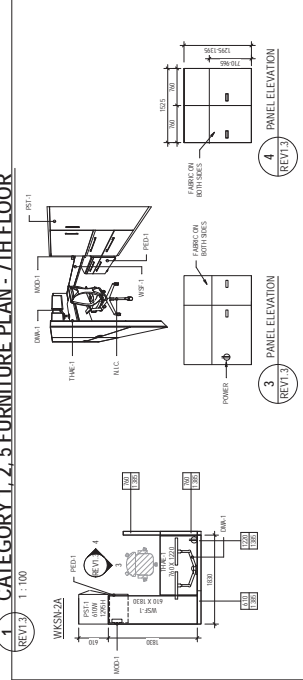
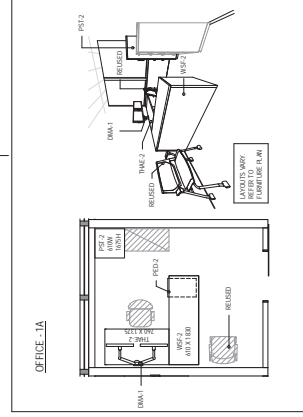
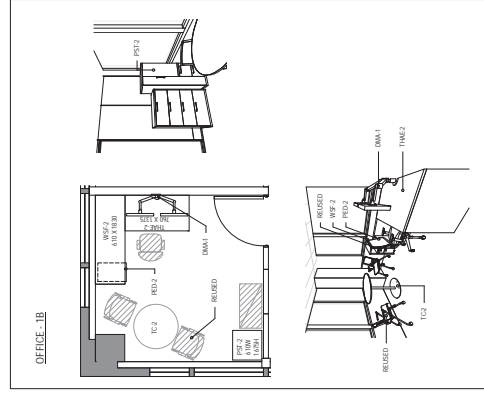
Room Name	Room No.	Room Type	Room Size	Room Description	Room Notes
Office 1A	101	Office	10.00	Office 1A	Office 1A
Office 1B	102	Office	10.00	Office 1B	Office 1B
Office 1C	103	Office	10.00	Office 1C	Office 1C
Office 1D	104	Office	10.00	Office 1D	Office 1D
Office 1E	105	Office	10.00	Office 1E	Office 1E
Office 1F	106	Office	10.00	Office 1F	Office 1F
Office 1G	107	Office	10.00	Office 1G	Office 1G
Office 1H	108	Office	10.00	Office 1H	Office 1H
Office 1I	109	Office	10.00	Office 1I	Office 1I
Office 1J	110	Office	10.00	Office 1J	Office 1J
Office 1K	111	Office	10.00	Office 1K	Office 1K
Office 1L	112	Office	10.00	Office 1L	Office 1L
Office 1M	113	Office	10.00	Office 1M	Office 1M
Office 1N	114	Office	10.00	Office 1N	Office 1N
Office 1O	115	Office	10.00	Office 1O	Office 1O
Office 1P	116	Office	10.00	Office 1P	Office 1P
Office 1Q	117	Office	10.00	Office 1Q	Office 1Q
Office 1R	118	Office	10.00	Office 1R	Office 1R
Office 1S	119	Office	10.00	Office 1S	Office 1S
Office 1T	120	Office	10.00	Office 1T	Office 1T
Office 1U	121	Office	10.00	Office 1U	Office 1U
Office 1V	122	Office	10.00	Office 1V	Office 1V
Office 1W	123	Office	10.00	Office 1W	Office 1W
Office 1X	124	Office	10.00	Office 1X	Office 1X
Office 1Y	125	Office	10.00	Office 1Y	Office 1Y
Office 1Z	126	Office	10.00	Office 1Z	Office 1Z

- GENERAL NOTES
- ALL WORK SHALL BE IN ACCORDANCE WITH THE CANADIAN STANDARDS FOR CONSTRUCTION.
 - ALL WORK SHALL BE IN ACCORDANCE WITH THE CANADIAN STANDARDS FOR CONSTRUCTION.



LEGEND

	POWERED PANEL
	NOT IN CONTRACT
	NEW ITEM



CATEGORY 1, 2, 5 FURNITURE PLAN - 7TH FLOOR