



Product Selector - 1SXP210003C0201

ABB Molded Case Circuit Breakers Formula, Tmax XT & Tmax T ranges

Power and productivity
for a better world™



Tmax T ranges

General Information	
Introduction	4/2
Circuit breakers for power distribution	4/4
Catalog number explanation	4/6
Ordering details	
T5, 300/400/600A, 600VAC	4/13
T6, 600/800A, 600VAC	4/15
Accessories	4/17
T7, 1000/1200A, 600VAC	4/24
T7M, 1000/1200A, 600VAC	4/27
Accessories	4/30
T8, 1600/2000/2500/3000A, 600VAC	4/36
Accessories	4/39

Tmax T ranges

Introduction

Tmax T5 and T6 are the molded case circuit breakers with the best performance/size ratio on the market. The possibilities are practically unlimited, thanks to their dedicated and specific ranges, advanced electronics, as well as a complete and standardized range of accessories.

The top quality materials and innovative construction techniques used by ABB mean Tmax circuit breakers can guarantee truly exceptional performance. For example, T4 and T5 have an interrupting capacity up to 150 kA at 480 VAC.

The series of electronic trip units, equipped with latest generation technology, offers solutions exclusive to ABB. T4, T5 and T6 have the same depth, simplifying their use in switchboards, and also have a complete, standardized and unified range of accessories, simplifying selection, making them more flexible and reducing stock item count.

4

The new Tmax T7, available up to 1200 A either with a manual operating mechanism or motor operator, was conceived with a revolutionary design for circuit breakers of this type: advanced electronics, exceptional performance and new installation and accessory solutions.

Tmax T7's flexibility is absolutely exceptional: it can be installed both vertically and horizontally (in both fixed and draw out versions) with all types of terminals and a new, faster and safer racking-out system for moving parts. Additionally, cabling is facilitated by the reduced height.

The new rapid accessory wiring system is great news. There are no loose wires inside the circuit breaker. Connection to the external circuit is rapid, simple and safe and no screws for terminating the external power supply cables are needed.

The new cable interlock provides notable benefits in terms of flexible applications. By using this accessory it is possible to interlock two circuit breakers in any position and to interlock a T7 with an Emax power circuit breaker as well.

Special attention has been paid to the electronics and the results are the PR231, PR232, PR331 and PR332 new interchangeable electronic trip units, with modules and rating-plugs which can be replaced by the customer.

The PR231 and PR232 trip units, with dip-switches for setting the protection thresholds, offer LEDs to signal tripping for each protection function: so the reason for circuit breaker tripping can always be easily found.

The PR332 is decidedly ahead of its time fitted with a large graphic display, it allows all the information needed to be displayed simply and clearly. It also offers advanced protection functions. For example, the exclusive data logger function allows all the events and values before the fault to be recorded for later analysis.

The Tmax family can't be completed without the Tmax T8 size which is available from 1600A up to 3000A. It is also equipped with the same electronic trip units as the Tmax T7, thereby guaranteeing extremely high performances able to satisfy all installation requirements. Adequately sized for the performances offered. The Tmax T8 is able to interrupt short-circuit currents as high as 125kA (480Vac) and 100kA (600Vac)



Tmax T ranges

Introduction

There are the 4 series of Classic Tmax UL/CSA available:

- T5 available from 300A up to 600A
- T6 available from 600A up to 800A
- T7 and T7M available from 1000 up to 1200A
- T8 available from 1600 up to 3000A

300A, 400A, 600A - TMA/ELT - 600Vac



Tmax T5

600A, 800A - TMA/ELT - 600Vac



Tmax T6

1000A, 1200A - ELT - 600Vac



Tmax T7

1600A, 2000A, 2500A, 3000A - ELT - 600Vac



Tmax T8

Tmax T ranges

Circuit breakers for power distribution

4

Molded case circuit breakers (MCCB)			T5				
Frame Size		[A]	400-600 ⁽¹⁾				
Rated		80% rated	■				
Poles		[No.]	2 ⁽²⁾ 3, 4				
Rated voltage	(AC) 50-60Hz	[V]	600				
	(DC)	[V]	600				
Versions			Fixed, Plug-in, Withdrawable				
Interrupting ratings			N	S	H	L	V
240 V (AC)		[kA]	65	100	150	200	200
480 V (AC)		[kA]	25	35	65	100	150
600 V (AC)		[kA]	18	25	35	65	100
500 V (DC) 2 poles in series		[kA]	25	35	50	65	100
600 V (DC) 3 poles in series		[kA]	16	25	35	50	65
Mechanical life		[No. Operations]	20000				
Dimensions - Fixed (Width x Depth x Height)	3 poles	[mm]/[in]	[139.95 x 103.4 x 205] / [5.51 x 4.07 x 8.07]				
	4 poles	[mm]/[in]	[185.93 x 103.4 x 205] / [7.32 x 4.07 x 8.07]				
Weight	Fixed 3/4 poles	[kg]/[lbs]	[3.25 / 4.15] / [7.17 - 9.15]				
	Plug-in 3/4 poles	[kg]/[lbs]	[5.15 / 6.65] / [11.35 / 14.66]				
	Withdrawable 3/4 poles	[kg]/[lbs]	[5.40 / 6.90] / [11.90 / 15.21]				
Trip units for power distribution							
TMA			■				
Electronic PR221DS			■				
Electronic PR222DS			■				
Electronic Modbus PR222DS			■				
Electronic PR231			—				
Electronic PR232			—				
Electronic PR331			—				
Electronic PR332			—				
Interchangeable protection trip units			■				

⁽¹⁾ T5, 600A only available with Electronic protection.

⁽²⁾ 2p version only available with "N" versions. Size is the same as a 3p.

Motor protection ⁽¹⁾			T5				
Frame Size		[A]	400-600				
Poles		[No.]	3				
Rated service voltage	(AC) 50-60Hz	[V]	600				
	(DC)	[V]	—				
Versions			Fixed, Plug-in, Withdrawable				
Interrupting Rating levels			N, S, H, L				
Trip units for motor protection							
Electronic PR221DS-I			■				

Molded case disconnect switches (MCS)			T5				
Frame Size		[A]	400 - 600				
Poles		[No.]	3, 4				
Rated voltage	(AC) 50-60Hz	[V]	600				
	(DC)	[V]	600				
Versions			Fixed, Plug-in, Withdrawable				
Interrupting Rating levels			N, S, H, L, V				
Magnetic Override		[A]	5000				

Tmax T ranges

Circuit breakers for power distribution

T6				T7, T7M			T8
800				1000 - 1200			1600-2000-2500-3000
■				■			■
3, 4				3, 4			3, 4
600				600			600
600				—			—
Fixed, Withdrawable				Fixed, Withdrawable			Fixed
N	S	H	L	S	H	L	V
65	100	200	200	65	100	150	125
35	50	65	100	50	65	100	125
20	25	35	42	25	50	65	100
35	35	50	65	—	—	—	—
20	20	35	50	—	—	—	—
20000				10000			15000
[210 x 103.5 x 268] / [8.26 x 4.07 x 10.55]				[210 x 154 ⁽³⁾ x 268] / [8.26 x 6.06 ⁽³⁾ x 10.55]			[427 x 282 x 382] - [16.8 x 11.2 x 15]
[280 x 103.5 x 268] / [11.02 x 4.07 x 10.55]				[280 x 154 ⁽³⁾ x 268] / [11.02 x 6.06 ⁽³⁾ x 10.55]			[553 x 282 x 382] - [21.77 x 11.2 x 15]
[9.5 / 12] / [20.94 / 26.45]				T7: [9.7 / 12.5] / [21.4 / 27.6], T7M: [11 / 14] / [24.25 / 30.9]			[73 / 95] / [161 / 209] ⁽⁴⁾
—				—			—
[12.1 / 15.1] / [26.68 / 33.29]				T7: [29.7 / 39.6] / [32 / 42.6], T7M: [32 / 42.6] / [70.6 / 93.9]			—
■				—			—
■				—			—
■				—			—
■				—			—
—				■			■
—				■			■
—				■			■
—				■			■
■				■			■

⁽³⁾ T7M motorized version depth: 178mm / 7in

⁽⁴⁾ T8 3000A: [107 / 140] / [236 / 309]

T6	T7, T7M	T8
800	—	—
3	—	—
600	—	—
—	—	—
Fixed, Withdrawable	—	—
N, S, H, L	—	—
■	—	—

T6	T7, T7M	T8
800	1200	2000-2500-3000
3, 4	3, 4	3, 4
600	600	600
600	—	—
Fixed, Withdrawable	Fixed, Withdrawable	Fixed
H	H	V
10000	20000	40000

Tmax T ranges

Catalog number explanation

Tmax T5-T6 Part number explanation

T5	N	400	T	W	-4
1,2	3	4,5,6	7	8	9

1,2 - Tmax prefix

T5	Tmax T5
T6	Tmax T6

4

3 - Breaking capacity at 600Vac

	T5	T6
N	18 kA	20 kA
S	25 kA	25 kA
H	35 kA	35 kA
L	65 kA	42 kA
V	100 kA	—
NQ	100% rated version 18 kA	100% rated version 20 kA
SQ	100% rated version 25 kA	100% rated version 25 kA
HQ	100% rated version 35 kA	100% rated version 35 kA
LQ	100% rated version 65 kA	100% rated version 42 kA
VQ	100% rated version 100 kA	—

4,5,6 - Amperage

300	300A (T5 only)
400	400A (T5 only)
600	600A (T5 Electronic version & T6)
800	800A (T6 only)

7 - Protection trip unit

I	Thermal-Magnetic protection adjustable (T5 only)
B	Electronic PR221 LS/I protection
C	Electronic PR222 LSI protection
D	Molded case switch
E	Electronic PR222 LSIG protection
E5	Electronic PR221 Instantaneous protection (MCP)

8 - Connection

W	Without lugs
----------	--------------

9 - Number of poles

-2	2 pole version (T5 only with N interrupting rating)
-4	4 pole version (Only available for N and H interrupting rating)
Blank	3 pole version

Tmax T ranges

Catalog number explanation

Tmax T7 Part number explanation

T7S	B	2	E	C	0	0	0	0	0	0	X	X
1,2,3	4	5	6	7	8	9	10	11	12	13	14	15

1,2,3 - Frame size

T7S	25 kA @ 600Vac
T7H	50 kA @ 600Vac
T7L	65 kA @ 600Vac

4 - Version

0	FIXED Molded case switch
B	FIXED Molded case circuit breaker
Q	FIXED 100% rated molded case circuit breaker
W	WITHDRAWABLE Molded case circuit breaker ⁽¹⁾
X	WITHDRAWABLE 100% rated molded case circuit breaker ⁽¹⁾
Y	WITHDRAWABLE Molded case switch ⁽¹⁾

⁽¹⁾ Fixed part and accessories to be ordered separately. Please consult your local ABB office.

5 - Frame size

1	1000A, 3p Standard version (T7)
2	1200A, 3p Standard version (T7)
P	1000A, 3p Motorized version (T7M)
B	1200A, 3p MOTORIZED version (T7M)
C	1000A, 4p Standard version (T7)
D	1200A, 4p Standard version (T7)
E	1000A, 4p Motorized version (T7M)
F	1200A, 4p Motorized version (T7M)

6 - Rating plug

0	No rating plug. Molded case switch version only
A	400A
B	600A
C	800A
D	1000A
E	1200A

7 - Electronic protection type

X	No protection (molded case switch version only)
B	PR231/P-LSI trip unit (dip switch)
C	PR232/P-LSI trip unit (dip switch)
E	PR331/P-LSIG trip unit (dip switch)
P	PR332/P-LI trip unit (LCD + keypad)
R	PR332/P-LSI trip unit (LCD + keypad)
S	PR332/P-LSIG trip unit (LCD + keypad)

8 - Trip unit accessories (for PR332 only)

0	None
A	PR330/V measuring module
B	PR330/D-M Modbus communication module
C	A+B (measuring + communication)

Tmax T ranges

Catalog number explanation

4

9 - Closing coils (YC) voltage selection

0	No remote closing required
A	24V ac/dc
B	30V ac/dc
C	48V ac/dc
D	60V ac/dc
E	110...120V ac/dc
F	120...127V ac/dc
G	220...240V ac/dc
H	240...250V ac/dc
J	380...400Vac
K	415...440Vac

10 - Auxiliary contacts selection

0	No auxiliary contacts required
A	1 form C + 1 BA 400Vac (T7 only)
B	1 form C + 1 BA 24Vdc (T7 only)
C	2 form C 400Vac
D	2 form C 24Vdc
E	S51 tip unit alarm contact 250Vac (T7 only)
F	S51 tip unit alarm contact 250Vac (T7M only)
G	3 form C + 1 BA 400Vac (T7 only)
H	3 form C + 1 BA 24Vdc (T7 only)
I	2 form C 400Vac + S51 (T7 only)
J	2 form C 400Vac + S51 (T7M only)
K	2 form C 24Vdc + S51 (T7 only)
L	2 form C 24Vdc + S51 (T7M only)
M	4 form C 400Vac (T7M only)
N	4 form C 24Vdc (T7M only)

11 - Spring charging motor voltage selection (T7M version)

0	No remote charging required
A	24V...30V ac/dc
B	48...60V ac/dc
C	100...130V ac/dc
D	220...250V ac/dc
E	380...415V ac/dc

12 - Opening coils (YO) voltage selection

0	No remote opening required
A	24V ac/dc
B	30V ac/dc
C	48V ac/dc
D	60V ac/dc
E	110...120V ac/dc
F	120...127V ac/dc
G	220...240V ac/dc
H	240...250V ac/dc
J	380...400Vac
K	415...440Vac

Tmax T ranges

Catalog number explanation

13 - Undervoltage opening coils (YU) voltage selection

0	No remote opening required
A	24V ac/dc
B	30V ac/dc
C	48V ac/dc
D	60V ac/dc
E	110...120V ac/dc
F	120...127V ac/dc
G	220...240V ac/dc
H	240...250V ac/dc
J	380...400Vac
K	415...440Vac

14 - Mechanical accessories

X	No mechanical accessory required
A	Mechanical operation counter

15 - Locking provisions

X	No locking required
A	Keylock
B	Button guard
C	Padlock provision (OPEN)
D	Position lock (Withdrawable on connected / test / disconnected positions)
E	Position lock (Withdrawable on test / disconnected positions)

Tmax T ranges

Catalog number explanation

Tmax T8 Part number explanation

T8V	B	E	H	C	0	0	0	0	0	0	X	X
1,2,3	4	5	6	7	8	9	10	11	12	13	14	15

1,2,3 - Frame size

T8V 100 kA @ 600Vac

4 - Version

0 FIXED Molded case switch
B FIXED Molded case circuit breaker
Q FIXED 100% rated Molded case circuit breaker ⁽¹⁾

⁽¹⁾ 2500A & 3000A with vertical rear connection only.

5 - Frame size

C 1600A 3p
D 2000A 3p
E 2500A 3p
F 3000A 3p
G 1600A 4p
H 2000A 4p
I 2500A 4p
J 3000A 4p

6 - Rating plug

0 No rating plug (molded case switch version only)
D 1000A
E 1200A
F 1600A
G 2000A
H 2500A
J 3000A

7 - Electronic protection type

C PR331/P-LSI (dip switch)
D No protection (molded case switch version)
E PR331/P-LSIG trip unit (dip switch)
P PR332/P-LI trip unit (LCD + keypad)
R PR332/P-LSI trip unit (LCD + keypad)
S PR332/P-LSIG trip unit (LCD + keypad)

8 - Trip unit accessories (for PR332 only)

0 None
B Voltage measuring module
C Modbus communication module

Tmax T ranges

Catalog number explanation

9 - Closing coils (YC) voltage selection

0	No remote closing required
A	24Vdc
B	30V ac/dc
C	48V ac/dc
D	60V ac/dc
E	110...120V ac/dc
F	120...127V ac/dc
G	220...240V ac/dc
H	240...250V ac/dc
J	380...400Vac
K	440Vac

10 - Spring charging motor voltage selection (T7M version)

0	No remote charging required
A	24V...30V ac/dc
B	48...60V ac/dc
C	100...130V ac/dc
D	220...250V ac/dc

11 - Auxiliary contacts selection

0	No auxiliary contacts required (supplied as standard with PR332 trip unit)
A	4 auxiliary contacts
B	4 auxiliary contacts 24Vdc
C	UVR de-energized contact NO
D	UVR de-energized contact NC
E	4 auxiliary contacts + UVR de-energized NO
F	4 auxiliary contacts + UVR de-energized NC
G	4 auxiliary contacts 24Vdc + UVR de-energized NO
H	4 auxiliary contacts 24Vdc + UVR de-energized NC

12 - Opening coils (YO) voltage selection

0	No remote opening required
A	24Vdc
B	30V ac/dc
C	48V ac/dc
D	60V ac/dc
E	110...120V ac/dc
F	120...127V ac/dc
G	220...240V ac/dc
H	240...250V ac/dc
J	380...400Vac
K	440Vac

Tmax T ranges

Catalog number explanation

4

13 - Undervoltage opening coils (YU) or Second opening coil (YO2) voltage selection

O	No remote opening required
A	YU - 24Vdc
B	YU - 30V ac/dc
C	YU - 48V ac/dc
D	YU - 60V ac/dc
E	YU - 110...120V ac/dc
F	YU - 120...127V ac/dc
G	YU - 220...240V ac/dc
H	YU - 240...250V ac/dc
J	YU - 380...400Vac
K	YU - 440Vac
L	YO2 - 24Vdc
M	YO2 - 30V ac/dc
N	YO2 - 48V ac/dc
P	YO2 - 60V ac/dc
Q	YO2 - 110...120V ac/dc
R	YO2 - 120...127V ac/dc
S	YO2 - 220...240V ac/dc
T	YO2 - 240...250V ac/dc
U	YO2 - 380...400Vac
V	YO2 - 440Vac

14 - Mechanical accessories and extra contacts

X	No extra accessory required
A	Mechanical operation counter
B	Bell alarm
C	Bell alarm with remote reset 24...30V ac/dc
D	Bell alarm with remote reset 110...130V ac/dc
E	Bell alarm with remote reset 220...240V ac/dc
F	Mechanical counter + Bell alarm
G	Mechanical counter + Bell alarm with remote reset 24...30V ac/dc
H	Mechanical counter + Bell alarm with remote reset 110...130V ac/dc
J	Mechanical counter + Bell alarm with remote reset 220...240V ac/dc

15 - Locking provisions

X	No locking required
A	Keylock
B	Button guard
C	Padlock provision (OPEN)
D	Keylock + button guard
E	Keylock + padlock provision (OPEN)

Tmax T ranges

Ordering details T5

Tmax T5 Thermal Magnetic protection (Molded case circuit breaker)

Standard version

Thermal magnetic adjustable trip unit				IC	N	S	H	L	V
Frame size [A]	Therm. adj. [A]	Mag. adj. [A]	Poles	Rating (600V)	18 kA Part number	25 kA Part number	35 kA Part number	65 kA Part number	100 kA Part number
300	210...300A	1500...3000A	2		T5N300TW-2	—	—	—	—
			3		T5N300TW	T5S300TW	T5H300TW	T5L300TW	T5V300TW
			4		T5N300TW-4	T5S300TW-4	T5H300TW-4	T5L300TW-4	T5V300TW-4
400	280...400A	2000...4000A	2		T5N400TW-2	—	—	—	—
			3		T5N400TW	T5S400TW	T5H400TW	T5L400TW	T5V400TW
			4		T5N400TW-4	T5S400TW-4	T5H400TW-4	T5L400TW-4	T5V400TW-4

100% rated version

Thermal magnetic adjustable trip unit				IC	NQ	SQ	HQ	LQ	VQ
Frame size [A]	Therm. adj. [A]	Mag. adj. [A]	Poles	Rating (600V)	18 kA Part number	25 kA Part number	35 kA Part number	65 kA Part number	100 kA Part number
300	210...300A	1500...3000A	3		T5NQ300TW	T5SQ300TW	T5HQ300TW	T5LQ300TW	T5VQ300TW
400	280...400A	2000...4000A	3		T5NQ400TW	T5SQ400TW	T5HQ400TW	T5LQ400TW	T5VQ400TW

Tmax T5 Electronic protection (Molded case circuit breaker)

Standard PR221DS LS/I version

Electronic trip unit				IC	N	S	H	L	V
Frame size [A]	L adj. [A]	I adj. [A]	Poles	Rating (600V)	18 kA Part number	25 kA Part number	35 kA Part number	65 kA Part number	100 kA Part number
300	120...300A	300...3000A	2		T5N300BW-2	—	—	—	—
			3		T5N300BW	T5S300BW	T5H300BW	T5L300BW	T5V300BW
			4		T5N300BW-4	T5S300BW-4	T5H300BW-4	T5L300BW-4	T5V300BW-4
400	160...400A	400...4000A	2		T5N400BW-2	—	—	—	—
			3		T5N400BW	T5S400BW	T5H400BW	T5L400BW	T5V400BW
			4		T5N400BW-4	T5S400BW-4	T5H400BW-4	T5L400BW-4	T5V400BW-4
600	240...600A	600...6000A	3		T5N600BW	T5S600BW	T5H600BW	T5L600BW	T5V600BW

Standard PR222DS LSI version

Electronic trip unit				IC	N	S	H	L	V
Frame size [A]	L adj. [A]	I adj. [A]	Poles	Rating (600V)	18 kA Part number	25 kA Part number	35 kA Part number	65 kA Part number	100 kA Part number
300	120...300A	300...3000A	2		T5N300CW-2	—	—	—	—
			3		T5N300CW	T5S300CW	T5H300CW	T5L300CW	T5V300CW
			4		T5N300CW-4	T5S300CW-4	T5H300CW-4	T5L300CW-4	T5V300CW-4
400	160...400A	400...4000A	2		T5N400CW-2	—	—	—	—
			3		T5N400CW	T5S400CW	T5H400CW	T5L400CW	T5V400CW
			4		T5N400CW-4	T5S400CW-4	T5H400CW-4	T5L400CW-4	T5V400CW-4
600	240...600A	600...6000A	3		T5N600CW	T5S600CW	T5H600CW	T5L600CW	T5V600CW

Standard PR222DS LSIG version

Electronic trip unit				IC	N	S	H	L	V
Frame size [A]	L adj. [A]	I adj. [A]	Poles	Rating (600V)	18 kA Part number	25 kA Part number	35 kA Part number	65 kA Part number	100 kA Part number
300	120...300A	300...3000A	2		T5N300EW-2	—	—	—	—
			3		T5N300EW	T5S300EW	T5H300EW	T5L300EW	T5V300EW
			4		T5N300EW-4	T5S300EW-4	T5H300EW-4	T5L300EW-4	T5V300EW-4
400	160...400A	400...4000A	2		T5N400EW-2	—	—	—	—
			3		T5N400EW	T5S400EW	T5H400EW	T5L400EW	T5V400EW
			4		T5N400EW-4	T5S400EW-4	T5H400EW-4	T5L400EW-4	T5V400EW-4
600	240...600A	600...6000A	3		T5N600EW	T5S600EW	T5H600EW	T5L600EW	T5V600EW

Tmax T ranges

Ordering details T5

100% rated PR221DS LS/I version

Electronic trip unit				IC	NQ	SQ	HQ	LQ	VQ
Frame size [A]	L adj. [A]	I adj. [A]	Poles	Rating (600V)	18 kA Part number	25 kA Part number	35 kA Part number	65 kA Part number	100 kA Part number
300	120...300A	300...3000A	3		T5NQ300BW	T5SQ300BW	T5HQ300BW	T5LQ300BW	T5VQ300BW
400	160...300A	400...4000A	3		T5NQ400BW	T5SQ400BW	T5HQ400BW	T5LQ400BW	T5VQ400BW

100% rated PR222DS LSI version

Electronic trip unit				IC	NQ	SQ	HQ	LQ	VQ
Frame size [A]	L adj. [A]	I adj. [A]	Poles	Rating (600V)	18 kA Part number	25 kA Part number	35 kA Part number	65 kA Part number	100 kA Part number
300	120...300A	300...3000A	3		T5NQ300CW	T5SQ300CW	T5HQ300CW	T5LQ300CW	T5VQ300CW
400	160...300A	400...4000A	3		T5NQ400CW	T5SQ400CW	T5HQ400CW	T5LQ400CW	T5VQ400CW

100% rated PR222DS LSIG version

Electronic trip unit				IC	NQ	SQ	HQ	LQ	VQ
Frame size [A]	L adj. [A]	I adj. [A]	Poles	Rating (600V)	18 kA Part number	25 kA Part number	35 kA Part number	65 kA Part number	100 kA Part number
300	120...300A	300...3000A	3		T5NQ300EW	T5SQ300EW	T5HQ300EW	T5LQ300EW	T5VQ300EW
400	160...300A	400...4000A	3		T5NQ400EW	T5SQ400EW	T5HQ400EW	T5LQ400EW	T5VQ400EW

Tmax T5 Magnetic only protection (Motor control protection)

Standard magnetic only PR221DS-I version

Electronic trip unit				IC	N	S	H	L	V
Frame size [A]	L adj. [A]	I adj. [A]	Poles	Rating (600V)	18 kA Part number	25 kA Part number	35 kA Part number	65 kA Part number	100 kA Part number
300	—	300...3000A	3		T5N300E5W	T5S300E5W	T5H300E5W	T5L300E5W	T5V300E5W
400	—	400...4000A	3		T5N400E5W	T5S400E5W	T5H400E5W	T5L400E5W	T5V400E5W
600	—	600...6000A	3		T5N600E5W	T5S600E5W	T5H600E5W	T5L600E5W	T5V600E5W

Tmax T5 Molded case switch

No protection, magnetic override only

No trip unit				IC	N	S	H	L	V
Frame size [A]	L adj. [A]	Mag. Override [A]	Poles	Rating (600V)	18 kA Part number	25 kA Part number	35 kA Part number	65 kA Part number	100 kA Part number
400	—	5000A	3		T5N400DW	T5S400DW	T5H400DW	T5L400DW	T5V400DW
			4		T5N400DW-4	T5S400DW-4	T5H400DW-4	T5L400DW-4	T5V400DW-4
600	—	5000A	3		T5N600DW	T5S600DW	T5H600DW	T5L600DW	T5V600DW

Tmax T ranges

Ordering details T6

Tmax T6 Thermal Magnetic protection (Molded case circuit breaker)

Standard version

Thermal magnetic adjustable trip unit				IC Rating (600V)	N 20 kA Part number	S 25 kA Part number	H 35 kA Part number	L 42 kA Part number
Frame size [A]	Therm. adj. [A]	Mag. adj. [A]	Poles					
600	420...600A	3000...6000A	3		T6N600TW	T6S600TW	T6H600TW	T6L600TW
			4		T6N600TW-4	—	T6H600TW-4	—
800	560...800A	4000...8000A	3		T6N800TW	T6S800TW	T6H800TW	T6L800TW
			4		T6N800TW-4	—	T6H800TW-4	—

100% rated version

Thermal magnetic adjustable trip unit				IC Rating (600V)	NQ 20 kA Part number	SQ 25 kA Part number	HQ 35 kA Part number	LQ 42 kA Part number
Frame size [A]	Therm. adj. [A]	Mag. adj. [A]	Poles					
600	420...600A	3000...6000A	3		T6NQ600TW	T6SQ600TW	T6HQ600TW	T6LQ600TW
800	560...800A	4000...8000A	3		T6NQ800TW	T6SQ800TW	T6HQ800TW	T6LQ800TW

Tmax T6 Electronic protection (Molded case circuit breaker)

Standard PR221DS LS/I version

Electronic trip unit				IC Rating (600V)	N 20 kA Part number	S 25 kA Part number	H 35 kA Part number	L 42 kA Part number
Frame size [A]	L adj. [A]	I adj. [A]	Poles					
600	240...600A	600...6000A	3		T6N600BW	T6S600BW	T6H600BW	T6L600BW
			4		T6N600BW-4	—	T6H600BW-4	—
800	320...800A	800...8000A	3		T6N800BW	T6S800BW	T6H800BW	T6L800BW
			4		T6N800BW-4	—	T6H800BW-4	—

Standard PR222DS LSI version

Electronic trip unit				IC Rating (600V)	N 20 kA Part number	S 25 kA Part number	H 35 kA Part number	L 42 kA Part number
Frame size [A]	L adj. [A]	I adj. [A]	Poles					
600	240...600A	600...6000A	3		T6N600CW	T6S600CW	T6H600CW	T6L600CW
			4		T6N600CW-4	—	T6H600CW-4	—
800	320...800A	800...8000A	3		T6N800CW	T6S800CW	T6H800CW	T6L800CW
			4		T6N800CW-4	—	T6H800CW-4	—

Standard PR222DS LSIg version

Electronic trip unit				IC Rating (600V)	N 20 kA Part number	S 25 kA Part number	H 35 kA Part number	L 42 kA Part number
Frame size [A]	L adj. [A]	I adj. [A]	Poles					
600	240...600A	600...6000A	3		T6N600EW	T6S600EW	T6H600EW	T6L600EW
			4		T6N600EW-4	—	T6H600EW-4	—
800	320...800A	800...8000A	3		T6N800EW	T6S800EW	T6H800EW	T6L800EW
			4		T6N800EW-4	—	T6H800EW-4	—

Tmax T ranges

Ordering details T6

100% rated PR221DS LS/I version

Electronic trip unit				IC Rating (600V)	NQ 20 kA Part number	SQ 25 kA Part number	HQ 35 kA Part number	LQ 42 kA Part number
Frame size [A]	L adj. [A]	I adj. [A]	Poles					
600	240...600A	600...6000A	3		T6NQ600BW	T6SQ600BW	T6HQ600BW	T6LQ600BW
800	320...800A	800...8000A	3		T6NQ800BW	T6SQ800BW	T6HQ800BW	T6LQ800BW

100% rated PR222DS LSI version

Electronic trip unit				IC Rating (600V)	NQ 20 kA Part number	SQ 25 kA Part number	HQ 35 kA Part number	LQ 42 kA Part number
Frame size [A]	L adj. [A]	I adj. [A]	Poles					
600	240...600A	600...6000A	3		T6NQ600CW	T6SQ600CW	T6HQ600CW	T6LQ600CW
800	320...800A	800...8000A	3		T6NQ800CW	T6SQ800CW	T6HQ800CW	T6LQ800CW

100% rated PR222DS LSIG version

Electronic trip unit				IC Rating (600V)	NQ 20 kA Part number	SQ 25 kA Part number	HQ 35 kA Part number	LQ 42 kA Part number
Frame size [A]	L adj. [A]	I adj. [A]	Poles					
600	240...600A	600...6000A	3		T6NQ600EW	T6SQ600EW	T6HQ600EW	T6LQ600EW
800	320...800A	800...8000A	3		T6NQ800EW	T6SQ800EW	T6HQ800EW	T6LQ800EW

Tmax T6 Magnetic only protection (Motor control protection)

Standard magnetic only PR221DS-I version

Electronic trip unit				IC Rating (600V)	N 20 kA Part number	S 25 kA Part number	H 35 kA Part number	L 42 kA Part number
Frame size [A]	L adj. [A]	I adj. [A]	Poles					
600	—	600...6000A	3		T6N600E5W	T6S600E5W	T6H600E5W	T6L600E5W
800	—	800...8000A	3		T6N800E5W	T6S800E5W	T6H800E5W	T6L800E5W

Tmax T6 Molded case switch

No protection, magnetic override only

No trip unit				IC Rating (600V)	H 35 kA Part number
Frame size [A]	L adj. [A]	Mag. Override [A]	Poles		
800	—	10000A	3		T6H800DW
			4		T6H800DW-4

Tmax T ranges

T5-T6 Accessories



Plug-in base EF



Withdrawable base EF



Withdrawable conversion kit



Plug-in conversion kit



Connectors



Terminal covers

Fixed parts, conversion kits and accessories for fixed parts

Plug-in base only

Base type	T5		T5 (600A)	
	3p	4p	3p	4p
	Part number	Part number	Part number	Part number
Front extended terminals (EF)	KT5PFEF	KT5PFEF-4	KT5PFEF6	KT5PFEF6-4
Rear horizontal terminals (HR)	KT5PFHR	KT5PFHR-4	KT5PFHR6	KT5PFHR6-4
Rear vertical terminals (VR)	KT5PFVR	KT5PFVR-4	KT5PFVR6	KT5PFVR6-4

Withdrawable base only

Base type	T5		T5 (600A)		T6	
	3p	4p	3p	4p	3p	4p
	Part number	Part number	Part number	Part number	Part number	Part number
Front extended terminals (EF)	KT5WFEF	KT5WFEF-4	KT5WFEF6	KT5WFEF6-4	KT6WFEF	KT6WFEF-4
Rear horizontal terminals (HR)	KT5WFHR	KT5WFHR-4	KT5WFHR6	KT5WFHR6-4	KT6WFHR	KT6WFHR-4
Rear vertical terminals (VR)	KT5WFVR	KT5WFVR-4	KT5WFVR6	KT5WFVR6-4	KT6WFVR	KT6WFVR-4

Breaker conversion kits (does not include the base)

Kit type	T5		T5 (600A)		T6	
	3p	4p	3p	4p	3p	4p
	Part number	Part number	Part number	Part number	Part number	Part number
Kit to convert standard breaker to plug-in	KT5PMK	KT5PMK-4	KT5PMK6	KT5PMK6-4	—	—
Kit to convert standard breaker to withdrawable	KT5WMK	KT5WMK-4	KT5WMK6	KT5WMK6-4	KT6WMK	KT6WMK-4

Base connectors for electrical accessories

Accessory type	T5 - T6	
	Part number	
Shunt opening / Undervoltage release	KT6ADP-5	
Aux. contact 1C + 1BA	KT6ADP-6	
Aux. contact 3C + 1BA	KT6ADP-12	
Stored energy motor	KT6ADP-10	
Stored energy motor + shunt trip or undervoltage release	KT6ADP-10	

Loose terminal covers for base

Cover type	T5	
	3p	4p
	Part number	Part number
Spare terminal covers	KT5TCFP-3	KT5TCFP-4

Tmax T ranges

T5-T6 Accessories

4



SOR

Electrical operators

Shunt opening release (SOR)

Control voltage type	T5 - T6
	Part number
12Vdc	KT6S9
24...30V ac/dc	KT6S8
48...60V ac/dc	KT6S7
110...125V ac/dc	KT6S4
380...440Vac	KT6S3
220...250V ac/dc	KT6S2
480...500Vac	KT6S1

Shunt opening release with permanent supply (PS-SOR)

Control voltage type	T5 - T6
	Part number
24...30Vdc (low power consumption)	KT6SP4
110...120V ac/dc (low power consumption)	KT6SP8



UVR

Undervoltage opening release (UVR)

Control voltage type	T5 - T6
	Part number
24...30V ac/dc	KT6U8
48V ac/dc	KT6U7
60V ac/dc	KT6U5
110...125V ac/dc	KT6U4
380...440Vac	KT6U3
220...250V ac/dc	KT6U2
480...500Vac	KT6U1

Electrical signals

Standard auxiliary contacts (AUX)

Auxiliary contact type	T5	T6
	Part number	Part number
1 form C + 1 BA 250V ac/dc	KT6AS	KT6AS
1 form C + 1 BA (for PR222DS modbus trip units)	K5AS-E	KT6AS-E
2 form C 400Vac	KT6AS2	KT6AS2
3 form C + 1 BA 250Vac	KT6AS3	KT6AS3
3 form C + 1 BA 24Vdc	KT6AS3L	KT6AS3L
Early make contact for rotary handle	KT5EM	KT6EM
1 form C for RACKED-IN position 400V ac/dc	KT6AUP1	KT6AUP1
1 form C for RACKED-IN position 24Vdc	KT6AUP124C	KT6AUP124V
1 form C for RACKED-OUT position 400V ac/dc	KT6AUPP	KT6AUPP
1 form C for RACKED-OUT position 24Vdc	KT6AUPP24V	KT6AUPP24V
Manual / remote signal from motor operator	KT6MA	KT6MA



AUX



Early make AUX

Tmax T ranges

T5-T6 Accessories



MOE

Motor operators

Standard stored energy motor operators

Control voltage type	T5	T6
	Part number	Part number
24Vdc	KT5M8	KT6M8
48...60V ac/dc	KT5M7	KT6M7
110...125V ac/dc	KT5M4	KT6M4
380Vac	KT5M3	KT6M3
220...250V ac/dc	KT5M2	KT6M2

Stored energy motor operators with Modbus communication (IEC only)

Control voltage type	T5	T6
	Part number	Part number
24Vdc	KT5M8-E	KT6M8-E
48...60V ac/dc	KT5M7-E	KT6M7-E
110...125V ac/dc	KT5M4-E	KT6M4-E
380Vac	KT5M3-E	KT6M3-E
220...250V ac/dc	KT5M2-E	KT6M2-E

Rotary and flange handles

Breaker mounted rotary handle

Handle type	T5	T6
	Part number	Part number
Rotary handle for Fixed / Plug-in version breakers	KT5RH	KT6RH
Rotary handle for Withdrawable version breakers	KT5RHW	KT6RHW

Door mounted rotary handle, shaft and mechanism

Type	T5	T6
	Part number	Part number
Mechanism	KT5VD-M	KT6VD-M
NEMA 1 square handle	KT5VD-H	KT6VD-H
Shaft for NEMA 1 square handle	KT5VD-S	KT5VD-S
NEMA 1, 3R, 12 pistol handle (black)	OHB125J10B	OHB125J10B
NEMA 4, 4X pistol handle	OHB125L10B	OHB125L10B
Shaft for NEMA 1, 3R, 12 pistol handle	OXF10X500	OXF10X500



KT3VD-M + KT3VD-S + KT3VD-H



OHB pistol type handle

Tmax T ranges

T5-T6 Accessories

4



Flange handles

Type	T5
	Part number
Mechanism	MKCT5
NEMA 1, 3R, 12 grey painted handle	OHF1C12
NEMA 4, 4X nickel plated handle	OHF1C4
36in cable linkage (91cm)	OXCL136
48in cable linkage (122cm)	OXCL148
60in cable linkage (152cm)	OXCL160
72in cable linkage (183cm)	OXCL172
84in cable linkage (213cm)	OXCL184
96in cable linkage (244cm)	OXCL196
108in cable linkage (305cm)	OXCL1108



Locks

Mechanical / toggle lock

Lock type	T5	T6
	Part number	Part number
Toggle padlock prov. OPEN pos. for Fixed / Plug-in version	KT5FLD	KT6FLD
Toggle padlock prov. OPEN pos. for Withdrawable version	KT5FLDW	KT6FLDW

Keylock for rotary handle mechanism

Lock type	T5	T6
	Part number	Part number
Different keys, OPEN position	KT5KL-D	KT6KLFD
Same keys, OPEN position key #20005	KT5KL-20005	KT6KLFS-20005
Same keys, OPEN position key #20006	KT5KL-20006	KT6KLFS-20005
Same keys, OPEN position key #20007	KT5KL-20007	KT6KLFS-20005
Same keys, OPEN position key #20008	KT5KL-20008	KT6KLFS-20005

Keylock for motor operator

Lock type	T5	T6
	Part number	Part number
Different keys, OPEN position	KT5KL-MO-D	KT6KL-MO-D
Same keys, OPEN position key #20005	KT5KL-MO-20005	KT6KLFS-MO-20005
Same keys, OPEN position key #20006	KT5KL-MO-20006	KT6KLFS-MO-20005
Same keys, OPEN position key #20007	KT5KL-MO-20007	KT6KLFS-MO-20005
Same keys, OPEN position key #20008	KT5KL-MO-20008	KT6KLFS-MO-20005

Tmax T ranges

T5-T6 Accessories

Mechanical interlocks



Interlock mechanism and plates

Type	T5	T6
	Part number	Part number
Horizontal interlock	KT5MI-H	KT6MI-H
Vertical interlock	KT5MI-V	KT6MI-V
Adaptor plate (T4 + T4)	KT5MIP-A	—
Adaptor plate (T4 + T5 or T5 600 fixed)	KT5MIP-B	—
Adaptor plate (T4 + T5 600)	KT5MIP-C	—
Adaptor plate (T5 or T5 600 fixed + T5 or T5 600 fixed)	KT5MIP-D	—
Adaptor plate (T5 or T5 600 fixed + T5 600)	KT5MIP-E	—
Adaptor plate (T5 600 + T5 600)	KT5MIP-F	—

External Neutral CT



CT for neutral (requires X4 connector)

CT Type	T5	T6
	Part number	Part number
300A CT	KT5NCT-300	—
400A CT	KT5NCT-400	—
600A CT	KT5NCT-600	KT6NCT-600
800A CT	—	KT6NCT-800

X4 connector for CT

Connector type	T5 - T6
	Part number
X4 connector for fixed version breakers	KT6CX4
X4 connector for plug-in / withdrawable version breakers	KT6CX4-P

Extra compartment door flange



Flange type	T5	T6
	Part number	Part number
Compartment door flange Fixed version	KT5FCD	KT6FCD

Tmax T ranges

T5-T6 Accessories

4



Mechanical lug kits, covers and phase separators

FC CuAl kits (for copper or aluminium cables)

Type	T5		T6	
	3p Part number	4p Part number	3p Part number	4p Part number
1x 250 Kcmil up to 500 Kcmil (300A rated)	KT5300-3	KT5300-4	—	—
2x 3/0 up to 2x 250 Kcmil (400A rated) ⁽¹⁾	KT5400-3	KT5400-4	—	—
2x 3/0 up to 2x 500 Kcmil (600A rated)	KT5600-3	KT5600-4	—	—
2x 250 Kcmil up to 2x 500 Kcmil (600A rated)	—	—	KT6600-3	KT6600-4
3x 2/0 up to 3x 400 Kcmil (800A rated) ⁽¹⁾	—	—	KT6800-3	KT6800-4

⁽¹⁾ Comes with high profile terminal covers



EF front extended terminals (for bus bars)

Type	T5		T6	
	3p Part number	4p Part number	3p Part number	4p Part number
400A rated	KT5EF-3	KT5EF-4	—	—
800A rated	—	—	KT6EF-3	KT6EF-4



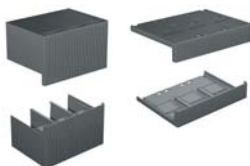
Rear terminals (for bus bars)

Type	T5		T6	
	3p Part number	4p Part number	3p Part number	4p Part number
400A rated	KT5R-3	KT5R-4	—	—
800A rated	—	—	KT6R-3	KT6R-4



Lug adaptor spare kit

Type	T5		T6	
	3p Part number	4p Part number	3p Part number	4p Part number
6 plugs and screws	KT5FC-6	—	KT6FC-6	—



Terminal shroud covers

Type	T5		T6	
	3p Part number	4p Part number	3p Part number	4p Part number
High profile	KT5HTC-3	KT5HTC-4	KT6HTC-3	KT6HTC-4
Low profile	KT5LTC-3	KT5LTC-4	KT6LTC-3	KT6LTC-4



Phase separators

Type	T5		T6	
	3p Part number	4p Part number	3p Part number	4p Part number
High profile	KT5PBH-3	KT5PBH-4	—	—
Low profile	KT5PBL-3	KT5PBL-4	KT6PBL-3	KT6PBL-4

Tmax T ranges

T5-T6 Accessories



Front display unit for PR222		
Type	T5	T6
	Part number	Part number
Display unit	KT5FDU	KT6FDU

Tmax T ranges

Ordering details T7

Tmax T7 Electronic protection (Molded case circuit breaker)

Standard PR231 LS/I version

Electronic trip unit				IC	S	H	L
Frame size [A]	L adj. [A]	I adj. [A]	Poles	Rating (600V)	25 kA Part number	50 kA Part number	65 kA Part number
1000	400...1000A	1000...10000A	3		T7S1000BW	T7H1000BW	T7L1000BW
			4		T7S1000BW-4	T7H1000BW-4	T7L1000BW-4
1200	480...1200A	1200...12000A	3		T7S1200BW	T7H1200BW	T7L1200BW
			4		T7S1200BW-4	T7H1200BW-4	T7L1200BW-4

Standard PR232 LSI version

Electronic trip unit				IC	S	H	L
Frame size [A]	L adj. [A]	I adj. [A]	Poles	Rating (600V)	25 kA Part number	50 kA Part number	65 kA Part number
1000	400...1000A	1000...12000A	3		T7S1000CW	T7H1000CW	T7L1000CW
			4		T7S1000CW-4	T7H1000CW-4	T7L1000CW-4
1200	480...1200A	1200...14400A	3		T7S1200CW	T7H1200CW	T7L1200CW
			4		T7S1200CW-4	T7H1200CW-4	T7L1200CW-4

Standard PR331 LSIG version

Electronic trip unit				IC	S	H	L
Frame size [A]	L adj. [A]	I adj. [A]	Poles	Rating (600V)	25 kA Part number	50 kA Part number	65 kA Part number
1000	400...1000A	1000...12000A	3		T7S1000EW	T7H1000EW	T7L1000EW
			4		T7S1000EW-4	T7H1000EW-4	T7L1000EW-4
1200	480...1200A	1200...14400A	3		T7S1200EW	T7H1200EW	T7L1200EW
			4		T7S1200EW-4	T7H1200EW-4	T7L1200EW-4

Standard PR332 LI version

Electronic trip unit				IC	S	H	L
Frame size [A]	L adj. [A]	I adj. [A]	Poles	Rating (600V)	25 kA Part number	50 kA Part number	65 kA Part number
1000	400...1000A	1000...15000A	3		T7S1000PW	T7H1000PW	T7L1000PW
			4		T7S1000PW-4	T7H1000PW-4	T7L1000PW-4
1200	480...1200A	1200...18000A	3		T7S1200PW	T7H1200PW	T7L1200PW
			4		T7S1200PW-4	T7H1200PW-4	T7L1200PW-4

Standard PR332 LSI version

Electronic trip unit				IC	S	H	L
Frame size [A]	L adj. [A]	I adj. [A]	Poles	Rating (600V)	25 kA Part number	50 kA Part number	65 kA Part number
1000	400...1000A	1000...15000A	3		T7S1000RW	T7H1000RW	T7L1000RW
			4		T7S1000RW-4	T7H1000RW-4	T7L1000RW-4
1200	480...1200A	1200...18000A	3		T7S1200RW	T7H1200RW	T7L1200RW
			4		T7S1200RW-4	T7H1200RW-4	T7L1200RW-4

Standard PR332 LSIG version

Electronic trip unit				IC	S	H	L
Frame size [A]	L adj. [A]	I adj. [A]	Poles	Rating (600V)	25 kA Part number	50 kA Part number	65 kA Part number
1000	400...1000A	1000...15000A	3		T7S1000SW	T7H1000SW	T7L1000SW
			4		T7S1000SW-4	T7H1000SW-4	T7L1000SW-4
1200	480...1200A	1200...18000A	3		T7S1200SW	T7H1200SW	T7L1200SW
			4		T7S1200SW-4	T7H1200SW-4	T7L1200SW-4

Tmax T ranges

Ordering details T7

100% rated PR231 LS/I version

Electronic trip unit				IC Rating (600V)	SQ 25 kA Part number	HQ 50 kA Part number	LQ 65 kA Part number
Frame size [A]	L adj. [A]	I adj. [A]	Poles				
1000	400...1000A	1000...10000A	3		T7SQ1000BW	T7HQ1000BW	T7LQ1000BW
1200	480...1200A	1200...12000A	3		T7SQ1200BW	T7HQ1200BW	T7LQ12000BW

100% rated PR232 LSI version

Electronic trip unit				IC Rating (600V)	SQ 25 kA Part number	HQ 50 kA Part number	LQ 65 kA Part number
Frame size [A]	L adj. [A]	I adj. [A]	Poles				
1000	400...1000A	1000...12000A	3		T7SQ1000CW	T7HQ1000CW	T7LQ1000CW
1200	480...1200A	1200...14400A	3		T7SQ1200CW	T7HQ1200CW	T7LQ12000CW

100% rated PR331 LSIG version

Electronic trip unit				IC Rating (600V)	SQ 25 kA Part number	HQ 50 kA Part number	LQ 65 kA Part number
Frame size [A]	L adj. [A]	I adj. [A]	Poles				
1000	400...1000A	1000...12000A	3		T7SQ1000EW	T7HQ1000EW	T7LQ1000EW
1200	480...1200A	1200...14400A	3		T7SQ1200EW	T7HQ1200EW	T7LQ12000EW

100% rated PR332 LI version

Electronic trip unit				IC Rating (600V)	SQ 25 kA Part number	HQ 50 kA Part number	LQ 65 kA Part number
Frame size [A]	L adj. [A]	I adj. [A]	Poles				
1000	400...1000A	1000...15000A	3		T7SQ1000PW	T7HQ1000PW	T7LQ1000PW
1200	480...1200A	1200...18000A	3		T7SQ1200PW	T7HQ1200PW	T7LQ12000PW

100% rated PR332 LSI version

Electronic trip unit				IC Rating (600V)	SQ 25 kA Part number	HQ 50 kA Part number	LQ 65 kA Part number
Frame size [A]	L adj. [A]	I adj. [A]	Poles				
1000	400...1000A	1000...15000A	3		T7SQ1000RW	T7HQ1000RW	T7LQ1000RW
1200	480...1200A	1200...18000A	3		T7SQ1200RW	T7HQ1200RW	T7LQ12000RW

100% rated PR332 LSIG version

Electronic trip unit				IC Rating (600V)	SQ 25 kA Part number	HQ 50 kA Part number	LQ 65 kA Part number
Frame size [A]	L adj. [A]	I adj. [A]	Poles				
1000	400...1000A	1000...15000A	3		T7SQ1000SW	T7HQ1000SW	T7LQ1000SW
1200	480...1200A	1200...18000A	3		T7SQ1200SW	T7HQ1200SW	T7LQ12000SW

Tmax T ranges

Ordering details T7

Tmax T7 Magnetic only protection (Motor control protection)

Standard magnetic only PR231-I version

Electronic trip unit				IC	S	H	L
Frame size [A]	L adj. [A]	I adj. [A]	Poles	Rating (600V)	25 kA Part number	50 kA Part number	65 kA Part number
1000	—	1000...10000A	3		T7S1000MW	T7H1000MW	T7L1000MW
1200	—	1200...12000A	3		T7S1200MW	T7H1200MW	T7L1200MW

4

Tmax T7 Molded case switch

No protection, magnetic override only

No trip unit				IC	H
Frame size [A]	L adj. [A]	Mag. Override [A]	Poles	Rating (600V)	50 kA Part number
1200	—	12000A	3		T7H1200DW
			4		T7H1200DW-4

Tmax T ranges

Ordering details T7M

Tmax T7M Electronic protection (Molded case circuit breaker)

Standard PR231 LS/I version

Electronic trip unit				IC Rating (600V)	S 25 kA Part number	H 50 kA Part number	L 65 kA Part number
Frame size [A]	L adj. [A]	I adj. [A]	Poles				
1000	400...1000A	1000...10000A	3		T7MS1000BW	T7MH1000BW	T7ML1000BW
			4		T7MS1000BW-4	T7MH1000BW-4	T7ML1000BW-4
1200	480...1200A	1200...12000A	3		T7MS1200BW	T7MH1200BW	T7ML12000BW
			4		T7MS1200BW-4	T7MH1200BW-4	T7ML1200BW-4

Standard PR232 LSI version

Electronic trip unit				IC Rating (600V)	S 25 kA Part number	H 50 kA Part number	L 65 kA Part number
Frame size [A]	L adj. [A]	I adj. [A]	Poles				
1000	400...100A	1000...12000A	3		T7MS1000CW	T7MH1000CW	T7ML1000CW
			4		T7MS1000CW-4	T7MH1000CW-4	T7ML1000CW-4
1200	480...1200A	1200...14400A	3		T7MS1200CW	T7MH1200CW	T7ML12000CW
			4		T7MS1200CW-4	T7MH1200CW-4	T7ML1200CW-4

Standard PR331 LSIG version

Electronic trip unit				IC Rating (600V)	S 25 kA Part number	H 50 kA Part number	L 65 kA Part number
Frame size [A]	L adj. [A]	I adj. [A]	Poles				
1000	400...1000A	1000...12000A	3		T7MS1000EW	T7MH1000EW	T7ML1000EW
			4		T7MS1000EW-4	T7MH1000EW-4	T7ML1000EW-4
1200	480...1200A	1200...14400A	3		T7MS1200EW	T7MH1200EW	T7ML12000EW
			4		T7MS1200EW-4	T7MH1200EW-4	T7ML1200EW-4

Standard PR332 LI version

Electronic trip unit				IC Rating (600V)	S 25 kA Part number	H 50 kA Part number	L 65 kA Part number
Frame size [A]	L adj. [A]	I adj. [A]	Poles				
1000	400...1000A	1000...15000A	3		T7MS1000PW	T7MH1000PW	T7ML1000PW
			4		T7MS1000PW-4	T7MH1000PW-4	T7ML1000PW-4
1200	480...1200A	1200...18000A	3		T7MS1200PW	T7MH1200PW	T7ML12000PW
			4		T7MS1200PW-4	T7MH1200PW-4	T7ML1200PW-4

Standard PR332 LSI version

Electronic trip unit				IC Rating (600V)	S 25 kA Part number	H 50 kA Part number	L 65 kA Part number
Frame size [A]	L adj. [A]	I adj. [A]	Poles				
1000	400...1000A	1000...15000A	3		T7MS1000RW	T7MH1000RW	T7ML1000RW
			4		T7MS1000RW-4	T7MH1000RW-4	T7ML1000RW-4
1200	480...1200A	1200...18000A	3		T7MS1200RW	T7MH1200RW	T7ML12000RW
			4		T7MS1200RW-4	T7MH1200RW-4	T7ML1200RW-4

Standard PR332 LSIG version

Electronic trip unit				IC Rating (600V)	S 25 kA Part number	H 50 kA Part number	L 65 kA Part number
Frame size [A]	L adj. [A]	I adj. [A]	Poles				
1000	400...1000A	1000...15000A	3		T7MS1000SW	T7MH1000SW	T7ML1000SW
			4		T7MS1000SW-4	T7MH1000SW-4	T7ML1000SW-4
1200	480...1200A	1200...18000A	3		T7MS1200SW	T7MH1200SW	T7ML12000SW
			4		T7MS1200SW-4	T7MH1200SW-4	T7ML1200SW-4

Tmax T ranges

Ordering details T7M

4

100% rated PR231 LS/I version

Electronic trip unit				IC Rating (600V)	SQ 25 kA Part number	HQ 50 kA Part number	LQ 65 kA Part number
Frame size [A]	L adj. [A]	I adj. [A]	Poles				
1000	400...1000A	1000...10000A	3		T7MSQ1000BW	T7MHQ1000BW	T7MLQ1000BW
1200	480...1200A	1200...12000A	3		T7MSQ1200BW	T7MHQ1200BW	T7MLQ1200BW

100% rated PR232 LSI version

Electronic trip unit				IC Rating (600V)	SQ 25 kA Part number	HQ 50 kA Part number	LQ 65 kA Part number
Frame size [A]	L adj. [A]	I adj. [A]	Poles				
1000	400...1000A	1000...12000A	3		T7MSQ1000CW	T7MHQ1000CW	T7MLQ1000CW
1200	480...1200A	1200...14400A	3		T7MSQ1200CW	T7MHQ1200CW	T7MLQ1200CW

100% rated PR331 LSIG version

Electronic trip unit				IC Rating (600V)	SQ 25 kA Part number	HQ 50 kA Part number	LQ 65 kA Part number
Frame size [A]	L adj. [A]	I adj. [A]	Poles				
1000	400...1000A	1000...12000A	3		T7MSQ1000EW	T7MHQ1000EW	T7MLQ1000EW
1200	480...1200A	1200...14400A	3		T7MSQ1200EW	T7MHQ1200EW	T7MLQ1200EW

100% rated PR332 LI version

Electronic trip unit				IC Rating (600V)	SQ 25 kA Part number	HQ 50 kA Part number	LQ 65 kA Part number
Frame size [A]	L adj. [A]	I adj. [A]	Poles				
1000	400...1000A	1000...15000A	3		T7MSQ1000PW	T7MHQ1000PW	T7MLQ1000PW
1200	480...1200A	1200...18000A	3		T7MSQ1200PW	T7MHQ1200PW	T7MLQ1200PW

100% rated PR332 LSI version

Electronic trip unit				IC Rating (600V)	SQ 25 kA Part number	HQ 50 kA Part number	LQ 65 kA Part number
Frame size [A]	L adj. [A]	I adj. [A]	Poles				
1000	400...1000A	1000...15000A	3		T7MSQ1000RW	T7MHQ1000RW	T7MLQ1000RW
1200	480...1200A	1200...18000A	3		T7MSQ1200RW	T7MHQ1200RW	T7MLQ1200RW

100% rated PR332 LSIG version

Electronic trip unit				IC Rating (600V)	SQ 25 kA Part number	HQ 50 kA Part number	LQ 65 kA Part number
Frame size [A]	L adj. [A]	I adj. [A]	Poles				
1000	400...1000A	1000...15000A	3		T7MSQ1000SW	T7MHQ1000SW	T7MLQ1000SW
1200	480...1200A	1200...18000A	3		T7MSQ1200SW	T7MHQ1200SW	T7MLQ1200SW

Tmax T ranges

Ordering details T7M

Tmax T7M Magnetic only protection (Motor control protection)

Standard magnetic only PR231-I version

Electronic trip unit				IC	S	H	L
Frame size	L adj.	I adj.	Poles	Rating	25 kA	50 kA	65 kA
[A]	[A]	[A]		(600V)	Part number	Part number	Part number
1000	—	1000...10000A	3		T7MS1000MW	T7MH1000MW	T7ML1000MW
1200	—	1200...12000A	3		T7MS1200MW	T7MH1200MW	T7ML1200MW

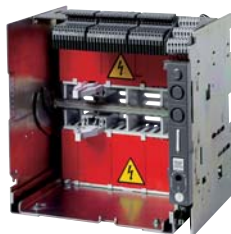
Tmax T7M Molded case switch

No protection, magnetic override only

No trip unit				IC	H
Frame size	L adj.	Mag. Override	Poles	Rating	50 kA
[A]	[A]	[A]		(600V)	Part number
1200	—	12000A	3		T7MH1200DW
			4		T7MH1200DW-4

Tmax T ranges

T7-T7M Accessories



Fixed parts, conversion kits and accessories for fixed parts

Withdrawable base only

Base type	T7 - T7M	
	3p Part number	4p Part number
Base with rear adjustable terminals	KT7WFRC	KT7WFRC-4

Breaker conversion kits (does not include the base)

Kit type	T7 - T7M	
	3p Part number	4p Part number
Kit to convert standard breaker to withdrawable	KT7WMK	KT7WMK-4

Sliding contact blocks ⁽¹⁾

Kit type	T7 - T7M	T7M
	Part number	Part number
LEFT contact block for base	KT7XSFCP-L	KT7MXSFCP-L
CENTER contact block for base	KT7XSFCP-C	KT7XSFCP-C
RIGHT contact block for base	KT7XSFCP-R	KT7XSFCP-R
LEFT contact block for breaker	KT7XSFCMP-L	KT7XSFCMP-L
CENTER contact block for breaker	KT7XSFCMP-C	KT7XSFCMP-C
RIGHT contact block for breaker	KT7XSFCMP-R	KT7XSFCMP-R

⁽¹⁾ Please refer to the technical catalog for dedicated accessories related to them.

Terminals for base and circuit breaker

Rear terminals and front terminals for cables

Terminal type	T7 - T7M	
	3p Part number	4p Part number
Horizontal or vertical terminals for base	KT7XHRVR-3	KT7XHRVR-4
Horizontal rear terminals for breaker	KT7XHR-3	KT7XHR-4
Vertical rear terminals for breaker	KT7XVR-3	KT7XVR-4
4x 1/0 to 4x 500 Kcmil (1200A rated)	KT7X1200-3	KT7X1200-4

Terminal shroud covers

Type	T7 - T7M	
	3p Part number	4p Part number
High profile	KT7XHTC-3	KT7XHTC-4
Low profile	KT7XLTC-3	KT7XLTC-4

Phase separators

Type	T7 - T7M	
	3p Part number	4p Part number
High profile	KT7PBH-3	KT7PBH-4
Low profile	KT7PBL-3	KT7PBL-4

4



Tmax T ranges

T7-T7M Accessories

Electrical operators



Shunt opening release (Y0)

Control voltage type	T7 - T7M
	Part number
24V ac/dc	KT7XS0
30V ac/dc	KT7XS9
48V ac/dc	KT7XS8
60V ac/dc	KT7XS7
110...120V ac/dc	KT7XS6
120...127V ac/dc	KT7XS5
220...240V ac/dc	KT7XS4
250V ac/dc	KT7XS3
380...440Vac	KT7XS2
440...480Vac	KT7XS1



Shunt closing (YC)

Control voltage type	T7M
	Part number
24V ac/dc	KT7MXC0
30V ac/dc	KT7MXC9
48V ac/dc	KT7MXC8
60V ac/dc	KT7MXC7
110...120V ac/dc	KT7MXC6
120...127V ac/dc	KT7MXC5
220...240V ac/dc	KT7MXC4
250V ac/dc	KT7MXC3
380...440Vac	KT7MXC2
440...480Vac	KT7MXC1



Undervoltage opening release (YU)

Control voltage type	T7 - T7M
	Part number
24V ac/dc	KT7XU0
30V ac/dc	KT7XU9
48V ac/dc	KT7XU8
60V ac/dc	KT7XU7
110...120V ac/dc	KT7XU6
120...127V ac/dc	KT7XU5
220...240V ac/dc	KT7XU4
250V ac/dc	KT7XU3
380...440Vac	KT7XU2
440...480Vac	KT7XU1

Tmax T ranges

T7-T7M Accessories

4



Motor operators

Spring charging motor operators

Control voltage type	T7M
	Part number
24...30V ac/dc	KT7MXM9
48...60V ac/dc	KT7MXM7
110...130V ac/dc	KT7MXM5
220...250V ac/dc	KT7MXM3
380...415Vac	KT7MXM2

Electrical signals

Standard auxiliary contacts (AUX)

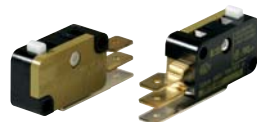
Auxiliary contact type	T7	T7M
	Part number	Part number
1 form C + 1 BA 400Vac	KT7AS	—
1 form C + 1 BA 24Vdc	KT7ASL	—
2 form C 400Vac	KT7XAS2	KT7XAS2
2 form C 24Vdc	KT7XAS2L	KT7XAS2L
S51 Alarm contact 250Vac	KT7S51	KT7XS51
Ready-to-Close contact 250V ac/dc	—	KT7XRTC250
Ready-to-Close contact 24Vdc	—	KT7XRTC24
Spring charged contact 250V ac/dc	—	KT7XSC250
Spring charged contact 24Vdc	—	KT7XSC24
1BA + remote reset 24...30V ac/dc	—	KT7XETBAR9
1BA + remote reset 110...130V ac/dc	—	KT7XETBAR5
1BA + remote reset 200...240V ac/dc	—	KT7XETBAR4
Position contact set withdrawable 250Vac	KT7XAUP250	KT7XAUP250
Position contact set withdrawable 24Vdc	KT7XAUP24	KT7XAUP24

Possible combinations with auxiliary contacts on T7-T7M (excluding S51, RTC, SC and AUP contacts)

Combination type	T7	T7M
	Part number	Part number
2 form C	YES	YES
4 form C	NO	YES
2 form C + 1 BA	YES	NO
3 form C + 1 BA	YES	NO

Early make contact for rotary handle

Contact type	T7
	Part number
Early make contact	KT7EM



Tmax T ranges

T7-T7M Accessories

Rotary handles



Breaker mounted rotary handle

Handle type	T7
Part number	
Rotary handle for Fixed / Plug-in version breakers	KT7RH
Rotary handle for Withdrawable version breakers	KT7RH



Door mounted rotary handle, shaft and mechanism

Type	T7
Part number	
Mechanism	KT7VD-M
NEMA 1 square handle	KT7VD-H
Shaft for NEMA 1 square handle	KT7VD-S
NEMA 1, 3R, 12 pistol handle (black)	OHB125J10B
Shaft for NEMA 1, 3R, 12 pistol handle	EXP10X500

Locks and padlock provision



Padlock provision

Padlock type	T7	T7M
Part number	Part number	Part number
Lever padlock OPEN position Fixed / Withdrawable version	KT7LDO	KT7MLDO
Button padlock provision OPEN position independant	—	KT7XTPCI
Pushbutton protection	—	KT7XTPC

Keylock for rotary handle mechanism

Lock type	T7
Part number	
Different keys, OPEN position	KT7KLFD
Same keys, OPEN position key #20005	KT7KLFS-20005
Same keys, OPEN position key #20006	KT7KLFS-20006
Same keys, OPEN position key #20007	KT7KLFS-20007
Same keys, OPEN position key #20008	KT7KLFS-20008



Keylock on circuit breaker

Lock type	T7	T7M
Part number	Part number	Part number
Different keys, OPEN position	KT7KLCD	KT7MKLCD
Same keys, OPEN position key #20005	KT7KLCS-20005	KT7MKLCS-20005
Same keys, OPEN position key #20006	KT7KLCS-20006	KT7MKLCS-20006
Same keys, OPEN position key #20007	KT7KLCS-20007	KT7MKLCS-20007
Same keys, OPEN position key #20008	KT7KLCS-20008	KT7MKLCS-20008

Tmax T ranges

T7-T7M Accessories

4



Keylock Racked-in / Test / Racked-out position

Lock type	T7-T7M
	Part number
1 breaker, different keys	KT7XPL-D
Group, same keys # 20005	KT7XPL-20005
Group, same keys # 20006	KT7XPL-20006
Group, same keys # 20007	KT7XPL-20007
Group, same keys # 20008	KT7XPL-20008
Provision for Ronis lock	KT7XPL-R
Provision for Profalux lock	KT7XPL-P
Provision for Castell lock	KT7XPL-C
Provision for Kirk lock	KT7XPL-K



Accessory for lock in Racked-out position

Lock type	T7-T7M
	Part number
Lock in Racked-out position only	KT7XPLA



Compartment door lock

Lock type	T7-T7M
	Part number
Door lock with cables ⁽¹⁾	KT7XMLCD
Door lock (wall mounted)	KT7XMLWMCB
Door lock (floor mounted)	KT7XMLFMCB
Door lock Withdrawable version	KT7XMLDOMCB

⁽¹⁾ To be ordered with interlock plate and interlock cables for interlock consistence with circuit breaker

Circuit breaker equipped with compartment door lock can't be interlocked with another circuit breaker



Mechanical interlock with cables (2 circuit breakers T7/T7M) ⁽²⁾

Interlock type	T7-T7M
	Part number
Cable kit	KT7XMLC
Interlock plate, Fixed version - Rear mounted	KT7XIPB
Interlock plate, Fixed version	KT7XMLPF
Interlock plate, Withdrawable version	KT7XMLPW
Wiring kit, Emax interlock	KT7XCI

⁽²⁾ interlocking 2 circuit breakers will require 1 cable kit + 2 interlock plates depending on the version of the circuit breaker

IP54 door protection

Type	T7M
	Part number
Clear IP54 door protection cover	KT7XDC

Mechanical operation counter

Type	T7M
	Part number
Operation counter	KT7XEMC



Tmax T ranges

T7-T7M Accessories



External Neutral CT

CT for neutral	
CT Type	T7-T7M
	Part number
400...1200A CT	KT7XNCT-1200

Spare rating plugs for trip unit

Plug type	T7-T7M
	Part number
400A	KT70400RP
600A	KT70600RP
800A	KT70800RP
1000A	KT71000RP
1200A	KT71200RP



Extra compartment door flange

Flange type	T7-T7M
	Part number
Compartment door flange Fixed version	KT7XFCD

Lug adaptor spare kit

Type	T7-T7M
	Part number
6 plugs and screws	KT7XF-6

Tmax T ranges

Ordering details T8

Tmax T8 Electronic protection (Molded case circuit breaker)

Standard PR331 LSI version

Electronic trip unit				IC	V
Frame size [A]	L adj. [A]	I adj. [A]	Poles	Rating (600V)	100 kA Part number
1600	640...1600A	1600...24000A	3		T8V16CW
			4		T8V16CW-4
2000	800...2000A	2000...30000A	3		T8V20CW
			4		T8V20CW-4
2500	1000...2500A	2500...37500A	3		T8V25CW
			4		T8V25CW
3000 ⁽¹⁾	1200...3000A	3000...45000A	3		T8V30CW
			4		T8V30CW-4

⁽¹⁾ Only available with rear vertical terminals for busbars

Standard PR331 LSIG version

Electronic trip unit				IC	V
Frame size [A]	L adj. [A]	I adj. [A]	Poles	Rating (600V)	100 kA Part number
1600	640...1600A	1600...24000A	3		T8V16EW
			4		T8V16EW-4
2000	800...2000A	2000...30000A	3		T8V20EW
			4		T8V20EW-4
2500	1000...2500A	2500...37500A	3		T8V25EW
			4		T8V25EW
3000 ⁽¹⁾	1200...3000A	3000...45000A	3		T8V30EW
			4		T8V30EW-4

⁽¹⁾ Only available with rear vertical terminals for busbars

Standard PR332 LI version

Electronic trip unit				IC	V
Frame size [A]	L adj. [A]	I adj. [A]	Poles	Rating (600V)	100 kA Part number
1600	640...1600A	1600...24000A	3		T8V16PW
			4		T8V16PW-4
2000	800...2000A	2000...30000A	3		T8V20PW
			4		T8V20PW-4
2500	1000...2500A	2500...37500A	3		T8V25PW
			4		T8V25PW
3000 ⁽¹⁾	1200...3000A	3000...45000A	3		T8V30PW
			4		T8V30PW-4

⁽¹⁾ Only available with rear vertical terminals for busbars

Standard PR332 LSI version

Electronic trip unit				IC	V
Frame size [A]	L adj. [A]	I adj. [A]	Poles	Rating (600V)	100 kA Part number
1600	640...1600A	1600...24000A	3		T8V16RW
			4		T8V16RW-4
2000	800...2000A	2000...30000A	3		T8V20RW
			4		T8V20RW-4
2500	1000...2500A	2500...37500A	3		T8V25RW
			4		T8V25RW
3000 ⁽¹⁾	1200...3000A	3000...45000A	3		T8V30RW
			4		T8V30RW-4

⁽¹⁾ Only available with rear vertical terminals for busbars

Tmax T ranges

Ordering details T8

Standard PR332 LSIG version

Electronic trip unit				IC Rating (600V)	V 100 kA Part number
Frame size [A]	L adj. [A]	I adj. [A]	Poles		
1600	640...1600A	1600...24000A	3		T8V16SW
			4		T8V16SW-4
2000	800...2000A	2000...30000A	3		T8V20SW
			4		T8V20SW-4
2500	1000...2500A	2500...37500A	3		T8V25SW
			4		T8V25SW
3000 ⁽¹⁾	1200...3000A	3000...45000A	3		T8V30SW
			4		T8V30SW-4

⁽¹⁾ Only available with rear vertical terminals for busbars

100% rated PR331 LSI version

Electronic trip unit				IC Rating (600V)	V 100 kA Part number
Frame size [A]	L adj. [A]	I adj. [A]	Poles		
1600	640...1600A	1600...24000A	3		T8VQ16CW
2000	800...2000A	2000...30000A	3		T8VQ20CW
2500 ⁽¹⁾	1000...2500A	2500...37500A	3		T8VQ25CW
3000 ⁽¹⁾	1200...3000A	3000...45000A	3		T8VQ30CW

⁽¹⁾ Only available with rear vertical terminals for busbars

100% rated PR331 LSIG version

Electronic trip unit				IC Rating (600V)	V 100 kA Part number
Frame size [A]	L adj. [A]	I adj. [A]	Poles		
1600	640...1600A	1600...24000A	3		T8VQ16EW
2000	800...2000A	2000...30000A	3		T8VQ20EW
2500 ⁽¹⁾	1000...2500A	2500...37500A	3		T8VQ25EW
3000 ⁽¹⁾	1200...3000A	3000...45000A	3		T8VQ30EW

⁽¹⁾ Only available with rear vertical terminals for busbars

100% rated PR332 LI version

Electronic trip unit				IC Rating (600V)	V 100 kA Part number
Frame size [A]	L adj. [A]	I adj. [A]	Poles		
1600	640...1600A	1600...24000A	3		T8VQ16PW
2000	800...2000A	2000...30000A	3		T8VQ20PW
2500 ⁽¹⁾	1000...2500A	2500...37500A	3		T8VQ25PW
3000 ⁽¹⁾	1200...3000A	3000...45000A	3		T8VQ30PW

⁽¹⁾ Only available with rear vertical terminals for busbars

100% rated PR332 LSI version

Electronic trip unit				IC Rating (600V)	V 100 kA Part number
Frame size [A]	L adj. [A]	I adj. [A]	Poles		
1600	640...1600A	1600...24000A	3		T8VQ16RW
2000	800...2000A	2000...30000A	3		T8VQ20RW
2500 ⁽¹⁾	1000...2500A	2500...37500A	3		T8VQ25RW
3000 ⁽¹⁾	1200...3000A	3000...45000A	3		T8VQ30RW

⁽¹⁾ Only available with rear vertical terminals for busbars

Tmax T ranges

Ordering details T8

100% rated PR332 LSIg version

Electronic trip unit				IC	V
Frame size [A]	L adj. [A]	I adj. [A]	Poles	Rating (600V)	100 kA Part number
1600	640...1600A	1600...24000A	3		T8VQ16SW
2000	800...2000A	2000...30000A	3		T8VQ20SW
2500 ⁽¹⁾	1000...2500A	2500...37500A	3		T8VQ25SW
3000 ⁽¹⁾	1200...3000A	3000...45000A	3		T8VQ30SW

⁽¹⁾ Only available with rear vertical terminals for busbars

4

No protection, magnetic override only

No trip unit				IC	V
Frame size [A]	L adj. [A]	Mag. Override [A]	Poles	Rating (600V)	100 kA Part number
2000	—	40000A	3		T8V20DW
			4		T8V20DW-4
2500	—	40000A	3		T8V25DW
			4		T8V25DW-4
3000	—	40000A	3		T8V30DW
			4		T8V30DW-4

Tmax T ranges

T8 Accessories

Terminals for base and circuit breaker

Rear terminals and front terminals for cables

Terminal type	T8	
	3p Part number	4p Part number
Vertical rear terminals	KT8VR2500	KT8VR2500-4
4x 1/0 to 4x 750 Kcmil (1600A rated)	KT8TL	—
6x 1/0 to 6x 750 Kcmil (1200A rated)	KT8TM	—

Phase separators

Type	T8	
	3p Part number	4p Part number
High profile	KT8PBH-3	KT8PBH-4
Low profile	KT8PBL-3	KT8PBL-4

Electrical operators

Shunt opening release (Y0)

Control voltage type	T8	
	Part number	
24V ac/dc	KT8ES0	
30V ac/dc	KT8ES9	
48V ac/dc	KT8ES8	
60V ac/dc	KT8ES7	
110...120V ac/dc	KT8ES6	
120...127V ac/dc	KT8ES5	
220...240V ac/dc	KT8ES4	
250V ac/dc	KT8ES3	
380...440Vac	KT8ES2	
440...480Vac	KT8ES1	

Second shunt opening release (Y02)

Control voltage type	T8	
	Part number	
24V ac/dc	KT8ES0-2	
30V ac/dc	KT8ES9-2	
48V ac/dc	KT8ES8-2	
60V ac/dc	KT8ES7-2	
110...120V ac/dc	KT8ES6-2	
120...127V ac/dc	KT8ES5-2	
220...240V ac/dc	KT8ES4-2	
250V ac/dc	KT8ES3-2	
380...440Vac	KT8ES2-2	
440...480Vac	KT8ES1-2	

Tmax T ranges

T8 Accessories

4



Undervoltage opening release (YU)

Control voltage type	T8
Part number	
24V ac/dc	KT8EU0
30V ac/dc	KT8EU9
48V ac/dc	KT8EU8
60V ac/dc	KT8EU7
110...120V ac/dc	KT8EU6
120...127V ac/dc	KT8EU5
220...240V ac/dc	KT8EU4
250V ac/dc	KT8EU3
380...440Vac	KT8EU2
440...480Vac	KT8EU1



Shunt closing release (YC)

Control voltage type	T8
Part number	
24V ac/dc	KT8EC0
30V ac/dc	KT8EC9
48V ac/dc	KT8EC8
60V ac/dc	KT8EC7
110...120V ac/dc	KT8EC6
120...127V ac/dc	KT8EC5
220...240V ac/dc	KT8EC4
250V ac/dc	KT8EC3
380...440Vac	KT8EC2
440...480Vac	KT8EC1

Motor operators

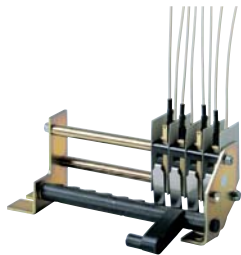


Spring charging motor operators

Control voltage type	T8
Part number	
24...30V ac/dc	KT8EM9
48...60V ac/dc	KT8EM7
110...130V ac/dc	KT8EM5
220...250V ac/dc	KT8EM3

Tmax T ranges

T8 Accessories



Electrical signals

Standard auxiliary contacts (AUX)

Auxiliary contact type	T8
Part number	
4 form C (PR232-PR331 only)	KT8AS4
4 form C (PR232-PR331 only) 24Vdc	KT8AS4L
4 form C (PR332 only) ⁽¹⁾	KT8AS4-332
4 form C (PR332 only) 24Vdc ⁽¹⁾	KT8AS4L-332
1 BA	KT8ETBA
1 BA + remote reset 24...30V ac/dc	KT8ETBAR9
1 BA + remote reset 24...30V ac/dc	KT8ETBAR5
1 BA + remote reset 24...30V ac/dc	KT8ETBAR4
1 NC contact for YU de-energized	KT8EUE10
1 NO contact for YU de-energized	KT8EUE01

⁽¹⁾ Always supplied as standard with PR332 trip units. To be ordered as loose part only.



Padlock provision

Padlock provision

Padlock type	T8
Part number	
Padlock OPEN position	KT8EPD1
Padlock OPEN position (HD)	KT8EPDHD1
Pushbutton protection	KT8EPG

IP54 door protection

Type	T8
Part number	
Clear IP54 door protection cover	KT8EDC

Mechanical operation counter

Type	T8
Part number	
Operation counter	KT8EMC



Tmax T ranges

T8 Accessories



External Neutral CT

CT for neutral

CT Type	T8
	Part number
1000...3000A CT	KT78NCT-3000

Spare rating plugs for trip unit

Plug type	T8
	Part number
1000A	KT81000RP
1200A	KT81200RP
1600A	KT81600RP
2000A	KT82000RP
2500A	KT82500RP
3000A	KT83000RP



Extra compartment door flange

Flange type	T8
	Part number
Compartment door flange Fixed version	KT8FCD

Tmax T ranges

Contact us

ABB Canada

2117, 32e Avenue
Lachine, QC H8T 3J1
Tel: 514-420-3100
Toll free: 1-800-567-0283
Fax: 514-420-3137

Website: www.abb.ca

While all care has been taken to ensure that the information contained in this publication is correct, no responsibility can be accepted for any inaccuracy. The Company reserves the right to alter or modify the information contained herein at any time in the light of technical or other developments. Technical specifications are valid under normal operating conditions only. The Company does not accept any responsibility for any misuse of the product and cannot be held liable for indirect or consequential damages.

© Copyright 2016 ABB Inc. All rights reserved.

