

REFERENCE PLANS:		
No.	Dwg No.	DESCRIPTION

- GENERAL NOTES:**
1. ALL DIMENSIONS ARE IN INCHES UNLESS NOTED OTHERWISE.
 2. ALL MATERIAL TO BE AL 6061-T6 UNLESS NOTED OTHERWISE.
 3. GANGWAY HAS BEEN DESIGNED ACCORDING TO ISO 7061:2015 STANDARD FOR ALUMINUM SHORE GANGWAYS FOR SEACONING VESSELS.
 4. UNLESS NOTED OTHERWISE, ALL WELDING SHALL BE 1/4" LEG LENGTH CONTINUOUS FILLET WELD.
 5. TOTAL WEIGHT OF ASSEMBLED GANGWAY IS APPROX. 803 LBS.
 6. QUANTITIES IN THE ITEM LIST ARE APPROXIMATE AND ARE GIVEN WITHOUT CUTTING ALLOWANCES FOR INFORMATION ONLY.
 7. ** THIS IS A DESIGN LEVEL DRAWING AND SHOULD NOT BE USED FOR FABRICATION.
- Transport Canada Annotations/Notations:**
1. The gangway installation is to comply with the requirements of the "Safe Working Practices Regulations C.R.C. 1978, c. 1467", "Maritime Occupational Health and Safety Regulations - SOR/2010-120" and "Cargo, Fumigation and Tackle Regulations SOR/2007-128".

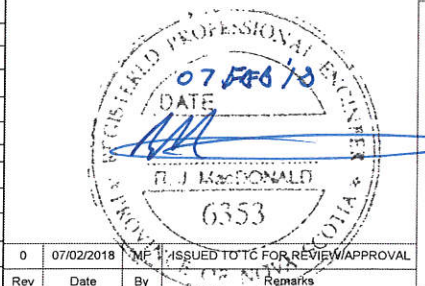
Gangways are not required to be submitted for approval. This drawing is retained for "INFORMATION ONLY".

INFORMATION ONLY

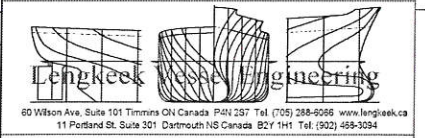
Sheet 1 of 2

TRANSPORT CANADA		TRANSPORTS CANADA
RDIMS #	Letter 13873538 Plan 13763824	SGDDI #
VERSION #	Letter Version 1 Plan Version 2	VERSION #

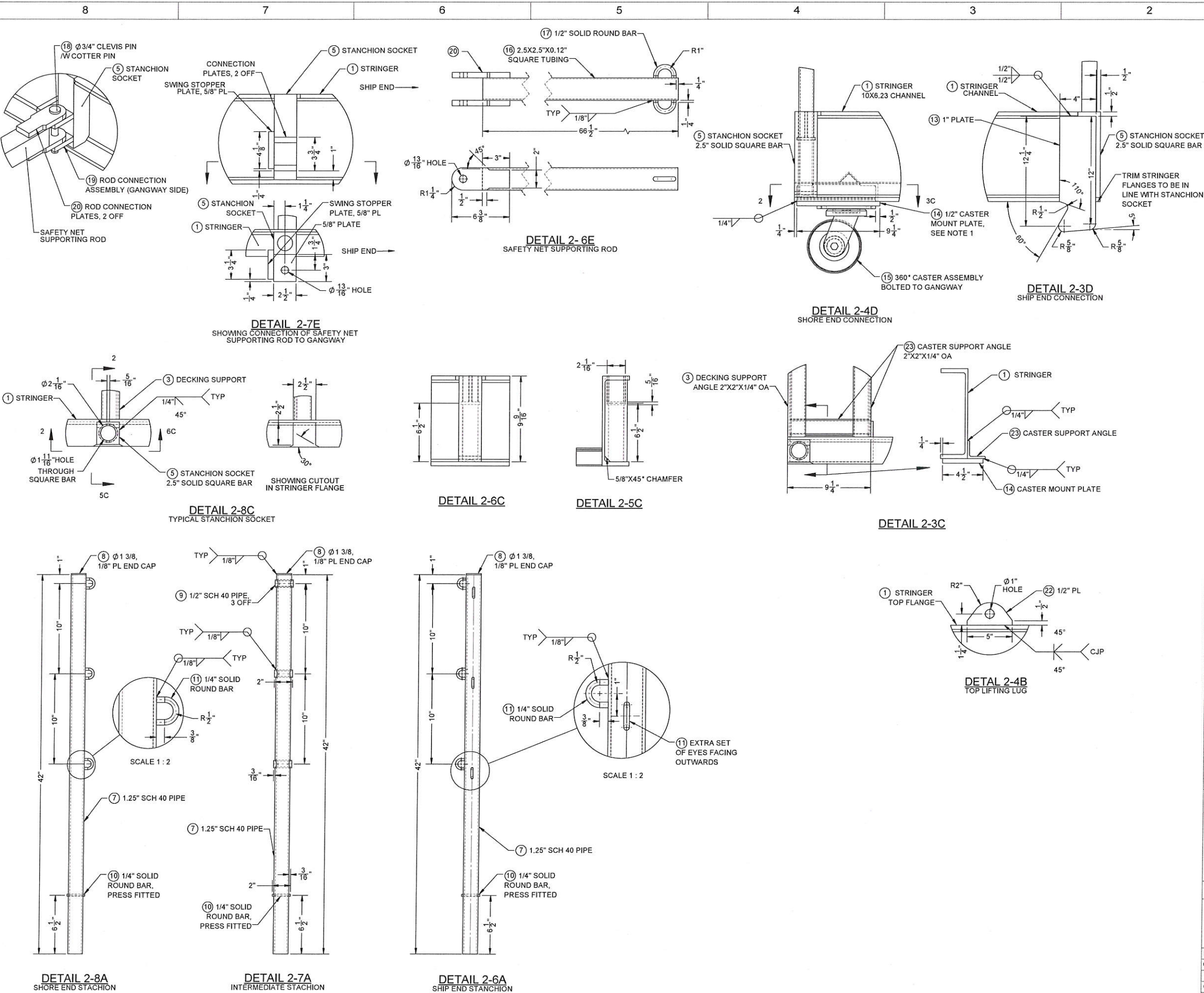
30 FT GANGWAY ITEM LIST			
ITEM NO.	NAME	DESCRIPTION	QTY
1	SIDE STRINGER	CHANNEL 10X6.23 (6061-T6)	60.67 FT
2	DECKING	1/8" SAFETY-TREAD PLATE (5086-H112)	60.67 FT ²
3	DECKING SUPPORTS	2"X2"X1/4" OA (6061-T6)	30 FT
4	TRIPPING BRACKETS	1/4" PLATE (6061-T6)	2.04 FT ²
5	STANCHION SOCKETS	2.5"X2.5" SOLID SQUARE BAR (6061-T6)	12.75 FT
6	DECK TREADS	1.5"X1.5"X1/8" OA (6061-T6)	42.17 FT
7	STANCHIONS	1.25" SCH 40 PIPE (6061-T6)	56 FT
8	STANCHION END CAP	1/8" PL (6061-T6)	0.17 FT ²
9	WIRE ROPE GUIDES	1/2" SCH 40 ALUMINUM PIPE (6061-T6)	6 FT
10	STANCHION LOCK	Ø 1/4" ROUND SOLID BAR (6061-T6)	2.67 FT
11	STANCHION EYES	Ø 1/4" ROUND SOLID BAR (6061-T6)	3.86 FT
12	WIRE ROPE	Ø 1/4" SS 302/304 VINYL COATED WIRE ROPE	180 FT
13	SHIP END CONNECTION HOOK	1" PLATE (6061-T6)	0.65 FT ²
14	360° CASTER MOUNT PLATE	1/2" PLATE (6061-T6)	0.58 FT ²
15	360° CASTER ASSEMBLY	SWIVEL CASTER MCMASTER-CARR 22705T11 OR SIMILAR (MINIMUM SAFE WORKING LOAD 1500 LBS)	2
16	SAFETY NET SUPPORTING ROD	2.5"X2.5"X0.12" SQUARE TUBING (6061-T6)	36 FT
17	SAFETY NET SUPPORTING ROD EYES	Ø 1/2" SOLID ROUND BAR (6061-T6)	3.64 FT
18	SAFETY NET SUPPORTING ROD PIN	Ø 3/4" CLEVIS PIN, 5.5" LONG, W/ COTTER PIN (SS 304)	6
19	SAFETY NET SUPPORTING ROD CONNECTION ASSEMBLY (INCLUDING SWING STOPPER PLATE) (GANGWAY SIDE)	5/8" PLATE (6061-T6)	1.14 FT ²
20	SAFETY NET SUPPORTING ROD CONNECTION PLATES (ROD SIDE)	5/8" PLATE (6061-T6)	1.14 FT ²
21	SIDE LIFTING LUGS	1/2" PLATE (6061-T6)	0.66 FT ²
22	TOP LIFTING LUGS	1/2" PLATE (6061-T6)	0.24 FT ²
23	CASTER SUPPORT ANGLES	2"X2"X1/4" OA (6061-T6)	3.59 FT
24	MISCELLANEOUS	WIRE ROPE FITTINGS: 6 X TURNBUCKLES W/ HOOKS, 6 X Ø 1/2" DETACHABLE EYES FOR WIRE ROPE	N/A



THIS DRAWING, DESIGN CONCEPT, AND SPECIFICATIONS ARE THE PROPERTY OF LENGKEEK VESSEL ENGINEERING INC. AND SHALL NOT BE COPIED IN ANY MANNER, USED FOR MANUFACTURE, SOLD, TRANSFERRED, COMMUNICATED TO A THIRD PARTY, OR USED FOR ANY PURPOSE OTHER THAN THAT FOR WHICH IT IS SUPPLIED, WITHOUT THE EXPRESS WRITTEN CONSENT OF LENGKEEK VESSEL ENGINEERING.



Client:	CCG/DFO
Title:	CCGS SIR WILLIAM ALEXANDER 30FT ALUMINUM GANGWAY
Drawn By:	MF
Checked By:	BH
Date:	12/01/2018
Scale:	1:20 UNO
Rev:	0
Approval/Rev	DWG NO:
Client	J17073-S01
Class	
Flag	
Sht No. 1 of 2	



REFERENCE PLANS:

No.	Dwg No.	DESCRIPTION

SEE SHEET 1 FOR GENERAL NOTES.

NOTE 1: CASTER MOUNT PLATE WAS SIZED BASED ON SIZE OF MOUNTING PLATE AND BOLTING PATTERN FOR MCMASTER-CARR EXTRA-HIGH CAPACITY CORROSION-RESISTANT CASTER WITH POLYURETHANE WHEELS (ITEM NO. 22705111). IF DIFFERENT CASTERS ARE CHOSEN FOR THE GANGWAY, MOUNT PLATE SIZE/POSITION MIGHT REQUIRE ADJUSTMENTS.

INFORMATION ONLY

Sheet 2 of 2

07 Feb 18
DATE
R.J. McDONALD
6353

0	07/02/2018	MF	ISSUED TO CLIENT FOR REVIEW/APPROVAL
Rev	Date	By	Remarks

THIS DRAWING, DESIGN CONCEPT, AND SPECIFICATIONS ARE THE PROPERTY OF LENCREEK VESSEL ENGINEERING INC. AND SHALL NOT BE COPIED IN ANY MANNER, USED FOR MANUFACTURE, SOLD, TRANSFERRED, COMMUNICATED TO A THIRD PARTY, OR USED FOR ANY PURPOSE OTHER THAN THAT FOR WHICH IT IS SUPPLIED, WITHOUT THE EXPRESS WRITTEN CONSENT OF LENCREEK VESSEL ENGINEERING.

60 Wilson Ave., Suite 101 Timmins ON Canada P4N 2B7 Tel: (705) 288-6096 www.lencreek.ca
11 Portland St. Suite 301 Dartmouth NS Canada B2Y 1H1 Tel: (902) 488-3034

Client: CCG/DFO

Title: CCGS SIR WILLIAM ALEXANDER
30FT ALUMINUM GANGWAY

Drawn By: MF	Date: 12/01/2018
Checked By: BH	Scale: 1:5 UNO
	Rev: 0
	Approval/Rev
Client	DWG NO: J17073-S01
Class	
Flag	Sht No: 2 of 2