

TRANSPORT CANADA		TRANSPORTS CANADA	
RDIMS #	Letter 13873538 Plan 13763845	SGDDI #	
VERSION #	Letter Version 1 Plan Version 2	VERSION #	

REFERENCE PLANS:		
No.	Dwg No.	DESCRIPTION

GENERAL NOTES:

1. ALL DIMENSIONS ARE IN INCHES UNLESS NOTED OTHERWISE.
2. ALL MATERIAL TO BE AL 6061-T6 UNLESS NOTED OTHERWISE.
3. GANGWAY HAS BEEN DESIGNED ACCORDING TO ISO 7061:2015 STANDARD FOR ALUMINUM SHORE GANGWAYS FOR SEAGOING VESSELS.
4. UNLESS NOTED OTHERWISE, ALL WELDING SHALL BE 1/4" LEG LENGTH CONTINUOUS FILLET WELD.
5. TOTAL WEIGHT OF ASSEMBLED GANGWAY IS APPROX. 574 LBS.
6. QUANTITIES IN THE ITEM LIST ARE APPROXIMATE AND ARE GIVEN WITHOUT CUTTING ALLOWANCES FOR INFORMATION ONLY.
7. ** THIS IS A DESIGN LEVEL DRAWING AND SHOULD NOT BE USED FOR FABRICATION.

Transport Canada Annotations/Notations:

1. The gangway installation is to comply with the requirements of the "Safe Working Practices Regulations C.R.C., 1978, c. 1467", "Maritime Occupational Health and Safety Regulations - SOR/2010-120" and "Cargo, Fumigation and Tackle Regulations SOR/2007-128".

Gangways are not required to be submitted for approval. This drawing is retained for "INFORMATION ONLY".

INFORMATION ONLY

Sheet 1 of 2

20 FT GANGWAY ITEM LIST			
ITEM NO.	NAME	DESCRIPTION	QTY
1	SIDE STRINGER	CHANNEL 10X6.23 (6061-T6)	40 FT
2	DECKING	1/8" SAFETY-TREAD PLATE (5086-H112)	40 FT ²
3	DECKING SUPPORTS	2"x2"x1/4" OA (6061-T6)	22 FT
4	TRIPPING BRACKETS	1/4" PLATE (6061-T6)	1.02 FT ²
5	STANCHION SOCKETS	2.5"x2.5" SOLID SQUARE BAR (6061-T6)	7.97 FT
6	DECK TREADS	1.5"x1.5"x1/8" OA (6061-T6)	27.5 FT
7	STANCHIONS	1.25" SCH 40 PIPE (6061-T6)	35 FT
8	STANCHION END CAP	1/8" PL (6061-T6)	0.11 FT ²
9	WIRE ROPE GUIDES	1/2" SCH 40 ALUMINUM PIPE (6061-T6)	3 FT
10	STANCHION LOCK	Ø 1/4" ROUND SOLID BAR (6061-T6)	2.67 FT
11	STANCHION EYES	Ø 1/4" ROUND SOLID BAR (6061-T6)	3.86 FT
12	WIRE ROPE	Ø 1/4" SS 302/304 VINYL COATED WIRE ROPE	120 FT
13	SHIP END CONNECTION HOOK	1" PLATE (6061-T6)	0.49 FT ²
14	360° CASTER MOUNT PLATE	1/2" PLATE (6061-T6)	0.38 FT ²
15	360° CASTER ASSEMBLY	SWIVEL CASTER MCMASTER-CARR23355T52 OR SIMILAR (MINIMUM SAFE WORKING LOAD 1000 LBS)	2
16	SAFETY NET SUPPORTING ROD	2.5"x2.5"x0.12" SQUARE TUBING (6061-T6)	36 FT
17	SAFETY NET SUPPORTING ROD EYES	Ø 1/2" SOLID ROUND BAR (6061-T6)	3.64 FT
18	SAFETY NET SUPPORTING ROD PIN	Ø 3/4" CLEVIS PIN, 5.5" LONG, W/ COTTER PIN (SS 304)	6
19	SAFETY NET SUPPORTING ROD CONNECTION ASSEMBLY (INCLUDING SWING STOPPER) (GANGWAY SIDE)	5/8" PLATE (6061-T6)	1.54 FT ²
20	SAFETY NET SUPPORTING ROD CONNECTION PLATES (ROD SIDE)	5/8" PLATE (6061-T6)	1.14 FT ²
21	SIDE LIFTING LUGS	1/2" PLATE (6061-T6)	0.66 FT ²
22	TOP LIFTING LUGS	1/2" PLATE (6061-T6)	0.24 FT ²
23	CASTER SUPPORT ANGLES	2"x2"x1/4" OA (6061-T6)	3.59 FT
24	TRIPPING BRACKET IWO CENTER SAFETY NET SUPPORTING ROD	1/2" PLATE (6061-T6)	0.34 FT ²
25	MISCELLANEOUS	WIRE ROPE FITTINGS: 6 X TURNBUCKLES W/ HOOKS, 6 X Ø 1/2" DETACHABLE EYES FOR WIRE ROPE	N/A

07 Feb 18
DATE
R J MCDONALD
6353

THIS DRAWING, DESIGN CONCEPT, AND SPECIFICATIONS ARE THE PROPERTY OF LENGKEEK VESSEL ENGINEERING INC. AND SHALL NOT BE COPIED IN ANY MANNER, USED FOR MANUFACTURE, SOLD, TRANSFERRED, COMMUNICATED TO A THIRD PARTY, OR USED FOR ANY PURPOSE OTHER THAN THAT FOR WHICH IT IS SUPPLIED, WITHOUT THE EXPRESS WRITTEN CONSENT OF LENGKEEK VESSEL ENGINEERING.

Client: CCG/DFO

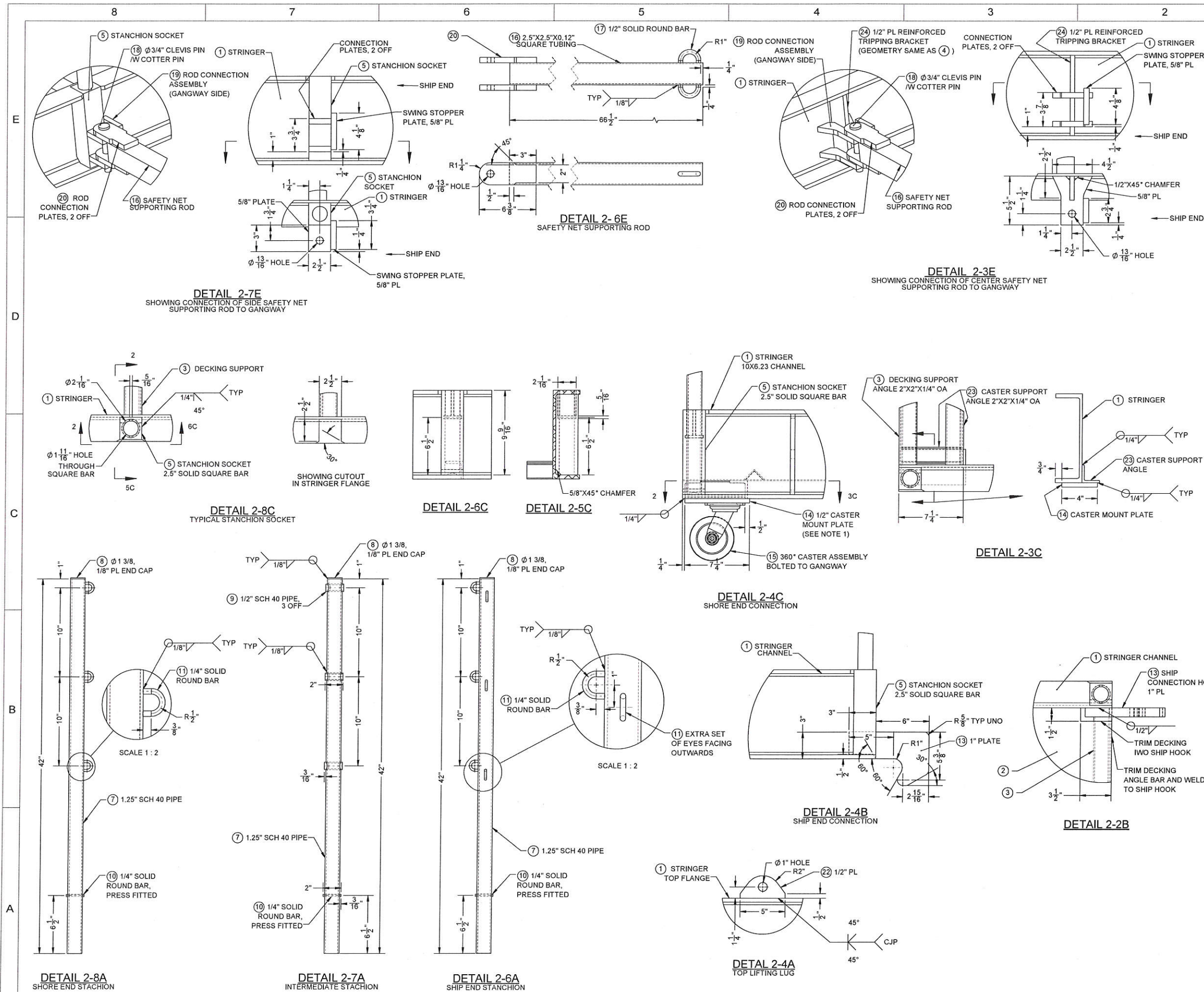
Title: CCGS SIR WILLIAM ALEXANDER
20FT ALUMINUM GANGWAY

Drawn By: MF
Checked By: BH

Date: 12/01/2018
Scale: 1:15 UNO
Rev: 0

Approval/Rev
Client
Class
Flag

DWG NO: J17073-S02
Sht No: 1 of 2

[illegible]

SEE SHEET 1 FOR GENERAL NOTES.

NOTE 1: CASTER MOUNT PLATE WAS SIZED BASED ON SIZE OF MOUNTING PLATE AND BOLTING PATTERN FOR MCMASTER-CARR HIGH CAPACITY EASY-ROLL CORROSION-RESISTANT CASTER WITH POLYURETHANE WHEELS (ITEM NO. 23355T52). IF DIFFERENT CASTERS ARE CHOSEN FOR THE GANGWAY, MOUNT PLATE SIZE/POSITION MIGHT REQUIRE ADJUSTMENTS.

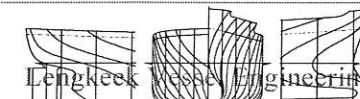
INFORMATION ONLY

Sheet 2 of 2



0	07/02/2018	MF	ISSUED TO TC FOR REVIEW/APPROVA
Rev	Date	By	Remarks

THIS DRAWING, DESIGN CONCEPT, AND SPECIFICATIONS ARE THE PROPERTY OF
LENKEEK VESSEL ENGINEERING INC.
AND SHALL NOT BE COPIED IN ANY MANNER, USED FOR MANUFACTURE, SOLD,
TRANSFERRED, COMMUNICATED TO A THIRD PARTY, OR USED FOR ANY PURPOSE
OTHER THAN THAT FOR WHICH IT IS SUPPLIED, WITHOUT THE EXPRESS WRITTEN
CONSENT OF LENKEEK VESSEL ENGINEERING.



60 Wilson Ave, Suite 101 Timmins ON Canada P4N 2S7 Tel: (705) 288-6066 www.lengkeek.com
11 Portland St, Suite 301 Dartmouth NS Canada B2Y 1H1 Tel: (902) 458-3094

Client: CCG/DFO

Title: CCGS SIR WILLIAM ALEXANDER
20FT ALUMINUM GANGWAY

Drawn By: MF		Date: 12/01/2018	
Checked By: BH		Scale: 1:5 UNO	Rev: 0
Approval/Rev		DWG NO:	
Client		J17073-S02	
Class			
Flag			
		Sht No. 2 of 2	