



Royal Canadian Mounted Police
Gendarmerie royale du Canada

Doc. no: PD-PC-30
Date: 2020-03-25

Purchase Description

Jacket, Take Down

This document has 16 pages including the drawings.

This document was created in English.

The document is available in English and French.

English/Anglais
Français/French

The photograph on this page is for reference only.



Modifications

| Date | Para. No's | Modifications |
|------------|--|--|
| 1998-11-26 | | Original Purchase Description |
| 1999-02-10 | Para. 2 | Corrected typographical errors. |
| 1999-03-04 | Scale of Measurements | Size XXL added and lengths for S-XL changed. |
| 2008-02-15 | Re-issued | Name of jacket changed. |
| 2011-07-05 | Para. 2.1, 2.5 Para. 2.6 Para. 2.8 Sealed Samples ref. Scale of Measurements Drawing #1 Drawing #2 | Removed colour reference. Removed pocketing reference & added description for hook & loop tape. Specified minimum retro reflective coefficient for 3M silver reflective material transfer film. References changed from sealed samples to viewing samples. Bottom sleeve elastic graded instead of one size. To show knot at end of draw cord. Clarify measurements of Police Hideaway flap. |
| 2013-05-13 | Para. 2.3 Para.2.5 Para. 2.6 & 2.8 | Updated thread requirement and added a certificate of compliance. Updated dome fastener requirement and added a certificate of compliance. Added certificate of compliance requirement. |
| 2017-01-04 | | Reformatted purchase description Measurement locations added |
| 2020-03-25 | | Revised purchase description. |
| | | |
| | | |
| | | |
| | | |
| | | |
| | | |
| | | |
| | | |
| | | |

RCMP VIEWING SAMPLE

A viewing sample, when available, will be supplied to the successful bidder.

This will be used to guide manufacturer in all factors not covered by this purchase description or referred to therein. Variation from the purchase description may appear in the sample in which case the purchase description must govern.

It may be obtained from:

Royal Canadian Mounted Police
ATTN: Uniform & Equipment Program
(440 Coventry Road, Warehouse Building)
73 Leikin Drive
Ottawa, Ontario
K1A 0R2

It will be sent “prepaid” and is to be returned “prepaid”.

The viewing sample must be returned to the RCMP in the same condition as received by the manufacturer. Lost or damaged viewing samples must be replaced by an identical item or the RCMP must be reimbursed for the cost of an acceptable replacement.

PURCHASE DESCRIPTION
Jacket, Take Down

1 Definitions

- 1.1 This purchase description must govern the manufacture and inspection of the Jacket, Take Down. The specific item covered under this purchase description with stock numbers is as follows:
- i. 3980- Jacket, Take Down/ Blouson d'intervention.
 - ii. 3981- Jacket, Take Down, Special/ Blouson d'intervention, taille spéciale.
- 1.2 This purchase description, or other information issued in connection therewith, may only be used for specific enquiries, solicitations, or orders placed on behalf of the Royal Canadian Mounted Police.
- 1.3 This purchase description supersedes all previous purchase descriptions for RCMP Jacket, Take Down.
- 1.4 This purchase description has been translated into French from this original English language document.

2 Applicable Specifications

- 2.1 The following publications are applicable to this purchase description and to the issues in effect on the date of the solicitation, unless otherwise specified.
- 2.2 **Canadian General Standards Board (CAN/CGSB);**
86.1-2003 Care Labelling of Textiles
- 2.3 **General Services Administration – US Government**
Commercial Item Description
A-A-50199A Thread, Polyester Core, Cotton or Polyester-Covered
- 2.4 **American Society for Testing and Materials (ASTM)**
D5169-98 (2015) Standard Test Method for Shear Strength (Dynamic Method) of Hook and Loop Touch Fasteners
5170-98 (2015) Standard Test Method for Peel Strength (“T” Method) of Hook and Loop Touch Fasteners
E808-01 (R2016) Standard Practice for Describing Retroreflection¹

E809-08 (R2013)

Standard Practice for Measuring Photometric Characteristics of Retroreflectors¹

3 **General Requirements**

- 3.1 The article or material covered by this specification must be free from material and manufacturing defects that may affect its appearance or serviceability.
- 3.2 **Design** – The Jacket, Take Down must consist of a polyurethane coated nylon shell, black in colour. The Jacket, Take Down must have dome fasteners for the front closure. The bottom hem must be sewn to form a channel for the elastic draw cord and cord lock. There must be a Police hide away patch on the front and back of the jacket.

4 **Detail Requirements**

4.1 **Components**

- 4.1.1 **Shell Material** – The shell material must be 100% nylon, plain weave, $84 \pm 8 \text{ g/m}^2$, with a polyurethane coating on the back side, black in colour, to match viewing sample.
- 4.1.2 **Elastic** – The elastic must be a knitted elastic, with a composition of at least 65% polyester blended with rubber and a medium finish. The elastic must be black in colour, 13 mm wide with a stretch and recovery as per component viewing sample. Narroflex #NF824 has been known to meet the requirements.
- 4.1.3 **Elastic Drawcord** – The drawcord must be round braided polyester elastic, black in colour, 2.4 mm, with maximum elongation of 135% and full recovery. Cansew style EBR C-38 is known to meet the requirement.
- 4.1.4 **Thread** – The thread must be polyester wrap, polyester core, Tex 40, Type II of matching colour, meeting U.S. Government Commercial Item Description A-A-50199A.
- 4.1.5 **Interlining** – The interlining must be a non-woven, polyester or polyester/rayon blend with a mass of $34 \text{ g/m}^2 \pm 5 \text{ g/m}^2$. It must be charcoal in colour.

- 4.1.6 **Dome Fastener** – The dome fastener must be a standard type 24 ligne fastener. All metal parts to be brass with a 15 mm matte black, powder coated cap. Universal SW61 has been known to meet.
- 4.1.7 **Hook and Loop** – The hook and loop tape must be woven nylon, black in colour, with a high life cycle. The combined hook and loop must have no less than 8 P.S.I length-wise shear strength with initial peel strength of not less than 1 P.I.W. when tested to ASTM D5169-98 (2015), standard test method for shear strength [dynamic method] of hook and loop touch fasteners and ASTM D5170-98 (2015), standard test method for peel strength ["T" method] of hook and loop touch fasteners."
- 4.1.8 **Cord Lock** – The cord lock must be a low-profile, cylindrical cord lock, acetal composition, spring-loaded and black in colour. The cord lock for the hem channel must be shaped with a maximum diameter of 13 mm and a maximum depth of 11.2 mm. Texfast style #S217B has been known to meet the requirement.
- 4.1.9 **Eyelets** – The eyelets must be black in colour with a 5-6 mm diameter hole, brass or aluminum.
- 4.1.10 **Grosgrain Ribbon** – The ribbon must be nylon grosgrain ribbon, black in colour and come in 1 cm width.
- 4.1.11 **Retro reflective Letterings** – The retro reflective lettering must be exposed, wide angle, retroreflective lenses, silver material in the form of a heat transfer film. The retro reflective lettering must meet a minimum coefficient of retro reflection, R_A , that are determined in accordance with the procedures defined in E808-01 (R2016) and E809-08 (R2013). 3M Scotchlite™ 8725N silver material in the form of a heat transfer film has been known to meet these requirements.
- 4.2 **Size and Dimensions** – The Jacket, Take Down to this purchase description must be supplied in the sizes specified in the scale of measurements attached and forming part of this purchase description.
- 4.3 **Construction Requirements**
- 4.3.1 **Stitching** – All stitching must be lockstitch. There must be not less than three nor more than four stitches per centimetre. The beginning and ending of all stitching must be securely backstitch tacked unless secured by other stitching.

- 4.3.2 **Body** – The body of the jacket must be made of shell material as specified in para. 4.1.1.
- 4.3.2.1 **Front** – The front must be fitted with six (6) dome fasteners specified in para. 4.1.6. The first dome fastener must be placed at the top of the jacket and the last dome fastener must be placed at the bottom centred in the cord channel. The other dome fasteners must be equidistant from each other. The front facing must be interlined with the material specified in para. 4.1.5. There must be a floating yoke on both left and right front of the jacket, sewn at the shoulder and the arm seams as well as the front closure seam. Each floating yoke must be secured by hook and loop tape as specified in para. 4.1.7 and positioned as per drawing 3. There must be a hideaway flap as specified in para. 4.3.3 applied under the left front floating yoke.
- 4.3.2.2 **Back** – The back must have a floating yoke measuring 25.0 cm deep from the centre back neckline sewn at the shoulder and the arm seams. There must be a hideaway flap as specified in para. 4.3.3 applied under the centre back floating yoke. The bottom corners of the hideaway flap must have a piece of loop tape as specified in para. 4.1.7, 1.25 cm x 3.8 cm ± 0.2 cm applied in a vertical direction. There must be corresponding pieces of hook tape applied under the floating yoke to secure the hideaway flap when not deployed. The floating yoke must be secured by hook and loop tape as specified in para. 4.1.7 1.25 cm x 3.8 cm ± 0.2 cm and positioned in the centre back as per drawing 3.
- 4.3.3 **‘Hide Away’ Police Flaps** – The front and back ‘hide away’ flaps must be constructed from a single layer of shell material as specified in Para. 4.1.1 folded in half with the raw ends overlapped. The finished dimensions of the front flap must be 14 cm ± 0.5 cm wide by 12 cm ± 0.5 cm high with only 8 cm showing below the bottom of the front flap. There must be retro reflective lettering POLICE and RCMP GRC as specified in para. 4.3.9.1 applied to the front flap. The finished dimensions of the back flap must be 33.5 cm ± 0.5 cm wide x 14 cm ± 0.5 cm high with only 12 cm showing below the bottom of the back flap. There must be retro reflective lettering POLICE and RCMP GRC as specified in para. 4.3.9.2 applied to the back flap. The dimensions of the hideaway flaps and the retro reflective lettering must be as shown in drawing 3. The flaps must tuck up under the yoke when not deployed.
- 4.3.4 **Coat Hanger** – A 6–7 cm long coat hanger, constructed from grosgrain ribbon as specified in para. 4.1.10 must be centered at the neck in accordance with the viewing sample.

- 4.3.5 **Draw Cord Channel** – The bottom edge must be turned up 3.0 cm and stitched to form a channel for the elastic draw cord specified in para. 4.1.3. The hem channel must have two eyelets as per para. 4.1.9, 6 cm from the edge of the left front as identified in drawing 4. An elastic drawcord as specified in para. 4.1.3 must be securely attached into the right front seam and threaded through the hem channel. It must continue through the cord lock as specified in para. 4.1.8, and through the eyelet outside the hem channel. It must be threaded back through the second eyelet and continue back through the cord lock where the drawcord must be knotted. When assembled completely, the cord lock must be hidden in the channel with only the looped end of the elastic drawcord showing as per drawing 4. When the hem is laid flat, the elastic drawcord must be laid flat.
- 4.3.6 **Sleeve** – The sleeves must be made of shell material as specified in para. 4.1.1. They must be one-piece construction. The bottom of the sleeve must be turned and stitched with elastic specified in para. 4.1.2 inserted in the sleeve cuff channel.
- 4.3.7 **Pockets** – The jacket must have two lower front welt slash pockets made of shell material. The welt must be 2.5 cm ± 0.2 cm wide interlined with material specified in para. 4.1.5 inserted in welt. The pocket opening must measure 18 cm. The facing and construction details must match the drawing and viewing sample.
- 4.3.8 **Collar** – The collar must be a two-piece collar made of shell material interlined with the material specified in para 4.1.5. The centre back of the collar must have a width of 12 ± 0.5 cm. The front edges of the collar must have a width of 10 ± 0.5 cm. The collar length must be dimensioned as per the Scale of Measurements.
- 4.3.9 **Retro reflective Lettering** – The font must be Arial Black in retro reflective material as specified in para. 4.1.11. There must be no loose or unbonded edges, or loss of film. The reflective lettering must be durable and able to withstand a minimum of 50 washes.
- 4.3.9.1 **Front “POLICE” and “RCMP GRC” Letterings** –The front flap must have the lettering “RCMP GRC” measuring 1.5 cm high by 11 cm wide positioned over the “POLICE” measuring 2.5 cm high by 11 cm wide. The lettering must be positioned on the flap as shown in drawing 3.
- 4.3.9.2 **Back “POLICE” and “RCMP GRC” Letterings** – The back flap must have “POLICE” lettering measuring 7.5 cm high by 30 cm wide. The lettering must be positioned on the flap as shown in drawing 3.

4.4 **Marking and Cleaning Instructions Label** – Each Jacket, Take Down must have a durable label positioned on the middle top of the inside back directly below the collar seam. All text except for the RCMP stock number and size must be in size 6 font. The RCMP stock number and size must appear in size 8 font. The manufacturer’s identification must not appear anywhere on the garment except where indicated on the garment label. The label must contain the following information in English and French:

1. Item name in English as written in para. 1.1.
2. Item name in French as written in para. 1.1.
3. RCMP Stock number- reference contract documents. (Ex. 3980 000)
4. Size of the article, combining the size designation referenced in the English and French contract documents. (Ex. L-G)
5. Date of manufacture, in numeric format year/month (Ex. 2020/11)
6. Manufacturer identification (Company name or number).

| | |
|------------------------------|---|
| Machine wash warm | Lavage à l'eau tiède |
| Do not bleach | Ne pas utiliser d'agent de blanchiment |
| Do not use softeners | Ne pas utiliser d'agent assouplissant |
| Tumble Dry - Low temperature | Séchage par culbutage - à basse température |
| Steam Iron - Low temperature | Repassage à la vapeur - à basse température |
| Dry clean | Nettoyage à sec |

5 **Quality Assurance Provisions**

5.1 **Responsibility for Inspection** – Unless otherwise stipulated in the Contract, it is the Contractor's responsibility to satisfy the RCMP, Uniform and Equipment Program that the components and material being supplied conform to this specification. This may be accomplished by performing the tests specified in this specification or by demonstrating to the satisfaction of the RCMP, Uniform and Equipment Program that conformity to this specification of manufacturing processes is assured. The Contractor must use an independent commercial testing establishment.

5.2 The RCMP, Uniform and Equipment Program reserves the right to perform any inspection considered necessary to ensure the material and services conform to the specified requirements. For the purpose of inspection, a portion of each delivery not exceeding two percent or two out of any number delivered under 100 may be

put to tests that could destroy the articles. If found to be inferior or not in accordance with this purchase description, all articles so destroyed must be replaced by others of proper quality and pattern at the expense of the Contractor. The entire delivery may also be rejected if it is found that articles previously rejected due to non-repairable defects are redelivered for inspection.

- 5.3 The Contractor will be promptly notified when any articles are not accepted and such articles will be returned at the contractor's risk and expense.

6 **Scale of Measurement Definitions and Location References**

(Refer to the Scale of Measurements and Drawing No. 1)

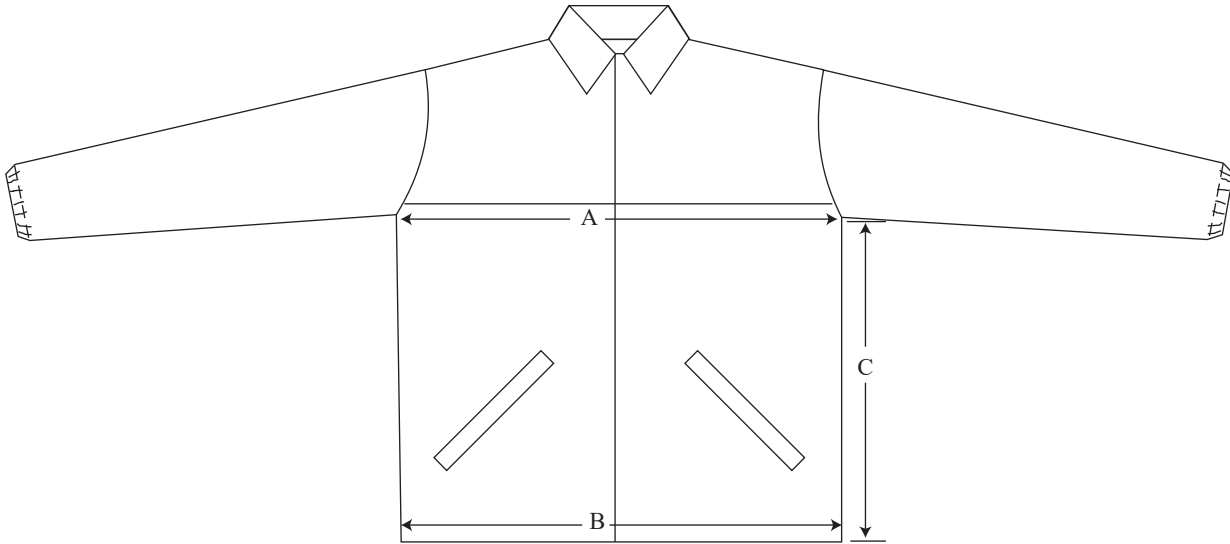
- 6.1 **Chest Circumference (total circumference)** – When placed flat, the chest circumference is the distance across the jacket, measured at the widest part of the chest. The result is doubled to measure total circumference. (A).
- 6.2 **Bottom Circumference (total circumference)** – When placed flat, the bottom is measured across the jacket bottom. The result is doubled to measure total circumference. (B).
- 6.3 **Side Length** – The length is the distance measured from the underarm seam at the side to the hem. (C).
- 6.4 **Back Length** - The length is the distance measured from the bottom of the collar at the back to the hem. (D).
- 6.5 **Back Width** – When placed flat, the back width is the distance measured across the back from armhole to armhole at the yoke seam. (E).
- 6.6 **Sleeve Length Overarm** - The overarm sleeve length is the distance from the armhole at the shoulder seam to the bottom edge of the sleeve cuff. (F).
- 6.7 **Sleeve Length Underarm** - The underarm sleeve length is the distance under sleeve from the underarm seam to the bottom edge of the sleeve cuff. (G).
- 6.8 **Sleeve Cuff Circumference (Relaxed)** - The sleeve cuff is measured at the bottom edge of the sleeve when relaxed. The result is doubled to measure the total circumference. (H).
- 6.9 **Sleeve Cuff Circumference (Stretched)** - The sleeve cuff is measured at the bottom edge of the sleeve when stretched. The result is doubled to measure the total circumference. (I).
- 6.10 **Elbow Circumference** – The sleeve must be folded in half to the underarm seam. The elbow is measured across the width of the sleeve at the fold. The result is doubled to measure total circumference. (J).
- 6.11 **Collar Length** – The collar length is measured along the seam from edge to edge. (K).

| Scale of Measurements – Jacket, Take Down | | | | | | | | | | | | |
|---|----------------------|-------------------------------|----------------------|-------------|-------------|------------|-----------------------|------------------------|-------------------------------------|---------------------------------------|---------------------|---------------|
| All measurements in cm unless otherwise indicated | | | | | | | | | | | | |
| Body Measurements | | Finished Garment Measurements | | | | | | | | | | |
| Size | Chest | Chest Circumference | Bottom Circumference | Side Length | Back Length | Back Width | Sleeve Length Overarm | Sleeve Length Underarm | Sleeve Cuff Circumference (Relaxed) | Sleeve Cuff Circumference (Stretched) | Elbow Circumference | Collar Length |
| S | 91-96 (36"-38") | 118 | 110 | 44 | 71 | 50 | 66 | 54.5 | 22 | 32 | 41 | 44 |
| M | 102-107 (40"-42") | 128 | 120 | 46.5 | 74 | 52.5 | 67 | 55 | 23 | 34 | 43 | 47 |
| L | 112-117 (44"-46") | 138 | 130 | 49 | 77 | 55 | 68 | 55.5 | 24 | 36 | 45 | 50 |
| XL | 122-127 (48"-50") | 148 | 140 | 51.5 | 80 | 57.5 | 69 | 56 | 25 | 37 | 47 | 53 |
| XXL | 132-137 (52"-54") | 158 | 150 | 54 | 83 | 60 | 70 | 56.5 | 26 | 38 | 49 | 56 |
| Tolerances ± | | 2.5 | 2.5 | 2.0 | 2.0 | 1.5 | 1.0 | 1.5 | 1.0 | 1.0 | 1.0 | 0.75 |
| Measurement Location | | A | B | C | D | E | F | G | H | I | J | K |

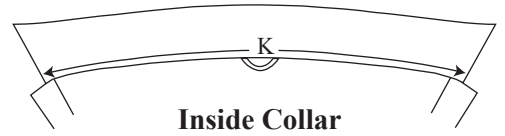
Drawing 1

PD-PC-30

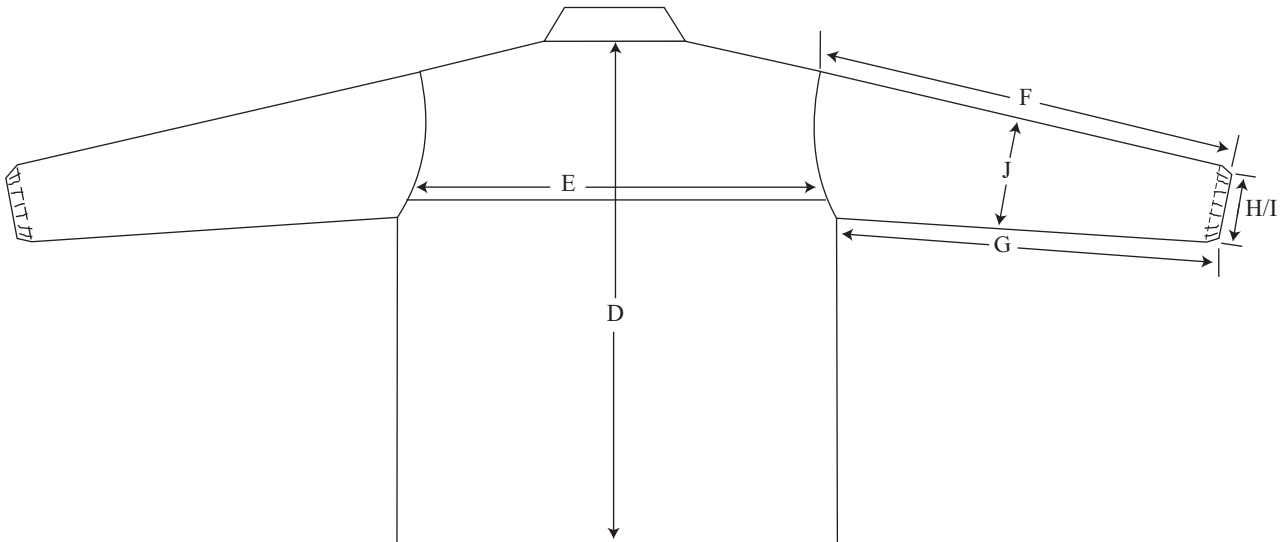
Jacket, Take Down Measurement Location Chart



Front View



Inside Collar



Rear View

NOT TO SCALE

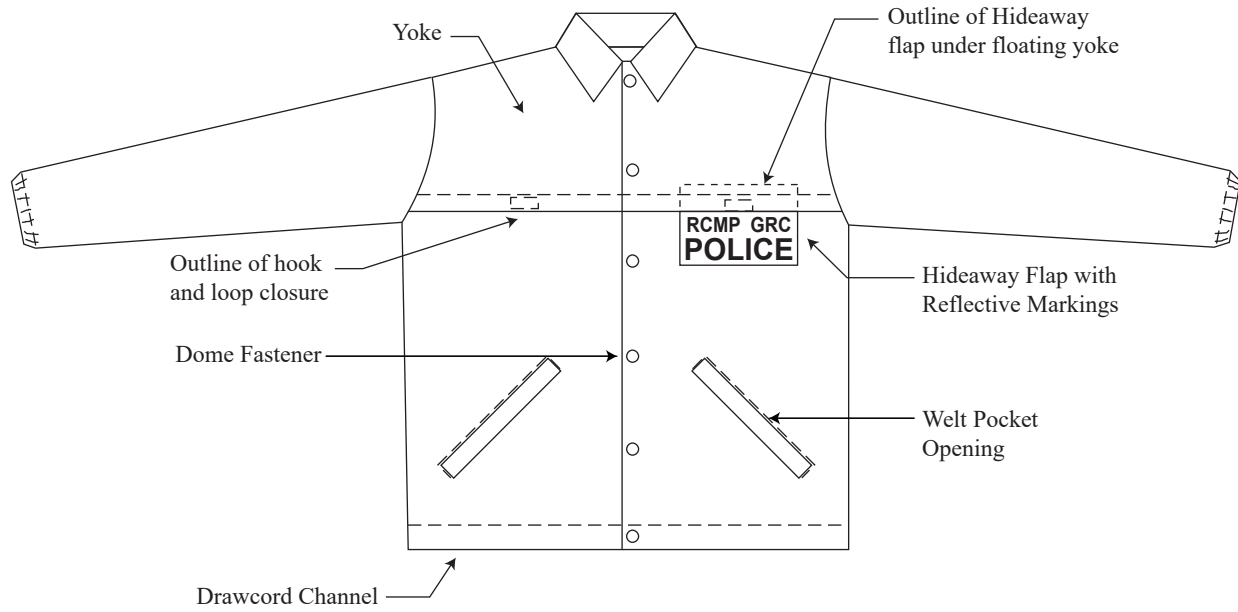
All measurements are shown in centimeters.

± 0.5 cm tolerance acceptable unless otherwise indicated.

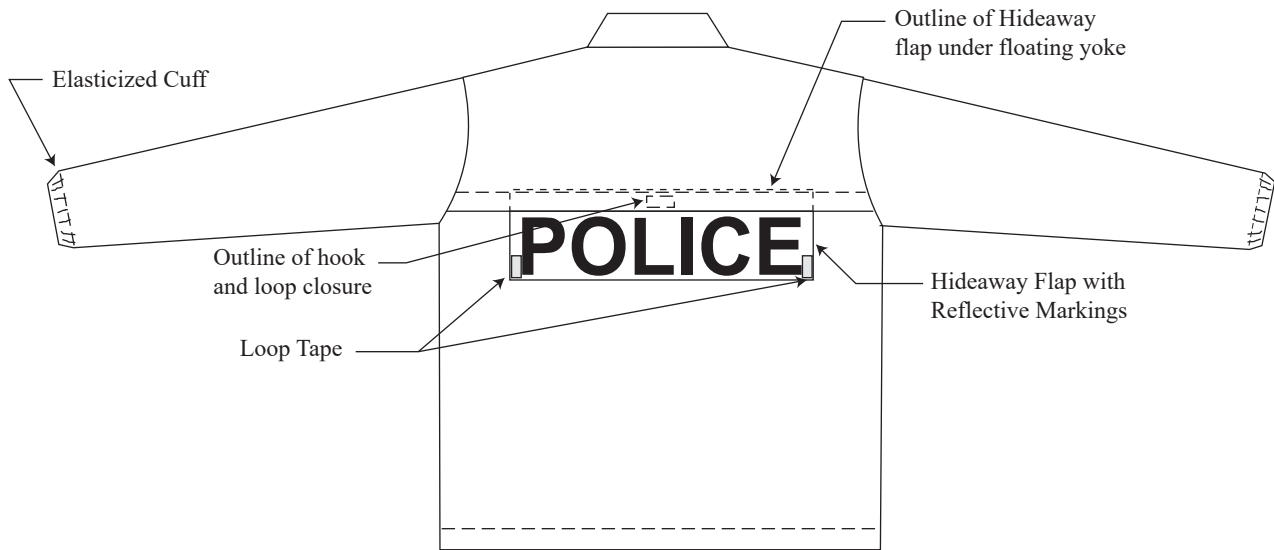
Drawing 2

PD-PC-30

Jacket, Take Down



Front View



Rear View

NOT TO SCALE

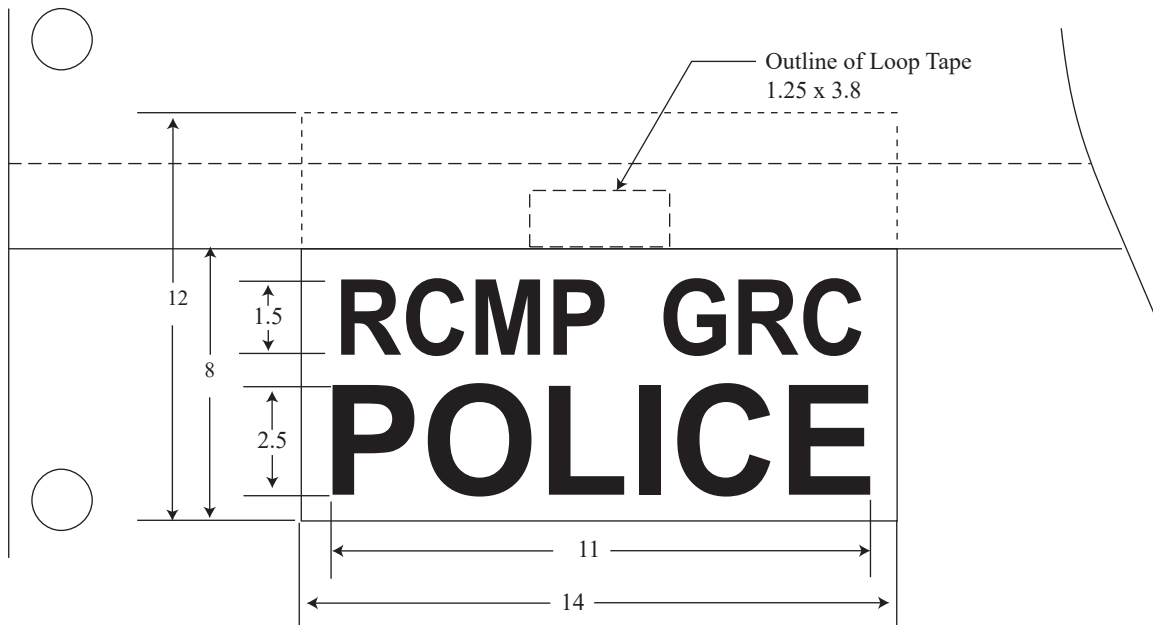
All measurements are shown in centimeters.

± 0.5 cm tolerance acceptable unless otherwise indicated.

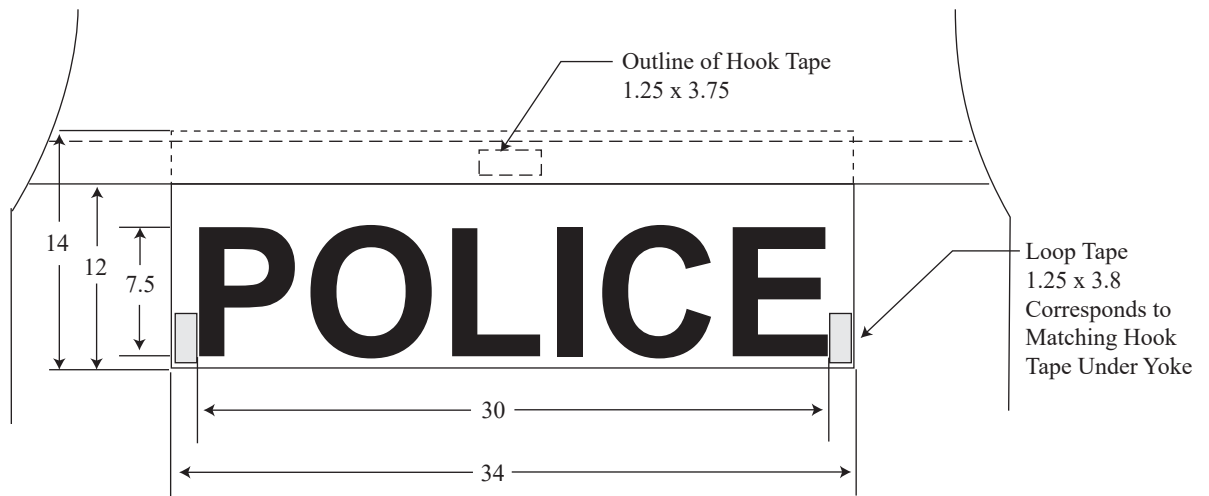
Drawing 3

PD-PC-30

Jacket, Take Down Hideaway Flaps with Reflective Lettering Detail



**Reflective RCMP GRC/POLICE Marking
on Hideaway Flap of Left Front of Jacket**



**Reflective POLICE Marking
on Hideaway Flap on Back of Jacket**

NOT TO SCALE

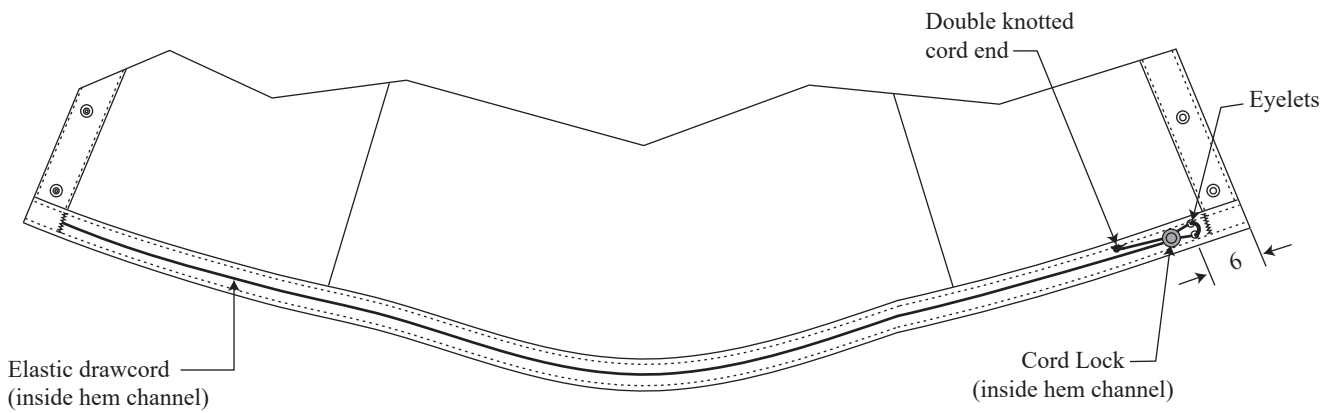
All measurements are shown in centimeters.

± 0.5 cm tolerance acceptable unless otherwise indicated.

Drawing 4

PD-PC-30

Jacket, Take Down Hem Channel Detail View



Hem Channel - Interior View

NOT TO SCALE

All measurements are shown in centimeters.

± 0.5 cm tolerance acceptable unless otherwise indicated.