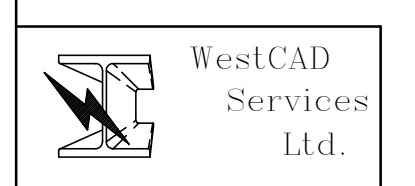
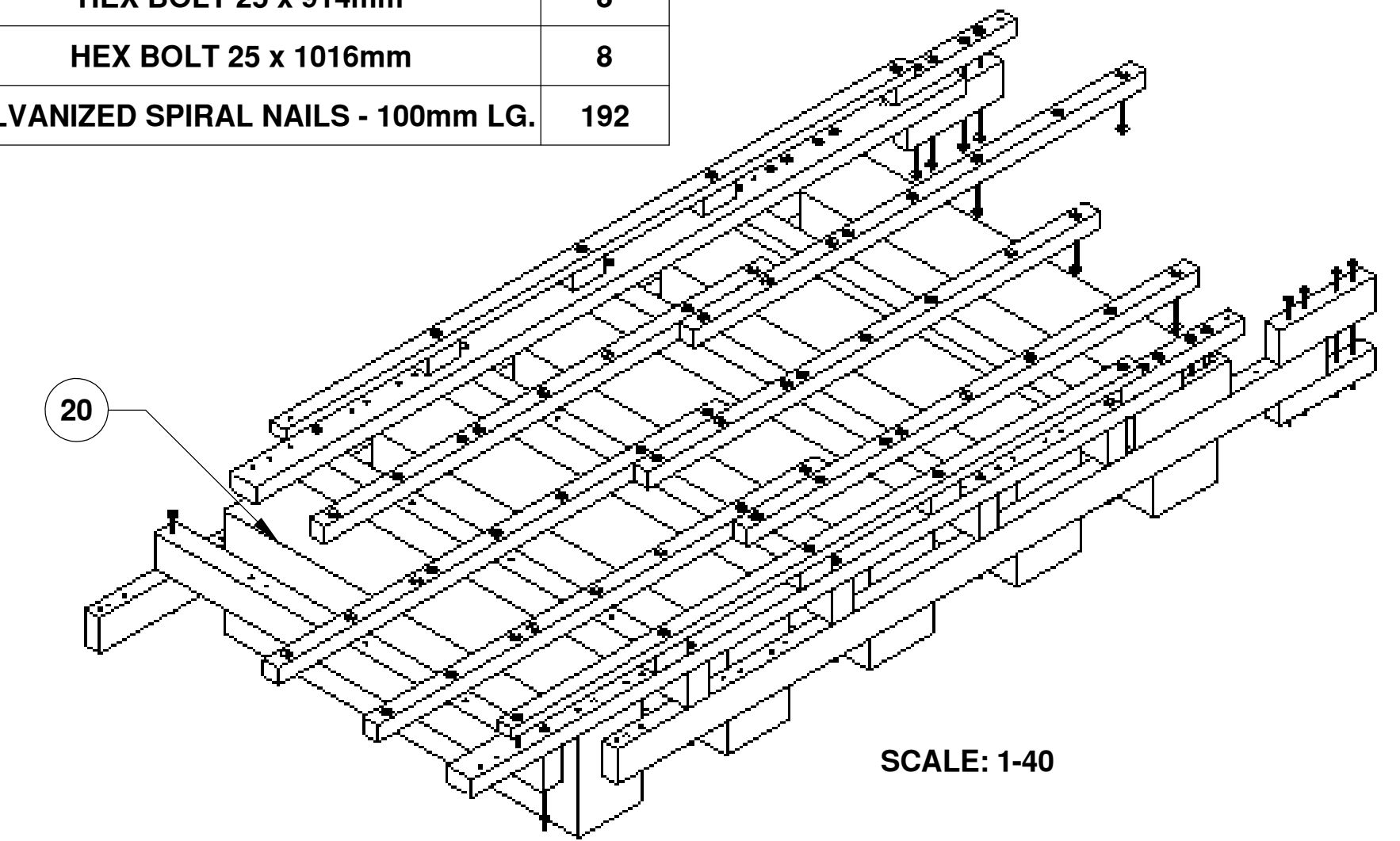


**TIMBER MEMBERS**

ITEM NO.	QTY.	TIMBER MEMBERS	DESCRIPTION	MATERIAL
1	2	FLANGE	(12x6) 292 X 141 x 6706 LG.	14 LB CREOSOTE TREATMENT #1 BTR FIR
2	5	CROSSTIE	(12x8) 292 x 191 x 3658 LG.	14 LB CREOSOTE TREATMENT #1 BTR FIR
3	2	STRINGER	(10x6) 241 X 141 X 6706 LG.	14 LB. CREOSOTE TREATMENT #1 BTR FIR
4	6	JOIST	(6x6) 141 x 141 x 4267 LG.	14 LB. CREOSOTE TREATMENT #1 BTR FIR
5	6	RISERS	(6x6) 141 x 141 x 300 LG.	ACZA
6	2	RAIL	(4x6) 89 x 141 x 5950 LG.	ACZA
7	2	UPPER STRINGER SPLICE	(6x6) 141 x 141 x 1140 LG.	ACZA
8	2	LOWER STRINGER SPLICE	(6x12) 141 x 292 x 900 LG.	14 LB CREOSOTE TREATMENT #1 BTR FIR
9	2	UPPER FLANGE SPLICE	(6x12) 141 x 292 X 900 LG.	14 LB CREOSOTE TREATMENT #1 BTR FIR
10	2	LOWER FLANGE SPLICE	(6x8) 141 x 191 x 900 LG.	14 LB CREOSOTE TREATMENT #1 BTR FIR
20	5	FOAM BOUYANCY BILLET	1000 x 597 x 3352 LG.	
21	28	DECK PLATES	(12x2) 305 x 38 x 2440 LG.	ACZA

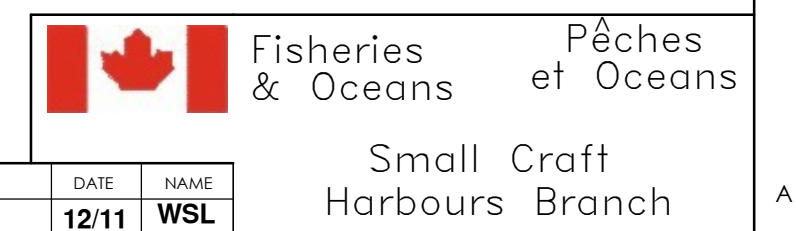
**HARDWARE**

ITEM NO.	HARDWARE	QTY
11	HEX BOLT 25 x 812mm	10
12	WASHERS 25mm	112
13	HEX NUTS 25mm	56
14	HEX BOLT 25 x 457mm	21
17	HEX BOLT 25 x 406mm	9
18	HEX BOLT 25 x 914mm	8
19	HEX BOLT 25 x 1016mm	8
22	GALVANIZED SPIRAL NAILS - 100mm LG.	192

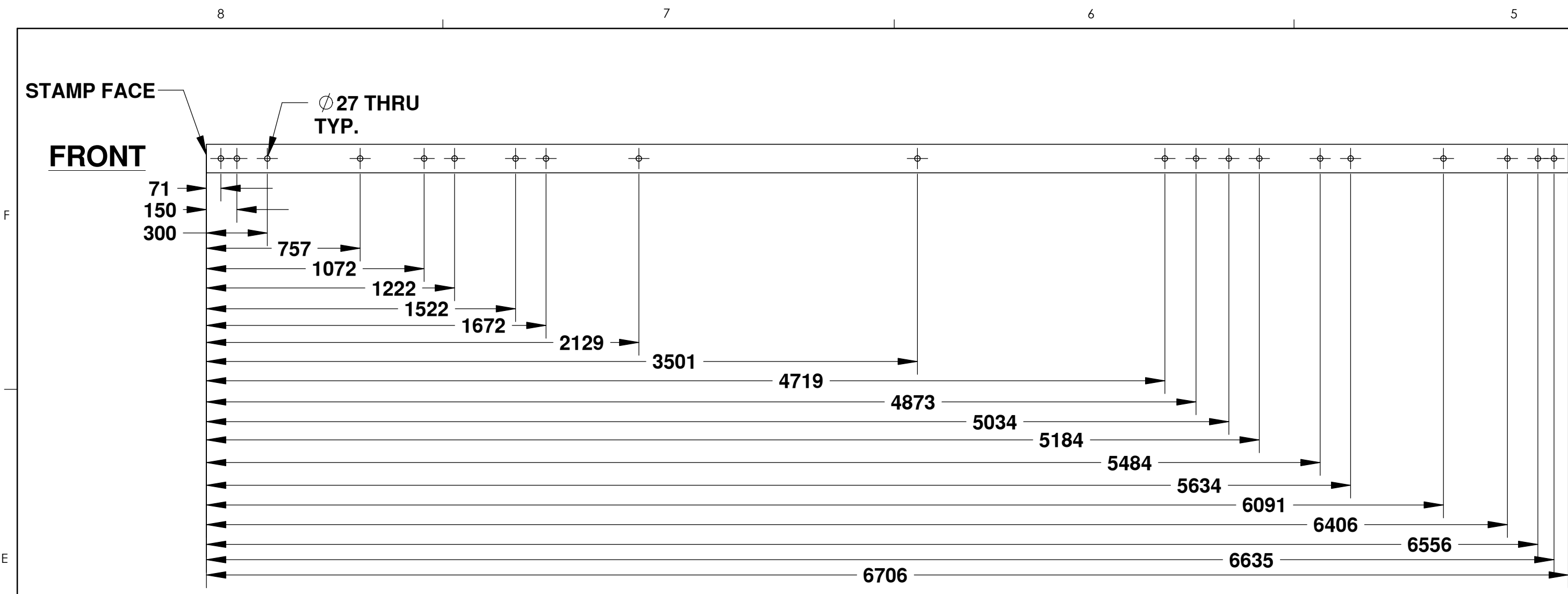


PROPRIETARY AND CONFIDENTIAL  
THE INFORMATION CONTAINED IN THIS DRAWING IS THE SOLE PROPERTY OF HER MAJESTY'S GOVERNMENT OF CANADA. ANY REPRODUCTION IN PART OR AS A WHOLE WITHOUT THE WRITTEN PERMISSION OF HER MAJESTY'S GOVERNMENT OF CANADA IS PROHIBITED.

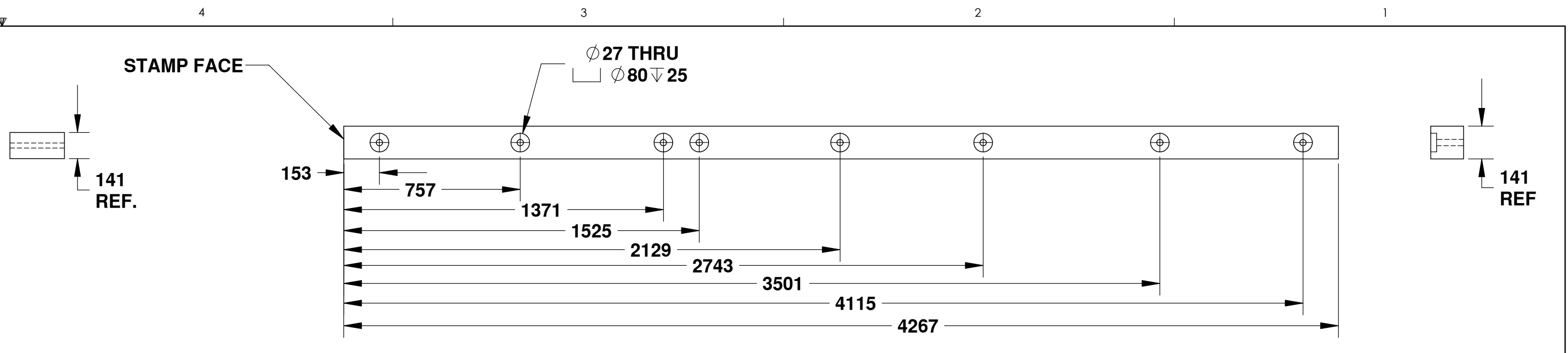
UNLESS OTHERWISE SPECIFIED:		DATE	NAME
DIMENSIONS ARE IN INCHES	DRAWN	12/11	WSL
TOLERANCES:	CHECKED		
FRACTIONAL: ±	ENG APPR.		
ANGULAR: MACHS: BEND ±	MFG APPR.		
TWO PLACE DECIMAL: ±			
THREE PLACE DECIMAL: ±			
INTERPRET GEOMETRIC TOLERANCING PER:	Q.A.		
MATERIAL:	COMMENTS:		
FINISH:			
APPLICATION	DO NOT SCALE DRAWING		



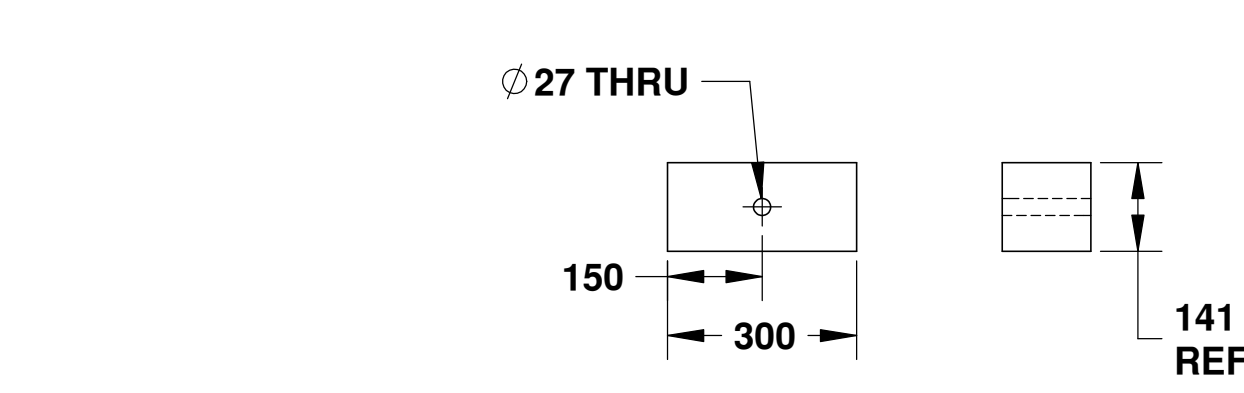
Small Craft Harbours Branch  
 TITLE: '2011 REVISION' 3.657m WIDE HEAVY FLOAT MODULE ASSEMBLY  
 SIZE DWG. NO. REV  
**D** FM12-HV-000 **G**  
 SCALE: 1:25 WEIGHT: SHEET 1 OF 1



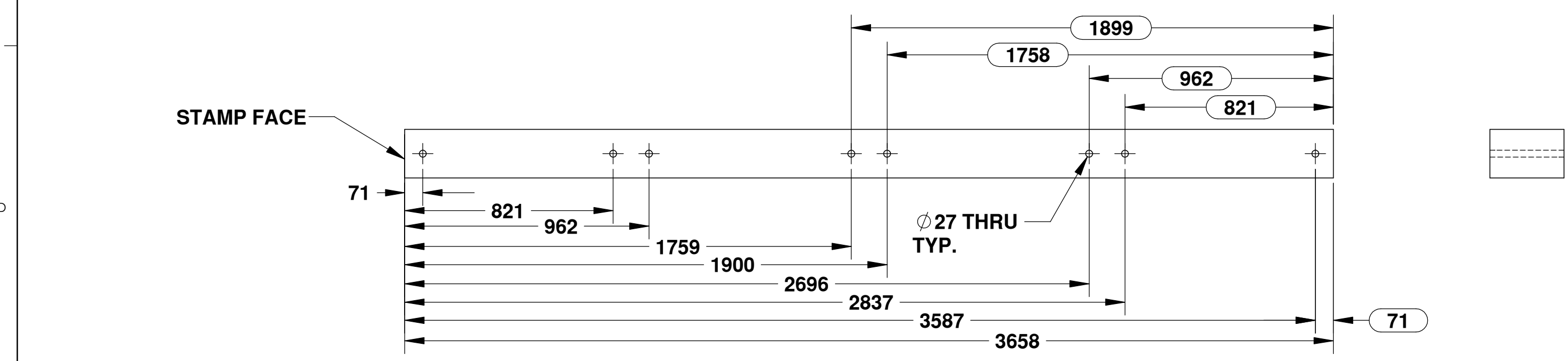
**FLANGE**  
292 x 141 (12x6)  
SCALE: 1-20  
(2 REQUIRED) ①



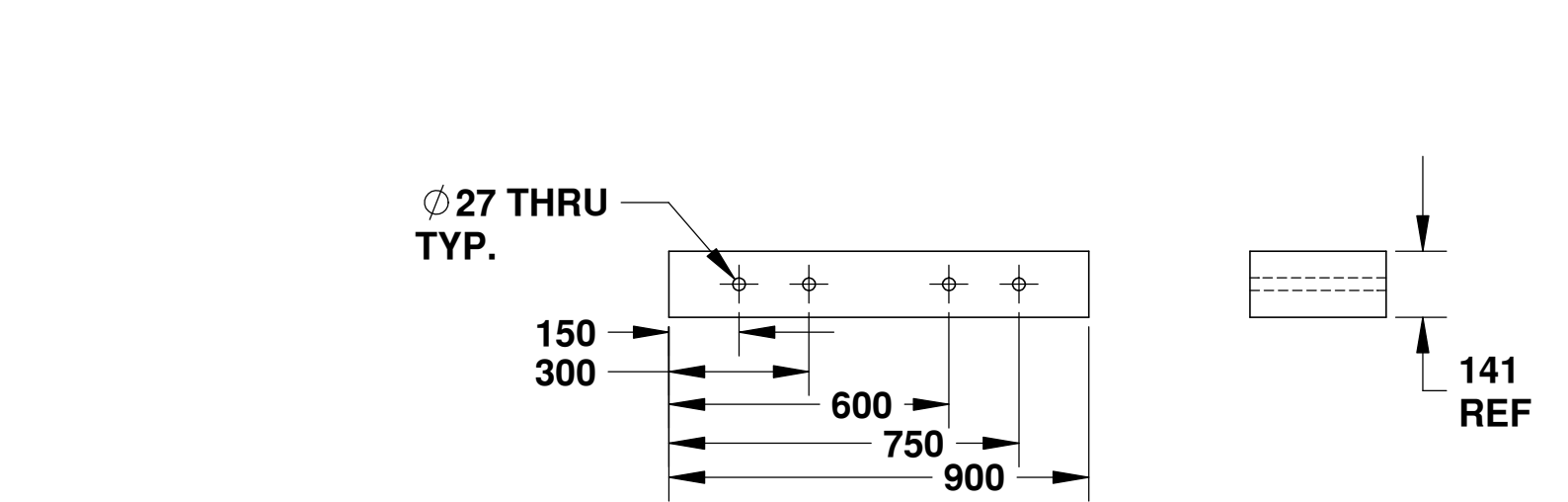
**JOIST**  
141 x 141 (6x6)  
SCALE: 1-16  
(6 REQUIRED) ④



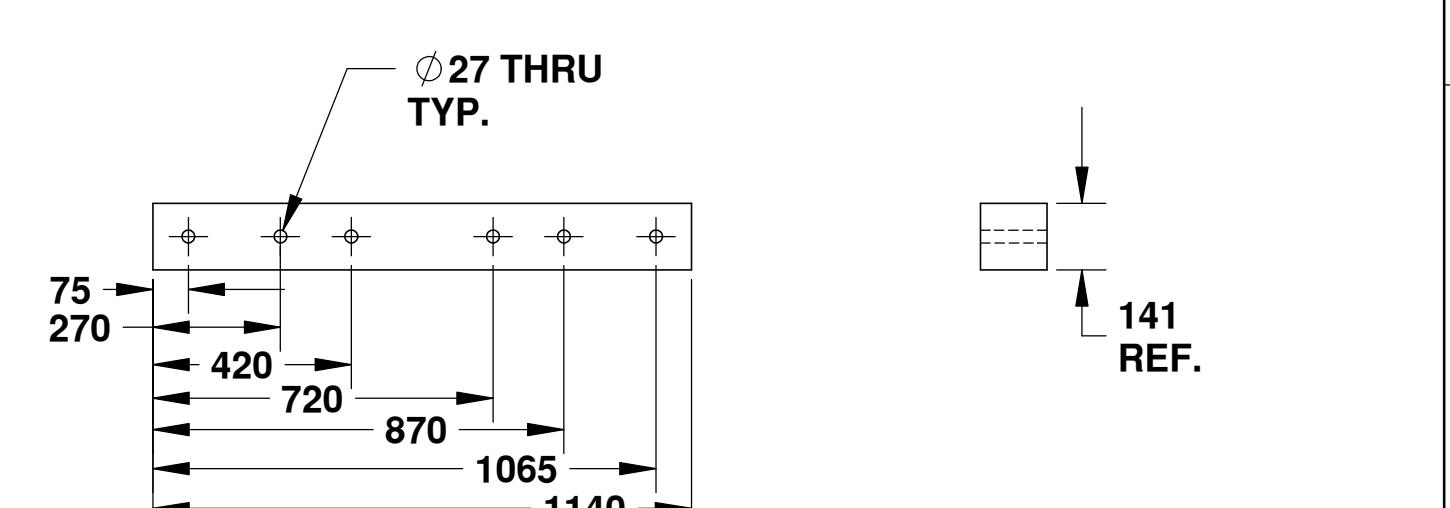
**RISER**  
141 x 141 (6x6)  
SCALE: 1-16  
(6 REQUIRED) ⑤



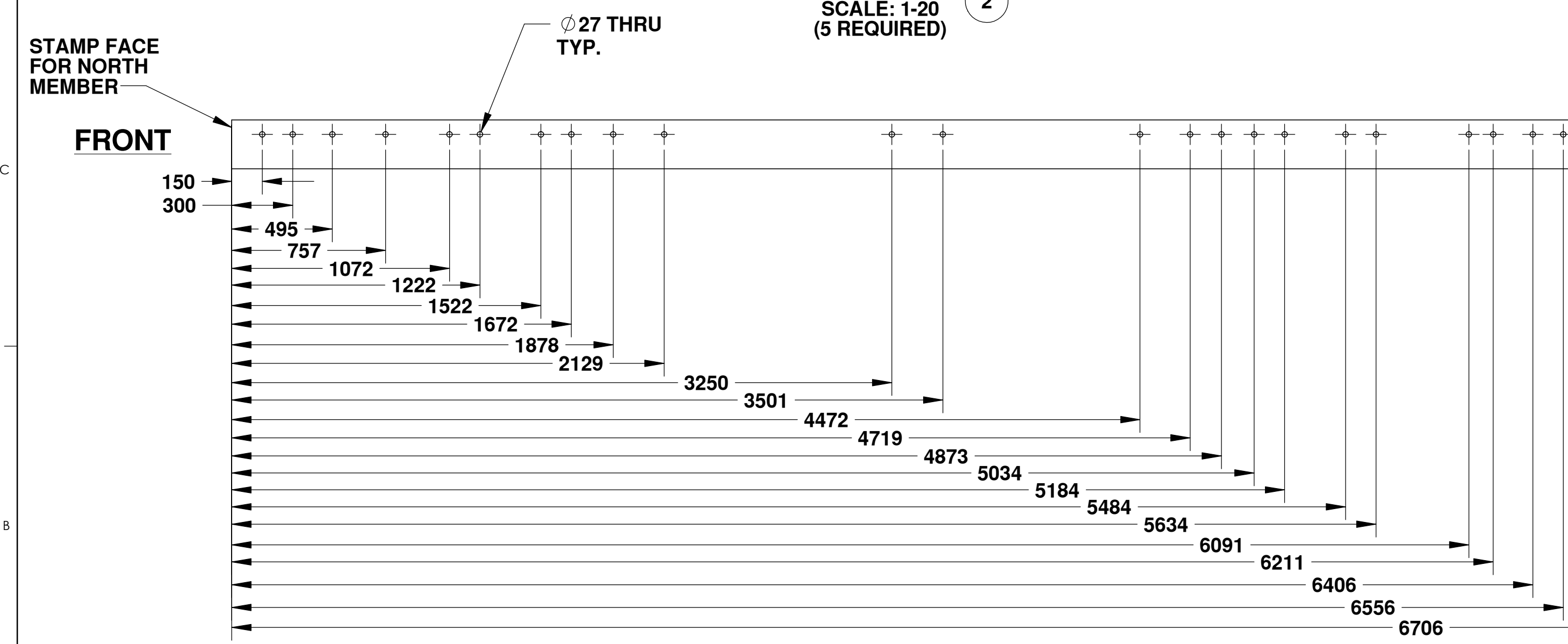
**CROSTIE (Reversible)**  
292 x 191 (12x8)  
SCALE: 1-20  
(5 REQUIRED) ②



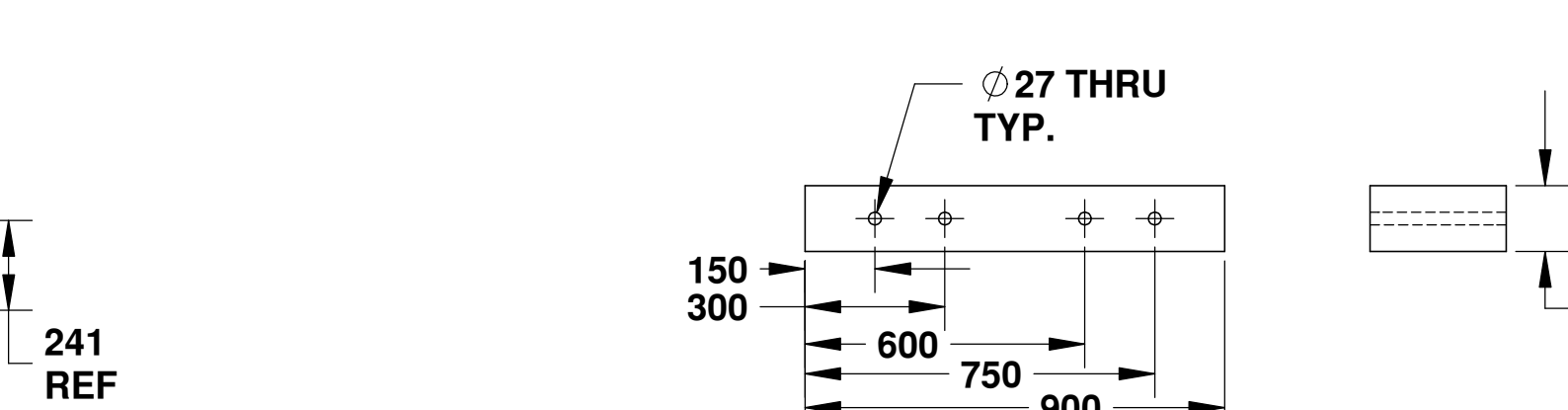
**LOWER STRINGER SPLICE**  
292 x 141 (12x6)  
SCALE: 1-16  
(2 REQUIRED) ⑧



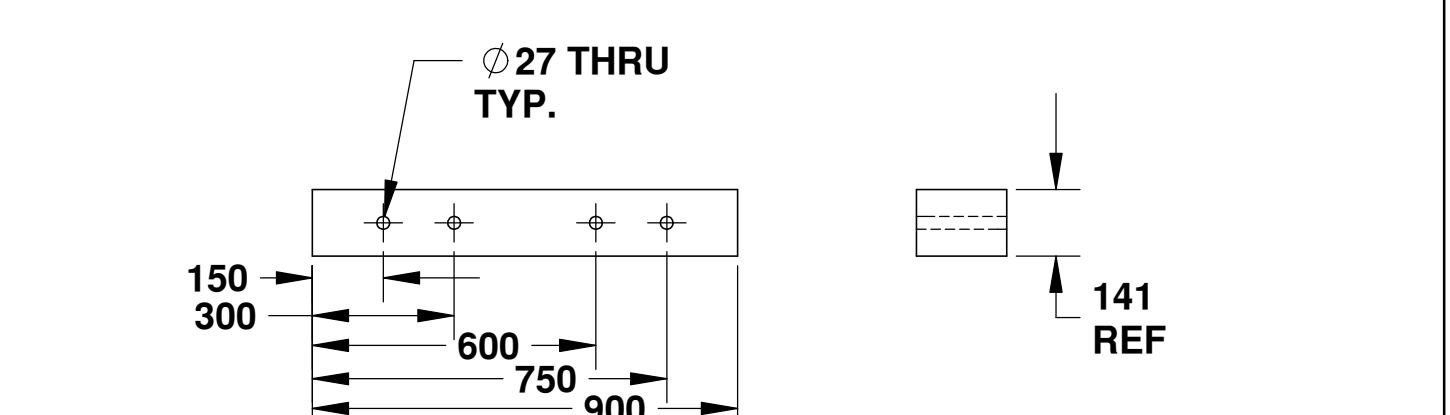
**UPPER STRINGER SPLICE**  
141 x 141 (6x6)  
SCALE: 1-16  
(2 REQUIRED) ⑦



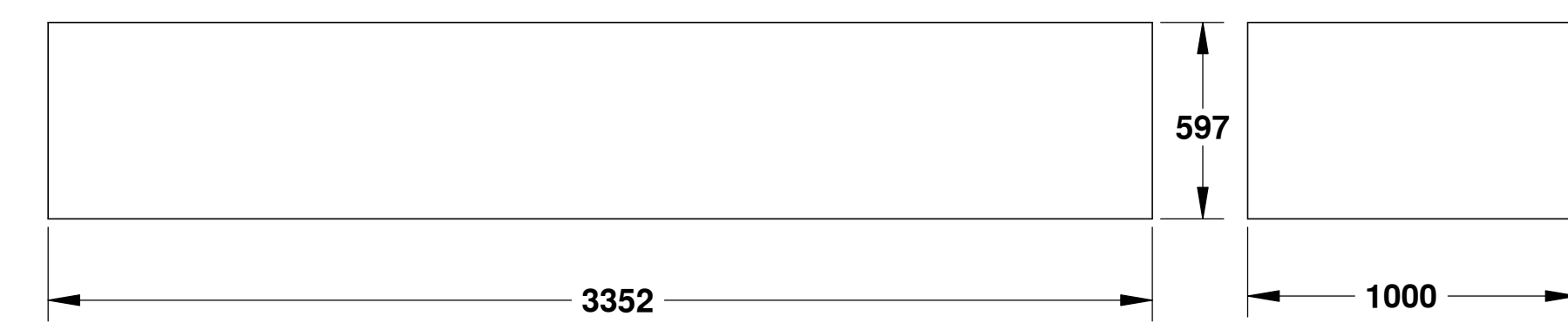
**STRINGER**  
241 x 141 (10x6)  
SCALE: 1-20  
(2 REQUIRED) ③



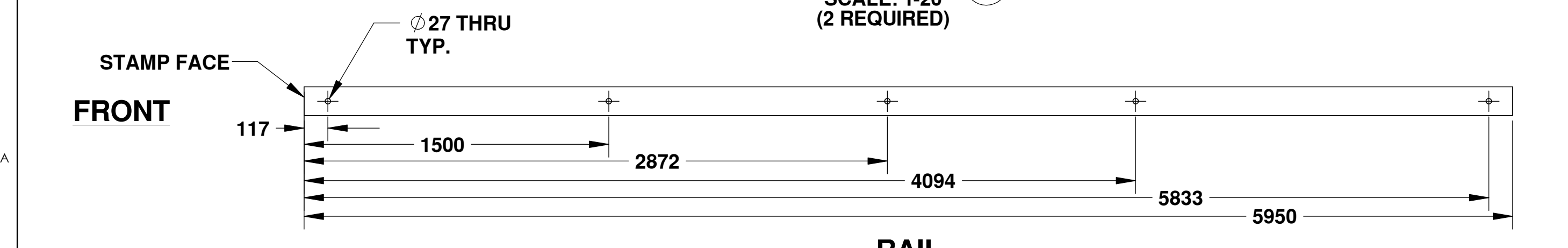
**UPPER FLANGE SPLICE**  
292 x 141 (12x6)  
SCALE: 1-16  
(2 REQUIRED) ⑨



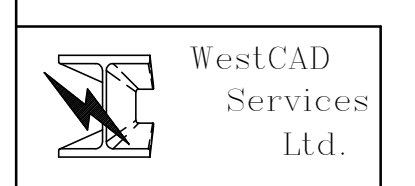
**LOWER FLANGE SPLICE**  
141 x 191 (6x8)  
SCALE: 1-16  
(2 REQUIRED) ⑩



**FOAM BUOYANCY FLOAT**  
1000 x 597 x 2438 LG.  
SCALE: 1-20  
(5 REQUIRED) ⑳



**RAIL**  
89 x 141 (4x6)  
SCALE: 1-20  
(2 REQUIRED) ⑥



HOLES ARE TO BE DRILLED CENTER LINE UNLESS OTHERWISE NOTED

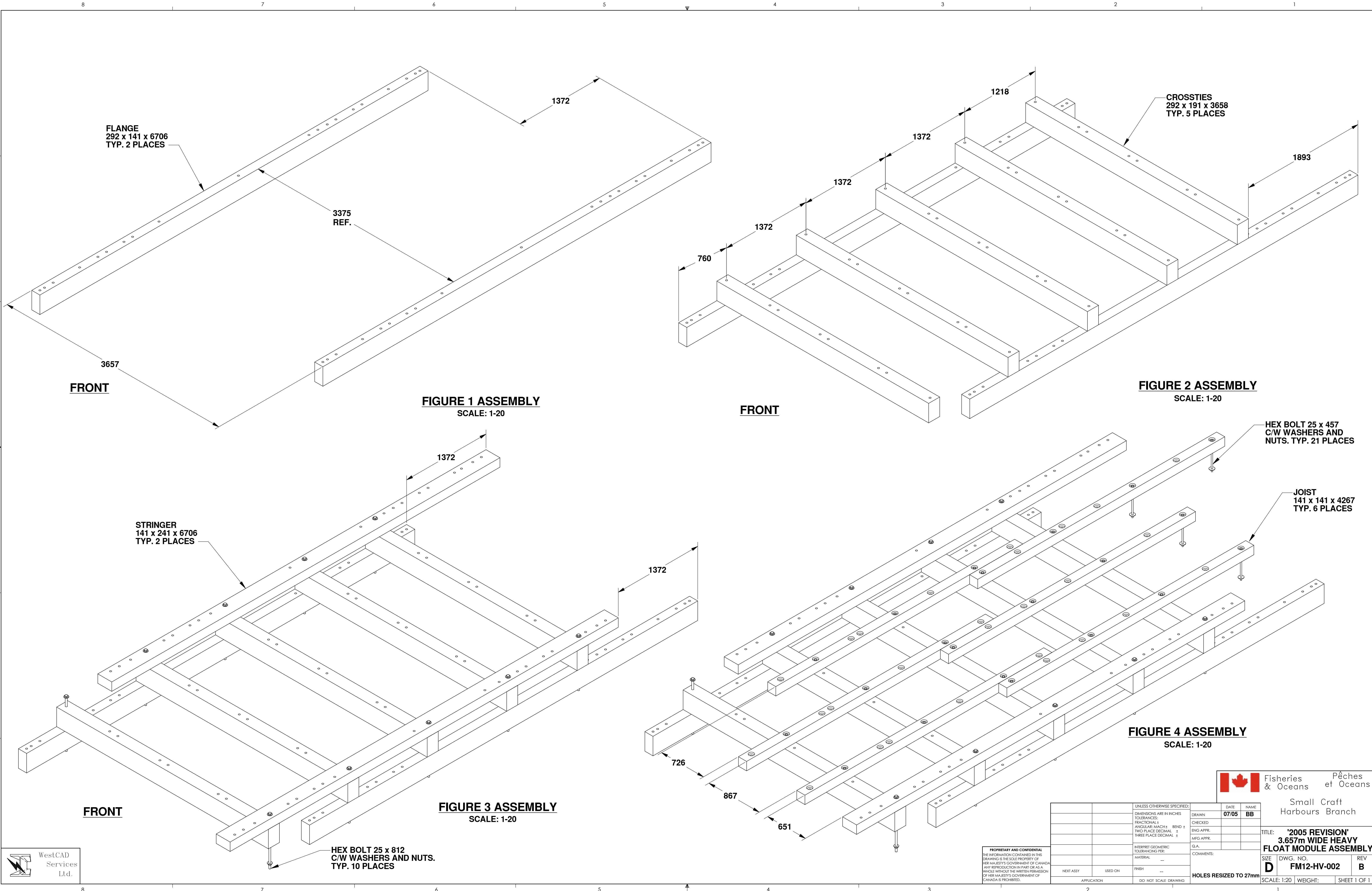
PROPRIETARY AND CONFIDENTIAL THE INFORMATION CONTAINED IN THIS DRAWING IS THE SOLE PROPERTY OF HER MAJESTY'S GOVERNMENT OF CANADA. ANY REPRODUCTION IN PART OR AS A WHOLE WITHOUT THE WRITTEN PERMISSION OF HER MAJESTY'S GOVERNMENT OF CANADA IS PROHIBITED.

UNLESS OTHERWISE SPECIFIED:		DATE	NAME
DIMENSIONS ARE IN INCHES	DRAWN	12/11	WSL
TOLERANCES:	CHECKED		
FRACTIONAL: ±	ENG APPR.		
ANGULAR: MACH 1: ±	MFG APPR.		
TWO PLACE DECIMAL: ±			
THREE PLACE DECIMAL: ±			
INTERPRET GEOMETRIC TOLERANCING PER:	Q.A.		
MATERIAL:	COMMENTS:		
FINISH:			
APPLICATION	DO NOT SCALE DRAWING		

Fisheries & Oceans / Pêches et Océans  
Small Craft Harbours Branch

TITLE: '2011 REVISION' 3.657m WIDE HEAVY FLOAT MODULE ASSEMBLY		
SIZE: D	DWG. NO.: FM12-HV-001	REV: G
SCALE: 1:16	WEIGHT:	SHEET 1 OF 1





FLANGE  
292 x 141 x 6706  
TYP. 2 PLACES

3375  
REF.

CROSTIES  
292 x 191 x 3658  
TYP. 5 PLACES

FRONT

**FIGURE 1 ASSEMBLY**  
SCALE: 1-20

FRONT

**FIGURE 2 ASSEMBLY**  
SCALE: 1-20

STRINGER  
141 x 241 x 6706  
TYP. 2 PLACES

HEX BOLT 25 x 457  
C/W WASHERS AND  
NUTS. TYP. 21 PLACES

JOIST  
141 x 141 x 4267  
TYP. 6 PLACES

FRONT

**FIGURE 3 ASSEMBLY**  
SCALE: 1-20

**FIGURE 4 ASSEMBLY**  
SCALE: 1-20

HEX BOLT 25 x 812  
C/W WASHERS AND NUTS.  
TYP. 10 PLACES

Fisheries & Oceans / Pêches et Océans

Small Craft Harbours Branch

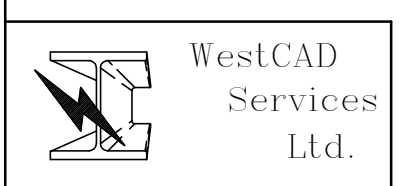
TITLE: '2005 REVISION'  
3.657m WIDE HEAVY  
FLOAT MODULE ASSEMBLY

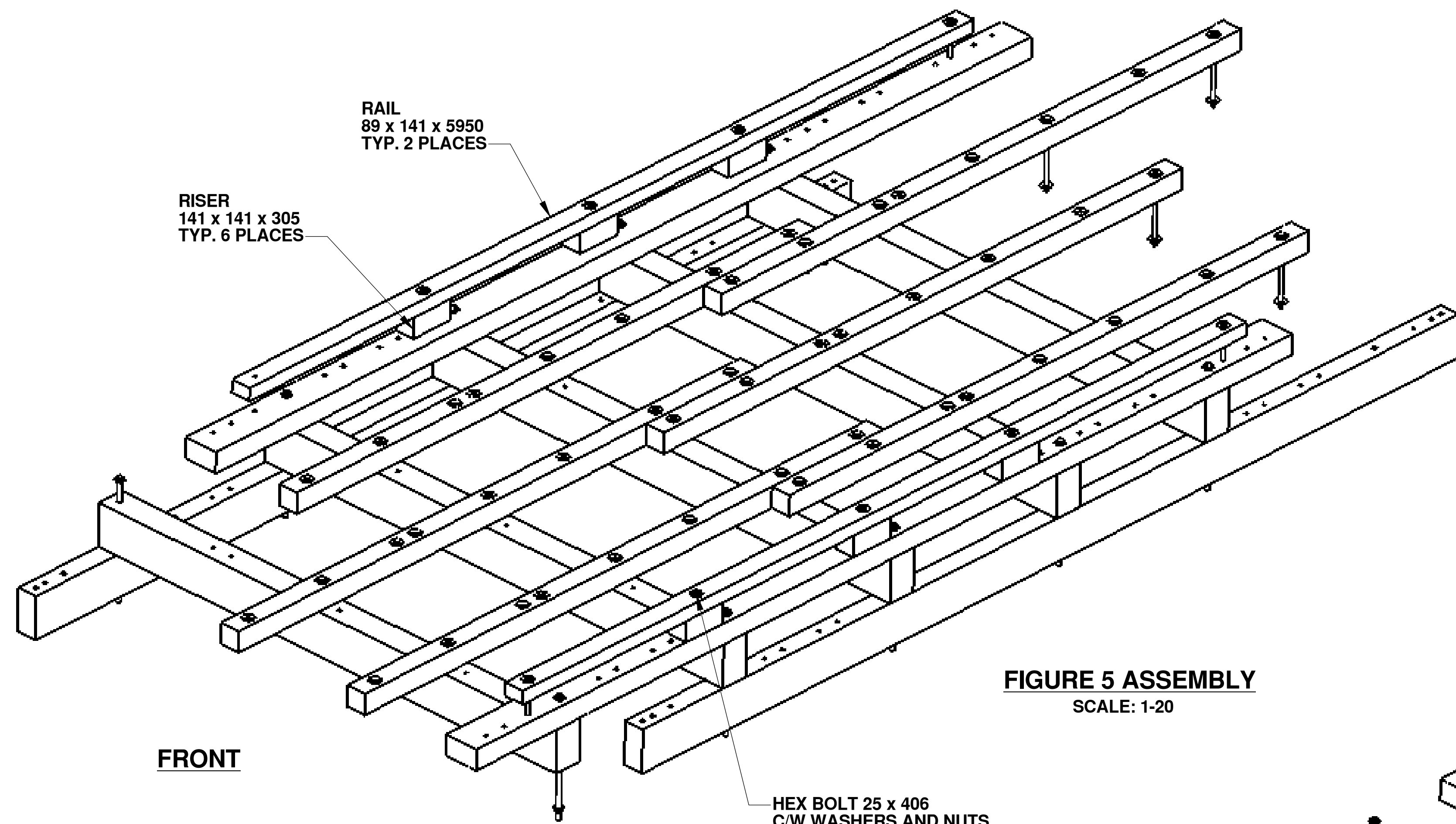
SIZE DWG. NO. REV  
**D** FM12-HV-002 **B**

SCALE: 1:20 WEIGHT: SHEET 1 OF 1

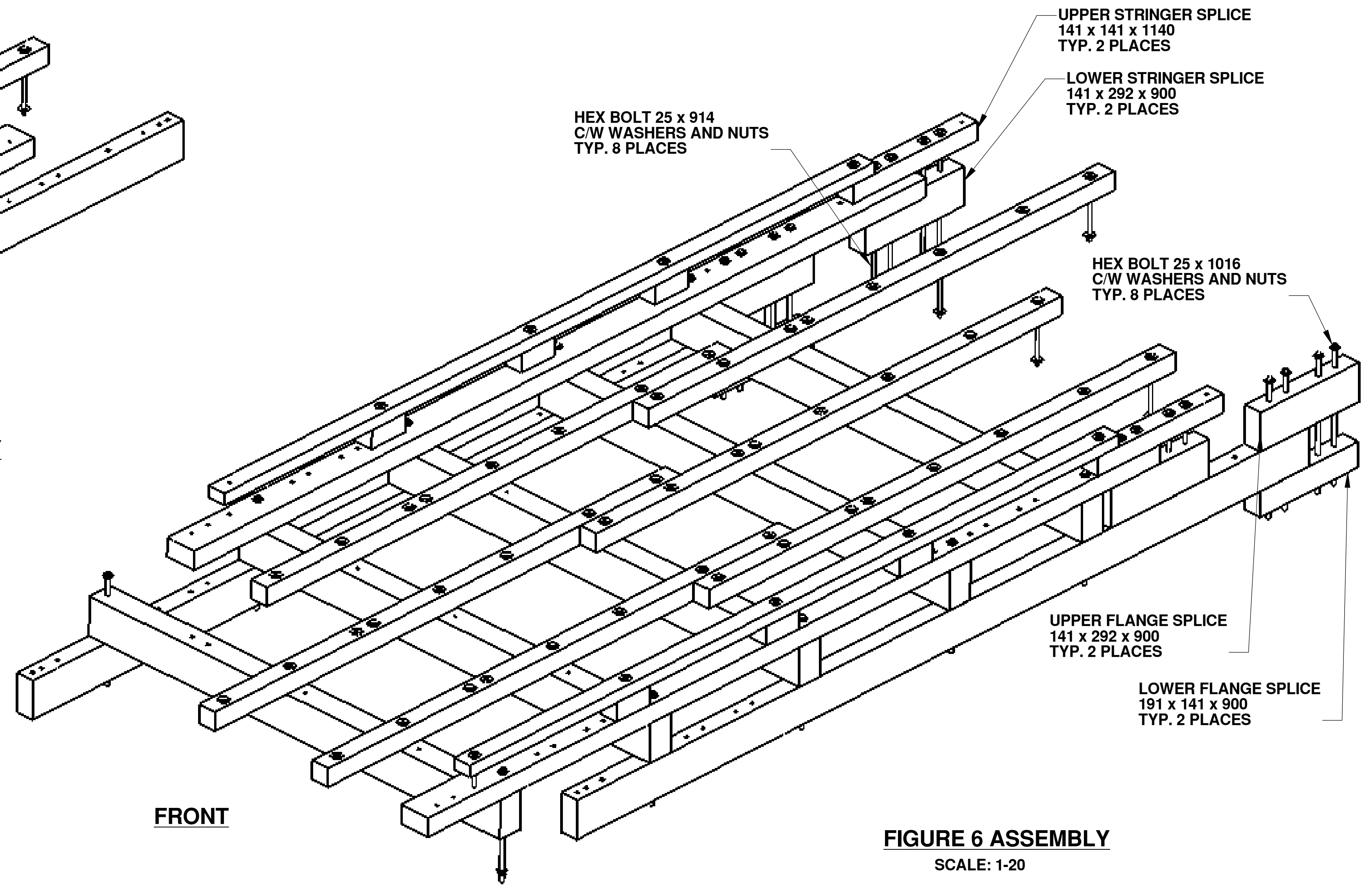
UNLESS OTHERWISE SPECIFIED:	DATE	NAME
DIMENSIONS ARE IN INCHES	07/05	BB
TOLERANCES:		
FRACTIONAL ±		
ANGULAR: MATCH BEND ±		
TWO PLACE DECIMAL ±		
THREE PLACE DECIMAL ±		
INTERPRET GEOMETRIC TOLERANCING PER:		
MATERIAL		
FINISH		
HOLES RESIZED TO 27mm		

PROPRIETARY AND CONFIDENTIAL  
THE INFORMATION CONTAINED IN THIS  
DRAWING IS THE SOLE PROPERTY OF  
HER MAJESTY'S GOVERNMENT OF CANADA.  
ANY REPRODUCTION IN PART OR AS A  
WHOLE WITHOUT THE WRITTEN PERMISSION  
OF HER MAJESTY'S GOVERNMENT OF  
CANADA IS PROHIBITED.

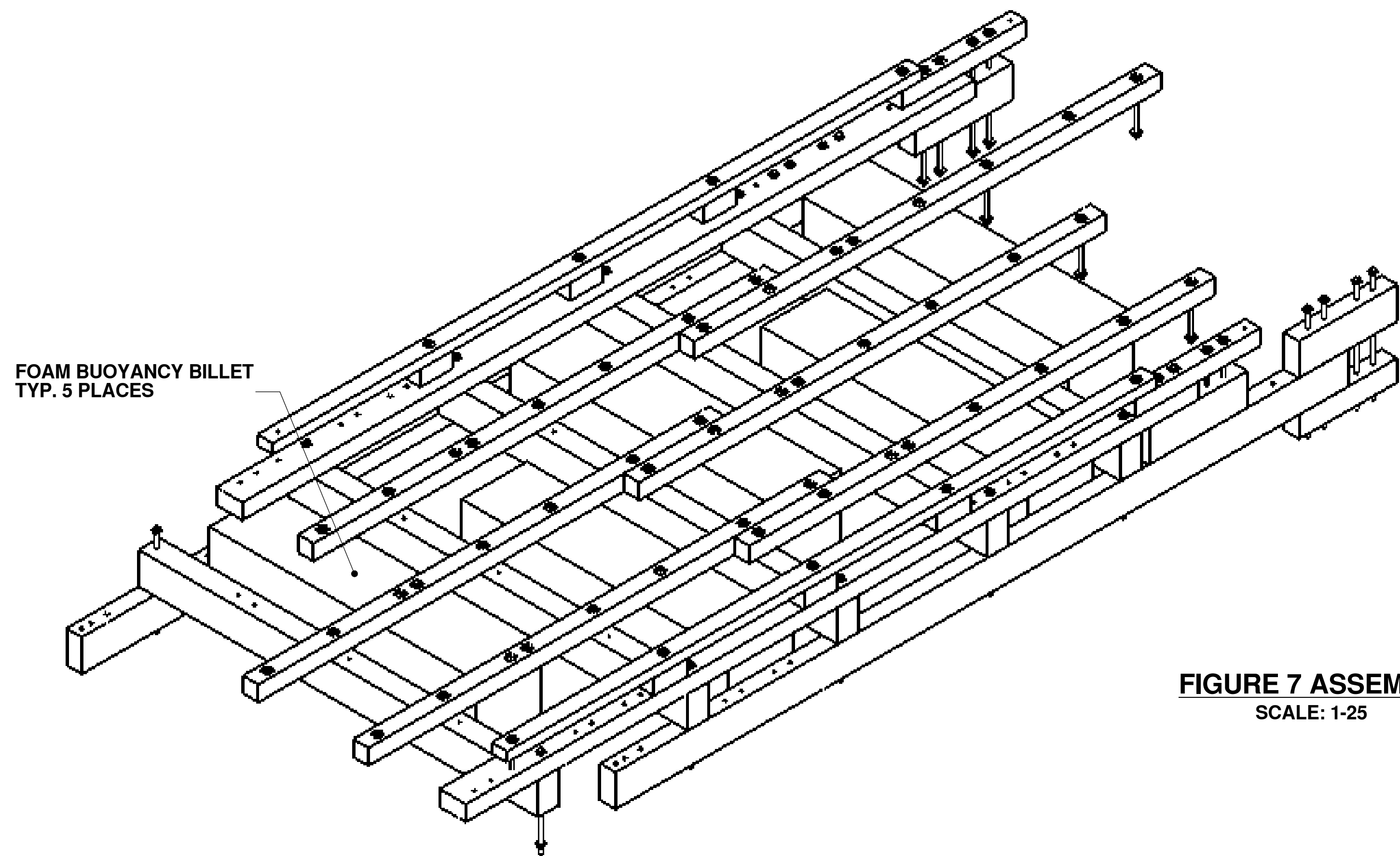




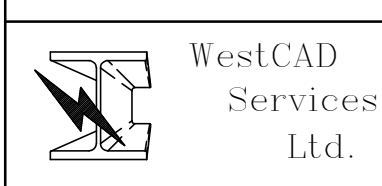
**FIGURE 5 ASSEMBLY**  
SCALE: 1-20



**FIGURE 6 ASSEMBLY**  
SCALE: 1-20



**FIGURE 7 ASSEMBLY**  
SCALE: 1-25



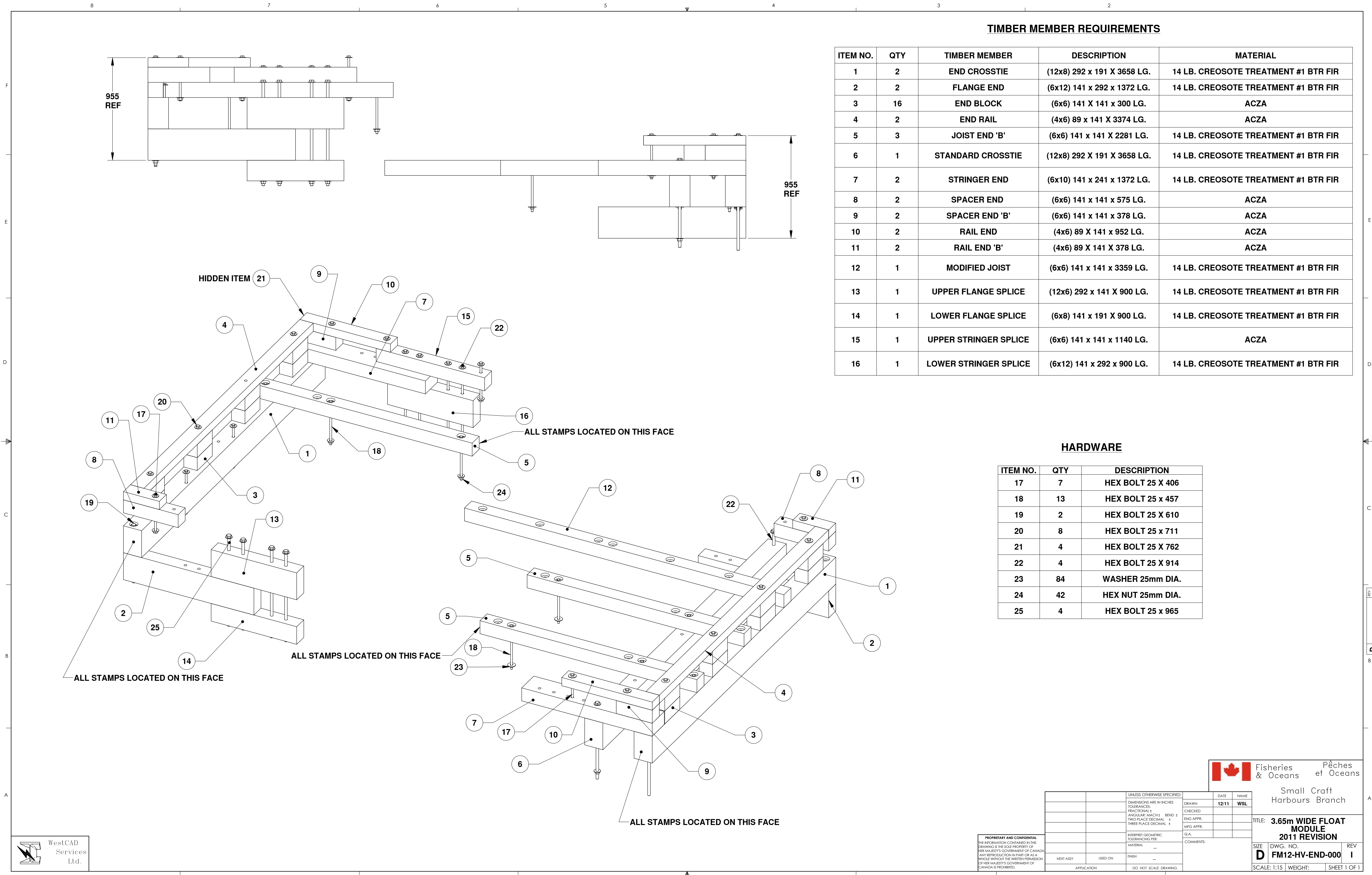
PROPRIETARY AND CONFIDENTIAL  
THE INFORMATION CONTAINED IN THIS DRAWING IS THE SOLE PROPERTY OF HER MAJESTY'S GOVERNMENT OF CANADA. ANY REPRODUCTION IN PART OR AS A WHOLE WITHOUT THE WRITTEN PERMISSION OF HER MAJESTY'S GOVERNMENT OF CANADA IS PROHIBITED.

UNLESS OTHERWISE SPECIFIED:		DATE	NAME
DIMENSIONS ARE IN INCHES		07/05	BB
TOLERANCES:			
FRACTIONAL ±			
ANGULAR: MACH ±			
TWO PLACE DECIMAL ±			
THREE PLACE DECIMAL ±			
INTERPRET GEOMETRIC TOLERANCING PER:			
MATERIAL			
NEXT ASSY		USED ON	FINISH
APPLICATION		DO NOT SCALE DRAWING	

Fisheries & Oceans / Pêches et Océans  
Small Craft Harbours Branch

TITLE: '2005 REVISION' 3.657m WIDE HEAVY FLOAT MODULE ASSEMBLY  
SIZE DWG. NO. REV  
D FM12-HV-003 B  
SCALE: 1:20 WEIGHT: SHEET 1 OF 1






**TIMBER MEMBER REQUIREMENTS**

ITEM NO.	QTY	TIMBER MEMBER	DESCRIPTION	MATERIAL
1	2	END CROSSTIE	(12x8) 292 x 191 X 3658 LG.	14 LB. CREOSOTE TREATMENT #1 BTR FIR
2	2	FLANGE END	(6x12) 141 x 292 x 1372 LG.	14 LB. CREOSOTE TREATMENT #1 BTR FIR
3	16	END BLOCK	(6x6) 141 X 141 x 300 LG.	ACZA
4	2	END RAIL	(4x6) 89 x 141 X 3374 LG.	ACZA
5	3	JOIST END 'B'	(6x6) 141 x 141 X 2281 LG.	14 LB. CREOSOTE TREATMENT #1 BTR FIR
6	1	STANDARD CROSSTIE	(12x8) 292 X 191 X 3658 LG.	14 LB. CREOSOTE TREATMENT #1 BTR FIR
7	2	STRINGER END	(6x10) 141 x 241 x 1372 LG.	14 LB. CREOSOTE TREATMENT #1 BTR FIR
8	2	SPACER END	(6x6) 141 x 141 x 575 LG.	ACZA
9	2	SPACER END 'B'	(6x6) 141 x 141 x 378 LG.	ACZA
10	2	RAIL END	(4x6) 89 X 141 x 952 LG.	ACZA
11	2	RAIL END 'B'	(4x6) 89 X 141 X 378 LG.	ACZA
12	1	MODIFIED JOIST	(6x6) 141 x 141 x 3359 LG.	14 LB. CREOSOTE TREATMENT #1 BTR FIR
13	1	UPPER FLANGE SPLICE	(12x6) 292 x 141 X 900 LG.	14 LB. CREOSOTE TREATMENT #1 BTR FIR
14	1	LOWER FLANGE SPLICE	(6x8) 141 x 191 X 900 LG.	14 LB. CREOSOTE TREATMENT #1 BTR FIR
15	1	UPPER STRINGER SPLICE	(6x6) 141 x 141 x 1140 LG.	ACZA
16	1	LOWER STRINGER SPLICE	(6x12) 141 x 292 x 900 LG.	14 LB. CREOSOTE TREATMENT #1 BTR FIR

**HARDWARE**

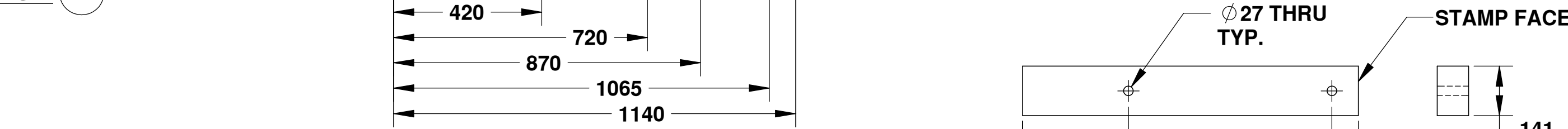
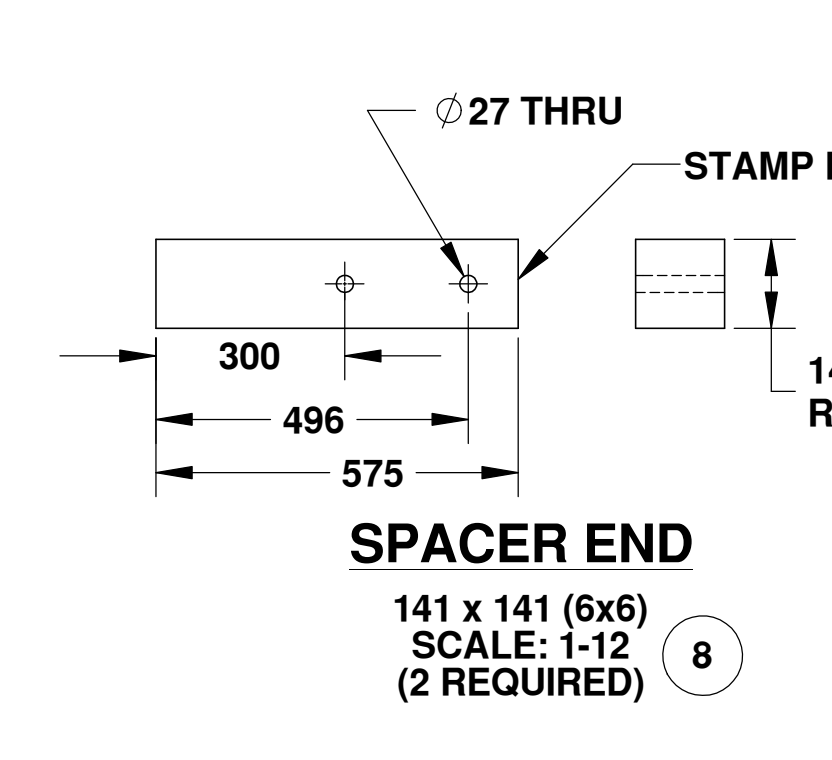
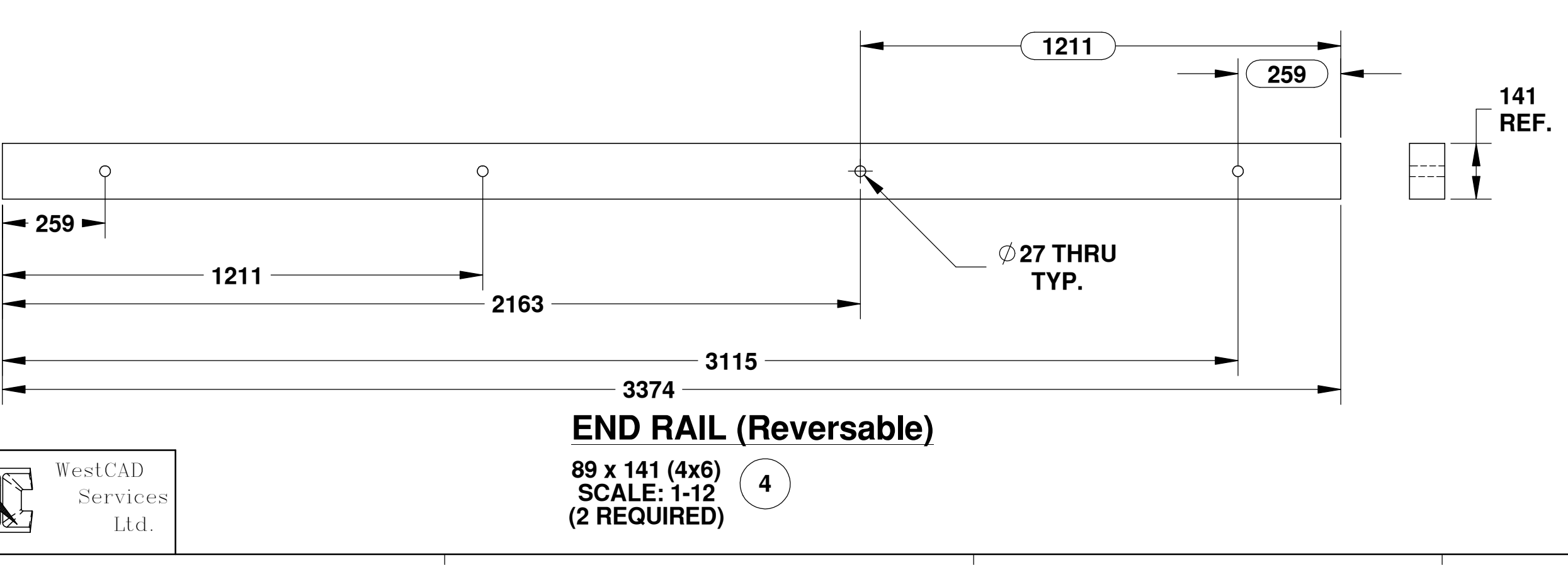
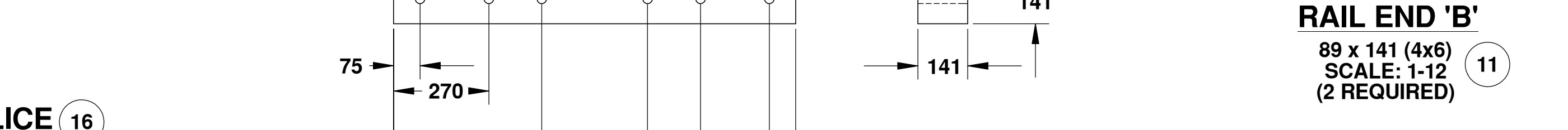
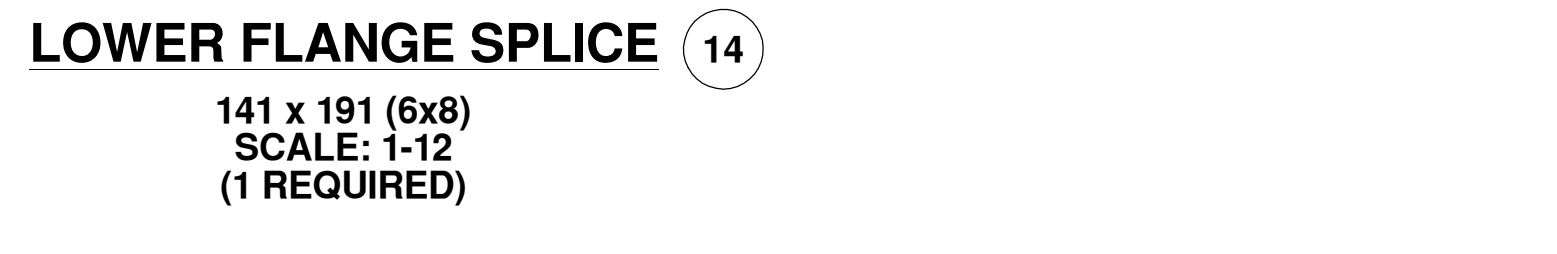
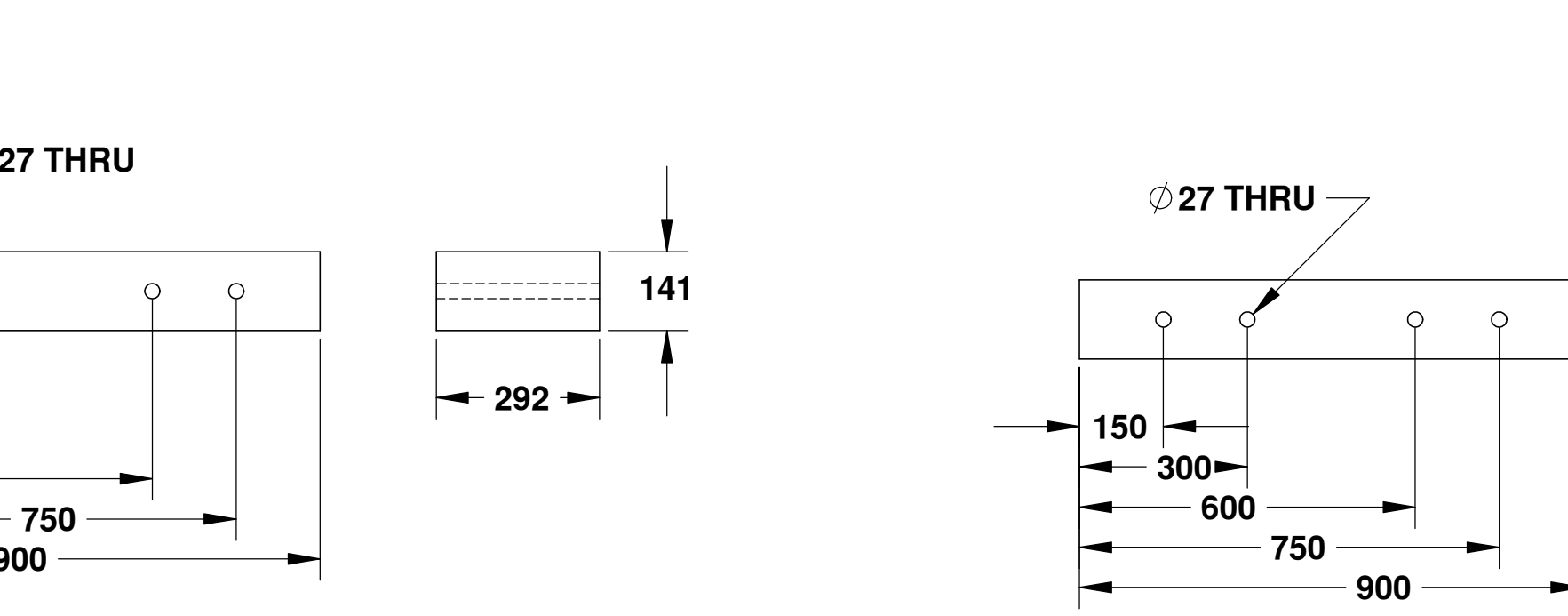
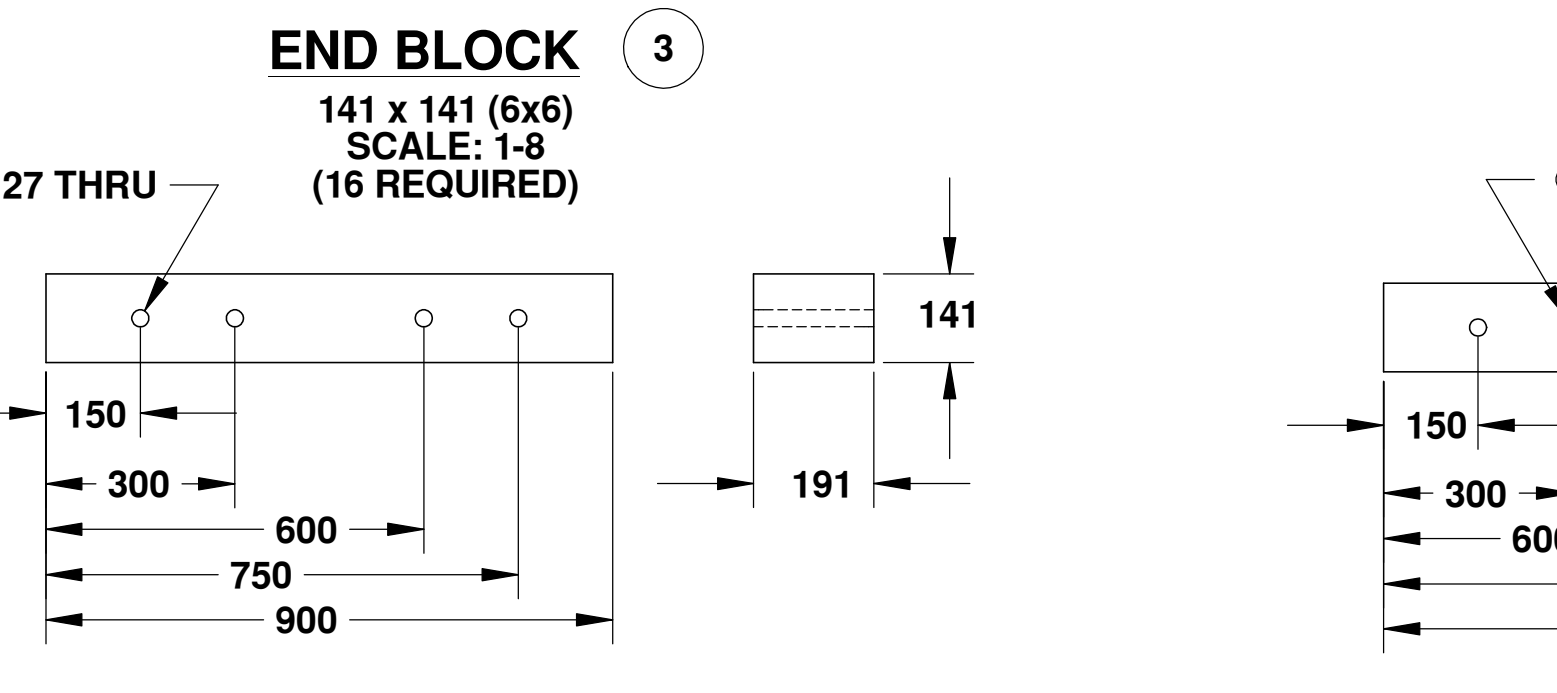
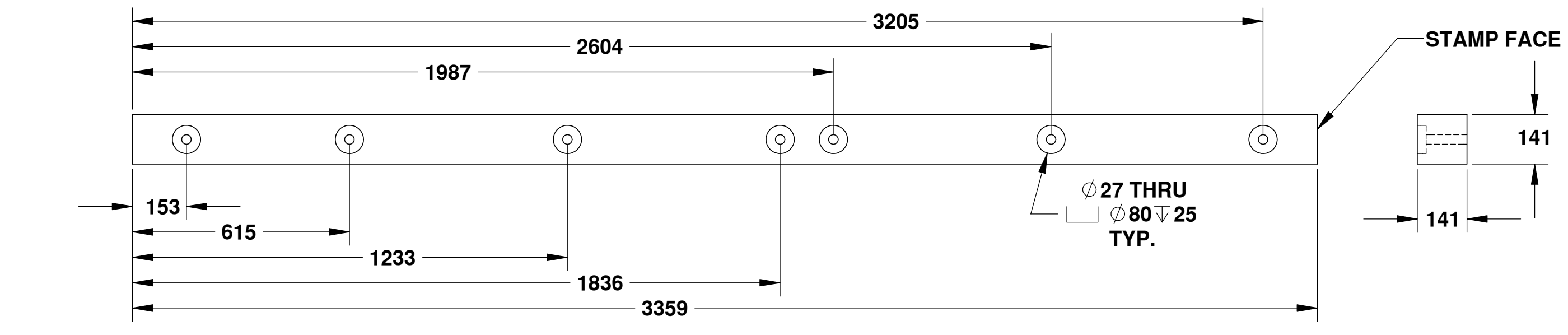
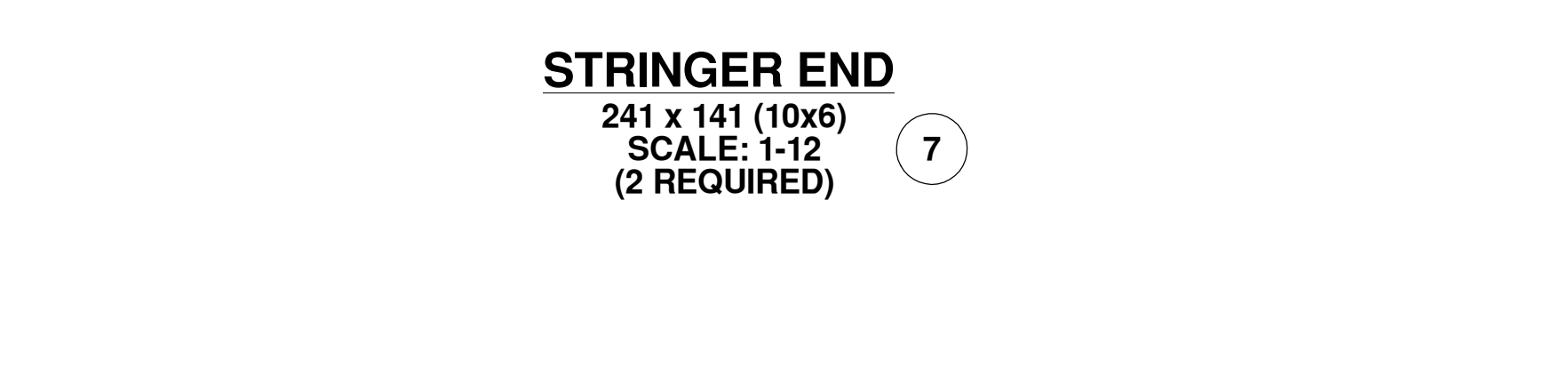
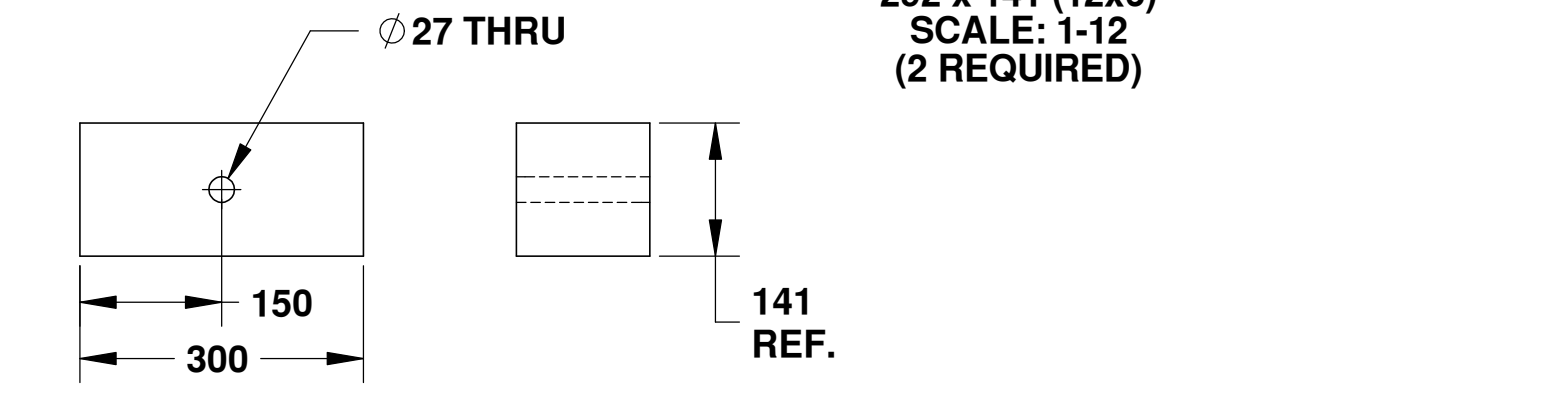
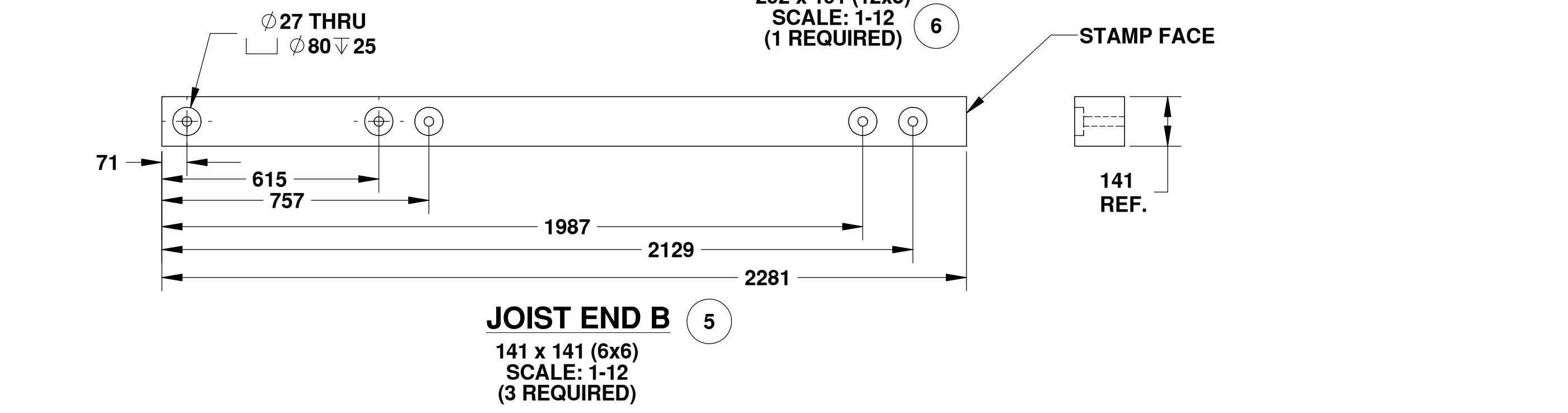
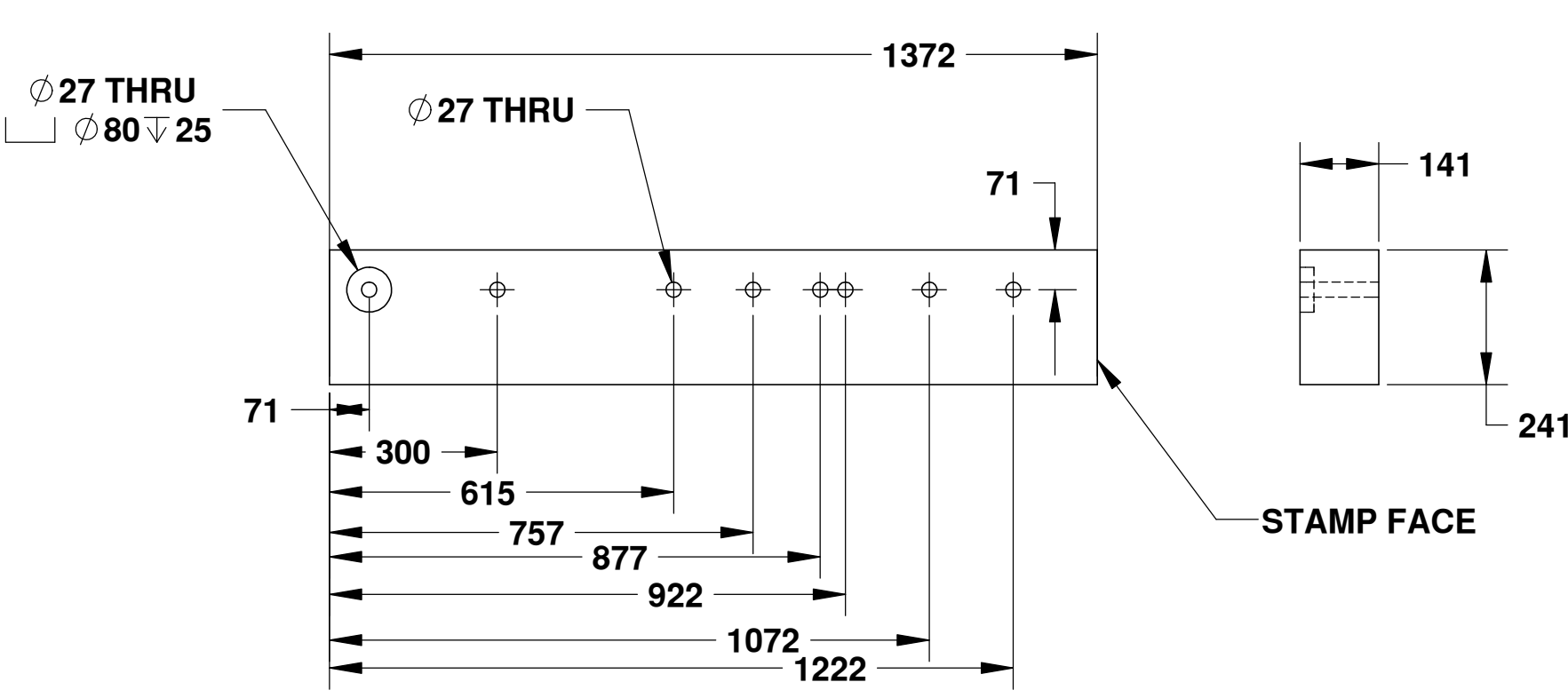
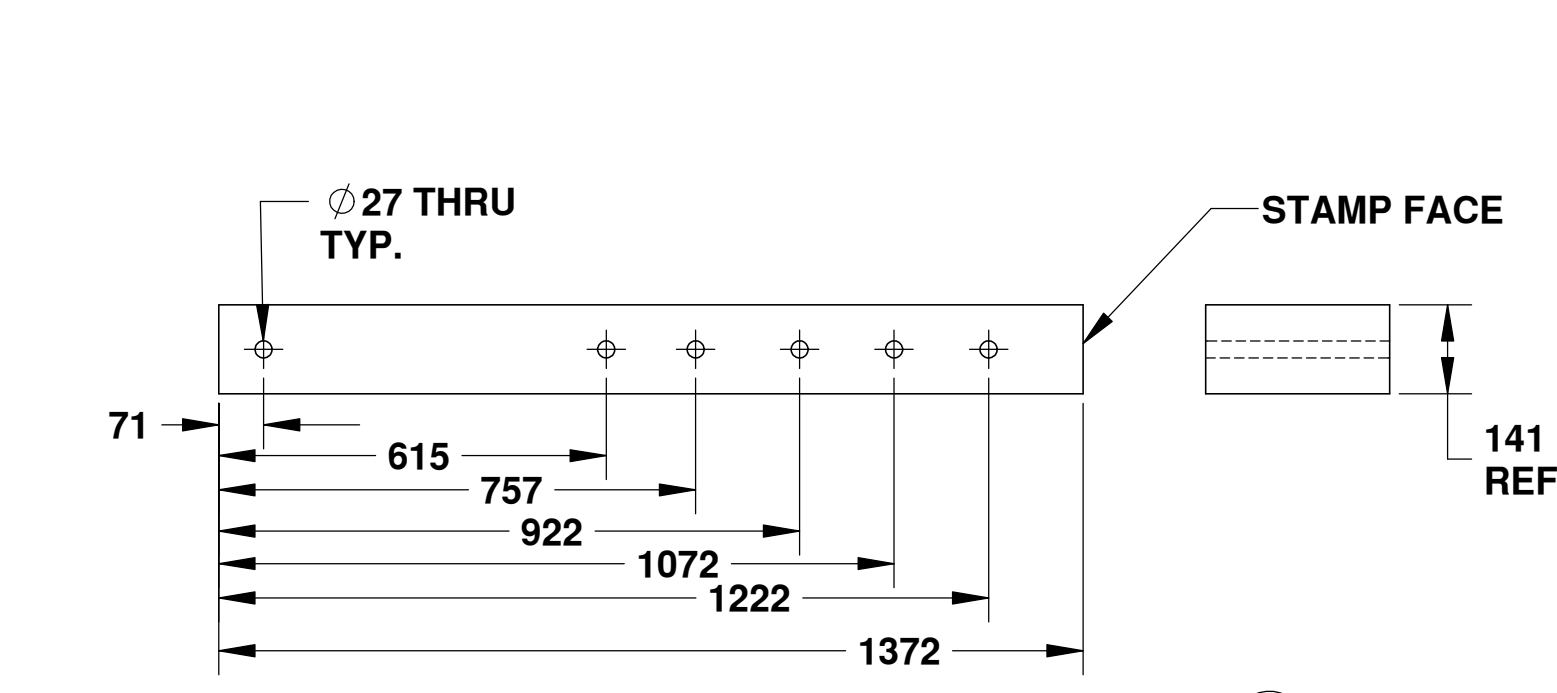
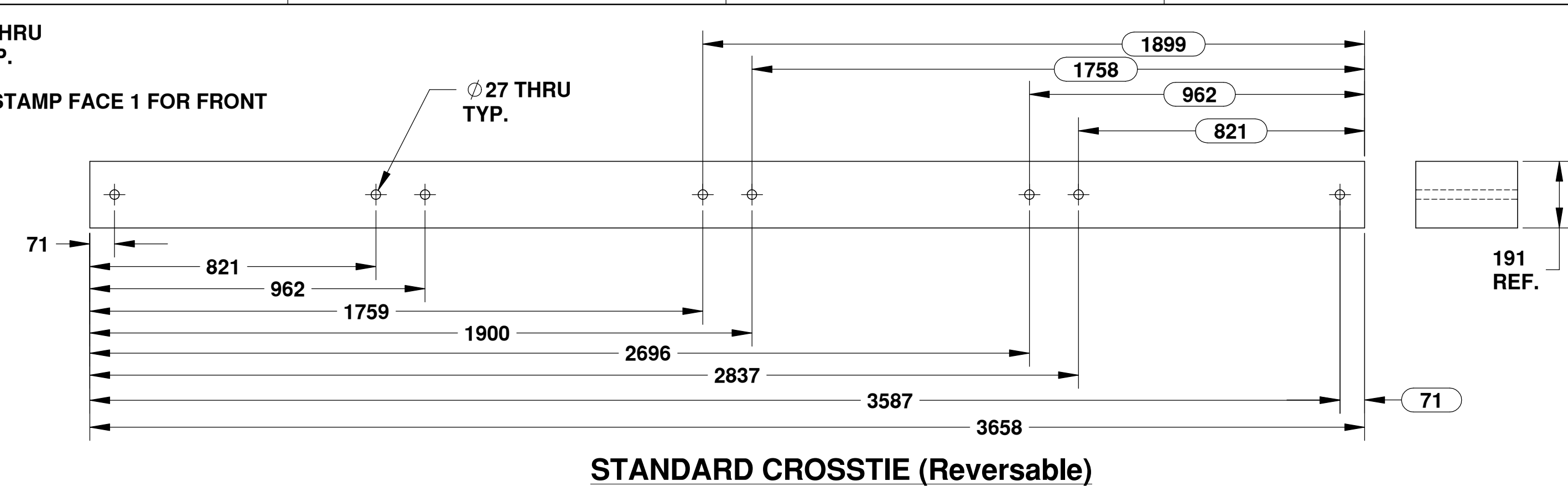
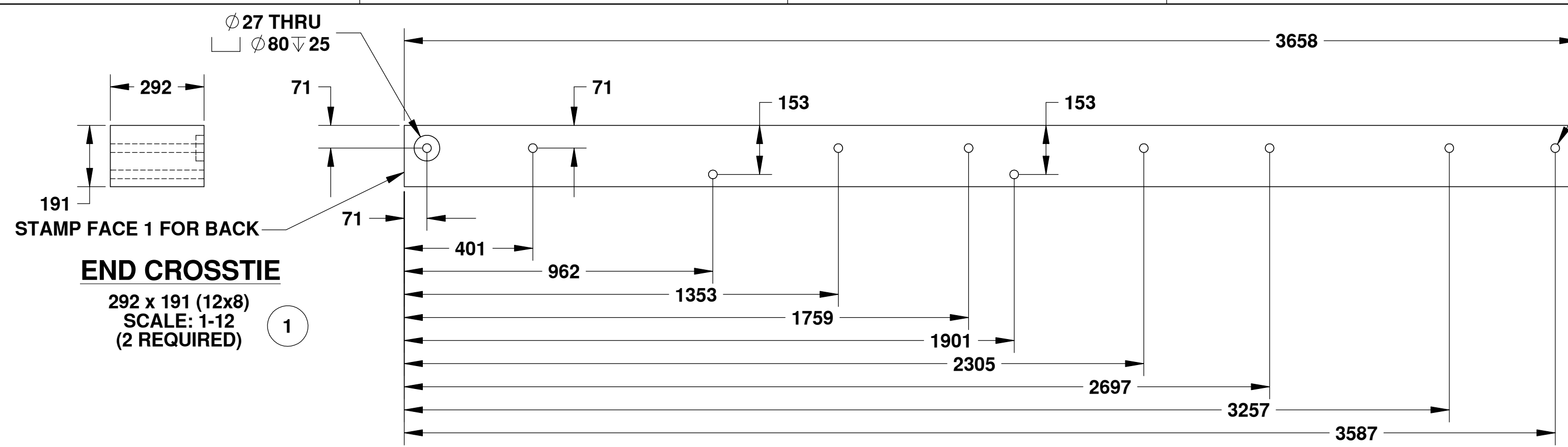
ITEM NO.	QTY	DESCRIPTION
17	7	HEX BOLT 25 X 406
18	13	HEX BOLT 25 x 457
19	2	HEX BOLT 25 X 610
20	8	HEX BOLT 25 x 711
21	4	HEX BOLT 25 X 762
22	4	HEX BOLT 25 X 914
23	84	WASHER 25mm DIA.
24	42	HEX NUT 25mm DIA.
25	4	HEX BOLT 25 x 965


**Fisheries & Oceans** / **Pêches et Océans**  
 Small Craft Harbours Branch

UNLESS OTHERWISE SPECIFIED:		DATE	NAME
DIMENSIONS ARE IN INCHES	DRAWN	12/11	WSL
TOLERANCES:	CHECKED		
FRACTIONAL: ±	ENG APPR.		
ANGULAR: MATCH BEND ±	MFG APPR.		
TWO PLACE DECIMAL: ±			
THREE PLACE DECIMAL: ±			
INTERPRET GEOMETRIC TOLERANCING PER:	Q.A.		
MATERIAL:	COMMENTS:		
FINISH:			
APPLICATION	DO NOT SCALE DRAWING		

TITLE: **3.65m WIDE FLOAT MODULE 2011 REVISION**  
 SIZE: DWG. NO. **D FM12-HV-END-000** REV **I**  
 SCALE: 1:15 | WEIGHT: | SHEET 1 OF 1

PROPRIETARY AND CONFIDENTIAL  
 THE INFORMATION CONTAINED IN THIS DRAWING IS THE SOLE PROPERTY OF HER MAJESTY'S GOVERNMENT OF CANADA. ANY REPRODUCTION IN PART OR AS A WHOLE WITHOUT THE WRITTEN PERMISSION OF HER MAJESTY'S GOVERNMENT OF CANADA IS PROHIBITED.



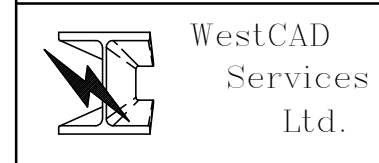
HOLES ARE TO BE DRILLED CENTER LINE UNLESS OTHERWISE NOTED



Small Craft Harbours Branch

UNLESS OTHERWISE SPECIFIED:		DATE	NAME
DIMENSIONS ARE IN INCHES	TOLERANCES:	DRAWN	12/11
FRACTIONAL: ±	ANGULAR: MACH 1 ±	CHECKED	
TWO PLACE DECIMAL: ±	MFG APPR.	ENG APPR.	
THREE PLACE DECIMAL: ±		MFG APPR.	
INTERPRET GEOMETRIC TOLERANCING PER:		G.A.	
MATERIAL:		COMMENTS:	
FINISH:			
NEXT ASSY:	USED ON:		
APPLICATION:	DO NOT SCALE DRAWING		

TITLE: 2011 REVISION		REV
3.657m WIDE HEAVY		I
END MODULES ASSEMBLY		
SIZE DWG. NO.	SCALE: 1:12	WEIGHT:
D FM12-HV-END-001		SHEET 1 OF 1



PROPRIETARY AND CONFIDENTIAL THE INFORMATION CONTAINED IN THIS DRAWING IS THE SOLE PROPERTY OF HER MAJESTY'S GOVERNMENT OF CANADA. ANY REPRODUCTION IN PART OR AS A WHOLE WITHOUT THE WRITTEN PERMISSION OF HER MAJESTY'S GOVERNMENT OF CANADA IS PROHIBITED.