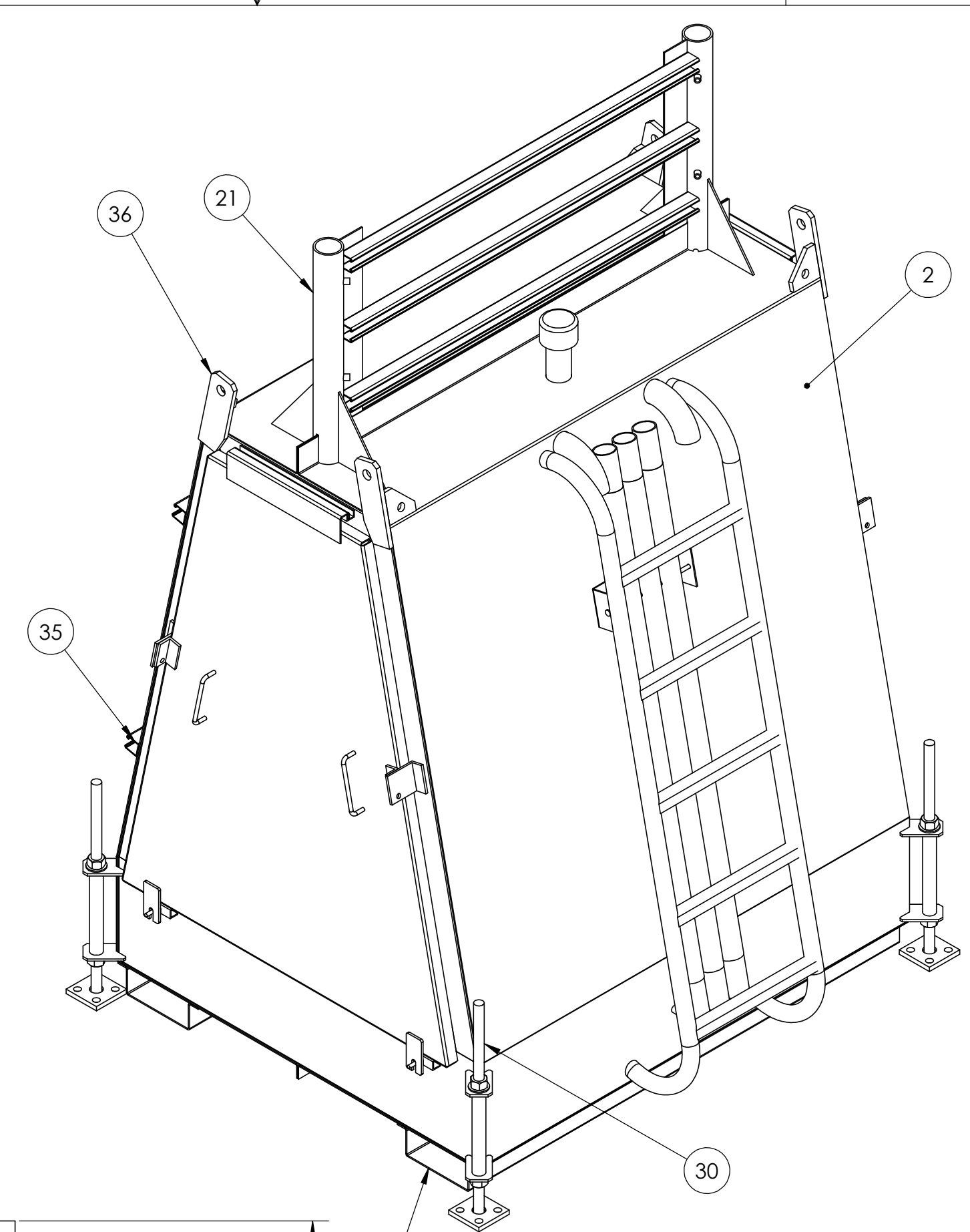
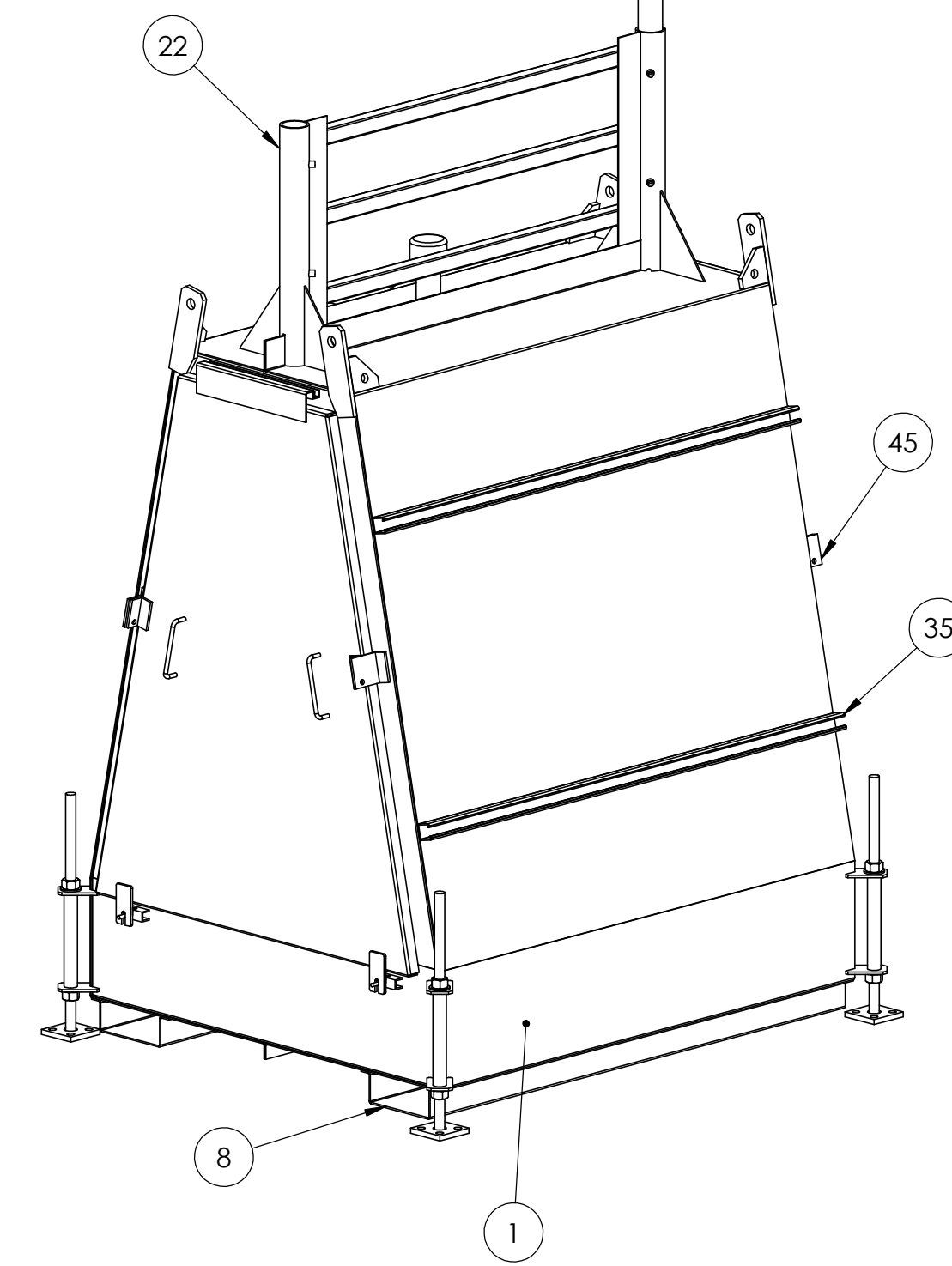


TOP VIEW

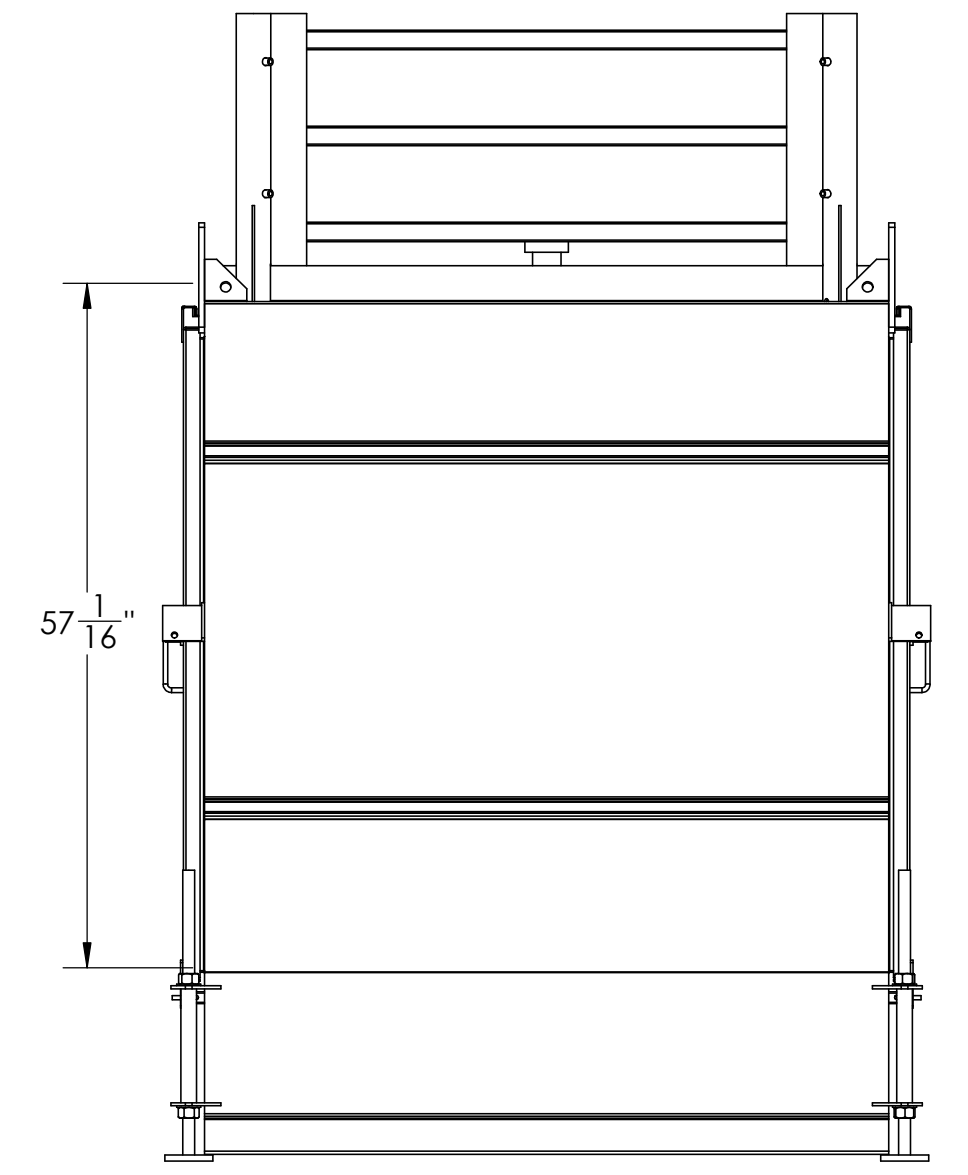


WITH PIPE MAST STORED

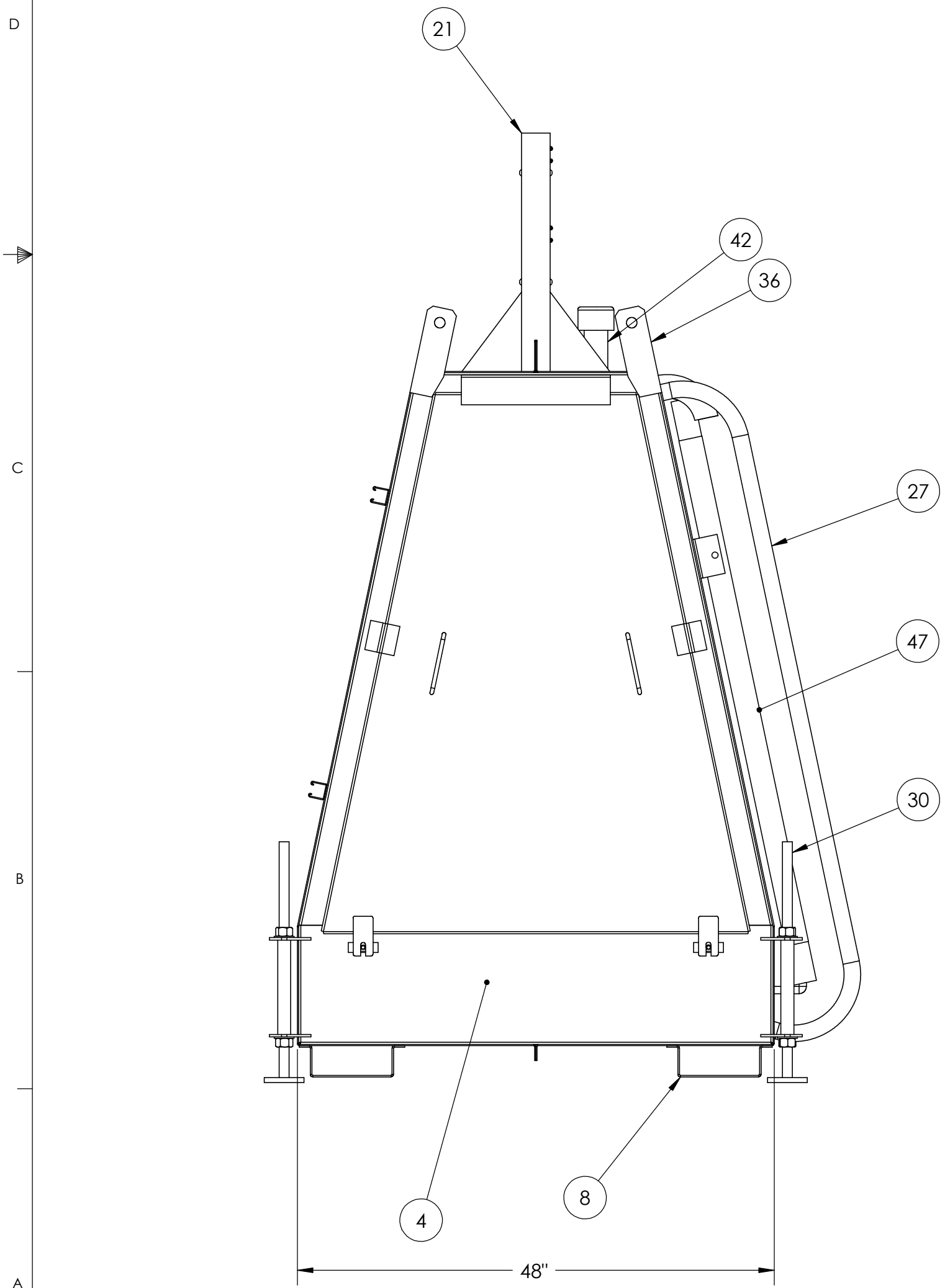


WITH PIPE MAST EXTENDED

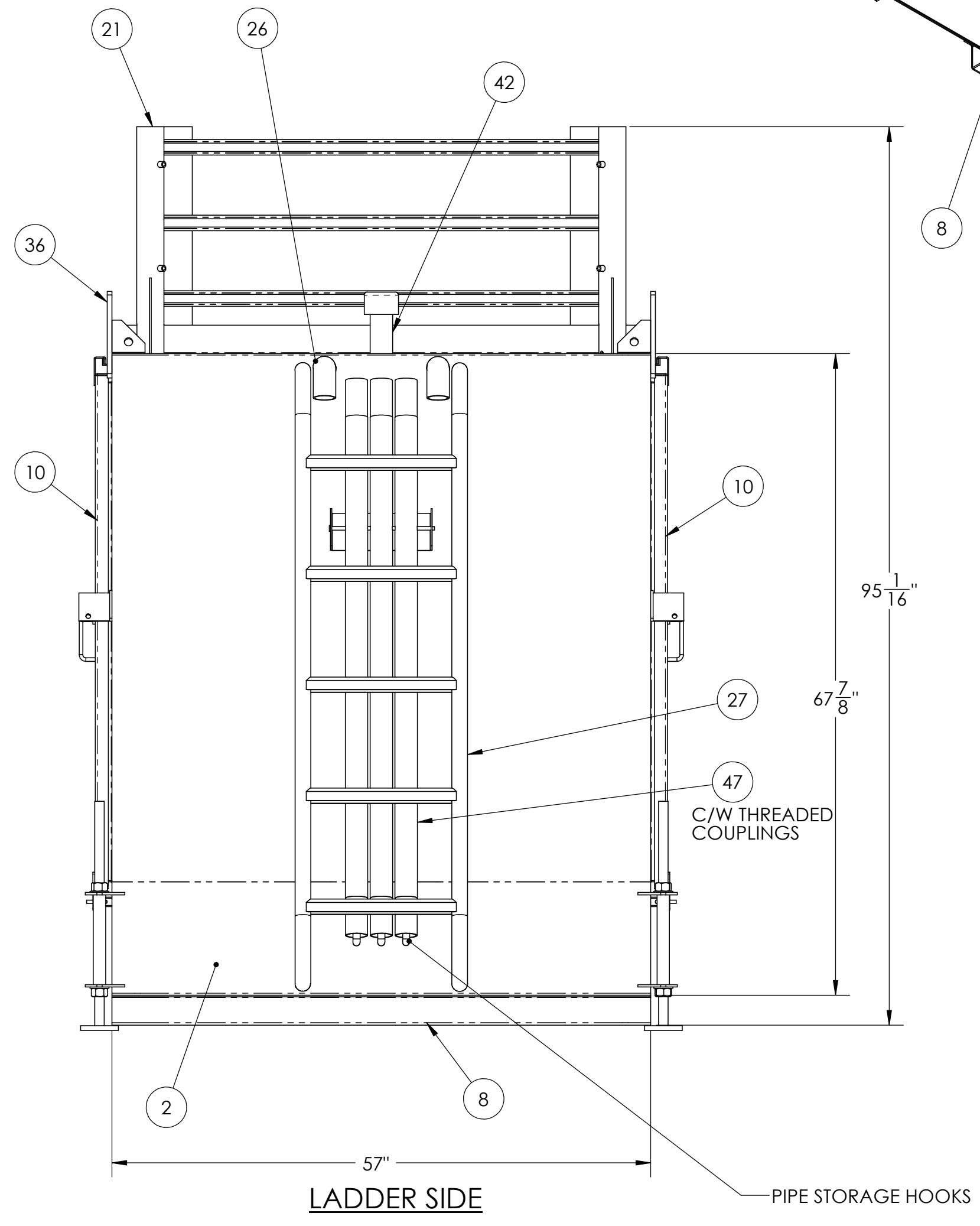
ITEM NO.	DESCRIPTION	QTY.
1	SHELL A	1
2	SHELL B	1
4	DOOR FRAME	2
8	FORKLIFT CHANNEL	2
10	DOOR PANEL	2
21	TOP MOUNTING ASSEMBLY	1
26	CABLE ELBOW	2
27	LADDER	1
30	CORNER LEVELER ASSEMBLY	4
35	ALUMINUM UNISTRUTS	2
36	LIFTING HOOKS	4
42	TOP CABLE ACCESS	1
47	EXTENSION PIPE	3



SOLAR PANEL SIDE



SIDE VIEW



LADDER SIDE

**GENERAL NOTES:**

**MATERIALS:**

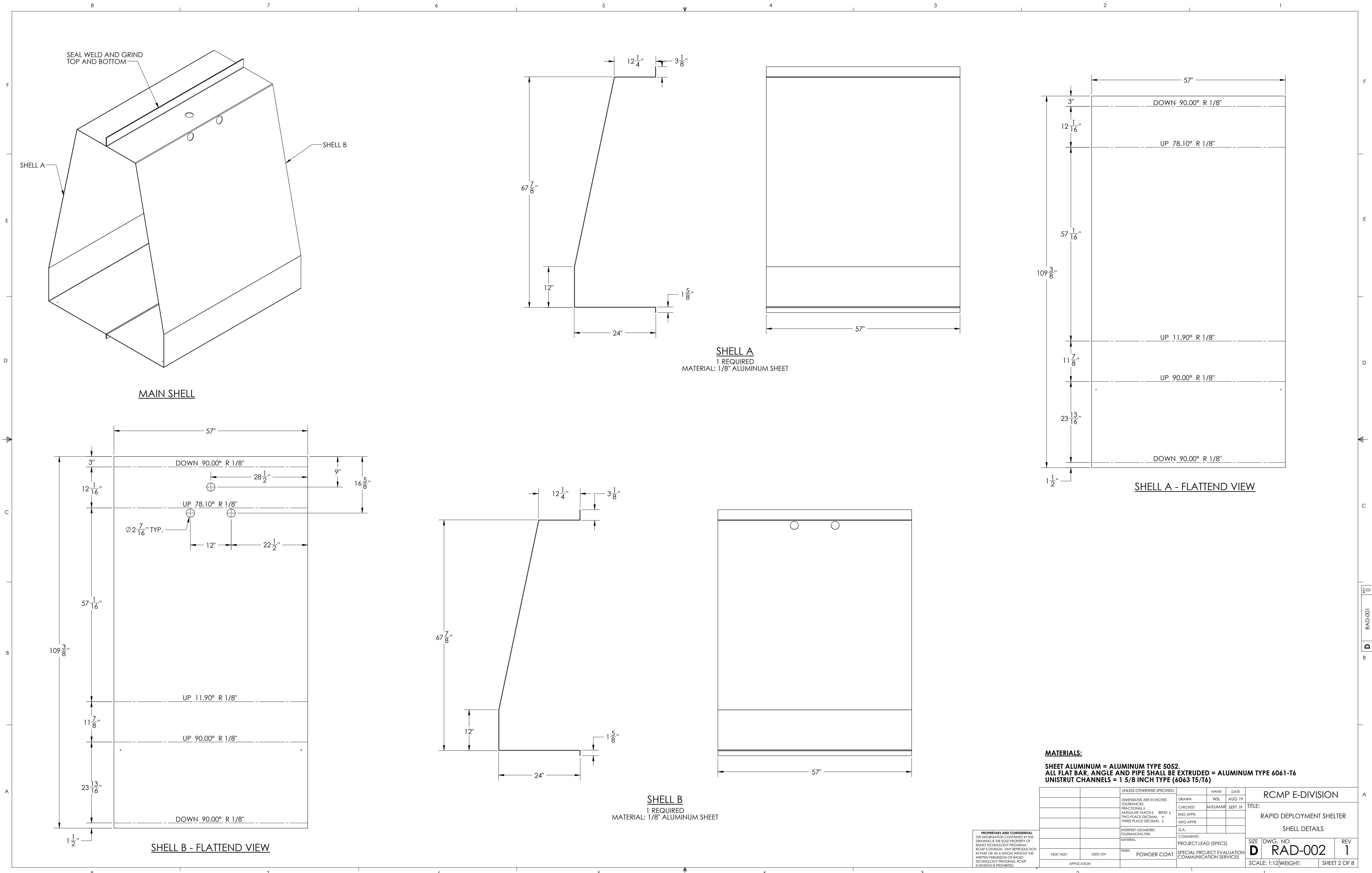
SHEET ALUMINUM = ALUMINUM TYPE 5052.  
 ALL FLAT BAR, ANGLE AND PIPE SHALL BE EXTRUDED = ALUMINUM TYPE 6061-T6  
 UNISTRUT CHANNELS = 1 5/8 INCH TYPE (6063 T5/T6)

WELDING STANDARD: CANADIAN WELDING BUREAU FUSION WELDING  
 CERTIFICATION CAS STANDARD W47.2

POWDER COATED - EXTERIOR FOREST GREEN, INTERIOR - WHITE

UNLESS OTHERWISE SPECIFIED:		NAME	DATE
DRAWN	WSL	AUG 19	
CHECKED	MUKUMAR	SEPT 19	
ENG APPR.			
MFG APPR.			
DIMENSIONS ARE IN INCHES			
TOLERANCES:			
FRACTIONAL ±			
ANGULAR: MATCH ± BEND ±			
TWO PLACE DECIMAL ±			
THREE PLACE DECIMAL ±			
INTERPRET GEOMETRIC TOLERANCING PER:			
MATERIAL:			
FINISH:		POWDER COAT	
NEXT ASSY:		USED ON:	
APPLICATION:			
PROJECT LEAD (SPECS)			
SPECIAL PROJECT EVALUATION/COMMUNICATION SERVICES			
RCMP E-DIVISION		TITLE:	
Rapid Deployment Shelter		GENERAL ASSEMBLY	
SIZE	IDWG. NO.	REV	
D	RAD-002	1	
SCALE: 1:12/WEIGHT:		SHEET 1 OF 8	

PROPRIETARY AND CONFIDENTIAL  
 THE INFORMATION CONTAINED IN THIS DRAWING IS THE SOLE PROPERTY OF  
 RADIO TECHNOLOGY PROGRAM,  
 RCMP E-DIVISION. ANY REPRODUCTION  
 IN PART OR AS A WHOLE WITHOUT THE  
 WRITTEN PERMISSION OF RADIO  
 TECHNOLOGY PROGRAM, RCMP  
 E-DIVISION IS PROHIBITED.



SEAL WELD AND GRIND TOP AND BOTTOM

SHELL A

SHELL B

MAIN SHELL

SHELL A  
1 REQUIRED  
MATERIAL: 1/8" ALUMINUM SHEET

SHELL B  
1 REQUIRED  
MATERIAL: 1/8" ALUMINUM SHEET

SHELL B - FLATTEND VIEW

SHELL A - FLATTEND VIEW

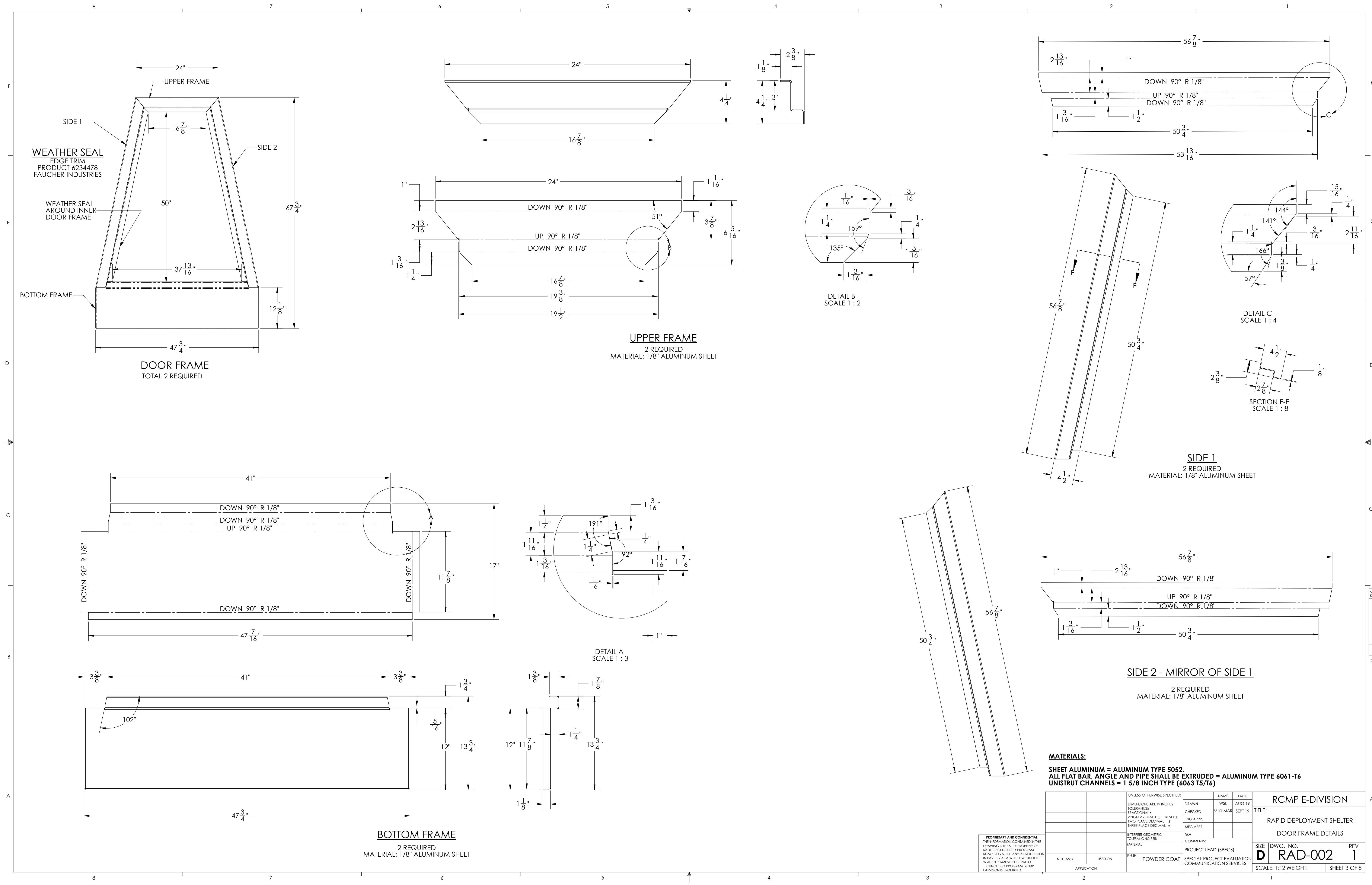
**MATERIALS:**  
SHEET ALUMINUM = ALUMINUM TYPE 5052.  
ALL FLAT BAR, ANGLE AND PIPE SHALL BE EXTRUDED = ALUMINUM TYPE 6061-T6  
UNISTRUT CHANNELS = 1 5/8 INCH TYPE (6063 T5/T6)

PROPRIETARY AND CONFIDENTIAL  
THE INFORMATION CONTAINED IN THIS DRAWING IS THE SOLE PROPERTY OF RADIO TECHNOLOGY PROGRAM, RCMP E-DIVISION. ANY REPRODUCTION IN PART OR AS A WHOLE WITHOUT THE WRITTEN PERMISSION OF RADIO TECHNOLOGY PROGRAM, RCMP E-DIVISION IS PROHIBITED.

UNLESS OTHERWISE SPECIFIED:		NAME	DATE
DIMENSIONS ARE IN INCHES	DRAWN	WSL	AUG 19
TOLERANCES	CHECKED	M.KUMAR	SEPT 19
FRACTIONAL ±	ENG APPR.		
ANGULAR: MATCH ±	WFG APPR.		
TWO PLACE DECIMAL ±	Q.A.		
THREE PLACE DECIMAL ±	INTERPRET GEOMETRIC TOLERANCING PER:		
	MATERIAL:		
	FRST	POWDER COAT	
	USED ON		
	APPLICATION:		

RCMP E-DIVISION	
TITLE:	
RAPID DEPLOYMENT SHELTER	
SHELL DETAILS	
SIZE DWG. NO.	REV
D RAD-002	1
SCALE: 1:12	WEIGHT:
SHEET 2 OF 8	



**WEATHER SEAL**  
EDGE TRIM  
PRODUCT 6234478  
FAUCHER INDUSTRIES

WEATHER SEAL  
AROUND INNER  
DOOR FRAME

**DOOR FRAME**  
TOTAL 2 REQUIRED

**UPPER FRAME**  
2 REQUIRED  
MATERIAL: 1/8" ALUMINUM SHEET

**SIDE 1**  
2 REQUIRED  
MATERIAL: 1/8" ALUMINUM SHEET

**SIDE 2 - MIRROR OF SIDE 1**  
2 REQUIRED  
MATERIAL: 1/8" ALUMINUM SHEET

**BOTTOM FRAME**  
2 REQUIRED  
MATERIAL: 1/8" ALUMINUM SHEET

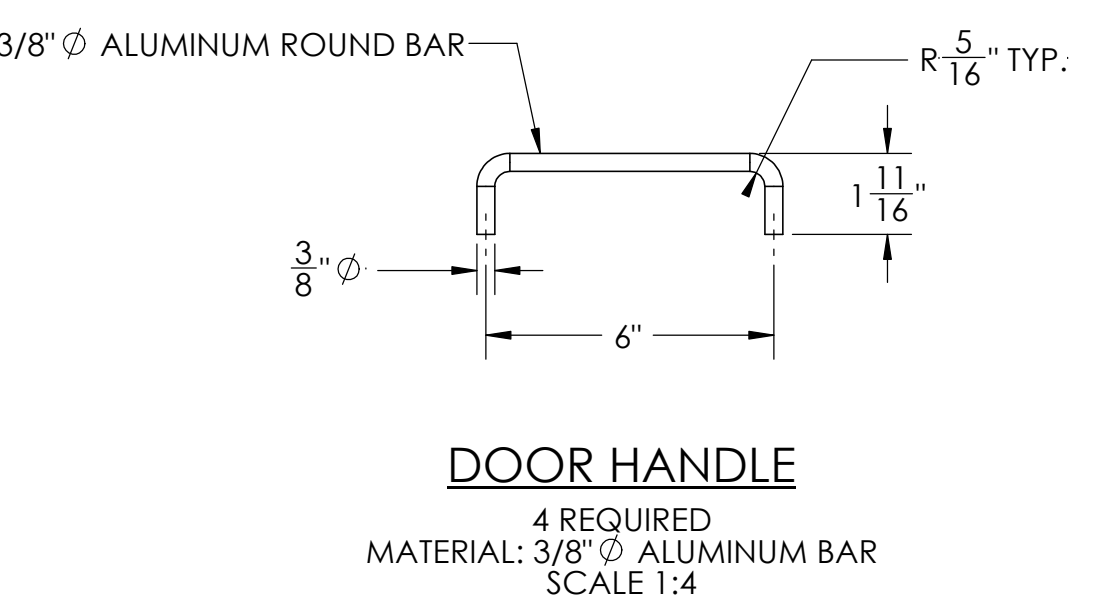
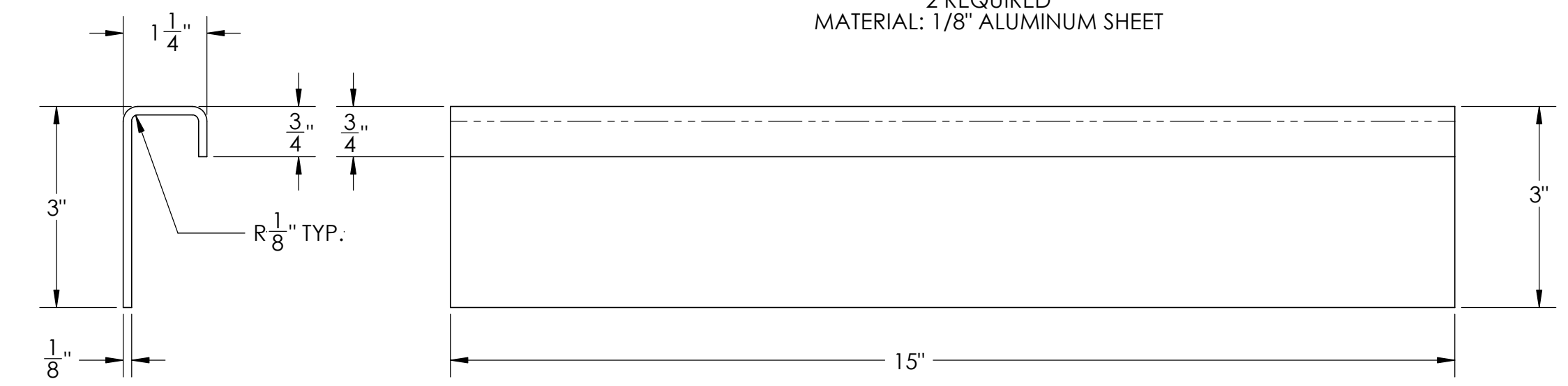
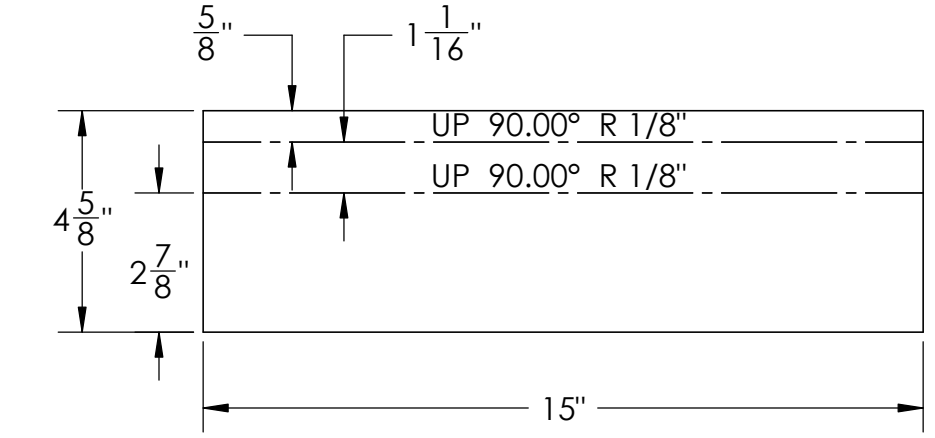
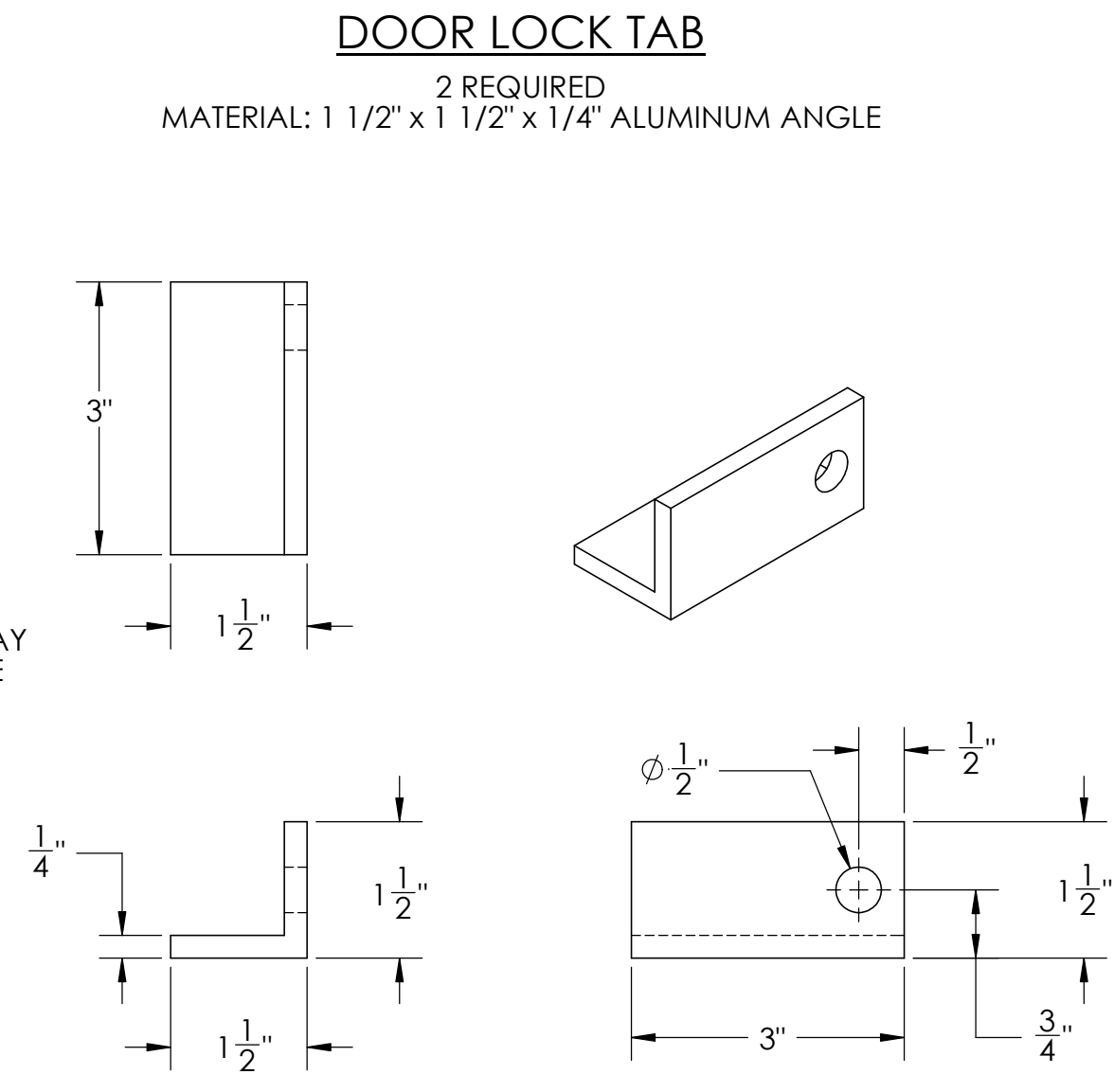
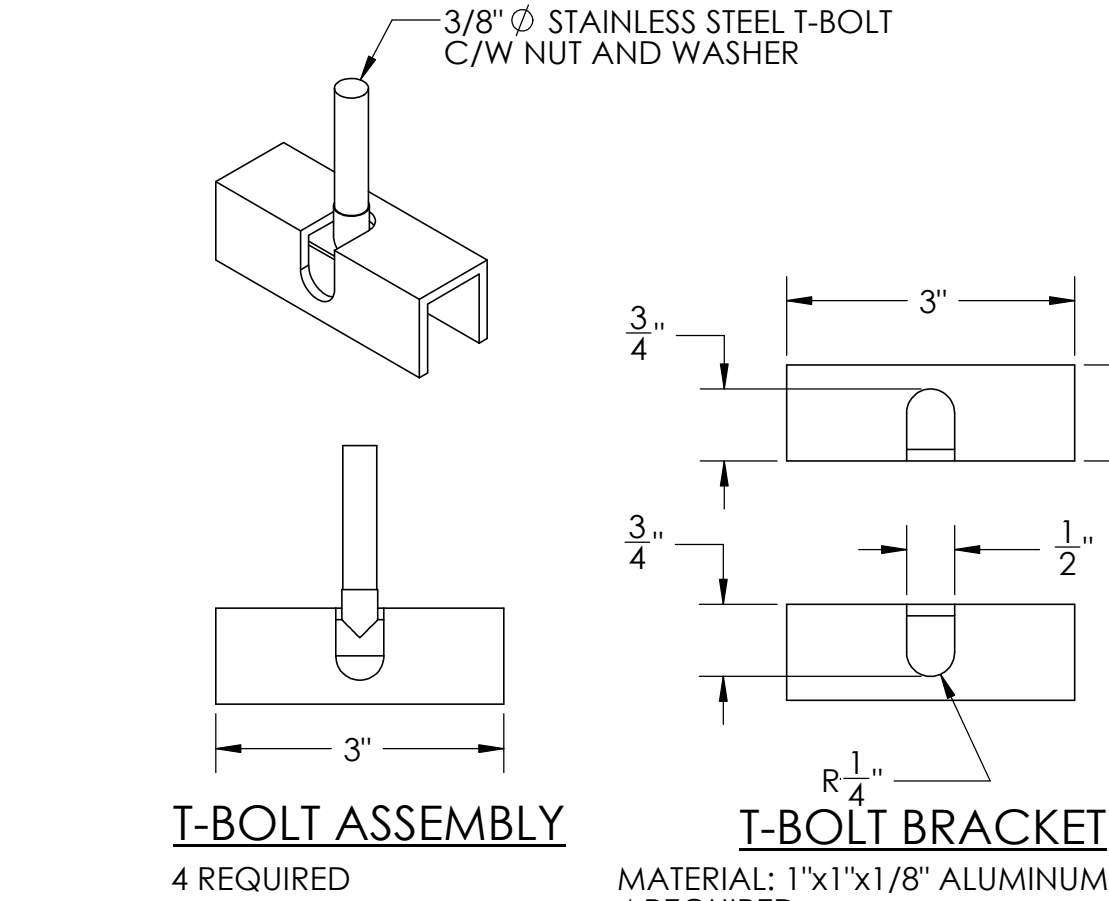
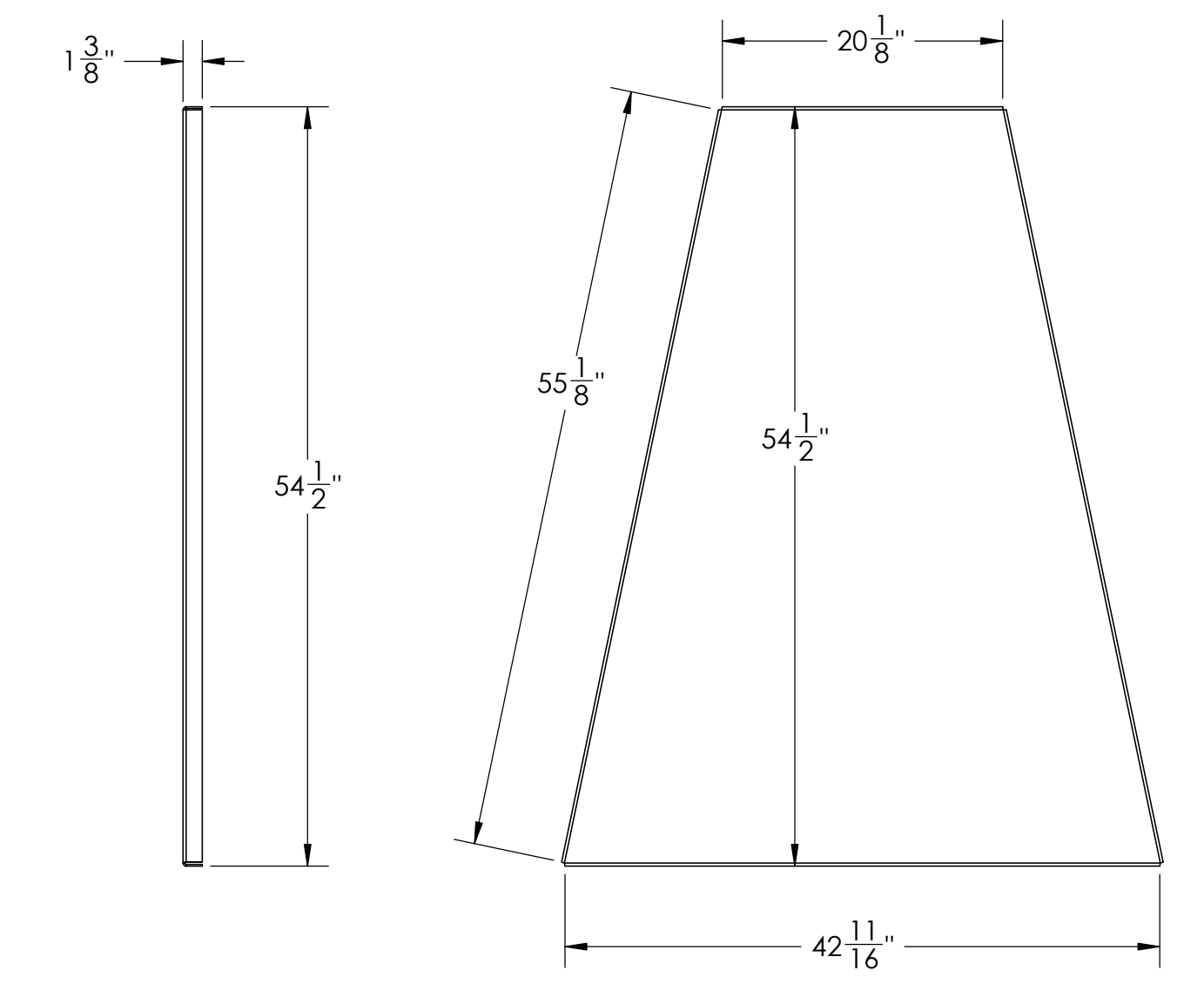
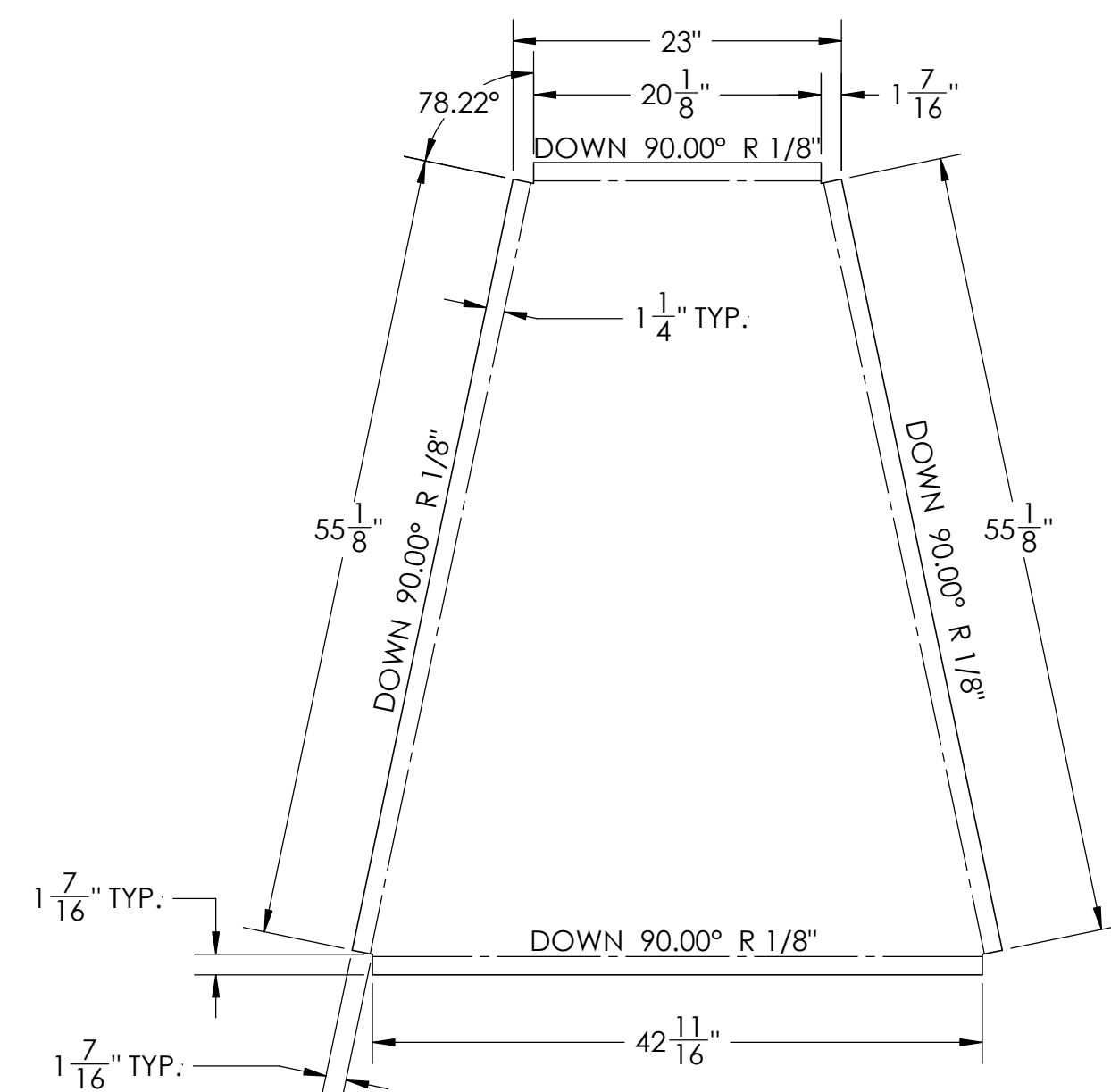
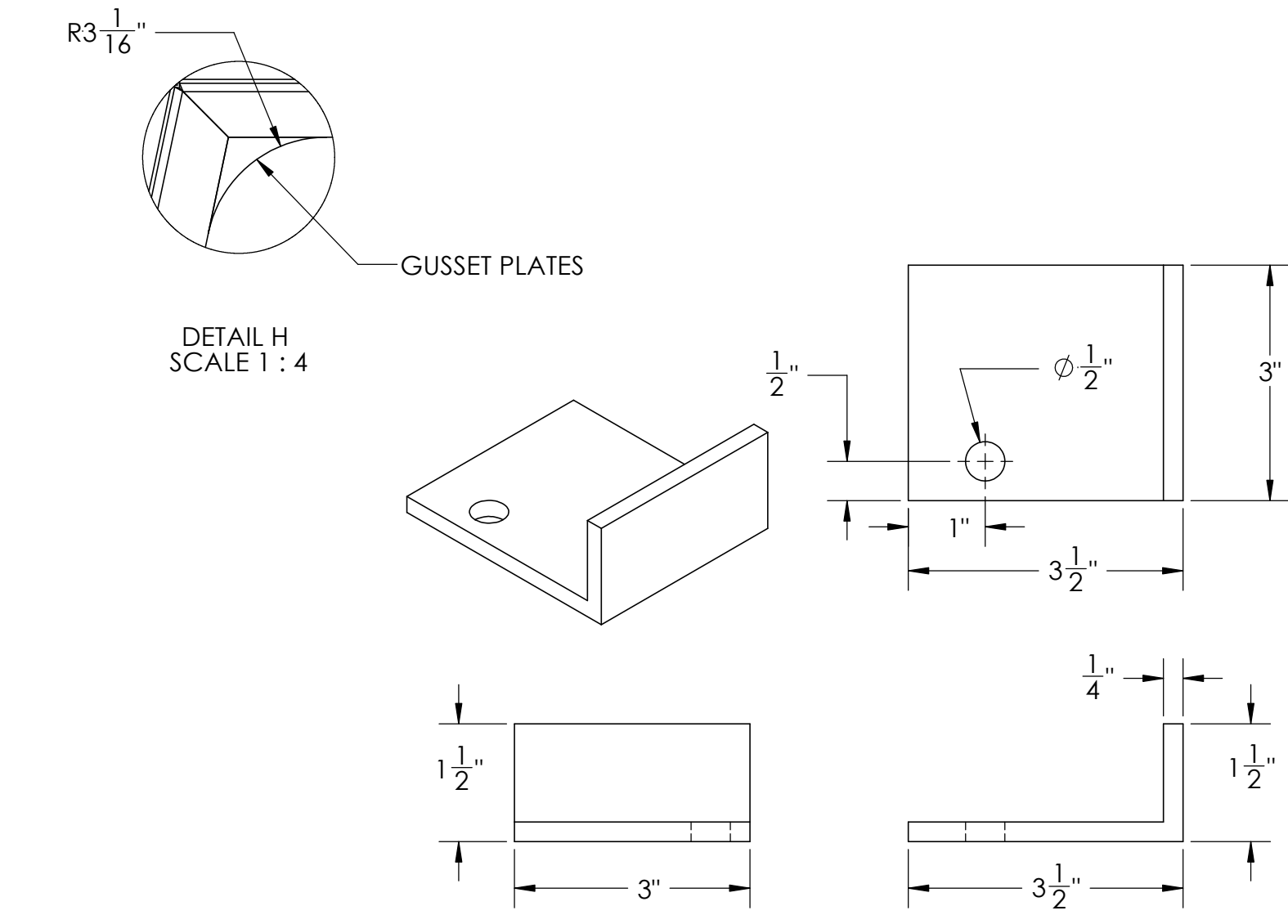
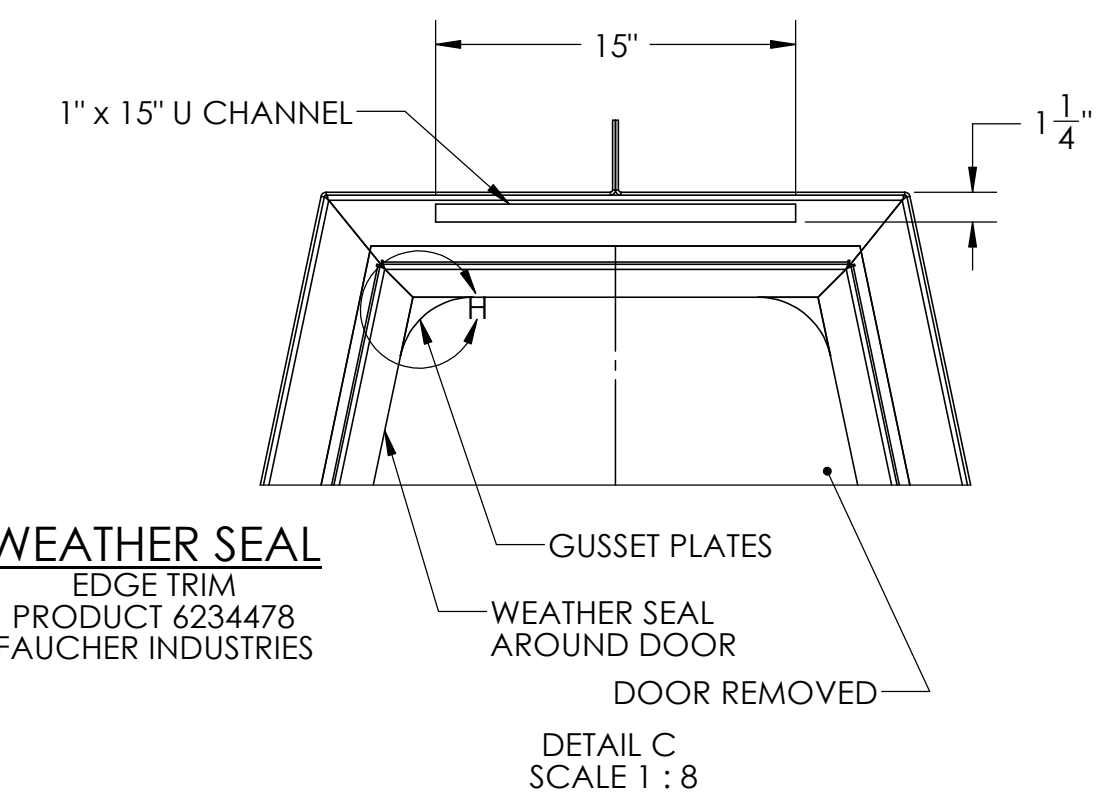
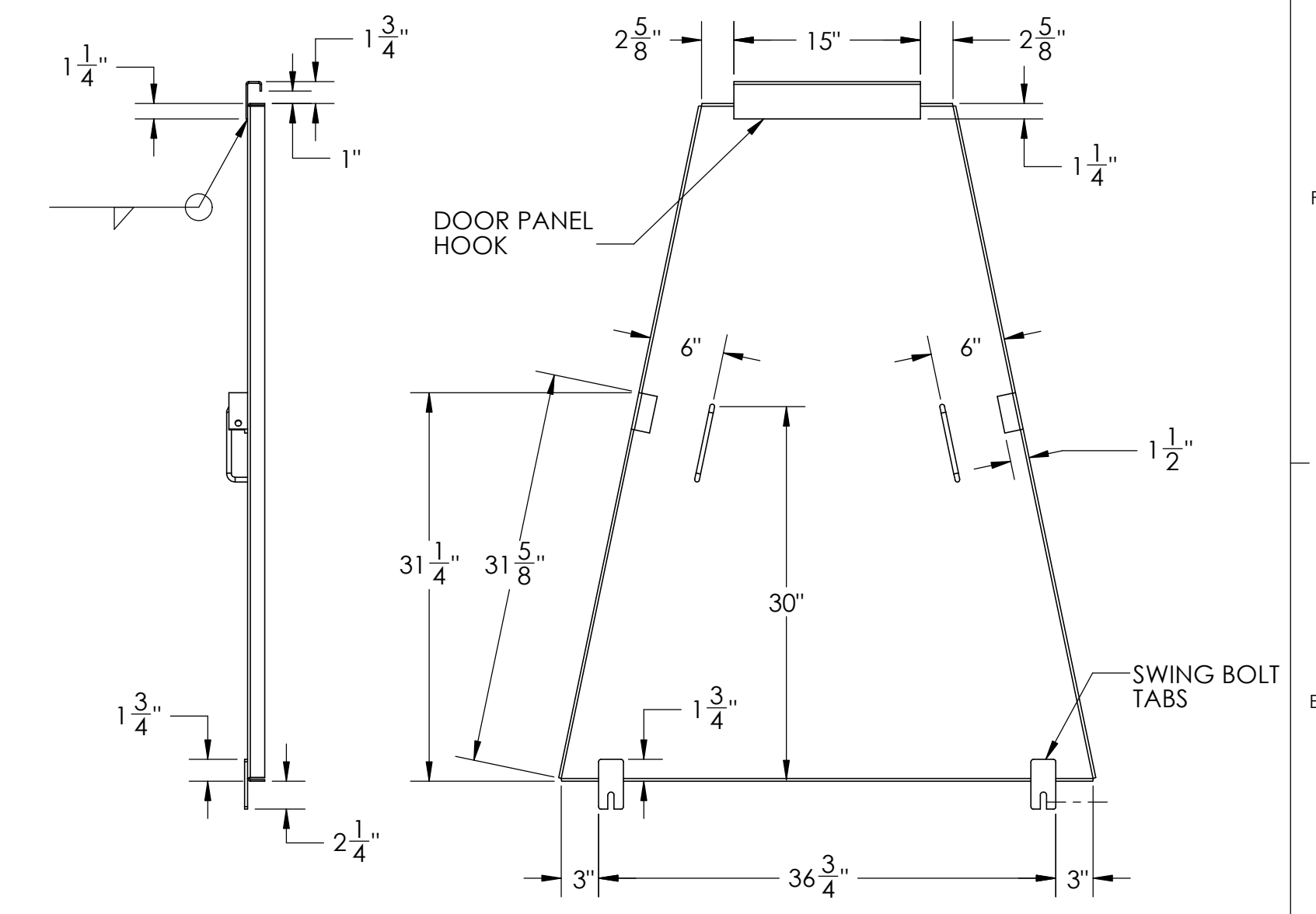
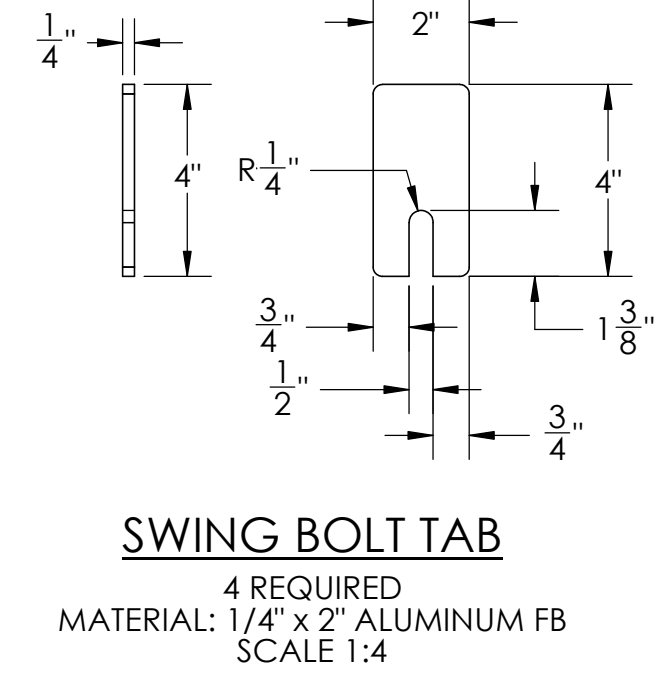
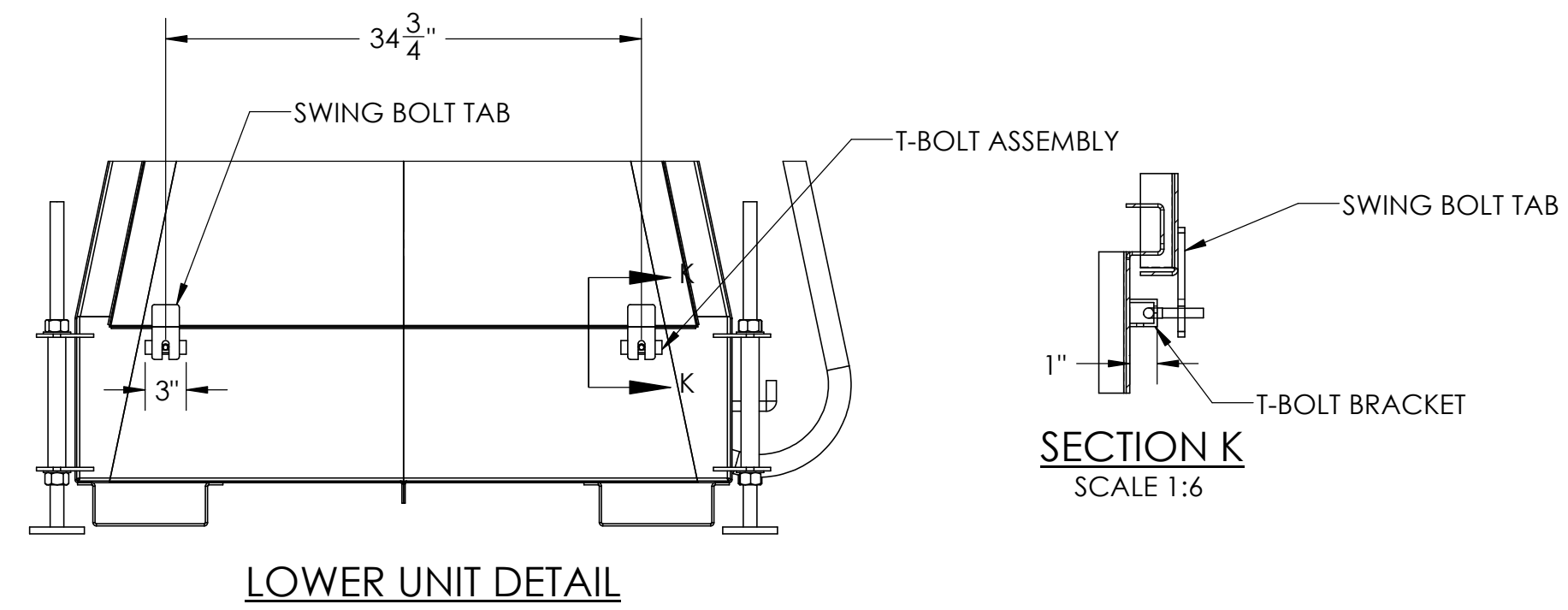
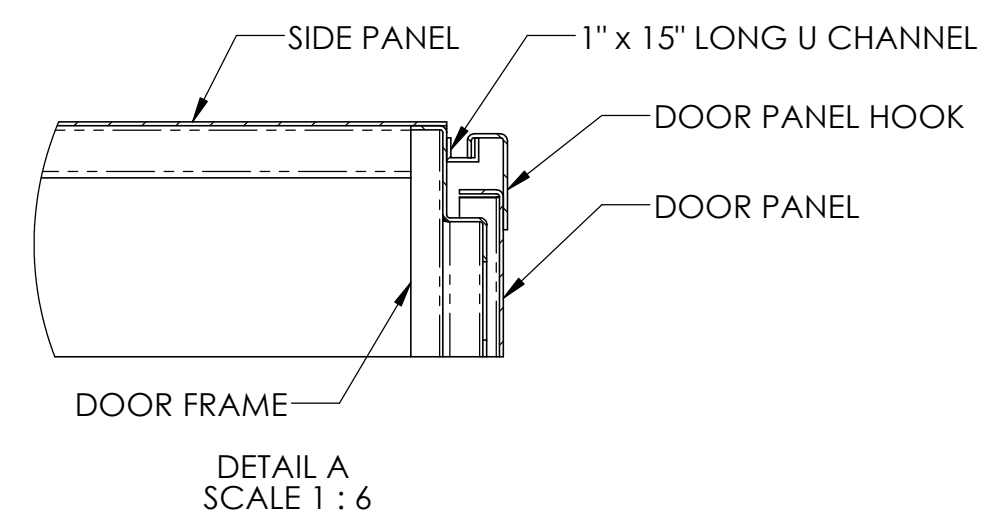
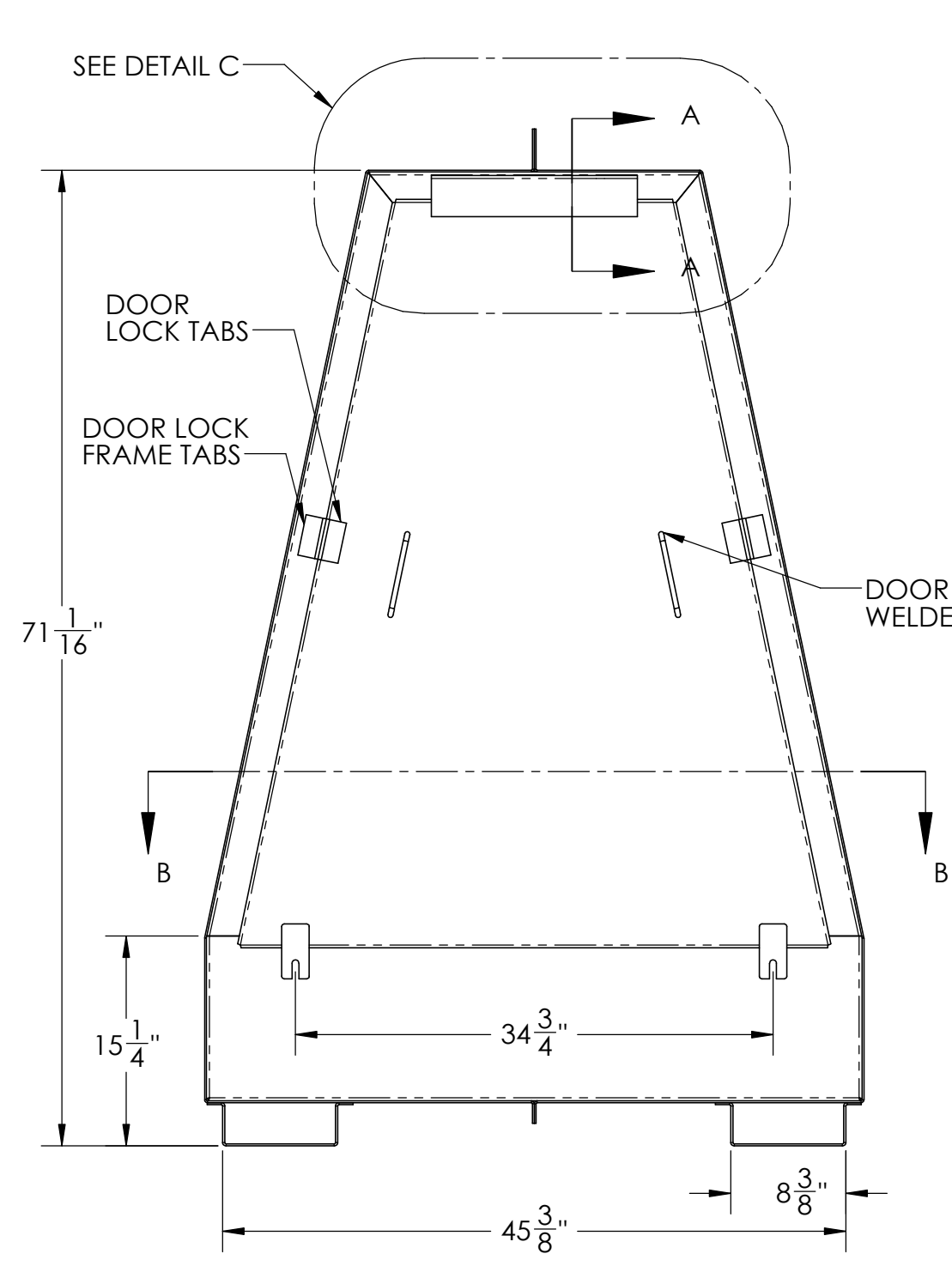
**MATERIALS:**  
SHEET ALUMINUM = ALUMINUM TYPE 5052.  
ALL FLAT BAR, ANGLE AND PIPE SHALL BE EXTRUDED = ALUMINUM TYPE 6061-T6  
UNISTRUT CHANNELS = 1 5/8 INCH TYPE (6063 T5/T6)

UNLESS OTHERWISE SPECIFIED:		NAME	DATE	RCMP E-DIVISION
DIMENSIONS ARE IN INCHES		WSL	AUG 19	
TOLERANCES:		CHECKED	SEPT 19	TITLE: RAPID DEPLOYMENT SHELTER DOOR FRAME DETAILS
FRACTIONAL ±		ENG APPR.		
ANGULAR MATCH ± BEND ±		MFG APPR.		
TWO PLACE DECIMAL ±		G.A.		COMMENTS: PROJECT LEAD (SPECS)
THREE PLACE DECIMAL ±				
INTERPRET GEOMETRIC TOLERANCING PER:	MATERIAL:	FINISH:	POWDER COAT	SPECIAL PROJECT EVALUATION COMMUNICATION SERVICES
NEXT ASSY	USED ON	APPLICATION		SCALE: 1:12/WEIGHT:

**PROPRIETARY AND CONFIDENTIAL**  
THE INFORMATION CONTAINED IN THIS DRAWING IS THE SOLE PROPERTY OF RADIO TECHNOLOGY PROGRAM, RCMP E-DIVISION. ANY REPRODUCTION IN PART OR AS A WHOLE WITHOUT THE WRITTEN PERMISSION OF RADIO TECHNOLOGY PROGRAM, RCMP E-DIVISION IS PROHIBITED.

D RAD-001

SIZE DWG. NO. REV  
**D** RAD-002 1  
SHEET 3 OF 8



**MATERIALS:**

SHEET ALUMINUM = ALUMINUM TYPE 5052.

ALL FLAT BAR, ANGLE AND PIPE SHALL BE EXTRUDED = ALUMINUM TYPE 6061-T6

UNISTRUT CHANNELS = 1 5/8 INCH TYPE (6063 T5/T6)

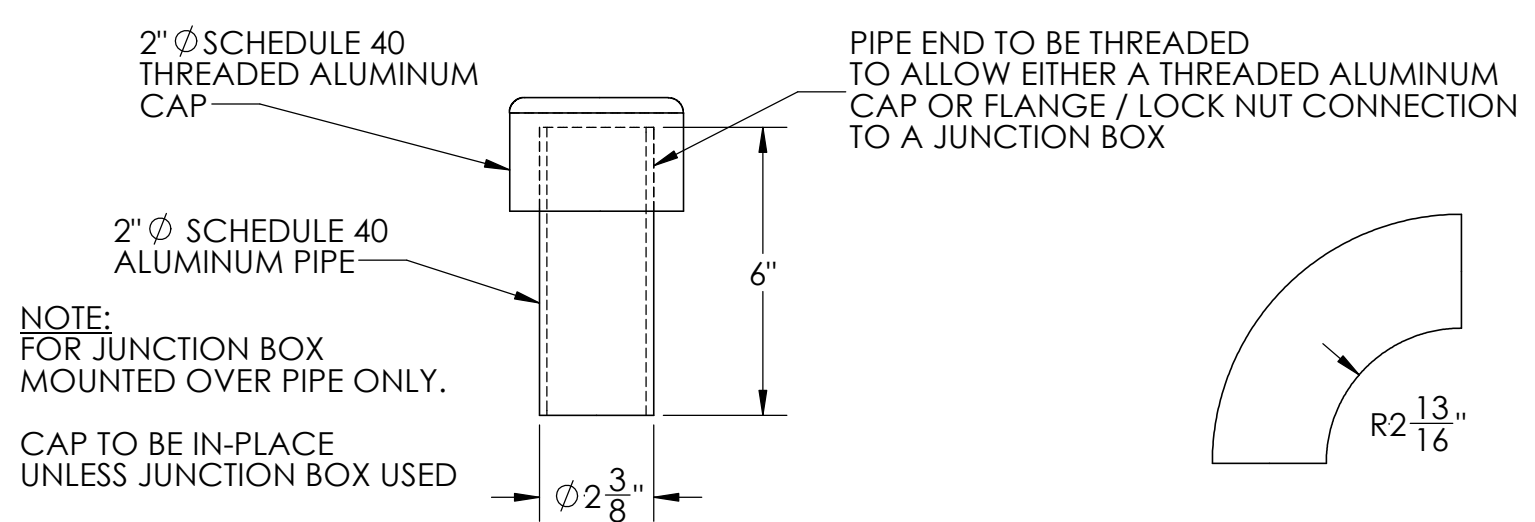
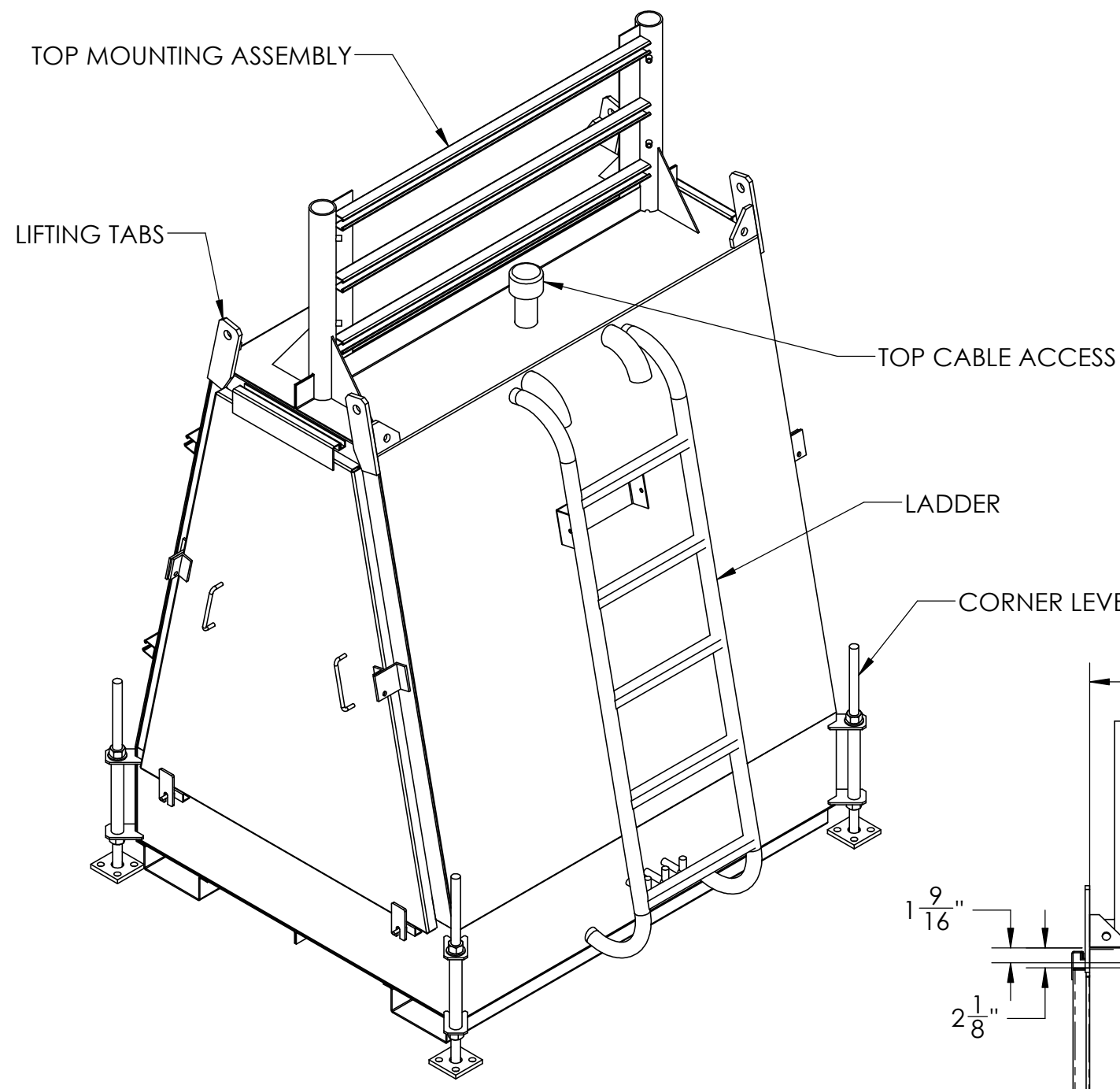
UNLESS OTHERWISE SPECIFIED:	NAME	DATE	RCMP E-DIVISION
DIMENSIONS ARE IN INCHES	WSL	AUG 19	TITLE:
TOLERANCES:	CHECKED	MUKUMAR	SEPT 19
FRACTIONALS: 1/8, 1/4, 3/8, 1/2, 5/8, 3/4, 7/8	ENG APPR.		
DECIMALS: 1/16, 1/32, 1/64	MFG APPR.		
ANGLES: MATCH 1	G.A.		
BENDS: 1	COMMENTS:		
THREE PLACE DECIMAL: 2	PROJECT LEAD (SPECS)		
INTERPRET GEOMETRIC DIMENSIONS PER:	SPECIAL PROJECT EVALUATION		
MATERIAL:	COMMUNICATION SERVICES		
PROPRIETARY AND CONFIDENTIAL	APPLICATION		
THE INFORMATION CONTAINED IN THIS DRAWING IS THE SOLE PROPERTY OF RADIO TECHNOLOGY PROGRAM, RCMP E-DIVISION. ANY REPRODUCTION IN PART OR AS A WHOLE WITHOUT THE WRITTEN PERMISSION OF RADIO TECHNOLOGY PROGRAM, RCMP E-DIVISION IS PROHIBITED.	USED ON:	POWDER COAT	

SIZE DWG. NO. REV

D RAD-002 1

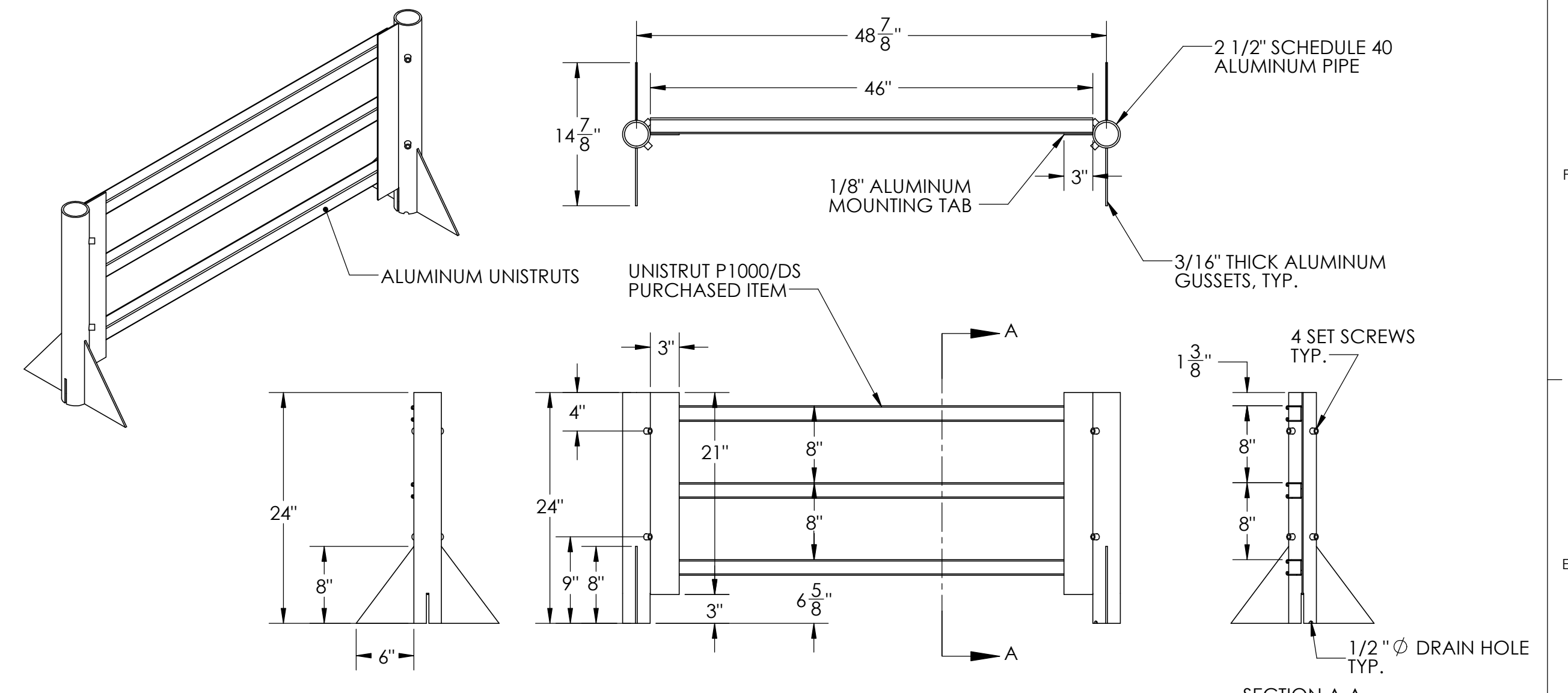
SCALE: 1:12 WEIGHT: SHEET 4 OF 8

10  
D  
RAD-001  
B

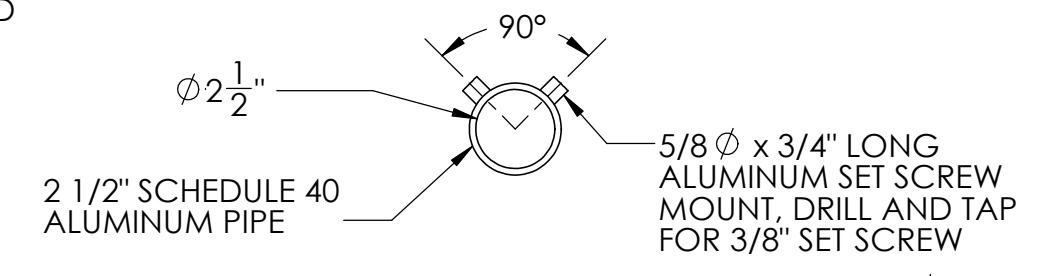


**TOP CABLE ACCESS**  
1 REQUIRED  
MATERIAL: 2"  $\phi$  SCH 40 ALUMINUM PIPE

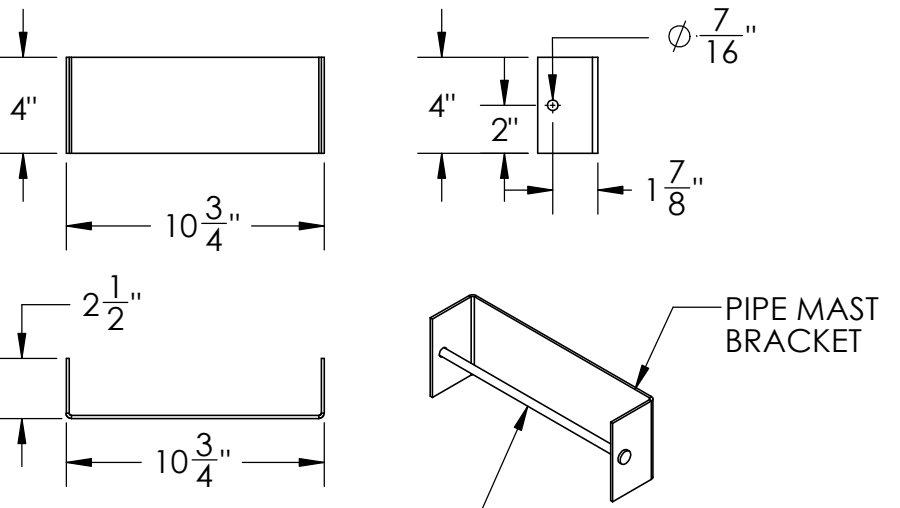
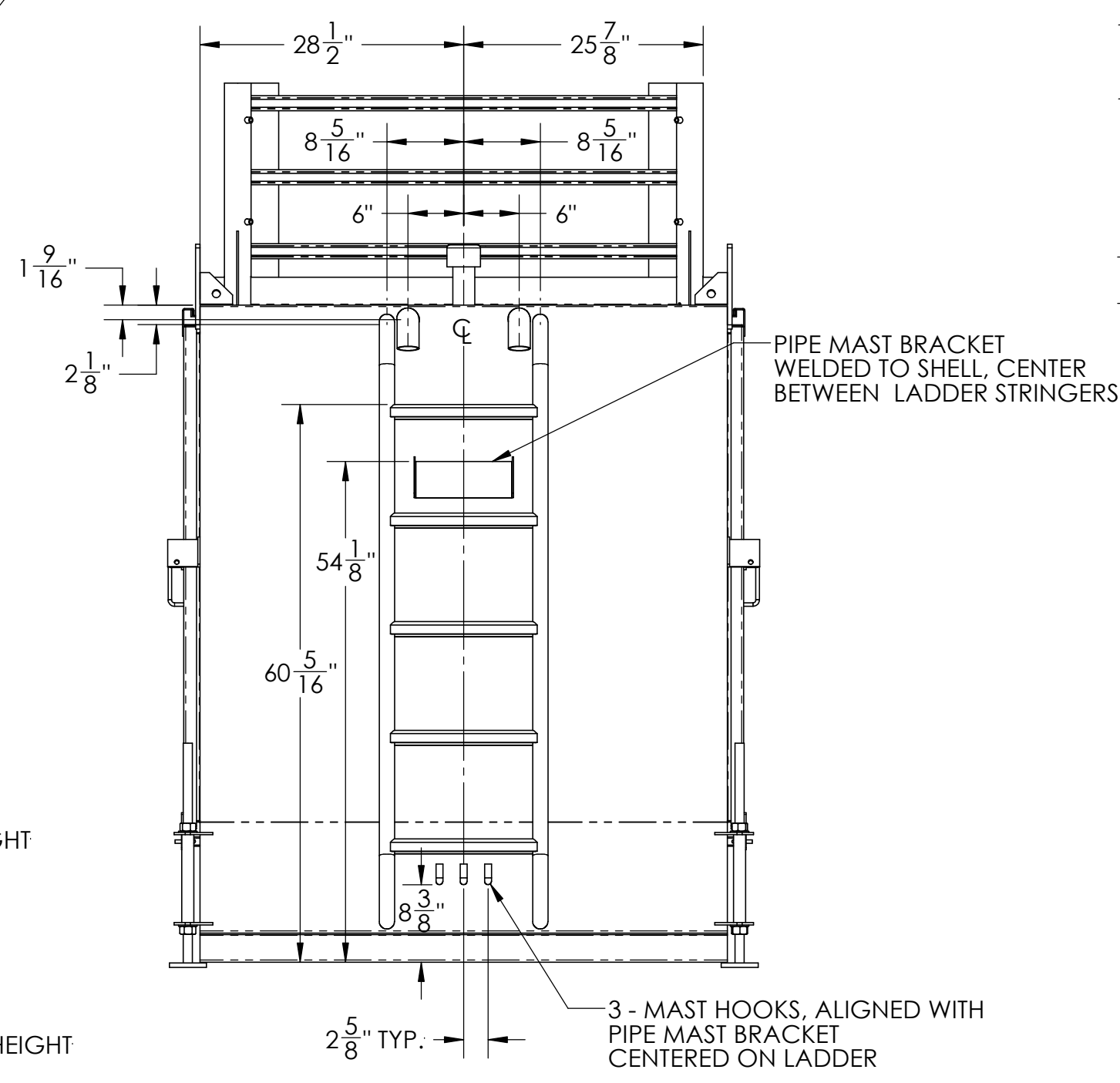
**CABLE ELBOW**  
2 REQUIRED  
MATERIAL: 2"  $\phi$  SCH 40 ALUMINUM STD ELBOW



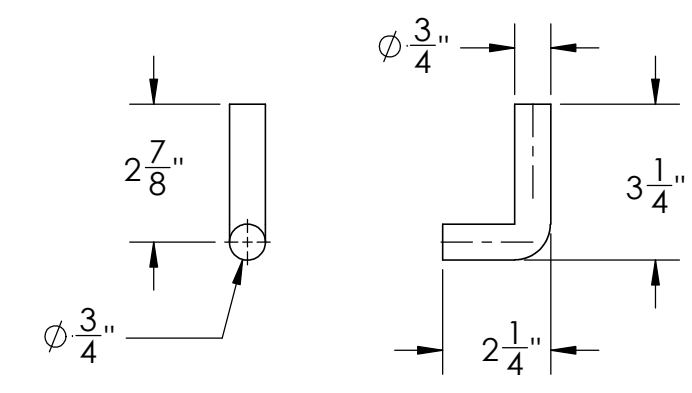
**TOP MOUNTING ASSEMBLY**  
1 REQUIRED



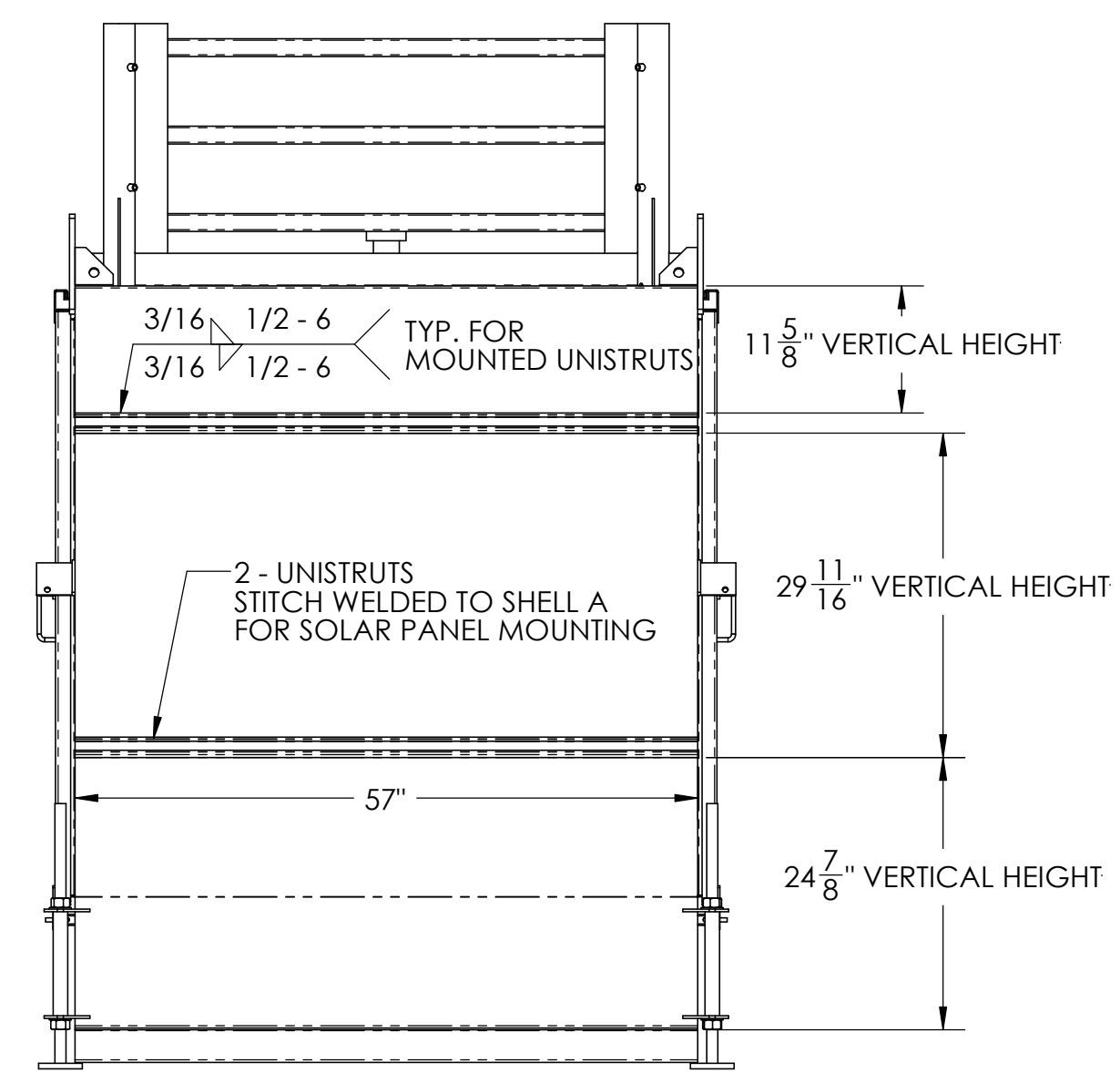
**ANTENNA PIPE SUPPORT**  
2 REQUIRED  
MATERIAL: 2 1/2"  $\phi$  SCH 40 ALUMINUM PIPE



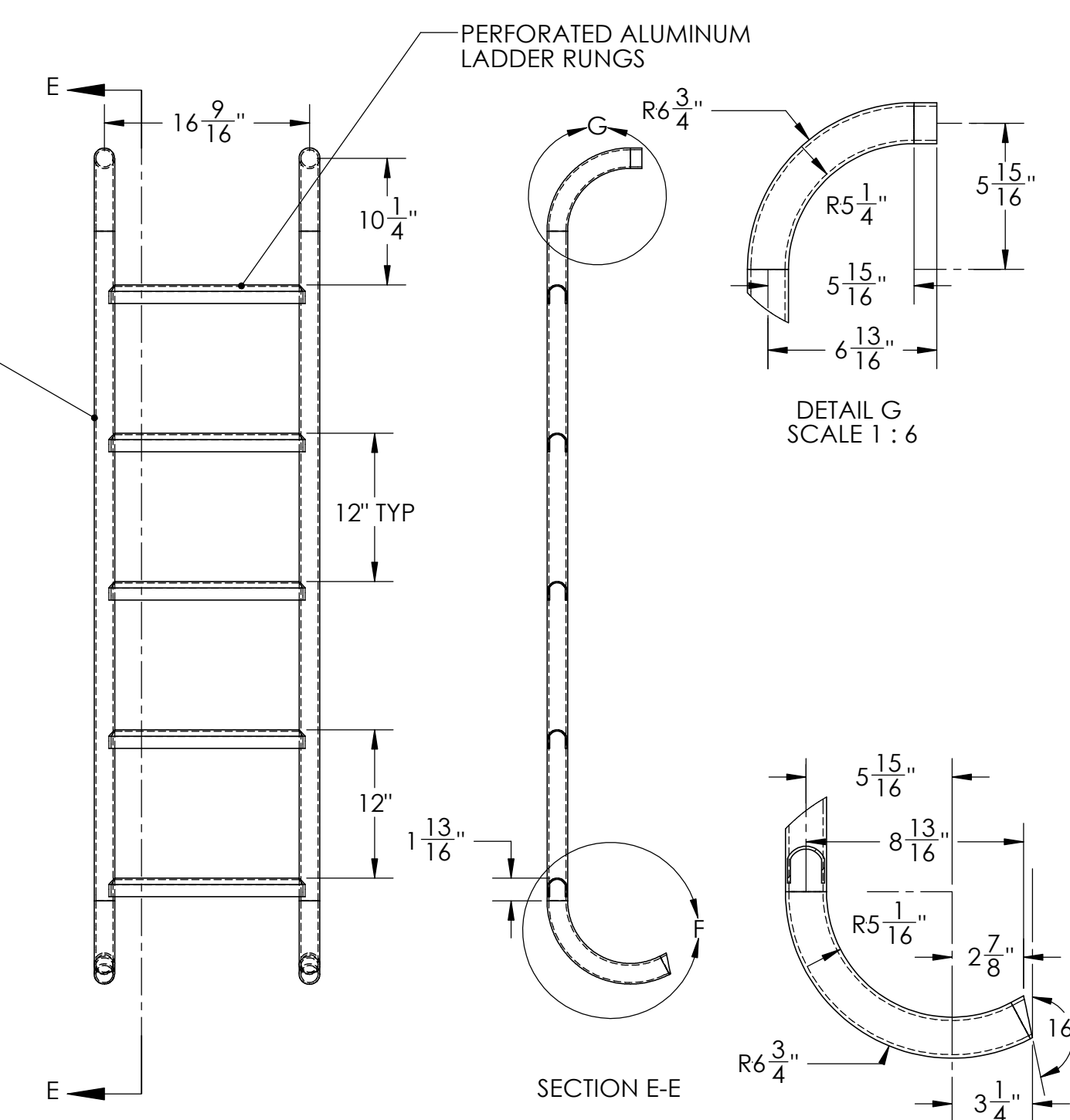
**PIPE MAST BRACKET**  
1 REQUIRED  
MATERIAL: 1/8" ALUMINUM SHEET



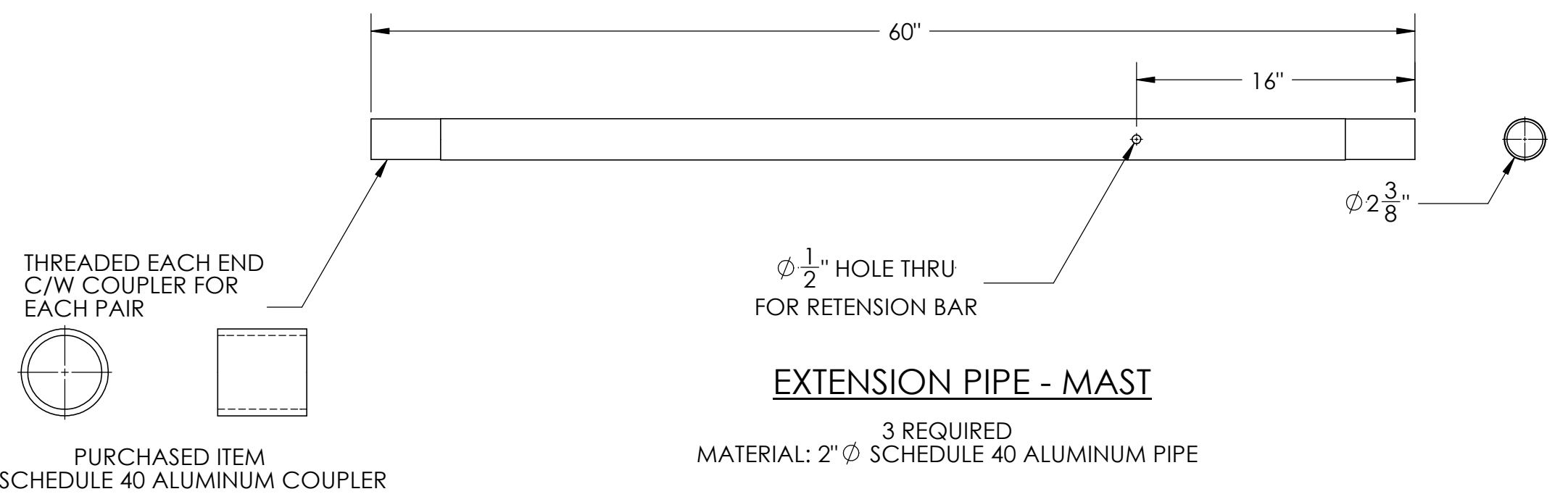
**MAST HOOK**  
3 REQUIRED  
MATERIAL: 3/4" ALUMINUM ROUND BAR



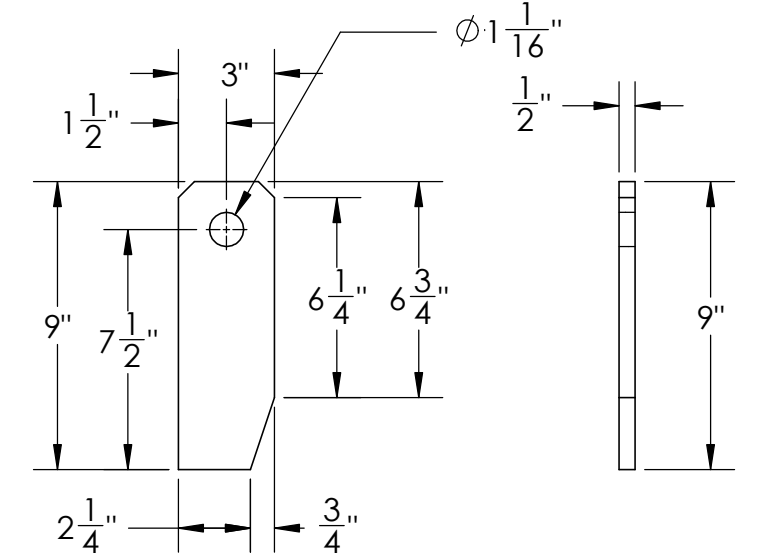
**SOLAR PANEL SIDE**



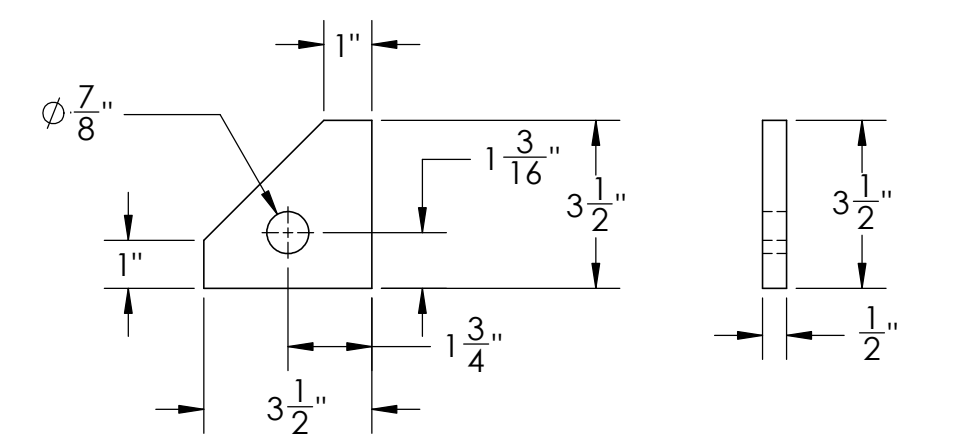
**LADDER**  
1 REQUIRED



**EXTENSION PIPE - MAST**  
3 REQUIRED  
MATERIAL: 2"  $\phi$  SCHEDULE 40 ALUMINUM PIPE



**LIFTING TAB 1**  
4 REQUIRED  
MATERIAL: 1/2" ALUMINUM PLATE



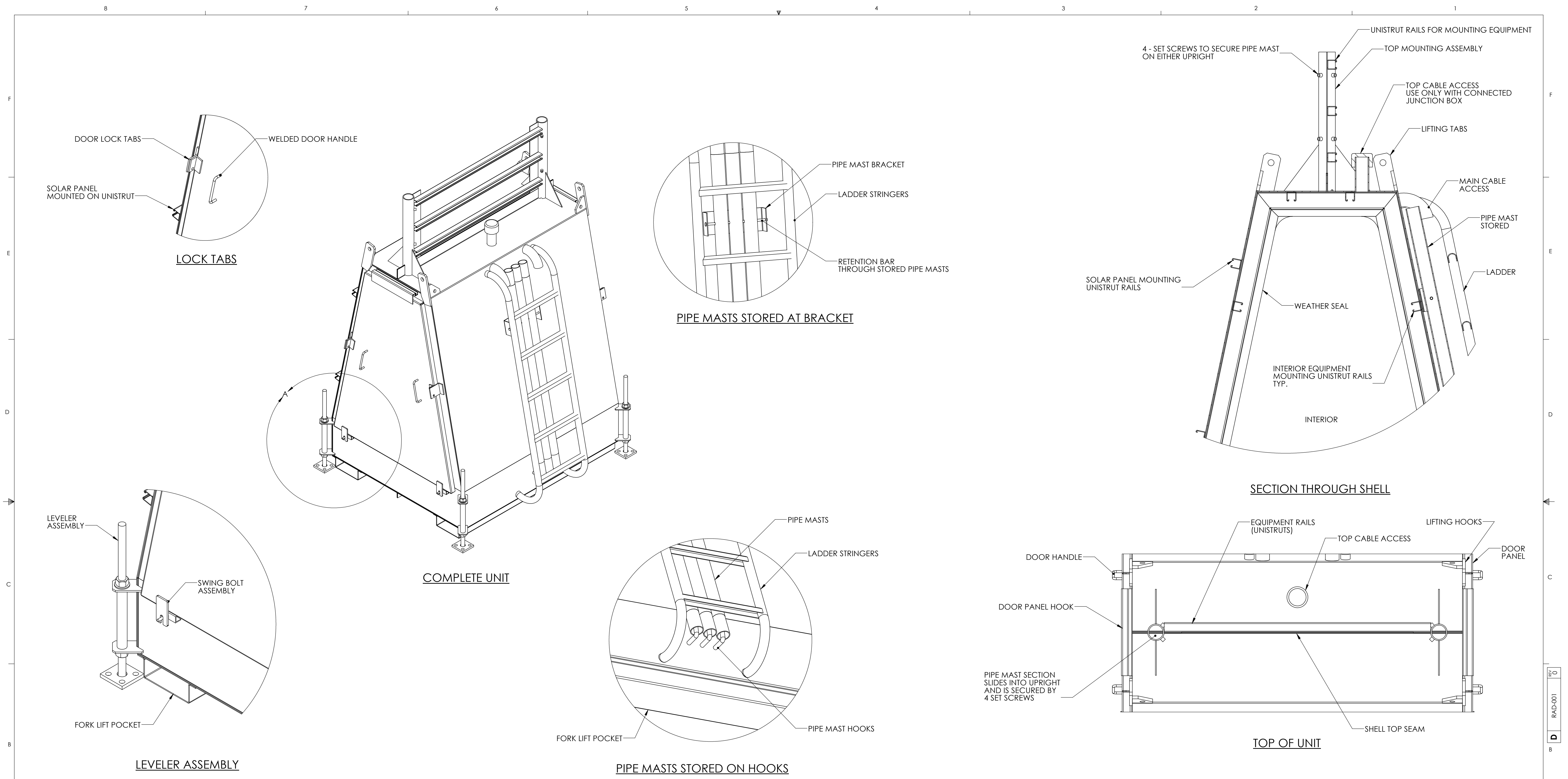
**LIFTING TAB 2**  
4 REQUIRED  
MATERIAL: 1/2" ALUMINUM PLATE

**MATERIALS:**  
SHEET ALUMINUM = ALUMINUM TYPE 5052.  
ALL FLAT BAR, ANGLE AND PIPE SHALL BE EXTRUDED = ALUMINUM TYPE 6061-T6  
UNISTRUT CHANNELS = 1 5/8 INCH TYPE (6063 T5/T6)

UNLESS OTHERWISE SPECIFIED:		NAME	DATE	RCMP E-DIVISION
DIMENSIONS ARE IN INCHES		DRAWN	WSL AUG 19	
TOLERANCES:		CHECKED	M.KUMAR SEPT 19	DETAILS
FRACTIONALS		ENG APPR.		
ANGULAR: MACH ± BEND ±		MFG APPR.		SPECIAL PROJECT EVALUATION COMMUNICATION SERVICES
THREE PLACE DECIMAL ±				
INTERPRET GEOMETRIC TOLERANCING PER:		G.A. COMMENTS:		
MATERIAL:		PROJECT LEAD (SPECS)		
FINISH: POWDER COAT		SPECIAL PROJECT EVALUATION COMMUNICATION SERVICES		
NEXT ASSY	USED ON	SCALE: 1:12/WEIGHT:		

PROPRIETARY AND CONFIDENTIAL  
THE INFORMATION CONTAINED IN THIS DRAWING IS THE SOLE PROPERTY OF RCMP TECHNOLOGY PROGRAM. REPRODUCTION OR ANY REPRODUCTION IN PART OR AS A WHOLE WITHOUT THE WRITTEN PERMISSION OF RCMP TECHNOLOGY PROGRAM, RCMP E-DIVISION IS PROHIBITED.

RAD-001  
D  
B



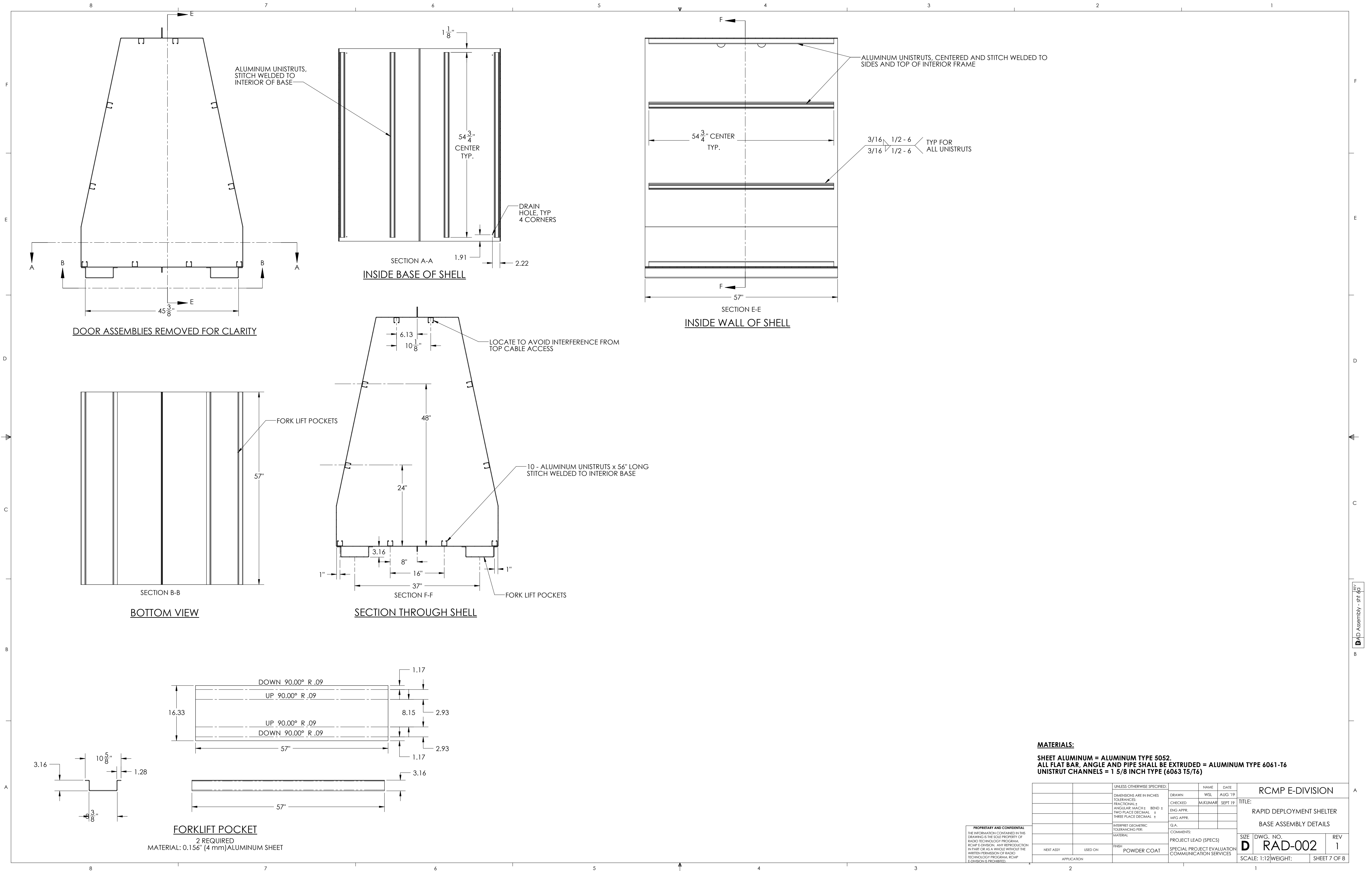
**MATERIALS:**  
**SHEET ALUMINUM = ALUMINUM TYPE 5052.**  
**ALL FLAT BAR, ANGLE AND PIPE SHALL BE EXTRUDED = ALUMINUM TYPE 6061-T6**  
**UNISTRUT CHANNELS = 1 5/8 INCH TYPE (6063 T5/T6)**

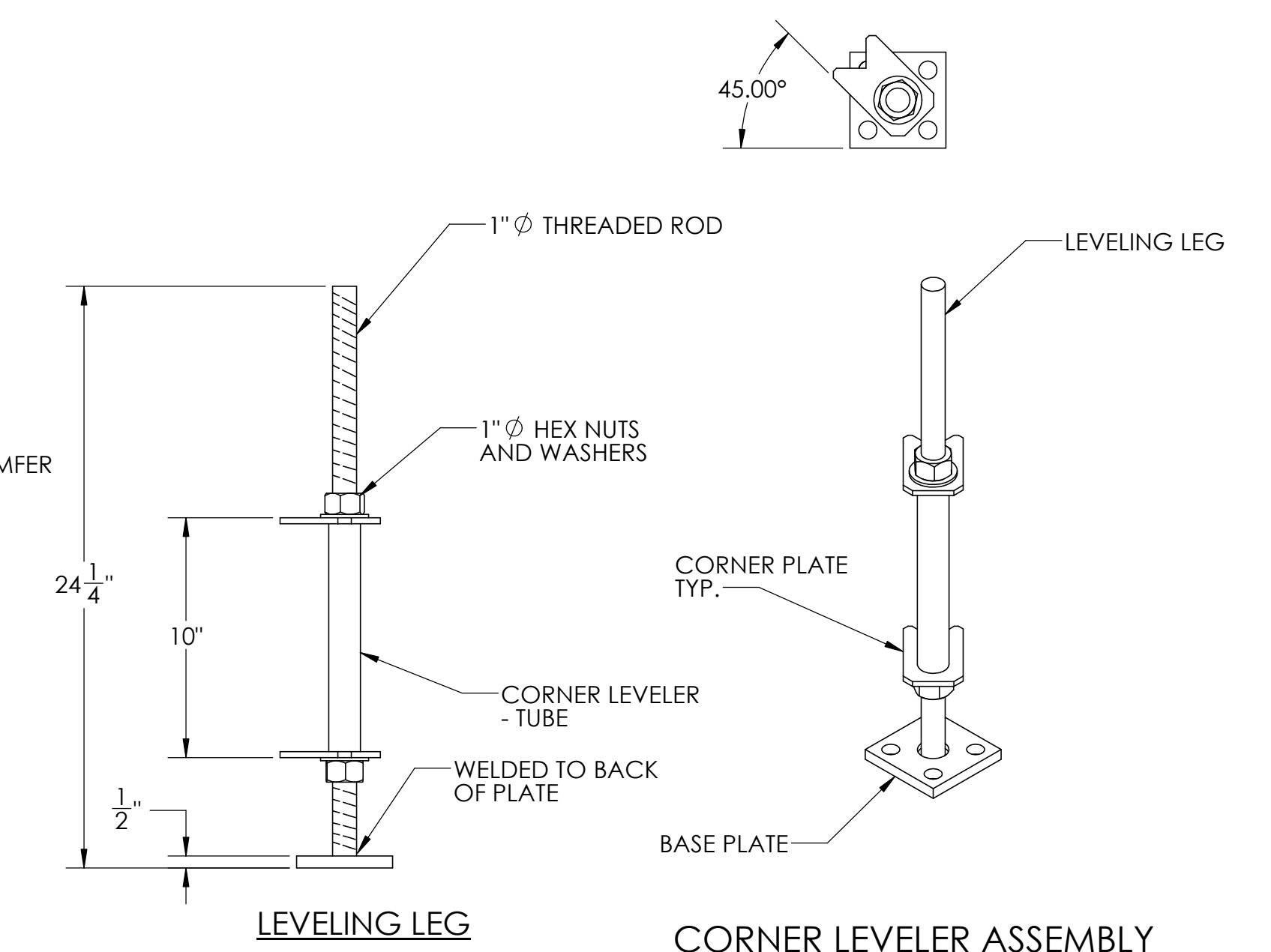
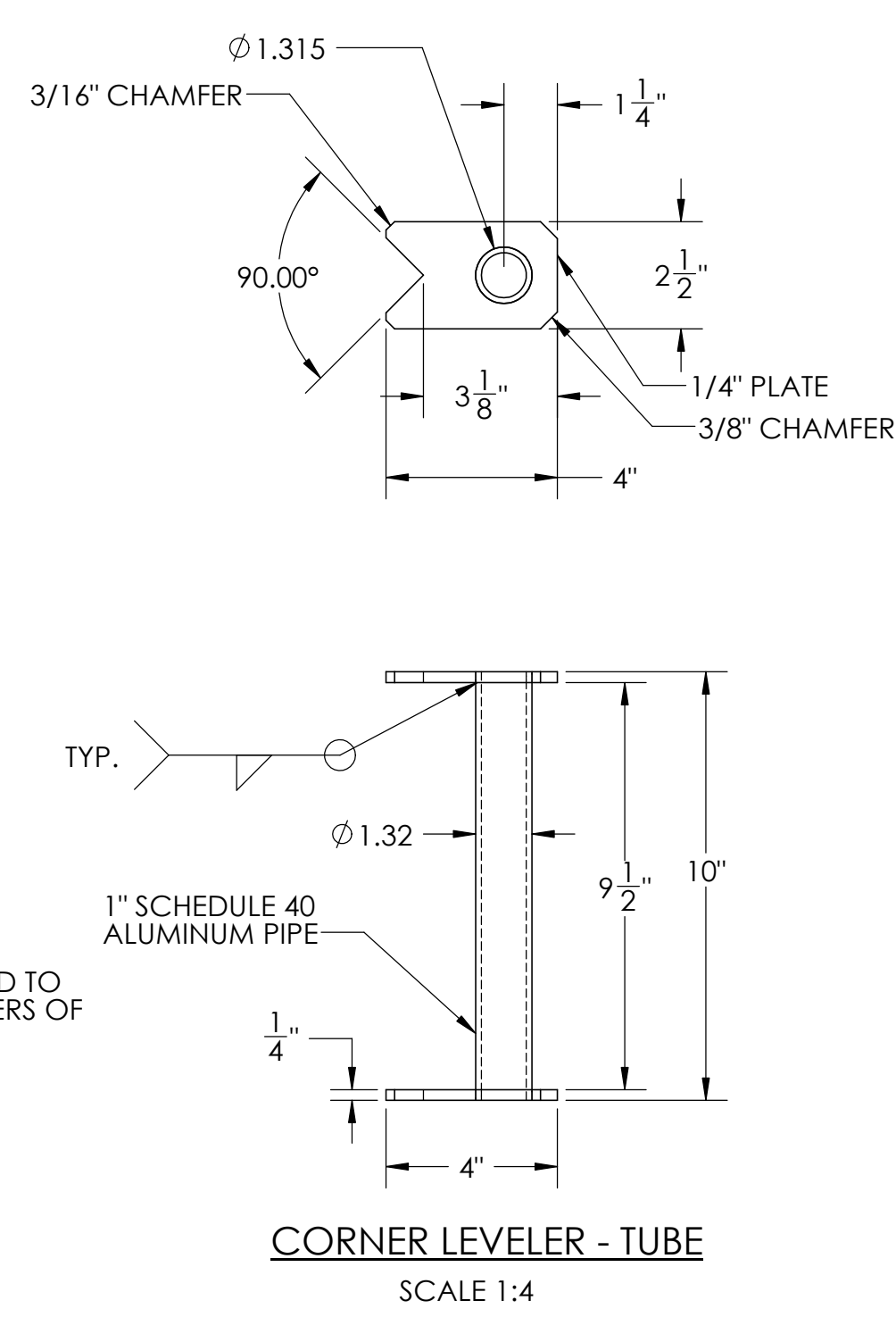
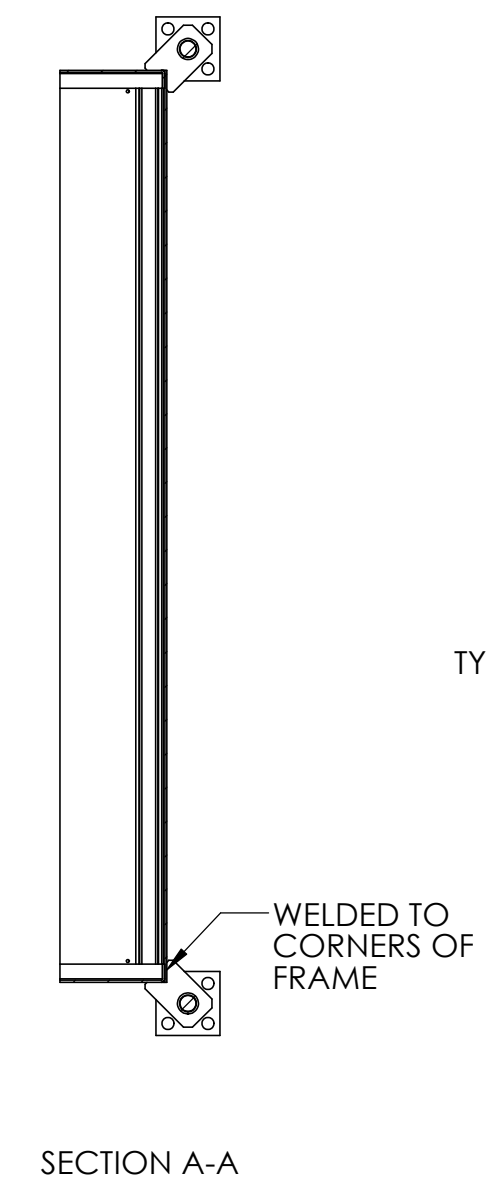
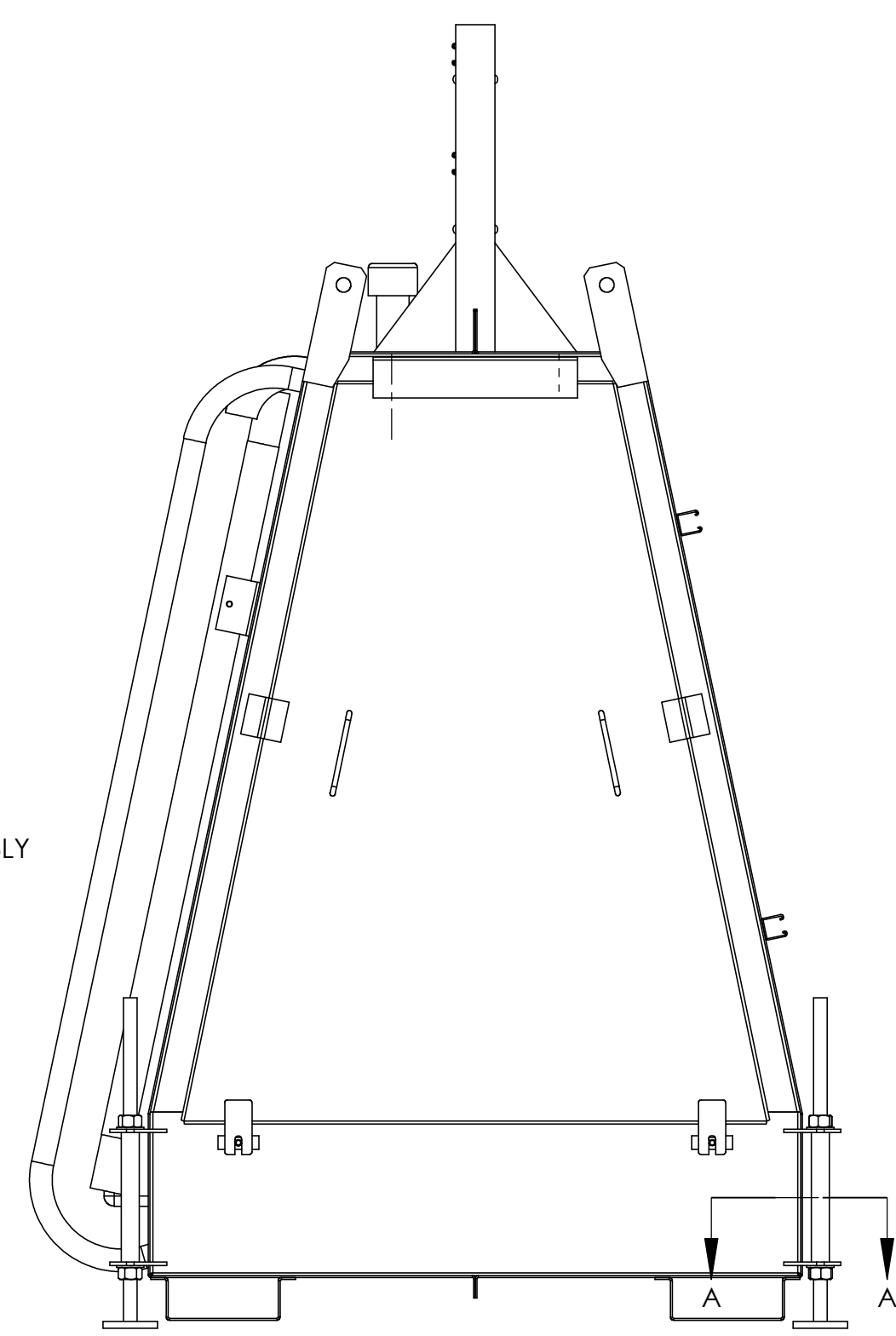
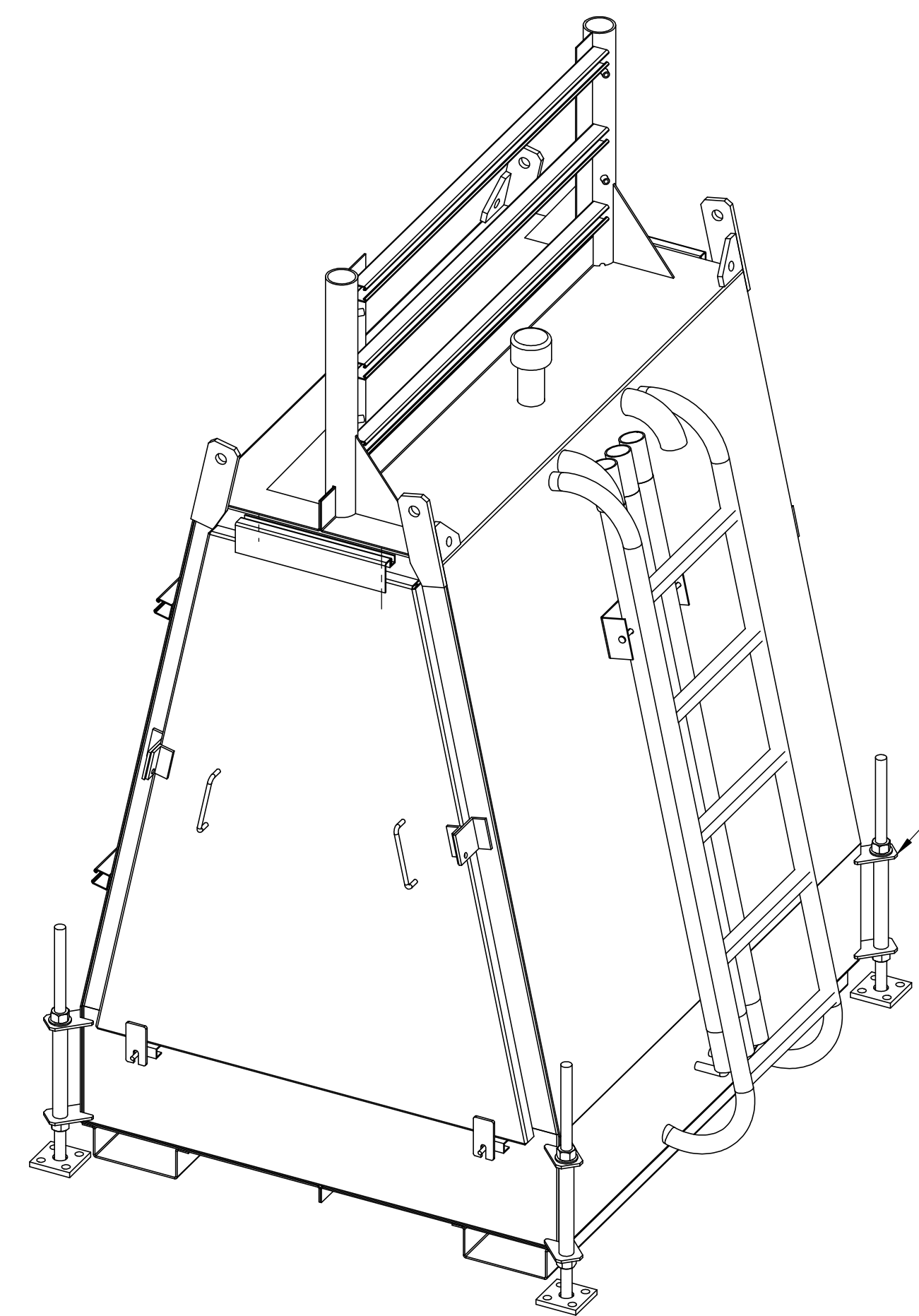
UNLESS OTHERWISE SPECIFIED:	NAME	DATE	RCMP E-DIVISION
DIMENSIONS ARE IN INCHES	WSL	AUG 19	TITLE:
FRACTIONALS	CHECKED	KAKUMAR	SEPT 19
DECIMALS	ENG APPR.		
ANGULARS	MFG APPR.		
TWO PLACE DECIMAL			
THREE PLACE DECIMAL			
INTERPRET GEOMETRIC DIMENSIONS PER:	COMMENTS:		
MATERIAL	PROJECT LEAD (SPECS)		
	SPECIAL PROJECT EVALUATION		
	COMMUNICATION SERVICES		
NEXT ASSY	USED ON	FINISH	POWDER COAT
APPLICATION			

SCALE: 1:12 WEIGHT: SHEET 6 OF 8

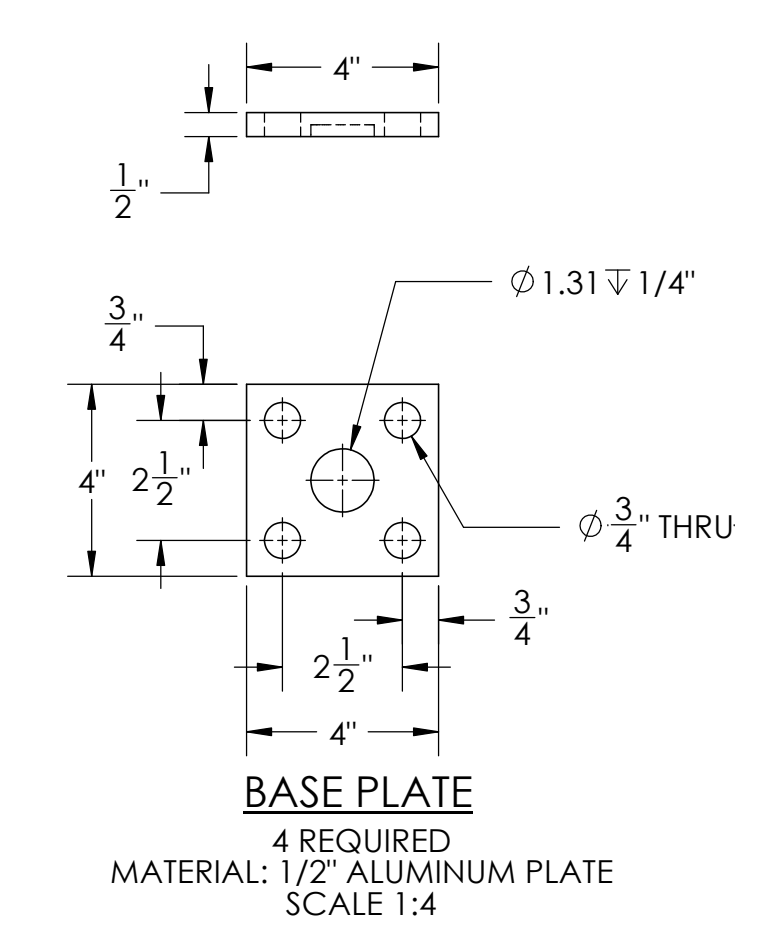
**PROPRIETARY AND CONFIDENTIAL**  
 THE INFORMATION CONTAINED IN THIS DRAWING IS THE SOLE PROPERTY OF RADIO TECHNOLOGY PROGRAM, RCMP E-DIVISION. ANY REPRODUCTION IN PART OR AS A WHOLE WITHOUT THE WRITTEN PERMISSION OF RADIO TECHNOLOGY PROGRAM, RCMP E-DIVISION IS PROHIBITED.

10  
 RAD-001  
 D  
 B





CORNER LEVELER ASSEMBLY  
4 REQUIRED  
SCALE 1:6



**MATERIALS:**  
SHEET ALUMINUM = ALUMINUM TYPE 5052.  
ALL FLAT BAR, ANGLE AND PIPE SHALL BE EXTRUDED = ALUMINUM TYPE 6061-T6  
UNISTRUT CHANNELS = 1 5/8 INCH TYPE (6063 T5/T6)

UNLESS OTHERWISE SPECIFIED:		NAME	DATE	RCMP E-DIVISION
DIMENSIONS ARE IN INCHES		WSL	AUG 19	
TOLERANCES:		CHECKED	MUKUMAR	TITLE: RAPID DEPLOYMENT SHELTER CORNER LEVELER ASSEMBLY
FRACTIONAL ±		ENG APPR.		
ANGULAR: MATCH ± BEND ±		MFG APPR.		SIZE DWG. NO. REV <b>D</b> RAD-002 1
TWO PLACE DECIMAL ±		Q.A.		
THREE PLACE DECIMAL ±		COMMENTS:		SCALE: 1:12/WEIGHT: SHEET 8 OF 8
INTERPRET GEOMETRIC TOLERANCING PER: MATERIAL		PROJECT LEAD (SPECS)		
NEXT ASSY	USED ON:	FINISH	POWDER COAT	SPECIAL PROJECT EVALUATION COMMUNICATION SERVICES

PROPRIETARY AND CONFIDENTIAL  
THE INFORMATION CONTAINED IN THIS DRAWING IS THE SOLE PROPERTY OF RADIO TECHNOLOGY PROGRAM, RCMP E-DIVISION. ANY REPRODUCTION, IN PART OR AS A WHOLE WITHOUT THE WRITTEN PERMISSION OF RADIO TECHNOLOGY PROGRAM, RCMP E-DIVISION IS PROHIBITED.

RAD Assembly - sht 4b